

**LEGEND**

1	Olefins Plant
2	Polyethylene Plant
3	PE Warehouse
4	PP Warehouse
5	Polypropylene Plant
6	Power Plant
7	Existing Cooling Tower
8	Water Treatment Plant
9	Compressor House and ASU
10	Effluent Treatment Plant
11	NGL Storage
12	PRF Storage
13	VC5 Storage
14	Propylene Storage
15	Butene-1 Storage
16	Ethylene Storage
17	NGL Receipt Facility
18	Holding Pond
19	Ammonia Plant
20	Urea Plant, Polisher Unit, Waste Water Treatment Unit, Air Dryer, Workshop, Fert. Train-2 Polisher, Waste Water Treatment, & Air Dryer Units
21	Fert. Train-1 Cooling Tower
22	Urea Warehouse and Bulk Storage
23	Urea Bagging and Truck Loading
24	Ammonia Storage
25	NG Receipt Facility
26	Fert. Train-1 DM Plant
27	Fert. Train-1 Equalization Pond
28	Feed Conditioning Unit
29	Fert. Train-2 Ammonia Plant
30	Fert. Train-2 Urea Plant
31	Fert. Train-2 Cooling Tower
32	Fert. Train-2 Urea Warehouse, Bulk Storage
33	Fert. Train-2 Urea Truck Loading
34	Fert. Train-2 Ammonia Storage
35	Fert. Train-2 NG Receipt Facility
36	Fert. Train-2 DM Plant
37	Argon Recovery / Purge Gas Recovery Plant
38	New Nitrogen Plant
39	Construction and Laydown Area
40	Residential Facilities

0	09.10.17	ISSUED	OCE	SKD	SMM
REV.	DATE	DESCRIPTION	PPD.	CKD.	APPD.
			REV.	0	

This Drawing is the property of ELEME PETROCHEMICAL COMPANY LTD. IMMEDIATELY RETURN TO THE ISSUING OFFICE IF NOT REQUIRED OR REPRODUCED OR DIRECTLY OR INDIRECTLY FOR ANY PURPOSES OTHER THAN THAT FOR WHICH IT IS SPECIFICALLY PREPARED. THE APPLICABLE STANDARDS AND CODES OF PRACTICE SHALL BE SPECIFICALLY REFERENCED IN THE DRAWING AND TO WHICH STRICT COMPLIANCE SHALL BE MAINTAINED.

LOCATION:	IEPL, Port Harcourt, Nigeria	SCALE:	1:2500
TITLE:	COMPOSITE PLOT PLAN IEPL, NIGERIA	AG DRG. No.:	EM63-7500-0001
		FILE:	EM63-7500-0001_R2
			SHT 1 OF 1

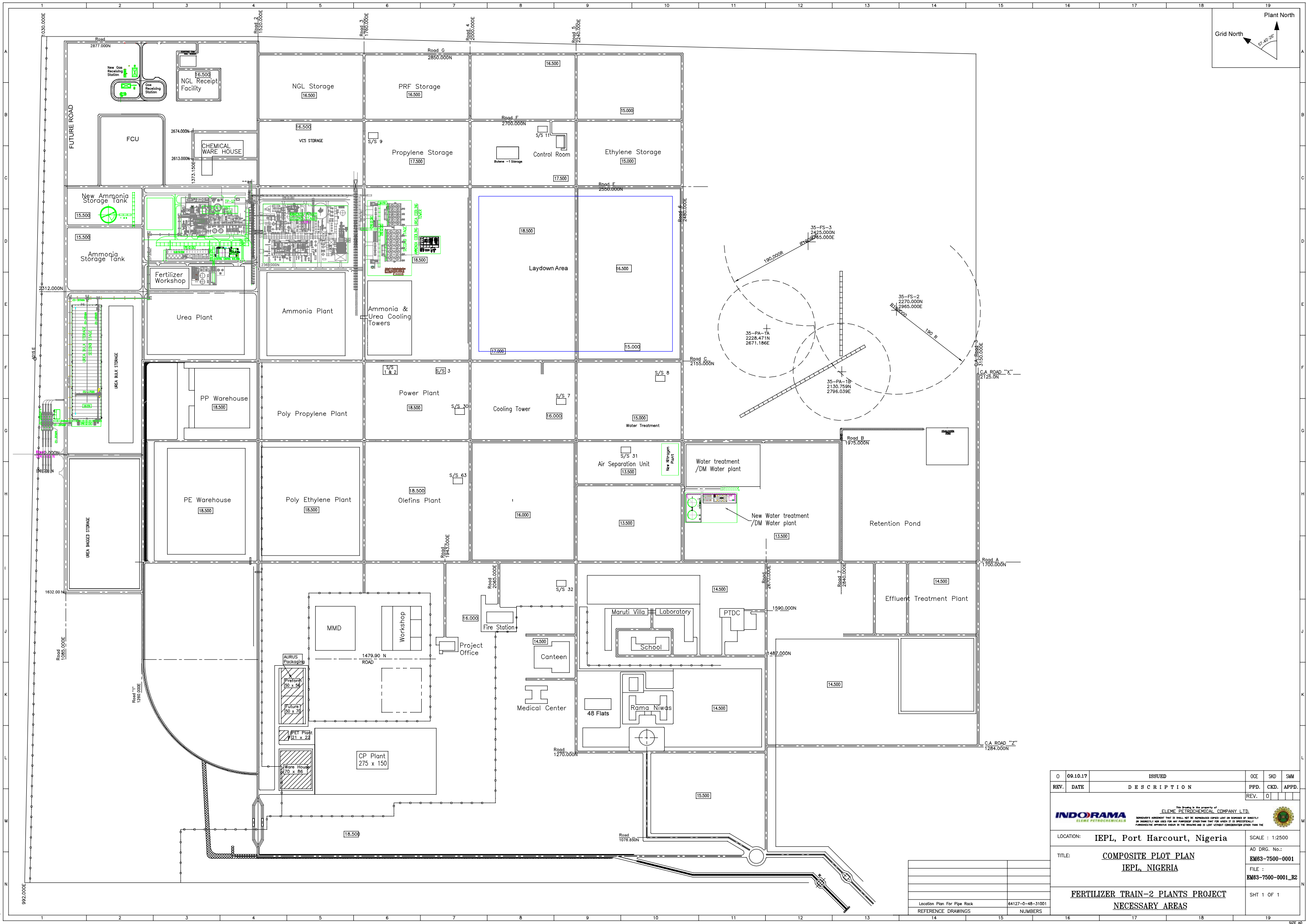
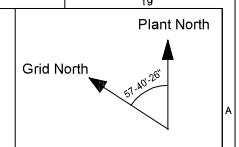
Location Plan For Pipe Rack	64127-0-48-31001
REFERENCE DRAWINGS	NUMBERS

Location Plan For Pipe Rack	64127-0-48-31001
REFERENCE DRAWINGS	NUMBERS

## Legends:

1	Olefins Plant
2	Polyethylene Plant
3	PE Warehouse
4	PP Warehouse
5	Polypropylene Plant
6	Power Plant
7	Existing Cooling Tower
8	Water Treatment Plant
9	Compressor House and ASU
10	Effluent Treatment Plant
11	NGL Storage
12	PRF Storage
13	VC5 Storage
14	Propylene Storage
15	Butene-1 Plant
16	Ethylene Storage
17	NGL Receipt Facility
18	Holding Pond
19	Ammonia Plant
20	Urea Plant, Polisher Unit, Waste Water Treatment Unit, Air Dryer, Workshop, Fert. Train-2 Polisher, Waste Water Treatment Unit & Air Dryer Units
21	Fert. Train-1 Cooling Towers
22	Urea Warehouse and Bulk Storage
23	Urea Bagging and Truck Loading

24	Ammonia Storage
25	NG Receipt Facility
26	Fert. Train-1 DM Plant
27	Fert. Train-1 Equalization Pond
28	Feed Conditioning Unit
29	Fert. Train-2 Ammonia Plant
30	Fert. Train-2 Urea Plant
31	Fert. Train-2 Cooling Tower
32	Fert. Train-2 Urea Warehouse, Bulk Storage
33	Fert. Train-2 Urea Truck Loading
34	Fert. Train-2 Ammonia Storage
35	Fert. Train-2 NG Receipt Facility
36	Fert. Train-2 DM Plant
37	Argon Recovery / Purge Gas Recovery Plant
38	New Nitrogen Plant
39	Construction and Layout Area
40	Residential Area



REV.	DATE	DESCRIPTION	ISSUED	PPD.	CKD.	APPD.
0	09.10.17		ISSUED			

			This Drawing is the property of <b>ELEME PETROCHEMICAL COMPANY LTD.</b>		
<small>IMPOUNDING AGREEMENT THAT IT SHALL NOT BE REPRODUCED COPIED LENT OR OTHERWISE IN ANY MANNER WITHOUT THE WRITTEN PERMISSION OF INDORAMA PETROCHEMICALS. ANY REPRODUCTION OR USE OF THIS DRAWING WITHOUT THE WRITTEN PERMISSION OF INDORAMA PETROCHEMICALS IS STRICTLY PROHIBITED AND IS AT THE USER'S SOLE RISK AND WITHOUT LIABILITY TO INDORAMA PETROCHEMICALS.</small>					
LOCATION: <b>IEPL, Port Harcourt, Nigeria</b>			SCALE: 1:2500		
TITLE: <b>COMPOSITE PLOT PLAN IEPL, NIGERIA</b>			AG DRG. No.: <b>EM63-7500-0001</b> FILE: <b>EM63-7500-0001_R2</b>		
<b>FERTILIZER TRAIN-2 PLANTS PROJECT</b>			SHT 1 OF 1		
<b>NECESSARY AREAS</b>					

Location Plan For Pipe Rack	64127-0-48-31001
REFERENCE DRAWINGS	NUMBERS

Location Plan For Pipe Rack	64127-0-48-31001
REFERENCE DRAWINGS	NUMBERS



# FEDERAL MINISTRY OF ENVIRONMENT

## Environment House

Independence Way South, Central Business District, Abuja - FCT.

Tel: 09-2911 337 [www.environment.gov.ng](http://www.environment.gov.ng), [ea-environment.org](mailto:ea-environment.org)

## ENVIRONMENTAL ASSESSMENT DEPARTMENT

FMEEnv/EA/EIA/4424/Vol.1/68

18<sup>th</sup> September, 2017

The Chief Technical Officer,  
Indorama Eleme Fertilizer & Chemical Limited,  
Eleme Petrochemical Complex,  
East-West Expressway,  
Eleme.  
Port Harcourt.  
Rivers State.

**RE: ENVIRONMENTAL IMPACT ASSESSMENT (EIA) PERMIT FOR THE PROPOSED NITROGENOUS FERTILIZER TRAIN TWO (2) PROJECT (AMMONIA AND UREA) PLANTS**

Please refer to your letter Ref: IEFCL-TR2/ENV/FMENV/2012/01 dated 21<sup>st</sup> August, 2017 and our letter Ref: FMEEnv/EA/EIA/4424/Vol.1/54 dated 5<sup>th</sup> September, 2017 on the above stated project.

2. Following the conclusion of the site verification exercise, the Ministry has placed the project in Category One (1) requiring mandatory EIA studies and Panel review meeting. Please be informed that the issues considered significant by stakeholder during the scoping workshop must be addressed. Please note that this is a condition for the approval of the Terms of Reference (TOR) submitted to the Ministry.

3. The field data gathering and laboratory analyses of the environmental component of the study which will be One (1) season ground truthing shall include the understated parameters as minimum content of the EIA study; also the sampling points shall be geo-referenced with coordinates in UTM format and tables in spread sheet (excel).

S/N	ENVIRONMENTAL PARAMETERS.	PARAMETER DETAILS	NUMBER OF SAMPLES/ DISTRIBUTION	PARAMETERS TO BE MONITORED.
1	Climate/ Meteorology	Microclimate/Regional Climatic features	In-situ measurement, secondary data	Temperature (pattern), Rainfall (pattern, amount, trend), Relative humidity, Wind direction and speed, visibility, cloud cover and their local effects, climatic variability and extreme events, climatic change projections etc.

2	<b>Ground water</b>	Physico-chemical & Microbial.	2nos + control sample	<p>Depth to water table and thickness, hydraulics, recharge and uses, local aquifer storage capacity, specific yield and fluctuation, Colour, pH, Temperature turbidity, Salinity, hardness, Electrical conductivity, heavy metals (Cu, Pb, Fe, K, Ba etc) DO, BOD, COD, THC, , Phosphate, SO<sub>4</sub>, NO<sub>3</sub>, TSS, Free NH<sub>3</sub>, Nitrate, Nitrogen, Cyanide, Vanadium, Arsenic, Suspended Solids, Chromium, Oil and Grease.</p> <p>Microbiology- faecal coliform, total coliform, total plate, Benthos, Microbiology (THB,HUB,HUF).</p>
3	<b>Soil</b>	Physical	7Nos. + 2controls stations Total 9 Stations	Profile (depth, type) colour, permeability, porosity, bulk density, texture (grain size) & Structure.
		Chemical	7Nos. + 2controls stations Total 9 Stations	Heavy metals (V, Ni, Fe, Pb, Cu, Zn etc),pH, moisture content, sulphate, nitrate, Oil & Grease, NH <sub>3</sub>
		Soil Microbiology	7Nos. + 2controls stations Total 9 Stations	Total heterogenic bacteria (total hydrocarbon, T. fungi, total hydrocarbon bacteria (THB), faecal coliform.
4	<b>Surface Water/Sediments</b>	Physico-chemical & Microbial.	3 Nos. + 2 control Stations Total 5 stations	<p>Colour. PH, temperature, turbidity, Salinity. Hardness. Electrical conductivity etc.</p> <p>heavy metals (Cu, Pb, Fe, K, Ba etc) DO, BOD, COD, THC, , Phosphate, SO<sub>4</sub>, NO<sub>3</sub>, TSS, Free NH<sub>3</sub>, Nitrate, Nitrogen, Cyanide, Vanadium, Arsenic, Suspended Solids, Chromium, Oil and Grease.</p> <p>Microbiology- faecal coliform, total coliform,</p>

				total plate, Benthos, Microbiology (THB,HUB,HUF).
5	<b>Climate change consideration</b>			Methods of reducing greenhouse gases, drainages, design, types of pavements, treatment of surface runoff, landscape mitigation, green zones etc.
6	<b>Land Use</b>	Land cover	-	Land Use types: Recreational, agricultural, forestry, industrial, residential, institutional, commercial. Trends etc
7	<b>Ambient Air Quality</b>		7Nos. + 2controls stations Total 9 Stations	Suspended particulate matter, NO <sub>x</sub> ,SO <sub>x</sub> , CO <sub>2</sub> , CO, VOCs, H <sub>2</sub> S.
8	<b>Noise</b>	Noise level	7Nos. + 2controls stations Total 9 Stations	Noise (Db)
9	<b>Ecology</b>	Vegetation/ animals	4 transects	Flora and fauna, Habitat status, floral composition, density and distribution, vegetation structure, plant pathology
10	<b>Aquatic Biology</b>			Fisheries, histology, invasive plants, benthic organisms
11	<b>Geology/Hydro geology</b>	Local and regional		Stratigraphy, structure, fractures patterns, flow direction, aquifer level, Regional geology, Stratigraphic/Lithologic properties, surface water courses/drainage pattern, water table level & type, ground water potential and quality, ground water vulnerability etc
12	<b>Socio-Economic</b>			Education, historical/archaeological monuments, indigenous groups, vulnerable communities, culture, distribution of livelihood, land use, etc. with structured questionnaire administration.
13	<b>Health Impact Assessment</b>			Health status and prevalent diseases within and around the project area and host community.

14	<b>consultation</b>			Relevant regulators, stakeholders & others
15	<b>Waste Management</b>			
16	<b>Effluent stream</b>			
17	<b>Stack Emission measurement</b>		7 Nos (in-situ) in different positions	
18	<b>Pollutant dispersal modeling</b>	Proposed urea plant area		Using screen and AERMOD model

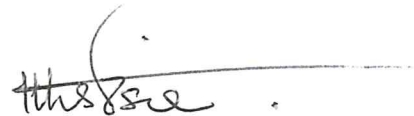
4. You are to facilitate the participation of Ministry officials and also ensure full quality assurance/quality control (QA/QC) measures for the laboratory analysis in line with standard practices. You should notify the Ministry in good time to enable proper plan for participation in the exercise.

5. I am further directed to request you upon completion of the EIA studies, to submit ten (10) hard copies and one (1) electronic copy of the draft EIA report to the Ministry and mail a copy to [eia@ead.gov.ng](mailto:eia@ead.gov.ng).

6. The following should be forwarded to the Federal Ministry of Environment before submission of the **draft** EIA report.

- Evidence of accreditation of the Federal Ministry of Environment for the Laboratory where the sample analysis would be carried out.
- Chain of Custody.
- Certificate of Analysis duly stamped and signed by the Laboratory Manager.
- Evidence of Laboratory witnessing by the Federal Ministry of Environment.

7. Thank you for your co-operation.



**K.A. Ihebinike**  
For: Honourable Minister.





# FEDERAL MINISTRY OF ENVIRONMENT

## Environment House

Independence Way South, Central Business District, Abuja - FCT.

Tel: 09-2911 337 [www.environment.gov.ng](http://www.environment.gov.ng), [ea-environment.org](http://ea-environment.org)

## ENVIRONMENTAL ASSESSMENT DEPARTMENT

FMENV/EA/EIA/4424/Vol.1/73

27<sup>th</sup> September, 2017

The Managing Director,  
Indorama Eleme Fertilizer & Chemical Limited,  
Eleme Petrochemicals Complex,  
East-West Expressway  
Eleme, P.M.B. 5151  
Port Harcourt,  
River State.

**RE: ENVIRONMENTAL IMPACT ASSESSMENT (EIA) PERMIT FOR THE PROPOSED NITROGENOUS FERTILIZER TRAIN TWO (2) PROJECT (AMMONIA AND UREA PLANTS) REQUEST FOR FIELDWORK PARTICIPATION**

I am directed to request you to pay the sum of **One Hundred and Fifty-One Thousand (N151,000:00)** only, being the Transport and Duty Tour Allowance (DTA) of the officer participating in the field data gathering exercise which is scheduled for 28<sup>th</sup> to 30<sup>th</sup> September, 2017.

2. Please kindly provide necessary logistic to ensure a hitch free exercise. You may wish to contact **Ms. M.B. Ajai** on GSM No. **08023228544** to confirm the receipt of this letter for further information on the exercise.
3. Thank you for your usual co-operation.

Ajai, M.B.

For: Honourable Minister