



# Environment and Social Impact Assessment Report (Scheme O, Volume 1)

**Jharkhand Urja Sancharan  
Nigam Limited**

**Final Report**

February 2018

[www.erm.com](http://www.erm.com)

Jharkhand Urja Sancharan Nigam Limited

## Environment and Social Impact Assessment Report (Scheme O, Volume 1)

28 February 2018

Reference # 0402882

**Prepared by : Suvankar Das**

---

Reviewed &      **Debanjan**  
Approved by:   **Bandyapodhyay**  
                         *Partner*

---



This report has been prepared by ERM India Private Limited a member of Environmental Resources Management Group of companies, with all reasonable skill, care and diligence within the terms of the Contract with the client, incorporating our General Terms and Conditions of Business and taking account of the resources devoted to it by agreement with the client.

We disclaim any responsibility to the client and others in respect of any matters outside the scope of the above.

This report is confidential to the client and we accept no responsibility of whatsoever nature to third parties to whom this report, or any part thereof, is made known. Any such party relies on the report at their own risk.

## TABLE OF CONTENTS

<b>EXECUTIVE SUMMARY</b>	<b>I</b>
<b>1 INTRODUCTION</b>	<b>5</b>
1.1 BACKGROUND	5
1.2 PROJECT OVERVIEW	5
1.3 PURPOSE AND SCOPE OF THIS ESIA	6
1.4 STRUCTURE OF THE REPORT	6
1.5 LIMITATION	7
1.6 USES OF THIS REPORT	7
<b>2 POLICY, LEGAL AND ADMINISTRATIVE FRAME WORK</b>	<b>9</b>
2.1 APPLICABLE LAWS AND STANDARDS	9
2.2 WORLD BANK SAFEGUARD POLICY	12
<b>3 PROJECT DESCRIPTION</b>	<b>15</b>
3.1 REGIONAL SETTING	15
3.2 PROJECT LOCATION	15
3.2.1 Location	15
3.2.2 Accessibility	15
3.3 ENVIRONMENTAL SETTING	17
3.3.1 Project Site	17
3.3.2 Site Vicinity	18
3.4 PROJECT COMPONENTS	20
3.5 PROJECT TIMELINE AND PROJECT COST	20
3.6 RESOURCE REQUIREMENT	21
3.7 DISCHARGES AND WASTE	21
<b>4 METHODOLOGY OF ESIA</b>	<b>22</b>
4.1 SCREENING & SCOPING	22
4.2 BASELINE STUDIES	23
4.3 IMPACT ASSESSMENT	23
4.4 ENVIRONMENTAL AND SOCIAL MANAGEMENT PLAN PREPARATION	24
<b>5 DESCRIPTION OF THE ENVIRONMENT</b>	<b>25</b>
5.1 INTRODUCTION	25
5.2 LAND USE/LAND COVER	25
5.3 SOIL	27
5.4 CLIMATE AND METEOROLOGY	27
5.5 NATURAL HAZARDS	27
5.6 AIR ENVIRONMENT	27
5.7 DRAINAGE	28
5.8 GROUND WATER RESOURCES	29
5.9 SURFACE WATER	29

5.10	ECOLOGICAL ENVIRONMENT	29
5.10.1	<i>Vegetation within the Study area</i>	30
5.10.2	<i>Wildlife Habitat and Faunal Diversity</i>	31
5.11	SOCIO ECONOMIC ENVIRONMENT	34
5.11.2	<i>Education profile</i>	36
5.11.3	<i>Skill of the Surveyed Population</i>	39
5.11.4	<i>Drinking Water &amp; Sanitation Facilities</i>	40
5.11.5	<i>Irrigation</i>	40
5.12	HEALTH INFRASTRUCTURE	40
5.13	OTHERS PHYSICAL INFRASTRUCTURE	41
6	IMPACT ASSESSMENT AND MITIGATION MEASURES	42
6.1	POTENTIAL IMPACT	42
6.1.1	<i>Impact on Aesthetic and Visual</i>	45
6.1.2	<i>Air &amp; Noise Quality</i>	45
6.1.3	<i>Impact on Land use, Soil &amp; Drainage</i>	46
6.1.4	<i>Impact on Water Resources</i>	47
6.1.5	<i>Impact on Surface Water Bodies</i>	48
6.1.6	<i>Impact on Biological Environment</i>	48
6.1.7	<i>Impact on Socio-economic Conditions</i>	50
6.1.8	<i>Influx of Labour</i>	50
6.1.9	<i>Impact on Community Health and Safety</i>	51
6.1.10	<i>Occupational, Health and Safety</i>	52
6.1.11	<i>Impact on Cultural Sensitivities</i>	53
7	STAKEHOLDER ENGAGEMENT	54
7.1	INTRODUCTION	54
7.2	IDENTIFICATION OF STAKEHOLDERS	54
7.3	SUMMARY OF STAKEHOLDER CONSULTATIONS	55
8	ENVIRONMENTAL AND SOCIAL MANAGEMENT PLAN	57
8.1	MITIGATION MEASURES & MANAGEMENT PLAN	57
8.2	ENVIRONMENTAL MONITORING & REPORTING	64
8.3	INSTITUTIONAL SETTING AND IMPLEMENTATION ARRANGEMENTS	69
8.4	COMMUNICATION PLAN	69
8.5	GRIEVANCE MECHANISM	70
9	CONCLUSION AND RECOMMENDATION	72

## ***LIST OF TABLE***

Table 1.1	Details of the substation and interlinked project (Scheme O)	6
Table 2.1	Regulation Triggered for the Project	9
Table 2.2	World Bank Policies Triggered for the Project	13
Table 3.1	Salient Features of the Project Location	15
Table 3.2	Project Components in the 132/33 KV Substation at Mahuadanr	20
Table 3.3	Resource Requirement in Construction & Operation of GSS at Mahuadanr	21
Table 3.4	Emission and Discharges from m 132/33 KV Grid Substation	21
Table 5.1	Existing Land Use/ Land Cover Pattern of the Study Area	25
Table 5.2	Location of the villages in the study area with respect to the GSS	34
Table 5.3	Demographic profiles of the village located within study area	35
Table 5.4	Demographic profiles of the Surveyed Population	35
Table 5.5	Occupational pattern of villages in the study area	38
Table 5.6	Health care facilities in study area	40
Table 6.1	Scoping Matrix for Mahuadanr Substation	43
Table 7.1	List of key stakeholders	55
Table 7.2	Stakeholders and Key Points Discussed	56
Table 8.1	Environment and Social Management Plan	58
Table 8.2	Environment and Social Monitoring Plan	65
Table 8.3	Summary of Consultation Framework	69

## ***LIST OF FIGURE***

Figure 3.1	Project Location and Accessibility Map	16
Figure 3.2	Elevation Profile of the Site (Horizontal Cross Section)	17
Figure 3.3	Elevation Profile of the Site (Vertical Cross Section)	17
Figure 3.4	Photographs of Site Surrounding	19
Figure 3.5	Layout of a 132/33 KV substation at Mahuadanr Planned in the JPSIP	20
Figure 4.1	Impact Assessment Process	24
Figure 5.1	Land Use/Land Cover Map of the Study Area	26
Figure 5.2	Drainage Map of the Study Area	28
Figure 5.3	Ecological sensitive areas around Mahuadanr GSS site	32
Figure 5.4	Age Group Distribution of the Surveyed Population	36
Figure 5.5	Literacy profile of the study area villages	37
Figure 5.6	Educational Status of the Surveyed Population	37
Figure 5.7	Employment Status of the Surveyed Population	39
Figure 5.8	Occupational Pattern of the Surveyed Population	39
Figure 7.1	Consultations with Local Communities	55

## *LIST OF ANNEXURE*

Annexure 1:	List of Sub Projects in JPSIP	I
Annexure 2:	General Conditions of Contract	V
Annexure 3:	Special Conditions of Contract	XVI
Annexure 4:	Format for Reporting of ESMP Implementation	XVIII
Annexure 5:	Format for Registering Grievance from Community/ PAP	XXI
Annexure 6:	DGMS Prescribe Permissible Limit of Vibration	XXIV
Annexure 7:	Management Plan for Labour Influx	XXVI
Annexure 8:	Socio Economic Survey Formats	XXXIV
Annexure 9:	Assessment of Impact Significance	XXXVIII

## ***ABBREVIATIONS***

BMTPC - Building Material and Technology Promotion Council of India  
CEA - Central Electricity Authority  
CFC - Chlorofluorocarbon  
CGWB - Central Groundwater Authority Board  
CPCB - Central Pollution Control Board  
dB - Decibel  
DG - Diesel Generator  
DVC - Damodar Valley Corporation  
EA - Environmental Assessment  
EMP - Environmental Management Plan  
ERM - Environmental Resources Management  
ESIA - Environmental and Social Impact Assessment  
ESIA- Environmental and Social Impact Assessment  
ESMF- Environmental and Social Management Framework  
ESZ - Eco-Sensitive Zone  
GCC- General Conditions of Contract  
GM - Gair Mazrui  
GOI - Government of India  
GPS - Global Positioning System  
GSS - Grid Sub Station  
IESE - Initial Environmental and Social Examination  
IMD - India Meteorological Department  
IS - Indian Standard  
IUCN - International Union for Conservation of Nature  
IWPA - Indian Wildlife Protection Act  
JPSIP- Jharkhand Power System Improvement Project  
JUSNL - Jharkhand Urja Sancharan Nigam Limited  
KL- Kilo Litre  
KLD - Kilo Litre per Day  
Km - Kilometer  
KVA - Kilo-Volts-Ampere  
MVA - Mega-Volts-Ampere  
NBWL - National Board of Wildlife  
NH- National Highway  
PCB - Pollution Control Board  
PCB - Polychlorinated Biphenyls  
PfA - Power for All  
PPP - Public Private Partnership  
PTR- Palamau Tiger Reserve  
PUCC - Pollution Under Control Certificate  
SCC- Special Conditions of Contract  
SF6 -Sulfur Hexafluoride  
TCE - TATA Consulting Engineer  
TL - Transmission Line  
WPR- Work Participation Ratio

## EXECUTIVE SUMMARY

The Jharkhand Urja Sancharan Nigam Limited (JUSNL) with financial assistance from the World Bank is implementing the transmission infrastructure development/upgradation under the Jharkhand Power System Improvement Project (JPSIP) and will include: (a) Creation of 25 new 132 kV substations, and (b) Development of associated 132 KV transmission lines of around 1800 kms. These 25 substations and associated transmission lines have been organised into 26 schemes. The proposed new 132 KV Grid substation at Mahuadanr Block is covered under the **Scheme O Volume 1**.

The proposed substation at Mahuadanr Block would be located on Plot no.2 of the Jhangsi Village, Mahuadanr Block in Latehar District. The District Collector Latehar has allotted 10 acres of land to JUSNL for development of the substation. The site is connected through the Mahuadanr- Chainpur village road which links up to State Highway-9.

The project activities would involve the design, construction and operation of a 132/33 KV Sub-station. The key components of the project would include: 2 No.s 50 MVA oil cooled transformers, incoming and outgoing bays connecting to the grid, control room and residential quarters for JSUNL employees. Setting up of the sub-station would involve a permanent change in land use from presently revenue land to infrastructure. Construction activities are expected to cause temporary disturbances because of plying of vehicles in approach roads, site preparation involving cutting and filling of earth and soil, operation of construction machinery and equipment, and the involvement of a labour force.

During operational phase, about 16-20 employees would be located at site. Resource use would comprise of about 9 KLD of water, to be sourced through a bore well at site. On a regular basis, small amounts of domestic waste and waste water would be generated from the site. From time to time, minor amounts of hazardous waste would also be generated and would be disposed off in conformance to regulatory requirements.

The baseline studies have profiled the environmental and social conditions of the site at Mahuadanr Block and the study area of 2 kms around it. The studies were designed to collect information from secondary sources and to obtain primary information through site visits and consultations with local communities and other related stakeholders. Overall, the baseline is reflective of the environmental and social landscape of the area and the Latehar District. Site specific environmental and social baseline is described in the Table below:

Environmental Setting	
Terrain & Slope	The site is located on a slightly undulating land; the general slope of the land is towards North; with a level difference between 3 of 13 m. There are undulations within the site caused by fluvial erosion.
Soil	The soil at site is lateritic in nature. Due to the nature of soil the area is prone to fluvial erosion.



HFL data	The highest and lowest contours of the site are 624m and 611m respectively. There are undulations within the site caused by fluvial erosion.
Existing drainage pattern	There is no drainage channel within the site. Since the site is located on an undulating land and the slope is naturally towards the North and several undulations have formed due to fluvial erosion. Two main drainage channels in the study area are River Birha and Bera.
Environmental pollution in the vicinity	The proposed substation is located in a rural setting. There are no sources of air pollution in the study area. During the site reconnaissance, no industries were not observed in the vicinity of the site.
Other environmental sensitivity	River Bera flows from west to east at 15-10m along the northern side of the site boundary. River Birha flows from south-east and south-western side of the site. Betla National Park, Palamau Wildlife Sanctuary and Mahuadanr Wolf Sanctuary lies within 10km. This site lies within the Eco sensitive Zone of Palamau Tiger Reserve
<b>Social Setting</b>	
Status of Land	A total area of 10 .0 acres of land have been transferred by the District Commissioner of Latehar to JUSNL for setting up 132/33 KVA grid substation.
Habitations	The major habitation is Sugi Village approximately 650m away from the site. The hamlets of Jhangsi village lie within 200m.
Religious & Culture related sensitivity (including sacred groves)	There is a graveyard used by the Christian Community of the Chainpur village in the South-Western corner beyond the premises of the site. There are no sacred groves or any features which are of religious or cultural significance either within the site or in its immediate vicinity.

The potential and associated impacts of the proposed project were identified and evaluated using standard procedures. Source references including past project experience, professional judgment and knowledge of both the project activities as well as environmental and social setting of the site and surroundings were used in the assessment.

The change in land use from fallow culturable wasteland to infrastructure type may be considered to be having insignificant impact because the small extent of such change within the study area, which has the presence of considerable percentage of agricultural and forest land uses, would be minimal. Excavations, cutting and filling of soil and rocky outcrops present on site may lead to erosion and runoffs which may adversely impact adjoining land parcels and / or waterbodies. In addition, local drainage in and around the site may get impacted due to the change of the site topography, if proper site design is not undertaken considering these factors.

With the construction phase lasting about 1 year, construction related activities are expected to cause local level impacts (adjoining settlements in Sugi village and various small hamlets of Jhangsi Village) on environmental quality due to re-entrainment of dust in air from earth works and construction dumps, air and noise emissions from vehicles and construction equipment, discharge of domestic waste water from labour camps and generation of construction and domestic wastes. In the construction phase, there are expected to be health and safety related issues due to involvement of labour in project construction activities. Influx of people (migrant workers, subcontractors and suppliers) may lead pressure on existing social

infrastructure and their interactions with nearby rural communities or potentially lead to cultural conflicts, and result in additional vulnerability to women and population belonging to scheduled castes or tribes. At the same time, positive socioeconomic impacts are also expected with scope for business opportunities for local subcontractors, skill acquisition for local workforce and employment opportunities arising from recruitment of local construction labour and staff, improvement of roads and access.

Adverse impacts caused by the project during the operational phase are expected to be minimal, with no plans for any point source emissions or discharges from the GSS to any environmental media. The operation of the facility is expected to result in generation of small amount of wastes, some of which (like oily rags, waste oil, etc.) may be hazardous in nature and are not expected to cause any significant adverse impacts if adequate safeguards and mitigation measures are adopted, as delineated in the ESMP.

In order to ensure that the mitigation measures developed for the significant impacts of the proposed project are implemented and maintained throughout the project duration, an Environmental Management Plan (EMP) has been developed. The EMP outlines management strategies for managing all associated and potential impacts that could affect the environment and living conditions of people in the area. These mitigation measures and plans include:

- Plan for the sub-station site layout and for cutting and filling of earth in a manner that local drainages are not disturbed and the rivers Bera and Birha flowing nearby southwestern part of the site. It should also be ensured that no untreated sewage, waste water or other wastes are dumped into the rivers.
- The site lies within the Eco sensitive Zone of Palamau Tiger Reserve; site specific Wildlife Management Plan to be prepared and permission to be taken from NBWL prior to commencement of construction activities. Adopt appropriate preventive safeguards not to impact wild life and habitats.
- Adopt appropriate engineering and associated mitigation measures and plans to minimize adverse impacts to local communities during construction activities.
- Adopt appropriate EHS safeguards and good practices to be adopted by construction contractors to ensure that occupational health and safety risks of labours are maintained at acceptable levels. The labour force should also undergo compulsory training on work related health and safety measures.
- Ensure local suppliers and contractors are engaged utilizing local employment and procurement policies to be able to benefit neighbouring communities of Sugi village and hamlets of Jhangsi village.

In order to ensure that the ESMP is implemented during construction phase, specific conditions of contract for Site Contractors to be engaged have been laid down which would be made part of the Bidding document. An ESMP monitoring plan would also be implemented to be enable JSUNL to ensure

that the planned mitigation measures are being implemented and adverse impacts are kept to the minimum possible level. In addition, a fit-to-purpose grievance redressal mechanism will be implemented through which communities and affected people can voice their concerns related to the project to JSUNL.

## 1.1

## BACKGROUND

The Government of Jharkhand with active support of the Government of India has planned for implementing 24x7 Power for All (PfA) in Jharkhand. The program is aimed at achieving 24x7 reliable powers for all the households by FY 2019. The PfA roadmap includes interventions in power generation, transmission, distribution, use of renewable energy and energy efficiency proposed to be implemented during FY16 to FY19. Government of Jharkhand through Jharkhand Urja Sancharan Nigam Limited (JUSNL) has planned to develop the transmission infrastructure in the State. This transmission infrastructure development is being funded from different sources e.g. domestic fund, Public Private Partnership (PPP) and multilateral funding. The Jharkhand Urja Sanchar Nigam Limited (the state run power transmission utility company) has approached the World Bank for assistance to fund a part of the transmission infrastructure under the Jharkhand Power System Improvement Project (JPSIP). The project would include creation of 25 new 132 kV substations and associated 132 KV transmission lines of around 1800 Kms.

JUSNL would like to develop the projects in a sustainable manner. Towards this objective, an Environmental and Social Management Framework (ESMF) has been developed to lay out a mechanism for integrating environmental and social concerns into the planning, designing and implementation phase of JPSIP. Based on the higher-level guidance provided in the ESMF, each project component is undergoing a project specific Environmental and Social Impact Assessment (ESIA). Based on the outcome of the assessment, a project specific Environmental and Social Management Plan (ESMP) is laid down for all the sub-projects

## 1.2

## PROJECT OVERVIEW

As part of the JPSIP, JUSNL has planned for development of 25 new substations and associated transmission lines. These substations and transmission lines have further been consolidated into scheme. For the purpose of implementation these are divided into 3 schemes. The subprojects in each of the schemes are presented as *Annexure 1*.

In Phase I there are 9 schemes. Three (3) nos of these schemes are located in Ranchi District while three (3) nos of schemes are located in Dumka District and the final three (3) nos schemes are in East Singhbhum district. Mahuadanr GSS is part of Scheme O of Phase I, which falls within Latehar district.

This Environment and Social Impact Assessment Report deals only with the construction and operation of the new 132/33 kV Substation at Mahuadanr

Block which is part of Scheme O of Phase I. The details of the other interlinked subprojects in the Scheme O are presented in *Table 1.1*.

**Table 1.1**      *Details of the substation and interlinked project (Scheme O)*

Sl. No	Details	Capacity (MVA)	Length (km)
1.	132/33 Kv GSS Mahuadanr (2x50 MVA)	100	
2.	132 kV D/C 3 Ph. Mahuadanr -Latehar Trans line		86.717

Source: JUSNL

### 1.3      **PURPOSE AND SCOPE OF THIS ESIA**

The ESIA process involves the identification of the potential environmental and social issues in the project and attempts to address them through design interventions. The ESIA further carries out impact prediction and evaluation of residual environmental and social issues of a Project. It then goes on to outline the proposed mitigation measures for residual impacts and enhancement measures for positive impacts which the Project will implement. The objectives of this document are to:

- Identify all potentially significant adverse and positive environmental and social issues of the Project. Enumerate the design modification which has been influenced by the ESIA process and define the final alignment of the Grid Substations (GSS);
- Gather baseline data to inform the assessment of impacts on the environment as a result of the Project;
- Suggest appropriate mitigation measures to effectively manage potential adverse impacts;
- Developing an Environmental and Social Management Plan (EMP) to implement suggested mitigation measures to minimize adverse impacts through effective management systems including formulation of monitoring and reporting requirements;

### 1.4      **STRUCTURE OF THE REPORT**

The report has been organized considering the following:

- Chapter 1 above contains a brief background of JPSIP. It also presents a broad context to the ESIA Study;
- Chapter 2 presents the regulations and policies applicable and actions which are required by JUSNL;
- Chapter 3 presents the description of the proposed substation and interaction with the bio-physical and socio-economic environment;
- Chapter 4 provided methodology adopted the ESIA study;
- Chapter 5 outlines the environmental and social setting of the proposed substation which forms the basis for assessment of potential impacts;
- Chapter 6 presents the likely impacts from the proposed substation over the lifecycle of the project along with its severity levels;

- Chapter 7 elaborates on the stakeholder identification process adopted and a brief of the public consultations under taken to capture the local residents / stakeholders perceptions;
- Chapter 8 presents the mechanism of the implementation of the proposed mitigation measures complete with responsibility and resources requirements.
- Chapter 9 presents the Conclusions and Recommendations

## 1.5

### *LIMITATION*

ERM would like to highlight the following limitations with regard to this ESIA document:

- Project planning for proposed transmission line has been undertaken by Tata Consulting Engineers Limited (Hereinafter referred to as “Design Consultant”) based on desktop studies and a Detailed Project Report has been developed based on the same. Detailed field survey of the project components like tower footing and the RoW is currently being undertaken by Design Consultant. The present draft of the ESIA therefore considers the project configuration as has been outlined in Design Consultant’s Report and impacts for the same has been accordingly assessed.
- ERM is in the process of engaging with the District Forest Department to find out the Tiger Reserve boundary (its ESZ) and Mahuadanr Wildlife Sanctuary. In case the site is located within Mahuadanr Wildlife Sanctuary of any other notified/ designated Eco sensitive zone further assessment to determine specific impacts on ecosystem and biodiversity will be conducted.

## 1.6

### *USES OF THIS REPORT*

The Client acknowledges that report provided by ERM in relation to the provision of Services is delivered to the Client solely for the Client’s benefit. ERM, its officers, employees, contractors, and agents shall owe no duties, obligations or liabilities to any persons in connection with any use of or reliance on the Project information provided by JUSNL. We make no warranties, express or implied, including without limitation, warranties as to merchantability or fitness for a particular purpose.

ERM is not engaged in social and environmental, health & safety consulting and reporting for the purposes of advertising, sales promotion, or endorsement of any client's interests, including raising investment capital or recommending investment decisions, or other publicity purposes. The client acknowledges that the report prepared by ERM are for exclusive use of the client and agrees that ERM's reports or correspondence will not be used or reproduced in full or in part for such promotional purposes, and may not be used or relied upon in any prospectus or offering circular. The client also agrees that none of its advertising, sales promotion, or other publicity matter

containing any information obtained from these assessments or reports, either in parts or entirety, will make reference to ERM's trade name. Nothing contained in this report shall be construed as a warranty or affirmation by ERM that the site and property described in the report are suitable collateral for any loan or that acquisition of such property by any lender through foreclosure proceedings or otherwise will not expose the lender to potential environmental or social liability.

The ESMF identifies all the national and state level legislation, rules and guidelines, which would be applicable to the JPSIP projects. It has also identified all the World Bank Policies and guidelines, which are applicable to JPSIP. This section highlights only the relevant environmental and social policies and regulations, World Bank guidelines that are applicable for this sub-project.

## 2.1 APPLICABLE LAWS AND STANDARDS

The applicable regulation in the context of the project are presented in below table.

**Table 2.1 Regulation Triggered for the Project**

Sl. No.	Regulation	Applicability & Action Required	Responsibility
<b>A. Electricity Related Regulation</b>			
1.	Electricity Act 2003 and Indian Telegraph Act 1885	<p>Under the provisions of Section 68(1):- Prior approval of the Govt. of Jharkhand (GoJ) is a mandatory requirement to undertake any new transmission project 11 kV upward in the State which authorizes JUSNL to plan and coordinate activities to commission a new Transmission project.</p> <p>Under Section 164:- GoJ, may by order in writing, authorize JUSNL for the placing of electric line for the transmission of electricity confer upon licensee (i.e. JUSNL) in the business of supplying electricity under this act subject to such conditions and restrictions, if any, as GoJ may think fit to impose and to the provisions of the Indian Telegraph Act, 1885, any of the power which the Telegraph authority possesses.</p> <p>The Electricity Act and Telegraph Act provide guidance on the compensation payable for damages to crops/ trees and structures for setting up of transmission line. As per the provision of the above mentioned Acts, JPSIP would require to pay compensation for any damage or loss due to its projects.</p>	JUSNL, JPSIP
2.	Technical Standards for Construction of Electrical Plants and Electric Lines Regulations, 2010; Measures relating to Safety	Both the Regulations are framed by Central Electricity Authority (CEA) of India under Indian Electricity Act, 2003. These regulations provide technical standard for construction of electrical lines	JPSIP, Contractor



Sl. No.	Regulation	Applicability & Action Required	Responsibility
	and Electric Supply Regulations, 2010	and safety requirements for construction/ installation/ protection/ operation/ maintenance of electric lines and apparatus. JPSIP and its contractors would comply with the requirements of these regulations.	
<b>B. Environment/Social Legislation</b>			
1.	Environment Protection Rules, 1986 and applicable standards	The standards for discharge/ emission from different type of pollution source (e.g., DG sets) and industries have been laid down by CPCB under EP Rule, 1986. JPSIP would ensure that all these standards are complied during the planning, construction and operation of the project.	JPSIP, Contractor
2.	Jharkhand Timber and Other Forest Produce (Transit and Regulation) Rules, 2004 as amended	For felling of trees for the substation location, permission need to be obtained from DFO or authorized ACF. There are few trees in the substation. Thus permissions would be required from the DFO before felling of trees.	JPSIP, Contractor
3.	Wild Life Protection Act, 1972, as amended	Projects involving diversion of land within any notified ecologically sensitive areas viz. National Parks, Wild Life Sanctuaries etc. will require permission of Standing Committee of National Board of Wild Life (NBWL) as per the W.P and associated Court rulings.	JPSIP
4.	Ancient Monuments & Archaeological Sites and Remains Act, 1958; Indian Treasure Trove Act, 1878; Jharkhand Ancient Monuments and Archaeological Sites, Remains and Art Treasures Act, 2016.	Proposed substation site is not located near or inside archaeological site. Thus National and State level Acts on Ancient Monuments and Archaeological Sites will not be triggered for this project. However, treasure, archaeological artefacts can be found during excavation work; for which procedure laid down in Indian Treasure Trove Act, 1878 would be followed.	JPSIP, Contractor
5.	Hazardous and Other Wastes (Management and Transboundary Movement) Rules, 2016	Generation of waste oil and used transformer oil at site would attract the provisions of Hazardous Waste and other waste Rules, 2016. The hazardous wastes have to be disposed through CPCB/SPCB approved recyclers only. JPSIP would obtain authorization for hazardous waste under this Rule. JPSIP would also maintain record of hazardous waste and submit the desired return (Form 4) in prescribed form to JSPCB.	JPSIP
6.	E-Waste (Management) Rules, 2016	JPSIP, being the bulk consumer of electrical and electronic equipment will ensure that e-waste generated is channelized through collection center or dealer of authorized producer or dismantler or recycler or through the designated take back service provider of the producer to authorized dismantler or recycler.	JPSIP

Sl. No.	Regulation	Applicability & Action Required	Responsibility
7.	Battery (Management & Handling) Rules 2001	It is the responsibility of the bulk consumer <sup>(1)</sup> (JPSIP) to ensure that the used batteries are deposited with the dealer, manufacturer, or registered recycler for handling and disposal. A half-yearly return (Form-1) is to be filed as per the rule to JSPCB.	JPSIP
8.	Ozone Depleting Substances (Regulation and Control) Rules, 2000	JPSIP shall follow the provisions of the notification and shall phase out all equipment, which uses these substances. In case of substation no equipment would be procured which contain CFC's.	JPSIP, Design Consultant
9.	Central Ground Water Authority (CGWA) Public Notice dated 4 <sup>th</sup> January 2017	Permission need to be obtained from State Level Ground Water Resources Development Authority and Central Ground Water Authority for installation of bore well and abstraction of ground water resource.	JPSIP
10.	Regulation of Polychlorinated Biphenyls Order, 2016	The use of polychlorinated biphenyls or any equipment containing PCB would be prohibited entirely from 31st December, 2025.  The technical specification would clearly state that the transformer oil should be free of PCBs or else the DPR should provide a road map for ensuring the phasing out of all PCB's by 2025.	JPSIP and Design Consultant
<b>C. Labour related Legislation</b>			
1.	The Child Labour (Prohibition and Regulation) Act, 1986	This Act prohibits engagement of children in certain employments and regulates the conditions of work of children in other certain employments. JPSIP and its contractors would comply with the requirements of these regulations.	JPSIP, Contractor
2.	Contract Labour (Regulation & Abolition) Act 1970	This Act regulates the employment of contract labours in certain establishments and prohibits for its abolition in certain circumstances. JPSIP and its contractors would comply with the requirements of these regulations.	
3.	Minimum Wage Act, 1948	Under this Act, Jharkhand State government has notified minimum wage rate for the workers. JPSIP's contractors would provide minimum wage to its workers as per the minimum wage rate provided in the said notification.	
4.	Bonded Labour System (Abolition) Act, 1976	This Act abolished bonded labour system to prevent the economic and physical exploitation of the weaker sections of the people. JPSIP and its contractors would comply with the requirements of these regulations.	

(1) 'Bulk Consumer' means a consumer such as the Departments of Central Government like Railways, Defense, Telecom, Posts and Telegraph, the Department of State Government, the Undertakings, Boards and other agencies or companies who purchase hundred or more than hundred batteries per annum.

Sl. No.	Regulation	Applicability & Action Required	Responsibility
5.	Grievance Redressal Machinery under Industrial Disputes Amendment Act, 2010	This Act provides mechanism for setting up of grievance redressal committee in industrial establishment. JPSIP and its contractors would comply with the requirements of these regulations.	
6.	Employees' Provident Fund and Miscellaneous Provisions Act, 1952	This Act provides for the institution of provident funds, pension fund and deposit-linked insurance fund for employees in factories and other establishments. JPSIP and its contractors would comply with the requirements of these regulations.	
7.	The Payment of Wages Act, 1936, amended in 2005; Workmen's Compensation Act, 1923	This Act provides for timely disbursement of wages payable to employed persons covered by the Act. JPSIP and its contractors would comply with the requirements of these regulations.	
8.	Maternity Benefit Act, 1961;	This Act regulate the employment of women in certain establishments for certain periods before and after child-birth and to provide for maternity benefit and certain other benefits. JPSIP and its contractors would comply with the requirements of these regulations.	
9.	Employees State Insurance Act, 1948	This Act provides certain benefits to employees in case of sickness, maternity and 'employment injury'. This Act is applicable to employees earning Rs 15,000 or less per month. JPSIP and its contractors would comply with the requirements of these regulations.	
10.	Inter-state Migrant Workmen Act, 1979	This Act regulates the employment of inter-State migrant workmen and provides for their conditions of service. JPSIP and its contractors would comply with the requirements of these regulations.	
11.	Intimation of Accidents (Forms and Time of Service of Notice) Rules, 2004	This Rule comes in force for occurrence of accident in connection with the generation, transmission, supply or use of electricity and electric line. JPSIP would incorporate requirements of these regulations in contract document of procurement.	

## 2.2

### WORLD BANK SAFEGUARD POLICY

The implementation of the World Bank Operational Policies seek to avoid, minimize or mitigate the adverse environmental and social impacts, including protecting the rights of those likely to be affected or marginalized by the proposed project. Based on the information gathered during the study, following Policies are triggered and would require adequate measures to address the safeguard concerns.

**Table 2.2**      **World Bank Policies Triggered for the Project**

Sl. No.	World Bank Policies/Guidelines	Applicability	Responsibility
1.	OP 4.01 Environmental Assessment	The Bank requires environmental assessment (EA) of projects under Bank financing to help ensure that they are environmentally sound and sustainable. EA takes into account the natural environment (air, water, and land); human health and safety; social aspects (involuntary resettlement, indigenous peoples, and physical cultural resources); and transboundary and global environmental aspects. As per requirement of the OP 4.01, environmental assessment is being carried out for this project.	Environmental and Social Consultant of JPSIP
2.	OP 4.11 Physical Cultural Resources	This policy requires Bank financing projects to assess impacts on physical cultural resources at the earliest possible stage of the project planning cycle. Environmental assessment involves the preparation of a physical cultural resources management plan that includes (a) measures to avoid or mitigate any adverse impacts on physical cultural resources; (b) provisions for managing chance finds; (c) any necessary measures for strengthening institutional capacity for the management of physical cultural resources; and (d) a monitoring system to track the progress of these activities. Though presently there are no physical cultural resource found to be affected by the project, possibility of "chance finds" cannot be ruled out. If something is found at later stage of the project (construction phase), procedures laid down in "Indian Treasure Trove Act, 1878". The ESIA Study for the Mahuadanr substation would be carried out to have a better understanding of physical and cultural resources present in the site (if any).	Environmental and Social Consultant of JPSIP
3.	OP 4.36 Forests	This policy contributes to Bank's mission of poverty reduction and sustainable development through management, conservation and sustainable development of forest ecosystems and their associated resources. As the project site is not located on forest land, this Policy would not be triggered.	Environmental and Social Consultant of JPSIP
4.	OP 4.10 Indigenous Peoples	This policy contributes to the Bank's mission of poverty reduction and	Environmental and Social Consultant of

Sl. No.	World Bank Policies/Guidelines	Applicability	Responsibility
		sustainable development by ensuring that the development process fully respects the dignity, human rights, economies, and cultures of Indigenous Peoples. For projects which are likely to have impact on the tribal community a Tribal Development Plan would be developed and implemented.	JPSIP/JPSIP
5.	IFC/WB General EHS Guidelines	Recommendations of these guidelines would be incorporated in ESMP and	Environmental and Social Consultant and
6.	IFC/WB Guidelines for Power Transmission and Distribution	Bidding document for this project.	Design Consultant of JPSIP

### 3 PROJECT DESCRIPTION

#### 3.1 REGIONAL SETTING

The proposed substation is located at Jhangsi Village, of Mahuadanr Block in Latehar District.

#### 3.2 PROJECT LOCATION

##### 3.2.1 Location

The proposed substation is planned to be on Plot No 2, Khata no.74, Thana No. 263 in Jhangsi Mouza, of Latehar District.

As per Letter no. 922 dated 23<sup>rd</sup> September, 2017, a total area of 10 .0 acres (4.05 ha) have been transferred <sup>(1)</sup> by the District Commissioner of Latehar to JUSNL for setting up 132/33 KVA grid substation. The salient features of the project location is presented in *Table 3.1*.

*Table 3.1 Salient Features of the Project Location*

Sl. No	Item	Description
1.	Plot No/s	2
2.	Khata No.	74
3.	Thana No.	263
3.	Area	10 acre/4.04 Hectares
4.	Allotment Letter No	959 dated 07/03/2016 of Revenue Branch, District Collector Office Latehar
5.	Type of Land	Gair Mazrui Am (Jharkhand Sarkar)/Government Fallow Culturable Waste Land
6.	Ownership	Government of Jharkhand
7.	Toposheet Number	F45A3 (New Series)

##### 3.2.2 Accessibility

The site can be accessed from Ranchi through NH-43 and then through State Highway -9 up to Mahuadanr Village. The site is approximately 4.3km (aerial distance) away from Mahuadanr Village. There is a village road that connects Mahuadanr with Chainpur through Sugi and Jhangsi villages. The site lies adjacent to this village road which is a 4m wide metalled road. The stretch of road that winds through Sugi village has trees on its side and has several sharp bends. During the site visit, it was observed that there are potholes on the road that requires repair. It is to be noted, that the DPR for 132/33KV Mahuadanr Substation and associated Lines (Scheme O) does not consider the project site approach road that will be used for transportation of equipment,

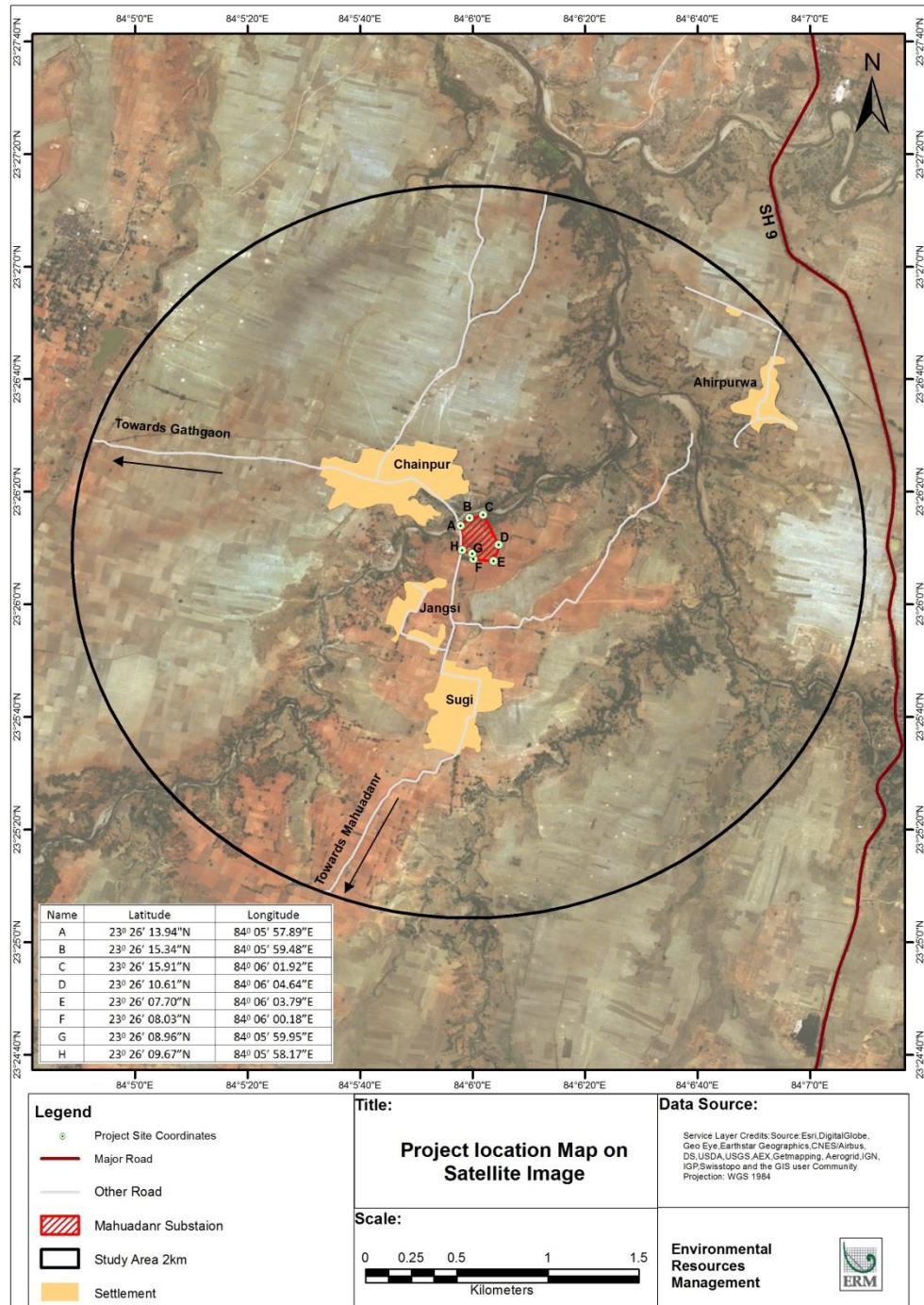
(1) <http://jharbhoomi.nic.in/jhrlrmsmis/MISRegister2/frmRegister2Report.aspx?distcode=14&circlecode=12>



labour and materials, nor has it suggested any upgradation of the existing village road, hence the same is not considered in the ESIA.

The proposed project location and accessibility to the site is shown in Figure 4.1

**Figure 3.1** *Project Location and Accessibility Map*



### 3.3 ENVIRONMENTAL SETTING

#### 3.3.1 Project Site

The proposed substation is located on a fallow land. As per Government records, the land has been categorized as Fallow Culturable Wasteland. The land contains erosional features that have been formed by run-offs due to precipitation. The site is slightly undulating and the general slope of the land is from South to North. The elevation profile of the site in horizontal and vertical cross section is shown in *Figure 3.2* and *Figure 3.3*.

**Figure 3.2** Elevation Profile of the Site (Horizontal Cross Section)



**Figure 3.3** Elevation Profile of the Site (Vertical Cross Section)





The site elevation ranges from 611 m to 624 m and sparse vegetation is present in the site. Bera River flows from West to East along the Northern boundary of the site.

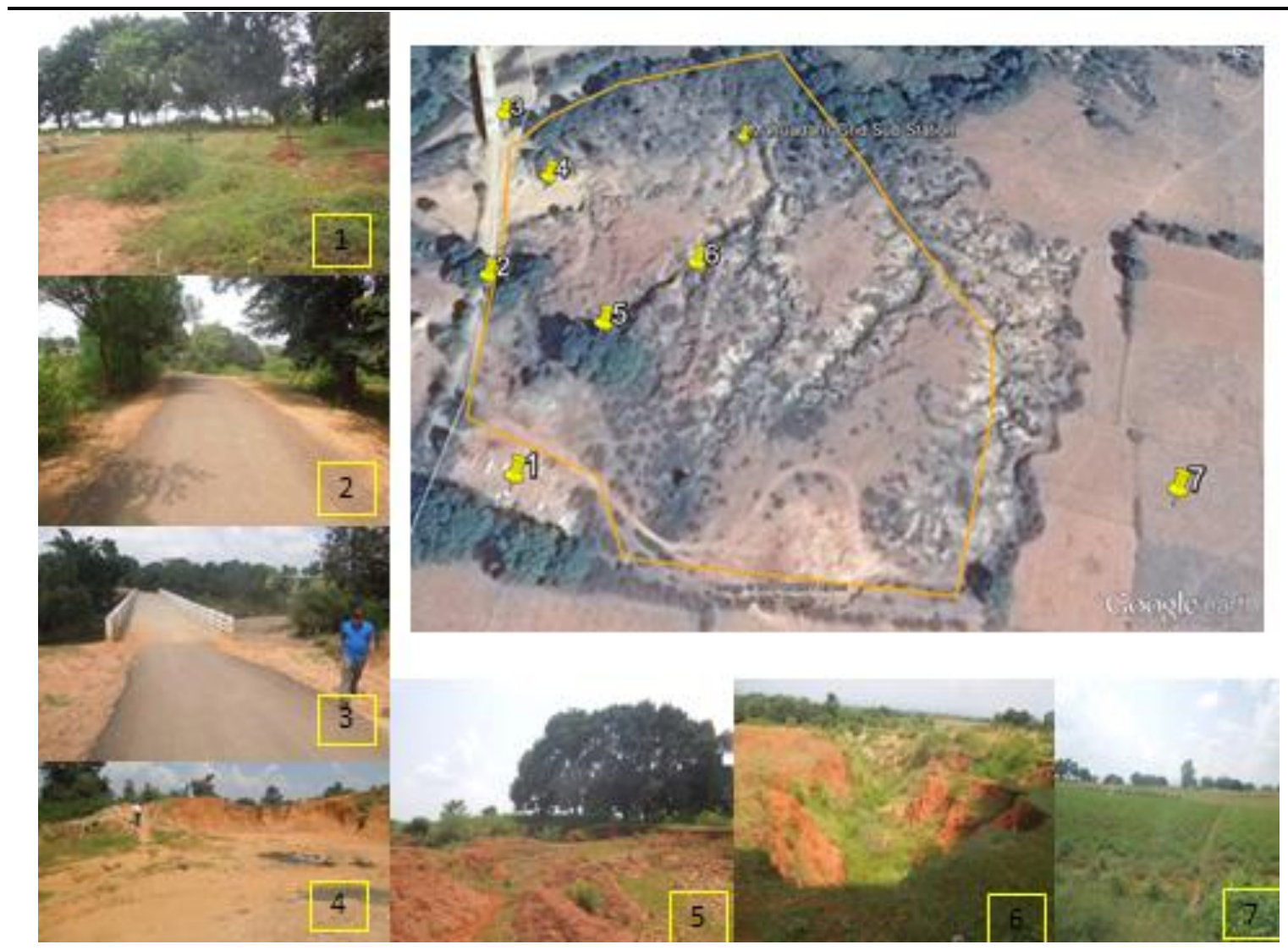
### 3.3.2 *Site Vicinity*

The environmental setting of the area within 2km radius of the proposed site along the four cardinal directions has been described below.

Direction	Features
North	Bera River flows from West to East within 15-20m along the Northern boundary of the proposed site. The Bera river flows Northward and meets Birha River approximately 1 km away from site. Chainpur village lies across Bera River approximately 250m away from site in North-West. The village is surrounded by agricultural lands. Ahirpurwa village lies approximately 1.5km away in the North-East. There are few waterbodies interspersed within the agricultural and barren land.
East	The eastern side of the proposed site comprises of a mix of agricultural land and barren land interspersed with trees. Birha River flows 1km away from the proposed site.
South	At the South-Western corner beyond the proposed site, there is a graveyard used by the Christian communities living in Chainpur village. The approach road to the site from Mahuadanr is from South of the proposed site. Sugi village lies approximately 650m South of the proposed site. Jhangsi village lies approximately 330m away from the proposed site. Birha River flows from South-East to South-West of the site. Bera River flows on the South Western
West	The approach road runs along the Western boundary of the proposed site. Bera river runs along the South- Western to Western part of the site. Agricultural land and fallow land is present.

Photograph of the features surrounding the substation site is presented in *Figure 3.4*.

Figure 3.4 Photographs of Site Surrounding

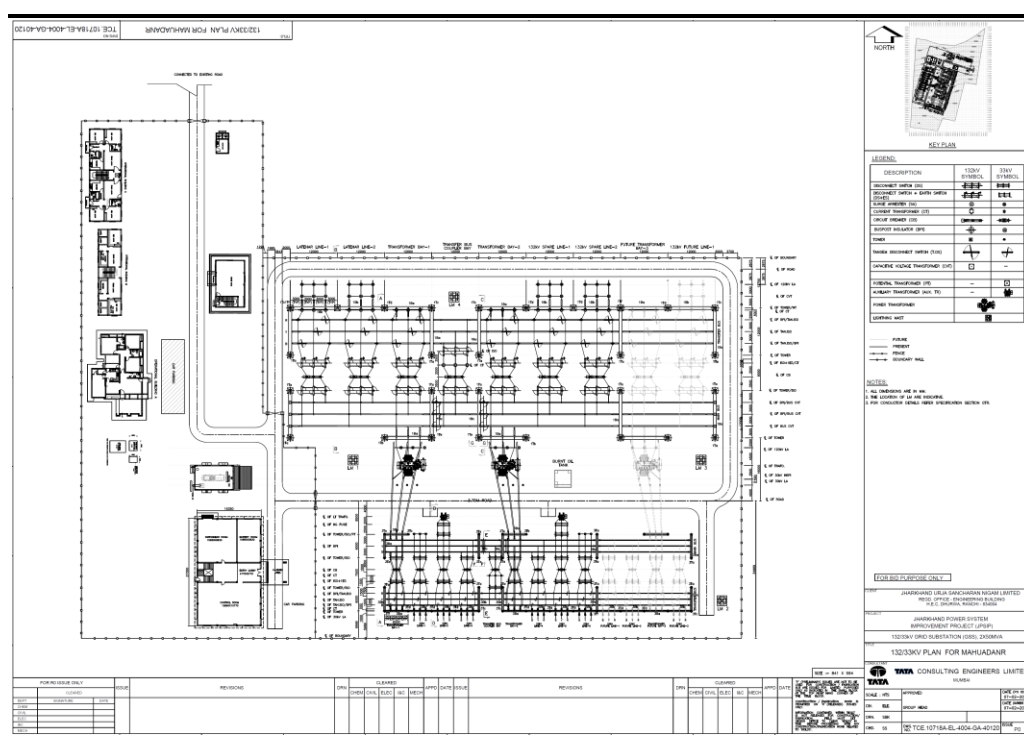


The project components which have been planned in the project are presented in the *Table 3.2* and the typical substation layout is presented in *Figure 3.5*.

**Table 3.2** *Project Components in the 132/33 KV Substation at Mahuadanr*

Sl. No	Component	Description
1.	Transformer	2 nos 50 MVA Oil Cooled Transformer
2a.	Bays (incoming)	9 nos of 132 KV bays (2 nos for future Expansion)
2b.	Bays (outgoing)	15 Nos of 33 KV bays (4 nos for future Expansion)
3	Transformer Oil	Would be as per the Regulation of Polychlorinated Biphenyls Order, 2016
<b>A. Associated Infrastructure</b>		
4	Control Room	One number with control panel
5	Residential Quarters	8 nos of 1 bedroom flats Type-III 8 nos of 2 bedroom flat Type II 1 four room-Type I Accommodation
6	Pump House	1 nos of submersible pump

**Figure 3.5** *Layout of a 132/33 KV substation at Mahuadanr Planned in the JPSIP*



Source: Detailed Project Report

The estimated cost for construction of the 132/33 kV Mahuadanr substation would be around INR 52.22 crores. This includes the cost of civil works, cost of procurement of electrical equipment and associated materials, installation and commissioning. It is estimated that the construction would be completed within a maximum period of 18 months. However, it is expected that site

preparation, construction and civil works of the substation would be completed in and about 12 months.

### 3.6 *RESOURCE REQUIREMENT*

The resources required during the construction are presented below

**Table 3.3** *Resource Requirement in Construction & Operation of GSS at Mahuadanr*

Sl. No	Description	Resource Requirement
1.	Land (Total)	10 acres
2a.	Manpower (Construction Phase)	The peak manpower requirement is expected to be 50 persons
2b.	Manpower (Operation Phase)	The Peak manpower is expected to be 16-20 persons
31.	Water (Construction Phase)	10-13 KLD (peak water requirement)
3b.	Water (Operation Phase)	8.4 KLD (for domestic purpose)
4.	Construction Material	Steel, cement, aggregate and sand

### 3.7 *DISCHARGES AND WASTE*

Emission and discharges from the proposed substation during construction and operation phases are presented in *Table 3.4*.

**Table 3.4** *Emission and Discharges from m 132/33 KV Grid Substation*

Sl. No	Description	Quantity
1a.	Waste Water (Construction)	Peak generation of 2.5 KLD
1b.	Waste Water (Operation)	6.7 KLD
2a.	Solid Waste (Construction)	The municipal solid waste would be around 7.5 -12 kg per day. In addition, construction waste would be generated.
2b.	Solid Waste (Operation)	The municipal solid waste generated during the operational stage would be around 21 kg/day
3.	Used transformer oil	The used transformer oil would be produced at an interval of 15 years.
4.	e-waste	The e-waste generated from the panels at the end of the life

A project level Environmental and Social Impact Assessment (ESIA) is a method of systematic identification and evaluation of the potential impacts (effects) of a proposed substation relative to the physical, biological and socioeconomic components of the environment. The ESIA study can be considered as an important project management tool that can assist in collecting and analyzing information on the environmental effects of a project and ultimately identify actions which can ensure that the projects benefits outweigh the impact on the bio-physical and social environment. The activities which have been undertaken in each of these steps/stages are presented in the subsection below.

#### 4.1 SCREENING & SCOPING

An initial reconnaissance visit was conducted to the site to understand the extent of the site and prevailing environment and social setting in its immediate vicinity and use it as a basis of screening and scoping exercise for the ESIA.

An effort was also made to understand the decision process that led to the selection of the site and how environmental and social issues were factored into the selection process. Discussions with the respective Zone and Division of JUSNL revealed that a number of available plots of land belonging to the government were proposed by the Land Revenue Department and the decision towards confirmation of the site was made based on the following technical, environmental and social considerations:

- A total of more than 8 acres of land was available;
- The plot had good road access;
- It did not comprise of prime agricultural land and did not have any residential premises within it;
- There were no major settlements in the immediate vicinity.

As per the ESMF, an initial environmental and social examination (IESE) was conducted to determine whether or not there would be key environmental and social impacts from the construction and operation of Mahuadanr GSS at the allocated site. The results of the IESE has been recorded in an Environmental and Social Impact Identification Matrix presented in the IA Section (Chapter 6) and was used as a tool for scoping the ESIA to potential environmental and social issues of concern. The IESE also helped in determining the requirement for other specialized studies e.g. Resettlement Plan, Biodiversity Action Plan and Tribal People Plan.

Establishing baseline helps in understanding the prevailing environmental and socioeconomic status of the study area. It provides the background environmental and social conditions for prediction of the future environmental and social characteristics of the area due to the operation of the proposed project during its life cycle.

Considering the project activities described in Chapter 3 it is anticipated that scale and magnitude of project induced impacts are likely to be perceived within 2 km radius of the GSS site location and has been considered as study area for the ESIA. Site surveys were conducted in the study area to understand the environmental setting of the site and the study area, understanding of the drainage patterns, presence of physiographic features e.g. hillocks, rocky outcrops, location of the habitations with respect to the site, condition of the approach road to the site etc. Ecological surveys and community consultations were also conducted to collect the information related to the local community and biological environmental conditions of the study area. Secondary baseline data collection involved identifying and collecting available published material and documents on relevant environmental and social aspects (like soil quality, hydrogeology, hydrology, drainage pattern, ecology, meteorology and socio-economic conditions) from veritable sources including Govt. Departments, Research papers, etc.

The key aim of the impact assessment process was to characterize and evaluate potential environmental and social impacts arising out of the project and prioritize them so that they can be effectively addressed through Environment & Social Management Plans (ESMPs). The potential impacts have been identified through a systematic process wherein the activities (both planned and unplanned) associated with the project, across the construction and operational phases have been considered with respect to their potential to interact with environmental and social resources or receptors. Thereafter, sequential impact assessment steps involving impact prediction, evaluation, mitigation and enhancement and evaluation of residual impacts have been followed in a phased manner.

Prediction of impacts was undertaken as an objective exercise to determine what could potentially happen to the environmental and social receptors as a consequence of the project and its associated activities and took into account baseline conditions at site, stakeholder's opinion and expert judgement. The evaluation of impacts was done using a semi-quantitative, based on the delineation of a set of criteria as follows:

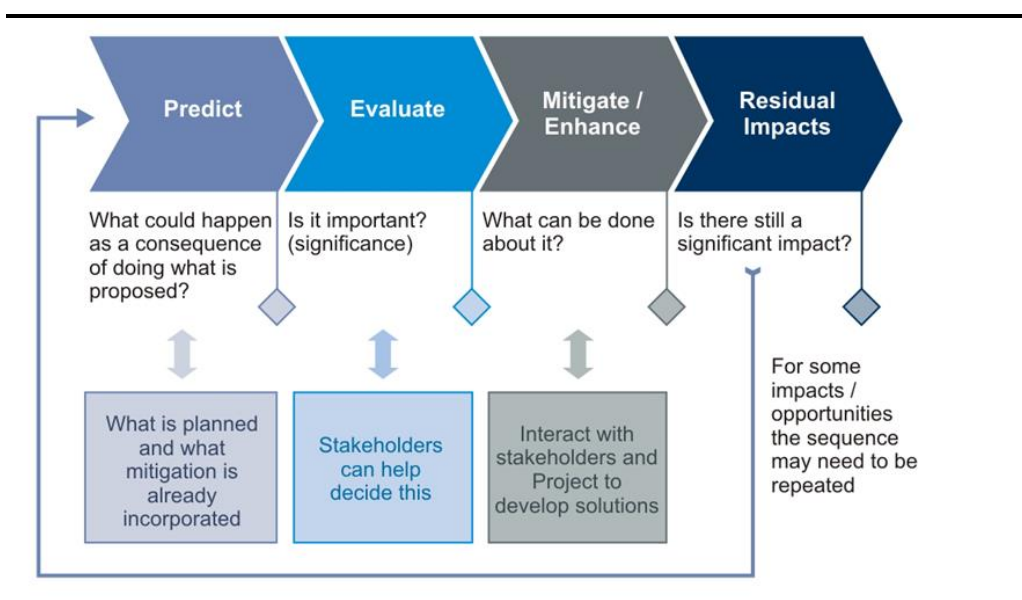
- *Scale*: Degree of damage that may be caused to the environmental and social components concerned.
- *Extent*: The extent refers to spatial or geographical extent of impact due to proposed project and related activities.



- *Duration*: The temporal scale of the impact in terms of how long it is expected to last.
- *Magnitude*: Degree of change caused by a project activity is a function of Scale, Extent and Duration, as applicable.
- *Vulnerability of Receptor*: Represents the sensitivity of the receptor based on the relationship between the project and present baseline environment (the receptor).

Once magnitude of impact and sensitivity/ vulnerability/ importance of resource/ receptor have been characterized, the significance was assigned for each impact using an impact score for each criteria, following a systematic rating method, leading to the qualification of significance of impact as Negligible, Minor, Moderate and Major. The overall impact assessment methodology is presented in *Figure 4.1* below.

**Figure 4.1** *Impact Assessment Process*



#### 4.4 ENVIRONMENTAL AND SOCIAL MANAGEMENT PLAN PREPARATION

The Environmental & Social Management Plan along with a Monitoring Plan has been prepared as a site specific document for the construction and operation of the GSS. The ESMP would act as a guidance document for JPSIP to ensure that they can implement the project in an environmentally sound manner where project planners and design agencies, contractors, relevant government departments and stakeholders of concern understand the potential impacts arising out of the proposed project and take appropriate actions to properly manage them.

## 5.1 INTRODUCTION

This section establishes the baseline environmental and socio economic status of the project site and surrounding area to provide a context within which the impacts of the proposed GSS project to be located in Mahuadanr are to be assessed.

## 5.2 LAND USE/LAND COVER

Total land under the proposed GSS site is 10 acres. The land is fallow and agriculture is not practiced within the proposed site. Forestland is not present within the site or within the study area.

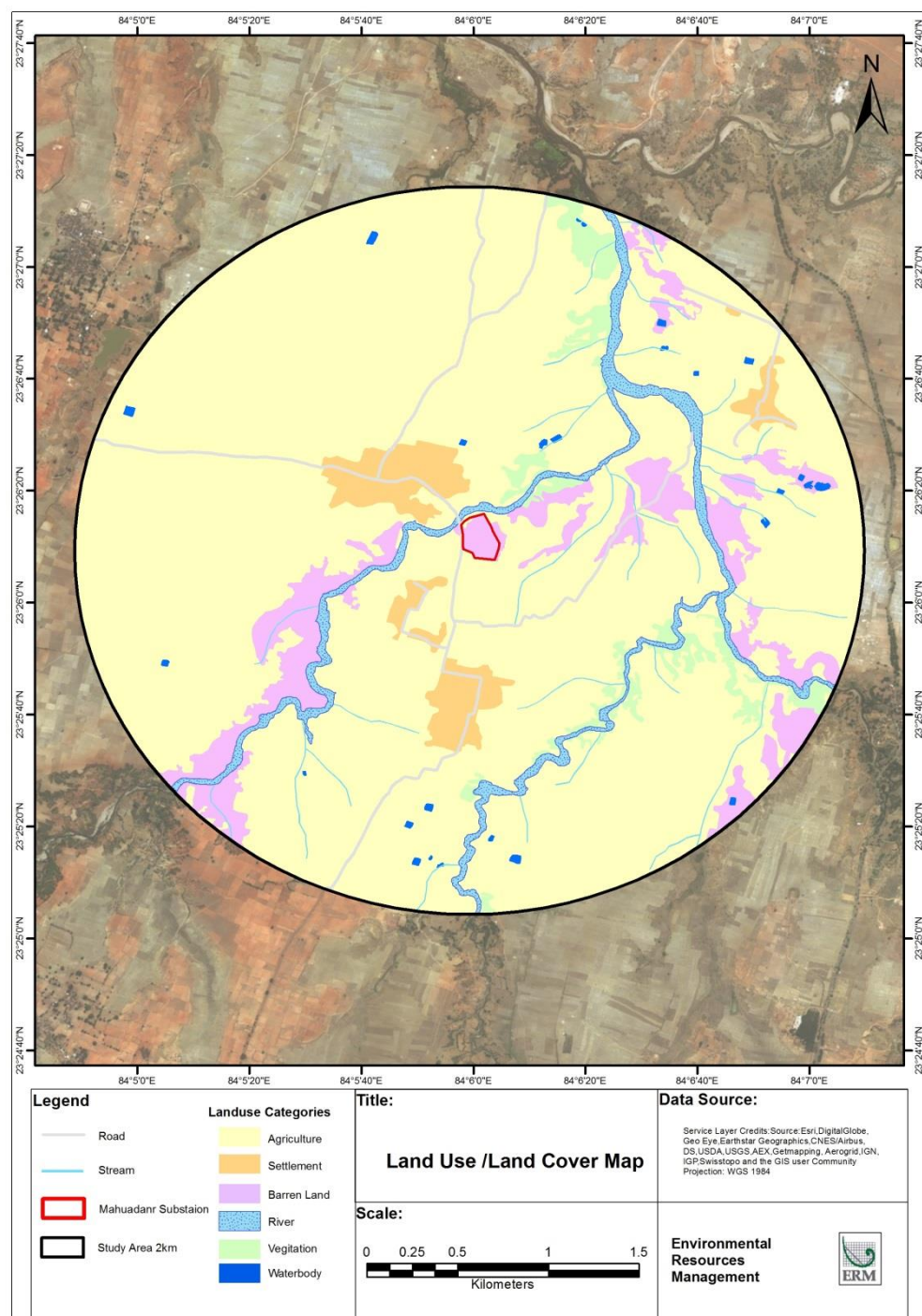
Agriculture land (~ 82.72%) is the most predominant land use with in the study area followed by barren land (~ 6.96%), vegetation (~ 2.50%), river (2.97%), streams (0.64%), roads (0.54%) and waterbodies (0.28%). Existing land cover pattern in and around the study area is provided in *Table 5.1* and the land use map of the study area is shown in *Table 5.1*.

**Table 5.1** Existing Land Use/ Land Cover Pattern of the Study Area

Name	Area in Sq. Km.	Percentage (%)
Agriculture	10.39	82.72
Barren land	0.87	6.96
Settlement	0.43	3.39
Vegetation	0.31	2.50
Waterbody	0.04	0.28
River	0.37	2.97
Roads	0.07	0.54
Streams	0.08	0.64
<b>Total</b>	<b>12.56</b>	<b>100</b>



**Figure 5.1**      *Land Use/Land Cover Map of the Study Area*



### 5.3

#### *SOIL*

The soil of the study area is laterite type derived from weathered basalt and granite rocks. It comprises of red sandy soil<sup>1</sup>. Crops such maize, wheat, groundnut is cultivated in these soils.

### 5.4

#### *CLIMATE AND METEOROLOGY*

Latehar District is characterized by humid and subtropical climate comprising of three distinct seasons – hot and dry summer, cold winter and rainy season. November to March forms the winter season. It is followed by summer season from April to middle of June and rainy season from mid-June to middle of October.

The rainfall in the district is mainly received from the South-West monsoon. The average annual rainfall is 1300mm. Approximately, 90% of the total annual rainfall is received during the monsoon period. The district receives the maximum rainfall from June to October.

### 5.5

#### *NATURAL HAZARDS*

Natural hazard is rare phenomena in Latehar district. There is no reported occurrence of any significant natural disasters in the recent history of Latehar district. According to District Disaster Management Plan 2016, Latehar is vulnerable to Drought, Forest Fires, Earthquake (Zone III) and lightning strikes.

### 5.6

#### *AIR ENVIRONMENT*

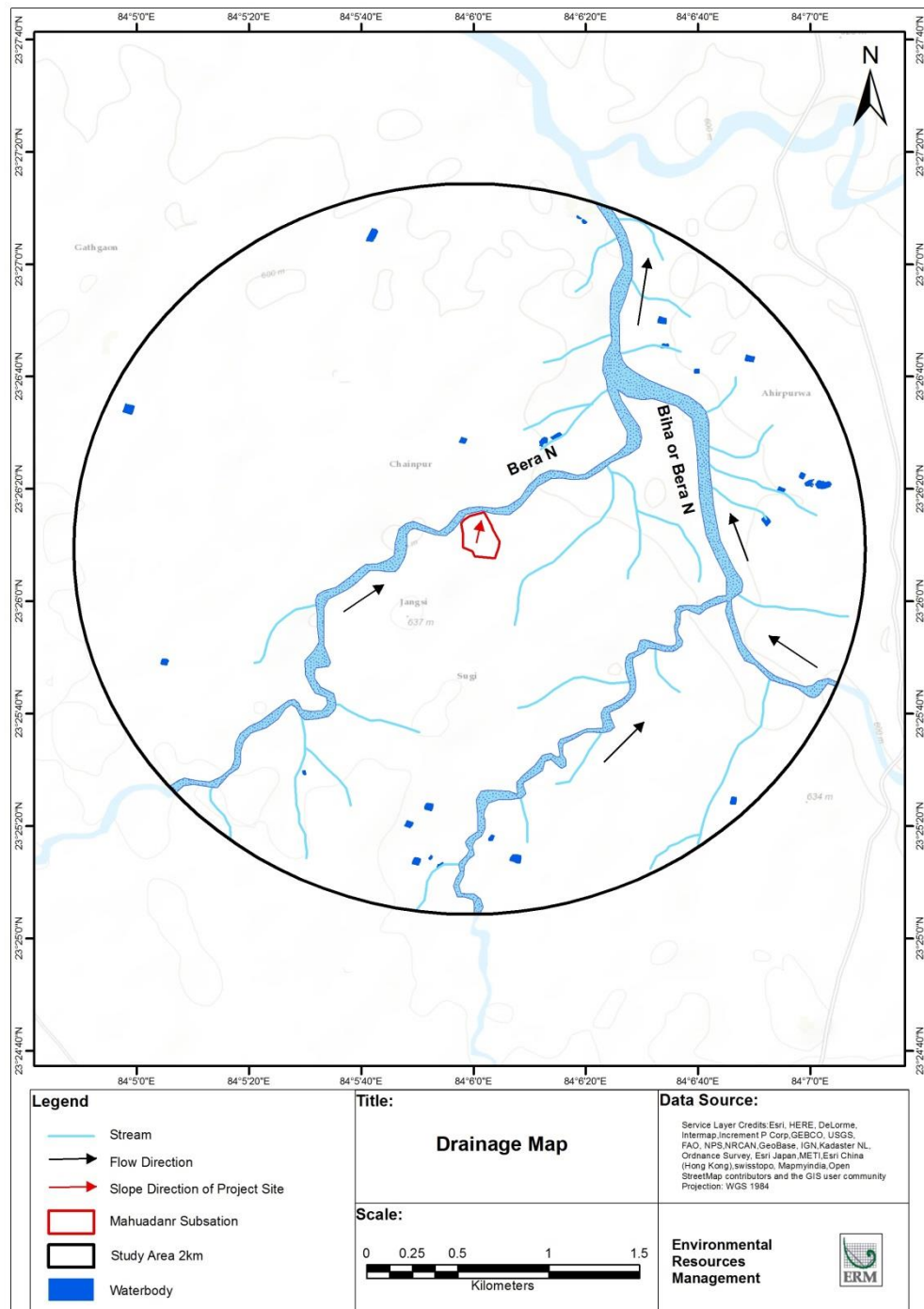
The study area can be characterized as a rural area comprising of habitations, farmlands etc. and no industrial set up was found to be present within 2 km radius of the site. Existing sources of generation of particulate matter and gaseous air pollutants is primarily because of the limited movement of vehicles through adjoining ODR 10 village road from Mahuadanr to Chainpur and from burning of fossil fuels for domestic purposes. Considering this context, the ambient air quality is expected to be well within the National Air Quality Standards for all parameters.

The ambient noise quality of the study area is also representative of ambient noise quality typically expected in rural residential areas. The main source of noise is vehicles plying through the adjoining village road. Limited heavy vehicle movement was observed on ODR 10 during site visits and no significant noise levels were reported by the villagers during consultations.

<sup>1</sup> [http://www.cgwb.gov.in/District\\_Profile/Jharkhand/Latehar.pdf](http://www.cgwb.gov.in/District_Profile/Jharkhand/Latehar.pdf)

The study area has a dendritic drainage pattern that is representative of the drainage characteristics of the micro-watershed adjacent to site and is shown in *Figure 5.2*. There are two rivers, Bera and Birha draining the study area that is joined by several streams. The two rivers meet in the study area and flow Northward as Bohta River. The confluence of the rivers is approximately 1km away from the proposed site.

**Figure 5.2** *Drainage Map of the Study Area*



As per the hydrogeological map of the District drawn up by the CGWB, the hydrogeology comprises of consolidated formation of the Quaternary age and characterized by recent alluvium over laying weathered granite gneiss in which the ground water is occurs within granular zones under unconfined condition. As of 2013, the gross ground water draft for all uses in the Block was 792.66 ha-m and the stage of ground water development was about 16.34%.

From the aquifer characteristic and water resourcing angle, the depth to water table in the Mahuadanr Block is reported to vary between 5-10 m bgl during pre-monsoon season whereas between 2- 5 m. bgl during post-monsoon season (as per CGWB Groundwater Information Booklet for Latehar District, 2013).

Consultations with villagers in the study area revealed that ground water is predominantly used for drinking and domestic purposes and is sourced through dug wells or tube wells. From the ground water quality perspective, the water quality has been found to be potable in general. All the ground water parameters are reported to be within permissible limits and there are no evidences of contamination because of human induced causes.

Bera River flows along the western side of the site approximately 20m away from the proposed site. The Bera River then turns towards East and runs along the Northern boundary of the site approximately 15-20m away from the site. There are other surface water bodies such as ponds which are sparsely present in the study area.

The proposed GSS site in Latehar district of Jharkhand State falls in 6B Deccan Peninsula – Chota-Nagpur Bio-geographic Province<sup>1</sup>.

Natural vegetation in the region can be broadly classified into **C3 Moist Mix Deciduous Forests** and **5B Northern Tropical Dry Deciduous Forests**.

**C3 Moist Mixed Deciduous Forests** –Sal (*Shorea robusta*) is the dominant species. Other species that are associated with sal, in this type of forest are *Terminalia tomentosa*, *Diospyros melanoxylon*, *Buchanania latifolia*, *Anogeissus latifolia*, *Haldina cordifolia*, *Lannea grandis*, *Boswellia serrata* etc.

<sup>1</sup> [http://iipsenvis.nic.in/Database/Envis\\_5275.aspx](http://iipsenvis.nic.in/Database/Envis_5275.aspx)

**5B Northern Tropical Dry Deciduous Forests** – Dominant species is sal (*Shorea robusta*). Other species that are associated with sal are *Terminalia belerica*, *Terminalia chebula*, *Haldina cordifolia*, *Madhuca latifolia*, *Butea monosperma*, *Buchanania latifolia*, *Diospyros melanoxylon*, *Ailanthus excelsa*, *Cassia fistula* etc.

#### 5.10.1 *Vegetation within the Study area*

Approximately 16 trees with species viz. Jamun (*Syzygium cumini*), Aam (*Mangifera indica*), Palash (*Butea monosperma*), Pipal (*Ficus religiosa*), Koenar (*Bauhinia purpurea*) etc. are located within the proposed GSS site.

Other vegetation types within the study area are mentioned below;

##### *Homestead plantation*

During the primary survey trees like jack fruit (*Artocarpus heterophyllus*), bakul (*Mimusops elengi*), aam (*Mangifera indica*), date palm (*Phoenix dactylifera*), kadam (*Haldina cordifolia*), champa (*Michelia champaca*), sugar palm (*Borassus flabellifer*), peepal (*Ficus religiosa*), bel (*Aegle marmelos*), chhatim (*Alstonia scholaris*), siris (*Albizia lebbek*), neem (*Azadirachta indica*), anar (*Punica granatum*), shisham (*Dalbergia sisso*), kumbhi (*Careya arborea*), wad (*Ficus benghalensis*), amla (*Emblica officinalis*), imli (*Tamarindus indica*), asan (*Terminalia tomentosa*), arjun (*Terminalia arjuna*), etc. were found to occur in proximity to the human settlements within the study area.

##### *Roadside plantation*

Trees like babool (*Acacia nilotica*), jack fruit (*Artocarpus heterophyllus*), peepal (*Ficus religiosa*), semal (*Bombax ceiba*), gamhar (*Gmelina arborea*), neem (*Azadirachta indica*), siris (*Albizzia lebbek*), sagwan (*Tectona grandis*), karanj (*Pongamia glabra*), gular (*Ficus racemosa*), tend (*Diospyros melanoxylon*), wad (*Ficus benghalensis*), rain tree (*Samanea saman*), shisham (*Dalbergia sisso*), chhatim (*Alstonia scholaris*), *Eucalyptus* sp. were recorded along the side of the roads within the study area.

##### *Riparian Vegetation*

Riparian vegetation are observed on the sides of streams (Bera River, Birha River etc.) and waterbodies. Major tree species observed is jamun (*Syzygium cumini*), semal (*Bombax ceiba*), siris (*Albizia lebbek*), wad (*Ficus benghalensis*), shisham (*Dalbergia sisso*), *Eucalyptus* sp. etc.

##### *Invasive Alien species*

Following major invasive species recorded in the study area: *Acacia auriculiformis*, *Eucalyptus* sp., *Lantana camara*, *Parthenium hysterophorus* etc.

*Wild Life Habitat*

The proposed site lies within 2.85 km of Palamau Tiger Reserve (PTR) coterminous with Betla National Park, Palamau Wildlife Sanctuary and Mahuadanr Wolf Sanctuary. The draft notification regarding the Eco-Sensitive Zones (ESZ) of Palamau Tiger Reserve has been notified on 30<sup>th</sup> November, 2015. The map of the ESZ along with boundary details and geo-coordinates has been appended with the notification. On geo-referencing the map and overlaying the site it was observed that the site lay within the notified (draft) ESZ of Palamau Tiger Reserve. The notification is silent about the establishment of infrastructures such as Grid Sub-Station and has not listed it as one of the activities that are prohibited, regulated or promoted.

Mahuadanr Wolf Sanctuary, located in Latehar district, is under administrative control of Field Director, Palamau Tiger Reserve. As per the map of *Wildlife Protected Areas of Jharkhand*<sup>1</sup> the proposed GSS site may be included within the Mahuadanr Wolf Sanctuary. Discussion with Deputy Field Director, PTR revealed that there are some modifications in the proposed boundary of the Tiger Reserve and Eco-sensitive Zone and the revised boundaries are not currently posted at the public domain<sup>2</sup>.

Since, the GSS is proposed in the ESZ, a Wild Life Management Plan has to be prepared and requisite permission has to be obtained from the Standing Committee of the National Board for Wild Life (NBWL) as per MOEFCC directive F.No. 1-9/2007 WL -I (pt) dated 9<sup>th</sup> February, 2011 under the Wildlife Protection Act, 1972.

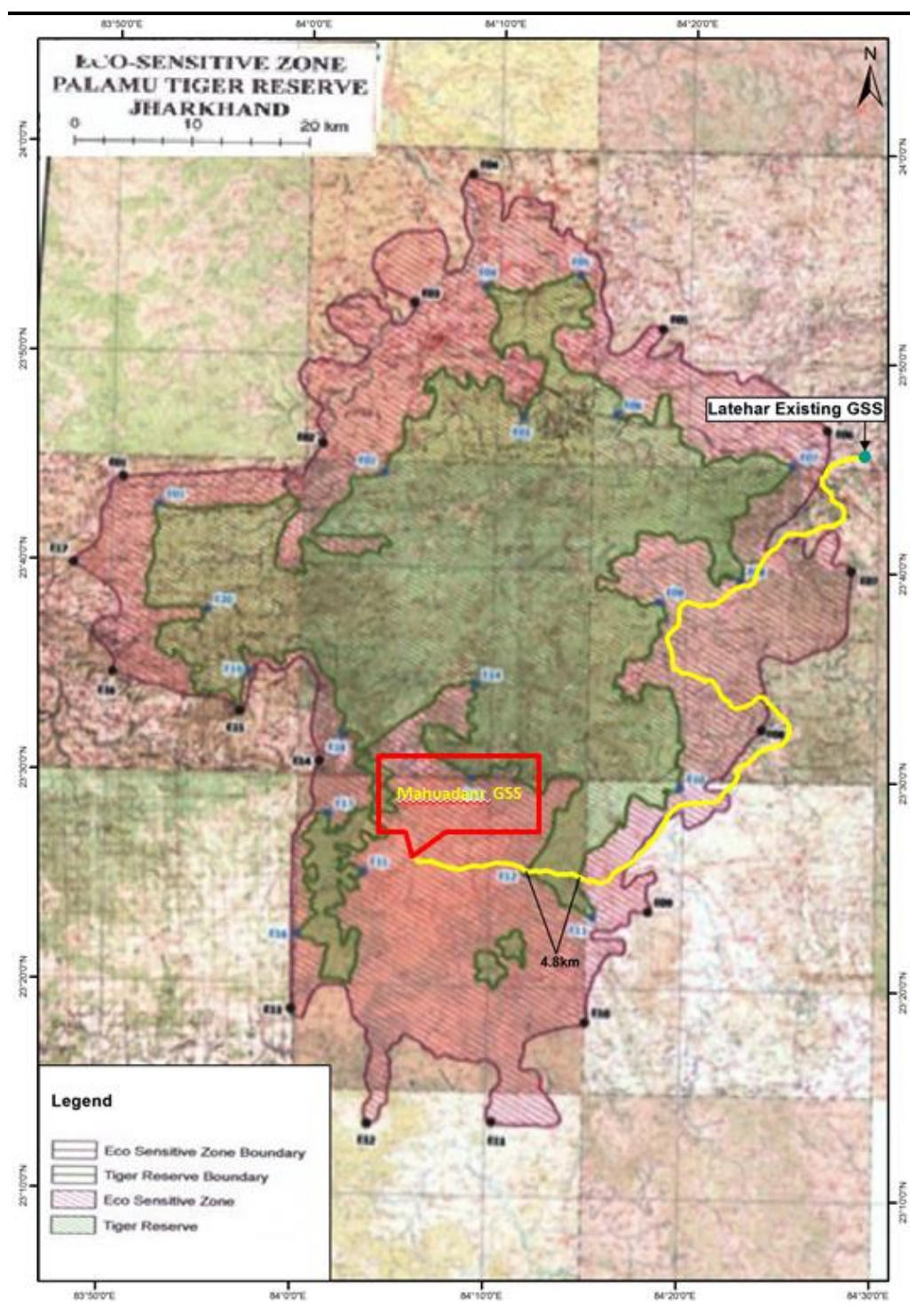
If the GSS falls within any other notified/designated eco-sensitive zone further assessment would be undertaken at a later stage to determine the impact on the ecosystem and biodiversity.

<sup>1</sup> [http://wiienviis.nic.in/WriteReadData/UserFiles/image/PAs\\_Map\\_Database/images/jharkhand1.jpg](http://wiienviis.nic.in/WriteReadData/UserFiles/image/PAs_Map_Database/images/jharkhand1.jpg)

<sup>2</sup> ERM is in pursuit with the Deputy Field Director, for verifying boundary of Mahuadanr Wolf Sanctuary and if the proposed site is included within the sanctuary.



Figure 5.3 Ecological sensitive areas around Mahuadanr GSS site



### Faunal Diversity

#### Herpetofauna

Two species of amphibians viz. Common Toad (*Duttaphrynus melanostictus*) and Indian Bullfrog (*Hoplobatrachus tigerinus*) etc. are observed from the study area. All the species are listed Least Concern as per IUCN Classification (IUCN Version 2017-3). Seven species of reptiles were observed/reported

from the study area. The list includes Indian Cobra (*Naja naja*), Common Krait (*Bungarus caeruleus*), Indian Rat Snake (*Ptyas mucosus*), Common Vine Snake (*Ahaetulla nasuta*), Russel's Viper (*Daboia russellii*), Banded Krait (*Bungarus fasciatus*), Checkered Keelback (*Xenochrophis piscator*), Fan-Throated Lizard (*Sitana ponticeriana*), Oriental Garden Lizard (*Calotes versicolor*) and Common Indian Skink (*Eutropis carinata*). The list includes four Schedule II species as per Indian Wildlife Protection Act (IWPA) viz. Indian Cobra, Indian Rat Snake, Russel's Viper and Checkered Keelback.

### Avifauna

A total of 48 species were recorded from the study area. The species list includes terrestrial and aquatic birds. Terrestrial and aquatic birds recorded are presented below.

Bank Myna (*Acridotheres ginginianus*), Black Headed Oriole (*Oriolus larvatus*), Asian Pied Starling (*Gracupica contra*), Spotted Owlet (*Athene brama*), Ashy Prinia (*Prinia socialis*), Greater Coucal (*Centropus sinensis*) Asian Palm Swift (*Cypsiurus balasiensis*), Indian Tree Pie (*Dendrocitta vagabunda*), Common Iora (*Aegithina tiphia*), Scarlet Minivet (*Pericrocotus speciosus*), Long tailed Shrike (*Lanius schach*), Black Winged Kite (*Elanus caeruleus*), Rufous Woodpecker (*Micropternus brachyurus*), Red Whiskered Bulbul (*Pycnonotus jocosus*), Spotted Dove (*Spilopelia chinensis*), Eurasian Collared Dove (*Streptopelia decaocto*), Common Myna (*Acridotheres tristis*), Paddyfield Pipit (*Anthus rufulus*), House Swift (*Apus nipalensis*), Common Pigeon (*Columba livia*), House Crow (*Corvus splendens*), Black Drongo (*Dicrurus macrocercus*), Asian Koel (*Eudynamis scolopaceus*), Coppersmith Barbet (*Psilopogon haemacephalus*), Little Green bee-eater (*Merops orientalis*), Black Kite (*Milvus migrans*), House sparrow (*Passer domesticus*), Baya weaver (*Ploceus philippinus*), Rose-ringed Parakeet (*Psittacula krameri*), Red-vented Bulbul (*Pycnonotus cafer*), Indian Robin (*Copsychus fulicatus*), Jungle babbler (*Turdoides striata*) etc.

**Aquatic birds-** White-breasted Waterhen (*Amaurornis phoenicurus*), Bronze Winged Jacana (*Metopidius indicus*), White Wagtail (*Motacilla alba*), Purple Heron (*Ardea purpurea*), Common Moorhen (*Gallinula chloropus*), Black Headed Ibis (*Threskiornis melanocephalus*), Cattle Egret (*Bubulcus ibis*), Intermediate Egret (*Ardea intermedia*), Little Egret (*Egretta garzetta*), Grey Heron (*Ardea cinerea*), Indian Pond Heron (*Ardeola grayii*), Pied Kingfisher (*Ceryle rudis*), White-throated Kingfisher (*Halcyon smyrnensis*), Little Cormorant (*Microcarbo niger*), Purple Swampphen (*Porphyrio porphyrio*), Red-wattled Lapwing (*Vanellus indicus*) etc.

Black Kite (*Milvus migrans*) and Black Winged Kite (*Elanus caeruleus*) are listed as Schedule I as per Wildlife Protection Act, 1972. Black Headed Ibis (*Threskiornis melanocephalus*) is listed as Near Threatened as per IUCN Classification (IUCN version 2017-3).



## Mammals

Twelve species of mammals are reported/recorded from the study area. The mammals observed/reported in the study area are Five-striped Palm Squirrel (*Funambulus pennantii*), Indian Crested Porcupine (*Hystrix indica*), Golden Jackal (*Canis aureus*), Common Grey Mongoose (*Herpestes edwardsii*), Rhesus macaque (*Macaca mulatta*), Northern Plains Langur (*Semnopithecus entellus*), Indian Flying Fox (*Pteropus giganteus*), House Rat (*Rattus rattus*), Striped Hyaena (*Hyaena hyaena*), Nilgai (*Boselaphus tragocamelus*), Common Leopard (*Panthera pardus*), Indian Wolf (*Canis lupus*), Wild Pig (*Sus scrofa*) etc. The list includes two Schedule I species viz. Common Leopard, Indian Wolf and four Schedule II species Golden Jackal, Common Grey Mongoose, Northern Plains Langur and Rhesus macaque. Common Leopard is listed as 'Vulnerable', Striped Hyaena is listed as 'Near Threatened' and the other mammalian species as listed as 'least concern' as per IUCN Classification (IUCN version 2017-3). The site is located at a distance of 2.85 km from the Palamau Tiger Reserve; however, discussion with local did not reveal presence of tiger (*Panthera tigris tigris*) and Indian Elephant (*Elephas maximus*) in the study area. Moreover, the movement of wild animals viz. common leopard, Indian wolf, striped hyaena etc. were not reported by the locals within the GSS site and immediate vicinity.

### 5.11 SOCIO ECONOMIC ENVIRONMENT

The proposed Mahuadanr substation is located in Latehar district. As per 2011 Census, the total population in Latehar District is 726,978. The decadal population growth from 2001 has been 29.61%. The population of Latehar forms 2.20% of Jharkhand State. The literacy rate of Latehar District is 59.51% compared to State literacy rate of 66.41%.

According to the 2011 Census, the sex ratio is 967, which is comparatively higher than the state average of 948. The ST population constitutes 45.54% against the state figure of 26.21% The SC constitutes 21.31% of the total population in the state, which is higher than the state population of 12.08%.

As per 2011 Census Data, the total population of Mahuadanr block is 74732. . The literacy rate is 69.62% and the sex ratio is reported to be 971. The total household in Mahuadanr block, where the proposed project site is located, is reported to be 13543 with average household size of 5.52.

#### *Demographic Profile of the Study Area Villages*

Mahuadanr substation is located in Jhangsi village. There are 3 other villages in the study area, namely Chainpur, Ahirpurwa and Sugi. The location of the villages in the study area with respect to site is provided in **Table 5.2**.

**Table 5.2** *Location of the villages in the study area with respect to the GSS*

Village Name	Distance (m)	Direction	Block
Jhangsi	200	South-West	Mahuadanr

Village Name	Distance (m)	Direction	Block
Chainpur	350	North-West	
Ahirpurwa	1450	North West	
Sugi	650	South	

The entire population in the study area falls in the rural category. Demographic profile of the study area villages is presented in *Table 5.3*.

**Table 5.3** *Demographic profiles of the village located within study area*

Village	Total Household	Total Population	Average Household Size	Male	Female	SC Population (%)	ST Population (%)	Literary Rate (%)	Male Literary rate (%)	Female Literary rate (%)
Chainpur	166	1156	6.96	578	578	0	94.64	79.21	88.84	69.68
Jhangsi	42	261	6.21	120	141	0	61.69	63.51	65.00	62.16
Ahirpurwa	61	325	5.33	175	150	0	91.08	59.55	71.92	44.63
Sugi	167	941	5.63	488	453	0	97.24	76.76	84.38	68.70

Source: Census 2011 Data

The total population within the study area is 2683 that resides in 436 households. The highest population was observed to be in Chainpur and the lowest in Jhangsi. The average household size ranges between 5.33 to 6.92.

#### *Demographic Profile of Surveyed Population of Jhangsi Village*

A general socio economic survey of 10 households was conducted during the month of December, 2017 as a part of the ESIA study to validate the present socio-economic scenario of Jhangsi village. The questionnaire template used for administering the survey is presented in Annexure 8. Community consultations were also conducted to supplement the survey findings.

Total no of surveyed population is 56, residing in 10 household and average household size is 5.6. Among the 56 surveyed population, total male and female population is 46.43% and 53.37% respectively and the sex ratio is 1153.

**Table 5.4** *Demographic profiles of the Surveyed Population*

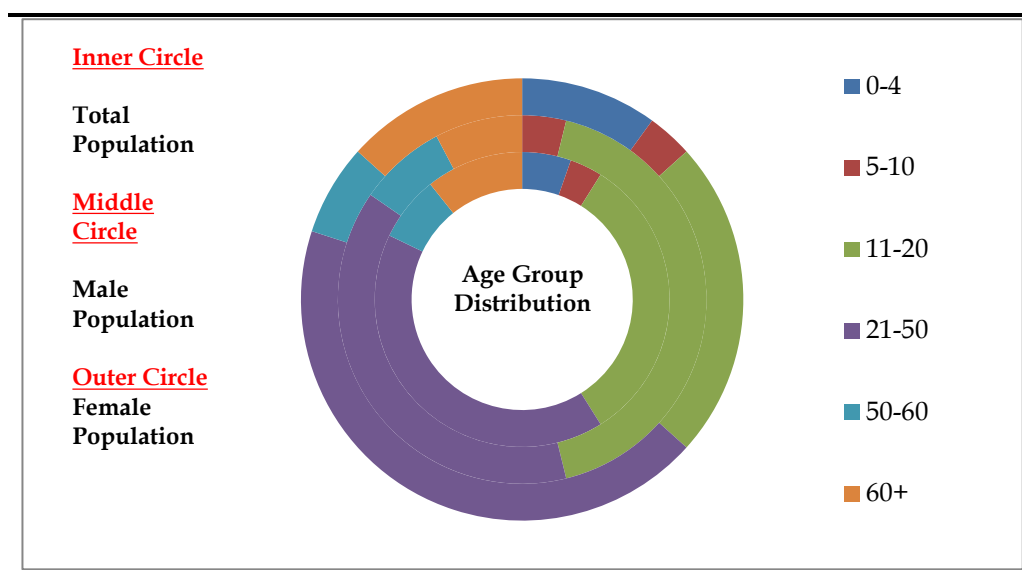
Village	Total Household	Total Population	Average Household Size	Male	Female	SC Population	ST Population	Literary Rate (%)	Male Literary rate (%)	Female Literary rate (%)
Jhangsi	10	56	5.6	46.43	53.37	0	23	60.38	65.38	55.56

Source: ERM Socio Economic Survey

Age group distribution of the surveyed population show that maximum number of population belongs to the working age group of 21 to 50 followed by the young age group (11 to 20) which potentially will become the working

age group in the future. *Figure 5.4* represents the age group distribution of the surveyed population.

**Figure 5.4** *Age Group Distribution of the Surveyed Population*



Source: ERM Socio Economic Survey

#### *SC/ST Population*

There are no Schedule Castes in the study area. Majority of the population in the study area is Schedule Tribe ranging between 61.69% (Jhangsi) and 97.24% (Sugi).

#### *SC & ST Population of Surveyed Village (Jhangsi)*

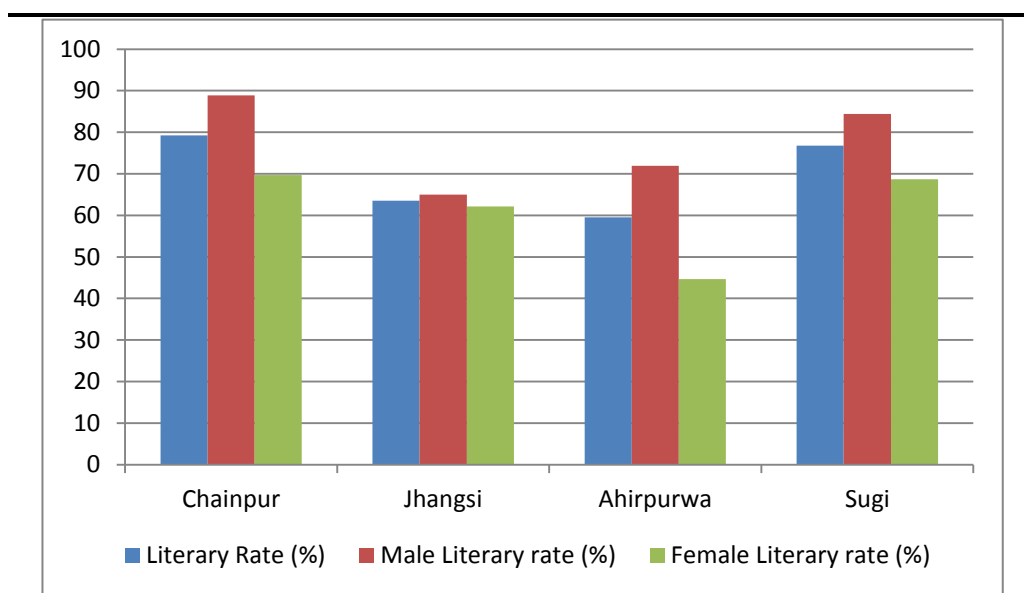
Among the 56 surveyed families, ST population is 23 which is 41.07% of the total surveyed population, they reside in 5 households which is 50% of total surveyed households. Other caste like OBC population is 59%. SC and general cast is not present in the surveyed village.

### **5.11.2** *Education profile*

#### *Literacy Profile*

The literacy rate in the villages of the study area range between 59.55% (Ahipurwa) and Chainpur (79.21%). It has been observed that the literacy rate in Sugi and Chainpur is higher than the state literacy rate of 69.62% whereas that of Jhansi and Ahipurwa is lower than the state literacy rate of 69.62%. Literacy status of the study area village is presented in *Figure 5.5*. It was learned during consultation that mostly teenagers drop out after Secondary School and the key reason against this higher drop-out rate were economic conditions of the families as well as lack of quality education.

**Figure 5.5** *Literacy profile of the study area villages*



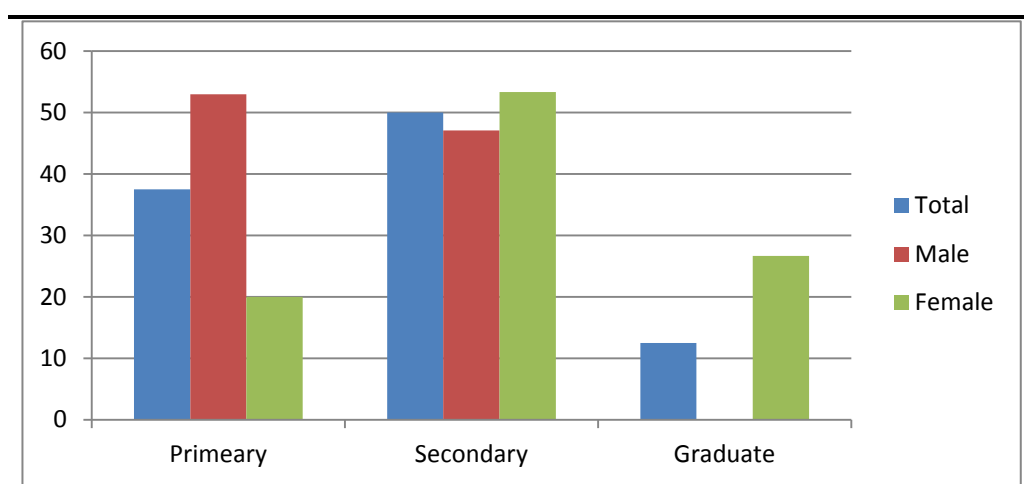
Source: Census 2011 Data

*Educational profile of Surveyed Population of Jhangsi Village*

Out of total 56 surveyed population 60.38% are literate and 39.62% are illiterate. Male and female literacy rate is 65.38% and 55.56% respectively and illiteracy rate is higher amongst the female population in comparison of male population.

Educational status of surveyed population shows that maximum category of population are either educated up the secondary level or continuing their education in secondary level. Educational status of the surveyed population presented in *Figure 5.6*.

**Figure 5.6** *Educational Status of the Surveyed Population*



Source: ERM Socio Economic Survey

### *Educational Infrastructure of Surveyed Village*

All respondents informed that a Primary school is present within 1 to 1.5 km of the village. In case of higher educational infrastructures, secondary school, college is not present within the 1 to 1.5 km of the Jhangsi village.

### *Occupational Pattern of the Study area Villages*

Agriculture is the mainstay of the local economy of the study area. Agriculture labourers constitute significant portion among the different occupation followed by the people in study area. Classification of working population of the study area as well as of the study area as per census 2011 data is presented in the **Table 5.5**.

**Table 5.5** *Occupational pattern of villages in the study area*

Name of the village	WPR	Main Workers	Marginal Workers	Cultivator	Agricultural Labourers	Household Industry	Other Workers
Jhangsi	32.35	22.99	77.01	38.24	38.77	1.34	21.66
Chainpur	22.61	38.98	61.02	50.85	38.98	0.00	10.17
Ahirpurwa	54.77	2.81	97.19	63.48	30.34	1.12	5.06
Sugi	22.10	99.04	0.96	94.23	0.96	0.00	4.81

Source: Census 2011 Data; Note: WPR – Work Participation Ratio

Work Participation Ratio (WPR) <sup>(1)</sup>, defined as percentage of total workers including main and marginal workers out of the total population of the study area ranges from 22.10-54.77% which suggests that the villages have relatively higher unemployment rate as most of people are involved in agriculture.

### *Economic Status of the Surveyed Population*

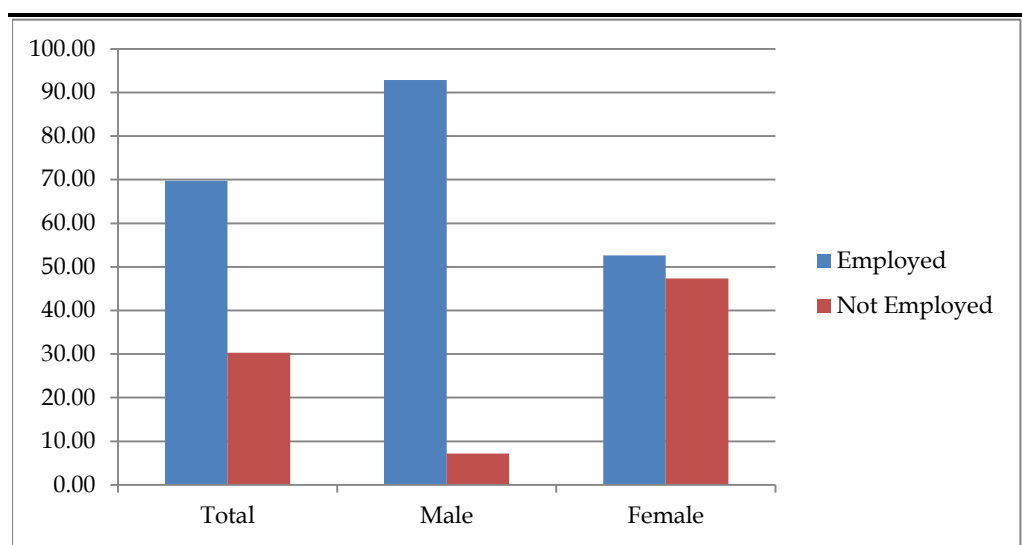
The survey conducted by the ERM team revealed that maximum (80%) household is under below poverty level and only 20% household is above poverty level.

### *Employment Status of the Surveyed Population*

It can be seen from the primary survey data that 69.70% of the surveyed population above the age of 20 are employed while 30.30% population are not employed. The male and female employment rates among surveyed households were found to be 92.86% and 52.63% respectively. It can also be deduced from figure below that unemployment rate is higher in female population than the male population. This is because most of the women in the village were mainly involved in household work. Employment status of surveyed population is presented in **Figure 5.7**.

(1) Work Participation ratio (WPR) is defined as percentage of total workers including main and marginal workers out of the total population of the study area

**Figure 5.7**      *Employment Status of the Surveyed Population*

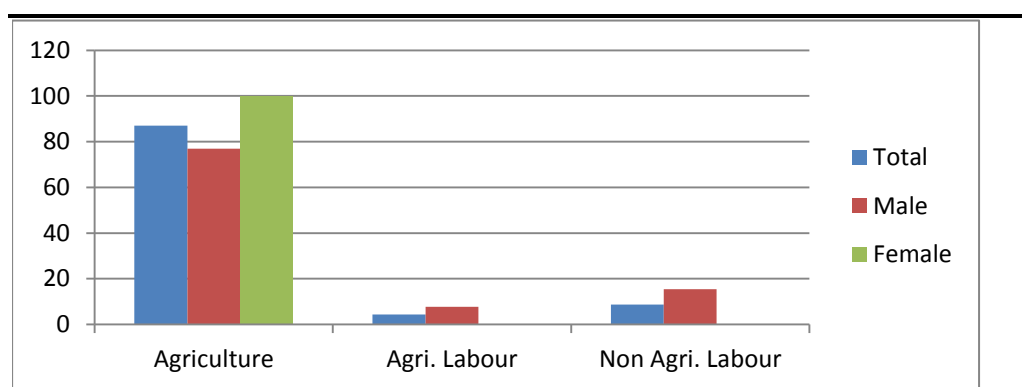


Source: ERM Socio Economic Survey

#### *Occupational Pattern of the Surveyed Population*

Among the surveyed population majority (86.96 percent) number of people is involved in agricultural activity in their own land. It can be also seen from the figure below that involvement of female population is much higher than male population in case of agricultural activity in own land. Main reason behind that male member of the family are going out of the village to earn livelihood from different non-agricultural activities like non-agricultural labour, business, service etc. as earning from agricultural activity is not enough to sustain the family. **Figure 5.8** represents the occupational pattern of the surveyed population.

**Figure 5.8**      *Occupational Pattern of the Surveyed Population*



Source: ERM Socio Economic Survey

#### **5.11.3**      *Skill of the Surveyed Population*

Survey data show that the residents of this village are not having any significant indigenous skills.

#### 5.11.4 *Drinking Water & Sanitation Facilities*

The social organization and settlement pattern in the study area is predominantly arranged around the available agricultural land and water resources in the area. Land based livelihood being the key feature of the community, proximity and availability of water is often linked to the economic status of the family/ household. Also, typically in a village, water for drinking and other purposes defines the household hygiene/ sanitation and ultimately the standard of living of the community. For drinking purpose, availability of water is mostly in the form of:

- Ground water sourced through hand pump and well serve mostly to the needs of household drinking water consumption however no filtration facility is available for drinking water;
- Supply of water is not available in study area villages;

As per community consultation very few household in the villages in the study area have access to individual sanitation facility and majority of the community reportedly resort to open defecation.

Primary surveys revealed that maximum (90%) number of families are dependent of tube well and only 1 household is dependent on dug well for fulfilling their drinking water and domestic use water requirement. All the sources, both hand pump and dug well, are shared resources among the families.

#### 5.11.5 *Irrigation*

Community consultations reveal that irrigation facilities in study area do not exist and farmers reported that they were entirely dependent upon rainwater for cultivation. Though use of water drawn from wells was reported, the same was confirmed to be rare.

### 5.12 *HEALTH INFRASTRUCTURE*

Health care infrastructure of the study region is captured in the table below.

**Table 5.6** *Health care facilities in study area*

Study villages	Hospitals	PHC	Sub-Centre
Jhangsi	0	1	0
Chainpur	0	0	0
Ahirpurwa	0	0	0
Sugi	0	0	0

Source: Village Directory, Census 2011

A Primary Health Centre is present in Jhangsi village in the study area. However all the respondent says that they will depends on private hospital.

*Road & Transportation*

All the study area villages except Ahirpurwa are connected with Mahuadanr through a metalled road. For the local transportation, use of auto rickshaw is very common in the study area.

*Electricity*

Electricity is not present in the villages of the study area.

*Postal Service, Bank, Telecommunication*

As per 2011 census data, post office is available in all the four villages in the study area. However, none of the villages in the study area have operational branches of commercial banks. A cooperative bank is present in Jhangsi village.

*Status of Govt. of Scheme Implementation in Jhangsi Village*

Implementation of Govt. Schemes is not in full force in the surveyed village. Swachh Bharat Abhiyaan (toilet) is the most successfully implemented government schemes in the village. Total 7 households are beneficiary of this scheme.



This section identifies and assesses the potential impacts to the physical, biological and socioeconomic environment that can be expected from the proposed substation project at Mahuadanr. The impacts due to the project activities across different phases have been identified and assessed. Impacts are identified and predicted based on the analysis of the information collected from the following:

- Project information (as outlined in *Section 3*);
- Baseline information (as outlined in *Section 5*).

## 6.1

### POTENTIAL IMPACT

The identification of likely impacts during construction and operation phases has been carried out based on understanding of activities and their consequent impacts on various environmental and socio-economic resources or receptors. The impact identification matrix in *Table 6.1* captures the likely interactions between the activities on one axis and the resources / receptors on the other axis.

Table 6.1 Scoping Matrix for Mahuadanr Substation

Project Activity/ Hazards	Environmental Resources										Ecological Resource				Social-Economic Resources									
	Aesthetic & Visual Impact	Land Use	Soil Quality	Air Quality	Noise & Vibration	Topography & Drainage	Surface water resource	Surface water quality	Ground water resource	Ground water quality	Traffic (Road)	Terrestrial Flora	Terrestrial Fauna	Aquatic Flora & Fauna	Protected /Migratory Species	Migratory Path/Corridor	Job & economic opportunity	Economy & Livelihoods	Common Property Resources	Land Use (Economic Displacement)	Infrastructure & Services	Cultural Resources	Community Health & Safety	Occupational health & safety
Construction Phase																								
Land Procurement																								
Clearance (Vegetation & other structure)																								
Site Development (cutting & filling)																								
Construction of Site access road																								
Transportation of construction materials, equipment & machineries																								
Storage & handling of construction materials																								
Construction of switch yard and Other building																								
Storage, handling and disposal of construction waste																								
Generation of sewage and discharge																								
Sourcing of construction water & domestic water																								
Generation of surface runoff from construction site																								
Operation Phase																								
Physical presence of substation																								
Maintenance of Substation & generation of transformer oil and e-waste																								
Sourcing of water for earthing pit & residential units																								

Project Activity/ Hazards	Environmental Resources										Ecological Resource				Social-Economic Resources									
	Aesthetic & Visual Impact	Land Use	Soil Quality	Air Quality	Noise & Vibration	Topography & Drainage	Surface water resource	Surface water quality	Ground water resource	Ground water quality	Traffic (Road)	Terrestrial Flora	Terrestrial Fauna	Aquatic Flora & Fauna	Protected /Migratory Species	Migratory Path/Corridor	Job & economic opportunity	Economy & Livelihoods	Common Property Resources	Land Use (Economic Displacement)	Infrastructure & Services	Cultural Resources	Community Health & Safety	Occupational health & safety
Storm water runoff																								
Generation of MSW & Disposal																								
Generation of sewage & discharge																								
<div><div></div> = Represents “no” interactions is reasonably expected</div> <div><div></div> = Represents interactions reasonably possible but none of the outcomes will lead to significant impact</div> <div><div></div> = Represents interactions reasonably possible where any of the outcomes may lead to potential significant impact</div>																								

The details of the activities and their impacts have been discussed in detail in the following sections.

#### 6.1.1 *Impact on Aesthetic and Visual*

Potential impacts to aesthetics and visual quality because of the setting up and operation of the Mahuadanr GSS may arise because of two key factors – disruption and degradation of visual quality in the surrounding landscape; and, use of nighttime lighting for construction and security purposes. Visual impacts of GSS projects along with associated transmission lines (in and outgoing) are highly variable and depends on several factors like location of the project, lines of sight, scenic vistas and most importantly the perception of the people. Degradation of views from setting up of the GSS in the identified plot of land may result from cutting of trees and vegetation clearance, handling of construction and domestic wastes, and setting up of physical infrastructure (including some transmission towers which are to be constructed on the boundary of the site) associated with the GSS. After the GSS is commissioned, nighttime security lighting would be operational and would lead to addition of strong artificial lights in what is at present is a predominantly rural area with no street or external lighting. With the study area, not being recognized as a place of natural scenic beauty or a touristic destination, these factors are unlikely to lead to any significant adverse visual and aesthetic impacts in the area and it can be rated as **negligible**.

#### 6.1.2 *Air & Noise Quality*

The GSS is not planned to house any point or area source of air emissions (particulate matter, pollutant gases, etc.) and neither does the study area have any industrial air pollution sources – village road that connects Mahuadanr with Chainpur through Sugi and Jhangsi Village passing adjacent to the site along its western edge, through which regular vehicular movement occurs is the only line source of air pollution, caused by vehicular emissions and because of re-entrained dust from the road surface. Based on visual observations, the quality of the air shed can be categorized as good and no indicators or existing sources of air pollutants were noted in the study area that could potentially result in air quality parameters to exceed National Ambient Air Quality Standards (NAAQS).

During site preparation and construction, the project is likely to generate dust (as particulates) in spite of best efforts to control it and there will be times during the construction phase when elevated dust concentrations may occur. Higher amounts of dust will be generated at places where earthwork, cutting and filling operations take place or in material handling and storage areas. A large percentage of such dust emissions from construction sites have been found to comprise of particles which are coarse in size (>10 microns) and has a tendency to settle down within a few hundred meters of the source of emissions. The smaller fractions (PM<sub>10</sub>) can however be carried over longer distances in a dust cloud, in the case wind velocity is higher and depending on prevailing wind direction maybe deposited in the adjoining *tola's* of Bhusur village or the settlements of Hetangadu and Charu with a potential to cause

soiling of residential premises, deposition on agricultural crops, etc.. However, this will be a short-term impact lasting for a few months. Particulates, CO, SO<sub>x</sub>, NO<sub>x</sub> and unburnt hydrocarbons (VOCs) will be emitted by vehicles, batching plants (if used), heavy equipment and DG sets associated with site clearing and construction activities.

The operational GSS site at Mahuadanr will not have any specific source contributing to air emissions. However, the site will house transformers, switches and associated cables which may contain insulating gases such as Fluorocarbons and Sulfur hexafluoride (SF<sub>6</sub>). If accidentally released during maintenance work or equipment overhauling, they may release these gases which are categorized as greenhouse gases and having significantly higher global warming potential (GWP) than CO<sub>2</sub>. The frequency of such non-routine incidents is predicted to be very few in the entire lifecycle of the operation of the GSS. Overall, the impact on air quality during the construction and operational phase of the project can be rated as **negligible to minor**.

Noise and vibration at the Mahuadanr GSS site is expected to be primarily generated during the site preparation and construction phases of the project. Such noise may be generated from blasting (if required), operation of heavy construction equipment and machineries, DG sets and the transportation of equipment and materials. During operational phase, the transformers and switches to be installed within the GSS would also emit typical humming noise caused because of magnetostriction (involving the expansion and contraction of the iron core due to the magnetic effect of alternation current flowing through the transformer coils). Though the emitted noise may vary in characteristics depending on the rating of the transformer, typically the intensity and amplitude transformer emitted noise is about 120 Hz and 55 dB (A). As the transformers and other sound emitting equipment would be located well within the boundary of the site, any incremental contribution to the ambient noise quality at the boundary of the site would be negligible.

The study area has no major noise sources, except for vehicular noise on the adjacent village road. The noise generated from the construction phase activities is likely to be attenuated to acceptable levels as per the ambient noise standards within 200 m of the site. Such noise may however, cause discomfort the construction workers at site and nearby receptors at the settlement (*tola*) of Jhangsi village. The construction activities, especially those with a potential to generate high noise levels would be temporary in nature and are not expected to last more than 12 months. The spatial scale of impact will be limited to a few hundred meters. The overall significance of the noise related impacts is rated as **minor**.

### 6.1.3 *Impact on Land use, Soil & Drainage*

The proposed Mahuadanr GSS is planned to be constructed over 10 acres of land. The present land use of the site is categorized as GM land (Parti Kadim) without any vegetation cover. JSUNL will divert the land use of the tract of land to industrial use and this would result in a permanent change of land use. Because of the nature of the project and low level of anthropogenic

activity to be associated with the site during operational phase, it is unlikely that the GSS project would induce any significant change of land use in other land parcels in the immediate vicinity.

As the site is located on a flat land with a gentle slope, the preparation of land for the construction activities at site would involve soil stripping and limited cutting, filling and levelling activities in order to make the site topography suitable for setting up of the GSS. As the site has lateritic soil which is loose in nature, removal of top soil can increase the potential for soil erosion during a short period of time till the site is levelled and then stabilized with fill materials like gravel, sand and fly ash. There is also a potential for local level changes in drainage pattern of the area, though the drainage to the second order drainage to the north northeast of the site is unlikely to be affected because the prevailing gentle slope leading to the catchment of the drainages. If proper soil erosion control measures are implemented, these impacts will be in the short term and unlikely to be severe in terms of scale and magnitude.

Disposal of solid waste and spills of lubricants, fuels and chemicals during land clearing, terrain sloping, levelling and construction activities creates the potential for soil and water contamination. The specific type of solid wastes likely to be generated during the construction of the Mahuadanr GSS sites would include defective or compromised building materials, waste concrete, wastes from on-site machineries and repair of machineries and equipment, packaging pallets and crates and wastes associated with on-site activities of workers (in relation to the number of workers present) like domestic solid wastes.

During the operational phase, hazardous wastes generated from the GSS would include small quantities of used oil, contaminated absorbent material, burned out bulbs or tube lights, used parts, scrap and debris. The transformer oil is expected to be changed every 15 years and the waste oil is planned to be reused through authorized recyclers. E-waste (electrical parts, panels, etc. which will need replacement) and used lead acid batteries would also be collected and disposed of or recycled through authorized agencies. In addition, as all hazardous waste will be stored in covered areas which have a lined floor and with appropriate physical barriers for containment of spills, it is very unlikely to contaminate soil or underlying groundwater at site. Overall, the impact on drainage and soils is expected to be **minor**.

#### **6.1.4**      *Impact on Water Resources*

Water resourcing requirements for a GSS project are minimal, as there is no process or activities that require a steady supply of water. In the operational phase, water would need to be sourced on the long term to meet the domestic needs of about 16 – 20 people and the daily requirement would be about 8.4 KLD. The water requirement during the construction phase is expected to be more intense – an estimated amount of 10-12 KLD (including provision for domestic water supply to labourers of approx. 2 KLD) and about 3-4 KLD during the rest of the construction period. It is estimated that the civil works

would be completed within 1 year and the construction phase would last 2 years.

With no nearby source or provision to provide piped or treated water from a surface water being present, the project would depend on extraction of ground water resources, using a bore well, to be dug at site. The bore well would be planned to extract water from the deeper aquifers that are at the level of 50 to 120 m. As per CGWB report (2013), the level of ground water development in the Mahuadanr Block is 16% should be sufficient to meet the water requirement of the Mahuadanr GSS during the short to medium term. The neighboring settlements source water using dug wells and tube wells and both of them utilize the shallow, near shallow aquifers; so, there is expected to be no conflicting demands on ground water resources. Considering the amount of water planned to be sourced, the limited spatial extent that would be impacted and the sensitivity of the resource, the significance of the project's impact on water resources can be considered to be **minimal**.

#### **6.1.5**      *Impact on Surface Water Bodies*

The site is expected to generate surface water runoff, both during the construction and operational phases, when it rains and the water will be channelized through a storm / surface water drainage system through a point of discharge, to an existing natural drainage channel maintaining gravity flow, for further drainage into an adjacent Bera river. Runoff from the GSS site, if allowed to flow off areas where wastes are stored (as has been identified in the previous sub-section) or from areas where contaminants like lubricants, fuels and chemicals have been spilled, have the potential to impact the receiving surface water body or stream. During operation, about 7 KLD of domestic waste water / sewage will be generated from the residential quarters and the toilets. The sewage would be treated through a septic tank system and any overflows along with the domestic waste water would be discharged through an outlet into the nearby surface water drainage, meeting prescribed standards for surface water effluents. The likely impact is expected to be **minor**.

#### **6.1.6**      *Impact on Biological Environment*

As discussed earlier, approximately 16 matured trees and few shrubs and herbs present within the proposed GSS site. Site preparation will involve removal of the trees, shrubs and herbs present at site, which will cause change in the modified habitat within the site leading to a loss of floral biodiversity at local level.

Faunal species that have high probability of occurrence within the site include amphibians (Common toad), reptiles (lizards and snakes), birds (House crow, Common sparrow, Common myna, Drongo, doves, parakeets, kites etc.) and mammals (Indian Grey mongoose, squirrel, rats, macaques, langurs, wild pig etc.).



The proposed site lies within 2.85 km of PTR, however, the site lie within the boundary of the ESZ (draft) of PTR. The site may also be located within the Mahuadanr Wolf Sanctuary. ERM is in the process of engaging with the District Forest Department to obtain the revised boundaries of the PTR (and its ESZ) including the Mahuadanr Wolf Sanctuary. Since, the GSS is proposed in the ESZ, a Wildlife Management Plan has to be prepared and requisite permission has to be obtained from the Standing Committee of the NBWL before commencement of site construction.

Removal of vegetation from the site can adverse on residential burrowing faunal species *viz.* reptiles (lizards and snakes), ground roosting birds (sparrows, pigeon, doves etc.) and mammals (mongoose, rat etc.). Movement of common leopard and striped hyaena are reported from the study area, which are 'Vulnerable' and 'Near Threatened' respectively as per IUCN Classification (Version 2017-3). Common Leopard and Indian Wolf are also reported in the study area, which are Schedule I species as per the Wildlife Protection Act, 1972. However, the movement of common leopard, Indian wolf, striped hyaena etc. were not reported by the locals within the GSS site and immediate vicinity. The faunal species, if disturbed by the construction activities, movement of machines, influx of labours etc. may relocate to other local habitats that are adjacent.

The floral species that would be affected because of site clearance and preparation are few trees, shrubs and herbs. The loss of trees, shrubs and herbs from the site will not create any habitat degradation or fragmentation in the area. None of the floral or faunal species expected to be present within the site is threatened as per IUCN Classification (Version 2017-3). Vegetation clearance may affect the faunal species mentioned above, however, there are similar habitats in the vicinity and the species can easily relocate to those areas. The scale of impact will be medium as it causes irreversible damage to a modified habitat. Duration of the impact will be long term as vegetation clearance would create a permanent impact within the site area. Extent of the impact would be only within the project site and immediate vicinity.

Construction activities will include excavation, movement of machineries, increased anthropogenic movement (men and transport) and may lead to minor disturbances to floral and faunal habitats in the vicinity of the site because of deposition of dust, noise and light generated during construction activities may affect feeding, breeding and movement of animals. However, these disturbances will be for a temporary period and expected to be of low magnitude and local in scale.

During the operation phase, several species of birds identified during the ecological study, which can perch (*viz.* doves, pigeon, mynas, kites etc.) or make nests within the GSS area (*viz.* sparrows, pigeons, doves etc.) with a possibility for electrocution. The same could occur to small mammalian species like mongoose, macaques etc. may get electrocuted within the GSS area. However, the chances of birds and mammalian species getting electrocuted within the GSS site are rare. However, the site has bird and

mammalian species protected under Schedule I of the IWPA and therefore the site has been deemed to have medium sensitivity. Overall the significance of impact on biological environment can be rated as **moderate**.

If the proposed GSS falls within Mahuadanr Wildlife Sanctuary or any other notified/ designated eco-sensitive zone further assessment would be undertaken at a later stage to determine the impact of the construction and operation of the GSS on the ecosystem and biodiversity.

#### **6.1.7      *Impact on Socio-economic Conditions***

Proposed Mahuadanr GSS will be constructed on 10 acres of land, which belongs to the government and therefore would not require any land acquisition (through any involuntary mechanism / application of powers of eminent domain) or negotiations for purchase of land for setting up the project. In addition, no encroachments or encumbrances within the land parcel either in form of agricultural or residential uses was noted within the demarcated site and as a result no displacement or adverse impact on livelihoods (of people) are expected because of the uptake of land to build the GSS. In terms of cultural and religious property, there is a graveyard located just outside the southwestern corner boundary of proposed site-any disturbance may lead to local community agitation. Other than this, no dependency of the local people on the proposed land was recorded during consultations with the community.

However, several nominally positive socio-economic impacts can result from the project. There is scope for generation of indirect employment opportunities generated during the site preparation and construction phases of the project. It is anticipated that about 50 workers would be employed during the construction phase and it is expected that part of these workers, especially need for unskilled workers, that also includes unskilled workers. The demand for the unskilled workers may be met from local villages. There would also be a scope for some small contracts to be provided to local contractors for supply of construction materials, vehicles, tractors, etc. In addition, the presence of workers, contractors, engineers during the construction period is expected to stimulate a demand for other economic activities (shops, restaurants, etc.) and thus giving a boost to increased purchase from local businesses. It should be noted that these opportunities would be in the short-term, as the operational phase of the project would involve the deployment of a small number (about 8 – 10) of technical skilled workmen (mostly engineers). Both the beneficial and adverse socio-economic impacts can be rated to be minor in terms of significance.

#### **6.1.8      *Influx of Labour***

It is envisaged that during construction phase of the project, labourers for various jobs such as civil, mechanical and electrical works will be hired through authorized manpower agencies. Even though unskilled labour force

can be sourced locally, for skilled labour required for the project would be primarily migrant labour.

The influx of migrant labour will have both negative and positive impacts on the nearby community and local environment. The labour will be accommodated in temporary campsite within the project boundary, which can have some interface with the nearby community. However, the influx of migrant workers would lead to a transient increase of population in the immediate vicinity of the project area for a limited time. This may put some pressure on the local resources such as roads, fuel wood, water etc. Some of the significant issues related with migrant labour would include:

- Conflict amongst workers, and between workers and local community, based on cultural, religious or behavioral practices;
- Discontent amongst local community on engagement of outsiders;
- Outbreaks of certain infectious diseases;
- Security issues to local women from migrant workforce;
- Use of community facilities such as health centers, temples, transport facility etc. by migrant labour may lead to discontent with local community; and
- In case contractors bring in unskilled migrant labour, there stands the risk of exploitation of a labourer. This can happen in the form of hiring underage labourers, low and unequal wage payments, forced labour and discrimination on basis of the basis of caste, religion or ethnicity.

The impacts described above may primarily extend to the settlements in the immediate vicinity, therefore localize in nature. From the context of project site setting, it would be noted that, no vulnerable community like women headed family etc. was recorded from community consultation and from socioeconomic survey.

The socioeconomic survey in Jhangsi village, indicates that there is approximately 43.25 % population unemployed and 34% work as daily wage labour (agriculture and nonagricultural). The finding indicates that there is a pool of labour-resource who can be engaged in the project as unskilled labour. The project would source unskilled workers from surrounding villages. In addition, a planned labour camp for skilled workers within the GSS site may further reduce the assessed potential impacts related to labour influx. Therefore, impact from labour influx is evaluated to be of **minor** significance.

#### **6.1.9**      *Impact on Community Health and Safety*

Experience shows that because of its nature and scale, project like GSS's can be expected to have a limited interface with the local community and as a result will have minimal impact on the safety and health of local communities. During the construction stage of the project, there will be an influx of workmen and labours, with some of them being from different socio-cultural settings as compared to the villages around site. In the case that hygienic conditions are not maintained at the construction site, there may be a vector borne disease and other ailments in the immediate vicinity. Unless proper

sensitisation of neighbouring communities is undertaken and appropriate safeguards are adopted, there is a possibility for increase in sexually transmitted diseases, though the possibility appears quite remote.

The site clearing activities and construction activities (involving fill materials, brick and concreting work) would result in emissions of dust and noise, discharge of sanitary waste water and potential littering from labour quarters for around 12 months and has a potential to contribute to additional nuisance levels for the local community. However, there is no people living close to the site and the habitation (*tola's*) of Jhangsi village being located at a distance of 350 m, no significant health related impacts are expected to the communities in the area. The increase in vehicular movements as a result of plying of construction vehicles on the adjoining highway and the site access road would add to the risk of accidents in which local villagers may be involved. In addition, the GSS project would have incoming and outgoing transmission lines (132KV), house transformers and associated equipment which has the potential to create electro-magnetic fields (EMF). Although there is a public concern over the potential health effects associated with the exposure to EMF, empirical data is insufficient to demonstrate adverse health impacts from typical EMF levels originating from high voltage power lines and substation equipment. Considering good construction practices and planned embedded measures for mitigating these impacts, the overall significance of community health and safety impacts can be rated to be **minor**.

#### **6.1.10**      *Occupational, Health and Safety*

During the construction phase of the project, about 50 workers would be involved in construction related activities, some of which are inherently unsafe, unless adequate precautions and safeguards are adopted by the workers and construction site contractors. Safety issues related to construction of the GSS at Mahuadanr may involve physical hazards like working at height, exposure to heat, particulate matter, noise and vibration, collision with vehicles/ moving equipment; exposure to electrical hazards; exposure to chemicals hazards (both inhalation and physical contact) like organic solvent vapours, reactive and toxic chemicals (acids, bases, insecticides, etc.). Such occupation hazards would vary with the nature of work undertaken by the workmen, as they may employed by different contractors responsible for doing a particular component of the work.

The construction work would involve several contractors who in turn would engage different labourers having varied skillsets. The duration and extent for most workmen is expected to extend for a few months and the occurrence of any accidents and consequent injuries/fatalities will lead to adverse impacts that could range from loss of productive time to loss of livelihoods (of workmen). If local workers are hired, they may not have appropriate training for adopting a safety culture expected at an industrial construction site – so receptor sensitivity may be anticipated to be high. There is also a possibility of legal non-compliance which may lead to temporary stoppage of work affecting construction schedules. Hence, the receptor sensitivity is high.

Overall, the impact significance for occupational health and safety can be considered to be *moderate*.

#### **6.1.11**      *Impact on Cultural Sensitivities*

Adjacent to the proposed land parcel for the Mahuadanr GSS site, on the southwestern corner, is a grave yard site which is used by the local Cristian community. Consultations with villagers indicated that the site is an important site, which is of cultural value to the local community. Necessary protection would be provided to the site by appropriately guarding it off from the GSS premises to ensure that it is not affected either during construction of operational phases of the project. The site does have an alternate access from that direction and the fencing off the site is not going to restrict access to villagers. The impact is expected to be **minor**.

## 7.1 INTRODUCTION

A stakeholder is defined as “an individual, group, or organization, who may affect, be affected by, or perceive itself to be affected by a decision, activity, or outcome of a project”. “Stakeholder Analysis” is the process of sorting identified stakeholder groups according to their impact on the project and the impact the project will have on them. This information is then used to assess the manner in which the interests of the stakeholders or projects impact on them should be addressed in the project development plan or its operation.

The importance of stakeholder analysis lies in the assessment and understanding of the socio-political environment surrounding the project. It allows for:

- Identification of the interests, concerns and societal risks surrounding the stakeholders, as well as conflicts of interests (if any);
- Identification of relations between stakeholders that may enable “coalitions” of project sponsorship, ownership and co-operation as well as the mechanisms which may influence other stakeholders;
- Key groups/ individuals to be identified who need to be informed about the project during the execution phase;
- Identifying stakeholders (those who might have an adverse impact on the project) and taking appropriate measures to mitigate their influence; and;
- Development of a framework for participatory planning and implementation of various project activities including interventions for community development.

The identification of stakeholders and their inclusion in the decision-making process is thus essential in the process of prioritizing, analyzing and addressing issues; and in creating management systems and strategies to address the concerns/ expectations of various stakeholders.

The following sub-sections provide a profile of the various stakeholders in the project as well as their concerns and relative influence with regards to the project.

## 7.2 IDENTIFICATION OF STAKEHOLDERS

The stakeholders who would directly impact or are directly impacted by the project are known as Primary Stakeholders, those who have an indirect impact or are indirectly impacted are known as Secondary Stakeholders. Keeping in mind the nature of the project and its setting, the stakeholders have been identified and listed in the table below;

**Table 7.1**      *List of key stakeholders*

Stakeholder Category/ Group	Key Stakeholders
<b>Primary Stakeholders</b>	
Local Community	• Local Community
Other Primary Stakeholders	• Jharkhand Urja Sancharan Nigam Limited • World Bank
<b>Secondary Stakeholder</b>	
Institutional Stakeholders	• District Administration • Forest Department • Tribal Development Department
Other Secondary Stakeholder	• Contractors

### *Consultations with Local Communities*

Community consultation was conducted in close vicinity of the project boundary to gather the opinion of the public on the proposed project and assess its potential effect on the public especially vulnerable groups. Consultations were carried out with community people residing in the adjacent to the proposed Substation site to assess the extent of impact on the common people.

**Figure 7.1**      *Consultations with Local Communities*



Consultation at site

The brief outcome of the consultations with the key stakeholder groups are listed below.

## **7.3**      *SUMMARY OF STAKEHOLDER CONSULTATIONS*

ERM undertook consultations/ meetings with identified stakeholders during the course of the site visit. The intensive deliberations provided a platform for two-way communication between the team of consultants and the stakeholder groups. This in turn helped in developing an understanding of the perceptions of stakeholders with regards to the project and also allowed for a means of



recording their feedback. The key points discussed with each of these stakeholders are provided in the table below:

**Table 7.2 Stakeholders and Key Points Discussed**

S. No.	Stakeholder Category	Key Points Discussed	Outcomes in brief
<b>Local Community</b>			
1.1	Local Community	<ul style="list-style-type: none"> <li>• Current engagement scenario -livelihood options;</li> <li>• Basic amenities in the village – electricity, drinking water, etc.;</li> <li>• Health scenario in the village and distances of Hospitals/ Clinics;</li> <li>• Perception of local community towards the project;</li> </ul>	<ul style="list-style-type: none"> <li>• Proposed GSS site is located within the Jhangsi village boundary</li> <li>• Tribal population is quite high in this area. Jhangsi village. However, reportedly, they have reportedly joined the mainstay population. Christian community is significant in this area.</li> <li>• Most of the people are dependent on agriculture to earn their livelihood.</li> <li>• Majority of the agriculture land is mono cropped and entirely dependent on monsoon.</li> <li>• Major crop of this area is paddy.</li> <li>• Majority of the people also go to the other district and neighbouring Chhattisgarh state to earn their livelihood both for permanent and temporary basis.</li> <li>• Primary school is present in the Jhangsi village and high school is present in Chainpur village and nearest collage is located in Latehar.</li> <li>• Healthcare infrastructure is poor in this area. Though, Primary Health Centre is present in the Jhangsi village, reportedly infrastructure available at this PHC is not sufficient to cater healthcare need on this area.</li> <li>• There is no water supply to the village</li> <li>• There is no means for public transportation in this area. To reach to nearby market at Mahuadanr, people in this area travel by their own vehicle (cycle, bicycle).</li> <li>• There is a graveyard used by the Christian Community of the Chainpur village in the South-Western corner beyond the premises of the site. Reportedly, local people did not have any reservation for the construction of the substation adjoining to this graveyard. However, people have requested not to disturb places adjoining to this graveyard in the form of storing construction material and dumping of construction waste.</li> <li>• Movement of wild animals viz. common leopard, striped hyaena, Indian wolf are not reported within the GSS site and immediate vicinity.</li> </ul>

### 8.1 *MITIGATION MEASURES & MANAGEMENT PLAN*

This document provides the Environmental and Social Management Plan (ESMP) for the planning, construction and operation of the Project which is described in Sections below. This ESMP provides an action plan against each of the mitigations measures identified for an impact identified in the earlier section. It also defines the actions to be taken to check and monitor compliance and effectiveness of the mitigation measures to which JUSNL is committed. In addition, this ESMP is used to ensure compliance with statutory requirements and World Bank safeguards policies.

The environmental and social mitigation measures and plans are presented in form of a matrix according to the sequential flow of activities in the project life cycle. The matrix focuses on strategies to be adopted for safe guard of the environment from possible impacts resulting out of the project activities. These measures would be further updated by Contractor during the implementation of the ESMP. The ESMP is provided in *Table 8.1*. To ensure that the conditions specified in the ESMP are adequately implemented by the Contractor General and Special Conditions of Contract has been developed. The General and Special Conditions of Contract are presented in *Annexure 2* and *Annexure 3* respectively.

**Table 8.1**      *Environment and Social Management Plan*

Sl. No.	Project Phase/Activity	Potential Impacts	Proposed Mitigation Measures	Responsibility
<b>Planning/Preconstruction</b>				
1	Substation location and design	Conflict with community	Careful design of site to avoid damages to the graveyard located just outside the northern boundary of proposed site	Design Consultant/ Contractor
2	Substation location and design	Impact on local wildlife	Site specific Wildlife Management Plan to be prepared and permission to be taken from NBWL	JUSNL/ Contractor
3	Design of residential quarter and office at substation	Water/soil pollution	Septic Tank with soak pit to be designed as per IS: 2470 (Part-1) - 1985 (Code of Practice for Installation of Septic Tank).	Design Consultant/ Contractor
<b>Construction</b>				
4	Site preparation and construction work	Loss of topsoil	<ul style="list-style-type: none"> <li>• Top soil from the construction site will be stripped before commencement of construction work;</li> <li>• Top soil will be stored in a dedicated top soil storage site, having adequate mitigation measures for preventing erosion due to runoff;</li> <li>• Activities will be scheduled (as far as possible) to avoid extreme weather events, such as heavy rainfall;</li> <li>• Top soil will be used for landscaping within the GSS site.</li> </ul>	Contractor
4.1		Noise and vibrations	All equipment/machineries to be regularly maintained to ensure efficient operation	Contractor
4.2			DG sets with acoustic enclosure should be used	Contractor
4.3			Construction work during night time (10 pm to 6 am) to be prohibited. In case of emergency work at night approval of JUSNL Division/ Circle is mandatory	Contractor
4.4		Air Pollution	Water sprinkling to be carried out twice a day during dry season on exposed surface area.	Contractor

Sl. No.	Project Phase/Activity	Potential Impacts	Proposed Mitigation Measures	Responsibility
4.5			Vehicles transporting loose construction/excavated materials shall be covered with tarpaulin sheets.	Contractor
4.6			Loose construction material/ excavated material shall be stored against any structure or would be kept covered with tarpaulin sheet at the construction site.	Contractor
4.7			All vehicles utilized in transportation of raw materials and personnel, will have valid Pollution under Control Certificate (PUCC)	Contractor
4.8			Regular maintenance of machines, equipment and vehicles that will be used for construction activities of substation/tower construction	Contractor
4.9		Water/Soil Pollution	Septic tanks and soak pits/modular bio-toilets would be provided at all construction site and labour camp	Contractor
4.10			<ul style="list-style-type: none"> <li>A peripheral site drainage channel would be constructed at the beginning of the construction work. The peripheral site drainage channel would be provided with a sedimentation tank to prevent sediments to be carried away by the runoff.</li> <li>Storm water drainage should not be discharged to into any agricultural field.</li> </ul>	Contractor
4.11		Depletion of water resource	Consumption of water would be reduced to the extent possible through the application of water conservation measures and through reuse/recycling of water, wherever possible.	Contractor
4.12		Alteration /diversion of natural drainage channel	Existing micro drainage channel passing through the GSS site would be redirected along the boundary of the GSS site to prevent any waterlogging within premises.	Contractor
4.13		Impact on Wildlife	<ul style="list-style-type: none"> <li>Construction should not be initiated before obtaining Wildlife Clearance from NBWL. The specific recommendations provided in the Wildlife Clearance from NBWL to be implemented during the construction phase</li> </ul>	JUSNL/Contractor

Sl. No.	Project Phase/Activity	Potential Impacts	Proposed Mitigation Measures	Responsibility
5	Community Health and Safety	Injury and sickness of local people	<ul style="list-style-type: none"> <li>• Site to be properly fenced before construction to prevent entry of stray animals;</li> <li>• Location of construction camps, labour camps, material sourcing areas would be limited within the fenced site boundary;</li> <li>• Wastes to be disposed within the GSS site</li> <li>• Any electrical cables should not be placed outside the site boundary</li> <li>• Sighting of wild animals to be reported to the local Forest Range Office</li> <li>• Coordination with local communities for construction schedules;</li> <li>• Access restriction for local people at the construction site.</li> <li>• Undertaking regular health check-ups of the work-force and reporting any major illnesses at the earliest to Block health officer for disease control and surveillance.</li> <li>• Creating mass and labour awareness on HIV and STDs;</li> </ul>	Contractor
5.1		Local Woman Community	<ul style="list-style-type: none"> <li>• Labour Camp should be located away from the village and it should be access control for the local people.</li> <li>• Awareness should be created among the migratory labour that they should not be entered in the village without prior information to the villagers.</li> <li>• Local resource like hand pump, bathing ghat should not be used by the labours.</li> </ul>	Contractor
6	Occupational health and safety	Injury and sickness of workers	<ul style="list-style-type: none"> <li>• Provide safety equipment's (PPEs) for construction workers;</li> <li>• Prevent entry of unauthorized person at construction site;</li> <li>• Provide training on health and safety to all the workers.</li> </ul>	Contractor

Sl. No.	Project Phase/Activity	Potential Impacts	Proposed Mitigation Measures	Responsibility
7	Blasting (in case of hard rock formation)	Noise and Vibration	Adopt appropriate engineering safeguards to meet the regulatory standard [DGMS Prescribed Permissible Limit of Ground Vibration (refer Annex 6)] for blasting operation.	Contractor
7.1		Damage to Structure	In case there are any damages to the structures due to blasting, the same will be assessed and would be repaired	Contractor
7.2		Occupational health and safety	<ul style="list-style-type: none"> <li>Implement mitigation measures to control fly rock;</li> <li>Secure and limit access to blasting areas to qualified personnel involved in, and necessary for, blasting operations;</li> <li>Arrange for adequate safety measures (as per Explosives Rules, 2008) for transport and storage of explosives;</li> <li>Provide protective equipment to all the personnel engaged in blasting activity.</li> </ul>	Contractor
8	Health, Hygiene, Safety and Security of Workers in Labour Camp	Labour camp related EHS and Hygiene Issues	<p>Facilities would be provided at the labour camp as per provisions of IFC Guidance Note on Worker's Accommodation 2009. Some of the relevant provisions to be complied are as follows:</p> <ol style="list-style-type: none"> <li>1. Worker's accommodation;</li> <li>2. Provision of safe drinking water;</li> <li>3. Appropriate arrangement for cooking;</li> <li>4. Management of waste water and solid waste from the camp site;</li> <li>5. Availability of medical facility (first aid)</li> <li>6. Security arrangement of the campsite.</li> <li>7. Arrangement to register and redress grievance of workers.</li> </ol> <p>Refer <b>Annexure 7</b> for detail guideline.</p>	Contractor
8.1		Conflict with local population due to disturbance on religious/cultural site	<ul style="list-style-type: none"> <li>Boundary wall or fencing should be constructed before commencement of construction work</li> <li>Labour camp should be located away from the grave yard</li> </ul>	Contractor

Sl. No.	Project Phase/Activity	Potential Impacts	Proposed Mitigation Measures	Responsibility
			<ul style="list-style-type: none"> <li>Any kind of waste should not be dumped on side of the grave yard</li> <li>Awareness camp for labour regarding the sensitivity of the grave yard site should be organized on regular interval</li> </ul>	
<b>Operation and Maintenance</b>				
9	Drainage of storm water	Water/Soil Pollution	<ul style="list-style-type: none"> <li>All internal drainage channels from the substation site would be connected to a peripheral site drainage channel.</li> <li>The peripheral site drainage channel would be provided with a sedimentation tank and oil-water separator to prevent sediments and oil &amp; grease to be carried away by the runoff.</li> <li>Storm water drainage should not be discharged to into any agricultural field.</li> </ul>	Contractor
10	Handling and disposal of waste	Water/Soil Pollution	The municipal solid waste would be composted in composting pits	JUSNL Subdivision Office
10.1			<ul style="list-style-type: none"> <li>Authorization for hazardous waste generation (used transformer oil) should be obtained from the Jharkhand State Pollution Control Board <sup>(1)</sup>;</li> <li>Hazardous waste need to be disposed through CPCB/PCB authorized recyclers;</li> <li>Annual return [Form 4 Hazardous and Other Wastes (Management and Transboundary Movement) Rules, 2016] to be submitted to JSPCB.</li> <li>Recommendations of NBWL provided in Wildlife Clearance for waste management (if any) to be followed</li> </ul>	JUSNL Subdivision Office
11	Storage and handling of SF6	Emission of most potent GHG causing climate change	<ul style="list-style-type: none"> <li>Procedure would be put in place for storage, handling and refilling of SF6 gas cylinders. Every refill would be documented and any unusual variation in gas volume would be</li> </ul>	JUSNL Subdivision Office

(1) As per recommendation made by the Jharkhand Pollution Control Board



Sl. No.	Project Phase/Activity	Potential Impacts	Proposed Mitigation Measures	Responsibility
			reported to JPSIP for review and rectification. Each and every leakage will be promptly detected, addressed and documented and reported to the JUSNL Management.	
12	Occupational health and safety of staff	Injury/ mortality to staff during O&M work	<ul style="list-style-type: none"> <li>Recommendations of NBWL provided in Wildlife Clearance for storage and handling of SF6 (if any) to be followed</li> </ul> <p>During the testing and charging of electrical lines and substation, electricity insulating protective equipment like footwear (ISO 20345: 2004 Part-2), rubber gloves (IS 4770: 1991) would be provided to workers. In addition, provisions of the "Central Electricity Authority (Measures Relating to Safety and Electric Supply) Regulations 2010" would be adhered to.</p>	JUSNL Subdivision Office
12.1			Induction training to all the new employee and six monthly refresher training for substation O&M staff would be organized.	JUSNL Subdivision Office
12.2		Injury/ mortality from emergency situation	Preparation of fire emergency action plan and training given to staff on implementing emergency action plan	JUSNL Subdivision Office
13	Community health and safety	Injury/ mortality to public	Integrity of compound wall would be maintained all time	JUSNL Subdivision Office
14	Impact on Wildlife	Injury/ mortality of wildlife	Specific recommendations provided in the Wildlife Clearance from NBWL to be implemented during the operation phase of the project.	JUSNL Subdivision Office

The monitoring indicators, frequency for measurement and the responsibility for monitoring for each of the mitigations proposed in the management plan are described alongside the mitigation measures proposed in *Table 8.2*. The monitoring of the EMP provisions would be carried out by the respective agencies at a frequency mentioned in the Environmental Management Plan.

For ensuring effective implementation and evaluation of the performance of the environmental mitigation measure a reporting mechanism has been drawn up and presented in *Section 5.3* of the Environmental and Social Management Framework. The reporting of the implementation of the ESMP for this project is presented *Annexure 4*.

**Table 8.2**      *Environment and Social Monitoring Plan*

Sl. No.	Project Phase /Activity	Potential Impacts	Parameter to be monitored/indicator	Monitoring frequency	Responsibility
<b>Planning/Preconstruction</b>					
1	Substation location and design	Conflict with community	Design consideration to avoid interference with grave yard located just outside the south western boundary of proposed site	Once- during the detailed design	JUSNL Subdivision/Division/Circle Office/ JPSIP PIU
2	Substation location and design	Impact to Wildlife	Wildlife Clearance to be obtained prior to commencement of site construction	Once- during the detailed design	JUSNL Subdivision/Division/Circle Office/ JPSIP PIU
3	Design of residential quarter and office at substation	Water/soil pollution	Provisioning of septic tank with soak pit in substation design	Once- during the detailed design	JUSNL Subdivision/Division/Circle Office/ JPSIP PIU
<b>Construction</b>					
4	Site preparation and construction work	Loss of topsoil	Practice adopted to store and reuse topsoil which is removed from the construction site	Every week	JUSNL Subdivision/Division/Circle Office/ JPSIP PIU
4.1		Noise and vibrations	Maintenance log book of vehicle/machinery , Number of equipment /vehicle undergoing regular maintenance	Every week	JUSNL Subdivision/Division/Circle Office/ JPSIP PIU
4.2			Presence of acoustic enclosure in DG set	Every week	JUSNL Subdivision/Division/Circle Office/ JPSIP PIU
4.3			How many night time approval was taken	Every week	JUSNL Subdivision/Division/Circle Office/ JPSIP PIU
4.4		Air Pollution	Water sprinkling at dust generating area	Every week	JUSNL Subdivision/Division/Circle Office/ JPSIP PIU
4.5			Tarpaulin cover on vehicle carrying loose construction/excavated materials	Every week	JUSNL Subdivision/Division/Circle Office/ JPSIP PIU
4.6			Tarpaulin cover on loose construction/ excavated materials	Every week	JUSNL Subdivision/Division/Circle Office/ JPSIP PIU
4.7			Number of vehicle not having valid PUCC certificate	Every Month	JUSNL Subdivision/Division/Circle Office/ JPSIP PIU

Sl. No.	Project Phase /Activity	Potential Impacts	Parameter to be monitored/indicator	Monitoring frequency	Responsibility
4.8			Maintenance log book of vehicle/ machinery, Number of equipment /vehicle undergoing regular maintenance.	Every Month	JUSNL Subdivision/Division/Circle Office/ JPSIP PIU
4.9		Water/Soil Pollution	Availability of Septic tanks and soak pits/modular bio-toilets	Every Month	JUSNL Subdivision/Division/Circle Office/ JPSIP PIU
4.10			Availability of peripheral site drainage channel, sedimentation tank	Every Month	JUSNL Subdivision/Division/Circle Office/ JPSIP PIU
4.11		Depletion of water resource	Water conservation measures adopted at construction and labour camp	Every Month	JUSNL Subdivision/Division/Circle Office/ JPSIP PIU
4.12		Alteration /diversion of natural drainage channel	Diversion of natural drainage channel passing through the GSS Site	Every Month	JUSNL Subdivision/Division/Circle Office/ JPSIP PIU
4.13		Impact on Wildlife	Specific recommendations provided in the Wildlife Clearance from NBWL to be implemented during the construction phase Breach in the site fencing Waste disposal outside site boundary Any electrical cables outside the site boundary Sighting of wild animals	Every Month	JUSNL Subdivision/Division/Circle Office/ JPSIP PIU
5	Community Health and Safety	Injury and sickness of local people	Number of accidents of local people (if any) at construction site, number of grievance recorded Review of document related to regular health check-up of the work force  Review of document related to awareness camp organised periodically	Every Month	JUSNL Subdivision/Division/Circle Office/ JPSIP PIU

Sl. No.	Project Phase /Activity	Potential Impacts	Parameter to be monitored/indicator	Monitoring frequency	Responsibility
5.1		Local Woman Community	Physical observation of the labour camp before commencement of construction and during construction period.	Every Month	JUSNL Subdivision/Division/Circle Office/ JPSIP PIU
6	Occupational health and safety	Injury and sickness of workers	Awareness of workers, use of PPE by workers	Every 15 days	JUSNL Subdivision/Division/Circle Office/ JPSIP PIU
7	Blasting (in case of hard rock formation)	Noise and Vibration	Measures adopted to control noise and vibration at blasting site	Every 15 days	JUSNL Subdivision/Division/Circle Office/ JPSIP PIU
7.1		Damage to Structure	Record of any damaged and repaired structure	Every one month	JUSNL Subdivision/Division/Circle Office/ JPSIP PIU
7.2		Occupational health and safety	Measures adopted to control fly rock, safety measures adopted for transport and storage of explosives, use of protective equipment, measures adopted for access restriction at blasting site	Weekly during blasting work	JUSNL Subdivision/Division/Circle Office/ JPSIP PIU
8	Health, Hygiene, Safety and Security of Workers in Labour Camp	Labour camp related EHS and Hygiene Issues	Condition of labour camp, awareness of workers, complainant register	Every 15 days	JUSNL Subdivision/Division/Circle Office/ JPSIP PIU
8.1		Conflict with local population due to disturbance on religious/cultural site	Any registered community grievance regarding the disturbance of grave yard site	Every Month	JUSNL Subdivision/Division/Circle Office/ JPSIP PIU
<b>Operation and Maintenance</b>					
9	Drainage of storm water	Water/Soil Pollution	Availability of internal and peripheral site drainage channel, sedimentation tank and oil-water separator at outfall of peripheral site drainage channel	Every Month	JUSNL Subdivision/Division/Circle Office/ JPSIP PIU
10	Handling and disposal of waste	Water/Soil Pollution	Municipal disposal arrangement for GSS, Availability of composting pit		JUSNL Division/Circle/ JPSIP PIU
10.1			Availability of authorization letter, Annual return (Form 4)	Annually	JUSNL Division/Circle/ JPSIP PIU

Sl. No.	Project Phase /Activity	Potential Impacts	Parameter to be monitored/indicator	Monitoring frequency	Responsibility
11	Storage and handling of SF6	Emission of most potent GHG causing climate change	Leakage and gas density /level	Monthly	JUSNL Division/Circle/ JPSIP PIU
12	Occupational health and safety of staff	Injury/ mortality to staff during O&M work	Accident-Incident register	Monthly	JUSNL Division/Circle/ Head Office
12.1			Document pertaining to training/awareness programs and mock drills/awareness level of staff engaged in O&M work of substation	Monthly	JUSNL Division/Circle/ JPSIP PIU
12.2		Injury/ mortality from emergency situation	Accident-Incident list	Monthly	JUSNL Division/Circle Office/ JUSNL PIU
13	Community health and safety	Injury/ mortality to public	Accident-Incident list	Monthly	JUSNL Division/Circle/ Head Office
14	Impact on Wildlife	Injury/ mortality of wildlife	Compliance report on implementation of NBWL recommendation	Every Month	JUSNL Subdivision/Division/Circle Office/ JPSIP PIU

For the implementation of the Jharkhand Power System Improvement Project JUSNL has developed a Project Implementation Unit (JPSIP PIU). The JPSIP PIU is located at the JUSNL headquarters in Ranchi and is headed by the Chief Engineer (Transmission O&M) i.e. the Project Director (PD). Presently it includes four other members. The JPSIP PIU would also be responsible for driving the implementation of the E&S safeguards in JPSIP.

At the field level the Divisional/ Circle offices of JUSNL, who would be responsible for implementing the technical aspects of the JPSIP; he would also be responsible for the implementation of the E&S safeguards. The Junior Engineer of the respective division of JUSNL responsible for overseeing the project would also be responsible for overseeing that the provisions of the ESMP is being implemented by the Contractor. The Chief Engineer cum GM of the Daltonganj Zone however has the ultimate responsibility of ensuring that the project is implemented successfully and also ensuring the project's desired environmental and social outcomes are attained. In addition, the Environmental Officer and the Social Officer at the Project Implementation Unit of JPSIP would also undertake periodic site visits to oversee the operations and suggest corrective actions in case it is warranted.

In addition, the Contractor implementing the subprojects would also have an Environment and Social personnel to actually carry out the E&S safeguards on the ground.

## 8.4

## COMMUNICATION PLAN

Through the process of consultation and disclosures, JPSIP would ensure that the project information are communicated to the stakeholder and the feedback from the community is integrated into the execution of the project.

A Consultation Framework has been prepared to ensure involvement of stakeholders' at each stage of project planning and implementation. To ensure community participation at different stages of the project the Consultation framework for JPSIP has been proposed in *Table 8.3*.

**Table 8.3** *Summary of Consultation Framework*

Project Phase	Activity	Details	Responsible Agency	Target Stakeholders
Planning	Securing of Land for substation Site	Identification of sensitivities around the site and common property which might get affected	Contractor along with the JUSNL Circle/Divisional	Community People especially the land owners adjacent to the site, Revenue Officer , Village Panchayat



Project Phase	Activity	Details	Responsible Agency	Target Stakeholders
Construction	Commencement of Construction	Communicate about the activity and period of activity.	Contractor along with the JUSNL Circle/Divisional	Community People especially the land owners adjacent to the site, Village Panchayat
Operation	Commencement of operation	Communicate about the date of start of operation and charging of substation and associated transmission line	JUSNL Circle/Divisional	Community People especially the located adjacent to the site and transmission line, Village Panchayat

## 8.5

### GRIEVANCE MECHANISM

A three tier Grievance Mechanism as would be used for handling any grievances of community related to the project. The Three Tier grievances redressal process is presented in **Box 8.1**.

#### Box 8.1

#### *Three tier Grievance Redress Mechanism of JPSIP*

**Tier1: Circle Level:** The aggrieved stakeholder can file a complaint with the respective Junior Engineer in charge of the site or at the Divisional/Sub-Divisional Offices of JUSNL. The complaints would be attended to by the Electrical Superintending Engineer of the Daltonganj Division and all the Executive Engineers and Assistant Engineers in the Daltonganj circle within 21 days of the filing of Complaint. In case the aggrieved is not satisfied with the solution provided Tier 1 he may escalate it to Tier 2: Zone Level.

**Tier 2: Zone Level:** The Chief Engineer cum GM of Daltonganj Zone and all the Superintending Engineers of the Daltonganj Zone would be the members of Tier 2 level. They would hear the aggrieved and also review the proceedings of the Daltonganj Division and provide relief to the aggrieved. The entire process would be completed within 45 days of the complaint being referred to Tier II. Unsatisfied with the solution the Complainant can approach the Tier III: GRC Level.

**Tier 3: Grievance Redresses Cell (GRC):** The GRC for JPSIP would be housed at the JPSIP-PIU. The cell would be headed by the Managing Director, JUSNL or his representative not below the rank of Director (Projects). It would have the Director Projects, JUSNL Chief Engineer (Transmission (O&M), Superintendent Engineer, JPSIP-PIU, Executive Engineer (JPSIP-PIU) as members. The Chief Engineer of Daltonganj Zone would be an invited member. Hearing the complaint the GRC would provide its decision. The process at the GRC would be completed with 60 days of the complaint being registered in Tier 3.

**Court of Law:** If the grievance/ complaint is not resolved at GRC Level or the complainant is not satisfied with the solution provided by GRC, the person may approach the Court of Law.

#### **Mechanism for Registering and Communicating grievances**

The Junior Engineer responsible for overseeing the activities of the project would be the first point of contact for registering the grievance. He shall be responsible for registering all grievances in the Grievance Form. The

Grievance Form (*Annexure 5*) would be placed at the Office of the Junior Engineer of the respective sub-division and would also be available with the Supervisor of the Contractor. The contact number of the Junior Engineer shall also be displayed prominently at the site of the construction activity. The aggrieved person can either fill the Grievance Redress form and submit it at the nearest sub-division office of JUSNL or call up the Junior Engineer and register the grievance. The Junior Engineer in the latter case complete the grievances Redress Form and pass it to the Tier 1 for redressal. The outcome of the grievances redressal process shall be sent to the person registering the grievance by Registered Post.

It is understood from the ESIA study that the Project activities related to the development of the substation may create some impacts on topography and drainage, community health and safety during the construction phase. However all these impacts are temporary and can be mitigated with proper mitigation measures. However the development of the 132/33 KV substation would improve the availability of quality power in the region.

The Environmental and Social Management Plan (ESMP) describes mitigation measures for impacts specific to the Project activities and also discusses implementation mechanisms. The implementation of the mitigation measures suggested can help in managing the negative impacts on air quality, ground water etc. whereas the economic opportunities in terms of local employment are assessed as positive. The construction activities will not be initiated without Wild Life Clearance from NBWL. Specific mitigation measures provided by NBWL will be followed.

To conclude, implementation of ESMP will help the Project to comply with national/state regulatory framework as well as to meet World Bank's requirement of the environmental and social performance. In case the site is located within Mahuadanr Wildlife Sanctuary or any other notified/designated Eco sensitive zone further assessment to determine specific impacts on ecosystem and biodiversity would be conducted.

## Annexure 1

# List of Sub Projects in JPSIP

## PHASE-I (10)

Sl. No	Name of GSS / Transmission Line	Capacity	Length of TL
<b>Scheme - D</b>			
1	132/33 Kv GSS Irba (2x50 MVA)	100 MVA	
2	132 KV D/C 3 ph Irba- Kanke Transmission Line		23.598 km
3	132 kV D/C 3 Ph. Irba - Ratu Transmission line		42.678 km
<b>Scheme - E</b>			
1	132/33 kV GSS at Shikaripara (2x50 MVA)	100	
2	132 kV D/C 3 Ph. Dumka - Shikaripara Transmission line		51.30 km
<b>Scheme - H</b>			
1	132/33 kV GSS at Silli (2x50 MVA)	100	
2	132 kV D/C 3 Ph. Silli - Chouka Transmission line		52.185 km
<b>Scheme - O</b>			
1	132/33 kV GSS at Mahuadanr (2x50 MVA)	100	
2	132 kV D/C 3 Ph. Latehar- Mahuadanr Transmission line		86.72 km
<b>Scheme - P</b>			
1	132/33 kV GSS at Angada (2x50 MVA)	100	
2	132 kV D/C 3 Ph. Silli - Angada Transmission line		39.048 km
3	132 kV D/C 3 Ph. Angada - Irba Transmission line		34.529 km
<b>Scheme - S</b>			
1	132/33 kV GSS at Jarmundi (2x50 MVA)	100	
2	LILO of 132 kV D/C 3 Ph. Dumka-Deoghar Transmission line at GSS Jarmundi		3.69 km
<b>Scheme - X</b>			
1	132/33 kV GSS at Chakuliya (2x50 MVA)	100	
2	LILO of both 132kV Bahragora - Dhalbhumgarh Transmission line at GSS Chakuliya		21.64 km
<b>Scheme - Q</b>			
1	132/33 kV GSS at Hansdiha (2x50 MVA)	100	
2	LILO of 132 kV Lalmatia - Dumka Transmission line at GSS Hansdiha		3.36 km
3	132 kV D/C Hansdiha - Jasidih Transmission line		43 km
<b>Scheme - T</b>			
1	132/33 kV GSS at Amarapara (2x50 MVA)	100	
2	132 kV D/C 3 Ph. Amarapara - Godda Transmission line		67.45 km
3	132 kV D/C 3 Ph. Amarapara - Pakur Trans. line		24.75 km

## PHASE-II (7)

Sl. No	Name of GSS / Transmission Line	Capacity	Length of TL
<b>Scheme-A</b>			
1	132/33 kV GSS at Chainpur (2x50 MVA)	100	
2	132 kV D/C 3 Ph. Chainpur - Mahuandanr Tran. line		53.63 km
3	LILO of 132 kV Gumla - Simdega Transmission line at GSS Chainpur		10 km
<b>Scheme - G</b>			
1	132/33 KV GSS Sundarnagar (2x50 MVA)	100	
2	LILO of 132 kV Ramchandrapur - Jadugoda Old Transmission line at GSS Sundarnagar		17.50 km
<b>Scheme - K</b>			
1	132/33 kV GSS at Ramkanda (2 x 50 MVA)	100	
2	32 kV D/C 3 Ph. Ramkanda - Garhwa (220KV GSS) Transmission line		60 km
<b>Scheme - N</b>			
1	132/33 kV GSS at Chhatarpur (2x50 MVA)	100	
2	132 kV D/C 3 Ph. Chhatarpur - Daltonganj (220 kV GSS) Transmission line		41.53 km
3	132 kV D/C 3 Ph. Chhatarpur - Japla Transmission line		29.09 km
<b>Scheme - W</b>			
1	132/33 kV GSS at Kalebira (2x50 MVA)	100	
2	132 kV D/C 3 Ph. Kalebira-Kamdara Transmission line		38.63 km
3	132 kV D/C 3 Ph. Kalebira - Simdega Transmission line		16.44 km
<b>Scheme - AA</b>			
1	132/33 kV GSS at Chouka(2x50 MVA)	100	
2	132 kV D/C 3 Ph. Chouka - Tamar Transmission line		27.60 km
<b>Scheme - R</b>			
1	LILO of one Ckt of 132 KV D/C 3 ph Chaibasa-Manoharpur Transmission Line at 132/33 KV GS/S at Goelkera including with 2 nos. of 132 kV bay		14 km

## PHASE-III (10)

Sl. No	Name of GSS / Transmission Line	Capacity	Length of TL
<b>Scheme - F</b>			
1	132/33 kV GSS at Meral ( 2 x 50 MVA)	100	
<b>Scheme - I</b>			
1	132/33 kV GSS at Panki (2x50 MVA)	100	
2	132 kV D/C 3 Ph. Chhatarpur - Panki Transmission line		50 km
<b>Scheme - J</b>			
1	132/33 kV GSS at Nagar Untari (2 x 50 MVA)	100	
2	132 kV D/C 3 Ph. Nagar Untari - Garhwa Trans. line		15.85 km
<b>Scheme - V</b>			
1	132/33 kV GSS at Kandra (2x50 MVA)	100	
2	LILO of 132 kV D/C 3 Ph. Chandil - Rajkharsawan Transmission line at Kandra		10 km
<b>Scheme - Y</b>			
1	132/33 kV GSS at Kurdeg (2x50 MVA)	100	
2	132 kV D/C 3 Ph. Kurdeg - 220/132 kV Simdega GSS Transmission line		45 km
<b>Scheme - Z</b>			
1	132 kV GSS at Chandwa (2x50 MVA)	100	
2	132 kV D/C Chandwa - Latehar Transmission Line		30 km
<b>Additional Scheme-1</b>			
1	132/33kV GSS at Sarath (2 x 50 MVA)	100	
2	132k DC Sarath - Palojori TL		20.10 km
4	132k DC Sarath - Chitra TL		15.14 km
<b>Additional Scheme-2</b>			
1	132/33kV GSS at Surda (2 x 50 MVA)	100	
2	132 kV D/C Surda - Jadugoda Transmission line		20.81 km
3	132 kV D/C Surda - Musabani (DVC) Transmission line		4.6 km
4	132 kV D/C Surda - Bharagora Transmission line		43.04 km
<b>Additional Scheme-3</b>			
1	132/33kV GSS at Naudiha (Palamu) (2 50 MVA)	100	
3	132k DC Naudiha - Chhatarpur TL		18.49 km
<b>Additional Scheme-4</b>			
1	132/33kV GSS at Narayanpur (Devipur) (2 x 50 MVA)	100	
2	LILO of 132kV DC Jamtara - Madhupur TL at Narayanpur (Devipur)		27 km



## Annexure 2

# General Conditions of Contract

## 1.1 GENERAL EHS CONDITIONS

- GCC 1.1
- i. The contractor shall take all necessary measures and precautions, otherwise ensure that the execution of the works and all associated operations on-site or of-site are carried out in conformity with statutory and regulatory environmental health safety requirements including those prescribed elsewhere in the Environmental and Social Management Framework and the Environmental and Social Management Plans attached to the report
  - ii. The Contractor shall ensure that the construction site will be secured by means of fencing to prevent unauthorized entry into the site. The Contractor shall also ensure that the access to the construction site is restricted to public at all times.
  - iii. The Contractor shall take all the measures and precautions to avoid any nuisance or disturbance arising from execution of the work. This shall, wherever possible, be achieved by suppression of the nuisance at source rather than abatement of the nuisance once generated. The provisions of the Environmental, Social Health Safety Management Plan would be implemented for the suppression of nuisance, but it shall not be limited to these provisions of the ESMP. The provisions of this sub-clause shall however, be disregarded in respect of emergency work required for saving life or the safety of the works.
  - iv. In event of any spoil or debris or silt from the sites being deposited on adjacent land, the Contractor shall immediately remove such spoils, debris or silt and restore the affected area to its original state to the satisfaction of the JUSNL. No debris should be dumped on the community land like Gochars, thans etc. In case the extra excavated earth is placed for levelling the playground the same should be done with the written consent of the community. Such materials should be spread in such a manner as to limit subsequent erosion and shall be re-vegetated as existing ground cover dictates. JUSNL should be absolved of any liabilities arising such works which are undertaken
  - v. Surplus excavated material from the tower footing shall be carried out to the substation for the purpose of filing in case the tower is located within 15 kms of the substation area. The cost of hauling the material shall be considered within the cost for the earthwork for the substation. Additional borrow pits shall only be allowed by the Junior Engineer, only after the excavated material has been exhausted. In case this is not feasible the contractor shall remove the excess excavated material from the area of the construction of tower footing before the completion of the tower erection. All other provisions specified in the EMP shall be implemented.
  - vi. The Contractor should contain requisite quantity and type of spill kits to control the spills of fuel and other oils e.g. transformer oil to prevent the pollutant from spreading either outside the area of the spill or into the ground.
- GCC 1.2
- a) All fuel and chemical storage shall be sited on an impervious base within an embanked area and secured by fencing. The storage area shall be located away from any watercourse or wetland. The base and walls of the embankment shall be impermeable and of sufficient capacity to contain 110% of the volume of tanks/ containers taken together.

In case of filling/ refuelling of fuel or oil, filling and refuelling shall be

strictly controlled and subjected to formal procedures. The contents of any tank or drum shall be clearly marked. Measures shall be taken to ensure that no contamination happens or discharges enter any drain or watercourses. All discharge from the Oil storage areas shall be passed through a Oil Water Separator (OWS) before it being discharged outside.

b) All internal drainage channels from the site would be connected to a peripheral site drainage channel. The peripheral site drainage channel would be provided with a sedimentation tank and oil-water separator to prevent sediments and oil & grease to be carried away by the runoff.

GCC 1.3

(i) All water and liquid waste products arising on the sites shall be collected and disposed off at location onsite or offsite and in a manner that shall not cause nuisance or pollution.

(ii) The Contractor shall not discharge or deposit any matter arising from the execution of the works into any place except at the designated places without the permission of the Environmental and Social Officer and the regulatory authorities concerned.

GCC 1.4

(i) The Contractor shall carry out dust suppression by sprinkling of water or methods of working to minimise dust, gaseous or other air born emissions and carry out the works in such a manner as to minimise adverse impacts on air quality. Sprinkling of water shall be carried out twice a day on exposed surface area during dry season.

(ii) Stockpiles of materials should be sited in sheltered areas or within hoarding, away from sensitive areas. Stockpiles of friable materials shall be covered with clean tarpaulins with application of sprayed water during dry and windy weather. Stockpiles of debris shall be dampened prior to their movement, except where this is contrary to the specifications.

(iii) Any vehicle with an open load carrying area used for transport of potentially dust producing materials shall have properly fitting side and tailboards. Materials having potential to produce dust shall not be loaded to a level higher than the side and tail boards and shall be covered with clean tarpaulin in good condition. The tarpaulin should be properly secured and extended to at least 300 mm over the edges of the sideboard and tailboard.

(iv) During high wind, no dust generating operations shall be permitted within 200m of residential areas having regard to the prevailing direction of the wind.

(v) Construction vehicles and machinery shall be kept in good working order and engines turned off when not in use. Appropriate measures shall be taken to limit exhaust emissions from construction vehicles, machinery and plant and the contractor shall include details of such proposed measures in the mitigation and monitoring plan to be submitted to the Employer or his representative.

(vi) All vehicle employed in the project shall have valid Pollution under Control (PUC) Certificate. The Contractor should maintain PUC Certificate log book on a regular basis and shall provide it to the Employer or his representation for inspection when asked for.

- GCC 1.5 (i) The Contractor shall consider noise as an environmental concern in his planning and during execution of the works.
- (ii) The Contractor shall use plant and equipment conforming to National and International standards and directives on noise, vibrations and emissions.
- (iii) The Contractor shall take all necessary measures to ensure that operation of all mechanical equipment and construction processes on and off the site shall not cause any unnecessary or excessive noise, taking into account all applicable environmental requirements. The Contractor shall use all necessary measures and shall maintain all plant and silencing equipment in good condition so as to minimise the noise emissions during construction works.
- (iv) The operations of the Contractor which is likely to generate noise shall be restricted during the night time (22.00 hrs to 6.00 hrs) especially if it is near residential areas.
- GCC 1.6 (i) The Contractor shall take all necessary measures to protect any archaeological finds or antiquities as required.
- (ii) Where antiquities are shown on the drawing or otherwise identified during the course of the works, these shall be protected by means of suitable fencing and barriers to the satisfaction of the EHS Engineer of JUSNL. The Contractor shall abide by the provisions of the Indian Treasure Trove Act, 1878, Jharkhand Ancient Monuments and Archaeological Sites, Remains and Art Treasures Act, 2016.
- GCC 1.7 On completion of the works, the Contractor shall reinstate all areas with natural vegetation to the satisfaction of the Environmental Officer of JPSIP PIU. Where directed by the Environment Officer the Contractor shall improve and reinstate the land on which informal roadside service area have been established by removing all debris and contaminated soils, re-grading to natural ground levels and re-establishing the natural vegetation where appropriate. All debris and contaminated materials shall be disposed off site as approved by the Environment Officer at the PIU.
- GCC 1.8 The Contractor shall ensure that the labour accommodation within the site /fly camp/ laydown area is provided with toilets/modular bio-toilets, septic tank and soak pits. The municipal solid waste generated shall be composted in pits located within the site.
- GCC 1.9 The Contractor shall adopt all possible means to ensure that groundwater usage is minimised during the construction activities. The bore well/s used for extraction of water for construction purpose shall be provided with water metres to monitor the ground water abstraction. The Contractor should maintain a daily water abstraction log book of water extracted from the bore well. Daily water abstraction log book should be produced to the employer or his representative on demand.

## 1.2 COMPLIANCE WITH LABOUR REGULATIONS

- GCC 2.1 During continuance of the contract, the Contractor and his sub-contractors shall abide at all times by all applicable existing labour enactments and rules made thereunder, regulations notifications and byelaws of the State or Central Government or local authority and any other labour law (including rules), regulations byelaws that may be passed or notification that may be issued under any labour law in future either by the State or the Central Government or the local authority. The employees of the Contractor and the Sub-contractor in no case shall be treated as the employees of the Employer at any point of time.
- GCC 2.2 The Contractor shall keep JUSNL indemnified in case any action is taken against the Employer by the competent authority on account of contravention of any of the provisions of any Act or rules made thereunder, regulations or notifications including amendments.
- GCC 2.3 If the Employer is caused to pay under any law as principal employer such amounts as may be necessary to cause or observe, or for non-observance of the provisions stipulated in the notifications / byelaws/ Acts / Rules/regulations including amendments, if any, on the part of the Contractor, the Employer shall have the right to deduct any money due to the Contractor under this contract or any other contract with the employer including his amount of performance security for adjusting the aforesaid payment. The Employer shall also have right to recover from the Contractor any sum required or estimated to be required for making good the loss or damage suffered by the Employer.
- GCC 2.4 The contractor shall abide by the provision of the following acts:
- a) Workmen Compensation Act 1923
  - b) Payment of Gratuity Act 1972
  - c) Employee P.F. and Miscellaneous Provision Act 1952
  - d) Maternity Benefit Act 1951:
  - e) Contract Labour (Regulation & Abolition) Act 1070
  - f) Minimum Wages Act 1948
  - g) Payment of Wages Act 1936
  - h) Equal Remuneration Art 1970
  - i) Payment of Bonus Act 1965
  - j) Industrial Dispute Act 1947
  - k) Industrial Employment (Standing Orders) Act 1946
  - l) Trade Unions Act 1926
  - m) Child Labour (Prohibition & Regulation) Act 1986
  - n) Inter-State Migrant workmen's (Regulation of Employment & Conditions of Service Act 1979
  - o) The Building and Other Construction workers (Regulation of Employment and Conditions of Service) Act 1996 and the Cess Act of 1996
  - p) Factories Act 1948
- GCC 2.5. During continuance of the contract, the Contractor and his sub-contractors shall abide at all times by all applicable existing World Bank Group labour requirements (refer **Annex11** Management of Labour Influx of the Environmental and Social Management Framework)

## COMPLIANCE TO ENVIRONMENTAL & SOCIAL REGULATIONS

GCC 3.1 If the employer is caused to pay under any law as proponent such amounts as may be necessary to cause or observe, or for non-compliance of the provisions or negligence of the Contractor for any provision stipulated in the notifications / byelaws/ Acts / Rules/regulations including amendments and Orders of the Hon'ble National Green Tribunal/ Hon'ble Court of Law, if any, on the part of the Contractor, the Employer shall have the right to deduct any money due to the Contractor under this contract or any other contract with the employer including his amount of performance security for adjusting the aforesaid payment.

The Contractor shall ensure to adhere provisions of the following acts;

- a) The Water (Prevention and Control of Pollution) Act, 1974
- b) The Air (Prevention and Control of Pollution) Act, 1981
- c) The Environment (Protection) Act 1986
- d) The Public Liability Insurance Act, 1991
- e) Wild Life Protection Act, 1972, as amended
- f) Forest Conservation Act, 1980 & Forest Conservation Rules, 2003 (as amended) & corresponding orders and judgements
- g) Jharkhand Biological Diversity Rules 2007
- h) Ancient Monuments & Archaeological Sites and Remains Act, 1958
- i) Indian Treasure Trove Act, 1878
- j) Jharkhand Ancient Monuments and Archaeological Sites, Remains and Art Treasures Act, 2016
- k) Jharkhand Timber and Other Forest Produce (Transit and Regulation) Rules, 2004
- l) Ozone Depleting Substances (Regulation and Control) Rules, 2000
- m) Chota- Nagpur Tenancy Act, 1908
- n) Santal Pargana Tenancy Act, 1949
- o) Hazardous and Other Wastes (Management and Transboundary Movement) Rules, 2016
- p) E-Waste (Management) Rules, 2016
- q) Battery (Management & Handling) Rules 2001
- r) Ozone Depleting Substances (Regulation and Control) Rules, 2000
- s) Central Ground Water Authority (CGWA) Public Notice dated 4th January 2017
- t) Regulation of Polychlorinated Biphenyls Order, 2016
- u) Wildlife Protection Act, 1972

GCC 3.2 (i) If the Employer is caused to pay under any law as principal employer such amounts as may be necessary to cause or observe, or for non-observance of the provisions stipulated in the notifications / byelaws/ Acts / Rules/regulations including amendments, if any, on the part of the Contractor, the Employer shall have the right to deduct any money due to the Contractor under this contract or any other contract with the employer including his amount of performance security for adjusting the aforesaid payment. The Employer shall also have right to recover from the Contractor any sum required or estimated to be required for making good the loss or damage suffered by the Employer.

(ii) The Contractor shall (a) abide by the Environmental Management Plan (b) carry out all the monitoring and mitigation measures set forth in the

environmental management plan and (c) allocate the budget required to ensure that such measures are carried out. The Contractor shall submit to the Employer Monthly Reports on the carrying out of such measures.

(iii) The Contractor shall adequately record the conditions of roads, agricultural land and other infrastructure prior to transport of material and construction commencement before start of the construction activity. In case of deterioration during the construction activity the Contractor shall fully reinstate pathways, other local infrastructure and agricultural land to at-least their pre-project condition upon construction completion. In case of any grievance of the community regarding damage to any common property e.g. roads/ walkways/ pathways, bridges, wells or any place of worship due to any construction activity; it shall be the responsibility of the Contractor to reinstate the same to its original condition (before the start of construction) unless other he can prove that the same was not constructed due to his activities.

(iv) The Contractor shall undertake detailed survey of the affected persons during transmission line alignment finalization under the Project, where applicable. The Contractor shall provide the information to the employer for records and use wherever required. Any compensation due to the damage of property shall be commensurate to the provisions in the entitlement matrix.

(v) The Contractor shall include a Social Officer in his team. The Social Officer shall explain to the land owners the process of the procurement of land through a negotiated settlement process.

(vi) The Contractor shall conduct health and safety programme for workers employed under the Contract and shall include information on the risk of sexually transmitted diseases, including HIV/ AIDS in such programs.

- GCC 3.3 The procurement or deployment of any machinery by the Contractor for the project should be in accordance to the environmental rules and regulations in place at the time of implementation. All DG sets should conform to the CPCB standards for noise and emission mentioned under the Environment (Protection) Act, 1986.
- GCC 3.4 The Contractor shall procure transformer oil in conformance to the Regulation of Polychlorinated Biphenyls Order, 2016.
- GCC 3.5 The Contractor shall procure CFC free equipment in conformance to the Government of India Guidelines

- GCC4.1 The Contractor shall observe all applicable regulations regarding safety on the Site.  
Unless otherwise agreed, the Contractor shall, from the commencement of work on Site until handing over, provide:
- a) fencing, lighting, guarding, putting up reflective strips and watching of the Works wherever required, and
  - b) temporary roadways, footways, guards and fences which may be necessary for the accommodation and protection of Employer / his representatives and occupiers of adjacent property, the public and others.
- GCC 4.2 The Contractor shall ensure proper safety of all the workmen, materials, plant and equipment belonging to him or to the employer or to others, working at the Site. The Contractor shall also be responsible for provision of all safety notices and safety equipment required both by the relevant legislations or as may be directed by the Engineer of JUSNL or as he may deem necessary.
- GCC 4.3 The Contractor will notify well in advance to the JUSNL Division / JPSIP PIU of his intention to bring to the site any container filled with liquid or gaseous fuel or explosive or petroleum substance or such chemicals which may involve hazards. The JUSNL Division / JPSIP PIU shall have the right to prescribe the conditions, under which such container is to be stored, handled and used during the performance of the works and the Contractor shall strictly adhere to and comply with such instructions. The JUSNL Division / JPSIP PIU shall have the right at his sole discretion to inspect any such container or such construction plant/equipment for which material in the container is required to be used and if in his opinion, its use is not safe, he may forbid its use. No claim due to such prohibition shall be entertained by JUSNL. JUSNL shall not entertain any claim of the Contractor towards additional safety provisions/conditions to be provided for/constructed as per the JUSNL Division /JUSNL PIU Instructions. Further, any such decision of the JUSNL Division /JUSNL PIU shall not, in any way, absolve the Contractor of his responsibilities and in case use of such a container or entry thereof into the Site area is forbidden by the JUSNL Division /JUSNL PIU, the Contractor shall use alternative methods with the approval of the JUSNL Division /JUSNL PIU without any cost implication to the Employer or extension of work schedule.
- GCC 4.4 All equipment used in construction and erection by Contractor shall meet Indian/International Standards and where such standards do not exist, the Contractor shall ensure these to be absolutely safe. All equipment shall be strictly operated and maintained by the Contractor in accordance with manufacturer's Operation Manual.
- GCC 4.5 Periodical examinations and all tests for all lifting/hoisting equipment & tackles shall be carried-out. In accordance with the relevant provisions of Factories Act 1948, Indian Electricity Act 1910 and associated Laws/Rules in force from time to time. A register of such examinations and tests shall be properly maintained by the Contractor and will be promptly produced as and when desired by the JUSNL Division /JUSNL PIU or by the person authorised by him.



- GCC 4.6 The Contractor shall provide suitable personal safety equipment of prescribed standard to all employees and workmen according to the Job Safety Analysis carried out by the Contractor, or as may be directed by the Employer. The Employer or his representative will also have right to examine these safety equipment to determine their suitability, reliability, acceptability and adaptability. The Contractor shall arrange biannual safety training for all workers.
- GCC 4.7 The Contractor shall provide safe working conditions to all workmen and employees at the Site including safe means of access, railings, stairs, ladders, scaffoldings etc. The scaffoldings shall be erected under the control and supervision of an experienced and competent person. For erection, good and standard quality of material only shall be used by the Contractor.
- GCC 4.8 The Contractor shall not interfere or disturb electric fuses, wiring and other electrical equipment belonging to the Owner or other Contractors under any circumstances, whatsoever, unless expressly permitted in writing by the Employer to handle such fuses, wiring or electrical equipment.
- GCC 4.9 Before the Contractor connects any electrical appliances to any plug or socket belonging to the other Contractor or the Employer, he shall:
- a) Satisfy the JUSNL Division /JUSNL PIU that the appliance is in good working condition;
  - b) Inform the JUSNL Division /JUSNL PIU of the maximum current rating, voltage and phases of the appliances;
  - c) Obtain permission of the JUSNL Division /JUSNL PIU detailing the sockets to which the appliances may be connected.
- GCC 4.10 The JUSNL Division /JUSNL PIU will not grant permission to connect until he is satisfied that:
- a) The appliance is in good condition and is fitted with suitable plug;
  - b) The appliance is fitted with a suitable cable having two earth conductors, one of which shall be an earthed metal sheath surrounding the cores.
- GCC 4.11 No electric cable in use by the Contractor/Owner will be disturbed without prior permission. No weight of any description will be imposed on any cable and no ladder or similar equipment will rest against or attached to it.
- GCC 4.12 No repair work shall be carried out on any live equipment. The equipment must be declared safe by the JUSNL Division /JUSNL PIU and a permit to work shall be issued by the JUSNL Division /JUSNL PIU before any repair work is carried out by the contractor. While working on electric lines/equipment, whether live or dead, suitable type and sufficient quantity of tools will have to be provided by the Contractor to electricians/workmen/officers.
- GCC 4.13 The Contractors shall employ necessary number of qualified, full time electricians/electrical supervisors to maintain his temporary electrical installation.

- GCC 4.14 The Contractor employing more than 100 workmen whether temporary, casual, probationer, regular or permanent or on contract, either directly or through the Contractor shall employ at least one full time officer exclusively as EHS Officer (who shall have a Bachelors degree in Environmental Management/ Environmental Engineering /Environmental Science with additional qualification in safety) to supervise safety aspects of the equipment and workmen, who will coordinate with the Environmental Officer and Social Officer . In case of work being carried out through Sub-Contractors, the Sub-Contractor's workmen/employees will also be considered as the Contractor's employees/workmen for the above purpose. Contractor shall employ a social team as it may deem fit. The Social Team would be led by the Social Officer (who shall have degree Sociology/ Anthropology/ Economics or any other Social Science with experience in handling resettlement of multilateral funded projects) and would assist the Contractor to carry out negotiation with the land owners. The name and address of such EHS Officer and Social Officer of the Contractor will be promptly informed in writing to JUSNL with a copy to JUSNL Division /JUSNL PIU before he starts work or immediately after any change of the incumbent is made during currency of the Contract.
- GCC 4.15 In case any accident occurs during the construction/ erection or other associated activities undertaken by the Contractor thereby causing any minor or major or fatal injury to his employees due to any reason, whatsoever. It shall be the responsibility of the Contractor to promptly inform the same to the JUSNL Division /JUSNL PIU in prescribed form and also to all the authorities envisaged under the applicable laws.
- GCC 4.16 The JUSNL Division /JUSNL PIU shall have the right at his sole discretion to stop the work, if in his opinion the work is being carried out in such a way that it may cause accidents and endanger the safety of the persons and/or property, and/or equipment. In such cases, the Contractor shall be informed in writing about the nature of hazards and possible injury/accident and he shall comply to remove shortcomings promptly. The Contractor after stopping the specific work can, if felt necessary, appeal against the order of stoppage of work to the JUSNL Division /JUSNL PIU within 3 days of such stoppage of work and decision of the JUSNL Division /JUSNL PIU in this respect shall be conclusive and binding on the Contractor.

#### **1.4 EHS RULES**

- GCC 5.1 Each employee of the Contractor shall be provided with initial indoctrination regarding Environment Health and Safety by the Contractor, so as to enable him to conduct his work in a safe and sustainable manner.
- GCC. 5.2 No employee shall be given a new assignment of work unfamiliar to him without proper introduction as to the hazards incident thereto, both to himself and his fellow employees.
- GCC 5.3 Under no circumstances shall an employee hurry or take unnecessary chance when working under hazardous conditions.

- GCC 5.4 Employees must not leave naked fires unattended. Smoking shall not be permitted around fire prone areas and adequate firefighting equipment shall be provided at crucial location.
- Employee should also not leave any equipment/machinery /activity unattended if it has the potential to cause harm to the environment
- GCC 5.5 Employees under the influence of any intoxicating beverage, even to the slightest degree shall not be permitted to remain at work.
- GCC 5.6 The contractor shall make suitable arrangement at every work site for rendering prompt and sufficient first aid to the injured.
- GCC 5.7 The staircases and passageways shall be adequately lighted.
- GCC 5.8 The employees when working around moving machinery must not be permitted to wear loose garments. Safety shoes, safety helmets (IS 2925: 1984) are recommended when working in the construction site or any activity related to the project where materials or tools are likely to fall. When working at height the Contractor shall ensure that all employees use full body harness (as per IS 3521: 1999). Only experienced workers shall be permitted to go behind guard rails or to clean around energized or moving equipment. The employer shall at periodic intervals or as he may deem fit inspect these equipment and ask the Contractor for replacement of the personal safety equipment.
- GCC 5.9 The employees must use the standard protection equipment intended for each job. Each piece of equipment shall be inspected before and after it is used. During the testing and charging of electrical lines and substation, the Contractor shall provide electricity insulating protective equipment like footwear (ISO 20345: 2004 Part-2), rubber gloves (IS 4770: 1991) to workers. In addition, provisions of the "Central Electricity Authority (Measures Relating to Safety and Electric Supply) Regulations 2010" would be adhered to.
- GCC 5.10 Requirements of ventilation in underwater working to licensed and experienced divers, use of gum boots for working in slushy or in inundated conditions are essential requirements to be fulfilled.
- GCC 5.11 In case of rock excavation, blasting shall invariably be done through licensed blasters and other precautions during blasting and storage/transport of charge material shall be observed strictly.

Annexure 3

Special Conditions of  
Contract for Mahuadanr  
Substation

- SCC 1.1     The Contractor shall ensure that the pond located adjacent to the northern boundary (outside the allotted site) is not filled up during the process of site preparation.
- SCC 1.2     The Contractor shall ensure that adequate erosion and sediment control measures are undertaken during the construction of the substation. In addition to the standard engineering techniques bio-engineering techniques as stated in the Annexure 10 of the ESMF would be adopted for slope stabilization.
- SCC 1.3     The Contractor shall ensure that the cut and fill slopes would be protected using standard engineering practices including bio-engineering techniques as stated in the Annexure 10 of the ESMF as appropriate.
- SCC 1.4     The Contractor to ensure that during the thunderstorm no workers are working out in the open areas. This is being considered as a special safety precaution to prevent lighting hazards at site.
- SCC 1.5     The Contractor should ensure that the Labour staying at site is provided with water conforming to IS: 10500. In case ground water is being provided with water from tube wells /bore wells the contractor should install adequate filtration systems to remove the fluoride.
- SCC 1.6     Contractor should ensure that nighttime movement of vehicles carrying construction equipment and materials to be restricted and speed of the vehicles not to exceed 15 km/hr in Mahuadanr-Chainpur Village road especially through the villages and along the sharp bends.
- SCC 1.7     Contractor should place traffic wardens at the approach road to the site to supervise vehicle movement; vehicular speed to be maintained <20 km/h.
- SCC 1.8     Contractor should ensure that graveyard located close to the site is not disturbed during construction. Further, construction waste and construction material should not be stored near the graveyard.

## Format for Reporting of ESMP Implementation

# JHARKHAND POWER SYSTEMS IMPROVEMENT PROJECT

## ENVIRONMENTAL MANAGEMENT PLAN MONTHLY IMPLEMENTATION STATUS REPORT

Name of the Substation\_\_\_\_\_

Period/Month \_\_\_\_\_

EMP Refer ence	Activities	Observation/ Status till end of last Observation/ Period	Status till end of this Period
8.	Site Preparation		
8ai	Has the pre-construction equipment checks been carried out (use additional sheets to provide the monitored Leq values)		
8aai	Is regular equipment maintenance being carried out? (Use additional sheets to provide maintenance log)		
8aiv	Has monthly noise monitoring been carried out for DG sets		
8av	Has any permission been provided by Chief Engineer for night time work?		
8bi	Has quarterly air quality monitoring been carried out during the earthwork?		
8biii	Is PUCC certificate log book being maintained on regular basis?		
8biv	Instrument, machine, vehicle maintenance log book should be maintained on regular basis		
10ci	Has the Cut and fill slopes been protected with using standard engineering practices?		
10.ci	Has peripheral site drainage channel and provision of oil-water separator been made for the site?		
10di	Has septic tanks and soak pits/modular bio-toilets would be provided at construction camp?		
10ei	Are best practices been adopted for ground water usage?		
10g	Has the safety practices been undertaken during the construction? Please explain in details whether barricading, reflective tapes has been undertaken?		
10g	What steps has been taken for coordination with local communities?		
10h	What initiatives have been taken to prevent obstruction to traffic?		
11	Please indicate the actions which have been taken to prevent conflicts with local workers?		
12ai	Have the workers been provided with relevant PPE?		
12aai	How many observation on non – compliance in using personal protective equipment?		

EMP Refer ence	Activities	Observation/ Status till end of last Observation/ Period	Status till end of this Period
12bi	Has the Contractor carried out Health Safety training for workers? (Please provide details of training carried out). This should include the details of carrying out the induction training, refresher training etc.		



Annexure 5

Format for Registering  
Grievance from Community/  
Project Affected Persons

## JHARKHAND POWER SYSTEMS IMPROVEMENT PROJECT

### GRIEVANCE REDRESSAL MECHANISM

#### Format for Grievance Recording

Name of the Village: \_\_\_\_\_

Name of Block: \_\_\_\_\_

Name of the Transmission Line: \_\_\_\_\_

Period/Month: \_\_\_\_\_

*The project welcomes complaints, suggestions, queries and comments regarding project implementation. We encourage persons with grievance to provide their name and contact information to enable us to get in touch with you for clarification and feedback. Mentioning the name and Contact details are essential as this would help us in getting in touch with you. Should you choose to include your personal details but want that information to remain confidential, please inform us by writing/typing \*(CONFIDENTIAL)\* above your name.*

*Thank you.*

*Managing Director*

*Jharkhand Urja Sancharan Nigam Limited*

Date	Sub Division of Registration (to be filled by JE)
Contact Information/Personal Details	
Name	
Address	
Phone Number	
<b>Complaint/Suggestion/Comment/Question:</b> <i>Please provide the details ( who, what, where and how) of your grievance below:</i>	
<i>If included as attachment/note/letter, please tick here:</i>	

***For Official Use Only***

Registered by ( <i>Name of the Junior Engineer Registering Grievance</i> )
Mode of Communication:  1. Letter  2. Verbal/Telephonic
Reviewed by (Name /Position of Official reviewing Grievance)
Action Taken
Whether Action Taken has been communicated to the Complainant: Yes/No

Annexure 6

## DGMS Prescribe Permissible Limit of Ground Vibration

### *DGMS Prescribed Permissible Limit of Ground Vibration*

Type of Structure	Dominant Excitation Frequency, HZ		
	<8 HZ	8-25 HZ	>25 HZ
(A) Building/ Structure not belong to the owner			
1. Domestic house/structures (Kutchcha, Bricks & Cement)	5	10	15
2. Industrial Building	10	20	25
3. Objects of historical & Sensitive Structures	2	5	10
(B) Buildings belongs to the owner with limited span of life			
1. Domestic houses/structures	10	15	20
2. Industrial buildings	15	25	50

## Annexure 7

# Management Plan for Labour Influx

## **MANAGEMENT PLAN FOR LABOUR INFLUX**

It is envisaged that during construction phase of the project, labourers for various jobs such as civil, mechanical and electrical works will be hired through authorised manpower agencies. The labour requirement will be around 50 workers (including the unskilled labourers) for construction of substation. Since the skilled workers will be employed from outside the region and there may be also possibility of bringing in unskilled labourers from outside the region (in case of unavailability of unskilled labour from the local area), it will therefore, be migrant labourers and hence, accommodation will be provided. These migrant labourers will be accommodated in a temporary campsite within the project area. This could result in stress on local resources, disruption in community relations, and movement of labours.

### ***Objective:***

The influx of migrant labour will have both negative and positive impacts on the nearby community and local environment. The labour will be accommodated in temporary campsite within the project boundary which can have significant interface with the nearby community. However, the influx of migrant workers would lead to a transient increase of population in the immediate vicinity of the project area for a limited time. This would put pressure on the local resources such as roads, fuel wood, water etc. Hence, a plan has been designed to demonstrate the:

- Potential impacts associated with influx on the host population and receiving environment are minimized;
- Provision of safe and healthy working conditions, and a comfortable environment for migrant labour; and
- To ensure compliance with the IFC PS 2 and 4 and national labour laws;

### ***IFC Performance Standards:***

International Finance Cooperation (IFC) Performance Standard 2- Labour and Working Conditions is specific to labour and working conditions. This Standard focuses on the protection of the basic rights of workers, fostering constructive worker-management relationships, as well as promoting fair treatment and the provision of a safe and healthy workplace. The basic provisions for migrant workers under PS 2 are enumerated below:

- As per the provisions of PS 2, the client shall identify migrant workers engaged through third party and ensure that they are engaged on substantially equivalent terms and conditions to non-migrant workers carrying out similar work (if any);
- The contractor shall ensure provision of adequate accommodation, transportation, and basic services including water, sanitation, and medical care for the workers working on that project;

- The compensation paid to the migrant workers should be non-discriminatory and the principle of equal opportunity and fair treatment to be followed; and
- Wastewater, sewage, food and any other waste materials are to be properly handled, in compliance with local standards– whichever is more stringent – and without causing any significant impacts to the biophysical environment or surrounding communities.

**IFC PS 4 – Community Health, Safety and Security** carries health and safety through to the community environment. The objectives of the Performance Standard are:

- To minimise and manage health and safety risks to local communities; and
- To ensure that the project does not harm community health and safety.

***General Requirements:***

All migrant workers are envisaged to be accommodated in temporary campsite within the project area. If migrant workers are accompanied by their families, provisions should be made accordingly. Guidance on Workers Accommodation developed by IFC and EBRD is also referred for inclusion of requirements for labour camp to be established by contractor during construction phase of the project . Contractor shall ensure implementation of the following measures to minimise the potential negative impacts of worker accommodation and workers on local communities:

**Cleanliness:** Pest extermination, vector control and disinfection are to be carried out throughout the living facilities in compliance with local requirements and/or good practice.

Complaints and incident reporting: A formal Complaints Procedure will be implemented to ensure timely and transparent response to complaints as received from labour.

**Labour education:** The workforce will be sensitized to local social and cultural practices through provision of an induction course for all employees that stipulates expected behaviour;

Labour behaviour in campsite provided: A Code of Behaviour governing appropriate behaviour in the accommodation facilities to be kept in place and to be strictly enforced. The contractor shall ensure implementation of the “rules of engagement” between labours living in campsite and community and shall be implemented by construction contractors for all engaged labours. Labour Compensation and Accommodation: Client shall ensure that labours are provided with benefits such as annual leave, weekly rest day, etc. Accommodation to be provided for the construction labour which cover facilities (including catering facilities, dining areas, washing and laundry facilities etc.) and supporting utilities.



### ***Hiring and Recruitment Procedures:***

The manpower contractor shall, wherever possible, locally recruit the available workforce and shall provide appropriate and requisite on job and EHS training as necessary. The following general measures shall be considered for the workforce during their employment tenure:

- Project should include a code of conduct relating to the accommodation to be signed with the contract document of contractor.
- The contractor shall not employ any person below the age of 18 years nor will have any forced labour;
- The construction labourers will be provided with documented information regarding their rights under national labour and employment law such as but not limited to Factories Act, Minimum Wages Act, Trade Unions Act and Workmen's Compensation Act;
- First priority for employment of labour should be given those impacted by the project such as landowners who have lost land or those who have their land parcels under ROW;
- No discrimination shall be done by the contractor with respect to recruitment and hiring, compensation (including wages and benefits), working conditions and terms of employment, access to training, job assignment, termination of employment or retirement, and disciplinary practices;
- The contractor to ensure that work hours are set at eight hours a day, 48 hours a week, with a weekly rest day for all engaged labours;
- Every labour is entitled for maximum of only two hours a day as Overtime (OT) work. OT pay is twice the hourly remuneration;
- Project shall ensure equal wages for male and female workers for work of equal nature or value is maintained;
- A grievance redress mechanism for workers shall be put in place by the contractor to raise workplace concerns. The workers will be informed about the grievance mechanism at the time of recruitment; and
- The Project shall ensure that the contractor develops and implement a procedure to review the performance of their sub-contractors, if any.
- The procedure developed should include regular inspection of the camp sites, maintaining information pertaining to labours sourced by sub-contractors;

### ***Workers' Accommodation:***

The Project will supervise and monitor the activities performed by their contractor and accommodation facilities provided in the campsite. The following measures shall be provided:

- The labour will be provided with accommodation on twin sharing basis made of insulated material and locally available building material, etc.;
- The migrant workers with families shall be provided with individual accommodation comprising bedroom, sanitary and cooking facilities;
- The units will be supported by common latrines and bathing facilities duly segregated for male and female labour;

- Adequate number of toilets shall be provided in the accommodation facilities. A minimum of 1 unit to 15 males and 1 unit for 10 females shall be provided;
- The contractor shall provide a kitchen facility for the construction workers and the food will be of appropriate nutritional value and will consider religious/cultural backgrounds;
- All doors and windows shall be lockable and mobile partitions/curtains shall be provided for privacy;
- Facilities for the storage of personal belongings for workers shall be provided within the campsite only;
- Dustbins shall be provided for collection of garbage and will be removed on a daily basis;
- It is also required to provide first aid box in adequate numbers; and
- Ventilation should be appropriate for the climatic conditions and provide workers with a comfortable and healthy environment to rest and spend their spare time.

#### *Security:*

The contractor shall put in place the following security measures to ensure the safety of the workers. The following measures shall be incorporated:

- Access to the campsite shall be limited to the residing workforce;
- The contractor shall be responsible for deploying adequate number of guards;
- Adequate, day-time night-time lighting shall be provided;
- The security personnel shall be provided with training to respect the community traditions and in dealing with, use of force etc.; and
- The rental accommodation shall be provided with firefighting equipment and portable fire extinguishers.

#### *Provision of Drinking Water:*

Access to an adequate and convenient supply of free potable water is necessity for workers. The domestic water supply shall be made available by the contractor.

- Safe drinking water conforming to the IS 10500:2012 for drinking water shall be provided;
- Private tanks can be utilized for provision of drinking water for the migrant labours;
- The direct usage of water from bore well should not be allowed and water shall be adequately treated;
- The Project should regularly monitor the quality of drinking water available. In case of non-compliance with the Drinking Water Specifications, additional treatment shall be provided or alternative sources of water supply shall be arranged; and
- All tanks used for the storage of drinking water are constructed and covered as to prevent water stored therein from becoming polluted or contaminated.

### ***Cooking Arrangement:***

The construction phase will involve engagement of large number of migrant people in the project area for a limited time. Hence, there shall be requirement of provision of cooking facilities (kitchen) as listed below:

- Places for food preparation are designed to permit good hygiene practices, including protection against contamination between and during food preparation;
- Adequate personal hygiene including designated areas for cleaning hands and cleaning of utensils; and
- All kitchen floors, ceiling and wall surfaces adjacent to or above food preparation and cooking areas are built using durable, non-absorbent, easily cleanable, non-toxic materials;
- Food preparation area to be durable, easily cleanable, non-corrosive surface made of non-toxic materials.

To ensure that the fuel need of labourers in the project area does not interfere with the local requirements, necessary arrangements for supply of cooking fuel to the labourers shall be done by the contractor. In case, fuel requirement for cooking purposes are only to be met by fuel wood then that must be purchased from authorized vendors.

### ***Waste Water Generation:***

There will be generation of wastewater from the campsite. About 80% of water used shall be generated as sewage/wastewater. Contractor shall ensure that the campsite are equipped with septic tank and soak pit for disposal of sewage or with mobile bio-toilets. It is also recommended that the storm water and sewage system should be separate. The surface water drainage shall include all necessary gutters, down pipes, gullies, traps, catch pits, manholes etc. Sanitary and toilet facilities are constructed of materials that are easily cleanable. Sanitary and toilet facilities are required to be cleaned frequently and kept in working condition.

### ***Solid Waste Management:***

The solid waste generated from campsite will mostly comprise of compostable wastes like vegetable residues (kitchen waste) and combustible waste like paper, cans, plastic and some non-degradable waste like glass/glass bottles. Improper disposal of solid waste will lead to environmental degradation and health hazards to labour as well as nearby community.

The following measures shall be adopted by contractors for ensuring effective management of solid waste:

- The solid wastes of domestic nature generated shall be collected and stored separately in appropriate containers with proper sealing on them;
- Separate bins with proper markings in terms of recyclable or non-recyclable waste shall be provided in the houses and kitchen premises in sufficient numbers for collection of garbage;

- Food waste and other refuse are to be adequately deposited in sealable containers and removed from the kitchen frequently to avoid accumulation; and
- It is the responsibility of contractor to ensure safe disposal of all wastes generated out of labour camps.

### *Medical Facility:*

Effective health management is necessary for preventing spread of communicable diseases among labour and within the adjoining community. The following medical facilities shall be provided by contractors for the construction workers:

- A first aid centre shall be provided for the labour within the construction site equipped with medicines and other basic facilities;
- Adequate first aid kits shall be provided in the campsite in accessible place. The kit shall contain all type of medicines and dressing material;
- Contractor shall identify and train an adequate number of workers to provide first aid during medical emergencies;
- Regular health check-ups shall be carried out for the construction labourers every six month and health records shall be maintained;
- Labours should have easy access to medical facilities and first aid; where possible, nurses should be available for female workers;
- First aid kits are adequately stocked.
- Information and awareness of communicable diseases, AIDS etc. shall be provided to workers.
- Basic collective social/ rest spaces are provided to workers.;

### *Inspection of camp sites:*

- Campsite shall be inspected at frequent intervals to ensure that the facilities are well organized and maintained to acceptable and appropriate standards by the contractor. The key areas are:
- Daily sweeping of rooms and houses shall be undertaken;
- Regular cleaning of sanitary facilities shall be undertaken;
- The kitchen and canteen premises shall be established under good hygiene conditions;
- Daily meal times shall be fixed for the labour;
- Smoking and alcohol consumption shall be prohibited in the workplace;
- Water logging shall be prevented at areas near the accommodation facilities and adequate drainage is to be provided; and
- Checklists pertaining to the daily housekeeping schedule shall be maintained and displayed at houses, toilets and kitchen.

To limit the impact due to cumulative labour onsite during construction phase, contractor shall provide adequate number of labour camps which should be appropriate for its location and be clean, safe and, at a minimum, meet the basic needs of workers.

- Contractor should assess the location of labour camp, that it should not be constructed in immediate vicinity of any drainage channel;

- All tanks used for the storage of drinking and cooking water to be covered as to prevent water stored therein from becoming polluted or contaminated and all the migrant workers will be instructed accordingly;
- Contractor should ensure that accommodation which is provided is not overcrowded and does not pose a risk to the health and safety of workers;
- The labour camp will be equipped with septic tanks and soak pits and avoid presence of stagnant water is a factor of proliferation of potential disease vectors such as mosquitoes;
- Contractor should ensure that the disruption of local communities is minimum and if required limit the worker's movements in the nearby areas;
- Security staff should have a clear mandate and instructions about their duties and responsibilities such as not to harass, intimidate, discipline or discriminate against workers;
- Contractor should ensure that workers and members of the surrounding communities have specific means to raise concerns about security arrangement and staff;

#### ***Grievance Redress Mechanism:***

A Grievance Redress Mechanism (GRM) shall be formulated for the construction labourers (local and migrant) comprising of a review committee including representatives elected by labour and management representatives. Project can extend the grievance mechanism developed for the project to the contractor also. A documented GRM shall have the following elements:

- Proper system for lodging grievances;
- Provision for raising anonymous complaints;
- Appropriate level of management for addressing concerns;
- Workers and members of the surrounding communities have specific means to raise concerns about security arrangement and staff;
- Provision for timely action and feedback;
- Monitoring and review of grievances raised and action taken; and scope for continual improvement of the system.

## Annexure 8

# Socio-Economic Survey format

## Socio Economic Survey Form for Proposed Grid Sub Station Site of JPSIP

Form No		Village Name	
Domicile No		Name of the Surveyor	
Name of the Informant		Signature	
Relationship with HOH		Date	

<b>A1. What Caste Do You Belong</b>				<b>A2. What is Your Religious Group</b>				<b>A3. Do You Have BPL Ration Card</b>	
General	SC	ST	OBC	Hindu	Muslim	Christian	Sikhs	Yes	No
①	②	③	④	①	②	③	④	①	②

Member Number	1	2	3	4	5	6	7	8	9	10	11	12	
<b>B1.1 Name</b>	HOH												Write down the names of all person who live and eat together in this household (sharing same kitchen) starting with head
<b>B1.2 Relationship</b>													
<b>B1.3 Sex</b>	Is the NAME male or female?												
	M	M	M	M	M	M	M	M	M	M	M	M	
	F	F	F	F	F	F	F	F	F	F	F	F	
<b>B1.4 Age</b>	How old was NAME on the last birthday?												
<b>B1.5 Education</b>	The class till which the person has been educated.												
	①	①	①	①	①	①	①	①	①	①	①	①	Illiterate
	②	②	②	②	②	②	②	②	②	②	②	②	Primary (class 3)
	③	③	③	③	③	③	③	③	③	③	③	③	Secondary (Class 10)
	④	④	④	④	④	④	④	④	④	④	④	④	Higher (graduate)
	⑤	⑤	⑤	⑤	⑤	⑤	⑤	⑤	⑤	⑤	⑤	⑤	Technical
	⑥	⑥	⑥	⑥	⑥	⑥	⑥	⑥	⑥	⑥	⑥	⑥	Vocational
<b>B1.6</b>	Is the NAME working?												
	①	①	①	①	①	①	①	①	①	①	①	①	Yes
	②	②	②	②	②	②	②	②	②	②	②	②	No
<b>B1.7 Occupation</b>	A. The main activity at the place of job?												
	This may have multiple entries												
	①	①	①	①	①	①	①	①	①	①	①	①	Agriculture
	②	②	②	②	②	②	②	②	②	②	②	②	Agri Labour
	③	③	③	③	③	③	③	③	③	③	③	③	Non Agri Labour
	④	④	④	④	④	④	④	④	④	④	④	④	Business/Trade

	5	5	5	5	5	5	5	5	5	5	5	5	Govt. Service
	6	6	6	6	6	6	6	6	6	6	6	6	Private Service
	7	7	7	7	7	7	7	7	7	7	7	7	Maid Servant
	8	8	8	8	8	8	8	8	8	8	8	8	Others
<b>B1.8</b>	<b>What was the main reason for the NAME not working?</b>												To be filled for persons who are not working.
	1	1	1	1	1	1	1	1	1	1	1	1	No work available
	2	2	2	2	2	2	2	2	2	2	2	2	Seasonal inactivity
	3	3	3	3	3	3	3	3	3	3	3	3	Household family duties
	4	4	4	4	4	4	4	4	4	4	4	4	Old/young
	5	5	5	5	5	5	5	5	5	5	5	5	Handicapped
	6	6	6	6	6	6	6	6	6	6	6	6	Others
<b>B1.9 Income</b>	<b>How much does the NAME earn in a month?</b>												
	1	1	1	1	1	1	1	1	1	1	1	1	Rs. 0-Rs. 2000
	2	2	2	2	2	2	2	2	2	2	2	2	Rs. 2000-Rs. 5000
	3	3	3	3	3	3	3	3	3	3	3	3	Rs. 5000 and 10,000
	4	4	4	4	4	4	4	4	4	4	4	4	10,000+
<b>C1.1 Skills</b>	<b>What is the skill possessed by the person?</b>												
													e.g.: traditional artisans, carpentry, mason, weaving, garage mechanic, nursery, others (please mention)



D1.1 Which of the following are availed by the family	<b><u>General Scheme</u></b> <ol style="list-style-type: none"> <li>1. Old age Pension Scheme</li> <li>2. Widow Pension Scheme</li> <li>3. Pradhanmantri Awas Yojana</li> <li>4. Chief Minister Health insurance scheme</li> <li>5. Udyami Sakhi Mandal Yojana (To empower rural women)</li> <li>6. ARYA scheme (To attract rural youth in agriculture in Jharkhand)</li> <li>7. Vimrao Ambedkar Awas Yojana for widow in Jharkhand</li> </ol>				
	<b><u>Scheme for Tribal people</u></b> <ol style="list-style-type: none"> <li>1. PTG Dakiya Yojana (Free rice scheme for primitive tribal group)</li> <li>2. Eklavya Model Residential Schools for Tribal Student</li> <li>3. Development and Marketing of Tribal Products</li> <li>4. Scheme for Minimum Support Price for Minor Forest Produce</li> <li>5. Educational Fellowship and Scholarship for Higher Education of ST Students. 2017-2018"</li> <li>6. National Overseas Scholarship for ST candidates</li> <li>7. Pre and Post Matric Scholarship</li> <li>8. Establishment of Ashram Schools in Tribal Sub-Plan Areas</li> <li>9. Centrally Sponsored Scheme of Hostels for ST boys and ST Girls</li> </ol>				
	<b><u>Others (Please Specify)</u></b>    				
E1.1 Amenities	A. What is the drinking water source for the family?				
	Piped Water <input type="checkbox"/>	Tube Well <input type="checkbox"/>	Well <input type="checkbox"/>	Pond <input type="checkbox"/>	Any other, specify.....
	B. What is the source of water for domestic use?				
	Piped Water <input type="checkbox"/>	Tube Well <input type="checkbox"/>	Well <input type="checkbox"/>	Pond <input type="checkbox"/>	Any other, specify.....
	C. Is the water source used by you or other families also		Only by the HH <input type="checkbox"/>	Shared by other families <input type="checkbox"/>	
	D. Availability of Household Electricity			Yes <input type="checkbox"/>	No <input type="checkbox"/>
	E. Are there Primary Schools nearby (within 1 - 1.5 km)			Yes <input type="checkbox"/>	No <input type="checkbox"/>
	F. Are there Secondary Schools nearby				
	G. Are there Colleges nearby				
H. Are there Hospitals nearby		Private Hospital <input type="checkbox"/>	Govt. Hospital <input type="checkbox"/>	None <input type="checkbox"/>	

## Annexure 9

# Assessment of Impact Significance

### Impacts on Aesthetics & Visual Quality

Impact	Aesthetic and visual impact			
Impact Nature	Negative	Positive	Neutral	
Impact Type	Direct	Indirect	Induced	
Impact Duration	Short Term	Medium Term	Long Term	
Impact Extent	Local	Regional	National	
Impact Scale	Low	Medium	High	
Impact Magnitude	Positive	Small	Medium	Large
Resource/ Receptor Sensitivity	Low	Medium	High	
Impact Significance	Negligible	Minor	Moderate	Major
	Significance of impact is considered <b>Negligible</b>			

### Impacts on Air Quality

Impact	Air quality impact			
Impact Nature	Negative	Positive	Neutral	
Impact Type	Direct	Indirect	Induced	
Impact Duration	Short Term	Medium Term	Long Term	
Impact Extent	Local	Regional	National	
Impact Scale	Low	Medium	High	
Impact Magnitude	Positive	Small	Medium	Large
Resource/ Receptor Sensitivity	Low	Medium	High	
Impact Significance	Negligible	Minor	Moderate	Major
	Significance of impact is considered <b>Negligible to Minor</b>			

### Impacts on Noise Quality

Impact	Noise quality impact			
Impact Nature	Negative	Positive	Neutral	
Impact Type	Direct	Indirect	Induced	
Impact Duration	Short Term	Medium Term	Long Term	
Impact Extent	Local	Regional	National	
Impact Scale	Low	Medium	High	
Impact Magnitude	Positive	Small	Medium	Large
Resource/ Receptor Sensitivity	Low	Medium	High	
Impact Significance	Negligible	Minor	Moderate	Major
	Significance of impact is considered <b>Minor</b>			

### Impact on Land use, Soil & Drainage

Impact	Impact on Land use, Soil & Drainage		
Impact Nature	Negative	Positive	Neutral
Impact Type	Direct	Indirect	Induced
Impact Duration	Short Term	Medium Term	Long Term
Impact Extent	Local	Regional	National

Impact Scale	Low		Medium		High				
Impact Magnitude	Positive		Small		Medium		Large		
Resource/ Receptor Sensitivity	Low			Medium			High		
Impact Significance	Negligible		Minor			Moderate		Major	
	Significance of impact is considered <b>Minor</b>								

### **Impact on Surface Water Bodies**

Impact	Impact on Surface Water Bodies			
Impact Nature	Negative		Positive	Neutral
Impact Type	Direct		Indirect	Induced
Impact Duration	Short Term		Medium Term	Long Term
Impact Extent	Local		Regional	National
Impact Scale	Low		Medium	High
Impact Magnitude	Positive	Small	Medium	Large
Resource/ Receptor Sensitivity	Low		Medium	High
Impact Significance	Negligible	Minor	Moderate	Major
	Significance of impact is considered <b>Negligible</b>			

### **Impact on Water Resources**

Impact	Impact on water resource			
Impact Nature	Negative		Positive	Neutral
Impact Type	Direct		Indirect	Induced
Impact Duration	Short Term		Medium Term	Long Term
Impact Extent	Local		Regional	National
Impact Scale	Low		Medium	High
Impact Magnitude	Positive	Small	Medium	Large
Resource/ Receptor Sensitivity	Low		Medium	High
Impact Significance	Negligible	Minor	Moderate	Major
	Significance of impact is considered <b>Negligible</b>			

### **Impact on Biological Environment**

Impact	Impact to Biological Environment			
Impact Nature	Negative	Positive	Neutral	
Impact Type	Direct	Indirect	Induced	
Impact Duration	Short Term	Medium Term	Long Term	
Impact Extent	Local	Regional	National	
Impact Scale	Low	Medium	High	
Impact Magnitude	Positive	Small	Medium	Large
Resource/ Receptor Sensitivity	Low	Medium	High	

Impact Significance	Negligible	Minor	Moderate	Major
	Significance of impact is considered <b>Minor to Moderate</b>			

### **Impact on Socio-economic Conditions**

Impact	Impact on Socio-economic Conditions			
Impact Nature	Negative	Positive	Neutral	
Impact Type	Direct	Indirect	Induced	
Impact Duration	Short Term	Medium Term	Long Term	
Impact Extent	Local	Regional	National	
Impact Scale	Low	Medium	High	
Impact Magnitude	Positive	Small	Medium	Large
Resource/ Receptor Sensitivity	Low	Medium	High	
Impact Significance	Negligible	Minor	Moderate	Major
	Significance of impact is considered <b>Minor</b>			

### **Impact on Community Health and Safety**

Impact	Community Health and Safety			
Impact Nature	Negative	Positive	Neutral	
Impact Type	Direct	Indirect	Induced	
Impact Duration	Short Term	Medium Term	Long Term	
Impact Extent	Local	Regional	National	
Impact Scale	Low	Medium	High	
Impact Magnitude	Positive	Small	Medium	Large
Resource/ Receptor Sensitivity	Low	Medium	High	
Impact Significance	Negligible	Minor	Moderate	Major
	Significance of impact is considered <b>Minor</b>			

### **Impact on Occupational Health and Safety**

Impact	Occupational Health and Safety			
Impact Nature	Negative	Positive	Neutral	
Impact Type	Direct	Indirect	Induced	
Impact Duration	Short Term	Medium Term	Long Term	
Impact Extent	Local	Regional	National	
Impact Scale	Low	Medium	High	
Impact Magnitude	Positive	Small	Medium	Large
Resource/ Receptor Sensitivity	Low	Medium	High	
Impact Significance	Negligible	Minor	Moderate	Major
	Significance of impact is considered <b>Moderate</b>			

### Impact on Cultural Sensitivities

Impact	Impact on Cultural Sensitivities			
Impact Nature	Negative	Positive	Neutral	
Impact Type	Direct	Indirect	Induced	
Impact Duration	Short Term	Medium Term	Long Term	
Impact Extent	Local	Regional	National	
Impact Scale	Low	Medium	High	
Impact Magnitude	Positive	Small	Medium	Large
Resource/ Receptor Sensitivity	Low	Medium	High	
Impact Significance	Negligible	Minor	Moderate	Major
	Significance of impact is considered <b>Minor</b>			



**ERM has over 160 offices  
Across the following  
countries worldwide**

Argentina	Netherlands
Australia	Peru
Belgium	Poland
Brazil	Portugal
China	Puerto Rico
France	Singapore
Germany	Spain
Hong Kong	Sweden
Hungary	Taiwan
India	Thailand
Indonesia	UK
Ireland	USA
Italy	Venezuela
Japan	Vietnam
Korea	
Malaysia	
Mexico	

ERM India Private Limited  
Building 10, 4th Floor  
Tower A, DLF Cyber City  
Gurgaon – 122 002, NCR , India  
Tel: 91 124 417 0300  
Fax: 91 124 417 0301

Regional Office – West  
801, 8th Floor, Windfall, Sahar Plaza,  
J B Nagar, Andheri (East),  
Mumbai – 400 059  
Tel : 022 42107373  
Fax: 91- 022- 4210 7474

Regional Office – West  
702 Abhishree Avenue,  
Near Nehru Nagar Circle,  
Ambawadi Ahmedabad -380006 India  
Tel: +91 79 66214300  
Fax: +91 79 66214301

Regional Office -South  
Ground Floor, Delta Block  
Sigma Soft Tech Park  
Whitefield, Main Road  
Bangalore- 560 066, India  
Tel: +91 80 49366 300 (Board)

Regional Office –East  
4th Floor,  
Asyst Park, GN-37/1, Sector-V,  
Salt Lake City, Kolkata 700 091  
Tel : 033-40450300