

SOLOMON ISLANDS GOVERNMENT



MINISTRY OF MINES, ENERGY AND RURAL ELECTRIFICATION

**Solomon Islands Community Benefit Sharing Pilot Project
(CBSP)**

**ENVIRONMENTAL AND SOCIAL MANAGEMENT
FRAMEWORK
(ESMF)**

February 2017

Table of Contents

1.	INTRODUCTION	6
2.	PURPOSE AND SCOPE OF THE ESMF	6
3.	PROJECT DESCRIPTION	7
1.1	Component 1 - Establishment of benefit sharing fund and community capacity building	7
1.2	Component 2 – Improving community infrastructure	8
1.3	Component 3 – Human resource development	8
1.4	Component 4—Project Management, Monitoring and Evaluation, and Knowledge Dissemination	9
4.	POTENTIAL IMPACTS	9
4.1	Potential Impacts - Component 1	9
4.2	Potential Impacts - Component 2	10
4.2.1	Water Supply	10
4.2.2	Rural Electrification	12
4.3	Potential Impacts - Component 3	15
4.4	Potential Impacts - Component 4	16
5.	POLICY AND REGULATORY FRAMEWORK	16
5.1	World Bank Safeguard Policy	16
5.1.1	Environmental Assessment (OP 4.01)	16
5.1.2	Natural Habitats (OP/BP 4.04)	16
5.1.3	Pest Management (OB/BP 4.09)	16
5.1.4	Physical Cultural Resources (OP/BP 4.11)	17
5.1.5	Forests (OP/BP 4.36)	17
5.1.6	Indigenous Peoples (OP/BP 4.10)	17
5.1.7	Involuntary Resettlement (OP/BP 4.12)	17
5.2	Solomon Islands Regulatory Requirements	20
5.3	International Agreements	22
	<i>Convention on Biological Diversity (CBD)</i>	23
	<i>The Stockholm Convention on Persistent Organic Pollutants (POPs)</i>	23
6.	SOCIAL AND ENVIRONMENTAL MANAGEMENT FRAMEWORK	23
6.1	Component 1 Impact Management – Benefit Share Fund Design	23
6.2	Component 2A Impact Management: Water Supply	23
6.2.1	Step 1 – Site assessment and impacts and risks assessment	25
6.2.2	Step 2: Impacts and Risks Screening	28

6.2.3	Step 3: Select Mitigation Measures	32
6.2.4	Step 4: Monitoring and supervision and reporting.....	43
6.3	Component 2B Impact Management: Rural Electrification.....	43
6.3.1	Construction Mitigation Measures	43
6.3.2	Land access mitigation measures	44
6.3.3	Livelihood mitigation measures.....	45
6.3.4	Household and infrastructure connections mitigation measures	45
6.3.5	Operational Mitigation Measures.....	45
6.3.6	Monitoring and Reporting	46
6.4	Component 3 Impact Management– Human Resource Development	46
6.5	Component 4 Impact Management – Project Management.....	47
6.6	Unexploded Ordinances (UXOs)	47
7.	GRIEVANCE REDRESS MECHANISM	47
7.1	Grievance Procedures	47
7.1.1	Grievance Resolution	47
7.1.2	Grievance Records	48
8.	PUBLIC CONSULTATION AND DISCLOSURE.....	49
8.1	Community Consultation Feedback.....	49
8.2	NGO Consultation Feedback.....	50
8.3	Public consultation for CBSP projects	50
8.4	Information Disclosure.....	51
9.	INSTITUTIONAL ROLES, RESPONSIBILITIES AND CAPACITY	52
9.1	TRHDP PO	52
9.1.1	Deputy Project Manager:.....	52
9.1.2	Benefit Share Coordinator:	52
9.1.3	Environmental and Social Safeguards Officer (TRHDP PO Community Liaison Officer):	53
9.1.4	Grievance Officer (Communications Officer).....	53
9.1.5	Community WASH Consultant:	53
9.2	World Bank.....	53
9.3	WASH Contractor	54
9.4	Solomon Power	54
9.5	Environment and Conservation Division (ECD) of the Ministry of Environment, Climate Change, Disaster Management and Meteorology (MECDMM).....	54
9.6	Benefitting Community.....	54

Annexure A: Legal and Policy Context for Land Access	57
A.1 SOLOMON ISLANDS LAWA.1.1 Customary land	57
A.1.2 Registered Land	57
A.1.3 Land Access for transmission lines under the Electricity Act	58
Annexure B: Land Use Procedures.....	60
D.1 Voluntary Land Donation Protocol for Customary Land	61
D.2 Government Land	65
Annexure C: Livelihoods Entitlement Matrix	70
Annexure D: Implementation Schedule.....	74
Annexure E: Cultural Artefact Chance Find Procedures	76
Annexure F: Procedure for handling UXOs	77
1.0 Introduction	77
2.0 Objective of the Guide	77
3.0 Target Audience	78
4.0 Responsibility and Risk Mitigation Measures	78
4.1 Authority	78
4.2 General Public	79
4.3 EOD Contractors.....	79
4.4 RSIPF – EOU.....	80
5.0 Risk Assessment and Management	80
5.1 Preliminary Risk Assessment.....	80
5.2 Detailed Risk Assessment.....	80
6.0 Contact Details	80
Annex 1: Preliminary risk assessment form	82
Annexure G: Solomon Power ESMP Template	84
Annexure H: NGO ESMF CONSULTATION MINUTE.....	85
Annexure I: Community ESMF Consultation Minute	91

ACRONYMS

CBSP	Community Benefit Sharing Pilot Project
ECD	Environment and Conservation Division
ESIA	Environmental Social Impact Assessment
ESMF	Environmental and Social Management Framework
ESMP	Environment and Social Management Plan
FPIC	Free, prior, informed consultation
HOC	House of Chiefs
HRD	Human Resource Development
IA	Implementing Agency
IP	Indigenous People
LTA	Lands and Titles Act
MDPAC	Ministry of Development Planning and Aid Coordination
MECDM	Ministry of Environment, Climate Change, Disaster Management and Meteorology
MMERE	Ministry of Mines, Energy, and Rural Electrification
OP	Operational Policy
PG	Provincial Government
SBD	Solomon Islands Dollar
SI	Solomon Islands
SP	Solomon Power
SIG	Solomon Islands Government
TRHDP	Tina River Hydropower Development Project
TRHDP PO	Tina River Hydropower Development Project Office
UXO	Unexploded Ordinance or Abandoned Ordinance
WB	The World Bank

1. INTRODUCTION

The Solomon Islands Community Benefit Sharing Pilot (CBSP) Project, supported by a grant from the Japan Social Development Fund (JSDF), aims to introduce and test an innovative approach to sharing the benefits of development projects with project communities. CBSP will be implemented in connection with the Tina River Hydropower Development Project (TRHDP), which is also under preparation. TRHDP is a high priority investment for SIG as it will contribute to a significant reduction in the cost of power and improved reliability of its supply. The objective of CBSP is to establish institutional arrangements and capacity for project communities to effectively manage benefit sharing revenues from TRHDP and improve their basic services and economic opportunities. Project activities would establish the benefit sharing fund, fund initial investments in water supplies and the extension of the Honiara electricity grid to benefit share communities, and assist community members to obtain employment in construction activities. The benefit sharing area will cover Bahomea and Malango cultural areas in Malango Ward in Guadalcanal Province, consisting of 80-90 villages and hamlets of mainly indigenous people originating from the central Guadalcanal mountain lands.

Under TRHDP, the land required for the project has already been acquired by the Solomon Islands Government (SIG) via compulsory acquisition. Payments for the land were made to the indigenous landowners (tribes). These tribes will also receive a 1.5% royalty from the hydropower operator, once it starts generating power. In addition, the tribes will become joint owners with SIG of a corporation formed to manage the acquired land and lease the land to the hydropower operator. The lease payments of the land by the hydropower operator will be used for the benefit of these tribes. These measures will be implemented by TRHDP. As a pilot, CBSP will establish a mechanism for sharing benefits with a broader group of community stakeholders who will be affected by TRHDP, beyond the customary landowners who will be compensated for their loss of assets and livelihoods through the means explained above¹.

The majority of physical work under the Project will be small in scale and will mainly involve (1) provision of water supply systems; and (2) connecting benefit share communities to the Honiara electricity grid. Since the exact sites of all water supply systems and electrical connections are not known prior to the project appraisal and will need to be further clarified, an Environmental and Social Management Framework (ESMF) is prepared as required under the World Bank's Operational Policy (OP) 4.01 (Environmental Assessment). The purpose of this ESMF is to ensure that the water supply systems and electrical connections meet with both the environmental and social safeguard policies of the World Bank and laws and regulations of Solomon Islands.

The Project triggers the World Bank's safeguards policies on Environmental Assessment (OP 4.01); Natural Habitats (OP 4.04), Indigenous Peoples (OP 4.10), Physical Cultural Resources (OP 4.11), and Involuntary Resettlement (OP 4.12).

2. PURPOSE AND SCOPE OF THE ESMF

¹ It is not the intention of this project to partially cover the costs of meeting TRHDP's safeguards requirements, and therefore, the implementation of TRHDP is not dependent on this project. Rather, the project is optimizing the opportunity provided by TRHDP to pilot a new benefit sharing approach in the country.

The ESMF will serve as the project's umbrella document for environmental and social management, setting out the screening process and risk mitigation strategy to capture all of the project's environmental and social issues. The purpose of this ESMF is to guide the two Implementing Agencies (IAs) – the Ministry of Mines, Energy and Rural Electrification and Solomon Power (SP) to conduct environmental and social screening and to assess specific activities during project preparation, design and implementation. This ESMF provides:

- Project design to mitigate impacts and optimise benefits;
- Protocols for confirming and documenting authorisation of impacts on any affected land and assets prior to construction;
- Protocols during construction to mitigate any impacts;
- Consultation mechanism on the project and the ESMF and records of consultation;
- Grievance mechanism;
- Roles, responsibilities and capacity of those involved; and
- Monitoring and reporting mechanism;

The draft ESMF was prepared based on community consultations with target communities and NGOs conducted by TRHDP PO with that feedback contributing to the content of this document. Disclosure will also occur on the TRHDP website and the World Bank website, and a hard copy will be made available for review at the TRHDP PO, Hyundai Mall, Honiara.

3. PROJECT DESCRIPTION

1.1 Component 1 - Establishment of benefit sharing fund and community capacity building

This component will support the drafting of institutional arrangements and operating procedures for a benefit sharing fund, establishment of the fund, and facilitation of active community consultation and input into fund arrangements. To ensure an inclusive process of consultation, stakeholder groups will be engaged in appropriate formats, with a particular focus on ensuring that women have at least an equal voice to men.

Technical and legal advisors will be engaged to liaise with community representatives, conduct consultation meetings with a range of stakeholders and advise on fund provisions.

Draft documents will be prepared as inputs into the process of registration, including draft rules for a fund as well as other legislative, policy and procedural documents. These draft documents will be finalised following extensive community and government consultation. It is anticipated that new project specific legislation will be required to facilitate the final design of the fund and the benefit share payment mechanism.

Detailed procedural guidelines as to how the fund will operate will be developed and validated through use and review over the period of the project. Fund documentation is anticipated to include: a statement of purpose or creed; a strategic plan of key activities and a process for updating and reviewing the plan; eligibility requirements for any community grants; selection of management committee; recruitment of staff; financial management procedures; access to information and transparency; and governance and anti-corruption mechanisms.

Training and awareness raising activities will be arranged for various stakeholders. This will include targeted training for initial committee members of the fund and others with specific roles or with an interest in taking on roles in the fund in the future.

1.2 Component 2 – Improving community infrastructure

Given the nature of the hydropower facility, there are risks to the quality and availability of water as well as expectations as to access to energy. The future scope of the benefit sharing fund will likely be open to a range of priorities including education, transport, telecommunications and health, however the two highest priorities identified by affected communities through community consultations were access to water and electricity.

None of the communities in the project area have access to a reticulated water or a sewerage system. Communities rely heavily on rivers and streams, and suffer during dry seasons and heavy rainfall when river water becomes heavily silted. None of the targeted beneficiary households are connected to the Solomon Power electricity grid, and few households make use of solar power for lighting, relying instead on kerosene lamps and wood fires for cooking.

Through the combined outreach of water supply and grid-connected electricity, it is expected that nearly all of the, approximately 1,100 target beneficiary households will benefit from significant improvements to one or both of these services. Consultations on the design and location of water supplies and electricity connections will be inclusive of all stakeholders. Consultations will be designed to ensure that women have a strong voice, particularly as they are often more active than men in obtaining household water, and in managing household resources, including access to water and energy use.

The design of this component will reflect comprehensive technical assessments of present and future demand for water supplies and grid-connected electricity as well as engineering and hydrological factors. A technical service provider will be contracted to work in collaboration with communities to design, construct and ensure the sustainable operation of water supply systems. Solomon Power will implement the rural electrification sub-component, extending transmission lines from existing grids to key population centers in the ward and connecting to public infrastructure, such as schools and clinics.

1.3 Component 3 – Human resource development

One of the early benefits of the TRHDP will be opportunities for employment and contracting services during the period of construction, and to a more limited extent, afterward. Provisions will be made in the project agreements to encourage the hydropower developer, as well as the contractor responsible for building the access road, to employ individuals from the communities. Under CBSP, a roster of all eligible individuals will be prepared and training designed and delivered to enhance the readiness of these individuals to secure contracts/employment.

The Developer has been asked to provide a list of technical skills and services that will be needed so that technical and vocational training can be developed and provided to target beneficiaries. This list will be reviewed and verified under this component. CBSP will utilise the format of the pre-employment training already provided through the Honiara City Council's Rapid Employment Project (REP) both as a means to enable unemployed youth, in particular, to obtain construction jobs, as well as an ongoing resource for obtaining employment outside of the context of the hydropower project. A growing population of unemployed youth is a risk to development in the project area, and to the

project in particular. In addition to pre-employment training CBSP will provide funding for technical and vocational training for individuals. Where possible, funds will be used to provide training in country through existing local courses or through bringing in international trainers from established training organisations. Individuals will be sent overseas for training only when no other options are available.

1.4 Component 4—Project Management, Monitoring and Evaluation, and Knowledge Dissemination

Since the benefit sharing fund has yet to be established and there are no nongovernment organizations that would be appropriate or capable of managing this project, a small team will be hired by the Ministry of Mines, Energy and Rural Electrification to manage project activities and to establish the basis of ongoing government support for the operations and governance of the benefit sharing fund. A Benefit Sharing Coordinator and Assistant Coordinator will be hired to work within the TRHDP Project Office (PO) team. Procurement, accounting, engineering, communications, administrative and other core function support will be drawn from the TRHDP PO (all of which are employed under consulting contracts, not as civil servants) and supplemented as needed. TRHDP PO's Community Liaison Officer will be responsible for managing the implementation of both the TRHDP's and CBSP's environmental and social safeguards policies. TRHDP PO's Communication Officer, together with the Community Liaison Officer, will manage the CBSP's Feedback (Grievance) Mechanism. Consulting services will be engaged to monitor and evaluate the results of this project and the implications it holds for the implementation of the benefit sharing arrangements that will take effect once the hydropower facility begins to operate.

4. POTENTIAL IMPACTS

4.1 Potential Impacts - Component 1

The design and implementation of the benefit share fund is not anticipated to have any direct environmental impacts. Once operational, the fund may support community projects or activities with environmental impacts. The types of activities the fund may undertake, and whether these will include infrastructure works, are not yet known. Similarly, until the fund design is complete, the organisational structure and institutional roles and responsibilities to manage environmental and social management are not known.

The design and implementation of the benefit share fund also carries potential social risks. These risks will include:

- disputes or loss of benefits due to financial mismanagement through lack of skills and training, corruption, or community and family pressures;
- disputes concerning the inclusion or exclusion of individuals or families on any register of members of the benefit share fund;
- fracturing of community through management disputes or allocation of benefits; and
- breakdown of the fund entity due to lack of management and leaderships skills and training, or failure of fund design to accommodate local customs and capacity.

Component 1 activities will analyse and mitigate these risks in the design of the benefit share fund and through the delivery of training and capacity building support.

4.2 Potential Impacts - Component 2

4.2.1 Water Supply

Environmental Impacts

The water supplies will be a combination of gravity fed piped systems, well and pipe designs and rain water tanks. Approximately nine clusters of water supplies will be delivered as part of the CBSP Project with adjustments made upon further investigation and detailed design.

The construction and operation of these systems will have the environmental impacts discussed in the table below.

Table 1: Water Supply - Potential Environmental Impacts

Preconstruction Impacts	Construction Impacts	Operation Impacts
Damage or loss of vegetation cover or trees related to sites of water supply constructions and access paths.	Construction machinery and work creating noise and dust emissions, including standpipe or plumbing construction in schools or villages.	Operation of any generator for pumping creating noise and emissions eg. NOx, Sox, CO and burnt hydrocarbons.
Operation of chainsaws and clearing equipment creating noise.	Sedimentation and siltation to water bodies, including streams, from construction impacts.	Insufficient drainage around standpipes and taps, or insufficient maintenance of pipelines or damage to pipelines, leading to water collection causing erosion of topsoil, creating an area of mud and nuisance to villages or schools, and creating mosquito breeding areas leading to increase in mosquito borne diseases.
Workers safety clearing sites.	Mosquitos breeding in stagnant water caused by construction disturbance increasing mosquito borne diseases.	Leakage or discharge of wastes from facilities, including accidental spillage of fuel at any generators for pumps or during transportation of fuel.
The clearance of UXO from the proposed location of the project.	River bed impacts and sedimentation and siltation of river water from extraction of river sand or gravel for construction materials.	Mosquitos breeding in wells or disused wells leading to an increase in mosquito borne diseases.
	Felling of trees for construction materials, potential for unsustainable logging activities.	Safety risk to community, particularly children, if any wells not sufficiently covered
	Water quality can be affected during construction activities when soils, wastewater, oils and lubricants, sewage and other materials are allowed to move into the environment.	Storm water drainages.

Preconstruction Impacts	Construction Impacts	Operation Impacts
	<p>Increased erosion where ground surface is disturbed for water supply sites and pipelines. Potential to increase land slip risks and increase stream siltation and sedimentation.</p> <p>The project's construction phase can cause a range of health and safety impacts.</p> <p>Construction waste accumulating at the project sites, eg. packaging or offcuts of materials.</p> <p>Safety risk to community, including children, from open holes or construction machinery</p>	<p>Extreme weather events leading to consequential damage, such as a cyclone knocking over a tank and damaging infrastructure, or a flood or earthquake damaging a pipeline and causing localised flooding.</p>

Social Impacts

The key social impacts of the water supply construction will predominately relate to any livelihood impacts on gardens for the location of infrastructure of pipelines, and to the effects of infrastructure on any cultural heritage sites or tambu places. These impacts are expected to be dealt with at the screening and design stage of any project design to select sites that minimise these impacts.

Other social impacts will include disputes or jealousies as to the location of water supplies where these benefit some houses or areas to a greater extent than others, or where the timetable for construction provides for some areas to receive benefits in advance of others.

The other key social impact will be any disputes stemming from the use of land or access to land. Predominately these disputes will arise where a question as to the ownership of land is raised.

Table 2: Water Supply – Potential Social Impacts

Preconstruction Impacts	Construction Impacts	Operation Impacts
<p>Clearance of vegetation or impacts on fauna with cultural significance.</p> <p>Identification of owners of any customary land areas for infrastructure may lead to disruption of the project or inter or intra tribal disputes.</p>	<p>Cultural sites may be affected directly by construction works where planning of site location does not carefully map and avoid cultural tambu sites. Artefacts may be exposed during digging.</p> <p>Cultural sites may be affected by dust, wastewater or solid waste from nearby construction works, such as pollution to tambu streams.</p> <p>Disturbance to any food trees or gardens by construction of infrastructure including pipelines and construction of access paths.</p>	<p>Disputes relating to the location of water supply benefits or the relative timing of construction in different areas.</p> <p>Disturbance to any gardens, houses or other livelihood assets due to any malfunction of infrastructure, such as flooding from broken pipes or poorly drained taps.</p> <p>Disturbance to any gardens, houses or other livelihood assets due to natural disasters impacting on infrastructure including washing away of pipes flooding gardens or a cyclone knocking over a water tank.</p>

4.2.2 Rural Electrification

The rural electrification in Component 2 will consist of the construction of new 11KV voltage lines to communities in the Bahomea area, and if funds allow, to the Malango area. The lines will be stepped down to provide power to key priority areas, targeting schools, clinics and major villages. The project will also cover the connection of identified schools, clinics and houses to the grid, to the extent the financial resources are available, including co-financing by Solomon Power, and provide for internal wiring for priority infrastructure.

The full environmental and social impacts will be assessed based on the design, scope of work, and the physical and biological environment of the project sites.

Environmental Impacts

Soil digging activities for erecting power poles may result in the generation of dust, potential drainage issue and disposal of the excess excavated materials. The presence of machinery on roads may cause nuisance to communities and pose a safety risk. The transmission line corridors will require vegetation clearances which will impact on trees in the area and could include trees used for food security by local communities. Clearance corridors also have the potential to impact on houses or other private or community infrastructure.

Solomon Power are expected to prepare a detailed Environmental and Social Management Plan for the final design of the rural electrification sub-component of the project. This design will include a detailed assessment of the preferred corridor taking into account the need to avoid impacting on livelihoods including housing.

Dust: The construction works will have a minor and temporary impact in the form of dust during dry windy conditions. Some air pollution is expected from vehicles transporting power poles, cables, and other construction materials. Except from concrete foundations for outstations, there will be very little construction related activities requiring large scale stock piling of materials.

Construction waste: It is possible that remains of construction materials may accumulate at the project sites. Solid wastes, debris, spent oils or fuel from construction machinery or plant, construction material, or waste vegetation may be resulted by project activities.

Impacts on noise level: There are no noise standard in Solomon Islands, and the noise generated by the project will be temporary (i.e. during construction) and intermittent.

Construction noise is generally intermittent, attenuates quickly with distance, and depends on the type of operation, location and function of equipment. During construction, there will be a temporary adverse impact due to the noise of the construction equipment. However, most of the works will be in thinly populated areas, away from schools or residences.

Impact on access: the project may cause temporary negative impacts, including inconvenience, disruptions to traffic using the road and on local access during the construction period.

Impacts on health and safety: the project's construction phase may cause potential health and safety impacts. The main impacts on health and safety associated with (i) risk of accidents at work sites, and (ii) traffic safety issues. The risk of spread of communicable disease is considered to be negligible.

Chance to find unexploded Ordinance (UXO): UXO is defined as explosive ordinance that has been primed, fused, armed or otherwise prepared for use in armed conflict but has failed to explode. Guadalcanal was the scene of bitter fighting during World War II. While this was over 60 years ago, UXOs may still be found in the area, particularly around Malango. Pre-construction impacts are expected to be associated mostly with the clearance of UXOs from the proposed location of the project.

Table 3: Rural Electrification – Potential Environmental Impacts

Preconstruction Impacts	Construction Impacts	Operation Impacts
Damage or loss of vegetation cover or trees as a result of clearing sites for installation of pylons and lines.	Operation of construction machines creating noise and emissions.	Accident arises posing risk to workers or community, including cyclone or earthquake felling transmission line.
Operation of chainsaws and clearing equipment creating noise.	Temporary closure or delays to access roads for community.	Lack of community awareness leads to risk of electrification, including wire theft or

Preconstruction Impacts	Construction Impacts	Operation Impacts
<p>Workers safety clearing sites.</p> <p>The clearance of UXOs from the proposed location of the project.</p> <p>Impacts from demolition wastes including disposal of oil, chemicals, debris, concrete, contaminated soil, scrap metals, etc.</p> <p>Operation of demolition machines creating noise and vibrations.</p> <p>Accidental spillage of chemicals to waterways causing pollution.</p>	<p>Community health and safety risks from unsecured worksites.</p> <p>Relocation or removal of any buildings or livelihood assets within Solomon Power transmission line clearance requirements.</p> <p>Sedimentation and siltation to adjacent water bodies.</p> <p>Water pollution during construction activities when soils, wastewater, oils and lubricants, sewage and other materials are allowed to move into the environment.</p> <p>The project's construction phase can cause a range of health and safety impacts for workers, including risks of electrification.</p> <p>It is possible that remains of construction waste accumulate at the project sites. Construction waste will be disposed at designated site approved by Solomon Power.</p>	<p>unlicensed in-house wiring repairs.</p> <p>Loss of visual amenity.</p> <p>Sabotage of transmission line creating health and safety risk.</p> <p>Ongoing loss of vegetation in maintaining Solomon Islands' transmission line safety clearance requirements.</p> <p>Storm water drainages.</p> <p>Temporary impacts to access roads for repairs and maintenance.</p>

Social impacts

Transmission Line

The construction and operation of the transmission line will require some land clearance at pylon sites, as well as the ongoing clearance of tall structures within the safety distance designated by Solomon Power.

Solomon Power will conduct a survey of livelihood assets as part of the environmental and social impact assessment undertaken for this component. The transmission line route and individual pylon sites will be chosen to minimise impacts on any livelihood assets.

The transmission line route will utilise Solomon Islands Government (SIG) owned, registered land, including the Black Post road corridor, wherever possible. Where any customary land is required for the project the free prior and informed consent and support of the community and landowners will be obtained. The process of obtaining consent to the use of customary land always carries a risk of causing or exacerbating land disputes in the community. TRHDP Project Office (PO) will take the lead role in managing the customary land use process set out in Annexure B (Land Use Procedures). This process is designed to take a non-adversarial approach to mitigate the risk of land disputes and social disruption.

Household and Community Infrastructure Connections

Installation work will be undertaken on application from the consumer (either the household owner or the manager of any community infrastructure (e.g. school principal)). All work will be conducted based on obtaining consent from the consumer for any impacts on land or assets of the consumer. The consumer will organize the access from the property boundary to the house, including trimming vegetation. The installation itself will be conducted by Solomon Power or a licensed service provider.

4.3 Potential Impacts - Component 3

Component 3 (Human Resource Development) will have negligible negative environmental impacts.. The Component will assist to eliminate the environmental and social impacts of housing a workers camp on or near the TRHDP site. Employing local residents from nearby communities removes the need to bring in outsiders, both national and international, to perform unskilled or semi-skilled roles. Concerns with workers camps in the logging industry were raised in consultations and have been documented to cause an increase in anti-social behaviour.

The Component is intended to provide positive social impacts through providing pre-employment and skills training to women and men wishing to apply for jobs in the construction of the access road and hydro scheme. Negative social impacts are anticipated to be minor and mitigation measures for these are already in place. These impacts may include jealousies or disputes concerning the inclusion of persons outside of the Benefit Share Community in the training, or the exclusion of persons within this area. To mitigate this impact extensive work has been done by the TRHDP PO to define the cultural areas of Bahomea and Malango, to prepare registers of the membership of the 27 tribes in the area, and to build relationships with community representatives to monitor and verify these registers.

If successful, the human resource development component will increase the number of people from the Benefit Share Community engaged in paid employment. An increase in paid employment can carry social risks including an increase in alcohol related anti-social behaviours and domestic violence. The employment of women can also increase domestic violence risks associated with shifting roles. These risks have been assessed as part of the Environmental and Social Impact Assessment prepared for the TRHDP project and mitigation measures designed to minimise adverse outcomes are incorporated in the TRHDP Framework ESMP.

4.4 Potential Impacts - Component 4

Component 4 (Project Management) is concerned with the management of Components 1 to 3. This component will have negligible environmental and social impacts additional to those discussed above.

5. POLICY AND REGULATORY FRAMEWORK

5.1 World Bank Safeguard Policy

The World Bank's environmental and social safeguard policies are a foundation to achieve sustainable poverty reduction. The objective of the policies is to prevent and mitigate undue harm to people, their livelihoods and their environment in the development process. The project triggers five safeguard policies: OP 4.01 Environmental Assessment; OP 4.04 Natural Habitats; OP 4.10 Indigenous Peoples; OP 4.11 Physical Cultural Resources; and OP 4.12 Involuntary Resettlement.

5.1.1 Environmental Assessment (OP 4.01)

The World Bank requires environmental screening to be carried out for investments financed by the World Bank. Environmental impacts must be identified at an early stage so that the impacts can be avoided, mitigated, or compensated.

In compliance with OP 4.01, environmental screening has been carried out for CBSP. The CBSP has been classified as Environmental Category A as the project is associated with TRHDP and will be coordinated with high risk and complex mitigation measures for TRHDP's social impacts.

ESMFs have been prepared for two Rural Development Programs (RDP I and RDP II) and the Electricity Access Expansion Project (EAEP) in Solomon Islands. This ESMF was prepared based on these three previous ESMFs, as the scale and design of activities proposed in Component 2 of CBSP, namely small-scale water supply infrastructure and extension of the Honiara electricity grid to rural population centres are similar to the activities funded under RDP and EAEP. The lessons learnt from RDP I and RDP II implementation, in particular, have been incorporated into this ESMF. EAEP is a new project as is CBSP, but it is set to roll-out sooner than CBSP, so lessons from its implementation will be incorporated into CBSP, as relevant.

5.1.2 Natural Habitats (OP/BP 4.04)

This policy is triggered in CBSP. Only modified habitat and settlement land will be affected by the project. This policy is triggered as a precautionary measure to ensure that no natural habitat is adversely affected where investments such as power distribution lines pass through areas between villages. Environmental screening will ensure that small scale water supply project siting avoids critical habitats and that negative potential impacts on other natural habitats such as streams, lakes be mitigated.

5.1.3 Pest Management (OB/BP 4.09)

This policy is not triggered in CBSP as it will not involve, or promote, pesticide use.

5.1.4 Physical Cultural Resources (OP/BP 4.11)

This policy is triggered in CBSP. The siting of small scale investment projects will avoid known physical cultural resources such as tambu sites, structures of spiritual values to communities, objects and structures having high landscape values etc. Chance Find Procedures are included in this ESMF to address the cases where objects are found during ground excavation. The Chance Find Procedure is set out in Annexure B.

5.1.5 Forests (OP/BP 4.36)

This policy is not triggered in CBSP as will not cause any negative impacts on existing forest.

5.1.6 Indigenous Peoples (OP/BP 4.10)

The vast majority of groups resident in the project area can be considered indigenous Solomon Islanders. Since the vast majority of potentially affected population is indigenous, no separate instrument will be required, but relevant elements of the policy are being integrated into project design.

Community consultations will continue to be facilitated and documented by TRHDP PO staff, including a Community Liaison Officer, and other personnel employed through the CBSP. Ongoing monitoring and community consultations by such personnel will assess whether broad community support is maintained during implementation.

Solomon Islands' *Environment Act 1998* and *Environment Regulation 2008* require robust stakeholder engagement processes including public consultation as part of Environment and Social Impact Assessment (ESIA) processes and in the decision making processes. In line with this legislation and in accordance with the World Bank's safeguards policies on indigenous peoples, the ongoing and intensive community consultation process conducted by the TRHDP PO ensures that Free, Prior and Informed Consultation is the basis for the design of the activities included in CBSP and that the project will provide benefits that are culturally appropriate to the people. In addition to the agreed criteria in the ESMF, the community and consumer driven nature of the water supply and rural electrification activities will further serve to ensure compliance with OP/BP 4.10.

5.1.7 Involuntary Resettlement (OP/BP 4.12)

The policy is triggered where economic and social impacts result from a bank assisted investment project caused by an involuntary taking of land, where involuntary includes actions which may be taken without the displaced persons informed consent or power of choice.

OP 4.12 concerns the effects of involuntary displacement of people and communities caused by a project or part of a project. Two kinds of displacement or loss are recognised, physical displacement (loss of shelter), and economic displacement (loss of assets and/or means of livelihood). Economic displacement is of relevance to the project.

This policy is triggered in CBSP as the rural electrification sub-component requires access to land for construction and maintenance and may impact crops or trees. Under the *Electricity Act* Solomon Power has statutory rights to undertake transmission line works without displaced persons' informed consent. Under this ESMF, however, all land related issues for rural electrification will be addressed

via a prior negotiated arrangement (willing buyer-willing seller or voluntary land donation, etc.) and the transmission lines will traverse either public land or follow corridors agreed between Solomon Power, the community and land owners (which is consistent with current Solomon Power policy to ensure no involuntary impacts on land or assets). No compulsory acquisition will be undertaken for the transmission lines. Public land will be used preferentially where feasible. Where customary land is required, the land will be retained as customary land to the greatest extent possible and Solomon Power will obtain use rights by consent to construct and maintain lines in lieu of registering and transferring land ownership.

Screening criteria for the water supply sub-components, including voluntarily provided access to land for the purposes of constructing the facility are prerequisites to inclusion of the subproject in CBSP.

Land use procedures are found in Annexure B, which include a protocol for voluntary land donations and the principles and procedures for managing and verifying other land acquisition arrangements.

Solomon Islands' law on land access and the World Bank's OP 4.12 are summarized in Annexure A. The gaps in the national law that are addressed by this ESMF in order to comply with the World Bank's OP4.12 are summarized in the table below.

Table 4 - Analysis of OP 4.12 and Solomon Islands Law

Provision of OP 4.12	Solomon Islands Law	Addressed in ESMF
Requirement to avoid or minimize impacts of economic displacement	No requirement to avoid or minimize impacts	Siting of infrastructure to avoid or minimise economic displacement (see 6.2.1 and 6.3.3)
Meaningful consultation and free, prior, and informed consent is obtained	Access to customary land to carry out water supply works requires the consent of customary landowners under custom (recognised by the Constitution). Prior consent not required for transmission line construction activities by Solomon Power under the <i>Electricity Act</i>	Free, Prior and Informed Consent for land access will be required in accordance with Annexure B.
Compensation and assistance for land and resource acquisition, restricted access to land and resources, and loss of livelihood	Appropriate payment for land access to be determined with customary leaders under custom Compensation to be paid for any 'damage' caused by the transmission line construction and maintenance under the <i>Electricity Act</i> . This will include damage to resources as well as land. Does not include specific provisions for loss of livelihood	Entitlement matrix provides for compensation and assistance for loss of resources and livelihoods. Voluntary land access to be provided free of charge for local infrastructure.

A time-bound plan setting out assessment of losses and impacts, consultations, compensation process and schedule is to be prepared	No time-bound plan required	Entitlements Matrix and Implementation Schedule set out a time bound plan for assessment of losses and impacts, consultation requirements compensation process and schedule
Recognizes non-titled persons as eligible for compensation (for structures, crops, trees, etc.) and land in some cases	Land access under custom recognises customary owners (non titled persons) as eligible for compensation payments. Compensation ordinarily shared between owners of land and owners of assets though unregulated. Compensation payable under the Electricity Act to anyone affected, including non-titled persons, asset and land owners	Entitlement Matrix recognises non-titled persons as eligible for compensation
RP must be satisfactorily implemented (compensation paid, livelihood assistance measures commenced and monitoring undertaken) prior to any changes in land title	No changes to land title anticipated. Land to remain as customary land. No requirement under Electricity Act to pay compensation before construction commences	Resettlement measures to be completed before construction commences under Implementation Schedule
Compensation to be paid proactively to land/ resource owners (including individuals or groups) based on identification in an inventory –as of certain date.	Timing of compensation payments under custom will depend on the terms of the agreement reached with landowners Under the Electricity Act, compensation not paid proactively but upon submission of a claim	Compensation to be paid proactively on the basis of identified inventory. See Implementation Schedule.
Valuation of land and resources based on replacement cost at current market prices	Valuation of land and resources under custom will depend on the terms of the agreement reached with landowners Electricity Act provides no guidance as to valuation but provides for the Court to determine appropriate valuation in case of any dispute	Where cash compensation paid, Entitlements Matrix provides for replacement cost at current market prices, and provides for replacement assets as priorities where possible
Special identification of and measures to be provided for “severely” affected households	No differentiation made for magnitude of losses, no additional measures required	Due to minor nature of construction impacts for water supply and linear

(i.e. those losing 10% or more of productive assets)		transmission line, no households are anticipated to lose 10% of more of productive assets. For abundant caution, measures for severely affected households included in Entitlements Matrix
--	--	--

5.2 Solomon Islands Regulatory Requirements

This section provides a brief overview of the specific policies in relation to environmental and social safeguard applicable to the preparation and implementation of this project.

Table 5: Relevant policies or regulatory framework

Act	Main Objectives
<i>Environment Act 1998</i> and <i>Environment Regulation 2008</i>	<p>The Environment Act 1998 and the Environment Regulation 2008 require development consent for prescribed activities to be obtained from the Ministry of Environment, Climate Change and Disaster Management (MECDM). A development consent application must include an environmental assessment which complies with Environment Act and Environment Regulations requirements.</p> <p>Prescribed activities include ‘irrigation and water supply schemes’ as well as public works ‘infrastructure development’. The Director of the Environment and Conservation Division will request an Environmental Impact Statement for projects with more significant impacts on the environment and a Public Environment Report for projects with more minor impacts.</p>
<i>Labour Act 1978</i> and <i>Employment Act 1981</i>	<p>The Labour Act deals with employment of workers. Part IX care of workers, requires the employer under:</p> <ul style="list-style-type: none"> • Article 65: to provide workers with rations. • Article 66: to protect workers and dependents from malaria • Article 67: to provide workers with an accessible supply of clean, non-polluted water for drinking, washing and for other domestic purposes. Water supplies may be inspected by a Health Officer. • Article 68: requires the employer to make sufficient and proper sanitary arrangements for workers. • Articles 69: requires employer to provide accommodation for the worker and his family if they are not conveniently located to the work place.

Act	Main Objectives
	<ul style="list-style-type: none"> • Article 70: requires the employer to provide medical care at the workplace • Article 71: states that depending on the circumstances the employer may be required to provide medical facilities <p>The Employment Act contains provisions relating to insurance for injury or illness for employees, employment contract requirements, redundancy, long service leave payments and dismissal.</p>
<i>Safety at Work Act 1996</i>	<p>This Act consists of 4 parts.</p> <ul style="list-style-type: none"> • Part II: Article 4 states that it is the duty of every employer to ensure the health and safety at work of his employees. • Article 6: states that it is the duty of the employer to provide a safe workplace for persons other than his employees. • Article 7 and 8: requires manufactures, supplier of tools and equipment, and suppliers of chemicals and other hazardous substances to ensure that these are safe and without health of risks. • Article 12: states that any employer who operates unsafe machinery or substances and is injured will be responsible for the damages. • Part III: Article 15 requires the employer to protect people from dust, fumes, etc. Article 16 provides for limits of exposure to dust and fumes. • Article 17, 18, 19 and 20 require employers to comply with the operating requirements for: (i) pressure and vacuum systems, (ii) machinery; (iii) dangerous machinery, and (v) electrical installations. • Article 21 and 22 require workplace to have fire protection and to take precautions against explosions.
<i>River Waters Act 1973</i>	<p>The Act establishes activities in prescribed rivers for which permits are required. These rivers will likely include some of the rivers in which water supplies may be installed.</p>
<i>Land and Titles Act 1988</i>	<p>The Land and Titles Act provides laws relating to the tenure of registered land, the transfer of interests in land and the compulsory acquisition of land. Part V of the Act deals with the conversion of customary land rights into registered title rights, and provides a process for the purchase or lease of such land by private treaty or compulsory acquisition.</p> <p>Where land is acquired by compulsory acquisition, article 12 of the Constitution allows the compulsory acquisition of customary land</p>

Act	Main Objectives
	<p>only where additional safeguards are met. Negotiations must take place with owners before acquisition, owners must be provided with access to legal advice, and the interest in the acquired land shall be limited to a fixed-term interest where possible. (Details of the legislation concerning land use and acquisition are found in Annexure A).</p> <p>For public works, including roads, customary land is not usually registered and acquired under the Act. In these cases, the use of customary land is negotiated with landholding groups through an extensive period of consultation before the signing of a Memorandum of Understanding (MOU). The MOU contains provisions to permit the construction and use of public infrastructure on customary land.</p>
<i>Electricity Act 1996</i>	<p>The Electricity Act establishes the Solomon Islands Electricity Authority (now branded as Solomon Power) as a state owned enterprise.</p> <p>The Act provides Solomon Power with the right to purchase, lease, gift or exchange land, by agreement, for the purpose of exercising its functions.</p> <p>The Act also provides Solomon Power with the authority to enter onto any land, and construct, maintain and repair lines, provided that prior notice is given to anyone affected and consultations are conducted with relevant parties.</p> <p>The Act also provides a grievance redress mechanism whereby any person who sustains any damage or loss by reason of the exercise of any of these powers may make application for compensation in writing.</p>
<i>Provincial Government Act 1997</i>	<p>The Act gives power to the provinces to make their own ordinances including ordinances relating to environment and conservation. Schedule 3 of the Act provides a list of activities for which the provinces have rights to pass ordinances.</p>

5.3 International Agreements

Solomon Islands is a party to many Multilateral Environmental Agreements (MEAs) that commit the country to numerous obligations for safeguarding the environment and the sustainable utilization of the resources therein. Two significant MEAs which are signed and ratified or acceded to by Solomon Islands are referred to below.

Convention on Biological Diversity (CBD)

Solomon Islands has received assistance from the Global Environment Facility (GEF) for a number 'enabling activities' under this convention. One of the main requirements of the convention is the development of a national biodiversity strategy and action plan (NBSAP). Solomon Islands is also a party to the Biosafety protocol, which is the protocol of the Convention to date.

The Stockholm Convention on Persistent Organic Pollutants (POPs)

Solomon Islands has carried out some inventories of persistent organic pollutants prior to the adoption of the convention, as part of a region wide assessment programme. An enabling activity programme which will produce a national implementation plan is yet to be finalized. The focal point for the convention is MECDM.

6. SOCIAL AND ENVIRONMENTAL MANAGEMENT FRAMEWORK

The CBSP has been classified as Environmental Category A in accordance with World Bank Safeguard Policies. This ESMF is a tool for CBSP to avoid, mitigate or address the potential social and environmental impacts and risks associated with the proposed investments. The CBSP will not finance activities that may cause adverse unmanageable socio-environmental impacts.

6.1 Component 1 Impact Management – Benefit Share Fund Design

The *design* of the benefit share fund is not anticipated to have any direct environmental impacts (see section **Error! Reference source not found.**) and an environmental management framework is not required for this component. It is not proposed to prepare a framework for assessing and mitigating potential consequential environmental impacts of the *implementation* of the benefit share fund, as the fund governance structure and potential funding activities will not be designed until the completion of this component. For example, it is not yet known whether the fund will sponsor any construction activities.

Potential social impacts of Component 1 are identified in section **Error! Reference source not found.** Public consultations undertaken with the community and NGOs (see section **Error! Reference source not found.**) reinforce that managing these risks will be central to the design of a successful benefit share fund. While a detailed framework to manage these risks will be the responsibility of the Benefit Share Coordinator, Deputy Coordinator and consultants through the benefit share fund design, feedback proposes that ongoing consultation will be crucial to achieving the ownership, strong governance and community acceptance necessary for a successful fund. Consultations on the fund design are to include:

- Community Liaison Assistants;
- Community focus groups including chiefs and leaders, as well as women's only sessions;
- Public awareness meetings;
- Local and international NGOs; and
- Relevant Government Ministries.

6.2 Component 2A Impact Management: Water Supply

Component 2A will consist of approximately nine sub-component priority investment water supply projects. These projects are predominantly gravity fed water supply systems with some use of bore

holes and water tank storage. Where power is required to pump from boreholes or storage tanks, solar pumps are proposed backed up by diesel generators. The initial priority investment list set out in Annex 4 to the CBSP Operating Manual will be reviewed and validated in consultations with stakeholders.

This social and environmental management framework sets out safeguard requirements for the detailed design of the priority projects, and their construction and operation.

The ESMF introduces four broad steps for the management of impacts and risks in Component 2A. Table 6 below summarises the proposed timing and implementation responsibilities of the procedures, based on the community-driven development processes used by the Rural Development Program.

Careful budgeting will be essential to ensuring that all commenced construction work is completed. Unmet community expectations was raised as a significant concern in community and NGO consultations. Before Step 1 commences, a budget will be prepared to ensure that sufficient funds exist for all proposed works. Following site assessment and final design work, detailed budgets shall be prepared to ensure that sufficient funds are available to complete work before construction commences, including an appropriate contingency amount.

Table 6– Safeguard procedures for Rural Water Supply

No.	Step	When to implement	Who to implement
1	Site assessment, consultation, and screening for impacts and risks	Detailed site selection	TRHDP PO: <ul style="list-style-type: none"> - Community WASH Specialist - Community Benefit Sharing Coordinator Environmental and Social Safeguards Officer (Community Liaison Officer)
2	Select mitigation measures	Community consultation and selection of technology options	TRHDP PO: <ul style="list-style-type: none"> - Community WASH Specialist - Community Benefit Sharing Coordinator - Environmental and Social Safeguards Officer (Community Liaison Officer)
3	Implement mitigation measures	Design	WASH Contractor Benefited communities TRHDP PO: <ul style="list-style-type: none"> - Community WASH Specialist - Community Benefit Sharing Coordinator

No.	Step	When to implement	Who to implement
			- Environmental and Social Safeguards Officer (Community Liaison Officer)
		Construction	WASH Contractor
		Operation	Benefitted communities
4A	Monitoring, supervision	All stages from engineering design to operation	TRHDP PO: <ul style="list-style-type: none"> - Community WASH Specialist - Community Benefit Sharing Coordinator - Environmental and Social Safeguards Officer (Community Liaison Officer) Benefitted communities
4B	Reporting	All stages from engineering design to operation	TRHDP PO: <ul style="list-style-type: none"> - Community WASH Specialist - Community Benefit Sharing Coordinator - Environmental and Social Safeguards Officer (Community Liaison Officer)

6.2.1 Step 1 – Site assessment and impacts and risks assessment

The purpose of site assessment is to record the characteristics of each of the water supply sub-component sites and assess the related social and environmental issues and risks that the sub-component will face during its construction and operation phase.

Site assessment and impact screening will involve close consultations with members of the community. As raised in community consultations, this step shall involve the existing Water Supply Committee for the TRHDP which was established in 2010/2011.

Each sub-component may incorporate a number of sites, for example, a gravity feed system may involve a site at a river or stream, a pipeline, standpipes or connections to a school or clinic. In these cases the site assessment form should incorporate a map noting locations of identified risks.

Initial site assessment will be undertaken before the pre-construction workshop detailed in the Operating Manual. The assessment will inform discussions with stakeholders at consultation meetings including the pre-construction workshop.

The potential impacts and risks identified will be based on site characteristics, the types of physical activities to be carried out during construction phase, and the operational features of the initial water supply design for that sub-component. These will inform the mitigation measures to be proposed in Step 3.

Solomon Islands Community Benefit Sharing Pilot (CBSP) Project

FORM 1 : SITE ASSESSMENT

Filled in by the Community WASH Specialist and WASH Contractor

Forms shall then be reviewed by the Community Benefit Sharing Coordinator of the TRHDP PO and the Environmental and Social Safeguards Officer (Community Liaison Officer)

Sub-component project name and brief description:

Location Area (attach map):

Observe the sites and answer the questions below:

	Questions	Yes	No	Notes/Comments
1. accessibility, Topography	A. Is the site on a slope or in a hilly area made of soft/loose formations that has high erosion/ landslide potentials?			
	B. Are surroundings of the site vulnerable to erosion or landslide risks that may affect the stability of the facility to be built?			
	C. Is the project site located in flood plain areas or in located in area at low elevation above sea level so as it is at risk of inundation in the long term?			
	D. Is the existing ground level lower than historical flood level?			
	E. Is the ground where construction will take place lower than the surrounding such that rain water may concentrate and cause flooding easily?			
	F. Is it safe and easy to access the site in rainy weather			
	G. Others (specify)			
2. Biology	A. Is there any vegetation cover that may be disturbed or cut down? Describe.			
	B. Is the site located on any crop land?			
	C. Are there any food trees on the site?			

	D. Is it possible that any wildlife or insects that may attack human such as snakes, bees, fire ants, etc. will be present at the site			
	Others biological characteristics to be noted (Specify)			
3. Climate, hydrology	A. Is the site located within 100 m from a river or stream bank, or within 50 m from a log pond?			
	B. Has the area undergone severe drought in the most recent five years			
	C. was the area severely affected by thunderstorms and lightening before			
	D. Have earthquakes happened in this area before?			
	E. Others climatic characteristics to be noted (Specify)			
4. Culture	A. Are there any sacred trees, streams or other tambu sites that may be affected?			
	B. Is there any grave within 50 m from the site			
	C. Are there any other objects/structures of spiritual importance to local communities that may be affected by construction or operation phase?			
	D. Others cultural characteristics to be noted (Specify)			
5. Existing facilities	A. Are there existing natural drains at the site?			
	B. Are there any existing water pipes crossing the site			
	C. Is there existing road that may be excavated or damaged during construction			
	D. Are there any animal cages within 10 m from the site			
	E. Are there any houses within 20 m from the site?			
	F. Others existing infrastructure to be noted Specify)			
6. Natural Resource	A. Will the use of water, energy during construction and/or operation phase cause restriction access to some communities			
	B. Others natural resource characteristics to be noted (Specify)			
7. Land	A. Is inadequate consultation with owners of customary land resulting in their lack of understanding about the terms and conditions of the donation?			

	B. Are landowners reluctant to allow the use of the land for the construction of water supply system?			
	C. Could the landowners possibly be subject to political or social pressure and coerced into making the donation?			
	D. Significant disputes as to customary land ownership noted? Are these likely to affect the project?			
8. Location	Photos taken at the site to demonstrate the conclusions made on Y/N Locations of identified risks marked on map			

6.2.2 Step 2: Impacts and Risks Screening

Screening should be carried out soon after site assessment has been done. Screening for impacts should take into account the site characteristics noted in the site assessment form

The information recorded in Forms 2 and 3 are necessary to identify site-specific issues and risks so that mitigation measures can be identified and incorporated in Step 3.

The impact screening form should be started before the pre-construction workshop and finalised following any feedback from the community as part of that workshop.

Community Benefit Sharing Pilot Project **FORM 2 : IMPACTS SCREENING** Filled in by the Community
WASH Specialist and WASH Contractor

Forms shall then be reviewed by the Community Benefit Sharing Coordinator of the TRHDP PO and the Environmental and Social Safeguards Officer (Community Liaison Officer)

This form should be completed following the site assessment.

Sub-component project name and brief description:

Location Area (attach map):

Subject	Screening Questions	Yes	No	Comment
CONSTRUCTION PHASE				
	<i>Will the water supply project:</i>			(guidance are given below)
1. Vegetation cover, trees, insects, animal	Remove vegetation cover, cut down trees for timber or site clearance?			<i>Specify the number and the type of trees to be cut down</i>
	Clear any part of a garden or clear food trees?			
	Produce waste or divert water that affects a garden?			<i>Assess if waste and wastewater generated during construction affect existing crops</i>
	Disturb wildlife, insects such as snakes?			
2. natural resources	Be located near forest or least disturbed /nature reserve area?			<i>Estimate the distance and type of forest</i>
3. Landscape	Cause significant changes to, or negatively affect the landscape of the area?			<i>Describe the nature of change, e.g. from green site to concrete/ wooden structures, dumps created in green area,</i>
4.Solid waste	Generate solid waste such as excavated soil, unused materials			<i>List the type (and quantity if possible) of solid waste potentially generated</i>
5. Hazardous wastes	Generate hazardous waste such as batteries, unused paints, oil, lubricant etc.			<i>List the type (and quantity if possible) of solid waste potentially generated</i>
6.Wastewater	Generate wastewater from the site? e.g. lubricant etc.			<i>List the types of activities (eg. concrete mixing, tools washing etc.) that may generate waste water and quantity.</i>

7.Dust and smoke	Cause increased dust level at the site, or generate smoke			<i>Identify the sources, e.g. barren soil, disturbed ground, solid waste dumped at the sites, sand, gravel loaded at the site etc.</i>
8.Noise and vibration	Generate high noise and vibration			<i>Identify the sources, e.g. drilling, pile driving, steel/timber cutting and the time that noise/vibration lasts Describe the distance from the nearest house to noise sources</i>
9. Erosion risks	Disturb slopes			<i>Describe the construction site, status of vegetation cover and the level of interference by the project. Consider rainfall during construction phase</i>
10. Water quality	Cause water pollution by construction waste, soil run-off, or disturbance to stream or river bed?			<i>Estimate the type and quantity of water impact, the distance from construction site to the nearest water bodies and topographical condition</i>
11. Local flooding	Increase localised flooding risk			<i>Describe site topographical condition and drainage</i>
13. Social disturbance	a. Disrupt local traffic/ transportation/ pedestrian traffic			
	b. Disrupt the operation of any other local water supply system			
	c. Disrupt the operation of any other local irrigation system			
	d. Disrupt the operation of any local drainage system			
	e. Disrupt local farming activities			
	f. Disrupt community meetings/social events			
	g. Affect community security?			
14. Safety to community	Cause safety risk to community			<i>List the activities/circumstance that may cause safety risks to local community</i>
15. Public health	Cause concerns for public health/ sanitation /hygiene in local community			<i>Describe the nature of the activities that may cause health risks or create unhygienic conditions in project area. Consider creation of muddy areas or pooled</i>

				<i>water contributing to mosquito breeding</i>
16.Worker's health & safety	Cause workers health and safety concerns			
17.PCR	Impact cultural sites such as church, historical site, grave yard, tambu site etc.			
18. Community support	Absence of broad community support			
19. Sustainability	Absence of a community plan for the management and maintenance of assets after implementation?			Management Plan to accompany application for funding
20. Land	Lack of clear ownership of the land/ lack of written agreement by landowners for the use of land for the project through adequate consultation/ unresolved disputes as to the ownership of land			Follow Land Use Procedures (Annexure B)
OPERATIONAL PHASE -				
1. Public Health	Cause concerns on public health/ sanitation /hygiene in local community including localized flooding, muddy areas or water pooling which may facilitate mosquito breeding			
2. Nuisance/Hygiene	Cause any nuisance or hygiene concerns to nearby land uses or houses, including with respect to the location of pipelines, tanks, toilets and standpipes			
4. Public Health	Cause any other public health risks?			
5. Water Quantity	Withdraw groundwater in coastal areas that may lead to the risk of salinity intrusion?			
6.Water Quantity	Extract or use large amount of water in local river/streams that			

	may cause shortage to water supply to other users in the locality?			
7. Water Quality	Cause water pollution, including through the leakage or discharge of generator fuel?			

6.2.3 Step 3: Select Mitigation Measures

With the potential impacts and risks identified in step 2, a set of mitigation measures and environmental solutions can be identified to address these impacts.

The mitigation measures and environmental solutions can be implemented at various stages. These include specific site selection, engineering design, construction and operation.

The stakeholders responsible for implementing the mitigation measures at each stage will include:

- The WASH Contractor, overseen by the Community WASH Specialist, under the direction of the Benefit Share Coordinator and the Environmental and Social Safeguards Officer will be responsible for incorporating the proposed mitigation measures and environmental solutions into technical designs and implementing the mitigation measures.
- The benefited community may be required to implement some mitigation measures at pre-construction or during construction phase. These benefited communities will be responsible for implementing most of the mitigation measures during operation phase, including ensuring proper operation and regular maintenance of the works provided by CBSP and the Benefit Sharing Fund.

Community Benefit Sharing Pilot Project FORM 4 - ENVIRONMENTAL SOLUTIONS AND MITIGATION MEASURES
 Filled in by the Community WASH Specialist and WASH Contractor

Forms shall then be reviewed by the Community Benefit Sharing Coordinator of the TRHDP PO and the Environmental and Social Safeguards Officer (Community Liaison Officer)

This form should be completed following site assessment and impact screening

Sub-component project name and brief description:

Location Area (attach map):

A = Applied N/A = not applicable in this small scale investment project. When a solution/mitigation measures is proposed, associated costs should be estimated and incorporated into the total cost of the small scale investment project

I -DESIGN PHASE

	Issue	Environmental /Design Solutions	A	N/A	Costed (Y/N)
ALL FACILITIES UNDER COMPONENT 1	Landslide, erosion	Re-siting the facility to avoid erosion/landslide risk			
		Landscaping, re- shaping slopes to reduce landslide risks			
		create vegetative cover			
		Stabilise with concrete structure or combined with grass			
		Others (specify)			
	Flooding, proximity to existing water bodies	Re select the site to avoid flooding hazard; avoid pollution caused to water bodies from waste and wastewater generated during construction and operation phases			
		Elevate the floor of the building above the existing ground			
		Improve existing drains			
		Build new drains surrounding the facility			
		Elevate the ground before construction			
		Others specify			
	Access- sibility	Build safe access for users/operators			
		Others (specify)			

	Trees, objects	Avoid through refining site-selection to avoid trees cutting or cultural objects			
		Others specify			
	Disrupt existing facilities	Relocate the waste pipes/drainage channel			
		Reinstate road surface			
		Build alternative drain			
		Design gas exhaust pipe, waste bins, toilets, wastewater discharge points away from residential houses and other areas which may cause nuisance or sanitation risk			
		Others (specify)			
BUILDINGS only	User friendly				
		Maximise natural lighting inside and outside			
		Others (specify)			
	Environmentally sound				
		Drainage within and/or surrounding the building or structure			
		Options for solid waste collection and disposal			
		Use locally available renewable materials			
		Use local labour for simple manual work			
		Outer design fit with the surrounding landscape			
		There is space designed for planting trees, plants and flowers by communities			
		The building insulated from solar heat with locally available renewable materials, such as palm leaves?			
		Others (specify)			
PIPED WATER SUPPLY only	Headworks, elevated tanks	Borehole is located away from sanitation facilities, animal cages, and any other source that may cause groundwater pollution			
		Water quality is tested in laboratory for water quality testing:			

		<ul style="list-style-type: none"> - The National Public Health Laboratory NPHL - Solomon Islands Water Authority SIWA 			
		Designed extraction rate is appropriate, taking into account environmental flow for down streams and other unconnected water users			
		Surface water collection basin is covered with lid to prevent debris, leaves, etc. from entering the chamber			
		Collection chamber has walls for sand to settle before water entering the outlet			
		Design safe access to head work is provided to operators			
		Safety warning and water saving signs attached to the source work			
		Signboards with message of saving water, protect water sources for sustainable usage placed at public places			
		Others (specify)			
	Pipes	Apply measures for erosion control where pipes passing high slopes			
		Apply measures to minimise flood damage where the pipeline encounters water courses or flood paths apply measures to minimise flood damage where the pipeline encounters water courses or flood paths			
		Apply measures to stabilise the pipes where topography or soil condition changes			
		Trenches are refilled after pipes are laid			
		Ensure that pipeline materials do not contain asbestos concrete or lead			
		Others (specify)			
	Taps	Dimensions of concrete apron is adequate for water collection and on-site washing			
		Adequate drainage to ensure no ponding or stagnant wastewater at the surroundings			
		Protected to prevent access of pigs, chicken etc. to cause pollution and damages			

		Others (specify)			
	Ancillary works	lightening protection for tall structure such as elevated water tanks			
		Others (specify)			
RAINWATER TANKS only	Environmentally sound, user friendly	Filter/screen placed at entry point to prevent litters coming into the tank			
		Drainage for the areas where users' containers are placed			
		Space designed for planting trees, plants and flowers by communities			
		The top/lid is closed to prevent mosquito breeding and leaves, debris flying in			
		Signs saying "save the water" or "every drops count", or equivalent signs relevant to the area should be placed at the tank			
		Has discharge valve at the bottom for periodical cleaning			
		Others (specify)			
SANITATION	User friendly	Design is safe and convenient access, particularly for the children and disabled persons?			
		Ground elevation above regular flood level			
		Outer design fit with the surrounding landscape			
		Separate rooms for men and women			
		Design takes into account a washing and drying area for menstruation sanitation in accordance with community consultations			
		Others (specify)			
	Odour, waste and waste water management	Has window for odour dispersion and sufficient natural light at day time			
		Effluent discharge point of the septic tank is at least 20 m from any existing surface water bodies			
		Effluent discharged either to a sub-surface soakaway or leach field, or to an oxidation pond or constructed wetland, not left uncontrolled to open ground			

		The outlet point on the ventilation pipe is high enough to maximise dispersion of bad odours			
		Paper bin is provided			
		System for removal of solid waste provided			
		Others (specify)			
	maintenance	There are manholes for inspection and maintenance of septic tanks			
		Floor and walls paved with tiles for easy cleaning			
		Water facilities for hand washing are included			
		Personal hygiene signs attached to the building to promote proper personal hygienic practices			
		Others (specify)			
	Land	Use of any customary land for project has followed land use procedure set out in Annexure B (Land Use Procedures)			

CONSTRUCTION PHASE

II MITIGATION MEASURES FOR CONSTRUCTION PHASE – ECO

Issue/Risks	Codes of Practices to address the potential Issues/Risks		Yes	No	Carried out by
1. Disruption of vegetative cover, tree cutting (V)	V1	Store topsoil from excavated area for vegetation planting/ reinstatement at the end of construction			
	V2	Only cut trees and remove vegetation in areas specified in the design.			
	V3	Keep the area of vegetation removal minimal. Avoid loading the pipes, timbers, construction tools on vegetated areas. Place them on barren soil			
	V4	Restore vegetation cover on barren soil at the end of construction			
	V5	Plant native trees to compensate for trees logged for timber used in the small scale			

		investment project or create vegetation cover			
	V6	Refill excavated areas and cover with top soil for vegetation cover to regenerate			
		Others (specify)			
2. Affect natural/ ecological resources (E)	E1	Erect temporary fences to protect the preserved trees before commencement of any works within the site.			
	E2	Do not disturb (e.g. logging, hunting, catching, shooting, poisoning, littering) breeding ground of fishery resources such as swamp/lagoon/sea grass bed, mangrove areas, or grassland seasonally inundated, or any area that is protected as a green space.			
	E3	Only either timber provided by the local community or use legal timber for construction by requiring the supplier to show a certificate for timber			
	E4	Only use local native species of vegetation for planting and restoration of natural landforms			
	E5	Do not dig excessive amounts of sand, gravel or rocks from rivers for construction.			
	E6	Do not extract materials from live coral reef for construction materials.			
		Others (specify)			
3.Landscape management (L)	L1	Maintain vegetation cover where possible			
	L2	Implement good waste management practices			
	L3	Cover construction waste with top soil for planting trees/flowers			
4. Solid Waste Management (S)	S1	Provide waste bins for litter/garbage and refuse collection. Waste bins shall be covered, tip-proof, weatherproof and scavenger proof.			
	S2	Do not burn waste on-site			
	S3	Store solid waste temporarily on site in a designated area approved by the Work Supervisors			
	S4	Dispose of construction waste only in areas approved by local community/authorities			

	S5	Do not dispose of any material in environmentally sensitive areas such as swamp/lagoon/sea grass bed, mangrove areas, or grassland seasonally inundated, or any area that is protected as a green space in watercourses.			
	S6	Reuse recyclable materials where possible. Materials such as wooden plates, steel, scaffolding material, site holding, packaging material shall be collected and separated on-site from other waste sources for reuse, for use as fill or provided to recycling vendors.			
		Others (specify)			
5.Wastewater (W)					
	W1	Workers to go to the toilet away from any water bodies.			
6. Chemical or hazardous wastes (H)	H1	Do not use materials containing asbestos for construction			
	H2	Handling of asbestos-containing materials and other toxic substances is only to be carried out by specially trained and certified workers			
	H3	Collect used oil, lubricants, cleaning materials, etc. in holding containers.			
	H4	Store chemicals with appropriate labelling and signboards			
		Others (specify)			
7. Dust (D), Air quality (A)	D1	Ensure dust generated from construction activities is minimal and at acceptable level			
	D2	Spray water in dusty area in dry weather			
	D3	Cover material stockpiles			
	D4	Cover trucks carrying granular materials			
	D5	Stop construction and spray the site when there are complaints about dust			
	A1	Vehicles used must comply with SI regulations on allowable emission limits of exhaust gases			
	A2	Do not burn waste on-site			
	A3	Drivers must turn engines off if vehicle is idle for more than 5 minutes			

		Others (specify)			
8. Noise (N)	N1	Install silencers/mufflers on exhaust of noisy machines in acoustically protected areas			
	N2	Dampen concrete/roads before cutting			
	N3	Avoid construction activities before 6am and after 6pm			
	N4	Inform local communities at least two days before construction takes place during early morning and/or late at night			
		Others (specify)			
9. Erosion (R), Siltation/ Sedimentation (Se)	R1	Design slope stabilisation solutions if the works are to be built on slopes			
	R2	Provide permanent drainage structure if the works is on a slope			
	R3	Include energy-dispersion structures in drainage system			
	R4	Avoid excavation works during wet season			
	R5	Keep ground clearance area to minimal levels possible			
	R6	Reinstate vegetation cover at earliest opportunity			
	R7	Carry out shaping and re-profiling cutting of slopes to minimise erosion potential			
	R8	Replant trees on exposed land and slopes to prevent or reduce land collapse and keep the stability of slopes			
	Se1	Maintain drainage system to ensure they are free of mud and other obstructions			
	Se2	Maintain original condition of undisturbed area at construction sites			
		Others (specify)			
10. Water Quality (Wq)	Wq1	Avoid ground disturbance near water sources			
	Wq2	Design and install sediment traps to collect sediment from rainwater before surface flow enters water bodies			
	Wq3	Do not wash tools in streams, rivers or lakes			
	Wq4	Do not dispose of construction materials and waste in water bodies			

	Wq5	Follow chemical management instruction (Coded H) to prevent chemical leaks into water bodies			
		Others (specify)			
11. Localised flooding (F)	F1	Maintain existing drainage if possible			
	F2	Create drains surrounding material loads stored at the work site			
	F3	Periodically clean up drains at the site			
12. Disturbance to cultural sites (C)	C1	At least one person with construction team to know the location of any tambu sites in or near the construction area. No works to impact tambu sites.			
	C1	Avoid unloading materials, parking vehicles/construction plants, within 20 m of any cultural site. If this is unavoidable, the unloading/parking should be finished within 3 hours			
	C2	Spray water regularly if construction is near any cultural structure			
	C3	Chance Find Procedure: detailed in Annexure E of ESMF			
		Others (specify)			
13. Social disturbance (applies as required to all actions under ECOPs)	Sd1	Inform community at least one week before site clearance is started			
	Sd2	Maintain open communications with the provincial government and concerned communities (erect notification boards in local language/s at construction sites providing information about the project and contact numbers) Respond to telephone inquiries and written correspondence in a timely and accurate manner Monitor community concerns and information requirements as the project progresses			
	Sd3	Coordinate with local authorities (leaders of local wards or communities, leaders of villages) for agreed schedules of construction activities at areas near sensitive places or at sensitive times (e.g. religious and/or festival days).			
	Sd4	Inform local residents about construction and work schedules, interruption of services and demolition where applicable			

	Sd5	Investigate and implement alternatives to avoid the use of playground space and loss of playing fields for construction sites Carry out consultation with those affected as early as possible if it is not avoidable to use these sites			
	Sd6	Reinstate all disturbed areas including roads			
		Others (specify)			
14. Public Health (P)	P	See specific measures relevant to various types of small scale investment projects			
15. Worker and public Safety (Sa)	Sa1	Install fences, barriers, dangerous warning/prohibition signs around significant construction areas			
	Sa2	Implement traffic control measures, including road/rivers/canal signs and flag persons to warn of dangerous conditions			
	Sa3	No children allowed to be around during excavation, installation of structures particularly bulky items			
		Others (specify)			
16. Occupational Health (O)	O1	Use relevant protective gear while working			
		Others specify			

III OPERATIONAL PHASE – BENEFITED COMMUNITY’S RESONSIBILITIES

Issue	Mitigation measures	Yes	No
Materials/ Timber used	Reinstate vegetation cover		
	Others (specify)		
Operation	Training on proper use and operation of the facility provided		
Cleaning, maintenan ce	Regular cleaning of facilities including drains		
	Maintain facilities and replace broken parts/pieces if technically feasible		
	Others specify		

6.2.4 Step 4: Monitoring and supervision and reporting

Step 4A: Monitoring and supervision

Monitoring, supervision and reporting should be carried out during the design and construction phase to ensure that the potential impacts and risks are avoided, mitigated or addressed on time. Timely monitoring and supervision allows the project proponent to timely address any issues arisen during construction/operation phase. Monitoring also helps to draw lessons for future similar small scale investment projects.

The three forms set out above are to be reviewed and signed off by the Social and Environment Safeguards Officer once completed. Any concerns raised by the Officer are to be brought to the TRHDP Deputy Manager for resolution.

Step 4B: Reporting

All finalised monitoring information shall be recorded and stored. This information shall be made available to the assessment team as part of Component 4 of the Project.

6.3 Component 2B Impact Management: Rural Electrification

Component 2B consists of the extension of high voltage power lines. The priority for this project is the extension of the 11KV transmission line into the area of Bahomea, and to provide connections to priority areas and buildings. Transmission line extensions will also be constructed into Malango if funding permits.

The transmission line corridor route and priority target areas for electrification have not yet been finalised. Solomon Power will conduct an environmental and social impact assessment of the route and household connection components of the project. Public work infrastructure projects constitute prescribed activities within the meaning of the Solomon Islands' *Environment Act*. As such, Solomon Power's environmental and social impact assessment shall be submitted to the Director of Environment at the Ministry of Environment, Climate Change, Disaster Management and Meteorology for review and approval. The *Environment Act* and *Environment Regulation* set out the legislative requirements for an environmental impact assessment. Solomon Power's standard ESIA outline is provided at Annexure G.

6.3.1 Construction Mitigation Measures

Mitigation measures for the key environmental and social risks set out in section 4.2.2 shall be incorporated into the ESIA. These mitigation measures are to include the measures set out below:

Dust: There are a number of good engineering practices that can be employed to ensure that dust and vehicle related air quality impacts are mitigated during construction. These include:

- Construction equipment being maintained to a good standard. The equipment will be checked at regular intervals to ensure they are maintained in working order and the checks will be recorded by the Solomon Power as part of environmental monitoring;
- Prohibition of the use of equipment and machinery that causes excessive pollution (i.e. visible smoke) at the project sites;
- Ensuring that all vehicles transporting potentially dust-producing material are not overloaded, are provided with adequate tail-boards and side-boards, and are adequately covered with a tarpaulin (covering the entire load and secured at the sides and tail of the vehicle) during transportation;

- Material stockpiles being located in sheltered areas and be covered with tarpaulins or other such suitable covering to prevent material becoming airborne; and
- Periodic qualitative air quality monitoring (by observation rather than testing).

Construction and demolition waste: Demolished materials and construction materials will be disposed of at designated site approved by Solomon Power. Solid wastes, debris, spent oil or fuel from construction machinery or plant, construction material, or waste vegetation removed from worksites will not be dumped in streams or near streams.

Impacts on noise level: As mentioned, during construction there will be temporary adverse impacts due to the noise of the construction equipment. The following general measures will be taken to mitigate the effects of noise:

- Solomon Power and/or the contractor will be required to maintain all vehicle exhaust systems and noise generating equipment in good working order and maintained regularly;
- Prohibition of any construction activities between 9pm and 6am in, or close to, residential sites;
- Solomon Power will prepare a schedule of operations that will be approved by affected stakeholders. The schedule will establish the days, including identifying days on which there should be no work, and hours of work for each construction activity and identify the types of equipment to be used;
- Workers will be provided with noise abatement equipment as may be required; and
- Any complaints regarding noise will be dealt with by the Solomon Power in the first instance through the redress grievance mechanism.

Impact on access: Mitigation of impacts on access will include:

- Care taken during the construction period to ensure that disruptions to access and traffic are minimized;
- Signs and other appropriate safety features will be used to indicate construction works are being undertaken; and
- Solomon Power will ensure access roads to privately owned land are not disturbed.

Impacts on health and safety: Observing general health and safety requirements, including supply of safety and protective gear and equipment to workers, to reduce the risk of accidents at the work sites. Mitigation measures for reducing and avoiding impacts on health and safety include:

- Provide construction workers training in health and safety issues, and on the specific hazards of their work;
- Provide workers with personal protection equipment, such as safety boots, safety glasses, reflector vests, helmets, gloves, and protective clothing;
- Provision of adequate protection to the general public in the vicinity of the work site, including advance notice of commencement of works, installing safety barriers if required and signage or marking of the work areas.

6.3.2 Land access mitigation measures

Solomon Power shall obtain land access rights for the construction and ongoing maintenance of the line with the consent of the landowners. These may take the form of either negotiated reliance on statutory rights under the *Electricity Act*, or registered easements under the *Land and Titles Act* (if

required and where land is already registered land).. Component 2B will not require freehold land acquisition and there will be no compulsory acquisition of land.

Existing road corridors owned by the Commissioner of Lands will be used for the transmission line corridor wherever possible to minimise impacts. Under Solomon Power's SOP, SP will send notification to Ministry of Infrastructure Development (MID) to get consent when grid extension activity will use road right of way and to avoid any encroachment to private land. Solomon Power will also work closely with the TRHDP PO to use the existing 50 metre corridor acquired along Black Post Road. The routing of the transmission line will avoid critical habitats, tambu sites, and other sacred or cultural sites.

Where any transmission line infrastructure is located on customary land, Solomon Power shall follow the customary land use procedure articulated in Annexure B (Land Use Procedures) with the assistance of the TRHDP PO, in conjunction with the process set out in the *Electricity Act*.

6.3.3 Livelihood mitigation measures

Livelihood assets will be avoided when selecting the location for the erection of transmission line poles. Solomon Power will conduct a survey of livelihood assets in the area of the proposed corridor route as part of the Environmental and Social Impact Assessment.

Any removal of livelihood assets including trees and gardens will require consultation with the asset owner. Solomon Power will provide compensation where requested, in accordance with the Ministry of Agriculture's compensation rates as updated under the TRHDP Land Acquisition and Livelihood Restoration Plan (LALRP) to reflect current market rates. For consistency with other components of the Tina Hydro Project, Solomon Power will use the Livelihoods Entitlement Matrix at Annexure C.

No residential dwelling will be relocated for the project unless no alternative feasible route alignment is available. Where a residential or other structure is moved, Solomon Power are to arrange compensation in accordance with the Livelihoods Entitlement Matrix.

Solomon Power's Standard Operating Procedure (SOP) for construction operations and damage mechanisms will be used for the Component 2B works.

6.3.4 Household and infrastructure connections mitigation measures

Household connections and wiring installations will be undertaken on demand or application from the applicant/consumer (household owner) and will incorporate a co-payment. The work and any minor impacts will be conducted with the consent of any household owner.

During the construction of household wiring the consumer will organise the access from the street boundary to the property boundary as well as from property boundary to the house, including trimming vegetation. The installation itself will be conducted by licensed service providers and any damage regarding auxiliary pole installation and household wiring will be handled by contractors and will be monitored by SP. The project must restore any damage to the previous status before the construction.

6.3.5 Operational Mitigation Measures

Awareness sessions will be held with affected communities immediately prior to electricity connection to discuss powerline safety and to demonstrate safe use of household electricity. This measure was raised and discussed in community consultations to address safety concerns surrounding the use of electricity.

Table 7: Responsibilities for Environmental Management and Monitoring

Project Stage	Responsible Organization	Responsibilities
Feasibility study and appointment	SP	<ul style="list-style-type: none">• Prepare ESIA including overall ESMP• Preliminary design
Feasibility study and project review and approval	Environment and Conservation Division (ECD) and SP	<ul style="list-style-type: none">• Review and approval of ESIA including ESMP• Provide inputs to monitoring requirements
Detailed design	SP	<ul style="list-style-type: none">• Prepare detailed design• Update ESMP based on specifics of detailed design• Submit updated ESMP to ECD for review
Construction	SP and/or contractor	<ul style="list-style-type: none">• Implementation and supervision of the ESMP• Audit construction phase through environmental inspections and review monitoring data• Preparation and submission of monthly environmental reports• Provide awareness/training to workers
Operation	SP	<ul style="list-style-type: none">• Provide budget to undertake long term environmental monitoring• Undertake environmental monitoring and prepare bi-annual reports

6.3.6 Monitoring and Reporting

Solomon Power as the project implementing agency will report progress to WB as set out in the Operating Manual. This report will include documentation of consultation for each project area, draft and approved ESIA, and a summary of complaints and outcomes and any incidents in relation to ESMF.

6.4 Component 3 Impact Management– Human Resource Development

No environmental impacts are anticipated for this component (see section 4.3). The potential social impacts of this component are set out in section 4.3. Mitigation measures for these impacts have already commenced. Extensive work has been done by the TRHDP PO to define the cultural areas of

Bahomea and Malango, to prepare registers of the membership of the 27 tribes in the area, and to build relationships with community representatives to monitor and verify these registers.

Mitigation measures to address indirect social impacts resulting from an increase in paid employment are set out in the TRHDP ESIA (available through the World Bank website). Measures include an alcohol ban on workers, awareness sessions on sexually transmitted diseases, and budgeting and money management training. The importance of the latter was reinforced in consultations with NGOs in light of the changes to family structures and household roles that paid employment can bring.

6.5 Component 4 Impact Management – Project Management

This component is not anticipated to have any social or environmental impacts in addition to those relating to the other components. As such no impact management is proposed.

6.6 Unexploded Ordinances (UXOs)

In addition to the measures set out above, Unexploded Ordinances may remain on land areas affected by components 2A and 2B.

The proposed project areas and alignments will be swept for UXO and if found will be cleared as per the established procedures before the site is ready for construction. Should UXO be discovered, the SP or contractor is to immediately cordon off the area, arrange the evacuation of nearby residences and inform the police on the finds. Currently all UXO finds are reported to the police who arrange the pickup, transport, storage and ultimate disposal of the finds. While construction sites are expected to be swept for and cleared of UXOs, a chance find procedure for handling the UXOs during the construction is included in the ESMF. The UXO Procedure is set out in Annexure F.

7. GRIEVANCE REDRESS MECHANISM

7.1 Grievance Procedures

CBSP will have in place a Grievance Redress Mechanism (GRM) that is designed to facilitate feedback from any project participant or stakeholder regarding project operations, management, use of resources and impacts of activities, intentionally or otherwise, and resolution of the same by project management, Government and/or the World Bank. In the event that any project stakeholder feels that the principles or processes of the project have not been adhered to or followed, or that resources have been misused or any person or persons have abused the process for personal gain, or that the Project is seen as harming households or community groups, then those stakeholders have the right to raise their concerns and to seek satisfactory acknowledgement and resolution of their grievances. This right is essential to ensure transparency and accountability. Stakeholders will be informed of the Project GRM through community meetings and project documentation.

Project documentation for the benefit share fund designed as part of Component 1 shall incorporate its own grievance redress mechanism for the activities of the benefit share fund.

7.1.1 Grievance Resolution

The Project Grievance Resolution Mechanism uses a three stage approach:

Stage 1: If the source of the concern is located within a community, or between community members, then the first attempt to resolve the problem will be made through traditional methods and mechanisms at community level (relying on village elders or other respected individuals/institutions such as churches, etc.) to report and resolve the issue if possible. If concerns are raised by an individual and concern an individual the first attempt to resolve the problem will be made at an individual level, and may involve other village elders or chiefs as required. Other mechanisms may involve small group or public meetings called to help resolve a grievance as appropriate. Resolutions may be facilitated by the TRHDP's Community Liaison Officer (who is also responsible for social and environmental safeguards), TRHDP's Grievance Officer (Communication Officer), or other relevant staff involved with the Component to which the grievance relates.

Stage 2: If local methods cannot solve the problem to the satisfaction of the concerned stakeholders, or the source of the concern is not community based, the stakeholders may then take the matter to the Community Benefit Sharing Coordinator of the TRHDP PO who will endeavour to propose a satisfactory solution.

Stage 3: Should the Community Benefit Sharing Coordinator of the TRHDP PO be unable to offer a satisfactory solution, the matter may then be referred to the Deputy Project Manager of the TRHDP PO. The Deputy Project Manager will consider whether the grievance is genuine and, if so, will suggest an appropriate course of action to resolve the matter.

If, for any reason, stakeholders feel that the local institutions cannot assist in the resolution of grievances because they include an individual or individuals who have themselves abused the process, then they may take their grievance to the TRHDP PO, either directly, or through any other third party such as an NGO, a faith-based group, or a women's network, etc. WASH component-related grievances may also follow the above steps, and if a complaint is made directly to the Community WASH Consultant or the WASH Contractor, they will be taken to Stage 2.

7.1.2 Grievance Records

The vast majority of complaints are likely to be made orally to project staff or contractors. As soon as possible, and within at least three days, such complaints shall be communicated to the Grievance Officer (Communications Officer), as defined in the Operating Manual, who shall be responsible for recording the grievances or complaints using the form set out in the Operating Manual. The form shall include a record of the name of the complainant/s, the date, time, and place in which the complaint is made, and the details of the concerns or grievances raised. The Grievance Officer shall record all complaint or grievance forms on a database. The database shall contain:

- Summary of the complaint or grievance arising;
- Follow up project management actions taken as necessary in accordance with the grievance procedure above;
- Sign-off/closeout at resolution of grievance.

The Grievance Officer shall report bi-annually to the Benefit Share Coordinator on the grievances recorded. The report should include gender disaggregated reporting. If, due to its nature, the

grievance requires immediate attention, the Grievance Officer would inform the Benefit Share Coordinator without waiting for a bi-annual report submission. The Benefit Sharing Coordinator will consult with the Deputy Project Manager of the TRHDP on all complaints received on at least a bi-annual basis to respond to any systematic issues or problems. The Benefit Share Coordinator would track and report on the overall project grievance resolution process to the World Bank for discussion and action as required during regular implementation support missions. More details on grievance redress mechanism will be provided in the Operations Manual.

8. PUBLIC CONSULTATION AND DISCLOSURE

The Project Office held public consultation on a draft version of this ESMF with community representatives and with national and international NGOs operating in Solomon Islands. Consultations were done over two days. The first consultation took place on Monday 22 August 2016 with Community Liaison Assistants representing communities across Bahomea and Malango.

The second, on 23 August 2016, involved representatives from a number of environmental NGOs, as well as sustainable livelihood NGOs, health and WASH NGOs and women's organisations. Each consultation focused on:

- Rationale and purpose of the Community Benefit Share Fund
- Discussion of the proposed CBSP components
- Feedback on CBSP components
- Overview of the draft ESMF including:
 - social and environmental risks for each component
 - mitigation measures for each component
 - grievance mechanism proposal
 - Feedback and discussion on each of the above
 - Feedback and discussion on ongoing CBSP consultations
- Discussion of status of the Hydro Project and availability of the draft ESIA for the hydro for review and comment

Consultations followed standard TRHDP PO communication methods. This included the use of focus group discussions and the use of existing community liaison personnel to take discussions to the community in language through informal gatherings. Community representatives included women and youth. It is noted that large public meetings can be useful for communicating key awareness messages but rarely provide an effective opportunity to receive feedback or consult, and as such were not the key tool used for community consultation on the ESMF.

8.1 Community Consultation Feedback

Key issues raised in community consultation included:

- Risks for the CBSP are low, but good consultation during planning and implementation will be key
- Main community priorities are job training and education. Very supportive of incorporating jobs training in the pilot. Job training should try to equip workers for employment not just for the project but beyond.

- An Education Authority for the area should be the most important focus of the benefit share fund. This could incorporate money from the benefit share as well as standard SIG funding. The future for the community will be in education and paid employment, logging is running out.
- The success of the benefit share fund design will depend upon how well the design can understand and work with the structure and set up of the community. It will be very hard to design a perfect fund but consultation will be key.
- It may assist to make use of the existing Tina Hydro community water supply committee in implementing the water supply component of the CBSP
- It would be helpful to have training on the use of electricity when the lines are connected so that people are not afraid to use it.
- Whether community liaison assistants could be involved in resolving community issues.
- Good clear presentation. The benefit share is familiar but good to now understand the additional details of the proposed pilot.

8.2 NGO Consultation Feedback

Key issues raised by the local and international NGOs included:

- Recommend ongoing consultation with NGOs in detailed design of the CBSP components, and particularly in the design of the benefit share fund.
- Careful preparation of budgets will be vital to the Pilot. The greatest risk to the project would be to see promised works unfinished.
- The Project that the benefit share is designed to protect is a generational project, well beyond the three year pilot. The key to its success will be establishing community governance in the design of the future benefit share fund. Using existing community structures including churches may assist.
- Success of the benefit share fund will depend on changing mindsets and creating a real sense of ownership. Project Office has always done this really well, some other programs become nothing more than election propaganda.
- Consider involving an external consultant to conduct monitoring and evaluation at the midpoint and end of the pilot project.
- Whether it will be possible to connect leaf houses to the electricity grid.
- If a Protected Area is looked into as part of the Benefit Share Fund, consider options for setting up sustainable financing, such as an endowment, to support it.
- The CBSP is providing what people actually want, and not just what NGOs want to deliver. If delivered as presented, it is excellent. High hopes for the Project. If it works, NGOs will be looking to it as a pilot.
- NGOs may be available if the Project is interested in outsourcing components. Red Cross and Live and Learn have experience with WASH projects, including in conducting associated health awareness and in training volunteers. TNC have experience establishing Protected Areas.
- Churches were instrumental in bringing up and educating the key tertiary educated members of the Malango Bahomea community. Important to engage with churches in the benefit share design.

8.3 Public consultation for CBSP projects

Ongoing public consultation will be key to the success of the CBSP components.

Communication and consultation requirements for each component of the CBSP are set out in the Operating Manual as central steps in the preparation and roll out of these components.

Building strong local leadership and unity in the Malango and Bahmoea communities is a key priority outcome of the CBSP. Community consultations will be conducted with this in mind. TRHDP PO communication policies include space to bring up local leaders to support consultations in their own communities. The ongoing key communication techniques to be used for the sub-components are similar to those for the ESMF. These will include:

- ongoing focus groups with key community representatives, including gender disaggregated groups and groups that make provision for the elderly and disabled persons;
- use of community liaison personnel engaged from local communities that are able to deliver messages in language and gather feedback in small informal sessions; and
- use of public presentations to present key messaging information in pijin. As discussed above such meetings are important for providing information but less effective for gathering accurate feedback or suggestions.

The key area for community agreement will lie in the use of and access to customary lands for installing, maintaining and operating the infrastructure aspects of Components 2A and 2B. The procedure for land access and community acceptance is set out in the Operating Manual. This procedure will be followed and all documentation records retained by the Environment and Social Safeguards Officer for World Bank review.

8.4 Information Disclosure

Disclosure will conform to the Public Communications Policy of the WB: Disclosure and Exchange of Information which requires that the ESMF document for WB projects be accessible to the interested parties and the general public. Prior to the appraisal, the ESMF document will be disclosed in the World Bank's external website and made available to the public from the TRHDP website: <http://www.tina-hydro.com/>

Copies of the ESMF document will also be made available at the TRHDP PO at Hyundai Mall, as well as at public locations, such as at the Provincial Government Headquarters. Copies of reports prepared in accordance with section **Error! Reference source not found.** of this ESMF shall be made available to the public through the TRHDP website provided that no personal or confidential information shall be disclosed.

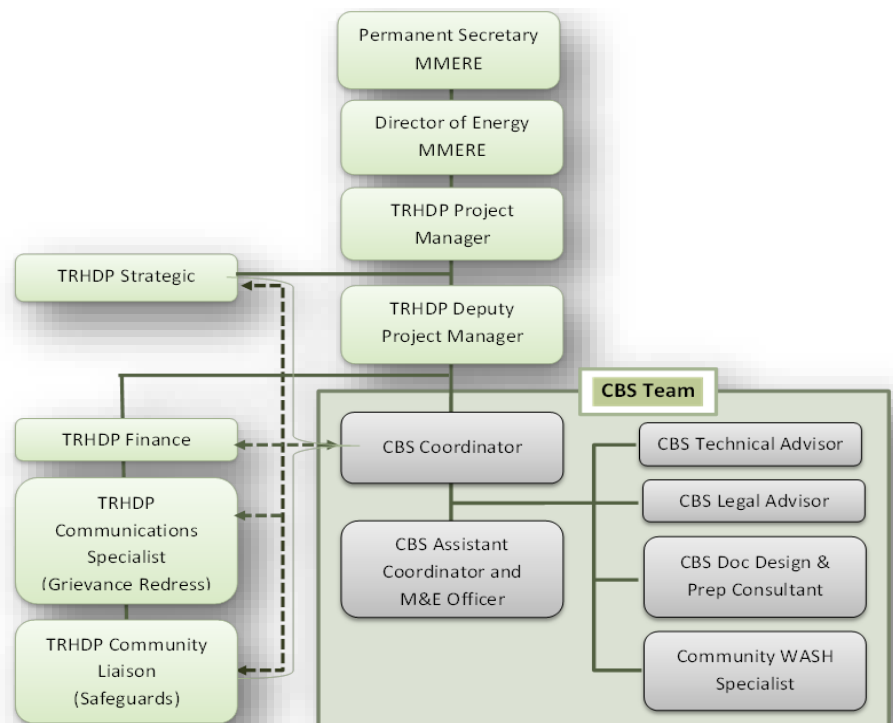
9. INSTITUTIONAL ROLES, RESPONSIBILITIES AND CAPACITY

9.1 TRHDP PO

The TRHDP Project Office (PO) will be the main unit within MMERE responsible for CBSP implementation. Management of CBSP and overall supervision of the work of the Community Benefit Sharing Team (CBST) will be the responsibility of the Tina River Deputy Project Manager under the supervision and guidance of the TRHDP Project Manager. The Project Manager, who reports to the MMERE Director of Energy, shall ensure that implementation of CBSP progresses in synchrony and complementation with TRHDP and that progress gained and challenges encountered by CBSP are properly communicated to the MMERE Permanent Secretary, the World Bank and other stakeholders.

Day to day management and coordination of project activities will be handled by the CBST under the leadership of the Community Benefit Sharing Coordinator who reports to the Tina River Deputy Project Manager. The Coordinator will be supported by an Assistant Community Benefit Sharing Coordinator who also covers the role of an M&E Officer. Other functions will be shared with TRHDP staff, including the TRHDP Finance Officer, the TRHDP Communications Officer who will also manage the TRHDP-CBSP Grievance Mechanism, and the TRHDP Community Liaison who will, at the same time, be responsible for Environmental and Social Safeguards. The key roles will include:

Figure 1. CBSP Implementing structure



9.1.1 Deputy Project Manager:

- Oversee Benefit Share Coordinator and other TRHDP PO employees and contractors in implementation of the ESMF; and
- Provide final resolution of grievances and complaints in accordance with section 7, Grievance Redress Mechanism.

9.1.2 Benefit Share Coordinator:

- Manage consultation and disclosure of the ESMF;
- Manage roles of TRHDP PO employees and contractors in implementation of the ESMF;
- Review and approve site assessment, impact screening and mitigation measure forms for Component 2A projects;

- Ensure environmental and social safeguards are incorporated into the benefit share fund design and documentation of Component 1; and
- Resolve grievances in accordance with section 7, Grievance Redress Mechanism. Refer any unresolved grievances to the TRHDP Deputy Project Manager.

9.1.3 Environmental and Social Safeguards Officer (TRHDP PO Community Liaison Officer):

- Facilitate consultation on the ESMF and component projects;
- Support the Benefit Share Coordinator to review and approve site assessment, impact screening and mitigation measure forms for Component 2A projects;
- Work with WASH Contractor to implement design mitigation measures for Component 2A projects;
- Prepare and retain records of the land and community approval process as set out in the Operating Manual;
- Facilitate community resolution of grievances under Stage 1 of the Grievance Redress Mechanism; and
- Report complaints and grievances to the Grievance Officer for inclusion in the grievance database.

9.1.4 Grievance Officer (Communications Officer)

- Publishes the ESMF on the Tina Hydro Website;
- Records grievances in the grievance database in accordance with Section 7, Grievance Redress Mechanism; and
- Provides a report of grievances to World Bank for appraisal.

9.1.5 Community WASH Consultant:

- Work with the WASH Contractor to conduct site assessment and impact screening for all Component 2A projects and prepare mitigation measures;
- Complete the three forms set out in paragraph 6.1 and provide same to the Environmental and Social Safeguards Officer and Benefit Share Coordinator for review;
- Work with WASH Contractor to implement design mitigation measures for Component 2A projects;
- Monitor WASH Contractors implementation of the project and report any environmental or social concerns to the Benefit Share Coordinator; and
- Report any complaints and grievances to the Grievance Officer for inclusion in the grievance database.

9.2 World Bank

The World Bank will:

- Advise on WB Safeguard Policy requirements;
- Publicly disclose the ESMF on the WB website; and
- Monitor and evaluate ESMF implementation as part of review missions. This monitoring and evaluation could form part of a mid-point evaluation and a final evaluation of the CBSF program.

9.3 WASH Contractor

The WASH Contractor will:

- Conduct site assessments and risk and impact assessments for all Component 2A projects in accordance with paragraph 6.1;
- Prepare mitigation measures for Component 2A projects;
- Implement mitigation measures; and
- Report complaints and grievances to the Grievance Officer for inclusion in the grievance database.

WASH Contractor will be contracted by the TRHDP PO (its CBS Team).

9.4 Solomon Power

Solomon Power will:

- Be the implementing agency for Component 2B, rural electrification;
- Prepare an environmental and social impact assessment (ESIA) for Component 2B once the design of the transmission line and other components is available. The environmental and social impact assessment shall comply with the requirements of the *Environment Act* and this ESMF;
- As part of the ESIA, prepare a detailed Environmental and Social Management Plan (ESMP) in accordance with the *Environment Act* and Solomon Power's ESMP guidance document provided at Annexure G;
- Participate in community consultations together with the Ministry of Environment in accordance with the requirements of the *Environment Act*;
- Update the ESMP at construction stage, whenever additional engineering information is available for implementing the environmental, health and safety actions included in the ESMP;
- Implement the ESMP including environmental monitoring during construction and operation of the project. ECD will be responsible for verifying the monitoring undertaken by the Solomon Power through audits and spot-checks. The outcomes of the monitoring will be included in the overall monthly progress reports to be submitted by Solomon Power to ECD.

9.5 Environment and Conservation Division (ECD) of the Ministry of Environment, Climate Change, Disaster Management and Meteorology (MECDMM)

ECD will:

- Under the requirements of the *Environment Act*, review the ESIA prepared for Component 2B, and any other aspects of the CBSP requiring development consent under the Act;
- Review the ESMP;
- Conduct public consultations where required under the Act;
- Where appropriate, issue a development consent for Component 2B with relevant conditions; and
- Monitor Solomon Power's compliance in implementing the ESIA and ESMP.

9.6 Benefitting Community

Benefitting community will:

- Provide inputs for socio-environmental site assessments and impacts screening of Component 2 infrastructure projects;
- Provide inputs for design of mitigation measures for Component 2 infrastructure projects;
- Provide inputs for design of the Benefit Share Fund including design of environmental and social safeguards;
- Actively participate in environmental monitoring during construction of Component 2 infrastructure projects and report any concerns; and
- Arrange and implement proper maintenance of the Component 2A works to ensure potential impact during operation phase are mitigated.

ANNEXURES

ANNEXURE A: LEGAL AND POLICY CONTEXT FOR LAND ACCESS

A.1 SOLOMON ISLANDS LAW A.1.1 Customary land

There are a number of characteristics of land under customary tenure that influence land access. In Guadalcanal, as in much of Solomon Islands, there is no systematic authoritative record of customary ownership or tribal land boundaries. Land use, settlement, and community composition are dynamic in response to a number of social and physical influences. In many areas broad clans have in recent times divided into smaller sub-clan groups or lineages made up of family units. These units are referred to by Bahomea locals as “tribes” – implying communities of interest based on kinship and having a degree of internal cohesion and leadership structure. Among the Malango-speaking people of this part of Guadalcanal, tribal membership is assigned through matrilineal descent, i.e., based on the mother’s lineage.

Land ownership claims are made through reference to custom, particularly special knowledge of oral histories, custom stories, legends etc., ancestors and lineages, the whereabouts of boundary markers (such as special landscape features, rocks, special trees etc.), and the whereabouts of sacred (tambu) places, i.e., places with special spiritual significance, ancestors’ settlement sites, grave sites, etc. and knowledge of their ‘stories’.

Access to customary land for local infrastructure is commonly arranged through agreements or “MOUs” with the customary landowners, or with all customary landowning groups claiming rights to the land where there are no authoritative decisions as to ownership. Such agreements are signed by customary leaders or chiefs following negotiations and consultations with the wider members of a tribe. It is good practice to mark such agreements with a ceremony or feast.

There is no formal statutory process for this type of land access on customary land (with the exception of access for forestry or mining, or where otherwise provided for in legislation eg. *Electricity Act*).

A.1.2 Registered Land

The creation and transfer of interests in registered land is governed by the *Land and Titles Act* (LTA).

For the purposes of the construction and maintenance of the transmission lines, the LTA reflects Solomon Power’s statutory rights under the *Electricity Act*. Solomon Power’s rights to construct and maintain transmission lines is an ‘overriding interest’ over any registered freehold title to land.² This provision is set out in section 114 of the LTA below:

“114. The owner of a registered interest in land shall hold such interest subject to such of the following overriding interests as may, for the time being, subsist and affect the same, without their being noted on the

² Section 114 of the *Land and Titles Act*. The *Land and Titles Act* (LTA) provides standard processes for the creation of interests in registered land. However, under the Act, easements over registered land can be obtained only where they convey rights on another land parcel (an easement appurtenant to other land), section 179. The creation of easements in favour of a person or entity (an easement in gross) as required for Solomon Power’s transmission lines is not provided for under the LTA. The LTA does make provision for licences (written agreements allowing for the use of land) over registered land, however, licences granted over land owned by the Commissioner of Lands cannot exceed a term of three years (section 248).

register-... (h) rights and powers relating to electric supply lines, telephone and telegraph lines or poles, pipe lines, aqueducts, canals, weirs, dams, roads and ancillary works, conferred by any written law; ...”

Annexure B sets out the Land Use Procedures to apply to registered land owned by the Commissioner of Lands.

A.1.3 Land Access for transmission lines under the Electricity Act

Under the *Electricity Act* Solomon Power has the power to acquire any land for its purposes by voluntary agreement (section 33).

Solomon Power also has the right to a statutory easement under the *Electricity Act* to construct and maintain transmission lines on any land without acquiring land or formally registering rights to the land (section 34). These rights are upheld under the *Land and Titles Act* as an overriding interest where the land is registered land.

Where these statutory rights are used, Solomon Power is obligated under the Act to provide compensation for any damage or loss caused to either the owners and users of the land (whether registered or customary). While the Act requires an affected person to make a claim for compensation within three months, Solomon Power will provide a pro-active livelihood restoration and compensation regime in accordance with WB and ADB safeguard requirements (see Annexure C).

Table - World Bank’s Safeguards Policy on Involuntary Resettlement (OP4.12)

<p>Policy Objectives Involuntary resettlement may cause severe long-term hardships, impoverishment, and environmental damage unless appropriate measures are carefully planned and carried out. The overall objectives of the World Bank’s policy on involuntary resettlement are:</p> <ul style="list-style-type: none"> • Involuntary resettlement should be avoided where feasible, or minimized, exploring all viable alternative project designs; • Where it is not feasible...resettlement activities should be conceived as sustainable development programs, providing sufficient investment resources to enable the persons displaced by the project to share in project benefits. Displaced persons should be meaningfully consulted and have opportunities to participate in planning and implementing resettlement programs; <p>Displaced persons should be assisted in their efforts to improve their livelihoods and standards of living or at least to restore them.</p>
<p>Impacts Covered Direct Economic and Social Impacts caused by the involuntary taking of lands, resulting in:</p> <ul style="list-style-type: none"> • Relocation or loss of shelter; • The loss of assets or access to assets; • The loss of income sources or means of livelihood, whether or not the affected persons must move to another location.
<p>Required Measures To address the impacts covered, a resettlement plan (or an abbreviated plan) is prepared. It is to include measures to ensure that:</p> <ul style="list-style-type: none"> • Affected Persons are informed about their options and rights, consulted with and provided technically and economically feasible alternatives; provided prompt and effective compensation at full replacement cost for asset losses attributable to the project and/or alternative or similar resources to compensate for the loss of access to

<p>community resource, and; provided support (for a transition period) and developmental assistance;</p> <ul style="list-style-type: none"> • The needs of vulnerable groups warrant particular attention; • The taking of land is to take place only after compensation has been paid and measures to assist are implemented; • Appropriate and accessible grievance mechanisms are to be established; • Existing social and cultural institutions are to be preserved, to the extent possible, and the affected persons' preference honoured.
<p>Eligibility for Benefits</p> <ul style="list-style-type: none"> • The borrower carries out a census to identify the persons who will be affected by the project to determine who will be eligible for assistance and to discourage the inflow of people ineligible for assistance; • The borrower also develops a procedure, satisfactory to the Bank, for establishing the criteria by which displaced persons will be deemed eligible; • For losses of assets other than land, all persons are provided compensation.
<p>Planning, Implementation, and Monitoring</p> <p>The borrower is responsible for preparing, implementing, and monitoring:</p> <ul style="list-style-type: none"> • A resettlement plan or abbreviated resettlement plan policy framework • A comprehensive process framework for projects involving restriction of access, with a strategy for achieving policy objective. It will: (a) include early screening, scoping of key issues and the information required to prepare the resettlement component or subcomponent; (b) draw on appropriate expertise and relevant community-based organisations and NGOs; (c) vary in scope and detail, depending on the magnitude and complexity of the component of resettlement; (d) be cost-effective (with costs of resettlement included in the overall costs of the project); • The plan will be provided, in draft, to the Bank, and made available to the displaced persons and local NGOs in a form, manner, and language understandable to them.
<p>Resettlement Instruments</p> <ul style="list-style-type: none"> • Resettlement Plan or abbreviated RP that conforms to this policy; • Resettlement Policy Framework; • Process Framework
<p>Assistance to the Borrower</p> <p>In furtherance of the objectives of this policy, the Bank may support the borrower and other concerned entities</p>

ANNEXURE B: LAND USE PROCEDURES

Land Use Procedures

Social safeguards policy OP4.12 Involuntary Resettlement has been triggered for this Project. The objective of this policy is to ensure affected persons living standards are not adversely affected as a result of the Project or its interventions, especially as a result of involuntary land acquisition. As such, the Borrower is required to either prepare appropriate social safeguard instruments or conduct adequate due diligence to address all adverse impacts that will be generated as a result of project activities and subprojects.

A. Rationale

It is envisaged that the land required for project purposes will occur through either voluntary land donation and/or land use agreements. Activities that require physical displacement (relocation or removal of houses, businesses or permanent structures), economic displacement (loss of livelihood, restriction of access to traditional lands or resources), and/or involuntary acquisition or leasing of customary land are not eligible for funding under CBSP. This means that any land required for the purposes of this project will largely be based on the goodwill of the beneficiary community.

This framework guides the process where landowners wish to provide access, change of land use, or donate land for project purposes that are of **direct benefit** to them and their community. It also outlines the procedures for other scenarios involving government land or assets.

B. Key Principles

- Decisions on land and donations will be made with informed consent, free of coercion, and will not unduly affect the donor
- Full consultation with landowners and any claimants will occur well in advance
- Living standards and livelihoods not adversely affected (i.e. no individual should lose more than 10% of their productive assets or landholdings)
- Any agreement will be confirmed through written record and verified by an independent third party
- Participating individuals and communities should be made aware of how to access the grievance redress mechanism.

C. Procedures for securing land

CBSP subprojects involving water supply, sanitation, and electrification will require the use of land. In most cases, water supply and sanitation subprojects will involve community asset(s) on customary land (Section E). Transmission lines for electrification will involve State-Owned Enterprise (i.e. Solomon Power) asset(s) on government land or customary land. Potential scenarios are detailed in Table B-1.

Table B-1- Securing landScenario	Requirement
Community asset on customary land	Land Commitment Letter is completed following the voluntary land donation protocol in Section E below.
Community asset on government land	Commissioner of Lands verifies in writing asset is acceptable and endorses the asset to be erected on government land. Memorandum of Understanding (MoU) between community and relevant Government agency is negotiated and signed (Annex 2).
SOE asset ³ on customary land	SOE requests use of customary land for direct community benefit with reference to statutory rights under <i>Electricity Act</i> . A Land Commitment Letter is negotiated and signed.
SOE asset on government land	Commissioner of Lands verifies in writing asset is acceptable and endorses the asset to be erected on government land.

D. Procedures

D.1 Voluntary Land Donation Protocol for Customary Land

For cases where communities and/or individual landholders have offered to donate their land for the project because it is of benefit to the broader community, the World Bank's Voluntary Land Donation Protocol (VLDP) should be followed. The project team is to exercise their best judgment where voluntary land is offered and conduct due diligence to avoid adverse impacts and reputational risks. Donations are based on the premise that the project benefit will offset or outweigh the loss of the land donated.

VLD is *only* suitable for community level subprojects where the landowner and/or community wish to 'gift' land parcels or small areas for small-scale community infrastructure that will be of direct benefit the donor's community.

D.1.1 When VLD is Applicable

³ Appropriate assets will include those that are a direct community benefit that the community has requested such as a classroom, aid post or similar.

Voluntary donation of land by beneficiary households is acceptable where:

- It has been verified the donation did not result from any form of coercion or manipulation and is offered in good faith;
- The donation does not severely affect the living standards of the community and/or individual landholder responsible for the donation (i.e. impacts are marginal based on percentage of loss and minimum size of remaining assets);
- Alternatives and the viability of other locations or sites have been considered;
- The donation does not result in the displacement of households or cause loss of income or livelihood;
- The landholder/s making the donation will directly benefit from the project;
- Consultation has been conducted in an open and transparent manner and to a degree that the landholder/s can make an informed choice;
- The land is free from disputes regarding ownership or tenure;
- Full and proper documentation of all consultations, meetings, grievances and actions taken to address grievances has been reviewed and made available;
- Where impacts are minor and other alternative sites are not viable.

D.1.2 When VLD is NOT Applicable

VLD is NOT applicable under the following scenarios:

- Medium/large-scale infrastructure particularly in cases where a government agency or entity that has a statutory obligation to provide the infrastructure and/or services for which the land is required
- Where inadequate consultation with donors of customary land results in lack of understanding about the terms and conditions of the donation;
- In lieu of formal procedures for land acquisition where these do not exist;
- Where donor property owners, landowners or customary rights holders do not support, or will not directly benefit from the Project;
- Where conflicts over land exist, including customary collective ownership;
- Conflicting land titling that make it difficult to establish with certainty who has a right to own, donate and use a specific parcel of land;
- Where donors did not provide their informed consent and were subject to political or social pressure and coerced into making the donation.

D.1.3 Process for Voluntary Donation

This section provides guidance on the process for VLD, namely on how to:

- Verify the requirements of the donation and the formalization of the donation;
- Carry out due diligence on the owners and users of land donated;
- Ensure appropriate consultation and disclosure;
- Establish informed consent of the person donating the land;
- Sign written commitment; and
- Establish grievance redress mechanism.

The project team will undertake the following steps:

(i) Determine VLD is appropriate in the circumstances of the project

The team should assess that:

- land is being put forward *voluntarily* by rightful customary landowners;
- the land is suitable for the proposed subproject (alternatives have been considered);
- the subproject has a direct benefit to the donor and their community;
- the donor and their livelihood will not be adversely affected by the donation;
- size of the area required; and
- donor's understanding of the terms and conditions of the donation.

(ii) Conduct due diligence on who owns and uses the land

Given the specific issues surrounding land ownership and user rights, it is important that the project team carries out careful due diligence to understand the type of land rights that exist and to identify any particular issues relating to land ownership and use. Thereafter, specific due diligence must be conducted on each parcel of land proposed for donation to identify:

- The rightful customary owner(s) of the land;
- Those with customary rights to use the land or its natural resources; or any parties that occupy the land (either physically or through ownership of an asset or conduct of livelihood or business activities on the land);
- Any competing claims of ownership or use;
- Structures and assets on the land;
- Any encumbrances on the land.

It is important to: (a) identify the right that is being transferred (an ownership right, a use right, a right of way, etc.); and (b) check whether the donor actually has the right s/he claims to have. In many circumstances where careful due diligence has not been carried out, significant conflict has arisen at a later stage when another party claims that they have the same or a competing right. In some circumstances – but not all – the donor will have documentary evidence of such right. Where one or more customary landowning groups claim ownership, the agreement of all potential customary landowning groups may be obtained. Where conflict or potential conflict over the ownership of the land or its boundaries, alternative sites will be required.

(iii) Disclosure and Consultation

The decision to donate must be taken on the basis of a full understanding of the project and the consequences of agreeing to donate the land. Accordingly, the donor(s) and users of the land must fully comprehend what the land will be used for, for how long, and the impact the donation will have on them and their families.

The long-term and inter-generational impacts of the donation need to be fully considered by the clan and/or families donating the land.

(iv) Establishing Informed Consent

It is crucial that the project team is confident that the decision to donate customary land was taken in circumstances of *informed consent or power of choice* and offered on the goodwill of the donor/customary land owner(s). The owner(s) or user(s) of the land understand:

- What the land is going to be used for, by whom and for how long;
- That the ownership or right to use the land will change, and what this really means;
- Possible alternatives to using this land;
- What they will need to do to donate the land (e.g., documentation, get spousal consent);
- The exact demarcation of land boundary;
- The potential intergenerational impact of the donation on their family, what they can do if they (or their family or heirs) want the land back.

(v) Documentation

The terms and conditions of the land use donation must be mutually agreed upon and detailed in a written agreement.

Meeting minutes with landowner(s) and parties with an interest in the land must be recorded and documented prior to the donation of land for subproject purposes. All parties must be consulted widely to ensure clear understanding of the intent, voluntary nature and conditions of the donation.

Legal transfer is not required since it is for the subproject purpose and cannot be transferred to an entity as such. The TRHDP PO will seek use rights for customary land to develop the subprojects but will not seek or obtain ownership rights.

Representatives of the landowners (family or clan) will sign a Land Commitment Letter. This certifies that the land is voluntarily donated for the purposes of the subproject and for the benefit of the community. The signature of the Letter is witnessed (as attested by their signature) by a suitable project representative.

The project team will:

- Identify additional appropriate documentation that may be required;
- Ensure that the Land Commitment Letter:
 - Refers to the consultation that has taken place (date, attendees, topics);
 - Confirms the donation was voluntarily made and not subject to coercion, manipulation, or any form of pressure;
 - Includes accurate map of the land being donated (boundaries, coordinates);
- Ensure that all necessary parties sign the documents;
- Ensure local witness(es) or third party verification to the Land Commitment Letter.

The Project implementing agency should maintain a record with documentation for each parcel of land donated. Such documentation must be available for World Bank review, and for review in relation to any grievances that may arise.

(vi) Grievance Arrangements

Grievance Arrangements follow the procedures outlined in the ESMF. Grievances may be referred to customary conflict mediation arrangements where they are not directly affiliated with traditional leaders who are a party to the donation process. The subproject will not be allowed to take place on a land that comes under unresolvable ownership disputes during subproject preparation. See ESMF for more information.

D.2 Government Land

There may be some potential for community or SOE assets funded by CBSP to be located on government land. Government land will be used in preference to customary land where suitable for subprojects, and it is proposed that the majority of the transmission lines will be developed on Government land. In such situations, a MoU with relevant government agencies and community/SOE representatives will be required.

The Memorandum of Understanding (MoU) applies when government land is required for a community or SOE asset and the relevant government agency has agreed for the land to be used for a specific purpose, over a specific timeframe, for the benefit of the whole community. The land parcel will be confirmed with the Ministry of Lands, Housing and Survey. Annex 2 contains the MoU template.

Annex One: Land Commitment Letter

The Land Commitment Letter applies when (i) customary land is required for the subproject; (ii) no suitable alternative sites exists, and (iii) customary landowners have agreed for the land to be used for a specific purpose, over a specific timeframe, for the benefit of the whole community. The Land Commitment Letter does not apply when state- or registered land will be utilized or needs to be acquired. The agreement will be in relation to small-scale assets that are of direct community benefit that are either government-owned or community-owned. It is important that absentee landowners are engaged, and that a suitable witness (non-clan member) signs this agreement. Due diligence on correct customary landowners must be conducted prior to the signing of this agreement.

Based on discussions during the project preparation phase, the process that would be used under CBSP to sign the Land Commitment Letter is as follows:

- TRHDO PO to arrange meetings with representatives of the specific clan/tribes who have customary ownership of the proposed land and other community leaders as appropriate (village chiefs, religious leaders etc.);
- Any persons with fixed physical assets on the land/proposed site, but not considered a landowner, is involved in meetings and their rights are taken into consideration;
- The meeting would discuss the proposed sub-project with the land owning tribe to reach an understanding that the subproject is for the benefit of the whole community and change of land use (either permanent or temporarily) is required;
- Share the rationale for the sub-project and its proposed siting, and seek the donation of the use of the necessary land by the owning tribe;
- The landowners would also be notified clearly that their agreement to allowing the use of their land should be completely voluntary and will not involve compensation, now or into the future (loss of assets and livelihoods caused by the use of the land will be compensated for in accordance with the entitlement matrix found in Annexure C);
- If agreement to proceed is reached, then a Land Commitment Letter will be entered into between the tribes, the other tribes and the leader of the community;
- The Land Commitment Letter should be endorsed by the Commissioner of Lands;

Exit Strategy and Grievances

If all landowner parties are in disagreement about the land or the Land Commitment Letter, or if landowners are excluded from initial discussions then the subproject will not proceed and the grievance process must be followed.

Annex 1: SAMPLE LAND COMMITMENT LETTER

Dear Sir,

Re: LAND AVAILABILITY FOR THE PROJECT

This letter serves to confirm our commitment that land is available for the Community Benefit Sharing Pilot Project.

This area of land (_____) is confirmed to be available to use for [describe the works to be undertaken eg. build, maintain and repair water supply] to provide [describe services eg. water for X village]. Once complete, the [describe services] will be available for free use by any member of the local community.

We are providing this land for the improvement of the surrounding villages and schools (confirm as appropriate). No payment will be made for the use of the land.

The signatories agree that this commitment is irrevocable.

1. Resource owner representative (Name)
representative

2. Resource owner

2. Signature

3. Date

4. Verified by Village Chief and CBSP Project Staff

Village Chief

CBSP Project Staff

Annex Two: Memorandum of Understanding

Template:

This Memorandum of Understanding entered into by and between;

The Government of Solomon Islands as represented by [Name of Agency (e.g. Commissioner of Lands/ the Ministry of Lands, Housing and Survey)];

---AND---

The community of _____, Malango Ward, Province of Guadalcanal, represented by its village leaders, the names of which are enumerated at the end of this document;

---OR---

Solomon Power represented by [title of the representative], the name of which is enumerated at the end of this document;

Whereas, the Government through MMERE is administering and implementing the Community Benefit Sharing Pilot Project (the Project herein) with the support of the World Bank;

The Government of Solomon Islands, as represented by the Commissioner of Lands, agrees to permit the use of government land to [members and representatives of the _____ communities] OR [SP] for the CBSO Project described above exclusively under the Project and guarantee the unimpeded use of the land by the public;

[Name of the Government Agency—e.g. Commissioner of Land/ the Ministry of Lands, Housing and Survey] has confirmed the land parcel is confirmed to be government land by _____ and has a total area of _____ square meters / _____ hectares in _____ (Village) _____ (Ward) in _____ Province.

No amendment or additional terms and conditions to this MoU shall be deemed binding between the parties unless mutually agreed upon by them in writing.

IN WITNESS WHEREOF, we have hereunto affixed our signatures this ____ day of _____ 20__.

By and on behalf of the Government of Solomon Islands:

_____ (Name and Signature)

_____ (Designation)

Witness:

I, _____, a Lands Officer of Ministry of Lands, Housing and Survey, a public servant of Solomon Islands, do hereby certify that the contents of this Agreement were read over by _____ in the _____ language that is understood by the signatories

to this Agreement and I further certify that to the best of my knowledge and belief the contents of this Agreement are understood by the signatories hereto.

Dated at _____ this _____ day of _____ Signature:
_____ Designation: _____

Name	Signature	Ward/Village	Clan/Sub-Clan	Date
				.
				. .

ANNEXURE C: LIVELIHOODS ENTITLEMENT MATRIX

A. LOSS OF LIVELIHOODS ASSETS				
EFFECT	APPLICATION	AFFECTED PARTIES	ENTITLEMENTS	ASSOCIATED ACTIONS & RESPONSIBILITIES
A1 Permanent loss of individual/household owned assets on customary or registered land	Gardens and crops on the transmission line route	Identified owners to be recorded in asset register	<p>Food gardens on registered land:</p> <ul style="list-style-type: none"> Owners will have free use of the identified area of garden land for food production until cut off date. Solomon Power/CBSP will accept no liability for damage to crops or other assets on the land on or after the cut off date. <p>Food gardens on customary land:</p> <ul style="list-style-type: none"> Owners will receive compensation for any crops on the land at the cut off date at the value calculated using Solomon Island's Government crop compensation rate. <p>All food gardens (whether on registered or customary land):</p> <ul style="list-style-type: none"> Garden owners will receive practical assistance with preparing a new garden outside of the boundaries of the transmission line corridor/water supply land. <ul style="list-style-type: none"> The new garden must be of similar size, the area for the garden must be identified by the owner of the garden and their household, and if necessary the use of the area for the new garden must be approved by the landowner Solomon Power/CBSP will provide labour (contracted locally) to clear the garden area and prepare the soil ready for planting under the guidance of the Garden owner Two months after the planting of the new garden by the owner, the owner's household will receive a "garden re-establishment cash grant" of \$1000, payable in the first instance (where appropriate), to the bank account of the senior female of the owner's household. 	<p>Survey of assets in customary and registered land – providing a register of assets and owners (Solomon Power)</p> <p>Adjustment, if any, of the transmission line corridor (Solomon Power)</p> <p>Engagement, training and equipping of a group of workers drawn from the local youth population (Solomon Power)</p> <p>Geo-referenced register of new gardens created.</p>

A. LOSS OF LIVELIHOODS ASSETS				
EFFECT	APPLICATION	AFFECTED PARTIES	ENTITLEMENTS	ASSOCIATED ACTIONS & RESPONSIBILITIES
	Trees in the transmission line corridor or otherwise affected by Component 2B	Identified owners of fruit, nut and commercial timber trees recorded in asset register.	<p>Identified owners of livelihood trees will be entitled to:</p> <ul style="list-style-type: none"> Free use of the identified trees until the cut off date and the owners may retain the produce and timber from those trees up to that time. The market value of the tree/s based on Ministry of Agriculture' schedule of compensation prices with adjustments for CPI/current market prices (as per THRDPA LALRP) as at the cut off date. Free practical assistance with replacement of trees, including <ul style="list-style-type: none"> free replacement tree seedlings of same species for planting on land outside of the affected transmission line corridor labour assistance with replanting (contracted locally, and paid for by Solomon Power/CBSP) 	<p>Inventory of trees and register of owners in the transmission line corridor</p> <p>Advanced ordering and supply of seedlings (Solomon Power, CBSP, forestry consultant, & nursery supplier)</p> <p>Labour assistance provided from within local youth population (as above)</p>
A2. Permanent loss of shared or common community assets on customary and registered land	Fruit, nut, and materials trees (other than trees compensated for under A1)	Unidentified community members who are users of common assets removed for the construction and maintenance of the transmission line corridor	<p>The communities who share in common the use of fruit and nut trees within the infrastructure corridor that will be removed for the project will be entitled to:</p> <ul style="list-style-type: none"> Free use of the identified trees until the cut off date. Free replacement of the trees, including: <ul style="list-style-type: none"> free replacement tree seedlings of same species for planting on land outside of the boundaries of the transmission line corridor labour assistance with replanting 	<p>Post construction assessment of planting areas</p> <p>Community-based labour assistance crew drawn from youth population</p>

B. LOSS OF STRUCTURES				
IMPACT	APPLICATION	AFFECTED PARTIES	ENTITLEMENTS AND COMPENSATION	ASSOCIATED ACTIONS AND RESPONSIBILITIES
B1. Partial or total removal of a structure on the acquired land	Private house, hut, market stall, or animal pen or similar built structure located on the acquired land.	Owners and users of identified structures, with or without legal title	<p>Where damage to or removal of these structures due to the project cannot be avoided, the owners will be entitled to:</p> <ul style="list-style-type: none"> • free use of the identified structures until cut off date • compensation in cash for all affected structures at 100% of the full replacement cost for materials and labour, as determined by a formal neutral valuation • free use of salvaged materials. <p>The owners will also be paid a re-establishment allowance of \$10,000 once the replacement structure is completed. On land outside of the acquired land</p>	<p>Finalisation of the alignment and boundaries of the infrastructure corridor</p> <p>Identification and formal valuation of any structures within the final alignment</p>
C. SEVERELY AFFECTED PERSONS				
IMPACT	APPLICATION	AFFECTED PARTIES	ENTITLEMENTS AND COMPENSATION	ASSOCIATED ACTIONS AND RESPONSIBILITIES
C1. Severely affected persons (greater than 10% of livelihoods) and their households			Consult with affected households, village chiefs and senior women to identify any households or persons for whom project activities may affect more than 10% of their livelihood	Livelihood Mapping Consultant to establish a database of severely affected persons.
			In addition to standard livelihoods/compensation measures above, provide the affected household with comparable food based on above study results (predominately market food) or store vouchers to the value of \$25,000 (being 50% of average annual income for Bahomea households), provided to the senior female of the household.	CBSP to implement measures for severely affected persons/households

ANNEXURE D: IMPLEMENTATION SCHEDULE

Action	Lead Actors	Completion By
Engage CBSP Co-ordinator and deputy co-ordinator	TRHDP PO	Within 6 weeks of CBSP commencement
Engage WASH Specialist	TRHDP PO CBSP Co-ordinator	Within 2 months of CBSP commencement
Engage WASH Contractor	TRHDP PO CBSP Co-ordinator	Within 4 months of CBSP commencement
Site Selection for Component 2A water supply projects minimising livelihood impacts	CBSP Co-ordinator and WASH Specialist	Within 6 months of CBSP commencement
Initial transmission line route livelihood asset survey	CBSP Co-ordinator Livelihood Mapping Consultant and Solomon Power	Within 6 months of CBSP commencement
Finalise transmission line route minimising livelihood asset impacts	Solomon Power and CBSP Co-ordinator	Within 8 months of CBSP commencement
Prepare EIA including ESMP (in compliance with this ESMF) for Component 2B (transmission line) and submit to Min of Env	Solomon Power	Within 12 months of CBSP commencement
Consultations with potential landowners and communities regarding land commitment letter for use of any customary land	CBSP Co-ordinator	Commence within 10 months of CBSP commencement
Consultation with Commissioner of Lands re MOU for Government land	CBSP Co-ordinator	Commence within 10 months of CBSP commencement
Signing of land commitment letters and MOU with witnesses. Ceremony to commemorate.	CBSP Co-ordinator	Within 12 months of CBSP commencement and before commencing work on the land
Conduct detailed survey of livelihood assets on affected land, including owners, number and type of asset affected	Livelihood Mapping Consultant	Within 14 months of CBSP commencement and before commencing work on the land

Action	Lead Actors	Completion By
Consultation with owners of affected livelihood assets (project affected persons) advertising cut-off date	CBSP Co-ordinator	Within 16 months of CBSP commencement and before commencing work on the land
Implementation of entitlements matrix for asset owners	CBSP Co-ordinator	Before commencing work on the land
Pre-construction consultation workshop	CBSP Co-ordinator	Before finalising Step 2 for Component 2A (completion of Form 3: Impacts Screening)
Implementation of Steps 2-3 of Component 2A (water supply)	WASH Specialist and WASH Contractor	Forms to be completed before commencing construction
Community consultations for development consent and issuing of consent (Component 2B)	Ministry of Environment – ECD Division	Before commencement of construction for Component 2B
Implementation of ESMP for Component 2B (transmission line)	Solomon Power	
Ongoing monitoring and reporting	Environment and Social Safeguards Officer and CBSP Co-ordinator	Forms for Steps 1-3 of Component 2A to be reported.
Ongoing implementation of Grievance Mechanism	Grievance Office (communications officer)	Ongoing.

ANNEXURE E: CULTURAL ARTEFACT CHANCE FIND PROCEDURES

In the event that artefacts, objects are exposed during construction phase, the contractor and other relevant party conducting construction works will follow the procedures described below:

- a. Stop the construction activities in the area of the chance find.
- b. Delineate the discovered site or area.
- c. Notify the Environmental and Social Safeguards Officer.
- d. Environmental and Social Safeguards Officer to notify village or tribal leaders and secure the site to prevent any damage or loss of removable objects. In cases of removable antiquities or sensitive remains, a night guard or other relevant protection shall be present.
- e. Notify the Benefit Share Project Coordinator (within 72 hours).
- f. Ensure that decisions on how to handle the finding be taken in consultation with the members of the relevant cultural group. This could include changes in the layout (such as when the finding is an irremovable remain of cultural or archaeological importance) conservation, preservation, restoration or salvage.
- g. The decision concerning the management of the finding shall be communicated in writing; and
- h. Construction work will resume only after authorization is given by the Deputy Manager of TRHDP PO.

During project supervision, the Environmental and Social Safeguards Officer shall monitor the above regulations relating to the treatment of any chance find encountered are observed.

Relevant findings will be recorded by the World Bank in its regular supervision mission. If deemed appropriate, the project's Implementation Completion Reports (ICRs) will also assess the overall effectiveness of the project's cultural property mitigation, management, and activities, as appropriate.

ANNEXURE F: PROCEDURE FOR HANDLING UXOS

1.0 Introduction

Solomon Islands was the site of severe battle between the Japanese Army and the American Allied Forces during WWII. The war resulted in hundreds of thousands of firearms and UXOs items left behind.

WWII ordnance found in Solomon Islands can be defined as either unexploded (UXO) or abandoned (AXO). Unexploded ordnance are explosive ordnances that has been primed, fused, armed or prepared for use in armed conflict but has failed to explode. Abandoned explosive ordnances are explosive ordnances unused during the war and subsequently left behind.

For the purpose of this guide, UXO is used as the general term to describe unexploded or abandoned ordnance, munitions and explosive devices left behind during WWII which represents a hazard to people and to any future development of the land on which they are abandoned.

Although UXO is not captured in the Environmental Act 1998 and Environmental Regulation 2008, UXO clearance activities have become an integral part in any development activity in the Solomon Islands. As the ministry responsible for infrastructure development in SI, MID has a draft UXO procedure developed as a means to render safe and take responsibility for UXO related hazards on any development activity occurring on SIG crown land.

Note that this guide only provides guidance for the management of UXO threats. It does not give detailed guidance on EOD contracting practise. The safety of Solomon Power employees, its clients and customers, developers and partners, consultants and contractors are not guaranteed.

More guidance on international standards on unexploded ordnance for the construction industry can be obtained from **CIRIA C681: Unexploded Ordnance (UXO)**

2.0 Objective of the Guide

The overall purpose of this guide is to provide a policy and framework governing responsibility and procedures to assess, mitigate and eliminate any UXO related hazard from any Solomon Power project site before any construction work commences. It provides guidance on the management of any UXO hazards associated with any development activity carried out by the Authority.

This guide also helps the Authority conduct appropriate UXO risk management procedures at the design phase, provide budget for and seek appropriate advice and guidance on UXO contamination and disposal.

It provides the steps to follow to allow EOD contractors to sweep and clear contaminated project sites before any building, engineering, geotechnical investigations, and maintenance work of a construction nature starts.

3.0 Target Audience

This guide is targeted for Solomon Power staff, its clients and customers, developers and partners, consultants and contractors. It should be applicable to health authorities, the environmental division, land owners and other relevant local agencies and stakeholders involved in the development project.

Solomon Power's Contractors and Engineers are equally responsible for the wellbeing of their personnel on site and would be advised at the initial contract meetings of their responsibility, the process to manage UXO risks and who to contact at Solomon Power regarding UXO sightings and threats during project construction.

4.0 Responsibility and Risk Mitigation Measures

Risk mitigation measures are put in place to ensure so far as is reasonably practical the health and safety of Solomon Power employees and of any other persons affected by the development activity.

4.1 Authority

Solomon Power and all its employees have a responsibility under the Solomon Power OH&S policy⁴ to ensure the safety of its staff and every other person involved or affected by its normal day to day operation or any development activity.

The responsibility to report a sighting of a UXO or any suspicious article found at project sites or any Solomon Power location in the country resides with Solomon Power and all its employees.

In the event of a suspicious UXO find, the following risk mitigation measures should immediately be followed.

- the area must be cordoned off appropriately
- physical measures put in place to avoid unauthorised tampering of the UXO find
- highly visible markings are provided at the HIGH RISK area.
- the UXO risk is communicated to surrounding communities

The find is reported to the Solomon Power Capital Works Programme Manager (CWPM) and the RSIPF-EOU. The CWPM will be responsible for the assessment, mitigation or elimination of any UXO related hazard with responsible authorities and EOD clearance contractors. Solomon Power will keep statistics and records of UXO information from studies done on its sites and the report made available to public upon request.

A reporting system is required to be established, communicated to all parties and managed for UXO clearance activities.

Solomon Power is responsible for public awareness and consultation and building employee and stakeholder capacity to respond to the UXO threats at Solomon Power locations

UXO clearance will be considered and integrated into capital development activities and budget.

⁴ The Solomon Power policy on Occupational Health and Safety 2010 is being reviewed.

4.2 General Public

The general public must be consulted and encouraged to provide feedback and comments on their general short and long term safety during planning and design stage through the operational life of the project. These public consultations are carried out as part of required activities at the initial project initiation, planning and design stage.

Public comments and concerns must be properly documented and timely feedback provided. The mechanism to address public concerns will follow the existing Solomon Power mechanism for handling of customer complaints, through the Customer Service Department and the Public Relations Officer.

4.3 EOD Contractors

EOD contractors are required to be competent and registered to carry out this type of service. They are required to have the necessary expertise and equipment to identify, isolate, remove and safely dispose all UXO threats with assistance from the RSIPF-EOU.

The EOD contractor is responsible for site safety procedures and are required to have in place appropriate strategies to manage risks and environmental impacts and have appropriate insurance coverage.

The contractor will provide to Solomon Power before any clearance work begins,

- Supporting documentation on competency (experience and references), insurance coverage and legal registration where necessary
- Proposed suitably qualified and experienced staffing to carry out the service
- Proposed procedures complying with international standard UXO clearance practices
- Proposed UXO identification and clearance methodology and timing
- Contract amount for the service

The typical activities to be carried out by EOD contractors is summarised below.⁵

- Carry out and complete UXO survey of the project site including affected areas outside of the project site but related to the project.
- Cordon off areas and prevent unauthorised tampering where suspected UXO threats are determined.
- Arrange for and carry out safe removal of all UXO ordnance from project site.
- Responsibly dispose UXO ordnance in accordance with relevant local law
- Ensure strategies and resources are in place to manage unintended accidents and explosions.
- Provide a report confirming completion of UXO survey, detection, removal and disposal.
- Provide necessary documentation to RSIPF – EOD and other relevant SIG agencies for the issuing of a Certificate of Clearance.
- Continuously monitor, document and report to Solomon Power and RSIPF any residual UXO threats arising during project implementation

⁵ The procedures are summarised from the MID's '9.0 Unexploded Ordnance Procedure'

The contractor will confirm and certify in accordance with **CIRIA C681: Unexploded Ordnance (UXO)** or an alternate internationally accepted standard.

4.4 RSIPF – EOU

The RSIPF– EOU is the body responsible for clearance and disposal of UXO finds. The RSIPF EOU also responds to public reports of UXO and undertake clearance activities. Where there are no nearby police stations in the outer islands, reports should be directed to relevant government district agencies which then notify police at the provincial headquarters.

The RSIPF EOU will provide a Certificate of Clearance after suspected UXO ordnances have been removed by them or by EOD clearance contractors before any construction work can begin.

5.0 Risk Assessment and Management

5.1 Preliminary Risk Assessment

Preliminary risk assessment is required to be carried out to enable Solomon Power to identify any potential UXO risk or threat and decide whether a detailed risk assessment is required.

Preliminary risk assessment includes:

- examination of existing historical data
- talking with local surrounding communities about any past occurrences with UXO's
- provide probability on threat potential and
- recommend further steps to take

This is to be documented and filed and communicated to the CWPM or Project Engineer. A Preliminary risk assessment form is attached in Annex 1.

If potential risks are identified, a detailed risk assessment leading to detection and identification, recovery and disposal will be initiated.

5.2 Detailed Risk Assessment

In the Detailed Risk Assessment stage, project planning will take into consideration UXO activities in the design and budget for the project.

Risk mitigation measures are put in place and the public made aware of the UXO risk.

6.0 Contact Details

All Solomon Power staff, clients and customers, developers and partners, consultants and contractors are to contact the following Solomon Power and RSIPF personnel regarding UXO issues on Solomon Power land.

Organisation	Contact Detail
Solomon Power	Grace Ma'ai Hybrid Project Manager P.O. Box 6

	<p>Honiara Email: Grace.Maai@siea.com.sb Tel: 32944</p>
	<p>Robin Simpson Safety Officer P.O. Box 6 Honiara Email: robin.simpson@siea.com.sb Tel: 32944</p>
	<p>Rubina Tagana Public Relation Officer P.O. Box 6 Honiara Email: rubina.tagana@siea.com.sb Tel: 32944</p>
RSIPF	<p>Officer in Charge Explosive Ordnance Unit P.O. Box G1723 Honiara Tel: 20443</p>
Ministry of Environment, Climate Change, Disaster Management and Meteorology.	<p>Director Environmental Conservation Division P.O. Box 21 Honiara Tel: 23031</p>
MID	<p>Under Secretary (Technical) P.O. Box G8 Honiara Tel: 25783</p>

Annex 1: Preliminary risk assessment form

	Details		
Name of assessor			
Date of assessment			
Site Address			
Development Proposed			
Historical findings			
Findings from Interviews	Name of interviewee	Detail	
Threat potential / Probability ⁶	Probability and risk of UXO encounter		Rating

⁶ The threat probability rating is extracted from CIRIA C681: Unexploded Ordnance (UXO)

	<div> <div>Rating 1 LOW</div> <div>Rating 2</div> <div>Rating 3</div> <div>Rating 4</div> <div>Rating 5 MODERATE</div> <div>Rating 6</div> <div>Rating 7</div> <div>Rating 8</div> <div>Rating 9 - 10 HIGH</div> </div>	
Recommendation		
Other Notes		

Note: Attach site plan and map of area assessed.

ANNEXURE G: SOLOMON POWER ESMP TEMPLATE

- A. Executive Summary
- B. Description of the project
 - 1. Project Background
 - 2. Project Component and Activities
 - 3. Implementation Arrangement and Schedule
 - 4. Project Benefit and Justification
- C. Anticipated Environmental Impacts and Mitigation Measures
 - 1. Impacts and Mitigation Measures Due to Pre-installation Activities
 - 2. Impacts and Mitigation Measures Due to Installation Activities
 - 3. Impacts and Mitigation Measures from Operation
 - 4. Impacts and Mitigation due to Decommissioning
 - 5. Cumulative Impacts
- D. Analysis of Alternative
- E. Consultation and Information Disclosure
 - 1. Stakeholders/Community Consultations
 - 2. Information Disclosure
- F. Environment and Social Management Plan
 - 1. Environment Management Plan
 - 2. Social Management Plan
 - 3. Implementation Arrangement
 - 4. Budget and Resources

Table of Environment and Social Management Plan

Project activity/ stage	Potential impact	Proposed mitigation measures	Mitigation Cost	Institutional Responsibility	Implementation Schedule

Table of Environmental Monitoring Plan

Environmental Features	Aspect to be monitored	Time and Frequency of Monitoring	Location	Monitoring Cost	Responsibility party for implementation

- G. Conclusion and Recommendation

ANNEXURE H: NGO ESMF CONSULTATION MINUTE

Date	23 rd Aug 2016, 8.30 am – 12.30 pm	
Location	Project Office, Hyundai Mall	
Objective	Consultation on Environmental Social Management Framework (ESMF) for the Community Benefit Share Pilot (CBSP)	
Participants	Name:	Organisation
	Joseph Majn	Solomon Islands Development Trust (SIDT)
	Elmah Panise	Live and Learn Solomon Islands
	Ernest Kothy	The Nature Conservancy (TNC) – Fisheries Officer
	Mandus Boseldu	The Nature Conservancy (TNC) – Mining Officer
	Willie Atu	The Nature Conservancy (TNC) – Country Director
	Tearo Beneteti	Landowners Advocacy and Legal Support Unit, Public Solicitors Office (LALSU)
	Joanne Zoleveke	Solomon Islands Red Cross Society (SI Red Cross)
	Senoveva Mauli	Solomon Islands Community Conservation Partnership (SICCP) – Country Director
	Corment Hadoraia	Kastom Garden Association (KGA)
	Casper Faasala	Solomon Islands National Council of Women
Presenters	Paul Roughan, Brally Tavalia, and Jen Radford	
Introduction (Project Office)	<p>Introduction of presenters. Self introduction from participants.</p> <p>Outline of agenda</p> <p>Purpose of meeting to engage with NGOs to discuss the draft ESMF and consider ways to improve it</p>	
Presentation (Project Office)	<p>Project Office presented on:</p> <ul style="list-style-type: none"> - Overview of Tina Hydro Project - Current Status of Project - Proposal for Community Benefit Share Fund - Proposal for Pilot CBSF with JSDF funding - Purpose of ESMF - Impacts and mitigation measures proposed in ESMF for four JSDF components 	

	<p>- Grievance Mechanism proposed in ESMF</p> <p>Power point of presentation available from Project Office.</p>
Feedback	Feedback and comments were requested and discussed during and after the presentation.
Comment 1 (Live and Learn) Relocation	Have communities discussed relocation? Live and Learn conducted ward planning with four communities on the Ngalimbiu after April 2014 flood and found relocation was not a priority for any of the communities. All wished to remain on their land and identified priorities of roads and clinics to improve infrastructure.
Comment 2 (TNC) Community Involvement	What the benefit share is trying to protect, the Project, is beyond three years. Current pilot does not involve community governance yet. Recommend using existing social mechanisms for benefit share like the Churches. Anyone blocking the road can spoil the Project. Heads of tribes, churches, and moro movement need to have the respect to prevent this. People don't feel like their connected to anything, to church or country. They feel disconnected.
Comment 3 (Live and Learn) Awareness for changing lifestyles	<p>We work with people in logging camps. A lot of things you discuss about employment affects people in their roles in their homes when mum and dad are working. Awareness and consultation about these changes is so important. People need a lot of awareness particularly when ways of living change. When Gold Ridge built re-location homes they didn't understand how people live. They built nice places but people wanted to continue to live with their pigs. When things go wrong people blame. If a drunk man is killed lying in a road, people blame the road. Need to change this mindset. Important to engage unemployed youth. Tap into NGOs, we have lots of experience. Interested to hear how community needs and priorities were identified?</p> <p>Project Office shared information about 100+ community consultations conducted.</p>
Comment 4 (Live and Learn) Grid connection	<p>When transmission lines are built, what happens if a family only has a leaf haus. Can they still be connected to the grid? Otherwise these will be left out.</p>
Comment 5 (SIELA) M&E	Have you considered involving an external consultant to conduct monitoring and evaluation of the Project. Would recommend a mid point evaluation and a final evaluation at project conclusion.
Comment 6	How does the Project Office deal with issues in the media?

Media	Project Office: Distrust is a huge issue. Policy of trust building with communities and Government to reduce impacts of individuals who bring complaints to the media. For many years working to prove that the Project follows up on every commitment.
Comment 7 Employment Priority	Will local communities be given priority for jobs with the hydro? These small things can create significant grievances. GPPOL do this well. Concerns about jobs will need to be handled by the Grievance Procedure. Project Office: Malango and Bahomea communities will be prioritised ahead of remainder of Solomon Island nationals, who will be prioritised ahead of international candidates.
Comment 8 (SIELA) Grievance Mechanism	Can you clarify how NGO's will be involved in the Grievance Procedure Project Office: Individuals may bring concerns directly to Project Office staff or Pilot contractors and consultations, however, for those that don't feel comfortable or wish for more support, NGOs may lodge grievances on their behalf.
Comment 9 (TNC) Sustainable Financing	Coming up with the right projects for the benefit share is important. And thinking about ongoing sustainable financing. Many fisheries centres were once set up. Then the idea was had to start seaweed farming in Wagina. This project involved all of the parts of the Wagina community and is highly successful and sustainable. TNC have kept Arnavons going for 15 years. Using a \$700,000 endowment fund provides US\$25,000 each year which keep the Arnavons going, potentially forever. If the project were to set up a Protected Area consider sustainable financing. Protected Areas Act has a sustainable financing mechanism but Government isn't using it. This is something donors could support. The mechanics of setting up a sustainable financing arrangement needs support but it has been successful elsewhere in the Pacific and has big potential here. All ideas for the community benefit fund need thought and sustainability.
Comment 10 (TNC) Government support	Communities have a lot of good ideas. But good ideas need Government support. Communities can't appropriately implement them without support.
Comment 11 (SIDT) Community engagement	When communities talk about projects it's about money. What is done as a pilot, even with 100s of consultations, really needs to go into the minds of the people. The framework presented is very good. 100%. But the benefit share really needs to go into people's common understanding. Without feelings of ownership it isn't sustainable. People can have big dollar sign

	<p>ideas. Need to talk about people's minds and behaviour. The Project Office has good strategies here.</p> <p>SIDT has partnered with Rural Development Program (RDT). No real progress. Just winning another election. SIDT has done scorecards for RDP projects.</p> <p>This hydro project has had proper groundwork. From 2010. The question is how we can get one proper understanding.</p> <p>You've done 100% maintaining mindset of communities</p>
Comment 12 (National Council of Women) Investment objectives	<p>Need to really consider the aim of any investments. In other places, investment has brought negative outcomes, where people stop cooking or gardening.</p> <p>We need to look at investment in terms of investment in life. Investment in good practice. Investment in human growth. Investment in respect.</p> <p>Money sometimes creates negative outcomes. Parents not looking after their children properly. Money to buy motorcycles that cause accidents. There's no benefit if the money is used wrongly.</p> <p>Could Tina landowners consider starting their own bank?</p>
Comment 13 (TNC) Skills training	<p>Who is able to access the employment and skills training?</p> <p>Project Office: The "hosts", being the relevant 27 tribes and the permitted settlers.</p> <p>The aim is to bring the community together. Recognising that the broad community is made up of many different villages but bringing the community focus together. That would be the goal of the benefit share.</p>
Comment 14 (Live and Learn)	<p>Have scholarships for students been considered?</p> <p>Project Office: Yes, not an initial priority for the pilot for two reasons (1) need to focus first on bringing the base of education up before individuals are ready for scholarships. (2) Scholarships for overseas study are very expensive, using up a large parcels of potential funds, but can also be divisive in a community as only a few benefit. Instead looking to use the Pilot funds to promote projects that build community cohesiveness.</p>
Comment 15 (SI Red Cross) Community engagement	<p>Innovative way to go about things.</p> <p>Very good – looking at dealing with problems. You are considering what communities actually want and looking at lessons learned from Gold Ridge.</p> <p>If it's implemented the way you have presented, it's great.</p> <p>The name pilot is fitting because it can be used as an example by us NGOs. What sometimes some of us fail in is implementing what communities actually want, rather than what we go to them to discuss.</p>

	<p>This could be a way forward to changing mindsets. Like you said, can do lots of awareness but not change any mindsets.</p> <p>High hopes for this pilot. If it turns out to be good we can use it as a way forward. Next level.</p>
<p>Comment 16 (SI Red Cross) NGO involvement</p>	<p>Red Cross also do WASH projects. We can do contracting work on WASH projects. Also Live and Learn.</p> <p>If you are considering outsourcing tasks, we have experience training volunteers, particularly in health.</p>
<p>Comment 17 (SI Red Cross)</p>	<p>Could consider including evacuation centres/community centres as component of benefit share pilot. Schools are ordinarily used as evacuation centres but it creates a problem with people stay in the centres for a long time. What is needed is a multi-purpose building away from hazards, safe from floods and tsunamis.</p> <p>Understand from the presentation that the dam will not prevent flooding along the Ngalmibiu. SI Red Cross has experience constructing one such centre which operates as a community centre for fundraising, womens groups, youth activities, space for children with special needs, and can be called upon as an evacuation centre when needed. It is important that the community sets who can use the space and how any money from functions is to be used.</p>
<p>Comment 18 (TNC)</p>	<p>Will be vital to the pilot project that the budgets are prepared carefully. The worst outcome of the pilot would be to see promised works unfinished.</p>
<p>Comment 19 (National Council of Women)</p>	<p>Consider including a scholarship specifically for women's education. We want the hydro to make a difference.</p>
<p>Comment 20 (TNC) Church involvement</p>	<p>If you look at the background of the well educated role models in these communities, like Dr Patricia Rhody or Justice Denni, you'll see that their backgrounds to get there was through the churches. Donors don't normally use Churches but that's how people come up. Important to engage with them.</p> <p>Live and Learn: In Isabel the Churches really bring people together and lead.</p> <p>When we go in to do work such as yearly planning, we go through the Church and its makes the task far quicker and easier. Also recommend working through the Churches.</p>
<p>Conclusion and wrap up</p>	<p>Project Office thanked all for their feedback and participation. Feedback now to be incorporated into the draft document.</p>

(Project Office)	<p>Next steps, Project Office to:</p> <ul style="list-style-type: none"> - Send copy of draft ESMF document to participant emails - Send link to draft ESIA for hydro project on World Bank website to emails <p>Any further comments welcome by email or in person.</p> <p>NGOs will be consulted further in designing the benefit share fund.</p>
-------------------------	---

ANNEXURE I: COMMUNITY ESMF CONSULTATION MINUTE

Date	22 nd Aug 2016, 2.30 – 4.30 pm
Location	Project Office, Hyundai Mall
Objective	Consultation with community representatives on Environmental Social Management Framework (ESMF) for the Community Benefit Share Pilot (CBSP)
Participants	15+ representatives from Bahomea and Malango Communities
Presenters	Jen Radford, Paul Roughan, Brally Tavalia
Introduction (Project Office)	<p>Introductions</p> <p>Outline of agenda</p> <p>Purpose of meeting to:</p> <ul style="list-style-type: none"> - discuss the benefit share fund and the proposed pilot project; - Discuss the environmental and social risks of the pilot and ways of reducing these - Discuss the complaints/grievance process
Presentation (Project Office)	<p>Presentation given on:</p> <ul style="list-style-type: none"> - Proposal for Community Benefit Share Fund - Proposal for Pilot CBSF with JSDF funding - Purpose of ESMF - Impacts and mitigation measures proposed in ESMF for four JSDF components - Grievance Mechanism proposed in ESMF - Update of Tina Hydro Project status <p>Power point of presentation available from Project Office.</p>
Feedback	Feedback and comments requested and discussed during and after the presentation.
Comment 1	Firstly, information is familiar, but clearer understanding now. Understand that pilot will start with construction and finish by the time power comes on.
Comment 2	No big risks. Except water supply will need careful site visits.
Comment 3	We expect to be able to access the ESIA for the main project and to openly discuss this in time.
Comment 4	Employment is big need. We need to see this in the ESIA report, it should include unemployment details, 70-80% in our area. It's a really good idea to

	include training in the Pilot. Try to design the training for permanent employment, beyond the three years of dam construction.
Comment 5	An Education Authority established for the area during the pilot project would assist with preparing youth for jobs in the future.
Comment 6	When this starts there will be three bodies, JSDF, the pilot project office and the communities. How do we connect these three?
Comment 7	Understanding community structure/set up will be central to the design of the main benefit share.
Comment 8	Very good presentation. If this funding is ready that would be good. This project office is to deal with all of these things. The community already has a committee set up for water supplies. They should be involved. Also, there should be a separate office to manage this pilot project employing people from the area. A new office apart from the main project office will mean that this project doesn't disturb the plans for the main hydro.
Comment 9 (Engaging with local community structures)	<p>Social risks will be key. We already have bodies like the churches, chiefs and NGOs to deal with issues that arise. The people dealing with these issues need to be right people.</p> <p>Solomon Islands is torn between three cultures, local, Western and Eastern. Eastern culture, already ready to move as a wave. The risks of this pilot are all minor compared to logging. This isn't new, we are used to projects such as Gold Ridge, Logging and Tina Hydro. Here there are a lot of wrongs done right. But still people are fighting. We will need a lot more consultation on engaging communities as part of the benefit share design. It will be very hard to design a perfect one. It needs to really study current community structures.</p>
Comment 10	For the water supply, there are some countries where dam water is taken for water supply and farming. Sometimes the water can run dry.
Comment 11 (Job Training)	<p>Employment is important. 80% have no experience in working. Those who are educated well can work. This presentation and discussion answers a lot of questions. Really appreciate. Very good.</p> <p>The training component of the Pilot is very good. Answers the view of the community. There are lots of short courses in town. Let's use them. I was already starting to refer people to these and there were complaints about the issue of training. This answers them.</p> <p>This is especially good for women in the communities.</p>

Comment 12 (Electricity use and safety awareness)	People are quite frightened of electricity. Women want access to electricity to make uniforms with sewing machines etc. But we're scared. Some training on the use of electricity would be good before it is connected. So that people aren't frightened and know how to use it.
Comment 13	<p>We live in fear and risk in our communities already. We don't have employment so sustainable farming must continue. But the land is damaged and we are facing poverty. All of our resources have been used, our land has been logged, and we haven't put anything back. We need the heart of yours to fix this. A protected area is very important. After Gold Ridge there was no difference to the area. Logging is risking our long term survival. Timber rights aren't signed by landowners but by trustees. Can Project Office look at the Act to create a Protected Area.</p> <p>Project Office: Protected areas need to be applied for and agreed to by landowners. Project Office is always looking for opportunities to support this, but needs to be led by landowners.</p>
Comment 14	Job training for permanent jobs is the main and most important part of the pilot program. Make sure that we are not left with poverty.
Comment 15	<p>We started talking about this project a few years ago. A lot of our boys used to work at Gold Ridge. Now we are back at square one. Education is key. Assistance for schools is important.</p> <p>When we went to Fiji many of the landowners we spoke to were unhappy with their arrangements. Here though we have a lot of engagement.</p> <p>By the time the project is done we want to see something positive. How will we manage this 15% company? How will we make sure the money keeps going? We need these benefits after construction.</p>
Comment 16	One way to minimise the issue of unemployment is for the Project Office to ask SIG to speed up Gold Ridge and GPPOL
Comment 17	If we have a good water supply, road and electricity then we will have opportunities come up. Understand the road is only planned for Bahomea at this stage, but other changes may come.
Comment 18	I wish the benefit share could create an Education Authority just for us that could have Government funding as well as benefit share funding. The kindies can create jobs for women. If we have our own authority we can run all these things.

Comment 19	We talk about roads and electricity but these are expensive. These are a challenge for us for the future. Employment is the priority. A man with a masters degree can work for as little as \$300 a month. But ultimately we need training to move onto masters, PHD, professional skills.
Comment 20	The Church and the House of Chiefs can deal with a lot of issues that arise in the community. But for issues that arise in relation to the project, can community liaison officers be involved in resolving these?
Comment 21	Thanks for a good presentation. Would like to emphasise training and employment. Our natural resources are gone. This needs to be our focus now.
Project Office Conclusion	<p>Thank you all for your contributions and feedback. Value your time and appreciate your input. To answer some of the questions raised, job applications will be open firstly to the community as a priority. Hearing that training and better education are the most important focuses.</p> <p>We'll put these ideas into our reports.</p> <p>The next consultation with the community liaison assistants will take place on Wednesday 24 August at 10 AM.</p>