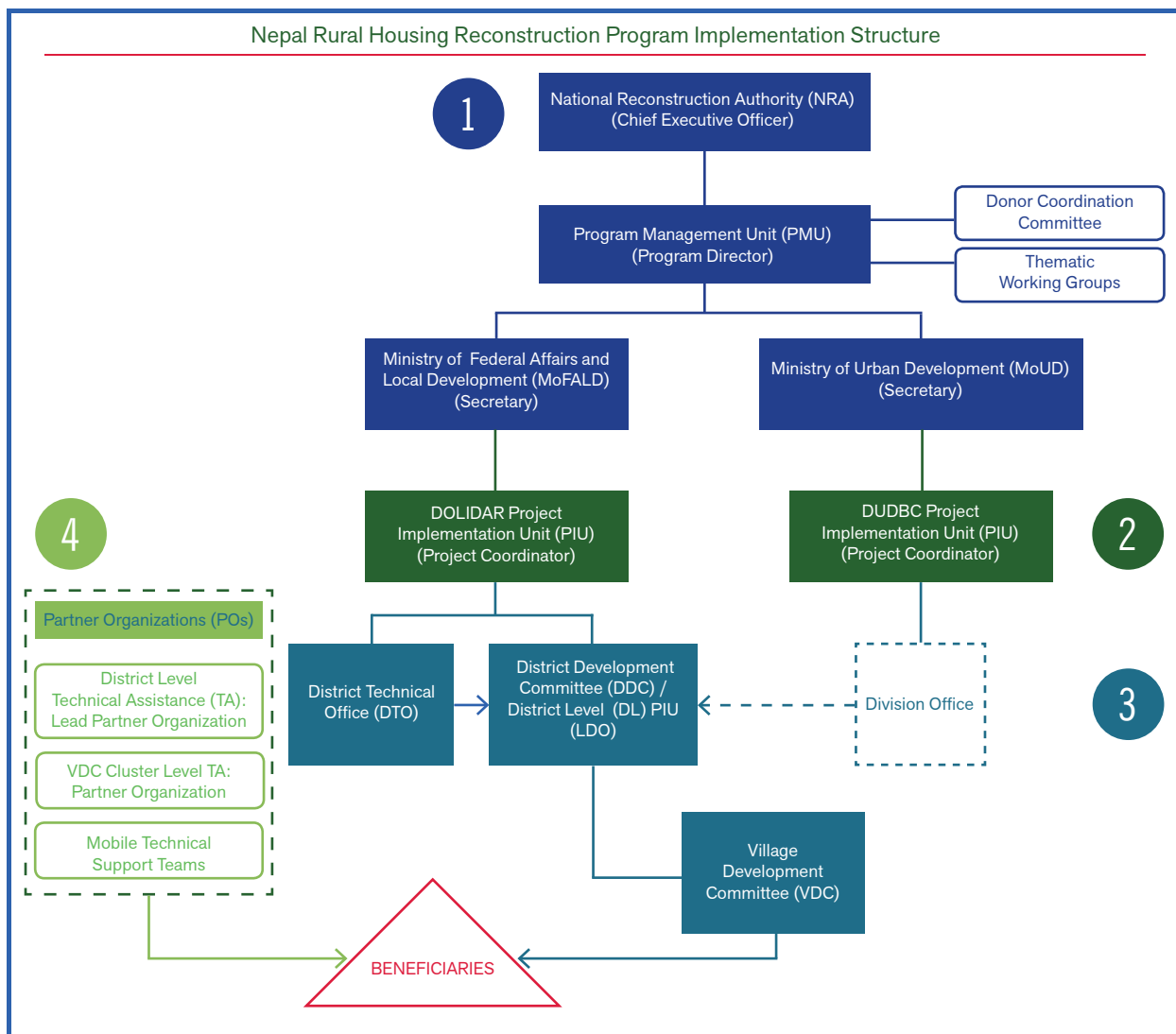




Nepal Rural Housing Reconstruction Program

Program's Implementation Structure: Roles & Responsibilities

Under the leadership of the Government of Nepal, the Rural Housing Reconstruction Program's implementation has been carefully structured to reflect the program's operating principles as well as the conditions on the ground. As shown in the diagram below, there is both flexibility as well as regular monitoring and evaluation to assure that implementation is responsive to the needs of beneficiaries. Best practices have been gleaned from other international reconstruction experiences and incorporated into the implementation structure and procedures for the Rural Housing Reconstruction Program.



1 NATIONAL LEVEL

National Reconstruction Authority (NRA)

Leads the Housing Reconstruction Program Nationally

Program Management Unit (PMU)

Leads the Rural Housing Reconstruction Program, and Coordinates program activities and oversees the reconstruction process in rural areas

Donor Coordination Committee (DCC). Under the PMU, the DCC provides a platform for the Government of Nepal's Donor Coordination of the overall programmatic strategy

Project Management Units (PMU) Thematic Working Groups. Supports the overall programmatic strategy in specific areas such as: technical information, capacity development, communication and outreach, and coordination, reporting monitoring and evaluation, among others.

2 GoN PROJECT IMPLEMENTATION UNITS (PIUs)

Project Implementation Unit (PIU)

Coordinates & oversees implementation at the project level. PIUs are established under the Program Management Unit and under the overall guidance and coordination of the respective ministries and implementing agencies

Department of Urban Development and Guild Reconstruction (DUDBC) Project Implementing Unit (PIU). Overall, will be responsible for establishing housing construction standards, managing Partner Organizations and overseeing housing reconstruction

Department of Local Infrastructure Development and Agricultural Roads (DoLIDAR) Project Implementing Unit (PIU). Overall, will be responsible for the provision of housing reconstruction grants, and management of household and beneficiary databases, including feedback mechanisms and hosting survey data

3 GoN SUB NATIONAL LEVEL

Fourteen District Development Committees (DDCs) (or District Level Project Implementing Units (DL PIUs))

Responsible for overall development of activities at the District Level

The Village Development Committees (VDCs). Coordinates village-level activities

4 PARTNER ORGANIZATIONS (POs)

POs will be contracted by the program (through DoLIDAR PIU) to carry out field-level project activities with regard to enrollment, training, mobilization, orientation, and the mobile technical support teams

This material has been funded through the Nepal Rural Housing Reconstruction Program Multi-Donor Trust Fund, thanks to the contributions of: US Agency for International Development (USAID), Swiss Agency for Development and Cooperation (SDC) and the World Bank. The views expressed do not necessarily reflect the US or Swiss government's official policies or the policies of the World Bank and its Board of Executive Directors.

January 2016

FUNDED BY



Schweizerische Eidgenossenschaft
Confédération suisse
Confederazione Svizzera
Confederaziun svizra

Swiss Agency for Development
and Cooperation SDC



USAID
FROM THE AMERICAN PEOPLE



MANAGED BY
THE WORLD BANK
IBRD • IDA | WORLD BANK GROUP