

## TC Document

### I. Basic Information for TC

▪ Country/Region:	BELIZE
▪ TC Name:	Support to the Sustainable and Inclusive Urban Development Program
▪ TC Number:	BL-T1168
▪ Team Leader/Members:	Soulier Faure, Martin Nicolas (CSD/HUD) Team Leader; Saiz, Ana Maria (SCL/MIG) Alternate Team Leader; Rivero, Ruthann Rachel (CID/CBL); Levy, Denise Urias (CSD/RND); Watson, Brodrick Raylando (VPC/FMP); Riquelme, Rodrigo (INE/WSA); Samayoa Juarez, Jorge Omar (CSD/RND); Alleng, Gerard P. (CSD/CCS); Us Alvarez, Hugo Amador (SCL/GDI); Del Castillo Sofia (CSD/HUD); Lugo Moreno, Monica Bibiana (LEG/SGO); Bonilla Merino Arturo Francisco (LEG/SGO); Avila, Francy Dianela (CSD/HUD); Perez Moreno Silvia (CSD/HUD); De Barros Torres Gabriel (CSD/HUD); Lopez Aguilar Natalia (CSD/HUD); Lunstedt Tapia, Christian (VPC/FMP); Alejandra Catacolí and Adriana Zambrano (VPS/ESG)
▪ Taxonomy:	Operational Support
▪ Operation Supported by the TC:	BL-L1046 /BL-J0007
▪ Date of TC Abstract authorization:	07 Nov 2023
▪ Beneficiary:	Government of Belize - Central Executing Unit
▪ Executing Agency and contact name:	Inter-American Development Bank
▪ Donors providing funding:	OC SDP Window 2 - Sustainability(W2A)
▪ IDB Funding Requested:	US\$450,000.00
▪ Local counterpart funding, if any:	US\$0
▪ Disbursement period (which includes Execution period):	24 months
▪ Required start date:	July 2024
▪ Types of consultants:	Individuals; Firms
▪ Prepared by Unit:	CSD/HUD-Housing & Urban Development
▪ Unit of Disbursement Responsibility:	CSD/HUD-Housing & Urban Development
▪ TC included in Country Strategy (y/n):	No
▪ TC included in CPD (y/n):	No
▪ Alignment to the IDB Group Institutional Strategy 2024-2030 “Transforming for Scale and Impact”:	<p>(i) Reduce poverty and inequality; (ii) Address climate change and (iii) Bolster sustainable regional growth</p> <p>Operational focus areas: (i) Biodiversity, natural capital, and climate action; (ii) Gender equality and inclusion of diverse population groups; (iii) Institutional capacity, rule of law, and citizen security; (iv) Social protection and human capital development; (v) Productive development and innovation through the private sector; and (vi) Sustainable, resilient, and inclusive infrastructure.</p> <p>Diversity; Environmental sustainability; Gender equality; Institutional capacity and rule of law; Productivity and innovation; Social inclusion and equality</p>

### II. Description of the Associated Loan

2.1 **Sustainable and Inclusive Urban Development Program (BL-L1046 and BL-J0007).** In line with the government plan to transform Belize into a more

inclusive and sustainable country (Plan Belize MTDS 2022-2026) and by the objective of the Country Strategy 2022-2025 to achieve robust, inclusive, and sustainable growth, Belizean authorities seek assistance from the Bank to design and implement multisectoral and sustainable interventions to trigger the development of northern Belize,<sup>1</sup> and to improve social sustainability by integrating vulnerable migrant populations and host communities.<sup>2</sup> In response, the Bank recently approved the Operation “Sustainable and Inclusive Urban Development Program” (BL-L1046 & BL-J0007). The specific objectives are (i) to improve access to selected urban services, (ii) to support local economic growth, and (iii) to facilitate the social and economic integration of vulnerable populations, such as migrants and women.

- 2.2 The program will be used as a pilot project to learn from its implementation and be able to replicate promising practices in future interventions. Besides the mentioned development challenges, the three major towns of northern Belize also present the opportunity to learn from three different urban typologies (coastal, island, and inland) to improve future interventions in other urban areas of the country. Jointly work along with the Ministry of Rural Transformation, Community Development, Labour and Local Government (MRTCDLLG)<sup>3</sup>, will reinforce the catalytic purpose of this Program, generating capabilities to replicate activities across the Country with own or external resources. The Program will complement government’s current efforts to implement the MTDS in these three towns.<sup>4</sup>
- 2.3 The program BL-1046 is structured into two components: (i) Institutional Strengthening for Sustainable Development, aiming to strengthen municipal and national capacities through (a) the elaboration of municipal institutional strengthening plans<sup>5</sup>, municipal development plans, sustainable zoning plans with a gender approach and climate change considerations,<sup>6</sup> coastal management plans, public-private collaboration plans, the implementation of digital tools for sustainable urban development<sup>7</sup>, and specific activities to support the integration of migrants and their host communities<sup>8</sup>; and (ii) Sustainable Urban Investments, with two types of interventions: (a) neighborhood upgrading projects in vulnerable<sup>9</sup> communities; and (b) creating or upgrading public spaces and public facilities in prioritized areas in terms of the local economy or tourism attraction. Table 1 presents projects currently prioritized by the municipalities.

**Table 1. Sample of Projects**

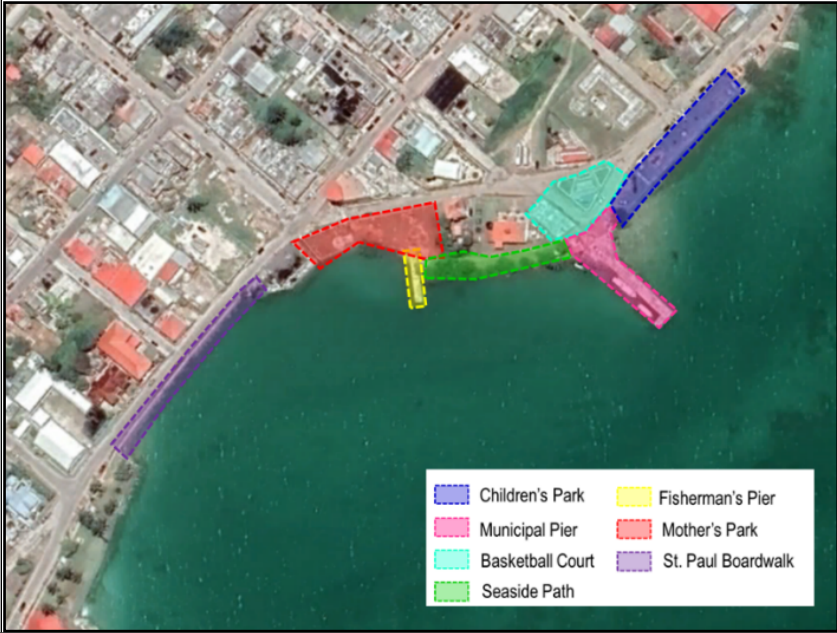
<b>Resilient Intervention</b>	<b>Components</b>	<b>Estimated cost (US\$)</b>
<b>COROZAL</b>		<b>1,877,200</b>
<b>Comprehensive public space expansion and upgrading<sup>(a)</sup></b>	Mothers’ Park upgrading	131,500

<sup>1</sup> Request letter from the MFEDI (March 2023).

<sup>2</sup> Additional request letter from the MFEDI (August 2023).

<sup>3</sup> The Ministry of Local Government of the MRTCLLG is committed to strengthening local authorities to empower communities to address their development needs through policy development, guidance and support, with a view to reducing social, economic and environmental inequities.

	Children's Park upgrading	192,500
	Basketball court and Amphitheater area enhancement	258,500
	Seaside Pathway	165,000
	Fisherman's Pier upgrading	79,200
	Municipal pier upgrading and welcome center	225,500
	St. Paul's Boardwalk (seawall protection)	825,000



<b>ORANGE WALK</b>		<b>4,614,500</b>
--------------------	--	------------------

<b>Initial interventions of the River Walk Development Strategy</b>	1. Two new public spaces connected by shared street <sup>(b)</sup> interventions	
---	--	--

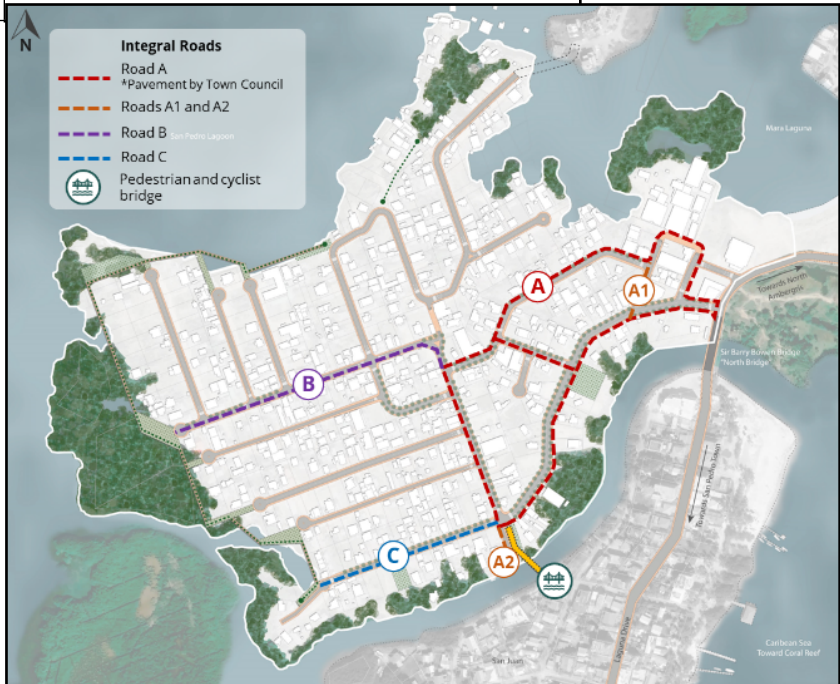
- 4 The latest Public Sector Investment Program presents ongoing, in-pipeline, and proposed investments of the Plan Belize in these three towns for a total of USD 175 million through 2026. These investments are funded by several sources (CABEI, CDB, EIB, and GCF, among others).
- 5 Including diagnosis and assessment of the councils' capacity to enhance its administrative and managerial functions, such as management of municipal operations, financial management, traffic management, resources, tools/equipment, and training. This also includes councils' capacity to utilize digital tools for i) geo-spatial mapping for councils' assets (i.e., public spaces), ii) digitization of municipal services, iii) business mapping to support liquor license and trade license management, iv) GIS for property tax management, etc.
- 6 Urban planning tools with a gender approach are a key component of our strategy. These tools assess specific barriers or problems that women face in urban settings compared to men. They include actions or activities oriented to overcome the barriers and problems identified, demonstrating our commitment to inclusivity and equality.
- 7 Among other initiatives, the program will encourage the use of the toolkit developed by IDB's Cities LAB: (i) Automatic monitoring of land use changes; (ii) UrbanPy (library of functions to estimate accessibility to services); (iii) MAIIA (Mapping of Informal Settlements with Artificial Intelligence); and (iv) URSA (Urban Reporting based on Satellite Analysis, including historical and future urban footprint growth and land cover).
- 8 Such as the design and dissemination of information materials to help migrants access services, English courses for language integration, and workshops and training courses to develop skills in digital tools and financial education, among others.
- 9 Vulnerability is characterized by socio-economic factors and natural risks.

	a. Tourist Park	528,000
	b. Independence Park upgrading	231,000
	c. Main St., Church St., and Park Street restoration	1,160,500
	2. Naranjal Street upgrade over the New River <sup>(c)</sup>	1,001,000
<b>New Public Market and multipurpose public space.</b>	Construction of market infrastructure	1,144,000
	Sports Complex	550,000



<b>SAN PEDRO</b>		<b>2,422,234</b>
------------------	--	------------------

<b>Integral intervention in the San Mateo neighborhood</b>	Phase 1: Pavement, drainage, water supply, sewage <sup>(d)</sup> , public lighting, public space, sidewalks, pedestrian, and cyclist bridge	2,422,234
--	---	-----------



	<b>TOTAL</b>
	<b>8,913,934</b>

- a) Activities/investments: pier refresh, tourism facilities, street vendor facilities, playground, basketball court, amphitheater, tree planting, public lighting, public restrooms, and new boardwalk as seawall protection.
- b) Activities/investments: sidewalk widening, public lighting, stormwater retrofit, and tree planting.
- c) Activities/investments: permeable pavement, drainage, boardwalk, tree planting, public lighting, facilities for street vendors.
- d) Projects of the sample consider the improvement in sewage coverage in San Pedro in approximately 206 new connections, increasing total connections from 1,222 to 1,428 (from 20% to approximately 23%)

### III. Objectives and Justification of this TC

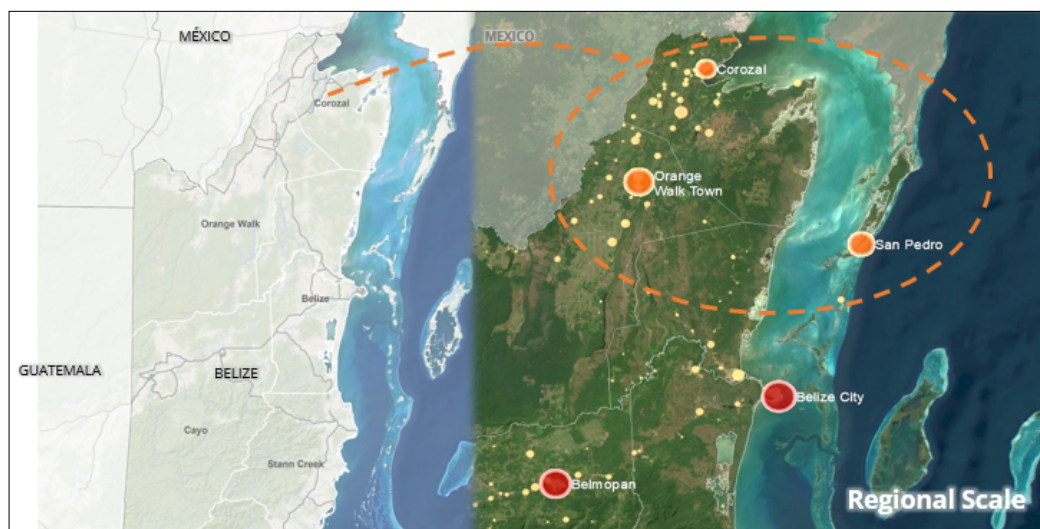
3.1 **Objective.** This technical cooperation (TC) aims to support the implementation of the Sustainable and Inclusive Urban Development Program (BL-L1046 & BL-J0007) by elaborating pre-investment studies for its eligible projects and developing coordination activities for its implementation.

3.2 **Development Challenges.** The population in Belize is growing fast, showing one of the highest annual growth rates in the region (1.52%)<sup>10</sup>. The country's two city and seven town councils, responsible for urban regulation, construction permits, and local urban services, do not have adequate tools and capacities to lead a holistic, sustainable<sup>11</sup> development. These municipalities face specific interconnected challenges, such as improving the provision of urban services, local economic diversity, and community integration while also seeking to increase their resilience and capabilities across the board to manage growth effectively.

<sup>10</sup> United Nations Department of Economic and Social Affairs: "Why population growth matters for sustainable development"; February 2022.

<sup>11</sup> In this document, the term "sustainable" is used in its broad sense, including environmental, social, urban, and economic/financial aspects.

**Figure 1. Location**



Source: IDOM (2023)

3.3 Unplanned urban growth and inadequate management have aggravated the deficit in providing urban services (Table 1). For example, only 10% of the streets in these three cities have stormwater drains, leading to frequent floods during heavy rain episodes. Similarly, lacking quality public spaces, such as green areas, limits social interactions and integration. Naturally, these deficits are more noticeable in vulnerable areas<sup>12</sup>, where many poor and displaced families live.

**Table 2. Selected Urban Services Indicators per Municipality**

Indicator	Orange Walk <sup>(a)</sup>	Corozal <sup>(b)</sup>	San Pedro <sup>(c)</sup>	Belize City
Paved roads (district)	11,7% <sup>(d)</sup>	7,7% <sup>(d)</sup>	8%	42,3% <sup>(d)</sup>
Drinking water <sup>(e)</sup>	87.6%	81.4%	83%	90% <sup>(f)</sup>
Sewer System	0% (94,5% septic tanks)	0%	20%	35% <sup>(f)</sup>
Drainage <sup>(g)</sup>	76% (15% concrete)	n/a	5.3% concrete	n/a
Public spaces	3.96 sq mt/ inhabitant	n/a	4.05 sq mt / inhabitant	n/a
Qualified green areas <sup>(h)</sup>	n/a	n/a	0.8 sq mt / inhabitant	3.8 sq mt/ inhabitant <sup>(f)</sup>
Bike Lanes	0 km	0 km	0 km	0 km

<sup>(a)</sup> Investment and Organizational Development Plan for Orange Walk (Economía Urbana; 2023).

<sup>(b)</sup> Corozal Town Municipal Development Plan (MDP; 2013).

<sup>(c)</sup> IDOM 2023.

<sup>(d)</sup> [Annual technical report of the Ministry of Infrastructure Development and Housing \(2021\)](#). Respectively, gravel roads are 56.8%, 84.4%, and 89.5%, and earth roads are 0.8%, 3.9 and 2.8%.

<sup>12</sup> In San Mateo, a vulnerable neighborhood of San Pedro with 2,329 inhabitants, there is no coverage of paved roads, sidewalks, sewage, stormwater drainage, bike lanes, street vegetation, nor public spaces (IDOM; 2023).

- (e) Public or private piped into dwelling or yard (District's totals); 2010 Census.
- (f) [Department of Environment - Belize](#).
- (g) Permeable and impermeable drainage systems. Concrete drains include half-round, underdrains, catch pits, precast concrete trap drains, and V-shaped block drains.
- (h) The World Health Organization recommended the availability of a minimum of 9 m<sup>2</sup> of green space per individual (Health Indicators of Sustainable Cities in the Context of the Rio+20 UN Conference on Sustainable Development. WHO; Geneva, Switzerland: 2012).

- 3.4 In 2022, intra-regional migrants comprised approximately 12% of Belize's population.<sup>13</sup> In recent years, population growth has been explained mainly through migration factors: between 2019 and 2022, the population grew by 2.8%, primarily due to immigration.<sup>14</sup> Since migrants are predominantly settling in precarious areas, this rapid influx intensifies the challenges in urban services provision, placing a strain on Belize's infrastructure.<sup>15</sup> In the vulnerable San Mateo (San Pedro) neighborhood, 17% of the population is foreign-born. They mainly migrated for economic reasons, but language barriers limit their access to skills development, employment, and social networks.
- 3.5 Additionally, while women represent about 51% of all migrants (SIB, 2021), Belize registered one of the lowest gender parity scores of Latin America and the Caribbean (LAC) in 2023 (0.696).<sup>16</sup> Even though women have higher levels of education than men, their labor-market participation, employment levels, and wages are lower than men's (IDB, 2020). Across the LAC region, public infrastructure poses many accessibility challenges for people with disabilities.<sup>17</sup> In Belize, the current legal framework lacks robust regulations ensuring infrastructure designs adhere to universal accessibility standards, thereby denying people with disabilities access to crucial services.<sup>18</sup>
- 3.6 In addition to physical and social elements, urban sustainability is also compromised by economic factors. The local economy's dependence on a single source of income threatens economic performance and sustainable growth. 85% of the population in Corozal and Orange Walk (OW) depends on the sugar sector.<sup>19</sup> Tourism holds a great promise to help diversify the economy of these small towns. Still, the lack of incentives to attract private investments and adequate infrastructure to improve the commercialization of traditional products and services is why both districts receive just 4% of the national tourists' visits. To enhance the competitiveness of the tourism sector, Belize needs not only better urban planning, land use regulation, and access to urban services but also to improve the availability and quality of Belizean-made handicrafts and the commercialization of traditional products and to deeper integrate local

---

<sup>13</sup> IDB Calculation based on data from the Statistical Institute of Belize (SIB).

<sup>14</sup> The percentage increase represents the change in the share of immigrant stocks for the period 2019-2022. IDB calculation based on data from the SIB.

<sup>15</sup> Even though there is an information gap about migrants' access to basic services, surveys conducted by CID-Gallup in 2010, point out that access to water services by migrants is about 64%, significantly lower than the national average.

<sup>16</sup> Global Gender Gap Report, World Economic Forum (WEF), 2023.

<sup>17</sup> [Breaking Barriers, WB, 2021](#)

<sup>18</sup> ["Marco legal de los derechos de las personas con discapacidad: América Latina y El Caribe", Bregaglio, IDB 2021.](#)

<sup>19</sup> The sector is estimated to account for about 4–5% of total GDP and 8% of total employment. (Can Belize cope with the new world sugar market? IMF 2016).

communities and artisans into the tourism value chain.<sup>20</sup> In OW, for example, local vendors in the public market carry out their activities in poor conditions, exposed to the sun and rain, without solid flooring, drinking water, or safe electricity.<sup>21</sup>

- 3.7 Across these challenges, Belize faces significant climate change risks, including hurricanes, flooding, rising sea levels, coastal erosion, coral bleaching, and droughts<sup>22</sup>, alongside extreme temperature events.<sup>23</sup> Corozal Town, located in the low-lying Corozal district, is highly flood-prone, with ongoing coastal erosion threatening its sea wall integrity (MDP, 2013). Climate change exacerbates impacts of coastal hazards, such as erosion and flooding, on property, infrastructure, and communities.<sup>24</sup> Orange Walk, situated between wetlands and the New River, experiences annual floods affecting over 100 families<sup>25</sup> Ambergris Caye is susceptible to hurricanes, floods, and other disasters.<sup>26</sup> While 58.2% of the Caye is affected by flood-prone areas, the main risks identified are storm surge, strong winds, and coastal erosion (IDOM, 2023). While the National Government handles disaster preparedness and response, municipalities are critical in bolstering resilience through green infrastructure, sustainable planning, and proactive measures.
- 3.8 The Ministry of Finance, Economic Development, and Investment (MFEDI) will act as the Executing Agency and be responsible for the Program. The implementation unit will be the Central Executing Unit (CEU) within the Ministry of Economic Development (MED). The Government needs support to strengthen the readiness of projects to be financed by the operation and the coordination of activities to implement both components.
- 3.9 **Justification.** This TC will provide resources and expertise to complement the efforts taken under Component I and ensure the readiness of projects to be implemented under Component II of the Program BL-L1046 & BL-J0007. In this sense, the Government requested technical cooperation resources for up to USD 0.5 million to broaden the operation's scope and strengthen execution capacity.
- 3.10 **Strategic Alignment.** This TC is consistent with the IDB Group Institutional Strategy: Transforming for Scale and Impact (CA-631) and is aligned with the objectives to (i) reduce poverty and inequality by designing pre-investment studies for vulnerable neighborhoods improvement, creating inclusive and safe public spaces, and developing capacity building activities including migrants, women and people with disabilities; (ii) address climate change by strengthening local governments in sustainable planning and designing resilient investments in urban areas subject to climate risk; and (iii) bolster sustainable regional growth

---

<sup>20</sup> [Belize Tourism & Conservation Adaptation Plans and National Sustainable Tourism Master Plan for Belize 2030 \(NSTMP\)](#)

<sup>21</sup> OW Town Council information and field visits.

<sup>22</sup> IDB Country Strategy 2022-2025.

<sup>23</sup> [WB](#), 2023.

<sup>24</sup> IDB BL-T1080 ([ATN/MD-15572-BL](#) and [ATN/OC-15573-BL](#)): Final Report "Bay Shoreline Management Plan: Planning for Climate Resilience" (2018).

<sup>25</sup> Orange Walk Flood Mitigation Concept Note (Catalyst Solutions CG; 2022).

<sup>26</sup> From 62 events that occurred in the past, 67% were hurricanes, 22% were floods, and the remaining 11% were epidemics and fires (DesInvetar Sendai developed by UNDRR; July 2023).



by designing resilient and inclusive infrastructure in prioritized areas to foster local economic growth. The TC is also aligned with the operational focus areas of (i) biodiversity, natural capital, and climate action; (ii) gender equality and inclusion of diverse population groups; (iii) institutional capacity, rule of law, and citizen security; (iv) social protection and human capital development; (v) productive development and innovation through the private sector; and (vi) sustainable, resilient, and inclusive infrastructure.

- 3.11 This TC is aligned with the Country Strategy with Belize 2022-2025 (GN-3086) with the strategic objective of supporting the reactivation of critical economic sectors through the continued provision of services, improving their resilience to natural hazards and climate change. It also aligns with the four objectives of the Housing and Urban Development Sector Framework Document (GN-2732-11): (i) overcoming structural social exclusion by upgrading underserved and informal neighborhoods and expanding the provision of safe public spaces for all; (ii) promoting disaster and climate change resilience; (iii) boosting urban productivity by supporting comprehensive urban infrastructure, streamlining urban regulations, and promoting innovation in the built environment; and (iv) promoting good urban governance by strengthening fiscal and data management capacity. Moreover, this program aligns with the Migration Action Framework (GN3021) by advocating for improved access to urban services for the migrant population, facilitating their integration into economic opportunities, and fostering social cohesion with host communities. Finally, this operation also aligns with the first line of action of the Climate Change Sector Framework Document (GN-2835-13), adapting and building climate resilience through the mainstreaming of climate change considerations in planning and specific design of infrastructure at the national and local level, improving disaster risk assessment, reduction, and management, conserving and restoring natural ecosystems as mangroves, and using the territorial approach to build climate resilience. The pre-investment studies also align with the following prioritized areas of the OC SDP Window 2 Fund, Sustainability (W2A): (i) climate change and environmental sustainability; (ii) resilient and sustainable infrastructure; (iii) effective, efficient, and transparent institutions; and (iv) inclusive social development (including gender and diversity).<sup>27</sup>
- 3.12 **Beneficiaries.** This TC will benefit the Government of Belize, specifically the Central Executing Unit (CEU) among the MFEDI, as it will support the readiness of the projects to be financed through loan operations. Also, it is expected to deliver capacity strengthening activities and workshops to the CEU members<sup>28</sup> to support the execution of the loan operation. The Loan Operation will benefit around 40,000 residents within the urban limits of OW, Corozal, and San Pedro towns.
- 3.13 **Relationship to Programs Under Preparation or Execution.** The program will benefit from actions implemented and knowledge generated from (i) several operations related to Blue Economy ([5769/OC-BL](#); [ATN/JF-19232-BL](#)); and

---

<sup>27</sup> Document GN-2819-14

<sup>28</sup> A minimum of 8 people, equivalent to the number of staff planned to be recruited by the CEU to implement the Program.

[ATN/CO-19166-BL](#)), especially in mangroves conservation and sargassum reuse; (ii) Sustainable Tourism Program II ([3566/OC-BL](#)), particularly with actions to promote disaster and climate resilience, and environmental sustainability in tourism destinations in Corozal and San Pedro; (iii) Water Disinfection Program for Belize ([5754/OC-BL](#) and [5755/GR-BL](#)), regarding network expansion, energy efficiency, intelligent metering piloting, and information campaigns; and (iv) products from [ATN/AC-19488-BL](#) and [ATN/OC-19487-BL](#) “Support for Ambergris Caye Sustainable Development”.<sup>29</sup> Pre-investment studies funded by this TC will take into account activities developed by these Programs. On the other hand, these Programs will benefit from designs funded by this TC, such as (i) mangroves restoration and conservation in Corozal, (ii) the development of new tourism areas, such as the New River in OW, and (iii) essential services network extension in Orange Walk.

#### **IV. Description of activities/components and budget**

- 4.1 **Component 1. Development of Pre-investment Studies (US\$380,000).** The objective is to support the elaboration of pre-investment studies for prioritized infrastructure projects.<sup>30</sup> These projects should comply with the eligibility criteria for project selection of the Program: (i) is situated in vulnerable or prioritized areas; (ii) addresses the integration of migrants; (iii) improvement or construction of public spaces and municipal facilities; or (iv) improves the provision of urban services, such as potable water, adequate sewage disposal, drainage, public lighting, pavement, sidewalks, and bike lanes. Under environmental and social guidelines, selected projects can't be classified as category A. They should mainstream (i) gender and people with disabilities considerations and (ii) climate change perspective to define specific mitigation and adaptation measures to incorporate in the loan investments. This component will hire consulting services from individuals and firms to develop the mentioned products.
- 4.2 **Component 2: Support to the CEU (US\$70,000).** This component will hire individual consultancy services to support the CEU in implementing the activities planned in component I of the Program and in this technical cooperation, specifically in reviewing pre-investment studies deliverables and facilitating coordinating activities and workshops involving key stakeholders. Government personnel participation in capacity building activities is eligible under this component.
- 4.3 **Expected Results.** The institutional capacities of the Government, mainly the Central Executing Unit, will be strengthened through consulting services,

---

<sup>29</sup> As the Strategic Plan for the Sustainable Development of North Ambergris Caye, the zoning plan with climate change considerations, and the Feasibility study for an integral intervention in San Mateo Neighborhood.

<sup>30</sup> The consultancies to be hired are: (i) To develop the integral urban development plan (executive design and bidding documents) for the Marcos Canul Neighborhood in Orange Walk town (firm); to review and update the pre-feasibility study, for bidding process, of (ii) the Heritage Plaza, Mother's park and St. Paul BoardWalk project in Corozal (individual); (iii) the public Market and Sports Complex projects in Orange Walk (individual); and (iv) the public spaces and shared streets projects in Orange Walk, this consultancy includes the supervision of the individual consultancies for projects in Corozal and Orange Walk.

capacity building activities, and the development of pre-investment studies to facilitate the readiness of the projects to be financed under the Program.

- 4.4 The total budget for this operation is US\$450,000, financed using resources from the OC SDP Window 2—Sustainability, W2A. There is no local contribution in cash or kind.

**Table 3. Indicative Budget (US dollars)**

<b>Activity/ Component</b>	<b>Description</b>	<b>IDB/Fund Funding US\$</b>	<b>Total Funding US\$</b>
Component 1	Consulting services from individuals and firms to support the elaboration of pre-investment studies	380,000	380,000
Component 2	Individual consultancy services and workshops development to support the CEU.	70,000	70,000
<b>TOTAL</b>			<b>450,000</b>

**V. Executing agency and execution structure**

- 5.1 The Bank will be the Executing Agency at the beneficiary's request and in accordance with Appendix 10 of the Operational Guidelines for Technical Cooperation Products (GN-2629-1).
- 5.2 Given its expertise in the technical aspects to be addressed, the previous technical activities developed for the implementation of BL-T1150 and the preparation of BL-L1046 & BL-J0007, and the knowledge of the requirements of pre-investment studies to be funded by the IDB, the Housing and Urban Development Division (CSD/HUD) will be in charge of the implementation of the technical cooperation. TC activities will be coordinated with the CEU and the stakeholders designated by the beneficiary. CSD/HUD will act as the Unit of Disbursement Responsibility (UDR) and oversee the procurement processes. The Bank will own the intellectual property (IP) rights over the products financed by this TC.
- 5.3 All procurement to be executed under this Technical Cooperation have been included in the Procurement Plan (Annex IV) and will be hired in compliance with the applicable Bank policies and regulations as follows: (a) Hiring of individual consultants, as established in the regulation on Complementary Workforce (AM-650) and (b) Contracting of services provided by consulting firms in accordance with the Corporate procurement Policy (GN-2303-33) and its Guidelines.

**VI. Major Issues**

- 6.1 One main risk identified is the institutional weakness or lack of commitment from key stakeholders (such as ministries and utilities) to participate in developing the pre-investment studies and be empowered for future implementation. The coordination component aimed to encourage the participation of technical personnel, civil servants, and relevant interest groups to mitigate the identified

risk. The Bank's close engagement with high-level government officials will also be required to reduce this risk.

**VII. Exceptions to Bank policy**

7.1 No exceptions to Bank policy have been identified.

**VIII. Environmental and Social Strategy**

8.1 This Technical Cooperation is intended to finance pre-feasibility or feasibility studies of specific investment projects and the environmental and social studies associated with them; therefore, the terms of reference and products of this TC will be consistent with the applicable requirements of the Bank's Environmental and Social Policy Framework (ESPF).

**Required Annexes:**

[Request from the Client\\_223.pdf](#)

[Results Matrix\\_28723.pdf](#)

[Terms of Reference\\_61039.pdf](#)

[Procurement Plan\\_20508.pdf](#)