

Draft Initial Environmental Examination

September 2013

IND: North Karnataka Urban Sector Investment
Program Tranche 4 – Raichur Lake Development
(Non-municipal Infrastructure)

Prepared by Karnataka Urban Infrastructure Development and Finance Corporation,
Government of Karnataka for the Asian Development Bank

CURRENCY EQUIVALENTS
(as of 01 September 2013)

Currency unit	–	Rupee (INR)
INR1.00	=	\$.015
\$1.00	=	INR 66.314

Abbreviations

ADB	-	Asian Development Bank
CC	-	cement concrete
CFE	-	consent for establishment
CFO	-	consent for operation
CMC	-	city municipal council
CPCB	-	Central Pollution Control Board
CSS	-	consultant supervision specialist
DSC	-	design and supervision consultants
EA	-	executing agency
EIA	-	environmental impact assessment
EMP	-	environmental management plan
ES	-	environment specialist
GRC	-	grievance redress committee
GRM	-	grievance redress mechanism
HDPE	-	high density polyethylene
IA	-	implementing agency
IEE	-	initial environmental examination
km	-	kilometers
KSPCB	-	Karnataka State Pollution Control Board
KUIDFC	-	Karnataka Urban Infrastructure Development and Finance Corporation
lpcd	-	liter per capita per day
m	-	meters
MFF	-	multi-tranche financing facility
MLD	-	million liters per day
mm	-	millimeters
MoEF	-	Ministry of Environment and Forest
NGO	-	non-government organization
NKUSIP	-	North Karnataka Urban Sector Improvement Program
PIU	-	project implementation unit
PMU	-	project management unit
PVC	-	polyvinyl chloride
RCC	-	reinforced cement concrete
ROW	-	right of way
SEIAA	-	State Environmental Impact Assessment Authority
SPS	-	Safeguard Policy Statement
STP	-	sewage treatment plant
ULB	-	urban local body
WTP	-	water treatment plant

NOTES

In this report, "\$" refers to US dollars.
and —INRll refers to Indian rupees

This initial environmental examination is a document of the borrower. The views expressed herein do not necessarily represent those of ADB's Board of Directors, Management, or staff, and may be preliminary in nature.

In preparing any country program or strategy, financing any project, or by making any designation of or reference to a particular territory or geographic area in this document, the Asian Development Bank does not intend to make any judgments as to the legal or other status of any territory or area.

TABLE OF CONTENTS

I.	INTRODUCTION	1
A.	Background	1
B.	Background of IEE	1
C.	Environmental Regulatory Compliance	1
D.	Scope of IEE	4
E.	Report Structure	4
II.	DESCRIPTION OF THE PROJECT COMPONENTS	5
A.	Present Situation	5
B.	Proposed Lake Improvement	5
C.	Investment Program Implementation Schedule	5
III.	DESCRIPTION OF THE ENVIRONMENT	5
A.	Physical Characteristics	5
B.	Ecological Resources	6
C.	Socio Economic Characteristics	6
D.	Historic and Cultural Places	7
IV.	SCREENING OF POTENTIAL ENVIRONMENTAL IMPACTS AND MITIGATION MEASURES	7
A.	Introduction	7
B.	Pre-Construction Impacts	8
C.	Construction Impacts	9
D.	Operation and Maintenance Impacts	15
V.	PUBLIC CONSULTATION AND INFORMATION DISCLOSURE	15
A.	Overview	15
B.	Future Consultation and Disclosure	15
C.	Project Disclosure	16
D.	Redress of Grievances	16
E.	Community Participation	17
F.	Information Disclosure and Communication	18
VI.	ENVIRONMENTAL MANAGEMENT PLAN	18
A.	Institutional Requirements	36
B.	Training Needs	40
C.	Monitoring and Reporting	42
D.	EMP Implementation Cost	42
VII.	FINDINGS AND RECOMMENDATIONS	43

List of Tables

Table 1: Applicable Environmental Regulations	1
Table 2: Target Outputs and Outcomes for Tranche 4 Subproject (Raichur)	5
Table 3: Environmental Management Plan of Anticipated Impacts during Pre Construction	19
Table 4: Environmental Management Plan of Anticipated Impacts during Construction	22
Table 5: Environmental Management Plan of Anticipated Impacts during Operation	34
Table 6: Institutional Roles and Responsibilities	37
Table 7: Outline Capacity Building Program on EMP Implementation	40
Table 8: Cost Estimates to Implement the EMP	42

List of Figures

Figure 1: Grievance Redressal Process	17
Figure 2: Environmental Safeguards Implementation Arrangement	36

List of Appendix

1. National Ambient Air Quality Standards by CPCB	45
2. National Ambient Air Quality Standards in respect of Noise	46
3. Salient Features of Major Labor Laws including Amendments Issued from Time to Time Applicable to Establishments Engaged in Construction of Civil Works	47
4. Outline Flow Charts For Desilted Materials Disposal And Reuse	49
5. Sample Outline Spoil Management Plan	51
6. Sample Outline Traffic Management Plan	52
7. Sample Monthly Reporting Format for Construction Supervision Specialist	62

EXECUTIVE SUMMARY

1. The North Karnataka Urban Sector Investment Program (NKUSIP) aims to improve the level, quality and sustainability of basic urban services in selected urban local bodies (ULBs), contributing to improved quality of life among the urban poor. NKUSIP will be implemented over a period of eight year beginning in 2008, and will be funded by a loan via the Multi-tranche Financing Facility (MFF) of the Asian Development Bank (ADB).

2. Raichur lake improvement (non-municipal infrastructure) project is one of the projects proposed in Tranche-4. The lake is currently silted and polluted due to wastewater and wastes from 2 major drains and tertiary drains leading to it. ADB requires the consideration of environmental issues in all aspects of the Bank's operations, and the requirements for Environmental Assessment are described in ADB's SPS (2009). This Initial Environmental Examination (IEE) addresses components proposed under Tranche 1 which includes water supply components.

3. **Categorization.** Raichur lake improvement project is classified as Environmental Category B as per the SPS as no significant impacts are envisioned. Accordingly this Initial Environmental Examination (IEE) has been prepared and assesses the environmental impacts and provides mitigation and monitoring measures to ensure no significant impacts as a result of the project.

4. **Project Scope.** The specific outputs under this component are desilting and rehabilitation of 1.6 km of intercepting drains. There are no new drain alignments proposed under this scheme.

5. **Implementation Arrangements.** Karnataka Urban Infrastructure Development & Finance Corporation (KUIDFC) is the Executing Agency (EA) responsible for overall technical supervision and execution of all projects funded under the investment program. Implementation activities will be overseen by a separate Program Management Unit (PMU). The investment program is divided into four packages, for ease of operation and monitoring. The PMU is headed by an executive program director based in Dharwad and have four deputy program directors, one for each package. A team of senior technical, administrative and financial officials, including a state-level environmental specialist and a regional-level environmental specialist, will assist the PMU in managing and monitoring program implementation activities. Consultant teams are responsible for project planning and management and assuring technical quality of design and construction; and designing the infrastructure and supervising construction; and safeguards preparation.

6. **Description of the Environment.** Project components are located in Raichur urban area or in its immediate surroundings which were converted into urban use for many years ago, and there is no natural habitat left at these sites. The project sites are located in existing right of ways (RoWs) and government-owned land. There are no protected areas, wetlands, mangroves, or estuaries in or near the project location. There are no forest areas within or near Raichur. Soils are deep, and do not require cutting of rocks for pipe laying.

7. **Environmental Management.** An environmental management plan (EMP) is included as part of this IEE, which includes (i) mitigation measures for environmental impacts during implementation; (ii) an environmental monitoring program, and the responsible entities for mitigating, monitoring, and reporting; (iii) public consultation and information disclosure; and (iv) a grievance redress mechanism. A number of impacts and their significance have already been

reduced by amending the designs. The EMP will be included in civil work bidding and contract documents.

8. Locations and siting of the proposed infrastructures were considered to further reduce impacts. These include (i) locating facilities on government-owned land to avoid the need for land acquisition and relocation of people; and (ii) disposal of desilted materials through pre-approved disposal sites or land application.

9. Potential impacts were identified in relation to location, design, construction and operation of the improved infrastructure. During the construction phase, impacts mainly arise from the need to dispose of moderate quantities of waste soil and disturbance of residents, businesses, and traffic. Mitigation measures have been developed in generic way to reduce all negative impacts to acceptable levels.

10. During the construction phase, impacts mainly arise from the need to dispose of moderate quantities of waste soil; and from the disturbance of residents, businesses, and traffic. These are common impacts of construction in urban areas, and there are well developed methods for their mitigation. These are common temporary impacts of construction in urban areas, and there are well developed methods for their mitigation. Measures such as conducting work in lean season and minimizing inconvenience by best construction methods will be employed. Traffic management will be necessary during pipe-laying on busy roads. In the operational phase, all facilities and infrastructure will operate with routine maintenance, which should not affect the environment. Facilities will need to be repaired from time to time, but environmental impacts will be much less than those of the construction period as the work will be infrequent, affecting small areas only.

11. Mitigation measures have been developed to reduce all negative impacts to acceptable levels. Mitigation will be assured by a program of environmental monitoring to be conducted during construction. The environmental monitoring program will ensure that all measures are implemented, and will determine whether the environment is protected as intended. It will include observations on- and off-site, document checks, and interviews with workers and beneficiaries. Any requirements for corrective action will be reported to the ADB.

12. The stakeholders were involved in developing the IEE through discussions on-site and public consultation, after which views expressed were incorporated into the IEE and in the planning and development of the project. The IEE will be made available at public locations in the city and will be disclosed to a wider audience via the ADB and KUIDFC websites. The consultation process will be continued and expanded during project implementation to ensure that stakeholders are fully engaged in the project and have the opportunity to participate in its development and implementation.

13. The citizens of the Raichur town will be the major beneficiaries of this project. Benefits of the subproject include (i) avoidance of pollution at Khandak lake; (ii) avoidance of regular choking of drains; (iii) protection of lake ecosystem; (iv) reduced risk of water-borne diseases and mosquito menace; (v) improvement in aesthetic of the lake; (vi) healthy and hygienic environment; and (vii) improvement in public health quality with better sanitation.

14. **Consultation, Disclosure and Grievance Redress.** Public consultations were done in the preparation of the project and IEE. Ongoing consultations will occur throughout the project implementation period with the assistance of the NGOs. A grievance redress mechanism is described within the IEE to ensure any public grievances are addressed quickly.

15. **Monitoring and Reporting.** The PMU and construction supervision consultants will be responsible for monitoring. The DSC will submit monthly monitoring reports to PMU, and the PMU will send semi-annual monitoring reports to ADB. ADB will post the environmental monitoring reports on its website.

16. **Conclusions and Recommendations.** Therefore the proposed project is unlikely to cause significant adverse impacts. The potential impacts that are associated with design, construction and operation can be mitigated to standard levels without difficulty through proper engineering design and the incorporation or application of recommended mitigation measures and procedures. Based on the findings of the IEE, there are no significant impacts and the classification of the project as Category “B” is confirmed. No further special study or detailed environmental impact assessment (EIA) needs to be undertaken to comply with ADB SPS (2009) or GoI EIA Notification (2006).

I. INTRODUCTION

A. Background

1. Project background and context. NKUSIP was conceived, following the recommendations of the High Power Committee on Regional Imbalances, in a bid to boost economic growth in a region that has traditionally lagged behind. Twenty five towns were selected for assistance based on the following criteria: (i) district Headquarters of newly created districts, (ii) towns having more than 50,000 population, (iii) towns with tourism importance. NKUSIP eligible subsectors include water supply, sewerage, drainage, slum improvement, non-municipal infrastructure (tourism, lake development), urban road resurfacing and junction improvements and institutional development. The impact of the MFF is improved urban infrastructure and services resulting in overall improvement of quality of life in program ULBs, related increase in economic opportunities and growth in north Karnataka, and reduced imbalances between north Karnataka and the rest of the state. To date, projects have been approved for water supply services in 15 ULBs, sewerage and drainage projects in 19 ULBs, slum improvements in 15 ULBs, fire services in 23 ULBs, and tourism in 4 ULBs. NKUSIP emphasized the importance of conducting comprehensive institutional reforms and pursuing private sector participation in service delivery.

B. Background of IEE

2. Raichur lake improvement project is one of the projects proposed in Tranche 4. Water supply is currently intermittent, unreliable and suffers with huge losses and quality issues. ADB requires the consideration of environmental issues in all aspects of the Bank's operations, and the requirements for environmental assessment are described in ADB's Safeguards Policy Statement (2009). This Initial Environmental Examination (IEE) has been prepared and assesses the environmental impacts and provides mitigation and monitoring measures to ensure no significant impacts as a result of the project.

C. Environmental Regulatory Compliance

3. Table 1 presents a summary of environmental regulations and mandatory requirements applicable to Raichur lake improvement project.

Table 1: Applicable Environmental Regulations

Law	Description	Requirement
EIA Notification	The EIA Notification of 2006 and 2009 (replacing the EIA Notification of 1994), set out the requirement for environmental assessment in India. This states that Environmental Clearance is required for certain defined activities/projects, and this must be obtained before any construction work or land preparation (except land acquisition) may commence. Projects are categorized as A or B depending on the scale of the project and the nature of its impacts. Category A projects require Environmental Clearance from the Ministry of Environment and Forest (MoEF). Category B	Project is not a listed activity in Schedule I of this notification and hence environmental clearance is not required.

Law	Description	Requirement
	projects require Environmental Clearance from the State Environmental Impact Assessment Authority (SEIAA).	
Water (Prevention and Control of Pollution) Act of 1974, Rules of 1975, and amendments	Control of water pollution is achieved through administering conditions imposed in consent issued under provision of the Water (Prevention and Control of Pollution) Act of 1974. These conditions regulate the quality and quantity of effluent, the location of discharge and the frequency of monitoring of effluents. Any component of the Project having the potential to generate sewage or trade effluent will come under the purview of this Act, its rules and amendments. Such projects have to obtain Consent For Establish (CFE) under Section 25 of the Act from Karnataka State Pollution Control Board (KSPCB) before starting implementation and Consent For Operate (CFO) before commissioning. The Water Act also requires the occupier of such projects to take measures for abating the possible pollution of receiving water bodies.	None of the components of the project require CFE and CFO under this Act.
Air (Prevention and Control of Pollution) Act of 1981, Rules of 1982 and amendments.	The projects having potential to emit air pollutants into the atmosphere have to obtain CFE under Section 21 of the Air (Prevention and Control of Pollution) Act of 1981 from KSPCB before starting implementation and CFO before commissioning the project. The occupier of the project/facility has the responsibility to adopt necessary air pollution control measures for abating air pollution.	For the project, the following will require CFE and CFO from KSPCB: (i) diesel generators; (ii) wet mix plants; and (iii) stone crushers, if installed for construction. All relevant forms, prescribed fees and procedures to obtain the CFE and CFO can be found in the KSPCB website (www.kspcb.gov.in).
Environment (Protection) Act, 1986 and CPCB Environmental Standards.	Emissions and discharges from the facilities to be created or refurbished or augmented shall comply with the notified standards notified.	Appendix 1 provides applicable standards for ambient air quality.
Noise Pollution (Regulation and Control) Rules, 2000 amended up to 2010.	Rule 3 of the Act specifies ambient air quality standards in respect of noise for different areas/zones.	Appendix 2 provides applicable noise standards.
Ancient Monuments and Archaeological Sites and Remains Rules of 1959	The Rules designate areas within a radius of 100 meters (m) and 300 m from the “protected property” as “protected area” and “controlled area” respectively. No development activity (including mining operations and construction) is permitted in the “protected area” and all development activities likely to damage the protected property are not permitted in the “controlled area” without prior permission of the Archaeological Survey of India (ASI).	There are no protected properties near project area in Raichur. However, in case of chance finds, the contractors will be required to follow a protocol as defined in the Environmental Management Plan (EMP).

Law	Description	Requirement
	Protected property includes the site, remains, and monuments protected by ASI or the State Department of Archaeology.	
Land Acquisition Act of 1894	Private land acquisition is guided by the provisions and procedures in this Act. The District Collector or any other officer designated will function as the Land Acquisition Officer on behalf of the Government. There is a provision for consent award to reduce the time for processing if the land owners are willing to agree on the price fixed by the Land Acquisition Officer.	For the project, there will be no land acquisition or temporary resettlement and hence, Resettlement Plan is not required.
Labor Laws	The contractor shall not make employment decisions based upon personal characteristics unrelated to job requirements. The contractor shall base the employment relationship upon equal opportunity and fair treatment, and shall not discriminate with respect to aspects of the employment relationship, including recruitment and hiring, compensation (including wages and benefits), working conditions and terms of employment or retirement, and discipline. The contractor shall provide equal wages and benefits to men and women for work of equal value or type.	Appendix 3 provides applicable labor laws including amendments issued from time to time applicable to establishments engaged in construction of civil works.
Biodiversity Act of 2002	The Biodiversity Act 2002 primarily addresses access to genetic resources and associated knowledge by foreign individuals, institutions or companies, to ensure equitable sharing of benefits arising out of the use of these resources and knowledge to the country and the people.	Not applicable to Raichur lake improvement project
Ramsar Convention, 1971	The Ramsar Convention is an intergovernmental treaty that provides the framework for national action and international co-operation for the conservation and wise use of wetlands and their resources. India is one of the signatories to the treaty. The Ramsar convention made it mandatory for the signatory countries to include wetland conservation in their national land use plans.	Not applicable to Raichur lake improvement project
Wildlife Protection Act, 1972	This overarching Act provides protection to wild animals, birds, plants and matters connected with habitat protection, processes to declare protected areas, regulation of wildlife trade, constitution of state and national board for wildlife, zoo authority, tiger conservation authority, penalty clauses and other important regulations.	Not applicable to Raichur lake improvement project (no wildlife sanctuary).
Forest (Conservation) Act, 1980	The Forest (Conservation) Act prevents the use of forest land for non-forest uses without the clearance from Ministry of Environment	Not applicable to Raichur lake improvement project (no forest land).

Law	Description	Requirement
	and Forests (MoEF), Govt. of India	
Karnataka Forest Act, 1963 and Karnataka Forest Rules, 1969	This Act makes the basis for declaration of Reserved Forests, constitution of village forest committees, management of reserved forests and penalties and procedures.	Not applicable to Raichur lake improvement project (no forest land).
Karnataka Preservation of Trees Act, 1976 and Karnataka Preservation of Trees Rules, 1977	This Act has put restriction on felling of trees in the State unless until permitted by the Tree Officer. Any person desiring to fell a tree shall apply in writing to the tree officer for permission in that behalf. It further defines clauses for planting adequate number of trees, planting in place of fallen/destroyed trees, preservation of trees and adoption of trees.	Not applicable to Raichur lake improvement project (no tree-cutting required).

4. The ADB guidelines, on the other hand, stipulate addressing environmental concerns, if any, of a proposed activity in the initial stages of project preparation. For this, the ADB SPS categorizes the proposed components into various categories (A, B or C) to determine the level of environmental assessment required to address the potential impacts. Level of environmental assessment required for each category is presented below.

- (i) Category A: Project components with potential for significant adverse environmental impacts. An Environmental Impact Assessment (EIA) is required to address significant impacts.
- (ii) Category B: Project components judged to have some adverse environmental impacts, but of lesser degree and/or significance than those for Category A. An initial environmental examination (IEE) is required to determine whether significant environmental impacts warranting an EIA are likely. If an EIA is not needed, the IEE is regarded as the final environmental assessment report.
- (iii) Category C: Project components unlikely to have adverse environmental impacts. No EIA or IEE is required, although environmental implications are still reviewed.

5. The environmental impacts of Raichur lake improvement project have been identified and assessed as part of the planning and design process. An environmental assessment using ADB's Rapid Environmental Assessment Checklist for Water Supply was conducted, and results of the assessment show that the project is unlikely to cause significant adverse impacts. Thus, this IEE has been prepared in accordance with ADB SPS's requirements for environment category B projects.

D. Scope of IEE

6. The IEE was based mainly on secondary sources of information and field reconnaissance surveys; no field monitoring (environmental) survey was conducted. Stakeholder consultation was an integral part of the IEE.

E. Report Structure

7. This Report contains eight (8) sections including this introductory section: (i) introduction; (ii) description of Investment Program components; (iii) description of the environment; (iv) screening of potential environmental impacts and mitigation measures; (v) public consultation

and information disclosure; (vi) Institutional requirements and EMP; (vii) finding and recommendation; and (viii) conclusions.

II. DESCRIPTION OF THE PROJECT COMPONENTS

A. Present Situation

8. Two major storm water drains (*nallahs* No. 1 and No. 2 of the town, several tertiary drains from the residential area, and wastes from adjacent slums are terminating into Khandhak lake. *Nallah* No.1 is a built up drain having width of 3 to 5 m and running for a length of approximately 1.5 km. It starts from Katkalva area of the town towards northeast of the lake and carries wastewater along with sewage and storm water during rains causing pollution to the lake. *Nallah* No. 2 is a natural drain which flows from southern side of the hillock in Raichur town and also carries wastewater with sewage, debris, and vegetable wastes. Other drains passing through residential areas in Satyanath Colony, Jyothi Colony, UIDSMT Colony, IB Colony, Ghaziabad area, and Manikaprabhu carry sewage and wastes into the lake. Two slums, Indra Nagar and Ashok Nagar are situated on the banks of the lake.

B. Proposed Lake Improvement

9. The specific outputs under this component are desilting and rehabilitation of 1.6 km of intercepting drains.

Table 2: Target Outputs and Outcomes for Tranche 4 Subproject (Raichur)

Indicator	
Length of new stormwater drains (km)	1.6
Length of rehabilitated lake stormwater drains (km)	0
Length of rehabilitated embankment (km)	0

10. Benefits of the subproject include (i) avoidance of pollution at Khandak lake; (ii) avoidance of regular choking of drains; (iii) protection of lake ecosystem; (iv) reduced risk of water-borne diseases and mosquito menace; (v) improvement in aesthetic of the lake; (vi) healthy and hygienic environment; and (vii) improvement in public health quality with better sanitation.

C. Investment Program Implementation Schedule

11. Raichur lake improvement project will be implemented over a period of 18 months.

III. DESCRIPTION OF THE ENVIRONMENT

A. Physical Characteristics

12. **Topography and soils.** The town's general topography is plain with rocky hills. The town is situated at a level of 400m MSL. The soil of the town is characterized by block cotton soil in the west of the railway line and the remaining area consists of red rocky soil.

13. **Air Quality.** The ambient air quality status of Raichur shows that all the pollutants in ambient air are well within the limits.

14. **Climatic Condition.** Raichur falls under arid region of the state of Karnataka. The climate of the town is characterized by dry weather in the major parts of the year with very hot summer. The temperature level goes as high as 43 deg C during May and the minimum temperature will be around 15 deg C during the months of December and January. The mean maximum temperature during the months of April and May is around 39 deg C.

15. The town receives southwest monsoon during the period of June to September and the period between the months of October and November can be termed as post monsoon months. The town experiences scanty rainfall and the long term annual average rainfall is 755 mm. The rainfall is confined and about 70 percent of the annual rainfall is received during the months of June to September. The relative humidity varies from 25 to 80 percent, and is generally higher during the southwest monsoon season ranging from 52 to 80 percent. The wind blows predominantly from west and southwest during monsoon period of June to September while from November to March the predominant wind direction east. The winds are light in this region. Most of the winds occur in the range of 1-5 kmph; and during the monsoon, winds are in the range of 6-11 kmph also occur.

16. **Surface Water.** Tungabhadra flows at a distance of about 20 km from the town. Two water bodies, the Manchalapur tank and Aam talab, are located in the town. Almost 80 percent of the area drains into Manchalapur Tank and the remaining into the Aam Talab. Due to low rainfall in the area, the tanks are almost dry. As the rainfall is confined to short period of the year, these streams carry wastewater for most parts of the year and eventually pollute the Manchalapur Lake and Aam Talab. At present, these lakes are polluted and filled with wastewater. Due to lack of adequate sewerage system, the wastewater enters these streams.

17. **Groundwater.** In addition to the municipal water supply in the town, sizable population also depends on groundwater resources; in the extension areas and uncovered areas the groundwater is only source of water. The depth of water table is medium and is in the range of 8 m to 14 m; however, due to low yield of top aquifer, the depth of wells are generally deep i.e. more than 50 m.

B. Ecological Resources

18. There are no forest areas in and around the town and there are no sensitive environmental features such as national parks, wetlands, and biosphere reserves in the Raichur district. No endangered/protected species of either flora or fauna are found in the town and their surroundings.

C. Socio Economic Characteristics

19. **Demography.** Raichur has witnessed a remarkable increase in the population. It has grown from 169,488 in 1991 to 205,634 in 2001, registering a decadal growth rate of 36 percent. Extending to a total area of 41.23 sq. Km inhabiting little more than 0.2 million population, the gross density of the town is 4,987 persons per sq. km. Mukthalpet,

20. Maddipet, Arab Mohall, Androon Quill, Baron Quill, Mangalwarpet, Gajgaripeth and Somwarpet are thickly populated areas of the town. Due to lack infrastructure facilities such as water supply and sewerage in the fringe areas, the people prefer to remain in the central served areas rather than move to the town periphery.

21. The sex ratio (2001) in Raichur was 945, which is slightly lower than the district urban

average of 949 and slightly more than the State urban average of 941. The town has higher and literacy rate in comparison with the district. The respective figure in 2001, for Raichur was 71.5 percent and that of district and State urban literacy was 67.6 percent and 71.4 percent.

22. **Economic Base.** Raichur is a focal point for trade and commercial activities in the region. There are eight large and medium scale industries in the taluka. The town has a sound industrial and as well agricultural based development. Cotton and rice are the main exports of the town. Raichur town has the most prestigious and profit making power generation unit, Raichur Thermal Power Station with 6 units each of 210 MW capacity which is running almost 100 percent capacity. As the power plant is located away from the town, interference with the town air quality is not observed, which is evident from the air quality data of the town.

D. Historic and Cultural Places

23. Though the Raichur region has great mythological importance and rich history, there are no protected monuments in the town. Weapons and implements made of stone are found in villages called Maski, Karadkal and Kallur. During the 3rd century, the district was ruled by Maura Dynasty. It is said that the great emperors, namely, 'Samarat Ashok', Chalukyas, Rashtrakutas and Hoys alas have also ruled the district. During the time of Independence Raichur was ruled by Nizams of Hyderabad. A fort was constructed during this period.

IV. SCREENING OF POTENTIAL ENVIRONMENTAL IMPACTS AND MITIGATION MEASURES

A. Introduction

24. Potential environmental impacts of the proposed infrastructure components are presented in this section. Mitigation measures to minimize/mitigate negative impacts, if any, are recommended along with the agency responsible for implementation. Monitoring actions to be conducted during the implementation phase is also recommended to reduce the impact.

25. Screening of potential environmental impacts are categorized into four categories considering Investment Program phases: location impacts and design impacts (pre-construction phase), construction phase impacts and operations and maintenance phase impacts.

- a. **Location impacts** include impacts associated with site selection and include loss of on-site biophysical array and encroachment either directly or indirectly on adjacent environments. It also includes impacts on people who will lose their livelihood or any other structures by the development of that site.
- b. **Design impacts** include impacts arising from Investment Program design, including technology used, scale of operation/throughput, waste production, discharge specifications, pollution sources and ancillary services.
- c. **Construction impacts** include impacts caused by site clearing, earthworks, machinery, vehicles and workers. Construction site impacts include erosion, dust, noise, traffic congestion and waste production.
- d. **O&M impacts** include impacts arising from the operation and maintenance activities of the infrastructure facility. These include routine management of operational waste streams, and occupational health and safety issues.

26. Screening of environmental impacts has been based on the impact magnitude (negligible/moderate/severe – in the order of increasing degree) and impact duration (temporary/permanent).

27. This section of the IEE reviews possible project-related impacts, in order to identify issues requiring further attention and screen out issues of no relevance. ADB SPS (2009) require that impacts and risks will be analyzed during pre-construction, construction, and operational stages in the context of the project's area of influence.

28. The ADB Rapid Environmental Assessment Checklist (General) in http://www.adb.org/documents/guidelines/environmental_assessment/eaguidelines002.asp was used to screen the project for environmental impacts and to determine the scope of the IEE investigation.

29. In the case of this project (i) most of the individual elements are relatively small and involve straight forward construction and operation, so impacts will be mainly localized and not greatly significant; (ii) most of the predicted impacts are associated with the construction process, and are produced because that process is invasive, involving excavation and earth movements; and (iii) being located in the city, will not cause direct impact on biodiversity values. The project will be in properties held by the local government and access to the project location is thru public rights-of-way and existing roads hence, land acquisition and encroachment on private property will not occur.

B. Pre-Construction Impacts

30. **Utilities.** Telephone lines, electric poles and wires, water lines within the proposed project locations may require to be shifted in few cases. To mitigate the adverse impacts due to relocation of the utilities, CSS will (i) identify the locations and operators of these utilities to prevent unnecessary disruption of services during construction phase; and (ii) instruct construction contractors to prepare a contingency plan to include actions to be done in case of unintentional interruption of services.

31. **Social and Cultural Resources.** Any work involving ground disturbance can uncover and damage archaeological and historical remains. For this project, excavation will occur in project sites, so it could be make medium risk of such impacts if the site contains any archeological and historical remains. Nevertheless, CSS/Divisional ES will:

- (i) Consult CMC to obtain an expert assessment of the archaeological potential of the site;
- (ii) Consider alternatives if the site is found to be of high risk;
- (iii) Include state and local archaeological, cultural and historical authorities, and interest groups in consultation forums as project stakeholders so that their expertise can be made available; and
- (iv) Develop a protocol for use by the construction contractors in conducting any excavation work, to ensure that any chance finds are recognised and measures are taken to ensure they are protected and conserved.

32. **Site selection of construction work camps, stockpile areas, storage areas, and disposal areas.** Priority is to locate these near the project location. However, if it is deemed necessary to locate elsewhere, sites to be considered will not promote instability and result in destruction of property, vegetation, irrigation, and drinking water supply systems. Residential

areas will not be considered for setting up camps to protect the human environment (i.e., to curb accident risks, health risks due to air and water pollution and dust, and noise, and to prevent social conflicts, shortages of amenities, and crime). Extreme care will be taken to avoid disposals near water bodies, swamps, or in areas which will inconvenience the community.

33. **Site selection of sources of materials.** Extraction of materials can disrupt natural land contours and vegetation resulting in accelerated erosion, disturbance in natural drainage patterns, ponding and water logging, and water pollution. To mitigate the potential environmental impacts, locations of quarry site/s and borrow pit/s (for loose material other than stones) would be assessed by CSS. Priority would be sites already permitted by Mining Department. If other sites are necessary, these would be located away from population centers, drinking water intakes and streams, cultivable lands, and natural drainage systems; and in structurally stable areas even if some distance from construction activities. It will be the construction contractor's responsibility to verify the suitability of all material sources and to obtain the approval of CMC. If additional quarries will be required after construction is started, then the construction contractor shall use the mentioned criteria to select new quarry sites, with written approval of CMC.

34. **Option for disposal/re-use of desilted materials.** Dispersion of desilted material (thick layer of fine silt material) in adjoining areas will be prevented by disposal to identified disposal sites or determination by CSS and environment specialists if the materials can be reused for strengthening of banks, formation of embankments, or application in farmlands. Appendix 4 provides step-by-step process for disposal or reuse of desilted materials. If desilted materials will be reused in farmlands, working in collaborative mode and consultation with farmers are necessary to minimize potential environmental and social challenges faced by the proposed activity.

C. Construction Impacts

35. The civil works for the lake improvement include earth work excavation for the interceptor drains. Earth work excavation will be undertaken by machine and include danger lighting and using sight rails and boning rods at every 100 m, while pipe laying works will include laying pipes at required gradient, fixing collars, elbows, tees, bends and other fittings including conveying the material to work spot and testing for water tightness.

36. The minimum working hours will be 8 hours daily, the total duration of each stage depends on the soil condition and other local features. The excavation of trenches is estimated to generate excavated soils and desilted materials. The excavated soil shall be used for filling if required or stored/ dumped in approved debris disposal site. If desilted materials will be reused in farmlands, approval and written consents from farm owners (not tenants) are necessary to be obtained by PMU/PIU.

37. Although construction of these project components involves quite simple techniques of civil work, the invasive nature of excavation and the project locations in the built-up areas of the city where there are a variety of human activities, will result to impacts to the environment and sensitive receptors such as residents, businesses, and the community in general. These anticipated impacts are temporary and for short duration.

38. Physical impacts will be reduced by the method of working and scheduling of work, whereby the project components will be (i) constructed by small teams working at a time; (ii) any excavation done near sensitive area like school, religious places and house will be protected as

per standard norms etc.

39. **Sources of Materials.** Significant amount of gravel, sand, and cement will be required for this project. The construction contractor will be required to:

- (i) The material sources permitted by government;
- (ii) Verify suitability of all material sources and obtain approval of Program Management Unit (PMU); and
- (iii) Submit to CSS on a monthly basis documentation of sources of materials.

40. **Air Quality.** Emissions from construction vehicles, equipment, and machinery used for excavation and construction will induce impacts on the air quality in the construction sites. Anticipated impacts include dusts and increase in concentration of vehicle-related pollutants such as carbon monoxide, sulfur oxides, particulate matter, nitrous oxides, and hydrocarbons) but temporary and during construction activities only. To mitigate the impacts, construction contractors will be required to:

- (i) Consult with PMU/CSS on the designated areas for stockpiling of, soils, gravel, and other construction materials;
- (ii) Damp down exposed soil and any stockpiled on site by spraying with water when necessary during dry weather;
- (iii) Use tarpaulins to cover sand and other loose material when transported by trucks; and
- (iv) Fit all heavy equipment and machinery with air pollution control devices which are operating correctly.

41. **Surface Water Quality.** Mobilization of settled silt materials, run-off from stockpiled materials, and chemical contamination from fuels and lubricants during construction works can contaminate downstream surface water quality of the streams draining the City. These potential impacts are temporary and short-term duration only and to ensure these are mitigated, construction contractor will be required to:

- (i) Prepare and implement a spoils management plan (**Appendix 5**);
- (ii) Avoid stockpiling of earth fill especially during the monsoon season unless covered by tarpaulins or plastic sheets;
- (iii) Prioritize re-use of excess spoils and materials in the construction works. If spoils will be disposed, consult with PMU/CSS on designated disposal areas;
- (iv) Install temporary silt traps or sedimentation basins along the drainage leading to the water bodies;
- (v) Place storage areas for fuels and lubricants away from any drainage leading to water bodies;
- (vi) Dispose any wastes generated by construction activities in designated sites; and
- (vii) Conduct surface quality inspection according to the Environmental Management Plan (EMP).

42. **Noise Levels.** There are no health facilities, scheduled or unscheduled historical, archaeological, paleontological, or architectural sites near the construction sites. However, construction works will be on settlements, along and near schools, and areas with small-scale businesses. The sensitive receptors are the general population in these areas. Increase in noise level may be caused by excavation equipment, and the transportation of equipment, materials, and people. Impact is negative, short-term, and reversible by mitigation measures. The

construction contractor will be required to:

- (i) Plan activities in consultation with PMU/CSS so that activities with the greatest potential to generate noise are conducted during periods of the day which will result in least disturbance;
- (ii) Horns should not be used unless it is necessary to warn other road users or animals of the vehicle's approach;
- (iii) Minimize noise from construction equipment by using vehicle silencers, fitting jackhammers with noise-reducing mufflers, and portable street barriers the sound impact to surrounding sensitive receptor; and
- (iv) Maintain maximum sound levels not exceeding 80 decibels (dBA) when measured at a distance of 10 m or more from the vehicle/s.

43. **Landscape and Aesthetics.** The construction works does not envisage any cutting of trees, but it will produce excess excavated earth, excess construction materials, and solid waste such as removed concrete, wood, packaging materials, empty containers, spoils, oils, lubricants, and other similar items. These impacts are negative but short-term and reversible by mitigation measures. The construction contractor will be required to:

- (i) Obtain specific instructions on disposal/reuse of desilted materials;
- (ii) Prepare and implement spoils management plan;
- (iii) Avoid stockpiling of excess excavated soils;
- (iv) Coordinate with ULB/CMC for beneficial uses of excess excavated soils or immediately dispose to designated areas;
- (v) Recover used oil and lubricants and reuse or remove from the sites;
- (vi) Manage solid waste according to the following preference hierarchy: reuse, recycling and disposal to designated areas;
- (vii) Remove all wreckage, rubbish, or temporary structures which are no longer required; and
- (viii) Request PMU/CSS to report in writing that the necessary environmental restoration work has been adequately performed before acceptance of work.

44. **Surface and Groundwater Quality.** Another physical impact that is often associated with excavation is the effect on drainage and the local water table if groundwater and surface water collect in the voids. To ensure that water will not pond in pits and voids near project location, the construction contractor will be required to conduct excavation works on non-monsoon season to the maximum extent possible.

45. **Accessibility.** Hauling of construction materials and operation of equipment on-site can cause traffic problems. Potential impact is negative but short term and reversible by mitigation measures. The construction contractor will be required to:

- (i) Prepare and implement a Traffic Management Plan (Appendix 6)
- (ii) Plan transportation routes so that heavy vehicles do not use narrow local roads, except in the immediate vicinity of delivery sites;
- (iii) Schedule transport and hauling activities during non-peak hours;
- (iv) Locate entry and exit points in areas where there is low potential for traffic congestion;
- (v) Keep the site free from all unnecessary obstructions;
- (vi) Drive vehicles in a considerate manner;

- (vii) Coordinate with Traffic Police for temporary road diversions and with for provision of traffic aids if transportation activities cannot be avoided during peak hours; and
- (viii) Notify affected sensitive receptors by providing sign boards informing nature and duration of construction works and contact numbers for concerns/complaints.

46. Where ever road width is minimal, there will be temporary loss of access during the excavation works. Under those circumstances, contractor can adopt following measures:

- (i) Inform the affected local population two days in advance about the work schedule
- (ii) Plan and execute the work in such a way that the period of disturbance/ loss of access is minimum.
- (iii) Provide pedestrian access in all the locations until normalcy is restored.

47. **Socio-Economic – Income.** The project components will be located in government land and there is no requirement for land acquisition or any resettlements. Construction works will impede the access of residents to specific site in limited cases. The potential impacts are negative and moderate but short-term and temporary. The construction contractor will be required to:

- (i) Prepare and implement spoils management plan (**Appendix 6**);
- (ii) Leave spaces for access between mounds of soil;
- (iii) Provide walkways and metal sheets where required to maintain access across for people and vehicles;
- (iv) Increase workforce in front of critical areas such as institutions, place of worship, business establishment, hospitals, and schools;
- (v) Consult businesses and institutions regarding operating hours and factoring this in work schedules. Consider night works in busy commercial areas; and
- (vi) Provide sign boards for pedestrians to inform nature and duration of construction works and contact numbers for concerns/complaints.
- (vii) Notify community/ water users in advance about likely interruptions in water supply.
- (viii) Provide alternate sources of clean water until water supply is restored.

48. **Socio-Economic – Employment.** Manpower will be required during the 18-months construction stage. This can result to generation of contractual employment and increase in local revenue. Thus potential impact is positive and long-term. The construction contractor will be required to:

- (i) Employ at least 50% of the labour force, or to the maximum extent, local persons within the 2-km immediate area if manpower is available; and
- (ii) Secure construction materials from local market.

49. **Occupational Health and Safety.** Workers need to be mindful of the occupational hazards which can arise from working in polluted environment and excavation works. Potential impacts are negative and long-term but reversible by mitigation measures. The construction contractor will be required to:

- (i) Comply with all national, state and local core labor laws (See Section II of this IEE);

- (ii) Develop and implement site-specific occupational health and safety (OH&S) Plan which will include measures such as: (a) excluding public from the site; (b) ensuring all workers are provided with and use personal protective equipment; (c) OH&S Training¹ for all site personnel; (d) documented procedures to be followed for all site activities; and (e) documentation of work-related accidents;
- (iii) Ensure that qualified first-aid can be provided at all times. Equipped first-aid stations shall be easily accessible throughout the site;
- (iv) Provide medical insurance coverage for workers;
- (v) Secure all installations from unauthorized intrusion and accident risks;
- (vi) Provide supplies of potable drinking water;
- (vii) Provide clean eating areas where workers are not exposed to hazardous or noxious substances;
- (viii) Provide H&S orientation training to all new workers to ensure that they are apprised of the basic site rules of work at the site, personal protective protection, and preventing injuring to fellow workers;
- (ix) Provide visitor orientation if visitors to the site can gain access to areas where hazardous conditions or substances may be present. Ensure also that visitor/s do not enter hazard areas unescorted;
- (x) Ensure the visibility of workers through their use of high visibility vests when working in or walking through heavy equipment operating areas;
- (xi) Ensure moving equipment is outfitted with audible back-up alarms;
- (xii) Mark and provide sign boards for hazardous areas such as energized electrical devices and lines, service rooms housing high voltage equipment, and areas for storage and disposal. Signage shall be in accordance with international standards and be well known to, and easily understood by workers, visitors, and the general public as appropriate; and
- (xiii) Disallow worker exposure to noise level greater than 85 dBA for a duration of more than 8 hours per day without hearing protection. The use of hearing protection shall be enforced actively.

50. **Community Health and Safety.** Hazards posed to the public, specifically in high-pedestrian areas may include traffic accidents and vehicle collision with pedestrians. In most of the cases location of project sites at isolated area, hence health and safety risk to community is minimum. Potential impact is negative but short-term and reversible by mitigation measures. The construction contractor will be required to:

- (i) Plan routes to avoid times of peak-pedestrian activities.
- (ii) Liaise with PMU/CSS in identifying risk areas on route cards/maps.
- (iii) Maintain regularly the vehicles and use of manufacturer-approved parts to minimize potentially serious accidents caused by equipment malfunction or premature failure.
- (iv) Provide road signs and flag persons to warn of on-going trenching activities.

¹ Some of the key areas that may be covered during training as they relate to the primary causes of accidents include (i) slips, trips and falls; (ii) personal protective equipment; (iii) ergonomics, repetitive motion, and manual handling; (iv) workplace transport; and (v) legislation and responsibilities. Training can provide the foundations of competence but it does not necessarily result in a competent worker. Therefore, it is essential to assess staff competence to ensure that the training provided is relevant and effective. Supervision and monitoring arrangements shall be in place to ensure that training has been effective and the worker is competent at their job. The level of supervision and monitoring required is a management decision that shall be based on the risks associated with the job, the level of competence required, the experience of the individual and whether the worker works as part of a team or is a lone worker.

51. **Work Camps.** Operation of work camps can cause temporary air and noise pollution from machine operation, water pollution from storage and use of fuels, oils, solvents, and lubricants. Potential impacts are negative but short-term and reversible by mitigation measures. The construction contractor will be required to:

- (i) Consult with PMU/CSS before locating project offices, sheds, and construction plants;
- (ii) Minimize removal of vegetation and disallow cutting of trees;
- (iii) Provide drinking water, water for other uses, and sanitation facilities for employees;
- (iv) Ensure conditions of liveability at work camps are maintained at the highest standards possible at all times;
- (v) Prohibit employees from poaching wildlife and cutting of trees for firewood;
- (vi) Train employees in the storage and handling of materials which can potentially cause soil contamination;
- (vii) Recover used oil and lubricants and reuse or remove from the site;
- (viii) Manage solid waste according to the following preference hierarchy: reuse, recycling and disposal to designated areas;
- (ix) Remove all wreckage, rubbish, or temporary structures which are no longer required; and
- (x) Request PMU/CSS to report in writing that the camp has been vacated and restored to pre-project conditions before acceptance of work.

52. **Social and Cultural Resources.** For this project, excavation will occur at locations known not to have archaeological values, so it could be that there is a low risk of such impacts. Nevertheless, the construction contractor will be required to:

- (i) Strictly follow the protocol for chance finds in any excavation work;
- (ii) Request PMU/CSS or any authorized person with archaeological/historical field training to observe excavation;
- (iii) Stop work immediately to allow further investigation if any finds are suspected; and
- (iv) Inform PMU/CSS if a find is suspected, and take any action they require ensuring its removal or protection in situ.
- (v) Adjacent to historic sites, undertake excavation and construction work in such a way that no structural damage is caused to the building.

53. **Debris/desilted materials disposal.** Prior to the commencement of works, contractor shall identify a debris disposal site in consultation with the ULB/CMC and adhering to following criteria:

- (i) Obtain specific instructions on disposal/reuse of desilted materials;
- (ii) The said site shall be selected preferably from barren, infertile lands. In case agricultural land needs to be selected, top-soil stripping, stacking and preservation should be undertaken prior to initiation of any activities.
- (iii) Debris disposal site shall be at least 200 m away from surface water bodies².

² In the absence of site meeting the stipulated criteria, an alternate site can be selected specifying the reasons. In such a case, the construction camp management plan should incorporate additional measures specific to the site as suggested by the CSC.

- (iv) No residential areas shall be located within 100 m downwind side of the site.
- (vi) The site is minimum 250 m. away from sensitive locations like settlements, ponds/lakes or other water bodies.
- (vii) The local governing body and community shall be consulted while selecting the site.

D. Operation and Maintenance Impacts

54. Operation and maintenance of the lake will be carried out by the CMC. The system have a design life of 30 years, during which shall not require major repairs or refurbishments and should operate with little maintenance beyond routine actions required to keep the interceptor drains in working order. The stability and integrity of the system will be monitored periodically to detect any problems and allow remedial action if required. Any repairs will be small-scale involving manual, temporary, and short-term works.

55. Improper disposal of silt and debris removed from interceptor drains could cause Inconvenience to public. Silt and debris shall be collected in trucks and transported to the Municipal Solid Waste Disposal Site and shall be used as covering material for the waste being landfilled.

V. PUBLIC CONSULTATION AND INFORMATION DISCLOSURE

A. Overview

56. A two tier consultation process was adopted for NKUSIP for information disclosure and making all the concerned people involved in the project. Institutional consultations were conducted with the Governmental Departments such as Planning Department, Urban Development Board, Public Works Department, Pollution Control Board, Karnataka Urban Water Supply and Drainage Board, Raichur CMC, etc. After consultations with Raichur CMC, the Commissioner has certified that the proposals for Raichur suit the requirements of the ULB.

57. Public consultation involved focus group discussions. The people residing along the project activity areas were consulted during topographical surveys and site visits in Nov 2012 and due discussions with the participants were made regarding the proposals. It was observed that people are willing to extend their cooperation as the proposed activities are supposed to enhance the living standard of the public. The public expressed their concern regarding disturbance and noise during construction work. Public demanded for advance notice before construction and proper warning signs along the construction area to avoid accidents and inconvenience. People expressed (i) executive agency should give preference to engage internationally reputed contractor as people do not faith about the local contractors in respect of quality of works as well as timely completion of work; (ii) local people should be employed by the contractor during construction work; and (iii) adequate safety measures should be taken during construction work. Views expressed were incorporated into the IEE and in the planning and development of the subproject.

B. Future Consultation and Disclosure

58. The public consultation and disclosure program will remain a continuous process throughout the project implementation and shall include the following:

1. Consultation during detailed design

59. Focus-group discussions with affected persons and other stakeholders to hear their views and concerns, so that these can be addressed in project design wherever necessary. Regular updates on the environmental component of the project will kept available at the PMU and DSC offices.

60. Implementing agency will conduct information dissemination sessions at major intersections and solicit the help of the local community leaders/prominent citizens to encourage the participation of the people to discuss various environmental issues.

61. The PMU, with assistance of DSC will conduct information dissemination sessions in the project area. During EMP implementation PMU and DSC will organize public meetings and will appraise the communities about the progress on the implementation of EMP in the project works.

2. Consultation during construction

62. Public meetings with affected communities (if any) to discuss and plan work programs and allow issues to be raised and addressed once construction has started.

63. Smaller-scale meetings to discuss and plan construction work with local communities to reduce disturbance and other impacts, and provide a mechanism through which stakeholders can participate in project monitoring and evaluation.

C. Project Disclosure

64. A communications strategy is of vital importance in terms of accommodating traffic during road closure. Local communities will be continuously consulted regarding location of construction camps, access and hauling routes and other likely disturbances during construction. The road closure together with the proposed detours will be communicated via advertising, pamphlets, radio broadcasts, road signages, etc.

65. Public information campaigns via newspaper/radio/TV, to explain the project details to a wider population. Public disclosure meetings at key project stages to inform the public of progress and future plans.

66. For the benefit of the community the IEE will be translated in the local language and made available at the offices of KUIDFC, PMU and DSC. Hard copies of the IEE will be accessible to citizens as a means to disclose the document and at the same time creating wider public awareness. Electronic version of the IEE will be placed in the official website of the CMC/PMU/ State Government and the official website of ADB after approval of the IEE by Government and ADB. The PMU will issue Notification on the start date of implementation in local newspapers

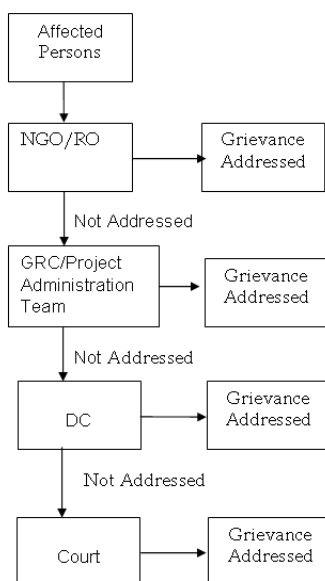
D. Redress of Grievances

67. Grievances will first be brought to the attention of the implementing NGO. Grievances not redressed by the NGO will be brought to the Grievance Redress Committee (GRC) established in each Investment Program district. The GRC process is designed to be transparent, gender responsive, culturally appropriate and commensurate to the risks and adverse impacts of the project, as well as readily accessible to all segments of the affected

people. Affected people are to be appropriately informed about the mechanism through media and public outlets. And to ensure that all views incorporated in implementation process.

68. Only major grievances shall be placed before the GRC. The GRC will determine the merit of each grievance and attempt to resolve the same within a month from the date of lodging of complaints, failing which the grievance shall be addressed to the Deputy Commissioner. The GRC shall forward grievances of serious nature immediately on receipt of complaint to the Deputy Commissioner. The DC will hear appeals against the decisions of GRC. The decision of DC is final and cannot be contested in any other forum except in the Courts of Law.

Figure 1: Grievance Redressal Process



E. Community Participation

69. The sub project requires an integrated approach for operation and maintenance in all aspects. The active participation of local community, conservation organizations, NGOs, and citizens groups with active support from the media at all levels of the project planning, executing and monitoring is required for implementation of measures. Several organizations, both Government, Non- Government and at Community levels, can be participants in the project implementation.

70. To implement the EMP of this project in a proper way, it is essential to provide scope of involving communities and affected persons in the process. Stakeholders' participation throughout the stages of project implementation and operation will be integrated in the project.

71. The post development monitoring will also become meaningful only through public participation. Monitoring with the help of public can identify changes in the project sites.

72. It has been fully realized that, to redress the environmental issues likely to surface during construction and operational phases, a constant communication need to be established with the affected communities. This has been ensured by regular monitoring. Meetings will be

organized with the project affected and the various stakeholders at regular intervals at the potential hotspot/sensitive locations before and during the construction period.

F. Information Disclosure and Communication

73. A summary of the IEE Report in English and Kannada will be published in the website of Municipality and NKUSIP. A board showing the details of the project will be displayed at the construction site for the information of general public.

VI. ENVIRONMENTAL MANAGEMENT PLAN

74. The purpose of the environmental management plan (EMP) is to ensure that the activities are undertaken in a responsible, non-detrimental manner with the objectives of: (i) providing a proactive, feasible, and practical working tool to enable the measurement and monitoring of environmental performance on-site; (ii) guiding and controlling the implementation of findings and recommendations of the environmental assessment conducted for the project; (iii) detailing specific actions deemed necessary to assist in mitigating the environmental impact of the project; and (iv) ensuring that safety recommendations are complied with.

75. A copy of the EMP must be kept on work sites at all times. This EMP will be included in the bid documents and will be further reviewed and updated during implementation. The EMP will be made binding on all contractors operating on the site and will be included in the contractual clauses. Non-compliance with, or any deviation from, the conditions set out in this document constitutes a failure in compliance.

76. For civil works, the contractor will be required to (i) establish an operational system for managing environmental impacts (ii) carry out all of the monitoring and mitigation measures set forth in the EMP; and (iii) implement any corrective or preventative actions set out in safeguards monitoring reports that the employer will prepare from time to time to monitor implementation of this IEE and EMP. The contractor shall allocate a budget for compliance with these EMP measures, requirements and actions.

Table 3: Environmental Management Plan of Anticipated Impacts during Pre-Construction

Field	Anticipated Impact	Mitigation Measures	Responsible for Implementation	Monitoring of Mitigation	Cost and Source of Funds
Utilities	Telephone lines, electric poles and wires, water lines within proposed project area	(i) Identify and include locations and operators of these utilities in the detailed design documents to prevent unnecessary disruption of services during construction phase; and (ii) Require construction contractors to prepare a contingency plan to include actions to be done in case of unintentional interruption of services. (iii) Require contractors to prepare spoils management plan (Appendix 5) and traffic management plan (Appendix 6)	CSS	(i) List of affected utilities and operators; (ii) Bid document to include requirement for a contingency plan for service interruptions (example provision of water if disruption is more than 24 hours), spoil management plan (Appendix 5), and traffic management plan (Appendix 6)	No cost required. Mitigation measures are part of TOR of PMU, design engineers, and supervising consultants.
Social and Cultural Resources	Ground disturbance can uncover and damage archaeological and historical remains	(i) Consult Archaeological Survey of India (ASI) or concerned dept. of Karnataka Govt. to obtain an expert assessment of the archaeological potential of the site; (ii) Consider alternatives if the site is found to be of	PMU & CSS	Chance Finds Protocol	No cost required. Mitigation measures are part of TOR of PMU, design engineers, and supervising consultants.

Field	Anticipated Impact	Mitigation Measures	Responsible for Implementation	Monitoring of Mitigation	Cost and Source of Funds
		medium or high risk; (iii) Develop a protocol for use by the construction contractors in conducting any excavation work, to ensure that any chance finds are recognised and measures are taken to ensure they are protected and conserved.			
Construction work camps, hot mix plants, stockpile areas, storage areas, and disposal areas.	Disruption to traffic flow and sensitive receptors	(i) Prioritize areas within or nearest possible vacant space in the project location; (ii) If it is deemed necessary to locate elsewhere, consider sites that will not promote instability and result in destruction of property, vegetation, irrigation, and drinking water supply systems; (iii) Do not consider residential areas; (iv) Take extreme care in selecting sites to avoid direct disposal to water body which will inconvenience the community. (v) For excess spoil disposal, ensure (a) site shall be selected	PMU and CSS to determine locations prior to award of construction contracts.	(i) List of selected sites for construction work camps, hot mix plants, stockpile areas, storage areas, and disposal areas. (ii) Written consent of landowner/s (not lessee/s) for reuse of excess spoils to agricultural land	No cost required. Mitigation measures are part of TOR of PMU, design engineers, and supervising consultants.

Field	Anticipated Impact	Mitigation Measures	Responsible for Implementation	Monitoring of Mitigation	Cost and Source of Funds
		preferably from barren, infertile lands. In case agricultural land needs to be selected, written consent from landowners (not lessees) will be obtained; (b) debris disposal site shall be at least 200 m away from surface water bodies; (c) no residential areas shall be located within 50 m downwind side of the site; and (d) site is minimum 250 m away from sensitive locations like settlements, ponds/lakes or other water bodies.			
Sources of Materials	Extraction of materials can disrupt natural land contours and vegetation resulting in accelerated erosion, disturbance in natural drainage patterns, ponding and water logging, and water pollution.	(i) Prioritize sites already permitted by the Mining Department; (ii) If other sites are necessary, inform construction contractor that it is their responsibility to verify the suitability of all material sources and to obtain the approval of PMU and (iii) If additional quarries will be	PMU and CSS to prepare list of approved quarry sites and sources of materials	(i) List of approved quarry sites and sources of materials; (ii) Bid document to include requirement for verification of suitability of sources and permit for additional quarry sites if necessary.	No cost required. Mitigation measures are part of TOR of PMU, design engineers, and supervising consultants.

Field	Anticipated Impact	Mitigation Measures	Responsible for Implementation	Monitoring of Mitigation	Cost and Source of Funds
		required after construction is started, inform construction contractor to obtain a written approval from PMU.			
Consents, permits, clearances, NOCs, etc.	Failure to obtain necessary consents, permits, NOCs, etc can result to design revisions and/or stoppage of works	(i) Obtain all necessary consents, permits, clearance, NOCs, etc. prior to start of civil works. (ii) Acknowledge in writing and provide report on compliance all obtained consents, permits, clearance, NOCs, etc. (iii) Include in detailed design drawings and documents all conditions and provisions if necessary	PMU and CSS	Incorporated in final design and communicated to contractors.	No cost required. Cost of obtaining all consents, permits, clearance, NOCs, etc. prior to start of civil works responsibility of PMU. Mitigation measures are part of TOR of PMU, design engineers, and supervising consultants.

Table 4: Environmental Management Plan of Anticipated Impacts during Construction

Field	Anticipated Impact	Mitigation Measures	Responsible for Mitigation	Monitoring of Mitigation	Cost and Source of Funds
EMP Implementation Training	Irreversible impact to the environment, workers, and community	(i) Project manager and all key workers will be required to undergo EMP implementation including spoils management, Standard operating procedures (SOP) for construction works; occupational health and safety (OH&S), core labor	Construction Contractor	(i) Certificate of Completion (Safeguards Compliance Orientation) (ii) Posting of Certification of Completion at worksites (iii) Posting of EMP at	Cost of EMP Implementation Orientation Training to contractor is responsibility of PMU. Other costs responsibility of contractor.

Field	Anticipated Impact	Mitigation Measures	Responsible for Mitigation	Monitoring of Mitigation	Cost and Source of Funds
		laws, applicable environmental laws, etc		worksites	
Air Quality	Emissions from construction vehicles, equipment, and machinery used for installation of pipelines resulting to dusts and increase in concentration of vehicle-related pollutants such as carbon monoxide, sulfur oxides, particulate matter, nitrous oxides, and hydrocarbons.	(i) Consult with PMU/CSS on the designated areas for stockpiling of clay, soils, gravel, and other construction materials; (iii) Damp down exposed soil and any stockpiled on site by spraying with water when necessary during dry weather; (iv) Use tarpaulins to cover sand and other loose material when transported by trucks; and (v) Fit all heavy equipment and machinery with air pollution control devices which are operating correctly.	Construction Contractor	(i) Location of stockpiles; (ii) Complaints from sensitive receptors; (iii) Heavy equipment and machinery with air pollution control devices; (iv) Certification that vehicles are compliant with Air Act	Cost for implementation of mitigation measures responsibility of contractor.
Surface water quality	Mobilization of settled silt materials, and chemical contamination from fuels and lubricants during installation of pipelines can contaminate nearby surface water quality.	(i) Obtain specific instructions on disposal/reuse of desilted materials; (ii) Prepare and implement a spoils management plan (Appendix 5) (iii) Avoid stockpiling of earth fill especially during the monsoon season unless covered by tarpaulins or plastic sheets; (iv) Install temporary silt traps or sedimentation basins along the drainage	Construction Contractor	(i) Areas for stockpiles, storage of fuels and lubricants and waste materials; (ii) Number of silt traps installed along trenches leading to water bodies; (iii) Records of surface water quality inspection; (iv) Effectiveness of water management measures; (v) No visible degradation to nearby drainages, nallahs or	Cost for implementation of mitigation measures responsibility of contractor.

Field	Anticipated Impact	Mitigation Measures	Responsible for Mitigation	Monitoring of Mitigation	Cost and Source of Funds
		leading to the water bodies; (v) Place storage areas for fuels and lubricants away from any drainage leading to water bodies; (vi) Dispose any wastes generated by installation of pipeline in designated sites; and (vii) Conduct surface quality inspection according to the Environmental Management Plan (EMP).		waterbodies due to civil works	
Noise Levels	Increase in noise level due to earth-moving and excavation equipment, and the transportation of equipment, materials, and people	(i) Plan activities in consultation with PMU/CSS so that activities with the greatest potential to generate noise are conducted during periods of the day which will result in least disturbance; (ii) Horns should not be used unless it is necessary to warn other road users or animals of the vehicle's approach; (iii) Minimize noise from construction equipment by using vehicle silencers, fitting jackhammers with noise-reducing mufflers, and portable street barriers the sound impact to surrounding sensitive receptor; and	Construction Contractor	(i) Complaints from sensitive receptors; (ii) Use of silencers in noise-producing equipment and sound barriers; (iii) Equivalent day and night time noise levels (See Section II of this IEE)	Cost for implementation of mitigation measures responsibility of contractor.

Field	Anticipated Impact	Mitigation Measures	Responsible for Mitigation	Monitoring of Mitigation	Cost and Source of Funds
		(iv) Maintain maximum sound levels not exceeding 80 decibels (dbA) when measured at a distance of 10 m or more from the vehicle/s.			
Landscape and aesthetics	Impacts due to excess excavated earth, excess construction materials, and solid waste such as removed concrete, wood, packaging materials, empty containers, spoils, oils, lubricants, and other similar items.	(i) Obtain specific instructions on disposal/reuse of desilted materials; (ii) Prepare and implement spoils management plan (Appendix 5); (iii) Avoid stockpiling of excess excavated soils; (iv) Coordinate with ULB/CMC for beneficial uses of excess excavated soils or immediately dispose to designated areas; (v) Recover used oil and lubricants and reuse or remove from the sites; (vi) Manage solid waste according to the following preference hierarchy: reuse, recycling and disposal to designated areas; (vii) Remove all wreckage, rubbish, or temporary structures which are no longer required; and (viii) Request PMU/CSS to report in writing that the necessary environmental	Construction Contractor	(i) Complaints from sensitive receptors; (ii) Worksite clear of hazardous wastes such as oil/fuel (iv) Worksite clear of any excess excavated earth, excess construction materials, and solid waste such as removed concrete, wood, packaging materials, empty containers	Cost for implementation of mitigation measures responsibility of contractor.

Field	Anticipated Impact	Mitigation Measures	Responsible for Mitigation	Monitoring of Mitigation	Cost and Source of Funds
		restoration work has been adequately performed before acceptance of work.			
Existing Infrastructure and Facilities	Disruption of service and damage to existing infrastructure at specified project location	(i) Obtain from PMU/CSS the list of affected utilities and operators if any; (ii) Prepare a contingency plan to include actions to be done in case of unintentional interruption of service	Construction Contractor	Existing Utilities Contingency Plan	Cost for implementation of mitigation measures responsibility of contractor.
Ecological Resources – Terrestrial	Loss of vegetation and tree cover	(i) Minimize removal of vegetation and disallow cutting of trees; (ii) If tree-removal will be required, obtain tree-cutting permit from the Forest Department; and (iii) Plant two native trees for every one that is removed.	Construction Contractor	PMU/CSS to report in writing the no of trees cut and planted.	Cost for implementation of mitigation measures responsibility of contractor.
Land use	Environmental Issues due to land use change	The impact due to change in land use will be negligible due to this project.	Not applicable	Not applicable	Not applicable
Accessibility	Traffic problems and conflicts near project locations and haul road	(i) Plan transportation routes so that heavy vehicles do not use narrow local roads, except in the immediate vicinity of delivery sites; (ii) Schedule transport and hauling activities during non-peak hours; (iii) Locate entry and exit points in areas where there is low potential for	Construction Contractor	(i) Traffic route during construction works including number of permanent signages, barricades and flagmen on worksite (Appendix 6); (ii) Complaints from sensitive receptors; (iii) Number of signages placed at project location.	Cost for implementation of mitigation measures responsibility of contractor.

Field	Anticipated Impact	Mitigation Measures	Responsible for Mitigation	Monitoring of Mitigation	Cost and Source of Funds
		<p>traffic congestion;</p> <p>(iv) Keep the site free from all unnecessary obstructions;</p> <p>(v) Drive vehicles in a considerate manner;</p> <p>(vi) Coordinate with Traffic Police for temporary road diversions and with for provision of traffic aids if transportation activities cannot be avoided during peak hours;</p> <p>(vii) Notify affected sensitive receptors 2 days in advance by providing sign boards informing nature and duration of construction works and contact numbers for concerns/complaints.</p> <p>(viii) Plan and execute the work in such a way that the period of disturbance/ loss of access is minimum.</p> <p>(iii) Provide pedestrian access in all the locations until normalcy is restored.</p>			
Socio-Economic – Income.	Impede the access of residents and customers to nearby shops	<p>(i) Obtain specific instructions on disposal/reuse of desilted materials;</p> <p>(ii) Prepare and implement spoils management plan (Appendix 4)</p>	Construction Contractor	<p>(i) Complaints from sensitive receptors;</p> <p>(ii) Spoils management plan</p> <p>(iii) Number of walkways, signages, and metal sheets placed at project</p>	Cost for implementation of mitigation measures responsibility of contractor.

Field	Anticipated Impact	Mitigation Measures	Responsible for Mitigation	Monitoring of Mitigation	Cost and Source of Funds
		(iii) Leave spaces for access between mounds of soil; (iv) Provide walkways and metal sheets where required for people; (v) Increase workforce in front of critical areas such as institutions, place of worship, business establishment, hospitals, and schools; (vi) Consult businesses and institutions regarding operating hours and factoring this in work schedules. Consider night works in busy commercial areas; and (vii) Provide sign boards for pedestrians to inform nature and duration of construction works and contact numbers for concerns/complaints.		location.	
Socio-Economic - Employment	Generation of contractual employment and increase in local revenue	(i) Employ at least 50% of the labor force, or to the maximum extent, local persons within the 2-km immediate area if manpower is available; (ii) Secure construction materials from local market. (iii) Comply with core labor laws	Construction Contractor	(i) Employment records; (ii) Records of sources of materials (iii) Compliance to core labor laws (See appendix 3 of this IEE)	Cost for implementation of mitigation measures responsibility of contractor.
Occupational Health and Safety	Occupational hazards which can	(i) Comply with all national, state and local	Construction Contractor	(i) Site-specific OH&S Plan;	Cost for implementation of

Field	Anticipated Impact	Mitigation Measures	Responsible for Mitigation	Monitoring of Mitigation	Cost and Source of Funds
	arise during work	<p>core labor laws (See Section II of this IEE)</p> <p>(ii) Develop and implement site-specific occupational health and safety (OH&S) Plan which will include measures such as: (a) excluding public from the site; (b) ensuring all workers are provided with and use personal protective equipment like helmet, gumboot, safety belt, gloves, nose mask and ear plugs; (c) OH&S Training for all site personnel; (d) documented procedures to be followed for all site activities; and (e) documentation of work-related accidents;</p> <p>(ii) Ensure that qualified first-aid can be provided at all times. Equipped first-aid stations shall be easily accessible throughout the site;</p> <p>(iii) Provide medical insurance coverage for workers;</p> <p>(iv) Secure all installations from unauthorized intrusion and accident risks;</p> <p>(v) Provide supplies of potable drinking water;</p>		<p>(ii) Equipped first-aid stations;</p> <p>(iii) Medical insurance coverage for workers;</p> <p>(iv) Number of accidents;</p> <p>(v) Supplies of potable drinking water;</p> <p>(vi) Clean eating areas where workers are not exposed to hazardous or noxious substances;</p> <p>(vii) record of H&S orientation trainings</p> <p>(viii) personal protective equipment;</p> <p>(ix) % of moving equipment outfitted with audible back-up alarms;</p> <p>(xi) permanent sign boards for hazardous areas such as energized electrical devices and lines, service rooms housing high voltage equipment, and areas for storage and disposal.</p> <p>(xii) Compliance to core labor laws (See appendix 3 of this IEE)</p>	mitigation measures responsibility of contractor.

Field	Anticipated Impact	Mitigation Measures	Responsible for Mitigation	Monitoring of Mitigation	Cost and Source of Funds
		<p>(vi) Provide clean eating areas where workers are not exposed to hazardous or noxious substances;</p> <p>(vii) Provide H&S orientation training to all new workers to ensure that they are apprised of the basic site rules of work at the site, personal protective protection, and preventing injuring to fellow workers;</p> <p>(viii) Provide visitor orientation if visitors to the site can gain access to areas where hazardous conditions or substances may be present. Ensure also that visitor/s do not enter hazard areas unescorted;</p> <p>(ix) Ensure the visibility of workers through their use of high visibility vests when working in or walking through heavy equipment operating areas;</p> <p>(x) Ensure moving equipment is outfitted with audible back-up alarms;</p> <p>(xi) Mark and provide sign boards for hazardous areas such as energized electrical devices and lines, service rooms housing high voltage</p>			

Field	Anticipated Impact	Mitigation Measures	Responsible for Mitigation	Monitoring of Mitigation	Cost and Source of Funds
		equipment, and areas for storage and disposal. Signage shall be in accordance with international standards and be well known to, and easily understood by workers, visitors, and the general public as appropriate; and (xii) Disallow worker exposure to noise level greater than 85 dBA for a duration of more than 8 hours per day without hearing protection. The use of hearing protection shall be enforced actively.			
Community Health and Safety.	Traffic accidents and vehicle collision with pedestrians during material and waste transportation	(i) Plan routes to avoid times of peak-pedestrian activities. (ii) Liaise with PMU/CSS in identifying high-risk areas on route cards/maps. (iii) Maintain regularly the vehicles and use of manufacturer-approved parts to minimize potentially serious accidents caused by equipment malfunction or premature failure. (iv) Provide road signs and flag persons to warn of on-going trenching activities.	Construction Contractor	(i) Traffic Management Plan; (ii) Complaints from sensitive receptors	Cost for implementation of mitigation measures responsibility of contractor.
Work Camps and	Temporary air and	(i) Consult with PMU/CSS	Construction	(i) Complaints from	Cost for

Field	Anticipated Impact	Mitigation Measures	Responsible for Mitigation	Monitoring of Mitigation	Cost and Source of Funds
worksites	<p>noise pollution from machine operation, water pollution from storage and use of fuels, oils, solvents, and lubricants</p> <p>Unsanitary and poor living conditions for workers</p>	<p>before locating project offices, sheds, and construction plants;</p> <p>(ii) Minimize removal of vegetation and disallow cutting of trees;</p> <p>(iii) Provide drinking water, water for other uses, and sanitation facilities for employees;</p> <p>(iv) Ensure conditions of liveability at work camps are maintained at the highest standards possible at all times;</p> <p>Prohibit employees from poaching wildlife and cutting of trees for firewood;</p> <p>(v) Train employees in the storage and handling of materials which can potentially cause soil contamination;</p> <p>(vi) Recover used oil and lubricants and reuse or remove from the site;</p> <p>(vii) Manage solid waste according to the preference hierarchy: reuse, recycling and disposal to designated areas;</p> <p>(viii) Ensure unauthorized persons specially children are not allowed in any worksite at any given time.</p>	Contractor	sensitive receptors; (ii) Drinking water and sanitation facilities for employees	implementation of mitigation measures responsibility of contractor.

Field	Anticipated Impact	Mitigation Measures	Responsible for Mitigation	Monitoring of Mitigation	Cost and Source of Funds
Social and Cultural Resources	Risk of archaeological chance finds	(i) Strictly follow the protocol for chance finds in any excavation work; (ii) Request PMU/CSS or any authorized person with archaeological field training to observe excavation; (iii) Stop work immediately to allow further investigation if any finds are suspected; (iv) Inform PMU/CSS if a find is suspected, and take any action they require ensuring its removal or protection in situ.	Construction Contractor	Records of chance finds	Cost for implementation of mitigation measures responsibility of contractor.
Submission of EMP implementation report	Unsatisfactory compliance to EMP	(i) Appointment of supervisor to ensure EMP implementation (ii) Timely submission of monitoring reports including pictures	Construction contractor	Availability and competency of appointed supervisor Monthly report	Cost for implementation of mitigation measures responsibility of contractor.
Post-construction clean-up	Damage due to debris, spoils, excess construction materials	(i) Remove all spoils wreckage, rubbish, or temporary structures (such as buildings, shelters, and latrines) which are no longer required; and (ii) All excavated roads shall be reinstated to original condition. (iii) All disrupted utilities restored (iv) All affected structures rehabilitated/compensated	Construction Contractor	PMU/CSS report in writing that (i) worksite is restored to original conditions; (ii) camp has been vacated and restored to pre-project conditions; (iii) all construction related structures not relevant to O&M are removed; and (iv) worksite clean-up is satisfactory.	Cost for implementation of mitigation measures responsibility of contractor.

Field	Anticipated Impact	Mitigation Measures	Responsible for Mitigation	Monitoring of Mitigation	Cost and Source of Funds
		<p>(v) The area that previously housed the construction camp is to be checked for spills of substances such as oil, paint, etc. and these shall be cleaned up.</p> <p>(vi) All hardened surfaces within the construction camp area shall be ripped, all imported materials removed, and the area shall be topsoiled and regrassed using the guidelines set out in the revegetation specification that forms part of this document.</p> <p>(vii) The contractor must arrange the cancellation of all temporary services.</p> <p>(viii) Request PMU/CSS to report in writing that worksites and camps have been vacated and restored to pre-project conditions before acceptance of work.</p>			

Table 5: Environmental Management Plan of Anticipated Impacts during Operation

Field	Anticipated Impact	Mitigation Measures	Responsible for Mitigation	Monitoring of Mitigation	Cost and Source of Funds
Maintenance interceptor drains	Flooding due to choking of drains	- Ensure interceptor drains are periodically cleaned, especially before monsoon season to facilitate quick	CMC	CMC	CMC cost

Field	Anticipated Impact	Mitigation Measures	Responsible for Mitigation	Monitoring of Mitigation	Cost and Source of Funds
		passage of rainwater and avoid flooding.			

A. Institutional Requirements

77. **Government.** Karnataka Urban Infrastructure Development & Finance Corporation (KUIDFC) is the Executing Agency (EA) responsible for overall technical supervision and execution of all projects funded under the investment program. Implementation activities will be overseen by a separate Program Management Unit (PMU). The investment program is divided into four packages, for ease of operation and monitoring. The PMU is headed by an executive program director based in Dharwad and have four deputy program directors, one for each package. A team of senior technical, administrative and financial officials, including a state-level environmental specialist and a regional-level environmental specialist, will assist the PMU in managing and monitoring program implementation activities. The ultimate implementation responsibility lies with ULBs/CMCs in coordination with various other departments of Government of Karnataka. Assistant Executive Engineer (AEE) of ULBs/CMCs supervises the project implementation including the environmental safeguards.

78. A state-level environmental specialist at PMU will look after the environmental safeguards related aspects of the project to be assisted by a regional-level environment specialist. Each divisional program office will have an environmental specialist to assist the regional environmental specialist in environmental safeguards related aspects.

79. **Consultants.** Each Divisional Program Director is being assisted by a consultant team in project planning, preparation of project and cost estimates, coordination, technical guidance and supervision, financial control, training and overall project management. The consultant team includes an environmental specialist to supervise the implementation of environmental safeguards at the divisional level. The consultant team also includes a construction supervision specialist (CSS) at each ULB/CMC responsible for the supervision of project implementation including environmental safeguards at the ULB/CMC level.

80. **Contractor.** The contractor shall appoint one supervisor who will be responsible on a day-to-day basis for (i) ensuring implementation of EMP, (ii) coordinating with the CSS and environment specialists (all levels); (iii) community liaison, consultations with interested/affected parties, and grievance redressal; and (iv) reporting.

81. The following figure and table summarizes the institutional responsibility of environmental safeguards at all stages of the project.

Figure 2: Environmental Safeguards Implementation Arrangement

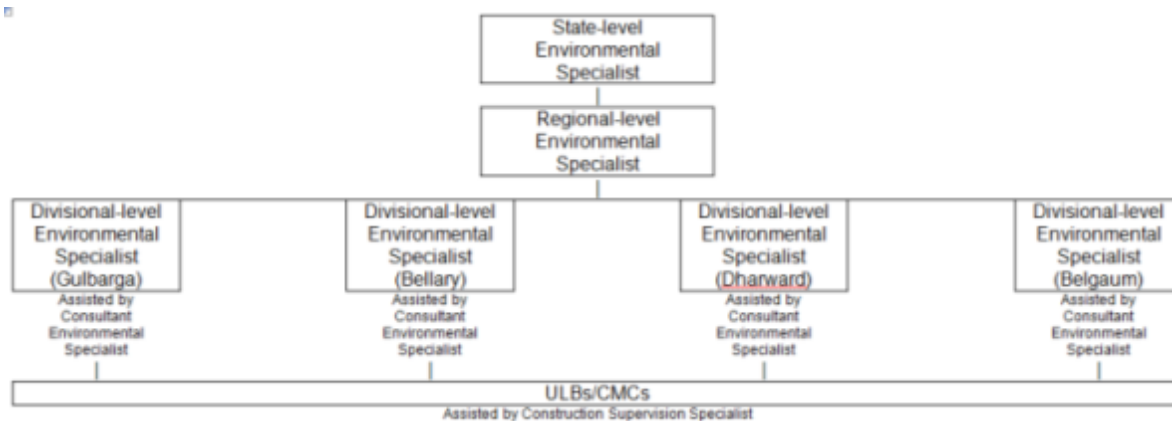


Table 6: Institutional Roles and Responsibilities

Responsible Agency	Responsibility		
	Pre-Construction Stage	Construction Stage	Post-Construction
State Environmental Specialist	(i) Review REA checklists and assign categorization based on ADB SPS (ii) Review and approve EIA/IEE (iii) Submit EIA/IEE to ADB for approval and disclosure in ADB website (iv) Ensure approved IEEs are disclosed in KUIDFC website and summary posted in public areas accessible and understandable by local people. (v) Ensure environmental management plans (EMPs) are included in the bid documents and contracts (vi) Organize an orientation workshop for PMU, ULBs/CMCs, and all staff involved in the project implementation on	(i) State environment specialist responsible for over-all environmental safeguards compliance of the project (ii) Prepare and submit to ADB semi-annual monitoring reports (iii) Review and submit Corrective Action Plans to ADB (iv) Organize capacity building programs on environmental safeguards (iv) Coordinate with national and state level government agencies (vi) Assist in addressing any grievances brought about through the Grievance Redress Mechanism in a timely manner as per the IEEs	Compliance monitoring to review the environmental performance of project component, if required and as specified in EMP
Regional Environmental Specialist	(a) ADB SPS, (b) Government of India national, state, and local environmental laws and regulations, (c) core labor standards, (d) OH&S, (e) EMP implementation especially spoil management, working in congested areas, public relations and ongoing consultations, grievance redress, etc. (vii) Assist in addressing any grievances brought about through the Grievance Redress Mechanism in a timely manner as per the IEEs (viii) Organize an induction course for the training of contractors preparing them on EMP implementation, environmental monitoring requirements related to mitigation measures; and	(i) Review quarterly monitoring report (ii) Assist in the preparation of semi-annual monitoring reports (iii) Monitor and ensure compliance of EMPs as well as any other environmental provisions and conditions. (iv) If necessary prepare Corrective Action Plan and ensure implementation of corrective actions to ensure no environmental impacts; (v) Organize capacity building programs on environmental safeguards at regional level (vi) Coordinate with regional level government agencies (vii) Assist in addressing any grievances brought about through the Grievance Redress Mechanism in a timely	Compliance monitoring to review the environmental performance of project component, if required and as specified in EMP

Responsible Agency	Responsibility		
	Pre-Construction Stage	Construction Stage	Post-Construction
	<p>taking immediate actions to remedy unexpected adverse impacts or ineffective mitigation measures found during the course of implementation.</p> <p>(ix) Ensure compliance with all government rules and regulations regarding site and environmental clearances as well as any other environmental requirements</p> <p>(x) Assist PMU, PIUs, and project NGOs to document and develop good practice construction guidelines to assist the contractors in</p>	<p>manner as per the IEEs (viii) Assist in overseeing implementation of the EMP during construction including environmental, health and safety monitoring of contractors;</p> <p>(ix) Coordinate with the state- and divisional level environmental specialists, ULBs/CMCs, NGOs, consultants and contractors on mitigation measures involving the community and affected persons and ensure that environmental concerns and suggestions are incorporated and implemented</p>	
Divisional Environmental Specialist	<p>implementing the provisions of IEE.</p> <p>(xi) Assist in the review of the contractors' implementation plans to ensure compliance with the IEE.</p>	<p>(i) Review monthly monitoring report. Prepare quarterly monitoring report</p> <p>(ii) Prepare Corrective Action Plans if necessary</p> <p>(iv) Organize capacity building programs on environmental safeguards at divisional level</p> <p>(iv) Coordinate with regional level government agencies</p> <p>(vi) Assist in addressing any grievances brought about through the Grievance Redress Mechanism in a timely manner as per the IEEs</p>	Compliance monitoring to review the environmental performance of project component, if required and as specified in EMP
ULB/CMC	<p>(i) Conduct initial environmental assessment for proposed project using REA checklists and submit to PMU</p> <p>(ii) Prepare EIA/IEE based on categorization and submit to PMU for approval</p> <p>(iii) Ensure IEE is included in bid documents and contract agreements. Ensure cost of EMP implementation is</p>	<p>(i) Ensure EMP implementation is included in measuring works carried out by the contractors and certifying payments.</p> <p>(ii) Ensure Corrective Action Plan is implemented.</p> <p>(ii) Conduct public awareness campaigns and participation programs</p> <p>(iii) Prepare monthly reports.</p>	<p>(i) Conducting environmental monitoring, as specified in the EMP.</p> <p>(ii) Issuance of clearance for contractor's post-construction activities as specified in the EMP.</p>

Responsible Agency	Responsibility		
	Pre-Construction Stage	Construction Stage	Post-Construction
	<p>provided.</p> <p>(iv) Disclose approved EIAs/IEEs.</p> <p>(v) Obtain all necessary clearances, permits, consents, NOCs, etc.</p> <p>Ensure compliance to the provisions and conditions.</p> <p>(vi) EMP implementation regarding sites for disposal of wastes, camps, storage areas, quarry sites, etc.</p> <p>(vii) Ensure contractors undergo EMP implementation orientation prior to start of civil works</p>	<p>(vi) Address any grievances brought about through the Grievance Redress Mechanism in a timely manner as per the IEEs</p>	
<p>Consultant Environment Specialist at divisional level</p> <p>Construction Consultant Specialist at ULB/CMC level</p>	<p>(i) Assist ULBs/CMCs in preparation of REA checklists and EIAs/IEEs</p> <p>(ii) Assist ULBs/CMCs in obtaining all necessary clearances, permits, consents, NOCs, etc. Ensure provisions and conditions are incorporated in the IEE and detailed design documents.</p> <p>(iii) Assist in ensuring IEE is included in bid documents and contract agreements. Assist in determining adequacy of cost for EMP implementation.</p> <p>(iv) Assist in addressing any concern related to IEE and EMP.</p> <p>(v) Assist in summarizing IEE and translating to language understood by local people.</p>	<p>(i) Monitor EMP implementation</p> <p>(ii) Recommend corrective action measures for non-compliance by contractors</p> <p>(iii) Assist in the review of monitoring reports submitted by contractors</p> <p>(iv) Assist in the preparation of monthly reports</p> <p>(vi) Assist in addressing any grievances brought about through the Grievance Redress Mechanism in a timely manner as per the IEEs</p>	<p>(i) Assist in the inspection and verification of contractor's post-construction activities.</p>
Contractors	<p>(i) Ensure EMP implementation cost is included in the methodology.</p> <p>(ii) Undergo EMP implementation orientation prior to award of contract</p> <p>(iii) Provide EMP implementation</p>	<p>(i) Implement EMP.</p> <p>(ii) Implement corrective actions if necessary.</p> <p>(iii) Prepare and submit monitoring reports including pictures to ULB/CMC</p> <p>(iv) Comply with all applicable legislation, is conversant with the</p>	<p>(i) Ensure EMP post-construction requirements are satisfactorily complied</p> <p>(ii) Request certification from ULBs/CMCs</p>

Responsible Agency	Responsibility		
	Pre-Construction Stage	Construction Stage	Post-Construction
	orientation to all workers prior to deployment to worksites (iv) Seek approval for camp sites and sources of materials. (v) Ensure copy of IEE is available at worksites. Summary of IEE is translated to language understood by workers and posted at visible places at all times.	requirements of the EMP; (v) Brief his staff, employees, and laborer about the requirements of the EMP and provide environmental awareness training to staff, employees, and laborers; (vi) Ensure any sub-contractors/ suppliers who are utilized within the context of the contract comply with all requirements of the EMP. The Contractor will be held responsible for non-compliance on their behalf; (vii) Bear the costs of any damages/compensation resulting from non-adherence to the EMP or written site instructions; (viii) Ensure that ULBs/CMCs and CSS are timely informed of any foreseeable activities related to EMP implementation. (vi) Address any grievances brought about through the Grievance Redress Mechanism in a timely manner as per the IEEs	

B. Training Needs

The following table presents the outline of capacity building program to ensure EMP implementation. The estimated cost is \$12,000 (excluding trainings of contractors which will be part of EMP implementation cost during construction) to be covered by the project's capacity building program. The detailed cost and specific modules will be customized for the available skill set after assessing the capabilities of the target participants and the requirements of the project.

Table 7: Outline Capacity Building Program on EMP Implementation

Description	Target Participants	Estimate (US\$)	Cost and Source of Funds
1. Sensitization (1 day) - ADB Safeguards Policy Statement - Government of India and	All staff and consultants involved in the project	Lumpsum - \$1,500	PMU cost

Description	Target Participants	Estimate (US\$)	Cost and Source of Funds
Karnataka applicable safeguard laws, regulations and policies including but not limited to core labor standards, OH&S, etc - Incorporation of EMP into the project design and contracts - Monitoring, reporting and corrective action planning			
2. EMP implementation (3 days) - Roles and responsibilities - OH&S planning and implementation - Wastes management (water, hazardous, solid, excess construction materials, spoils, etc) - Working in congested areas, - Public relations - Consultations - Grievance redress - Monitoring and corrective action planning - Reporting and disclosure - Post-construction planning	All staff and consultants involved in the project All contractors prior to award of contract	Lumpsum - \$4,500	PMU cost
3. Plans and Protocols (3 days) - Construction site standard operating procedures (SOP) - AC pipe protocol - Site-specific EMP - Traffic management plan - Spoils management plan - Waste management plan - Chance find protocol - O&M plans - Post-construction plan	All staff and consultants involved in the project All contractors prior to award of contract or during mobilization stage.	Lumpsum - \$4,500 Lumpsum - % of EMP Implementation Cost or % of contingency	PMU cost Contractors cost as compliance to contract provisions on EMP implementation (refer to EMP tables)
4. Experiences and best practices sharing - Experiences on EMP implementation - Issues and challenges - Best practices followed	All staff and consultants involved in the project All contractors All NGOs	Lumpsum - \$1,500	PMU Cost
5. Contractors Orientation to Workers on EMP implementation (OH&S, core labor laws, spoils management, etc)	All workers (including manual laborers) of the contractor prior to dispatch to worksite	Lumpsum - % of EMP Implementation Cost or % of contingency	Contractors cost as compliance to contract provisions on EMP implementation (refer to EMP tables)

C. Monitoring and Reporting

82. Prior to commencement of the work, the contractor will submit a compliance report to ULB/CMC ensuring that all identified pre-construction environmental impact mitigation measures as detailed in the EMP will be undertaken. ULB/CMC with the assistance of the consultant environment specialist will review the report and thereafter PMU will allow commencement of works.

83. During construction, results from internal monitoring by the contractor will be reflected in their weekly EMP implementation reports to the Construction Supervision Specialist. These weekly report will be retained in DSC office for reference. Construction Supervision Specialist will review and advise contractors for corrective actions if necessary. Monthly report summarizing compliance and corrective measures taken will be prepared by Construction Supervision Specialist to be reviewed and endorsed by ULB/CMC to PMU.

84. Based on monthly reports and measurements, PMU will draft, review, and submit to ADB, 6-monthly (twice a year) EMP implementation progress report (**Appendix 7**). Once concurrence from the ADB is received the report will be disclosed in the Project website.

85. ADB will review project performance against the NKUSIP's commitments as agreed in the legal documents. The extent of ADB's monitoring and supervision activities will be commensurate with the project's risks and impacts. Monitoring and supervising of social and environmental safeguards will be integrated into the project performance management system

D. EMP Implementation Cost

86. Most of the mitigation measures require the contractors to adopt good site practice, which should be part of their normal procedures already, so there are unlikely to be major costs associated with compliance. Regardless of this, any costs of mitigation by the construction contractors or consultants are included in the budgets for the civil works and do not need to be estimated separately here. Mitigation that is the responsibility of ULBs/CMCs will be provided as part of their management of the project, so this also does not need to be duplicated here. Cost for the capacity building program is included as part of the project.

Table 8: Cost Estimates to Implement the EMP

	Particulars	Stages	Unit	Total Number	Rate (USD)	Cost (USD)	Costs Covered By
A.	Mitigation Measures						
1	Compensatory plantation measures		Per tree	20	50	1,000	Civil works contract
	Subtotal (A)					1,000	
B.	Monitoring Measures						
	Air quality monitoring	Construction	Per location	20	100	2,000	Civil works contract
	Noise levels	Construction	Per	20	50	1,000	Civil

	Particulars	Stages	Unit	Total Number	Rate (USD)	Cost (USD)	Costs Covered By
	monitoring		location				works contract
	Subtotal (B)					3,000	
C.	Capacity Building						
1.	Introduction and sensitization to environment issues	Pre-construction	lump sum			1,500	PMU
2.	EMP implementation	Construction	lump sum			4,500	PMU
3.	Training Plans and Protocols	Construction	lump sum			4,500	PMU
4.	Experiences and best practices sharing	Construction/Post-Construction	lump sum			1,500	PMU
5.	Contractors Orientation to Workers on EMP implementation (OH&S, core labor laws, spoils management, etc)	Prior to dispatch to worksite	Lumpsum % of EMP Cost or % of contingency			2,000	Civil works contract
	Subtotal (C)					13,500	
	Total (A+B+C)				USD	18,000	

VII. FINDINGS AND RECOMMENDATIONS

87. The process described in this document has assessed the environmental impacts of all elements of the Raichur lake improvement project. All potential impacts were identified in relation to pre-construction, construction, and operation phases.

88. Planning principles and design considerations have been reviewed and incorporated into the site planning process whenever possible; thus, environmental impacts as being due to the project design or location were not significant. However, the social impacts (access disruptions) due to construction activities are unavoidable, as the residential and commercial establishments exist along the project corridor. A resettlement plan has been developed in accordance with ADB SPS 2009 and Government of India laws and regulations.

89. Anticipated impacts during operation and maintenance will be related to detection and repair of leaks and pipe bursts. These are, however, likely to be minimal, as proper design and selection of good quality pipe material shall mean that leaks are minimal. Leak repair work will be similar to the pipe-laying work.

90. The public participation processes undertaken during project design ensured stakeholders are engaged during the preparation of the IEE. The planned information disclosure measures and process for carrying out consultation with affected people will facilitate their participation during project implementation.

91. The project's grievance redressal mechanism will provide the citizens with a platform for redressal of their grievances, and describes the informal and formal channels, time frame, and mechanisms for resolving complaints about environmental performance.
92. The EMP will assist the PMU, MASC, and contractors in mitigating the environmental impacts, and guide them in the environmentally sound execution of the proposed project. The EMP will also ensure efficient lines of communication between the implementing agency, project management unit, and contractors.
93. A copy of the EMP shall be kept on-site during the construction period at all times. The EMP shall be made binding on all contractors operating on the site, and will be included in the contractual clauses. Non-compliance with, or any deviation from, the conditions set out in this document shall constitute a failure in compliance.
94. The project will benefit the general public by contributing to the long-term improvement of non-municipal infrastructure and community livability in Raichur. The potential adverse environmental impacts are mainly related to the construction period, which can be minimized by the mitigating measures and environmentally sound engineering and construction practices.
95. Therefore, as per ADB SPS, the project is classified as environmental category B and does not require further environmental impact assessment.

APPENDIX 1: NATIONAL AMBIENT AIR QUALITY STANDARDS BY CPCB

Sl No:	Pollutants	Time weighted average	Concentration in ambient air		Method of measurement
			Industrial, Residential, Rural & Other Areas	Ecologically Sensitive Areas	
1	Sulphur Dioxide (SO ₂) µg/m ³	Annual 24 hours	50 80	20 80	Improved West and Geake-Ultraviolet fluorescence
2	Nitrogen Dioxide (NO ₂) µg/m ³	Annual 24 hours	40 80	30 80	Modified Jacob & Hochheiser (Na-Arsenite) Chemiluminescence
3	Particulate Matter (Size less than 10 µm) or PM ₁₀ µg/m ³	Annual 24 hours	60 100	60 100	Gravimetric -TOEM -Beta attenuation
4	Particulate Matter (Size less than 2.5 µm) or PM _{2.5} µg/m ³	Annual 24 hours	40 60	40 60	Gravimetric -TOEM -Beta attenuation
5	Carbon Monoxide (CO) mg/m ³	8 hours 1 hours	02 04	02 04	Non Dispersive Infra Red (NDIR) Spectroscopy

APPENDIX 2: NATIONAL AMBIENT AIR QUALITY STANDARDS IN RESPECT OF NOISE

Area code	Category of area/zone	Limit in dB (A)	
		Day time	Night time
a	Industrial area	75	70
b	Commercial area	65	55
c	Residential area	55	45
d	Silence zone	50	40

APPENDIX 3: SALIENT FEATURES OF MAJOR LABOR LAWS INCLUDING AMENDMENTS ISSUED FROM TIME TO TIME APPLICABLE TO ESTABLISHMENTS ENGAGED IN CONSTRUCTION OF CIVIL WORKS

- (i) Workmen Compensation Act, 1923 - The Act provides for compensation in case of injury by accident arising out of and during the course of employment.
- (ii) Payment of Gratuity Act, 1972 - Gratuity is payable to an employee under the Act on satisfaction of certain conditions on separation if an employee has completed 5 years' service or more or on death at the rate of 15 days wages for every completed year of service. The Act is applicable to all establishments employing 10 or more employees.
- (iii) Employees' PF and Miscellaneous Provisions Act, 1952 - The Act provides for monthly contributions by the employer plus workers @10 % or 8.33 %. The benefits payable under the Act are: (a) Pension or family pension on retirement or death as the case may be; (b) deposit linked insurance on the death in harness of the worker; (c) payment of PF accumulation on retirement/death etc.
- (iv) Maternity Benefit Act, 1951 - The Act provides for leave and some other benefits to women employees in case of confinement or miscarriage etc.
- (v) Contract Labour (Regulation and Abolition) Act, 1970 - The Act provides for certain welfare measures to be provided by the Contractor to contract labor and in case the Contractor fails to provide, the same are required to be provided by the Principal Employer by Law. The principal employer is required to take Certificate of Registration and the Contractor is required to take a License from the designated Officer. The Act is applicable to the establishments or Contractor of principal employer if they employ 20 or more contract labor.
- (vi) Minimum Wages Act, 1948 - The employer is supposed to pay not less than the Minimum Wages fixed by appropriate Government as per provisions of the Act if the employment is a scheduled employment. Construction of Buildings, Roads, Runways are scheduled employment.
- (vii) Payment of Wages Act, 1936 - It lays down as to by what date the wages are to be paid, when it will be paid and what deductions can be made from the wages of the workers.
- (viii) Equal Remuneration Act, 1979 - The Act provides for payment of equal wages for work of equal nature to Male and Female workers and not for making discrimination against Female employees in the matters of transfers, training and promotions etc.
- (ix) Payment of Bonus Act, 1965 - The Act is applicable to all establishments employing 20 or more workmen. The Act provides for payments of annual bonus subject to a minimum of 8.33 % of wages and maximum of 20 % of wages to employees drawing Rs. 3,500/- per month or less. The bonus to be paid to employees getting Rs. 2,500/- per month or above up to Rs.3,500/- per month shall be worked out by taking wages as Rs.2,500/- per month only. The Act does not apply to certain establishments. The newly set up establishments are exempted for five years in certain circumstances. Some of the State Governments have reduced the employment size from 20 to 10 for the purpose of applicability of the Act.
- (x) Industrial Disputes Act, 1947 - The Act lays down the machinery and procedure for resolution of industrial disputes, in what situations a strike or lock-out becomes illegal and what

are the requirements for laying off or retrenching the employees or closing down the establishment.

(xi) Industrial Employment (Standing Orders) Act, 1946 - It is applicable to all establishments employing 100 or more workmen (employment size reduced by some of the States and Central Government to 50). The Act provides for laying down rules governing the conditions of employment by the employer on matters provided in the Act and get the same certified by the designated Authority.

(xii) Trade Unions Act, 1926 - The Act lays down the procedure for registration of trade unions of workmen and employees. The trade unions registered under the Act have been given certain immunities from civil and criminal liabilities.

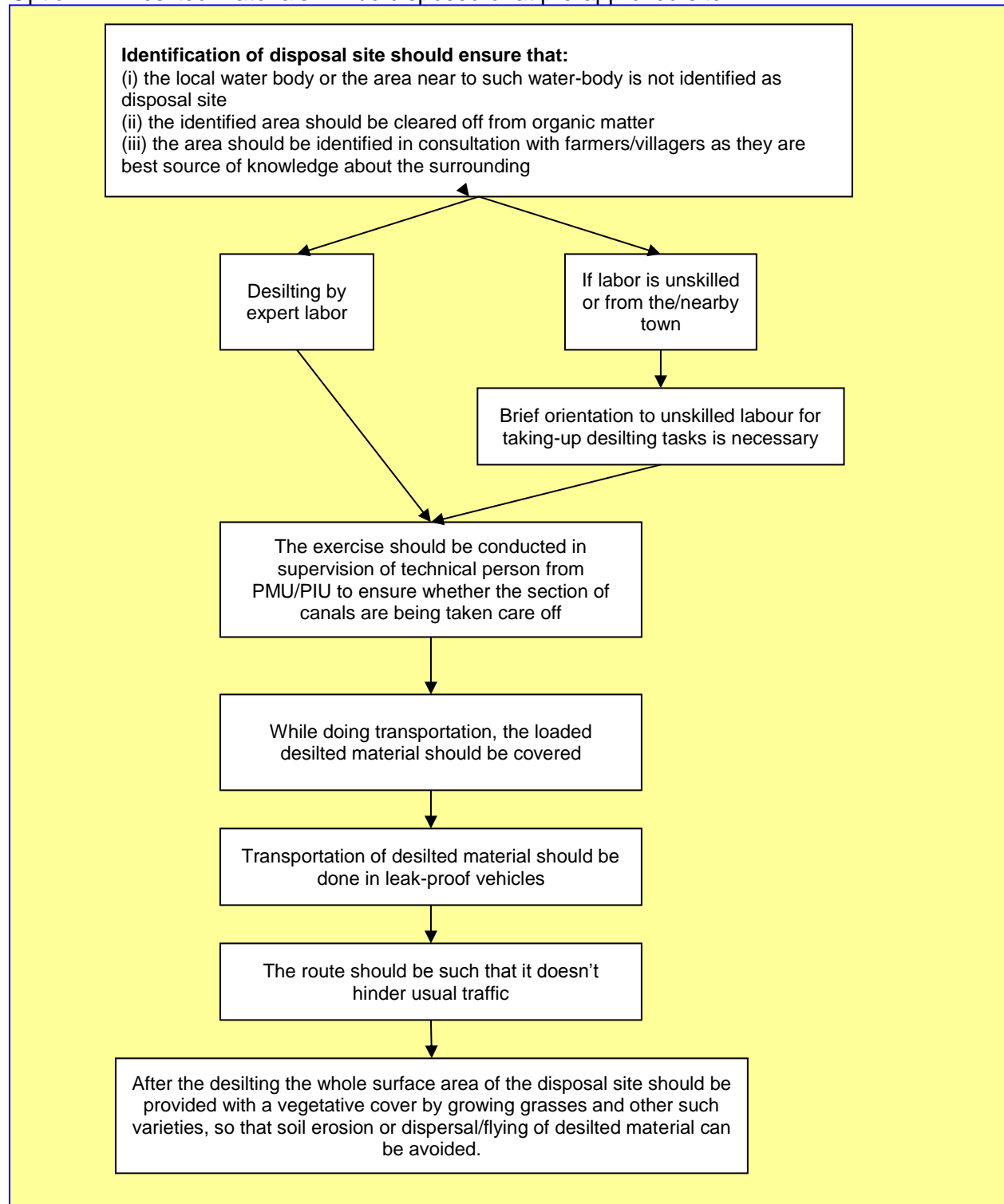
(xiii) Child Labor (Prohibition and Regulation) Act, 1986 - The Act prohibits employment of children below 14 years of age in certain occupations and processes and provides for regulation of employment of children in all other occupations and processes. Employment of child labor is prohibited in Building and Construction Industry.

(xiv) Inter-State Migrant Workmen's (Regulation of Employment and Conditions of Service) Act, 1979 - The Act is applicable to an establishment which employs 5 or more inter-state migrant workmen through an intermediary (who has recruited workmen in one state for employment in the establishment situated in another state). The inter-state migrant workmen, in an establishment to which this Act becomes applicable, are required to be provided certain facilities such as housing, medical aid, traveling expenses from home up to the establishment and back, etc

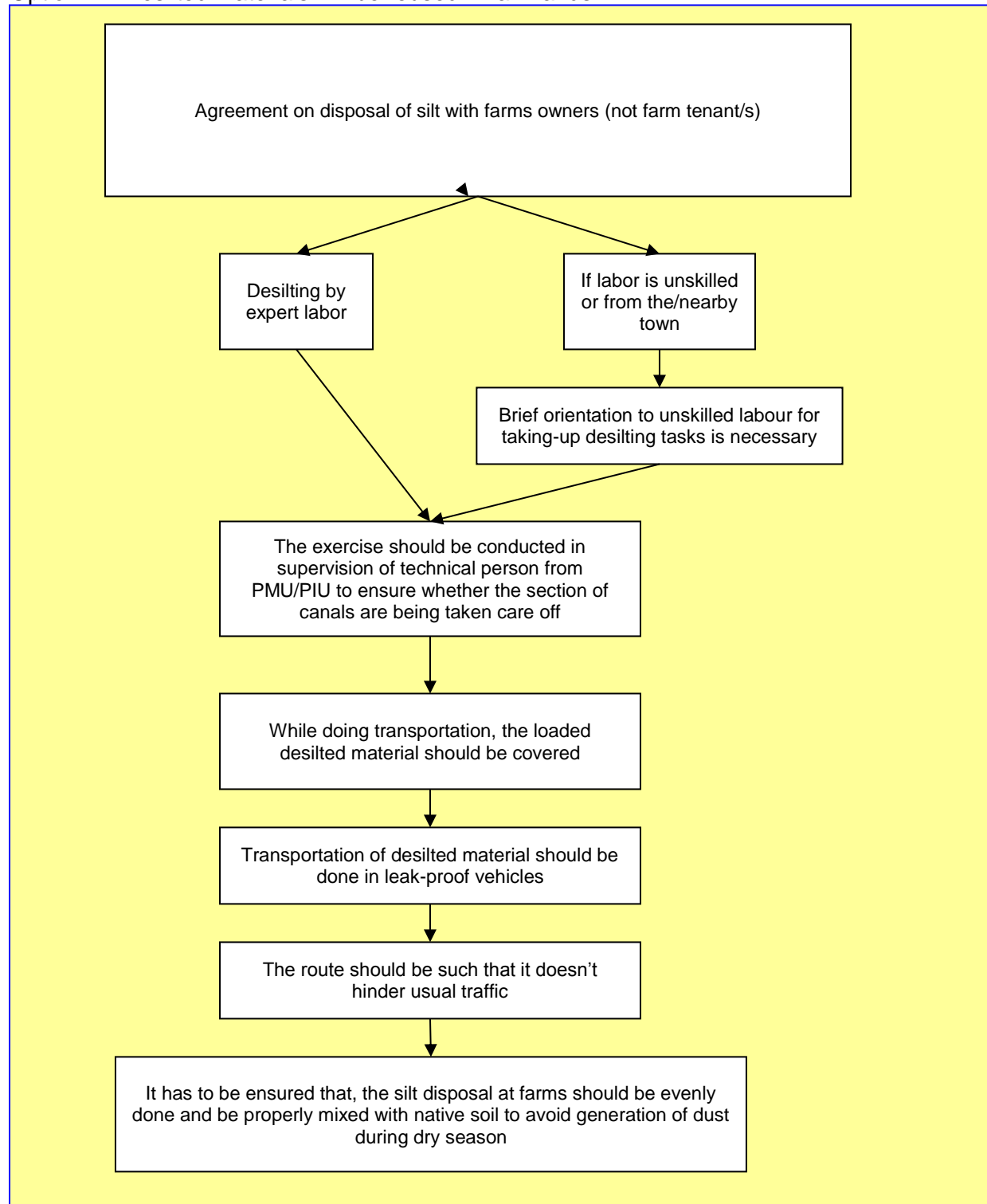
(xv) The Building and Other Construction Workers (Regulation of Employment and Conditions of Service) Act, 1996 and the Cess Act of 1996 - All the establishments who carry on any building or other construction work and employ 10 or more workers are covered under this Act. All such establishments are required to pay Cess at rate not exceeding 2% of the cost of construction as may be notified by the Government. The employer of the establishment is required to provide safety measures at the building or construction work and other welfare measures, such as canteens, first-aid facilities, ambulance, housing accommodation for workers near the workplace etc. The employer to whom the Act applies has to obtain a registration certificate from the Registering Officer appointed by the Government.

APPENDIX 4: OUTLINE FLOW CHARTS FOR DESILTED MATERIALS DISPOSAL AND REUSE

Option 1 – Desilted materials will be disposed of at pre-approved site



Option 2 – Desilted materials will be reused in farmlands



APPENDIX 5: SAMPLE OUTLINE SPOIL MANAGEMENT PLAN

- I. Spoils information
 - A. Materials type
 - B. Potential contamination
 - C. Expected volume and sources
 - D. Spoil classification
- II. Spoils management
 - A. Transportation of spoil
 - B. Storage of spoil
 - C. Contaminated spoil
 - D. Approved reuse and/or disposal sites
- III. Records of reuse and/or disposal

APPENDIX 6: SAMPLE OUTLINE TRAFFIC MANAGEMENT PLAN

A. Principles for TMP around the Water Pipes Construction Sites

1. One of the prime objectives of this TMP is to ensure the safety of all the road users along the work zone, and to address the following issues:

- (i) the safety of pedestrians, bicyclists, and motorists travelling through the construction zone;
- (ii) protection of work crews from hazards associated with moving traffic;
- (iii) mitigation of the adverse impact on road capacity and delays to the road users;
- (iv) maintenance of access to adjoining properties; and
- (v) addressing issues that may delay the project.

B. Operating Policies for TMP

2. The following principles will help promote safe and efficient movement for all road users (motorists, bicyclists, and pedestrians, including persons with disabilities) through and around work zones while reasonably protecting workers and equipment.

- (i) Make traffic safety and temporary traffic control an integral and high-priority element of every project from planning through design, construction, and maintenance.
- (ii) Inhibit traffic movement as little as possible.
- (iii) Provide clear and positive guidance to drivers, bicyclists, and pedestrians as they approach and travel through the temporary traffic control zone.
- (iv) Inspect traffic control elements routinely, both day and night, and make modifications when necessary.
- (v) Pay increased attention to roadside safety in the vicinity of temporary traffic control zones.
- (vi) Train all persons that select, place, and maintain temporary traffic control devices.
- (vii) Keep the public well informed.
- (viii) Make appropriate accommodation for abutting property owners, residents, businesses, emergency services, railroads, commercial vehicles, and transit operations.

3. **Figure A2 to Figure A12** illustrates the operating policy for TMP for the construction of water pipes and the sewers along various types of roads.

C. Analyze the impact due to street closure

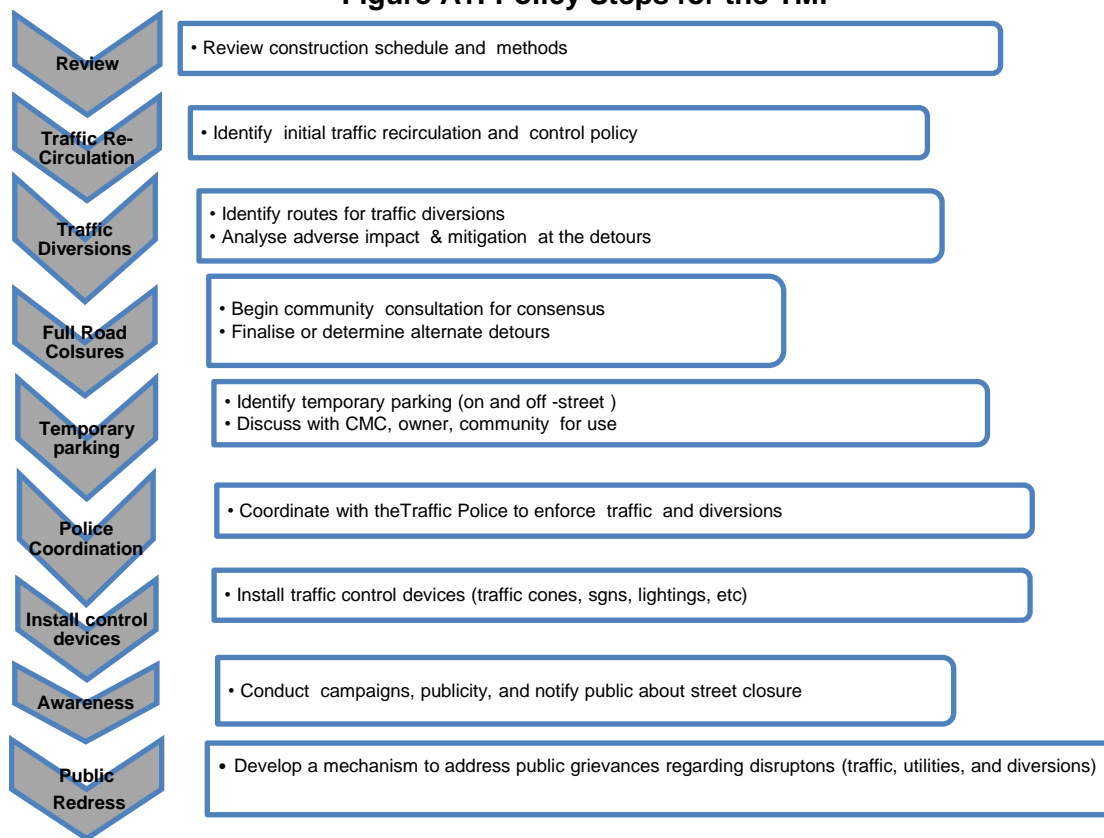
4. Apart from the capacity analysis, a final decision to close a particular street and divert the traffic should involve the following steps:

- (i) approval from the ULB/CMC/Public Works Department (PWD) to use the local streets as detours;
- (ii) consultation with businesses, community members, traffic police, PWD, etc, regarding the mitigation measures necessary at the detours where the road is diverted during the construction;
- (iii) determining of the maximum number of days allowed for road closure, and incorporation of such provisions into the contract documents;

- (iv) determining if additional traffic control or temporary improvements are needed along the detour route;
- (v) considering how access will be provided to the worksite;
- (vi) contacting emergency service, school officials, and transit authorities to determine if there are impacts to their operations; and
- (vii) developing a notification program to the public so that the closure is not a surprise. As part of this program, the public should be advised of alternate routes that commuters can take or will have to take as result of the traffic diversion.

5. If full road-closure of certain streets within the area is not feasible due to inadequate capacity of the detour street or public opposition, the full closure can be restricted to weekends with the construction commencing on Saturday night and ending on Monday morning prior to the morning peak period.

Figure A1: Policy Steps for the TMP



D. Public awareness and notifications

5. As per discussions in the previous sections, there will be travel delays during the constructions, as is the case with most construction projects, albeit on a reduced scale if utilities and traffic management are properly coordinated. There are additional grounds for travel delays in the area, as most of the streets lack sufficient capacity to accommodate additional traffic from diverted traffic as a result of street closures to accommodate the works.

6. The awareness campaign and the prior notification for the public will be a continuous activity which the project will carry out to compensate for the above delays and minimize public claims as result of these problems. These activities will take place sufficiently in advance of the time when the roadblocks or traffic diversions take place at the particular streets. The reason for this is to allow sufficient time for the public and residents to understand the changes to their travel plans. The project will notify the public about the roadblocks and traffic diversion through public notices, ward level meetings and city level meeting with the elected representatives.

7. The PIU will also conduct an awareness campaign to educate the public about the following issues:

- (i) traffic control devices in place at the work zones (signs, traffic cones, barriers, etc.);
- (ii) defensive driving behaviour along the work zones; and
- (iii) reduced speeds enforced at the work zones and traffic diversions.

8. It may be necessary to conduct the awareness programs/campaigns on road safety during construction.

9. The campaign will cater to all types of target groups i.e. children, adults, and drivers. Therefore, these campaigns will be conducted in schools and community centres. In addition, the project will publish a brochure for public information. These brochures will be widely circulated around the area and will also be available at the PIU, and the contractor's site office. The text of the brochure should be concise to be effective, with a lot of graphics. It will serve the following purpose:

- (i) explain why the brochure was prepared, along with a brief description of the project;
- (ii) advise the public to expect the unexpected;
- (iii) educate the public about the various traffic control devices and safety measures adopted at the work zones;
- (iv) educate the public about the safe road user behaviour to emulate at the work zones;
- (v) tell the public how to stay informed or where to inquire about road safety issues at the work zones (name, telephone, mobile number of the contact person; and
- (vi) indicate the office hours of relevant offices.

E. Install traffic control devices at the work zones and traffic diversion routes

10. The purpose of installing traffic control devices at the work zones is to delineate these areas to warn, inform, and direct the road users about a hazard ahead, and to protect them as well as the workers. As proper delineation is a key to achieve the above objective, it is important to install good traffic signs at the work zones. The following traffic control devices are used in work zones:

- Signs
- Pavement Markings
- Channelizing Devices
- Arrow Panels
- Warning Lights

11. Procedures for installing traffic control devices at any work zone vary, depending on road configuration, location of the work, construction activity, duration, traffic speed and volume, and pedestrian traffic. Work will take place along major roads, and the minor internal roads. As such, the traffic volume and road geometry vary. The main roads carry considerable traffic; internal roads in the new city areas are wide but in old city roads very narrow and carry considerable traffic. However, regardless of where the construction takes place, all the work zones should be cordoned off, and traffic shifted away at least with traffic cones, barricades, and temporary signs (temporary “STOP” and “GO”).

12. **Figure A2 to Figure A12** illustrates a typical set-up for installing traffic control devices at the work zone of the area, depending on the location of work on the road way, and road geometrics:

- Work on shoulder or parking lane
- Shoulder or parking lane closed on divided road
- Work in Travel lane
- Lane closure on road with low volume
- Lane closure on a two-line road with low volume (with yield sign)
- Lane closure on a two-line road with low volume (one flagger operation)
- Lane closure on a two lane road (two flagger operation)
- Lane closure on a four lane undivided Road
- Lane closure on divided roadway
- Half road closure on multi-lane roadway
- Street closure with detour

13. The work zone should take into consideration the space required for a buffer zone between the workers and the traffic (lateral and longitudinal) and the transition space required for delineation, as applicable. For the works, a 30 cm clearance between the traffic and the temporary STOP and GO signs should be provided. In addition, at least 60 cm is necessary to install the temporary traffic signs and cones.

14. Traffic police should regulate traffic away from the work zone and enforce the traffic diversion result from full street closure in certain areas during construction. Flaggers/ personnel should be equipped with reflective jackets at all times and have traffic control batons (preferably the LED type) for regulating the traffic during night time.

16. In addition to the delineation devices, all the construction workers should wear fluorescent safety vests and helmets in order to be visible to the motorists at all times. There should be provision for lighting beacons and illumination for night constructions.

Figure A2 & A3: Work on shoulder or parking lane & Shoulder or parking lane closed on divided road)

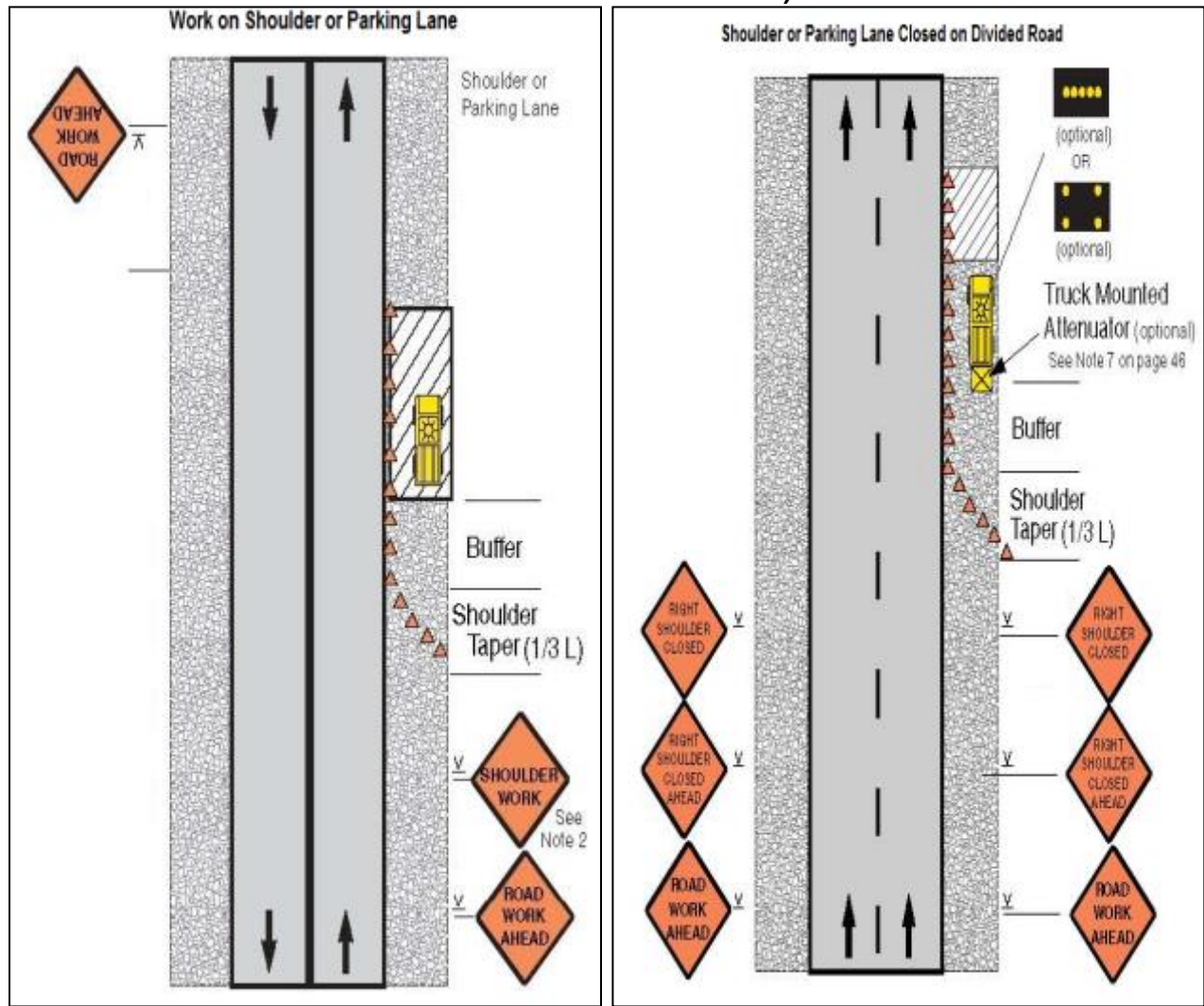
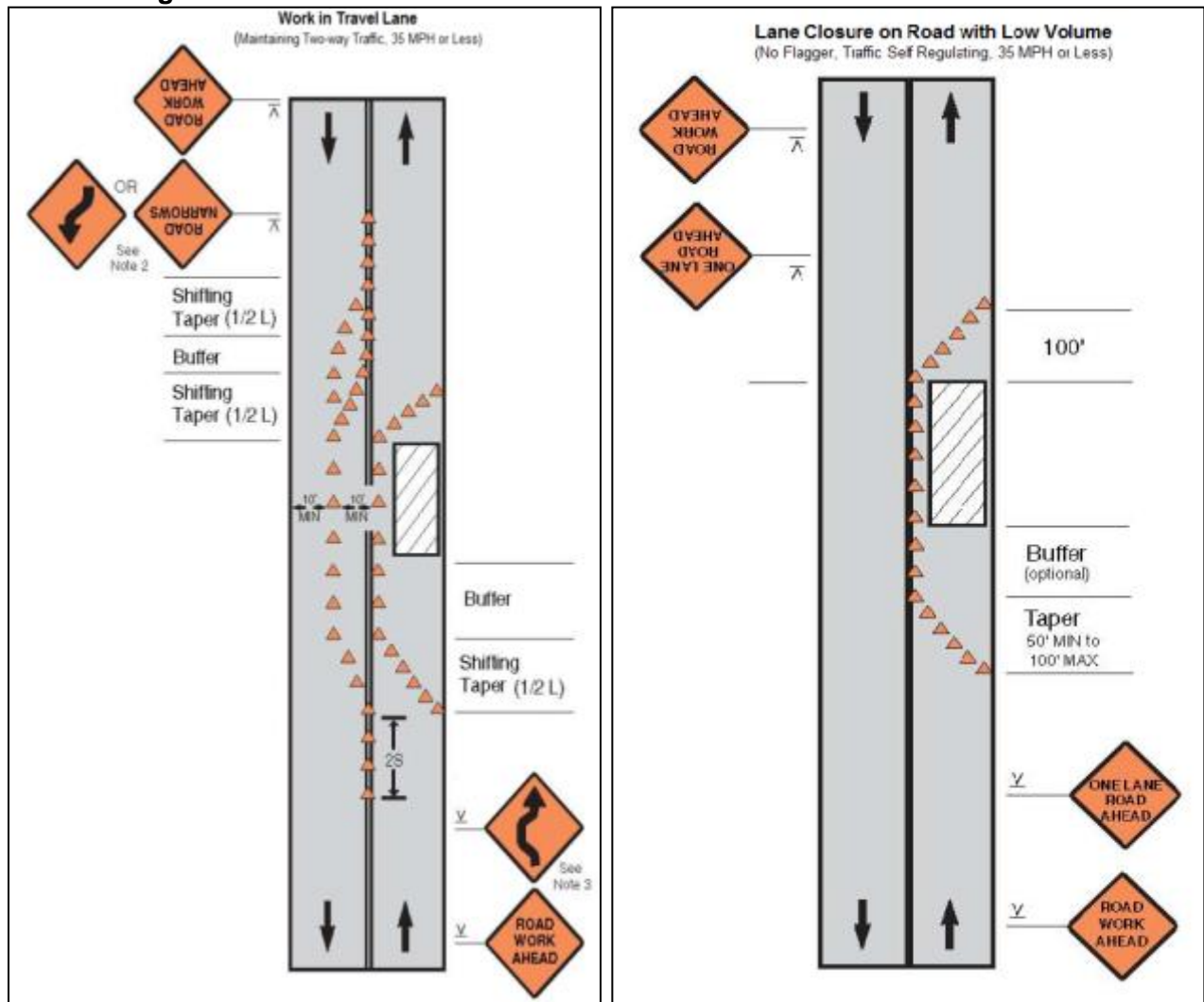


Figure A4 & A5: Work in Travel lane & Lane closure on road with low volume



**Figure A6 & A7: Lane closure on a two-line road with low volume (with yield sign)
& Lane closure on a two-line road with low volume (one flagger operation)**

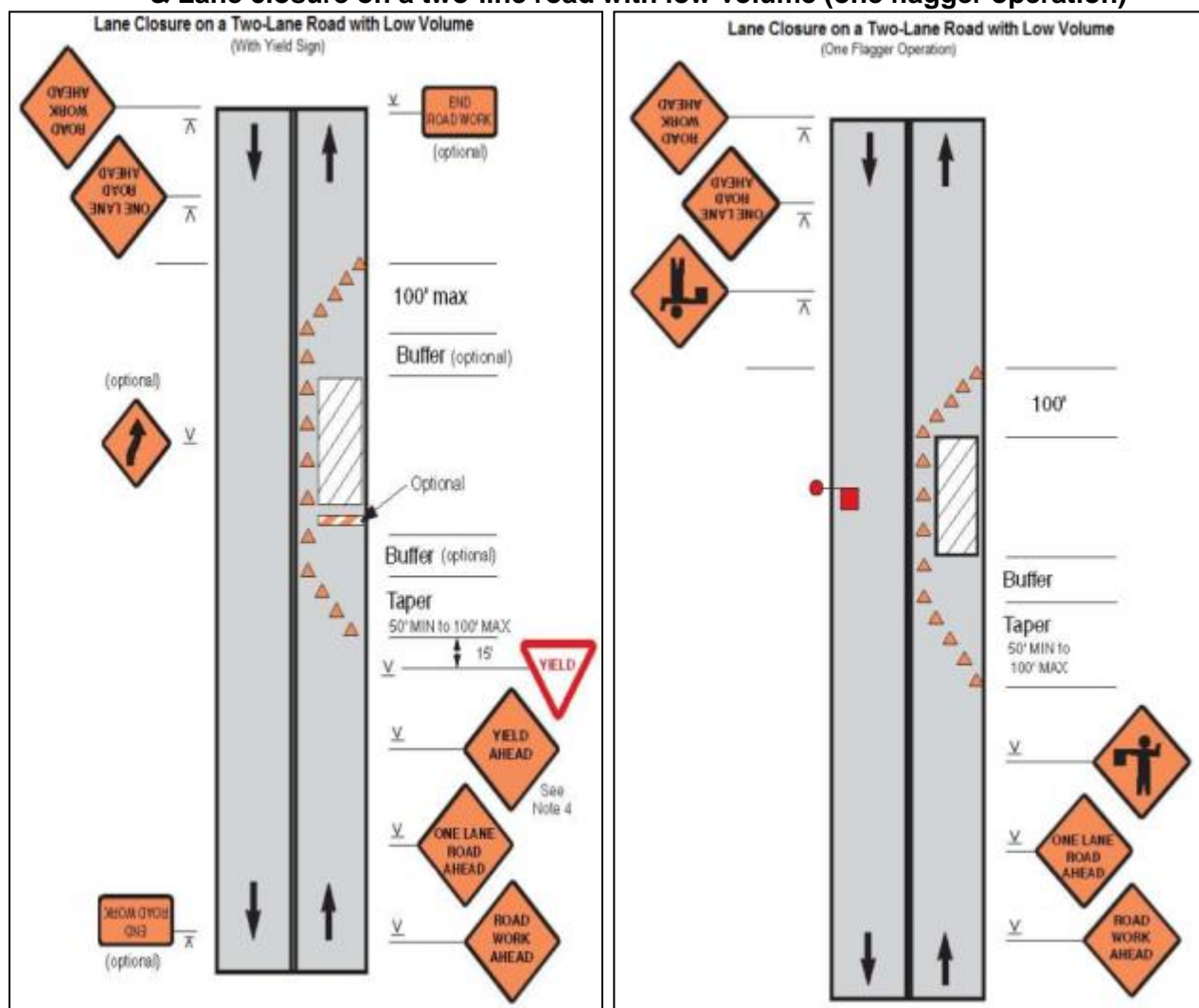


Figure A8 & A9: Lane Closure on a Two-Lane Road (Two Flagger Operation) & Lane Closure on a Four-Lane Undivided Road

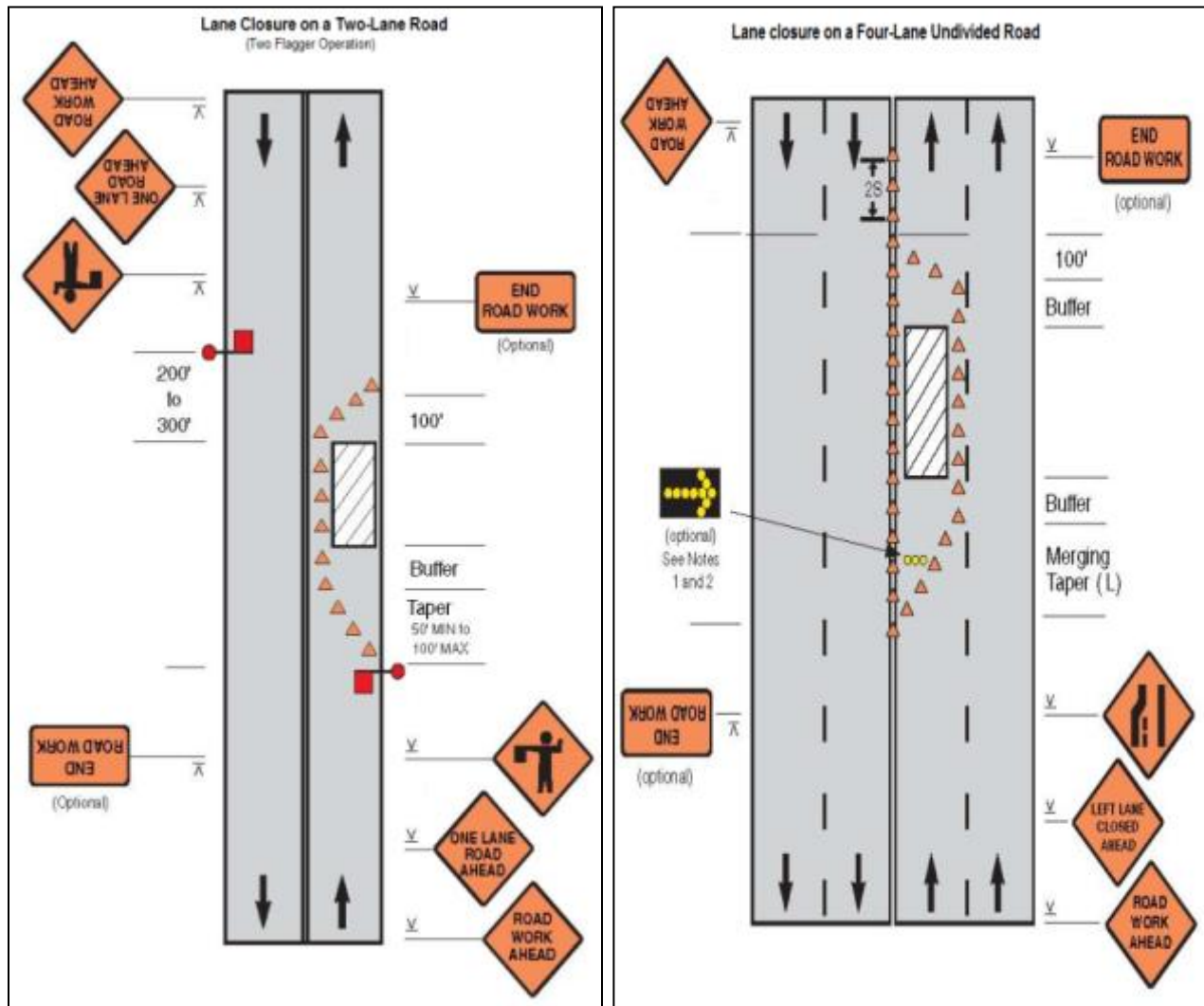
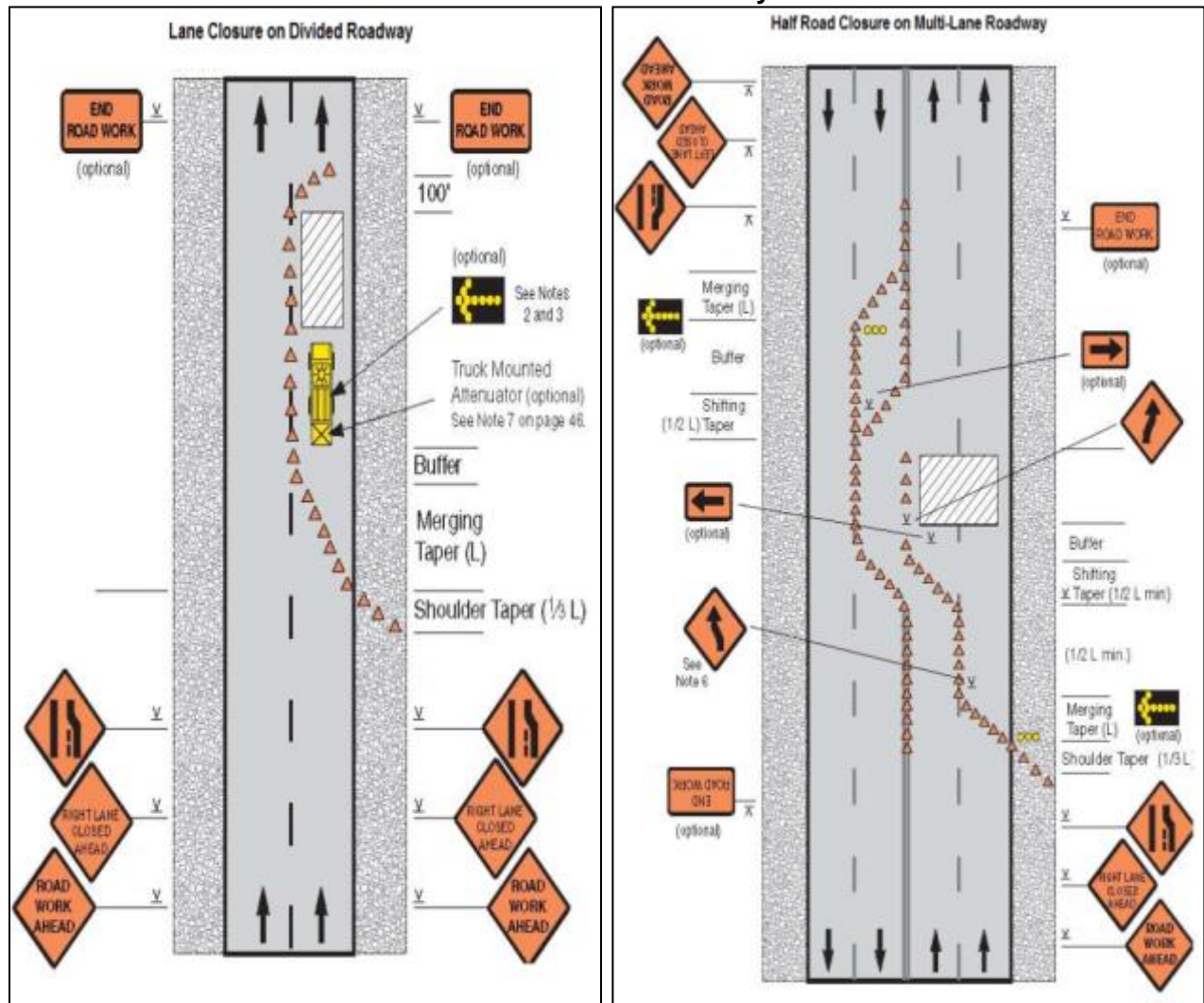


Figure A10 & A11: Lane Closure on Divided Roadway & Half Road Closure On Multi-Lane Roadway



[illegible]

APPENDIX 7: SAMPLE MONTHLY REPORTING FORMAT FOR CONSTRUCTION SUPERVISION SPECIALIST

This template must be included as an appendix in the EIA/IEE that will be prepared for the project. It can be adapted to the specific project as necessary.

I. Introduction

- Overall project description and objectives
- Description of sub-projects
- Environmental category of the sub-projects
- Details of site personnel and/or consultants responsible for environmental monitoring
- Overall project and sub-project progress and status

No.	Sub-Project Name	Status of Sub-Project				List of Works	Progress of Works
		Design	Pre-Construction	Construction	Operational Phase		
		<input type="checkbox"/>	<input type="checkbox"/>	<input type="checkbox"/>	<input type="checkbox"/>		
		<input type="checkbox"/>	<input type="checkbox"/>	<input type="checkbox"/>	<input type="checkbox"/>		
		<input type="checkbox"/>	<input type="checkbox"/>	<input type="checkbox"/>	<input type="checkbox"/>		

II. Compliance status with National/ State/ Local statutory environmental requirements

No.	Sub-Project Name	Statutory Environmental Requirements	Status of Compliance	Action Required

III. Compliance status with environmental loan covenants

No. (List schedule and paragraph number of Loan Agreement)	Covenant	Status of Compliance	Action Required

IV. Compliance status with the environmental management and monitoring plan

- Provide the monitoring results as per the parameters outlined in the EMP. Append supporting documents where applicable, including Environmental Site Inspection Reports.
- There should be reporting on the following items which can be incorporated in the checklist of routine Environmental Site Inspection Report followed with a summary in the semi-annual report send to ADB. Visual assessment and review of relevant site documentation during routine site inspection needs to note and record the following:
 - What are the dust suppression techniques followed for site and if any dust was noted to escape the site boundaries;
 - If muddy water was escaping site boundaries or muddy tracks were seen on adjacent roads;
 - adequacy of type of erosion and sediment control measures installed on site, condition of erosion and sediment control measures including if these were intact following heavy rain;
 - Are their designated areas for concrete works, and refuelling;

- Are their spill kits on site and if there are site procedure for handling emergencies;
- Is there any chemical stored on site and what is the storage condition?
- Is there any dewatering activities if yes, where is the water being discharged;
- How are the stockpiles being managed;
- How is solid and liquid waste being handled on site;
- Review of the complaint management system;
- Checking if there are any activities being under taken out of working hours and how that is being managed.

V. Summary Monitoring Table

Impacts (List from IEE)	Mitigation Measures (List from IEE)	Parameters Monitored (As a minimum those identified in the IEE should be monitored)	Method of Monitoring	Location of Monitoring	Date of Monitoring Conducted	Name of Person Who Conducted the Monitoring
Design Phase						
Pre-Construction Phase						
Construction Phase						
Operational Phase						

VI. Overall Compliance with CEMP/ EMP

No.	Sub-Project Name	EMP/ CEMP Part of Contract Documents (Y/N)	CEMP/ EMP Being Implemented (Y/N)	Status of Implementation (Excellent/ Satisfactory/ Partially Satisfactory/ Below Satisfactory)	Action Proposed and Additional Measures Required

VII. Approach and methodology for environmental monitoring of the project

- Brief description on the approach and methodology used for environmental monitoring of each sub-project

VIII. Monitoring of environmental IMPACTS on PROJECT SURROUNDINGS (ambient air, water quality and noise levels)

- Brief discussion on the basis for monitoring
- Indicate type and location of environmental parameters to be monitored
- Indicate the method of monitoring and equipment to be used
- Provide monitoring results and an analysis of results in relation to baseline data and statutory requirements

As a minimum the results should be presented as per the tables below.

Air Quality Results

Site No.	Date of Testing	Site Location	Parameters (Government Standards)		
			PM10 µg/m3	SO2 µg/m3	NO2 µg/m3

Site No.	Date of Testing	Site Location	Parameters (Monitoring Results)		
			PM10 µg/m3	SO2 µg/m3	NO2 µg/m3

Water Quality Results

Site No.	Date of Sampling	Site Location	Parameters (Government Standards)					
			pH	Conductivity µS/cm	BOD mg/L	TSS mg/L	TN mg/L	TP mg/L

Site No.	Date of Sampling	Site Location	Parameters (Monitoring Results)					
			pH	Conductivity μS/cm	BOD mg/L	TSS mg/L	TN mg/L	TP mg/L

Noise Quality Results

Site No.	Date of Testing	Site Location	LAeq (dBA) (Government Standard)	
			Day Time	Night Time

Site No.	Date of Testing	Site Location	LAeq (dBA) (Monitoring Results)	
			Day Time	Night Time

IX. Summary of key issues and remedial actions

- Summary of follow up time-bound actions to be taken within a set timeframe.

X. Appendixes

- Photos
- Summary of consultations
- Copies of environmental clearances and permits
- Sample of environmental site inspection report
- Other

SAMPLE ENVIRONMENTAL SITE INSPECTION REPORT

Project Name _____
Contract Number _____

NAME: _____
TITLE: _____
LOCATION: _____

DATE: _____
DMA: _____
GROUP: _____

WEATHER CONDITION: _____

INITIAL SITE CONDITION: _____

CONCLUDING SITE CONDITION:

Satisfactory _____ Unsatisfactory _____ Incident _____ Resolved _____ Unresolved _____

INCIDENT:

Nature of incident: _____

Intervention Steps: _____

Incident Issues

Resolution

Project Activity Stage	Survey	
	Design	
	Implementation	
	Pre-Commissioning	
	Guarantee Period	

Inspection

Emissions	Waste Minimization
Air Quality	Reuse and Recycling
Noise pollution	Dust and Litter Control
Hazardous Substances	Trees and Vegetation
Site Restored to Original Condition	Yes

Signature _____

Sign off

Name
Position

Name
Position

SAMPLE CHECKLIST FOR CONSTRUCTION SAFETY

Sl. No.	Safety Issues	Yes	No	Non-Compliance	Corrective Action	Penalty	Remarks
1	Appointment of qualified construction safety officers						
2	Approval for construction safety management plan by the SC						
3	Approval for traffic management/control plan in accordance with IRC: SP: 55-2001						
4	Maintenance of the existing road stretches handed over to the contractor.						
5	Provision of temporary traffic barriers/barricades/caution tapes in construction zones						
6	Provision of traffic signboards						
7	Provision for flags and warning lights						
9	Providing plastic crash barrier						
10	Provision of adequate staging, form work, and access (ladders with handrail) for works at a height of more than 3 m						
11	Provision of adequate shoring/bracing/barricading/lighting for all deep excavations of more than 3 m depth.						
12	Demarcations (fencing, guarding, and watching) at construction sites						
13	Provision for sufficient lighting, especially for nighttime work						
14	Arrangements for controlled access and entry to construction zones						
15	Safety arrangements for road users/pedestrians						
16	Arrangements for detouring traffic to alternate facilities						
17	Regular inspection of work zone traffic control devices by authorized contractor personnel						
18	Construction workers' safety - Provision of personnel protective equipment						
19	A. Helmets						
	B. Safety shoes						
	C. Dust masks						
	D. Hand gloves						

Sl. No.	Safety Issues	Yes	No	Non-Compliance	Corrective Action	Penalty	Remarks
	E. Safety belts						
	F. Reflective jackets						
	G. Earplugs for labor						
20	Workers employed on bituminous works, stone crushers, concrete batching plants, etc. provided with protective goggles, gloves, gumboots, etc.						
21	Workers engaged in welding work shall be provided with welder protective shields						
22	All vehicles are provided with reverse horns.						
23	All scaffolds, ladders, and other safety devices shall be maintained in safe and sound condition.						
24	Regular health checkup for labor/ contractor's personnel						
25	Ensuring sanitary conditions and all waste disposal procedures and methods in the camps.						
26	The contractor shall provide adequate circuit for traffic flow around construction areas, control speed of construction vehicles through road safety and training of drivers, provide adequate signage, barriers, and flag persons for traffic control						
27	Provision of insurance coverage for the contractor's personnel						

Contractor: _____

Consultant: _____