



# Resettlement Planning Document

---

Project Number: 40648-034  
March 2016

## IND: Infrastructure Development Investment Program for Tourism - Tranche 3

Sub Project : Eco-Tourism development of Wildlife Zoo, village Chhat, Mohali District (Package no. PB/IDIPT/T3/05/04)

Submitted by

Program Management Unit, Punjab Heritage and Tourism Board, Chandigarh

This resettlement due diligence report has been prepared by the Program Management Unit, Punjab Heritage and Tourism Board, Chandigarh for the Asian Development Bank and is made publicly available in accordance with ADB's public communications policy (2011). It does not necessarily reflect the views of ADB.

This resettlement due diligence report is a document of the borrower. The views expressed herein do not necessarily represent those of ADB's Board of Directors, Management, or staff, and may be preliminary in nature. In preparing any country program or strategy, financing any project, or by making any designation of or reference to a particular territory or geographic area in this document, the Asian Development Bank does not intend to make any judgments as to the legal or other status of any territory or area.

**Asian Development Bank**

**Punjab Heritage and Tourism Promotion Board**  
**Infrastructure Development Investment Programme for Tourism**  
(ADB Assisted Project)



The Country Director,  
South Asia Department  
India Resident Mission  
4, San Martin Marg, Chanakyapuri  
New Delhi 110021, India

No. PHTPB / IDIPT 120/6/7032-36

Date: 23/2/2016

**Subject: Submission of Due Diligence Report (DDR) of Eco-Tourism Development of Wildlife Zoo**  
(Package No.: PB/IDIPT/T3/05/04)" for Loan 3223-IND

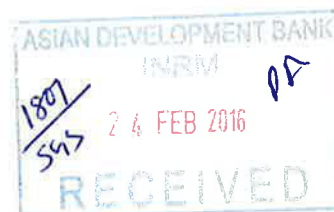
Kindly find Social Safeguards Due Diligence Report (DDR) of contract package Eco-Tourism Development of Wildlife Zoo (Package No.: PB/IDIPT/T3/05/04)" enclosed with this letter for your approval.

*Lia*  
*22.2.16*  
Additional Project Director

CC:

1. PA to PD, IDIPT-PB
2. CGM, PHTPB
3. TL, PMC, IDIPT-PB
4. TL DSC, IDIPT-PB

DDR for ECO-TOURISM DEVELOPMENT OF WILDLIFE ZOO (PACKAGE NO.: PB/IDIPT/T3/05/04)"



*Recd top copy on 24.02.16. PA*

## Due Diligence Report on Social Safeguards



### INFRASTRUCTURE DEVELOPMENT INVESTMENT PROGRAM FOR TOURISM (TRANCHE 3) STATE OF PUNJAB

#### ECO-TOURISM DEVELOPMENT OF WILDLIFE ZOO, VILLAGE CHHAT, MOHALI DISTRICT (PACKAGE NO.: PB/IDIPT/T3/05/04)



DECEMBER 2015

Prepared by  
The Government of Punjab for the Asian Development Bank

## CONTENTS

<b>1.</b>	<b>INTRODUCTION.....</b>	<b>4</b>
<b>2.</b>	<b>DESCRIPTION OF SUB-PROJECT.....</b>	<b>4</b>
	2.1.1 Resettlement Framework (RF).....	6
	2.1.2 Initial Environmental Examination Report (IEE) .....	6
<b>3.</b>	<b>OBJECTIVE OF DUE DILIGENCE REPORT .....</b>	<b>6</b>
<b>4.</b>	<b>REQUIREMENT OF DUE DILIGENCE REPORT.....</b>	<b>6</b>
<b>5.</b>	<b>SCOPE OF DUE-DILIGENCE EXERCISE.....</b>	<b>6</b>
<b>6.</b>	<b>APPROACH AND METHODOLOGY .....</b>	<b>7</b>
	6.1 ACTIVITY 1: REVIEW AND APPRAISAL OF SUB-PROJECT REPORTS AND DOCUMENTS .....	7
	6.2 ACTIVITY 2: CONSULTATIONS WITH THE PIU & CONTRACTOR.....	7
	6.3 ACTIVITY 3: SITE VISIT AND ON-SITE OBSERVATIONS .....	8
<b>7.</b>	<b>SOCIAL SAFEGUARD DUE DILIGENCE .....</b>	<b>8</b>
	7.1 ASSESSMENT / REVIEW OF SOCIAL ISSUES .....	8
	7.2 DETAILS OF LAND .....	8
	7.3 RESETTLEMENT IMPACTS .....	9
	7.4 IMPACT ON SCHEDULED TRIBE / INDIGENOUS POPULATION.....	9
	7.5 GENDER ISSUES .....	9
	7.6 WAGES AND LABOUR REGISTER.....	9
	7.7 LABOUR CAMP SITE .....	10
	7.8 PUBLIC CONSULTATION.....	10
	7.8.1 Public Consultation conducted during Project/IEE Preparation .....	10
	7.8.2 Public Consultation conducted during DDR Preparation .....	10
	7.9 PROJECT ORGANIZATION STRUCTURE .....	11
	7.10 GRIEVANCE REDRESSAL MECHANISM .....	13
	7.11 EMPLOYMENT POTENTIAL .....	14
	7.12 OTHER SOCIAL ISSUES .....	14
	7.12.1 HIV/AIDS Awareness.....	14
	7.12.2 Child Labour.....	15
	7.13 OCCUPATIONAL HEALTH & SAFETY .....	15
	7.14 DISCLOSURE PROCESS FOLLOWED FOR SAFEGUARD AND OTHER RELATED DOCUMENTS.....	16
	7.15 SOCIAL SAFEGUARDS IMPACT CATEGORIZATION.....	16
	7.16 COMPLIANCE TO SOCIAL IMPACTS MITIGATION DURING PROJECT PLANNING, DESIGN AND IMPLEMENTATION STAGES .....	16
<b>8.</b>	<b>SUMMARY FINDINGS/ RECOMMENDATION .....</b>	<b>17</b>
	<b>LIST OF FIGURES</b>	
	Figure 1: Project Location of Chhatbir Zoo .....	5
	Figure 2: Women Labours working in Construction .....	9
	Figure 3: Public Consultation during DDR Preparation .....	11
	<b>LIST OF TABLES</b>	
	Table 1: Stakeholder Consultation during Project Preparation.....	10
	Table 2: Project Implementation Organizations – Roles and Responsibilities .....	12
	Table 3: Project Social Safeguards Impact Categorization.....	16
	Table 4: Compliance to Social Impacts Mitigation .....	16

## **LIST OF APPENDIX**

APPENDIX 1: NOC & UNDERTAKING

APPENDIX 2: PROJECT MANAGEMENT STRUCTURE (AS PROPOSED IN PAM)

APPENDIX 3: GRIEVANCE REDRESSAL MECHANISMS (AS PROPOSED IN RF/IEE)

APPENDIX 4: CONTRACT PAGE OF AGREEMENT FOR OH&S

APPENDIX 5: INVOLUNTARY RESETTLEMENT IMPACT CATEGORIZATION FORM

APPENDIX 6: INDIGENOUS PEOPLE CATEGORIZATION FORM

## ABBREVIATIONS

ADB	---	Asian Development Bank
AF	---	Affected Family
AP	---	Affected Person
BPL	---	Below Poverty Line
CDO	---	Community Development Officer
COI	---	Corridor of Impact
CPRs	---	Community Property Resources
DF	---	Displaced Family
DP	---	Displaced Person
DSC	---	Design Supervision Consultant
EA	---	Executing Agency
FGD	---	Focused Group Discussion
GoI	---	Government of India
GoP	---	Government of Punjab
HH	---	Household
KII	---	Key Informant Interview
MP	---	Micro Plan
NGO	---	Non-Government Organization
PH	---	Physical Handicapped
PHTPB	---	Punjab Heritage and Tourism Development Board
PIU	---	Project Implementation Unit
PMU	---	Project Management Unit
PMU	---	Project Management Unit
R&R	---	Resettlement and Rehabilitation
ROW	---	Right of Way
RP	---	Resettlement Plan
SC	---	Schedule Caste
SDU	---	Social Development Unit
ST	---	Schedule Tribe
ToR	---	Terms of Reference



# SOCIAL SAFEGUARD DUE DILIGENCE

## 1. INTRODUCTION

1. The Government of India has signed a loan with the Asian Development Bank (ADB) on 28-September-2015 for US \$ 123.51 million for Tranche 3 of the Infrastructure Development Investment Program for Tourism (IDIPT) with an objective to continue upgrading tourism infrastructure and services in three states, Punjab, Uttarakhand and Himachal Pradesh. The loan is intended for development and conservation of places of tourist attractions as well as to improve basic tourism facilities, and to build the capacity of sector agencies and local communities in the three States. The third Tranche loan is part of the \$250 million multi-Tranche financing facility that ADB approved in 2010.
2. LEA Associates South Asia Private Limited, (LASA) in association with Simpson & Brown Architects (UK) and Addyman Archeology, UK (UK) has been retained as Project Management Consultant for Punjab Heritage and Tourism Promotion Board, Punjab, Project Management Unit (PMU) and the Project Implementation Units (PIUs) with an objective to ensure effective coordination and implementation of IDIPT. The department of Tourism, Government of Punjab is the Executing Agency (EA) and Punjab Heritage and Tourism Promotion Board (PHTPB) is the implementation agency (IA) for the IDIPT for Punjab and the PMU has been set up at the PHTPB.
3. Shah Technical Consultants Private Limited in association with Grassroots Research and Consultancy (India) has also been engaged as Design Supervision Consultant (DSC) for Punjab Heritage and Tourism Promotion Board, Punjab.
4. This report presents the due diligence on Social Safeguards for one of the sub-projects of IDIPT, entitled, “*ECO-TOURISM DEVELOPMENT OF WILDLIFE ZOO (PACKAGE NO.: PB/IDIPT/T3/05/04)*” taken up under Tranche-3.

## 2. DESCRIPTION OF SUB-PROJECT

5. The subproject is part of Eastern Circuit. The project aims to protect and manage natural and cultural tourist assets along with enhanced participation by communities and private sector in tourism development at a tourist site in Chhatbir, Mohali. Mohali district is part of the Sikh Heritage Trail (Source: As per Punjab Tourism Development Master Plan, 2008-2023; United Nations World Tourism Organization (UNWTO)).
6. Development and Expansion of Visitors Amenities at Chhatbir zoo: Chhatbir Zoo is located near Zirakpur in Mohali District at a distance of 17 km from Chandigarh city. It is the only zoological educational park located near Chandigarh. The reserve forest which was located earlier is transformed into a Zoological Park on 13th April, 1977 by Mr. Mahindra Mohan Chaudhary, who was the Governor of Punjab at that time and the Zoological Park was named after him as M C Zoological Park, however, it is commonly referred as Chhatbir Zoo.
7. The villages surrounding project site are Baltana, Dhakoli, Lohgarh, Bhabat, Himmatgarh (Dhakola), Bishangarh, Bishanpur, Pir Muchhaila, Gazhipur and Kishanpura. The open country side all around zoo provides opportunity to the naturalists to take a close look at nature and natural resources in original form. The Zoological Park houses about 11000 animals belonging to about 96 species with animals and some birds of rare species. The zoo is most ideal place for picnic spots due to location of water body and large wooded parks including forest area. About six lakh tourists visit the Chhatbir Zoo every year, with

increasing footfall during winter season. The zoo being a big attraction for tourists is significant site for nature and wildlife conservation awareness creation.

8. The proposed sub-project location is shown in Figure 1.

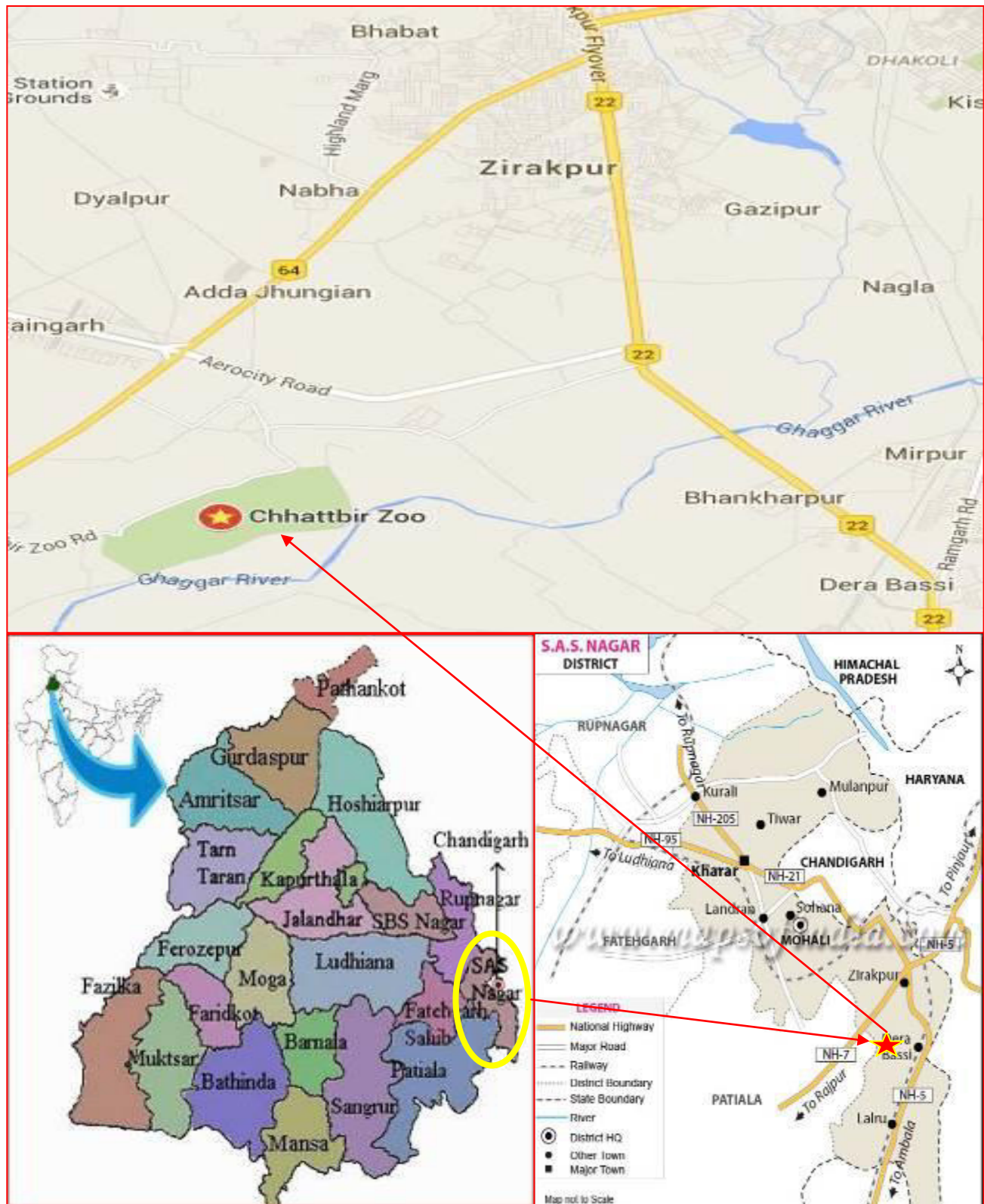


Figure 1: Project Location of Chhattbir Zoo



### **2.1.1 Resettlement Framework (RF)**

9. A Resettlement Framework is in place for guidance in preparation of resettlement plans and overall safeguards management under IDIPT. The RF prepared for IDIPT Tranche 1, has been modified to include the development with respect to new land acquisition Act, and for implementation of Tranche 3 sub-projects. The RF reflects the national and state level acts and policies with respect to land acquisition, involuntary resettlement, as well as ADB's safeguards policy statement (SPS, 2009). This RF is applicable to all sub-projects under IDIPT and is subjected to review and updating ensuring relevance and consistency with applicable country/state legal framework and ADBs SPS, 2009. The following web link may be referred for Resettlement Framework Document. <http://www.adb.org/sites/default/files/project-document/148689/40648-034-rf-02.pdf>

### **2.1.2 Initial Environmental Examination Report (IEE)**

10. An Initial Environmental Examination (IEE) Report is in place for the sub-projects under IDIPT, which classifies the proposed interventions, the subprojects as Environmental Category B as per the SPS, 2009 as no significant impacts are envisioned. Accordingly this IEE has been prepared to assess initial environmental/social impacts, if any and to provide mitigation and monitoring measures to ensure no significant impacts arises as a result of the sub-project. The following web link may be referred for IEE Report. [http://www.punjabtourism.gov.in/UploadedFiles/ADB%20Safegaurds/40648-034-iee-05\\_Eco%20tourism\\_wildlife%20zoo.pdf](http://www.punjabtourism.gov.in/UploadedFiles/ADB%20Safegaurds/40648-034-iee-05_Eco%20tourism_wildlife%20zoo.pdf)

## **3. OBJECTIVE OF DUE DILIGENCE REPORT**

11. The main objectives of preparation of DDRs are to:

- Determine whether the subproject is free of Involuntary Resettlement impact such as land acquisition, displacement, adverse impact on income and livelihood, community properties or any other impacts.
- Review the existing field circumstances of this subproject in accordance with ADB's Safeguard Policy Statement (SPS) 2009.

## **4. REQUIREMENT OF DUE DILIGENCE REPORT**

12. The development and expansion of Visitors Amenities at Chhatbir zoo does not involve the temporary or permanent land acquisition and resettlement impact because proposed activities are being implemented within the Chhatbir Zoo. Therefore, no expected impacts on private land, structures etc. no negative impacts on livelihood are envisaged. Hence no Resettlement Plan is needed and Due Diligence Report will fulfil the requirement of ADB's Safeguards Policy.

## **5. SCOPE OF DUE-DILIGENCE EXERCISE**

13. The scope of Due Diligence Exercise covers the following activities while preparing the DDR:

- Review the system and procedures for project management, implementation and monitoring of the progress;
- Review measures taken to minimise land acquisition and other social impacts;
- Monitor the process if government land transfer involved, the process followed for making such land available to the project and the land-use of those government lands and description of any encumbrances;

- Gather the documentation regarding agreement reached with or consultation held to reach agreement, in case of purchase of land directly from the community / panchayat;
- Gather details of affected properties including private, government, community, religious etc;
- Verify R&R provisions made applicable to the project;
- Gather details of total affected land holders and details of any Scheduled Tribe (ST) families and non-titleholders affected, if any;
- Details of public consultation during planning and construction stage and how the outcome of consultations was integrated into the project design;
- Details of entitlement matrix or compensation and assistance details formulated for the Project Affected Families (PAFs) for loss of assets which should also include compensation criteria adopted for affected structured due to project facilities. Details of additional assistance provided to the affected ST families;
- Gather details of non-titleholders and R&R assistance provided, if any, to respective categories;
- Details of compensation paid for crop and other damages for the affected landholders, if applicable.
- Details of grievance redress mechanism followed for the project, mentioning if any grievances received from the local people and the action taken against those grievances;
- Details of any pending litigation cases related to land acquisition and compensation, if any;
- Details of institutional arrangement for social safeguard implementation;
- Details of the Community consultation or development Activities, if carried out by the contractor;
- Compliance with respect to Resettlement Framework (RF);
- Disclosure process followed for safeguard and other related documents;
- Gather any other information and data related to social impacts;
- Suggest suitable measures for identified gaps and shortcomings in mitigating the social impacts, if any, based on the due diligence exercise.

## 6. APPROACH AND METHODOLOGY

14. As part of the due diligence, the team visited the project area and carried out detailed interactions with implementing agency, contractors, and carried out consultation with communities. A review of the project DPR, design, drawings was also carried out. The Due Diligence Report has been prepared based on the scope of work of the consultancy service, and Safeguard Policy Statement of the Asian Development Bank, and the Resettlement Framework (RF) agreed for the IDIPT. The methods followed for the preparation of Due Diligence Report has been discussed in this section.

### 6.1 Activity 1: Review and Appraisal of Sub-Project Reports and Documents

15. The reports and relevant documents related to social safeguards available with the PMU have been reviewed and appraised. The documents included Loan Agreement- ADB and Punjab state government, Project Agreement-ADB and Punjab state government; sub-project appraisal report (SAR), Initial Environmental Examination (IEE) Report, Resettlement Framework, NOC's and Certificate and Undertaking issued from the line agency department of Chattbir Zoo and Contract Documents etc.

### 6.2 Activity 2: Consultations With the PIU & Contractor

16. Two-stage consultation process has been conducted towards preparation of the Due Diligence Report, (i) consultation with PIU officials prior to the site visit to appraise about the project, and (ii) consultation after the site visit to ascertain the compliance procedures adopted or planning to be adopted by the PIU/Contractor for various safeguard issues observed at the site.

### **6.3 Activity 3: Site Visit and On-Site Observations**

17. Visit to the sub-project site have been an integral part of the preparation of Due Diligence Report. PMC Social Safeguards Specialist has visited the project site on 6th November 2015 and had discussions with the Forest Specialist, Community Development officer at PIU Ropar, Site Engineer, Contractor's representatives, labourers, etc.

## **7. SOCIAL SAFEGUARD DUE DILIGENCE**

### **7.1 Assessment / review of Social Issues**

18. The Tranche-3 sub-project is categorized as "C" for Involuntary Resettlement (IR) as well as Indigenous People Development as per ADB's Safeguard Policy Statement (SPS-2009). Formally the Reserve Forest was transformed into a Zoological Park on 13th April, 1977 by Mr. Mahindra Mohan Chaudhary, who was the Governor of Punjab at that time and the Zoological Park was named after him as M.C. Zoological Park, however, it is commonly referred as Chhatbir Zoo.

19. The existing infrastructure in the Zoological Park requires improvement to cater the growing tourist demand. In view of this, Punjab Heritage & Tourism Promotion Board (PHTPB) and the Forest Department, Punjab has taken an initiative to improve / develop the infrastructure requirements as a subproject (Development and expansion of visitors amenities at Chhatbir Zoo including landscaping, Interpretation centre, Zoo Education Park, shelters, rest areas, circulation network and services)

20. The subproject components are creating state of art interpretation centre, creation of thematic zoo entrance including landscaping around the lake near the entrance, upgradation of primary and secondary loops, construction of multi - facility plaza including parking area, fencing at parking and restaurant outside the zoo gate, strengthening of zoo waste disposal system including relaying of the sewer network of the zoo, creation of public spaces at three strategic locations inside zoo and converting children park as zoo education park. The civil works of sitting platforms, interpretation centre, reception centre etc are in progress.

21. The proposed sub-project will not have any land acquisition and resettlement impacts and the proposed improvements will take place within government owned land (wildlife). The zoo authorities and tourists have a positive perception about the project components development with respect to the public amenities.

### **7.2 Details of Land**

22. The zoo spreads over an area of 202 ha. and is located on the banks of the river Ghaggar with Shiwalik hills in the background. The zoo houses about 11000 animals belonging to about 96 species. More than six lakh tourists visit the MC Zoological Park every year. It is a big attraction for tourists especially for nature and wildlife conservation awareness creation.

23. The sub-project improvements have been undertaken within the zoo owned land. No Objection Certificates (NOC) and undertakings for civil work execution and not any social impact have been obtained from Zoo Authorities / Field Director, Zoo. Copies of all NOC & undertakings are placed as Appendix-1.

24. The construction work has been started, for which the Contract was formally signed on June 30<sup>th</sup> 2015 and contract completion date is 18<sup>th</sup> February 2017 (18 months from start date). Notice to Proceed (NTP) was issued on 6<sup>th</sup> August 2015 and discussion with the contractor revealed that the civil works on ground started in the month of August 2015.

### 7.3 Resettlement Impacts

25. There will not be any resettlement impact due to the sub-project. Encroachment of any form, squatting or any informal use of land or asset of the Zoo is not observed.
26. **Details of affected properties:** There will not be any impact on built-up structure of other properties.
27. **Impact on Trees:** No trees have been affected due to this sub-project.
28. **No title holder** is being affected or will be affected due to the project.

### 7.4 Impact on Scheduled Tribe / Indigenous Population

29. There will be no impact on Indigenous Peoples (IPs). All the proposed construction activities will be done within the Zoo land including parking facilities. This sub-project is categorized as “C” for Indigenous Peoples. Sahibzada Ajit Singh Nagar (Mohali) district as such is not part of the notified Fifth Schedule Area<sup>1</sup>. Further, as mentioned in the Indigenous Peoples Planning Framework of ADB (July 2010) Scheduled Tribes are in all States and Union Territories except in the States/Union Territories of Haryana, Punjab, Delhi, Pondicherry, and Chandigarh.

### 7.5 Gender Issues

30. The proposed project does not have any adverse impact on women. The project certainly has some benefits for local women (figure 2) in terms of employment opportunities during construction phase. In Tranche-3 sub-project has the scope for promoting gender equality in form of employment in construction work. PMC Social Safeguards Specialist has had a discussion with the women workers engaged in construction works. Resettlement framework suggested carrying out continuous consultation with women community in surrounding villages throughout project implementation to create awareness among the upcoming development activities and their livelihood opportunities that are likely to come up. This is with the objective to ensure participation in income generating and livelihood enhancing entities. Public Consultation meetings are being conducted at site by ESS and CDO, PIU Ropar.



Figure 2: Women Labours working in Construction

31. Presently 15 local women labourers are engaged in civil work at this site; this number will increase as and when necessary, as informed by the site-supervisor during PMC DDR visit.

### 7.6 Wages and Labour Register

32. The site in charge has been informed to maintain the labour register with disaggregated data of male/female workers at site. Contractor has been informed to pay equal wages for equal works and minimum wages as per the notification of Labour Commissioner are to be paid to both men and women labourers. There are no women involved in skilled work at this site.

<sup>1</sup> Fifth Schedule under Article 244(1) of Constitution defines “Scheduled Areas” as such areas as the President may by order declare to be Scheduled Areas after consultation with the Governor of that State. The criteria for declaring any area as a “Scheduled Area” under the Fifth Schedule are; (a) preponderance of tribal population, (b) compactness and reasonable size of the area, (c) a viable administrative entity such as a district, block or Taluka, and (d) economic backwardness of the area as compared to the neighbouring areas.

## 7.7 Labour camp site

33. The due diligence related consultation has revealed that the labour working at site is from Bihar, Uttar Pradesh and Madhya Pradesh but they are residing in their rented houses in ‘Chhat’ village or nearby areas and not staying at construction site. Hence, no labour camp has been established. Though the contractor has been advised to provide clean, safe and better working atmosphere to the labourers as per labour law of Punjab Govt. Safety of labourers needs to be significantly improved with Personal Protection Equipment (PPE). IEE suggests that this is the responsibility of contractor to fulfil the labour laws and other applicable rules.

## 7.8 Public Consultation

### 7.8.1 Public Consultation conducted during Project/IEE Preparation

34. During project preparation, consultations have been held with the Forest Department, Mohali Municipal Corporation, PWD department, NGOs and tourists on issues pertaining to the implementation of the proposed sub-projects. The key issues were highlighted during the discussion viz. managing the tourists during the project construction, selection of tourist facilities and its maintenance, design options for thematic Zoological Park entrance etc. During consultation the discussion over the master plan prepared for the Chhatbir Zoological Park were also discussed. These consultations provided valuable inputs to hasten the decision making process. The outcome of the consultation is given in the Table 1.

**Table 1: Stakeholder Consultation during Project Preparation**

Sl. No.	Date of Site Visit	Place	Participants	Issues Discussed
1	March 2014	Mohali	Officials of forest, department	Proposed components in the Master Plan prepared for Chhatbir zoo. Implementation of the proposed components under the Tranche-2 and its issues and management strategies.
2	March 2014	Mohali	Officials of forest, department	Discussion on the construction materials that are to be used at the site and its alternatives to reduce impacts. Obtaining NoC, Proposed design elements, Tree felling permission from the Forest Department
3	December 2013	Chandigarh	Officials of P.W.D Department	NOC/ clearance requirements, environment and social policies of ADB.
4	December 2013	Chandigarh	Officials of Department Tourism (DoT)	Role of Environmental and Social safeguard and the necessity of IEE in the project implementation and methodology adopted

Source: IEE Report, October 2014

### 7.8.2 Public Consultation conducted during DDR Preparation

35. There is no physical or economic, temporary or permanent, IR impact. No person or community is being adversely affected by this sub-project. No land or asset acquisition is necessitated in this sub-project. So people and communities will not be physically or economically displaced due to the sub-project interventions. No common property resource (CPR) will be affected. Poor, indigenous and other ethnic groups are not being adversely impacted. A few public consultations were conducted by the PMC/DSC team during project preparation and IEE report preparation with an objective to assess the possible impacts of the project.

36. During the preparation of Due Diligence Report, the necessary discussion has been conducted with the labourers, PIU official and civil contractor by social safeguards specialist, PMC on 23rd December 2015. During consultation with contractors, it's revealed that the labourers are being paid equally for equal work and minimum wages. Some selected photographs presented below.



**Figure 3: Public Consultation during DDR Preparation**



**Discussion with Site Engineer of Contractor**



**Meeting with Field Director, Zoo**



**Meeting with Range Officer Zoo Chhatbir**



**Consultation with Women Labourers**



**Discussion with Supervisor**

## 7.9 Project Organization Structure

37. The implementing agency PHTPB had already established two PIUs, one for each circuit (Eastern and Western) at Rupnagar (Ropar) and Amritsar respectively for the implementation and monitoring of subprojects. It comprises the personnel drawn from relevant line departments and outsourced, and each headed by a project manager and supported by Community Development Officer (CDO) for effective implementation of the RF and ensures the safeguard compliance provisions of the investment program. The PIUs are mainly responsible for:

- i. Prioritizing and preparing subproject proposals;
- ii. Providing day-to-day assistance, supervision and guidance to the design and supervision consultants (DSC);
- iii. Conducting detailed assessments and surveys including public consultation and input from stakeholders;
- iv. Preparing detailed designs, specifications, schedule of quantity, bidding documents, and related documentation;
- v. Implementing civil works and related activities;

- vi. Reporting to PMU;
- vii. Preparing regular progress reports for the SLEC, the executing agency and ADB through PMU;
- viii. Supervising construction, conducting quality control, approving progress payments to contractors; and
- ix. Maintaining records and accounts on an up-to-date basis and making these available to ADB, its missions, or auditors for inspection.

38. In present organizational setup two PIUs at Amritsar and Ropar PIUs are headed by Project Manager (PM) and assisted by Community Development Specialist (CDO) for smooth functioning and monitoring of safeguards activities. PM PIU is overall responsible for safeguards implementation and reporting monthly to PMU. Environment Safeguards Specialist, PMU further reporting to GoP and ADB as per agreed reporting schedule. Role and responsibilities are tabulated below as per approved Terms of References. Detailed project organisation structure as proposed in PAM is placed at Appendix-2

**Table 2: Project Implementation Organizations – Roles and Responsibilities**

Implementation Organization	Management Roles and Responsibilities
<b>Environment Safeguards Specialist (ESS), PMU</b>	<p>ESS is discharging the following duties:</p> <ul style="list-style-type: none"> <li>• Review of IEE documents and contract clauses and ensure adequacy under ADB's EA guideline 2003 and the updated safeguard policy statement, 2009;</li> <li>• Ensure that the project design and specification adequately reflect the IEE</li> <li>• Monitor construction activities to ensure that appropriate control measures are effective and in compliance with the IEE and advise PIU for compliance with statutory requirement.</li> <li>• Develop training program for the PMU/PIU staff, the contractors and other involved in the project implementation, in collaboration with the Environmental Specialist of the PMC and DSC</li> <li>• Review and approve contractors implementation plan</li> <li>• Liaise with the Contractors and consultants on the implementation of environmental measures proposed in IEE</li> <li>• Liaise with various government departments</li> <li>• Review the environmental performance of the project</li> <li>• Provide support and assistance to the government agencies and the ADB to supervise the implementation of IEE</li> <li>• Document the good practices in the project</li> <li>• Assist in preparation of SARs for T2 subprojects including IEE</li> <li>• Monitor all design result frameworks of IDIPT project</li> <li>• Establish dialogue with the affected community</li> <li>• Provide support to PMU and design team in preparation of implementation of ADB resettlement plan if any</li> <li>• Overseeing the implementation of resettlement plans</li> <li>• Helping in issues related to health and overall welfare and development of the labour settlement involved in the project</li> </ul>
<b>Community Development Officer (CDO), PIU</b>	<p>Support PMU and the design team in</p> <ul style="list-style-type: none"> <li>• Prepare ToRs and lead/ coordinate community mobilisation and related product development actions</li> <li>• Lead workshops and community consultations</li> <li>• Define sub projects elements and the costs</li> <li>• Coordinate base line study requirements with the DSC team;</li> <li>• Preparation and implementation of ADB compliant resettlement plans if any based on the approved framework; and</li> <li>• Preparation of performance monitoring reports</li> </ul> <p>Apart from the above duties the following tasks are defined for the CDO</p> <p><b>Responsibilities towards SIA</b></p> <ul style="list-style-type: none"> <li>• Preparation of Rural Tourism circuit (route) plan and assess impact on the rural community in terms of physical, socio-economical, life-style, etc aspects</li> <li>• Awareness program for the key stakeholders including local community on importance of the wetland and need for it conversation and community based</li> </ul>

Implementation Organization	Management Roles and Responsibilities
	<p>rural tourism potential in general</p> <ul style="list-style-type: none"> <li>• Monitor social impacts and undertake safeguards measures as necessary during implementation of IDIPT projects</li> </ul> <p>Responsibilities towards Capacity Building Activities:-</p> <ul style="list-style-type: none"> <li>• Training of local youth as nature guides and promote involvement in tourism development</li> <li>• Formation of SHGs for traditional activities, such as handicraft and local cuisine</li> <li>• Training of local communities for encourage home-stay based on standard guidelines</li> <li>• Conduct regular meeting with village level communities</li> <li>• Formation of village level tourism committees</li> <li>• Organising local events and festivals and promote community involvement</li> </ul> <p>Responsibilities towards Capacity Building Activities:-</p> <ul style="list-style-type: none"> <li>• Ensure women's participation in all consultative processes</li> <li>• Ensure equal job opportunities for female workers in the villages</li> <li>• Systematic incorporation of the women's need in the preparation of all programmes</li> <li>• Providing the women workers with good health, safety, welfare, sanitation and working condition</li> </ul> <p><b>Specific project tasks:</b></p> <ul style="list-style-type: none"> <li>• To conduct participatory rural appraisal involving all the villages under Ropar Rural Tourism Project to identify basic needs of the village</li> <li>• Formation of T-2 subproject involving local community participation</li> <li>• Help in conducting the community-based activities, festivals and events in Eastern Circuit, such as Heritage walk, Holla Mohalla, Quila Raipur</li> <li>• Promotion of homestay and farm tourism in Eastern Circuit</li> <li>• Identify training needs based on specific programs and organise training programmes</li> </ul>
<b>Social Safeguards Specialist (SSS), DSC</b>	<p>Support PMU and the design team in</p> <ul style="list-style-type: none"> <li>• Lead all baseline surveys required for preparation resettlement plans;</li> <li>• Preparation and implementation of ADB compliant resettlement plans if any based on the approved framework;</li> <li>• Lead community consultation during design phase</li> </ul>
<b>Community Development Specialist (CDS), DSC</b>	<ul style="list-style-type: none"> <li>• Lead value chain analysis and lead community mobilization activities;</li> <li>• Lead workshops and community consultations;</li> <li>• Coordinate all activities of this component;</li> <li>• Supervise all activities under this component;</li> <li>• Implementation of ADB compliant resettlement plans if any based on the approved framework;</li> <li>• Oversee implementation of Resettlement Plans, if any;</li> <li>• Preparation of performance monitoring reports</li> </ul>
<b>Social Safeguards Specialist (SSS), PMC</b>	<p>Support PMU and the design team in</p> <ul style="list-style-type: none"> <li>• Coordinate base line requirements with the DSC team;</li> <li>• Preparation and implementation of ADB compliant resettlement plans if any based on the approved framework;</li> <li>• Oversee implementation of Resettlement Plans; and</li> <li>• Preparation of performance monitoring reports</li> </ul>

## 7.10 Grievance Redressal Mechanism

39. It would be pertinent here to refer the Asian Development Bank's Policy, which requires proper mechanisms for resolution of disputes that may arise from any aspect of the project and development process. The mechanisms should be "affordable and accessible," and third parties independent of the implementers should be available at the appropriate point in the process. The grievance procedure need to be



simple, administered in the first instance at the local project level to facilitate access, flexibility and open to various proofs taking into account the need for speedy, just and fair resolution of any grievances.

40. During preparation of social due diligence exercise, the RF and IEE report have been reviewed and noted that it has proposed effective and interactive mechanism in which participation of the community is ensured through dialogues and frequent meetings with town/village heads, action plan for GRC formation is being implemented.

41. Team Leader, PMC has been intimated regarding this, by the social safeguard specialist of PMC. Team Leader then has communicated the same to PMU regarding formation and functioning of GRC. Email communication made by TL, PMC to PMU on grievance redress mechanism (as proposed in RF document) and necessary instructions from Additional Project Director to both the PIUs for taken early action have been issued. Accordingly Project Manager PIU Ropar have been requested to Deputy Commissioner and Municipal Corporation for nomination of member and necessary approval of GRC. The GRC structure proposed in RF documents and communications made from TL, PMC to PMU and onwards letter issued by PM Ropar to Deputy Commissionaire and Municipal Corporation are placed in Appendix-3. PM PIU advised that the similar requests shall be made to SAS Nagar (Mohali) for the formation of GRC.

42. No grievance has been reported till the due diligence visit for the project.

## 7.11 Employment Potential

43. The proposed sub-project 'Eco-Tourism Development of Wildlife Zoo (package NO.: PB/IDIPT/T3/05/04)' will create direct and indirect employment opportunities. During discussion, contractor has informed that on an average 20-25 labour including skilled and unskilled will be required daily at least for next 12 months thereby creating around 8000 man-days. Apart from direct employment for construction works, other types of employment obtain for suppliers of construction materials, operators tractor/dumper, etc., during construction phase. During operation phase, indirect employment creation is envisaged for local shopkeepers, rural artisans etc.

## 7.12 Other Social Issues

44. This subproject is very much sensitive with respect to safety of daily visitors along with regular workers and guards of Zoo. Some significant issues noticed during the due diligence visit:

- Safety provisions need to be implemented at the sites inside the Zoo where work is in progress.
- Labourers should wear proper PPEs.
- Barricading around the construction sites and deep excavations should be done.
- Construction material should be managed properly.
- First Aid Facility should be maintained.

### 7.12.1 HIV/AIDS Awareness

45. Considering the possible presence of migrant labourers in the project area for construction work, EA/IA take proper care during construction to conduct information and education campaigns on the risks of HIV/AIDS and other health issues, targeting construction workers at campsites time to time. The civil works contractors require (i) disseminating information at worksites on risks of sexually transmitted diseases and (ii) HIV/AIDS awareness as part of health and safety measures for those employed during construction.

### 7.12.2 Child Labour

46. It has to be ensured by EA/IA that the civil contractors are not employing or using children for labour. Due diligence exercise does not find any child labour during the site visit.

### 7.13 Occupational Health & Safety

47. PIU with the help of DSC need to be monitor the implementation of the Occupation Health and Safety (OHS). The same have been included in the contract document of civil contract. Accordingly, the contractor is ensuring the safety of all workers, materials, plant and equipment's belonging to him or to others working at the site is ensured through effective and practicable safety management systems. However, labourers working at the sub-projects are not wearing the safety vest, shoes etc. while working at construction site. The provision of OHS proposed in IEE report are presented in the box below:

48. During the discussion held with contractor's representative, he assured to provide the facilities as per law. The OH&S part of contract from contractor's agreement need to be followed is placed as Appendix-3, from the contract agreement of the contractor and summarised here in below box. The implementation of the following should be closely monitored.

*The Contractor shall, in accordance with the safety and health provisions specified in the EMP, provide workers with a safe and healthy working environment, in the work areas, through application of preventive and protective measures consistent with international good practice, as reflected in internationally recognized standards such as the ADB's Environment, Health and Safety Guidelines. The borrower/client will take steps to prevent accidents, injury, and disease arising from, associated with, or occurring during the course of work by-*

- *Providing preventive and protective measures, including modification, substitution, or elimination of hazardous conditions or substances;*
- *Providing appropriate equipment to minimize risks and requiring and enforcing its use;*
- *Training workers and providing them with appropriate incentives to use and comply with health and safety procedures and protective equipment;*
- *Documenting and reporting occupational accidents, diseases, and incidents; and*
- *Having emergency prevention, preparedness, and response arrangements in place.*
- *Provide first aid facilities in all the work sites and workers camp and having qualified first aider to give first aid at the time of any accident.*
- *Contractor should provide safe drinking water, clean eating and resting areas and sufficient amenities at work site and workers camps.*
- *Contractor should have prepared emergency response plan with full details and methods of emergency response during any accident and shall have and display the emergency contract numbers at site.*
- *Contractor should follow all the applicable rules and regulations for workers safety*
- *Workers complaint registers must be available at site.*
- *Housekeeping conditions can be improved.*
- *Sign boards and contact numbers should be displayed at visible locations.*
- *All the emergency numbers should be displayed in Hindi script at the construction site.*
- *All safety rules at work and provision of adequate health and safety measures such as water, food, sanitation, and personal protective equipment, workers insurance and medical facilities should be made available.*
- *Accident and Grievances Register should be maintained at the construction sites.*
- *Dust bin should be made available for collecting the garbage at the construction sites.*
- *Provision of crèche can be done wherever found necessary.*



## 7.14 Disclosure Process Followed for Safeguard and Other Related Documents

49. As per RF, public consultation meetings need to be undertaken throughout the implementation stage. All the five principles of information dissemination, information solicitation, integration, coordination and engagement into dialogue need to be incorporated. IEE Report suggests disclosure of safeguards documents at prominent places for public information. Disclosure of IEE has been done by the line agency department after finalization of the IEE document.

## 7.15 Social Safeguards Impact Categorization

50. Based on the above assessment the Tranche-3 sub-projects including this were categorized as “C” for Involuntary Resettlement (IR) as well as Indigenous People Development as per ADB’s Safeguard Policy Statement (SPS-2009). Table no. 2, below presents the social safeguards impact categorisation and the detailed screening forms for resettlement categorization and indigenous people are placed at Appendix 5 and 6.

**Table 3: Project Social Safeguards Impact Categorization**

Name of Project	IDIPT, Punjab Loan No. <b>No. 3223– IND</b>		
Type of contract	Regular	Design Build	Combined
<b>Safeguards Categorization</b>	<b>A</b>	<b>B</b>	<b>C</b>
IR (Involuntary Resettlement Impact Categorization)	N.A.	N.A.	C
IP (Indigenous people Categorization)	N.A.	N.A.	C

## 7.16 Compliance to Social Impacts Mitigation during Project Planning, Design and Implementation Stages

**Table 4: Compliance to Social Impacts Mitigation**

Sl. No.	Social Safeguard Issues	Findings	Remarks
1.	Resettlement Impacts	<ul style="list-style-type: none"> <li>The selected site is land of Department of Forest and Wildlife Preservation, Mohali Punjab. Livelihood pattern of the any person/villagers is not affected due to the project.</li> </ul>	The project categorized as “C” for Involuntary Resettlement (IR) as well as Indigenous People Development as per ADB’s Safeguard Policy Statement (SPS-2009).
2.	Census and socio-economic survey	<ul style="list-style-type: none"> <li>As no impact noticed, hence not carried out.</li> </ul>	
3.	Land acquisition	<ul style="list-style-type: none"> <li>The proposed land is government land and NOC/undertaking obtained from concerned department.</li> </ul>	No LA required
4.	Entitlements	<ul style="list-style-type: none"> <li>ADB’s policy of IR shall be applicable, if any impact seen.</li> </ul>	
5.	Public consultation and disclosure	<ul style="list-style-type: none"> <li>Public consultation has been carried during the project preparation stage</li> </ul>	
6.	Impact on tribal people	<ul style="list-style-type: none"> <li>Impact on tribal people is not envisaged as part of the project. Mohali district as such are not part of the notified Fifth Schedule Area.</li> </ul>	-
7.	Resettlement sites	<ul style="list-style-type: none"> <li>Not applicable</li> </ul>	
8.	Socio-economic rehabilitation measures	<ul style="list-style-type: none"> <li>Not applicable</li> </ul>	
9.	Implementation	<ul style="list-style-type: none"> <li>Social safeguard implementation is part of</li> </ul>	

Sl. No.	Social Safeguard Issues	Findings	Remarks
	arrangement	the contract of IDIPT. PMU along with the PIU personnel is the core group responsible for social safeguard implementation at the project site. PMU and PIU is assisting in overall implementation of social safeguards.	
10.	Grievance Redressal Mechanism	<ul style="list-style-type: none"> <li>Grievance Redress Mechanism (GRM) action plan has been made.</li> </ul>	TL, PMC has written an email regarding formation and functioning of GRC as suggested in RF/IEE document.

## 8. SUMMARY FINDINGS/ RECOMMENDATION

51. In this Sub-Project intervention, full or partial, permanent or temporary, physical and economic displacements are absent. There will not be any adverse impact on people, livelihood, land or structure and common property resources are observed.

52. This sub-project has been categorized as “C” for Involuntary Resettlement (IR) impact as well as Indigenous People Development (IP) as per the ADB’s Safeguard Policy Statement, 2009 (SPS). Screening questions form for IR & IP categorization is placed as Appendix-5 and Appendix-6.

53. It is concluded from this due diligence study that: the proposed infrastructure improvements will not change substantially the present land use; there will be no issues of land acquisition and resettlement related to this sub-project. All facilities will be built on vacant government land. Due to project intervention, there will be no loss of income of any person or any assets, either privately owned or publicly owned.

54. The key observations of the due diligence on the social impacts are summarised as follows:

- The site is located on government land which is in possession of Department of Forest and Wildlife Preservation, Mohali, Punjab. The necessary recommendation and permissions such as No Objection Certificates (NOC) and Undertaking for not involvement of any private land or structure have been obtained. The project site is fenced and no encroachment observed during due diligence site visit.
- PHTPB has carried out IEE of the project and had conducted public consultation during project preparation. The communities are aware of the project and have positively participated in the project activities;
- Safeguard implementation should follow the principles and methods suggested in the RF.
- Grievance redress committee should be made functional and information regarding the same should be disseminated, in order to create awareness among public and other stakeholders to lodge any grievances.
- Labour Register at construction site should be properly maintained, with details of wages given to both men and women, PPE provided to respective labourers, etc.
- Awareness on HIV/AIDS and other health issues should be provided.
- Information and safety signage need to be provided.
- Occupational health and safety measures should be implemented satisfactorily.

55. The due diligence study concludes that the project does not involve any outstanding social safeguards issues. At the same time, PMU/PIU may urge the CSC / Contractors to address the issues

identified during the due diligence exercise. CSC/Contractor should prepare an action taken report for inclusion in periodic monitoring reports.

**UNDERTAKING FROM PUNJAB ZOOS DEVELOPMENT SOCIETY STATING  
AUTHORISATION TO RECEIVE FUNDS FOR ZOO DEVELOPMENT**


**Under taking**

It is hereby informed that the Punjab Zoos Development Society has been notified and registered on 14<sup>th</sup> February 2013 under relevant rules. This Society is authorized to receive contribution and funds from various agencies (specified in Article 5 (c) of Memorandum & Articles of Association) and can utilize these contributions in the larger interest of M.C.Zoological Park Chhatbir for maintenance & upkeep of Zoo animals, improve the premises as well as maintenance and improvement of visitors amenities,(specified in Article 5 (d) of Memorandum & Articles of Association).

Counter Signed



Chief Wildlife Warden,  
Punjab, Ajitgarh.



Field Director,  
M.C.Zoological Park,  
ChhatBir, Punjab.

**UNDERTAKINGS FROM ZOO AUTHORITIES REGARDING NOT TAKING ANY FUND FOR  
PROPOSED COMPONENT BY ANY OTHER DEPARTMENT/AGENCY**


Under taking

It is certified that the proposed component/project has not been executed under any other funding nor it is under planning with any other Department.

Counter Signed



Chief Wildlife Warden,  
Punjab, Aajitgarh.



Field Director,  
M.C. Zoological Park,  
Chhat Bir, Punjab.



**RECOMMENDATION LETTERS AND NO OBJECTION CERTIFICATES AND  
UNDERTAKINGS FROM CHIEF WILDLIFE WARDEN**

Government of Punjab  
Department of Forests and Wildlife Preservation  
O/o Chief Wildlife Warden, Punjab,  
Forest Complex, 2nd Floor, 2 No. Tower,  
Sector - 68, Ajitgarh (Mohall)  
Phone: 0172-2298010, 2298000 (Ext. 2201)  
Fax: 0172-2298036.

No. PAJED/1420  
Date: 27/5/2013

No: 1142

To  
The Project Director,  
IDIPT, Chandigarh.

Dated: 24/5/13.

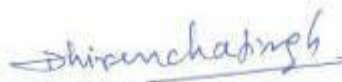
Subject **Project on Development and Expansion of visitor's amenities at Chhatbir Zoo through IDIPT for Punjab to be taken up in Tranche-2 ADB Project.**

\*\*\*\*\*

A copy of above cited Project is submitted for your consideration. Total Project Cost is ₹9.99 crores. This Project was prepared by Field Director, M.C. Zoological Park, Chhatbir and thoroughly discussed at District Level Committee. The Project was further scrutinized on 10.5.2013 at joint meeting between Forest Department and IDIPT. It is further submitted that:

1. This department strongly recommends this Project.
2. This department has no objection if the Project is taken up with the assistance of ADB.
3. The department will take operational and maintenance responsibility of assets created through this Project.
4. It is certified that no resettlement of people is involve in implementation of this Project.

Encl. As above.

  
Chief Wildlife Warden,  
Punjab, Ajitgarh.

Endst. No. \_\_\_\_\_ Dated: \_\_\_\_\_

A copy is sent to the Field Director, M.C. Zoological Park, Chhatbir w.r.t. his letter No. 181-82 dated 15.4.2013 for information and further necessary action.

  
Chief Wildlife Warden,  
Punjab, Ajitgarh.

**DATE: MAY 23, 2013**

**NO OBJECTION CERTIFICATE & UNDERTAKINGS**

I do hereby certify that the Department of Forests and Wildlife Preservation, Punjab has no objection in recommending the proposed project to be taken under IDIPT-PB, PHTPB for execution and development as per the guidelines laid by GoI and ADB for loan funded projects for the State of Punjab.

I hereby certify that;

- ☐ The Proposed Project Area/ Building/ Land (M.C. Zoological Park, Chhatbir Zoo, Punjab) is under the ownership of Punjab Forest Department and presently under the possession of Department of Forests and Wildlife Preservation.
- ☐ The Proposed Project Area/ Building/ Land is free from all encumbrances (Legal/Circumstantial).
- ☐ There is no Resettlement/ Displacement/ Rehabilitation of people involved in the above Proposed Project Area/ Building/ Land
- ☐ The Proposed Project Area/ Building/ Land is not Partially/ Fully part of any other project funded under State Govt/GoI/External funding schemes.
- ☐ This department will take operation and maintenance of the assets created as a result of the development/execution of the proposed project under the IDIPT.




**Head of the department  
(Name of the department)**

**UNDERTAKING FROM FIELD ZOO DIRECTOR FOR NO ENCROACHMENT IN THE ZOO  
AREA**

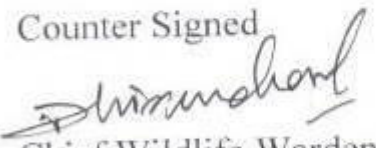
**Under taking**

It is certified that the project Area is free from any  
encroachment & can be demarcated.



Field Director,  
M.C.Zoological Park,  
ChhatBir, Punjab.

Counter Signed




Chief Wildlife Warden,  
Punjab, Ajitgarh.

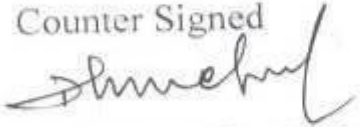
**UNDERTAKING FROM FIELD ZOO DIRECTOR FOR OPERATION AND MAINTENANCE OF  
CREATED ASSETS**

**Under taking**

“It is here by informed that the zoo management will ensure the  
operation & maintenance of assets created under the aforesaid project.”

  
Field Director,  
M.C. Zoological Park,  
ChhatBir, Punjab.

Counter Signed

  
Chief Wildlife Warden,  
Punjab, Ajitgarh.

## APPENDIX 2: PROJECT ORGANIZATION STRUCTURE (AS PROPOSED IN PAM)

The Project management flow chart showing the reporting lines and key organizations involved in implementation is shown in Figures 1.

### Project Implementation Organizations – Roles and Responsibilities

Implementation Organization	Management Roles and Responsibilities
<b>Executing agency</b>	<b>Government of Punjab through Department of Tourism (DOT)</b>
	<ul style="list-style-type: none"> <li>✓ Assume overall responsibility for the execution of the MFF and reporting;</li> <li>✓ Engage adequate permanent or fixed-term staff to implement the MFF;</li> <li>✓ Setup a state-level project management unit and project implementation units;</li> <li>✓ Provide overall strategic guidance on technical supervision and project execution; and</li> <li>✓ Ensure overall compliance with the loan covenants.</li> </ul>
<b>Implementing agency</b>	<b>Punjab Heritage and Tourism Promotion Board (PHTPB)</b>
	<ul style="list-style-type: none"> <li>✓ Project planning and budgeting;</li> <li>✓ Day-to-day assistance, supervision and guidance for the project implementation units and their consultants;</li> <li>✓ Review subprojects for due diligence requirements and approve subproject proposals;</li> <li>✓ Bidding, evaluation and contract award;</li> <li>✓ Managing and disbursing funds;</li> <li>✓ Review compliance with loan covenants, contract specifications, work plans and quality control;</li> <li>✓ Consolidate and submit progress reports, finance and accounting / audit reports, and matters requiring higher-level decision to state level empowered committee (SLEC) and ADB</li> </ul>
<b>ADB</b>	<ul style="list-style-type: none"> <li>✓ Loan processing activities and signing of loan agreement;</li> <li>✓ Recruitment of implementation capacity development consultant;</li> <li>✓ Procurement supervision;</li> <li>✓ Disbursement;</li> <li>✓ Project administration reviews and missions;</li> <li>✓ Reviewing compliance with loan covenants;</li> <li>✓ Change in project scope or implementation arrangements; and</li> <li>✓ Reallocation of loan proceeds.</li> </ul>
<b>State-Level Empowered Committee (SLEC)</b>	<ul style="list-style-type: none"> <li>✓ act as a policy making body;</li> <li>✓ Provide overall advice and guidance to the state's EA and PMU; and</li> <li>✓ Accord all approvals under the MFF.</li> </ul>

#### State Level Project Empowered Committee.

State-Level Empowered Committee (SLEC) have been established in Punjab, chaired by Chief Secretary, Govt. of Punjab with Principal Secretary/Secretary of the Department of Tourism as member secretary and comprised of secretaries from relevant line departments as indicated in the Facility Administration Manual (FAM). The SLEC have been empowered to take all decisions on behalf of the State and will (i) act as a policy making body, (ii) provide overall advice and guidance to the State's executing agency and project management unit (PMU), and (iii) accord all approvals under the Project.

The members of SLEC for the Punjab are as follows: Chief Secretary (Chair); the Principal Secretary / Secretary of the Department of Tourism; the Principal Secretary / Secretary of Finance; Finance



Commissioner, Department of Forests and Wildlife Preservation; Principal Secretary / Secretary, Public Works Department; Principal Secretary / Secretary, Department of Local Government; Secretary, Department of Rural Development and Panchayat; Principal Secretary / Secretary, Irrigation; Director, Department of Cultural Affairs, Archives, Archaeology and Museum; Representative, Archaeological Survey of India; Principal Secretary / Secretary, Department of Fisheries; Director, Department of Tourism; and Principal Secretary/Secretary, Department of Housing and Urban Development.

### **Executing Agencies:**

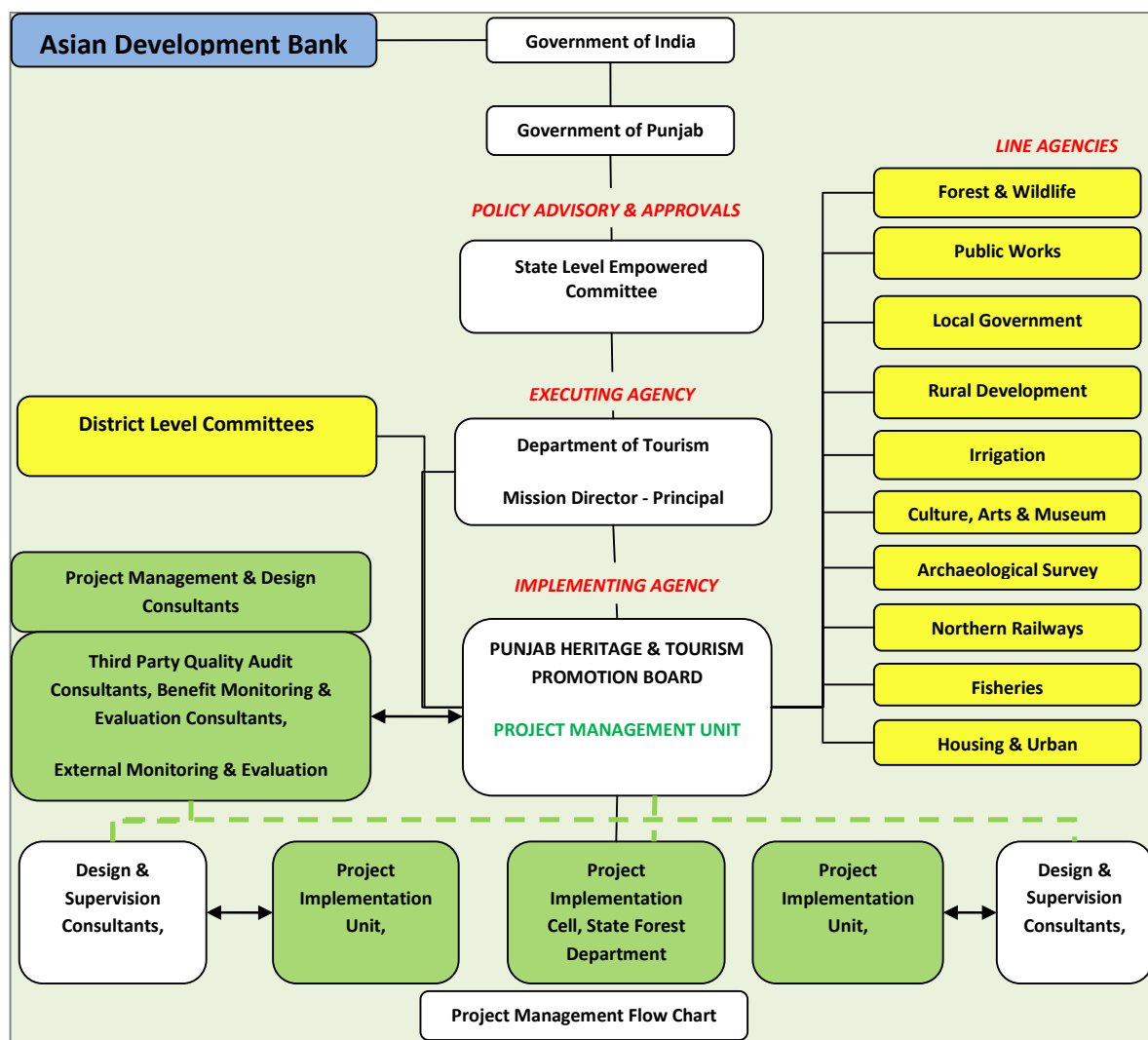
The Department of Tourism (DOT), Government of Punjab is the executing agencies of the Punjab. All necessary powers to: (i) assume overall responsibility for the execution of the Tranche; (ii) engage adequate permanent or fixed-term staff to implement the Tranche; (iii) setup a state-level PMU and project implementation units (PIUs); (iv) provide overall strategic guidance on technical supervision and project execution; and (v) ensure overall compliance with the loan covenants, will be delegated to the respective executing agencies. The Project Implementation flow chart showing the reporting lines and key agencies involved in implementation is given below:

The Punjab Heritage and Tourism Promotion Board (**PHTPB**) is the implementing agency in Punjab

### **Project Management Unit:**

PHTPB have a PMU, headed by a full-time Program Director (PD), and consisting of personnel drawn from relevant line departments and market. The PMU are being supported by a team of consultants including Environmental safeguard specialist. The PMU is the nodal agency for overall management of all program activities and are responsible for: (i) project planning and budgeting; (ii) providing day-to-day assistance, supervision and guidance for the project implementation units (PIUs) and their consultants; (iii) reviewing subprojects to satisfy ADB's due diligence requirements and approving subproject proposals submitted by PIUs and line departments; (iv) bidding, evaluation and contract award; (v) managing and disbursing funds; (vi) reviewing compliance with loan covenants, contract specifications, work plans and quality control; (vii) consolidating and submitting progress reports, finance and accounting/audit reports, and matters requiring higher-level decision, to the SLEC and ADB.

The State shall ensure that (i) specific divisions in the Project management units is staffed for financial management; (ii) transparent procedures are established for financial transactions; (iii) the PMUs follow government rules and procedures for all expense and revenue items including cash and for proper and accurate maintenance of financial records; and (iv) a project website remains established to provide information on Project implementation including procurement.



### Project Implementation Units:

The implementing agency had already established two PIUs, one for each circuit (Eastern and Western) at Rupnagar (Ropar) and Amritsar respectively for the implementation and monitoring of subprojects. It comprises the personnel drawn from relevant line departments and outsourced, and each headed by a project manager and supported by Community Development Officer (CDO) for effectively implementation of the RF and ensures the safeguard compliance provisions of the investment program. The PIUs are responsible for: (i) prioritizing and preparing subproject proposals; (ii) providing day-to-day assistance, supervision and guidance to the design and supervision consultants (DSC); (iii) conducting detailed assessments and surveys including public consultation and input from stakeholders; (iv) preparing detailed designs, specifications, schedule of quantity, bidding documents, and related documentation; (v) implementing civil works and related activities; (vi) reporting to PMU; (vii) preparing regular progress reports for the SLEC, the executing agency and ADB through PMU; (viii) supervising construction, conducting quality control, approving progress payments to contractors; and (ix) maintaining records and accounts on an up-to-date basis and making these available to ADB, its missions, or auditors for inspection.

### APPENDIX 3: GRIEVANCE REDRESSAL MECHANISMS

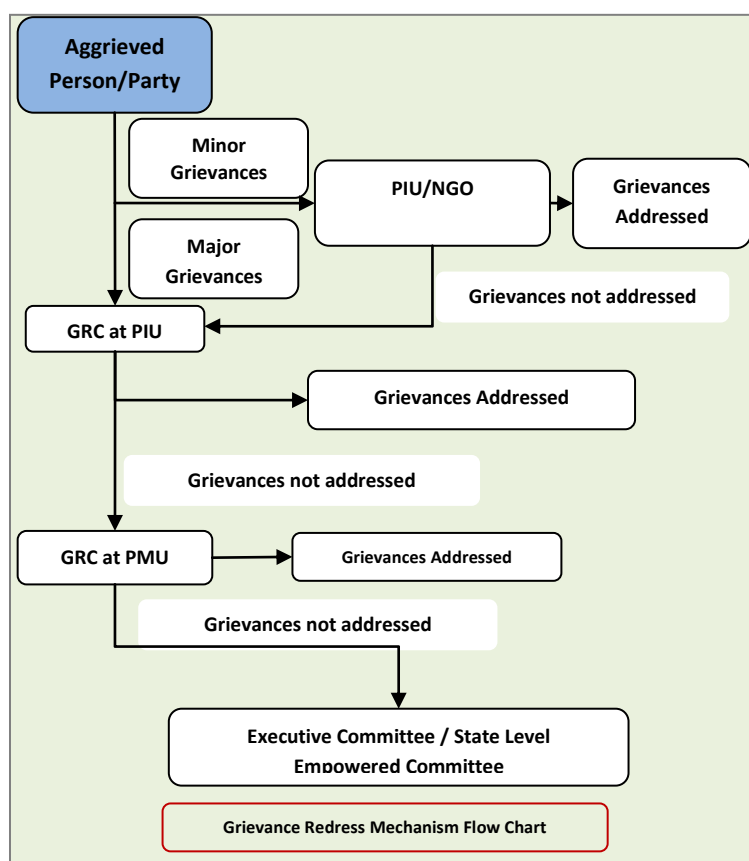
The structure suggested of Grievance Redress Committee (GRC) in RF at PIU as follows. For all the IDIPT sub projects, the affected person/aggrieved party can give their grievance verbally to Site Engineer or in written to the Project Manager of PIU. Grievances of affected person will first be brought to the attention of the site Engineer PIU, who can resolve the issue at site level. If the matter is not solved within 7 days period at site, it will be brought to the Grievance Redress Committee (GRC) constituted for the purpose in PIU. This GRC shall discuss the issue in its monthly meeting and resolve the issues within one month of time after receiving the grievance. If the matter is not resolved by GRC at PIU level within stipulated time, it shall be referred to GRC at PMU level by Project Manager PIU. If the matter is still not addressed, the same may refer to Executive Committee / State Level Empowered Committee (SLEC). The grievance redress process flow chart is shown in Figure.

In each PIU, there shall be one GRC, which will include mentioned members;

Project Manager (PIU), Chairperson

- District Tourist Officer of Department of Tourism, Govt. Of Punjab,
- Community Development Officer of PIU,
- Nominated representative of Deputy Commissioner and
- Nominated representative of Municipal Commissioner.

The committee required to meet at least once in every month. Agenda of meeting shall be circulated to all the members and affected persons/aggrieved party along with venue, date and time; informed in written at least 7 days in advance of meeting. The matters shall remain with GRC at PIU level for one month and if grievance is not resolved within this time period, at the matter shall be referred to GRC at PMU.



Grievance Redress Committee (GRC) at PMU. The matters not resolved by the GRC at PIU level within one month shall come under GRC at PMU. GRC at PMU will include:

- Additional Project Director (APD),
- Community Development Specialist, and
- Environment Safeguards Specialist of PMU.

The Committee shall be headed by APD of PMU. This committee shall look the matters, which are referred to and not resolved by GRC at PIU level.

GRC at PMU shall discuss the issue and try to resolve it and inform the PIU accordingly. If the matter is not resolved by the GRC at PMU level within one month of time, the aggrieved person/party can bring the matter to The SLEC. The PIU shall keep records of all grievances received including contact details of complainant, date of receiving the complaint, nature of grievance, agreed corrective actions and the date these were affected and final outcome.

### COMMUNICATION FOR FORMATION of GRC

12/9/2015

Gmail - Grievance Redress Mechanism and Flow Chart.



Sangram Singh <sangram1980@gmail.com>

#### Grievance Redress Mechanism and Flow Chart.

2 messages

Team Leader, PMC <tlpmc.idipt@gmail.com> Fri, Dec 4, 2015 at 5:39 PM  
To: Project Manager <idiptpiuasr@yahoo.com>, pmadmn.phtpb@gmail.com, idipt ropar <pmpir.phtpb@gmail.com>  
Cc: basanta rajkumar <brk.phtpb@gmail.com>, "Lt Col DS Grewal, Retd DSC-TL" <dscidiptpunjab@stc.co.in>, Reena Chadha <chadha.reena.phtpb@gmail.com>, K L Malhotra ji FCS <skilldevelopment.phtpb@gmail.com>, dsc ropar <ropar.dsc@gmail.com>, Sangram Singh <sangram1980@gmail.com>, "Dr. K N Jayan" <jkn@lasaindia.com>, Pushpanathan K <pushpanathan@lasaindia.com>, Himat Karia ji <cepmmc.idipt@gmail.com>, Arvind K Solanki Project Monitoring Specialist <pmspmc.idipt@gmail.com>, Kawalnain Kaur <ar.pmc.idipt@gmail.com>, puneet inder <puneet\_inder2000@yahoo.com>, Nitin Verma <seecpmc.idipt@gmail.com>

Dear Misra Sahib,

1. Please refer the Aide memoire of ADB mission dated 2-4 No. 2015 in which ADB instructed as under;

**Grievance Redress System: The Mission learnt that the Grievance Redress Committee (GRC) is not operational and the community is not aware of any such system. The Mission advised that the GRC is made operational at the earliest and the details shared with the community on priority. The numbers where people can contact in case of any grievance needs to be displayed at all sub-project sites.**

2. A discussion was held today in PHTPB office in the chairmanship of ADD in which he instructed to form GRCs and other needful activities associated as per ADB rules.
3. I am attaching a self explanatory note regarding Grievance Redress Mechanism and Flow Chart. As instructed by APD in the meeting it is advised to act upon accordingly.
4. @ Mr. Ashok nanda PM PIU is advised to follow and carry out the same mechanism for Grievance Redress system for sub projects under PIU Ropar.

With Best Regards,  
Suneet Gupta  
Team Leader,  
Project Management Consultant  
IDIPT, Punjab  
Plot 3, Sector 38A, Chandigarh-160036, India  
+91-172-4562321, +919198983666



Grievance Redressal Mechanism and Flow Chart.doc  
125K

**NECESSARY INSTRUCTIONS ISSUED FROM ADDITIONAL PROJECT DIRECTOR to PIUs**

**Punjab Heritage and Tourism Promotion Board**  
Infrastructure Development Investment Programme for Tourism (IDIPT)  
(ADB Assisted Project)  
Plot No. 03, Sector 38 A, Chandigarh, Ph. 0172-2625952, 5014495  
Email: idipt.pb.office@gmail.com



To,

Project Manager,  
PIU, IDIPT  
Amritsar

No. PHTPB/IDIPT/2015/5881-06  
Dated: 20/12/15

**Subject: Sub: Loan 2676 IND, 3223 IND: Infrastructure Development Investment Programme for Tourism – Implementation of Grievance Redress Mechanism**

As per the requirements of Asian Development Bank (ADB) all the projects under Infrastructure Development Investment Program for Tourism (IDIPT) are required to implement Grievance Redress Mechanism.

An action plan in this regard is enclosed herewith for your implementation and subsequent reporting vis-à-vis given timelines, formats for information without any further delay.

**Addl. Project Director**

CC:- CGM, PHTPB  
Project Manager (Incharge) PIU  
CDS, PMU  
CDO, PIU, Amritsar  
TL, DSC  
TL, PMC

ok

End: As above

ਅਨੁਸ਼ੰਗ - ੨

**FORMAT FOR RECORDING THE PROCEEDINGS OF  
GRIEVANCE REDRESS COMMITTEES (GRCs)**

1. Name of the complainant/s:
2. National identification number:
3. Address:
4. Date of the inquiry:
5. Time:
6. Whether complainant participated or not:
7. Grievance or issue (in summary):
8. Statement made by the complainant/s:
9. GRC recommendation:
10. Participants in the GRC:
11. Copies to:



**GRIEVANCE REDRESS MECHANISM**

For any complaint/ suggestion related to this project kindly register your complaint/ suggestion in the "Grievance Register" available in the Site office.

For further information please contact:

**GRIEVANCE REDRESS CELL**

Project Manager, Project Implementation Unit (PIU)

Address: Punjab Heritage and Tourism Promotion Board (PHTPB), Infrastructure Development Investment Program For Tourism (IDIPT), Admin Block, Surface Parking Near Gobindgarh Fort, Opp. Punjab Roadways workshop, Amritsar (Punjab)

Contact no.: Ph: \_\_\_\_\_

E mail: \_\_\_\_\_

### PROPOSED GRIEVANCE REDRESS REGISTERING AND MONITORING FORM

#### Complainant Information (Person Reporting)

1. Name:
2. Address:
3. National ID:
4. Gender: ☐ Male ☐ Female
5. Telephone:
6. Email:
7. Fax:
8. Type of complainant:
  - ☐ Affected person/s
  - ☐ Intermediary (on behalf of the AP)
  - ☐ Civil organization
  - ☐ Service organization (e.g., local government institution)
  - ☐ Others (specify)
9. Registration (assigned):

#### Complaint Details

10. Mode of receiving the grievance:
  - ☐ Letter
  - ☐ Phone call
  - ☐ Fax
  - ☐ Email
  - ☐ Verbal complaint (walk-in)
  - ☐ Suggestion box
  - ☐ Others (specify)
11. Location of the problem/issue specified in the complaint:  
District:  
Divisional secretariat:  
division:
12. Type of problem/grievance:
  - ☐ Trace

- ☐ Land acquisition
- ☐ Compensation
- ☐ Construction
- ☐ Resettlement site
- ☐ Others (specify)

13. Short description of the problem:

14. Short description of the factors causing the problem:

15. Person/agency responsible for causing the problem: ☐ Project implementing agency ☐ Affected parties ☐ Service delivery agencies ☐ Local political authority ☐ Civil organizations ☐ Funding agencies ☐ Others (specify):

16. Past action/s taken by the complainant (if any):

17. Details of the focal point that received the complaint:

Name of the person who received the complaint:

Position:

Name of the receiving office:

Date:

18. Actions taken by the Receiving Office

Action 1	Action 2	Action 3	Action 4
Short Description	Short Description	Short Description	Short Description
Name of Action Officer	Name of Action Officer	Name of Action Officer	Name of Action Officer
Office	Office	Office	Office
Date	Date	Date	Date

19. Final Resolution

Name of the person completing the form:

Signature:

Date:

**ACTION PLAN FOR GRIEVANCE REDRESS C.**  
Infrastructure Development Investment Program For Tourism (IDIPT)

**ACTION PLAN FOR ESTABLISHMENT AND OPERATION OF GRIEVANCE REDRESS CELL**  
**FOR ASIAN DEVELOPMENT BANK (ADB) ASSISTED PROJECTS UNDER**  
**INFRASTRUCTURE DEVELOPMENT INVESTMENT PROGRAM FOR TOURISM (IDIPT) FOR**  
**TRANCHE I AND TRANCHE III PROJECTS**

S. No.	Activities under GRC	To be implemented by	Last date for action	Report Action to
1.	Maintain a register at site office of each project / subproject under Tranche I and Tranche III for record of Grievances under Grievance Redress Mechanism (GRM).  A format for the same is provided in the Annexure 1.	Project Manager, PIU/ Site Engineer (responsible for safeguards) / Community Development Officer	15 <sup>th</sup> Dec. 2015	Addl. Project Director / Forest Conservation Specialist/ Environment Safeguard Specialist (ESS)
2.	Display boards should be maintained at all the project sites (in Punjabi and English) to inform all the stakeholders regarding the operation of GRIEVANCE REDRESS CELL under the subproject. The sample for the same is provided in the Annexure 2.	Project Manager, PIU/ Site Engineer (responsible for safeguards)	20 <sup>th</sup> Dec. 2015	Send photographs of the display boards to Addl. Project Director / Forest Conservation Specialist/ Environment Safeguard Specialist (ESS).
3.	A committee for GRIEVANCE REDRESS CELL should be formed both at the level of PIU, Ropar and PIU, Amritsar to be headed by Project Manager, PIUs. Members of the Committee are as following: i. Project Manager, PIU ii. District Tourist Officer, Department of Tourism (DoT) iii. Community Development Officer iv. Representative of DC v. Representative of MC	Project Manager, PIU/ Site Engineer (responsible for safeguards)	25 <sup>th</sup> Dec. 2015	Send copy of the Office Note for constitution of the Committee with signature of all the members to Addl. Project Director / Forest Conservation Specialist/ Environment Safeguard Specialist (ESS).
4.	After constituting the above committee letter should be sent to head office of both DC and MC, informing them about the	Project Manager, PIU	27 <sup>th</sup> Dec. 2015	Send copies of the letters sent and receipt of the letters to Addl.



**ACTION PLAN FOR GRIEVANCE REDRESS CELL**  
Infrastructure Development Investment Program For Tourism (IDIPT)

	constitution of the above committee and that they will be required to send a representative when a meeting will be held for GRM.			Project Director / Forest Conservation Specialist/ Environment Safeguard Specialist (ESS).
5.	A notice for monthly meeting should be sent to Chairman, MC and DC before the monthly meeting is conducted in PIU office or site office with information on time, venue and date of the meeting.	Project Manager, PIU	Every month	A copy of the notice should be sent to Addl. Project Director / Forest Conservation Specialist/ Environment Safeguard Specialist (ESS).
6.	Minutes of the monthly meeting should be recorded and signed by all the committee members, headed by Project Manager, PIU. Format for recording the proceedings of GRIEVANCE REDRESS CELL is attached as Annexure 3.	Project Manager, PIU	Every month	A copy of the MoM should be forwarded to all the members of the committee and Addl. Project Director.
7.	Printing of leaflets regarding information on GRIEVANCE REDRESS CELL, in Punjabi and English.	Environment Safeguard Specialist (ESS), PMU	Feb. 2015	2000 leaflets each will be sent to PIU Amritsar and PIU Ropar for distribution to all the stakeholders for awareness on Grievance Redress Cell.

**LETTER ISSUED TO DEPUTY COMMISSIONER FOR FORMATION OF GRC BY PIU ROPAR**

Punjab Heritage and Tourism Promotion Board  
Infrastructure Development Investment Programme for Tourism (PB)  
(ADB Assisted Project)  
Project Implementation Unit – Ropar  
# 320, Giani Zial Singh Nagar, Ropar, Ph – 1881-220345  
Email: piu.ropar@gmail.com



To

The Deputy Commissioner,  
Ropar

PA/ED/APD 2405

Dated 14-12-15



No. PIU-Ropar/Tr -3/2015/

Dated:

**Sub:- Implementation of Grievance Redress Mechanism.**

Respected Madam,

It is to inform you that as per the requirement of Asian Development Bank (ADB) All the projects under Infrastructure Development Investment Program for Tourism (IDIPT) are required to implement Grievance Redress Mechanism in which following committee members are required for Redressal of the Grievances of the people.

- I. Project Manager, PIU
- II. District Tourist Officer, Department of Tourism (DoT)
- III. Community Development Officer
- IV. Representative of DC Office
- V. Representative of MC Office

As such you are requested to give the name of the Officer from your Department who can be nominated as member of the committee for Grievance Redress Cell.

Project Manager,  
PIU – Ropar

No. PIU-Ropar/Tr -3/2015/205/416

Dated: 11/12/2015

Copy to : Additional Project Director, PHTPB, IDIPT, Chandigarh for Information w.r.t.  
Letter No. PHTPB/IDIPT/2015/5873-80 dated 10.12.2015.

Project Manager,  
PIU – Ropar

*Signatures*

**LETTER ISSUED TO MUNICIPAL CORPORATION FOR FORMATION OF GRC BY PIU  
ROPAR**

Punjab Heritage and Tourism Promotion Board  
Infrastructure Development Investment Programme for Tourism (PB)  
(ADB Assisted Project)  
Project Implementation Unit – Ropar  
# 320, Giani Zia Singh Nagar, Ropar, Ph – 1881-220345  
Email: plu.ropar@gmail.com



To

PAVED/DPD 2406

The Municipal Corporation,  
Ropar

Dated: 14-12-15



No. PIU-Ropar/Tr -3/2015/

Dated:


Sub:- Implementation of Grievance Redress Mechanism.

Respected Sir,

It is to inform you that as per the requirement of Asian Development Bank (ADB) All the projects under Infrastructure Development Investment Program for Tourism (IDIPT) are required to implement Grievance Redress Mechanism in which following committee members are required for Redressal of the Grievances of the people.

- I. Project Manager, PIU
- II. District Tourist Officer, Department of Tourism (DoT)
- III. Community Development Officer
- IV. Representative of DC Office
- V. Representative of MC Office

As such you are requested to give the name of the Officer from your Department who can be nominated as member of the committee for Grievance Redress Cell.

  
Project Manager,  
PIU – Ropar

No. PIU-Ropar/Tr -3/2015/205/41P

Dated: 11/12/2015

Copy to : Additional Project Director, PHTPB, IDIPT, Chandigarh for Information w.r.t.  
Letter No. PHTPB/IDIPT/2015/5873-80 dated 10.12.2015.

  
Project Manager,  
PIU – Ropar

  
  
15.12.15

A



## OCCUPATIONAL HEALTH AND SAFETY SUGGESTED IN CONTRACTOR'S AGREEMENT

28

- (xi) Ensure moving equipment is outfitted with audible back-up alarms.
- (xii) Mark and provide sign boards in the construction zone and areas for storage and disposal. Signage shall be in accordance with international standards and be well known to, and easily understood by workers, visitors, and the general public as appropriate.

66. **Impacts on Socio-Economic Activities.** Manpower will be required during the 24 months construction phase. This can help generate contractual employment and increase in local revenue. Thus potential impact is positive and long-term. As per preliminary design, land acquisition and closure of roads are not required. However, minor negative impacts are anticipated, these impacts are negative and moderate but short-term and temporary. The contractor will need to adopt the following mitigation measures:

- (i) Leave space for access in the project area.
- (ii) Provide sign boards for pedestrians/ tourists to inform nature and duration of construction works and contact numbers for concerns/complaints.
- (iii) Employ at least 50% of the labor force, or to the maximum extent, local persons within the 2-km immediate area if manpower is available.

67. **Summary of Mitigation Measures during Construction.** Table 10 provides summary of mitigation measures that needs to be considered by the contractor during construction phase

**Table 10: Summary of Mitigation Measures during Construction Phase**

Potential Impact	Mitigation Measures
Erosion hazards	<ul style="list-style-type: none"> <li>• Save topsoil removed during excavation and use to reclaim disturbed areas, as soon as it is possible to do so.</li> <li>• Use dust abatement such as water spraying to minimize windblown erosion.</li> <li>• Provide temporary stabilization of disturbed/excavated areas that are not actively under construction.</li> <li>• Apply erosion controls (e.g., silt traps) along the drainage leading to the water bodies.</li> <li>• Maintain vegetative cover surrounding the project area to prevent erosion and periodically monitor to assess erosion.</li> <li>• Clean and maintain catch basins, drainage ditches, and culverts regularly.</li> <li>• Conduct routine site inspections to assess the effectiveness of and the maintenance requirements for erosion and sediment control systems</li> </ul>
Impacts on water quality	<ul style="list-style-type: none"> <li>• Schedule civil works during non-monsoon season, to the maximum extent possible.</li> <li>• Ensure drainages and water bodies within the construction zones are kept free of obstructions.</li> <li>• Keep loose soil material and stockpiles out of drains, flow-lines and watercourses.</li> <li>• Avoid stockpiling of excavated and construction materials (sand, gravel, cement, etc.) unless covered by tarpaulins or plastic sheets.</li> <li>• Re-use/utilize, to maximum extent possible, excavated materials.</li> <li>• Dispose any residuals at identified disposal site (PRUDSC will identify approved sites).</li> <li>• Dispose waste oil and lubricants generated as per provisions of Hazardous Waste (Management and Handling) Rules, 1989.</li> <li>• Develop a spill prevention and containment plan, educate workers about the plan, and have the necessary materials on site prior to and during construction.</li> <li>• Refuel equipment within the designated refueling containment area away from drainages, nullahs, or any water body.</li> <li>• Inspect all vehicles daily for fluid leaks before leaving the vehicle staging area, and</li> </ul>

For M/s. Brightway Contractors

& Developers

Authorized Signatory

For Project Director & Team Project Director



materials and solid wastes (such as removed concrete, wood, trees and plants, packaging materials, empty containers, oils, lubricants, and other similar items). These impacts are negative but short-term and reversible by mitigation measures. The contractor will need to adopt the following mitigation measures:

- (i) Prepare and implement a waste management plan. Manage solid waste according to the following hierarchy: reuse, recycling and disposal. Include them in the waste management plan with designated/approved disposal areas.
- (ii) Coordinate with Local Municipal Authority for beneficial uses of excavated soils/silts/sediments or immediately dispose them to designated areas.
- (iii) Recover used oil and lubricants and reuse; or remove from the sites.
- (iv) Avoid stockpiling and remove all excavated soils, excess construction materials, and solid waste (removed concrete, wood, trees and plants, packaging materials, empty containers, oils, lubricants, and other similar items) immediately.
- (v) Prohibit disposal of any material or wastes (including human waste) into drainage, nallah, or watercourse.

65. **Impacts on Occupational Health and Safety.** Residential accommodation for workers shall be proposed atleast 500m from the subproject area and nearby settlements. Exposure to work-related chemical, physical, biological and social hazard is typically intermittent and of short duration, but it is likely to reoccur. Potential impacts are negative and long-term but reversible by mitigation measures. Overall, the contractor should comply with IFC EHS Guidelines on Occupational Health and Safety (this can be downloaded from <http://www1.lec.org/web/ecom/connections/2882480552-8603cc03645515ee1823%2bOccupational%2bHealth%2bSafety.pdf?MOD=AJPERES>). The contractor will be required to:

- (i) Disallow worker exposure to noise level greater than 85 dBA for aduration of more than 8 hours per day without hearing protection. The use of hearing protection shall be enforced actively.
- (ii) Develop comprehensive site-specific health and safety (H&S) plan. The overall objective is to provide guidance to contractors on establishing a management strategy and applying practices that are intended to eliminate, or reduce, fatalities, injuries and illnesses for workers.
- (iii) Include in H&S plan measures such as: (i) type of hazards during excavation works; (ii) corresponding personal protective equipment for each identified hazard; (iii) H&S training for all site personnel; (iv) procedures to be followed for all site activities; and (v) documentation of work-related accidents.
- (iv) Provide H&S orientation training to all new workers to ensure that they are apprised of the rules of work at the site, personal protective protection and prevention of injury to fellow workers.
- (v) Ensure that qualified first-aiders are available and first aid can be provided at all times. Equipped first-aid stations shall be easily accessible throughout the site as well as in construction camps.
- (vi) Provide medical insurance coverage for workers.
- (vii) Secure construction zone from unauthorized intrusion and accident risks.
- (viii) Provide supplies of potable drinking water.
- (ix) Provide clean eating areas where workers are not exposed to hazardous or noxious substances.
- (x) Provide visitor orientation if visitors to the site can gain access to areas where hazardous conditions or substances may be present. Ensure also that visitor's do not enter hazard areas unescorted.
- (xi) Ensure the visibility of workers through the use of high visibility vests when working in or walking through heavy equipment operating areas.

For M/s. Brightwork Consultants

& Director

Signature

For Punjab Heritage & Tourism Promotion Board (PHTPB)

Signature

For Punjab Sahitya Akademi

Signature

## INVOLUNTARY RESETTLEMENT CATEGORISATION FORM

### INVOLUNTARY RESETTLEMENT IMPACT CATEGORIZATION CHECKLIST

Date: 30.11.2015

<b>Project Data</b>	
Country/Project No./Project Title	INDIA/ LOAN No: 3223-IND/INFRASTRUCTURE DEVELOPMENT INVESTMENT PROGRAM FOR TOURISM-PUNJAB
Subproject title	ECO-TOURISM DEVELOPMENT OF WILDLIFE ZOO, VILLAGE CHHAT, MOHALI DISTRICT (PACKAGE NO.: PB/IDIPT/T3/05/04)
Project Executing Agency	GOVERNMENT OF PUNJAB THROUGH DEPARTMENT OF TOURISM (DOT)
Project Implementing Agency	PUNJAB HERITAGE AND TOURISM PROMOTION BOARD (PHTPB)
Modality	MULTITRANCHE FINANCING FACILITY (MFF)
<input type="checkbox"/> Project Loan <input type="checkbox"/> Program Loan <input type="checkbox"/> Financial Intermediary <input type="checkbox"/> General Corporate Finance <input type="checkbox"/> Sector Loan <input checked="" type="checkbox"/> MFF <input type="checkbox"/> Emergency Assistance <input type="checkbox"/> Grant <input type="checkbox"/> Other financing modalities:	
<b>IP Impact categorization</b> <input type="checkbox"/> New <input type="checkbox"/> Re-categorization <input checked="" type="checkbox"/> Previous Category	
<input type="checkbox"/> <b>Category A:</b> Significant IR impact (200+ persons (not households!) are physically displaced from residence or lose more than 10% of productive (income generating) assets)	
<input type="checkbox"/> <b>Category B:</b> Non-significant IR impact	
<input checked="" type="checkbox"/> <b>Category C:</b> No IR impact	
<b>Prepared by:</b>	
Social Development Specialist (Name, title, signature)	<i>[Signature]</i> K.L. Malhotra
Date: 08.02.16	ESS, PMU
For Project Implementing Agency (Name, title, signature)	<i>[Signature]</i> BASANTA RAJKUMAR
Date: 08.02.16	ADD
For Project Executing Agency (Name, title, signature)	<i>[Signature]</i> Project Director
Date: 08.02.16	Infrastructure Development

- Please attach subproject details, such SAR, DPR or a brief summary of subproject activities proposed

**Involuntary Resettlement Impact Categorization Checklist**

PROBABLE INVOLUNTARY RESETTLEMENT EFFECTS	YES	NO	NOT KNOWN	REMARKS
<b>Involuntary Acquisition of Land</b>				
1. Will there be land acquisition?		√		
2. Is the site for land acquisition known?				Not applicable
3. Is the ownership status and current usage of land to be acquired known?				Not applicable
4. Will easement be utilized within an existing Right of Way (ROW)?				Not applicable
5. Will there be loss of shelter and residential land due to land acquisition?				Not applicable
6. Will there be loss of agricultural and other productive assets due to land acquisition?				Not applicable
7. Will there be losses of crops, trees, and fixed assets due to land acquisition?				Not applicable
8. Will there be loss of businesses or enterprises due to land acquisition?				Not applicable
9. Will there be loss of income sources and means of livelihoods due to land acquisition?				Not applicable
<b>Involuntary restrictions on land use or on access to legally designated parks and protected areas</b>				
10. Will people lose access to natural resources, communal facilities and services?		√		
11. If land use is changed, will it have an adverse impact on social and economic activities?		√		
12. Will access to land and resources owned communally or by the state be restricted?		√		
<b>Information on Displaced Persons</b>				
Any estimate of the likely number of persons that will be displaced by the Project? [ ] No [ ] Yes				
<b>Not Applicable</b>				
If yes, approximately how many? _____				
Are any of them poor, female-heads of households, or vulnerable to poverty risks? [ ] No [ ] Yes				
<b>Not Applicable</b>				
Are any displaced persons from indigenous or ethnic minority groups [ ] No [ ] Yes				
<b>Not Applicable</b>				

Note: The project team may attach additional information on the project, as necessary.

## INDIGENOUS PEOPLE CATEGORISATION FORM

### INDIGENOUS PEOPLES IMPACT CATEGORIZATION CHECKLIST

Date: 30.11.2015

<b>Project Data</b>	
Country/Project No./Project Title	INDIA/ LOAN No: 3223-IND/INFRASTRUCTURE DEVELOPMENT INVESTMENT PROGRAM FOR TOURISM-PUNJAB
Subproject title	ECO-TOURISM DEVELOPMENT OF WILDLIFE ZOO, VILLAGE CHHAT, MOHALI DISTRICT (PACKAGE NO.: PB/IDIPT/T3/05/04)
Project Executing Agency	GOVERNMENT OF PUNJAB THROUGH DEPARTMENT OF TOURISM (DOT)
Project Implementing Agency	PUNJAB HERITAGE AND TOURISM PROMOTION BOARD (PHTPB)
Modality	MULTITRANCHE FINANCING FACILITY (MFF)
<input type="checkbox"/> Project Loan <input type="checkbox"/> Program Loan <input type="checkbox"/> Financial Intermediary <input type="checkbox"/> General Corporate Finance <input type="checkbox"/> Sector Loan <input checked="" type="checkbox"/> MFF <input type="checkbox"/> Emergency Assistance <input type="checkbox"/> Grant <input type="checkbox"/> Other financing modalities:	
<b>IP Impact categorization</b> <input type="checkbox"/> New <input type="checkbox"/> Re-categorization <input checked="" type="checkbox"/> Previous Category	
<input type="checkbox"/> <b>Category A:</b> Significant IP impact	
<input type="checkbox"/> <b>Category B:</b> Non-significant IP impact	
<input checked="" type="checkbox"/> <b>Category C:</b> No IP impact	
<b>Subproject requires the broad community support of affected Indigenous Peoples communities</b> <input type="checkbox"/> Yes <input type="checkbox"/> No	
<b>Prepared by:</b>	
Social Development Specialist (Name, title, signature)	K.L. Malhotra FCS, PMU
Date: 08.02.16	
For Project Implementing Agency (Name, title, signature)	BASANTA RAJKUMAR APD
Date: 08.02.16	
For Project Executing Agency (Name, title, signature)	Project Director Infrastructure Development Investment Programme for Tourism
Date: 08.02.16	

- Please attach subproject details, such SAR, DPR or a brief summary of subproject activities proposed



**Indigenous Peoples Impact Screening Checklist**

<b>KEY CONCERNS</b> (Please provide elaborations on the Remarks column)	<b>YES</b>	<b>NO</b>	<b>NOT KNOWN</b>	<b>Remarks</b>
<b>A. Indigenous Peoples Identification</b>				
1. Are there socio-cultural groups present in or use the project area who may be considered as "tribes" (hill tribes, schedules tribes, tribal peoples), "minorities" (ethnic or national minorities), or "indigenous communities" in the project area?		✓		SAS Nagar district where subproject exists, as such is not part of the notified Fifth Schedule area <sup>1</sup> .
2. Are there national or local laws or policies as well as anthropological researches/studies that consider these groups present in or using the project area as belonging to "ethnic minorities", scheduled tribes, tribal peoples, national minorities, or cultural communities?				Not applicable
3. Do such groups self-identify as being part of a distinct social and cultural group?				Not applicable
4. Do such groups maintain collective attachments to distinct habitats or ancestral territories and/or to the natural resources in these habitats and territories?				Not applicable
5. Do such groups maintain cultural, economic, social, and political institutions distinct from the dominant society and culture?				Not applicable
6. Do such groups speak a distinct language or dialect?				Not applicable
7. Has such groups been historically, socially and economically marginalized, disempowered, excluded, and/or discriminated against?				Not applicable
8. Are such groups represented as "Indigenous Peoples" or as "ethnic minorities" or "scheduled tribes" or "tribal populations" in any formal decision-making bodies at the national or local levels?				Not applicable
<b>B. Identification of Potential Impacts</b>				Not applicable
9. Will the project directly or indirectly benefit or target Indigenous Peoples?				Not applicable
10. Will the project directly or indirectly affect Indigenous Peoples' traditional socio-cultural and belief practices? (e.g. child-rearing, health, education, arts, and governance)				Not applicable
11. Will the project affect the livelihood systems of Indigenous Peoples? (e.g., food production system, natural resource management, crafts and trade, employment status)				Not applicable
12. Will the project be in an area (land or territory) occupied, owned, or used by Indigenous Peoples, and/or claimed as ancestral domain?				Not applicable
<b>C. Identification of Special Requirements</b> <i>Will the project activities include:</i>				Not applicable
13. Commercial development of the cultural resources and knowledge of Indigenous Peoples?				Not applicable

<sup>1</sup> Fifth Schedule under Article 244(1) of Constitution defines "Scheduled Areas" as such areas as the President may by order declare to be Scheduled Areas after consultation with the Governor of that State. The criteria for declaring any area as a "Scheduled Area" under the Fifth Schedule are: (a) preponderance of tribal population, (b) compactness and reasonable size of the area, (c) a viable administrative entity such as a district, block or Taluka, and (d) economic backwardness of the area as compared to the neighbouring areas.



<b>KEY CONCERNS</b> (Please provide elaborations on the Remarks column)	<b>YES</b>	<b>NO</b>	<b>NOT KNOWN</b>	<b>Remarks</b>
14. Physical displacement from traditional or customary lands?				Not applicable
15. Commercial development of natural resources (such as minerals, hydrocarbons, forests, water, hunting or fishing grounds) within customary lands under use that would impact the livelihoods or the cultural, ceremonial, spiritual uses that define the identity and community of Indigenous Peoples?				Not applicable
16. Establishing legal recognition of rights to lands and territories that are traditionally owned or customarily used, occupied or claimed by indigenous peoples?				Not applicable
17. Acquisition of lands that are traditionally owned or customarily used occupied or claimed by indigenous peoples?				Not applicable

**D. Anticipated project impacts on Indigenous Peoples**

<b>Project component / Activity / output</b>	<b>Anticipated positive effect</b>	<b>Anticipated negative effect</b>
<b>LIST ALL PROJECT COMPONENTS / ACTIVITIES / OUTPUTS HERE</b>	<b>INDICATE EFFECTS TO IPS OR PUT N/A AS NECESSARY</b>	
	<b>Not applicable</b>	<b>Not applicable</b>

Note: The project team may attach additional information on the project, as necessary.