

Environmental Monitoring Report

Semestral Report
March 2017

GEO: Urban Services Improvement Investment Program – Project 2

Prepared by United Water Supply Company of Georgia, LLC, Government of Georgia for the Asian Development Bank.

This environmental monitoring report is a document of the borrower. The views expressed herein do not necessarily represent those of ADB's Board of Directors, Management, or staff, and may be preliminary in nature.

Bi-annual Environmental Monitoring Report

Project Number: 43405-023

July-December 2016

Loan Number 2807-GEO (SF)

GEORGIA: URBAN SERVICES IMPROVEMENT INVESTMENT PROGRAM (TRANCHE 2) (FINANCED BY THE ASIAN DEVELOPMENT BANK)

Prepared by: Ketevan Chomakhidze, Environmental Safeguards Specialist
“United Water Supply Company of Georgia”, LLC Tbilisi, Georgia

For: The Ministry of Regional Development and Infrastructure of
Georgia and the Asian Development Bank

Endorsed by: Tinatin Lebanidze, Head of Strategic Planning and Donors
Relations Department

December 2016

This environmental monitoring report is a document of the borrower. The views expressed herein do not necessarily represent those of ADB's Board of Directors, management, or staff, and may be preliminary in nature.

In preparing any country program or strategy, financing any project, or by making any designation of or reference to a particular territory or geographic area in this document, the Asian Development Bank does not intend to make any judgments as to the legal or other status of any territory or area.

ABBREVIATIONS

| | |
|------------------|--|
| ADB | Asian Development Bank |
| DC | Design Consultant |
| DREP | Division of Resettlement and Environmental Protection |
| EA | Executing Agency |
| EARF | Environmental Assessment and Review Framework |
| EHS | Environmental Health & Safety |
| EIA | Environmental Impact Assessment |
| EIP | Environmental Impact Permit |
| EMP/ SEMP | Environnemental Management Plan/ Site-Specific Environmental Management Plan |
| ES/ SES | Environmental Specialist/ Senior Environmental Specialist |
| GoG | Government of Georgia |
| GRC | Grievance Redress Committee |
| GRM | Grievance Redress Mechanism |
| USIIP | Urban Sector Improvement Investment Program |
| IA | Implementing Agency |
| IEE | Initial Environmental Examination |
| MFF | Multi-tranche Financing Facility |
| MoENRP | Ministry of Environment and Natural Resources Protection |
| MoRDI | Ministry of Regional Development & Infrastructure |
| NEA | National Environmental Agency |
| SC | Supervision Consultant |
| UWSCG | United Water Supply Company of Georgia |
| WSS | Water Supply & Sewerage |
| WTP | Water Treatment Plan |
| WWTP | Waste Water Treatment Plant |

TABLE OF CONTENTS

| | |
|---|----|
| PART I – INTRODUCTION | 7 |
| 1.1 Construction activities and project progress during the previous 6 months | 7 |
| A. General information about the program/SUBPROJECTS | 7 |
| B. Post Construction Audit..... | 8 |
| C. Construction activities and project progress during the previous 6 months..... | 8 |
| 1.2 Changes in Project Organization and Environmental Management Team | 9 |
| PART II - ENVIRONMENTAL MONITORING..... | 13 |
| D. Monitoring Measurement Data..... | 15 |
| PART III - ENVIRONMENTAL MANAGEMENT | 15 |
| 3.1 The Environmental Management System, site-specific environmental management plan (SSEMP) and work plans | 15 |
| 3.2 Site Inspections and Audits..... | 17 |
| 3.3 Non-Compliance Notices | 16 |
| 3.4 Corrective Action Plans | 16 |
| 3.5 Actions taken to reflect the findings of ADB mission carried out on 7-9 October 2015: | 17 |
| 3.6 Consultations and Complaints | 19 |
| PART IV – CONCLUSIONS AND ACTION PLAN FOR THE NEXT PERIOD..... | 20 |
| 4.1 Conclusions and recommendations | 20 |
| 4.2 Action Plan for the next period..... | 21 |

ANNEXES:

| | |
|-----------------|--|
| ANNEX A: | Measurement Data |
| ANNEX B: | Photos of sites |
| ANNEX C: | Non-Compliance Notice |
| ANNEX D: | Implementation Report on the Environmental Impact Assessment (EIA)/Initial Environmental Examination (IEE) Mitigation Requirements |
| ANNEX E: | Grievance Redress Mechanism |
| ANNEX F: | Weekly Environmental Monitoring Form |

LIST OF TABLES:

| | |
|------------------|--|
| Table 1: | Project progress during the previous 6 months (July-December 2016) |
| Table 2: | List of contracts under USIIP, T2 |
| Table 3: | Parametric Measurement Guidelines |
| Table 4: | Noise Level Guidelines |
| Table 5: | Monitoring measurements under REG-02 and URE-01 |
| Table 6: | Status of Site-Specific Environmental management plans |
| Table 7: | The schedule of conducted audits and monitoring during the reporting period |
| Table 8: | Actions taken for implementation of mitigation measures under REG-02 by the end of December 2016 |
| Table 9: | Status of findings of ADB mission carried out on 29-30 September 2016 |
| Table 10: | Status of implementation of action plan of January-June 2016 |
| Table 11: | Recommendations to address Environmental Issues |
| Table 12: | The specific plan for environmental measurement (Reg-02) |
| Table 13: | The specific plan for environmental measurement (Ure-01) |

LIST OF FIGURES:

| | |
|------------------|---|
| Figure 1: | Structure Diagram of the Environmental Management Unit of UWSCG |
| Figure 2: | Structure Diagram of the Agencies Involved in Investment Program Implementation |

PART I – INTRODUCTION

1.1 Construction activities and project progress during the previous 6 months

A. General information about the program/SUBPROJECTS

1. The present Bi-annual Environmental Monitoring Report covers July-December 2016 time period.
2. The Urban Services Improvement Investment Program was developed as the Government's response to the lack of adequate and/or safe water supply, sewerage and sanitation in urban areas of Georgia. This is intended to optimize social and economic development in selected urban areas through improved urban water and sanitation services, and is financed by the ADB through its Multi-tranche Financing Facility. The Ministry of Regional Development and Infrastructure is the Executing Agency and the United Water Supply Company of Georgia, LLC is the Implementing Agency of the Investment Program. UWSCG is a 100% state-owned company.
3. The Investment Program will improve infrastructure through the development, design and implementation of a series of subprojects, each providing improvements in a particular sector (water supply and/or sewerage) in one town. Subprojects will rehabilitate existing infrastructure and/or create new and expanded infrastructure to meet the present and future demand. Water supply improvements will include source augmentation and head works, pumping systems, treatment facilities, transmission and distribution network; and, sewerage improvement works will include sewer network, pumping stations, main collectors and waste water treatment plants.
4. The Investment Program will improve the health of residents in the urban centers of Mestia, Anaklia, Kutaisi, Poti, Ureki, Zugdidi and Marneuli. The outcome of the Investment Program is improved WSS services in these urban centers.
5. Tranche 2 of the Investment Program includes:
 - Construction of Anaklia Water and Sewerage Network (ANA-01);
 - Construction of Mestia Water and Sewerage Network (Mes-02),
 - Construction of Anaklia Waste Water Treatment Plant (Reg-02),
 - Construction of Water Supply and Wastewater Network in Ureki/Phase II (URE-01).

The following projects are financed under Tranche 2:

- MES-02, Rehabilitation of Water Supply and Sewerage System in Mestia (ongoing)
 - ANA-01, Construction of Water Supply System and Sewerage Networks in Anaklia (completed)
 - REG-02 Anaklia Lot, Construction of Wastewater Treatment Plant in Anaklia (ongoing)
 - URE-01, Construction of Water Supply and Wastewater Network in Ureki / Phase 2 (ongoing)
6. **Anaklia Water and Sewerage Network (Contract ANA-01).** The construction involved the supply and installation of approximately 69 kilometers of water supply and 70 kilometers of sewerage networks and service connections to all residents and hotels defined for the year 2040 for Anaklia and Ganmukhuri villages (total projected population of about 25,600 people). The construction works under Contract ANA-01 started on 16th of January 2012 and was completed in May 2014.

7. **Mestia Water and Sewerage Networks (Contract MES-02).** The Construction rehabilitation of approximately 30 kilometers of water supply and 46 kilometers of sewerage network will cover the whole town of Mestia including the historic center and the future touristic zones covering all residents and hotels defined for the year 2040 thus benefiting total projected population of about 25,300 people. The construction works under MES-02 project started in October 2011 and was scheduled for completion by the mid of August, 2015.
8. Construction works have been completed, but there are some disputed issues related to the correction of defects. Contractor, JV of New Energy Ltd. & Enguri 2006 Ltd., submitted final payment request on June 2015. IPMO and the technical department of UWSCG has evaluated the request and carried out visual survey of construction works in Mestia. As a result it was found that the works are incomplete (i.e. missing installed manholes) and that the construction supervision (Eptisa) should have approved IPC-13. However, UWSCG informed ADB Mission that the construction supervision would carry out a post-facto inspection to re-evaluate the works and that dispute should be resolved by the end of the year. The dispute board will also be established to solve this issue.

B. Post Construction Audit

9. Mes-02 project Compliance Audit was carried out in November 2015. The main findings revealed during the post construction audit are presented in Bi-annual report of July-December 2015.
10. Ana-01 project Compliance Audit Report was prepared in September 2014. The main findings revealed during the post construction audit are presented in EMR of July-December 2014.

Reg-02 and Ure-01 projects

11. **Anaklia Wastewater Treatment Plant (Contract REG-02).** The scope of works includes the construction of a Wastewater Treatment Plant (the treated wastewater to be discharged into Enguri River). The bidder was required to bid for the design and construction of the first stage of a modular wastewater treatment plant (WWTP) in Anaklia. The design is to cater for the full flow and pollution loads for the 2040 population equivalent of 25,611PE but the first stage of construction is to provide all treatment processes for only half of the flow and loads calculated for 2040. In addition to the WWTP, the Contractor shall design and build the pressure lines leading from the collector network to the WWTP and from the WWTP to the outlet into the river. The contract for construction of Anaklia WWTP was signed on September 22, 2014. Completion data is scheduled on December 6, 2016.
12. However the Contractor is requesting an extension until May 2017 due additional soil improvement works. A Dispute Resolution Board has been set up to solve the issue. A decision is expected before the end of the February 2017.
13. **Construction of Water Supply and Wastewater Network in Ureki.** Construction of Water Supply and Wastewater Network in Ureki/Phase II (URE-01). The project is simultaneously financed from Tranches I, II and III. The main works under Tranche II will comprise laying of sewerage network with the total length of 70 km. (Contract was signed on 22 September 2014 and notice to proceed given on 8 December 2014. project will be completed in 2016).

C. Construction activities and project progress during the previous 6 months

14. Overall physical progress of the work under the ANA-01 and Mes-02 projects are 100%. No activities taken place during the reporting period of January-June 2016.

Construction Activities during previous 6 months under Reg-02 and Ure-01 projects (July-December 2016) are as follows:

Table 1: Project progress during the previous 6 months (July-December 2016).

Reg-02 Anaklia WWTP

| REG-02 | Anaklia WWTP |
|--|-------------------------------|
| Works undertaken during July-December 2016 | Effluent collector - 99% |
| | Construction of WWTP - 90% |
| | Mechanical installation - 50% |

URE-01

| Site URE-01 | Water Mains Installation |
|--|---|
| Works undertaken during July – December 2016 | 13.775 km of PE 100 pipes OD 710, SDR 11 installed – 60.69% |
| Site | Water network |
| Works undertaken during July– December 2016 | 6.845 km of HDPE pipes DN 25-560 – 13.55% |
| Site | Sewerage network |
| Works undertaken during July – December 2016 | 5.296 km of PE 100 and corrugated pipes OD 110-500 mm, SDR 11 installed – 7.53% |
| Site | Construction of Reservoir #1 |
| Works undertaken during July – December 2016 | Excavation Works – 20% |

1.2 Changes in Project Organization and Environmental Management Team

Agencies Involved in Investment Program Implementation

15. The following agencies are involved in implementing the Investment program: Ministry of Regional Development and Infrastructure (MoRDI) is the Executing Agency (EA) responsible for management, coordination and execution of all activities funded under the loan. MoRDI has overall responsibility for compliance with loan covenants.
16. United Water Supply Company of Georgia (UWSCG) is the implementing agency (IA), which is responsible for administration, implementation (design, construction and operation) and all day-to-day activities under the loan. An Investment Program Management Office (IPMO), which is under the Department for Strategic Planning and Donors Relation (the former name of the department of Donors Relations changed in July 2016) is established within the UWSCG for all Investment Program related functions. The IPMO coordinates construction of subprojects, and ensures consistency of approach and performance. Due to the reorganization of the Company a new Department of Environmental Protection, Resettlement and Permission is established under the UWSCG, which includes Unit of

Construction Permission. While the changes happen in 22 December 2016, the decision will be forced from January 2017.

17. UWSCG as responsible IA for the project recruited a Supervision Consultant (SC). The national and international team of consultants assists UWSCG in the supervision of the construction of subprojects under the USIIP. The SC also provides capacity building training to contractor staff in the management and operation and maintenance of the subprojects. The SC assists UWSCG in ensuring that the subprojects are implemented according to the specified standards. SC assignment also includes the supervising of the implementation of the environmental management plans.
18. All mitigation measures during construction have to be implemented by the contractor and these are monitored by the supervision consultant (SC). To ensure the smooth implementation of EMPs and SEMP of subprojects, an Environmental Management Specialist (EMS) is employed by the SC/EPTISA. SC/EMS conducts routine observations and surveys, prepares quarterly environmental reports and submits these to UWSCG.
19. The Contractor has the following obligations:
 - to prepare SSEMPs;
 - to employ Environmental Consultant responsible for developing and implementing the construction phase SSEMPs and for providing the corresponding information to UWSCG and SC;
 - to develop Waste Management Plan and agreed with the MoENRP and Local Government
20. DC is responsible for developing and incorporation of mitigation measures in design and construction.
21. The environmental specialist (ES) is hired by UWSCG under the USIIP to assist and advise the Resettlement and Environmental Protection Unit (UREP) in USIIP program implementation in compliance with the ADB Safeguard Policy Statement 2009 and National Legislation, and oversee the work of DCs and SCs in safeguards compliance. ES supports UREP in EARF implementation, in particular, reviewing IEE/EIA Reports and overseeing implementation of EMP/SSEMPs and in training and capacity-building activities. The ES prepares bi-annual and annual environmental monitoring reports and submits to ADB.
22. UREP is responsible for the implementation of mitigation and monitoring measures during construction and operation of subprojects under USIIP. Currently UREP is staffed with a Head of Division, and one specialist who is responsible for both resettlement and environmental issues.
23. ADB is the donor financing the Investment Program Environmental management organization is shown in Figure 1 and Figure 2.

Figure 1: Structure Diagram of the Environmental Management Unit of UWSCG

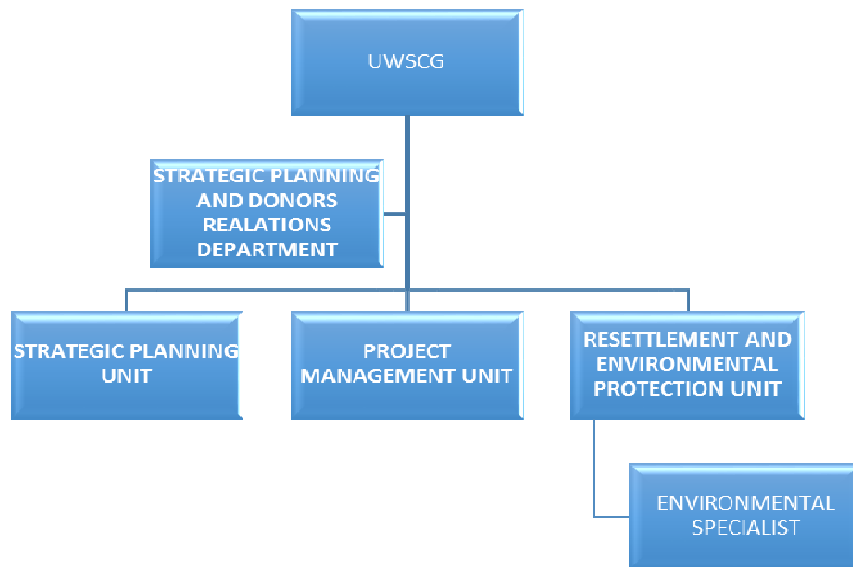
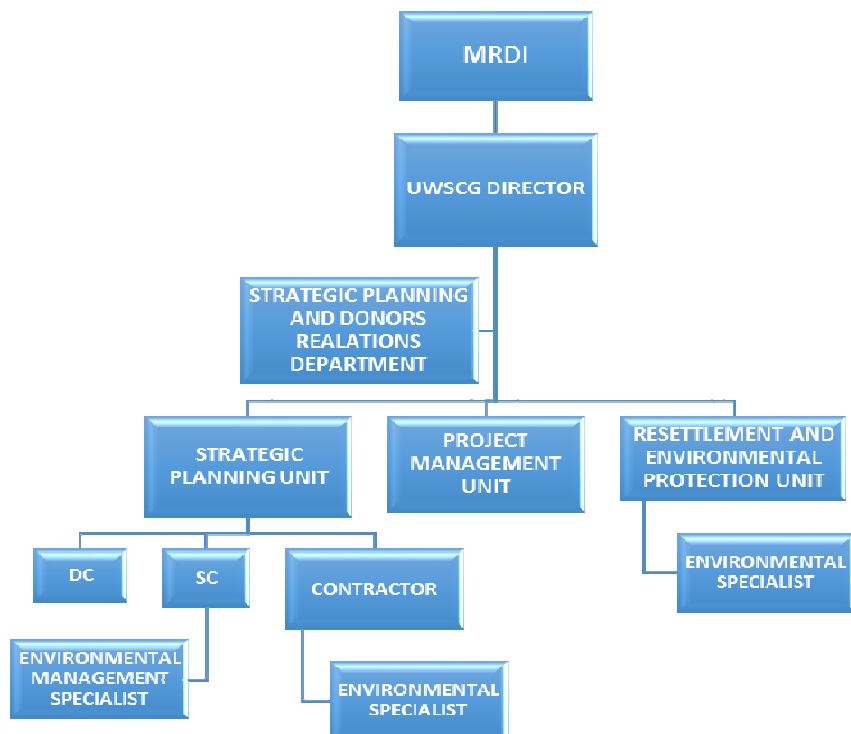


Figure 2: Structure Diagram of the Agencies Involved in Investment Program Implementation



1.3 Relationships with Contractors, Owner, Lender, etc

24. Relationships with Contractors, Owner and Lender are considered as normal working relationships. At the working level, coordination of environmental issues has been satisfactory, the government agencies, UWSCG, consultants and contractors are in frequent communication and consultation.
25. Ministry of Regional Development and Infrastructure (MoRDI) is the Executing Agency (EA) responsible for oversee progress and provide guidance on the Investment Program implementation; convene regular meetings in consultation with the SC and UWSCG; ensure compliance with Investment Program covenants.
26. Oversight of the USIIP with regards to environmental management is the responsibility of the environmental safeguards team, in particular UWSCG/UREP and the Environmental Specialist of USIIP.
27. The team has constant communication with the Supervision Consultant, Contractor, reviews/ comments all environmental reports submitted by DC, SC and contractors.
28. SSEMPs were prepared by contractor, endorsed by SC/Eptisa and approved by UWSCG/UREP.
29. SC is responsible for environmental capacity building, monitoring of implementation of SEMP's and for developing quarterly reports. The Contractor has a full time Environmental Specialist who carries out day to day monitoring and submits monthly progress reports.
30. ADB oversees project sites regularly and gives clear instructions for the project sites improvements with regard to environmental safeguards.
31. To resolve the observed environmental safeguard issues, the regular Environmental Meetings are organized with participation of UWSCG/IPMO/UREP, Eptisa and Contractors. During the meetings environmental issues and implementation of the mitigation measures are discussed.
32. A Grievance Redress Committee has been established within Aan-01 Project for Anaklia, that will be functional for Reg-02 of Anaklia WWTP as well. A new GRC is established for Ure-01 project.
33. Contractor of REG-02 project operated during the reporting period with the following sub-contractor: Ltd "Prime Concrete".
34. Below are the list of sub-contractors of "Ludwig Pfeiffer Hech und Tiefbau GmbH and Co" under the Reg-02 project
 - Zugdidi Municipality – contract was signed for disposal of Municipal Waste from Anaklia WWTP site to the Zugdidi landfill
 - "Solid Waste Management Company of Georgia" – contract was signed for disposal of Solid Waste from Anaklia WWTP site to the Zugdidi landfill
35. Below are the list of subcontractors of PERI Ltd (Ure-01 project) for Disposal of Municipal Waste and extraction of minerals (gravel, ballast, etc)
 - Ureki Municipality - contract was signed for disposal of Municipal Waste from Ureki WWTP site to the Ureki landfill
 - License issued to Ltd Peri by the MoENRP for mineral extraction (gravel, ballast) on the basis of the purchase agreement signed between the Ltd "Peri" and Ltd "Anagi".
36. Monthly site meetings have taken place with all Contractors during the reporting period, with a focus on progress and technical problems as well as environmental safeguard issues.

37. Under the REG-02 and Ure-01 project contractors has signed agreement with “National Environmental Agency” for the bi-annual monitoring measurements (dust, CO, NO2, SO2, noise) of all construction sites.
38. Project organization for the awarded contracts listed above is given in the table 2 below.

Table 2: List of contracts under USIIP, T2

| Contract # | Employer | Contractor |
|--|----------|--|
| Contract No: (UWSC/ICB/CW/2012/ANA-01) | UWSCG | Joint Venture of Peri Ltd and Modern Business Group LLC |
| Contract No: (UWSCG/ICB/CW/2011/MES-02) | UWSCG | Joint Venture of New Energy LTD – Georgia and Enguri 2006 LTD (From 11 April 2013 the name of Enguri 2006 LTD has been changed into – New Construction LTD |
| Contract No: UWSCG/USSIIP/ICB/CW/REG-02 | UWSCG | JV of Ludwig Pfeiffer Hoch-und Tiefbau GmbH & Co.KG (Germany) and ProtechnoSrl (Italy) |
| Contract No: P43405-ICB-URE-01 | UWSCG | JV of Peri Ltd (Georgia) Leading Partner and Slon LLC (Azerbaijan) |

PART II - ENVIRONMENTAL MONITORING

39. Individual and joint on-site monitoring activities were conducted by Environmental Monitoring Specialist of SC and Environmental Specialist of UREP under USIIP on a regular basis, during the period January-June 2016. Unscheduled monitoring visits were carried out also and non-compliance notes have been issued to the contractor as needed. Mitigation measures to reduce major environmental impacts have been instructed to contractors during the monitoring visits.
40. The monitoring activities included monitoring of compliance of construction activities under Reg-02 project sites to the SSEMP requirements.
41. Environmental Monitoring Specialist hired under the REG-02 subproject conducted the day-to-day monitoring of the construction sites, developed the monthly monitoring reports and submitted to SC/Eptisa.
42. Environmental Monitoring Specialist of SC developed quarterly monitoring reports for UWSCG/UREP based on the monthly reports submitted by Contractor, and based on environmental site inspection.
43. ES of UREP performed monitoring of contractor’s performance with the approved EMPs and SSEMPs, environmental standards and other environmental commitments of the contractor. ES developed bi-annual and annual environmental monitoring reports and submitted to ADB based on the quarterly reports prepared by SC and monitoring results.
44. The USIIP’s Environmental Impact Monitoring and Mitigation is carried out in accordance with the updated EMPs and SSEMPs prepared by the Contractors. The construction activities affecting the environment are as follows:

- Site Establishment
- Site Clearance and top soil Stripping
- Excavation Works

45. In accordance with the IEE, and the accompanying Environmental Monitoring Plan (EMP), the Contractor is required to undertake parametric measurements and observations on air quality, noise, impact on flora and fauna and socio-cultural resources. Locations for the measurements were initially identified in the IEE. Accordingly, the monitoring guidelines were set as shown in the Table 3 below (Ure-01 and REG-02 are reported in this EMR):

Table 3: Parametric Measurement Guidelines

| Parameters | Frequency & Location | Remarks |
|--|--|---|
| Reg-02 | | |
| Air Quality | Every 3 months Reservoir #1, Pumping Station, Well Fields, Networks, Transmission Main | Watering site during excavation works to avoid dust spreading Conduct measurements of Dusts Mg/m3; CO Mg/m3; NO2 Mg/m3; SO2 Mg/m3 |
| Noise | Every 3 months Reservoir #1, Pumping Station, Well Fields, Networks, Transmission Main | Ensure that all equipment & vehicles used for construction activity are in good condition Limiting working hours to 8 am – 6 pm |
| Cultural heritage Disturbance to cultural resources | Every time along the alignment Archaeological & Cultural Properties | Contractor shall put in place a protocol for conducting any excavation work, to ensure that any chance finds are recognized and measures are taken to ensure they are protected and conserved. Calling in the state archaeological authority if a find is suspected, and taking any action they require to ensure its removal or protection. |
| Cultural heritage Disturbance to cultural resources | | |
| Air Quality | Every 3 months Reservoir #1, Pumping Station, Well Fields, Networks, Transmission Main | Watering site during excavation works to avoid dust spreading Conduct measurements of |

| Parameters | Frequency & Location | Remarks |
|---|--|---|
| | | Dusts Mg/m ³ ; CO Mg/m ³ ; NO ₂ Mg/m ³ ; SO ₂ Mg/m ³ |
| Noise | Every 3 months Reservoir #1, Pumping Station, Well Fields, Networks, Transmission Main | Ensure that all equipment & vehicles used for construction activity are in good condition Limiting working hours to 8 am – 6 pm |
| Impact on Flora and Fauna | Monthly during the site monitoring. | Avoid tree cutting In unavoidable cases, plant four trees of same species for each tree that is cut for construction |
| Cultural heritage Disturbance to cultural resources | Every time along the alignment Archaeological & Cultural Properties | Contractor shall put in place a protocol for conducting any excavation work, to ensure that any chance finds are recognized and measures are taken to ensure they are protected and conserved. Calling in the state archaeological authority if a find is suspected, and taking any action they require to ensure its removal or protection. |

46. There are no protected areas, wetlands, mangroves, or estuaries. Trees, vegetation (mostly shrubs and grasses), and animals in the subproject sites are those commonly found in built-up areas. The geological structure of the area is stable and no potential land subsidence is foreseen.

D. Monitoring Measurement Data

Anaklia Waste Water Treatment Plant (Contract REG-02):

47. The Environmental Measurements were carried out by the contractors at various construction sites in Anaklia and Ureki. The National Environmental Standard (Maximum Permissible Level) for Dust is 0,5 Mg/m³, for CO is 5,0 Mg/m³, for SO₂ – 0,5 Mg/m³. Noise level is regulated by the Decree No. 297/N “On Approval of Environmental Quality Norms” (August 16, 2001 of the Ministry of Labor, Health and Social Affairs).
48. Noise impacts should not exceed the levels presented in Table 4, or result in a maximum increase in background levels of 3 dB at the nearest receptor location off-site.

Table 4: Noise Level Guidelines

| Noise | dB | |
|---|-----------------------|-------------------------|
| | Daytime 07:00 - 22:00 | Nighttime 22:00 - 07:00 |
| Residential; institutional; educational | 55 | 45 |
| Industrial; commercial | 70 | 70 |

49. The monitoring measurements were carried out in November 2016 (See Annex A) under the Reg-02 project. Location and data are included in the table below (Table 5). The next monitoring measurements will be conducted in February 2017. The frequency, time and place of the measurements will be agreed between the Contractor, SC and UWSCG and will be indicated in the next January-June EMR of 2017. According to data received in November 2016 the obtained results did not exceed the National Environmental Standard (Maximum Permissible Level) of Dust, CO, NO₂, SO₂ and Noise, therefore no additional mitigations are required. All measurements were carried out during the day time 14:00pm-16:00pm.
50. The monitoring measurements were carried out by contractor/Peri (Ure-01) in various construction sites in November 2016 (See Annex A). Location and data are included in the table below. The next monitoring measurements will be conducted in February 2017 and results will be reflected in the next January-June EMR of 2017. According to data received in November 2016 the obtained results did not exceed the National Environmental Standard (Maximum Permissible Level) of Dust, CO, NO₂, SO₂ and Noise, therefore no additional mitigations are required. All measurements were carried out during the day time 13:00pm-15:00pm.

Table 5: Monitoring measurements under REG-02 and URE-01**Reg-02 Anaklia WWTP**

| N | Place of measurement | Coordinates | Results | | | | |
|---|---|----------------------|-------------|----------|-----------------------|-----------------------|---|
| | | | Dusts Mg/m3 | CO Mg/m3 | NO ₂ Mg/m3 | SO ₂ Mg/m3 | Noise Db - at work site (industrial zone) |
| | National Environmental Standard (Maximum Permissible Level) | | 0,5 | 5,0 | 0,2 | 0,5 | 70 |
| 1 | Anaklia | X0713640 Y4697365 | 0.363 | 0.87 | 0,001 | <0,1 | 53,7 |
| 2 | Anaklia WWTP | X0714137 Y4697757 | 0.031 | 0.63 | 0.001 | <0,1 | 45,2 |

URE-01

| Sampling place coordinates | Sample N | Noise DB | Concentration mg/m ³ | | | | | |
|---------------------------------------|----------|----------|---------------------------------|-----------------|----------------------------------|-------|--------------------------------|-----------------------------------|
| | | | Saturated hydrocarbons | Carbon oxide CO | Nitrogen dioxide NO ₂ | Dust | Sulfur dioxide SO ₂ | Hydrogen sulfide H ₂ S |
| Tsvermagala X 0731286 Y 4643708 | 1 | 40,6 | 0 | 024 | <0,001 | 0,001 | <0,1 | <0,1 |
| | 2 | 66.4 | <0.1 | 1.07 | <0,001 | 0,002 | <0,1 | <0,1 |
| | 3 | 68.2 | <0.1 | 0.93 | 0,008 | 0,004 | <0,1 | <0,1 |
| | 4 | 60.0 | 1 | 0,87 | 0,003 | 0,011 | <0,1 | <0,1 |
| Laituri X 0734834 Y 4649812 | 1 | 40.1 | 0 | 0,15 | <0,001 | 0,002 | <0,1 | <0,1 |
| | 2 | 60.0 | <1 | 1,17 | 0,008 | 0,005 | <0,1 | <0,1 |
| | 3 | 59.2 | <1 | 1.02 | 0.066 | 0.003 | <0,1 | <0,1 |
| | 4 | 64.4 | <1 | 0.97 | 0.005 | 0.003 | <0,1 | <0,1 |
| Shekvetili X0729536 4646583 | 1 | 69.7 | <1 | 0,83 | 0,001 | 0,004 | <0,1 | <0,1 |
| | 2 | 73 | 1 | 1,21 | 0,007 | 0,005 | <0,1 | <0,1 |
| | 3 | 71,2 | 1 | 1,30 | 0,007 | 0,005 | <0,1 | <0,1 |
| | 4 | 74,9 | 1 | 0,53 | 0,006 | 0,051 | <0,1 | <0,1 |
| Kaprovani X 0729313 Y 4650077 | 1 | 54,3 | <1 | 0,03 | 0,001 | 0,007 | <0,1 | <0,1 |
| | 2 | 57,2 | <1 | 0,13 | 0,001 | 0,06 | <0,1 | <0,1 |
| | 3 | 56,2 | <1 | 0,12 | 0,001 | 0,03 | <0,1 | <0,1 |
| | 4 | 55,1 | 1 | 1,04 | 0,001 | 0,03 | <0,1 | <0,1 |

PART III - ENVIRONMENTAL MANAGEMENT

3.1 The Environmental Management System, site-specific environmental management plan (SSEMP) and work plans

51. SSEMP for Anaklia WWTP was prepared by contractor under the REG-02 project in early June, 2015 before commencement of construction activities and approved by UWSCG. No SSEMPs have been prepared under the Reg-02 project (Anaklia sub-project) during the reporting period.
52. SSEMP for Rez#1, under the Ure-01 project have been updated by contractor, endorsed by Supervision Company, approved by UWSCG and reviewed/commented by the RETA Regional Environmental Consultant of ADB under RETA 8663 - Ms. Kate Dgebuadze. The previous location of the reservoir has been changed due to the expected tourism related development as well as the importance of the site in terms of biodiversity. Status of the SSEMPs are presented in table 6.

Table 6: Status of Site-Specific Environmental management plans

| SSEMP | Status | Date of Submission |
|--|--------------------------|--------------------|
| Site-Specific EMP (SSEMP) under Ure-01 project | Sent to ADB and approved | 14 November 2016 |

3.2 Site Inspections and Audits

53. Regular site monitoring visits were carried out during the reporting period by the Supervision Consultant - Eptisa and PIU - UWSCG for REG-02 and Ure-01 projects. Some monitoring visits were conducted jointly by environmental monitoring specialist of Supervision Company and environmental specialist of UESCG/USIIP. During the field visits a number of EHS issues were noted and brought to the attention to the Environmental Specialists and the H&S managers of contractors under the REG-02 and URE-01 projects.

Mitigation measures were then discussed with the contractor on-site and detailed instructions were given. Good Practice in compliance with Georgian and international H&S legislation were therefore enforced in accordance with the legislation and the Contractor's contract for REG-02 and URE-01 projects.

54. Site inspection and audit during the reporting period have been carried out on: 12-13 July 2016, 15-16 September 2016, 28-30 September 2016, 9-10 November 2016 and 18-20 November 2016. The schedule of conducted monitoring and audit during the reporting period is presented in the Table 7 below.

Table 7: The schedule of conducted audits and monitoring during the reporting period

| # | Kut-01, Ure-01 and Ure-02 Site visits | Organization | Date |
|---|---------------------------------------|--|----------------|
| 1 | Site audit | Environmental specialist of USIIP and Eptisa environmental specialists | 12-13.07.2016 |
| 2 | Site audit | Environmental specialist of USIIP and Eptisa environmental specialists | 15-16.08. 2016 |
| 3 | Site audit | Environmental specialist of USIIP and Eptisa environmental specialists | 28-30.08. 2016 |
| 4 | Site audit | Eptisa environmental specialists | 9-10.11.2016 |
| 5 | Site audit | Environmental specialist of USIIP and Eptisa environmental specialists | 18-20.11. 2016 |

55. A summary of the identified issues during the site monitoring by SC/EMS and USIIP ES, recommended mitigations and the status of implementation is presented in Annex D.

3.3 Non-Compliance Notices

REG-02 and URE-01

56. All corrective actions requested after the Monitoring of sites were mostly improved by contractor; however, there were some environmental issues that were not addressed adequately. During the supervision of construction, in the previous six months of work, three “non-compliance notices” were issued by environmental monitoring specialists of Eptisa and UWSCG to contractor, under Ure-01 project. None of the non-compliance notice was issued to the contractor/Pfaifer (Reg-02 project) during the reporting period. Almost all the discrepancies were discussed verbally during the visits. Main Findings revealed during the monitoring of the sites are described in Table 5 below.

57. It should be mentioned that all permits, licenses and agreements under the Reg-01 and Ure-01 projects are on place and available at camp site.

3.4 Corrective Action Plans

58. For the purpose of resolving the observed issues instructions were given to contractor and regular environmental meetings were carried out with the participation of UWSCG/IPMO/UREP, Eptisa, contractors. During the meetings environmental issues and implementation of the mitigation measures were discussed.

Table 8: Actions taken for implementation of mitigation measures under REG-02 by the end of December 2016.

REG-02

| Construction Site | Environmental Issues | Action taken |
|-------------------|--|---------------------|
| Anaklia WWTP | Site internally should be arranged properly and cleaned regularly. All construction materials should be properly stored. | Partially Completed |
| | Household and Hazardous Waste containers should be installed in proper place with relevant signs, with concrete basement and roofing | Completed |

URE-01

| Construction Site | Environmental Issues | Action taken |
|-----------------------|--|---------------------|
| Ureki/Well Fields | Fuel/oil spill response items (sand, sawdust, special containers) should be available | Completed |
| | Fencing of the site is to be established | Completed |
| | Topsoil should be managed according to the SSEMP | Partially Completed |
| | Machinery and equipment should be in standard technical condition (no leakage of fuel and lubricants) | Partially Completed |
| | All containers of fuel and lubricants should be placed in a special place with roofing | Partially Completed |
| | Bentonite waste should be managed according to SSEMP | Partially Completed |
| Ureki/Pumping Station | Proper place for Parking with relevant sign should be arranged | Completed |
| | All construction materials should be properly segregated and stored adequately | Completed |
| | Fuel/oil spill response items (sand, sawdust, special containers) should be equipped with relevant signs | Completed |
| | Machinery and equipment should be in standard technical condition (no leakage of fuel and lubricants) | Completed |
| | All workers (even personnel of subcontractor) should be equipped with complete PPE | Completed |
| | Site internally should be arranged properly and cleaned regularly | Completed |
| Ureki/Network | Enough and high visible safety signs/tapes and trench side barriers around of deep open trenches should be installed to avoid accident of population | Completed |

| Construction Site | Environmental Issues | Action taken |
|-------------------|---|---------------|
| | Use tarpaulins to cover during materials transportation | Not Completed |
| | Walls of the deep trenches (>1.5m) should be strengthened by boards to avoid landfall of the soil and accidents | Not Completed |
| | Accumulated waste soil should be removed from construction area and disposed in a proper place | Completed |

59. These issues were captured in project photos and are shown in Annex B.

60. An Annual Environmental Compliance Safeguard Review Mission was carried out by ADB on 29-30 September 2016 to review environmental safeguards compliance of USIIP projects.

3.5 Actions taken to reflect the findings of ADB mission carried out on 29-30 September 2016:

Table 9: Status of findings of ADB mission carried out on 29-30 September 2016

| Project | Specific Issues | Deadline for submission/Implementation | Implementation Status |
|--|---|--|---|
| Construction of the Waste Water Treatment Plant in Anaklia – T 2 | | | |
| Reg-02 Anaklia WWTP | Anaklia WWTP: Company Waste Management Plan has to be submitted to MoENRP for approval according to new Waste Management Code of Georgia. | December, 2016 | Not Submitted yet. Will be submitted by the end of December 2016. |
| | Temporary fencing is installed around the site. Permanent fencing (2 m walls) will be constructed in September 2016 by the CC. | September 2016 | Completed |
| Rehabilitation of the Water Supply System in Ureki – T2 | | | |
| Ure-01 | SSEMP for reservoir 1 will be updated due to the fact that location and design for Res#1 is changed. | May 2016 | The updated SSEMP for Res-#1 is prepared by consultant, endorsed by Eptisa and approved by UWSCG in November 2016 |
| | SSEMP for reservoir 3 will be prepared after selection of final territory. | | SSEMP for Reservoir #3 will be developed after the final location is agreed and approved. |

| | | | |
|--|---|-----------------|---|
| | All documents are available at camp site except agreement with Municipal Waste Disposal Agency and filled checklists of CC environmental specialist. | | <p>Contractor has provided agreement with the Municipal Waste Disposal Agency which is currently available at contractor's camp site.</p> <p>The contractor conducted a visual inspection for daily monitoring of sites.</p> <p>During the reporting period, the weekly monitoring form has been developed by SC/Eptisa, which has to be filled by the environmental specialist of contractor on the weekly basis (See. Annex F).</p> |
| | Company Waste Management Plan (CWMP) is under preparation and will be submitted to the MoENRP for approval till December 2016 according to the new Waste Management Code of Georgia (accepted in January 2015). | End of December | Not Submitted yet. Will be submitted by the end of December 2016. |

Table 10: Status of implementation of action plan of January-June 2016

| Specific issues: Recommendations REG-02 Anaklia WWTP | Implementation Status |
|--|--|
| <p>Conduct monitoring of environmental quality under REG-02 in Anaklia WWTP site (September 2016)</p> <p>Parameters to be measured: Dust, Carbon monoxide, Nitrogen dioxide, Sulfur dioxide, Noise</p> | <p>Completed in November 2016</p> <p>Measurement data are reflected in proposed EMR</p> |
| <p>Conduct monitoring of environmental quality under Ure-01 project sites (September 2016)</p> <p>Parameters to be measured: Dust, Carbon monoxide, Nitrogen dioxide, Sulfur dioxide, Noise</p> | <p>Completed in November 2016</p> <p>Measurement data are reflected in proposed EMR 2016</p> |

3.6 Consultations and Complaints

Public Awareness Activities

61. In July-December 2016 regular meetings were held for the households living in Anaklia, with participation of public awareness specialists of UWSCG, contractor and Eptisa.
62. Local population was provided with the brochures and information about the project and planned activities. These brochures include information about the GRM System and GRC.
63. EPTISA assisted in public awareness strategy development in Ureki and continue monitoring of awareness activities in both Ure-01 and Ure-02 projects.

Trainings carried out by Supervision Company/Eptisa

64. Environmental safety training was held by Eptisa on September 1, 2016. Venue was the head office of Eptisa, conference hall. The following topics were discussed during the training course: Environmental Management Plan (EMP); Site-Specific Environmental Management Plan (SSEMP); Environmental Impact and Mitigation Measures during Construction phase; Case studies of Environmental Impact by Contractor and proposed Mitigation Measures. Training was attended by representatives of the environmental team of contractors under the Ure-01, Ure-02 and Reg-02 projects and UWSCG / UREP. It was suggested during the preparation to conduct such training on a regular basis.
65. In addition to this on site environmental safeguard trainings were organized for URE-01, and Reg-02 project contractors on a regular basis, during the site visits. Environmental specialists of the above mentioned contractors were introduced with safeguard requirements of ADB/SPS 2009. The main issues of discussion were the site problems related to the site management and implementation of mitigation measures in accordance with the EMP/SSEMPs.

Grievance redresses mechanism (GRM)

66. For the effective implementation of a GRM system under the USIIP, UWSCG issued special order (#122) on 30 April 2014. The “Establishment of GRM within the Framework of the Asian Development Bank Funded Projects” signed by the head of UWSCG gives clear instructions to every involved stakeholder how to act when affected people are impacted by the project. Detail procedures for GRM System is provided in Annex E.
67. During the reporting period up to 10 complaints have been received under Reg-02 and Ure-01 projects. These complaints were related to the dust generation, problems concerning the water supply due to the damages on the water pipes, dropping of inert materials, waste soil or construction waste on the street. All complaints were resolved on the first level, by involving UWSCG/service center, contractor and Supervision Company.

PART IV – CONCLUSIONS AND ACTION PLAN FOR THE NEXT PERIOD

4.1 Conclusions and recommendations

68. As presented in this report, Tranche-2 of this Investment Program is being implemented in compliance with the ADB Safeguards Policy Statement, 2009, National Legislation and overall EARF;
69. Necessary instructions have been given to the Contractor by UWSCG and SC to follow the EMPs and SSEMPs requirements under REG-02 and Ure-01 projects;
70. More detailed recommendations are provided in the table below.

Table 11: Recommendations to address Environmental Issues

| Recommendations REG-02 Anaklia WWTP | Responsible Party |
|---|---|
| Prepare Waste Management Plan and submit to the MoENRP by the end of December 2016 | Contractor, with support of Supervision Company and UWSCG |
| Site internally should be arranged properly and cleaned regularly. All construction materials should be properly stored | Contractor |
| Recommendations URE-01 Ureki Network | Responsible Party |
| Prepare Waste Management Plan and submit to the MoENRP by the end of December 2016 | Contractor, with support of Supervision Company and UWSCG |
| Walls of the deep trenches (>1.5m) should be strengthened by boards to avoid landfall of the soil and accidents | Contractor with the supervision of Eptisa |
| Accumulated waste soil should be removed from construction area and disposed in a proper place | Contractor with the supervision of Eptisa |
| Recommendations URE-01 Ureki Well Fields | Responsible Party |
| Topsoil should be managed according to the SSEMP | Contractor |
| Machinery and equipment should be in standard technical condition (no leakage of fuel and lubricants) | Contractor |
| All containers of fuel and lubricants should be placed in a special place with roofing | Contractor |
| Bentonite waste should be managed according to SSEMP | Contractor |

4.2 Action Plan for the next period

- 71. Conduct regular monitoring of sites in accordance with the EMP/SSEMP requirements.
- 72. SSEMP for Reservoir #3 will be developed after the final location is agreed and approved.
- 73. Conduct monitoring of environmental quality under REG-02 project at Anaklia WWTP site, by the end of February 2017.

Table 12: The specific plan for environmental measurement (Reg-02) is as follows:

| Parameters | Quarterly measurement |
|------------------|-----------------------|
| Dust | February 2017 |
| Vibration | February 2017 |
| carbon monoxide | February 2017 |
| nitrogen dioxide | February 2017 |
| sulfur dioxide | February 2017 |
| Noise | February 2017 |

- 74. Conduct monitoring of environmental quality under URE-01 project at Rez-01 and network sites, by the end of February 2017.

Table 13: The specific plan for environmental measurement (Ure-01) is as follows:

| Parameters | Quarterly measurement |
|------------------|-----------------------|
| Dust | February 2017 |
| Vibration | February 2017 |
| carbon monoxide | February 2017 |
| nitrogen dioxide | February 2017 |
| sulfur dioxide | February 2017 |
| Noise | February 2017 |

ANNEXES

ANNEX A: MEASUREMENT DATA (REG-02, URE-01 PROJECTS)

REG-02 Project - Anaklia WWTP

Concentration of harmful substances in atmospheric
15.11.2016


| Samplin place coordinates | Noise DB | Dust mg/m ³ | Sulfur dioxide SO ₂ mg/m ³ | Nitrogen dioxide NO ₂ mg/m ³ | Carbon oxide CO mg/m ³ |
|------------------------------|-------------|---------------------------|---|---|---|
| Anaklia | 53.7 | 0.363 | <0.1 | 0.001 | 0.87 |
| X 0713640 Y 4697365 | | | | | |
| Enterprise area | 45.2 | 0.031 | <0.1 | <0.001 | 0.63 |
| X 0714137 Y 4697757 | | | | | |
| Ureki | 62.2 | 0.015 | <0.1 | 0.001 | 0.24 |
| X 0730237 Y 4650518 | | | | | |

Executors:
Main specialist
Main specialist
Specialist

Agreed:
Head Environmental Pollution
Monitoring Department

Kenia
O. Kenia
S.Khatsava
G. Morgoshia

M. Arabidze
M. Arabidze



Ure-01 Project

Concentration of harmful substances in atmospheric
15.11.2016

| Sampling place coordinates | Sample N | Noise DB | Concentration mg/m ³ | | | | | |
|--------------------------------------|----------|----------|---------------------------------|-----------------|----------------------------------|-------|--------------------------------|-----------------------------------|
| | | | Saturated hydrocarbons | Carbon oxide CO | Nitrogen dioxide NO ₂ | Dust | Sulfur dioxide SO ₂ | Hydrogen sulfide H ₂ S |
| Tvermagala X 0731286 Y 4643708 | 1 | 40,6 | 0 | 024 | <0,001 | 0,001 | <0,1 | <0,1 |
| | 2 | 66,4 | <0,1 | 1,07 | <0,001 | 0,002 | <0,1 | <0,1 |
| | 3 | 68,2 | <0,1 | 0,93 | 0,008 | 0,004 | <0,1 | <0,1 |
| | 4 | 60,0 | 1 | 0,87 | 0,003 | 0,011 | <0,1 | <0,1 |
| Laituri X 0734834 Y 4649812 | 1 | 40,1 | 0 | 0,15 | <0,001 | 0,002 | <0,1 | <0,1 |
| | 2 | 60,0 | <1 | 1,17 | 0,008 | 0,005 | <0,1 | <0,1 |
| | 3 | 59,2 | <1 | 1,02 | 0,066 | 0,003 | <0,1 | <0,1 |
| | 4 | 64,4 | <1 | 0,97 | 0,005 | 0,003 | <0,1 | <0,1 |
| Shekvetili X 0729536 Y 4646583 | 1 | 69,7 | <1 | 0,83 | 0,001 | 0,004 | <0,1 | <0,1 |
| | 2 | 73 | 1 | 1,21 | 0,007 | 0,005 | <0,1 | <0,1 |
| | 3 | 71,2 | 1 | 1,30 | 0,007 | 0,005 | <0,1 | <0,1 |
| | 4 | 74,9 | 1 | 0,53 | 0,006 | 0,051 | <0,1 | <0,1 |
| Kaprovani X 0729313 Y 4650077 | 1 | 54,3 | <1 | 0,03 | 0,001 | 0,007 | <0,1 | <0,1 |
| | 2 | 57,2 | <1 | 0,13 | 0,001 | 0,06 | <0,1 | <0,1 |
| | 3 | 56,2 | <1 | 0,12 | 0,001 | 0,03 | <0,1 | <0,1 |
| | 4 | 55,1 | 1 | 1,04 | 0,001 | 0,03 | <0,1 | <0,1 |

Executors:
Main specialist
Main specialist
Specialist

Agreed:
Head Environmental Pollution
Monitoring Department

Mezile
O. Kenia
S. Khatsava
G. Morgoshia

M. Arabidze



ANNEX B: PHOTOS OF SITES

Reg-02: Anaklia WWTP Site



Ure-01 project sites:



Ureki Well fields






Ureki Pumping Station

ANNEX C: Non-Compliance Notice

Non-Compliance Notice: Ure-01

Non-Compliance Notice

| | |
|--|------------------------------------|
| Project: USIIP | Non-compliance Notice UREKI |
| Contract No: URE-01 | |
| Contractor: PERI | |
| Reference: UREKI - UREKI PAMPING STATION | |
| This notice is to advice you, the prime Contractor, on the referenced Contract, of the following notice on environmental measures to be implemented urgently . | |
| <u>NON-COMPLIANCE IN UREKI</u> PAMPING STATION <ul style="list-style-type: none">- Proper place for Parking with relevant sign should be arranged- All construction materials should be properly segregated and stored adequately- Fuel/oil spill response items (sand, sawdust, special containers) should be equipped with relevant signs- Machinery and equipment should be in standard technical condition (no leakage of fuel and lubricants)- Use tarpaulins to cover during materials transportation- All workers (even personnel of subcontractor) should be equipped with complete PPE- Site internally should be arranged properly and cleaned regularly <div></div> | |



All these conditions have to be remedied within five days (by the 25 September 2016) by the prime Contractor (Peri).

Date of site visits: 15 - 16.09.16

Irakli Legashvili

EPTISA - Environment

Non-Compliance Notice

Project: USIIP

Contract No: URE-01

Contractor: PERI

Reference:

UREKI - WELLFIELD

Non-compliance Notice

UREKI

This notice is to advise you, the prime Contractor, on the referenced Contract, of the following notice on environmental measures to be implemented **urgently**.

NON-COMPLIANCE IN UREKI

WELLFIELD

- Fuel/oil spill response items (sand, sawdust, special containers) should available
- Fencing of the site is to be established
- Topsoil should be managed according to the SSEMP
- Machinery and equipment should be in standard technical condition (no leakage of fuel and lubricants)
- All containers of fuel and lubricants should be placed in a special place with roofing
- Bentonite waste should be managed according to SSEMP



All these conditions have to be remedied within five days (by the 25 September 2016) by the prime Contractor (Peri).

Date of site visits: 15 - 16.09.16

Irakli Legashvili

EPTISA - Environment

Non-Compliance Notice

| | |
|--|---|
| Project: USIIP | <p align="center">Non-compliance Notice</p> <p align="center">UREKI</p> |
| Contract No: URE-01 | |
| Contractor: PERI | |
| Reference: UREKI – NETWORK, RESERVOIR | |
| <p>This notice is to advice you, the prime Contractor, on the referenced Contract, of the following notice on environmental measures to be implemented urgently.</p> | |
| <p><u>NON-COMPLIANCE IN UREKI</u></p> <p>NETWORK</p> <ul style="list-style-type: none"> - Protect trees to avoid its damage during transmission line construction - Enough and high visible safety signs/tapes and trench side barriers around of deep open trenches should be installed to avoid accident of population - Walls of the deep trenches (>1.5m) should be strengthened by boards to avoid landfall of the soil and accidents - Accumulated waste soil should be removed from construction area and disposed in a proper place - Use tarpaulins to cover during materials transportation - Workers always should use complete PPE <div style="display: flex; flex-wrap: wrap;">       </div> | |



RESERVOIR

- Trees at the construction site should be protect to avoid its damage
- Site should be fenced from all sides and equipped with lockable gate with proper warning and information signs
- Proper warning and information signs should be arranged at the entrance, perimeter and inside of construction site
- Safety signs/tapes and trench side barriers should be installed around of excavation of reservoir
- Household Waste containers with relevant sign should be installed in proper place
- Hazardous Waste containers with relevant sign should be installed in proper place
- Workers always should use complete PPE
- Site internally should be arranged properly and cleaned regularly



All these conditions have to be remedied within five days (by the 20 November 2016) by the prime Contractor (Peri).

Date of site visits: 09.11-10.11.16

| | |
|---|--|
| Irakli Legashvili EPTISA - Environment | |
|---|--|

ANNEX D: IMPLEMENTATION REPORT ON THE ENVIRONMENTAL IMPACT ASSESSMENT (EIA) /INITIAL ENVIRONMENTAL EXAMINATION (IEE) MITIGATION REQUIREMENTS:

| Reference | Requirement | Action to date | Action required/comment |
|---|---|---------------------|---|
| Reg-02 Anaklia WWTP | | | |
| | Site internally should be arranged properly and cleaned regularly. All construction materials should be properly stored | Partially completed | Instruction is given to contractor to improve the situation |
| | Household and Hazardous Waste containers should be properly installed | Completed | Contractor improved the situation after the instructions given by the ES of UWSCG/USIIP |
| Ure-01 Well Fields | | | |
| | Bentonite waste should be managed according to SSEMP | Partially completed | Instruction is given to contractor to improve the situation |
| | Topsoil should be managed according to the SSEMP | Partially completed | Instruction is given to contractor to improve the situation |
| | Machinery and equipment should be in standard technical condition (no leakage of fuel and lubricants) | Partially completed | Instruction is given to contractor to improve the situation |
| | All containers of fuel and lubricants should be placed in a special place with roofing | Partially completed | Instruction is given to contractor to improve the situation |
| Ure-01 Pumping Station | | | |
| | Proper place for Parking with relevant sign should be arranged | Completed | No additional actions are required |
| | All construction materials should be properly segregated and stored adequately | Completed | No additional actions are required |
| | Fuel/oil spill response items (sand, sawdust, special containers) should be equipped with relevant signs | Completed | No additional actions are required |
| | Machinery and equipment should be in standard technical condition (no | Completed | No additional actions are required |

| | | | |
|--|--|---------------------|---|
| | leakage of fuel and lubricants) | | |
| | Use tarpaulins to cover during materials transportation | Partially Completed | Contractor to ensure construction materials to be covered by tarpaulins |
| | All workers (even personnel of subcontractor) should be equipped with complete PPE | Completed | No additional actions are required |
| | Site internally should be arranged properly and cleaned regularly | Completed | No additional actions are required |

Ure-01

Networks

| | | | |
|--|--|---------------|--|
| | Accumulated waste soil should be removed from construction area and disposed in a proper place | Completed | Contractor is given instruction to keep the standard |
| | Enough and high visible safety signs/tapes and trench side barriers around of deep open trenches should be installed to avoid accident of population | Completed | Contractor is given instruction to keep the standard |
| | Walls of the deep trenches (>1.5m) should be strengthened by boards to avoid landfall of the soil and accidents | Not Completed | The contractor was instructed several times to improve the situation |
| | Use tarpaulins to cover during materials transportation | Not Completed | The contractor was instructed several times to improve the situation |

ANNEX E: GRIEVANCE REDRESS MECHANISM

GRM System

75. For the effective implementation of a GRM system under the USIIP, UWSCG issued special order (#122) on 30 April 2014. The “Establishment of GRM within the Framework of the Asian Development Bank Funded Projects” signed by the head of UWSCG gives clear instructions to every involved stakeholder how to act when affected people are impacted by the project.
76. After issuance of the special order, a GRM was first set up by UWSCG under the REG-01 project of USIIP (operational since April, 2014) that includes rehabilitation of water supply system in Kutaisi. The GRM allows affected people to appeal any disagreeable decision, practice or activity arising from project implementation.
77. Any affected person can apply at a UWSCG local service centre through different ways, either by going to the service centre, sending a letter to the service centre, or calling a hotline. The operators of the service centre can respond by going directly to the affected person if they are disabled to get the written grievance from them.
78. During the first stage, complaints are discussed within two weeks of being received by the local service centre of UWSCG, based on the verbal or written complaint. In the first stage of grievance review and resolution, an authorized representative of the local service centre is responsible for ensuring the registration of the claim and its further processing. He/she engages in the grievance review and resolution process representatives (managers and environmental specialists) of Construction and Supervision Companies, and the representatives of UWSCG central office as required. At the local service centre, the affected person is provided with a queue number and then registers the grievance at the service desk.
79. The service centre operators, who are trained¹ in USIIP/Reg-01project, register all relevant grievances with support of an online task management system, which tracks information on the grievance review process and the responsible person. Moreover, the operators fill the ADB complaints log with the registered grievance that coincides with local internal forms. This electronic intranet system² allows the UWSCG Tbilisi Office to immediately see claims. Therefore, claims submitted to any regional service centre can be monitored by the Head of the Investment Projects Management Office (IPMO), as well as the Head of the Environmental and Resettlement Division, Maka Goderdzishvili.
80. When a grievance is solved positively in the first stage, the grievance is closed through an Agreement Protocol, which is reflected in the e-Document – Task Management System.
81. The grievance enters a second stage if it is not solved. In that case, the authorized representative of the local service centre will help the claimant prepare a package of grievance application documents for official submission to the Grievance Redress Committee (GRC). The package contains the following information:
 - Name, ID, address and contact details of the claimant
 - Description of the essence of the complaint

¹ UWSCG and Supervision Consultant (Eptisa) conducted trainings for service center operators covering general procedures of GRM functioning in order to ensure proper coordination of different departments.

²The **eDocument - Task Management System** was developed by LEPL Financial-Analytical Service of the Ministry of Finance of Georgia. It is an innovative electronic document and task management mechanism for electronically processing of documents. Used by almost all the major budgetary organizations in Georgia, the e-Document service offers an opportunity to manage, find, and track documents for information-intensive organizations.

- Supporting documents and evidences (photos, maps, drawings/sketches, conclusion of experts or any other documents confirming the claim)
 - Brief description of the actions proposed for the grievance resolution at the first stage and the reasons why these actions were denied
 - Minutes of meetings conducted at the first stage
- 82.** The GRC should make a decision within two weeks after the registration of the grievance. The GRC is staffed as follows: (i) Representative of self-government – the head of committee; (ii) 99. Director/ Manager of UWSCG service centre; (iii) Investments Project Management Division representative of the company; (iv) Representative of local authoritative NGO (according to the claim reference); (v) Stakeholders' female representative;(vi) Stakeholders' informal representative; and (vii) Heads of local municipalities.
- 83.** The GRC will review the package of grievance documents, set a date for a meeting with the claimant, discuss the claim at the meeting, and set up a plan for further actions (actions, responsible persons, schedule etc.). Upon the resolution of the case, the GRC will prepare a brief resume and protocol and the protocol signed by complainant and all parties will be registered in a grievance log.
- 84.** There is a third stage in case there is a failure to resolve the grievance. In this case, GRC will help the claimant to prepare the documents for submission to the Rayon (municipal) court. They can also apply to ADB at the address below:
- *Complaints Receiving Officer, Accountability Mechanism*
 - *Asian Development Bank Headquarters*
 - *6 ADB Avenue, Mandaluyong City 1550, Philippines*
 - *Email: amcro@adb.org, Fax +63-2-636-2086*

ANNEX F: Weekly Environmental Monitoring Forms

თარიღი/DATA

ყოველკვირეული გარემოსდაცვითი მონიტორინგი
Weekly Environmental Monitoring

| კონტრაქტის #: | | | | ზედამხედველი: Eptisa | | |
|------------------|--|------------|------------|--------------------------|---------------------|------------------|
| Contract#: | | | | Supervisor: Eptisa | | |
| პროექტი/ობიექტი: | | | | კონტრაქტორი: | | |
| Project/Site: | | | | Contractor: | | |
| N | | კი/ yes | არა/ no | ნაწილობრივ/ Partially | არ ეხება/ N.A | შენიშვნა/Comment |
| 1 | სამშენებლო ტერიტორიის სრულად შემოღობვა Adequate fencing of construction area from all sides | | | | | |
| 2 | საკეტიანი შესასვლელი კარის მოწყობა, სტანდარტული გამაფრთხილებელი და საინფორმაციო ნიშნებით აღჭურვა Arrangement of lockable gate with standard warning and information signs | | | | | |
| 3 | სამშენებლო ტერიტორიაზე და პერიმეტრზე სტანდარტული გამაფრთხილებელი და საინფორმაციო ნიშნების განთავსება Placement of standard warning and information signs at the perimeter and inside of construction area | | | | | |
| 4 | ღიად დატოვებულ თხრილებზე და ჭეხილზე უსაფრთხოების ლენტების, ბარიერების და გამაფრთხილებელი ნიშნების განთავსება Installation of safety signs/tapes and trench side barriers around of open trenches | | | | | |
| 5 | 1,5 მეტრზე მეტი სიღრმის ტრანშეებში კედლების გამაგრება Strengthening of walls of the deep trenches (>1.5m) by boards | | | | | |
| 6 | დასახლებულ ადგილებში ღიად დატოვებულ თხრილებზე დროებითი გადასასვლელების მოწყობა Installation of proper temporary wooden/metal walkways/planks across open trenches in settlement areas | | | | | |
| 7 | სამშენებლო ტერიტორიაზე, სამუშაოების ზონაში არსებული ხეების შემორაგვა (დაზიანების თავიდან აცილების მიზნით) Protect all trees nearby construction zone to avoid its damage | | | | | |
| 8 | ექსკავაციის დროს, ნიადაგის ნაყოფიერი (დაახლოებით 20-30 სმ სისქის) ფენის მოხსნა და განცალკევებულად გროვებად შენახვა Removal of top soil (about 30 cm depth) and separately storing in appropriate place | | | | | |

| | | | | | | |
|----|---|--|--|--|--|--|
| 9 | სამშენებლო ნარჩენების და ჭარბი ნარჩენი გრუნტის დროული გატანა/განთავსება Timely removal/disposal of construction waste and surplus waste soil | | | | | |
| 10 | სამშენებლო ტერიტორიის ღამის საათებში განათება Provide adequate lighting of construction territory | | | | | |
| 11 | სამშენებლო ტერიტორიის შესაბამისად მოწყობა მასალების და მოწყობილობების და დანადგარების ორგანიზებულად განთავსება (საჭიროებიდან გამომდინარე) Proper arrangement of construction site and segregation/storing of construction materials/equipment (bring the material when required) | | | | | |
| 12 | სამშენებლო ტერიტორიაზე საწვავის და საპოხი მასალების დაღვრის შედეგების სალიკვიდაციო ნაკრების (ქვიშა, ნახერხი, მცირე ზომის ავზი და სხვა) ხელმისაწვდომლობა Availability of proper fuel/oil spill response items (sand, sawdust, special containers) at the construction site | | | | | |
| 13 | საწვავის და საპოხი მასალების კონტეინერების განთავსება მხოლოდ სპეციალურ გადახურულ ადგილებში Allocation of fuel and lubricants containers at the special dedicated place (with roofing and concrete flooring) | | | | | |
| 14 | სამშენებლო ტერიტორიაზე საყოფაცხოვრებო ნარჩენებისთვის თავსახურიანი კონტეინერის განთავსება და შესაბამისი წარწერებით აღჭურვა (მაგ. "HOUSEHOLD WASTE") Placement of proper Household Waste container at the special dedicated place with relevant indication signs (for example "Household Waste") | | | | | |
| 15 | სამშენებლო ტერიტორიაზე საშიფათო ნარჩენებისთვის თავსახურიანი კონტეინერის განთავსება და შესაბამისი წარწერებით აღჭურვა (მაგ. "HAZARDOUS WASTE") Placement of proper Hazardous Waste container at the special dedicated places with relevant indication signs (for example "Hazardous Waste") | | | | | |
| 16 | სამშენებლო ტერიტორიაზე ან მის გარეთ ტრანსპორტისთვის პარკირების ადგილის მოწყობა და ნიშნით აღჭურვა (მაგ. P) Arrangement of proper Parking area at the adequate place inside/outside of construction territory with relevant sign (for example P) | | | | | |
| 17 | სამშენებლო მასალების და ნარჩენების ტრანსპორტირების დროს ავტოტრანსპორტის სპეციალური საფარით (ბრეზენტით, ტენტითდასხვა) აღჭურვა Use tarpaulins cover during materials transportation | | | | | |
| 18 | საჭიროებიდან გამომდინარე მტვრის წარმოქმნის პრევენცია Dust generation prevention activities (when needed) | | | | | |

| | | | | | | |
|--|--|------------------------------------|--|--|--|--|
| 19 | <p>მუშების და ინჟინერ-ტექნიკური პერსონალის მიერ ინდივიდუალური დაცვის საშუალებების (ჩაფხუტი, ჟილეტი, ხელთათმანი, ჩექმები, დამცავი სათვალე, და სხვა) სრულად გამოყენება</p> <p>Ensure that all workers are provided with and use appropriate Personal Protective Equipment - helmets, hand gloves, boots, masks, safety belts</p> | | | | | |
| 20 | <p>სიმაღლეზე მუშაობის დროს სპეციალური დამცავი აღჭურვილობის გამოყენება</p> <p>Use of special safety equipment during working at heights</p> | | | | | |
| 21 | <p>სამშენებლო ტერიტორიის მუდმივად დალაგება და დასუფთავება</p> <p>Regularly cleaning of construction territory</p> | | | | | |
| <p>ობიექტის გარემოს დაცვაზე პასუხისმგებელი პირი (კონტრაქტორი)/Staff responsible for environment/safety at the site (contractor)</p> | | <p>სახელი:</p> <p>Name:</p> | | | <p>ხელმოწერა/</p> <p>Signature:</p> | |
| <p>მშენებლობის ინსპექტორი (ზედამხედველი)/Construction site inspector (supervisor)</p> | | <p>სახელი:</p> <p>Name:</p> | | | <p>ხელმოწერა/</p> <p>Signature:</p> | |
| <p>გარემოს დაცვის სპეციალისტი (კონტრაქტორი)/Environmental Specialist (contractor)</p> | | <p>სახელი:</p> <p>Name:</p> | | | <p>ხელმოწერა/</p> <p>Signature:</p> | |

შენიშვნა/Comment:

შესაბამისი ფოტომასალა/Photo Materials: