

**China: Guangdong Compulsory Education  
Project (P154621)**

**Abbreviated Resettlement Plan**

**Department of Education of Guangdong Province**

**Sun Yat-sen University**

**April 2016 · Guangzhou, China**



# Table of Contents

Table of Contents .....	1
1. Background .....	1
1.1 Project Profile .....	1
1.2 Social and Economic Situation of Wengyuan County.....	3
1.3 Social and Economic Situation of Huilai County .....	4
1.4 Social Investigation Process of Temporary Resettlement .....	4
1.5 Compilation Basis .....	6
2 Social and Economic Situation of Affected Population in Project County .....	7
2.1 Basic Statistics of Affected Population .....	7
2.2 Statistics on Affected Households' Economic Status .....	9
2.3 Housing Occupied Situation .....	10
2.4 Comparison and Analysis of Rent and Economic Income of Affected Families .....	12
3. Effect of Temporary Resettlement .....	13
3.1 Main Influencing Factors .....	13
3.2 The Complaint of Influenced People .....	14
4. Temporary Resettlement Solution .....	16
4.1 General Requirement of Temporary Resettlement .....	16
4.2 Concrete Resettlement Place.....	17
4.3 Evaluation to the Existing Scheme .....	18
5. Resettlement Fund and Budget Management.....	20
5.1 Fund Resource.....	20
5.2 The Management of Project Fund.....	20
5.3 Budget.....	21
6. Public Participation .....	23
6.1 Participatory Evaluation.....	23
6.2 The Public Participation in the Process of Project Construction.....	23
7. Complaint Channel .....	25
Annex1 Immigrant Resettlement Compensation Standards.....	29
Annex2 The Spot of Publish of Temporary Resettlement Framework in Wengyuan County .....	36
Annex3 Opinions for Temporary Resettlement of Demolition of the Teachers' Transitional Dormitories Constriction Project .....	38
Annex4 Temporary Resettlement Regulations.....	41

# **1. Background**

## **1.1 Project Profile**

### **1.1.1 Project Context**

As the southernmost part of Chinese Mainland in immediate vicinity of Hong Kong and Macau, Guangdong Province has topped China for several consecutive years in respect of comprehensive economic strength. However, the imbalance between economic development and the development of compulsory education still exists in Guangdong Province on the whole. On the one hand, Guangdong puts poor investment in compulsory education, and the public fund expenditure in students' average budget for compulsory education is below national average, thus lagging behind most provinces in China; on the other hand, imbalance exists between developed and underdeveloped areas and between urban and rural areas, especially remote mountainous areas throughout the province in terms of development of compulsory education. Take the statistical data of year 2014 for example: The annual gross domestic production (GDP) of Guangdong Province amounted to 6780.985 billion Yuan, of which the total GDP of the eastern, western and northern parts of Guangdong accounted for 22.8%, i.e. East Guangdong for 7.5%, West Guangdong for 8.5%, and North Guangdong for 6.8%. In view of the relatively low fiscal revenue, it seems particularly difficult to achieve balanced educational development between underdeveloped and developed areas.

Along with the rapid economic development at the Pearl River Delta in recent years, the gaps between the Delta and the eastern, western and northern parts of Guangdong have widened, which aggravates such issues as the inadequate investment in compulsory education, the backward construction of basic education facilities, the poor overall quality of teaching staff, and the widening of gap between urban and rural areas in respect of the development of compulsory education. According to the statistical indicators of compulsory education, the 16 counties (cities/districts, hereafter referred to as "weak counties of compulsory education") in the eastern, western and northern parts of Guangdong, i.e. Chaoyang, Wengyuan, Wuhua, Haifeng, Lufeng, Suixi, Lianjiang, Leizhou, Wuchuan, Dianbai, Huazhou, Chaoan, Huilai,

Puning, Jiexi and Luoding, are considered relatively weak in compulsory education in Guangdong Province.

In the national context of "intensifying comprehensive educational reform", Guangdong Province proposed the World Bank Loan Guangdong Compulsory Education Project based on its actual conditions in the principle of "reform innovation, balanced development, overall coordination and focusing on intelligence introduction" so as to better promote the balanced development of compulsory education in weak counties of compulsory education in Guangdong Province as well as in order to further alleviate the imbalance of development of compulsory education in Guangdong Province, and to address such issues as the lack of high-quality educational resources, the failure of certain schools to meet standards, the outdated education ideas and means, the unsatisfactory overall quality of teaching staff and the inadequate compulsory education support for special groups in weak counties of compulsory education in Guangdong Province.

### **1.1.2 Project Description**

Building of this project include 8 subprojects, which respectively are the quality education resources sharing pilot subproject, school standard building pilot subproject, quality-oriented education experiment pilot subproject, teacher resources optimal allocation pilot subproject, special groups education guarantee pilot subproject, education quality management pilot subproject, project management and ability enhancement pilot subproject and study on management system of social donation for schools and relevant pilot subproject. The 8 subprojects also have 22 items, which can be divided into the "hardware items" mainly engaged in capital construction and equipment procurement and the "software items" aiming at promoting the compulsory education connotation development in accordance with the project natures. Among the 22 subprojects, the 5 "hardware items" mainly include the "Ban Ban Tong (BBT)" teaching platform and maintenance of quality education resources, online classroom teaching point and its maintenance, standardized classrooms, standardized mobile laboratories and teachers' transitional dormitories in the remote rural areas, and the remaining 17 ones are the "software items".

### **1.1.3 The Necessity of Establishing Abbreviated Resettlement Plan**

According to World Bank's Policy OP4.12, "unless otherwise specified, all projects that will lead to involuntary resettlement should establish Resettlement Plan or a brief version; if the impact on the entire immigrant population is relatively light, or the number of migrants is less than 200, a brief migration settlement plan agreed by the borrowers also works." Based on the field work of the assessment team, this project only has two project county, Wengyuan County and Huilai County, need for resettlement. Wengyuan County has two project schools, Jiangwei central primary school and Bazai Town central primary school. Huilai County has one project school, Xian'an central primary school. Teachers living there should be temporarily resettlement during the course of teachers' turnover dormitories' construction. According to the small number of affected populations this project has, the project has small negative impact. According to the relevant regulations and requirements, evaluate the temporary resettlement activities brought by the project, establish a brief migration settlement plan.

### **1.2 Social and Economic Situation of Wengyuan County**

Wengyuan County is located in the southeast of Shaoguan city, mainly with mountainous region and basin. As a half hilly region, it is surrounded by hills. The hills rolled up and down, away to the far-off mountains. Mountains are mostly from the northeast to the Southwest and the terrain tilts from the northeast to the southwest. At the end of 2015, Wengyuan County's household population is 400,408 and total area is 2175 square kilometers, administering 7 towns, 1 Chang, 156 villages (work area) committees. In 2015, the county's GDP achieved 9.01 billion yuan. At the end of 2015, the county has 48 kindergartens, 369 classes, 14088 children in kindergartens, 1093 kindergarten faculties; 57 primary schools, 645 classes, 25100 students in primary schools, 1590 primary school faculties, 1492 full-time teachers; 15 junior high schools, 239 classes, 2 full secondary schools, 1 senior high school, 120 classes, 1375 middle school faculties, 1270 full-time teachers, 16388 middle school students (6284 senior high school students); 1 special school, 8 classes, 83 students in the special school, 5 special school faculties.

### **1.3 Social and Economic Situation of Huilai County**

As an important coastal county as well as a maritime traffic door of Xieyang City, Huilai County is located in the coastal area of eastern Guangdong Province, and bordered by Shantou City to the east, Lufeng City to the west, Puning City to the north, and South China Sea to the south. It has a land area of 1253 square kilometers, sea area of 7689 square kilometers and a coastline of 109.5 kilometers. The county has 16 towns (including the Great South China Sea petrochemical industrial zone) with 1.422 million registered population in addition to more than 200,000 overseas Chinese living abroad and compatriots from Hong Kong, Macao and Taiwan. In 2015, the annual regional GDP totaled 24.233 billion yuan, and the fiscal revenue is 4.432 billion yuan, of which the local public budget revenue is 641 million yuan. The county has 8 complete middle schools, 18 junior high schools, 14 nine-year schools, 280 primary schools, 8 teaching stations and 178 independent kindergartens (45 public kindergartens, 133 private kindergartens). Meanwhile, it has 171092 students in schools (103387 students in primary schools, 43749 students in junior high schools, 23956 students in high schools), 39099 children in kindergartens and 12896 full-time teachers, including 6138 full-time teachers in primary schools, 3040 in junior high schools and 1585 in normal high school.

### **1.4 Social Investigation Process of Temporary Resettlement**

#### **1.4.1 Temporary Resettlement Profile**

According to the field survey and the data submitted by the project school, there are two project schools in Wengyuan County need to carry out temporary resettlement. Specifically, Jiangwei Town central primary school involves two families of teachers, while Bazai Town central primary school involves ten affected residents. Huilai County has 16 residents, including 42 people, in one project school need to be temporarily settled. So far, project schools have informed the project profile and its temporary placement to the affected population, issued temporary resettlement measures, which is already agreed by all the affected people on the basis of broadly canvassing the views of them. All in all, the temporary resettlement will be carried out smoothly, and it will not affect the normal development of the project nor affect the normal life of the inhabitants.

### **1.4.2 Social Survey Methods of Temporary Resettlement**

To understand temporary resettlement status of the affected population, including their family population, family income, family expenses, occupation, the views and attitudes of the temporary placement program, etc. Using questionnaires, seminars, interviews, field visits, public notice etc., the evaluation team undertook the participatory assessment to thoroughly investigate the basic situation of the affected populations.

### **1.4.3 Investigation Process Outlined of Temporary Resettlement**

From the whole process of investigation, the evaluation group mainly carried out the work in three stages. The first stage was data collection, understood the basic situation of Wengyuan County and Huilai County; the second stage was field surveys, confirmed the number and demographic characteristics of the affected population, solicited their opinions and suggestions on the temporary resettlement; the last stage was repeatedly confirmation of the information provided by project schools, carried out a supplementary investigation, repeatedly confirmed questionnaires' authenticity and comprehensiveness, in the meanwhile, informed the affected population through the publicity of temporary placement programs to learn their interests demands.

### **1.4.4 Key Concerns of Temporary Resettlement Investigation**

The evaluation team believes that four key concerns of temporary resettlement investigation in the construction need to be focused. Firstly, define the number of affected population, which is related to the preparation and implementation of the following job. Reduce immigration as much as possible, if immigration can't be avoided, take relevant measures to reduce the impact on their normal life. Secondly, learn the basic situation of the affected families, including demographic characteristics, family income, family expenses, family personnel occupation, etc. Thirdly, pay attention to the formulation of the temporary resettlement scheme, and assess the feasibility of it. Fourthly, understand affected people's attitudes and opinions on the temporary resettlement, evaluate their right to information and participation in project construction.



## **1.5 Compilation Basis**

[1] World Bank: Operation Policy OP4.12 “Involuntary Resettlement” and Relevant Attachments, January 1, 2002.

[2] World Bank: Operation Policy BP4.12 “Involuntary Resettlement” and Relevant Attachments, January 1, 2002.

[3] State Council of the People's Republic of China: Regulation on the Expropriation of Building on State-owned Land and Compensation, January 21, 2011.

[4] Ministry of Housing and Urban-Rural Development of the People's Republic of China: Evaluation on the Housing Expropriation on State-owned Land, June 3, 2011.

[5] Shaoguan Municipal People's Government: Administrative Measures of Shaoguan Municipality on Dismantlement and Removal of Housing in Urban Areas, December 21, 2007.

[6] Jieyang Municipal People's Government: Administrative Measures of Jieyang Municipality on Dismantlement and Removal of Housing in Urban Areas, December 27, 2002.

## **2 Social and Economic Situation of Affected Population in Project County**

### **2.1 Basic Statistics of Affected Population**

#### **2.1.1 Project Schools of Affected Population Profile**

There are two project schools in Wengyuan County, namely Jiangwei Town central primary school and Bazai Town central primary school, need to carry out temporary resettlement. These two schools have a large number of students and teachers who originally in rural primary schools, the original teachers' dormitories are unable to meet the needs, so they apply the project of teachers' turn over dormitories. There are 1569 compulsory education students, 87 full-time teachers as well as existing teacher turnover dormitory area of 1060 square meters in Jiangwei Town central primary school, where still needs 1050 square meters more. Bazai Town central primary school has 1225 students, 76 full-time teachers, existing teacher turnover dormitory area of 380 square meters and needs 1035 square meters more. Besides, Huilai County Xian'an central primary school has 633 students and 29 teachers, it needs 1120 square meters more to build teachers' dormitories.

#### **2.1.2 Affected Population Profile**

According to the questionnaire and interview survey, affected population profile is as follows. From the school distribution, there are three project schools need to carry out temporary resettlement. From the total number of people, there are 37 males and 30 females out of 67 people. In addition, according to the survey, families in Wengyuan County have other houses to live. <sup>1</sup>From the length of residence, there are 5 teachers' households in Jiangwei Town central primary school, 10 in Bazai Town central primary school and 16 in Xian'an central primary school out of total 31 households are permanent resident population,<sup>2</sup> the rest are non-resident population

---

<sup>1</sup> These teachers have their houses in the county, but due to the distance, they're used to live in school, which is more convenient to work.

<sup>2</sup> The same household is not necessarily one family, single individual teachers may share one dormitory. In fact, affected population are 14 households' teachers and their family members. Jiangwei Town central primary school involves 4 households. There were only two teachers' families in the old houses where were planned to demolish.

who only take breaks at noon in their dormitories.

**Table 2-1 Affected population profile**

Project school	The total number of households (Unit:household)	The total number of people (Unit: person)	Males (Unit: person)	Females (Unit: person)
Jiangwei Town central primary school	5	7	5	2
Bazai Town central primary school	10	18	10	8
Xian'an central primary school	16	42	22	20
Total	31	67	37	30

With age, the oldest is Mr. Chen, who is a 76 years old retired teacher of Jiangwei Town central primary school.

Take Bazai Town central primary school for example, the age of affected population is in the following table.

**Table 2-2 Age structure of temporary resettlement population in Bazai Town central primary school (Unit: person)**

0-10 years old	11-20 years old	21-30 years old	31-40 years old	41-50 years old	Over the age of 50
0	1	6	3	5	3

Educational level covers four levels of middle school, high school, college and university. Undergraduates reached account for more than half of the total number, this shows the affected people has a high level of education. See details in the table below.

---

Mr. Chen as an elderly man, he doesn't want to live off campus, so the school arranged Mr. and Mrs. Ye to rent a house outside campus and let Mr. Chen live into the Yes' dormitory. In addition, Mr. Liu lived in Mr. He's dormitory, so Mr. He asked the school to provide him with a dormitory, while Mr. Liu rents a house outside paid by the school. Meanwhile, Mr. Wu who took a break at noon in the old dormitory was arranged to other dormitories to take breaks at noon.

**Table 2-3 Educational level of temporary resettlement population in Bazai Town**  
(Unit: person)

Middle school	High school, Technical secondary school	Junior college	University
1	2	2	13

## 2.2 Statistics on Affected Households' Economic Status

### 2.2.1 Family Members' Occupation

Family members' occupation is closely related to family income. In order to assess the economic situation of the affected families, it is necessary to understand their professional distribution. According to the survey, the main affected groups are teachers. Take Wengyuan County for example, in the affected 15 households, the main occupation of the total 25 people is teacher, other occupations are less. See details in the table below.

**Table 2-4 Family members' occupation of temporary resettlement population in Wengyuan County (Unit: person)**

School	Teacher	Other
Jiangwei Town central primary school	7	0
Bazai Town central primary school	15	3
Total	22	3

The evaluation team was informed in the field research that the affected population is teachers' family. At least one of the family members is a teacher. Mainly of them are not retired, while only one is a retired teacher.

### 2.2.2 Family Income

The level of family income will affect the consumption ability of the affected people, relate to their ability to pay for the rent in the temporary resettlement process. From the survey data, household monthly income is more than 4500 yuan. Take one family in Jiangwei Town central primary school for example, the couple live together, the husband retired, his wife still works in school, and the family income reached 9000 yuan. This income level has reached above the average local income levels.

### **2.2.3 Household Spending**

Household spending is an important indicator to measure a household's consumption level. From the survey data, the monthly household spending of affected people in Jiangwei Town central primary school is more than 4000 yuan, the monthly household spending of affected people in Bazai Town central primary school is more than 3000 yuan and about 3500 yuan in Xian'an central primary school. Based on comparison and analysis of family income and household spending, affected families' balances are over one thousand yuan per month.

## **2.3 Housing Occupied Situation**

In order to understand the status of temporary housing occupancy of the affected people in Wengyuan County and Huilai County, the assessment team did a field-work of temporary occupied housing area and housing structure.

### **2.3.1 Temporary Occupied Housing Area**

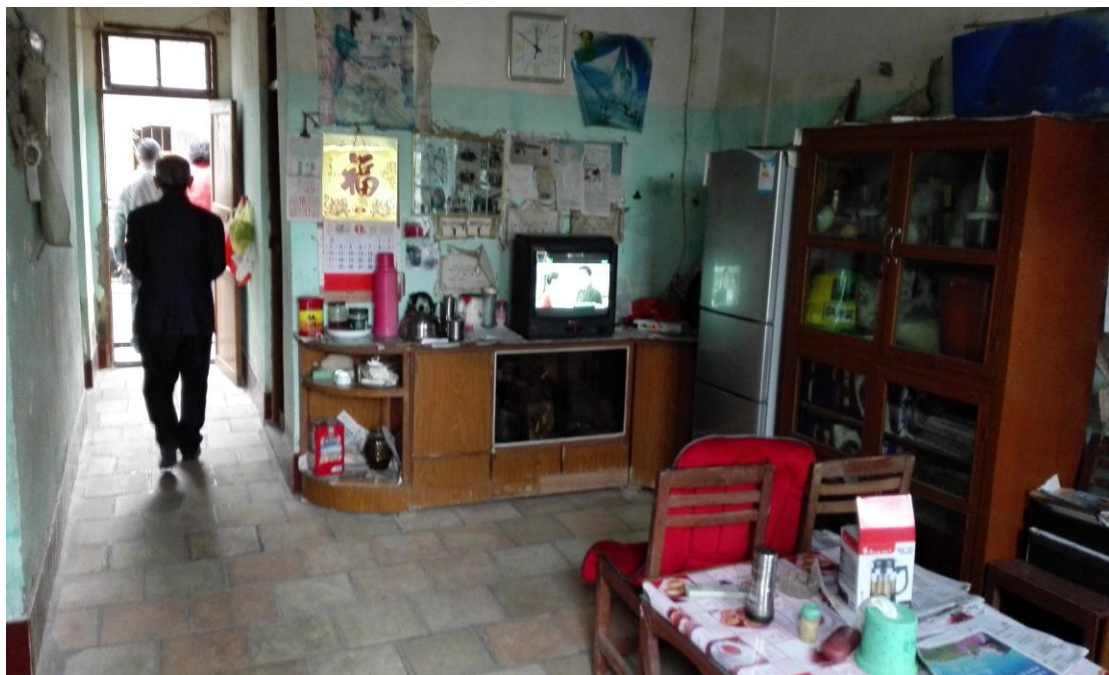
According to the research results, occupied houses were built in the last century, and for teachers to live. Due to disrepair, these houses are unfavorable for people and need urgent renovation. Occupied old dormitories in the two schools of Wengyuan County are small and have small number of teachers living in there. For teachers whose houses were occupied, they will be arranged in new settlements temporarily by the school, and the new settlements will meet their needs. Details refer to the comparison table of occupied and resettlement area in Jiangwei Town central primary school. Xian'an central primary school has two buildings of teacher's dormitories of totally 504 square meters dividing into 28 rooms, each of which is about 18 square meters. These two buildings now have 16 households, while they were built in 1985 and already have many water seepage and leakage problems.

**Table 2-5 Comparison of occupied and resettlement area in Jiangwei Town central primary school**

Name	Original living area (unit: square meter)	Resettlement area (unit: square meter)
Mr. and Mrs. Ye	30	80
The Chen Sishus	150	60
Mr. Liu	120	60
Mr. He	30	15

### 2.3.2 Occupied Housing Structure

Houses of project schools in Wenyuan County need to be dismantled are teachers' dormitories, which were built in the last century. They are collective housing, the ownership for the school. Take Jiangwei Town central primary school in Wengyuan County for example, teachers' brick houses need to be dismantled are dilapidate, leaks even occur on rainy days. By interview, the retired teacher living there said, they hope that old house renovation could be funded by the school, so they are very supportive of the project.



**Figure2-1 Internal housing structure of the affected people in Jiangwei Town central primary school**



Figure2-2 External housing structure of the affected people in Jiangwei Town central primary school

## **2.4 Comparison and Analysis of Rent and Economic Income of Affected Families**

According to the local price level, generally no more than 500 yuan can meet the rental needs. From the previous analysis, family monthly income is more than 4500 yuan, minus the monthly household spending, balance is more than \$1000 a month. Therefore, even if the affected people choose to rent a house outside and pay the rent by themselves, their economic situation can meet this demand, this will not bring too much negative impact on the temporary resettlement of the family. <sup>3</sup>From the general level of local social economy and family income, the negative impact on the affected families' daily life is small if they pay one year rent, this will not bring economic burden.

---

<sup>3</sup> In fact, the rent charge is all paid by the school.

### **3. Effect of Temporary Resettlement**

#### **3.1 Main Influencing Factors**

Temporary resettlement is needed in two project schools in Wengyuan County and one project school in Huilai County for teachers' families living in the old teacher's dormitories where were planned to demolish. According to the experience of participatory assessments and similar projects, the evaluation team believes main influencing factors of temporary resettlement are as follows.

Firstly, looking for temporary housing. Previously living in the teachers' old dormitories where were planned to demolish, some of these affected teachers have lived there for more than ten years. Temporary resettlement for them is needed to demolish old dormitories. These affected teachers don't own any other houses in school, therefore, find a suitable temporary housing become the core issue of temporary resettlement.

Secondly, the influence of new settlements on daily life. In accordance with the provisions of the temporary resettlement, all the affected teachers will be arranged in new settlements by the school. The new settlements selection should be considered in combination with these teachers' work and daily life. If the new settlements are far away, these affected teachers' life won't be convenient, their living facilities, such as water supply, power supply, etc., can't guarantee of normal daily life, which will bring many negative effects to them.

Thirdly, resettlement costs. Moving away from the original address relates to rent for new residences, relocation costs and other issues. Although the cost will not bring great negative impact to the affected group, but they still very concerned about the problem.

Fourthly, temporary resettlement period. Different the length of temporary resettlement period, so will the impact on the affected group. If the period is too long, it will bring many challenges to the recovery of the affected group's daily life. At the forum, teachers have expressed the hope to shorten the temporary placement period.

Lastly, distribution of the new houses. New houses refer to the teachers' turnover dormitories. The affected teachers hope that the new housing allocation will be given priority to their living needs.

All in all, from the overall benefit of the affected group, the negative impact of



the temporary resettlement is very small.

### **3.2 The Complaint of Influenced People**

Firstly, solve the problem of temporary resettlement housing. It will be better for school to coordinate and set up temporary resettlement work group to solve the problem of temporary housing problem. Two schools of Wengyuan County and one school in Huilai County have solve teachers' temporary resettlement problems from the school's coordination angel, publish temporary resettlement framework and guarantee influenced teachers' right to know and participation through symposium, publish as well as other methods. Then get their consensus.

Secondly, resettlement in the vicinity. One principle of temporary resettlement is to maintain original living condition and social relationship. Influenced teachers hope they can be resettled in the school or residential areas nearby school. Two project schools in Wengyuan county have made decision from teachers' actual requirement that arranged them live in school's dormitory or idle rooms. Such as Bazai Town central primary school in Wengyuan county has arranged 10 teachers' households to live in the multiple-use building temporarily.

Thirdly, schools should in charge of resettlement cost. Influenced teachers hope that school will coordinate their resettlement cost problem. From the details of temporary resettlement framework which published by two project schools in Wengyuan County the requirement has been satisfied. Take Jiangwei township central school in Wengyuan county as an example, influenced family YeXidong and XuMeiqiu have moved to the 301 room of family dormitory of China Agriculture Bank in Jiangwei township, school has offered 350 RMB per month as rent cost to help this couple solve housing rent problem.

Fourthly, try to best to reduce interference of normal life. As to school's planning the construction period of project is 180 days, so the period length of temporary resettlement is no more than 1 year. Influenced teachers reflected that they can bear any impacts such as removal, noisy, dust pollution to support school's temporary resettlement framework while they also hope the interference for their normal living could be reduced during the construction period.

Fifthly, complaints of rational distribution of new housing. In the process of participatory evaluation the influenced teachers has also put forward the school

should consider the housing requirement previously after the new housing constructed, and school should make fair, reasonable distribution methods.

## **4. Temporary Resettlement Solution**

### **4.1 General Requirement of Temporary Resettlement**

The operation policy OP4.12 of the World Bank has put forward general requirement for temporary resettlement, including the following points:

(1) Try to make the time of transition period short. the relative property compensation should be afforded to residents before they influenced, then convenient for them to rebuilt new housing, relocate or replace their fixed assets. The measures for reducing impacts of resettlement should be implemented before actual resettlement start. The support should be given to the immigrant who didn't get replaced housing during the transition period, those immigrant who get the replaced housing should be given guidance.

(2) It should consult with immigrants and accept their requirements and suggestions in the process of making immigrant resettlement plan. The immigrant resettlement plan should be published in easy understandable way for immigrants.

(3) The original community service level and available resources should be maintained or offered after resettled.

(4) Borrowers should in charge of offering all expenses which related with land expropriation and resettlement. The requirement of property and material should be fully satisfied in the process of resettlement and convalescence.

(5) Immigrant resettlement plan includes suitable institutional arrangement to ensure the immigrant resettlement and restoration measures can be designed planed and implemented in timely and effective way.

(6) Arrange effective internal and external monitoring mechanism suitably to monitor the implementation of immigrant resettlement measures.

(7) formulate necessary appeal way and provide details of complaint procedures for immigrants.

According to the documents of the World Bank, assessment team has put forward the general requirements of temporal replacement works which combined with the

actual situation of Wengyuan county and Huilai county, including the following points:

Firstly, the work of propaganda and publicity should be well done to make sure influenced people's right to know and participation.

Secondly, seeking influenced people's advice and suggestions widely. The influenced people's interest appeal should be accepted during the temporary resettlement making, try to satisfied their requirement for temporary resettlement.

Thirdly, the principle of resettlement in the vicinity areas. Try to relocate the temporary resettlement place in the vicinity of school or in the school, on one hand it convenient for teachers' teaching work, on the other hand it can avoid damaging the teachers' original social networks.

Fourthly, establishing temporary resettlement work team. The principal and logistics officer are recommended to formulate the temporary work team to solve the problems during the temporary resettlement period, help the influenced teachers to overcome the difficulties and dispel their worries.

## **4.2 Concrete Resettlement Place**

At present, according to the project processing situation the two project schools in Wengyuan county and one project school in Huilai county have formulated temporary resettlement solution after accepted the teachers' suggestions and advice widely. Concrete resettlement solution can refer to the attachment.

The central primary school in Jiangwei county includes two categories, one is teachers' residential building and dormitory building, another is residential community nearby the school. As to first one, arrangement of influenced teachers be coordinated by school and teachers don't need to afford any expense. As to the influenced teacher who arranged to the residential community outside the school, the school in charge of offering rent and the teacher don't need to afford any expense. While temporary resettlement place of central primary schools in Bazai county are all school's building. 10 influenced teachers' families relocated to the Yumei building in the school, one is to utilize idle resource to solve teachers' temporary resettlement

problems, another is avoid the rent expense due to temporary resettlement. And it's byalso conform to the principle of resettlement in the vicinity areas.

Xian'an central primary school in Huilai county has arranged 16 influenced tenants temporarily by the means of off-school renting. The school has delivered informed consent forms to the tenants and the representatives of tenants have sighed and put their fingerprint on the forms.

## **4.3 Evaluation to the Existing Scheme**

### **4.3.1 Evaluation to the Scheme**

Assessment team believe, the two project schools in Wengyuan county and one school in Huilai county have accepted influenced people's suggestions and advice, listening their requirement for benefits and guarantee their right to know and participate in the process of making temporary resettlement scheme, so it possess wide social participate foundation. From the details of the scheme, the temporary replacement work is conform to the requirement of the World Bank about the policy of immigrant resettlement. From the public opinions of influenced teachers group the scheme has been achieved consistent agreement and support. Therefore, the temporary resettlement scheme which made by the two project schools in Wengyuan county is feasible to operate, so the temporary resettlement work can be accord with the scheme.

### **4.3.2 Suggestion**

As to the temporary resettlement scheme which made by the two project schools in Wengyuan county and one school in Huilai county, assessment group has found some problems associated with participatory evaluation, then fut forward some suggestions.

Firstly, the supplementary instruction of the temporary resettlement period which has not been put forward and the problem of housing distribution after temporary resettlement should be explained.so assessment group think it's necessary to explain these two points briefly in the scheme.

Secondly, as to the removal charge in the temporary resettlement scheme should be explained. Influenced teacher group remove from the original location to new resettlement place can incur fees, as to this kind fees should be explained to definite the main bearer for the charge.

## **5. Resettlement Fund and Budget Management**

### **5.1 Fund Resource**

According to the regulation of the World Bank, borrower is in charge of raise costs of land expropriation and immigrant resettlement compensation. Any immigrant resettlement plan which is in line with the immigrant policy scheme should include estimated costs and budget. The budget of immigrant resettlement plan should not include unforeseen expense, it's usually 10% general budget of the estimated immigrant replacement, or more to satisfied unforeseen immigrant expense.

Generally speaking, temporary resettlement cost include removal fees, temporary resettlement fees, living subsidies and etc. As to two project school in Wengyuan county which involves temporary resettlement of teacher group, there are three costs should be implemented, first one is teachers' removal subsidy (This kind cost should be consult between school and teachers), second one is subsidy of residential temporary resettlement (This kind cost should be consult between school and teachers). The third one is housing rent subsidy. While as to temporary resettlement scheme which made by the Wengyuan county and Huilai county, there is not involve temporary resettlement subsidy, removal subsidy and etc. So assessment group suggest Wengyuan county to further refine and improve the temporary scheme, increase the budget of temporary resettlement work.

### **5.2 The Management of Project Fund**

The temporary resettlement fund should be accord with financial management system of the World Bank and domestic financial management system strictly, any diversion, occupation, waste and capture of the temporary fund should be forbidden to make sure a fixed sum is for a fixed purpose. The project office of Guangdong province, the project office of Wengyuan county as well as the project office of Huilai county will supervise and inspect the management of temporary resettlement fund in

project schools, if any problems found the relative party should be punished strictly to make sure the temporary resettlement fund can play its roll.

### **5.3 Budget**

Temporary resettlement fund should be undertaken by the project party, and three project schools can apply fund in accord with the needed fund of temporary resettlement and list project fund. Influenced teachers don't need to undertake any cost. Assessment group carry on reasonable budget according to the needed fund of general temporary fund and actual situation of Wengyuan county and Huilai county .Assessment group thinks temporary resettlement includes three parts:first one is housing rent, second one is removal subsidy, third one is living subsidy of temporary resettlement. According to the resettlement scheme of two project schools of Wengyuan county, influenced teacher group temporally relocated in the school dormitories and multiple-use building, removal is easy and removal distance is also short. Influenced teachers are school's vocational teachers with stable salaries, so temporary resettlement will not exert any impacts to their normal life. As to specific to the situation of every project school, assessment group thinks the primary school of Wengyuan county involves two situations, one is resettlement inside the school , the other is resettlement outside the school, as to resettlement inside the school , the school can consider offer subsidy for removal cost and temporary resettlement living cost. As to resettlement outside the school ,the housing rent policy should be implemented to ensure the school take all the rent cost of new residential point. The teachers of Bazai township central primary school in Wengyuan county all belong to the resettlement inside the school, so it can consider to offer subsidy for teachers' removal cost and temporary living costs, or to employ professional moving company to carry on moving work. According to relative regulations, combined with actual situation in Wengyuan county and Huilai county, assessment team has estimated temporary resettlement fees just like following:



**Table 5-1 Budget sheet of temporary resettlement fees**

Fee name	Unit price (unit: Yuan)	Expense amount (unit: Yuan)	Explain
Renting fees	400	86400	18 sets, calculated by 12 months
Removing fees	100	6700	Calculated by 100 Yuan per person
Living subsidy	100	6700	Calculated by 100 Yuan per person
Total		99800	

## **6. Public Participation**

### **6.1 Participatory Evaluation**

Assessment group mainly adopt the methods of participatory evaluation to evaluate immigrant resettlement activity and to authorize immigrant action planning. Participatory evaluation stress the concept of “Participation”, encourage and accept multi-role participation, different interest group participate into decision making, implementation and operation of whole project process. Assessment group take into full account the diversity of different groups, balance the participatory limit of different culture level and background, adopt diversified forms of participatory evaluation methods such as focus group, drawing, sorting, provide multiple sources to ensure immigrants can participate into the process of project evaluation.

### **6.2 The Public Participation in the Process of Project Construction**

The public participation in the process of project construction can be reflected in these aspects.

Firstly, public participation at the stage of investigation and evaluation of project. At the stage of investigation and evaluation of project, assessment group has organized public participation and consulting activities through the methods of forum, personal interview and consultation table deliver to understand influenced teachers’ questions which should be answered, and understand their suggestions and expectation for the project. As to two project schools in Wengyuan county which need to carry on temporary resettlement work, assessment group should understand the influenced teachers’ living conditions and their suggestions through consultation table deliver, interview, on-the-spot visit and etc.

Secondly, the public participation and information disclosure of temporary resettlement work. The influenced teachers’ opinions should be listened when project schools making temporary resettlement scheme, and invite them to participate into the

making of scheme which slao should be recognized by them. Meanwhile the publish work should be well done, the progress of project should be published on the board timely to accept influenced teacher group's feedback.

## **7. Complaint Channel**

Immigrant resettlement is a complex work. In order to guarantee immigrants' benefits, the high levels of transparency and easy-going processing program should be established to collect immigrants' advice and complaints to ensure people's unsatisfied problems can be solved in a fair and efficient way. Assessment group believe the temporary resettlement work of Wengyuan county should establish following complaint channels.

Firstly, temporary resettlement work group should be established at the school levels. The temporary resettlement work could be composed of principal, logistic officer and teacher representatives which in charge of temporary resettlement work and solve the problems timely.

Secondly, temporary resettlement work group in Wengyuan county and Huilai county should coordinated by the project leader group and invite unite leaders to participate, daily work should be coordinated by the project office. The work duty of leader group is to supervise project school to complete their temporary resettlement work timely and coordinate complex problems to make sure the temporary resettlement work can be carried on orderly.

Thirdly, set up complaint telephone, staff should be organized to listen and answer influenced people's complaint telephone. The record should be done well when the staff received influenced teachers' complaint telephone. It would be better that the problems solved on site, if not it should be reported to the superior to coordinate to make sure the answer work will be done well.

## 8. Monitoring and Evaluation

When involving in the immigrants resettlement, in order to guarantee smooth implementation of the immigrants resettlement plans and realize the goals of proper immigrants resettlement, the project office should regularly monitor and evaluate the immigrants resettlement activities strictly according to the requirements specified in the *World Bank Business Policy OP4.12 Involuntary Migration* and *World Bank 's Chinese Loan Projects and Resettlement Monitoring & Evaluation Business Guide*. The monitoring is divided into the immigrants resettlement agency ' s internal monitoring and external independent monitoring. According to Wengyuan county's and Huilai county's actual situation the details of assessment group's internal monitoring and external independent monitoring can refer to followings.

Internal monitoring ask for project officers should in charge of regular inspection of temporary resettlement work to ensure the problems can be solved timely. Details of the internal monitoring include:

- a) Check the implementation, including the implementation of various immigrants resettlement plans in accordance with the policy framework provisions; check the implementation of all basic immigration information, loss of assets or loss of evaluation, compensation provisions, resettlement and recovery rights;
- b) Monitor the immigrants resettlement plans for any implementation in accordance with the design and approved solutions;
- c) Check the funds for implementing the immigrants resettlement plans for any untimely or insufficient appropriation and check the usage of these funds for any violations against the provisions in the immigrants resettlement plans;
- d) Record all complaints and relevant solutions to guarantee timely solutions of the complaints.

External independent monitoring: Regular external monitoring and evaluation of the implementation of the immigrants resettlement plans will be conducted by independent institutions hired by Guangdong Provincial Department of Education via open tendering depending on the foreign-funded projects management office. The

independent institutions and individuals can be the academic or institutional units, non-governmental organizations (NGO) or independent consulting companies, which must have qualified and experienced workers and task outlines recognized by the World Bank.

The external monitoring and evaluation generally covers the following details:

a) Monitor the owners, the immigration implementation agency' s setting, distribution of tasks and personnel allocation and the immigration agency' s capacity building and training activities; compare the immigrants resettlement plans and evaluate the appropriateness of the plans;

b) Investigate and know the main policies for immigration implementation, compare the immigrants resettlement plans, analyze relevant changes and evaluate the appropriateness of the policies. Conduct typical sampling to check the compensation standards for various immigration losses (especially the major losses of permanent land expropriation and demolition of houses) and the implementation of compensations, compare the immigrants resettlement plans, analyze relevant changes and evaluate the appropriateness of the compensation standards;

c) Implementation of the immigration;

d) Immigration compensation funds and budges;

e) Analyze and evaluate the immigrants housing reconstruction and living resettlement;

f) Analyze and evaluate the realization of immigrants' income and living standards recovery goals based on the base investigation, sampling investigation and tracking & monitoring investigation;

g) Refer to the documents and materials and the on-site typical household survey as well as monitor the channels and procedures for the immigrants' complaints and appeals and the handling of complaints;

h) Monitor the public participation during the immigration implementation, the negotiation activities and corresponding effects, the preparation, printing and feedback of immigrants information booklets and the immigrants information announcement and corresponding effects;

i) Implement the handling of problems pointed out in the World Bank inspection team ' s memorandum and the previous immigration monitoring and evaluation reports;

j) Summarize the immigration implementation, make corresponding conclusions and give relevant suggestions and track the existing problems until complete disposal of those problems;

During the immigration, the external monitoring and evaluation agencies generally conduct on-site investigation and monitoring & evaluation twice each year. After the immigration activities, the on-site investigation and monitoring & evaluation can be conducted annually, and more investigation and monitoring & evaluation can be properly conducted according to the needs for immigrants resettlement, but the additional monitoring and evaluation should be approved by the World Bank. The external monitoring work generally should be conducted until realization of the immigrants resettlement goals. Evaluation opinions and suggestions should be given for the whole process of immigrants resettlement and the immigrants living standards and productivity recovery through the external monitoring and evaluation. The external inspection reports must be submitted to the project office and World Bank at the same time.

## Annex 1 Immigrant Resettlement Compensation Standards

The framework arranges compensation standards on basis of protecting laws and regulations of the World Bank and PRC. As to housing demolishing can refer to: “*Regulation on the Expropriation of Building on State-owned Land and Compensation*” (State Council Order No. 590), “*Evaluation on the Housing Expropriation on State-owned Land*” (Housing [2011] NO.77). The project be carried out according to local latest policies In the process of project implementation.

### 1.Principle of Land-expropriation Compensation

#### a. Principle of Perpetual Land-expropriation Compensation

The World Bank loans to improve the balanced & high quality compulsory educational demonstrative project at underdeveloped districts in Guangdong province, the project includes 16 items and counties (cities / districts) should make land expropriation protection standards according to “*Standards on Land Expropriation in Guangdong Province*” (Guangdong State Land Resources published (2011) NO.21) . The document published on Jan 19, 2011 and come in to law from implemented day. Document regulates the minimum standard about collective-owned land expropriation concretely (only including land compensation fess and resettlement compensation fees, not including compensation for young crops and attachment to ground), compensation standards as bellowing:

**Table(Annex) 1-1 The Compensatory protection Standards for Land Expropriation in Guangdong Province(Unit: 10 thousand/hectare)**

Categories of Districts	Farmland	Orchard	Woodland	Aquaculture	Unutilized land
First	128.70	99.00	45.00	133.65	39.60
Second	97.50	75.00	34.20	101.25	30.00
Third	78.00	60.00	27.70	81.00	24.00
Fourth	70.20	54.00	25.00	72.90	21.60
Fifth	58.50	45.00	20.60	60.75	18.00
Sixth	52.65	40.50	18.60	54.70	16.20



seventh	47.45	36.50	16.20	49.30	14.60
eighth	40.30	31.00	14.85	41.85	12.40
ninth	33.15	25.50	12.15	34.40	10.20
tenth	30.20	23.25	10.80	31.40	9.30

**Table(Annex)1-2 Geographic Classification of Land expropriation compensatory protection standard in Guangdong Province**

Prefecture-level cities	Cities (Counties / Districts)	Constructional project of village and town	Categories of Districts
Shantou city	Chaoyang district	Jinzhao town	Sixth
Shaoguan city	Wengyuan county	Jiangwei town	ninth
		Bazai town	tenth
Meizhou city	Wuhua City	Shuizhai town	eighth
		Anliu town,Huacheng town	ninth
		Longcun town,Huayang town,Shuanghua town,Qiling township,Tanxia town	tenth
Shanwei city	Lufeng city	Yashi town,Nantang town	seventh
		Neihu town,Chengdong town,udong town,Poyang Town,Tanxi Town, Jiadong town,Shangying town	eighth
	Haifeng county	Meilong town, Chengdong town, Efu town, Chikeng town, Ketang town,Gongping town,Chishi town, Taohe town	eighth
		Dahu town, Huangqiang town, Pingdong town, Huangqiang tree farm	ninth
Zhanjiang city	Suixi county	Chengyue town, Huanglue town	eighth
		Caotan town, Guangmen town,Jianghong town, Jiepao town, Hetou town, Lemin town, Yanggan town, Yangqing town	ninth
	Lian jiang city	Anpu town, Qingping town,Shiling town	sixth

		Xinmin town, Jishui town, Changshan town, Cheban town, Heliao town, Hechun town, Hengshan town, Liangsong town, Shijiao town, Tangpeng town, Yingzai town, Xinmin town, Anpu town, Yatang town, Shijin town	seventh
	Leizhou city	Kelong town, Longmen town, Baisha town, Wushi town	seventh
		Jijia town, Qishui town, Leigao town, Yangjia town, Dongli town, Yingli town, Tandou town, Tangjia town, Beihe town	eighth
	Wuchuan city	Haibin street	sixth
		Huangpo town, Wuyang town, Tangzhui town	seventh
		Wangcunguang town, Zhangpu town, Qianshui town, Zhenwen town, Lanshi town	eighth
Maoming city	Dianbai district	Shanlang town	seventh
		Magang town, Lingwen town, Mata town, Shuzai town, Xiaoliang town, Poxin town, Yangjiao town, Lintou town, Xiadong town, Huangling town, Guanzhu town, Luokeng town, Naxia town, Wangfu town	eighth
	Huazhou city	Nansheng street, Shiwan street,	sixth
		Pingding town, Hejiang town	seventh
		Baoyu town, Boyang town, Changqi town, Daqiao town, Guanqiao town, Jianghu town, Ligang town, Liangguang town, Linchen town, Nawu town, Tongqing town, Wenlou town, Xinan town, Yangmei town, Zhongdong town	eighth
Chaozhou city	Chaoan district	Caitang town, Guxiang town	seventh

		Fuyang town, Guihu town,Guxiang town, Dengtang town,Fengtang town,Longhu town, Jinshi town,Shaxi town,Dongfeng town,Jiangdong town, Wenci town,Fenghuang town	eighth
Jieyang city	Huilai county	Kuitan town	eighth
		Longjiang town, Donggang town,Zhoutian town, Qishitown,Aojiang town, Qianzhan town,Xianan town, Donglong town,Shenquan town,Xixi town,	ninth
	Puning city	Lihu town,Zhanlong town	seventh
		Guangtai town,Nanjing town,QQilintown,Daba town,Meilin town,Yunluo town,Gaopu town,Chuanpu town,houxi village,Maanshan farmland,Daping farmland	eighth
	Jiexi county	Fengjiang town	ninth
Yunfu city	Luoding city	Luoping town,Sulong street,TTanbin town, Huashi town,Taiping town,Jinji town,Weidi town	eighth

#### **b. Principle of Temporary Land-occupies Compensation**

If the project need to occupy collective-owned land temporarily during construct period, owner of the project shall consult with village committee and influenced families to confirm compensation principles, green crop compensation should be supplied according to policy in local county. If there is no impact to young crops shall depend on specific conditions to ensure influenced village committee's and families' legal interests can reach a reasonable compensation

#### **c. Compensation Principle for Crop Grass and Attachment to Ground**

According to relevant laws and regulations of “Land Administration Law of the PRC” and “Regulations on Compensation for Farmers’ Collective-owned Land Expropriation of Guangdong Province”, green crop compensation fees is divided into

short-term crop compensation, long-term crop compensation and scattered fruit trees compensation. Short-term crops should be compensated as one year production. Long-term crops should be compensated as the length of planting and growing time to offer reasonable compensation. Scattered fruit trees and long-term flowers and trees around the farmhouse should be compensated as crops species, growing period, crop amount to offer reasonable compensation.

The compensation standards for attachment to ground (buildings) should be confirmed by the qualified evolutionary institute to compensate according to evolutionary price or replacement market cost. Expropriation of tomb, well should offer certain resettlement methods after people compensated. Expropriation of fishpond, lotus root pond should be calculated as comprehensive annual output value. As to farming facilities should offer reasonable compensation for actual loss.

## **2.Compensation Principle of Housing Demolition**

### **a. Rural Housing Demolition**

If the project involves rural housing demolition during implementation period, the qualified third-party evaluators shall evaluate as market price and offer demolition compensation costs which on basis of consensus of project office, project owner, project board and relocation household, then confirmed in the form of contracts.

### **b. Rural Non-residential Housing Demolition**

If the project refers to rural non-residential housing demolition, the concrete compensation principle should be implemented by local governmental coordinating project owner in terms of the method of “case by case”, then employ qualified third-party evaluation institute to offer compensation in accordance of market evaluation, compensation fees should be offered to property owner timely.

Demolished buildings belongs to perpetual buildings should be evaluated by evaluation institute in light of replacement cost method to make sure the compensation fees. Residents’ machinery equipment and corollary equipment should be evaluated by evaluation institute in light of replacement cost method to make sure assessed value of machinery equipment. Compensation for immovable machinery equipment and corollary equipment should be in light of assessed value.

Compensation for movable machinery equipment and corollary equipment should be in light of evaluation. Compensation for young crops on ground should be in light of evaluation. As to suspend production and work due to demolition, demolition part should offer compensation to people who stop their work due to demolition in light of the registered works in urban or rural labor and social-security institute.(including temporary workers) .the compensation for unemployed individuals should be as the local minimum wage multiply by unemployed month; the compensation for people who suspend their production and work should be light of the multiple of highest month profit (after tax) in preceding three years which registered in tax department, the compensation for relocate of plant and officer should be in light of local actual conditions.

### **3. Executive Specification of Immigrant Resettlement Compensation**

(1) Expropriation of unused land, rural collective construction land (including rural roads and other ground ) also should be compensated according to state and local relevant laws.

(2) As to compensation for terminated land-contract lands and young crops on the temporary land, the terminated time of land contract should be informed previously, the relevant immigrant information and rights, arrangement of recovery time, allocation of money, using and management of resettlement funds, measures of production recovery as well as other matters should be told to villagers previously. The participation of impacted people should be guarantee to make sure to reach a consensus. The mutual negotiation shall be done through representatives symposium, influenced community residents' or villagers' meeting.

(3) land-losing farmers' sustainable development should be considered fully, especially to elder-supporting question can be considered in terms of "Notice on Further Improving Land-expropriation Farmers' Old-age Security which Forward from Provincial Human Resources and Social Security Hall" (Guangdong [2010] NO.41) . Other relevant regulations from prefecture-level cities, project counties (districts, cities) also should be taken in consideration.

(4) Impacted people's production and livelihood should be recovered as soon as

possible, relevant affirmative action such as preferential recruitment, vocational training should be organized during the project period.

(5) Adopt the principle of “construction before dismantle” possibly. Immigrants should obtain full compensation before land expropriation, only after payment of compensation or provision of resettlement sites and removal subsidies can land & property expropriation implementation start.

(6) In view of the project does not involve perpetual land expropriation, just involves with less demolition, and most demolished buildings are old and dilapidated building with clean property right which belong to project owners, and demolition right also belongs to project owners. so there is no compensation for housing facilities.

## **Annex2 The Spot of Publish of Temporary Resettlement Framework in Wengyuan County**



Picture (Annex) 2-1 The publish of temporary settlement framework of Jiangwei township central primary school in Wengyuan county



Picture (Annex) 2-2 The publish of temporary settlement framework of Bazai township central primary school in Wengyuan county



### Annex3 Opinions for Temporary Resettlement of Demolition of the Teachers' Transitional Dormitories Constriction Project

**房屋拆迁临时性自愿移民安置办法知情同意书**

项目地：翁源\_\_\_\_县(区/市) 江尾\_\_\_\_镇(乡) 中心\_\_\_\_学  
校

受影响户数：5 户

临时安置办法：(由各校/教学点自行填写)

1. 陈思书与罗尽兰夫妇迁往校内教师宿舍楼三栋 201、202 房居住；
2. 叶喜东与徐美秋夫妇迁往原江尾农业银行家属楼 301 房居住 (该套房由学校安排租金 350 元租用)；
3. 何美璋由学校调整房子安置到宿舍楼二 203 房暂住；
4. 吴文影由学校调整房子安置到宿舍楼二 205 房暂住；
5. 刘月明迁往江尾街兰亭颖园小区 106 号居住 (该套房由学校安排租金 300 元租用)。

受影响户签名：(此处请签名并按手印)

陈思书, 叶喜东, 何美璋, 刘月明

陈思书

二〇一六年五月三日

加盖公章：翁源江尾镇中心小学

Picture (Annex)3-1 Informed consent form of temporary resettlement measures of Jiangwei  
central primary school in Wengyuan county

**房屋拆迁临时性自愿移民安置办法知情同意书**

项目地：翁源县（区/市）坝仔镇（乡）中心小学学校（教学点）

受影响户数：10户

临时安置办法：（由各校/教学点自行填写）

为改善教师生活条件，解决教师住宿困难的问题，学校拟拆除原教委办综合楼，并在原地新建一栋五层教师周转房。为确保工程顺利、安全进行，学校对居住于综合楼的10户家属（教师）在施工期间作出暂时借住、租住或走教的临时性安置。

受影响户签名：（此处请签名并按手印）

黄立、黄子洲、刘霖、吴德弟、刘秋英、陈强、张秋芳、廖芳香、林瑞春、王贵、李耀石、程小盼、刘文、刘永杰、刘捷、马强、梁跃夫、王贵西

教 二〇一六年二月 四 日

加盖公章： 县（区/市）教育局

Picture (Annex)3-2 Informed consent form of temporary resettlement measures of Bazai central primary school in Wengyuan county

房屋拆迁临时性自愿移民安置办法知情同意书

项目地：惠来县（区/市）仙庵镇（乡）中心小学学校（教学点）

受影响户数：16

临时安置办法：（由各校/教学点自行填写）

校外租房。

受影响户签名：（此处请签名并按手印）

黄美家 杨利成 陈伟权 余新辉 王燕芳  
刘伟 王强 王强 周泽丰 阮廷存  
李晓霞 杨强 杨楚峰 杨明友 林永荣  
黄如慧

二〇一六年二月二十四日

加盖公章：惠来县（区/市）教育局

Picture (Annex)3-3 Informed consent form of temporary resettlement measures of Xian'an central primary school in Huilai county

## **Annex4 Temporary Resettlement Regulations**

**Temporary voluntary immigrants' resettlement project of housing demolition of Jiangwei township central primary school in Wengyuan county.**

**Project basis: Wengyuan county(district,city) , Jiangwei town central primary school**

### **1. Relative people of Housing Demolishing**

- (1) The couple of Chen Sishu and Luo Jinlan
- (2) The couple of Ye Xidong and Xu Qiumei
- (3) WuWenying, He Meizhang, Liu Yueming

### **2. Resettlement Regulations**

(1) The couple of Chen Sishu and Luo Jinlan will move to 201, 202 rooms of No3 teachers' dormitory building to live.

(2) The couple of Ye Xidong and Xu Qiumei will move to 301 room of former Jiangwei agriculture bank's residential building. (School will in charge of 350 Yuan rent)

(3) HeMeizhang will move to 203 room of No2 dormitory building to live temporarily which in charged by school.

(4) WuWenzhang will move to 205 room of No2 dormitory building to live temporarily which in charged by school.

(5) Liu Yueming will move to 106 room of Lantingyiyuan residential area in Jiangwei street.

**3. All teachers which involved in housing demolition are satisfied with school's resettlement project, and they would like to cooperate with school.**

Jiangwei township central primary school in Wengyuan county

2016/4/5

**Temporary Voluntary Immigrants' Resettlement Project of Housing Demolition of Jiangwei Township Central Primary School in Wengyuan County**

In order to improve teaching conditions, to built comfortable and happy school

environment as well as to solve teachers' dormitory living difficulties, thanks to relative education departments' correct guidance and all walks of social circles' support, our school is prepared to demolish previous comprehensive building of education board(offices and dormitories). Then to rebuilt a turnover building of five floors to solve the teachers' dormitory living problem thoroughly. In order to ensure the project can going well the temporary resettlement solution for teachers' moving as following:

### **1. Basic Situation**

Recent years, Bazai central primary school is in line with school's layout adjustment, the high grade students in rural areas will be incorporated into central primary school, previous high grade teachers also come to central primary school to teach. The biggest problem of Bazai primary school is teachers' dormitory problems, so for a long time it's very common for two or three teachers to live together or commuting to schools. There are 10 families who live in the building which be prepared to demolish, the basic information as below:

No1. Three members family, they are husband Huang Qili, wife Liu Lirong, son Huang Zizhou(student).

No2. Teachers, Luo Goudi, Liu Qiuying

No3. Teachers, ZhangQiufang, Liao Fangxiang

No4. Couple, Qiu Jiguang, Li Shunyu

No5 Teachers, Chenjie, ChengXiaopan

No6 Vice-principal, Li Zhijian

No7 Vice-principal, Ma Xingchang

No8 Vice-principal, Lin Peishou

No9 General affairs, LiuRentian; teacher, Liujie, Liang Yuetian

No10 Principal, Yan Jingxi

### **2. Resettlement Situation**

In order to ensure the demolishing project can going well and to maintain normal order of school's daily works, school has open leading group meeting as to teachers' temporary resettlement, then further clear temporary resettlement solutions, concrete

arrangement just as below”

(1)Huang Liqi, Huang Zizhou, Liu Lirong will be arranged to dancing room at 5F of Yumei building temporarily.

(2)Chen jie, GuXiaopan will be arranged to music room at 5F of Yumei building temporarily.

(3)Qiu Jiguang, LiShunyu will be arranged to lab room at 4F of Yumei building temporarily.

(4)Liao Fangxiang, Zhang Qiufang will be arranged to art room at 4F of Yumei building temporarily.

(5)MaXingchang, LiZhijian will be arranged to computer room at 3F of Yumei building temporarily.

(6)Luo Goudi, Liu Qiuzhi will be arranged to computer-2 room at 3F of Yumei building temporarily.

(7)Lin Peishou, Liu Rentian will be arranged to young pioneers office-2 room at 2F of Yumei building temporarily.

(8)Liujie, Liang Yuetian will be arranged to reading room at 2F of Yumei building temporarily.

(9)YanJ ingxi will be arranged to education resource room at 1F of Yumei building temporarily.

### **3. Execution Time**

School will in line with the progress of demolishing project to notify relative teachers to move in advance of 15 days.

All solutions should be carried out by rules.

Bazai township central primary school in Wengyuan county

2016/3/9