

Zhejiang Rural Water Supply and Sanitation Project  
Consolidated EIA Report  
(Attached Figures)

Zhejiang Huanke Environmental Consultancy Co., Ltd.

National EIA Certificate: Class A, No. 2003

May, 2014

## List of Figures

Figure 1.6-1 Layout Drawing of Discharge Outlet and Intake along the Fuchun River, the Water Body Absorbing Pollutants from the Stage IV of Fuyang Sewage Disposal Project

Figure 1.6-2 Location Diagram of Main Facilities and Periphery Sensitive Points of the Stage IV of Fuyang Sewage Disposal Project

Figure 2.3-1 Schematic Diagram of Monitoring Distribution Points in Longyang Sewage Disposal Plant

Figure 2.3-2 Schematic Diagram of Monitoring Distribution Points of the Stage IV of Fuyang Sewage Disposal Project

Figure 2.3-3 Schematic Diagram of Monitoring Distribution Points of Atmospheric and Noise Environmental Status of Fuyang Xindeng Subproject

Figure 2.3-4 Schematic Diagram of Monitoring Distribution Points of Atmospheric and Noise Environmental Status Fuyang Changkouzi Subproject

Figure 2.3-5 Schematic Diagram of Monitoring Distribution Points of Sewage Interception Pipeline of Fuyang

Figure 2.5-2 Diagram of Monitoring Distribution Points of Atmospheric Environmental Status of Longquan Subproject

Figure 2.5-3 Diagram of Monitoring Distribution Points of Acoustic Environmental Status of Longquan Subproject

Figure 2.5-4 Diagram of Monitoring Point Location of Water Environment of Longquan Urban Area Subproject

Figure 2.5-5 Diagram of Monitoring Point Location of Atmospheric and Noise Environment of Longquan Urban Area Subproject

Figure 3.1-1 Layout of Drainage Network of Anji Tianzihu District

Figure 3.1-2 Layout of Water Supply Network of Anji Tianzihu District

Figure 3.1-3 Construction Scheme of Water Supply System of Anji Meixi River District

Figure 3.1-4 Construction Schematic Drawing of Drainage System of Anji Meixi River

Figure 3.1-5 Construction Schematic Drawing of Water Supply System of Anji Tianhuangping

Figure 3.1-6 Construction Schematic Drawing of Drainage System of Anji Tianhuangping

Figure 3.1-7 Construction Schematic Drawing of Water Supply System Scheme of Anji Banshan District

Figure 3.1-8 Construction Schematic Drawing of Drainage System Scheme of Anji Banshan District

Figure 3.1-9 Construction Schematic Drawing of Water Supply System Scheme of Anji Xiaofeng District

Figure 3.1-10 Construction Schematic Drawing of Drainage System of Anji Xiaofeng District

Figure 3.1-11 Construction Schematic Drawing of Water Supply System of Anji urban area

Figure 3.1-12 Schematic drawing of Drainage System of Anji Urban Area

Figure 3.2-1 Layout Plan of Town Sewage Pipe Network of Xindeng Town, Fuyang City

Figure 3.2-2 Layout Plan of Sewage Pipe Network in Dayuan Town, Fuyang City

Figure 3.2-3 General Layout of Established Fuyang Sewage Disposal Plant and the Stage IV Project Plant Area

Figure 3.2-4 Location Schematic Diagram of Sewage Discharge Outlet of the Stage IV of Fuyang City

Figure 3.3-1 General Layout of Nandayang Water Plant of Longquan City

Figure 3.3-2 Layout Drawing of Water Supply Network of Longquan Urban Area

Figure 3.3-3 Layout Drawing of Sewage Pipe Network of Longquan Urban Area

Figure 3.3-4 Layout Drawing of Rainwater Pipe Network of Longquan Urban Area

Figure 3.3-5 Plant Area Arrangement Plan Water Plant of Anren Town, Longquan City

Figure 3.3-6 Layout Drawing of Water Supply Network of Anren Town, Longquan City

Figure 3.3-7 Layout Drawing of Sewage Pipe Network of Anren Town, Longquan City

Figure 3.3-8 Layout Plan of Sewage Station of Anren Town, Longquan City

Figure 3.3-9 Plant Area Arrangement Plan of Water Plant of Badu Town, Longquan City

Figure 3.3-10 Layout Drawing of Water Supply Network of Badu Town, Longquan City

Figure 3.3-11 Layout Plan of Sewage Station of Badu Town, Longquan City

Figure 3.3-12 Layout Drawing of Sewage Pipe Network of Badu Town, Longquan City

Figure 3.3-13 Collection Diagram of Pipe Network of He Village, Longquan City

Figure 3.3-14 Collection Diagram of Pipe Network of Songqu Village, Longquan City

Figure 3.3-15 Collection Diagram of Pipe Network of Xiaohuangnan Village, Longquan City

Figure 3.3-16 Collection Diagram of Pipe Network of Shuita Village, Longquan City

Figure 3.3-17 Collection Diagram of Pipe Network of Dasai Village, Longquan City

Figure 3.3-18 Collection Diagram of Pipe Network of Jibian and Shangwu Village, Longquan City

Figure 3.3-19 Layout Drawing of Water Supply Network of Xiaomei Town, Longquan City

Figure 3.3-20 Layout Drawing of Sewage Pipe Network of Xiaomei Town, Longquan City

Figure 3.3-21 Layout Drawing of Water Supply Network of Chatian Water Plant of Longquan City

Figure 3.3-22 Plant Area Arrangement Plan of Water Plant of Lanju Town, Longquan City

Figure 3.3-23 Layout Drawing of Water Supply Network of Lanju Town, Longquan City

Figure 3.3-24 Layout Drawing of Sewage Pipe Network of Lanju Town, Longquan City

Figure 3.3-25 Layout Plan of Sewage Station of Lanju Town, Longquan City

Figure 3.4-1 Layout Plan of Cangshan Sewage Disposal Plant of Tiantai County

Figure 3.4-2 Layout Drawing of Tantou Sanhepian Sewage Collection System of Tiantai County

Figure 3.4-3 Sewage Piping Routing Drawing in West District of Tiantai Basin



Figure 1.6-1 Layout Drawing of Discharge Outlet and Intake along the Fuchun River, the Water Body Absorbing Pollutants from the Stage IV of Fuyang Sewage Disposal Project

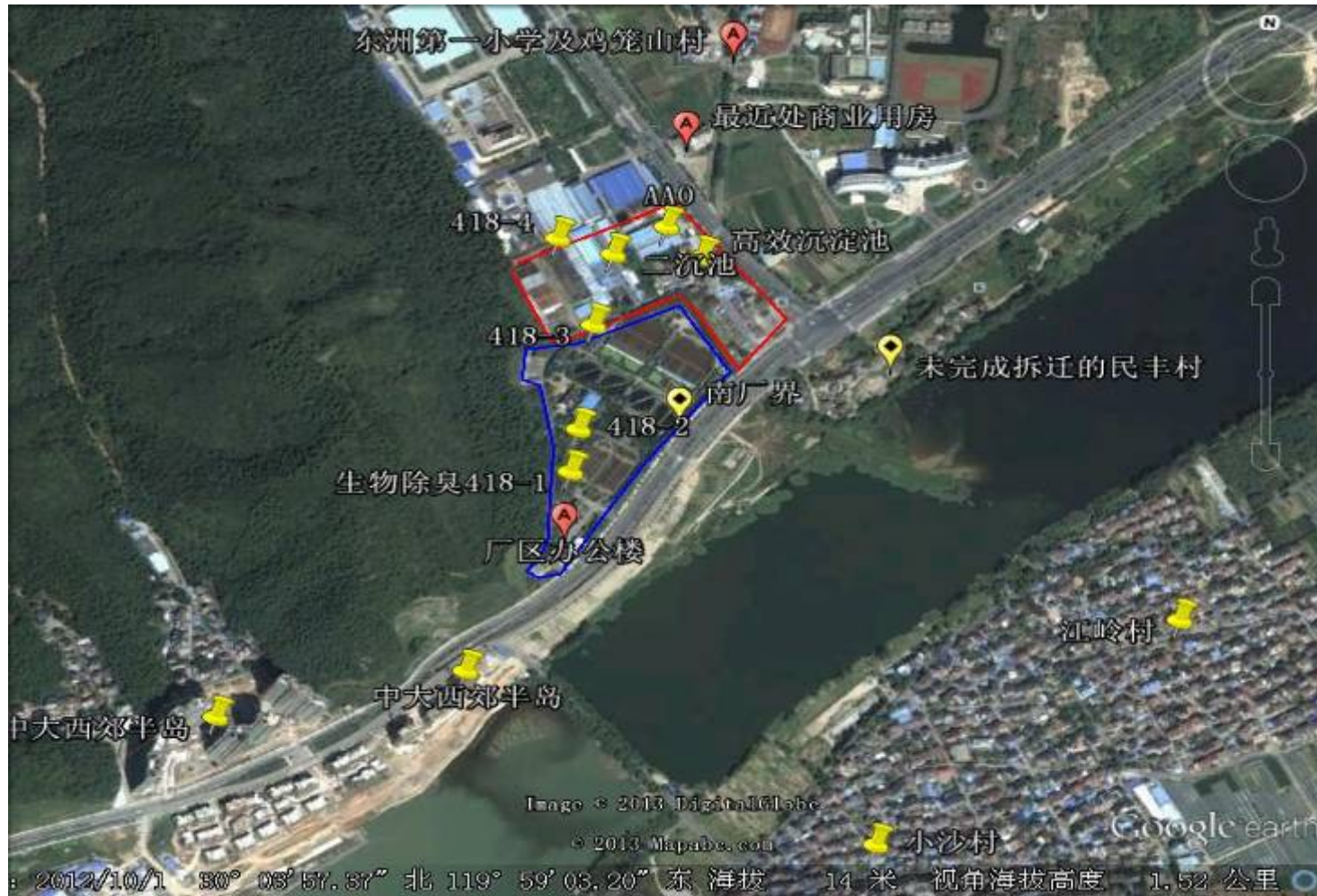


Figure 1.6-2 Location Diagram of Main Facilities and Periphery Sensitive Points of the stage IV of Fuyang Sewage Disposal Project



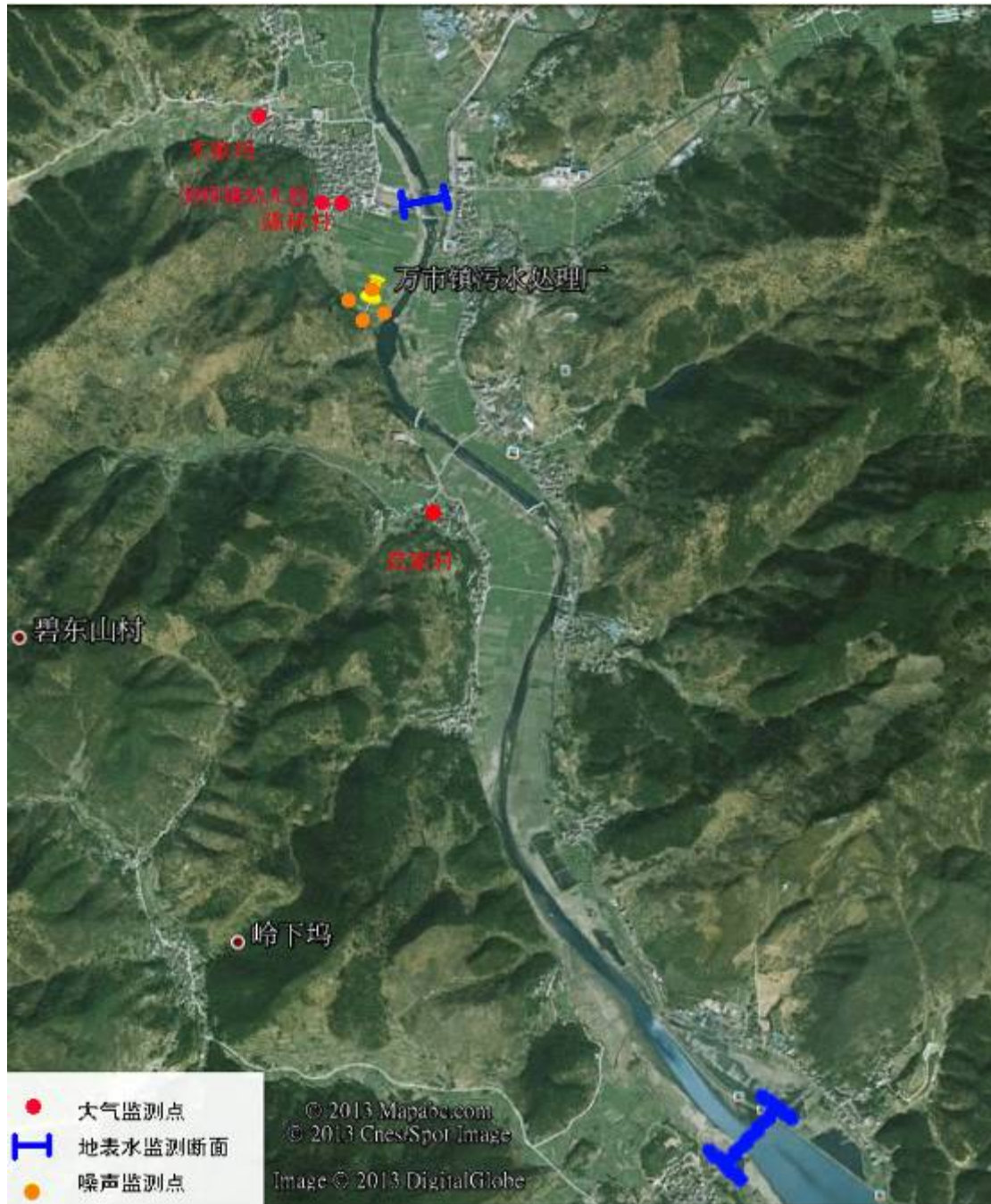


Figure 2.3-1 Schematic Diagram of Monitoring Distribution Points in Longyang Sewage Disposal Plant

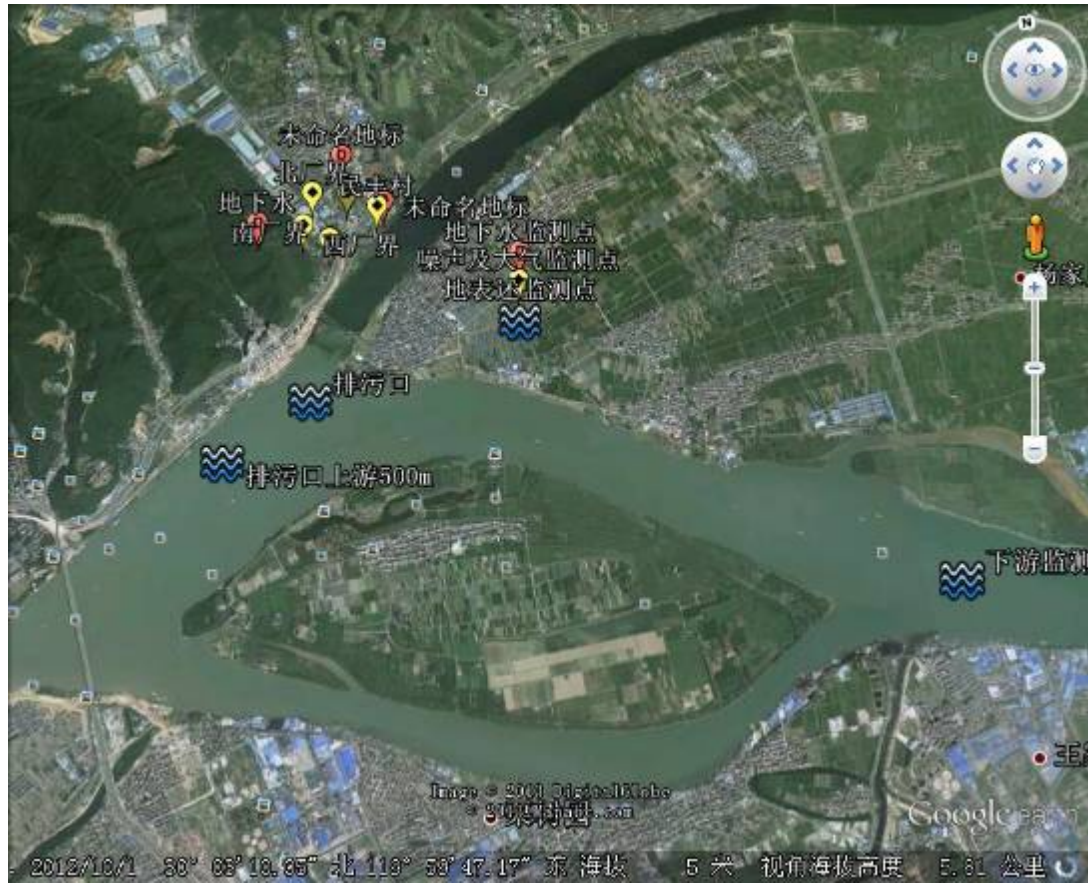
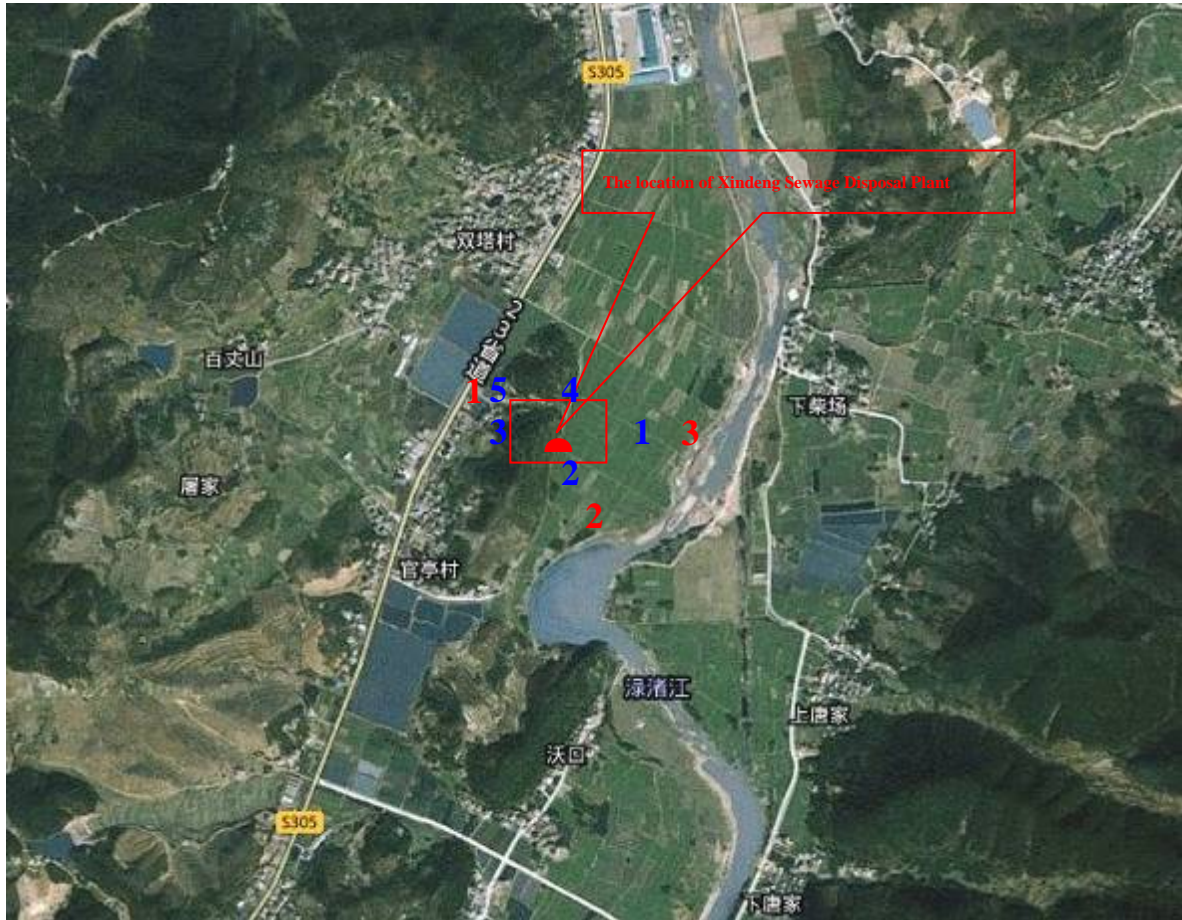


Figure 2.3-2 Schematic Diagram of Monitoring distribution points of the Stage IV of Fuyang Sewage Disposal Project

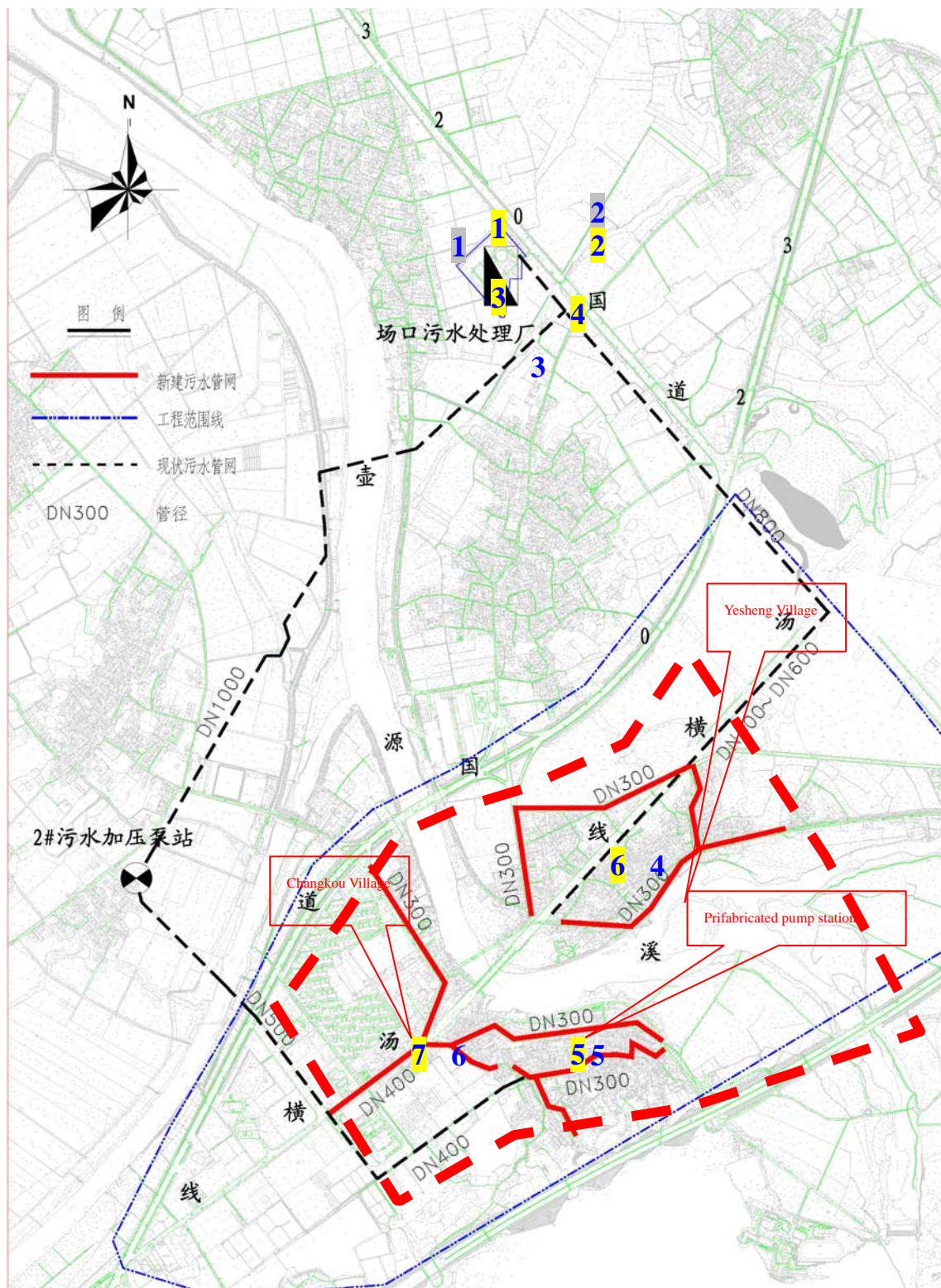




Note: 1, 2 and 3 are the ambient air monitoring point, 1#, 2#, 3#, 4# and 5# are the noise monitoring point

Figure 2.3-3 Schematic Diagram of Monitoring Distribution Points of Atmospheric and Noise Environmental Status of Fuyang Xindeng Subproject

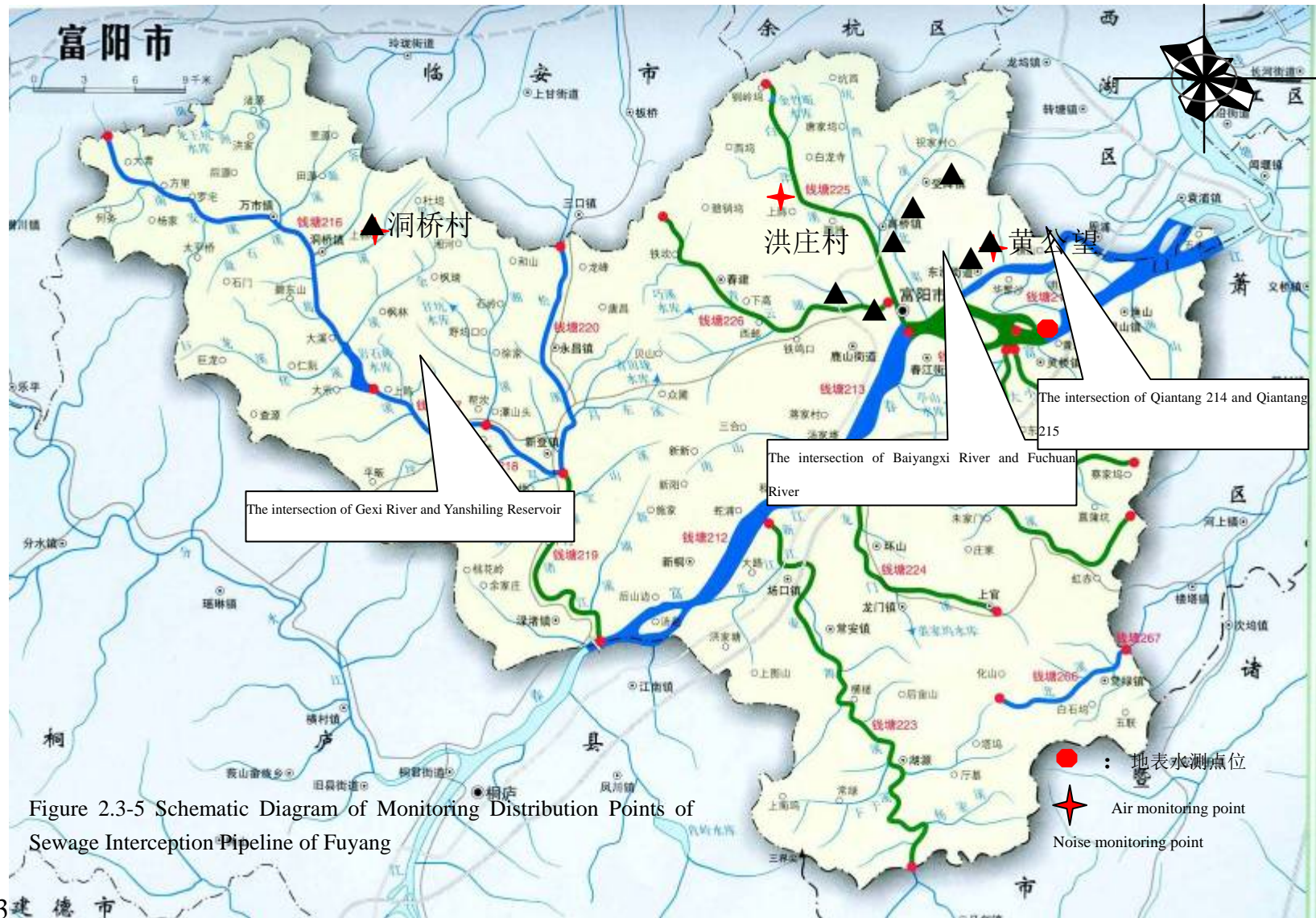




Note: 1, 2, 3, 4, 5 and 6 are the ambient air monitoring point, 1#, 2#, 3#, 4#, 5#, 6# and 7# are the noise monitoring point

Figure 2.3-4 Schematic Diagram of Monitoring Distribution Points of Atmospheric and Noise Environmental Status Fuyang Changkouzi Subproject





3 建德市



Figure 2.5-2 Diagram of Monitoring Distribution Points of Atmospheric Environmental Status of Longquan Subproject





Figure 2.5-3 Diagram of Monitoring Distribution Points of Acoustic Environmental Status of Longquan Subproject



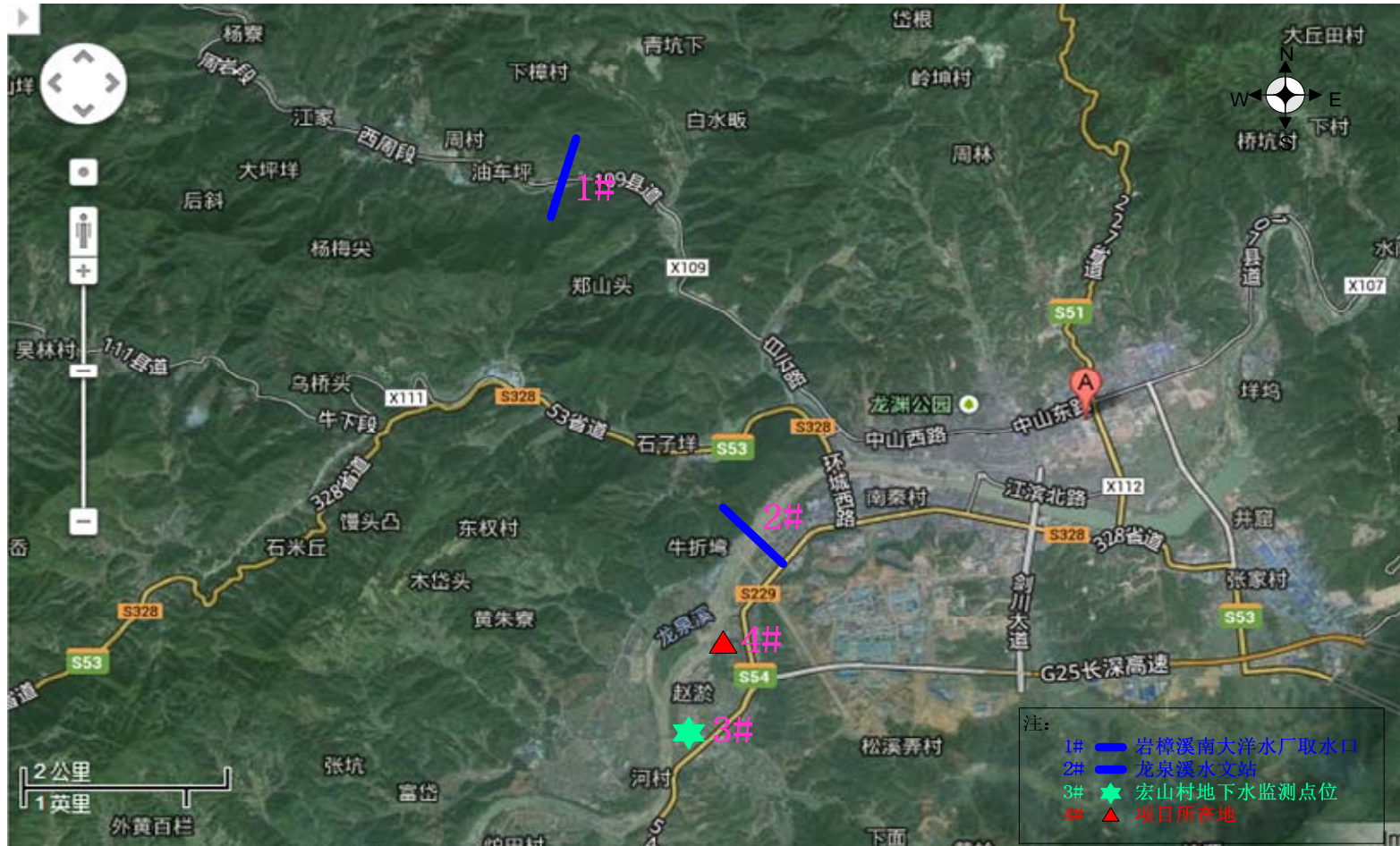


Figure 2.5-4 Diagram of Monitoring Point Location of Water Environment of Longquan Urban Area Subproject



Figure 2.5-5 Diagram of Monitoring Point Location of Atmospheric and Noise Environment of Longquan Urban Area Subproject





Figure 3.1-1 Layout of Drainage Network of Anji Tianzihu District

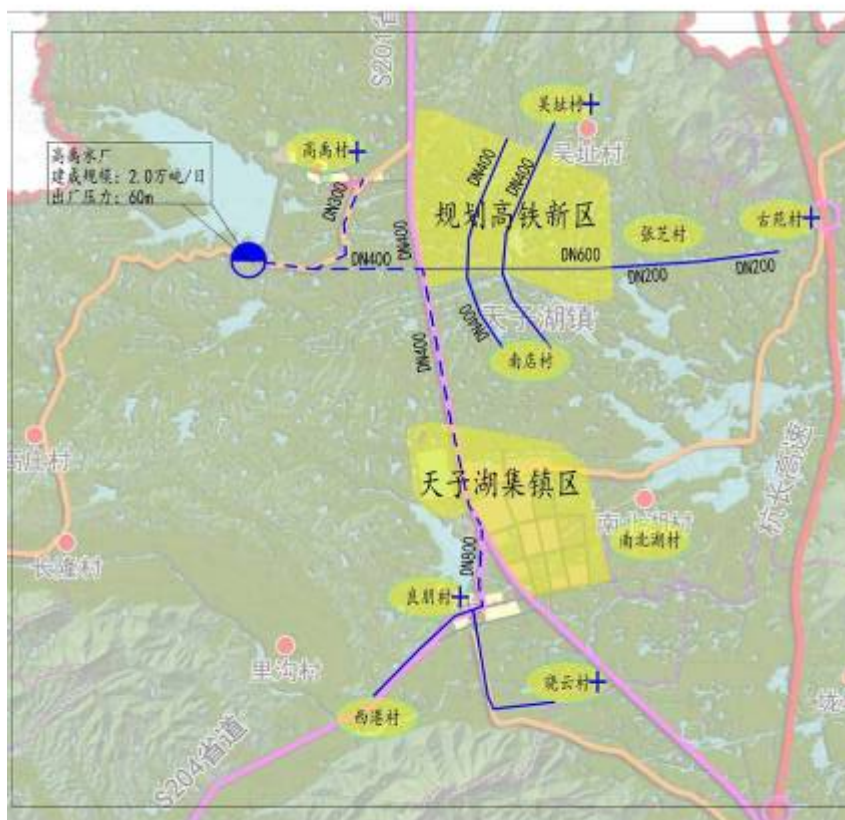


Figure 3.1-2 Layout of Water Supply Network of Anji Tianzihu District

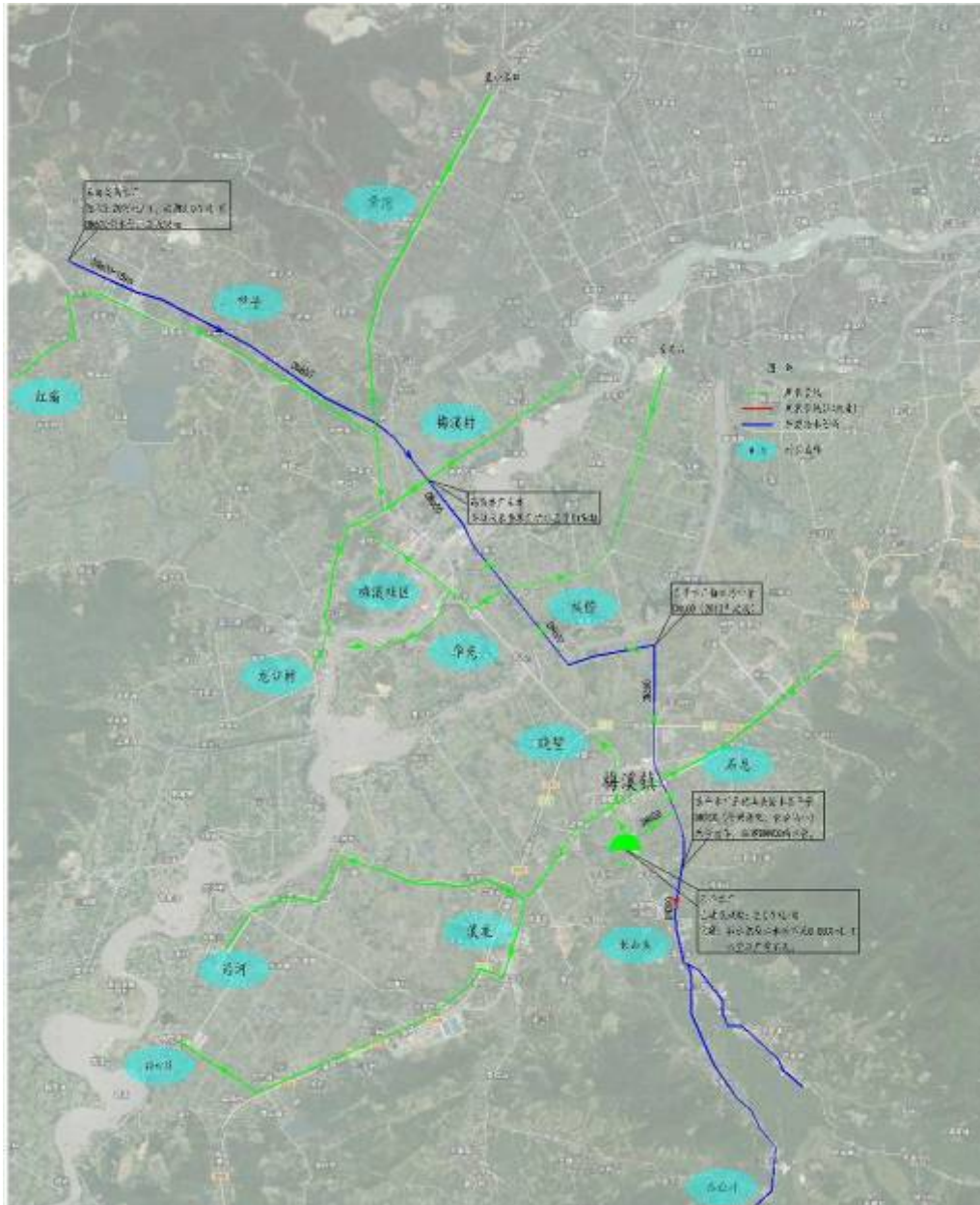


Figure 3.1-3 Construction Scheme of Water Supply System of Anji Meixi River District



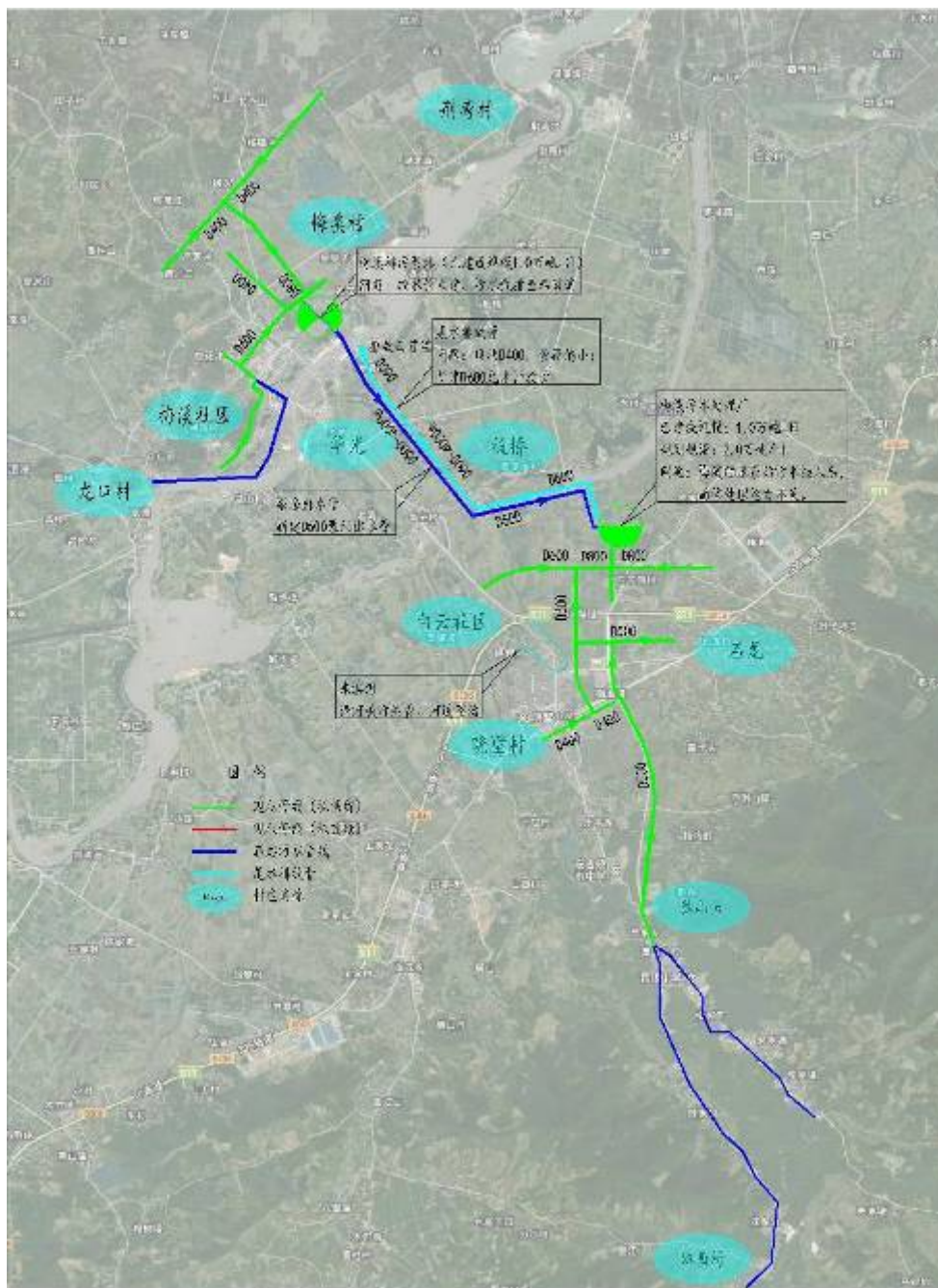


Figure 3.1-4 Construction Schematic Drawing of Drainage System of Anji Meixi River

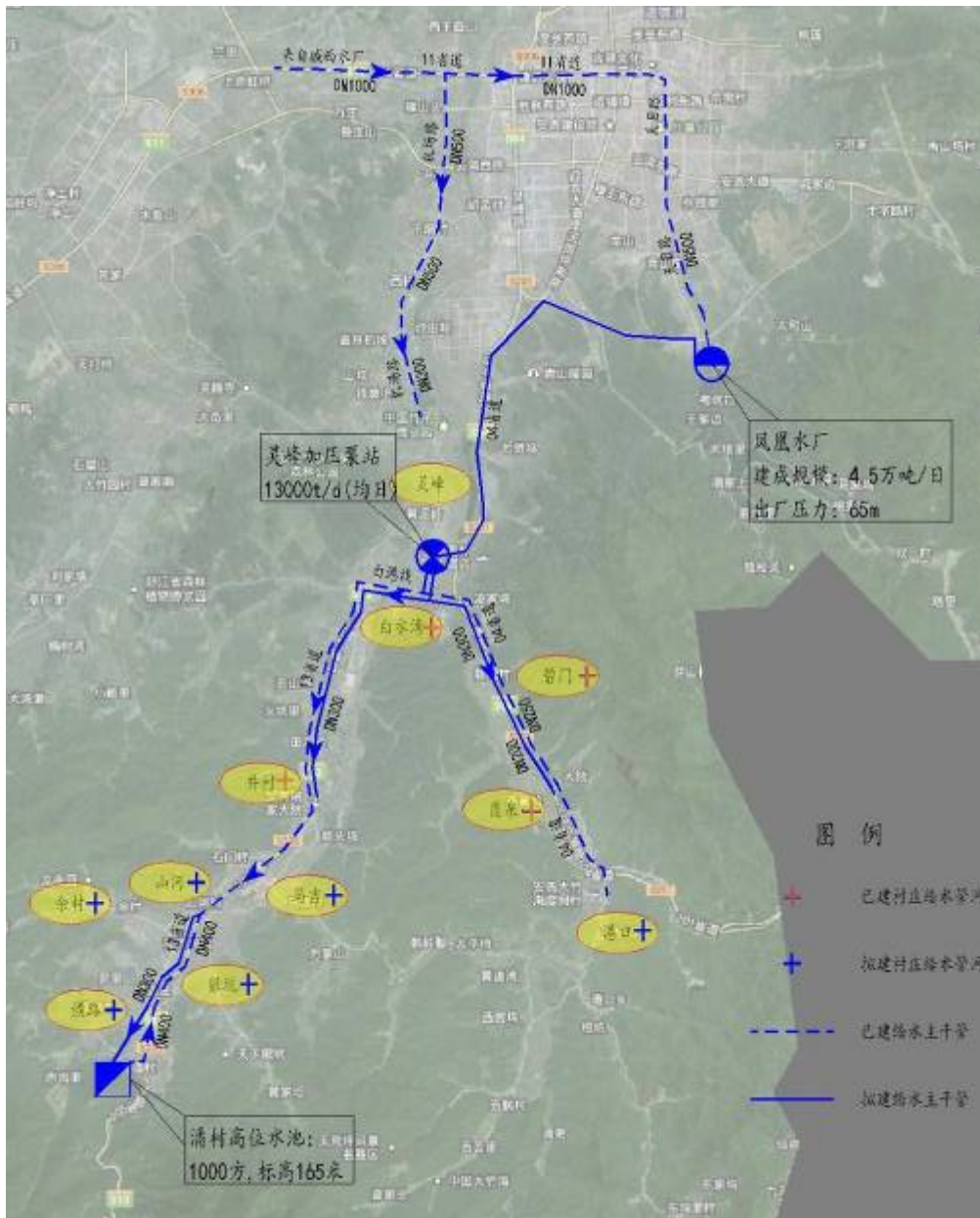


Figure 3.1-5 Construction Schematic Drawing of Water Supply System of Anji Tianhuaping



Figure 3.1-6 Construction Schematic Drawing of Drainage System of Anji Tianhuangping





Figure 3.1-7 Construction Schematic Drawing of Water Supply System Scheme of Anji Banshan District





Figure 3.1-8 Construction Schematic Drawing of Drainage System Scheme of Anji Banshan District

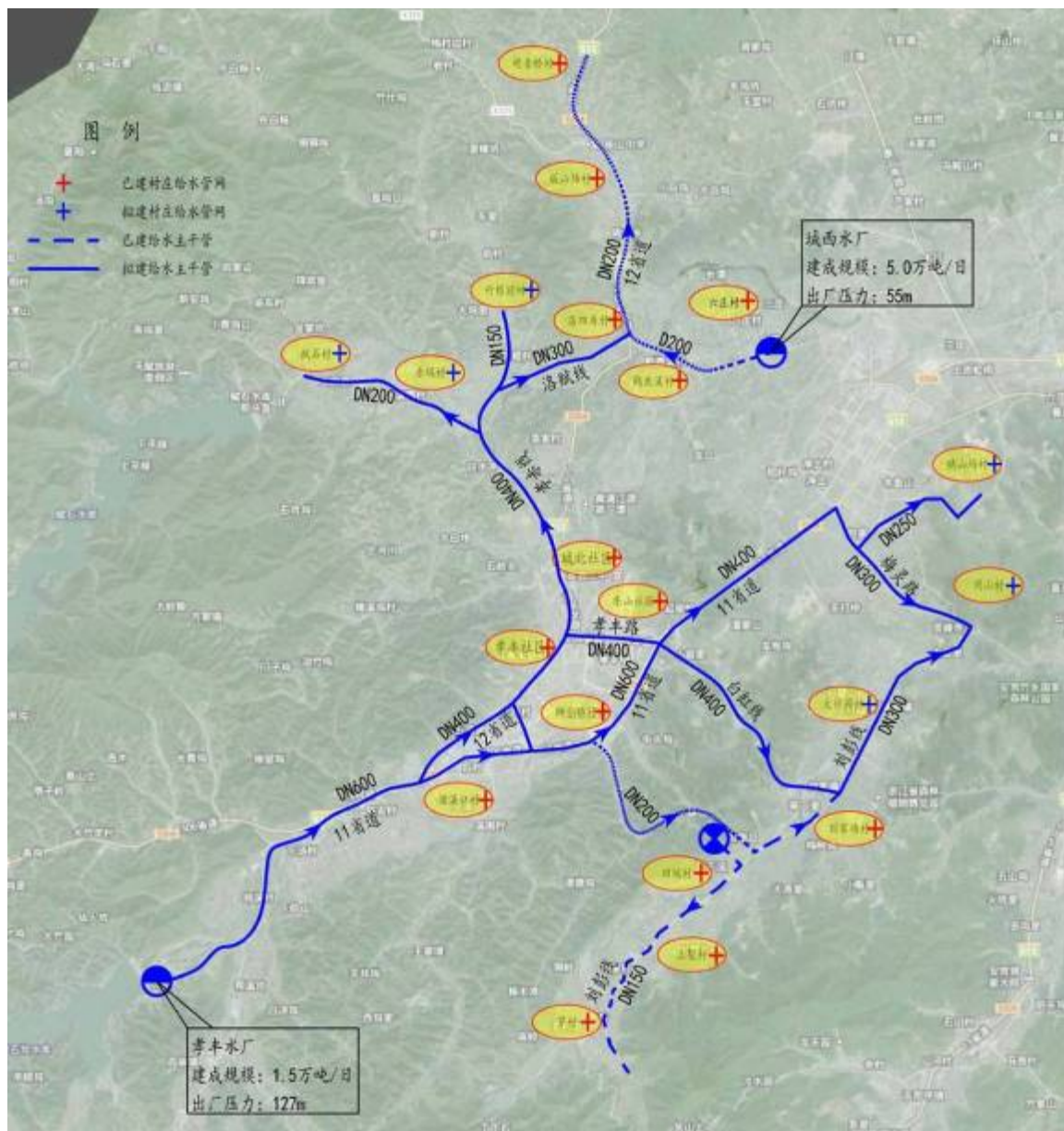


Figure 3.1-9 Construction Schematic Drawing of Water Supply System Scheme of Anji Xiaofeng District



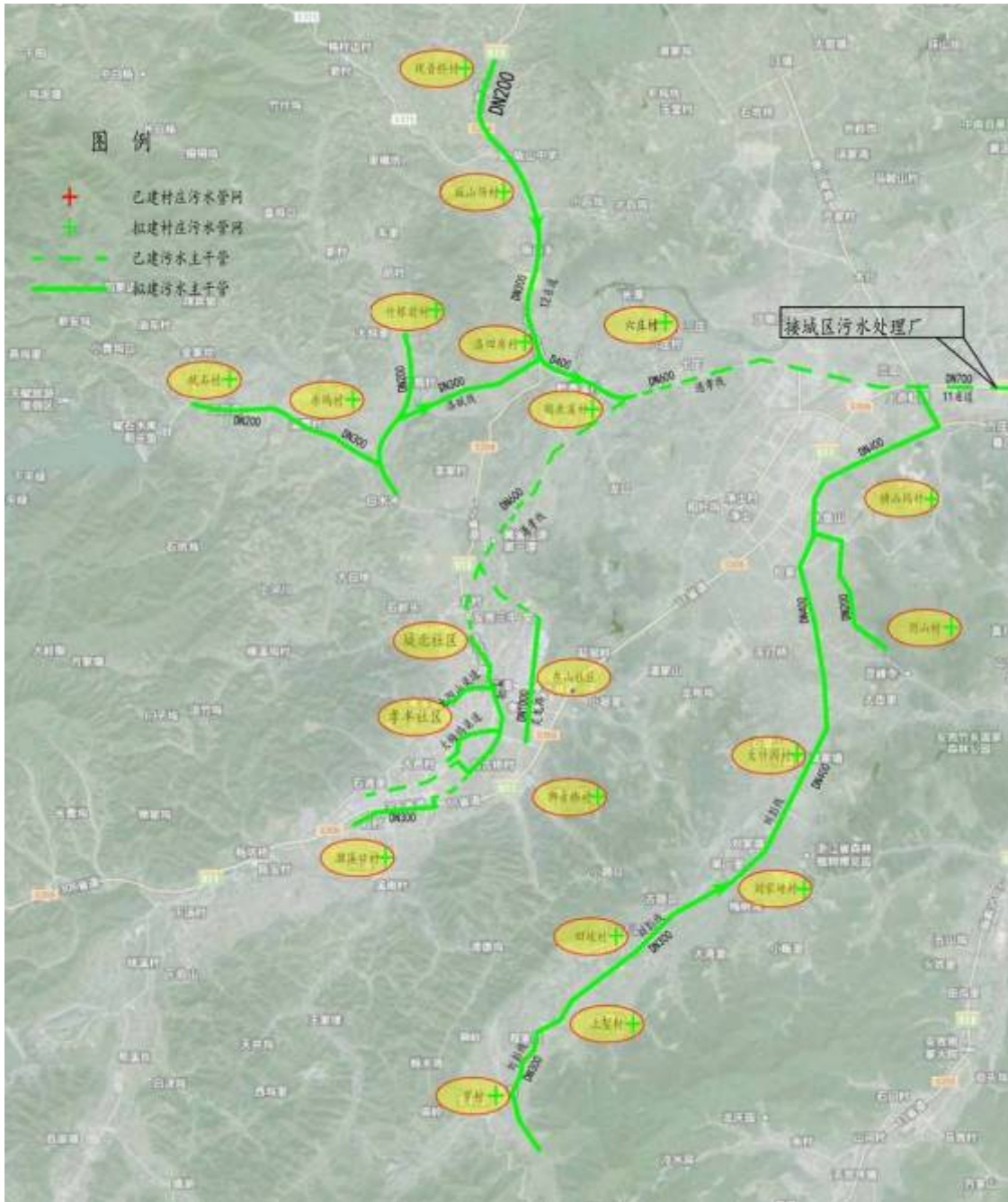


Figure 3.1-10 Construction Schematic Drawing of Drainage System of Anji Xiaofeng District



Figure 3.1-11 Construction Schematic Drawing of Water Supply System of Anji urban area





Figure 3.1-12 Schematic drawing of Drainage System of Anji Urban Area

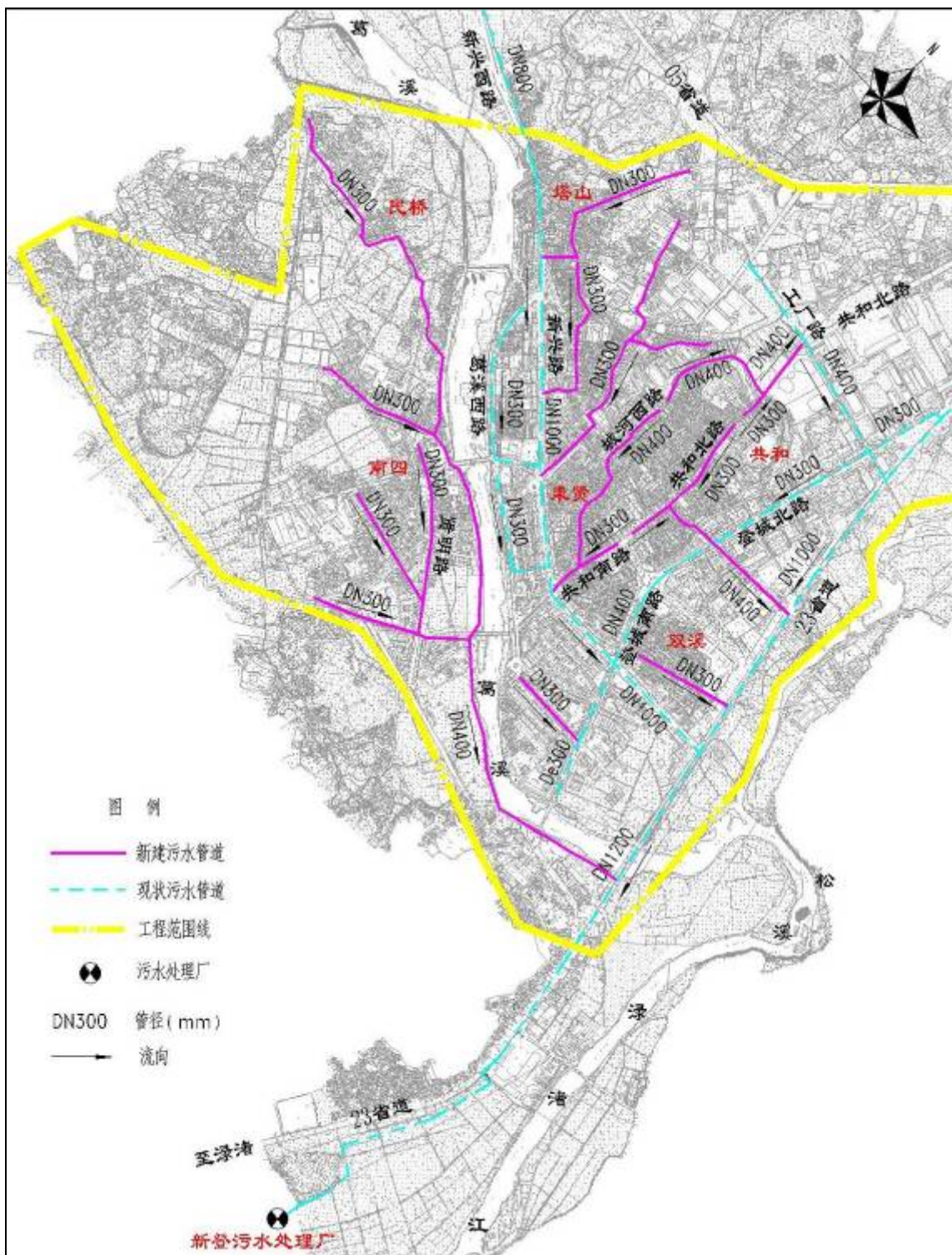


Figure 3.2-1 Layout Plan of Town Sewage Pipe Network of Xindeng Town, Fuyang City



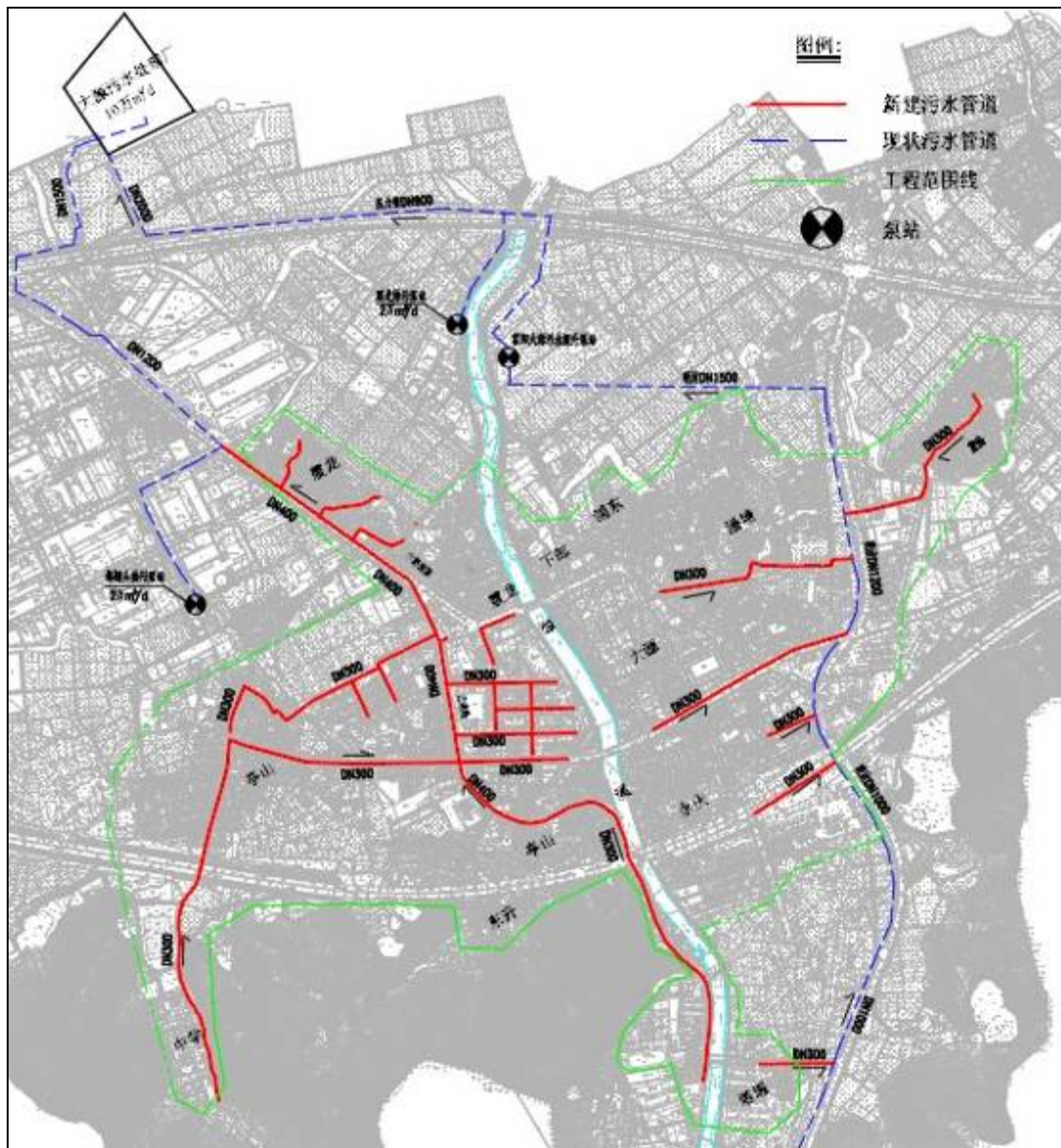


Figure 3.2-2 Layout Plan of Sewage Pipe Network in Dayuan Town, Fuyang City

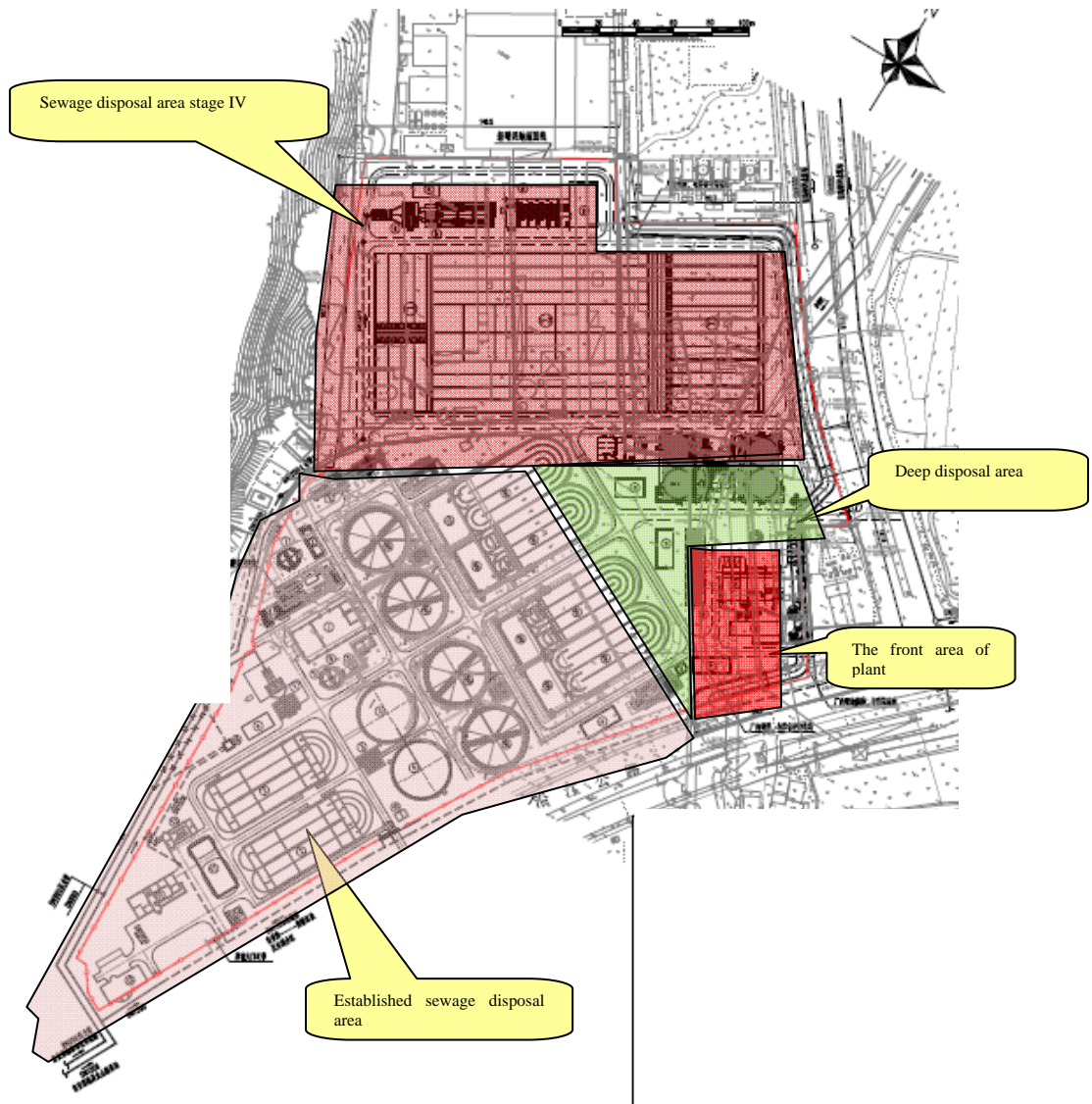


Figure 3.2-3 General Layout of Established Fuyang Sewage Disposal Plant and the Stage IV Project Plant Area

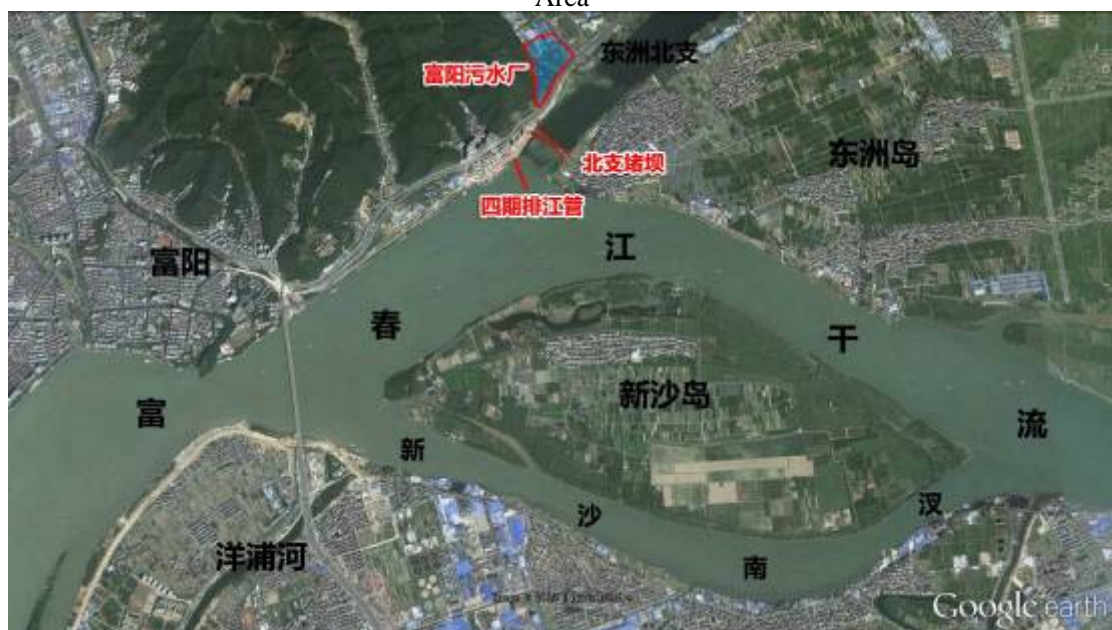


Figure 3.2-4 Location Schematic Diagram of Sewage Discharge Outlet of the Stage IV of Fuyang City



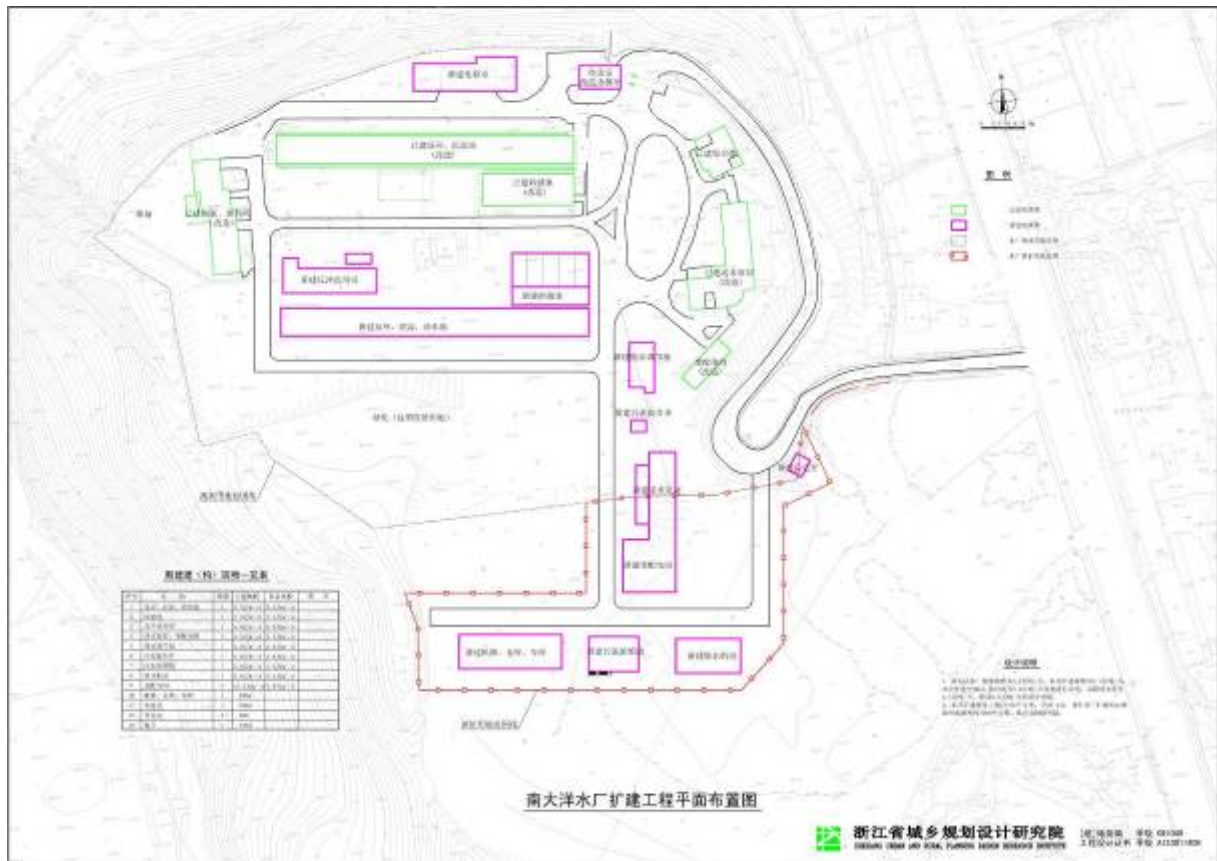


Figure 3.3-1 General Layout of Nandayang Water Plant of Longquan City



Figure 3.3-2 Layout Drawing of Water Supply Network of Longquan Urban Area



Figure 3.3-3 Layout Drawing of Sewage Pipe Network of Longquan Urban Area



Figure 3.3-4 Layout Drawing of Rainwater Pipe Network of Longquan Urban Area





Figure 3.3-5 Plant Area Arrangement Plan Water Plant of Anren Town, Longquan City

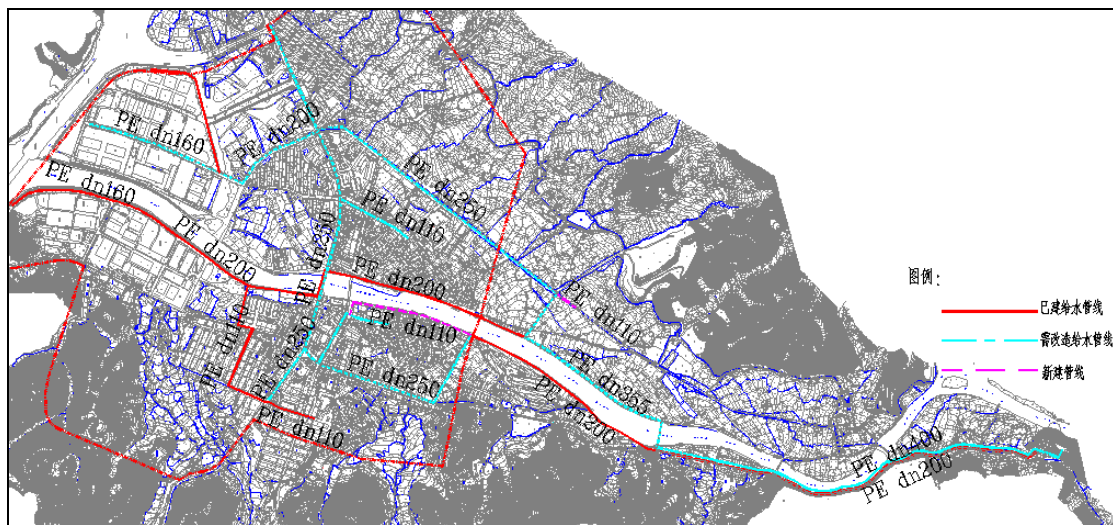


Figure 3.3-6 Layout Drawing of Water Supply Network of Anren Town, Longquan City





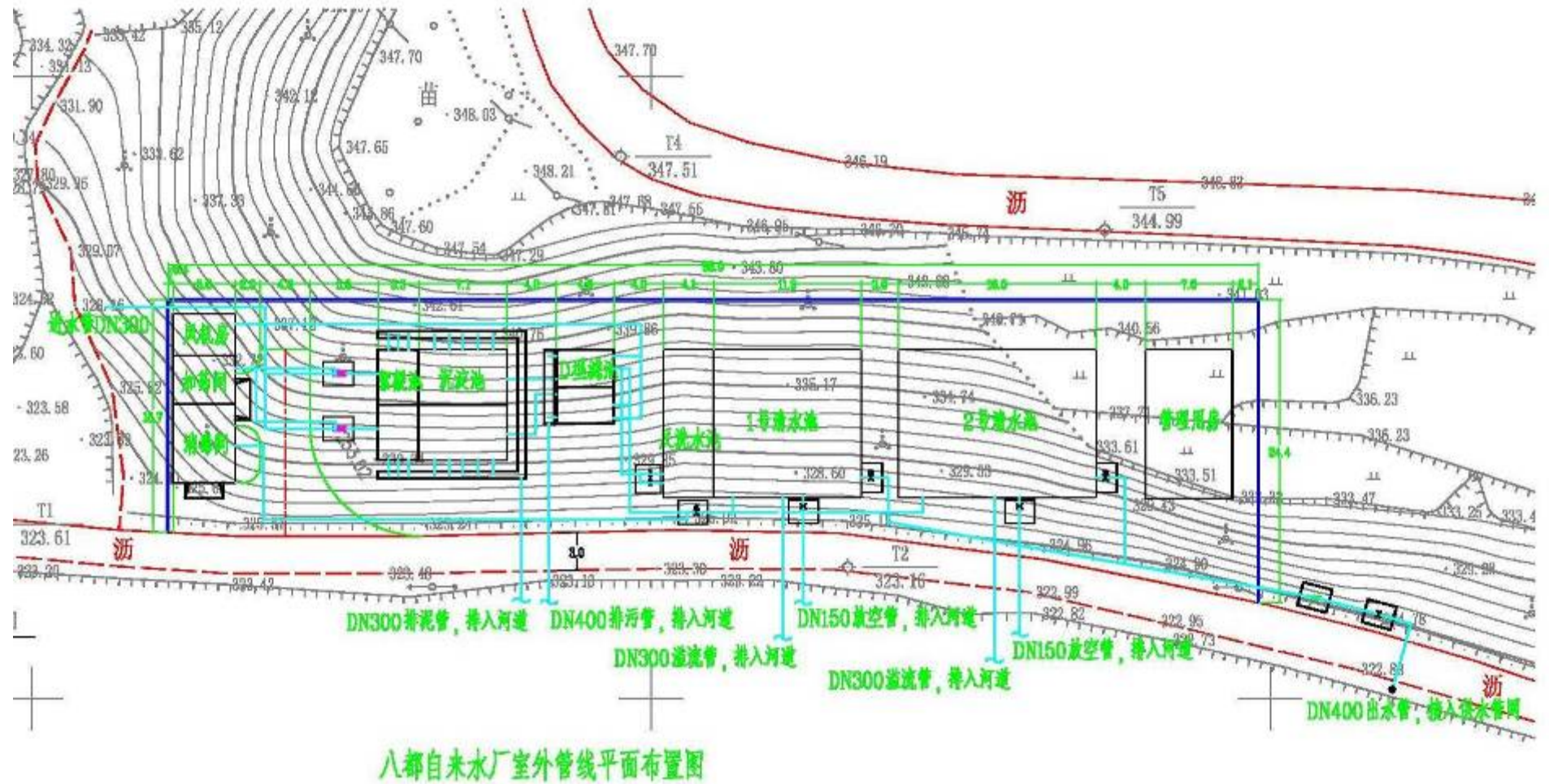


Figure 3.3-9 Plant Area Arrangement Plan of Water Plant of Badu Town, Longquan City





Figure 3.3-10 Layout Drawing of Water Supply Network of Badu Town, Longquan City



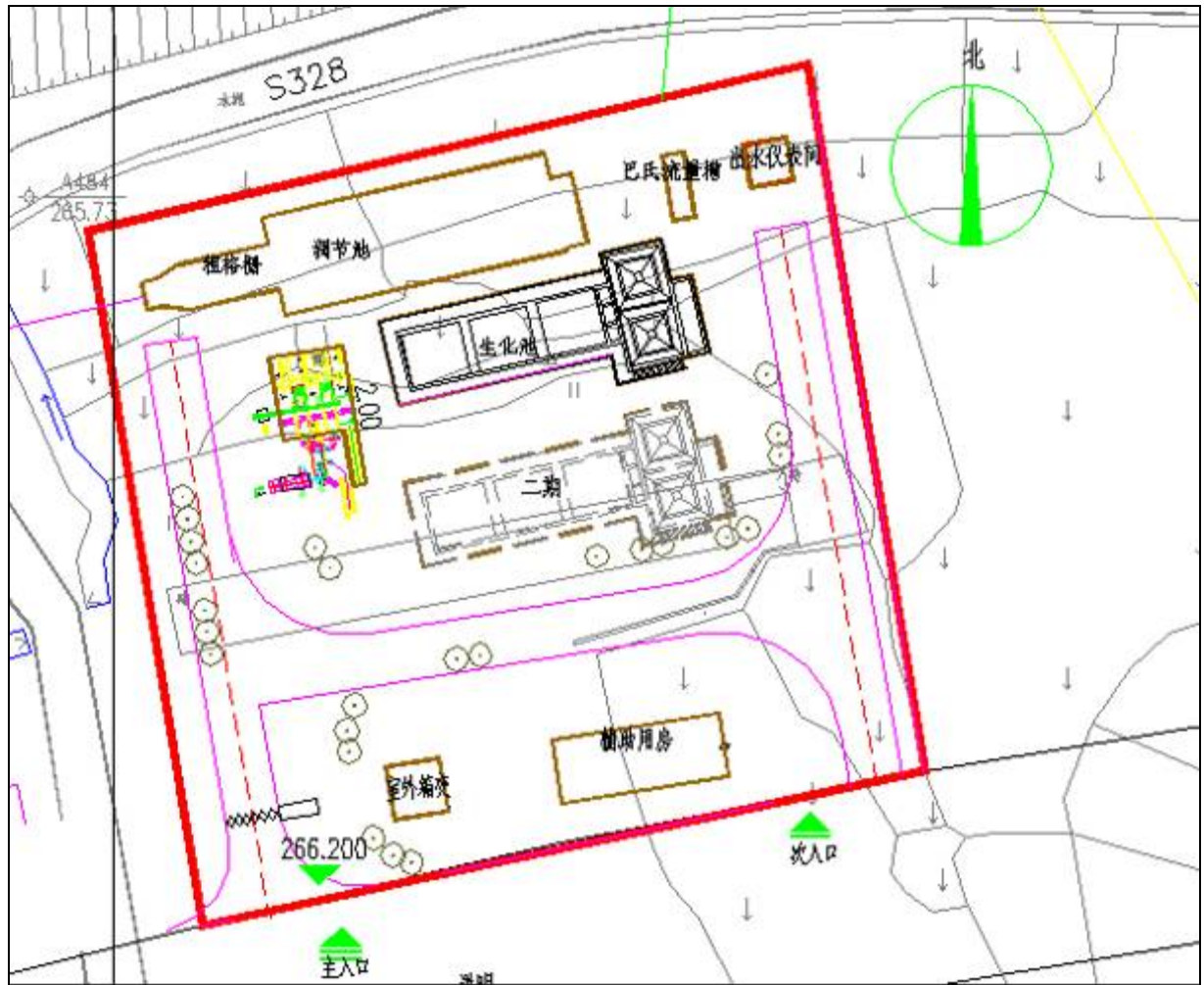


Figure 3.3-11 Layout Plan of Sewage Station of Badu Town, Longquan City

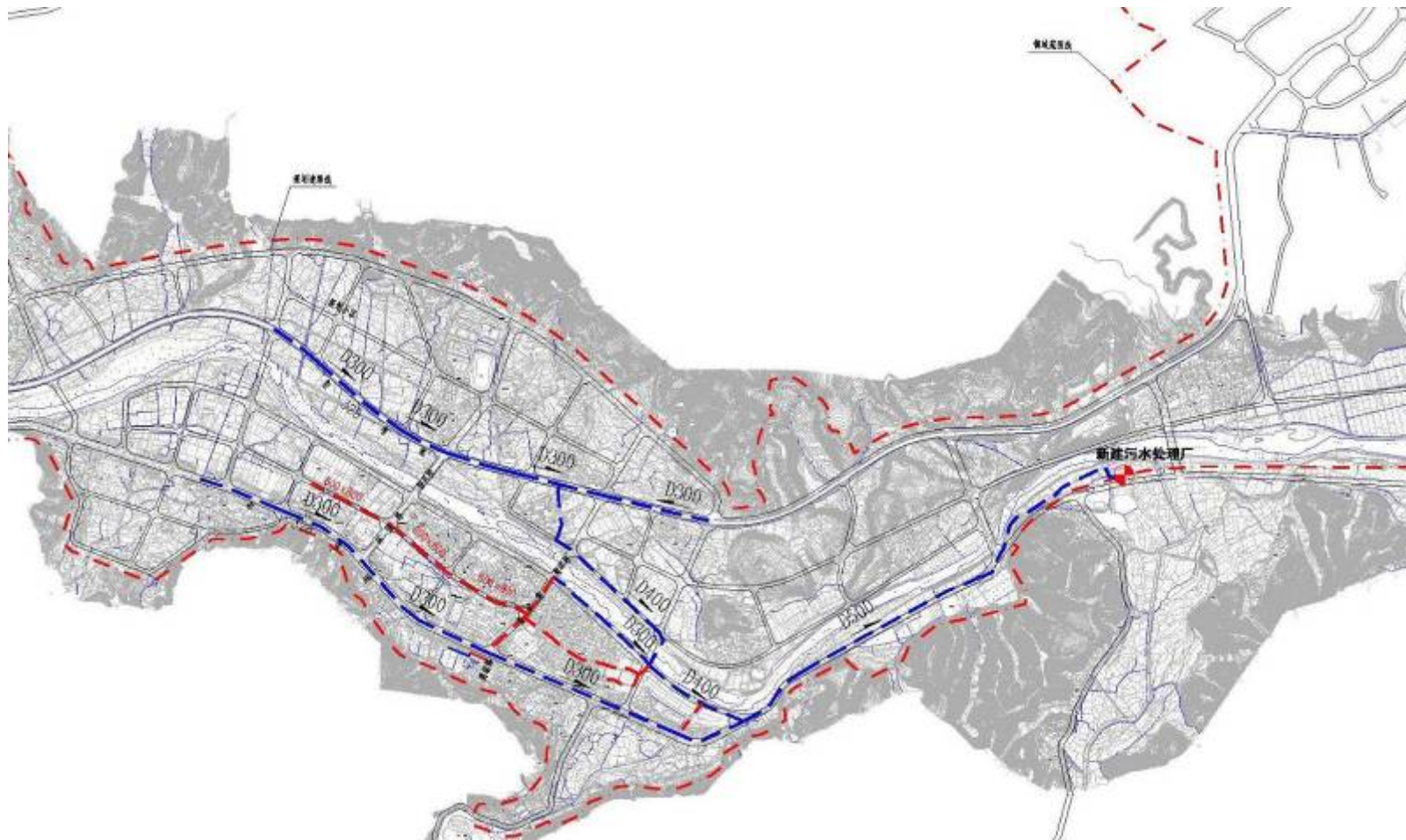


Figure 3.3-12 Layout Drawing of Sewage Pipe Network of Badu Town, Longquan City





Figure 3.3-13 Collection Diagram of Pipe Network of He Village, Longquan City

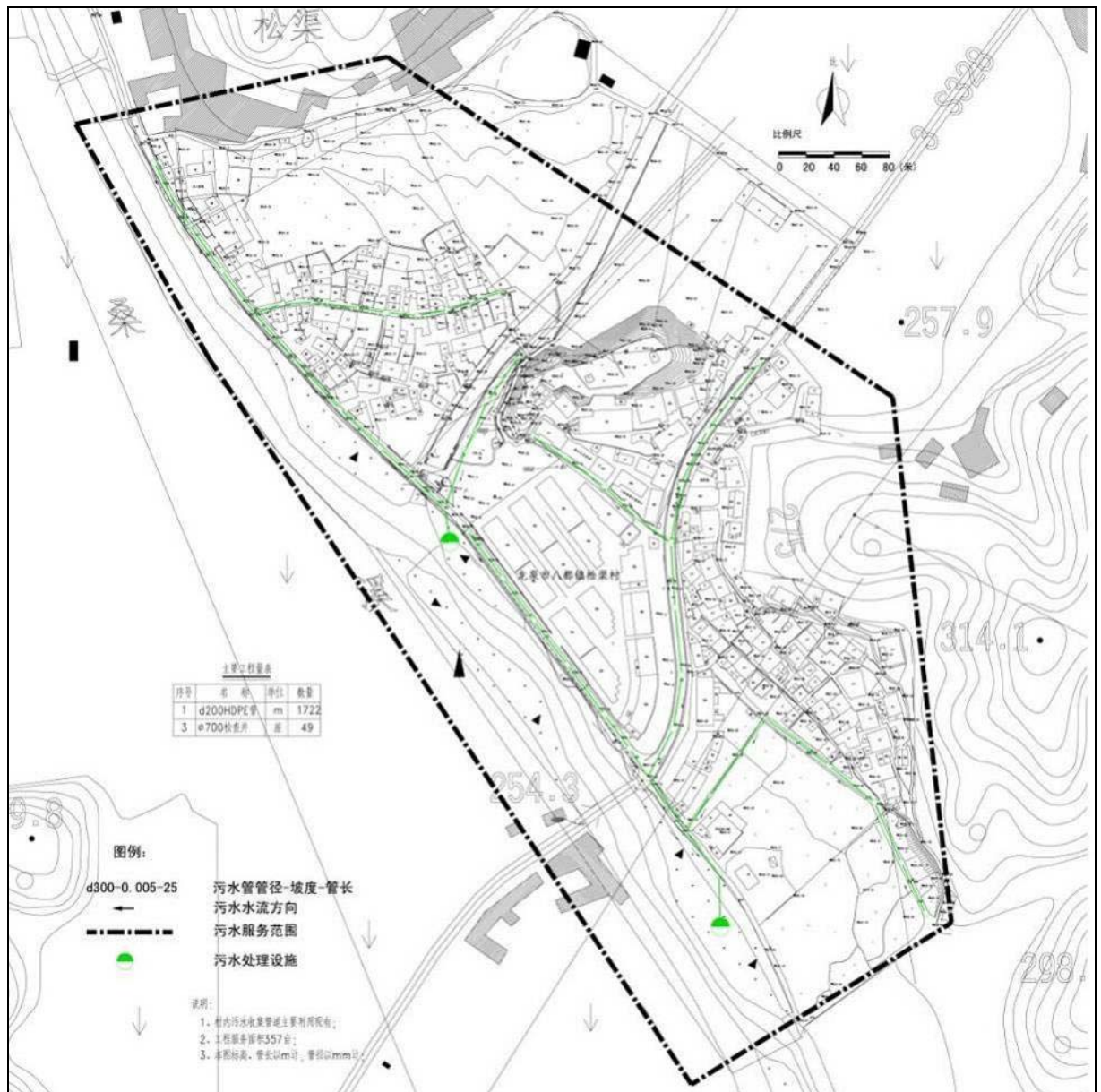


Figure 3.3-14 Collection Diagram of Pipe Network of Songqu Village, Longquan City



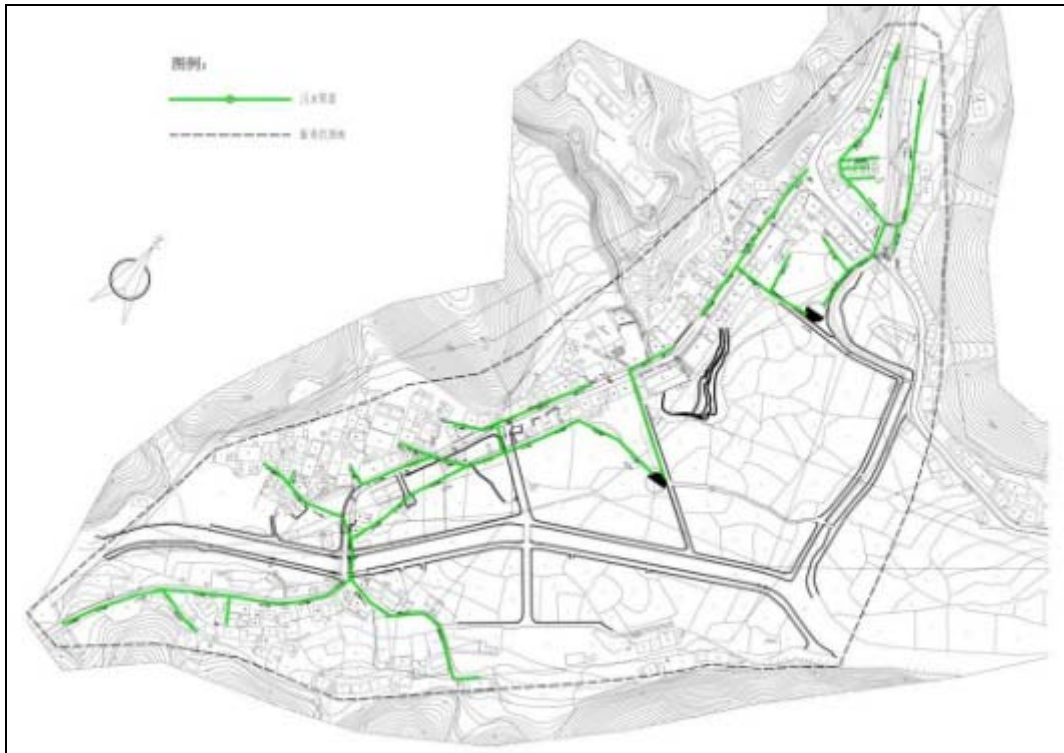


Figure 3.3-15 Collection Diagram of Pipe Network of Xiaohuangnan Village, Longquan City



Figure 3.3-16 Collection Diagram of Pipe Network of Shuita Village, Longquan City

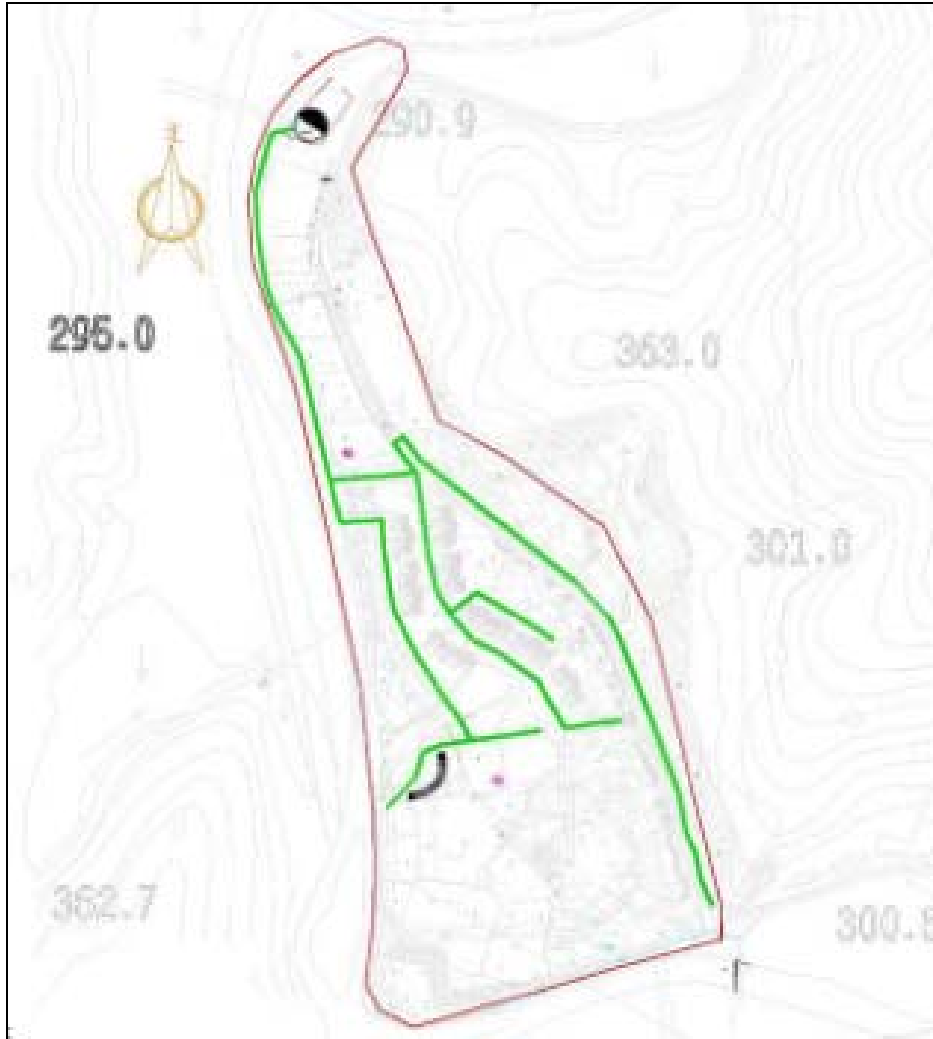


Figure 3.3-17 Collection Diagram of Pipe Network of Dasai Village, Longquan City



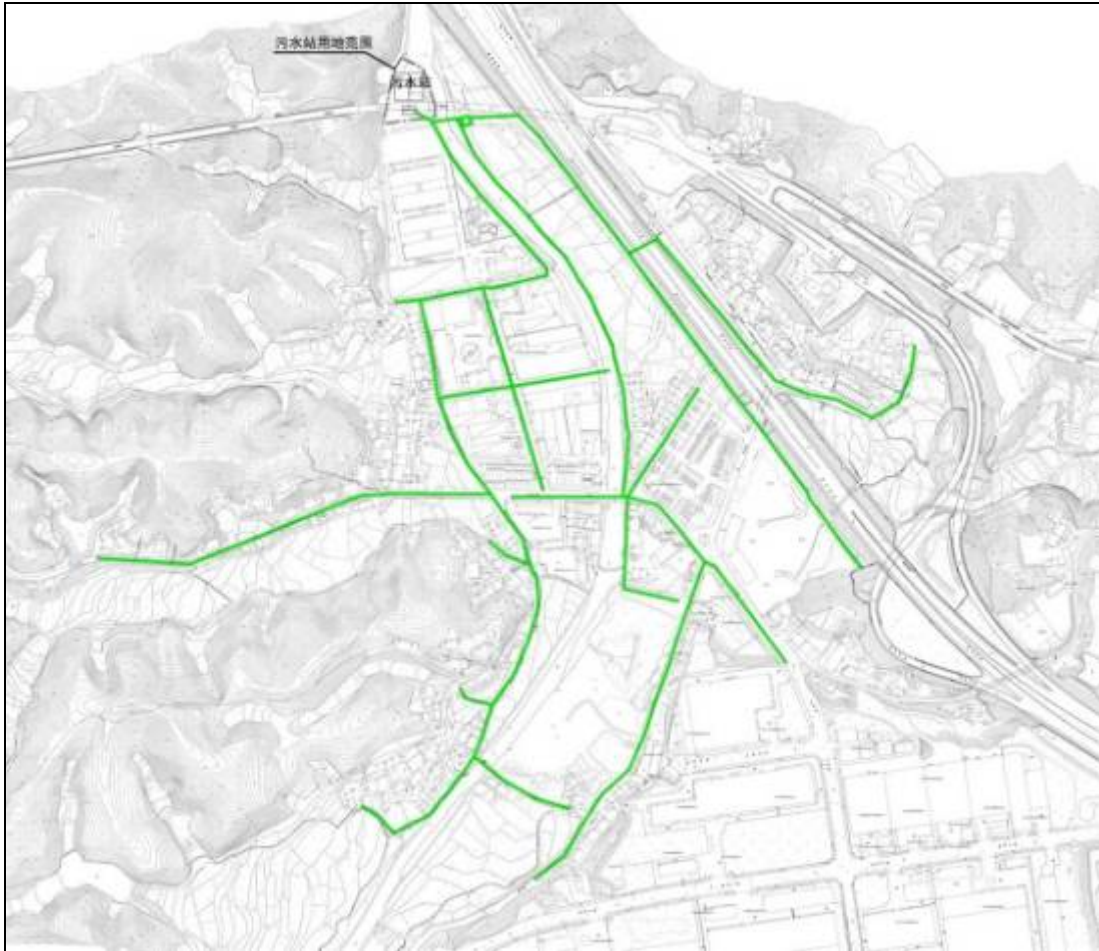


Figure 3.3-18 Collection Diagram of Pipe Network of Jibian and Shangwu Village, Longquan City

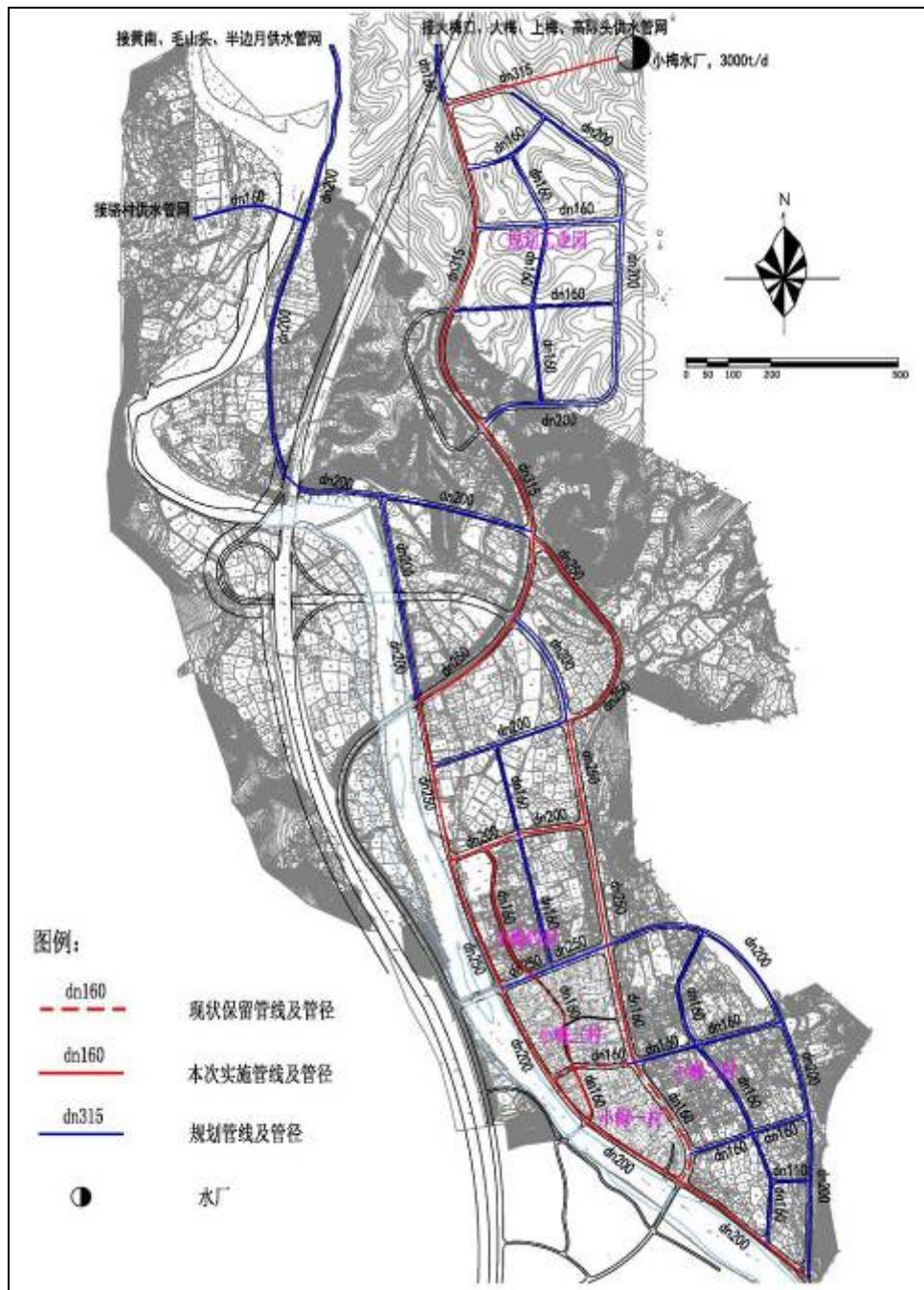


Figure 3.3-19 Layout Drawing of Water Supply Network of Xiaomei Town, Longquan City



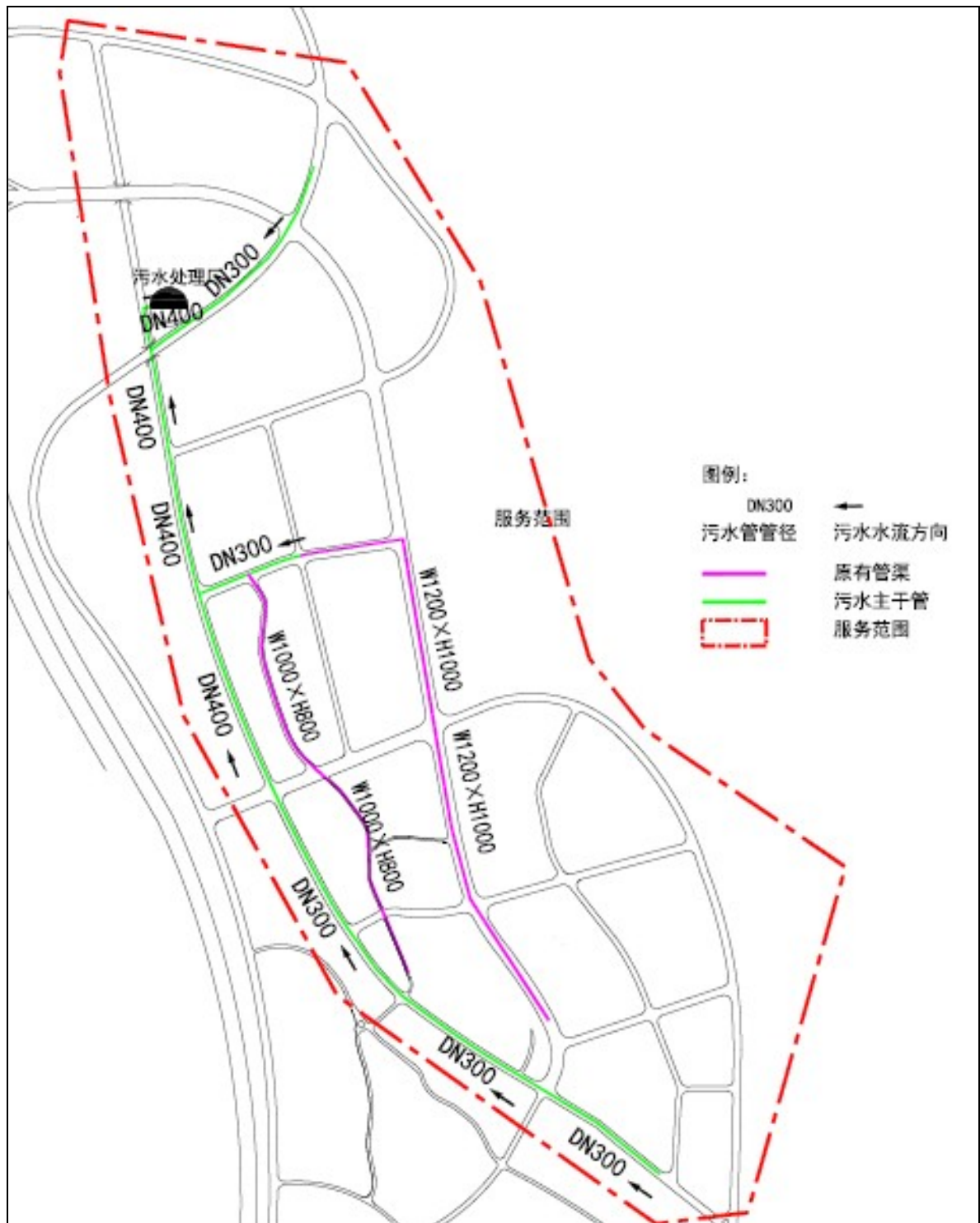


Figure 3.3-20 Layout Drawing of Sewage Pipe Network of Xiaomei Town, Longquan City

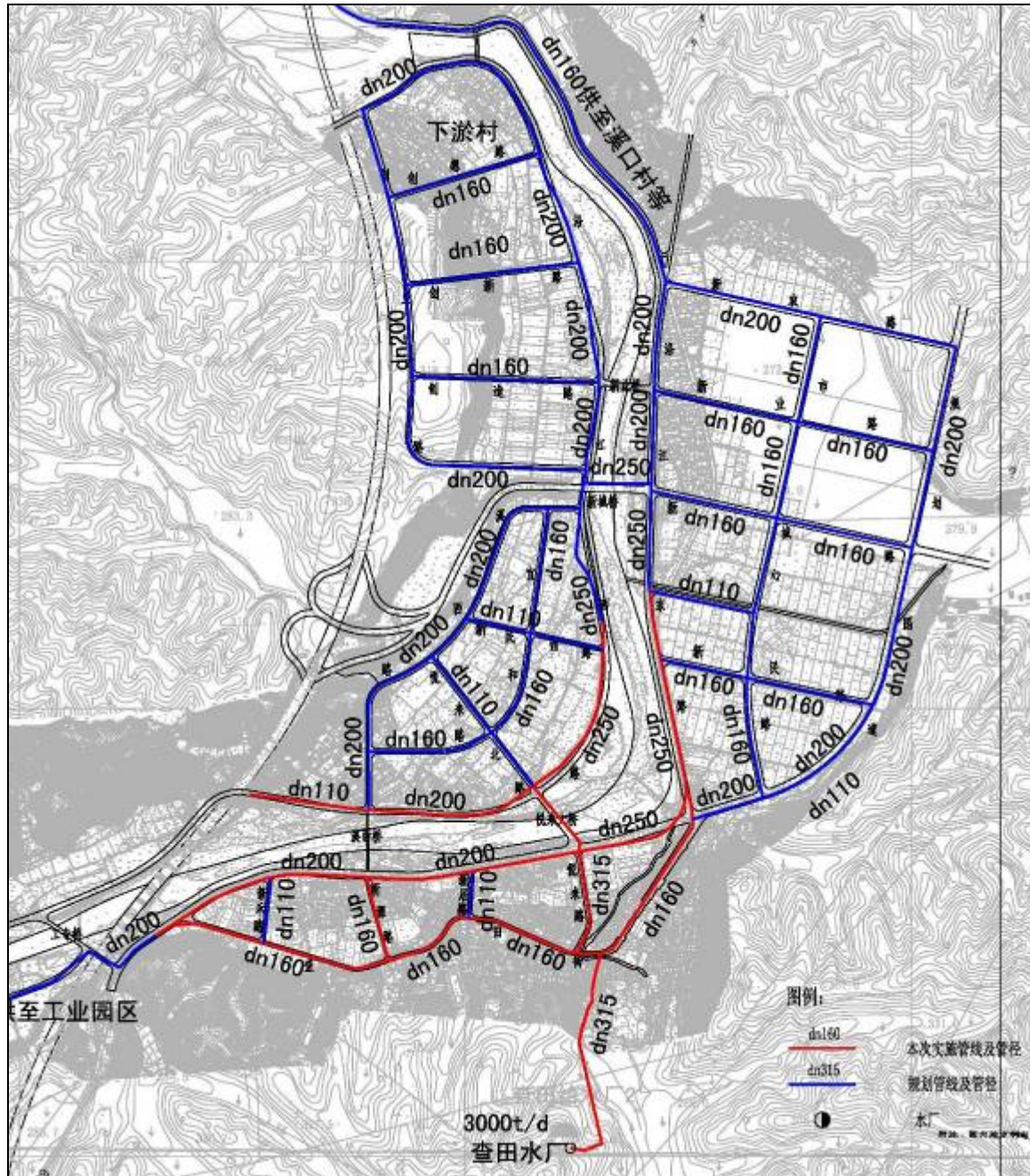


Figure 3.3-21 Layout Drawing of Water Supply Network of Chatian Water Plant of Longquan City

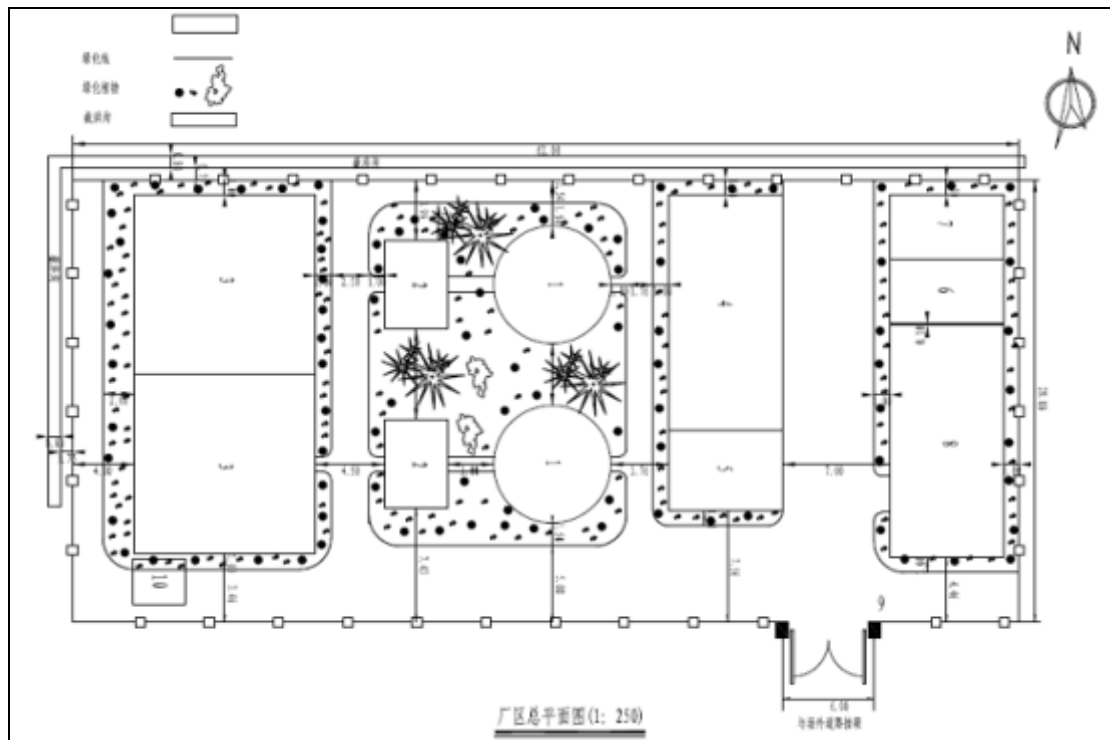


Figure 3.3-22 Plant Area Arrangement Plan of Water Plant of Lanju Town, Longquan City



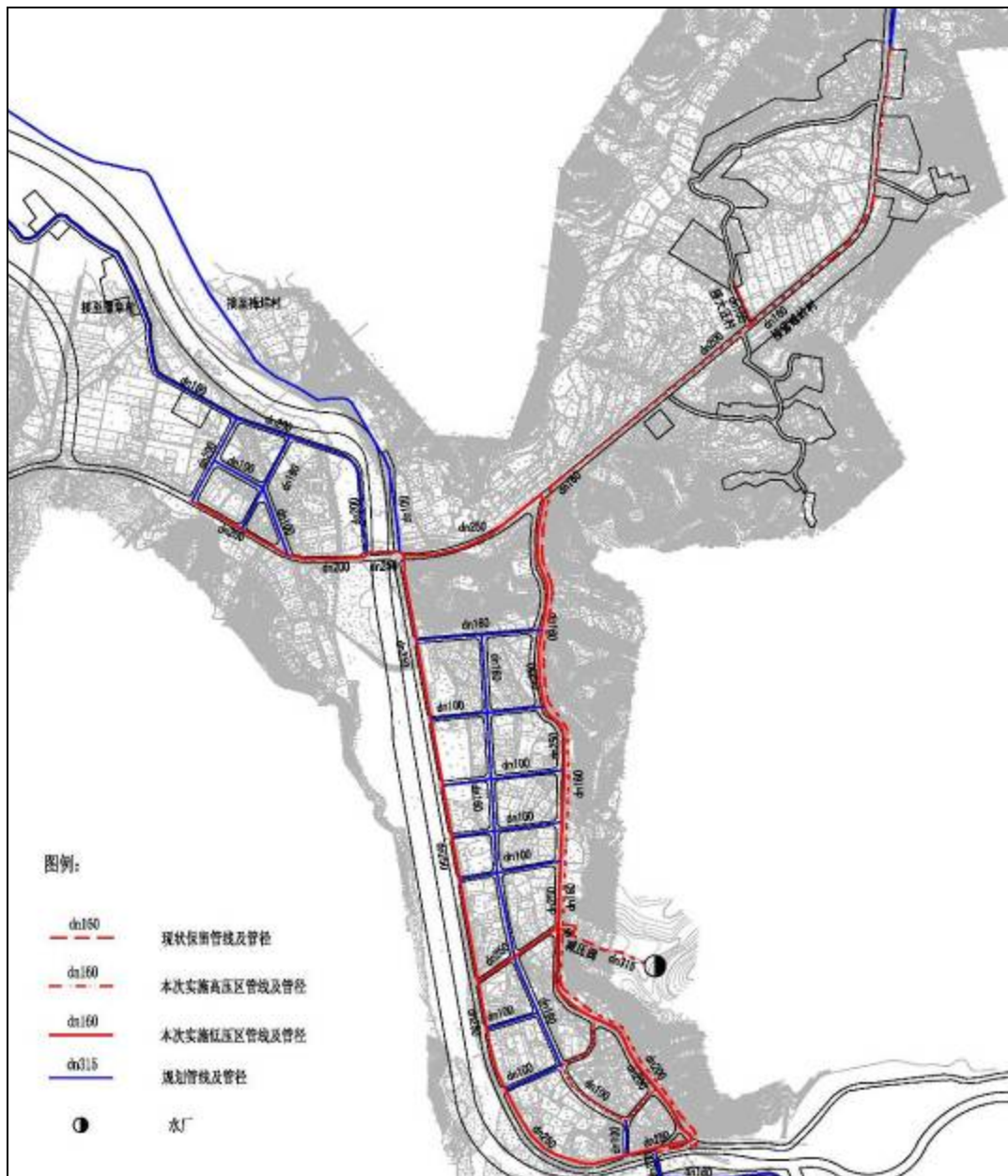


Figure 3.3-23 Layout Drawing of Water Supply Network of Lanju Town, Longquan City

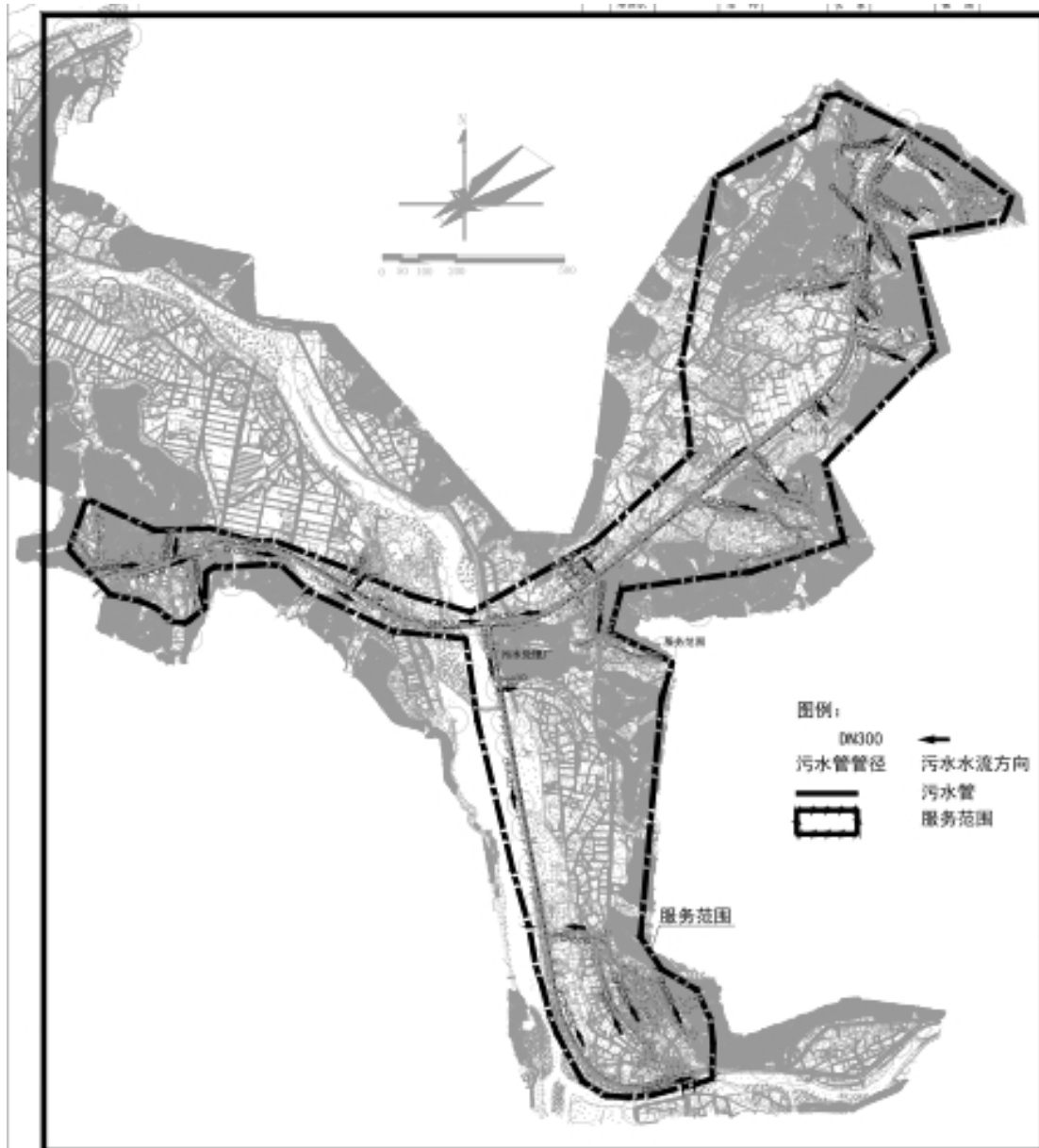


Figure 3.3-24 Layout Drawing of Sewage Pipe Network of Lanju Town, Longquan City

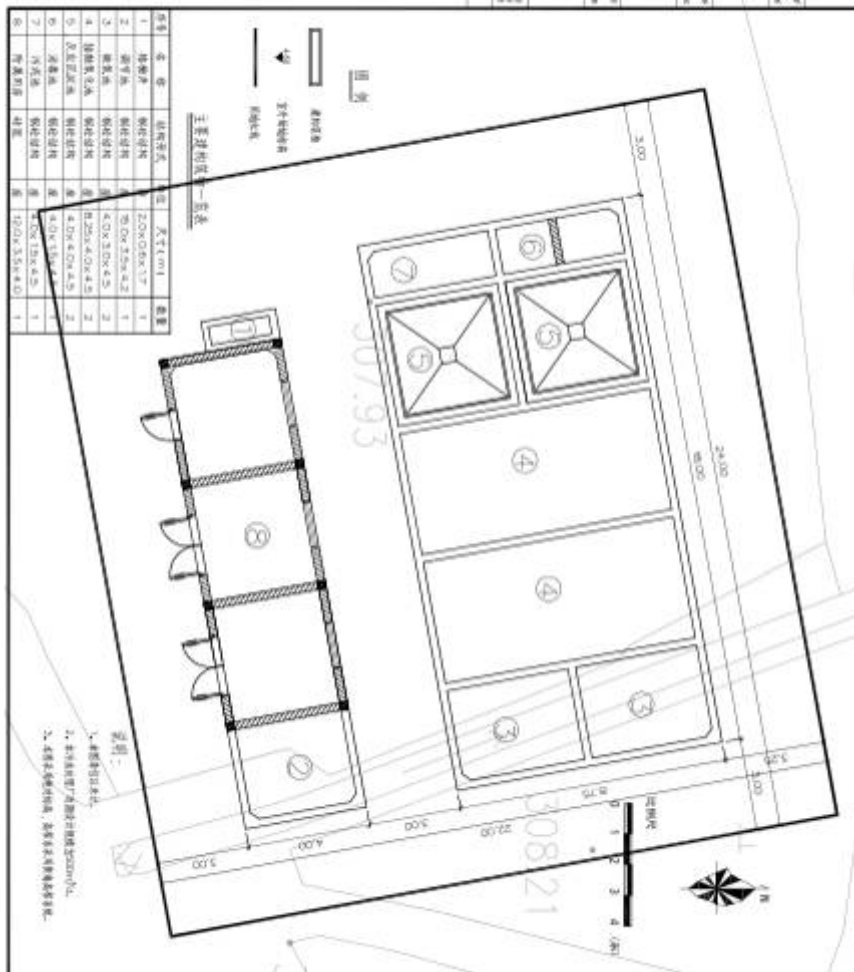


Figure 3.3-25 Layout Plan of Sewage Station of Lanju Town, Longquan City



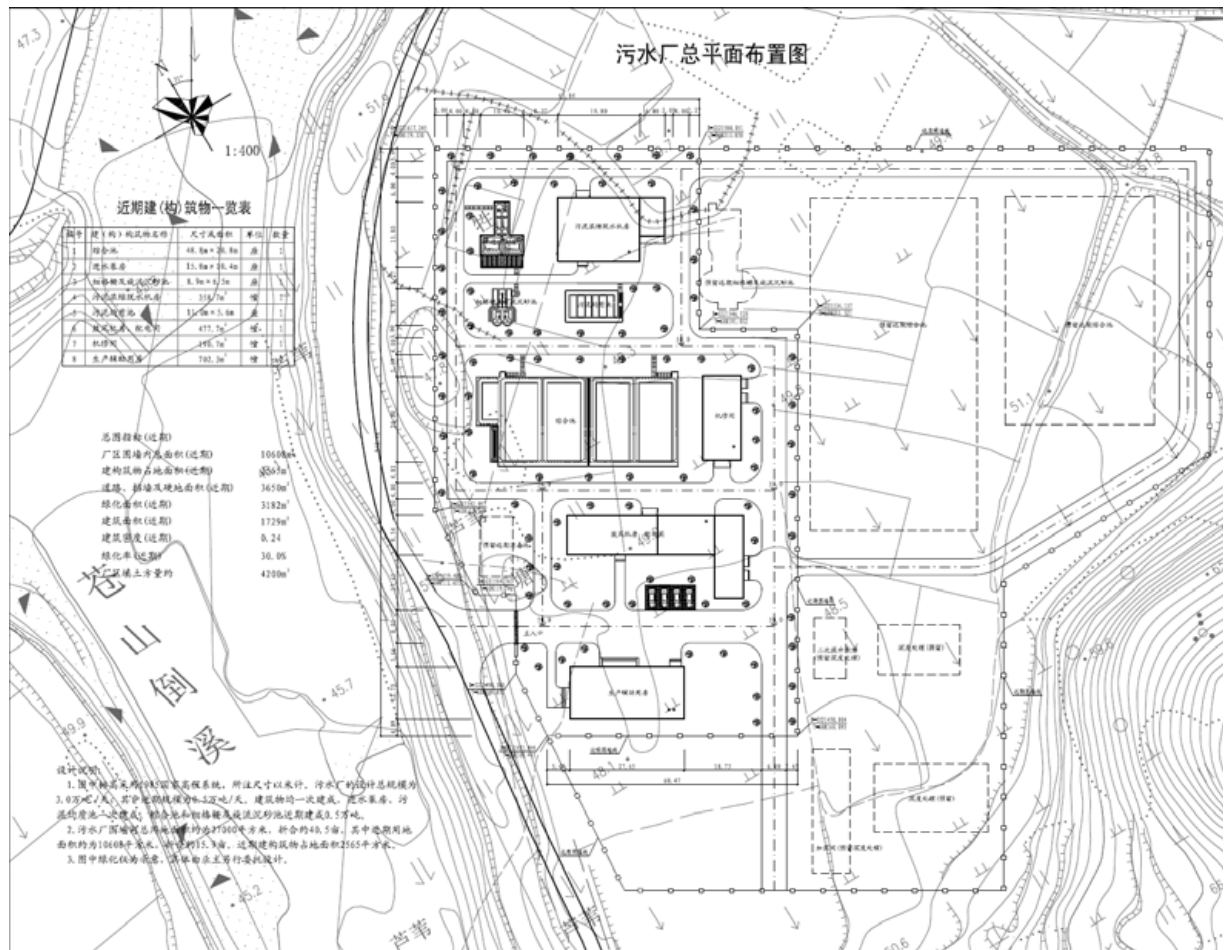


Figure 3.4-1 Layout Plan of Cangshan Sewage Disposal Plant of Tiantai County

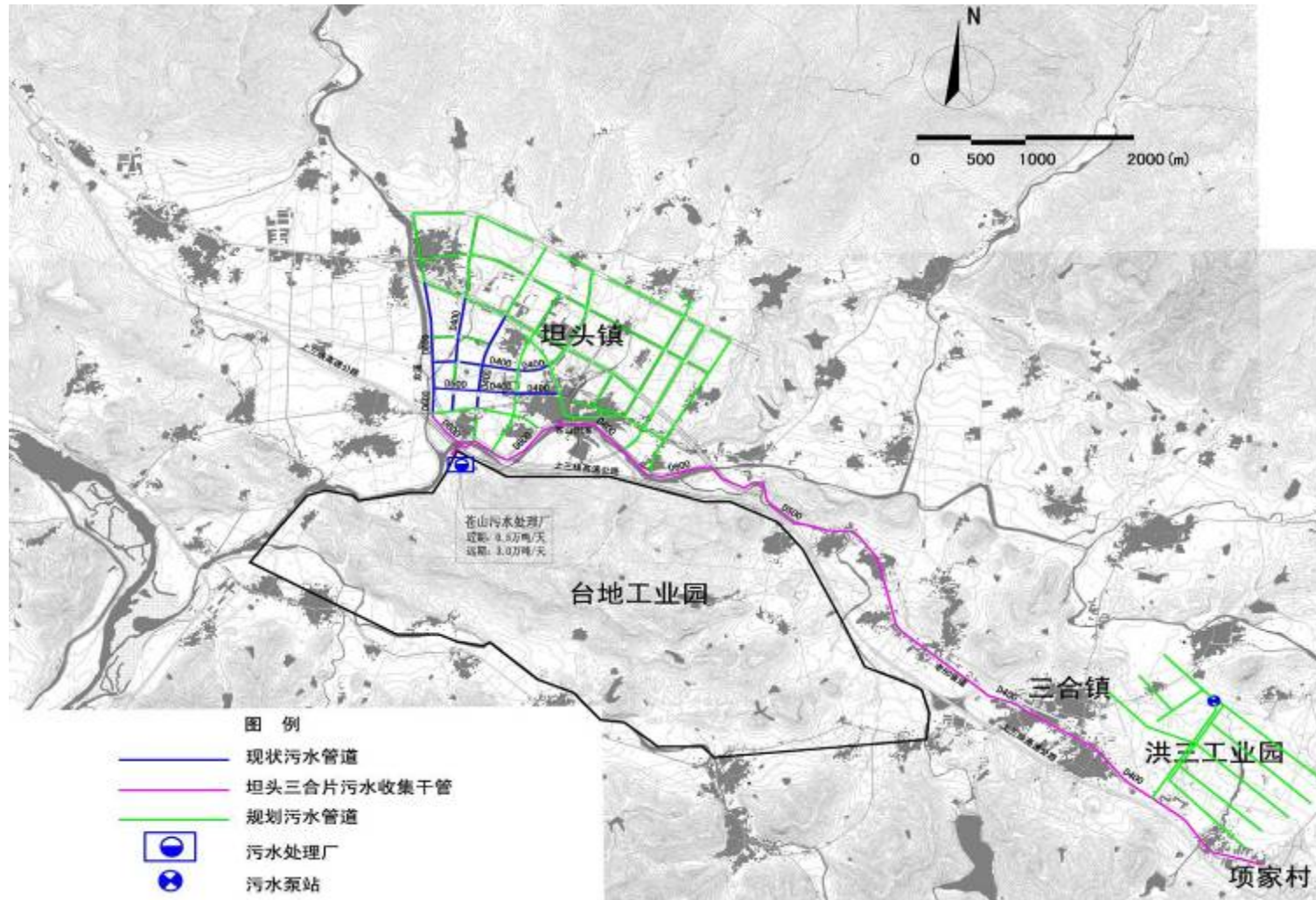


Figure 3.4-2 Layout Drawing of Tantou Sanhepian Sewage Collection System of Tiantai County

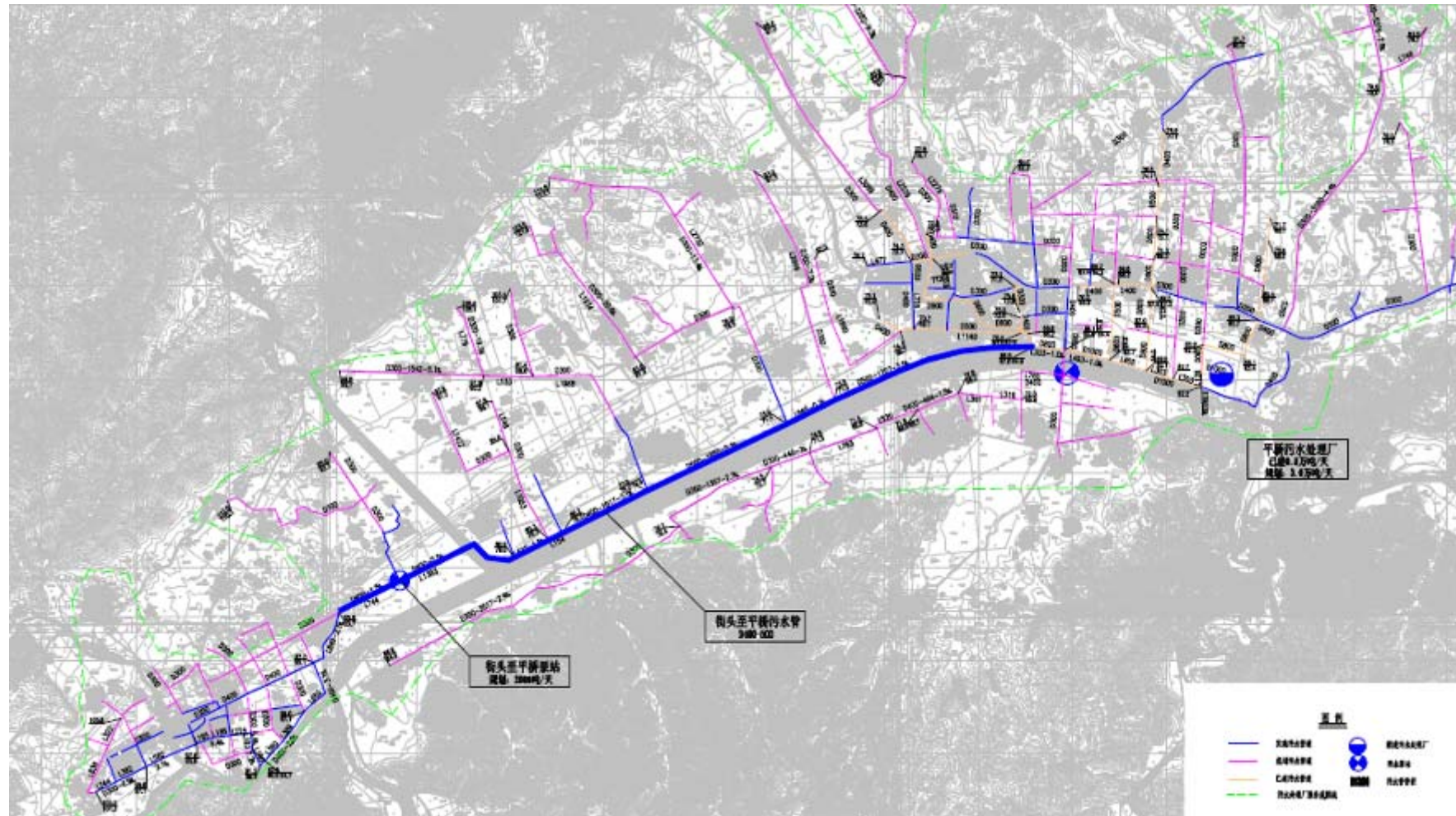


Figure 3.4-3 Sewage Piping Routing Drawing in West District of Tiantai Basin