

Final Initial Environmental Examination

July 2015

**BAN: Third Urban Governance and Infrastructure
Improvement (Sector) Project - Muktagacha Drains
Subproject (Phase 1)
UGIIP-III-I/MUKT/UT+DR/01/2014/Lot1-UT & Lot2
DR**

Prepared by the Local Government Engineering Department, Government of Bangladesh for the Asian Development Bank.

CURRENCY EQUIVALENTS

(as of July 2015)

Currency Unit	=	BDT
BDT1.00	=	\$0.0129
\$1.00	=	BDT77.775

ABBREVIATIONS

ADB	– Asian Development Bank
AP	– affected person
BWDB	– Bangladesh Water Development Board
DoE	– Department of Environment
DPHE	– Department of Public Health Engineering
EARF	– environmental assessment and review framework
ECA	– Environmental Conservation Act
ECC	– environmental clearance certificate
ECR	– Environmental Conservation Rules
EIA	– environmental impact assessment
EMP	– environmental management plan
ETP	– effluent treatment plant
FGD	– focus group discussion
GICDC	– Governance Improvement and Capacity Development Consultant
GRC	– grievance redressal cell
GRM	– grievance redress Mechanism
IEE	– initial environmental examination
LCC	– location clearance certificate
LGED	– Local Government Engineering Department
MDSC	– Management Design and Supervision Consultant
MLGRDC	– Ministry of Local Government, Rural Development, and Cooperatives
O&M	– operations and maintenance
PIU	– project implementation unit
PMO	– project management office
PPTA	– project preparatory technical assistance
REA	– rapid environmental assessment
RP	– resettlement plan
SPS	– Safeguard Policy Statement
ToR	– terms of reference

WEIGHTS AND MEASURES

ha	–	hectare
km	–	kilometer
m	–	meter
mm	–	millimeter

GLOSSARY OF BANGLADESHI TERMS

<i>crore</i>	–	10 million (= 100 lakh)
<i>ghat</i>	–	boat landing station
<i>hartal</i>	–	nationwide strike/demonstration called by opposition parties
<i>khal</i>	–	drainage ditch/canal
<i>khas, khash</i>	–	belongs to government (e.g. land)
<i>katcha</i>	–	poor quality, poorly built
<i>lakh, lac</i>	–	100,000
<i>madrasha</i>	–	Islamic college
<i>mahalla</i>	–	community area
<i>mouza</i>	–	government-recognized land area
<i>parashad</i>	–	authority (pourashava)
<i>pourashava</i>	–	municipality
<i>pucca</i>	–	good quality, well built, solid
<i>thana</i>	–	police station
<i>upazila</i>	–	sub district

NOTES

- (i) In this report, "\$" refers to US dollars.
- (ii) —BDT refers to Bangladeshi Taka

This initial environmental examination is a document of the borrower. The views expressed herein do not necessarily represent those of ADB's Board of Directors, Management, or staff, and may be preliminary in nature. Your attention is directed to the [“terms of use”](#) section on ADB's website.

In preparing any country program or strategy, financing any project, or by making any designation of or reference to a particular territory or geographic area in this document, the Asian Development Bank does not intend to make any judgments as to the legal or other status of any territory or area.



Asian Development Bank

Government of the People's Republic of Bangladesh
Local Government Division
Local Government Engineering Department

Name of Project :
Third Urban Governance and Infrastructure
Improvement Sector Project (UGIIP-III)

(39295 - 032 BAN)
TA - 8339 BAN

INITIAL ENVIRONMENTAL EXAMINATION
(IEE FOR DRAINS)

Pourashava : Muktagacha

Package No. : UGIIP-III-I/MUKT/UT+DR/01/2014

Joint Venture of



Hifab International AB, Sweden
KS Consultants Ltd., Bangladesh
BETS Consulting Services Ltd., Bangladesh

**F
I
N
A
L**

**R
E
P
O
R
T**

**29 October
2014**

CONTENTS

	Page
EXECUTIVE SUMMARY	
I. INTRODUCTION	1
II. POLICY, LEGAL, AND ADMINISTRATIVE FRAMEWORK	2
A. ADB Policy	2
B. National Laws	3
C. Government of Bangladesh Environmental Assessment Procedures	4
III. DESCRIPTION OF THE PROJECT	5
A. The Study Area	5
B. Existing Condition and Need for the Project	5
C. Proposed Components	6
D. Implementation Schedule	7
IV. DESCRIPTION OF THE ENVIRONMENT	11
A. Methodology Used for the Baseline Study	11
B. Physical Characteristics	12
C. Biological Characteristics	13
D. Socioeconomic Characteristics	13
E. Historical, Cultural and Archaeological Characteristics	15
V. ANTICIPATED ENVIRONMENTAL IMPACTS AND MITIGATION MEASURES	16
A. Methodology	16
B. Screening out Areas of No Significant Impact	16
C. Anticipated Impacts and Mitigation Measures – Planning and Design Phase	17
D. Anticipated Impacts and Mitigation Measures – Construction Phase	19
E. Anticipated Impacts and Mitigation Measures – Operations and Maintenance Phase	26
F. Cumulative Impact Assessment	29
VI. INFORMATION DISCLOSURE, CONSULTATION, AND PARTICIPATION	31
A. Public Consultation Conducted	31
B. Future Consultation and Disclosure	31
VII. GRIEVANCE REDRESS MECHANISM	32
VIII. ENVIRONMENTAL MANAGEMENT PLAN	34
A. Institutional Arrangement	35
B. Safeguard Implementation Arrangement	35
C. Institutional Capacity Development Program	65
D. Staffing Requirement and Budget	66
IX. MONITORING AND REPORTING	71
X. CONCLUSION AND RECOMMENDATIONS	72

Appendixes

Appendix 1: Rapid Environmental Assessment Checklist.....	74
Appendix 2: Environmental Standards And Application Fees	77
Appendix 3: Sample Outline Spoils Management Plan.....	79
Appendix 4: Sample Outline Traffic Management Plan	80
Appendix 5: Records Of Public Consultations And Fgds	90
Appendix 6: Sample Grievance Registration Form.....	95
Appendix 7: Sample Semi-Annual Reporting Format	96

EXECUTIVE SUMMARY

1. After the successful implementation of the First and Second Urban Governance and Infrastructure Improvement Projects (UGIIP I and II)¹ in 74 selected *pourashavas*, the Local Government Engineering Department (LGED) within the Ministry of Local Government, Rural Development and Cooperatives (MLGRDC) with the financial assistance of Asian Development Bank (ADB) have planned to implement the third phase of the project titled the Third Urban Governance and Infrastructure Improvement Project (UGIIP-3) in selected 30 *pourashavas* over a period of 6 years (2014 to 2020).
2. The impact will be improved living environment in project towns. The outcome will be improved municipal service delivery and urban governance in project towns. Project towns are pre-selected 30 towns to be supported in an integrated manner under the project.
3. A sector-lending approach will be used for the project as it has been well established and successfully practiced in the UGIIP I and II.
4. The Local Government Engineering Department (LGED) and the Department of Public Health Engineering (DPHE), both under the Local Government Division (LGD) of the Ministry of Local Government, Rural Development and Cooperatives (MLGRD&C) and having extensive experience in managing urban and water supply projects financed by ADB, will be the executing agencies of the project.
5. The Muktagacha drainage subproject is one of the subprojects proposed under UGIIP-3. ADB requires the consideration of environmental issues in all aspects of the Bank's operations, and the requirements for environmental assessment are described in ADB's Safeguard Policy Statement (SPS, 2009). This is the draft Initial Environmental Examination (IEE) based on the feasibility study and preliminary engineering designs prepared during project preparation. This IEE will be finalized during detailed design stage to reflect any changes and latest subproject designs.
6. **Categorization.** An environmental assessment using ADB's Rapid Environmental Assessment (REA) checklist for drainage and flood control (**Appendix 9**) was conducted and results of the assessment show that the subproject is unlikely to cause significant adverse impacts. Muktagacha drainage subproject is classified as environmental category B as per ADB SPS. This initial environmental examination (IEE) has been prepared in accordance with ADB SPS's requirements for environment category B projects and provides mitigation and monitoring measures to ensure no significant impacts as a result of the subproject.
7. As per Government of Bangladesh Environment Conservation Act, 1995 (ECA, 1995) and Environment Conservation Rules (ECR, 1997), Muktagacha drainage subproject is

¹ The Government of Bangladesh with the assistance of ADB has introduced a system whereby funds/loans for development are disbursed in a phased manner based on the successful accomplishment by the recipient *pourashavas* of a set of performance-criteria in the area of urban governance. UGIIP I and II reflect this approach which aims to incentivize participating *pourashavas* to become well-managed and maintained towns in a sustainable way through systems of governance ensuring citizen's participation and inclusion of women, poor and the minority groups in *pourashava* activities. UGIIP I targeted for 27 and UGIIP II for 47 *pourashavas*. The subprojects were (i) water supply (ii) sanitation, (iii) solid waste management, (iv) urban drainage, (v) urban transport & communication and (vi) public use facilities.

categorized as “red” and location clearance certificate (LCC) and environmental clearance certificate (ECC) must be obtained from the DoE.

8. **Subproject scope.** Investments under this subproject include construction of 4.818 kilometers (km) of drainage network within the core area of the *pourashava*.

9. **Implementation arrangements.** Local Government Engineering Department (LGED) and Department of Public Health Engineering (DPHE) are the executing agencies (EA). LGED is responsible for providing support and guidance to *pourashavas* concerning performance criteria and *pourashava* development planning. DPHE will provide support in water supply and sanitation schemes. Implementation activities will be overseen by a Project Management Office (PMO). The participating *pourashavas* are the implementing agencies (IA), with a project implementation unit (PIU) within the *pourashava* structure. Consultant teams² are responsible for (i) detailed engineering design, contract documents preparation and safeguards facilitation; (ii) project management and administration support; (iii) assistance in supervising construction; (iii) strengthening of local governance, conducting required studies/surveys and (iv) awareness raising on behavioral change in water, sanitation and solid waste management activities.

10. **Description of the environment.** Subproject components are located in Muktagacha urban area or in its immediate surroundings which were developed into urban land uses. The subproject sites are located in existing right of ways (ROWs) and government-owned land. There are no protected areas, wetlands, mangroves, or estuaries in or near the subproject location. There are no forest areas within or near Muktagacha.

11. **Environmental management.** An environmental management plan (EMP) is included as part of this IEE, which includes (i) mitigation measures for environmental impacts during implementation; (ii) an environmental monitoring program, and the responsible entities for mitigating, monitoring, and reporting; (iii) public consultation and information disclosure; and (iv) a grievance redress mechanism. A number of impacts and their significance were reduced through mitigation measures in the preliminary design stage. The EMP will form part of the civil work bidding and contract documents.

12. Locations and siting of the proposed infrastructures were considered to further reduce impacts. The concepts considered in design of the Muktagacha drainage subproject are: (i) locating facilities on government-owned land to avoid the need for land acquisition and relocation of people; (ii) taking all possible measures in design and selection of alignment to avoid resettlement impacts; (iii) avoiding where possible locations that will result in destruction/disturbance to historical and cultural places/values; (iv) avoiding tree-cutting where possible; (v) ensuring all planning and design interventions and decisions are made in consultation with local communities and reflecting inputs from public consultation and disclosure for site selection.

13. During the construction phase, impacts mainly arise from (i) disturbance of residents, businesses, and traffic; (ii) need to manage excess construction materials and spoils; and (iii) community and workers health and safety. These are common impacts of construction in urban areas, and there are well developed methods for their mitigation. Measures such as conducting work in lean season and minimizing inconvenience by best construction methods will be

² Consultant teams are composed of Management Design and Supervision Consultants (MDSC) and Governance Improvement and Capacity Development Consultants (GICDC).

employed. Traffic management will be necessary during excavation works on busy roads. In the operational phase, all facilities and infrastructure will operate with routine maintenance, which should not affect the environment. Facilities will need to be repaired from time to time, but environmental impacts will be much less than those of the construction period as the work will be infrequent, affecting small areas only.

14. Mitigation measures have been developed to reduce all negative impacts to acceptable levels and will be assured through a program of environmental monitoring. The monitoring program will include observations on- and off-site, document checks, and interviews with workers and beneficiaries. The PMO will submit semi-annual monitoring reports to ADB which will include a detailed review of EMP implementation, including corrective actions taken.

15. **Consultation, disclosure and grievance redress.** The stakeholders were involved in developing the IEE through discussions on-site and public consultation, after which views expressed were incorporated into the IEE and in the planning and development of the subproject. The IEE will be made available at public locations in the *pourashava* and will be disclosed to a wider audience via the ADB and LGED project websites. The consultation process will be continued and expanded during project implementation to ensure that stakeholders are fully engaged in the project and have the opportunity to participate in its development and implementation. A grievance redress mechanism is described within the IEE to ensure any public grievances are addressed quickly.

16. **Monitoring and reporting.** The PMO, PIU (Muktagacha *pourashava*), and Management Design and Supervision Consultants (MDSC) will be responsible for safeguard monitoring. The MDSC will submit monthly monitoring reports to PMO, and the PMO will send semi-annual monitoring reports to ADB. ADB will post the semi-annual environmental monitoring reports on its website as part of its disclosure requirements.

17. **Conclusions and recommendations.** The citizens of Muktagacha will be the major beneficiaries of this subproject. The proposed subproject is unlikely to cause significant adverse impacts and net environmental benefits to citizens of Muktagacha will be positive. The potential impacts that are associated with design, construction and operation can be mitigated to standard levels without difficulty through proper engineering design and the incorporation or application of recommended mitigation measures and procedures.

18. Based on the findings of the IEE, there are no significant impacts and the classification of the subproject as Category “B” is confirmed. No further special study or detailed environmental impact assessment (EIA) needs to be undertaken to comply with ADB SPS, 2009.

I. INTRODUCTION

1. After the successful implementation of Urban Governance and Infrastructure Improvement Projects (UGIIP I and II)³ in the selected *pourashavas*, Local Government Engineering Department (LGED) with the financial assistance of Asian Development Bank (ADB) have planned to implement a similar project (UGIIP-3) in selected thirty *pourashavas* over a period of 6 years (2014 to 2020).
2. The impact will be improved living environment in project towns. The outcome will be improved municipal service delivery and urban governance in project towns. Project towns are pre-selected 30 towns to be supported in an integrated manner under the project. UGIIP-3 will improve existing and provide new municipal infrastructures including (i) roads; (ii) drainages; (iii) water supply system; (iv) solid waste management facilities; (v) slaughterhouses; (vi) markets, community center/auditorium, bus and truck terminals and river *ghats*; (vii) public toilets; and (viii) others such as provision for street lighting and improvement of slums.
3. A sector-lending approach will be used for the ensuing loan project as it has been well established and successfully practiced in the UGIIP I and II.
4. LGED is the executing agency of the project while DPHE (Department of Public Health Engineering) will provide advisory support in relation to the implementation of water supply schemes/subprojects in a *pourashavas*.
5. Muktagacha drainage subproject is one of the subprojects proposed under UGIIP-3. ADB requires the consideration of environmental issues in all aspects of the Bank's operations, and the requirements for environmental assessment are described in ADB's Safeguard Policy Statement (SPS, 2009).
6. **Categorization.** An environmental assessment using ADB's Rapid Environmental Assessment (REA) checklist for drainage and flood control (**Appendix 9**) was conducted and results of the assessment show that the subproject is unlikely to cause significant adverse impacts. Muktagacha drainage subproject is classified as environmental category B as per ADB SPS. This initial environmental examination (IEE) has been prepared in accordance with ADB SPS's requirements for environment category B projects and provides mitigation and monitoring measures to ensure no significant impacts as a result of the subproject.

³ The Government of Bangladesh with the assistance of ADB has introduced a system whereby funds/loans for development are disbursed in a phased manner based on the successful accomplishment by the recipient *pourashavas* of a set of performance-criteria in the area of urban governance. UGIIP I and II reflect this approach which aims to incentivize participating *pourashavas* to become well-managed and maintained towns in a sustainable way through systems of governance ensuring citizen's participation and inclusion of women, poor and the minority groups in *pourashava* activities. UGIIP I targeted for 33 and UGIIP II for 35 *pourashavas*. The subprojects were (i) water supply (ii) sanitation, (iii) solid waste management, (iv) urban drainage, (v) urban transport & communication and (vi) public use facilities.

II. POLICY, LEGAL, AND ADMINISTRATIVE FRAMEWORK

A. ADB Policy

7. ADB requires the consideration of environmental issues in all aspects of ADB's operations, and the requirements for environmental assessment are described in ADB SPS, 2009. This states that ADB requires environmental assessment of all ADB investments.

8. **Screening and categorization.** The nature of the environmental assessment required for a project depends on the significance of its environmental impacts, which are related to the type and location of the project; the sensitivity, scale, nature, and magnitude of its potential impacts; and the availability of cost-effective mitigation measures. Projects are screened for their expected environmental impacts, and are assigned to one of the following four categories:

- (i) **Category A.** Projects could have significant adverse environmental impacts. An EIA is required to address significant impacts.
- (ii) **Category B.** Projects could have some adverse environmental impacts, but of lesser degree or significance than those in category A. An IEE is required to determine whether significant environmental impacts warranting an EIA are likely. If an EIA is not needed, the IEE is regarded as the final environmental assessment report.
- (iii) **Category C.** Projects are unlikely to have adverse environmental impacts. No EIA or IEE is required, although environmental implications are reviewed.
- (iv) **Category FI.** Projects involve a credit line through a financial intermediary or an equity investment in a financial intermediary. The financial intermediary must apply an environmental management system, unless all projects will result in insignificant impacts.

9. This draft IEE for the Muktagacha drainage subproject is based on the feasibility study and preliminary engineering designs prepared during project preparation. This IEE will be finalized during detailed design stage to reflect any changes and latest subproject designs.

10. **Environmental management plan.** An EMP, which addresses the potential impacts and risks identified by the environmental assessment, shall be prepared. The level of detail and complexity of the EMP and the priority of the identified measures and actions will be commensurate with the project's impact and risks.

11. **Public disclosure.** ADB will post the below safeguard documents on its website as well as disclose relevant information in accessible manner in local communities:

- (i) for environmental category A projects, draft EIA report at least 120 days before Board consideration;
- (ii) final or updated EIA and/or IEE upon receipt; and
- (iii) environmental monitoring reports submitted by the Project Management Office (PMO) during project implementation upon receipt.

B. National Laws

12. Implementation of all subprojects will be governed by the environmental acts, rules, policies, and regulations of the Government of Bangladesh. These regulations impose restrictions on the activities to minimize/mitigate likely impacts on the environment. Many of these are cross-sectoral and several of them are directly related to environmental issues. The most important of these are the Environment Conservation Act, 1995 (ECA, 1995), and the Environment Conservation Rules (ECR, 1997).

13. Table 17 presents specific requirements for the Muktagacha drainage subproject. **Appendix 10** provides the environmental standards for air, surface water, groundwater, drinking water, emissions, noise and vehicular exhaust.

Table 1: Applicable Government of Bangladesh Environmental Legislations

	Legislation	Requirements for the Project	Relevance
1.	Environmental Conservation Act of 1995 and amendments in 2000, 2002 and 2010 ⁴	<ul style="list-style-type: none"> • Restriction on operation and process, which can be continued or cannot be initiated in the ecologically critical areas • Regulation on vehicles emitting smoke harmful to the environment • Remedial measures for injuries to ecosystems • Standards for quality of air, water, noise and soil for different areas for various purposes and limits for discharging and emitting waste • Environmental guidelines 	The provisions of the act apply to the entire subproject in the construction and operation and maintenance (O&M) phases.
2.	Environmental Conservation Rules of 1997 and amendments in 2002 and 2003	<ul style="list-style-type: none"> • Environmental clearances • Compliance to environmental quality standards 	The subproject is categorized as Orange-B and requires locational clearance certificate (LCC) and environmental clearance certificate (ECC). All requisite clearances from DoE shall be obtained prior to commencement of civil works.
3.	Forest Act of 1927 and amendments (2000)	<ul style="list-style-type: none"> • Clearance for any felling, extraction, and transport of forest produce 	Considered in subproject preparation and implementation.
4.	Bangladesh Climate	<ul style="list-style-type: none"> • Ensure existing assets is put 	Considered in subproject

⁴ *ECA Amendment 2000* focuses on ascertaining responsibility for compensation in cases of damage to ecosystems, increased provision of punitive measures both for fines and imprisonment and the authority to take cognizance of offences. *ECA Amendment 2002* elaborates restrictions on polluting automobiles; restrictions on the sale, production of environmentally harmful items like polythene bags; assistance from law enforcement agencies for environmental actions; break up of punitive measures; and authority to try environmental cases. In *ECA Amendment 2010*, no individual or institution (government or semi-government/non-government/self-governing can cut any hill or hillock; fill-up or changed any remarked water body however in case of national interest; the mentioned activities can be done after getting clearance from respective the departments.

	Legislation	Requirements for the Project	Relevance
	Change Strategy and Action Plan of 2009	in place to deal with the likely impacts of climate change. <ul style="list-style-type: none"> Enhance the capacity government ministries, civil society and private sector to meet the challenge of climate change 	preparation and implementation.
5.	Bangladesh Labor Law of 2006	<ul style="list-style-type: none"> Compliance to the provisions on employment standards, occupational safety and health, welfare and social protection, labor relations and social dialogue, and enforcement Prohibition of employment of children and adolescent 	Considered in the EMP.

C. Government of Bangladesh Environmental Assessment Procedures

14. Under ECA, 1995 and ECR, 1997 industrial units and projects are classified into four categories according to “their site and impact on the environment” and investment size, and each category (Green, Orange-A, Orange-B and Red) requires a different level of environmental assessment as a prerequisite for the Department of Environment (DoE) in granting the locational clearance certificate (LCC) and environmental clearance certificate (ECC) that allow the project to proceed.

15. As per Schedule 1 of ECA, 1995 Muktagacha drainage subproject is likely to be classified as red category (Table 18). Thus LCC and ECC is required from the DoE prior to commencement of the subproject.

Table 2: Likely Government of Bangladesh Classification of Muktagacha Drainage Subproject

	Subproject	Component	Equivalent in Schedule I of ECR 1997	DoE Classification
1.	Drainage and flood control	Primary network (includes domestic connections or primary drains)	Engineering works (up to 10 hundred thousand Taka capital)	Red As per preliminary quantity and cost estimate, Muktagacha drainage and flood control structures 59.17 million Taka
		Secondary network (includes secondary drains)		
		Tertiary network (includes main drains and drainage outfalls)		

16. Rule 7 of the ECR, 1997 indicates that the application for ECC must be made to the relevant DoE Divisional Officer, and the application for red category projects will include the following:

- (i) completed application for ECC, and the appropriate fee;
- (ii) report on the feasibility of the project;

- (iii) report on the IEE for the project, and terms of reference (TOR) for the EIA; or EIA report prepared on the basis of TOR previously approved by DoE;
- (iv) report on the environmental management plan (EMP);
- (v) no objection certificate from the local authority;
- (vi) emergency plan relating to adverse environmental impact and plan for mitigation of the effect of pollution; and
- (vii) Outline of the relocation and rehabilitation plan (where applicable).

17. DoE has 60 days to respond to receipt of the ECC application for a red category project.

18. This draft IEE will serve the basis for the ECC application and will be supplemented to fulfill any additional government requirements.

III. DESCRIPTION OF THE PROJECT

A. The Study Area

19. Muktagachha is a Pourashava of Mymensingh in Dhaka division in the north of Bangladesh and lies between 24°44' and 24°47' north latitudes and between 90°14' and 90°17' east longitudes. The area of the Muktagachha Pourashava is 11.97 sq.km and its total population as of 2011 is 49,915.

20. Subproject components are located in Muktagacha urban area or in its immediate surroundings which were converted into urban use for many years ago, and there is no natural habitat left at these sites. The subproject sites are located in existing right of way (ROWs) and government-owned land. There are no protected areas, wetlands, mangroves, or estuaries in or near the subproject location. There are no forest areas within or near Muktagacha. The location map is shown as Figure 1.

B. Existing Condition and Need for the Project

21. The development of the drainage system of Muktagachha Pourashava has taken place in a haphazard way and shows a very grave situation. The main and secondary drains and natural streams in the Pourashava do not function as an integrated drainage system. Encroachment on drainage systems causes inundation to many areas, including houses and roads, during heavy storms. There are few roadside drains only in the central part of the town. Those drains are inadequate and incapable of draining out the storm runoff generated in the catchment area due to insufficient capacities, incorrect gradients and improper outfall. Most of the existing drains, as identified from field visit, remain inoperative due to blockage from disposal of solid waste into the drains. Two canals namely- Dholai khal and the Aimon river are located within the Pourashava and two beels namely Dolua beel and Hari bhanga beel exist in the fringe area of the Pourashava to act as outfalls of the existing drains.

22. Most of the drains of Muktagachha Pourashava have been constructed in an unplanned way without considering proper outfalls as piece meal, no proper size and gradient has been maintained. Most of them need reconstruction and form a network up to a proper outfall. Some drains shall have to be extended further downstream and to be linked them with the network or up to the natural outfalls.

23. The Imon river which is flowing along the northern and eastern periphery from north to south receive most of the drainage runoff by the existing drain and by gravity overland flow. It is found that The Aimon river has a good section just outside the Pourashava boundary. But after entering the Pourashava the river is irregular in shape and size and remains dried for most part of the year. The Dholai khal which is a tributary of the Imon river is facing serious encroachments by residences and construction of road across the khal and facing almost losing its existence. The Imon river and the Dholai khal need to be rehabilitated with proper section and gradient so that they can function properly as primary drains that are sufficient to carry the total runoff of the Pourashava. For man-made primary drains, secondary and tertiary drains these khals shall be their outfalls. Besides, there are a number of Beels and Swampy areas, which can be utilized as water retention ponds for retaining the storm runoff generated from rainfall and hence reducing the vulnerability to internal flood.

24. Most of the drains of Muktagachha Pourashava have been constructed in an unplanned way without considering proper outfalls as piece meal, no proper size and gradient has been maintained. Most of them need reconstruction and form a network up to a proper outfall. Some drains shall have to be extended further downstream and to be linked them with the network or up to the natural outfalls.

25. The Imon river which is flowing along the northern and eastern periphery from north to south receive most of the drainage runoff by the existing drain and by gravity overland flow. It is found that The Aimon river has a good section just outside the Pourashava boundary. But after entering the Pourashava the river is irregular in shape and size and remains dried for most part of the year. The Dholai khal which is a tributary of the Imon river is facing serious encroachments by residences and construction of road across the khal and facing almost losing its existence. The Imon river and the Dholai khal need to be rehabilitated with proper section and gradient so that they can function properly as primary drains that are sufficient to carry the total runoff of the Pourashava. For man-made primary drains, secondary and tertiary drains these khals shall be their outfalls. Besides, there are a number of Beels and Swampy areas, which can be utilized as water retention ponds for retaining the storm runoff generated from rainfall and hence reducing the vulnerability to internal flood.

C. Proposed Components

26. The drainage alignments ere visited and examined extensively by the PPTA team. The rainfall, flooding information were collected including history of stagnation, over-flow causing inundation of adjoining areas. The existing conditions were assessed and used as basis for widening or deepening requirements, re-sectioning needs, longitudinal gradients and location of outfall. The list of proposed drainage network (Table 19) was discussed with Muktagacha pourashava Town Level Committee Council (TLCC) and municipal council, with a view to prepare preliminary designs and cost estimates.

27. Figures 10 to 12 show the typical sections of different types of roads that may be used in the subproject.

Table 3: Proposed Drainage Improvements in Muktagacha

ID	Name of proposed Drain schemes	Length of Drain (m)
1	Construction of RCC Drain Laxmikhola graveyard road	828
2	Construction of RCC Drain Surjakanta Road	1105
3	Construction of RCC Drain Shashikanta road	1455
4	Construction of RCC Drain Jogendra Narayan road	1430
5	Construction of RCC Drain Nobindas road & Part Sreenath babu road	1148
6	Construction of RCC Drain Kasem ali College road	800
7	Construction of RCC Drain Durga prasad ball road	1x1865.00
8	Construction of RCC Drain Bubon sen devi prasad road	1x900.00
9	Construction of RCC Drain house of Mr. Karim master to lmon river at Laxmikhola	1x150.00
10	Construction of RCC Drain Sreenath babu road to house of Mr. Nayan	2x180.00
11	Construction of RCC Drain of Jadob Babu road	2x160.00
12	Construction of RCC Drain Horeshwar shayanal road	1x580.00, 1x380.00
13	Construction of RCC Drain Jogat Kishore road	2x610.00
20	Construction of RCC Drain Koundangarcara road	572
	Total	13113

28. This IEE covers construction of 4 drains with total length of 4.818 km (Table 20) to be rehabilitated under Phase 1 (see implementation schedule). This IEE will be updated with the final road designs to be prepared during the detailed design phase.⁵

Table 4: Proposed Drains under Phase 1 Implementation - Muktagacha

ID	Name of proposed Drain schemes	Length of Drain (km)	Present nature & condition of Drain
1	Construction of RCC Drain Laxmikhola graveyard road	0.828	Earthen
2	Construction of RCC Drain Surjakanta Road	1.105	Brick Masonry & Bad
3	Construction of RCC Drain Shashikanta road	1.455	Brick Masonry & Bad
4	Construction of RCC Drain Jogendra Narayan road	1.430	Brick Masonry & Bad
	Total	4.818	

D. Implementation Schedule

29. Implementation of UGIIP-3 is split up into 3 phases: (i) 1st phase = 18 months or 1.5 years; (ii) 2nd phase = 30 months or 2.5 years; and (iii) 3rd phase = 24 months or 2 years

30. Construction of 4 drains (total 4.818 km) will be implemented under Phase 1, while the remaining 10 drains will be implemented in the succeeding phases. Preliminary design of Phase 1 roads has been done by the PPTA and will be finalized during detailed design stage. It is estimated that construction period for Phase 1 implementation will cover 18 months.

⁵ A new IEE will need to be prepared for each phase, which would require a simple updating of this IEE, as follows: Muktagacha Drainage (Phase II) IEE and Muktagacha Drainage (Phase III) IEE.

31. The final detailed implementation schedule will be provided in the updated IEE once the detailed design phase is completed.

Figure 2: Proposed Drainage Works in Muktagacha Pourashava

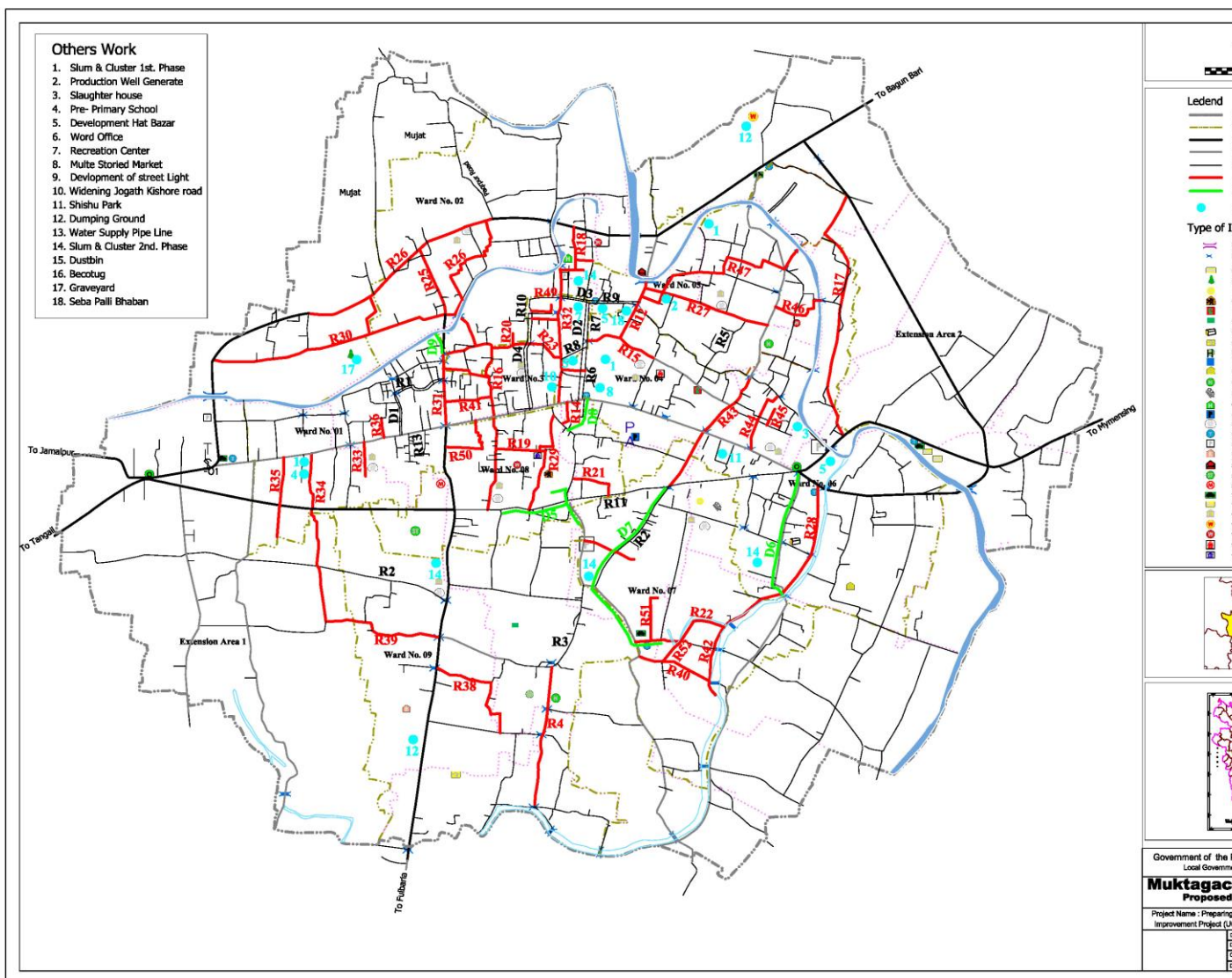


Figure 3: Typical Reinforced Cement Concrete Box Culvert Drain

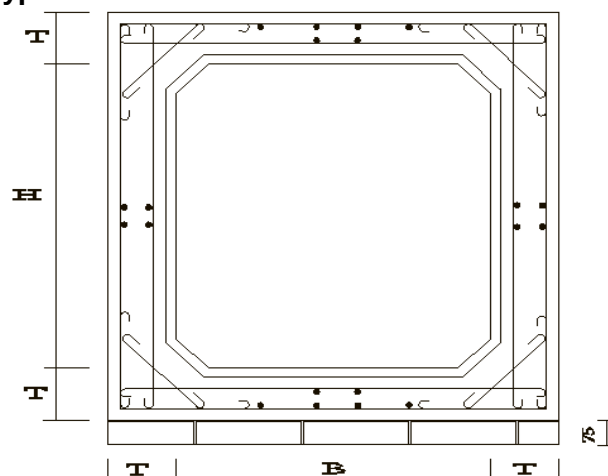
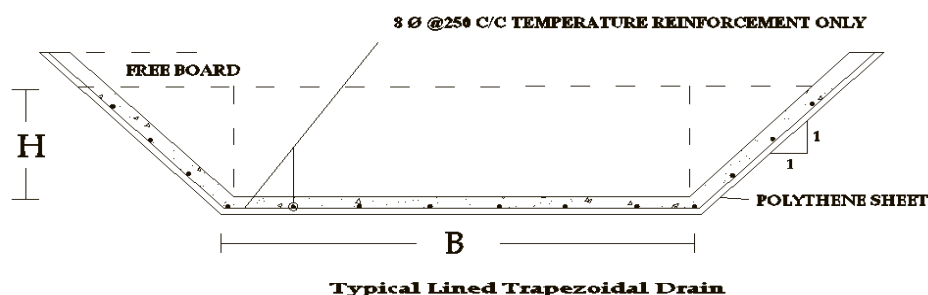


Figure 4: Typical RCC Trapezoidal Line Drain



IV. DESCRIPTION OF THE ENVIRONMENT

A. Methodology Used for the Baseline Study

32. **Data collection and stakeholder consultations.** Data for this study has been primarily collected through comprehensive literature survey, discussion with stakeholder agencies, and field visits to the proposed subproject sites. The literature survey broadly covered the following:

- (i) subproject details, reports, maps, and other documents available with the ADB and PPTA consultants, LGED, and Muktagacha *pourashava*;
- (ii) relevant acts and extraordinary gazettes, and guidelines issued by Government of Bangladesh agencies; and
- (iv) literature on land use, soil, geology, hydrology, climate, socioeconomic profiles, and environmental planning documents collected from Government of Bangladesh agencies and websites.

33. Several visits to the subproject sites were made during the PPTA stages to assess the existing environment (physical, biological, and socioeconomic) and gather information with regard to the proposed sites and scale of the proposed subproject. A separate socioeconomic study was conducted to determine the demographic information, archeological and religious places, densely populated pockets, and settlements.

34. **Data analysis and interpretation.** The data collected was analyzed and interpretations made to assess the physical, biological, and socioeconomic features of the project area. The relevant information is presented in the succeeding paragraphs.

35. **Updating during detailed design phase.** The IEE including specific description of the environment and corridor of impact will be updated as necessary based on the final roads design and alignments.

B. Physical Characteristics

36. **Topography.** The topography of the Pourashava is almost plain. The central areas of ward nos.1,4,8 &6 through which the Mymensingh-Madhupur-Tangail highway passes over the Pourashava in east-west direction is high, form the core area and free from annual flood. The areas in wards 2 & 5 in the north and of wards 7&9 in the south form the fringe area, is semi urban in nature which are comparably low and produce shallow flooding. The Imon river which is flowing along the northern and eastern periphery from north to south receive most of the drainage runoff by the existing drain and by gravity overland flow. Another canal named the Dholai khal, flowing through ward no.7 a tributary of Imon river also contribute in drainage. But the khal now is going to lose its existence gradually due to encroachments by residential occupations and unplanned construction of roads.

37. Muktagacha Pourashava has a mixed topography. Most urbanized areas are located within a high altitude. Two main waterbodies (Dholai Khal and the Aimon River) are located within the PS as well as beels (Dolua and Hari Bhanga) in the PS fringe areas acting as outfalls of the drains.

38. **Climatic conditions.** The climate of the *pourashava* area is moderate with the maximum and minimum mean monthly temperature being 32.3°C and 24.7°C, respectively observed in April and January. Mean annual rainfall is 2253 mm, with most of it occurring during five months of monsoon, between May to September, which is around 82% of the aggregate precipitation. In the winter months of December-January, at times, temperature comes down substantially that at times adds to the woe of the dwellers.

39. **Surface water and other bodies of water.** There are large number of ponds, ditches, low lying agricultural lands as low pockets in Muktagachha which act as retention basin to delay the maximum floods in the monsoon. However the PPTA study identified there are no existing natural or man-made bodies of water adjacent or within the corridors of impact of the subproject. Any water bodies to be identified during detailed design phase will be assessed and reported in the updated IEE.

40. **Air quality.** As there are no major industries in Muktagachha the main sources of air pollution are vehicles and non-point sources such as open burning. There are currently no air quality monitoring stations are in operation within the *pourashava* limit. The baseline air quality will be measured by the subproject contractors prior to commencement of work. The results will be provided in the updated IEE and all other measurements during implementation will be reported as part of EMP implementation.

41. **Acoustic environment.** Subproject components are in the built-up part of Muktagachha, with residential, commercial, and institutional establishments. The volume of traffic that passes through these sections is not significant and traffic jams are not frequent. However vehicular

movement can be considered as major cause of noise pollution. The baseline noise level will be measured by the subproject contractors prior to commencement of work. The results will be provided in the updated IEE and all other measurements during implementation will be reported as part of EMP implementation.

42. **Water logged areas.** Most of the drains of Muktagachha Pourashava have been constructed in an unplanned way without considering proper outfalls as piece meal, no proper size and gradient has been maintained. Most of them need reconstruction and form a network up to a proper outfall. Some drains shall have to be extended further downstream and to be linked them with the network or up to the natural outfalls.

43. Muktagachha is intermittently affected by annual floods from adjoining rivers/khals. Spillage of Aimon river and its branches carry noticeable quantity of silt causing decrease in drainage capacity which causes flooding of adjoining areas.

C. Biological Characteristics

44. **Flora and fauna.** Subproject components are located in Muktagachha urban area or in its immediate surroundings which were converted into urban use for years ago, and there is no natural habitat left at these sites. Animals and plants in the subproject area are those commonly found in urban and built-up areas. No endangered/protected species of either flora or fauna are found in the *pourashava* or its immediate surroundings.

45. **Protected areas.** There are no protected forests, wetlands, mangroves, or estuaries in or near the subproject area.

D. Socioeconomic Characteristics

46. **Area and population.** The *pourashava* with an area of 11.97km² lies within the center of Muktagachha *upazilla*. Information about the total number of households, with average size, and population of Muktagachha *pourashava* is presented in Table 21.

Table 5: Population of Muktagachha Pourashava

Administrative Unit	Area (sq. km)	Households (nos.)	Total Population	Average Household Size	Density (per sq.km)
Muktagachha Pourashava	11.97	11,189	49,915	4.4	4,170
Ward No - 01	1.72	1913	8140	4.2	4,733
Ward No - 02	0.96	1434	6444	4.4	6,713
Ward No - 03	0.40	688	3136	4.5	7,840
Ward No - 04	0.81	959	4319	4.5	5,332
Ward No - 05	1.15	1422	6203	4.4	5,394
Ward No - 06	3.68	1537	6902	4.4	1,876
Ward No - 07	1.69	1180	5249	4.4	3,106
Ward No - 08	0.81	1207	5590	4.5	6,901
Ward No - 09	0.75	849	3932	4.6	5,243

(Source: BBS Community Report, Zilla: Mymensingh, 2011)

47. **Land use.** Muktagachha urban core areas and the peripheral and fringe areas are in continuous process of changes. As such, the land use character of the Pourashava area is expected to be of non-rural in nature and found to comprise activities commensurate with urban living. The spatial structure and land use pattern of the pourashava have been mostly the result

of natural growth. Here although a development took place during the last decade yet the Pourashava area is still predominantly agricultural in character which comprises 54.14% of the total area. The next major category of land use is residential which is 27.71%. Urban growth is found in mainly south and south-east part of the Pourashava along the Mymensingh-Tangail highway. Residential rural settlements are also found along the major roads and in almost scattered manner in the peripheral area.

48. **Literacy.** Muktagachha Sadar has an average literacy rate of 60.2% (7+ years), and the national average of 32.4% literate. (BBS, 2011).

49. **Water supply and water quality.** The *pourashava*'s water supply system comprises of 3 production tube wells, 398 privately owned tube wells, 737 water connections, 20 km of transmission and distribution mains. The system operates 6 to 8 hours a day. The supplied water is free of iron and arsenic and hence does not require any treatment. The current demand is 80 liters capita per day and only 60% of the population is served.

50. **Roads, existing provisions for pedestrians, and transport-related facilities.** Muktagachha roads (total of 84.93 km) generally fall into two categories: *kutcha* (earthen) construction and *pukka* (formed) roads. Formed roads are mainly BT asphalt roads with CC roads in a few places for main roads, while minor roads may also be brick-on-edge soling, known locally as HBB. Nearly all roads are built above the existing ground level, not only to avoid inundation during storms, but as the silty loam and alluvial soils typical of the area compact easily, roads need a supporting base layer that is often built up to around one meter above ground level. There are no provisions for pedestrians (e.g. footpaths) along the roads. There are no public or private bus services available. There is no designated authority for the management of traffic.

51. There is no bus/truck terminal provided with loading-unloading facilities and passengers waiting areas. All the buses stop on the roadside generating congestion and inconvenience to both the commuters and pedestrians. There is no designated place for parking vehicles in the PS. Besides, there are no footpaths along the PS roads. Traffic management system of the PS is unorganized, blockdated and poor. There is no traffic police or computerized signal system to manage/control the traffic.

52. **Drainage.** At present, the drainage system of Muktagachha includes 19.577 km of *pucca* drains. In addition, there are 39.450 km of *katcha* drains *katchakhal*. PPTA study shows that there is 1.63 km of *pucca* drain per sq km of the pourashava area which indicates a somewhat poor spectacle of the drainage system in Muktagachha. Urban dwellers in most areas reported that the present drainage system is inadequate is inadequate.

53. **Sanitation.** The existing sanitary condition in Muktagachha is relatively poor. As per Bangladesh Bureau of Statistics data for 2011, 17.0% of the pourashava population have water sealed latrines, 39.4% have latrines that are not water-sealed, 40.5% of the population have non-sanitary facilities while the remaining 3.1% have no toilets. Muktagachha has no sewerage system and disposal/treatment facilities.

54. There are 10 nos. public toilets in Muktagachha but these are in worse conditions as the pits, septic tanks and superstructures are mostly damaged. There is no arrangement for electricity and water supply. There is no separate provisions for women.

55. Sanitation facilities in schools (primary and secondary) are found not in bad conditions. There is no huge demand of toilets in schools contrary to the findings of the PPTA study which identified school toilets to be constructed in schools visited.

56. **Solid waste management.** Solid waste management in Muktagachha consists of collection, transportation and dumping of wastes. There are 17 fixed dustbins located in different parts of the *pourashava*. There are 2 old open trucks working for Solid Waste Management. There are 18 street sweepers, 23 drain cleaners, 12 truck cleaners and 2 truck drivers working for waste management. The *pourashava* currently does not have its own solid waste disposal site. Wastes are dumped in vacant low lands, commonly requested by private land owners to reclaim/increase the level of the land.

57. Muktagachha generates about 15 metric tons per day computed based on 0.3 kilograms (kg) per capita per day. Segregation at source is not practiced resulting to mixed wastes from households, commercial establishments, hospitals, institutions and others. There is no regular public awareness and public relation activities in the *pourashava*. Community involvement is absent. Informal sector is prominent in recyclable collection and recycling.

58. **Other existing amenities for community welfare.** The *pourashava* has 3 kitchen markets. PPTA study estimated 3,000 people use to meet their daily needs. The kitchen markets lack in adequate number of waste bins and do not have arrangement for waste collection. Generally, there is no arrangement for drainage within the markets. The PPTA team noted Muktagachha has one well-designed and built kitchen market with 10 sheds along with a slaughterhouse however the *pourashava* sparsely use the facility. The *pourashava* could not provide plausible answer to their not being used.

59. There are 1 graveyard, 1 burning crematorium, 1 government hospital, 6 government primary schools, 5 high schools, 2 Colleges, and 1 polytechnic Institute. Apart from these, there are madrasas (community based religious institutes) established with private initiatives and operated and managed privately.

E. Historical, Cultural and Archaeological Characteristics

60. Muktagachha Pourashava is an old Pourashava and established on 1st July 1878 by gazette notification with an area of 9.71sq.km. Later on in 15th July 1990 the Government further extended the area of Pourashava to an area of 11.97 sq km. The Muktagachha Pourashava authority proposed to include neighboring areas of 6 mouzas (partly) with the Pourashava.

61. **Archaeological Heritage and Relics:** Rajbaris of Gauripur and Muktagachha, Shashi Lodge, Musium, Durgabari, Kella Tajpur, Mymensingh Town Hall, Bokaynagar Fort, Alexandra Castle and Gospel Church.

62. **Historical Events:** During the War of Liberation the Muktagachha Pourashava was under Sector 11. Muktagachha was liberated on 10 December 1971. Fakir and Sannyasi revolt (1772-1790, flood (1787), famine (1788), earth quack (1897) and Swadeshi Movement (1905). Mymensingh possesses rich literary heritage recognized through the world. The mainmansingha gitika (ballads) collected and edited by Dr. Dinesh Chandra Sen represents a valuable treasure in the world literature and has been translated into English and French.

63. **Marks of War of Liberation:** Mass grave 7, memorial 2, mass killing site 7.

64. It has been noted during the PPTA study road alignments and corridors of impact are not within nor adjacent to these sites.

V. ANTICIPATED ENVIRONMENTAL IMPACTS AND MITIGATION MEASURES

A. Methodology

65. Issues for consideration have been raised by the following means: (i) input from interested and affected parties; (ii) desktop research of information relevant to the proposed subproject; (iii) site visits; and (iv) evaluation of proposed design scope as per PPTA study and potential impacts.

66. **The** corridors of impact considered include: (i) existing alignment and width of drains to be constructed; and (ii) existing ROWs. No additional land is required beyond the ROWs. Categorization of the subproject and formulation of mitigation measures have been guided by ADB's REA Checklist for Roads (Appendix 1) and ADB SPS, 2009.

B. Screening out Areas of No Significant Impact

67. From the preliminary design and results of the rapid environmental assessment, it is clear that implementation of Muktagacha drainage subproject will not have major negative impacts because activities will be localized/site-specific and short in duration. Moreover, the corridors of impact of the subproject will be on existing public ROWs, and construction will be conducted within a relatively small area. Because of these there are several aspects of the environment that are not expected to be affected by the subproject (Table 22) and thus can be screened out of the assessment at this stage but will be assessed again during detailed design stage and before implementation.

Table 6: Fields in Which the Subproject Is Not expected to have Significant Impacts

Field	Rationale
A. Physical Characteristics	
Topography, landforms, geology and soils	Required amount of materials will not cause alteration of topography, landforms, geology and soils. Erosion hazard is insignificant as trenching and excavation works will be conducted only during construction stage (short-term) and specific to sites along public ROWs.
Climatic conditions	Short-term production of dust is the only effect on atmosphere. However, impact is short-term, site-specific and within a relatively small area. There are well developed methods for mitigation.
B. Biological Characteristics	
Biodiversity	Activities being located in the built-up area of Muktagacha <i>pourashava</i> will not cause direct impact on biodiversity values as identified flora and fauna are those commonly found in built up areas. The construction activities do not anticipate any cutting of trees.
C. Socioeconomic Characteristics	
Land use	No alteration on land use.
Type of community spread	No alteration on type of community spread.
Socio-economic status	There is no requirement for land acquisition. Affected persons and structures will be addressed separately in the resettlement plan developed as per Government of Bangladesh laws and ADB SPS, 2009. Manpower will be required during the construction stage, this can result to generation

Field	Rationale
	of contractual employment and increase in local revenue.
D. Historical, Cultural, and Archaeological Characteristics	
Physical and cultural heritage	The subproject components are not located in or near and excavation works will not be conducted in the vicinities of identified historical sites.

C. Anticipated Impacts and Mitigation Measures – Planning and Design Phase

68. **Subproject selection criteria.** The project environmental assessment and review framework specifies environmental criteria to avoid or minimize adverse impacts during the identification and finalization of drainage subprojects. Table 23 summarizes site and design considerations as per preliminary design.

Table 7: Site and Design Considerations to Meet EARF Environmental Criteria

Component s	Environmental Selection Guidelines	Remarks
1. Overall selection guideline	i. Comply with all requirements of relevant national and local laws, rules, and guidelines.	- Requisite LCC and ECC to be obtained prior to commencement of works
	ii. Avoid/minimize where possible locations in protected areas, including notified reserved forests or biodiversity conservation hotspots (wetlands, national reserves, forest reserves, and sanctuaries).	- Not present in Muktagacha <i>pourashava</i>
	iii. Avoid possible locations that will result in destruction/disturbance to historical and cultural places/values.	- Use of “chance find” procedures in the EMP that include a pre-approved management and conservation approach for materials that may be discovered during project implementation.
	iv. Avoid tree-cutting where possible. Retain mature roadside trees which are important/valuable or historically significant. If any trees have to be removed, plant two new trees for every one that is lost.	- Permit for tree-cutting to be obtained by contractor/s prior to commencement of work - Compensatory plantation for trees lost at a rate of 2 trees for every tree cut, in addition to tree plantation as specified in the design, will be implemented by the contractor, who will also maintain the saplings for the duration of his contract.
	v. Ensure all planning and design interventions and decisions are made in consultation with local communities and include women. Reflect inputs from public consultation and disclosure for site selection.	- All consultations during project preparation are documented and concerns expressed by public addressed in the IEE.
	vi. Synchronize all road improvement and pipe laying works (to extent possible) to minimize disturbance and optimize use of resources (e.g., water pipes laid prior to road improvements).	-Not relevant
2. Drainage	i. Outfalls should be to suitable	- Outfalls identified in the preliminary

	Component s	Environmental Selection Guidelines	Remarks
	improvement	drainage areas (<i>nallas</i> , canals, etc.) and avoid flooding to adjacent private lands.	design (Choto Jamuna, Tulshiganga, existing drainage canals)
		ii. Include measures to ensure the safe disposal of canal dredge (e.g., to dumpsite or landfill) without causing an environmental hazard.	- Addressed in the EMP.

69. **Land acquisition and resettlement.** The proposed drainages will be located in public ROWs. Involuntary resettlement impacts on encroachers along ROWs will be addressed by the resettlement plan prepared for the subproject as per ADB SPS, 2009 and applicable Bangladesh laws. Cutting of trees will not be required as per preliminary design. This will be reassessed during detailed design stage and if cutting of trees will be required, compensatory plantation for trees lost at a rate of 2 trees for every tree cut will be implemented by the contractor, who will also maintain the saplings for the duration of his contract.

70. Planning principles and design considerations have been reviewed and incorporated into the site planning process whenever possible. Locations and sitting of the proposed infrastructures were considered to further reduce impacts. The subproject will be in properties held by the *pourashava* and access to the subproject sites is through public ROW and existing roads hence, land acquisition and encroachment on private property will not occur.

71. The concepts considered in design of the Muktagacha drainage subproject are: (i) locating components on government-owned land to avoid the need for land acquisition and relocation of people; (ii) using vacant right of way (ROW), and taking all possible measures in design and selection of site or alignment to avoid resettlement impacts; (iii) avoiding where possible locations that will result in destruction/disturbance to historical and cultural places/values; (iv) avoiding tree-cutting where possible; (v) ensuring all planning and design interventions and decisions are made in consultation with local communities and reflecting inputs from public consultation and disclosure for site selection.

72. Preliminary designs integrate a number of measures, both structural and non-structural, to mainstream climate resilience into the Muktagacha drainage subproject, including: (i) proper compaction; (ii) prefer RCC lining where there are threats of inundation; and (iii) provision of cross-drains as required.. As a result, some measures have already been included in the subproject designs (Table 24). This means that the impacts and their significance have already been reduced.

Table 8: Possible Actions to Mitigate against Projected Effects of Climate Change and Improve Climate Resilience on Drainage Infrastructure

	Climate Change Effect	Mitigation Measures
1.	Increased rainfall quantity and runoff	<ul style="list-style-type: none"> • Increase infrastructure capacity, e.g. channels, bridges, culverts, regulating structures, outfall vents, etc. (levels to take account of sea level rise) • Create capacity to detain runoff as necessary, e.g. ponds, open spaces, channels, <i>khas</i>, etc. • Isolate/protect vulnerable catchments and sub-catchments, to reduce flooding from adjacent catchments, especially if large in area and volume and impacts are less serious, e.g. agricultural land

	Climate Change Effect	Mitigation Measures
		<ul style="list-style-type: none"> • Actively managing runoff and discharges, according to needs, adverse impacts, etc. • Improve O&M, organizational capacity, resource allocation, etc. • Work with relevant stakeholders to manage water use and flood discharges more effectively • Improve collection and disposal of solid waste • Control encroachments • Improve public behavior through active and prolonged information, education and communication campaigns to reduce uncontrolled solid waste disposal, encroachments, damage to infrastructure, unregulated development in key areas, etc., supported by enforcement.

Source: PPTA Consultants

D. Anticipated Impacts and Mitigation Measures – Construction Phase

73. In the case of this subproject (i) most of the individual elements are relatively small and involve straightforward construction, so impacts will be mainly localized and not greatly significant; (ii) most of the predicted impacts are associated with the construction process, and are produced because that process is invasive, involving excavation and earth movements; and (iii) being located in the built-up area of the *pourashava*, will not cause direct impact on biodiversity values.

74. **Construction method.** Trenches will be dug by backhoe digger, supplemented by manual digging where necessary. Excavated soil will be placed nearby, and the materials (brought to site on trucks and stored on unused land nearby) will be placed in the trench by crane or using a small rig. The infrastructures will be constructed manually according to design specifications. Any excavated road will be reinstated. Any dredged materials will be disposed to pre-approved disposal sites.

75. There is sufficient space for a staging area, construction equipment, and stockpiling of materials. However, the contractor will need to remove all construction and demolition wastes on a daily basis.

76. Although construction of these project components involves quite simple techniques of civil work, the invasive nature of excavation and the project sites in built-up areas of Muktagacha where there are a variety of human activities, will result to impacts to the environment and sensitive receptors such as residents, businesses, and the community in general. These anticipated impacts are short-term, site-specific and within a relatively small area. There are no impacts that are significant or complex in nature, or that need an in-depth study to assess the impact. Thus, Muktagacha drainage subproject is unlikely to cause significant adverse impacts. The potential adverse impacts that are associated with construction activities can be mitigated to acceptable levels with the following mitigation measures (Table 25).

Table 9: Anticipated Impacts and Mitigation Measures – Construction Phase

Field	Impacts	Mitigation Measures
A. Physical Characteristics		
Topography, landforms, geology and	Significant amount of gravel, sand, asphalt and cement will be required for this	<ul style="list-style-type: none"> • Utilize readily available sources of materials. If contractor procures materials from existing burrow pits and quarries, ensure these conform to all

Field	Impacts	Mitigation Measures
soils	subproject. Extraction of construction materials may cause localized changes in topography and landforms. The impacts are negative but short-term, site-specific within a relatively small area and reversible by mitigation measures.	<p>relevant regulatory requirements.</p> <ul style="list-style-type: none"> • Borrow areas and quarries (If these are being opened up exclusively for the subproject) must comply with environmental requirements, as applicable. No activity will be allowed until formal agreement is signed between PIU, landowner and contractor.
Water quality	Trenching and excavation, run-off from stockpiled materials, and chemical contamination from fuels and lubricants may result to silt-laden runoff during rainfall which may cause siltation and reduction in the quality of adjacent bodies of water. The impacts are negative but short-term, site-specific within a relatively small area and reversible by mitigation measures.	<ul style="list-style-type: none"> • Prepare and implement a spoil management plan (Appendix 11). • Prioritize re-use of excess spoils and materials in construction activities. If spoils will be disposed, consult with Muktagacha local authority on designated disposal areas. • All earthworks must be conducted during dry season to maximum extent possible to avoid the difficult working conditions that prevail during monsoon season such as problems from runoff. • Location for stockyards for construction materials shall be identified at least 300m away from watercourses. Place storage areas for fuels and lubricants away from any drainage leading to water bodies. • Take all precautions to minimize the wastage of water in the construction activities. • Take all precautions to prevent entering of wastewater into streams, watercourses, or irrigation system. Install temporary silt traps or sedimentation basins along the drainage leading to the water bodies. • Ensure diverting storm water flow during construction shall not lead to inundation and other nuisances in low lying areas. • While working across or close to any water body, the flow of water must not be obstructed. Ensure no construction materials like earth, stone, or appendage are disposed of in a manner that may block the flow of water of any watercourse and cross drainage channels. • Monitor water quality according to the environmental management plan.
Air quality	Conducting works at dry season and moving large quantity of materials may create dusts and increase in concentration of vehicle-related pollutants (such as carbon monoxide, sulfur oxides, particulate matter, nitrous oxides, and hydrocarbons) which will affect people who live and work near the sites. The	<ul style="list-style-type: none"> • Damp down exposed soil and any sand stockpiled on site by spraying with water when necessary during dry weather; • Use tarpaulins to cover soils, sand and other loose material when transported by trucks. • Unpaved surfaces used for haulage of materials within settlements shall be maintained dust-free. • Arrangements to control dust through provision of windscreens, water sprinklers, and dust extraction systems shall be provided at all hot-mix plants, batching plants and crushers (if these

Field	Impacts	Mitigation Measures
	impacts are negative but short-term, site-specific within a relatively small area and reversible by mitigation measures.	<p>establishments are being set up exclusively for the subproject).</p> <ul style="list-style-type: none"> • Monitor air quality.
Acoustic environment	<p>Construction activities will be on settlements, along and near schools, and areas with small-scale businesses. Temporary increase in noise level and vibrations may be caused by excavation equipment, and the transportation of equipment, materials, and people. However, the proposed subproject will follow existing ROW alignment and impact is short-term, site-specific and within a relatively small area. The impacts are negative but short-term, site-specific within a relatively small area and reversible by mitigation measures.</p>	<ul style="list-style-type: none"> • Involve the community in planning the work program so that any particularly noisy or otherwise invasive activities can be scheduled to avoid sensitive times. • Plan activities in consultation with Muktagacha local authority so that activities with the greatest potential to generate noise are conducted during periods of the day which will result in least disturbance. • Use of high noise generating equipment shall be stopped during night time. • Horns should not be used unless it is necessary to warn other road users or animals of the vehicle's approach; • Utilize modern vehicles and machinery with the requisite adaptations to limit noise and exhaust emissions, and ensure that these are maintained to manufacturers' specifications at all times. • All vehicles and equipment used in construction shall be fitted with exhaust silencers. Use silent-type generators (if required). • Monitor noise levels. Maintain maximum sound levels not exceeding 80 decibels (dBA) when measured at a distance of 10 m or more from the vehicle/s. • If it is not practicable to reduce noise levels to or below noise exposure limits, the contractor must post warning signs in the noise hazard areas. Workers in a posted noise hazard area must wear hearing protection. • Identify any buildings at risk from vibration damage and avoiding any use of pneumatic drills or heavy vehicles in the vicinity. Complete work in these areas quickly.
Aesthetics	<p>The construction activities do not anticipate any cutting of trees but will produce excess excavated earth (spoils), excess construction materials, and solid waste such as removed concrete, wood, packaging materials, empty containers, spoils, oils, lubricants, and other similar items. The impacts are negative but short-term, site-specific within a relatively small area and reversible by mitigation measures.</p>	<ul style="list-style-type: none"> • Prepare the Debris Disposal Plan • Remove all construction and demolition wastes on a daily basis. • Coordinate with Muktagacha local authority for beneficial uses of excess excavated soils or immediately dispose to designated areas Avoid stockpiling of any excess spoils • Suitably dispose of collected materials from drainages, unutilized materials and debris either through filling up of pits/wasteland or at pre-designated disposal locations. • All vehicles delivering fine materials to the site and carrying waste debris for disposal shall be covered to avoid spillage of materials. All existing roads used by vehicles of the contractor, shall be kept

Field	Impacts	Mitigation Measures
		<p>clear of all dust/mud or other extraneous materials dropped by such vehicles.</p> <ul style="list-style-type: none"> • Lighting on construction sites shall be pointed downwards and away from oncoming traffic and nearby houses. • In areas where the visual environment is particularly important or privacy concerns for surrounding buildings exist, the site may require screening. This could be in the form of shade cloth, temporary walls, or other suitable materials prior to the beginning of construction. • The site must be kept clean to minimize the visual impact of the site. Manage solid waste according to the following preference hierarchy: reuse, recycling and disposal to designated areas;
B. Biological Characteristics		
Biodiversity	<p>Activities being located in the built-up area of Muktagacha <i>pourashava</i>. There are no protected areas in or around subproject sites, and no known areas of ecological interest. There are no trees along ROWs that need to be removed.</p>	<ul style="list-style-type: none"> • Check if tree-cutting will be required during detailed design stage. No trees, shrubs, or groundcover may be removed or vegetation stripped without the prior permission of project management office (PMO). • If during detailed design cutting of trees will be required, compensatory plantation for trees lost at a rate of 2 trees for every tree cut, in addition to tree plantation as specified in the design, will be implemented by the contractor, who will also maintain the saplings for the duration of his contract. • All efforts shall be made to preserve trees by evaluation of minor design adjustments/alternatives (as applicable) to save trees. • Special attention shall be given for protecting giant trees and locally-important trees (with religious importance) during implementation. • Prevent workers or any other person from removing and damaging any flora (plant/vegetation) and fauna (animal) including fishing in any water body in the subproject vicinity. • Prohibit employees from poaching wildlife and cutting of trees for firewood.
C. Socioeconomic Characteristics		
Existing provisions for pedestrians and other forms of transport	<p>Road closure is anticipated. Hauling of construction materials and operation of equipment on-site can cause traffic problems. However, the proposed subproject will follow existing ROW alignment. The impacts are negative but short-term, site-specific within a relatively small area and reversible by mitigation measures.</p>	<ul style="list-style-type: none"> • Prepare and implement a Traffic Management Plan (see Appendix 4 for sample) • Plan transportation routes so that heavy vehicles do not use narrow local roads, except in the immediate vicinity of delivery sites. • Maintain safe passage for vehicles and pedestrians throughout the construction period. • Schedule truck deliveries of construction materials during periods of low traffic volume. • Erect and maintain barricades, including signs, markings, flags and flagmen informing diversions and alternative routes when required.

Field	Impacts	Mitigation Measures
		<ul style="list-style-type: none"> • Notify affected sensitive receptors by providing sign boards informing nature and duration of construction activities and contact numbers for concerns/complaints. • Leave spaces for access between mounds of soil. • Provide walkways and metal sheets where required to maintain access across for people and vehicles. • Increase workforce in front of critical areas such as institutions, place of worship, business establishment, hospitals, and schools. • Consult businesses and institutions regarding operating hours and factoring this in work schedules. Ensure there is provision of alternate access to businesses and institutions during construction activities, so that there is no closure of these shops or any loss of clientage. • Ensure any damage to properties and utilities will be restored or compensated to pre-work conditions.
Socio-economic status	Subproject components will be located in government land and existing ROWs thus there is no requirement for land acquisition or any resettlements. Manpower will be required during the 24-month construction stage. This can result in generation of contractual employment and increase in local revenue. Thus potential impact is positive and long-term.	<ul style="list-style-type: none"> • Employ at least 50% of labor force from communities in the vicinity of the site. This will have the added benefit of avoiding social problems that sometimes occur when workers are imported into host communities, and avoiding environmental and social problems from workers housed in poorly serviced camp accommodation. • Secure construction materials from local market.
Other existing amenities for community welfare	Although construction of subproject components involves quite simple techniques of civil work, the invasive nature of excavation and the subproject sites being in built-up areas of Muktagacha <i>pourashava</i> where there are a variety of human activities, will result in impacts to the sensitive receptors such as residents, businesses, and the community in general. Excavation may also damage existing infrastructure (such as water distribution pipes, electricity pylons, etc) located alongside the roads. The impacts are negative but short-term, site-specific	<ul style="list-style-type: none"> • Obtain details from <i>pourashava</i> nature and location of all existing infrastructure, and plan excavation carefully to avoid any such sites to maximum extent possible; • Integrate construction of the various infrastructure subprojects to be conducted in Muktagacha (roads, water supply, etc.) so that different infrastructure is located on opposite sides of the road where feasible and roads and inhabitants are not subjected to repeated disturbance by construction in the same area at different times for different purposes. • Consult with local community to inform them of the nature, duration and likely effects of the construction work, and to identify any local concerns so that these can be addressed. • Existing infrastructure (such as water distribution pipes, electricity pylons, etc.) shall be relocated before construction starts at the subproject sites. • Prior permission shall be obtained from respective local authority for use of water for construction. Use of water for construction works shall not disturb

Field	Impacts	Mitigation Measures
	within a relatively small area and reversible by mitigation measures.	<p>local water users.</p> <ul style="list-style-type: none"> • If construction work is expected to disrupt users of community water bodies, notice to the affected community shall be served 7 days in advance and again 1 day prior to start of construction. • Ensure any damage to properties and utilities will be restored or compensated to pre-work conditions.
Community health and safety	Construction works will impede the access of residents and businesses in limited cases. The impacts are negative but short-term, site-specific within a relatively small area and reversible by mitigation measures. Poor safety signage and lack of barriers at work site and trenches will create hazard to pedestrians and children.	<ul style="list-style-type: none"> • Provide safety signage at all sites visible to public • Provide safety barriers near any trenches, and cover trenches with planks during non-work hours. • Contractor's activities and movement of staff will be restricted to designated construction areas. • Locations of hot-mix plants, batching plants and crushers (if these establishments are being set up exclusively for the subproject) shall be located at least 100 m away from the nearest dwelling preferably in the downwind direction. • Consult with Muktagacha local authority on the designated areas for stockpiling of, soils, gravel, and other construction materials. • If the contractor chooses to locate the work camp/storage area on private land, he must get prior permission from the environment management specialist and landowner. • Use small mechanical excavators to attain faster trenching progress. For rock and concrete breaking, use non-explosive blasting chemicals, silent rock cracking chemicals, and concrete breaking chemicals.⁶ • Under no circumstances may open areas or the surrounding bushes be used as a toilet facility. • Recycling and the provision of separate waste receptacles for different types of waste shall be encouraged. • A general regard for the social and ecological well-being of the site and adjacent areas is expected of the site staff. Workers need to be made aware of the following general rules: (i) no alcohol/drugs on site; (ii) prevent excessive noise; (iii) construction staff are to make use of the facilities provided for them, as opposed to ad hoc alternatives (e.g. fires for cooking, the use of surrounding bushes as a toilet facility); (iv) no fires permitted on site except if needed for the construction works; (v) trespassing on private/commercial properties adjoining the site is forbidden; (vi) other than pre-approved security staff, no workers shall be permitted to live on the construction site; and (vii) no worker may be forced to do work that is potentially dangerous or that he/she is not trained to do.

⁶ These products come in powder forms, and once mixed with water (being the catalyst) simply expand, and crack the rock from hole to hole. This product is environmentally friendly and can be washed away after it has been used.

Field	Impacts	Mitigation Measures
		<ul style="list-style-type: none"> Interested and affected parties need to be made aware of the existence of the complaints book and the methods of communication available to them. The contractor must address queries and complaints by: (i) documenting details of such communications; (ii) submitting these for inclusion in complaints register; (iii) bringing issues to the national/regional environmental specialist's attention immediately; and (iv) taking remedial action as per national/regional environment specialist's instruction. The contractor shall immediately take the necessary remedial action on any complaint/grievance received by him and forward the details of the grievance along with the action taken to the national/regional environmental specialist within 48 hours of receipt of such complaint/grievance.
Workers health and safety	There is invariably a safety risk when construction works such as excavation and earthmoving are conducted in urban areas. Workers need to be mindful of the occupational hazards which can arise from working in height and excavation works. Potential impacts are negative and long-term but reversible by mitigation measures.	<ul style="list-style-type: none"> Comply with requirements of Government of Bangladesh Labor Law of 2006 and all applicable laws and standards on workers health and safety (H&S). Ensure that all site personnel have a basic level of environmental awareness training. If necessary, the national/regional environmental specialist and/or a translator shall be called to the sites to further explain aspects of environmental or social behavior that are unclear. Produce and implement a site H&S plan which include measures as: (i) excluding the public from worksites; (ii) ensuring all workers are provided with and required to use personal protective equipment (reflectorized vests, footwear, gloves, goggles and masks) at all times; (iii) providing H&S training⁷ for all site personnel; (iv) documenting procedures to be followed for all site activities; and (v) maintaining accident reports and records. Arrange for readily available first aid unit including an adequate supply of sterilized dressing materials and appliances Maintain necessary living accommodation and ancillary facilities in functional and hygienic manner in work camps. Ensure (i) uncontaminated water for drinking, cooking and washing, (ii) clean eating areas where workers are not exposed to hazardous

⁷ Some of the key areas that may be covered during training as they relate to the primary causes of accidents include (i) slips, trips and falls; (ii) personal protective equipment; (iii) ergonomics, repetitive motion, and manual handling; (iv) workplace transport; and (v) legislation and responsibilities. Training can provide the foundations of competence but it does not necessarily result in a competent worker. Therefore, it is essential to assess staff competence to ensure that the training provided is relevant and effective. Supervision and monitoring arrangements shall be in place to ensure that training has been effective and the worker is competent at their job. The level of supervision and monitoring required is a management decision that shall be based on the risks associated with the job, the level of competence required, the experience of the individual and whether the worker works as part of a team or is a lone worker.

Field	Impacts	Mitigation Measures
		<p>or noxious substances; and (iii) sanitation facilities are available at all times.</p> <ul style="list-style-type: none"> • Provide medical insurance coverage for workers; • Provide H&S orientation training to all new workers to ensure that they are apprised of the basic site rules of work at the site, personal protective protection, and preventing injuring to fellow workers; • Provide visitor orientation if visitors to the site can gain access to areas where hazardous conditions or substances may be present. Ensure also that visitor/s do not enter hazard areas unescorted; • Ensure the visibility of workers through their use of high visibility vests when working in or walking through heavy equipment operating areas; • Ensure moving equipment is outfitted with audible back-up alarms; • Mark and provide sign boards for hazardous areas such as energized electrical devices and lines, service rooms housing high voltage equipment, and areas for storage and disposal. Signage shall be in accordance with international standards and be well known to, and easily understood by workers, visitors, and the general public as appropriate; and • Disallow worker exposure to noise level greater than 85 dBA for a duration of more than 8 hours per day without hearing protection. The use of hearing protection shall be enforced actively.
D. Historical, Cultural, and Archaeological Characteristics		
Physical and cultural heritage	Construction works will be on existing roads and in built-up areas of Muktagacha thus risk for chance finds is low.	<ul style="list-style-type: none"> • All fossils, coins, articles of value of antiquity, structures and other remains of archaeological interest discovered on the site shall be the property of the government. • Prevent workers or any other persons from removing and damaging any fossils, coins, articles of value of antiquity, structures and other remains of archaeological interest. • Stop work immediately to allow further investigation if any finds are suspected.

E. Anticipated Impacts and Mitigation Measures – Operations and Maintenance Phase

77. In the operations and maintenance (O&M) phase, the drainages and flood control structures will operate with routine maintenance, which should not affect the environment. The infrastructures will need to be repaired from time to time, but environmental impacts will be much less than those of the construction period as the work will be infrequent, affecting small areas only. O&M will be the responsibility of Muktagacha local authority, which will be given training by this project.

78. Routine repairs and unblocking of drains will be very small in scale, to be conducted manually by small teams of men with simple equipment (shovels, wheelbarrows, etc.) and works

will be very short in duration thus will not cause significant physical impacts. Traffic may be interrupted temporarily but this work will be very small in scale, infrequent, and short in duration, so there will be no economic or other implications. To maintain the safety of workers and road-users, such work should be coordinated with the local police department so that adequate warning signs and traffic diversions can be set up when necessary. Debris/sediments from drainages need to be collected and disposed at a designated site such as the landfill. It is important that the designated disposal site's base is of a non-permeable membrane in order to prevent leachate that can contaminate the soil and groundwater. The potential adverse impacts that are associated with O&M activities can be mitigated to acceptable levels with the following mitigation measures (Table 26).

Table 10: Anticipated Impacts and Mitigation Measures–O&M Phase

Field	Impacts	Mitigation Measures
A. Physical Characteristics		
Water quality	Run-off from stockpiled debris/sediments from drainages which may cause siltation and reduction in the quality of adjacent bodies of water. The impacts are negative but short-term, site-specific within a relatively small area and reversible by mitigation measures.	<ul style="list-style-type: none"> • Take all precautions to prevent entering of run-off into streams, watercourses, or irrigation system. Install temporary silt traps or sedimentation basins along the drainage leading to the water bodies. • Remove all debris/sediments immediately. • Dispose debris/sediments at a designated site such as landfill. It is important that the designated disposal site's base is of a non-permeable membrane in order to prevent leachate that can contaminate the soil and groundwater.
Air quality	Moving debris/sediments from drainages may create dusts during dry season. The impacts are negative but short-term, site-specific within a relatively small area and reversible by mitigation measures.	<ul style="list-style-type: none"> • Use tarpaulins to cover soils, sand and other loose material.
Acoustic environment	Temporary increase in noise level and vibrations. The impacts are negative but short-term, site-specific within a relatively small area and reversible by mitigation measures.	<ul style="list-style-type: none"> • Plan activities in consultation with Muktagacha local authority so that activities with the greatest potential to generate noise are conducted during periods of the day which will result in least disturbance. • Identify any buildings at risk from vibration damage and avoiding any use of pneumatic drills or heavy vehicles in the vicinity. Complete work in these areas quickly.
B. Biological Characteristics		
Biodiversity	Activities in the built-up area of Muktagacha <i>pourashava</i> . There are no protected areas in or around subproject sites, and no known areas of ecological interest.	<ul style="list-style-type: none"> • No trees, shrubs, or groundcover may be removed or vegetation stripped without the prior permission. • Prevent workers or any other person from removing and damaging any flora (plant/vegetation) and fauna (animal).
C. Socioeconomic Characteristics		
Existing provisions for pedestrians and other	Road closure is not anticipated. Traffic may be interrupted temporarily. The impacts are negative but short-term, site-specific	<ul style="list-style-type: none"> • Maintain safe passage for vehicles and pedestrians during maintenance activities. • Erect and maintain barricades, including signs, markings, flags and flagmen informing diversions and alternative routes when required.

Field	Impacts	Mitigation Measures
forms of transport	within a relatively small area and reversible by mitigation measures.	<ul style="list-style-type: none"> • Notify affected sensitive receptors by providing sign boards informing nature and duration of maintenance activities and contact numbers for concerns/complaints. • Leave spaces for access between mounds of soil. • Provide walkways and metal sheets where required to maintain access across for people and vehicles. • Increase workforce in front of critical areas such as institutions, place of worship, business establishment, hospitals, and schools. • Consult businesses and institutions regarding operating hours and factoring this in work schedules. • Ensure any damage to properties and utilities will be restored or compensated to pre-work conditions.
Workers health and safety	Workers need to be mindful of the occupational hazards working in confined spaces such as closed drains. Potential impacts are negative and long-term but reversible by mitigation measures.	<ul style="list-style-type: none"> • Comply with requirements of Government of Bangladesh Labor Law of 2006 and all applicable laws and standards on workers H&S. • Ensure that all site personnel have a basic level of H&S training. • Produce and implement a O&M health and safety (H&S) plan which include measures as: (i) excluding the public from worksites; (ii) ensuring all workers are provided with and required to use personal protective equipment (reflectorized vests, footwear, gloves, goggles and masks) at all times; (iii) providing (H&S) training⁸ for all site personnel; (iv) documenting procedures to be followed for all site activities; and (v) maintaining accident reports and records. • Arrange for readily available first aid unit including an adequate supply of sterilized dressing materials and appliances • Provide H&S orientation training to all new workers to ensure that they are apprised of the basic site rules of work at the site, personal protective protection, and preventing injuring to fellow workers; • Ensure the visibility of workers through their use of high visibility vests when working in or walking through heavy equipment operating areas; • Mark and provide sign boards. Signage shall be in accordance with international standards and be well

⁸ Some of the key areas that may be covered during training as they relate to the primary causes of accidents include (i) slips, trips and falls; (ii) personal protective equipment; (iii) ergonomics, repetitive motion, and manual handling; (iv) workplace transport; and (v) legislation and responsibilities. Training can provide the foundations of competence but it does not necessarily result in a competent worker. Therefore, it is essential to assess staff competence to ensure that the training provided is relevant and effective. Supervision and monitoring arrangements shall be in place to ensure that training has been effective and the worker is competent at their job. The level of supervision and monitoring required is a management decision that shall be based on the risks associated with the job, the level of competence required, the experience of the individual and whether the worker works as part of a team or is a lone worker.

Field	Impacts	Mitigation Measures
		<p>known to, and easily understood by workers, visitors, and the general public as appropriate.</p> <ul style="list-style-type: none"> Disallow worker exposure to noise level greater than 85 dBA for a duration of more than 8 hours per day without hearing protection. The use of hearing protection shall be enforced actively.
D. Historical, Cultural, and Archaeological Characteristics		
Physical and cultural heritage	Construction works will be on existing drainages and built-up areas of Muktagacha thus risk for chance finds is low.	<ul style="list-style-type: none"> All fossils, coins, articles of value of antiquity, structures and other remains of archaeological interest discovered on the site shall be the property of the government. Prevent workers or any other persons from removing and damaging any fossils, coins, articles of value of antiquity, structures and other remains of archaeological interest. Stop work immediately to allow further investigation if any finds are suspected.

F. Cumulative Impact Assessment

79. The cumulative impact assessment examined the interaction between the subproject's residual effects (i.e., those effects that remain after mitigation measures have been applied) and those associated with other past, existing, and reasonably foreseeable future projects or activities. The interaction of residual effects associated with multiple projects and/or activities can result in cumulative impacts, both positive and negative. The project's potential cumulative effects were considered with respect to valued components in environmental and socioeconomic categories, in four areas:

- (i) of any potential residual project effects that may occur incrementally over time;
- (ii) consideration of other known relevant projects or activities within the specified study area boundaries, even if not directly related to the project;
- (iii) potential overlapping impacts that may occur due to other developments, even if not directly related to the proposed subproject; and
- (iv) future developments that are reasonably foreseeable and sufficiently certain to proceed.

80. The project has identified the valued components as air quality, acoustic environment, socioeconomic and socio-community components, and human health and safety. There are no foreseeable projects that will overlap with the subproject. The spatial boundary of the subproject is the area along the corridor of impact (alignment and width of the drainages and ROWs) and the temporal boundary can be considered as the whole Muktagacha *pourashava*.

81. It is recommended that infrastructures be (i) designed to the current best practice standard and notified Government of Bangladesh codes; (ii) built that the floods do not damage them; and (iii) side drains are to be kept free from wastes and siltation. Short-term negative impacts are the same with or without climate change measures except that with climate change measures there are increased demand for construction materials and more time to complete the works. No negative cumulative impact and the potential long-term environmental impacts are positive; including mainstreaming climate risk reduction into infrastructure development ensures subprojects infrastructure are less vulnerable to floods, storm surge, landslides and impacts of other extreme weather events.

82. **Air quality.** Emissions of common air contaminants and fugitive dust may be elevated in proximity to active work sites during construction and O&M phases, these impacts will be short-term and localized to the immediate vicinity of drainages. Greenhouse gas (GHG) emissions may increase as a result of the subproject activities (i.e., vehicle and equipment operation, concrete production, disposal of excavated material, land-filling of residual wastes). Given the subproject's relatively minor contribution to common air contaminants and GHG emissions during construction, the overall significance rating of both these potential residual effects is considered to be negligible.

83. **Acoustic environment.** Noise levels during construction and O&M activities in immediate proximity of work sites are expected to increase. The duration of exposure will be relatively brief and imperceptible. The exposure represents a temporary, localized, adverse residual effect of low significance for affected receptors. While building damage due to ground vibrations is unlikely, there may be annoyance to spatially located receptors during construction and O&M activities. The overall significance rating of potential residual effects is considered to be negligible.

84. **Socioeconomic and socio-community.** Concerns on existing provisions for pedestrians and other forms of transport will occur spatially during construction and O&M activities. Traffic movement along the roads will be improved once the activities are completed. Since the subproject will be improvement of existing infrastructures, it will not conflict with existing or planned land use. However, following improvement in infrastructures and services, added residential developments, commercial, and business facilities and increased densities are expected to develop and enhance Muktagacha *pourashava*. This can be considered a long-term cumulative benefit of the subproject.

85. Given the scale of the project it is likely that local people will obtain at least temporary socio-economic benefits, by gaining employment in the construction workforce, and thus raising their levels of income. These benefits can bring wider social gains if they are directed at vulnerable⁹ groups.

86. Upon completion of the project, the socio-community will be the major beneficiaries of this subproject. The citizens, businesses, and communities in Muktagacha will be provided with reliable and climate-resilient drainage resulting to less flooding and enhanced safety, cost savings, and economic growth. Benefits for all Muktagacha citizens include: reduced flooding and related positive economic impact, and improved quality of life. These are considered a long-term cumulative benefit.

87. **Community and workers health and safety.** No adverse residual effects to human health will occur as a result of construction or O&M activities, and mitigation measures are in place to ensure public and worker safety, and will be closely monitored. While exposure to elevated noise levels, fugitive dust and common air pollutants will occur in proximity to work sites, due to their short-term and localized nature, these effects are expected to be minor and insignificant with no measurable effects on human health.

⁹ Vulnerable groups as those without legal title to land and other assets; households headed by single earner females, the elderly or disabled; indigenous peoples (based on ADB OM); and households with incomes that are below the poverty line.

88. Therefore the project will benefit the general public by contributing to the long-term improvement of municipal services and community livability in Muktagacha *pourashava*.

VI. INFORMATION DISCLOSURE, CONSULTATION, AND PARTICIPATION

A. Public Consultation Conducted

89. The public participation process included (i) identifying interested and affected parties (stakeholders); (ii) informing and providing the stakeholders with sufficient background and technical information regarding the proposed development; (iii) creating opportunities and mechanisms whereby they can participate and raise their viewpoints (issues, comments, and concerns) with regard to the proposed development; (iv) giving the stakeholders feedback on process findings and recommendations; and (v) ensuring compliance to process requirements with regards to the environmental and related legislation.

90. Public consultations and focus group discussions (FGDs) were conducted by PPTA team on September 10, 2014. The objective of the meetings was to appraise the stakeholders about environmental and social impacts of the proposed subproject and safeguards to mitigate the same. A questionnaire was designed and environmental information was collected. Key respondents included project-affected persons, who may suffer temporary access disruptions during construction activities, shopkeepers/businessmen from the subproject area, and daily commuters consulted randomly. Issues discussed and feedback received along with details of date, time, location, and list of participants are given in **Appendix 13**. The environmental concerns and suggestions made by the participants were listed, and discussed, and suggestions accordingly incorporated in the EMP. These include speedy construction works to ensure low impacts to community. Participants also considered the project will provide local employment.

B. Future Consultation and Disclosure

91. This IEE and other relevant documents will be made available at public locations in the *pourashava* and posted on the websites of executing agencies and ADB. The consultation process will be continued and expanded during the project implementation to ensure stakeholders participate fully in project execution, as well as to implement comprehensive information, education, and communication plan.

92. The public consultation and disclosure program with all interested and affected parties will remain a continuous process throughout the project implementation, and shall include the following:

- (i) **Consultations during construction phase:** (a) public meetings with affected communities to discuss and plan work programs and allow issues to be raised and addressed once construction has started; and (b) smaller-scale meetings to discuss and plan construction work with individual communities to reduce disturbance and other impacts, and to provide a mechanism through which stakeholders can participate in project monitoring and evaluation.
- (ii) **Project disclosure:** (a) public information campaigns (via newspaper, flyers, and media) to explain the project to the wider city population and prepare them for disruptions they may experience once construction is underway; (b) public

disclosure meetings at key project stages to inform the public of progress and future plans, and to provide copies of summary documents in local language; (c) formal disclosure of completed project reports by making copies available at convenient locations in the study areas, and informing the public of their availability; and (d) providing a mechanism through which comments can be made.

93. For the benefit of the community, relevant information from the IEE will be translated in the local language and made available at (i) offices of executing and implementing agencies, (ii) area offices, (iii) consultant teams' offices; and (iv) contractor's campsites. It will be ensured that the hard copies of IEE are kept at places which are conveniently accessible to people, as a means to disclose the document and at the same time creating wider public awareness. An electronic version of the IEE will be placed in the official website of executing and implementing agencies and the ADB website after approval of the IEE by ADB.

VII. GRIEVANCE REDRESS MECHANISM

94. A project-specific grievance redress mechanism (GRM) will be established to receive, evaluate, and facilitate the resolution of AP's concerns, complaints, and grievances about the social and environmental performance at the level of the project. The GRM will aim to provide a time-bound and transparent mechanism to voice and resolve social and environmental concerns linked to the project.

95. **Common GRM.** A common GRM will be in place for social, environmental, or any other grievances related to the project; the resettlement plans (RPs) and IEEs will follow the GRM described below, which is developed in consultation with key stakeholders. The GRM will provide an accessible and trusted platform for receiving and facilitating resolution of affected persons' grievances related to the project. The multi-tier GRM for the project is outlined below, each tier having time-bound schedules and with responsible persons identified to address grievances and seek appropriate persons' advice at each stage, as required.

96. *Pourashava*-wide public awareness campaigns will ensure that awareness on grievance redress procedures is generated through the campaign. The project implementation unit (PIU) and governance improvement and capacity development consultants (GICDC) will conduct *pourashava*-wide awareness campaigns to ensure that poor and vulnerable households are made aware of grievance redress procedures and entitlements, and will work with the PMO and management, design and supervision consultants (MDSC) to help ensure that their grievances are addressed.

97. Affected persons (APs) will have the flexibility of conveying grievances/suggestions by dropping grievance redress/suggestion forms in complaints/suggestion boxes that have already been installed by project *pourashavas* or through telephone hotlines at accessible locations, by e-mail, by post, or by writing in a complaints register in *pourashava* offices. Appendix 15 has the sample grievance registration form. Careful documentation of the name of the complainant, date of receipt of the complaint, address/contact details of the person, location of the problem area, and how the problem was resolved will be undertaken. The project management office (PMO) safeguard officer will have the overall responsibility for timely grievance redressal on environmental and social safeguards issues and for registration of grievances, related disclosure, and communication with the aggrieved party through the PIU designated safeguard focal person.

98. **Grievance redress process.** In case of grievances that are immediate and urgent in the perception of the complainant, the contractor and MDSC on-site personnel will provide the most easily accessible or first level of contact for quick resolution of grievances. Contact phone numbers and names of the concerned PIU safeguard focal person and contractors, will be posted at all construction sites at visible locations.

- (i) **1st Level Grievance.** The phone number of the PIU office should be made available at the construction site signboards. The contractors and PIU safeguard focal person can immediately resolve on-site in consultation with each other, and will be required to do so within 7 days of receipt of a complaint/grievance.
- (ii) **2nd Level Grievance.** All grievances that cannot be redressed within 7 days at field/ward level will be reviewed by the grievance redress cell (GRC) headed by Panel Mayor of the pourashava with support from PIU designated safeguard focal person and MDSC regional environment and resettlement specialists. GRC will attempt to resolve them within 15 days.¹⁰ The PIU designated safeguard focal person will be responsible to see through the process of redressal of each grievance.
- (iii) **3rd Level Grievance.** The PIU designated safeguard focal person will refer any unresolved or major issues to the PMO safeguard officer and MDSC national environmental and resettlement specialists. The PMO in consultation with these officers/specialists will resolve them within 30 days.

99. Despite the project GRM, an aggrieved person shall have access to the country's legal system at any stage, and accessing the country's legal system can run parallel to accessing the GRM and is not dependent on the negative outcome of the GRM.

100. In the event that the established GRM is not in a position to resolve the issue, the affected person also can use the ADB Accountability Mechanism (AM) through directly contacting (in writing) the Complaint Receiving Officer (CRO) at ADB headquarters or the ADB Bangladesh Resident Mission (BRM). The complaint can be submitted in any of the official languages of ADB's DMCs. The ADB Accountability Mechanism information will be included in the PID to be distributed to the affected communities, as part of the project GRM.

101. **Recordkeeping.** Records of all grievances received, including contact details of complainant, date the complaint was received, nature of grievance, agreed corrective actions and the date these were effected and final outcome will be kept by PIU. The number of grievances recorded and resolved and the outcomes will be displayed/disclosed in the PMO office, *pourashava* office, and on the web, as well as reported in monitoring reports submitted to ADB on a semi-annual basis.

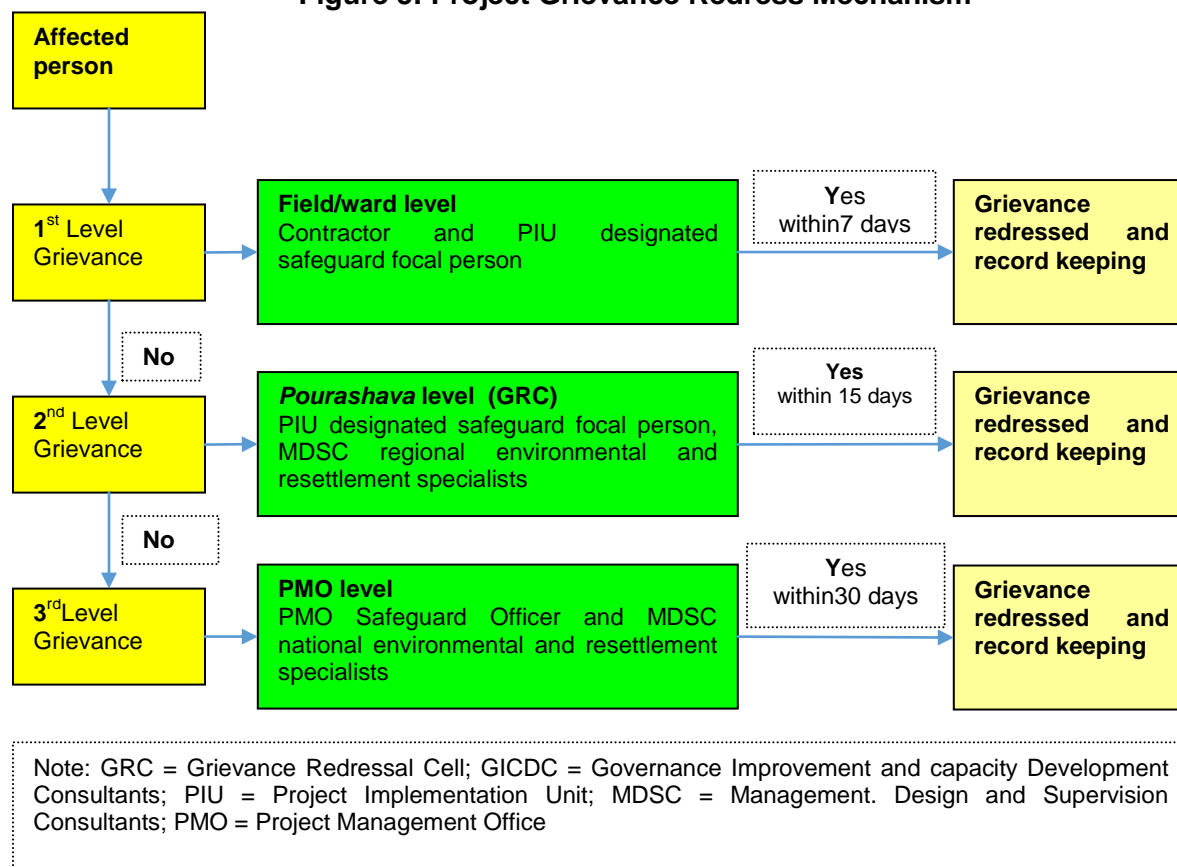
102. **Periodic review and documentation of lessons learned.** The PMO safeguard officer will periodically review the functioning of the GRM in each *pourashava* and record information

¹⁰ Grievance redress cell (GRC) will have been formed at Pourashava-level. For example in Lalmonirhat pourashava, the GRC comprises Panel Mayor as Chairperson, and 1 councilor, the pourashava Executive Engineer, Secretary *pourashava* and *pourashava* administrative officer, as members. All *pourashava*-level GRCs shall have at least one-woman member/chairperson and AP representative or independent NGO as committee member. In addition, for project-related grievances, representatives of APs, community-based organizations (CBOs), and eminent citizens must be invited as observers in GRC meetings.

on the effectiveness of the mechanism, especially on the project's ability to prevent and address grievances.

103. **Costs.** All costs involved in resolving the complaints (meetings, consultations, communication and reporting/information dissemination) will be borne by the concerned PIU at *pourashava*-level; while costs related to escalated grievances will be met by the PMO. Cost estimates for grievance redress are included in resettlement cost estimates.

Figure 5: Project Grievance Redress Mechanism



VIII. ENVIRONMENTAL MANAGEMENT PLAN

104. The purpose of the environmental management plan (EMP) is to ensure that the activities are undertaken in a responsible, non-detrimental manner with the objectives of: (i) providing a proactive, feasible, and practical working tool to enable the measurement and monitoring of environmental performance on-site; (ii) guiding and controlling the implementation of findings and recommendations of the environmental assessment conducted for the project; (iii) detailing specific actions deemed necessary to assist in mitigating the environmental impact of the project; and (iv) ensuring that safety recommendations are complied with.

105. A copy of the EMP must be kept on work sites at all times. This EMP will be included in the bid documents and will be further reviewed and updated during implementation. The EMP will be made binding on all contractors operating on the site and will be included in the

contractual clauses. Non-compliance with, or any deviation from, the conditions set out in this document constitutes a failure in compliance.

106. For civil works, the contractor will be required to (i) establish an operational system for managing environmental impacts (ii) carry out all of the monitoring and mitigation measures set forth in the EMP; and (iii) implement any corrective or preventative actions set out in safeguards monitoring reports that the employer will prepare from time to time to monitor implementation of this IEE and EMP. The contractor shall allocate a budget for compliance with these EMP measures, requirements and actions.

A. Institutional Arrangement

107. **Executing and implementing agencies.** The Local Government Engineering Department (LGED) and the Department of Public Health Engineering (DPHE), both under the Local Government Division (LGD) of the Ministry of Local Government, Rural Development and Cooperatives (MLGRD&C) and having extensive experience in managing urban and water supply projects financed by ADB, will be the executing agencies of the project. The participating *pourashavas* will be the implementing agencies.

B. Safeguard Implementation Arrangement

108. **Project management office.** A PMO will be established for the overall management of the project. The PMO will be headed by Project Director (PD) supported by officials including three project managers in charge of (i) municipal infrastructure (excluding water supply and sanitation), (ii) water supply and sanitation, and (iii) governance improvement and capacity development, respectively. the PMO will receive support from national environmental specialist and national resettlement specialist on the MDSC team. Key tasks and responsibilities of the PMO Safeguard (Environment) Officer are as follows:

- (i) confirm existing IEEs/EMPs are updated based on detailed designs, and that new IEEs/EMPs are prepared in accordance with the EARF and subproject selection criteria related to safeguards;
- (ii) confirm whether IEEs/EMPs are included in bidding documents and civil works contracts;
- (iii) provide oversight on environmental management aspects of subprojects and ensure EMPs are implemented by project implementation unit (PIU) and contractors;
- (iv) establish a system to monitor environmental safeguards of the project, including monitoring the indicators set out in the monitoring plan of the EMP;
- (v) facilitate and confirm overall compliance with all government rules and regulations regarding site and environmental clearances, as well as any other environmental requirements (e.g., location clearance certificates, environmental clearance certificates, etc.), as relevant;
- (vi) supervise and provide guidance to the PIUs to properly carry out the environmental monitoring and assessments as per the EARF;
- (vii) review, monitor, and evaluate the effectiveness with which the EMPs are implemented, and recommend necessary corrective actions to be taken as necessary;
- (viii) consolidate monthly environmental monitoring reports from PIUs and submit semi-annual monitoring reports to ADB;

- (ix) ensure timely disclosure of final IEEs/EMPs in locations and form accessible to the public; and
- (x) address any grievances brought about through the grievance redress mechanism in a timely manner.

109. **Project implementation unit.** The participating *pourashavas* will establish a PIU within the *pourashava* structure. The PIUs will (i) be responsible for land acquisition; (ii) take necessary action for obtaining rights of way; (iii) plan, implement and monitor public relations activities, gender mainstreaming initiatives and community participation activities at *pourashava* level; (iv) disseminate information related to the project to the public and media; (v) ensure compliance with loan covenants concerning safeguards measures; and (vi) facilitate implementation of safeguards plans. The PIUs will each designate a Safeguard Officer¹¹ and will receive assistance from the assigned MDSC regional environmental specialist to:

- (i) update IEEs/EMPs during detailed design stage and prepare new IEEs/EMPs in accordance with the EARF;
- (ii) conduct environmental compliance audit of existing facilities as per Item F, Appendix 6 of ADB SPS, 2009;
- (iii) include IEEs/EMPs in bidding documents and civil works contracts;
- (iv) comply with all government rules and regulations;
- (v) take necessary action for obtaining rights of way;
- (vi) oversee implementation of EMPs including environmental monitoring by contractors;
- (vii) take corrective actions when necessary to ensure no environmental impacts;
- (viii) submit monthly environmental monitoring reports to PMO,
- (ix) conduct continuous public consultation and awareness;
- (x) address any grievances brought about through the Grievance Redress Mechanism in a timely manner as per the IEEs; and
- (xi) organize an induction course for the training of contractors preparing them on EMP implementation, environmental monitoring requirements related to mitigation measures; and taking immediate actions to remedy unexpected adverse impacts or ineffective mitigation measures found during the course of implementation.

110. **Project Management, Design and Supervision Consultants (MDSC).** MDSC will be engaged to work closely with and advise the PMO, to be involved in project supervision including monitoring during construction phase. The MDSC will have one national environmental specialist and three regional environmental specialist as well as one national resettlement specialist and three regional resettlement specialist. The MDSC national environmental specialist will, but not limited to:

- (i) work under the general supervision of the team leader and the deputy team leader;
- (ii) review the environmental guidelines and requirement of the government of Bangladesh and ADB SPS, 2009, environmental subproject selection guidelines and EARF;
- (iii) Guide the implementation of future subprojects;

¹¹ It is recommended that existing *pourashava* health officer or executive engineer will also work as safeguard officer in addition to his/her regular responsibilities within the *pourashava*.

provide technical support to the PMO and PIUs including review and update of EARF and guidelines for specific type of subprojects and assist in preparing terms of reference for environmental assessment;

- (iv) assist and guide the MDSC regional environmental specialists to provide support to environmental management functions including updating subproject IEEs in respect to EMP;
- (v) assist in preparing IEEs and in monitoring impact and mitigation measures associated with subprojects;
- (vi) assist PIUs and MDSC regional environmental specialists working in the steps for preparing the EIA/IEE, capacity building and training, preparation of guidelines and procedure and subproject specific guidance;
- (vii) provide support and guidance to PIUs in undertaking environmental monitoring
- (viii) support PMU in submitting semi-annual environmental monitoring reports to ADB;
- (ix) facilitate in grievance redress and corrective actions;
- (x) train PIU officials regarding environmental requirement and issues; and
- (xi) perform any other task assigned by the team leader, deputy team leader and the project director.

111. The MDSC regional environmental specialists will, but not limited to:

- (i) work under the supervision and guidance of the team leader, deputy team leader and MDSC national environmental specialist;
- (ii) assist PIUs in preparing and updating IEEs including EMPs in accordance with the EARF, and assist in monitoring impact and mitigation measures associated with subprojects including implementation of EMPs by contractors;
- (iii) assist in preparation of IEEs and in the environmental review of subproject consisting of screening at *pourashava* level by PIU through a committee formed with municipal mayor as chairman and representatives from DOE, LGED and other relevant district office as members;
- (iv) assist PIUs in the steps for preparing EIA/IEE, capacity building and training, preparation of guidelines and procedure and subproject specific guidance;
- (v) support PIU in environmental monitoring and submit monitoring reports to PMU as inputs into the semi-annual monitoring report submitted to ADB;
- (vi) undertake mitigation measures and other specific measures in the construction contract;
- (vii) facilitate in grievance redress and corrective actions;
- (viii) follow subproject selection guidelines and EARF to ensure compliance with the environmental guidelines and requirement of the Government of Bangladesh and ADB SPS, 2009;
- (ix) support PMO and MDSC national environment specialist by providing data, information and all other requested assistance;
- (x) train PIU officials regarding environmental issues
- (xi) perform any other task assigned by MDSC national environment specialist, team leader, deputy team leader and the project director.

112. **Civil works contracts and contractors.** EMPs are to be included in bidding and contract documents and verified by the PIUs and PMO. The contractor will be required to designate an environmental supervisor to (i) coordinate with MDSC on updating the IEE/EMP based on detailed designs, and (ii) ensure implementation of EMP during civil works.

Contractors are to carry out all environmental mitigation and monitoring measures outlined in their contract.

113. **Governance Improvement and Capacity Development Consultants (GICDC).** The PMO and PIUs will require support on a range of activities related to governance improvement and capacity development of *pourashavas*. The GICDC will support PMO and PIUs in implementing urban government improvement action plan (UGIAP) by providing capacity development, community mobilization and other facilitation services. There will be 4 GICDC regional offices consisting of 4 regional coordinators at each regional office. There will be 2 community mobilizers in each project *pourashava*. The regional coordinators will assist *pourashavas* and the local capacity development experts in the activities related to community participation and inclusive development. The community mobilizers will be posted at the *pourashava* and will (i) have to work maintaining close liaison with the mayor, councilors, *pourashava* staffs and communities, (ii) provide assistance and support to PIU regarding planning and implementation of citizen awareness and participation activities, urban planning, equity and inclusiveness of women and urban poor. The GICDC will also have a training specialist who will be responsible for identifying and coordinating capacity building activities at *pourashava* level.

Figure 6: Safeguards Implementation Arrangement

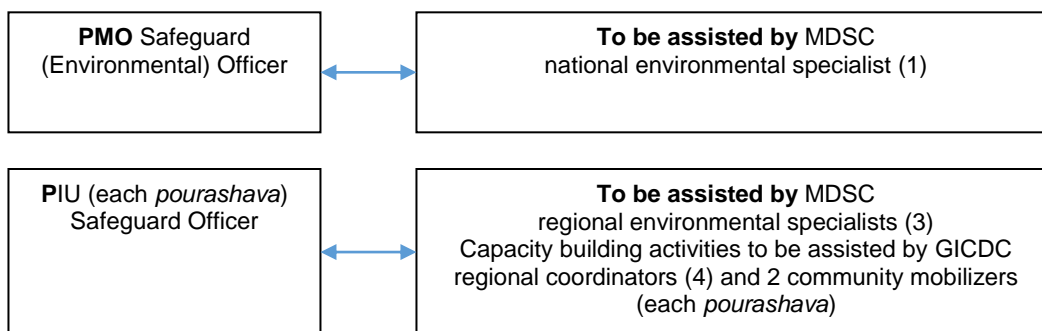


Table 11: Environmental Management and Monitoring Plan–Prior, During, and Post Construction Phase

Field	Impacts	Mitigation Measures	Responsible for Implementation	Monitoring Indicator	Frequency of Monitoring	Cost and Source of Funds
1. Prior to Construction Activities						
Consents, permits, clearances, no objection certificate (NOC), etc.	Failure to obtain necessary consents, permits, NOCs, etc can result to design revisions and/or stoppage of works	<ul style="list-style-type: none"> Obtain all necessary consents, permits, clearance, NOCs, etc. prior to start of civil works. Acknowledge in writing and provide report on compliance all obtained consents, permits, clearance, NOCs, etc. Include in detailed design drawings and documents all conditions and provisions if necessary 	Project management unit (PMO), project implementing unit (PIU), Management Design Supervision Consultants (MDSC)	<ul style="list-style-type: none"> Incorporated in final design and communicated to contractors. 	<ul style="list-style-type: none"> Prior to award of contract 	<ul style="list-style-type: none"> No cost required. Cost of obtaining all consents, permits, clearance, NOCs, etc. prior to start of civil works responsibility of PMO and PIU. Mitigation measures are included as part of TOR of PMO, PIU, MDSC
Updating of IEE based on detailed design	Site-specific impacts not identified, mitigation measures not appropriate and sufficient to address impacts	<ul style="list-style-type: none"> Update IEE and EMP based on detailed design Ensure updated EMP is provided to contractors Relevant information disclosed 	PMO	<ul style="list-style-type: none"> Updated IEE and EMP reviewed, approved and disclosed 	<ul style="list-style-type: none"> Upon completion of detailed design 	<ul style="list-style-type: none"> No additional cost required
Existing utilities	Disruption of services.	<ul style="list-style-type: none"> Identify and include locations and operators of these utilities in the detailed design documents to prevent unnecessary disruption of services during construction activities Require construction contractors to prepare a contingency plan 	PMO, PIU, MDSC	<ul style="list-style-type: none"> List of affected utilities and operators; Bid document to include requirement for a contingency plan for service interruptions (example provision of water if disruption is more than 24 hours), spoil management plan (Appendix 3), and 	<ul style="list-style-type: none"> During detailed design phase Review of spoils management plan: Twice (once after first draft and once before final approval) 	<ul style="list-style-type: none"> No cost required. Mitigation measures are included as part of TOR of PMO, PIU, MDSC.

Field	Impacts	Mitigation Measures	Responsible for Implementation	Monitoring Indicator	Frequency of Monitoring	Cost and Source of Funds
		to include actions to be done in case of unintentional interruption of services. <ul style="list-style-type: none"> Require contractors to prepare spoils management plan (see Appendix 3 for outline) and traffic management plan (see Appendix 12 for sample) 		traffic management plan (Appendix 4)		
Construction work camps, hot mix plants, stockpile areas, storage areas, and disposal areas.	Disruption to traffic flow and sensitive receptors	<ul style="list-style-type: none"> Determine locations prior to award of construction contracts. 	PMO, PIU, and MDSC	<ul style="list-style-type: none"> List of selected sites for construction work camps, hot mix plants, stockpile areas, storage areas, and disposal areas. Written consent of landowner/s (not lessee/s) for reuse of excess spoils to agricultural land 	<ul style="list-style-type: none"> During detailed design phase 	<ul style="list-style-type: none"> No cost required. Mitigation measures are included as part of TOR of PMO, PIU, and MDSC.
Sources of Materials	Extraction of materials can disrupt natural land contours and vegetation resulting in accelerated erosion, disturbance in natural drainage patterns, ponding and water logging, and water pollution.	<ul style="list-style-type: none"> Prepare list of approved quarry sites and sources of materials 	PMO, PIU, and MDSC	<ul style="list-style-type: none"> List of approved quarry sites and sources of materials; Bid document to include requirement for verification of suitability of sources and permit for additional quarry sites if necessary. 	<ul style="list-style-type: none"> During detailed design phase, as necessary with discussion with detailed design engineers and PIUs 	<ul style="list-style-type: none"> No cost required. Mitigation measures are included as part of TOR of PMO, PIU, and MDSC.
EMP Implementation Training	Irreversible impact to the environment,	<ul style="list-style-type: none"> Project manager and all key workers will be 	Construction Contractor	<ul style="list-style-type: none"> Proof of completion (Safeguards 	<ul style="list-style-type: none"> During detailed design phase prior to 	<ul style="list-style-type: none"> Cost of EMP

Field	Impacts	Mitigation Measures	Responsible for Implementation	Monitoring Indicator	Frequency of Monitoring	Cost and Source of Funds
	workers, and community	required to undergo EMP implementation including spoils management, Standard operating procedures (SOP) for construction works; health and safety (H&S), core labor laws, applicable environmental laws, etc		Compliance (Orientation) <ul style="list-style-type: none"> Posting of proof of completion at worksites Posting of EMP at worksites 	mobilization of workers to site	Implementation Orientation Training to contractor is responsibility of PMO and PIU. <ul style="list-style-type: none"> Other costs responsibility of contractor.
2. During Construction Activities						
A. Physical Characteristics						
Topography, landforms, geology and soils	Significant amount of gravel, sand, and cement will be required for this subproject. Extraction of construction materials may cause localized changes in topography and landforms. The impacts are negative but short-term, site-specific within a relatively small area and reversible by mitigation measures.	<ul style="list-style-type: none"> Utilize readily available sources of materials. If contractor procures materials from existing borrow pits and quarries, ensure these conform to all relevant regulatory requirements. Borrow areas and quarries (If these are being opened up exclusively for the subproject) must comply with environmental requirements, as applicable. No activity will be allowed until formal agreement is signed between PIU, landowner and contractor. 	Construction Contractor	<ul style="list-style-type: none"> Records of sources of materials 	Monthly by PIU	<ul style="list-style-type: none"> Cost for implementation of mitigation measures responsibility of contractor.
Water quality	Trenching and excavation, run-off from stockpiled materials, and chemical	<ul style="list-style-type: none"> Prioritize re-use of excess spoils and materials in construction activities. If spoils will be disposed, consult with Muktagacha local authority on 	Construction Contractor	<ul style="list-style-type: none"> Areas for stockpiles, storage of fuels and lubricants and waste materials; Number of silt traps installed along 	<ul style="list-style-type: none"> Visual inspection by PIU and supervision consultants on monthly basis Frequency and 	<ul style="list-style-type: none"> Cost for implementation of mitigation measures responsibility of

Field	Impacts	Mitigation Measures	Responsible for Implementation	Monitoring Indicator	Frequency of Monitoring	Cost and Source of Funds
	contamination from fuels and lubricants may result to silt-laden runoff during rainfall which may cause siltation and reduction in the quality of adjacent bodies of water. The impacts are negative but short-term, site-specific within a relatively small area and reversible by mitigation measures.	<p>designated disposal areas.</p> <ul style="list-style-type: none"> All earthworks must to be conducted during dry season to maximum extent possible to avoid the difficult working conditions that prevail during monsoon season such as problems from runoff. Location for stockyards for construction materials shall be identified at least 300m away from watercourses. Place storage areas for fuels and lubricants away from any drainage leading to water bodies. Take all precautions to minimize the wastage of water in the construction activities. Take all precautions to prevent entering of wastewater into streams, watercourses, or irrigation system. Install temporary silt traps or sedimentation basins along the drainage leading to the water bodies. Ensure diverting storm water flow during construction shall not lead to inundation and other nuisances in low lying areas. While working across or close to any water body, the flow of water must 		<p>trenches leading to water bodies;</p> <ul style="list-style-type: none"> Records of surface water quality inspection; Effectiveness of water management measures; No visible degradation to nearby drainages, <i>khals</i> or water bodies due to construction activities 	sampling sites to be finalized during detailed design stage and final location of subproject components	contractor.

Field	Impacts	Mitigation Measures	Responsible for Implementation	Monitoring Indicator	Frequency of Monitoring	Cost and Source of Funds
		<p>not be obstructed. Ensure no construction materials like earth, stone, or appendage are disposed of in a manner that may block the flow of water of any watercourse and cross drainage channels.</p> <ul style="list-style-type: none"> • Monitor water quality according to the environmental management plan. 				
Air quality	<p>Conducting works at dry season and moving large quantity of materials may create dusts and increase in concentration of vehicle-related pollutants (such as carbon monoxide, sulfur oxides, particulate matter, nitrous oxides, and hydrocarbons) which will affect people who live and work near the sites. The impacts are negative but short-term, site-specific within a relatively small area and</p>	<ul style="list-style-type: none"> • Damp down exposed soil and any sand stockpiled on site by spraying with water when necessary during dry weather; • Use tarpaulins to cover soils, sand and other loose material when transported by trucks. • Unpaved surfaces used for haulage of materials within settlements shall be maintained dust-free. • Arrangements to control dust through provision of windscreens, water sprinklers, and dust extraction systems shall be provided at all hot-mix plants, batching plants and crushers (if these establishments are being set up exclusively for the subproject). • Monitor air quality. 	Construction Contractor	<ul style="list-style-type: none"> • Location of stockpiles; • Number of complaints from sensitive receptors; • Heavy equipment and machinery with air pollution control devices; • Certification that vehicles are compliant with air quality standards. 	<ul style="list-style-type: none"> • Visual inspection by PIU and supervision consultants on monthly basis • Frequency and sampling sites to be finalized during detailed design stage and final location of subproject components 	<ul style="list-style-type: none"> • Cost for implementation of mitigation measures responsibility of contractor.

Field	Impacts	Mitigation Measures	Responsible for Implementation	Monitoring Indicator	Frequency of Monitoring	Cost and Source of Funds
	reversible by mitigation measures.					
Acoustic environment	Construction activities will be on settlements, along and near schools, and areas with small-scale businesses. Temporary increase in noise level and vibrations may be caused by excavation equipment, and the transportation of equipment, materials, and people. However, the proposed subproject will follow existing ROW alignment and impact is short-term, site-specific and within a relatively small area. The impacts are negative but short-term, site-specific within a relatively small area and	<ul style="list-style-type: none"> Involve the community in planning the work program so that any particularly noisy or otherwise invasive activities can be scheduled to avoid sensitive times. Plan activities in consultation with Muktagacha local authority so that activities with the greatest potential to generate noise are conducted during periods of the day which will result in least disturbance. Use of high noise generating equipment shall be stopped during night time. Horns should not be used unless it is necessary to warn other road users or animals of the vehicle's approach; Utilize modern vehicles and machinery with the requisite adaptations to limit noise and exhaust emissions, and ensure that these are maintained to manufacturers' specifications at all times. All vehicles and equipment used in construction shall be fitted with exhaust silencers. Use 	Construction Contractor	<ul style="list-style-type: none"> Number of complaints from sensitive receptors; Use of silencers in noise-producing equipment and sound barriers; Equivalent day and night time noise levels 	<ul style="list-style-type: none"> Visual inspection by PIU and supervision consultants on monthly basis Frequency and sampling sites to be finalized during detailed design stage and final location of subproject components 	<ul style="list-style-type: none"> Cost for implementation of mitigation measures responsibility of contractor.

Field	Impacts	Mitigation Measures	Responsible for Implementation	Monitoring Indicator	Frequency of Monitoring	Cost and Source of Funds
	reversible by mitigation measures.	<p>silent-type generators (if required).</p> <ul style="list-style-type: none"> • Monitor noise levels. Maintain maximum sound levels not exceeding 80 decibels (dBA) when measured at a distance of 10 m or more from the vehicle/s. • If it is not practicable to reduce noise levels to or below noise exposure limits, the contractor must post warning signs in the noise hazard areas. Workers in a posted noise hazard area must wear hearing protection. • Identify any buildings at risk from vibration damage and avoiding any use of pneumatic drills or heavy vehicles in the vicinity. Complete work in these areas quickly. 				
Aesthetics	The construction activities do not anticipate any cutting of trees but will produce excess excavated earth (spoils), excess construction materials, and solid waste such as	<ul style="list-style-type: none"> • Prepare the Debris Disposal Plan • Remove all construction and demolition wastes on a daily basis. • Coordinate with Muktagacha local authority for beneficial uses of excess excavated soils or immediately dispose to designated areas Avoid stockpiling of any excess spoils 	Construction Contractor	<ul style="list-style-type: none"> • Number of complaints from sensitive receptors; • Worksite clear of hazardous wastes such as oil/fuel • Worksite clear of any wastes, collected materials from drainages, unutilized materials and debris • Transport route and worksite 	<ul style="list-style-type: none"> • Visual inspection by PIU and supervision consultants on monthly basis • Frequency and sampling sites to be finalized during detailed design stage and final location of) subproject components 	<ul style="list-style-type: none"> • Cost for implementation of mitigation measures responsibility of contractor.

Field	Impacts	Mitigation Measures	Responsible for Implementation	Monitoring Indicator	Frequency of Monitoring	Cost and Source of Funds
	removed concrete, wood, packaging materials, empty containers, spoils, oils, lubricants, and other similar items. The impacts are negative but short-term, site-specific within a relatively small area and reversible by mitigation measures.	<ul style="list-style-type: none"> • Suitably dispose of collected materials from drainages, unutilized materials and debris either through filling up of pits/wasteland or at pre-designated disposal locations. • All vehicles delivering fine materials to the site and carrying waste debris for disposal shall be covered to avoid spillage of materials. All existing roads used by vehicles of the contractor, shall be kept clear of all dust/mud or other extraneous materials dropped by such vehicles. • Lighting on construction sites shall be pointed downwards and away from oncoming traffic and nearby houses. • In areas where the visual environment is particularly important or privacy concerns for surrounding buildings exist, the site may require screening. This could be in the form of shade cloth, temporary walls, or other suitable materials prior to the beginning of construction. • The site must be kept clean to minimize the visual impact of the site. Manage solid waste according to the following 		cleared of any dust/mud		

Field	Impacts	Mitigation Measures	Responsible for Implementation	Monitoring Indicator	Frequency of Monitoring	Cost and Source of Funds
		preference hierarchy: reuse, recycling and disposal to designated areas;				
B. Biological Characteristics						
Biodiversity	Activities being located in the built-up area of Muktagacha <i>pourashava</i> . There are no protected areas in or around subproject sites, and no known areas of ecological interest. There are no trees at the site that need to be removed.	<ul style="list-style-type: none"> Check if tree-cutting will be required during detailed design stage. No trees, shrubs, or groundcover may be removed or vegetation stripped without the prior permission of the environment management specialist. If during detailed design cutting of trees will be required, compensatory plantation for trees lost at a rate of 2 trees for every tree cut, in addition to tree plantation as specified in the design, will be implemented by the contractor, who will also maintain the saplings for the duration of his contract. All efforts shall be made to preserve trees by evaluation of minor design adjustments/ alternatives (as applicable) to save trees. Special attention shall be given for protecting giant trees and locally-important trees (with religious importance) during implementation. Prevent workers or any other person from 	Construction Contractor	<ul style="list-style-type: none"> PMO and PIU to report in writing the number of trees cut and planted if tree-cutting will be required (to be determined during detailed design stage) Number of complaints from sensitive receptors on disturbance of vegetation, poaching, fishing, etc. 	<ul style="list-style-type: none"> Visual inspection by PIU and supervision consultants on monthly basis Frequency and sampling sites to be finalized during detailed design stage and final location of) subproject components 	<ul style="list-style-type: none"> Cost for implementation of mitigation measures responsibility of contractor.

Field	Impacts	Mitigation Measures	Responsible for Implementation	Monitoring Indicator	Frequency of Monitoring	Cost and Source of Funds
		removing and damaging any flora (plant/vegetation) and fauna (animal) including fishing in any water body in the subproject vicinity. <ul style="list-style-type: none"> Prohibit employees from poaching wildlife and cutting of trees for firewood. 				
C. Socioeconomic Characteristics						
Existing provisions for pedestrians and other forms of transport	Road closure is not anticipated. Hauling of construction materials and operation of equipment on-site can cause traffic problems. However, the proposed subproject will follow existing ROW alignment. The impacts are negative but short-term, site-specific within a relatively small area and reversible by mitigation measures.	<ul style="list-style-type: none"> Prepare and implement a Traffic Management Plan (see Appendix 12 for sample) Plan transportation routes so that heavy vehicles do not use narrow local roads, except in the immediate vicinity of delivery sites. Maintain safe passage for vehicles and pedestrians throughout the construction period. Schedule truck deliveries of construction materials during periods of low traffic volume. Erect and maintain barricades, including signs, markings, flags and flagmen informing diversions and alternative routes when required. Notify affected sensitive receptors by providing sign boards informing nature and duration of construction activities and contact numbers for 	Construction Contractor	<ul style="list-style-type: none"> Traffic route during construction works including number of permanent signages, barricades and flagmen on worksite as per Traffic Management Plan (see Appendix 4 for sample); Number of complaints from sensitive receptors; Number of signages placed at project location Number of walkways, signages, and metal sheets placed at project location 	<ul style="list-style-type: none"> Visual inspection by PIU and supervision consultants on monthly basis Frequency and sampling sites to be finalized during detailed design stage and final location of) subproject components 	<ul style="list-style-type: none"> Cost for implementation of mitigation measures responsibility of contractor.

Field	Impacts	Mitigation Measures	Responsible for Implementation	Monitoring Indicator	Frequency of Monitoring	Cost and Source of Funds
		<p>concerns/complaints.</p> <ul style="list-style-type: none"> • Leave spaces for access between mounds of soil. • Provide walkways and metal sheets where required to maintain access across for people and vehicles. • Increase workforce in front of critical areas such as institutions, place of worship, business establishment, hospitals, and schools. • Consult businesses and institutions regarding operating hours and factoring this in work schedules. Ensure there is provision of alternate access to businesses and institutions during construction activities, so that there is no closure of these shops or any loss of clientage. • Ensure any damage to properties and utilities will be restored or compensated to pre-work conditions. 				
Socio-economic status	Subproject components will be located in government land and existing ROWs thus there is no requirement for land acquisition	<ul style="list-style-type: none"> • Employ at least 50% of labor force from communities in the vicinity of the site. This will have the added benefit of avoiding social problems that sometimes occur when workers are imported into 	Construction Contractor	<ul style="list-style-type: none"> • Employment records; • Records of sources of materials • Records of compliance to Bangladesh Labor Law of 2006 and other 	<ul style="list-style-type: none"> • Visual inspection by PIU and supervision consultants on monthly basis • Frequency and sampling sites to be finalized during detailed 	<ul style="list-style-type: none"> • Cost for implementation of mitigation measures responsibility of contractor.

Field	Impacts	Mitigation Measures	Responsible for Implementation	Monitoring Indicator	Frequency of Monitoring	Cost and Source of Funds
	or any resettlements. Manpower will be required during the XXX-months construction stage. This can result to generation of contractual employment and increase in local revenue. Thus potential impact is positive and long-term.	host communities, and avoiding environmental and social problems from workers housed in poorly serviced camp accommodation. <ul style="list-style-type: none"> Secure construction materials from local market. 		applicable standards	design stage and final location of) subproject components	
Other existing amenities for community welfare	Although construction of subproject components involves quite simple techniques of civil work, the invasive nature of excavation and the subproject sites being in built-up areas of Muktagacha pourashava where there are a variety of human activities, will result to impacts to the sensitive	<ul style="list-style-type: none"> Provide safety signage at all sites visible to public Provide safety barriers near any trenches, and cover trenches with planks during non-work hours. Obtain details from <i>pourashava</i> nature and location of all existing infrastructure, and plan excavation carefully to avoid any such sites to maximum extent possible; Integrate construction of the various infrastructure subprojects to be conducted in Muktagacha (roads, water supply, etc.) so that different infrastructure is located on opposite sides of the road where feasible and roads and inhabitants are not subjected to repeated 	Construction Contractor	<ul style="list-style-type: none"> Utilities Contingency Plan Number of complaints from sensitive receptors 	<ul style="list-style-type: none"> Visual inspection by PIU and supervision consultants on monthly basis Frequency and sampling sites to be finalized during detailed design stage and final location of) subproject components 	<ul style="list-style-type: none"> Cost for implementation of mitigation measures responsibility of contractor.

Field	Impacts	Mitigation Measures	Responsible for Implementation	Monitoring Indicator	Frequency of Monitoring	Cost and Source of Funds
	receptors such as residents, businesses, and the community in general. Excavation may also damage existing infrastructure (such as water distribution pipes, electricity pylons, etc) located alongside the roads. The impacts are negative but short-term, site-specific within a relatively small area and reversible by mitigation measures.	<p>disturbance by construction in the same area at different times for different purposes.</p> <ul style="list-style-type: none"> • Consult with local community to inform them of the nature, duration and likely effects of the construction work, and to identify any local concerns so that these can be addressed. • Existing infrastructure (such as water distribution pipes, electricity pylons, etc.) shall be relocated before construction starts at the subproject sites. • Prior permission shall be obtained from respective local authority for use of water for construction. Use of water for construction works shall not disturb local water users. • If construction work is expected to disrupt users of community water bodies, notice to the affected community shall be served 7 days in advance and again 1 day prior to start of construction. • Ensure any damage to properties and utilities will be restored or compensated to pre-work conditions. 				
Community health and safety	Construction works will impede the access of residents and	<ul style="list-style-type: none"> • Provide safety signage at all sites visible to public • Provide safety 	Construction Contractor	<ul style="list-style-type: none"> • Number of permanent signages, barricades and flagmen on worksite as per 	<ul style="list-style-type: none"> • Visual inspection by PIU and supervision consultants on monthly basis 	<ul style="list-style-type: none"> • Cost for implementation of mitigation

Field	Impacts	Mitigation Measures	Responsible for Implementation	Monitoring Indicator	Frequency of Monitoring	Cost and Source of Funds
	businesses in limited cases. The impacts are negative but short-term, site-specific within a relatively small area and reversible by mitigation measures. Poor safety signage and lack of barriers at work site and trenches will create hazard to pedestrians and children.	<p>barriers near any trenches, and cover trenches with planks during non-work hours.</p> <ul style="list-style-type: none"> Contractor's activities and movement of staff will be restricted to designated construction areas. Locations of hot-mix plants, batching plants and crushers (if these establishments are being set up exclusively for the subproject) shall be located at least 100 m away from the nearest dwelling preferably in the downwind direction. Consult with Muktagacha local authority on the designated areas for stockpiling of, soils, gravel, and other construction materials. If the contractor chooses to locate the work camp/storage area on private land, he must get prior permission from the environment management specialist and landowner. Use small mechanical excavators to attain faster trenching progress. For rock and concrete breaking, use non-explosive blasting chemicals, silent rock cracking chemicals, and concrete breaking 		<p>Traffic Management Plan (see Appendix 4 for sample);</p> <ul style="list-style-type: none"> Number of complaints from sensitive receptors; Number of walkways, signages, and metal sheets placed at project location Agreement between landowner and contractors in case of using private lands as work camps, storage areas, etc. 	<ul style="list-style-type: none"> Frequency and sampling sites to be finalized during detailed design stage and final location of) subproject components 	measures responsibility of contractor.

Field	Impacts	Mitigation Measures	Responsible for Implementation	Monitoring Indicator	Frequency of Monitoring	Cost and Source of Funds
		<p>chemicals.¹²</p> <ul style="list-style-type: none"> • Under no circumstances may open areas or the surrounding bushes be used as a toilet facility. • Recycling and the provision of separate waste receptacles for different types of waste shall be encouraged. • A general regard for the social and ecological well-being of the site and adjacent areas is expected of the site staff. Workers need to be made aware of the following general rules: (i) no alcohol/drugs on site; (ii) prevent excessive noise; (iii) construction staff are to make use of the facilities provided for them, as opposed to ad hoc alternatives (e.g. fires for cooking, the use of surrounding bushes as a toilet facility); (iv) no fires permitted on site except if needed for the construction works; (v) trespassing on private/commercial properties adjoining the site is forbidden; (vi) other than pre-approved security staff, no workers shall be 				

¹² These products come in powder forms, and once mixed with water (being the catalyst) simply expand, and crack the rock from hole to hole. This product is environmentally friendly and can be washed away after it has been used.

Field	Impacts	Mitigation Measures	Responsible for Implementation	Monitoring Indicator	Frequency of Monitoring	Cost and Source of Funds
		<p>permitted to live on the construction site; and (vii) no worker may be forced to do work that is potentially dangerous or that he/she is not trained to do.</p> <ul style="list-style-type: none"> Interested and affected parties need to be made aware of the existence of the complaints book and the methods of communication available to them. The contractor must address queries and complaints by: (i) documenting details of such communications; (ii) submitting these for inclusion in complaints register; (iii) bringing issues to the national/regional environmental specialist's attention immediately; and (iv) taking remedial action as per national/regional environment specialist's instruction. The contractor shall immediately take the necessary remedial action on any complaint/grievance received by him and forward the details of the grievance along with the action taken to the national/regional environmental specialist within 48 hours of receipt of such complaint/grievance. 				
Workers health and safety	There is invariably a safety risk	<ul style="list-style-type: none"> Comply with requirements of Government of Bangladesh 	Construction Contractor	<ul style="list-style-type: none"> Site-specific H&S Plan Equipped first- 	<ul style="list-style-type: none"> Visual inspection by PIU and supervision consultants 	<ul style="list-style-type: none"> Cost for implementation

Field	Impacts	Mitigation Measures	Responsible for Implementation	Monitoring Indicator	Frequency of Monitoring	Cost and Source of Funds
	when construction works such as excavation and earthmoving are conducted in urban areas. Workers need to be mindful of the occupational hazards which can arise from working in height and excavation works. Potential impacts are negative and long-term but reversible by mitigation measures.	Labor Law of 2006 and all applicable laws and standards on workers H&S. <ul style="list-style-type: none"> Ensure that all site personnel have a basic level of environmental awareness training. If necessary, the environmental management specialist and/or a translator shall be called to the sites to further explain aspects of environmental or social behavior that are unclear. Produce and implement a site health and safety (H&S) plan which include measures as: (i) excluding the public from worksites; (ii) ensuring all workers are provided with and required to use personal protective equipment (reflectorized vests, footwear, gloves, goggles and masks) at all times; (iii) providing (H&S) training¹³ for all site personnel; (iv) documenting procedures to be followed for all site activities; and (v) maintaining accident reports 		aid stations <ul style="list-style-type: none"> Medical insurance coverage for workers Number of accidents Records of supply of uncontaminated water Condition of eating areas of workers Record of H&S orientation trainings Use of personal protective equipment % of moving equipment outfitted with audible back-up alarms Permanent sign boards for hazardous areas Signages for storage and disposal areas Condition of sanitation facilities for workers 	on monthly basis <ul style="list-style-type: none"> Frequency and sampling sites to be finalized during detailed design stage and final location of) subproject components 	of mitigation measures responsibility of contractor.

¹³ Some of the key areas that may be covered during training as they relate to the primary causes of accidents include (i) slips, trips and falls; (ii) personal protective equipment; (iii) ergonomics, repetitive motion, and manual handling; (iv) workplace transport; and (v) legislation and responsibilities. Training can provide the foundations of competence but it does not necessarily result in a competent worker. Therefore, it is essential to assess staff competence to ensure that the training provided is relevant and effective. Supervision and monitoring arrangements shall be in place to ensure that training has been effective and the worker is competent at their job. The level of supervision and monitoring required is a management decision that shall be based on the risks associated with the job, the level of competence required, the experience of the individual and whether the worker works as part of a team or is a lone worker.

Field	Impacts	Mitigation Measures	Responsible for Implementation	Monitoring Indicator	Frequency of Monitoring	Cost and Source of Funds
		<p>and records.</p> <ul style="list-style-type: none"> • Arrange for readily available first aid unit including an adequate supply of sterilized dressing materials and appliances • Maintain necessary living accommodation and ancillary facilities in functional and hygienic manner in work camps. Ensure (i) uncontaminated water for drinking, cooking and washing, (ii) clean eating areas where workers are not exposed to hazardous or noxious substances; and (iii) sanitation facilities are available at all times. • Provide medical insurance coverage for workers; • Provide H&S orientation training to all new workers to ensure that they are apprised of the basic site rules of work at the site, personal protective protection, and preventing injuring to fellow workers; • Provide visitor orientation if visitors to the site can gain access to areas where hazardous conditions or substances may be present. Ensure also that visitor/s do not enter hazard areas unescorted; 				

Field	Impacts	Mitigation Measures	Responsible for Implementation	Monitoring Indicator	Frequency of Monitoring	Cost and Source of Funds
		<ul style="list-style-type: none"> • Ensure the visibility of workers through their use of high visibility vests when working in or walking through heavy equipment operating areas; • Ensure moving equipment is outfitted with audible back-up alarms; • Mark and provide sign boards for hazardous areas such as energized electrical devices and lines, service rooms housing high voltage equipment, and areas for storage and disposal. Signage shall be in accordance with international standards and be well known to, and easily understood by workers, visitors, and the general public as appropriate; and • Disallow worker exposure to noise level greater than 85 dBA for a duration of more than 8 hours per day without hearing protection. The use of hearing protection shall be enforced actively. 				
D. Historical, Cultural, and Archaeological Characteristics						
Physical and cultural heritage	Construction works will be on existing roads and in built-up areas of Muktagacha thus risk for chance finds is low.	<ul style="list-style-type: none"> • All fossils, coins, articles of value of antiquity, structures and other remains of archaeological interest discovered on the site shall be the property of the government. 	Construction Contractor	<ul style="list-style-type: none"> • Records of chance finds 	<ul style="list-style-type: none"> • Visual inspection by PIU and supervision consultants on monthly basis • Frequency and sampling sites to be finalized during 	<ul style="list-style-type: none"> • Cost for implementation of mitigation measures responsibility of contractor.

Field	Impacts	Mitigation Measures	Responsible for Implementation	Monitoring Indicator	Frequency of Monitoring	Cost and Source of Funds
		<ul style="list-style-type: none"> Prevent workers or any other persons from removing and damaging any fossils, coins, articles of value of antiquity, structures and other remains of archaeological interest. Stop work immediately to allow further investigation if any finds are suspected. 			detailed design stage and final location of) subproject components	
E. Others						
Submission of EMP implementation report	Unsatisfactory compliance to EMP	<ul style="list-style-type: none"> Appointment of supervisor to ensure EMP implementation Timely submission of monitoring reports including pictures 	Construction contractor	<ul style="list-style-type: none"> Availability and competency of appointed supervisor Monthly report 	<ul style="list-style-type: none"> Monthly monitoring report to be submitted by PIU to PMO PMO to submit semi-annual monitoring report to ADB 	<ul style="list-style-type: none"> Cost for implementation of mitigation measures responsibility of contractor.
3. Post-construction Activities						
Post-construction clean-up	Damage due to debris, spoils, excess construction materials	<ul style="list-style-type: none"> Remove all spoils wreckage, rubbish, or temporary structures (such as buildings, shelters, and latrines) which are no longer required; and All excavated roads shall be reinstated to original condition. All disrupted utilities restored All affected structures rehabilitated/compensated The area that previously housed the construction camp is to be checked for spills of substances such as oil, 	Construction Contractor	<ul style="list-style-type: none"> PMO report in writing that (i) worksite is restored to original conditions; (ii) camp has been vacated and restored to pre-project conditions; (iii) all construction related structures not relevant to O&M are removed; and (iv) worksite clean-up is satisfactory. 	<ul style="list-style-type: none"> Prior to turn-over of completed works to <i>pourashava</i> 	<ul style="list-style-type: none"> Cost for implementation of mitigation measures responsibility of contractor.

Field	Impacts	Mitigation Measures	Responsible for Implementation	Monitoring Indicator	Frequency of Monitoring	Cost and Source of Funds
		<p>paint, etc. and these shall be cleaned up.</p> <ul style="list-style-type: none"> • All hardened surfaces within the construction camp area shall be ripped, all imported materials removed, and the area shall be topsoiled and regrassed using the guidelines set out in the revegetation specification that forms part of this document. • The contractor must arrange the cancellation of all temporary services. • Request PMO/CSS to report in writing that worksites and camps have been vacated and restored to pre-project conditions before acceptance of work. 				

Table 12: Environmental Management and Monitoring Plan–O&M Phase

Field	Impacts	Mitigation Measures	Responsible for Implementation	Monitoring Indicator	Frequency of Monitoring	Cost and Source of Funds
Post-construction clean-up	Damage due to debris, spoils, excess construction materials	<ul style="list-style-type: none"> • Remove all spoils wreckage, rubbish, or temporary structures (such as buildings, shelters, and latrines) which are no longer required; and • All excavated roads shall be reinstated to original condition. • All disrupted utilities restored • All affected structures rehabilitated/compensated • The area that previously housed 	Construction Contractor	<ul style="list-style-type: none"> • PMO/MDSC report in writing that (i) worksite is restored to original conditions; (ii) camp has been vacated and restored to pre-project conditions; (iii) 	<ul style="list-style-type: none"> • Prior to turn-over of completed works to pourashava 	<ul style="list-style-type: none"> • Cost for implementation of mitigation measures responsibility of contractor.

Field	Impacts	Mitigation Measures	Responsible for Implementation	Monitoring Indicator	Frequency of Monitoring	Cost and Source of Funds
		<p>the construction camp is to be checked for spills of substances such as oil, paint, etc. and these shall be cleaned up.</p> <ul style="list-style-type: none"> • All hardened surfaces within the construction camp area shall be ripped, all imported materials removed, and the area shall be topsoiled and regrassed using the guidelines set out in the revegetation specification that forms part of this document. • The contractor must arrange the cancellation of all temporary services. • Request PMO/CSS to report in writing that worksites and camps have been vacated and restored to pre-project conditions before acceptance of work. 		all construction related structures not relevant to O&M are removed; and (iv) worksite clean-up is satisfactory.		

Table 13: Environmental Management and Monitoring Plan–O&M Phase

Field	Impacts	Mitigation Measures	Responsible for Implementation	Monitoring Indicator	Frequency of Monitoring	Cost and Source of Funds
A. Physical Characteristics						
Water quality	Run-off from stockpiled debris/sediments from drainages which may cause siltation and reduction in the quality of adjacent bodies of water. The impacts are negative but short-term, site-specific within a relatively small area and reversible by mitigation measures.	<ul style="list-style-type: none"> • Take all precautions to prevent entering of run-off into streams, watercourses, or irrigation system. Install temporary silt traps or sedimentation basins along the drainage leading to the water bodies. • Remove all debris/sediments immediately. • Dispose debris/sediments at a designated site such as landfill. It is important that the designated 	<ul style="list-style-type: none"> • Muktagacha <i>pourashava</i> 	<ul style="list-style-type: none"> • No visible degradation to nearby drainages, <i>khals</i> or water bodies due to construction activities 	<ul style="list-style-type: none"> • Duration of repair works 	<ul style="list-style-type: none"> • Included in O&M cost

Field	Impacts	Mitigation Measures	Responsible for Implementation	Monitoring Indicator	Frequency of Monitoring	Cost and Source of Funds
		disposal site's base is of a non-permeable membrane in order to prevent leachate that can contaminate the soil and groundwater.				
Air quality	Moving debris/sediments from drainages may create dusts during dry season. The impacts are negative but short-term, site-specific within a relatively small area and reversible by mitigation measures.	<ul style="list-style-type: none"> • Use tarpaulins to cover soils, sand and other loose material. 	<ul style="list-style-type: none"> • Muktagacha pourashava 	<ul style="list-style-type: none"> • No complaints from sensitive receptors 	<ul style="list-style-type: none"> • Duration of repair works 	<ul style="list-style-type: none"> • Included in O&M cost
Acoustic environment	Temporary increase in noise level and vibrations. The impacts are negative but short-term, site-specific within a relatively small area and reversible by mitigation measures.	<ul style="list-style-type: none"> • Plan activities in consultation with Muktagacha local authority so that activities with the greatest potential to generate noise are conducted during periods of the day which will result in least disturbance. • Identify any buildings at risk from vibration damage and avoiding any use of pneumatic drills or heavy vehicles in the vicinity. Complete work in these areas quickly. 	<ul style="list-style-type: none"> • Muktagacha pourashava 	<ul style="list-style-type: none"> • No complaints from sensitive receptors 	<ul style="list-style-type: none"> • Duration of repair works 	<ul style="list-style-type: none"> • Included in O&M cost
B. Biological Characteristics						
Biodiversity	Activities in the built-up area of Muktagachapourashava. There are no protected areas in or around subproject sites, and no known areas of ecological interest.	<ul style="list-style-type: none"> • No trees, shrubs, or groundcover may be removed or vegetation stripped without the prior permission. • Prevent workers or any other person from removing and damaging any flora (plant/vegetation) and fauna (animal). 	<ul style="list-style-type: none"> • Muktagacha pourashava 	<ul style="list-style-type: none"> • No complaints from sensitive receptors 	<ul style="list-style-type: none"> • Duration of repair works 	<ul style="list-style-type: none"> • Included in O&M cost
C. Socioeconomic Characteristics						
Existing provisions for	Road closure is not anticipated. Traffic may	<ul style="list-style-type: none"> • Maintain safe passage for vehicles and pedestrians during 	<ul style="list-style-type: none"> • Muktagacha pourashava 	<ul style="list-style-type: none"> • No complaints from sensitive 	<ul style="list-style-type: none"> • Duration of repair works 	<ul style="list-style-type: none"> • Included in O&M cost

Field	Impacts	Mitigation Measures	Responsible for Implementation	Monitoring Indicator	Frequency of Monitoring	Cost and Source of Funds
pedestrians and other forms of transport	be interrupted temporarily. The impacts are negative but short-term, site-specific within a relatively small area and reversible by mitigation measures.	<p>maintenance activities.</p> <ul style="list-style-type: none"> • Erect and maintain barricades, including signs, markings, flags and flagmen informing diversions and alternative routes when required. • Notify affected sensitive receptors by providing sign boards informing nature and duration of maintenance activities and contact numbers for concerns/complaints. • Leave spaces for access between mounds of soil. • Provide walkways and metal sheets where required to maintain access across for people and vehicles. • Increase workforce in front of critical areas such as institutions, place of worship, business establishment, hospitals, and schools. • Consult businesses and institutions regarding operating hours and factoring this in work schedules. • Ensure any damage to properties and utilities will be restored or compensated to pre-work conditions. 		receptors		
Workers health and safety	Workers need to be mindful of the occupational hazards working in confined spaces such as closed drains. Potential impacts are negative and long-term but reversible by mitigation measures.	<ul style="list-style-type: none"> • Comply with requirements of Government of Bangladesh Labor Law of 2006 and all applicable laws and standards on workers H&S. • Ensure that all site personnel have a basic level of H&S training. • Produce and implement a O&M 	<ul style="list-style-type: none"> • Muktagacha <i>pourashava</i> 	<ul style="list-style-type: none"> • No complaints from sensitive receptors • No complaints from workers related to O&M activities • Zero accident 	<ul style="list-style-type: none"> • Duration of repair works 	<ul style="list-style-type: none"> • Included in O&M cost

Field	Impacts	Mitigation Measures	Responsible for Implementation	Monitoring Indicator	Frequency of Monitoring	Cost and Source of Funds
		<p>health and safety (H&S) plan which include measures as: (i) excluding the public from worksites; (ii) ensuring all workers are provided with and required to use personal protective equipment (reflectorized vests, footwear, gloves, goggles and masks) at all times; (iii) providing (H&S) training¹⁴ for all site personnel; (iv) documenting procedures to be followed for all site activities; and (v) maintaining accident reports and records.</p> <ul style="list-style-type: none"> • Arrange for readily available first aid unit including an adequate supply of sterilized dressing materials and appliances • Provide H&S orientation training to all new workers to ensure that they are apprised of the basic site rules of work at the site, personal protective protection, and preventing injuring to fellow workers; • Ensure the visibility of workers through their use of high visibility vests when working in or walking through heavy equipment operating areas; • Mark and provide sign boards. Signage shall be in accordance 				

¹⁴ Some of the key areas that may be covered during training as they relate to the primary causes of accidents include (i) slips, trips and falls; (ii) personal protective equipment; (iii) ergonomics, repetitive motion, and manual handling; (iv) workplace transport; and (v) legislation and responsibilities. Training can provide the foundations of competence but it does not necessarily result in a competent worker. Therefore, it is essential to assess staff competence to ensure that the training provided is relevant and effective. Supervision and monitoring arrangements shall be in place to ensure that training has been effective and the worker is competent at their job. The level of supervision and monitoring required is a management decision that shall be based on the risks associated with the job, the level of competence required, the experience of the individual and whether the worker works as part of a team or is a lone worker.

Field	Impacts	Mitigation Measures	Responsible for Implementation	Monitoring Indicator	Frequency of Monitoring	Cost and Source of Funds
		<p>with international standards and be well known to, and easily understood by workers, visitors, and the general public as appropriate.</p> <ul style="list-style-type: none"> • Disallow worker exposure to noise level greater than 85 dBA for a duration of more than 8 hours per day without hearing protection. The use of hearing protection shall be enforced actively. 				
D. Historical, Cultural, and Archaeological Characteristics						
Physical and cultural heritage	Construction works will be on existing drainages and built-up areas of Muktagacha thus risk for chance finds is low.	<ul style="list-style-type: none"> • All fossils, coins, articles of value of antiquity, structures and other remains of archaeological interest discovered on the site shall be the property of the government. • Prevent workers or any other persons from removing and damaging any fossils, coins, articles of value of antiquity, structures and other remains of archaeological interest. • Stop work immediately to allow further investigation if any finds are suspected. 	<ul style="list-style-type: none"> • Muktagacha <i>pourashava</i> 	<ul style="list-style-type: none"> • Records of chance finds 	<ul style="list-style-type: none"> • Duration of repair works 	<ul style="list-style-type: none"> • Included in O&M cost

C. Institutional Capacity Development Program

114. The MDSC national and regional environmental specialists will be responsible for trainings on environmental awareness and management in accordance with both ADB and government requirements. Specific modules customized for the available skill set will be devised after assessing the capabilities of the target participants and the requirements of the project. Typical modules would be as follows: (i) sensitization; (ii) introduction to environment and environmental considerations in water supply and wastewater projects; (iii) review of IEEs and integration into the project detailed design; (iv) improved coordination within nodal departments; and (v) monitoring and reporting system. The contractors will be required to conduct environmental awareness and orientation of workers prior to deployment to work sites. The proposed training project along with the frequency of sessions is presented in Table 30.

Table 14: Training Program for Environmental Management

Items	Pre-construction/prior to construction	Construction	
Training Title	Orientation workshop	Orientation program/ workshop for contractors and supervisory staffs	Experiences and best practices sharing
Purpose	To aware the participants of the environmental safeguard requirements of ADB and GOB and how the project will meet these requirements	To build the capacity of the staffs for effective implementation of the designed EMPs aimed at meeting the environmental safeguard compliance of ADB and GOB	To share the experiences and best practices aimed at learning lessons and improving implementation of EMP
Contents	Module 1: Orientation <ul style="list-style-type: none"> • ADB Safeguards Policy Statement • Government of Bangladesh Environmental Laws and Regulations Module 2: Environmental Assessment Process <ul style="list-style-type: none"> • ADB environmental process, identification of impacts and mitigation measures, formulation of an environmental management plan (EMP), implementation, and monitoring requirements • Review of environmental assessment report to comply with ADB requirements • Incorporation of EMP into the project design and contracts 	<ul style="list-style-type: none"> • Roles and responsibilities of officials/contractors/consultants towards protection of environment • Environmental issues during construction • Implementation of EMP • Monitoring of EMP implementation • Reporting requirements 	Experiences on EMP implementation – issues and challenges Best practices followed
Duration	1 day	1 day	1 day on a regular period to be determined by PMO,

Items	Pre-construction/prior to construction	Construction	
			PIUs, and PMSC
Participants	LGED, DPHE, PMO, and PMO staffs (technical and environmental) involved in the project implementation	PMO PIUs Contractors	PMO PIUs Contractors

D. Staffing Requirement and Budget

115. Costs required for implementing the EMP will cover the following activities:

- (i) Updating IEE, preparing and submitting reports and public consultation and disclosure;
- (ii) Application for environmental clearances; and
- (iii) Implementation of EMP, environmental monitoring program and long-term surveys.

116. The infrastructure involved in each scheme is generally straightforward and will take between three and nine months to build. Environmental monitoring during construction will also be straightforward and will involve periodic site observations and interviews with workers and others, plus checks of reports and other documents. This will be conducted by MDSC environmental management specialist assisted by the PMO environment officer. The environmental management specialist will use the IEE as necessary and perform tasks as specified in the TOR. Therefore no separate budget required for MDSC environment management specialist.

117. The cost of mitigation measures and surveys during construction stage will be incorporated into the contractor's costs, which will be binding on him for implementation. The surveys will be conducted by the contractors.

118. The operation phase mitigation measures are again of good operating practices, which will be the responsibility of Muktagacha *pourashava*. All monitoring during the operation and maintenance phase will be conducted by LGED and DPHE, therefore, there are no additional costs.

119. The indicative costs to implement the EMP are shown in Tables 31 and 32 (by source of funds).

Table 15: Indicative Cost of EMP Implementation

	Particulars	Stages	Unit	Total Number	Rate (Taka)	Cost (Taka)	Cost covered by
A	Mitigation Measures						
1	Compensatory plantation measures	Construction	Per tree	50	1,500	75,000	Civil works contract
B	Monitoring Measures						
1	Air quality monitoring	- Pre-construction - Construction	Per location	20	30,000	60,000	Civil works contract
2	Noise levels	- Pre-	Per	20	10,000	200,000	Civil works

	Particulars	Stages	Unit	Total Number	Rate (Taka)	Cost (Taka)	Cost covered by
.	monitoring	construction - Construction	location				contract
C	Capacity Building						
1	(i) Orientation workshop for officials involved in the project implementation on ADB Safeguards Policy Statement, Government of Bangladesh environmental laws and regulations, and environmental assessment process; (ii) induction course contractors, preparing them on EMP implementation and environmental monitoring requirements related to mitigation measures; and taking immediate action to remedy unexpected adverse impacts or ineffective mitigation measures found during the course of implementation; and (iii) lessons learned information sharing	Module 1 – immediately upon engagement of the MDSC environmental specialists Module 2 – prior to award of civil works contracts (twice a year for 4 years) Module 3 – prior to start of Phase 2 and upon completion of the project	lump sum		Module 1 – 30,000 Module 2 – 30,000 Module 3 – 30,000	90,000	Covered under MDSC contract
D	Consultants Costs						
1	MDSC national environmental specialist (1 person)	Responsible for environmental safeguards of the project	person months (spread over entire project implementation period)	60 person months	320,000 per person month	1,280,000	Remuneration and budget for travel covered in the MDSC contract
2	MDSC regional environmental specialists (3 persons)	Responsible for environmental safeguards of	person months (spread over	60 each = 180 person-months	320,000 per person-month	57,600,000	Remuneration and budget for travel

	Particulars	Stages	Unit	Total Number	Rate (Taka)	Cost (Taka)	Cost covered by
		the project	entire project implementation period)				covered in the MDSC contract
E	Administrative Costs						
1	Legislation, permits, and agreements	Permit for excavation, tree-cutting permits, etc	Lump sum		50,000	50,000	These consents are to be obtained by contractor at his own expense.
		Environmental assessment and environmental clearances as per ECA and ECR requirements Obtaining right of way clearances with related national agencies.	Lump sum		100,000	100,000	LGED DPD cost for municipal infrastructures
F	Other Costs						
1	Public consultations and information disclosure	Information disclosure and consultations during preconstruction and construction phase, including public awareness campaign through media	As per requirement	Lump sum		1,000,000	Covered under MDSC contract
2	GRM implementation	Costs involved in resolving complaints (meetings, consultations, communication, and reporting/information		Lump sum		1,000,000	PMO cost

	Particulars	Stages	Unit	Total Number	Rate (Taka)	Cost (Taka)	Cost covered by
		dissemination)					
3	Any unanticipated impact due to project implementation	Mitigation of any unanticipated impact arising during construction phase and defect liability period		Lump sum	Contractor's liability	As per insurance requirement	Civil works contract – contractor's insurance

Table 16: Indicative Cost of EMP Implementation–Per Source of Funding

	Particulars	Stages	Unit	Total Number	Rate (Taka)	Cost (Taka)	Cost covered by
A. Contractors							
1	Compensatory plantation measures	Construction	Per tree	50	1,500	75,000	Civil works contract
2	Air quality monitoring	- Pre-construction - Construction	Per location	20	30,000	60,000	Civil works contract
3	Noise levels monitoring	- Pre-construction - Construction	Per location	20	10,000	200,000	Civil works contract
4	Legislation, permits, and agreements	Permit for excavation, tree-cutting permits, etc	Lump sum		50,000	50,000	These consents are to be obtained by contractor at his own expense.
5	Any unanticipated impact due to project implementation	Mitigation of any unanticipated impact arising during construction phase and defect liability period		Lump sum	Contractor's liability	As per insurance requirement	Civil works contract – contractor's insurance
	Subtotal					720,000	US\$9,000
B. MDSC							
1	Public consultations and information disclosure	Information disclosure and consultations during preconstruction and construction phase, including public awareness	As per requirement	Lump sum		1,000,000	Covered under MDSC contract

	Particulars	Stages	Unit	Total Number	Rate (Taka)	Cost (Taka)	Cost covered by
		campaign through media					
2 .	(i) Orientation workshop for officials involved in the project implementation on ADB Safeguards Policy Statement, Government of Bangladesh environmental laws and regulations, and environmental assessment process; (ii) induction course contractors, preparing them on EMP implementation and environmental monitoring requirements related to mitigation measures; and taking immediate action to remedy unexpected adverse impacts or ineffective mitigation measures found during the course of implementation; and (iii) lessons learned information sharing	<p>Module 1 – immediately upon engagement of the MDSC environmental specialists</p> <p>Module 2 – prior to award of civil works contracts (twice a year for 4 years)</p> <p>Module 3 – prior to start of Phase 2 and upon completion of the project</p>	lump sum		<p>Module 1 – 30,000</p> <p>Module 2 – 30,000</p> <p>Module 3 – 30,000</p>	90,000	Covered under MDSC contract
3 .	MDSC national environmental specialist (1 person)	Responsible for environmental safeguards of the project	person months (spread over entire project implementation period)	60 person months	320,000 per person month	1,280,000	Remuneration and budget for travel covered in the MDSC contract

	Particulars	Stages	Unit	Total Number	Rate (Taka)	Cost (Taka)	Cost covered by
4	MDSC regional environmental specialists (3 persons)	Responsible for environmental safeguards of the project	person months (spread over entire project implementation period)	60 each = 180 person-months	320,000 per person-month	57,600,000	Remuneration and budget for travel covered in the MDSC contract
	Subtotal					59,970,000	US\$749,625
C. Administrative Cost (Recurring) – PMO							
1	Legislation, permits, and agreements	Environmental assessment and environmental clearances as per ECA and ECR requirements Obtaining right of way clearances with related national agencies.	Lump sum		100,000	100,000	LGED DPD cost for municipal infrastructures
2	GRM implementation	Costs involved in resolving complaints (meetings, consultations, communication, and reporting/information dissemination)		Lump sum		1,000,000	PMO cost
	Subtotal					1,100,000	US\$13,750
	Total					61,790,000	US\$772,375

IX. MONITORING AND REPORTING

120. PMO will monitor and measure the progress of EMP implementation. The monitoring activities will correspond with the project's risks and impacts, and will be identified in the EIAs/IEEs for the projects. In addition to recording information on the work and deviation of work components from original scope PMO, PIUs, and MDSC will undertake site inspections and document review to verify compliance with the EMP and progress toward the final outcome. Corrective actions to be taken quickly and reported in monitoring reports.

121. MDSC will submit monthly monitoring and implementation reports to PMO, who will take follow-up actions, if necessary. PMO will submit semi-annual monitoring reports to ADB. The

suggested monitoring report format is in **Appendix 15**. Subproject budgets will reflect the costs of monitoring and reporting requirements. For projects likely to have significant adverse environmental impacts during operation, reporting will continue at the minimum on an annual basis. Monitoring reports will be posted in a location accessible to the public.

122. LGED and DPHE will document monitoring results, identify the necessary corrective actions, reflect them in a corrective action plan, and for each quarter, will study the compliance with the action plan developed in the previous quarter. Compliance with loan covenants will be screened by ADB.

123. ADB will review project performance against the commitments as agreed in the legal documents. The extent of ADB's monitoring and supervision activities will be commensurate with the project's risks and impacts. Monitoring and supervising of social and environmental safeguards will be integrated into the project performance management system. ADB will monitor projects on an ongoing basis until a project completion report is issued. ADB will carry out the following monitoring actions to supervise project implementation:

- (i) conduct periodic site visits for projects with adverse environmental or social impacts;
- (ii) conduct supervision missions with detailed review by ADB's safeguard specialists/officers or consultants for projects with significant adverse social or environmental impacts;
- (iii) review the periodic monitoring reports submitted by EAs to ensure that adverse impacts and risks are mitigated, as planned and as agreed with ADB;
- (iv) work with EAs to rectify to the extent possible any failures to comply with their safeguard commitments, as covenanted in the legal agreements, and exercise remedies to re-establish compliance as appropriate; and
- (v) prepare a project completion report that assesses whether the objective and desired outcomes of the safeguard plans have been achieved, taking into account the baseline conditions and the results of monitoring.

X. CONCLUSION AND RECOMMENDATIONS

124. The process described in this document has assessed the environmental impacts of all elements of Muktagacha drainage subproject. All potential impacts were identified in relation to design and location, construction, and operation phases.

125. Planning principles and design considerations have been reviewed and incorporated into the site planning process whenever possible; thus, environmental impacts as being due to the project design or location were not significant.

126. Most of the individual elements of the subproject are relatively small and involve straightforward construction and operation, so impacts will be mainly localized and not greatly significant. Most of the predicted impacts are associated with the construction process, and are produced because that process is invasive, involving trenching and other excavation. However, the routine nature of the impacts means that most can be easily mitigated. Mitigation measures have been developed to reduce all negative impacts to acceptable levels. Mitigation will be assured by a program of environmental monitoring to ensure that all measures are

implemented, and will determine whether the environment is protected as intended. It will include observations on- and off-site, document checks, and interviews with workers and beneficiaries. Any requirements for corrective action will be reported to the ADB.

127. The stakeholders were involved in developing the IEE through discussions on-site and public consultation, after which views expressed were incorporated into the IEE and in the planning and development of the subproject. The IEE will be made available at public locations in the city and will be disclosed to a wider audience via the ADB and LGED project websites. The consultation process will be continued and expanded during project implementation to ensure that stakeholders are fully engaged in the project and have the opportunity to participate in its development and implementation. A grievance redress mechanism is described within the IEE to ensure any public grievances are addressed quickly.

128. The PMO and MDSC will be responsible for monitoring. The MDSC will submit monthly monitoring reports to PMO, and the PMO will send semi-annual monitoring reports to ADB. ADB will post the environmental monitoring reports on its website.

129. The EMP will assist the PMO, MDSC, and contractors in mitigating the environmental impacts, and guide them in the environmentally sound execution of the proposed project. The EMP will also ensure efficient lines of communication between the implementing agency, project management unit, and contractors. A copy of the EMP shall be kept on-site during the construction period at all times. The EMP shall be made binding on all contractors operating on the site, and will be included in the contractual clauses. Non-compliance with, or any deviation from, the conditions set out in this document shall constitute a failure in compliance.

130. Therefore the proposed subproject is unlikely to cause significant adverse impacts and net environmental benefits to citizens of Muktagacha will be positive. The potential impacts that are associated with design, construction and operation can be mitigated to standard levels without difficulty through proper engineering design and the incorporation or application of recommended mitigation measures and procedures.

131. As per Government of Bangladesh Environment Conservation Act, 1995 (ECA, 1995) and Environment Conservation Rules (ECR, 1997), the subproject is categorized as “red” and Location Clearance Certificate (LCC) and Environmental Clearance Certificate (ECC) must be obtained from the DoE.

132. Based on the findings of the IEE, there are no significant impacts and the classification of the subproject as Category “B” is confirmed. No further special study or detailed environmental impact assessment (EIA) needs to be undertaken to comply with ADB SPS (2009).

Appendix 1: Rapid Environmental Assessment Checklist

Screening questions	Yes	No	Remarks
A. Project siting Is the project area adjacent to or within any of the following environmentally sensitive areas?	✓		Muktagacha <i>pourashava</i> covers an area of 11.97 km ² with population density of 4170 persons per km ² . The area is predominantly residential.
Cultural heritage site		✓	
Protected area		✓	
Wetland		✓	
Mangrove		✓	
Estuarine		✓	
Buffer zone of protected area		✓	
Special area for protecting biodiversity		✓	
B. Potential environmental impacts Will the project cause...		✓	
Encroachment on historical/cultural areas; disfiguration of landscape by road embankments, cuts, fills, and quarries?		✓	Not applicable. Construction works will be on existing ROW of earthen drains in built-up areas of Muktagacha.
Encroachment on precious ecology (e.g. sensitive or protected areas)?		✓	Not applicable. There are no protected areas in or around subproject sites, and no known areas of ecological interest in Muktagacha.
Alteration of surface water hydrology of waterways crossed by roads, resulting in increased sediment in streams affected by increased soil erosion at construction site?	✓		Excavations may result to silt-laden runoff during rainfall which may cause siltation and reduction in the quality of adjacent bodies of water. The impacts are negative but short-term, site-specific within a relatively small area and reversible by mitigation measures.
Deterioration of surface water quality due to silt runoff and sanitary wastes from worker-based camps and chemicals used in construction?	✓		Due to excavation, run-off from stockpiled materials, and chemical contamination from fuels and lubricants. The impacts are negative but short-term, site-specific within a relatively small area and reversible by mitigation measures.
Increased local air pollution due to rock crushing, cutting and filling works, and chemicals from asphalt processing?	✓		Conducting works at dry season and moving large quantity of materials may create dusts and increase in concentration of vehicle-related pollutants. The impacts are negative but short-term, site-specific within a relatively small area and reversible by mitigation measures.
Risks and vulnerabilities related to occupational health and safety due to physical, chemical, biological, and radiological hazards during project construction and operation during project construction and operation?		✓	Not applicable. Construction will not involve use explosives and chemicals. Excavation will be done manually. Construction contractors will be required to implement health and safety (H&S) plan.
Noise and vibration due to blasting and other civil works?	✓		Temporary increase in noise level and vibrations may be caused by excavation equipment, and the transportation of equipment, materials, and people. The impacts are negative but short-term, site-specific within a relatively small area and reversible by mitigation measures.
Dislocation or involuntary resettlement of people?		✓	Not applicable. Land acquisition and resettlement are not required for the subproject.
Dislocation and compulsory resettlement of people living in right-of-way?		✓	Not applicable. There are no encroachers or residential/commercial structures in the ROWs
Disproportionate impacts on the poor, women and children, indigenous peoples or other vulnerable groups?		✓	Not applicable.
Other social concerns relating to inconveniences in living conditions in the project areas that may trigger cases of upper respiratory problems and stress?		✓	Not applicable.
Hazardous driving conditions where construction		✓	Road closures are not required. Construction

Screening questions	Yes	No	Remarks
interferes with pre-existing roads?			contractors will be required to implement traffic management plan and coordinate with Muktagacha local authority.
Poor sanitation and solid waste disposal in construction camps and work sites, and possible transmission of communicable diseases (such as STI and HIV/AIDS) from workers to local populations?		✓	Construction contractors will be required to provide sanitation facilities and ensure proper waste management at all times. Contracts will include provisions on STI and HIV/AIDS.
Creation of temporary breeding habitats for diseases such as those transmitted by mosquitoes and rodents?		✓	Construction contractors will be required to ensure cleanliness at all times to prevent breeding of mosquitoes and rodents.
Accident risks associated with increased vehicular traffic, leading to accidental spills of toxic materials?		✓	Not applicable.
Increased noise and air pollution resulting from traffic volume?		✓	Not anticipated.
Increased risk of water pollution from oil, grease and fuel spills, and other materials from vehicles using the road?		✓	Not anticipated.
Social conflicts if workers from other regions or countries are hired?		✓	Priority in employment will be given to local residents.
Large population influx during project construction and operation that causes increased burden on social infrastructure and services (such as water supply and sanitation systems)?		✓	Improved management systems through capacity building and institutional development will ensure reduced burden on services and infrastructure.
Risks to community health and safety due to the transport, storage, and use and/or disposal of materials such as explosives, fuel and other chemicals during construction and operation?		✓	Not applicable. Construction will not involve use of explosives and chemicals.
Community safety risks due to both accidental and natural causes, especially where the structural elements or components of the project are accessible to members of the affected community or where their failure could result in injury to the community throughout project construction, operation and decommissioning.		✓	Operational area will be clearly demarcated and access will be controlled. Only worker and project concerned members will be allowed to visit the operational sites.
Climate Change and Disaster Risk Questions The following questions are not for environmental categorization. They are included in this checklist to help identify potential climate and disaster risks.	Yes	No	Remarks
Is the Project area subject to hazards such as earthquakes, floods, landslides, tropical cyclone winds, storm surges, tsunami or volcanic eruptions and climate changes (see Appendix I)?	✓		The proposed drainage structures may be subject to river flooding and others relevant to climate changes. Appropriate considerations have been taken to mitigate the impacts.
Could changes in temperature, precipitation, or extreme events patterns over the Project lifespan affect technical or financial sustainability (e.g., increased extreme rainfall increases flooding, damaging proposed infrastructure)?	✓		
Are there any demographic or socio-economic aspects of the Project area that are already vulnerable (e.g., high incidence of marginalized populations, rural-urban migrants, illegal settlements, ethnic minorities, women or children)?		✓	Proposed project will not impact any marginalized population, rural-urban migrants, illegal settlement, etc.
Could the Project potentially increase the climate or disaster vulnerability of the surrounding area (e.g., by paving vulnerable groundwater recharge areas, or using water from a vulnerable source that is relied upon by many user groups, or		✓	Not applicable

Screening questions	Yes	No	Remarks
encouraging settlement in earthquake zones)?			

Appendix 2: Environmental Standards And Application Fees

The standards for air, water, sound, odor and other components of the environment applicable to the project shall be determined in accordance with the standards specified in Schedules 2, 3, 4, 5, 6, and 8 of ECR, 1997.

	Standards	ECR, 1997 (Rule 12) http://www.moef.gov.bd/html/laws/env_law/178-189.pdf
1.	Air	Schedule 2
2.	Inland surface water	Schedule 3
	Drinking water	
3.	Sound	Schedule 4
4.	Sound Originating from Motor Vehicles or Mechanized Vessels	Schedule 5
5.	Emission from Motor Vehicles	Schedule 6
7.	Odor	Schedule 8

The standard limits of discharge of liquid waste and gaseous emissions applicable to the project shall be determined in accordance with the standards specified in Schedule 9 and 10

	Environmental Component	ECR, 1997 (Rule 13) http://www.moef.gov.bd/html/laws/env_law/178-189.pdf
1.	Sewage Discharge	Schedule 9
2.	Waste from Industrial Units or Projects Waste (see discharge to inland surface water and irrigated land)	Schedule 10

The fees for issuance of environmental clearance certificate and its renewal shall be payable in accordance with Schedule 13. The fees for analysis of samples of water, liquid waste, air and sound and also the information or data derived from such analysis are described in Schedule 14.

	Fees	ECR, 1997 (Rule 14 and 15) http://www.moef.gov.bd/html/laws/env_law/178-189.pdf
1.	Environmental clearance certificate or renewal	Schedule 13
2.	Supplying various analytical information or data or test results of samples of water, effluent, air and sound	Schedule 14

¹“SCHEDULE – 13**Fees for Environmental Clearance Certificate or Renewal**

[See Rules 7(5), 8(2) and 14]

1. Industrial unit or project

Investment (in Taka)	Fees for Environmental Clearance Certificate (in Taka)	Certificate Renewal Fee
(1)	(2)	(3)
(a) Between Tk. 100,000 and 5,00,000	Tk. 1,500	One-fourth of the fees in Column (2).
(b) Between Tk. 5,00,000 and 10,00,000	Tk. 3,000	-Do-
(c) Between Tk. 10,00,000 and 50,00,000	Tk. 5,000	-Do-
(d) Between Tk. 50,00,000 and 10,00,00,000	Tk. 10,000	-Do-

¹ Schedule-13 was substituted by Notification S.R.O. No. 234-Law/2002 dated 24/08/2002 and came into force on 26/08/2002 being the date of publication in Bangladesh Gazette extraordinary issue.

crifek ArBb msKjb

224

(1)	(2)	(3)
(e) Between Tk. 10,00,000 and 2,00,00,000	Tk. 25,000	One-fourth of the fees in Column (2).
(f) Between Tk. 2,00,00,000 and 5,00,00,000	Tk. 50,000	-Do-
(g) Above Tk. 5,00,00,000	Tk. 1,00,000	-Do-

Appendix 3: Sample Outline Spoils Management Plan

- I. Spoils information
 - A. Materials type
 - B. Potential contamination
 - C. Expected volume and sources
 - D. Spoil classification
- II. Spoils management
 - A. Transportation of spoil
 - B. Storage of spoil
 - C. Contaminated spoil
 - D. Approved reuse and/or disposal sites
- III. Records of reuse and/or disposal

Appendix 4: Sample Outline Traffic Management Plan

A. Principles

1. One of the prime objectives of this TMP is to ensure the safety of all the road users along the work zone, and to address the following issues:
 - (i) the safety of pedestrians, bicyclists, and motorists traveling through the construction zone;
 - (ii) protection of work crews from hazards associated with moving traffic;
 - (iii) mitigation of the adverse impact on road capacity and delays to the road users;
 - (iv) maintenance of access to adjoining properties; and
 - (v) addressing issues that may delay the project.

B. Operating Policies for TMP

2. The following principles will help promote safe and efficient movement for all road users (motorists, bicyclists, and pedestrians, including persons with disabilities) through and around work zones while reasonably protecting workers and equipment.
 - (i) Make traffic safety and temporary traffic control an integral and high-priority element of every project from planning through design, construction, and maintenance.
 - (ii) Inhibit traffic movement as little as possible.
 - (iii) Provide clear and positive guidance to drivers, bicyclists, and pedestrians as they approach and travel through the temporary traffic control zone.
 - (iv) Inspect traffic control elements routinely, both day and night, and make modifications when necessary.
 - (v) Pay increased attention to roadside safety in the vicinity of temporary traffic control zones.
 - (vi) Train all persons that select, place, and maintain temporary traffic control devices.
 - (vii) Keep the public well informed.
 - (viii) Make appropriate accommodation for abutting property owners, residents, businesses, emergency services, railroads, commercial vehicles, and transit operations.

3. **Figure A2 to Figure A12** illustrates the operating policy for TMP for the construction of water pipes and the sewers along various types of roads.

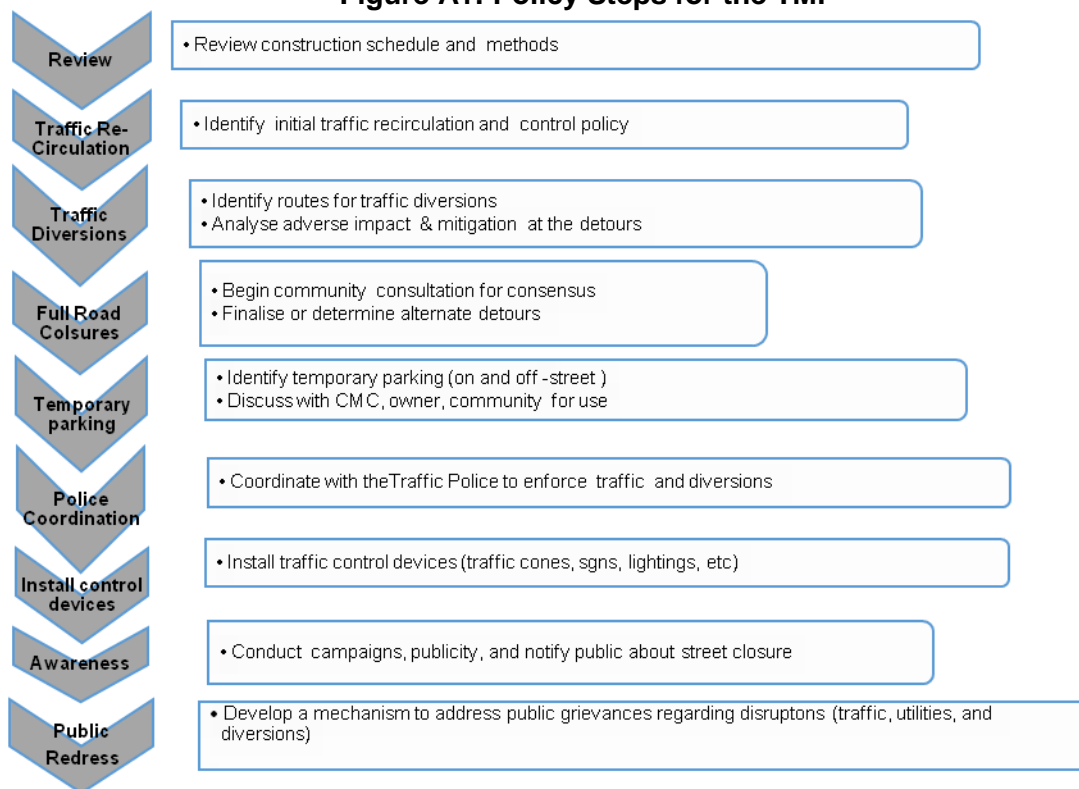
C. Analyze the impact due to street closure

4. Apart from the capacity analysis, a final decision to close a particular street and divert the traffic should involve the following steps:
 - (i) approval from the ULB/CMC/Public Works Department (PWD) to use the local streets as detours;
 - (ii) consultation with businesses, community members, traffic police, PWD, etc, regarding the mitigation measures necessary at the detours where the road is diverted during the construction;

- (iii) determining of the maximum number of days allowed for road closure, and incorporation of such provisions into the contract documents;
- (iv) determining if additional traffic control or temporary improvements are needed along the detour route;
- (v) considering how access will be provided to the worksite;
- (vi) contacting emergency service, school officials, and transit authorities to determine if there are impacts to their operations; and
- (vii) developing a notification program to the public so that the closure is not a surprise. As part of this program, the public should be advised of alternate routes that commuters can take or will have to take as result of the traffic diversion.

5. If full road-closure of certain streets within the area is not feasible due to inadequate capacity of the detour street or public opposition, the full closure can be restricted to weekends with the construction commencing on Saturday night and ending on Monday morning prior to the morning peak period.

Figure A1: Policy Steps for the TMP



D. Public awareness and notifications

5a. As per discussions in the previous sections, there will be travel delays during the constructions, as is the case with most construction projects, albeit on a reduced scale if utilities and traffic management are properly coordinated. There are additional grounds for travel delays in the area, as most of the streets lack sufficient capacity to accommodate additional traffic from diverted traffic as a result of street closures to accommodate the works.

6. The awareness campaign and the prior notification for the public will be a continuous activity which the project will carry out to compensate for the above delays and minimize public claims as result of these problems. These activities will take place sufficiently in advance of the time when the roadblocks or traffic diversions take place at the particular streets. The reason for this is to allow sufficient time for the public and residents to understand the changes to their travel plans. The project will notify the public about the roadblocks and traffic diversion through public notices, ward level meetings and city level meeting with the elected representatives.

7. The PIU will also conduct an awareness campaign to educate the public about the following issues:

- (i) traffic control devices in place at the work zones (signs, traffic cones, barriers, etc.);
- (ii) defensive driving behaviour along the work zones; and
- (iii) reduced speeds enforced at the work zones and traffic diversions.

8. It may be necessary to conduct the awareness programs/campaigns on road safety during construction.

9. The campaign will cater to all types of target groups i.e. children, adults, and drivers. Therefore, these campaigns will be conducted in schools and community centers. In addition, the project will publish a brochure for public information. These brochures will be widely circulated around the area and will also be available at the PIU, and the contractor's site office. The text of the brochure should be concise to be effective, with a lot of graphics. It will serve the following purpose:

- (i) explain why the brochure was prepared, along with a brief description of the project;
- (ii) advise the public to expect the unexpected;
- (iii) educate the public about the various traffic control devices and safety measures adopted at the work zones;
- (iv) educate the public about the safe road user behaviour to emulate at the work zones;
- (v) tell the public how to stay informed or where to inquire about road safety issues at the work zones (name, telephone, mobile number of the contact person; and
- (vi) indicate the office hours of relevant offices.

E. Install traffic control devices at the work zones and traffic diversion routes

10. The purpose of installing traffic control devices at the work zones is to delineate these areas to warn, inform, and direct the road users about a hazard ahead, and to protect them as well as the workers. As proper delineation is a key to achieve the above objective, it is important to install good traffic signs at the work zones. The following traffic control devices are used in work zones:

- (i) Signs
- (ii) Pavement Markings
- (iii) Channelizing Devices
- (iv) Arrow Panels
- (v) Warning Lights

11. Procedures for installing traffic control devices at any work zone vary, depending on road configuration, location of the work, construction activity, duration, traffic speed and volume, and pedestrian traffic. Work will take place along major roads, and the minor internal roads. As such, the traffic volume and road geometry vary. The main roads carry considerable traffic; internal roads in the new city areas are wide but in old city roads very narrow and carry considerable traffic. However, regardless of where the construction takes place, all the work zones should be cordoned off, and traffic shifted away at least with traffic cones, barricades, and temporary signs (temporary “STOP” and “GO”).

12. **Figure A2 to Figure A12** illustrates a typical set-up for installing traffic control devices at the work zone of the area, depending on the location of work on the road way, and road geometrics:

- (i) Work on shoulder or parking lane
- (ii) Shoulder or parking lane closed on divided road
- (iii) Work in Travel lane
- (iv) Lane closure on road with low volume
- (v) Lane closure on a two-line road with low volume (with yield sign)
- (vi) Lane closure on a two-line road with low volume (one flagger operation)
- (vii) Lane closure on a two lane road (two flagger operation)
- (viii) Lane closure on a four lane undivided Road
- (ix) Lane closure on divided roadway
- (x) Half road closure on multi-lane roadway
- (xi) Street closure with detour

13. The work zone should take into consideration the space required for a buffer zone between the workers and the traffic (lateral and longitudinal) and the transition space required for delineation, as applicable. For the works, a 30 cm clearance between the traffic and the temporary STOP and GO signs should be provided. In addition, at least 60 cm is necessary to install the temporary traffic signs and cones.

14. Traffic police should regulate traffic away from the work zone and enforce the traffic diversion result from full street closure in certain areas during construction. Flaggers/ personnel should be equipped with reflective jackets at all times and have traffic control batons (preferably the LED type) for regulating the traffic during night time.

15. In addition to the delineation devices, all the construction workers should wear fluorescent safety vests and helmets in order to be visible to the motorists at all times. There should be provision for lighting beacons and illumination for night constructions.

Figure A2&A3: Work on shoulder or parking lane and shoulder or parking lane closed on divided road

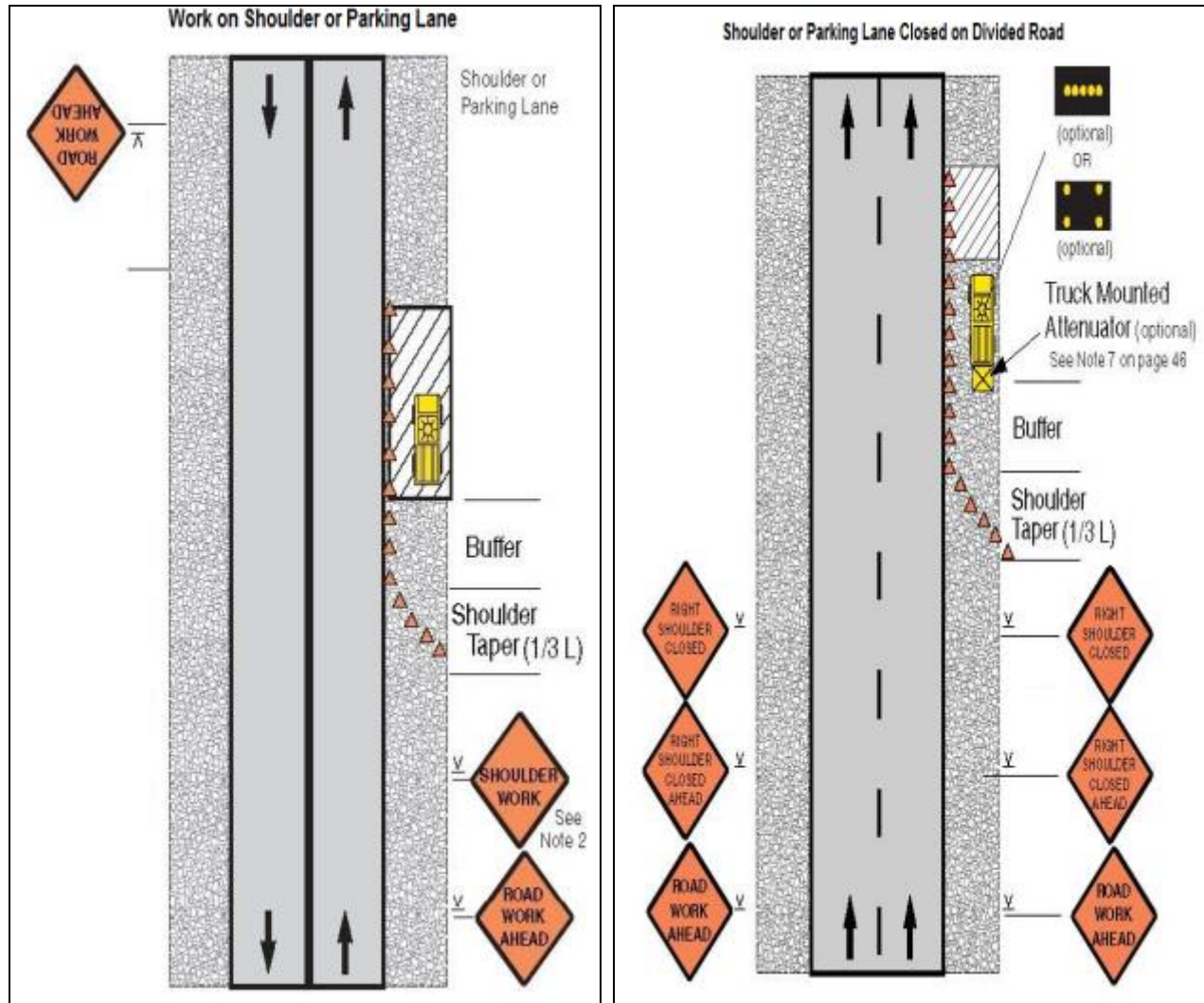
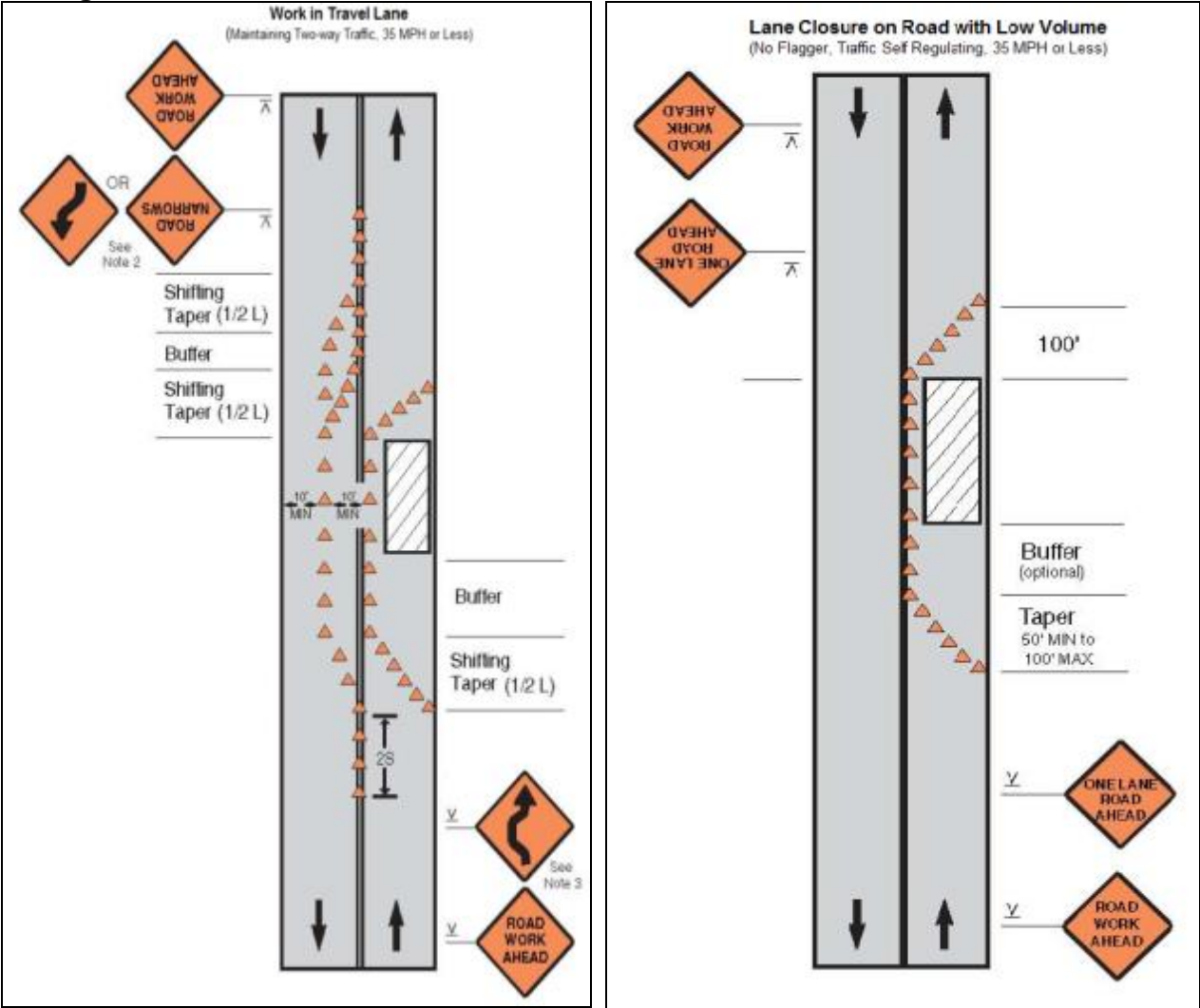


Figure A4&A5: Work in Travel lane & Lane closure on road with low volume



**Figure A6&A7: Lane closure on a two-line road with low volume (with yield sign)
& Lane closure on a two-line road with low volume (one flagger operation)**

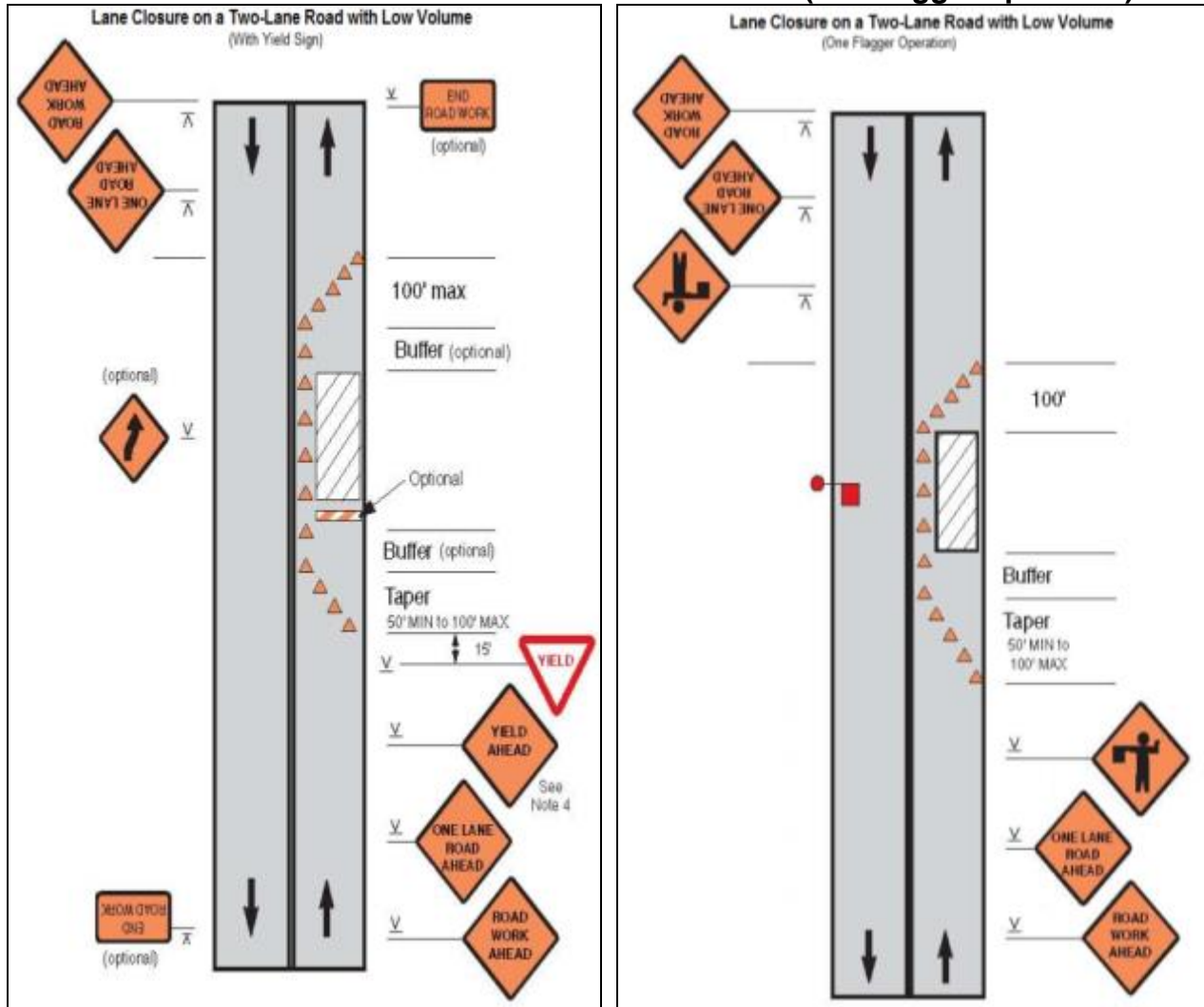


Figure A8&A9: Lane Closure on a Two-Lane Road (Two Flagger Operation) & Lane Closure on a Four-Lane Undivided Road

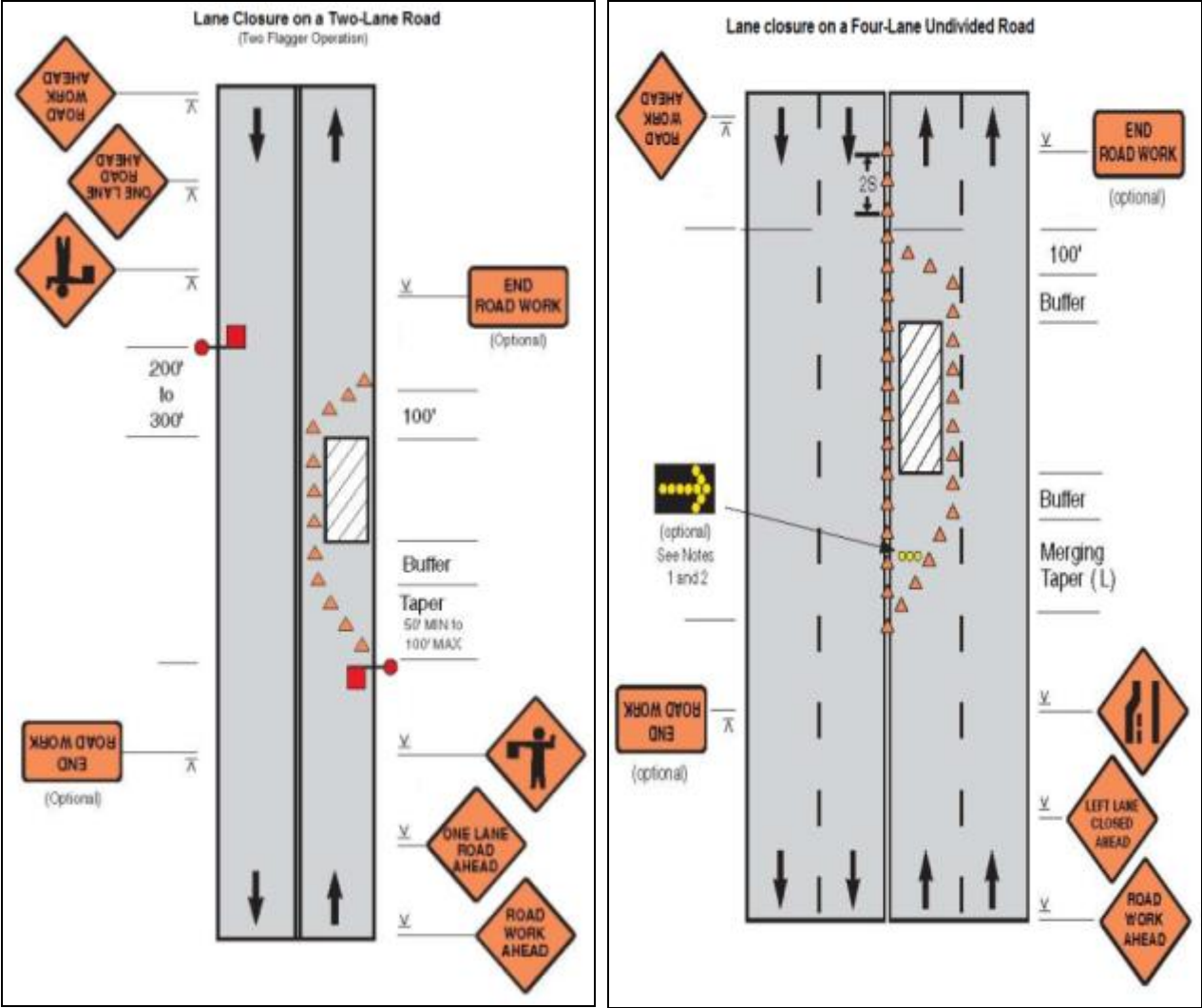


Figure A10&A11: Lane Closure On Divided Roadway & Half Road Closure On Multi-Lane Roadway

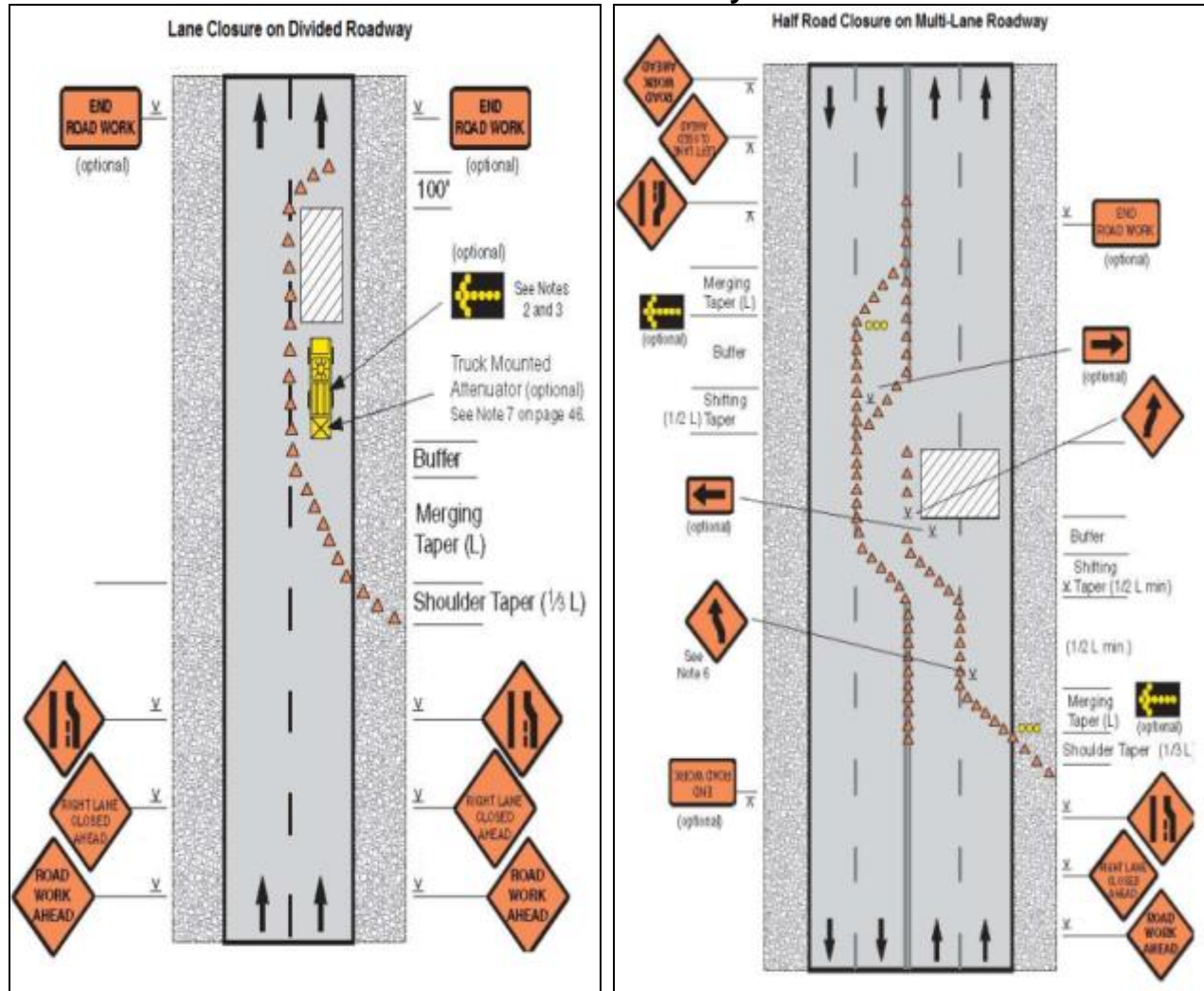
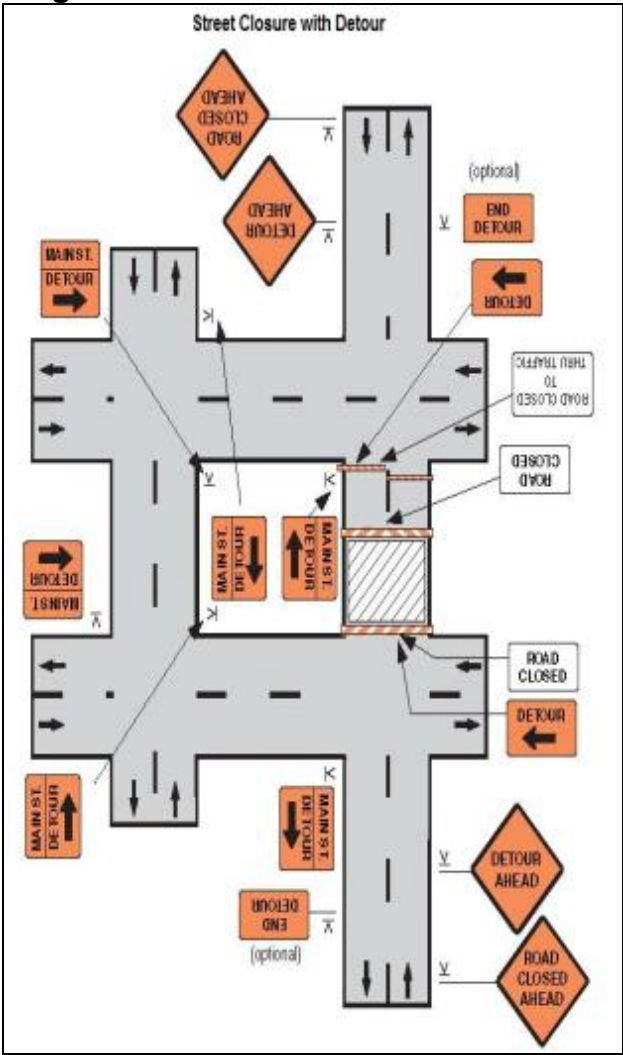


Figure A12: Street closure with detour



Appendix 5: Records Of Public Consultations And Fgds

FGD Summaries-Roads and Drain Muktagacha Pourashava

SL No.	Proposed Project Facility/Alignment Related to Which Discussion Held	Date	Venue	No. of Participants & gender	Key Safeguard Issues Discussed	Overall Concerns Expressed Related to Project	Suggestions From People	Willingness to Participate in Project
1.	R:6+7,R-8: Road Improvement D-2: Drain	Sep 10, 2014	Atani Bazar Road, Ward-04, 05	M= 11 F= 0 T= 11	Broken road & inadequate drain	Road damaged, water logging; Communication disrupted	Repair & rehabilitation of road with placating needed	Will extend their co-operation as & when required
2.	R-09, R-18: Road Improvement D03, D-20: Drain	Sep 10, 2014	Chourangir Mur, Ward: 02	M= 16 F= 0 T= 16	Road damage & Drain	Road badly damaged Rushness/ traffic jam of heavy vehicles	Proper improvement (re-constn.) by genuine contractors	Ready to co-operate; Will accept disturbance during erection;
3.	R:10: Road Improvement D-04, D-06: Drain	Sep 10, 2014	Mahila College Road, Ward: 02	M= 10 F= 0 T= 10	Road damage, congestion Traffic jam at peak hour	No major concerns; people are happy of their road improvement as it will benefit them immensely	Widening, drain construction, speedy construction	Will cooperate and accept disturbance during construction
4.	R-01,R-03: Road Improvement D-1: Drain	Sep 10, 2014	Nandibari, Ward: 01	M= 10 F= 0 T= 10	Roadside tree cutting; construction related impacts	No major concerns; people are happy of their road improvement as it will benefit them immensely	Speedy construction works to ensure low impacts; local employment; Post-project maintenance to be ensured	They will extend their cooperation in the implementation as the road will benefit them.
5.	R-02,R-11:Road Improvement	Sep 10, 2014	Ishwargram/ Nayeb Ali School Ward: 07	M= 10 F= 0 T= 10	Road damage, congestion Traffic jam at peak hour	No major concerns; people are happy of their road improvement as it will benefit them immensely	Widening, drain construction, speedy construction	Will cooperate and accept disturbance during construction
6.	R-03, R-13: Road Improvement	Sep 10, 2014	Monirambari, Ward: 01	M= 10 F= 0 T= 10	Roadside tree cutting; construction related impacts	No major concern; Road & side slopes damaged for long time; Traffic jam	Road widening & slope correction	Demand for early start-up of dev. works; They will co-operate in execution works as the road will benefit them.
7.	R-05: Road Improvement D-05: Drain	Sep 10, 2014	Nandibari (Maddyapara), Ward: 05	M= 10 F= 0 T= 10	Road improvement and possible environmental impacts	Road damage hampers people for easy access; Water logging at major parts.	Road widening at right direction to avoid PAPs; Speedy construction desired	They are ready to co-operate as road improvement urgently needed.

(M=No. of male participants; F= No. of female participants; T=Total participants)

Photograph

Location: Nandibari , Date:Sept 10, 2014 for Road D:01



Location: Atani Bazar , Date: Sept 10, 2014 for Road D:02



Location: Chourangir Mur, Date:Sept 10, 2014 for Road D:03



Location: Mohilla College Road, Date:Sept 10, 2014 for Road D:04



PARTICIPANT LIST

Town: Muktagacha Pourashava

Location: Atani Bazar Road, Ward-04, 05 (R:6+7, R-8, D-2)

Meeting Place: Roadside Tea Stall

Date: Sep 10, 2014

Time: 9:00am

Sl.	Name	Age	Sex	Cell No	Occupation
1.	Sree Banu Jamadar	50	Male	01983787149	Service
2.	Siddiquir Rahman	45	Male	-	Business
3.	Md. Aminul Islam	35	Male	01623755481	Tiles Mec.
4.	Haroon-ur-Rashid	34	Male	01912419542	Business
5.	Md. Omar Farouque	45	Male	01945145278	Mason
6.	Md. Matiur Rahman	38	Male	01918564302	Labor
7.	Md. Moffazal Hossain	36	Male	-	Labor
8.	Md. Rubel	32	Male	01744739707	Small Business
9.	Nurul Islam	40	Male	-	Labor
10.	Motaleb Farazi	50	Male	01719644823	Micro Business
11.	Jashim Ali Farazi	46	Male	-	Labor
12.					

Town: Muktagacha Pourashava

Location: Chourangir Mur, Ward: 02, 05(R:09, R-18, D-03, D-20)

Meeting Place: Roadside Shop

Date: Sep 10, 2014

Time: 11.00am

Sl.	Name	Age	Sex	Cell No.	Occupation
1.	Md. Ayub Ali	50	Male	01721528621	Service (Rtd.)
2.	Md. Golam Farouque	48	Male	01724945952	Business
3.	Md. Jalal Uddin	72	Male	-	Service (Rtd)
4.	Md. Fakrul Mia	38	Male	01714876735	Business
5.	Mohd. Toyeb Ali	65	Male	-	Shopkeeper
6.	Md. Ali	55	Male	-	Business
7.	Shawkat Ali	60	Male	-	Business
8.	Ali Akbar	30	Male	-	Business
9.	ATM Attaullah	40	Male	01714986486	Business
10.	Bidu Bhusan Dey	60	Male	017137308344	Teacher (Rtd)
11.	Shyomal Chandra Dey	45	Male	-	Service
12.	Sukumar Chandra Dey	55	Male	-	Service
13.	Md. Shaheb Ali	40	Male	-	Business
14.	Kashya Gour	50	Male	-	Service
15.	Jimi Gour	24	Male	01722661173	Business
16.	Md. Bashir Uddin	65	Male	01763585961	Business

Town: Muktagacha Pourashava

Location: Mahila College Road, Ward: 02 (R:10, D-04, **D-06**)

Meeting Place: Roadside Shop

Date: Sep 10, 2014

Time: 11.30am

SI	Name	Age	Sex	Cell	Occupation
1.	Md. Yusuf	45	Male	-	Rickshaw Puller
2.	Md. Fazlul Haque	47	Male	01713540506	Business
3.	Md. Shah Alam (Suba)	38	Male	01725921611	Business
4.	Mintu	27	Male	01928625966	Service
5.	Md. Yasin	23	Male	01921827892	Carpenter
6.	Jalal Uddin Sheikh	45	Male	01717367032	Business (TLCC)
7.	Rahmat (user)	33	Male	-	Van Driver
8.	Ehar Ali (user)	29	Male	-	Rickshaw Puller
9.	Rafique	24	Male	-	Rickshaw Puller
10.	Md. Abdul Haque	40	Male	-	Small Business

Town: Muktagacha Pourashava

Location: Nandibari, Ward: 01 (R-01, R-03, D-1)

Meeting Place: Roadside

Date: Sep 10, 2014

Time: 12.10pm

SI	Name	Age	Sex	Cell	Occupation
1.	Nazmul Hasan	25	Male	01756981988	Business
2.	Eshak Ali	50	Male	-	Business
3.	Billal Hossain	40	Male	-	Business
4.	Al-Amin	22	Male	01737076673	Mason
5.	Nazrul Islam	27	Male	01923653189	Unemployed
6.	Ramjan	23	Male	01684891286	Carpenter
7.	Md. Abul Hossain	60	Male	-	Business
8.	Habib (user)	26	Male	-	Rickshaw Puller
9.	Billal (user)	35	Male	-	Rickshaw Puller
10.	Rohan	33	Male	-	Tea Stall

Town: Muktagacha Pourashava

Location: Ishwargram/Nayeb Ali School Ward: 07 (R-02, R-11)

Meeting Place: Roadside

Date: Sep 10, 2014

Time: 1.45pm

SI	Name	Age	Sex	Cell	Occupation
1.	Shafiq	30	Male	01988297022	Service (Transport)
2.	Md. Mujibar Rahman	60	Male	-	Business
3.	Habibur (user)	35	Male	-	Rickshaw Puller
4.	Md. Haresh Mia	32	Male	-	Rickshaw Puller
5.	Mullick	33	Male	01918039795	Driver
6.	Md. Alauddin	45	Male	01199468359	Business
7.	Md. Mahsin	38	Male	-	Business
8.	Khoka Mia (user)	39	Male	-	Rickshaw Puller
9.	Alauddin	50	Male	-	Small Business
10.	Roman	25	Male	-	Business

Town: Muktagacha Pourashava

Location: Monirambari, Ward: 01 (R-03, R-13)

Meeting Place: Roadside

Date: Sep 10, 2014

Time: 2.30 pm

SI	Name	Age	Sex	Cell No.	Occupation
1.	Munni Chakravorty	40	Female	01737648724	House Wife
2.	Anil Chandra	75	Male	-	Service (Rtd.)
3.	Supritee Dhar	37	Female	-	Service
4.	Jalil	45	Male	-	Business
5.	Md. Masud (user)	30	Male	-	Driver (Van)
6.	Rahmat (user)	40	Male	-	Rickshaw Driver
7.	Md. Halim	30	Male	-	Rickshaw Driver
8.	Mustafiz	40	Male	-	Rickshaw Driver
9.	Renu Mia (usre)	28	Male	-	Rickshaw Driver
10.	Muslem (user)	26	Male	-	Rickshaw Driver

Town: Muktagacha Pourashava

Location: Nandibari (Maddyapara), Ward: 05 (R-05, **D-05**)

Meeting Place: Roadside Shop

Date: Aug 23, 2014

Time: 3.30pm

SI	Name	Age	Sex	Cell No.	Occupation
1.	Md. Shaheen	28	Male	-	Business
2.	Md. Jalal	20	Male	01732046411	Student
3.	Mahabooba Nima	22	Female	01717811120	Student
4.	Md. Anisur Rahman	45	Male	01797016618	Carpenter
5.	Md. Salahuddin	55	Male	01924171796	Business
6.	Habibur Rahman	50	Male	01715066710	Business
7.	Nizam (user)	34	Male	-	Rickshaw Puller
8.	Md. Delwar (user)	34	Male	-	Rickshaw Puller
9.	Mannan Mia (user)	61	Male	-	Service (Rtd.)
10.	Nasir	34	Male	-	Business

Officials Consulted during FGD conducting For Environment Safeguard

SI	Name	Position	Cell No.
	Muktagacha:		
1.	Md. Abdul Hye Akand	Mayor	0171236454
2.	Md. Yunus Ali	Secretary	01718637731
3.	Mukhlesur Rahman	Executive Engineer	01912066771
4.	Sukomol Roy	Assistant Engineer	01718605832

Appendix 6: Sample Grievance Registration Form

(To be available in Bangla and English)

The _____ Project welcomes complaints, suggestions, queries and comments regarding project implementation. We encourage persons with grievance to provide their name and contact information to enable us to get in touch with you for clarification and feedback.

Should you choose to include your personal details but want that information to remain confidential, please inform us by writing/typing ***(CONFIDENTIAL)*** above your name. Thank you.

Date		Place of Registration			
Contact Information/Personal Details					
Name		Gender	<input type="checkbox"/> Male <input type="checkbox"/> Female	Age	
Home Address					
Place					
Phone no.					
E-mail					
Complaint/Suggestion/Comment/Question Please provide the details (who, what, where, and how) of your grievance below:					
If included as attachment/note/letter, please tick here:					
How do you want us to reach you for feedback or update on your comment/grievance?					

FOR OFFICIAL USE ONLY

Registered by: (Name of Official Registering Grievance)	
Mode of Communication:	
<input type="checkbox"/> Note/Letter <input type="checkbox"/> E-mail <input type="checkbox"/> Verbal/Telephonic	
Reviewed by: (Names/Positions of Officials Reviewing Grievance)	
Action Taken:	
Whether Action Taken Disclosed:	<input type="checkbox"/> Yes <input type="checkbox"/> No
Means of Disclosure:	

Appendix 7: Sample Semi-Annual Reporting Format

This template must be included as an appendix in the EIA/IEE that will be prepared for the project. It can be adapted to the specific project as necessary.

I. INTRODUCTION

- Overall project description and objectives
- Description of subprojects
- Environmental category of the sub-projects
- Details of site personnel and/or consultants responsible for environmental monitoring
- Overall project and sub-project progress and status

No.	Sub-Project Name	Status of Sub-Project				List of Works	Progress of Works
		Design	Pre-Construction	Construction	Operational Phase		
		<input type="checkbox"/>	<input type="checkbox"/>	<input type="checkbox"/>	<input type="checkbox"/>		
		<input type="checkbox"/>	<input type="checkbox"/>	<input type="checkbox"/>	<input type="checkbox"/>		
		<input type="checkbox"/>	<input type="checkbox"/>	<input type="checkbox"/>	<input type="checkbox"/>		

Compliance status with National/ State/ Local statutory environmental requirements

No.	Sub-Project Name	Statutory Environmental Requirements	Status of Compliance	Action Required

Compliance status with environmental loan covenants

No. (List schedule and paragraph number of Loan Agreement)	Covenant	Status of Compliance	Action Required

II. COMPLIANCE STATUS WITH THE ENVIRONMENTAL MANAGEMENT AND MONITORING PLAN

- Provide the monitoring results as per the parameters outlined in the EMP. Append supporting documents where applicable, including Environmental Site Inspection Reports.
- There should be reporting on the following items which can be incorporated in the checklist of routine Environmental Site Inspection Report followed with a summary in the semi-annual report send to ADB. Visual assessment and review of relevant site documentation during routine site inspection needs to note and record the following:

- What are the dust suppression techniques followed for site and if any dust was noted to escape the site boundaries?
- If muddy water was escaping site boundaries or muddy tracks were seen on adjacent roads;
- Adequacy of type of erosion and sediment control measures installed on site, condition of erosion and sediment control measures including if these were intact following heavy rain;
- Are there designated areas for concrete works, and re-fuelling?

- (v) Are there spill kits on site and if there are site procedure for handling emergencies;
- (vi) Is there any chemical stored on site and what is the storage condition?
- (vii) Is there any dewatering activities if yes, where is the water being discharged;
- (viii) How are the stockpiles being managed?
- (ix) How is solid and liquid waste being handled on site?
- (x) Review of the complaint management system;
- (xi) Checking if there are any activities being under taken out of working hours and how that is being managed.

Summary Monitoring Table

Impacts (List from IEE)	Mitigation Measures (List from IEE)	Parameters Monitored (As a minimum those identified in the IEE should be monitored)	Method of Monitoring	Location of Monitoring	Date of Monitoring Conducted	Name of Person Who Conducted the Monitoring
Design Phase						
Pre-Construction Phase						
Construction Phase						
Operational Phase						

Overall Compliance with CEMP/ EMP

No.	Sub-Project Name	EMP/ CEMP Part of Contract Documents (Y/N)	CEMP/ EMP Being Implemented (Y/N)	Status of Implementation (Excellent/ Satisfactory/ Partially Satisfactory/ Below Satisfactory)	Action Proposed and Additional Measures Required

III. APPROACH AND METHODOLOGY FOR ENVIRONMENTAL MONITORING OF THE PROJECT

Brief description on the approach and methodology used for environmental monitoring of each subproject

- Monitoring of environmental IMPACTS on PROJECT SURROUNDINGS (ambient air, water quality and noise levels)
- Brief discussion on the basis for monitoring
- Indicate type and location of environmental parameters to be monitored
- Indicate the method of monitoring and equipment to be used

- Provide monitoring results and an analysis of results in relation to baseline data and statutory requirements

As a minimum the results should be presented as per the tables below.

Air Quality Results

Site No.	Date of Testing	Site Location	Parameters (Government Standards)		
			PM10 µg/m3	SO2 µg/m3	NO2 µg/m3

Site No.	Date of Testing	Site Location	Parameters (Monitoring Results)		
			PM10 µg/m3	SO2 µg/m3	NO2 µg/m3

Water Quality Results

Site No.	Date of Sampling	Site Location	Parameters (Government Standards)					
			pH	Conductivity µS/cm	BOD mg/L	TSS mg/L	TN mg/L	TP mg/L

Site No.	Date of Sampling	Site Location	Parameters (Monitoring Results)					
			pH	Conductivity µS/cm	BOD mg/L	TSS mg/L	TN mg/L	TP mg/L

Noise Quality Results

Site No.	Date of Testing	Site Location	LAeq (dBA) (Government Standard)	
			Day Time	Night Time

Site No.	Date of Testing	Site Location	LAeq (dBA) (Monitoring Results)	
			Day Time	Night Time

IV. SUMMARY OF KEY ISSUES AND REMEDIAL ACTIONS

Summary of follow up time-bound actions to be taken within a set timeframe.

V. APPENDIXES

Photos
 Summary of consultations
 Copies of environmental clearances and permits
 Sample of environmental site inspection report
 Others