



PAKISTAN WATER AND POWER DEVELOPMENT AUTHORITY

DASU HYDROPOWER PROJECT

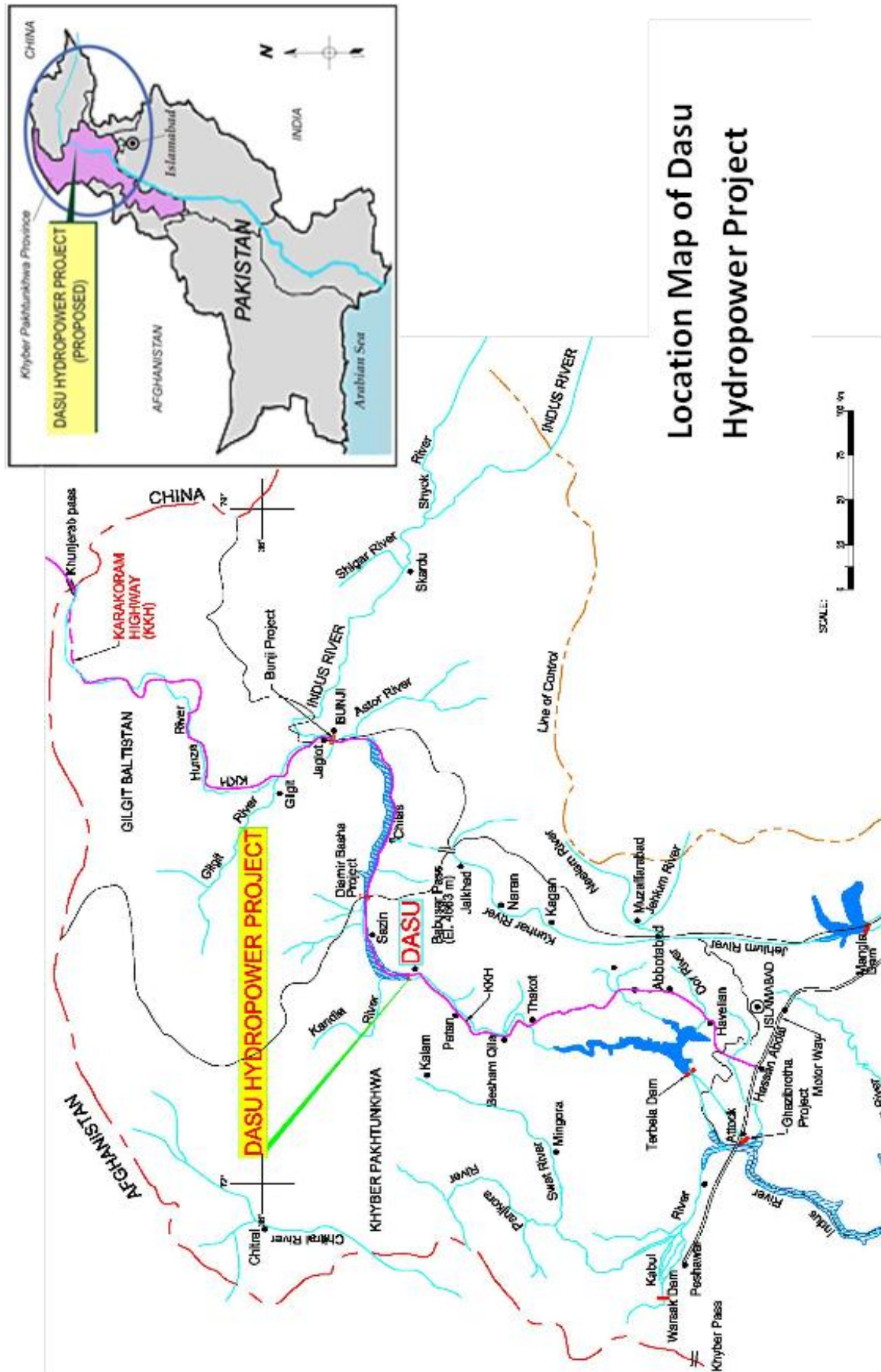


SOCIAL AND RESETTLEMENT MANAGEMENT PLAN

VOLUME 1: EXECUTIVE SUMMARY

General Manager (Hydro) Planning, WAPDA, Sunny view, Lahore,
Pakistan

22 January 2014



SOCIAL AND RESETTLEMENT MANAGEMENT PLAN

INDEX OF VOLUMES

Volume 1	Executive Summary
Volume 2	Socioeconomic Baseline and Impact Assessments
Volume 3	Public Consultation and Participation Plan
Volume 4	Resettlement Framework
Volume 5	Resettlement Action Plan
Volume 6	Gender Action Plan
Volume 7	Public Health Action Plan
Volume 8	Management Plan for Construction-related Impacts
Volume 9	Grievances Redress Plan
Volume 10	Communications Plan
Volume 11	Downstream Fishing Communities: Baseline and Impact Assessments
Volume 12	Area Development and Community Support Programs
Volume 13	Costs and Budgetary Plan
Volume 14	Safeguards Implementation and Monitoring Plan

ABBREVIATIONS

AH	Affected Households
AP	Affected Person
ASL	Above sea level
BCM	Billion Cubic Meter
BHU	Basic Health Unit
C&W	Communications and Works Department
CSC	Construction Supervision Consultants
BDP	Basha Dam Project
DC	Deputy Commissioner
EI	Elevation
EPA	Environment Protection Agency
EMA	External Monitoring Agency
EMAP	Environmental Management Action Plan
EA	Environmental Assessment
FHH	Female Headed Households
FWO	Frontiers Works Organization
FSL	Full Supply Level
GBHP	Ghazi Barotha Hydropower Project
GWh	Giga Watts Hertz
GOP	Government of Pakistan
GRC	Grievances Redress Plan
Ha	Hectare
IFC	International Finance Corporation
ILRP	Income and Livelihood Restoration Plan
IPOE	International Panel of Experts
KPK	Khyber Pakhtunkhwa
KKH	Karakorum Highway
LA &R	Land Acquisition and Resettlement Plan
LHV	Lady Health Visitor
LAA	Land Acquisition Act
LGO	Local Government Ordinance
LLG	Local Leading Group
MIS	Management Information System
MW	Mega Watt
M&E	Monitoring and Evaluation
MDP	Mangla Dam Project
MDRP	Mangla Dam Raising Project
NESPAK	National Engineering Services Pakistan
NRSP	National Rural Support Program
NGO	Non-Governmental Organization
NV	Negotiated Value
OP	Operational Policy
PAP	Project Affected Person
PD	Project Director
PKR	Pakistani Rupee (USD= 95 PKR)
PMU	Project Management Unit
PAP	Project Affected Persons
PRO	Project Resettlement Office
POE	Panel Of Experts
PMF	Probable Maximum Flood
PCR	Physical Cultural Resources
PHAP	Public Health Action Plan
RAP	Resettlement Action Plan
RF	Resettlement Framework
RMU	Resettlement Management Unit
RCC	Roller Compacted Concrete
RV	Replacement value
SPT	Social Preparation Team

SRMP	Social and Resettlement Management Plan
SDF	Social Development Fund
VC	Village Committee
WAPDA	Water and Power Development Authority
WB	World Bank
WCD	World Commission on Dams

GLOSSARY OF TERMS

Affected Persons	Any person or household adversely affected by any project related change or changes in use of land, water or other natural resources, or the person/s who loses his/her/their asset or property movable or fixed, in full or in part including land, with or without displacement, after the commencement and during execution of a project.
Compensation	Includes cash payment, deferred payment, a bond, an insurance policy, stipend, payment in kind, rendition of services, grant of privileges and disturbance money, entitlement to special treatment by government and semi government entities, grant of alternative land, grant of import licenses and business, trade and commercial facilities in addition to the rehabilitation and resettlement of an affected person.
Consultation	Consultation refers to two-way transfer of information or joint discussion between project staff and the affected population. Systematic consultation implies a sustained and rigorous sharing of ideas. Bank experience shows that consultation often yields the best resettlement alternatives, fruitful procedures for continued participation, and independent information on actual conditions for implementation.
Doli Elderly	Traditional cable cars to cross Indus River and Streams Persons over the age of 70 years (as per birth certificate).
Entitlement	The sum total of compensation and other assistance assessed according to the status of each individual belonging to the project area or related therewith and dependent thereon, by the designated Evaluation Committee or any other such body.
Household	People residing under one roof, using the same hearth and operating as a single economic unit.
Income restoration	Re-establishing income sources and livelihood of the affected persons according to their status as determined under the law.
Involuntary Resettlement	Any resettlement, which does not involve willingness of the persons being adversely affected, but is forced through an instrument of law.
Jirga	An assembly of elder men / tribal heads to discuss and decide about economic / social / cultural affairs of a village or community or the area including dispute between individuals and tribes in the project area.
Kanal	Land measurement Unit (1 <i>kanal</i> = 506 sq. meter)
Kharif Crop	In South Asia, a crop that is harvested at the beginning of winter
Land Acquisition	The process whereby a person is compelled by a public agency to cede all or part of the land a person owns or possesses, to the ownership and possession of that agency, for public purpose in return for compensation.
Malik	Head of tribe/sub-tribe responsible for dealing at village level with matters of land; law and order; benefits for the community; and community conflict.
Patriarchal Society	A patriarchal society is one whereby men are the decision makers and hold positions of power and prestige. Men will have greater economic power than women.
Patrilocal	A custom in which a wife goes to live with her husband's family or people after marriage.
Polygamy	The custom of having more than one wife at the same time.

Participation	Participation is conventionally divided into two dimensions: information exchange and decision making, each of which in turn has two component activities. Information exchange conventionally comprises dissemination and consultation. Decision-making comprises collaboration and direct extension of choice to affected individuals, households, or communities.
Poor	Those who are under the nationally defined poverty line
Project Area	The area specified by the funding and/or implementing agency according to the Official Gazette Notification and includes the areas within the administrative limits of the Federal or a Provincial Government.
Rabbi Crops	Crops sown in winter and harvested in the summer season, the term is derived from the Arabic word for “spring”.
Rehabilitation	Include all compensatory measures to re-establish; at least lost incomes, livelihoods, living and social systems. It does not include the payment of compensation for required assets.
Resettlement	Means all measures taken to mitigate any and all adverse impacts, resulting due to execution of a project on the livelihood of the project affected persons, their property, and includes compensation, relocation and rehabilitation.
Resettlement Action Plan (RAP)	The safeguard in which a project proponent specifies the procedures it will follow and the actions it will take to mitigate adverse effects, compensate losses and provide other development benefits to affected persons and communities.
Resettlement/Relocation Assistance (allowance)	Support provided to the people who are physically displaced by a project, to enable smooth resettlement transportation, including food, shelter, and social services. Assistance may also include cash allowances to compensate affected people for the inconvenience associated with resettlement at a new location.
Riwaj	Customary laws
Soniwals	People who extract gold from sand of Indus River
Sunni Sect	One of the two major sects in Islam (the other being Shi’as); the majority of Muslims are Sunnis.
Tehsils	The sub-division of a district
Terrace Agriculture	A flat fairly narrow, level strip of ground bounded by a vertical or steep slope and constructed on a hillside so that the land can be cultivated.
Trans-humane	The practice of moving livestock between different grazing lands according to the season, especially up to mountain pastures in summer and back down to valleys in winter.
Stakeholders	Include affected persons and communities, proponents, private and public businesses, NGOs, host communities and EPA.
Vulnerable Group	Vulnerable groups include the very poor, marginalized, informal settlers, <i>Gujars</i> , <i>Soniwals</i> , and female-headed households.

SRMP EXECUTIVE SUMMARY

TABLE OF CONTENTS

1	INTRODUCTION	1
1.1	PURPOSE OF THE REPORT.....	1
1.2	PROJECT LOCATION.....	1
1.3	PROJECT BACKGROUND	1
1.4	PROJECT RATIONALE	2
1.5	PAST EXPERIENCE AND ISSUES	2
1.6	RESETTLEMENT PLANNING PROCESS.....	2
1.7	SOCIAL AND ENVIRONMENT TEAM.....	3
1.7.1	Social Team.....	3
1.7.2	Environment Team.....	4
2	PROJECT DESCRIPTIONS	4
2.1	PROJECT COMPONENTS.....	4
2.2	LAND ACQUISITION.....	5
2.3	RELOCATION AND RESETTLEMENT	5
2.4	MEASURES TO MINIMIZE SOCIAL IMPACTS.....	6
3	SOCIO-ECONOMIC CONDITIONS	6
3.1	BASELINE AND SURVEYS CONDUCTED.....	6
3.2	SOCIO-ECONOMIC PROFILES OF KOHISTAN.....	7
3.2.1	Kohistan District	7
3.2.2	Demographic Information	8
3.2.3	Education and Literacy.....	8
3.2.4	Economy and Employment	8
3.2.5	Land Tenure, Land Use and Natural Resources	8
3.2.6	Agriculture and Local Irrigation Systems	9
3.3	SOCIO-CULTURAL CHARACTERISTICS AND BOUNDARIES.....	9
3.4	SEASONAL MIGRATION AND LIVELIHOOD.....	10
3.5	ROLE OF WOMEN.....	11
3.6	TRIBAL SYSTEMS AND LEADERSHIP	11
3.7	DISTRICT ADMINISTRATION AND TRADITIONAL GOVERNANCE SYSTEM 11	
3.8	POVERTY-CONFLICT-DEVELOPMENT NEXUS IN KOHISTAN.....	12
4	LEGAL AND POLICY FRAMEWORKS.....	12
4.1	NATIONAL LEGAL INSTRUMENTS.....	12
4.1.1	Constitution of the Islamic Republic of Pakistan	12
4.1.2	National Legislation.....	13
4.1.3	Land Acquisition Procedures.....	13
4.1.4	Specific Conditions of KPK.....	13
4.2	HARMONIZATION WITH WORLD BANK POLICIES.....	14
4.3	RESETTLEMENT FRAMEWORK	14
4.4	ELIGIBILITY CRITERIA AND CUT- OFF DATE	15
4.5	VALUATION OF ASSETS - METHODOLOGY.....	16

4.6	RESETTLEMENT EXPERIENCE IN PAKISTAN	17
5	CONSULTATIONS AND PARTICIPATION IN THE PLANNING PHASE	17
5.1	PUBLIC CONSULTATIONS AND PARTICIPATION	17
5.2	CONSULTATIONS UNDERTAKEN DURING PROJECT PREPARATION	18
5.3	FEEDBACK FROM CONSULTATIONS	19
5.3.1	Overall Attitude towards the Project	19
5.3.2	15-Point Charter of Demands.....	20
5.3.3	Key Concerns of APs and Affected Communities.....	20
5.3.4	Feedback from Four National Workshops	21
5.4	INCORPORATION OF FEEDBACK AND CONCERNS	21
6	DASU PROJECT IMPACTS – AN OVERVIEW	21
6.1	PROJECT IMPACTS	21
6.2	LAND ACQUISITION AND IMPACTS ON AGRICULTURAL LAND	22
6.3	TYPES OF AFFECTED STRUCTURES	23
6.4	AFFECTED TREES	23
6.5	IMPACT ON VULNERABLE GROUPS	23
6.6	GENDER IMPACTS OF THE PROJECT	24
6.7	OTHER IMPACTS	24
6.7.1	Traffic Safety.....	24
6.7.2	Influx of In-Migrants and Related Social Issues.....	25
6.7.3	Health, Safety and Hygiene.....	25
7	RESETTLEMENT AND LIVELIHOOD RESTORATION	26
7.1	WORLD BANK OP 4.12 – INVOLUNTARY RESETTLEMENT	26
7.2	RESETTLEMENT ACTION PLAN	26
7.2.1	Coverage and Objectives	26
7.2.2	Eligibility for Compensation and Assistance	27
7.2.3	Entitlement Matrix	27
7.3	DEMANDS FOR RELOCATION IN HIGHER ELEVATIONS.....	37
7.4	PREFERRED OPTIONS FOR RELOCATION.....	38
7.4.1	Checklist of Existing Amenities in the Villages.....	38
7.4.2	Resettlement Site, Lay out Design and Development.....	39
7.4.3	Social Preparation for Relocation and Resettlement	42
7.5	GENDER PLANNING AND OTHER VULNERABLE GROUPS.....	42
7.6	PHYSICAL CULTURAL RESOURCES	43
7.7	ASSESSMENT OF INCOME AND LIVELIHOOD RESTORATION	43
7.8	APPROACHES TO INCOME AND LIVELIHOOD RESTORATION PLAN (ILRP)44	
7.8.1	Short and Long-Term Livelihood Programs.....	44
7.8.2	Social Development Fund.....	45
7.8.3	Area Development and Community Support Programs	46
8	PUBLIC HEALTH AND MANAGEMENT OF CONSTRUCTION-RELATED IMPACTS.....	46
8.1	PUBLIC HEALTH ACTION PLAN (PHAP).....	46
8.2	MANAGEMENT PLAN FOR CONSTRUCTION-RELATED IMPACTS.....	46

9	COMMUNICATIONS PLAN	47
9.1	COMMUNICATIONS PLAN	47
9.2	SPECIFIC COMMUNICATIONS STRATEGIES.....	47
9.3	IMPLEMENTATION STRATEGY.....	48
10	GRIEVANCE REDRESS PLAN.....	48
10.1	OBJECTIVES AND SCOPE	48
11	INSTITUTIONAL ASPECTS AND IMPLEMENTATION	49
11.1	INTRODUCTION.....	49
11.2	ROLES AND RESPONSIBILITIES	50
11.2.1	Deputy Project Director-Safeguards.....	50
11.2.2	District Collector	51
11.2.3	Dedicated Teams for SRMP Implementation.....	52
11.3	TRAINING AND CAPACITY BUILDING	53
11.4	ROLE OF CSC CONSULTANTS.....	53
11.5	PARTICIPATORY RESETTLEMENT IMPLEMENTATION	53
11.6	ADAPTIVE MANAGEMENT APPROACH.....	54
11.7	DATABANK FOR RAP IMPLEMENTATION AND MONITORING	54
12	COSTS AND BUDGET	55
12.1	SOCIAL SAFEGUARD COSTS.....	55
12.2	SRMP TASKS AND FINANCING	55
12.3	SOCIAL SAFEGUARD FUND MANAGEMENT.....	56
13	MONITORING, EVALUATION AND REPORTING	56
13.1	PROJECT MANAGEMENT AND MONITORING.....	56
13.2	MONITORING LEVELS.....	57
13.3	REPORTING REQUIREMENTS	57
13.4	CONCLUSIONS.....	57

LIST OF TABLES

Table 1.1:	Social and Resettlement Management Plan	3
Table 2.1:	Land Acquisition Requirements by Components.....	5
Table 3.1:	Data Collection Methods used in the Study.....	7
Table 3.2:	Social and Cultural Characteristics	9
Table 5.1:	Number of Persons Covered In By Various Consultation Meetings	18
Table 5.2:	Summary of the Consultations Undertaken During Detailed Design.....	18
Table 5.3:	Key Issues Discussed in Meetings and <i>Jirgas</i>	20
Table 6.1:	Type of Losses of the Affected Households	22
Table 6.2:	Categories of Affected Land.....	22
Table 6.3:	Agriculture Land Affected and Ownership Status	22
Table 6.4:	Impact on Structures	23
Table 6.5:	Ground Area of Affected Structures.....	23
Table 6.6:	Affected Wage Earners.....	Error! Bookmark not defined.
Table 6.7:	Vulnerable Groups.....	24
Table 6.8:	Estimates of In-Migrants at Different Stage of Project Construction	25
Table 7.1:	Eligibility and Entitlement Matrix.....	27
Table 7.2:	Resettlement Strategies and Options.....	38
Table 7.3:	Civic Amenities in the Existing Villages.....	39
Table 7.4:	Livelihood Activities and Resources at Various Elevations.....	43
Table 7.5:	Major Income Sources at Various Elevations.....	Error! Bookmark not defined.
Table 7.6:	Affected Land by Types and Ownership Status. Error! Bookmark not defined.	
Table 7.7:	Losses of Income Sources at Lower Elevation (800-1000 m asl)	Error!
Bookmark not defined.		
Table 7.8:	Short and Long-Term Livelihood Programs.....	45
Table 8.1:	Typical In-Migrant Groups	Error! Bookmark not defined.
Table 8.2:	Codes of Conduct for Construction Workers and In-Migrants	Error!
Bookmark not defined.		
Table 10.1:	List of Issues Subject to Grievances.....	Error! Bookmark not defined.
Table 10.2:	Four- Tier GRC and Composition.....	48
Table 11.1:	Responsibilities of Main Stakeholders in SRMP Implementation.....	51
Table 11.2:	Teams for SRMP Implementation	53
Table 11.3:	Participatory Resettlement Implementation....	Error! Bookmark not defined.
Table 11.4:	General Outline of MIS and Monitoring Indicators.....	54
Table 12.1:	SRMP Costs	55
Table 12.2:	Major Tasks by Phases.....	55
Table 12.3:	Year Wise Budgetary Allocation for SRMP.....	56
Table 13.1:	Indicators to be considered in M&E	Error! Bookmark not defined.
Table 13.2:	Scope of External Monitoring.....	Error! Bookmark not defined.

LIST OF FIGURES

Figure 1.1:	Mapping Sustainability Profiles.....	Error! Bookmark not defined.
Figure 2.1:	General Layout Plan.....	5
Figure 3.1:	Seasonal Migration Pattern of People in the Project Area	10
Figure 7.1:	Mapping of Affected Villages and Preferred Location for Relocation	40
Figure 7.2:	A Sample Lay out Plan for a Resettlement Site.....	41
Figure 11.1:	Institutional Framework for RAP Implementation	50

1 INTRODUCTION

1.1 PURPOSE OF THE REPORT

This executive summary of the Social and Resettlement Management Plan (SRMP) has been prepared to provide the readers a comprehensive but precise “story” of the Dasu Hydropower Project (the Project) safeguard development processes and outcomes. It consists of (i) a broad overview of the Project and all documentations as key technical outputs; (ii) summary of policy, issues and mitigation measures, and (iii) framework for institutional and implementation aspects of various safeguard plans. The Report includes summary of the project impacts, consultations conducted with the affected communities, and the various plans and mitigations measures undertaken to address the project impacts and to improve their living standards in post-resettlement period. It also presents compensation policies, relocation/resettlement strategies, livelihood restoration measures, gender, public health, grievances redress procedures, and management of in-migrants and construction workers during project implementation. The implementation arrangements and cost and budgetary plans are also summarized. Finally, the Project data base management, safeguards monitoring, evaluation and reporting arrangements are discussed.

1.2 PROJECT LOCATION

The Project is located about 8 km upstream of the Dasu Bridge near Dasu town, in Kohistan District of Khyber Pakhtunkhwa (KPK) Province. It is a run of the river hydro electric power project to be constructed on the Indus River by Water and Power Development Authority (WAPDA) under the Ministry of Water and Power, Government of Pakistan. The Project area is in a mountainous region and is accessible from Islamabad by Motorway/G.T Road and Karakorum Highway (KKH) via Abbottabad. The District is divided by the Indus River into Right bank or Swat Kohistan and Left bank or Hazara Kohistan. Both Kohistan have their own history, cultures and languages. Further, the District is socially and spatially divided into different tribes and valleys. The villages and hamlets to be affected by the Project are located on both banks of the Indus River.

The people have built permanent houses on the lower altitudes of the mountains but migrate to temporary houses at higher elevations during summer to avoid the heat and feed their livestock as well. This seasonal migration is a “way of life” among Kohistanis and is tied to their pastoral economy supplemented by terrace agriculture and collection of forest fruits at different elevations. The hamlets/villages to be affected by the Project are on both Right and Left banks.

The Kohistanis are known as “conservatives” and often resist any major changes in their life styles. The hamlets are scattered and the population density is low – only 63 persons per square km. The 34 villages to be affected by the Project are divided into two major tribes, namely, Manzar Khel and Money Khel. In the Project area, each hamlet/village on an average contains 20 households. . And in most cases these households are closely related to each other by marriage and close kinship ties. There are also a few larger villages.

1.3 PROJECT BACKGROUND

The proposed project is an integral part of WAPDA’s “Vision 2025” and the Power Policy 2013 of GOP. The objectives of the Power Policy 2013 is to improve electric power generation capacity, the revival of the country’s economy by injecting cheap hydropower energy, and meet the future needs of Indus Basin irrigation system. The Feasibility Study of 2009 formed the basis for the Government of Pakistan (GOP) to proceed with the detailed design and construction plan for the Project. The World Bank is the lead financier of the Project. WAPDA is the project proponent and the Executing Agency (EA).

1.4 PROJECT RATIONALE

In recent times the energy requirements of Pakistan have been growing at the rate of 3-4 times of the annual rate of population growth. Consequently, the country is now facing one of the worst power shortages in its history. Further, the utilization of scarce fossil fuel resources of oil and natural gas for power generation and large imports of oil are adversely affecting the national balance of payments. Progressively increasing shortage of indigenous natural gas has necessitated the increased use of furnace oil, prices of which are tied with the oil prices in international markets.

Considering the current energy shortage and the heavy burden of non-renewable sources on the economy, exploitation of domestically available cheap hydropower potential through multi-purpose projects was accorded high priority by GOP. And, Pakistan is well endowed with this renewable energy resource of hydropower with a conservatively estimated potential of around 46,000 MW. Nevertheless, only a small fraction of about 6600 MW of this has been exploited up till now.

1.5 PAST EXPERIENCE AND ISSUES

WAPDA as an organization has vast experience in hydropower development. It has constructed a number of large and small hydropower generation projects all over the country and in the Indus Basin itself, including the Tarbela, Mangla and Ghazi- Barotha Hydropower projects, which required land acquisition and involuntary resettlement of the affected people. The Diamer-Basha Dam Project (DBDP) is another hydropower project under early stage of land acquisition and preparatory works. However, the implementation records of social and resettlement plans are uneven at best due to inadequate legal framework and socio-cultural factors.¹

In Pakistan, the experiences of relocation and resettlement have evolved over the past 50 years or so, starting from Mangla Dam Project (MDP) in 1967 to the latest Mangla Dam Raising Project (MDRP) in 2011. The experience of Ghazi-Barotha, commissioned in 2002, is viewed as a “milestone” in resettlement and post-project social development for the project-affected persons. In sum, while WAPDA had faced many problems resolving the displacement and resettlement issues in Mangla and Tarbela, the failure of redressing the resettlement and social issues has reinforced WAPDA to strengthen its capacity building in subsequent dam projects. Thus, recent experience and “innovations” in resettlement – for example, community driven resettlement and social development in the Mangla Dam Raising Project has establish a strong basis and promoted further understanding of international standards and good practices since the Ghazi-Barotha Project.

1.6 RESETTLEMENT PLANNING PROCESS

The Dasu Hydropower is a large, sensitive, complex and challenging project, given the extent of land acquisition and a variety of issues ranging from physical and economic displacement, loss of resources affecting livelihoods, and the tribal socio-cultural systems. Therefore, due attention has been paid early on to social and resettlement safeguard issues to comply with World Bank operational guidelines and international good practices, particularly focusing on negotiated land compensation approved by the local *Jirga* (council of elders), communications and disclosures, community participation in local decision-making, livelihood restoration programs, gender and community health, up and down stream impacts of the dam project, and management and monitoring of in-migrants and construction workers moving into the Project site. Thus, the scope of the project impact assessments was comprehensive to cover all potential losses to comply with safeguard planning requirements.

¹World Commission on Dams, *Displacement, Resettlement, Rehabilitation, Reparation, and Development* (Social Issues 1.3), 2000.

The social and resettlement planning activities undertaken to identify and address social impacts of the project interventions include (a) socioeconomic surveys; (b) census and inventory surveys; (c) surveys to identify existing amenities (d) gender survey and assessment; (e) livelihood survey and impact assessment; and (f) assessment of local public health system. The planning followed a participatory process through information sharing and consultation with local communities, through household level interviews and *Jirgas*, on impact identification, compensation and resettlement policies, options for relocation and resettlement, approach for livelihood development, and obtaining community perceptions on the project. The impact assessment surveys covered all aspects of the Project – the dam site, relocation of KKH, and other associated components of the Project.

The “packaging” of the safeguard documentation demonstrates the full coverage of impacts in the form of Social and Resettlement Management Plan. SRMP, which consists of 14 Volume reports, provides comprehensive coverage to the different social issues and project impacts, including mitigations and social development plan. The social safeguards and documentations prepared under the Project are listed in Table 1.1. A similar set of 8 volumes, namely Environmental Management Action Plan (EMAP), has also been prepared to deal with project environmental impacts.

Table 1.1: Social and Resettlement Management Plan

Vol.1- Executive Summary
Vol.2- Socioeconomic Baseline and Impact Assessments
Vol.3- Public Consultation and Participation Plan
Vol.4- Resettlement Framework
Vol.5- Resettlement Action Plan
Vol.6- Gender Action Plan
Vol.7- Public Health Action Plan
Vol.8- Management Plan for Construction-related Impacts
Vol.9- Grievances Redress Plan
Vol.10- Communications Plan
Vol.11- Downstream Fishing Communities: Baseline and Impact Assessments
Vol.12- Area Development and Community Support Programs
Vol.13- Costs and Budgetary Plan
Vol.14- SRMP Implementation and Monitoring Plan

The formulation of SRMP was guided by national laws and policies of GOP, “good practices” derived from recently completed hydro projects, and the World Bank’s relevant OPs and BPs concerning involuntary resettlement, social dimensions, gender, disclosure and public participation.² Thus, the policies and mitigation measures adopted meet international standards and practices.

1.7 SOCIAL AND ENVIRONMENT TEAM

The social and environmental assessment of the Project was undertaken by a team of national consultants with support from international specialists. The Team was led by Dr. Mohammad Zaman.

1.7.1 Social Team

The national consultants in the Social Team include: Maqsood Ahmad (Deputy Team Leader), Dr. Ramzan Chaudhary, Awais Hassan Khan (Resettlement Specialists), Anwar Fazal Ahmed, Arslan Tariq (Sociologists), Saima Raoof and Ujala Saleem (Gender Specialists), Rana Muhammad Saleem (Consultation Specialist), Ahmed Saleem (Communications Specialist), Noorul Hadi (Livelihood Specialist), and Dr. Ilyas Quershi (Public Health Specialist). The international specialists include Dr. Mohammad

² World Bank OP 4.12 *Involuntary Resettlement* (Revised Feb 2011), OP 4.20 *Gender and Development* (Revised March 2012), BP 17/50 Public Disclosure and Information.

Zaman, Dr. Sunil Gonnetilleke and Dr. Haimin Wang (Resettlement Specialists), Dr. Iffat Idris (Social/Conflict Analyst), and Dr. Bernhard Eder (Public Health Specialist).

1.7.2 Environment Team

The national consultants in the Environment Team include Zafar Iqbal Chaudry (Deputy Team Leader) and Mudassar Hassan (Environment Specialists), Dr. William George and Prof. Tahir Omer (Fishery Experts), Dr. Sajid Nadeem (Wildlife expert), Dr. Rehmatulla Qureshi (Vegetation Expert), Prof. Ihsan H. Nadiem and Irshad Ahmad Soomro (PCR Specialists), and Dr. Allah Baksh Sufi (CIIA Specialist). The international specialists include Dr. Venkata Nukala (Environmental Specialist), Malcolm Winsby (Aquatic Ecologist), Dr. Kashif Sheikh (Terrestrial Ecologist) and Dr. Masud Karim (Environmental Specialist – Climate Change).

The Social and Environment Team was supported by WAPDA's Independent Reviewers (Reiste Koopmans and Muhammad Omar Khalid) and International Panel of Experts (Dr. Gouqing Shi and Dr. Erik Hansen). World Bank Lead Safeguard Specialist Chaohua Zhang provided useful advice and guidance to the Team throughout the study period.

2 PROJECT DESCRIPTIONS

2.1 PROJECT COMPONENTS

The Project constitutes a 242 m high RCC concrete gravity dam with the reservoir behind the dam having a length of 74 km and average width of 365 m with storage capacity of 1.39×10^9 million m^3 of water at FSL El 950m. It is a run of the river dam. The reservoir area at FSL 950 m will be 23.85 km^2 . The Project will include underground powerhouses with 12 turbines; each of which will produce 360 MW power. The major components of the Dasu Hydropower Project listed below are presented in Figure 2.1.

- Main Hydraulic Structure-242m high (above foundation) and 571.5m long (at crest level) RCC Dam facilitating a reservoir of 0.82 BCM storage capacity at 950m above sea level,
- Power generation facilities, with 4 power & tailrace tunnels each, power houses (Stage I & II) containing 12 generating units with a total installed capacity of 4320 MW.
- Access roads, bridge and tunnels, and offices, residences and colonies for staff ; and
- Relocation of 68 km of KKH at higher elevation
- Two 500 kV Double circuit transmission line for evacuation of power from Dasu up to Islamabad via Manshera in KPK. (The transmission line will be designed and implemented by NTDC and social and environment work was done during this phase of study).

Other components of the Project include:

- Preparation of Social and Environmental Management Plan with Sub Components:
 - Social Impact Management (including relocation, resettlement and income and livelihood restoration)
 - Environmental Impact Management
 - Glaciers, watershed and flood monitoring
- Construction Supervision, Monitoring and Evaluation of the Project Impacts and Social and Environmental Management Plans
- Project management support, Capacity Building of WAPDA, Technical Assistance and Training.

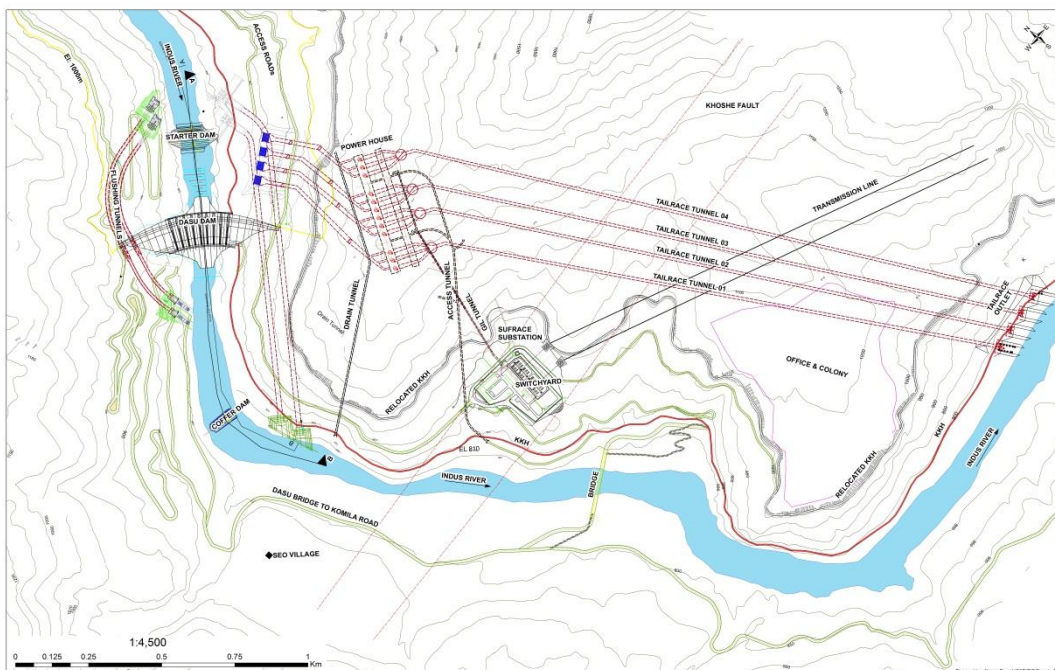


Figure 2.1: General Layout Plan

2.2 LAND ACQUISITION

The Project affected areas with regard to land acquisition footprint for above project components includes 34 hamlets/villages (17 on the Right bank and 17 on the Left bank). It has been estimated that the probable maximum flood (PMF) will not cause rise in the reservoir level beyond 957 masl. With further safety considerations the land acquisition zone for the reservoir has been determined as land below 1000 masl covering an area of 4006 ha. The downstream project development components and proposed facilities for the affected community require a further acquisition of 396 ha while construction of other roads like access road to the dam site requires the acquisition of another 199 ha. The construction of 68 km of road length to replace the inundated section of the KKH would require another 42 ha of land on the Left bank. The total land required, as per survey during 2011-2012 for the various project components is 4,643 ha. Table 2.1 below details the component-wise breakdown of the land requirement.

Table 2.1: Land Acquisition Requirements by Components

Component	Land Acquisition Requirement (ha)	Land Acquisition Requirement (%)
Reservoir Area	4,006	86.28
Dam and Powerhouse Plant Area	269	5.79
KKH Relocation:	42	0.9
Other Roads	157	3.38
Colony, Office and Construction Camps	102	2.19
Other Uses (Fish Hatchery, Archaeological Sites etc. and Resettlement Sites	67	1.44
Total	4,643	100

2.3 RELOCATION AND RESETTLEMENT

The adverse impacts of the Project, particularly in the context of land acquisition, have been assessed through field surveys, census, and community level *jirgas* and consultation meetings during this phase of study. The land acquisition for the Project will affect 767 households displacing 6,953 persons. In general, the impact includes loss of land (residential and agricultural); structures (residential, commercial and communal);

income and livelihoods (land owners, wage earners and *soniwals*). Moreover the Project will affect a total of 21,000 trees, 7 schools, 2 Basic Health Units (BHUs), 31 mosques, 1 government rest house, 10 micro hydropower power plants, 6 police check posts, 1 Frontier Works Organization (FWO) Camp, 14 'dolies' (traditional cable cars), 4 mechanical cable cars to transport timber, and 2 traditional water mills. This is further discussed in the section on relocation and resettlement of the project affected persons and communities.

2.4 MEASURES TO MINIMIZE SOCIAL IMPACTS

In order to minimize social impacts to the maximum possible extent, adequate provisions have been incorporated into the planning and design of the Project to minimize or mitigate any unavoidable impacts of project interventions. The key action taken to minimize impacts on the community includes the following:

- (i) First, the social and resettlement impacts (e.g., total households/population affected, land acquisition required, public responses and acceptance) were considered for selection of dam axis. Option 1 to Option 3 had the same impacts of resettlement while Option 4 to Option 7 have almost similar impacts on resettlement and environment. For instance, villagers were consulted about these alternatives. There was strong opposition against Option-1 to Option 3 due to submergence of Seo village and historic mosque and 200 years old graveyard at Seo. Therefore Option 5 and Option 6 were considered having same impact in respect of land acquisition, resettlement and environment. Option 5 was preferred on the basis of technical, resettlement and environment aspect on Option 6.
- (ii) Second, extensive consultations have been conducted with the affected communities and people in the project areas to take in their views and incorporate the same in the project design. For instance, the width of the access road on the right bank was reduced to avoid displacement of households.
- (iii) Third, the Technical and Social Teams have worked together to reduce the social impacts of the Project by means of both design adaptation and technical solutions. For example, the Project colony site initially selected was finally abandoned to avoid displacement of households. A new site with lesser impact was selected.

3 SOCIO-ECONOMIC CONDITIONS

3.1 BASELINE AND SURVEYS CONDUCTED

Socio-economic conditions in the project area was assessed as early as 2009 during the feasibility study, based on available secondary data, plus a small sample of potentially affected households. At detailed design stage, detailed field surveys – for example, survey on village profiles, socioeconomic surveys for baseline data, household level inventory of assets – and village level consultation and *jirga* meetings were held. Indeed, prior to field surveys, a grand *jirga* was conducted by the Kohistan District Deputy Commissioner (DC) in his office in Dasu. In the *Jirga*, a local committee was set up by the DC with at least one village head/*malik* from each affected village to assist the survey teams. Thus, during surveys the *malik* of the concerned village was key contact and supported the team to carry out surveys in the village. This was helpful as it complied with the local tribal system in terms of recognition of his status and power in the traditional system.

A primary objective of the baseline has been to describe and assess the current socioeconomic conditions in the project area, and then summarize the social impacts and finally the approaches and methods designed for mitigation of project impact and risks. The baseline thus will form the basis for pre and post-project comparison and

evaluation. A total of 320 household heads from 34 villages (directly or indirectly affected) were interviewed using a random sampling technique. Twenty seven of the 34 villages are from upstream and the remaining seven are from downstream. Out of the total 320 sampled households, more than 80 percent were directly affected households. The sampled villages are very typical for the Project area. Most of them are small comprising less than 20 households. Of the 320 sampled households, 157 (49 percent) were on the right bank and 163 (51 percent) on the left bank of the river. Only one of the 320 households interviewed was female-headed (right bank). In terms of marital status, heads of 313 households (98 percent) were married, while six (1.88 percent) were single, and one (0.31 percent) a widow. On average, each household on both right and left banks comprises eight members. The Resettlement Action Plan (RAP) for the Project is based on household level census of all 767 households to be affected and displaced by the Project.

Jirga meetings were conducted at village and district levels prior to the baseline survey. The focus was on understanding the relevant issues through a more qualitative approach using multiple techniques such as focused group meetings, social mapping, interviews of select tribal/sub-tribal heads or *maliks*, meetings with local experts/officials, non-government organizations, and local civil society members. The prevailing cultural constraints meant it was not possible to interview women of the area, even with female interviewers. Therefore, male heads of households provided information on women and their work within households. This was, however, later supplemented by a gender survey conducted through Lady Health Visitors (LHV) of the Department of Health Services. In sum, multiple methods were used for baseline and other surveys for safeguard planning. This is summarized in Table 3.1. The results of these surveys and mitigations are discussed in the appropriate sections.

Table 3.1: Data Collection Methods used in the Study

Unit/Level	Data Collection Tools and Techniques
Household Level	<ul style="list-style-type: none"> • Households Census/Interviews • Inventory of Losses Survey (structure, trees and other assets) • Inventory of community structures • Commercial structures survey • Gender assessment survey
Community Level	<ul style="list-style-type: none"> • Village Profiles survey • Livelihood Impact Assessment Survey • Public Health Survey • Community Consultations/<i>Jirgas</i>

3.2 SOCIO-ECONOMIC PROFILES OF KOHISTAN

3.2.1 Kohistan District

The word Kohistan literally means “land of mountains.” It is one of the most isolated and the most deprived district not only in Hazara Division but considered one of the least developed districts in the country. Swat is situated to its west, Chilas (Gilgit-Baltistan) on the northern side and Naran- Kaghan and Alai valley surround Kohistan from the southern and eastern sides. Dasu is the District headquarters, whereas Pattan, Palas, Kandia and Dasu are the four *Tehsils* (revenue unit) of Kohistan District. The River Indus flows through Kohistan and divides it socially and culturally. Its national significance is the Karakoram Highway that runs through the District to the Gilgit-Baltistan (Northern Region) and to the Chinese border to the northeast. This road is the main source of trade, transportation and link between Pakistan and China.

3.2.2 Demographic Information

The Population of the Kohistan district is almost entirely Muslim (99.6%) most of the people belong to Hanfi Sunni Sect. The projected population of Kohistan in 2008³ was 477,000, of which 55.43% are males and 44.57% are females. Kohistan consists largely of rural population living in the valleys along the river. The density is low with 63 per km² while the males per 100 females' ratio are 124.

3.2.3 Education and Literacy

The 10+ literacy rate in Kohistan is low (30%) compared to the national level of 57%. Low enrolment in and lower completion of primary grades is assumed to be the primary cause for low literacy. Gender disparity in educational attainment and in employment is a prominent feature of the socio-economic profile of Kohistan. Gender gaps in almost all social indicators are a common problem. This is reflected most obviously in education, with a sizable gender gap in literacy rates and enrollment rates as compared to national statistics.

3.2.4 Economy and Employment

The 1998 Census⁴ placed Kohistan at the bottom in terms of socioeconomic development indicators of the country. The proportion of the population that was working and employed was 26.4 percent, equivalent to 70.53 percent of the total labor force. Of the total employed population, 71.60 percent were self-employed, 10.68 percent worked as employees and 17.32 percent were unpaid family helpers. Compared to national-level statistics, poverty is endemic in the project area not only numerically, but also conditioned by and evident with regard to access/transportation, education, health and employment.

The main sources of livelihood are livestock, terrace agriculture, and forest products. Given the mountainous terrain, flat cultivable land is very limited and there is a high degree of terrace agriculture. People usually keep livestock – goats, sheep, even cows and bullocks – and the search for pasture is one reason for the seasonal migration between low and high altitudes. Section 3.4 discusses this seasonal migration in greater details.

3.2.5 Land Tenure, Land Use and Natural Resources

Ninety-five percent of land in the area is uncultivable consisting of forest areas and waste land or land not for cultivation. There are forests on both right and left bank of the Indus but on very high elevations quite above of the inundation level. Further, as the terrain of the district is mountainous there are scarcities of agricultural land and only terraces are available for cultivation. As a result, there are often disputes among the local tribes over land and forest resources. Even local water streams – called *nullahs* – are common source of dispute in Kohistan.

Traditionally, land was not permanently allotted to any individual or tribe – land was communally owned by the tribes in Kohistan. The tribes used to rotate their lands every five to ten years. However, after 1960, it was changed in favor of allotments on a permanent basis and most of the tribes distributed the land among individuals also. Thus, the lands are presently divided among the tribes and tribal members individually. Having said this, it must be pointed out that there is no formal or regular system of land tenure in the entire District of Kohistan. Likewise, there are no land titles or records due to lack of cadastral maps or surveys. The traditional ownership of land is recognized by the community as well by the local regulatory system and practices. .

³Pakistan Bureau of Statistics. *Pakistan Statistical Year Book 2011*

⁴The last available census data for Kohistan.

3.2.6 Agriculture and Local Irrigation Systems

Despite scarcity of cultivable land in the district, people practice limited terrace agriculture where it is possible. Only *kharif* crops are grown in high altitude lateral valleys which remain very cold in winter. Both *kharif* and *rabbi* crops grow in the lower valleys and along the banks of the Indus where ever land is available. The major crops grown in the district are maize, rice and wheat. Pulses such as *mot*, *kot*, red beans and vegetables like potatoes are grown. Agricultural products are solely for family consumption and nothing is produced for the local market.

Irrigation is not systematic. Almost all the valleys have gushing streams. The lands along the bank of streams, which can be commanded, are being irrigated through channels constructed by the people themselves through local irrigation system. In some areas land is also irrigated from springs.

3.3 SOCIO-CULTURAL CHARACTERISTICS AND BOUNDARIES

The tribal people of Kohistan consider themselves as substantially different from the majority of Pakistani population, especially, with regard to ancestry. Religious leaders – for example, *ulemas*, and *imams* – have a large influence on the local populations and the social set-up of the area. There prevails a sense of suspicion that outsiders, particularly NGOs, have a hidden agenda of social change detrimental to their religious and cultural practices and traditions prevailing in the area. Information disseminated through *imams* of the mosques is considered more reliable and acceptable. Due to influence of the religious leaders and the distance from other parts of the country, dissemination of daily general information is very limited. Electronic media such as television is still not generally accepted and newspapers are not readily available in the villages. Further, due to the high illiteracy rate printed material is not used much.

People in the Project area are divided along ethnic and tribal lines (see Table 3.2). The Indus River has traditionally formed a strong physical barrier preventing interaction between the two sides (Indus River Banks). They also have a different history – the right bank was part of Swat, the left bank of Hazara – and speak different languages. Kohistani is spoken on the right bank, and Shina on the left; each side can understand the other, but not speak their language. Due to its having been ruled by the Wali of Swat, there is more education and development on the right bank than the left. The tribal system exists on both sides of the river, but is stronger and more organized on the right bank.

Table 3.2: Social and Cultural Characteristics

Characteristics	Social and Cultural Characteristic of the Affected People
Geo/Social Boundaries	Strong social and cultural distinctions made between Indus River right and left bank people
Ethnic/Tribal distinction	In the right bank, there are 11 major tribes (divided into 33 sub-tribes); left bank has 13 major tribes (divided into 38 sub-tribes)
Linguistic difference	Right bank use Kohistani while left bank use Shina
Religious difference	According to DCR 1998 more than 99 percent of the entire population is Muslim. Almost all the Muslim population belongs to the Sunni sect of Islam.

Within the ambit of social structure, the basic residential/economic unit is the patrilocal joint family. Typically, this unit includes an elder's household and his married sons' families. Married sons generally live in their father's household with the latter or the eldest brother exercising authority over the extended family. The authoritative head of the household has the responsibility and authority to make decisions on behalf of the entire household members. It is generally the joint family that is the locus of primary solidarity and for daily economic activities.

3.4 SEASONAL MIGRATION AND LIVELIHOOD

Seasonal migration is very common in Kohistan and people practice it for a variety of reasons, livelihood and cultural – being the principal factors. Typically, the people commence migrating to higher elevations in May and start moving back in mid-October. In most cases, people in the Project area thus have two houses at various levels or altitudes of the mountains. The “permanent” houses are on the lower altitudes of the mountains along the river banks. They migrate to temporary houses at higher elevations of the same mountains during summer to avoid the heat and to feed their livestock. At higher elevations, the families own and/or have access to more grazing lands and forests. They prefer housing is at higher elevations but those who have jobs or businesses at lower elevation stay year-round in their lower elevation houses. This cyclical seasonal transhumance is common all over the valleys in Kohistan (see Figure 3.1 below).

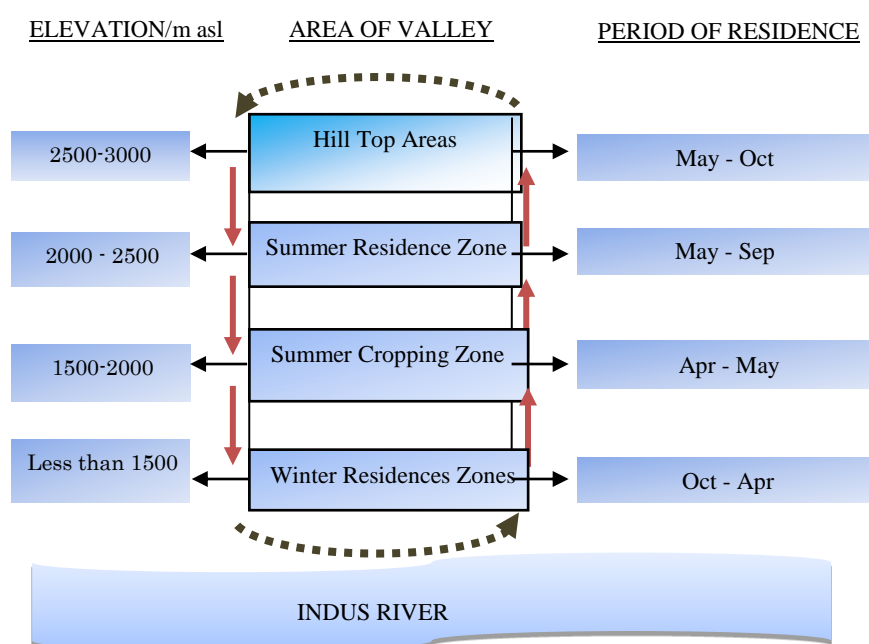


Figure 3.1: Seasonal Migration Pattern of People in the Project Area

In winter people live near the river; this is where they have their more permanent ‘winter residence’. Below 1,500 m asl two agricultural crops are possible, but there is little suitable land available for farming. Hence farmers cultivate higher land (2,000- 2,500 m), where only one crop is possible due to climatic reasons. This is where they build their “summer residence”. The pastoralists herd their livestock in summer at higher altitudes (2,500- 3,000 m) and have “temporary shelters”. They come down in winter together with their cattle. Those who are shepherds have a fourth house at the top and move there to graze their livestock. In sum, there are four ecological zones in the mountains that largely define live and livelihoods of the affected populations. The dependence for livelihoods is more on the higher elevations where there are terrace land, forests and grazing fields for the herds. This is explained clearly in Vol. 2 Socioeconomic Baseline and Impact Assessments (Chapter 4) and Vol. 5 Resettlement Action Plan (Chapter 7). Out-migration from the Project area is quite limited and largely tied to paid labor opportunities in places like Abbottabad, Mansehra, Rawalpindi and Swat districts. Entrepreneurs, too, migrate to downstream areas where there are more opportunities. Out migration is also noticed in the case of those who seek higher education.

3.5 ROLE OF WOMEN

Kohistan has a highly patriarchal society in which women are absent from public life. Females have, if any, lack opportunities to access education, they do not work outside the home without *Purdah*, and they do not participate in politics and have no say in decision-making, even within the household. Kohistan was among the only districts in Pakistan not to field any female councillors for the local government system introduced through the LGO 2001, in which 33% of all local government seats were reserved for women.

Purdah is very strictly observed – women are rarely seen on the street and markets. Even the entry of male first cousins into female areas of the home will often be forbidden. The role of women is as wives and mothers; they also carry out the majority of household and agricultural chores – cooking, washing, cleaning, collecting firewood, looking after livestock and working in the fields. The latter tasks are undertaken within the confines of *purdah*: areas of the forest, for example, are designated for women and no men will go there.

Polygamy is the norm in Kohistani society where the permission of previous wives is rarely sought before taking on new wives. Men still make every effort to prevent their women being influenced by the outside world. Televisions and dish antennae have become more common in the district, but these tend to be kept in rooms where only males have access – in most households women are not allowed to watch television.

3.6 TRIBAL SYSTEMS⁵ AND LEADERSHIP

Kohistan is divided by the Indus into Right bank and Left bank. Both parts of the Kohistan have their own history, culture and language. Further the district is divided into different tribes and valleys. The Main tribes of Kohistan district are Manzar Khel, Money Khel, Koka Khel, Manik Khel and Darram Khel. The two main tribes Manzar and Money occupy the Right bank of the Indus River known as Swat Kohistan while the main tribes on the Left bank of the Indus River, the Hazara Kohistan, are KokaKhel, ManekKhal and DarramKhel.

Generally two to three villages comprise a sub tribe and, traditionally, these sub tribes are headed by a tribal head called *malik*. *Malik* is a title name which means the head man of the village. In every village or sub tribe there is at least one *malik*, but informally people use the term *malik* to more than one person in the village. *Malik* is a person with money, power and respect from the villagers. The *Malik* takes decisions on behalf of his village community with involvement and consultation of the notables of the village and tribe. Issues beyond the level of the Malik are resolved through the *jirgas* process consists of Jirga of left side, grand Jirga of right and left bank and Jirga from outside Tehsil.

3.7 DISTRICT ADMINISTRATION AND TRADITIONAL GOVERNANCE SYSTEM

Kohistan District which includes the project area was under the Provincially Administrated Tribal Areas (PATA) in KPK Province. Notwithstanding that Kohistan became a District under the federal administrative system in 1976, practises of the local traditional governance system is still accepted by the provincial government and district administration in conjunction with the law of the country. The district administration involves the *maliks* and conducts *jirga* system for local decision-making and resolution of disputes or for project administration.

⁵Only Kalash people meet the definition of indigenous people as per WB OP4.10 Indigenous People. There are no Kalash people in the project area.

Jirga is a committee of elders representing all parties to a problem or issue which deliberate and decide on village or inter-village or inter-tribe problems and issues. *Jirgas* are constituted at different levels and is convened to resolve a particular issue. If the issue is within the family a *jirga* will be formed at the family level; if the matter is at village level a village level *jirgas* will be formed; if the matter is at tribal level the *jirgas* will be formed at tribal level; and if the issue is between different tribes the *jirgas* will be formed with the involvement of *maliks* from different tribes. In resolving issues which require legal interpretation Tehsil level and District level *jirgas* are convened which will include the Deputy Commissioner or his representatives.

In the specific requirements of the present project, given the absence of land records, surveys to establish land tenure and acquisition will be completed with the help of the local communities, *maliks* and *jirga* system. The assistance of the local traditional system will be obtained to resolve the conflicts (if any) related to land titling. Moreover, the traditional system can be helpful during the project implementation for establishing participatory planning and monitoring and grievance redress process/mechanism.

3.8 POVERTY-CONFLICT-DEVELOPMENT NEXUS IN KOHISTAN

As with the rest of Pakistan, the general nexus between poverty, conflict and development holds true for Kohistan.⁶ The district is characterized by high levels of poverty and deprivation. With regard to conflict, ownership of arms is common. However, in recent years both the prevalence of carrying arms and the number of violent incidents have dropped significantly. This drop is directly attributable to construction of the Karakoram Highway, opening of the district to the outside world, and increased employment opportunities (e.g. with NGOs, government). Further development and job creation could lead to further reductions in violence, and to peace and prosperity. Conversely, continued under-development combined with the prevalence of arms and weak writ of the state, could lead to violence in the district. The Dasu Hydropower Project has the potential to completely change the fortunes of the district – bringing jobs, infrastructure, services, business and income. In both near and long-term, considerable development is anticipated in Dasu and Kohistan that will benefit local populations and improve their income and standards of living significantly. The construction of the Dasu Hydropower Project is thus vital for ensuring development and peace in Kohistan.

4 LEGAL AND POLICY FRAMEWORKS

4.1 NATIONAL LEGAL INSTRUMENTS

4.1.1 Constitution of the Islamic Republic of Pakistan

The Constitution of Pakistan (1973) clearly addresses the protection of property rights (Article 24) that it includes “no person shall be compulsorily deprived of his property save in accordance with law” and “No property shall be compulsorily acquired or taken possession of save for a public purpose, and save by the authority of law which provides for compensation therefore and either fixes the amount of compensation or specifies the principles on and the manner in which compensation is to be determined and given.”⁷ Further, Article 4 (sub-clause/a of 1) reiterates that no action detrimental to the life, liberty, body, reputation or property of any person shall be taken except in accordance with law.

⁶ A detailed analysis is available in SRMP Vol. 2 Socioeconomic Baseline and Impact Assessments (Annex - Analysis of Poverty, Conflict and Development Nexus in Kohistan District).

⁷ National Assembly of Pakistan, Constitution of the Islamic Republic of Pakistan (1973).

4.1.2 National Legislation

The relevant legislation for land acquisition and compensation is included in the Land Acquisition Act of 1894 (amended). It sets out the procedure and rules for land acquisition and compensating the owners, as well as for compensating owners for damage caused to their properties, crops and trees affected by projects. Land to be acquired for the dam, appurtenant structures, and reservoir area will have to be compensated on the basis of land ownership; land revenue records and acquisition procedures in accordance with Land Acquisition Act of 1894 (LAA 1894). It comprises 55 Sections pertaining to area notifications and surveys; acquisition; compensation and apportionment of awards; dispute resolution; penalties; and exemptions. The relevant sections of the LAA basically govern the acquisition of private properties for public purposes for development projects in Pakistan.

In the absence of a specific resettlement policy, the LAA 1894 is the de-facto legal instrument governing resettlement and compensation to PAPs. However, it does not provide for the Project to give due consideration to social, cultural, economic, and environmental conditions associated with and affected by resettlement. Although LAA lays down detailed procedures for acquisition of private properties for public purposes and compensation, it does not extend to resettlement and rehabilitation of persons as required by donor agencies including the World Bank. Further, experience in other projects has established that compensation stipulated in the law may not be adequate to provide for equal or enhanced living status to resettled PAPs.

4.1.3 Land Acquisition Procedures

The LAA 1894 regulates the land acquisition process and enables the provincial government to acquire private land for public purposes. Land acquisition is a provincial responsibility and provinces have also their own province specific implementation rules like Punjab Land Acquisition Rules, 1983. The procedure for acquiring land both by Government for public purposes and for company has been described in the Land Acquisition Act. However, in the case of this Project, the LA procedures will not fully apply due to the specific conditions of KPK – for instance, lack of titles and records of ownership and the role of *jirgas* and local communities in the assessment and validation of land valuation and the compensation rates. In other words, the traditional system of *jirga* together with the District Collector Office will make most of the decision related to rates, compensation, relocation and project benefit sharing programs. The District Collector of Dasu will establish titled and ownership of land in the project area in consultation with local communities and *jirgas*. This includes (i) verification of land inventory already prepared by the Social Team, (ii) mapping of the acquired area (due to absence of cadastral survey) in consultation with the land users and maliks; and (iii) determination of ownership of land for the purpose of compensation.

4.1.4 Specific Conditions of Kohistan

In KPK area, customary laws or *riwaj* are also relevant besides the Federal laws. The customary laws and the traditions were established much before creation of Pakistan in 1947. The traditional governance system requires community support to maintain supply of critical resources such as land and water. The system also provides for at least one authority, chosen by the community, with responsibility for managing natural resources and enforcing customary laws. This centuries old traditional governance system is participatory and has roots in the communities. The main feature of this community-governed system is that it identifies and mobilizes notable, knowledgeable and wise men of the community for dispute resolution and decision making concerning management of individual and common resources. This potential of traditional leadership is relevant and has been used in resolution of disputes related to land acquisition for the project and

resettlement related activities. The *jirgas*⁸ system, described in previous section, has thus a formal and legal basis in the tribal regions in Pakistan.

4.2 HARMONIZATION WITH WORLD BANK POLICIES

The World Bank and other international development financing institutions, have their own safeguard policies to minimize displacement and require time-bound action plans with measures to restore or improve livelihood and income of those affected by development projects. Since the LAA 1894 falls short of these safeguard requirements, the project land acquisition and resettlement policy has been developed and harmonized with safeguard requirements of the financing institutions. The harmonization was carried out through a gap analysis involving the 1894 LAA and the WB Safeguard policies, particularly 4.12 Involuntary Resettlement Policy. The harmonization has also draws of the best practices in dam projects in Pakistan which have already narrowed down the gaps.⁹ The Project resettlement and entitlement matrix is based on the harmonized policy.

4.3 RESETTLEMENT FRAMEWORK

The resettlement framework for the Project has been formulated not only to develop policy aspects for all “known” impacts, but also to cover any unanticipated impacts during project construction work. In a mega project of this magnitude many unanticipated impacts may come up during the construction and implementation phase spread over a period of 7 years or more. As a result, the Project still poses significant potential safeguard risks during implementation. The Resettlement Framework (RF) will help guide the executing agency to deal with any unanticipated impacts or additional land acquisition necessary during project implementation. The RF provides guidelines in terms of (i) investigations of the impacts; (ii) survey and assessment; (iii) preparation of necessary plans to deal with unforeseen impacts of established project-wide policies, packages, implementation and monitoring procedures.

The framework covers all affected persons irrespective of titles to land and provides for relocation and livelihoods restoration. The persons/households affected by the project interventions will not only receive cash compensation for land and other assets at prevailing rates for full replacement cost but also will be given additional assistance for relocation and livelihood restoration. Thus, households to be displaced physically and affected economically will receive due compensation, relocation assistance, and allowances in accordance with the following guidelines and policy which are also part of project Resettlement Framework¹⁰.

- (i) Affected persons will be paid rate basis negotiated value for acquired land and market rates for loss of standing crops and trees;
- (ii) Owners of residential/commercial units will be compensated at replacement costs. Renters/leaseholders affected by loss of living quarters or commercial premises will receive compensation and resettlement benefit due to loss of income. Eligibility for compensation will not be valid for new persons occupying/using the Project sites after the cut-off date, in accordance with this policy;

⁸The British promulgated written treaties (Frontier Crimes Regulation of 1901) recognising *Jirgas*, guaranteeing non-interference in tribal affairs so long as the *Jirgas* recognized their suzerainty. The Government of Pakistan honours these treaties and has entered into similar arrangements of its own. Thus, the *Jirga* is normally a recognized institution in the tribal areas of Pakistan.

⁹ The harmonization and gap analysis is available in SRMP Vol. 4 *Resettlement Framework*, Annex 1.

¹⁰ SRMP, Vol. 5 Resettlement Framework, February 2013.

- (iii) Affected communal properties/structures or physical cultural resources will be re-built or replaced under the Project Resettlement Office (PRO) and Department of Archaeology supervision.
- (iv) Affected people will receive assistance to re-establish lost assets and livelihood.
- (v) The needs of women and vulnerable groups will be identified and provisions made for social and economic development support, employment, and means of subsistence to improve their status/livelihoods.
- (vi) In compliance with community preference, community managed resettlement sites will be developed by the project with basic civic amenities, including access to higher elevation sites.
- (vii) SRU will assist all PAPs directly and indirectly affected, in all aspects of relocation and resettlement including restoration of livelihoods. SRU will facilitate the participation of PAPs in the decision-making process concerning relocation and resettlement.
- (viii) The Project will guide, supervise, and monitor the land acquisition, compensation payment, and resettlement of the PAPs, including grievance redress and resolution of disputed claims for compensation/resettlement benefits.
- (ix) Grievance Redress Committees (GRCs) will be formed to ensure participation, and speedy and out of court settlement of as many disputes as possible.
- (x) Independent monitoring consultants will be hired by WAPDA to monitor resettlement/SRMP operations and outcomes evaluation.

Thus, according to the RF, all affected households and persons are eligible for compensation and resettlement assistance from the Project. In sum, the policy framework has been designed to ensure that those affected are not disadvantaged, receive full support during the resettlement processes and can regain their lost income and livelihoods.

4.4 ELIGIBILITY CRITERIA AND CUT- OFF DATE

For relocation and compensation, persons who have been adversely impacted as a result of the project interventions as construction of dam and reservoir, and project associated activities as construction camps and roads are considered as project affected persons (PAPs). Persons losing the right to own or use built-up structures as residences, shop/commercial enterprises, residential, agricultural, uncultivated or pasture land, crops and trees and natural resources such as forest or activities such as sand gold washing (i.e., *soniwals*) and other fixed or movable assets either in full or in part, permanently or temporarily and also persons losing jobs or employment opportunities (part or full time) and accessibility and physical connection have all been categorised as PAPs eligible for compensation. In this context persons who are positively affected and are not subject to adverse impacts described above are not considered PAPs. They are, along with the affected persons, are considered beneficiaries of the Project.

Eligibility to receive compensation and resettlement assistance will be limited by the “cut-off” date. In this Project, there are two cut-off dates. The first cut-off date is December 2012 when the project conducted census for household-level inventory to avoid any fraudulent and speculative claims by new settlers. This census has identified and established the households living in the project area and will be affected by the project. This census survey has also established a record of all losses at ownership level, including structures, trees and structure, with the exception of land whose household level ownership and loss is yet to be established with the development of cadastral mapping and establishment of a household level land record. The second cut-off date is issuance of Section 4 of the LAA 1894, which officially starts the acquisition process. Since the Project will be implemented in four phase (see Table 4.1), the cut-off date will be different for different components of the Project. Dasu District Collector has already

issued notification of Section 4 in July 2013 for areas involving Year 1 and Year 2 activities. The others are in the process of preparation as per schedule.

Table 4.1 Year wise Construction Activities and Cut-Off dates for Land Acquisition

Sr. No.	Year	Construction Activities	Affected Villages	DC Notification of Section 4
1	Year1	WAPDA Colony & Offices, KKH 01, Access Road (RAR 01), Disposal/Dumping Site, Machinery Yard, Rock and Crush Plant	Chuchang, Khoshi, Logro, Komila, Rango, Kass/Zaal, Seo, Barseen, UcharNullah, Gul-e-Bagh/Maidan	July 2013
2	Year 2	Quarry Area, Reservoir, KKH Re-alignment and RAR 02	Siglo, Kaigah, Larghani, Pani Bah, Melar, Kuz Kai, Kai Dogah and Seer Gayal	July 2013
3	Year3	Reservoir, KKH and RAR 03	Kot Gal, Not Bail, Sluch, Thuti, Waris Abad, Gadeer, Chalashi	To be notified in due course
4	Year4	Reservoir and KKH and RAR 04	Looter and ShoriNullah,, Doonder, Gummo and Cheer Shial, Summer Nullah, LachiNullah, Sazin Camp, Shatial	To be notified in due course

The affected households/villages under Year 1 & 2 have already been notified by the DC. Any persons moving into the project area after the first cut-off date (31 December 2012) or structures constructed after the cut-off date will not be entitled for compensation from District Collector/Project. Any persons moving into the project area after the cut-off dates or structures constructed after the cut-off date will not be entitled for compensation from AC (Revenue)/Project.

4.5 VALUATION OF ASSETS - METHODOLOGY

According to LAA 1894, the District Collector will prepare valuation of land, structure and trees for compensation. However, since there is no real land market in the tribal area, a negotiated value approved by the local *jirga* will constitute the market or replacement value for the purpose of the Project. The District Collector will receive assistance from the Communication and Works (C&W) Department and the Provincial Departments of Agriculture and Forestry to determine negotiated value for land and replacement value prices for assets as structures, and trees/crops.

As there is the possibility for the assessed value to be lower than the replacement costs the rates to be used in the valuation of all assets will be reviewed and revised, if necessary, at *jirgas* meetings where the Leading Group (LG) where members of the Village Committee (VC), the District Collector representative, and Director-Resettlement established under the Project Director (PD) of the Project Management Unit (PMU) are represented. The VCs were established by the Assistant Collector (AC) with recommendation of the village *malik* in every affected village, at the conclusion and recommendation of the district level *jirga* conducted in April, 2012..

For the project cost estimate purpose, the team has held initial discussions with local communities over the rates to get their feedback. Given the few transactions in Kohistan District, particularly of slope and lands not suitable for buildings, the best way is to turn to recently completed hydropower projects in Kohistan as reference. Keyal Khawr Hydropower Project compensation award was made in 2011. Its compensation rates were based and updated from Diamer Basha Project land compensation rates which

were awarded in 2008. In both project, the rates were adopted and used after negotiation and agreement with local Jirgas. The Dasu Project continued the same practice. It took Keyal Khawr Project rates and updated them to 2014 rates considering annual escalation. These rates are used for costing purpose in the RAP. However, as mentioned above, these rates are not final and they will be presented for consultation and agreement with local communities at *Jirgas*. Only the final agreed rates with local communities will be used to finalize and payment of the final compensation.

In sum, the Project will pay on rate basis the negotiated/replacement values to the PAPs through the District Collector and PAPs will be allowed to take away the materials salvaged from their dismantled houses and shops at no costs, despite the compensation paid. The cash payments will be made through crossed cheque in the name of the recipient PAP.

4.6 RESETTLEMENT EXPERIENCE IN PAKISTAN

In the mid-1990s and early 2000s respectively, the Ghazi Barotha Hydropower Project (GBHP) and Mangla Dam Raising Project (MDRP) were implemented and had well-developed resettlement plans which were in compliance with World Bank and Asian Development Bank guidelines.

Lessons drawn from Pakistan's experiences in dams, the inadequacies of the LAA 1894, and the need to reduce the adverse impacts of large scale hydropower projects on people have all been reviewed and incorporated in the "Evaluation of Past and Present Resettlement Plans in Pakistan, Nov 2011" (hereafter MOWP Study).¹¹ The "good practices" in resettlements in the Dasu Project are all derived from the review and recommendations from the MOWP Study (2011) to ensure that project resettlement is positively influenced. Some of the "good practices" included in the Study include (i) complete census of all affected persons irrespective of title; (ii) public consultation and disclosure; (iii) replacement value for assets; (iv) provisions for livelihoods; (v) special assistance to vulnerable groups; (vi) provision for Panel of Experts (POE) and, so on. A summary of the "good practices" is available in Annex 2 of Vol.4 Resettlement Framework.

5 CONSULTATIONS AND PARTICIPATION IN THE PLANNING PHASE

5.1 PUBLIC CONSULTATIONS AND PARTICIPATION

Public consultations and engagements with the affected communities have been the key principle in the Project planning phase. The Social Team, based in Dasu, established a strong rapport with the affected communities and local *maliks*. Residence in the project area and constant communications helped define the resettlement strategies of the Project and selection of relocation sites. In addition, community consultation helped reduce the extent of land acquisition and avoidance of displacement, particularly the Access Road and reduced disruptions and cultural conflicts significantly.

As indicated earlier in (3.6 Tribal System and Leadership) the *jirga* system plays an important role in local decision-making. Indeed, no project without *jirga* endorsement and approval is possible in Kohistan. So *jirga* is a vital consultative and decision-making tool. Thus, in Kohistan participatory approach to planning and implementation of development project is almost mandatory. To date, several grand and smaller *jirgas* have been held in Dasu concerning the Dasu Hydropower Project. The *jirgas* have provided good feedback from the project area and helped define the policy and entitlement matrix for the Project.

¹¹Evaluation of Past and Present Resettlement Plans in Pakistan, Nov 2011-NESPAK

This role and function of the *jirgas* will likely to continue during the implementation of the project.

5.2 CONSULTATIONS UNDERTAKEN DURING PROJECT PREPARATION

The earliest consultations on the Project were held during the EIA conducted as part of the feasibility study completed in 2009. On the basis of the scoping sessions, an assessment of the of PAP perceptions, apprehensions and reaction about the construction of the Dasu Hydropower Project was made. The main demands of PAPs at that time were: (i) reasonable compensation for losses of their assets, like land, houses, shops etc. and (ii) prompt and transparent payment of cash compensation so that they could resettle at the places of their own choices. Close to 800 persons attended these 16 different sessions throughout the project area.

At the detailed design stage, a more vigorous consultation programs were undertaken by WAPDA and the consultants. About 2392 persons were involved in various consultation meetings at the project sites (Table 5.1).

Table 5.1: Number of Persons Covered In By Various Consultation Meetings

No.	Activities	No. of participants
1	Social environmental surveys and inventory survey	1435
2	<i>Jirgas</i> meetings, consultation meetings	718
3	National consultative workshops	239
Total		2392

The initial field work for the detail design started in December 2011 and the important objectives of the initial meetings were to establish rapport and build trust for further impact assessment survey and studies. A Field Operation Office for the Social/Resettlement team was established in Komila in June 2012 to conduct social/resettlement and other surveys and studies. In addition to household level interviews, village *jirgas*/meetings and three grand *jirgas* meetings were conducted with the help of Dasu District administration. The grand *jirgas* meetings were attended by local notables, tribe chiefs, representatives, Deputy Commissioner, district level administration officers of education, healthcare and agriculture departments, news media, and local politicians (e.g. Assembly member of KPK Province) as well as NGOs working in the project area. These are summarized in Table 5.2.

Table 5.2: Summary of the Consultations Undertaken During Detailed Design

No.	Date	Objectives	Person/agency consulted	Issues/Feedback
Social Environmental Surveys and Resettlement Inventory Survey (1435 participants)				
1	May-July, 2012	Social economic survey	319 households	Basic socioeconomic and environmental information and development needs of displaced households collected
2		Resettlement Inventory survey	763 households	
3		Environmental baseline survey	63 households	
4	Aug. 2012	Gender survey	250 women respondents interviewed at Basic Healthcare Unit (BHU) and Rural Healthcare Center (RHC),	Basic information on women's social economic and health status and development needs collected
5	July.-Sep. 2012	Wildlife Survey	40 key informants along villages from Dasu to Basha area.	Locations of wild animal Presence, possible impacts on forestry and

			Officials of Forest Department	wild animals due to Project construction
Jirgas Meetings, Consultation Meetings (718 participants)				
6	28 Jul. 2011	Grand <i>Jirgas</i> meeting	1. Abdul Sattar Khan, Member of Province Assembly, KPK; 2. Members of Grand <i>Jirgas</i> (35 members)	Charter of Demands was presented to the Project Director
7	Dec. 2011	1. project area overview, 2. consultative meeting with local communities and the concerned departments; and 3. disclosure of project information	1.District Management; 2. Police Department; 3. Agriculture Department; 4. Health Department. 5. local communities along KKH highway	1. Reasonable compensation for losses of APs' assets, like land, houses, shops, etc. 2. Prompt and transparent payment of cash compensation.
8	2 Mar. 2012	1. <i>Jirga</i> meetings with notables/ tribal heads to seek consensus/trust building, 2. Pre-test of survey questionnaires 3. Consultative meeting with concerned departments	Total participants: 114 persons 1. Project affected tribes/sub-tribes; 2. <i>Jirga</i> members 3. Relevant governmental agencies	1. <i>Jirgas</i> decided to establish a committee by the notables of the area with consensus 2. This committee will decide survey schedule and assistance to be provided for the survey.
9	8 June, 2012	Follow-up of Charter of Demands	20 participants (<i>jirgas</i> members)	Time allowed for WAPDA to responding on local APs' demands
10	Sep-Oct. 2012	Follow-up of Charter of Demands	112 (73+39) participants (<i>jirga</i> members)	Responses for charter of demand by PD, latest demands collected from <i>jirgas</i>
11	May-July 2012	Consultation with affected tribe/sub-tribes	34 over 35 affected hamlets consulted (385 participants)	Needs collected from 34 affected hamlets
12	Aug-Sep. 2012	Consultation on availability of relocation sites	26 over 35 sub-tribes consulted (52 village leaders participated)	Only nine (9) of the 26 sub-tribes have relocation sites.
National Consultative Workshops (239 participants)				
13	Sep. 9, 2012	Peshawar workshop	41 participants	Focused on the project information disclosure, seeking comments and suggestions from participants to further gain support for and improvement of the Project
14	Sep. 24, 2012	Karachi workshop	37 participants	
15	Sep.17, 2012	Lahore workshop	88 participant	
16	Oct.2, 2012	Islamabad workshop	73 participants	
TOTAL			2392	

5.3 FEEDBACK FROM CONSULTATIONS

5.3.1 Overall Attitude towards the Project

There is a broad-based support to the Project as evident from the substantial assistance received by the Team during the surveys and studies. However, at the beginning of the consultation, a considerable level of opposition and concern about displacement and

resettlement were raised. That situation substantially changed after the Project Director and WAPDA attended the grand *jirgas* in March 2012. The affected communities and tribal elders now support the project and see a great opportunity for them to improve their quality of life and regional development.

5.3.2 15-Point Charter of Demands

On 28 July 2011, during disclosure meeting of environmental and social work done during the feasibility, the elders submitted a 15-point Charter of Demands to the PD as their benchmark for supporting the construction of the dam project. The main points in the Charter of Demands concern compensation rates for acquired assets (land and structure), employment, education, and healthcare facilities. WAPDA later prepared a response to the Charter of Demands.¹² The Charter of Demands was more than compensation for losses – it was clearly a call for local area development and community development programs as benefits of hydro project development in Dasu. Vol. 12 Area Development and Community Support Programs contains a set of programs that will be further discussed with *jirga* members and local administration prior to implementation.

5.3.3 Key Concerns of APs and Affected Communities

Table 5.3 lists key concerns raised by the affected persons and communities in local meetings and *jirgas*. These comments have been addressed in safeguards planning process and incorporated in various relevant safeguard plans.

Table 5.3: Key Issues Discussed in Meetings and *Jirgas*

Issues	Description
Compensation for land and other assets	The compensation issues and rates are of importance both to APs and WAPDA. The local demands have been for the rate applied in the case of Basha Dam upstream. LA notification has not been set yet by Dasu District Collector. In view of the absence of cadastral surveys/maps, it is important to prepare the maps and records first with community inputs and <i>jirgas</i> . However, the affected communities want WAPDA to fix the rate prior to Section 4 notification. A recent <i>jirga</i> formed a committee to discuss this with WAPDA Project Office which had meeting in November 2013 and decided that decision about rates and classification of land rest with District Collector of Dasu.
Resettlement Site development	Affected communities want to relocate to higher elevations to sites of their own choices in the hills with basic amenities to be built at project costs. People expressed their concerns regarding access road to new sites at upper elevations, water, power and irrigation systems for terrace cultivation.
Job and Employment	The affected communities/sub-tribes demand full employment in the project during construction and in post-construction periods and construction vocational training institute through Charter of demand.. Accordingly, WAPDA has also taken initiatives to conduct pilot training for candidates selected in batches from project affected households. In addition, some outside employment or overseas employment opportunities are also expected by local APs.
Livelihoods	The traditional terrace cultivation and animal herding by the sub-tribes will be affected due to relocation and lack of terraced land in upper elevations. Thus alternative livelihood after relocation must be explored since the vocational training mainly focused on the limited scope of APs, namely, youth with at least completed primary education.
Environmental and Social Issues	Despite community-based preferred relocation, it will bring some disruptions- for example schooling, access to market and health clinic. Two suggestions were made at meetings: (i) reforestation as an alternative livelihood after relocation, and (ii) the agro-ecosystem of the affected area and need for new irrigation support.

¹² See, Vol. 5 *Resettlement Action Plan*.

Health and safety issues	The health and safety issues during dam construction were discussed. Local people are concerned about migrant workers for dam construction, noise and air quality issues, and heavy traffic on KKH during the construction period. It was claimed that the dam will affect community health and well-being and will impact on their limited and fragile social infrastructure.
In-migrants and Outsiders	This has been flagged in the community level meeting as a very big concern by the affected communities. The “outsiders” – for example, construction workers, construction material suppliers and service providers (such as chefs, grocers, barbers, etc.) are required, in addition to local human resources. However, local villagers have “mixed” feeling about the outsiders moving in to work, including potential cultural and social conflict.

5.3.4 Feedback from Four National Workshops

The Dasu Hydropower mega project is not a project only for Kohistan. It has basin wide significance and is an important national project. Therefore, four national workshops (Peshawar, Lahore, Karachi and Islamabad, participants from Quetta were invited in Islamabad Workshop) were organized in September-October 2012 to disclose project impacts and to receive feedback from national experts and various related leading national agencies, including provincial EPAs.

The formats of the consultations meeting were as follows: (i) a brief presentation on the technical/engineering design; (ii) a presentation on the project social and environmental impacts; and finally (iii) round table and/or Q&A on project impacts and mitigations. A total of 239 participants representing various stakeholders, including NGOs/civil society members attended the workshops. The key points are summarized below:

- (i) The workshops added to WAPDA’s understanding of views of stakeholders.
- (ii) The workshop recommended due attention to good resettlement practices and long-term income and livelihood restoration,
- (iii) Implementation and capacity building of WAPDA for social and resettlement management was underscored by many participants
- (iv) Due attention to environmental management – for example, concerns on fauna /flora and biodiversity damage, noise and the quality of air control, social, economic and safety issues were raised.
- (v) The workshop recommended careful examination of climate change impacts on the dam projects and Indus River water systems.¹³

5.4 INCORPORATION OF FEEDBACK AND CONCERNS

All feedbacks and concerns from various consultation meetings and surveys have been considered in the design of the entitlement matrix, resettlement management and other measures in the project RAP. Some activities for example, vocational schools have been included in the Area Development and Community Support Programs as project investments in the local communities..

6 DASU PROJECT IMPACTS – AN OVERVIEW

6.1 PROJECT IMPACTS

The survey findings have identified a total of 767 households as being affected by the project interventions. The major impacts on the community have been identified as loss of structures including residential structures, land including agricultural land and income and livelihoods. In addition, loss of access to KKH and communication has also been

¹³ See, Vol. 3 *Public Consultation and Participation Pla. .*

identified as impacts requiring mitigation. Moreover, details of affected public facilities such as approach roads, electricity and water supply are also provided in Vol. 5 RAP.

Table 6.1: Type of Losses of the Affected Households

Type of Loss	Affected Households (AHs)
HH having Agriculture land	600
Structures (Homestead, Commercial Establishment and Others)	753
Affected <i>Soniwal</i> households	13
Total Affected Households (AHs)	767
Community and Public Structures, including Historical Mosques	80

Source: Field Surveys, 2012.

6.2 LAND ACQUISITION AND IMPACTS ON AGRICULTURAL LAND

In the absence land title records, owners of agricultural and other types of land have to be established through joint efforts of District Collector and PD Office and in case of disputed land by convening *jirgas*. The census and inventory conducted as part of the surveys has listed ownership of land to be further confirmed by the District Collector through cadastral survey and titling in consultation with the affected communities and *jirgas*. WAPDA has provided additional resources to District Collector for timely completion of the tasks. A total of 4,643 ha of land will be affected due to the project interventions. The different categories of land are given in the following Table 6.2.

Table 6.2: Categories of Affected Land

Land Categories	Affected Land (Hectares)	Ownership (%)	
		Individual	Communal
River Area (state land)	1,067	-	-
Agriculture Land	143	100	-
Barren Land	3,126	78	22
Grazing Land	280	84	16
Land Under Structures	27	100	-
Total Land Required	4,643	352	38

Source: GIS Mapping Detailed Design, DHC

According to the field surveys the number of households affected by acquisition of agricultural land is 600. About 302 of the affected households are on the Left Bank and the rest on the Right Bank (Table 6.3). About 68% of the land is cultivated by owners and 24% by sharecroppers. Tenant farmers are about 7%.

Table 6.3: Agriculture Land Affected and Ownership Status

Sr. No.	Nature / Type	No. of Respondents			%
		Left Bank	Right Bank	Total	
1	Owner	229	183	412	68.67%
2	Owner cum Tenant	0	2	2	0.33%
3	Tenant	19	20	39	6.50%
4	Contractor	2	0	2	0.33%
5	Share Cropping	52	93	145	24.17%
	Total	302	298	600	100.00%

Source: Field Surveys, 2012.

Most of the affected households will be losing only a small fraction of their incomes from agriculture as they have more productive terrace agricultural fields in upper elevations, plus access to forest and fruit products as a source of income. This is further illustrated by impact loss analysis presented in Section 7.8.

6.3 TYPES OF AFFECTED STRUCTURES

Out of the 923 affected structures, the highest number of structures that will be affected are residential structures (83%) followed by 80 (8.67%) community and public structures. Commercial structures being affected by the Project are 76. Table 6.4 below presents usage wise details of the affected structures.

Table 6.4: Impact on Structures

Location (River Bank)	Affected Structures							
	Residential Structures		Public and Community Structure		Commercial Enterprise		Total	
	No.	%	No.	%	No.	%	No.	%
Left	374	87.38	45	10.51	9	2.10	428	46
Right	393	79.4	35	7.1	67	13.5	495	54
Total	767	83.10	80	8.67	76	8.23	923	100

Source: Field Surveys, 2012.

In addition to private structures requiring relocation, total 3 structures (i.e., rock carvings), two old mosques, and community graveyards have been listed under physical cultural resources (PCR). This is further explained and addressed in the PCR Management Plan¹⁴ under the Environment Management Action Plan.

CONSTRUCTION TYPE OF AFFECTED STRUCTURES

Of the 1296 affected structures, close to 50% comprise of *katcha* houses, followed by 36% semi *pucca* structure construction. Only 9 % of the total structures comprise *pucca* houses and wood/bamboo constructions were less than 1% (see Table 6.5).

Table 6.5: Ground Area of Affected Structures

Structure Type by construction materials	<i>Katcha</i>		<i>Pucca</i>		Semi <i>Pucca</i>		Wood/Bamboo		Others		Total	
	m2	%	m2	%	m2	%	m2	%	m2	%	m2	%
Left	23,019	51	1174	14	11489	36	35	15	2143	72	37,860	42.9
Right	21,711	48	6970	86	20382	64	203	85	817	28	50,083	56.7
Access Road	293	0.7	0	0	45	0.1	0	0	0	0	338	0.4
Total	45,023	51	8144	9	31916	36	238	0.3	2960	3	88,281	100

Source: Field Surveys, 2012, DHC

6.4 AFFECTED TREES

An estimated 21,000 trees will be affected. This assessment was based on an analysis of GIS/satellite data. These trees are located on the affected agricultural land but many are on mountains/hills. The Social Team was unable to make any dependable count due to time constraints and difficulties in making estimates of trees up to 1000m elevation on the mountains. As per the LA processes, the District Collector will count tree numbers during their survey for compensation purposes.

6.5 IMPACT ON VULNERABLE GROUPS

Certain groups of population by virtue of their socio-economic realities are considered socially vulnerable and thus in need of special consideration so that they can benefit from the development activities of the project. These groups include: (a) Hard core poor households, (b) Female-headed households (FHH) and (c) Households headed by

¹⁴ EMAP, Vol. 7 PCR Management Plan.

differently-abled persons. These groups have been recognized as “vulnerable groups” under the Project. In addition, *soniwals* who would lose their main income source as a result of the project impacts have also been included in the list of “vulnerable households”.

Table 6.6: Vulnerable Groups

Village	Nature	No.
Gummo	Differently-abled	1
Sigloo	Female Headed	1
Cheer Shial (<i>Gujjar</i>)	Landless	6
<i>Soniwal</i> /Group of people (living in tents and regularly moving from one place to the other)	Landless; No stable income	13
Overall	Poor	50
Total		71

Source: Field Surveys, 2012.

A total 71 of the affected households were identified as falling within the category of socially and economically vulnerable groups. As detailed in Table 6.7 above, of the 71 vulnerable affected households 70 % comprise those losing their agriculture land thereby making them vulnerable. Amongst the remaining vulnerable households, 18% comprise landless, followed by a female headed and a differently-abled headed household. Taking into account the socio-economic vulnerabilities of the affected households, specific provisions and special measures have been incorporated in the RAP to ensure that they are not marginalized in the process of project implementation.

6.6 GENDER IMPACTS OF THE PROJECT

A gender assessment was conducted under the project. The assessment revealed the lacking development status of women, analyzed the challenging environment and explored potential entry points for gender interventions under the project. . A Gender Action Plan (Vol.6) has been prepared highlighting on the gender issues and recommended measures to work with the community so that women can benefits from the Project implementation. A Gender Action Plan was developed on the basis of this assessment. The action plan recommends a three-prong approach. The first is to educate project staff, including construction forces to raise awareness and increase sensitivity on gender. The second is to educate men, such as maliks, religious leaders and husbands on the importance for women to access project benefits. The third is to identify existing and future entry points and use them as much as possible to benefit women. It is cautioned that, given the sensitivity, all interventions related to women will need to be discussed and agreed with the communities first before putting to implementation. This is further discussed in Section 8.

6.7 OTHER IMPACTS

6.7.1 Traffic Safety

KKH is the life line of northern areas as it is the only highway connecting the north of Pakistan with the rest of the country. About 2,590 vehicles per day use the KKH. Of these, nearly 15 percent are heavy vehicles and trucks that transport goods. Generally the traffic along KKH in the Project area includes a mix of cars, wagons, coasters, buses, trucks, tractors and trailers, low bed long vehicles, military vehicles, container carrying vehicles and large wheat carriers. In addition, the KKH is used by motor cycles, a limited number of bicycles, herds of sheep, goats, cows and mules.

During construction, it is estimated that about 200 to 300 construction trucks per day will use KKH to supply cement and other construction materials to site. These additional

construction vehicles on KKH may cause traffic congestion and safety hazards. The transport along the access roads through Komila Bazar is also expected to create traffic nuisance and safety hazards.

6.7.2 Influx of In-Migrants and Related Social Issues

The influx of construction workers to the Project site may place considerable pressure on the traditional Kohistani socio-cultural system as well as resources. Although the volume and number of in-migrants is difficult to accurately determine at this time, a possible scenario suggests that for every job created by the Project, at least an additional 1 to 2 jobs will be created as a snow-ball effect to support and sustain the growing population and businesses in the Project area. Table 6.8 presents a conservative estimate of the number of in-migrants and their followers, including traders and entrepreneurs.

Table 6.7: Estimates of In-Migrants at Different Stage of Project Construction

Stage	Types of in-migrant	Number (Direct)	Number (Indirect)	Total
Pre-construction	All types of planning, design, survey, investigations, and construction-related temporary migrants, family/followers	500	400	900
Construction	Construction workers, consultants, and management staff, traders/entrepreneurs, family/followers	3000	4000	7000
Post-construction	O&M/technical advisory staff, family, support staff	1375	1500	2875

As a result of potential in-migrants and construction workers, and their families, followers and service providers,, Dasu will have at least doubled the population during construction time, putting considerable pressure on existing resources – for example, housing/shelter, land, water, power, food supplies, jobs, and transport/infrastructure – on households and communities, threatening their general well-being and welfare of the community..

6.7.3 Health, Safety and Hygiene

Construction sites are likely to have health and safety impacts. There will be potential for diseases to be transmitted, exacerbated by inadequate health and safety practices. There will be an increased risk of work crews spreading sexually transmitted diseases such as HIV/AIDS. Camp sites for construction workers are locations that have significant impacts such as health and safety hazards on construction workers and nearby communities. The potential implications associated with housing of the immigrant workforce include generation of solid waste, adverse water quality impacts arising from discharge of partially treated sewage and refuse, public health impacts through the possible introduction of diseases not prevalent in the surrounding areas, and promotion of disease vector habitats within the temporary housing areas.

6.7.4 Impacts on Fishery

Downstream impact of the Dasu Hydro Project is limited to first 4.4 km, between damsite and tailrace, due to reduced flows during low flow season. A flow of 20 cumecs will be released as environmental flow in this section. Below tailrace, the instantaneous inflow to the dam will be equal to the instantaneous outflow from the dam. Hence any impacts further to the downstream of tailrace are not expected.

Generally hydropower projects will impact the downstream fish and thereby fisheries due to changes in water flow, water quality and blockage of fish migration. But these types of impacts are very limited for DHP due to the following reasons

- DHP is a run-of-river Project with a continuous flow of water to the downstream, and hence it will not alter any downstream flow
- Due to limited storage area of the reservoir (2,85 ha) and high water inflows (up to 7,000 cumecs), the water retention time in the reservoir is very low and hence impacts associated with altered water quality (dissolved oxygen and temperature) will not occur in downstream of DHP
- Very fine sediments will continue to pass through dam site. Further sedimentation will be brought to Indus through tributaries located on the downstream of the dam.
- There is no migratory fish on the Indus in the dam site. The snow carp (or snow trout), the main fish species of the project area breeds, spawns and migrates within the tributaries – not in the main Indus.

However, during construction the quality in Indus would be affected due to large scale construction activities in the river, which could further affect the fish habitat and fish. These impacts will be mitigated by the implementation of project's environmental management plans.

7 RESETTLEMENT AND LIVELIHOOD RESTORATION

7.1 WORLD BANK OP 4.12 – INVOLUNTARY RESETTLEMENT

As the lead financier of the Project, the WB Safeguard policy OP 4.12 applies to this project. The Policy covers all affected persons, regardless of the number of people affected, the severity of impact and legality of land holding. The policy requires particular attention to be given to the needs of vulnerable groups especially those below the poverty line, the landless, the elderly, women and children, indigenous groups, ethnic minorities, orphans, and other disadvantaged persons. In view of the above, there are obviously large gaps between the Land Acquisition Act of 1894 and World Bank OP 4.12. These gaps are in the areas of minimizing impacts, identification of affected persons, (titled vs. non-titled), consultation and disclosure of project impacts; compensation at market or replacement rate, and assistance for relocation/resettlement and income and livelihood restoration. However, these gaps – more in view of the Project location where land titles and records are not available and land occupancy/titles are customarily recognized along tribal lines – are addressed adequately by the harmonization and gap analysis leading to the establishment of the Project Resettlement Policy and entitlement matrix. The adopted policy and the extent of safeguard planning and coverage fully comply with World Bank operational guidelines and standards.

7.2 RESETTLEMENT ACTION PLAN

7.2.1 Coverage and Objectives

The RAP has been prepared to address and mitigate the impacts of the various components (e.g., Dam, Reservoir, KKH and Access Road) of the Project. The main objective of the RAP has been to (i) identify impacts and (ii) plan measures to mitigate adverse impacts resulting from loss of land and other assets. The RAP is based on the findings of the inventory and census surveys, socio-economic survey, field visits, meetings and consultations with various project-affected persons in the project area. The RAP presents (a) type and extent of loss of assets including land and structures and trees; (b) principles and legal framework applicable for mitigation of these losses; (c) the entitlement matrix, (d) relocation strategies and plan, including provisions for livelihoods; and (e) resettlement and rehabilitation budget; and (f) institutional framework for the implementation of the plan, including monitoring and evaluation. It has been design as a

“development” plan. Therefore, the overall objectives of the RAP are to restore and/or improve the standards of the affected persons from pre-project level.

7.2.2 Eligibility for Compensation and Assistance

All affected persons will be entitled to compensation and resettlement assistance based on severity of impacts and ownership status. Lack of legal documents for customary rights of occupancy/titles shall not affect eligibility for compensation and assistance. Entitlements of PAPs are considered in two broad categories: (i) entitlements for loss of physical property including houses, land and trees; and (ii) entitlements for loss of income. In the first case PAPs will receive the following compensation:

- assistance in cash amounting to the negotiated value which is the assessed and agreed value of land at the time of dispossession and would include cost of titling;
- replacement value of structures together with a moving allowance;
- market value of trees, crops and perennials;
- cash grants and resettlement assistance such as shifting and reconstruction allowance, compensation for loss of workdays/income due to dislocation
- additional cash assistance for relocation and house reconstruction for socio-economically vulnerable households such as female-headed households, households below poverty line, households headed by differently-abled and those losing more than 10% of their total income as a result of the Project.

7.2.3 Entitlement Matrix

The unit of entitlement will be entitled persons (EP) or household. PAPs identified as vulnerable will be eligible for additional assistance and all PAPs will be permitted to take away the salvaged materials free of cost. Entitlements for different categories of losses and their corresponding entitlements are presented in Table 7.1. These include both cash and non-cash or in-kind – for instance, development of resettlement site by the projects, employment in the project construction, etc. – compensation and assistance. Eligibility of PAPs will be governed by the entitlement matrix, cut-off dates and other conditions as per RAP implementation plan/guidelines.

Table 7.1: Eligibility and Entitlement Matrix

Loss Item 1: Loss of Agricultural Land Used in Terrace Cultivation			
Unit of Entitlement	Entitlements	Application Guidelines	Additional Services
Owner(s) of land identified by District Collector through Land Acquisition Survey	1. Negotiated Value (NV) of agricultural land agreed between PAPs and the District Collector 2. Cultivable Plot (1/2 kanal) of land (if available and technically feasible for development) near resettlement site in the case of the families without residual land. 3. Dislocation Allowance of PKR 500/- (Five hundred) per kanal but the total amount will not exceed PKR 20,000/- (Twenty thousand)	1. NV will be computed by the District Collector based on the Unit Rates agreed upon at a Jirga comprising Village Committee (VC) and District Collector. The Project through District Collector will pay cash compensation through crossed cheque with assistance from PRO to confirm identity of owner.	Identified owners will be assisted by the Director-SRU to prepare legal documents in support of their ownership.
Implementation Issues:			
1. Landowners will be informed of the details of the land acquisition and compensation process,			

resettlement package and payment procedure.

1. The VCs were established by the Additional Assistant Commissioner (AAC) with recommendations of the village Malik in every affected village
2. The Unit Rates to be used in computing Negotiated Value (NV) for agricultural land will be determined at a Jirga including the Village Committee (VC), District Collector or representative, (called the Price Evaluation Committee, duly formed and notified by District Collector). The valuation process will take into consideration the rates adopted by a recent hydropower project in Kohistan as the basis for negotiation.
3. The community in the project has derived the right to use homestead, agricultural and other land, by virtue of traditional land tenure under their traditional laws and customs. Therefore, formal land ownership documents as title deeds and cadastral maps have not been prepared for land in this area. Therefore, the Land acquisition survey is conducted by the District Collector to establish land ownership and boundaries as these details are required to issue notice under Section 4 of LAA 1894.

Loss Item 2: Loss of Homestead and Commercial Land

Unit of Entitlement	Entitlements	Application Guidelines	Additional Services
Owner(s) identified by District Collector through Land Acquisition Survey	<ol style="list-style-type: none"> 1. Negotiated Value (NV) of land. 2. Dislocation Allowance @ PKR 750/- (Seven hundred and fifty) per kanal but the total amount will not exceed PKR 5,000/- (Five thousand). 3. Affected owners will be entitled to a plot either small (5 <i>Marlas</i>) or large (10 <i>Marlas</i>) based on their homestead plot size in the "original" village only in case of sites developed through land acquisition. 4. Provision of basic infrastructures at new resettlement area such as access road, drinking water supply and sanitation, schools, electricity (if available at homestead), mosque, health facility and commercial area free of cost. 	<ol style="list-style-type: none"> 1. NV will be computed by the District Collector based on the Unit Rates agreed upon at a Jirga comprising VC, and District Collector; 2. Project through District Collector will pay for the land. 3. Project is liable to provide basic infrastructures at new resettlement area such as access road, drinking water and sanitation system. Agriculture water supply will be provided if land for agriculture is available near resettlement site. Current electricity systems will be shifted to the resettlement villages; 4. Affected owners will be entitled to a plot in new resettlement site developed by project either small (5 <i>Marlas</i>) or large (10 <i>Marlas</i>) based on their homestead plot size in the "original" village. These plots will be given free of cost if land for resettlement is provided by the resettling community free of cost and on 	Identified owners will be assisted by the Project to prepare legal documents in support of their ownership.

		<p>subsidize rate in case land for resettlement site has to be acquired by the Project</p> <p>5. The affected households moving and settling outside the project resettled developed site will be eligible of getting a special allowance for relocation @ Rs. 50,000/- in addition to their actual compensation. These effectee would not be eligible to have a developed plot in resettled.</p> <p>6. Owners will be allowed to take away all salvageable materials free of cost.</p>	
Implementation Issues:			
<p>1. Consultations with Project Affected Persons (PAPs) revealed that most of them did not want to move away from the valley where their present abodes are located and preferred to relocate at a higher elevation within the same valley. This is mainly due to their seasonal migration to different elevations of the valley where they have houses at these different elevations as described in the RAP.</p> <p>2. PAPs will be informed of the details of the compensation policy, resettlement package and payment procedure.</p> <p>3. NV will be determined and approved for the project following the procedure as stated under Loss Item 1 above.</p> <p>4. Land titling will be completed through the land acquisition survey conducted by the District Collector before issuance of notice under section 4.</p>			
Loss Item 3: Loss of Communal Property and Resources			
Unit of Entitlement	Entitlements	Application Guidelines	Additional Services
<p>1. VC for communal property;</p> <p>2. All villagers losing access to common land areas for pasture and fuel wood</p>	<p>1. Negotiated Value (NV) of land will be paid to the VC</p> <p>2. A plot in community-based resettlement site for each communal property as schools, mosque, burial ground, health center, community center etc.</p> <p>3. The project will construct the structures for common properties in the project-managed</p>	<p>1. NV will be computed by the District Collector based on the Unit Rates agreed upon at a Jirga comprising VC, and District Collector,</p> <p>2. Project/District Collector will pay for the land of common properties.</p> <p>3. The VC will construct the common properties at each resettlement site with planning inputs and monitoring by Project of each</p>	<p>VC will be assisted by the Director-SRU to organize legal documents in support of the compensation payments for the common properties. Social and Resettlement Unit with guidance from an experienced organization in this field will assist and guide the</p>

	resettlement sites selected by the PAPs and the sitting of the common properties will be decided by the VC.	resettlement site.	community in utilizing the common land area sustainably.
Implementation Issues:			
1. NV will be determined and approved for the project following the procedure as stated under Loss Item 1. 2. The VC will be responsible for the relocation of community property sites. 3.			
Loss Item 4: Loss of Residential Structures			
Unit of Entitlement	Entitlements	Application Guidelines	Additional Services
Owner(s) of the structures identified by District Collector through Land Acquisition Survey	1. Replacement Value (RV) of residential structure. 2. Transfer/relocation Grant @ PKR 100/- (One hundred) per square meter of affected structure. 3. Reconstruction Grant @ PKR 250/- (Two hundred and fifty) per square meter of affected structure. 4. Special Assistance of one-time payment of PKR 5000/- (Five thousand) for each female, disabled, elderly headed and very poor households. 5. Owner will be allowed to take away all salvageable materials free of cost. 6. The households moving and settling outside the project district will be eligible of getting a special allowance for relocation @ Rs. 50,000/- in addition to their actual compensation and other allowances.	1. Applicable to all structures located within the acquisition areas. 2. District Collector with expertise from Communication and Works Department will determine the RV based on the Unit Rate agreed at the Jirga will compute the RV. When necessary, PRO will be employed to verify structures eligible for RV and other assistance. 3. Project/PMU will pay for structures through District Collector; 4. The Project will provide other resettlement benefits directly with assistance from Social and Resettlement Unit; 5. Owner will be allowed to take away all salvageable materials free of cost 6. The affected households moving and settling outside the project resettled developed site will be eligible of getting a special allowance for relocation @ Rs. 50,000/- in addition to their actual compensation. These effectee would not be eligible to have a developed plot in	Assistance in relocation and reconstruction be provided by the Project Resettlement Unit.

		resettled.	
Implementation Issues:			
<ol style="list-style-type: none"> 1. Land Acquisition Survey conducted by District Collector and Detailed Measurement Survey by Communication and Works Department (C&W) will assess and record details such as floor area and category of structure of to be demolished. 2. The Unit Rate for different types of residential structures will be computed by the Executive Engineer, C&W and approved at a Jirga comprising representatives from all affected villages and District Collector or representative; 3. Compensation must be paid before PAPs dismantles and removes the structures as per civil works requirement at new site of resettlement. 4. The date of service of notice under section 4 and/or Inventory Census will be the cut-off date for all structures to be removed. 			
Loss Item 5: Loss of Commercial Structures			
Unit of Entitlement	Entitlements	Application Guidelines	Additional Services
Owners of commercial structures identified by District Collector through Land Acquisition Survey	<ol style="list-style-type: none"> 1. RV of commercial structures. 2. Transfer Grant @ PKR 100/-(One hundred) per square meter of affected structure. 3. Reconstruction Grant @ PKR 500/-(Five hundred) per square meter of affected structure. 4. Owner will be allowed to take all salvageable materials back free of cost. 	<ol style="list-style-type: none"> 1. Applicable to all structures located within the project affected area at cut-off date. 2. Jirga of affected villagers and District Collector with expertise from C&W will determine the RV. 3. When necessary, Director-SRU will verify and record structures eligible for RV and other assistance. 4. District Collector will pay for structure. 5. The Project will provide other resettlement benefits with assistance from SRU. 	Assistance in relocation and re-construction be provided by the project.
Implementation Issues:			
<ol style="list-style-type: none"> 1. Land Acquisition Survey conducted by District Collector and Detailed Measurement Survey by Communication and Works Department (C&W) will assess and record details such as floor area and category of structure of to be demolished. 2. Replacement value (RV) of structure will be determined and approved in the process as stated in Loss Item 4. 3. Compensation must be paid before dismantling and removing the structures as per civil works requirement and new site of resettlement. 4. The cut-off date for titled owners and socially recognized owners as stated in Loss Item 4. 			
Loss Item 6: Loss of Physical Cultural Resources			
Unit of Entitlement	Entitlements	Application Guidelines	Additional Services
Department of Archaeology and Museum (DOAM) of KPK, the Legal Custodian of the archaeological resources of the project affected area.	<ol style="list-style-type: none"> 1. Cost of dismantling, moving and reconstruction of the 400 year Mosque at Seer Gayal. 2. Cost of land to relocate the Seer Gayal Mosque 3. Cost of protecting the submerged graves 	<ol style="list-style-type: none"> 1. Applicable to the structures identified in the PCR Plan 2. Cost of land will be paid to VC if Seer Gayal would be resettled in community land, otherwise cost of communal land will not be paid. 	The Project will support the DOAM in procurement and protection of rock carvings (if any) at Shatial.

	with mud plaster. 4. No rock carving would be affected by the project .	3. The Project will support local community in performing religious ceremonies before covering the graveyards with mud plaster as agreed by local community well before filling of reservoir.	
--	--	---	--

Implementation Issues

1. The project consultant team has identified and assessed the cost of PCR to be conserved /relocated.
2. Cost of conservation and/or relocation will be paid to the Department of Archaeology and Museum (DOAM) of KPK before dam construction and the DOAM is responsible for implementation before inundation.

Loss Item 7: Loss of Timber and Fruit Bearing Trees

Unit of Entitlement	Entitlements	Application Guidelines	Additional Services
1. Owner(s) identified by District Collector through Land Acquisition Survey 2. Socially recognized (by Malik/Mullah and VC) owners of trees grown on public or other land, as identified by Census and verified by Land Acquisition Survey.	1. RV of Timber trees. 2. Fruit-bearing trees: if the tree is at or near fruit-bearing stage, the estimated current market values of the fruit produce for 3 seasons. 3. Owners will be allowed to fell trees and take the timber, free of cost.	1. Applicable to all trees and plants located in acquisition area at cut-off dates. 2. District Collector/Project will pay applicable compensation for trees/plants. 3. District Collector with assistance from Department of Forestry and Department of Agriculture will recommend RV of trees and fruits. 4. Development of new nurseries facilities for fruit and non-fruit trees in new resettlement sites 5. Re-plantation of 5 trees per affected tree in the project area	SRU to explain RAP policies regarding compensation for the trees of different categories and size and make the Entitled Persons (EPs) aware that they could take the timber and fruits free of cost.

Implementation Issues:

1. Replacement value (RV) of timber and fruit bearing trees determined on rate basis negotiated by District Collector and with the affected Community/Jiga will be paid. In addition if the tree is at or near fruit-bearing stage, the estimated current market values of the fruit produce for 3 seasons; and
2. The SRU will provide guidance in re-plantation and post-plantation care programs under Environmental Management Action Plan (EMAP).

Loss Item 8: Loss of Standing Crops

Unit of Entitlement	Entitlements	Application Guidelines	Additional Services
Cultivators identified by District Collector through Land Acquisition Survey	1. RV of standing crops. 2. Owners will be allowed to harvest of standing crops prior to	1. Applicable for all crops standing on land within the acquisition area at the time of	SRU will assist EPs in the process of claiming compensation from

	inundation.	dispossession. 2. District Collector with assistance from Director-SRU will pay for crops. 3. District Collector with assistance from Department of Agriculture will recommend RV of crops at harvest. 4. Crops grown after dispossession will not be paid any compensation	District Collector office for preparing necessary documents.
--	-------------	--	--

Implementation Issues:

RV of crops will be recommended by District Collector/Department of Agriculture (based on data obtained from District Agriculture Extension Office, Dasu) for those identified through Land Acquisition Survey conducted by District Collector.

Loss Item 9: Loss of Leased/Mortgaged Land

Unit of Entitlement	Entitlements	Application Guidelines	Additional Services
1. Identified recognized lessee or sharecropper, with informal tenancy arrangements, including socially recognized verbal agreements.	1. RV of crops. 2. Outstanding lease money back to the lessee by the owner as per agreement. 3. Dislocation allowance @ PKR 1500/-per kanal for actual cultivator to cover the income loss from the land	1. With customary tenancy agreements, including socially-recognized verbal agreements, owner will receive compensation payment from District Collector. The owner will pay the outstanding liabilities to the lessee/mortgagee under the conditions that: (i) all contractual liabilities are already paid up; (ii) if not, the legal owner will get the residual payment after all liabilities are paid up. 2. District Collector will ensure the payment of RV of crops to the cultivator. 3. Dislocation Allowance will be paid to the actual cultivator of the acquired land by District Collector/Project with assistance from SRU.	1. SRU will assist in ensuring that the lessee receives all eligible payments. 2. SRU will facilitate the refund of outstanding lease money by the owner to the lessees.

Implementation Issues:

1. Land Acquisition Survey conducted by District Collector will identify each land owner and any persons who presently have interest in the acquired land from formal/informal agreement.
2. Any disputes over status of present interest in the land will be resolved through grievance redress procedure. Once resolved, SRU will assist in processing payments of all outstanding liabilities on the land to the appropriate persons.
3. RV of crops will be determined by District Collector/Department of Agriculture (based on data obtained from District Agriculture Office, Dasu).
4. Dislocation Allowance to cover loss of income will be paid to the tenant as per project-specific policy provisions.

Loss Item 10: Loss of Income from Displaced Commercial Premises			
Unit of Entitlement	Entitlements	Application Guidelines	Additional Services
Any proprietor or businessman or artisan operating in premises, at the time of issuance of Notice under section 4.	<ol style="list-style-type: none"> 1. Grant for Loss of Business @ 10% of District Collector's payment for the structure. 2. One time Moving Assistance of PKR 5000/-(Five thousand) for tenants. 3. Affected businesses to be relocated to the new market area to be established in nearby resettlement site or along KKH. 	<ol style="list-style-type: none"> 1. Business owners will be paid the entitlements after award of compensation by District Collector to the owner of premises. 2. The Project will directly pay the entitlement to the eligible affected persons with assistance from SRU. 	EPs will be brought under income generation program.
Implementation Issues:			
<ol style="list-style-type: none"> 1. Primary eligibility to be based on businessmen identified by DHC Census and verified by Land Tenure Survey conducted by District Collector. 2. All the business operators will be entitled for grant against loss of business and relocation to the new market area The income-generating program will be implemented by the SRU with assistance from an organization experienced in rehabilitation and livelihood generation activities of resettled persons in similar hydropower projects in the area. 			
Loss Item 11: Temporary loss of income (wage earners in agriculture, commerce & small business and industry)			
Unit of Entitlement	Entitlements	Application Guidelines	Additional Services
Regular wage earners employed in businesses commerce & industry in the affected area.	<ol style="list-style-type: none"> 1. Grant to cover temporary loss of regular wage income @ PKR 200/-(Two hundred) per day for only 90 days PKR 18000/-(Eighteen thousand only) for farm labor; PKR 200/-(Two hundred) per day for only 90 days PKR 18000/-(Eighteen thousand only) for <i>Gujars</i> employed to look after livestock; PKR 250/- (Two hundred and fifty) per day for only 90 days PKR 22500/-(Twenty two thousand five hundred only); for wage worker at hotel/shops and restaurant Rs.300 	<ol style="list-style-type: none"> 1. EP must have been an employee of landowner or business located in the acquired lands for at least twelve months, as identified by the Census conducted by the Consultants (DHC Census). 2. The resettlement benefits will be paid by Project with assistance from SRU. 	<ol style="list-style-type: none"> 1. EPs will be brought under income and livelihood restoration programs to be implemented under RAP, and training programs, including the current technical and vocational training programs sponsored by the Project. 2. Involvement of trained EPs in construction work. 3. Involvement of trained EPs in tree plantation and social forestation programs under EMAP.

	(Three hundred) per day for 90 days PKR 27000/-(Two thousand only); 2. A one-time grant of PKR 150,000/= (one hundred and fifty thousand) for <i>Soniwals</i> (identified during survey) <i>per</i> households engaged in gold extraction in the project affected area;		
Implementation Issues:			
Primary eligibility to be based on wage earners identified by the DHC Census and further verified by Director-SRU. Further claims and grievances, if any, will be settled by the grievance redress committee and Director-SRU.			
Loss Item 12: Loss of Income from Rented-out and Access to rented-in residential/ commercial premises			
Unit of Entitlement	Entitlements	Application Guidelines	Additional Services
1. Owner of the rented-out premises as identified by Census prepared by DHC and verified by District Collector/ Director-SRU. 2. Household/person rented-in any such structure as identified by Census prepared by DHC and verified by District Collector/ Director-SRU.	One time allowance of loss of income from rent in and rent-out be paid as PKR 10,000./-(Ten thousand) to owner and renter	1. Each renter of affected premises will be entitled for the dislocation allowance. The owners of rented out premises will be entitled for dislocation allowance for each unit of premises rented out to separate families or persons. 2. Dislocation Allowance will be paid by Project with assistance from PRO/SRU.	1. EPs will be brought under income and livelihood restoration program to be implemented under RAP.
Implementation Issues:			
DHC Census and verification by District Collector/Director-SRU will establish the owner and renter of the residential and commercial premises.			
Loss Item 13: Households losing more than 10% of their income (from agriculture or business) due to the project			
Unit of Entitlement	Entitlements	Application Guidelines	Additional Services
Persons losing more than 10% of their income from all sources as identified by Census prepared by DHC and verified by District Collector /Director-SRU .	1. One time Dislocation Allowance @ PKR 10,000/- (Ten thousand) per household.	1.The one time Dislocation Allowance will be paid by Project with assistance from Director-SRU	1. EPs will be brought under income and livelihood restoration program. 2. EPs will also be included in the

			<p>current project sponsored vocational training program training EPs for employment in project construction activities.</p> <p>3. Involvement of trained EPs in Project construction work.</p> <p>4. Involvement of trained EPs in tree plantation and social forestations programs.</p>
--	--	--	---

Implementation Issues:

1. Loss of income had been assessed as per actual loss of productive resources (land and businesses) by the project and the total income of the affected households from all sources through Census of all affected households .
2. PRO will verify the percentage of loss comparing the actual loss and the total income from all sources of the affected households.

Loss Item 14: Loss of Livelihood (Non-cash Entitlement)

Unit of Entitlement	Entitlements	Application Guidelines	Additional Services
Households/persons affected by loss of livelihood	<ol style="list-style-type: none"> 1. Free Vocational Training will be provided to the people of affected area. 2. Free horticulture training will be provided to the people of affected area. 3. Training in fish hatchery operations and sustainable fishery will be provided to the people of affected area. 4. 4.Jobs in the project will be provided to the people of affected area 5. 5. Inclusion in area development programs implemented with ADF 	<ol style="list-style-type: none"> 1. A pro-active program to this end has already been started by WAPDA: local youths are receiving a six-month vocational training program in various lines of work to prepare them for guaranteed jobs in the project construction work or elsewhere. 2. Priority will be given to affected households for working in project construction activities. 	<ol style="list-style-type: none"> 1.PAPs will also be included in the current project sponsored vocational training program 2.training PAPs for employment in project construction activities.

Implementation Issues: Area development programs including sustainable income generation activities and training, micro credit and entrepreneurial training etc. will be planned and implemented by Assistant Director, Training and Livelihood, in the long term, with funding from Area Development Fund.

Loss Item 15: Public Structures such as Hospital/Dispensaries, School, etc

Unit of Entitlement	Entitlements	Application Guidelines	Additional
---------------------	--------------	------------------------	------------

			Services
Concerned Department	Replacement of affected structures	WAPDA and concerned department with the help of District Collector will be responsible for the replacement of the affected public structures at appropriate site with the financial assistance of the project.	After the construction of the affected public structure, the said structure will be handed over to the concerned department who will be responsible for the further maintenance and operation.
Implementation Issues:			
Loss Item 16: Unforeseen Adverse Impacts			
Unit of Entitlement	Entitlements	Application Guidelines	Additional Services
Households/persons affected by any unforeseen impact identified during RAP implementation	Entitlements will be determined as per the resettlement policy framework	The unforeseen impacts will be identified through special survey by the SRU. The entitlements will be approved by PMU/WAPDA and concurred by the World Bank	APs affected by unforeseen impacts as additional relocation due to blasting and dust, construction associated activities will be accommodated by this compensation by SRU with facilitation by CE_Dy Project director-Safeguards
Implementation Issues:			
The unforeseen impacts and affected persons will be identified with due care as per policy framework and proposed to WAPDA and World Bank for approval including details as quantity of losses, their owners and the entitlements.			

7.3 RELOCATION IN HIGHER ELEVATIONS

Since the affected communities are used to seasonal migration up and down the mountains and such migration is tied to their livelihoods and cultures, relocation and resettlement of affected communities was prominent in the early *jirga* meetings. The affected communities and their elders/*maliks* expressed their preferences to relocate to higher elevations within the same mountain/valley on their residual lands with all assistance from WAPDA, including site development with basic civic amenities. The affected villages are currently located within 500m to 1,000m above the river bank on both sides of the Indus and would be affected largely by the dam reservoir and by camp sites, housing colonies and relocation of the KKH at 1000m.

Relocation and resettlement across the river or downstream is also not a possible option as every tribe or sub-tribe considers them as “very different” than others ethnically, socially and culturally. For the same reason, relocation away from their existing mountains to any significant distance to project-sponsored “model village” or urban settlement will not work in the case of these “tribal” villagers. So, relocation to higher elevation to places of their own choices was considered the best solution. This form of

Community-based relocation will enable the affected families to remain together for mutual self-help. Since the KKH is also being relocated above the 1000m level on the left bank, these relocated communities will have their traditional access to regular markets and schools and hospitals in Dasu area.

7.4 PREFERRED OPTIONS FOR RELOCATION

Given the past experience of resettlement in general and the Dasu project context in particular, the Project has adopted the following strategies and options for resettlement of the affected households and communities (Table 7.2). The community preferred site was well received (90%) and considered practical by the *jirgas* as well as at stakeholder workshops. Only a limited number of affected households (10%) want to move on their own to other places in Kohistan and as far as Mansehra and Abbottabad mentioned about their kinship links in those places and/or availability of cheaper land for resettlement, including more job prospects in the cities. This may be a feasible option on household basis. These choices and responses will be further confirmed at implementation stages. This will be a dynamic process. While maintaining the main thrust, Dasu Management and team will adopt a flexible and open attitude towards people's requests and continue to explore potential options. But all resettlement options, requests and agreement will be subject to careful technical assessment, review, consultation and agreement with the concerned communities.

Table 7.2: Resettlement Strategies and Options

Option	Strategies	%
Community-based Relocation to Sites in Upper Elevation	<ul style="list-style-type: none"> Relocation to sites of their own choices in higher elevations Community decision-making with regard to site layout and civic amenities to be established Site-specific Relocation Planning Committee consisting of the <i>malik</i>, representatives of affected families, CE-DPD/Safeguards Site and services development at project costs Free plots to each affected families of the concerned community if land is community land. If land for resettlement would be acquired by project then developed plot will be given at subsidized rate. Shifting and reconstruction grants as per the entitlement matrix 	90%
Self-Managed Relocation to "Down country" or in Kohistan other than project developed resettlement site	<ul style="list-style-type: none"> Self-managed individual and/or families to identify destination and or site downstream and cities like Mansehra and Abbottabad districts Project will pay all eligible compensation and benefits prior to relocation Additional 15% of the total compensation for self-managed resettled households. CE-DPD/Safeguards to maintain the database for self-managed resettled households No plot will be provided to such resettlers 	10%

7.4.1 Checklist of Existing Amenities in the Villages

Two checklists were administered to (i) assess the existing civic amenities in the affected villages and (ii) feasibility of the proposed site in higher elevations. In all, 27 of the 34 villages have been covered. Decisions for the rest were not confirmed by the village elders and *maliks* at this writing. As evident in Table 7.3, the affected villages have already a range of civic amenities in their villages. Close to two-thirds of the villages

have proper access roads and drinking water supply. A large majority of the villages have power and irrigation systems. Nearly every village has a mosque. Only about one-third villages have schools. Two-thirds villages have latrines. There are three BHU in the project affected villages.

Table 7.3: Civic Amenities in the Existing Villages

Available Civic Amenities	Number of Villages	%
Access road from existing KKH	16	60
Internal road in the village	8	30
Drinking water supply	18	67
Irrigation water for terrace cultivation	21	78
Power supply (by local mini hydel)	21	78
Schools for boys and girls	11	41
Mosque	22	82
Playground	2	7
Latrine	20	74
Community graveyard	17	67
Basic Health Unit/Dispensary	3	11
Access to market	12	44
Community Centers	3	11

The project will rebuild all existing amenities that are already there in the village. Additional amenities will be developed where needed so that people in their new relocated sites are better served and assisted with needed social infrastructures. All relocated villages will have access road to and from the resettled sites from relocated KKH and/or other improved or new road networks.

7.4.2 Resettlement Site, Lay out Design and Development

As stated earlier all the affected communities were consulted on their preferences for relocation. The Social Team visited the proposed sites along with village elders and *maliks* for initial assessment about the feasibility of the sites. Initial screening of sites involved (i) access to the sites for construction purposes; (ii) level or altitudes; (iii) availability of land for site development; and (iv) distance from the relocated KKH, (v) water sources and quantities, vi) slope degree, vii) avalanche prone risks etc. Detailed information is available on 27 sites, which will be further assessed by a technical team consisting of engineers, District Collector officer, CE-DPD/Safeguards along with village elders and *maliks* prior to preparing the specific plans for resettlement site development. Figure 7.1 presents the location of the existing villages and the potential sites selected by the affected village elders and *maliks*.

A sample layout plan for a resettlement site is presented in Figure 7.2 It includes all basic amenities, including plots for affected households. The layout plans and amenities and other facilities to be provided by the Project will be revealed to the affected households at disclosure consultations and their views and amendments will be incorporated in the final plans. The allocation of plots will be decided by the Village Committee (VC) and *malik/s* with the assistance of the Office of the CE-DPD/Safeguards will mobilize the AHs to build their own houses on the plot allocated by the VC using compensation payments received. The various steps and tasks in the development of sites and services are also discussed in Vol. 14 SRMP Implementation and Monitoring Plan.

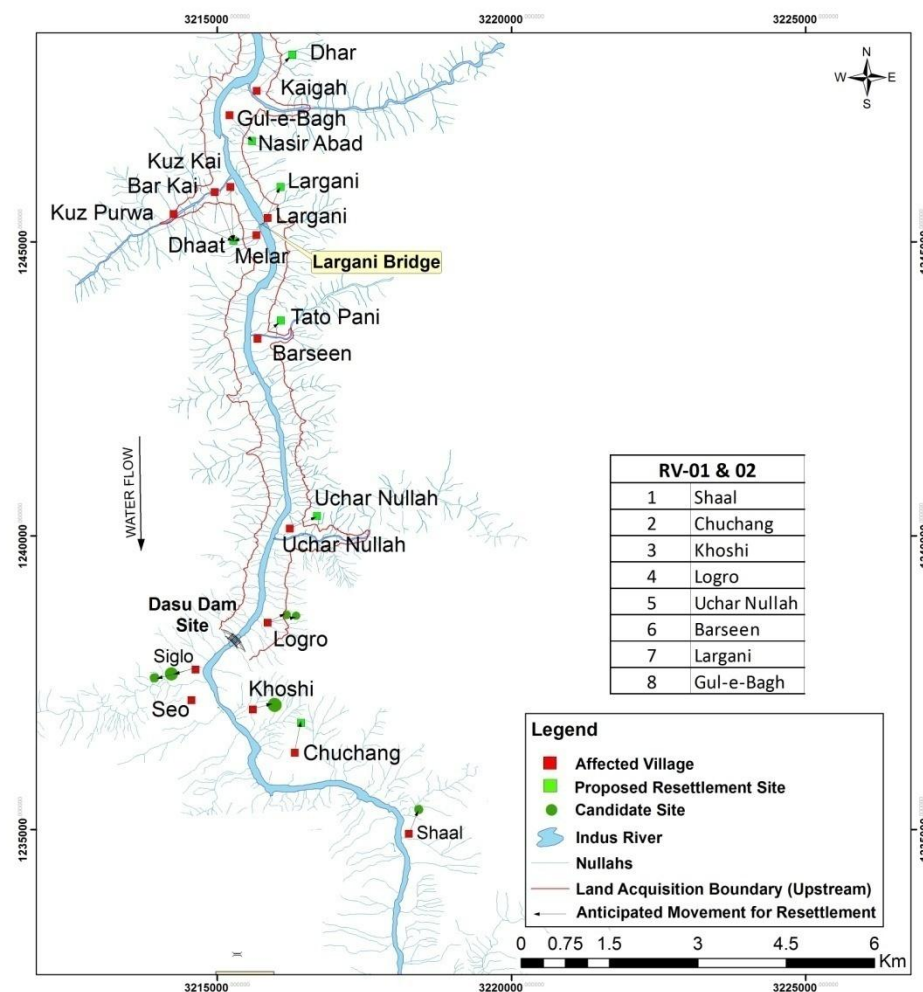


Figure 7.1: Mapping of Affected Villages and Preferred Location for Relocation

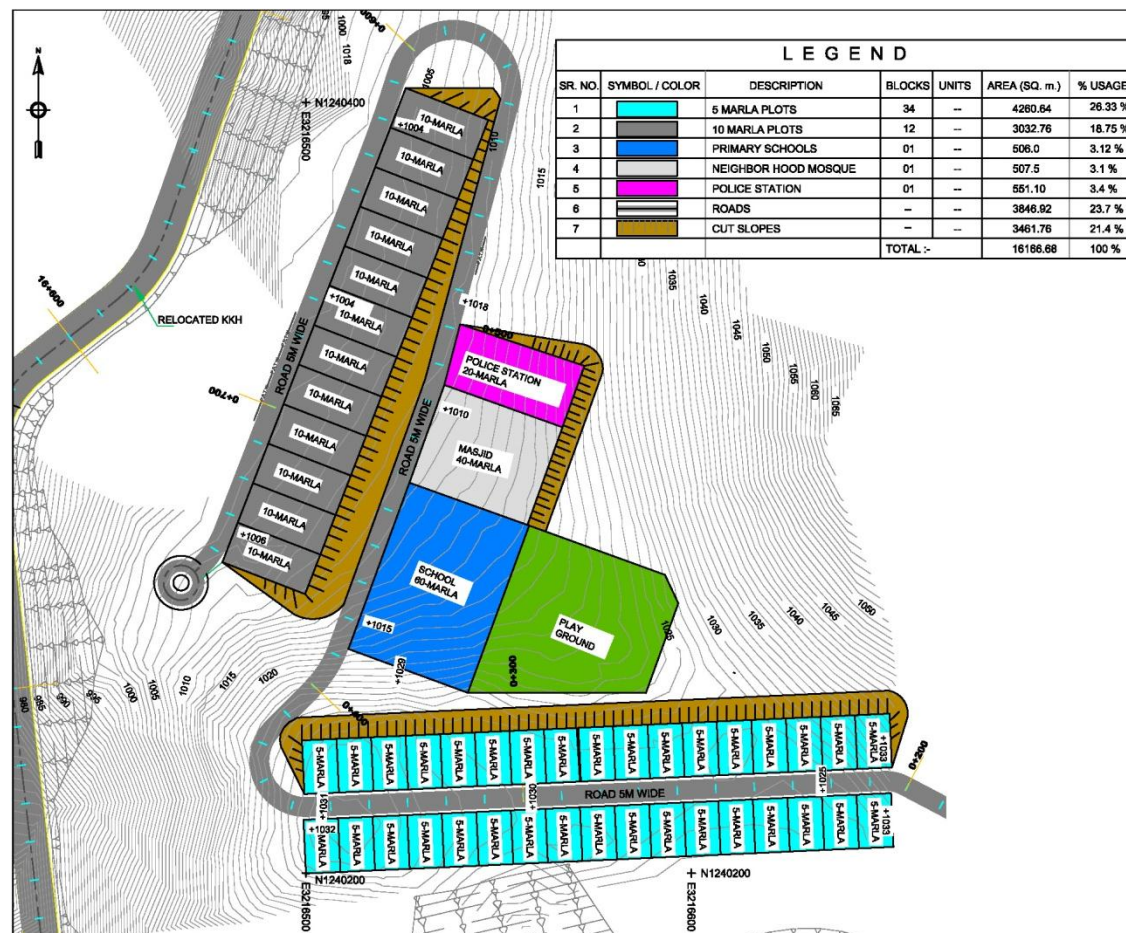


Figure 7.2: A Sample Lay out Plan for a Resettlement Site

A sample layout plan for a resettlement site is presented in Figure 7.2 It includes all basic amenities, including plots for affected households. The layout plans and amenities and other facilities to be provided by the Project will be revealed to the affected households at disclosure consultations and their views and amendments will be incorporated in the final plans. Since the community will be resettled on their own residual lands, there is no issue of “host” communities.

7.4.3 Social Preparation for Relocation and Resettlement

As a pre-construction activity and to help build community confidence for resettlement management, a Social Preparation Team (SPT) has been mobilized by WAPDA to the Project area. The team consists of a Team Leader, Consultation and Communication Specialist, Relocation Site Development Specialist, Livelihood Specialist, and Gender and Community Health Specialist. A key objective of this pre-construction social preparation phase is to strengthen the absorptive capacity of affected persons and communities, particularly those who are very marginal such as the affected tribal villagers in Dasu to mainstream development activities. The social preparation phase will help build their capacity over a period of time and help them to identify problems, constraints, and possible solutions. It will also provide the affected communities the confidence, motivation, and opportunity to address resettlement issues. Major tasks include:

- (i) Communications and information disclosure on project benefits, entitlements, relocation planning, livelihood and other measures, including time line for project construction
- (ii) Consultation with stakeholders, elders, and *jirga* members to build local confidence and capacity to deal with the transitions to new resettled communities.
- (iii) Coordination with Assist District Collector in the land acquisition processes, including *jirga* meetings at the village-level to confirm land titles, compensation valuation for land and other assets.
- (iv) Verification and updating of the safeguard database (social and environmental) for implementation purposes.
- (v) Coordination with local administration and WAPDA on the necessary details with regard to mitigation measures, implementation issues and management support for meetings and workshops required for capacity building
- (vi) Coordination with WAPDA Dasu Office to establish various local committees as per RAP and other reports for implementation of the safeguards plans.

7.5 GENDER PLANNING AND OTHER VULNERABLE GROUPS

In view of the context of the project site and a strong resistance against women uplift, it was a challenging task to design the GAP in a “conventional” sense. Mere mention of the word “women” was not viewed favorably. Therefore, GAP actions adopted are around “entry points” to work with women to eventually develop a conducive environment by involving men, particularly the *maliks*, *ulemas* and local influential persons in the process of sensitization and awareness building to make project benefits accessible to women. The GAP actions include:

- (i) Conduct meetings and workshops by involving the tribal leaders, *maliks*, *ulemas* and other local stakeholders to raise awareness about women rights and importance and; to make them aware that women can and should benefit from the project through participation in various income, education and health initiatives. .

- (ii) Gender sensitization and capacity building training for project staff, local government officials and other stakeholders to consider and address gender concerns. They should also be sensitized to the GAP approach to reach women for realization of project benefits.
- (iii) Dissemination of information about the project and its benefits in the project area populations, particularly women, children, youth and the elders.
- (iv) Ensure that the project benefits the women through establishing an effective health system with particular focus on women and children, differently-abled and elders.
- (v) Social preparation and socio-psychological support and counseling during relocation and resettlement and adjustment in new resettlement sites.
- (vi) Development of an education promotion plan for boys and girls in schools ensuring quality education in the project area.

The dedicated awareness and capacity building, together with information dissemination and community health and education programs will slowly and gradually give way to further intervention for livelihoods and employment generation activities.

Special attention has been given to other vulnerable groups.. Vulnerable groups are those likely to be particularly disadvantaged as a consequence of acquisition and resettlement, more prominently poor female-headed households, households headed by disabled and households under the absolute poverty line. The RAP has special provisions for vulnerable groups to meet their needs and support their means of subsistence: for example, (i) provisions for additional shifting allowance; and (ii) income and livelihood restoration allowance for loss of income or employment.

7.6 PHYSICAL CULTURAL RESOURCES

Screening of PCRs in the project areas has been conducted and a PCR Plan has been formulated for conservation of PCRs. The PCRs identified from the project area are the 400 year Mosque at Seer Gayal, Burial ground at Seer Gayal village, and Rock Carvings. PCR plans includes budget for conservation of the identified PCRs and also includes measures to protect PCRs that may be revealed during construction. PCR plan has provisions to relocate the mosque, cover the burial ground and if necessary conserve the rock carvings. Cost of land, dismantling, transporting and reconstruction are all included in the relocation of the mosque.

Department of Archaeology, the legal custodian of the archaeological resources will be responsible for protection and conservation of the PCRs identified from the project area. Consultation through *jirgas* and concurrence of Archaeologists will be required to identify the location for moving the mosque. Further details are available in EMAP Vol. 7 Physical Cultural resources Plan.

7.7 ASSESSMENT OF INCOME AND LIVELIHOOD RESTORATION

A comprehensive assessment of income and livelihood sources was undertaken at all elevation levels to assess the extent of impacts and losses by the affected households due to the dam project at the lower elevation (up to 1000m). On the basis of livelihood activities at different elevations, the valleys can be divided into four categories: (i) lower elevation (ii) middle elevation (iii) higher elevation and (iv) top hills (i.e., alpine pasture). These various elevations are inter-connected as resources for livelihood and animal herding for the mountain people and thus define their seasonal migration pattern – for example, from alpine pastures to summer to spring, and finally winter residence near the riverbank (700-1500m elevation level). Table 7.4 provides an illustration of the migration duration and the associated socio-economic and resource characteristics at different elevations.

Table 7.4: Livelihood Activities and Resources at Various Elevations

Elevations (meters above sea level)		Socio-economic and Resources Characteristics	Duration
Alpine pasture	2500-3000	Animal herds with small sheds, timber, collection of medicinal plants & mushroom	4 months (June -October)
Higher	2000-2500	Summer residents cum cropping zone (White Maize & Sorghum) ,Fruit trees & Business	5 months (April -August)
Middle	1500-2000	Summer & winter residents cum cropping Zone (White Maize), Fruit trees, Business, Govt. & Private jobs	6 months (May-October)
Lower	Less than 1500	Winter & summer residential houses, agriculture land, grazing land & fodder (Oak trees, Wild Olive and other bushes)	6 months (October to March)
	1000	Winter & summer residential houses , agriculture land, grazing land & Fodder (Oak trees, Wild Olive and other bushes)	6 months (October to March)
	800	Winter & summer residential Houses , Agriculture land, grazing land & Fodder (Oak trees, Wild Olive and other bushes) fuel wood tolls and commercial activities	6 months (October to March)

A large majority of project-affected persons have livestock and agriculture fields in the middle and upper elevations in their respective village areas. Their livelihoods mainly depend upon agriculture, livestock, business, government as well private employment and some other minor domestic commodity sales. It is clearly established by the data and analysis that the loss of agricultural land and income sources are limited and insignificant compared to the residual land and livelihood resources in upper elevation

Considering the potential income losses by sources, the Project will have overall limited impacts on incomes. It is understood that the Project will have positive impacts for those in businesses, work in offices or employed otherwise by private sectors. Their income levels would rise. Also, the demands for wage laborers – skilled or unskilled will go up substantially during project construction. Therefore, for these groups, there would be no income losses.

However, for those dependent on small terrace agriculture, there will be income losses from loss of agriculture land. However, as most of the affected households have land at middle and upper reaches of their respective valley only a small portion of their holding will be affected by the project at the lower reaches near the banks of the Indus. Finally, livestock remains a major source of their income and a way of life. The herds move with the owners and there is no significance impact on the livestock as a whole. Therefore, support should be focused more on livestock improvements as a way of income and livelihood restoration.

7.8 APPROACHES TO INCOME AND LIVELIHOOD RESTORATION PLAN (ILRP)

Despite limited impacts of the project on income and livelihood source, the Project has undertaken both short and long-term steps to restore and improve incomes in post-relocation period.

7.8.1 Short and Long-Term Livelihood Programs

The income and livelihood restoration program (ILRP) has been developed with the aim of improving or at the least restoring to the earlier level the livelihood of all displaced households/persons. In preparing the program the impact of dislocation on livelihoods and adversely affected income was given due consideration. In addition to income restoration, capacity building and enhancing social capital of the affected communities

are major objectives of the ILRP. Hence, training and skills development and measures for income and livelihood restoration of those affected have been included in addition to compensation and resettlement benefits. An approach in two phases has been selected Phase I (2014-2019) is a short-term program implemented during the construction of the main structure and the relocation of the affected people. Phase II will start in 2019 will start after completion of the main structure (see Table 7.8). The first phase will be completed around the commissioning of the dam in 2019. Phase II (starting at 2020 - onward) will be a long-term development plan to be prepared and implemented by the Director – Resettlement with funding and assistance from the Project Resettlement Office (Table 7.8).

Table 7.5: Short and Long-Term Livelihood Programs

Construction Stage	ILRP Phase	Income and Livelihood Development Program
Stage 1 Phase I & II (2014-2019)	Phase I Short Term	<ul style="list-style-type: none"> Assistance to support lost income as per the eligibility in entitlement matrix Assistance to establish business/enterprises with assistance already incorporated in the matrix Special assistance to vulnerable groups as per the entitlement matrix and eligibility Preferential employment in construction work already included in the contract document with compliance requirement Work in Reservation Area Plantation and Conservation program
Stage 2 Phase III & IV (2022-on ward)	Phase II Long Term	<ul style="list-style-type: none"> 10-Yr Project-sponsored Social Development Program through Social Development Fund (SDF) Needs Assessment Survey for training and investment plan for income restoration activities Targeted Beneficiary Programs Agriculture Development and Livestock Program
	Area Development Program	<ul style="list-style-type: none"> Vocational Training and Skill Development Fishery Development Program Establishment of new health clinics Improvements of existing social infrastructures

The RAP has provisions for technical and extension services to support the affected households plan for businesses and other income-generating initiatives under the Project. The detailed planning of livelihood activities will be carried out with participation of the local community. The long-term programs will be designed considering the sustainability of income and livelihood based on local resources, skills, and market opportunities

7.8.2 Social Development Fund

The RAP has provision for Social Development Fund in the budget for long-term livelihood development program. The SDF will receive further funds from the benefit sharing programs after all policy details are finalized and approved by governments at various levels (national, provincial and district) and use the funds for area development and benefits of the affected persons and communities. The detailed planning of livelihood activities will be carried out with participation of the local community. It will be developed on the basis of assessment of community needs, requests, skill and preferences as well as options and opportunities available in local areas.

7.8.3 Area Development and Community Support Programs

In addition to improved quality of living at resettlement sites and livelihood restoration and enhancement program discussed above, the Project is also committed to an area development plan and community support program as good practices and benefit sharing with the community. This program is above and beyond the legally mandated compensation and resettlement assistance and already incorporated in the RAP and other social and environmental management plans. The primary purpose of these programs is sustainable resettlement and community development around the Project area by investing additional resources for community and local development. Key programs around the area development plan include (i) provisions for better access to education, health and involving of women in income generating activities; (ii) vocational training for local youth for employment in the project; (iii) improved roads and communication infrastructures; and (iv) other community support programs and local capacity building for project implementation. These are further elaborated in Vol. 12 Area Development and Community Support Programs.

8 PUBLIC HEALTH AND MANAGEMENT OF CONSTRUCTION-RELATED IMPACTS

In the area of public health and construction-related impacts, there are considerable risks – for example, the new in-migrants and construction workers at project sites putting various stresses on the local communities and social infrastructures. The Project has identified the range of social and environmental impacts and prepared plans to address the impacts as well as enhance the quality of life and living in the project area. These are briefly summarised below. Details are available in individual volumes.

8.1 PUBLIC HEALTH ACTION PLAN (PHAP)

PHAP focuses on mitigation of the health impacts related to project construction. The interventions address the main target groups: (i) the resettling and residing communities; (ii) population in the surrounding of the Construction sites; (iii) people attracted by and interacting with the construction related workforce; and (iv) construction workforce. The Public Health Action Plan envisages activities by health actors to concentrate on prevention and promotion, community work and primary curative care with some support to the secondary care level. Activities in the Plan include (i) preventive, primitive and curative health services; (ii) health messages with clear priorities (for instance, waste management, standing water, safe environment – particularly for women and children, domestic violence); (iii) focus on construction related health conditions and diseases like biological contaminants of drinking water, dust, combustion gases, emission to soil and water, noise and pollution; (iv) on-going public health and communicable diseases education campaign; and (v) secured housing for workers to stay with their families to reduce the likelihood of risky behaviour. The Gender and Community Health Team will implement the Plan under the supervision of the Director – Resettlement and in collaboration with the District Health office.

8.2 MANAGEMENT PLAN FOR CONSTRUCTION-RELATED IMPACTS

Dasu and Komila together have 7143 inhabitants. The construction of the dam project will require a significant number of migrant laborers to overcome the shortfall in the local labor market. Thus, the population will likely double or even triple during the construction of the project as the demand for construction workers will peak to 2,700/day. Thus, this small Dasu settlement on the Karakoram Highway will turn into a “boomtown” with the influx of new in-migrants during the project construction and the operation of the dam.

The project-induced in-migration will, therefore, change the local context socially and demographically resulting in significant risks to project implementation. The project can expect to attract a diverse range of new arrivals and in-migrants groups – namely, (i) project staff, experts – national and international; (ii) laborers and their families; (iii) traders/entrepreneurs; (iv) small business/shop owners; (v) suppliers of construction-related materials; and (vi) various other service providers.

The migration of laborers/construction workers and their families will introduce a wide range of concerns into the project area of operation – for instance, adequacy of public infrastructure, religious and civic amenities, local transport, housing, food security, health and safety and security issues. Migrant entrepreneurs will also arrive on the scene to benefit from the business opportunities associated with the project. There will be increased demand for goods and services as the migrant workers will likely have higher level of disposable income. This will also lead to the growth of small businesses/shops in the Dasu and in Komila bazaar on the right bank. Many small business owners will likely open *chappar* hotel (tea shop), *khokha* (small eatery) on both banks of the river and closer to construction sites, colonies and campsites and in the reservoir area where huge relocation and resettlement activities will be undertaken. .

The proposed actions include: (i) awareness building about in-migrants; (ii) construction camps and housing for workers; (iii) health and safety measures; (iv) improvement in local infrastructure and traffic management; (v) employment and business opportunities for all without any discrimination; (vi) community/area development plan; (vii) inter-cultural understanding and cohesion; and (viii) improvements in law and order and security for project construction. Details of the actions are in Vol. 8 Management Plan for Construction-related Impacts.

9 COMMUNICATIONS PLAN

9.1 COMMUNICATIONS PLAN

The communication plan will be used in the consultation and information dissemination processes in the implementation of all safeguard plans. It provides a detailed and specific framework that guides communications on Dasu Hydropower Project and identifies the issues that need to be addressed to build understanding and generate support for this mega power project in Pakistan. These issues were identified through a situation analysis conducted at the initial stages of the process of developing this plan. Key objectives of the Plan to increase awareness, improve knowledge, and timely disseminate information among key stakeholders and to make the Project accountable to the affected people and the stakeholders at large.

9.2 SPECIFIC COMMUNICATIONS STRATEGIES

In view of the current state of program communications in WAPDA, a set of new strategies will be adopted in the case of the Dasu Hydropower Project. These include:

- Internal communication to increase knowledge, build support for the implementation of the Dasu Project and address new and existing concerns among staffs of the project, other related government departments, and various institutions involved
- Provision of timely information on the project, its impacts, its timing, its progress, together with a mechanism to express their concerns and grievances and ensure that these are properly taken into account in the decision-making process
- Public participation mechanisms to provide platform to engage with institutions opinion leaders, implementation partners, and the general public
- A phased multi-media communication programme to increase knowledge on the project and to increase public support for Dasu HP and such projects in future

- Media advocacy to promote accurate and analytical coverage of the project
- Communications capacity strengthening of Dasu HP team and/or partners to implement the Communication Strategy

9.3 IMPLEMENTATION STRATEGY

A phased-in approach will be adopted when implementing this strategy over a period of three to five years. The first phase will be focusing on project communications and the Project Office will be responsible for coordinating the implementation of this phase. The long-term approach to seek support and share project benefits will be phased-in towards the end of the first year. Activities will be implemented at three inter-linked levels: national, provincial and local. The overall implementation will be coordinated through the proposed Hydropower Communications Unit to leverage resources and to maintain coherence of communication activities. The Communications Unit with the Project PMU will coordinate with Directors-Environment and Social/resettlement in developing communication materials and dissemination works. Further details of the strategy and implementation plans are available in Vol. 10 Communications Plan.

10 GRIEVANCE REDRESS PLAN

10.1 OBJECTIVES AND SCOPE

A Grievances Redress Plan has been adopted for the Project. It establishes the procedures for filing any grievances and disputes related to Project implementation, more particularly on social and environment safeguards and other entitlement issues arising out of the implementation of (SRMP)¹⁵ and (EMAP)¹⁶ of the Dasu Hydropower Project. It outlines the modalities and mechanisms for resolution of grievances within a defined timeline. The Grievances Redress Committees (GRCs) established under this plan is empowered to take decisions which are binding on WAPDA – the project executing agency.

The Project will establish a four-tier GRC system, including Project-level independent GRC, for resolution of grievances and disputes related to social and environmental resettlement safeguard plans (see Table 10.2) The GRCs are to ensure accessibility, fairness and independence of the procedures. The GRCs will be built on a “bottom up” system that would include: (i) Village-level GRC, (ii) UC Level GRC; (iii) District-level GRC, and (iv) Project-level GRC. First, GRC at the village level consisting of local representatives of the affected people and *maliks* or village elders, project staff, and local government representatives and will receive cases and resolve locally within a defined timeline. Cases which are not satisfactorily resolved or affected persons have still grievances will be forwarded to the next tier with full documentation and history of the case(s). Unresolved cases will move to the upper tier up to the Project-level GRC. Since GRC is a project-specific “extra-legal” system, the aggrieved party, after completing the processes, can eventually take resort to the court for resolution, if needed.

Table 10.1: Four- Tier GRC and Composition

Tier	Composition
Project Level GRC	Chair, Retired Civil Judge <u>Members:</u> (i) Deputy Commissioner; (ii) District Collector; (iii) Project Director; (iv) Rep of affected persons

¹⁵ SRMP consists of several actions plans dedicated to payments of compensation, resettlement of the affected persons, livelihoods, gender, public health and management of in-migrants and construction workers at the project site.

¹⁶ EMAP provides for mitigations of environmental impacts at the community level, including relocation and management of affected physical and cultural resources with the project area.

	Member-Secretary: Director (Social/Environment)
District Level GRC	Chair – Deputy Commissioner, Dasu Members – (i) DC (Rev); (ii) District level Malik/Elder; (iii) Deputy Project Director – PMU; and (iv) Rep of affected persons Member-Secretary: Director (Social/Environment)
Union Council Level GRC	Chair –District Collector (Rev) Members: (i) Additional AC (Rev); (ii) Tehsildar; (iii) Community Elder/Malik; (v) Rep of affected persons Member-Secretary: Director (Social/Environment)
Village Level GRC	Chair – Tehsildar Members – (i) <i>Patwari</i> /Gardawar; (ii) Village <i>malik</i> /elder or <i>Ulema</i> ; and (iii) Rep of affected persons Member-Secretary – Asst. Director (Social/Environment)< WAPDA

All four tiers of GRCs will deal with environmental grievances and disputes. Environment-related GRC process may start at the District-level GRC while compensation-related disputes must start at the Village level GRC. It is expected that many of the environmental-related impacts will be addressed and or mitigated by the project contractor(s) as a matter of compliance. GRCs at any level may seek technical help or advice from CSC environmental experts in the deliberation of any cases. All types of GRC cases must be resolved with four weeks' time.

11 INSTITUTIONAL ASPECTS AND IMPLEMENTATION

11.1 INTRODUCTION

At the corporate level, WAPDA has established (in 2010) the Land Acquisition and Resettlement (LA&R) Unit under a General Manager primarily to deal with LA&R activities of the Basha Dam Project.

For implementation of the SRMP (and EMAP), the following institutional arrangements have been established under the PMU. (Figure 11.1) The Chief Engineer-Deputy Project Director (Safeguards) has the overall responsibility for implementation of all SRMP and EMAP plans. He is assisted by two Directors (Social/Resettlement and Environment). The Director – Social and Resettlement will be responsible for project level implementation of all resettlement and social development activities and plans. The Director is assisted by three Deputy Directors (Resettlement, Communications Strategy and gender and Public health). Under each Deputy Director (DD), there are Assistant Directors with dedicated Team for specific tasks such as LA Team, R&R, Training and Livelihoods and so on.

11.2 ROLES AND RESPONSIBILITIES

11.2.1 Deputy Project Director-Safeguards

As the chief executive officer of the safeguard section of the Project Management Unit (PMU), the Deputy Project Director-Safeguards will be responsible for all required administrative and financial decisions and actions for effective and timely implementation of the Safeguards including the SRMP. The Deputy Project Director may delegate his/her power through the Director –Social and Resettlement Unit or other such officer for overall management & implementation of the Social and Resettlement Management Plan (SRMP) comprising the Resettlement Action Plan including the ILRP (RAP), and other safeguard plans such as Gender Action Plan (GAP), Public Health Action Plan (PHAP), Public Consultation and Participation Plan (PCPP), Grievance Redress Plan (GRP) and Management Plan for Construction-related

Impacts (MPCI). With regard to the implementation of the SRMP Deputy Project Director will have responsibilities like:

- (i) Overall implementation of the SRMP as per the agreements signed with the funding agency:
- (ii) Effecting necessary policy, administrative and financial decisions and actions necessary for the successful implementation of the RAP, as per WAPDA and Government of Pakistan decisions.
- (iii) Timely release of funds required for the Project Resettlement Office for implementation of the resettlement program, as per the approved implementation schedule
- (iv) Delegating responsibility and powers to the Deputy Director (Resettlement), for smooth implementation of the RAP

11.2.2 District Collector

The District Collector is the Government administrative authority of the district with the responsibility of land acquisition and compensation of the affected landowners as per the Land Acquisition Act (LAA) of 1894. The District Collector maintains official records and also possesses the Legal/Administrative authority for land titling and therefore assuring eligibility of affected persons for compensation

Cognizant of the fact that the District Collector is under staffed to conduct the land tenure verification and land acquisition process for project affected properties within the project specified time limits, the Project has already allocated resources to enhance the capability of the District Revenue Office. DHC social and environmental team members and WAPDA local office were engaged with the representatives of the District Collector during the joint land acquisition survey conducted on affected properties.

During the implementation process District Collector would appoint officers to assist in establishing the identity of the owners of the affected properties and process the documents for compensation payment. These officers, assisted by WAPDA local staff and Social Preparation Team (SPT) members, would be in-charge of land records and revenue.

The District Collector will receive funds from the project management and effect payment directly to the affected persons without any delay, by way of crossed cheques, following issuance of notices as required by LAA 1894. The engagement of the Deputy Commissioner (DC) will also be necessary in matters such as resolution of land ownership disputes and grievance redress. Table 11.1 summarizes responsibilities of the main stakeholders in SRMP implementation.

Table 11.1: Responsibilities of Main Stakeholders in SRMP Implementation

Sr. No.	Institution	Role Responsibilities
1	WAPDA	WAPDA is the owner of the DHP therefore it is responsible for the implementation and overall supervision. WAPDA is responsible for the implementation of the Social and environment plans. It will also act as internal monitor for effective implementation of SRMP
2	Contractor	Contractor is responsible for the construction works under the social and environment conditions.
3	DHC	DHC are responsible for the planning and design of the project and support to WAPDA in implementation of SRMP..
4	District Administration	Role of district administration is to provide full support and coordination to all stakeholders and keep law and order related to security measures.

5	Community	Local Community is the affectee as well as beneficiary of the project. Community/ Jirgas responsible to resolve social conflicts and to safeguard their rights.
6	External Monitor	External monitoring (MOWP, Planning Commission, EPA, Provincial and Federal Government Agency) will be responsible for the supervision of the project.
7	Independent Monitor	WAPDA will hire the service of a consultants who would be fully responsible for monitoring of SRMP and report to WAPDA Authority and World Bank.
8	IPOE	IPOE is responsible for the review of the project progress and advice there upon.
9	World Bank	World Bank is the donor of the DHP and has supervisory role.
10	Revenue Department	District Collector/Deputy Commissioner is responsible for the evaluation of the lost assets and disbursement of the compensations of lost assets.
Sr. No.	Institution	Role Responsibilities
1	WAPDA	WAPDA is the owner of the DHP therefore it is responsible for the implementation and overall supervision. WAPDA is responsible for the implementation of the Social and environment plans. It will also act as internal monitor for effective implementation of SRMP
2	Contractor	Contractor is responsible for the construction works under the social and environment conditions.
3	DHC	DHC are responsible for the planning and design of the project and support to WAPDA in implementation of SRMP..
4	District Administration	Role of district administration is to provide full support and coordination to all stakeholders and keep law and order related to security measures.
5	Community	Local Community is the affectee as well as beneficiary of the project. Community/ Jirgas responsible to resolve social conflicts and to safeguard their rights.
6	External Monitor	External monitoring (MOWP, Planning Commission, EPA, Provincial and Federal Government Agency) will be responsible for the supervision of the project.
7	Independent Monitor	WAPDA will hire the service of a consultants who would be fully responsible for monitoring of SRMP and report to WAPDA Authority and World Bank.
8	IPOE	IPOE is responsible for the review of the project progress and advice there upon.
9	World Bank	World Bank is the donor of the DHP and has supervisory role.
10	Revenue Department	District Collector/Deputy Commissioner is responsible for the evaluation of the lost assets and disbursement of the compensations of lost assets.

11.2.3 Dedicated Teams for SRMP Implementation

At the field level, there are dedicated teams – three for EMAP and six for SRMP_- for implementation of the plans. These teams are headed by trained professionals in respective fields with village-level workers (locally recruited graduates). Each team will have 3 to 5 persons, depending on the scope of work, with dedicated team tasks for RAP/SRMP implementation. Presently, the following six teams are envisaged for fielding at the beginning of the project implementation (Table 11.2). Additional team(s) can be raised depending on the project needs.

Table 11.2: Teams for SRMP Implementation

Team	Key Task
Compensation Team	Assist APs as well as District Collector for timely payments of compensation for acquired assets for the project
R&R Team	Work with affected communities in social preparation and mobilization for relocation and resettlement of the affected persons
Income and Livelihood Team	Promoting and establishing proposed livelihood restoration program, including priority employment in project sites
Gender and Community Health Team	Implementation of GAP and community healthcare and wellbeing as per the Public Health Action plan
Training and Skill Development Team	Organize skill development training, including identification of affected persons for vocational training at project costs, and facilitation of employment in project construction work
Migration Management Team	Work on programs dedicated to promote inter-cultural understanding between the migrants and local communities, and help in-migrant groups to settle and work in project site, including housing for new migrants, and assist in employment/business opportunities

11.3 TRAINING AND CAPACITY BUILDING

Subsequent to recruitment of staff for PRO they will be provided with training and capacity building. WAPDA will recruit PRO staff and conduct a week-long training at the project site. Further, there will be study tours and exposure trips for project staff within and outside the country. In Year 1, all PRO staff will be taken to Ghazi-Barotha Hydropower Project (GBHP) on a weeklong exposure trip to see various socio-economic programs conducted by the Ghazi-BarothaTaraqiatildara (GBTI) programs during project construction and post-project periods. Since the visit and “lessons learned” from GBHP would be helpful for PRO staff in social and resettlement implementation and management.

11.4 ROLE OF CSC CONSULTANTS

Resettlement specialists of the Construction Supervision Consultant (CSC) Team, acting on behalf of the DD (Resettlement) and PD will ensure that sound methodologies and practices are followed in the implementation of RAP. The consultants will also assist in establishing the PRO and training its staff. The consultants will advise on required changes in the modalities of the implementation work, participate in meetings with PRO, and DD (Resettlement) and assist DD (Resettlement) and RMU in monitoring the work of the PRO. The consultants will also review, on behalf of PD, the implementation progress reports, submitted by the contracted PRO on a regular basis. The consultants will also assist the PD in Identifying and selecting the external monitoring agency.

11.5 PARTICIPATORY RESETTLEMENT IMPLEMENTATION

Dasu Hydropower Project is a huge investment in Kohistan District and it faces complex challenges, particularly in its social programs, with many stakeholders involved. Its initial resettlement planning presents a general framework over the social issues to be addressed, its strategy and approach for mitigation and development and the overall implementation setup covering management, coordination, monitoring and evaluation. This general planning document will be further elaborated into detailed annual implementation programs with specific actions at community and household level, budget commitments and defined timelines. This is a dynamic process and requires active

participation of the primary stakeholders, particularly the communities and households involved. This is particularly so in the decision-making and implementation of the community-specific relocation plan, the community and household level income-restoration program, public health program and gender interventions. This entire process will follow a participatory approach. The specific mechanisms are described in various relevant sections of the SRMP.

11.6 ADAPTIVE MANAGEMENT APPROACH

It is understood that changes may be necessary at implementation stage to address and implement the safeguard plans. An adaptive management approach will therefore be adopted for social and resettlement management component. This will generally involve a “rolling plan” based on implementation experience of a particular plan or program under any implementation year that would identify the need for appropriate changes to improve and/or enhance implementation performance. In other words, “lessons learned” from early implementation experience will be evaluated carefully – for example, community-based relocation site development experience; vocational training in livelihood restoration, training for rearing improved variety of livestock through the livestock development centre, impacts of health and hygiene program under PHAP and GAP, and compensation and rehabilitation approach laid out in the RAP – so that the desired outcomes are achieved. Adaptive management will be applied to all safeguard plans for social and environmental management.

11.7 DATABANK FOR RAP IMPLEMENTATION AND MONITORING

The Director-SRU in coordination with Resettlement Monitoring Unit will establish an electronic databank and document archive as the main source of information on all resettlement-related data for implementation and monitoring purposes. In this respect, the comprehensive Databank of IOL and census/surveys conducted for planning purposes will be made available to the SRU Databank Manager. In addition to the above databank, the PRO data base will include information on land and property values, PAP entitlements, compensation received by PAPs, resettlement site development, income and livelihood restoration measures implemented and resolution of complaints received by GRC.

SRU will develop a Management Information System (MIS) to monitor and verify the progress in the field with geo referencing and digital systems. A general outline of the indicators used in the MIS is presented in Table 11.4.

Table 11.3: General Outline of MIS and Monitoring Indicators

Basic information on project-affected households	<ul style="list-style-type: none"> • Location and ID number of the household • Gender of the household head, household composition • Education level, skills etc. • Income sources
Asset lost	<ul style="list-style-type: none"> • Inventory of assets lost (e.g., land, structures, crops, tree) • Loss of wages, income, employment
Eligible compensation	<ul style="list-style-type: none"> • Compensation for lost assets • Resettlement benefits – house plot, house construction grant, shifting cost, subsistence allowance, special grant for female-headed households
Income Restoration Program	<ul style="list-style-type: none"> • Employment in construction sites • Training program for alternative income • Micro-credit loan

Information campaign, consultation, grievances resolution	<ul style="list-style-type: none"> • Distribution of brochure regarding policy and entitlements • Community meetings, consultation meetings, <i>jirgas</i> • Resolution of grievances by GRCs
---	--

12 COSTS AND BUDGET

12.1 SOCIAL SAFEGUARD COSTS

The costs and budgets are already included in the overall project costs as integral component of the project.¹⁷ Table 12.1 presents a summary of cost and budget for SRMP. The total cost for SRMP is \$426 million dollar, of which land acquisition and resettlement will cost \$398 million. Detailed costs are available in individual plans. Vol. 12 Costs and Budgetary Plan contain further details.

Table 12.1: SRMP Costs

COST AND BUDGETARY PLAN FOR SOCIAL AND ENVIRONMENTAL IMPACT MANAGEMENT																														
Activity	Pre- Constr.	Construction (Phase I)								Total Cost Phase-I (MU\$)	Operation Construction (Phase II)								Total Cost Phase-II (MU\$)	Total Cost (Ph-I&II) (MU\$)	Agency	Component								
		2014		2015		2016		2017			2018		2019		2020		2021						2022		2023		2024		2025	
		Q1	Q2	Q3	Q4	Q1	Q2	Q3	Q4		Q1	Q2	Q3	Q4	Q1	Q2	Q3	Q4					Q1	Q2	Q3	Q4	Q1	Q2	Q3	Q4
Sub-Component D-1: Social and Impact Management Cost & CSC Cost																														
1	Public Consultation and Participation Plan		0.04	0.05	0.05	0.05	0.05	0.05	0.05	0.05	0.41	0.05	0.05	0.01						0.12	0.53									
2	RAP Implementation		79.75	106.33	106.33	106.33					398.74									0.00	398.74	WAPDA	E1							
3	Public Health Management Plan		1.13	1.50	1.50	1.50	1.50	1.50	1.50	1.50	11.63	1.50	1.50	0.37						3.37	15.00	WAPDA	E1							
4	Grievance Redress Plan		0.20	0.200	0.200	0.200	0.200	0.200	0.200	0.200	1.60	0.20	0.20							0.40	2.00	WAPDA	E1							
5	Communication Plan		0.13	0.24	0.24	0.24					0.85									0.00	0.85	WAPDA	E1							
6	Down stream fishing Communities Baseline & Impact Assessment		0.20	0.72	0.72	0.72	0.72	0.72	0.72	0.48	5.00									0.00	5.00	WAPDA	E1							
Sub Total of SRMP Cost			81.44	109.04	109.04	109.04	2.47	2.47	2.47	2.23	418.22									3.89	422.11									
1	CSC for Phase-01		0.27	0.36	0.36	0.36	0.36	0.36	0.36	0.36	2.80	0.29	0.29	0.29	0.29					1.15	3.95	CSC	F1							
Total of SRMP and CSC Cost			81.71	109.40	109.40	109.40	2.83	2.83	2.83	2.59	421.02	0.29	0.29	0.29	0.29					5.04	426.06									

12.2 SRMP TASKS AND FINANCING

Implementation of the social safeguard plans will largely commence *prior* to the commencement of civil works and, therefore, there will be extensive safeguard-related tasks at pre-construction stage. During the construction period the safeguard plan implementation will be continued and implementation of some of these would be carried through to the post-construction phase. The SRMP implementation plan has been synchronized with the civil works in each phases of the project. Table 12.2 list major safeguard tasks by phases.

Table 12.2: Major Tasks by Phases

Phase	Major Implementation Tasks
-------	----------------------------

¹⁷ Vol. 12 Costs and Budgetary Plan.

Pre-Construction	<ul style="list-style-type: none"> • Social Preparation for SRMP Implementation • Support to AC (Revenue) for Land Acquisition • Updating of RAP data • Payments of compensation • RAP Implementation Schemes • Strengthening WAPDA Office in Dasu • Management Information System
Construction	<ul style="list-style-type: none"> • Security Issues and Need for Improvements • Managing SRU Activities • Livelihoods/Social Development Program • Area Development and Community Support Programs SRMP Implementation and Monitoring • Capacity building for SRMP Management
Post-Construction	<ul style="list-style-type: none"> • Livelihood/Local Area Development (to be continued) • Monitoring and Evaluation • Project Completion Report

The financing of these activities by phases has been considered in the year/phase wise costs for social and resettlement management. This is presented in Table 12.3. Details are available in Volume 13 Costs and Budgetary Plan.

Table 12.3: Year-wise Budgetary Allocation for SRMP

Year	2014	2015	2016	2017	2018	2019	2020
13	81.71	109.04	109.40	109.40	2.83	2.83	2.83
Cost (MUSD)	2021	2022	2023	2024	2025	TOTAL(M\$)	
	2.59	0.29	0.29	0.29	0.29	426.06	

13.1 SOCIAL SAFEGUARD FUND MANAGEMENT

The Project Director is responsible for necessary policy, administrative, management and financial decisions for effective and timely implementation of the safeguard plans as per the approved policy and implementation arrangements. Based on the approved budget, the Deputy Project Director –Safeguards will prepare annual financial plans for various safeguard plans as per the approved schedule. The PD will ensure timely release of necessary funds to Deputy PD (Safeguard) for achieving implementation targets of safeguard plans annually.

14 MONITORING, EVALUATION AND REPORTING

14.1 PROJECT MANAGEMENT AND MONITORING

The PMU will establish a management and monitoring plan through a management set-up and a monitoring and evaluation (M&E) system as a continuous process of collecting, collating and analysing information about the progress and as a tool for identifying strengths and weaknesses of the process. Also a periodic evaluation of the process and the outcomes will enable the implementing agencies to identify lapses, procedural weaknesses, policy

inadequacies and institutional drawbacks to devise and implement corrective measures to achieve the desired goals and objectives of SRMP.

Director-SRU will carry out internal M&E of all safeguard plans with a particular focus on RAP packages not only to maximise resettlement benefits but also to enhance the delivery capacity of project implementation.

14.2 MONITORING LEVELS

Monitoring of RAP implementation will be carried out at four levels.

First, PMU will conduct regular internal monitoring through the Internal Monitoring Executing Agency under the supervision of Deputy Project Director, Safeguards and the Construction Supervision Consultants.

Second, external monitoring will be conducted by an Independent Monitoring Consultants commissioned by PMU.

Third, the Ministry of Water and Power and Planning Commission of Pakistan will also carry out supervision and monitoring to ass the donors. The donors themselves will also monitor the overall performance of project, including the RAP and ILRP implementation through missions.

Fourth, the Panel of Experts (POE) established for this project will also periodically monitor the implementation of the project.

14.3 REPORTING REQUIREMENTS

Director- SRU will prepare monthly progress report (MPR) on SRMP implementation activities and forward to the PD and WAPDA. The PD will prepare monthly/quarterly reports for the donor agency with the assistance of CSC. The independent external monitor will submit quarterly reviews directly to the donor agency as well as the GM, Hydro-Planning to assist in ascertaining whether resettlement goals have been achieved, and more importantly, whether livelihoods and living standards have been restored/enhanced. The reports will include suitable recommendations for improvement. Monitoring reports will be submitted at regular intervals as specified. The M&E documents will also be publicly available, including posting in project website.

14.4 CONCLUSIONS

The Dasu Hydropower is a large, complex and sensitive project. Despite significant social and environmental impacts resulting from project implementation, the Project eventually will have overall positive impacts on the affected people and communities. The social and environmental assessments carried out during the detailed design stage have led to extensive documentations, including development of new policies and frameworks for mitigations of adverse impacts and enhancement. The resettlement and social development plans fully comply with World Bank operational guidelines and international “good practices” in hydro project development. Indeed, many innovative programs – for example, participatory resettlement planning and implementation, skill development and sustained employment in project construction, long-term income and livelihood restoration/social development plan, gender/health action plan, area development and community support programs, management plan for construction-related impacts – are all designed to support and assist the affected persons and communities to regain and/or improve the standards of living in post-project

period. The SRMP documents prepared for the Dasu Hydropower meet international practices setting new standards for hydropower projects in Pakistan and globally.

