



# Social Monitoring Report

---

Project Number: 50301- 002/ 003/ 004  
Loan Numbers: 3579 /3580 / 3851 / 4067  
Semi Annual Report  
June 2021

## Sri Lanka: Second Integrated Road Investment Program – Tranches 1, 2 and 3 PIC 07 – Western Province

Prepared by Road Development Authority, Ministry of Highways for the Government of Sri Lanka and the Asian Development Bank.

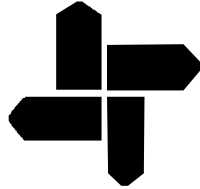
This social monitoring report is a document of the borrower. The views expressed herein do not necessarily represent those of ADB's Board of Directors, Management, or staff, and may be preliminary in nature.

In preparing any country program or strategy, financing any project, or by making any designation of or reference to a particular territory or geographic area in this document, the Asian Development Bank does not intend to make any judgments as to the legal or other status of any territory or area.

**DEMOCRATIC SOCIALIST REPUBLIC OF SRI LANKA**

Ministry of Highways

Road Development Authority



Asian Development Bank Funded  
Second Integrated Road Investment Program (**iRoad 2**)

**PIC-07– Western Province**

Loan Numbers: T1(L3579/ L3580), T2 (L3851) and T3 (L4067)

# **SOCIAL SAFEGUARDS MONITORING SEMI- ANNUAL REPORT**

**January - June 2021**

**Prepared by:**

SMEC Sub Consultancy with RDC and MHEC

**Submitted to:**

Ministry of Highways  
Road Development Authority  
iRoad 2 (WP)



Sub Consultancy with RDC and MHEC

## Table of Contents

<b>1. INTRODUCTION</b>	<b>1</b>
1.1 Background of the Project	1
1.2 Western Province	1
1.3 Implementation of iRoad programme in the Western Province	2
1.4 Consulting Services Contract	6
1.5 Scope of the PIC Services	6
1.6 Overview of Institutional Framework	6
1.7 Mobilization of Contractors	7
1.8 Context and Purpose of this Report	8
1.9 Social Safeguards staff of the iRoad 2, Western Province	8
<b>2. COMPLIANCE ON SOCIAL SAFEGUARDS REQUIREMENTS</b>	<b>9</b>
2.1 Compliance on Social Safeguards Provisions of the Loan Covenant	9
2.2 Compliance with Requirements in the Resettlement Framework (RF)	12
2.3 Compliance to the Social Requirements under the Project Facility Administration Manual (FAM)	13
<b>3. COMPLIANCE WITH RESPECT TO GENDER ACTION PLAN (GAP)</b>	<b>19</b>
3.1 Gender participation in Grievance Redress Committees (GRCs) at GN level and DS level.	19
3.2 Elderly- Women- Children- Disabled (EWCD) Friendly Design	25
<b>4. SOCIAL SAFEGUARDS ISSUES AND MITIGATION MEASURES IMPLEMENTED</b>	<b>28</b>
4.1 Issues and Mitigation Measures Implemented	28
4.1.1 COVID-19 Outbreak	28
4.1.2 Introduction of concept of Context Sensitive Design (CSD).	28
4.2 Grievance Redress Mechanism (GRM)	38
4.2.1 Establishment of GRCs at Grama Niladhari Division (GND) Level and Divisional Secretariat Division (DSD) level	39
4.2.2 Establishment of GRCs at Grama Niladhari Division (GND) Level	40
4.2.3 Establishment of GRCs at Divisional Secretariat Division (DSD) level	40
4.2.4 Receiving Public Complaints	44
<b>5. HIV/AIDS PREVENTION AND HEALTH AWARENESS PROGRAMMES AND ROAD SAFETY AWARENESS PROGRAMMES</b>	<b>48</b>
<b>6. LAND DONATION</b>	<b>49</b>
6.1 Status of Land Donation	50
<b>7. MONITORING</b>	<b>62</b>
<b>8. CONCLUSION</b>	<b>63</b>

## List of abbreviations

ADB	Asian Development Bank
ARE	Assistant Resident Engineer
BOQ	Bills of Quantities
CRC	Conventional Road Contracts
CSD	Context- Sensitive Design
CSR	Corporate Social Responsibility
DSD	Divisional Secretary Division
EGM	Effective Gender Mainstreaming
EHS	Environmental, Health and Safety
ES	Environmental Specialist
ESDD	Environmental and Social Development Division
EWCD	Elderly Women Children Disabled
FAM	Project Facility Administration Manual
FGD	Focus Group Discussion
FIDIC	International Federation of Consulting Engineers ( <i>Federation Internationale des Ingenieurs Conseils</i> )
FS	Feasibility Study
GAP	Gender Action Plan
GND	Grama Niladari Division
GOSL	Government of Sri Lanka
GRC	Grievance Redress Committee
GRM	Grievance Redress Mechanism
IA	Implementing Agency
ICB	International Competitive Bidding
IPP	Indigenous Peoples Plan
IPPF	Indigenous Peoples Planning Framework
iRoad	Integrated Road Investment Program
MDB	Multilateral Development Bank
MFF	Multi Tranche Financing Facility
MOHW	Ministry of Highways
MOU	Memorandum of Understanding
NCB	National Competitive Bidding
OPRC	Output and Performance based Road Contracts
PC	Provincial Council
PE	Project Engineer
PIC	Project Implementing Consultant
PIU	Project Implementing Unit
PMU	Project Management Unit
PPE	Personal Protective Equipment
PPMS	Project Performance Management System
PPTA	Project Preparatory Technical Assist
PS	Pradeshiya Sabha
RDA	Road Development Authority

RE	Resident Engineer
RF	Resettlement Framework
RMC	Road Management Contract
ROW	Right of Way
RSA	Road Safety Awareness
SAPE	Survey and Preliminary Engineering
SGRS	Social Gender Resettlement Specialist
SPS	Safeguards Policy Statement, 2009 of ADB
SSO	Social Safeguard Officer
STD	Sexual Transmitted Diseases
STI	Sexually Transmitted Infection
TL	Team Leader
TOR	Terms of Reference
WP	Western Province

### **List of tables**

Table 1.1: Summary of Contract Packages

Table 1.2: CRCs in Colombo District

Table 1.3: CRCs in Gampaha District

Table 1.4: CRCs in Kalutara District

Table 1.5: Mobilization of Contractors

Table 2.1: Compliance with Loan Conditions (Social Safeguards)

Table 2.2: Compliance with RF

Table 2.3: Compliance with FAM (Social Safeguards)

Table 3.1: Gender participation in GRCs at GND level

Table 3.2: Gender participation in GRCs at DS level

Table 3.3: Status of gender composition of staff of the Consultants, Contactors' staff and labour workforce.

Table 3.4: EWCD – Beneficiaries of the project;

Table 4.1: Summary of Design changes due to public requests

Table 4.2: Design changes made to the original design of roads due to public requests.

Table 4. 3: Establishment of Grievance Redress Committees (GRCs)

Table 4.4: Classified summary of Public Requests, Suggestions and Complaints

Table 4.5: Addressing Complaints at three levels

Table 6.1: Summary of Land donation

Table 6.2: Memorandums of Understanding (MOUs) –individual

Table 6.3: Memorandums of Understanding (MOUs) – Common

Table 6.4: Confirmation of land donation –Consent letters

### **List of figures**

Figure 1.1. Staff arrangement for Social Safeguards

Figure 4.1. GR process

Figure 6.1 Written confirmation of land donation

### **List of Maps**

- Map 1.1. Map of Sri Lanka.
- Map 1.2. Locations of 208.2km (119 nos.) roads in Colombo District.
- Map 1.3. Locations of 263.9km (162 nos.) roads in Gampaha District.
- Map 1.4. Locations of 234.6km (97 nos.) roads in Kalutara District.

### **List of Pictures**

- Picture 01: Women participate in consultation in the field – Rd ID WGA 107, GA 02, Gampaha
- Picture 02: Women participation at GRC meeting held GN level, GRC meeting – CL 02, Colombo
- Picture 03: Women participation at a meeting held on establishment of GRC at Bulathsinhala DS office, Kalutara
- Picture 04: Women at office work – GA 01, Contractor's office, Gampaha
- Picture 05: Induction on safety work at Toolbox meeting - GA 01, Gampaha
- Picture 06: Women assist to follow the COVID – 19 Guidelines in project activities
- Picture 07: Women were more active in consultation – Selection of a lead away – WKL 223, KL 04, Kalutara
- Picture 08: Existing school access
- Picture 09: Malagala Maha Vidyalyaya, Malagala
- Picture 10: Before- Original status of the entrance to the school.
- Picture 11: After – Completion of safety access to the school.
- Picture 12: CSR programe, Sri Shobitha Temple, KL 05 contract package, Kalutara
- Picture 13: Design changes -Passing Bay – Rd ID WKL 185, Ch. LHS 1 + 175, KL 05, Kalutara
- Picture 14: Changed the culvert Section at WCO 085, CH 1+340, CL 01, Contract package, Colombo
- Picture 15: Shifted culvert at WCO 058, CH 0+740, CL 01- Contract package, Colombo
- Picture 16: Road design changed to shift the road LHS due to safety issue, Rd ID WKL 066, 2+000, KL 04, Kalutara
- Picture 17: GRC establishment – GN level, WGA 238, GA 04, Gampaha (During second wave)
- Picture 18: GRC establishment – DS level, Horana, KL 04, Kalutara
- Picture 19: GA 02, Rd ID WGA 136, Gampaha district
- Picture 20: Brochure distribution, WGA 334, GA 02, Gampaha
- Picture 21: Brochure distribution – WKL 153, KL 05, Kalutara
- Picture 22: Public Announcement – WGA 334. GA 02, Gampaha
- Picture 23: Public Announcement – WKL 153, KL 05, Kalutara
- Picture 24: Rd ID WCO 84, CO-OP shop, Colombo
- Picture 25: Panagoda GN office, KL 05, Kalutara
- Picture 26- Millaniya DS office, KL 05, Kalutara
- Picture 27- Contractor's office, GA 01, Gampaha

Picture 28: Public consultation and addressing a public complaint – KL 05, WKL185, Kalutara

Picture 29: Land donation, KL 05 contract package, Kalutara

Picture 30: Land donation - Preliminary work - RD ID WGA 136, Ch. 1 +130, GA 02, Gampaha

## **Annexures:**

- 1.1 Overview of Institutional Framework.
- 1.2 GAP Implementation Matrix.
- 1.3 Implementation of Site specific COVID - 19 Action Plan and good practices in Gampaha district.  
(A Sample)



## 1. INTRODUCTION

### 1.1 Background of the Project

Road Development Authority (RDA) is implementing Integrated Road Investment Program to enhance the connectivity of rural socio-economic centers with the funding of Asian Development Bank (ADB). Under the iRoad Programme<sup>1</sup>, around 3,130 km of rural roads were rehabilitated and maintained in Southern, Central, Sabaragamuwa, North Central, North Western provinces and Kalutara district.

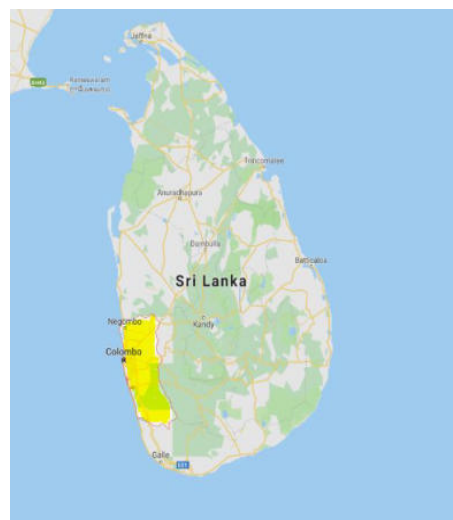
In this background, the Democratic Socialist Republic of Sri Lanka has applied for a Multitranchise Financing Facility (MFF) for the Second Integrated Road Investment Program (iRoad 2) from the ADB to enhance the scope for remaining provinces of Northern, Eastern, Uva and Western and improve the access routes between rural areas and socioeconomic centers, in tranches. The program includes to rehabilitate/improve approximately 3,650 km of roads through Conventional Road Contract (CRC), covering rural access roads and national roads including post construction performance base maintenance, in four (4) separate geographical areas. Part of the funds from the MFF shall be used to engage an International Consultancy Firm as Project Implementation Consultant (PIC) to assist RDA for project implementation including construction supervision, supervision of post construction maintenance work, contract management, and other implementation activities in the CRC component.

The Executing Agency (EA) of the Second Integrated Road Investment Program is Ministry of Highways (MoHW) and the Implementing Agency (IA) is the RDA. Four Project Implementation Consultant (PIC) teams have been recruited for project implementation including construction supervision, supervision of post construction maintenance work and contract management.

### 1.2 Western Province

The Western Province is one of the nine (09) Provinces in Sri Lanka, the first level administrative division of the country. Western Province which is 3,593 km<sup>2</sup> in extent is home to the country's legislative capital Sri Jayawardenapura. It is also home to the country's commercial hub, Colombo. The Western Province consists of three districts: Colombo, Gampaha and Kalutara.

Colombo District is 642 km<sup>2</sup> in area and its main city is Colombo. The other popular and important cities in the district are Dehiwala, Nugegoda, Maharagama, Homagama, Awissawella and Moratuwa. Gampaha District is 1,386.6 km<sup>2</sup> in extent and its main city is Gampaha. Other popular and important cities are Nittambuwa, Wattala, Ja-Ela, Negombo and Veyangoda. Another district of the Western Province Kalutara which is 1606 km<sup>2</sup> in extent and its main city is Kalutara. The other important and popular cities in the district are Panadura, Beruwala, Aluthgama, Horana and Mathugama.



**Map 1.1:** Map of Sri Lanka

The Western Province's population was 5,821,710 in 2012. The majority of the population are Sinhalese (84.26%), with a minority Sri Lankan Moor (7.74%) and Sri Lankan Tamil (5.77%) population. 73.67% were Buddhist, 12.93% were Christian, 8.61% are Islam, 4.71% are Hindu.

Western Province belong to low country – wet, and wet zones while the eastern part of the Kalutara District falls in to the mid country - intermediate zone.

(Source: <https://www.adb.org/sites/default/files/linked-documents/50301-001-ieeeab-04.pdf>)

### 1.3 Implementation of iRoad programme in the Western Province

This project report covers Western Province under second Integrated Road Investment Programme (iRoad 2). The project consists of 378 number of roads and details are given in the Table 1.1 below;

**Table 1.1: Summary of Contract Packages**

District	No of Packages	No of Roads	Road Length (km)
Colombo	03	119	208.2
Gampaha	04	162	263.9
Kalutara	03	97	234.6
<b>TOTAL</b>	<b>10</b>	<b>378</b>	<b>706.7</b>

The three (3) CRCs in Colombo District are listed in Table 1.2.

**Table 1.2: CRCs in Colombo District**

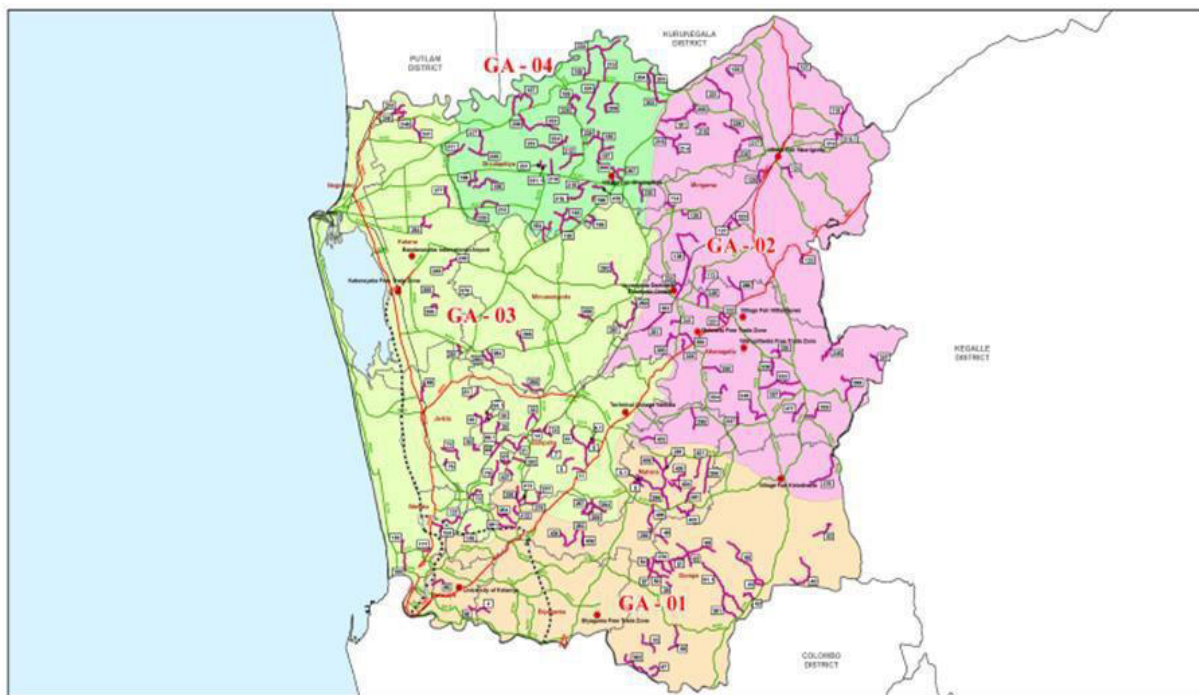
No	Contractor	Accepted Contract Amount (LKR)	Date of Commencement	Road Length (km) / Nos			
				PRDA	UC	PS	Total
CL01	NCC Limited	2,057,662,558.32	29.06. 2020	5.3/2	16.1/17	31.6/22	<b>53.0/41</b>
CL02	Kalika Construction & Gamini Construction JV	2,259,188,016.00	29.06.2020	16.9/4	-	53.9/36	<b>70.9/40</b>
CL03	Hovel Construction Pvt. Ltd. & Senok Trade Combine Pvt. Ltd. JV	2,631,613,225.16	01.06.2020	19.6/4	01.9/2	62.8/32	<b>84.3/38</b>
<b>Sub Total Colombo District</b>		<b>6,948,463,799.48</b>		<b>41.8/ 10</b>	<b>18.0/19</b>	<b>148.3/ 90</b>	<b>208.2/ 119</b>

The map illustrates the Kosi River Basin, divided into three sub-basins: CL-01 (pink), CL-02 (green), and CL-03 (blue). Major cities and towns are marked, including Dharan, Biratnagar, and Bhadrapur. The map also shows the Kosi River and its tributaries, as well as the surrounding districts: Garhampa, Kailash, and Kailashpur.

The four (4) CRCs in Gampaha District are listed in Table 1.3.

No	Contractor	Accepted Contract Amount (LKR)	Commencement Date	Road Length (km) / Nos		
				PRDA	PS	TOTAL
GA01	Hovel Construction Pvt. Ltd. & Senok Trade	2,026,943,069.94	01.06.2020	13.5/6	40.3/27	53.8/ 33
GA02	Access Engineering PLC	2,817,267,187.20	03.04.2020	20.0/8	59.9/39	79.9/ 47
GA03	Access Engineering PLC	2,328,366,712.97	03.04.2020	20.7/12	38.6/32	59.3/ 44
GA04	Access Engineering PLC	2,379,241,688.40	03.04.2020	10.9/5	60.0/33	70.9/ 38
Sub Total Gampaha District		9,551,818,658.51	-	65.0/ 31	198.8/	263.9/162

The locations of 263.9km (162 nos.) roads in Gampaha District are shown in **Map 1.3** below.



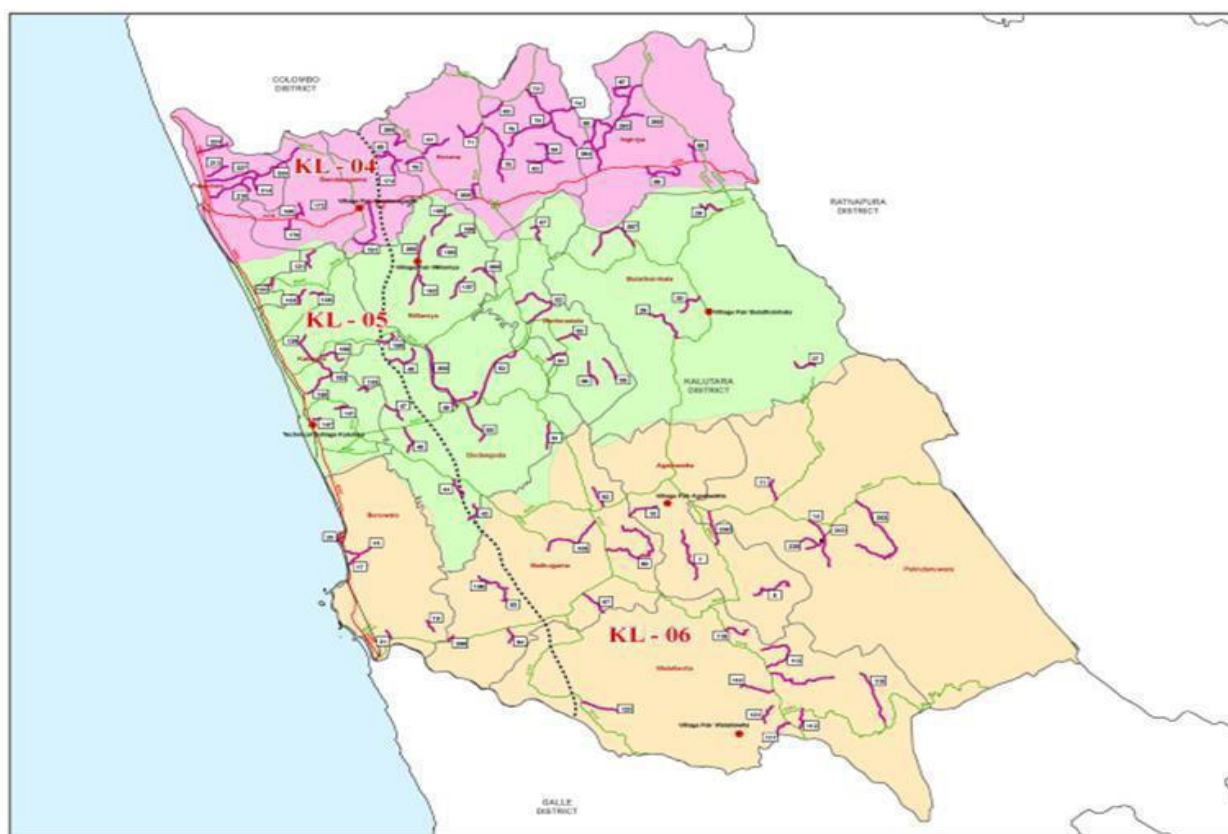
**Map 1.3:** Locations of 263.9km (162 nos.) roads in Gampaha District

District The three (3) CRCs in Kalutara District are listed in Table 1.4.

**Table 1.4: CRCs in Kalutara District**

No	Contractor	Accepted Contract Amount (LKR)	Commencement Date	Road Length (km) / Nos			
				UC	PS	RDD	Total
KL04	NCC Limited	2,690,589,823.92	29.06.2020	-	32.0 /16	44.6/12	<b>76.6/28</b>
KL05	NCC Limited	2,948,903,811.72	29.06.2020	0.6/1	59.9/31	22.7/7	<b>83.2/39</b>
KL06	Luxman Metal Crushers & Enterprises	2,308,042,663.60	29.06.2020	-	52.3/ 24	22.5/6	<b>74.8/30</b>
<b>Sub Total Kalutara District</b>		<b>7,947,536,299.24</b>	<b>-</b>	<b>0.6/1</b>	<b>144.2/71</b>	<b>89.8/25</b>	<b>234.6/97</b>

The locations of 234.6km (97 nos.) roads in Kalutara District are shown in **Map 1.4** below.



**Map 1.4:** Locations of 234.6km (97 nos.) roads in Kalutara District

## 1.4 Consulting Services Contract

Following a two-stage tender process of Expressions of Interest (EOI) and Request for Proposals (RFP) complying to the guidelines of the GOSL and ADB, a technical and financial proposal for the provision of Project Implementation Consultancy Services, including construction supervision, contract management and other implementation activities in Western Province (PIC-07) was submitted to the RDA in November 2017 by SMEC sub-consultants with RDC and MHEC. The PIC-07 consultancy services contract was awarded to SMEC sub-consultants with RDC and MHEC on 25 September 2019 and the 'Notice to Proceed' was issued on 21 October 2019, with a 14-day commencement period.

## 1.5 Scope of the PIC Services

The main task of PIC-07 (CRC) is to assist RDA in supervising and/or implementing the civil works in the CRC

component of the iRoad 2 program in the Western Province.

The scope of the PIC services and resulting tasks in the TOR fall under the following six components;

- (i) Contract administration based on the FIDIC MDB contract [TOR 12 (i)];
- (ii) Undertake safeguards compliance; ensure that all safeguards (social, environment and indigenous peoples) are being complied under the project [TOR 12 (ii)];
- (iii) Undertake the Project Performance and Monitoring Survey 3 times; at the start of the Consultancy Contract, at midterm (end of the construction period) and at the end of the Project (end of performance- based maintenance period) [TOR 12 (iii)];
- (iv) Prepare and implement a capacity development program including training, workshops, and seminars to staff of MOH, RDA, and provincial and local road agencies on project management and contract administration [TOR 12 (iv)];
- (v) Prepare monthly reports on progress and other issues [TOR 12 (v)];
- (vi) Prepare a project completion report when the Project is substantially completed incorporating comments from the PIU, the IA, the EA and the ADB [TOR 12 (vi)]

## 1.6 Overview of Institutional Framework

Institutional Framework shows the reporting lines and key organizations involved in iRoad 2 program implementation, which include the National Steering Committees (NSCs), Executing Agency (MOH), provincial coordinating committee, Implementing Agency (RDA), the Project Implementation Unit (PIU), Project Implementation Consultants and the Contractors

SMEC sub-Consultants with RDC & MHEC being the PIC-07 consultancy services provider has selected a well-qualified and experienced team of professionals to assist the RDA in the successful delivery of iRoad 2 Western Province. The consultancy services comprise of 30 Person-Month input of an international Team Leader/ Chief Resident Engineer, six month input of an international FIDIC Contracts & Claims Specialist on an as required basis, 570 national Person-Month inputs of 22 key



professionals during construction period of Deputy Team Leader (30 months), 3 x Resident Engineers (27 months), 2 x Rural Road Design & Safety Engineers (24 months), 2 x Structural Engineer (12 months), 3 x Materials Engineers (24 months), 3 x Quantity Surveyors (27 months), Environmental Specialist (24 months), Social, Gender and Resettlement Specialist (24 months), Contracts & Claims Engineer (27 months), 3 x Assistant Resident Engineers (27 months), and during the maintenance period a Resident Engineer and a Quantity Surveyor for each 39 months. It also provides for 1350 national Staff-Month inputs of non-key experts of Planning Engineer (27 months), 13 x Construction Engineers (27 months), 3 x Junior Engineers (24 months), 3 x Land Surveyors (24 months), 21 x Technical Officers (24 months) during the construction period and during the maintenance period 9 x Technical Officers for each 36 months.

Further support staff operatives to the Engineer is provided through the respective CRC Packages, being Administration Managers, Secretaries, Lab Technicians, Survey Assistants, CAD Operators, Assistant Quantity Surveyors, Environmental Officers, Social Officers, Clerks, Office Aides, House Keepers and Labours for each CRC Package. Overview of Institutional Framework is appeared in Annexure 01.

## 1.7 Mobilization of Contractors

The iRoad 2, Western Province has commenced its activities after mobilizing the Contractors. As depicted in the table below, project activities in three (03) Contract Packages have been started in April 2020 and the rest seven (07) Contract Packages started to implement the project with effect from June 2020.

**Table 1.5: Mobilization of Contractors**

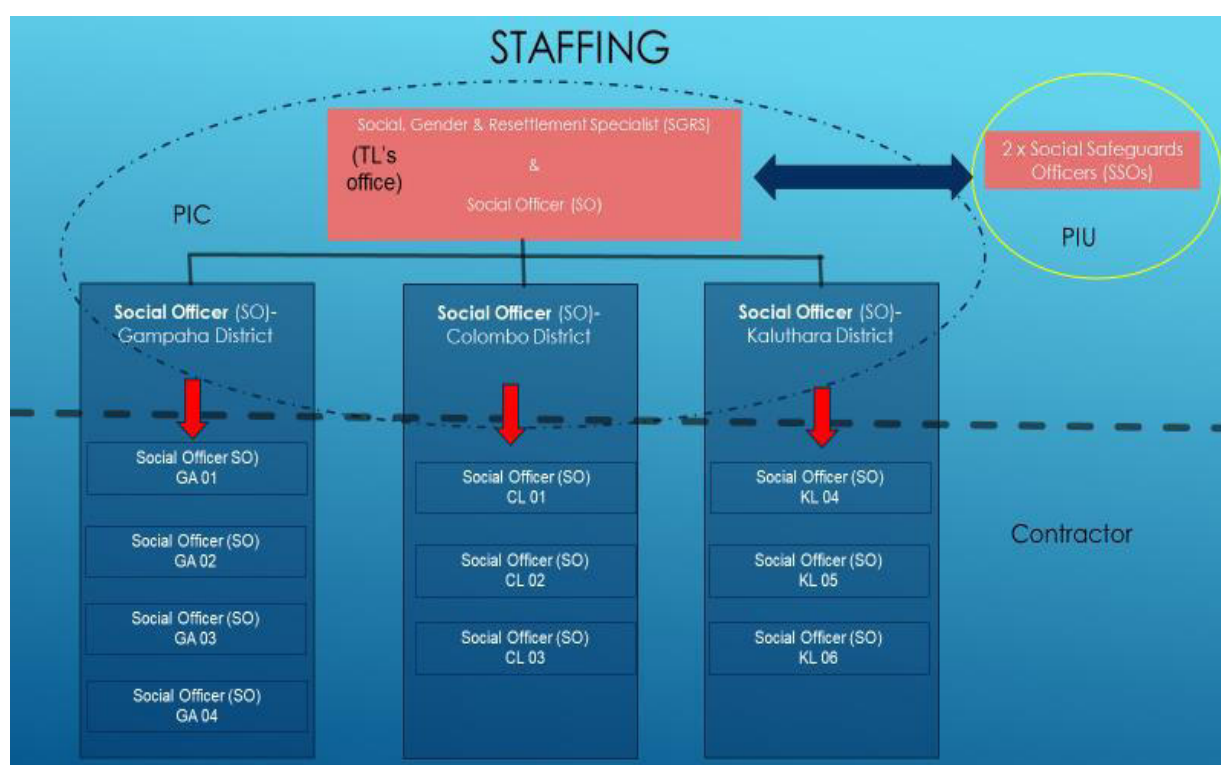
District	Contract Package	Contractor	Date of commencement
Colombo	CL 01	NCC Limited	29 June 2020
	CL 02	Kalika Construction & Gamini Construction JV.	29 June 2020
	CL 03	Hovael Construction Pvt. Ltd, & Senok Trade Combine Pvt. Ltd. JV.	01 June 2020
Gampaha	GA 01	Hovael Construction Pvt. Ltd, & Senok Trade Combine Pvt. Ltd. JV.	01 June 2020
	GA 02	Access Engineering PLC.	03 April 2020
	GA 03	Access Engineering PLC.	03 April 2020
	GA 04	Access Engineering PLC.	03 April 2020
Kalutara	KL 04	NCC Limited	29 June 2020
	KL 05	NCC Limited	29 June 2020
	KL 06	Luxman Metal Crushers and Enterprises	29 June 2020

## 1.8 Context and Purpose of this Report

Resettlement Framework (RF) which has been prepared during the Project Preparatory Technical Assistance (PPTA) and updated in June 2017 sets out guidelines and procedures that need to be complied under social safeguards of the project. As per section 10 of RF on “Monitoring and Reporting” it is required to prepare a Semi- annual Monitoring Report on the progress of Social Safeguards compliance of the project.

This report is prepared to serve as the 3<sup>rd</sup> Semi-annual Monitoring Report on Social safeguards and the reporting period is from January to June 2021 for PIC-07 (Western Province).

## 1.9 Social Safeguards staff of the iRoad 2, Western Province



**Figure 1.1:** Staff arrangement for Social Safeguards



## 2. COMPLIANCE ON SOCIAL SAFEGUARDS REQUIREMENTS

As indicated above the Resettlement Framework (RF) which includes guidance in Social Safeguard has been developed during the Feasibility Study (FS) of the project. The RF provides guidance in selection, screening, categorization, impact assessment, project implementation and monitoring of social safeguards according to requirements of the Government of Sri Lanka as well as the ADB Safeguard Policy Statement (SPS, 2009) for the investment program. As per the guidelines given in RF tranches one, two or any succeeding tranches of iRoad 2 program should adopt the following key social safeguards requirements;

- Selections of roads that fulfill the minimum Right of Way (ROW) requirement, there by avoid land acquisition and involuntary resettlement.
- Avoid acquisition of land and involuntary resettlement through alignment shifts, and modifications in cross-sections to the extent required from safety considerations.
- Carry out meaningful consultations with the public from preliminary design stage so as to make public aware of the project and to obtain inputs from the public/ community to be incorporated in to road designs.
- Ensure that due consultations are carried out with individuals or community and obtain their written agreements in case there is a requirement of additional land for road improvements (as identified during detail design and construction stages).
- Ensure that such land is obtained only through a well-documented “Land Donation Process” as stipulated in the Resettlement Framework for the project.
- Ensure that a Grievance Redress Mechanism (GRM) is in place to address any grievance.
- Ensure gender participation in the project from preliminary design stage through construction and maintenance period.

### 2.1 Compliance on Social Safeguards Provisions of the Loan Covenant

The requirements stipulated in the loan conditions of PIC-07 have been or are being complied with as detailed in the below table.

**Table 2.1: Compliance with Loan Conditions (Social Safeguards)**

Item/ Schedule/ section	Description	Status of Compliance
Schedule 4 Section 9 Consulting Services	The Borrower shall recruit the individual consultants for the activities specified in the Procurement Plan in accordance with procedures acceptable to ADB for recruiting individual consultants.	Recruitment of individual consultant for activities outlined in the procurement plan has been completed.

Item/ Schedule/ section	Description	Status of Compliance
Schedule 5 Section 3 Land Acquisition and Involuntary Resettlement	The Borrower shall ensure, or cause RDA to ensure, that any voluntary donation of land by beneficiaries for any provincial or rural road is implemented in accordance with the procedures set forth in Appendix 1 of the RF (Updated June 2017) after free, prior and informed consultations and consent of the affected persons, provided that there shall be no voluntary land donation for national roads.	The procedure has been followed in accordance with Appendix 1 of the RF in respect of voluntary land donation.  During the period under review, 116 nos. of land donations have been taken place.
Schedule 5 Section 6  Indigenous People	The Borrower shall ensure that the Project does not have any indigenous peoples impacts, within the meaning of the SPS. In the event that the Project does have any such impact, the Borrower shall take all steps required to ensure that the Project complies with the IPPF applicable laws and regulations of the Borrower and with the SPS.	All roads selected under PIC 07 have minimum corridor of not less than 2.5 m in rural roads while the ROW for trunk roads has been set at 5.5 m.
Schedule 5 Section 11  Labour Standards, Health and Safety	The Borrower shall ensure that the core labor standards and the Borrower's applicable laws and regulations are complied with during Project implementation. The Borrower shall include specific provisions in the bidding documents and contracts financed by ADB under the Project requiring that the contractors, among other things: (a) comply with the Borrower's applicable labor law and regulations and incorporate applicable workplace occupational safety norms; (b) do not use child labor; (c) do not discriminate workers in respect of employment and occupation; (d) do not use forced labor, (e) allow freedom of association and effectively recognize the right to collective bargaining; and (f) disseminate, or engage appropriate service providers to disseminate, information on the risks of sexually transmitted diseases, including HIV/AIDS, to the employees of contractors engaged under the Project and to members of the local communities surrounding the Project area, particularly women.	No child labour is used by the Contractors.  The Contractors are advised to recruit more females for their work force.  All the Contractors pay equal wages to men and women for work of equal value.  Conducting of HIV / AIDS prevention and Health Awareness programmes have been temporarily postponed due to current COVID - 19 pandemic situation.  However, adequate measures have been taken to reduce the risk of COVID-19 pandemic outbreak at work places and work sites.

Item/ Schedule/ section	Description	Status of Compliance
Schedule 5 Section 14 Gender and Development	The Borrower shall ensure, or cause RDA to ensure, that (a) the GAP is implemented in accordance with its terms; (b) the bidding documents and contracts include relevant provisions for contractors to comply with the measures set forth in the GAP; (c) adequate resources are allocated for implementation of the GAP; and (d) progress on implementation of the GAP, including progress toward achieving key gender outcome and output targets, are regularly monitored and reported to ADB.	The project has complied with the GAP and the progress of implementation of GAP is appeared in annexure 2 of the report.

## 2.2 Compliance with Requirements in the Resettlement Framework (RF)

Initial selection of rural and truck roads has been carried out based on the information gathered through District Secretariats, Divisional Secretaries and civil societies. These roads have been then inspected to verify the availability of land (i.e. Right of Way). Other requirements stipulated in the RF have been or are being complied with as detailed in the below table.

**Table 2.2: Compliance with RF**

Item/ Section/ Schedule	Description	Status of Compliance
A. Background	<b>5. Rural Roads.</b> For the rural roads, there will be three contract packages per district. The contractor will be responsible for construction of the road over 2 years and performance-based maintenance for another 3 years. For the rural roads, the improvements will be undertaken completely within the existing right of way (ROW) which is between 2.5m to 5.5m. Rehabilitation works will include improving pavements/road surface, construction of side drains and embankments, and improvement of culverts, cause ways and bridges.	<b>Complied with in selection of roads in WP.</b>  No road having an average ROW less than 2.5 m was selected. Further locations where improvements to road structures and safety needs have been highlighted in transect walk records.
B. Screening Criteria of Subsequent Projects	<b>43.</b> The PIU will be responsible for involuntary resettlement planning and implementation. The following checklist will be used to screen projects to be financed under subsequent tranches of the investment program. <b>45.</b> The PIU will be responsible for clearly documenting the answers to these questions in a table format. In addition, the PIU will submit to ADB the Involuntary Resettlement Impact Categorization Checklist in Appendix 1 for each subsequent tranche. Based on the screening, the tranche will be assigned to one of the following categories depending on the significance of probable involuntary resettlement impacts:	<b>Complied during survey and preliminary engineering (SAPE) works.</b>  Screening of all roads has been completed.

Item/ Section/ Schedule	Description	Status of Compliance
	<p>(i) Category A – A proposed tranche is classified as Category A if it is likely to have significant involuntary resettlement impacts. A resettlement plan, including an assessment of social impacts, is required.</p> <p>(ii) Category B – A proposed tranche is classified as category B if it includes involuntary resettlement impacts that are not deemed significant. A resettlement plan, including assessment of social impacts, is required.</p> <p>(iii) Category C – A proposed tranche is classified as Category C if it has no involuntary resettlement impacts. No further action is required.</p>	
C. Land Acquisition Due Diligence Reports	<p><b>49.</b> If no acquisition and resettlement impacts were identified during screening, the government will be required to prepare a due diligence report providing support and evidence that there is no impact on land and structures. The due diligence report should confirm whether there are outstanding grievances or issues from previous acquisition of land. The information in the report should be supplemented with findings and analysis from the socioeconomic survey comprising of 20% of households in the project affected area.</p>	<p><b>Complied during survey and preliminary engineering (SAPE) works.</b></p> <p>Involuntary Resettlement Due Diligence and Socio-economic Assessment report has been prepared for WP.</p>

### 2.3 Compliance to the Social Requirements under the Project Facility Administration Manual (FAM)

The requirements stipulated in the Facility Administration Manual (FAM) of October 2019 of iRoad 2 program have been or are being fulfilled. Details of each item is summarized in below table.

**Table 2.3: Compliance with FAM (Social Safeguards)**

Item/ Section/ Schedule	Description	Status of Compliance
VII Safeguards – B. Involuntary Resettlement	<p><b>52. Categorization.</b> The scope of works under the MFF involves the improvement of rural access roads and national roads to be carried out all within the existing alignment with no widening. Therefore, all tranches under the MFF have been classified B in accordance with ADB's Safeguard Policy Statement. Land acquisition due diligence was undertaken for all project roads and did not identify any impact on land, structures, private trees, or community resource properties.</p> <p><b>53. Preconstruction.</b> The RDA, supported by its ESDD and consultants, is responsible for conducting a transect walk for each rural road, during which the community is consulted and involved to (i) minimize construction impact, (ii) identify and minimize social and environment impacts, and (iii) integrate road safety design into the project. The community has also been briefed about the grievance redress mechanism. The results from the transect walk (report and map) will be submitted to the civil works contractor who will integrate feasible features into the level-1 final design. The PIC will review the final design.</p>	<p>Road widening is envisaged only where social safety is concerned and accommodation of public requests. The detailed designs are prepared by the contractor and the design engineers of PIC verify the same. Awareness programmes are also conducted in this regard. Utility structures which may be affected during construction has been identified during transect walks. These locations are being verified during detailed designs and suitable mitigation measures will be provided in the designs. Sample household survey covering more than 20% household was completed under Survey and Preliminary Engineering works.</p> <p>Transect walks have been conducted for all candidate roads during pre-construction stage. Community participation has been a key feature of these transect walks. Outcomes of the transect walks, maps and video footage have been provided to respective contractors to consider feasible features into the designs.</p>

<p>VII Safeguards – B. Involuntary Resettlement</p>	<p><b>54. Construction and maintenance.</b> During the construction phase, the PIC will be responsible for conducting semi-annual on-site social safeguard monitoring. During the maintenance phase, the PIC will conduct annual on-site social safeguard monitoring. The PIC should pay close attention to ensure that all grievances are addressed in a timely manner. Reporting templates can be found in the Resettlement Framework.</p> <p><b>55. Unanticipated impact.</b> A resettlement framework has been prepared (June 2017) to guide the preparation of unanticipated impact. If land is required for the rural roads component, the voluntary land donation system will be used. For land donation, specific procedural requirements involving comprehensive consultations with the communities have been prepared in Appendix 1 of the Resettlement Framework and the government will ensure that land donation is undertaken without coercion and documented in a transparent manner. Eminent domain will not occur if negotiation regarding land donation fails. Households will not donate more than 5% of land holding and no physical displacement will take place. The PIC will visit roads with land donation on a monthly basis until the land donation process is finalized. An independent monitor will be engaged to verify and certify the process has been done as per the Resettlement Framework. For all roads, civil works cannot commence until the right of way is free of encumbrance, meaning that the affected household must be fully compensated and/or assisted prior to dismantling or relocation. The PIU will be supported by the RDA's ESDD and a social safeguard team under the PIC.</p>	<p>PIC is paying close attention to address all the public grievances and monitoring onsite social safeguard.</p> <p>Complaint register is being maintained by Contractor with copy to PE (RDA) and SGRS (PIC).</p> <p>Land donation procedure is being followed in accordance with Appendix 1 of RF (Updated in June, 2017). A total of 116 of land donations have been taken place during the period under review: 17 number of individual MOUs, 04 numbers of common MOUs signed and 95 numbers of Consent Letters received.</p> <p>Details are appeared under land donation in the Section 6 in this report.</p> <p>No incident of eminent domain was recorded during the reporting period.</p>
---	--	---

C. Indigenous People	<b>56.</b> No indigenous people were identified during due diligence. In case of any adverse impacts identified during implementation, the RDA will ensure that the indigenous peoples' plan (IPP) is prepared in accordance with the IPPF, and the IPP is reviewed and approved by ADB before commencement of the relevant section of the civil works contract.	There are no roads that were passing close to or through settlement of indigenous people.
D. Grievance Redress Mechanism	<b>57.</b> Grievances from the affected people on social and environmental issues during project implementation will be addressed mainly through the existing local administrative system. Depending on the nature and significance of the grievances or complaints, grievances will be addressed at three levels. The first will be at the grassroots level where grievances will be directly received and addressed by the contractor, the PIC, or the PIU representative on the site. Grievances that are simple but still cannot be addressed at the grassroots level will be addressed at the level of the grama niladhari (village-level administrator). The grievance redress committee will be composed of the grama niladhari as chairperson, the PIU representative as secretary, a representative of the PIC, a representative of the contractor, a community member or religious leader, and a woman representative from among the community. More complex grievances that cannot be addressed at the grama niladhari level will be raised to the divisional secretariat level. The committee at the Divisional Secretariat level will include the Divisional Secretary as the chairperson, a representative of the PIU as secretary, grama niladhari, a representative of the PIC, a representative of the contractor, a representative of a nongovernment organization or community-based organization in the area, a community member or religious leader, and a woman representative from the community.	Grievance Redress Mechanism has been properly established in accordance with the guidelines stipulated in the RF and FAM. Accordingly, 10 GRCs at DS level have been established and 110 GRCs have been established at GN level during the period under review.  The project has received 434 public complaints during the reporting period.  The project has completely settled 232 public complaints out of 434 public complaints received and the rest 202 complaints are in the process of settling after agreeing the solutions.



<p>VIII. Gender and Social Dimensions</p> <p>A. Gender and Development</p>	<p><b>59.</b> A gender action plan (GAP) has been formulated for the MFF. Key gender mainstreaming activities for all tranches include the following: (i) engage at least 35% women in consultation during design; (ii) integrate features that increase road safety and meet the needs of the elderly, women, children, and the disabled; (iii) encourage the employment of local women as road construction workers; (iv) ensure at least 30% of local employees hired for road maintenance are women and that they receive equal wages for equal work; (v) conduct awareness trainings on road safety and HIV/AIDS and sexually transmitted infections with a minimum of 40% women participants; (vi) appoint gender focal persons at all levels; (vii) build knowledge and skills of the transport sector on gender and inclusivity; and (viii) develop an online grievance reporting mechanism and track sex-disaggregated data of complainants.</p> <p><b>60.</b> To ensure that these and other gender issues are addressed and complied with, the project implementation consultants will include a social and/or gender development expert. The PICs will provide monitoring support and the ESDD of the RDA will be responsible for the overall implementation of the GAP. Social safeguard and/or social officers in the PIUs will undertake tasks related to GAP implementation. Semi-annual monitoring reports of the GAP shall be prepared and submitted to ADB for disclosure.</p>	<p>The project has taken actions to implement the Gender Action Plan in accordance with the guidelines stipulated in the FAM.</p> <p>Details of the progress of GAP is appeared in Annexure 2 of this report.</p>
<p>VIII. Gender and Social Dimensions</p> <p>B. HIV/AIDS</p>	<p><b>62.</b> The RDA will ensure that all civil works contractors complete the following: (i) carry out awareness programs for labor on the risks of sexually transmitted diseases, HIV/AIDS, and human trafficking; and (ii) disseminate information at worksites on the risks of sexually transmitted diseases and HIV/AIDS as part of health and safety measures for those employed during construction. Contracts for all subprojects will include specific clauses on these undertakings, and compliance will be strictly monitored by the RDA with the support of construction supervision consultants during project implementation.</p>	<p>Conducting of HIV / AIDS prevention and Health Awareness programmes have been temporarily postponed due to current COVID - 19 pandemic situation.</p> <p>However, adequate measures have been taken to reduce the risk of COVID-19 pandemic outbreak at work places and work sites.</p>

Item/ Section/ Schedule	Description	Status of Compliance
VIII. Gender and Social Dimensions  C. Health	<b>63.</b> The RDA shall ensure that contractors provide adequately for the health and safety of construction workers and further ensure that bidding documents include measures on how contractors will address this, including an information and awareness-raising campaign for construction workers on sexually transmitted diseases, HIV/AIDS, and human trafficking.	Conducting of awareness on HIV/AIDS prevention & Health programmes and human trafficking programmes have been postponed due to COVID-19 pandemic situation.
D. Labour	<b>64.</b> Project construction is expected to generate employment opportunities for local communities during construction and maintenance phases. Men and women will be paid equally for equal work. Provisions are in the bidding documents for the contractors to ensure that all the civil works comply with core labor standards (e.g., no child labor; no bonded labor; no work discrimination regardless of gender, race, and ethnicity; and freedom of association and collective bargaining). Targets for employing women for construction and maintenance have been established in the GAP. The project implementation consultant will monitor the provisions.	All the contractors pay equal wages for equal work of men and women.  No child labour is used in this project.  The priority is given for local labour for employment.

### 3. COMPLIANCE WITH RESPECT TO GENDER ACTION PLAN (GAP)

Gender Action Plan (GAP) has been formulated for iRoad 2. Gender mainstreaming activities include (i) engage at least 35% women in consultation during design; (ii) integrate features that increase road safety and meet the needs of the elderly, women, children, and the disabled; (iii) encourage the employment of local women as road construction workers; (iv) ensure at least 30% of local employees hired for road maintenance are women and that they receive equal wages for equal work; (v) conduct road safety and HIV/STI awareness trainings with minimum of 40% women participants; (vi) appoint gender focal persons at all levels; (vii) build knowledge and skills of the transport sector on gender and inclusivity; and (viii) develop an online grievance reporting mechanism and track sex-disaggregated data of complainants.

To ensure that these and other gender issues are addressed and complied with, the PIC team is included with a full time Social, Gender and Resettlement (SGR) Specialist. ESDD of RDA has the overall responsibility in implementing the GAP, while the PIC support in monitoring the implementation.

#### 3.1 Gender participation in Grievance Redress Committees (GRCs) at GN level and DS level.

At the time of awareness campaign, women were more encouraged to participate at GRC meetings to involve in project process. In order to make the GRM process gender responsive the GRC includes a female member to represent the local community women. Further, when grievances or complaints are submitted to the GRC, both women and men complainants are treated equally and necessary measures is being taken to address the grievance in the best possible way.



Picture 01: Women participate in consultation in the field – Rd ID WGA 107, GA 02, Gampaha

**Table 3.1: Gender participation in GRCs at GND level**

District	Contract Package	No. of GRCs	Gender		Total Nos.	Female Percentage %
			Male	Female		
Gampaha	GA 01	08	138	54	192	28%
	GA 02	15	245	108	353	31%
	GA 03	12	116	37	153	24%
	GA 04	14	213	59	272	22%
Colombo	CL 01	12	154	60	214	28%
	CL 02	17	348	117	465	25%
	CL 03	07	84	31	115	27%
Kalutara	KL 04	06	99	40	139	29%
	KL 05	09	123	64	187	34%
	KL 06	10	189	130	319	41%
<b>Total</b>		<b>110</b>	<b>1709</b>	<b>700</b>	<b>2409</b>	<b>29%</b>

The above table shows an average percentage of 29 women have participated at 110 GRC meetings held at GN level during the period under review in Colombo, Gampaha and Kalutara districts of the Western Province.



Picture 02: Women participation at GRC meeting held GN level, GRC meeting – CL 02, Colombo



**Table 3.2: Gender participation in GRCs at DS level**

District	DS Division	No. of GRCs	Gender		Total Nos.	Female Percentage %
			Male	Female		
Gampaha	Kelaniya	01	07	03	10	30%
	Biyagama	01	07	02	09	22%
	Wattala	01	26	11	37	30%
	Ja-Ela	01	28	41	69	59%
	Katana	01	38	22	60	37%
Colombo	Moratuwa	01	15	05	20	25%
Kalutara	Madurawala	01	19	12	31	39%
	Bulathsinhala	01	17	17	34	50%
	Horana	01	20	11	31	35%
	Palindanuwara	01	21	15	36	42%
<b>Total</b>		<b>10</b>	<b>198</b>	<b>139</b>	<b>337</b>	<b>41%</b>

As depicted in the above table, 41% of women have participated at 10 GRCs establishment meetings held at 10 Divisional Secretariats during the period under review in the Western Province.



Picture 03: Women participation at a meeting held on establishment of GRC at Bulathsinhala DS office, Kalutara

**Table 3.3: Status of gender composition of staff of the Consultants, Contractors' staff and labour workforce.**

Working Location		Gender		Total Nos.	Female Percentage %
		Male	Female		
PMU	Colombo	47	20	67	30%
PIU	Colombo	16	04	20	20%
TL Office	Hokandara	19	08	27	30%
RE Offices	Gampaha (GA)	19	03	22	14%
	Colombo (CL)	14	03	17	18%
	Kalutara (KL)	17	03	20	15%
CE Offices	GA 01	10	03	13	22%
	GA 02	11	02	13	15%
	GA 03	12	01	13	08%
	GA 04	10	03	13	22%
	CL 01	08	05	13	38%
	CL 02	10	03	13	23%
	CL 03	10	03	13	23%
	KL 04	11	02	13	15%
	KL 05	10	03	13	23%
	KL 06	12	01	13	08%
Contractor's Offices Staff	GA 01	28	05	33	15%
	GA 02	30	02	32	06%
	GA 03	45	06	51	12%
	GA 04	26	04	30	12%
	CL 01	58	06	64	09%
	CL 02	32	03	35	09%
	CL 03	27	03	30	10%
	KL 04	66	08	74	11%
	KL 05	59	08	67	12%
	KL 06	34	04	38	11%
Contractor's Work Sites	GA 01	108	04	112	04%
	GA 02	121	00	121	00%
	GA 03	126	00	126	00%
	GA 04	101	00	101	00%
	CL 01	134	00	134	00%
	CL 02	53	02	55	04%
	CL 03	78	01	79	01%
	KL 04	121	18	139	13%
	KL 05	153	00	153	00%
	KL 06	65	01	66	02%
<b>Total</b>		<b>1701</b>	<b>142</b>	<b>1843</b>	<b>08%</b>

The above table shows 08% of female employees are in the workforce deployed at PMU, PIU. TL office, RE s offices, CE offices and Contractors.



Picture 04: Women at office work – GA 01, Contractor's office, Gampaha



Picture 05: Induction on safety work at Toolbox meeting - GA 01, Gampaha





Picture 06: Women assist to follow the COVID – 19 Guidelines in project activities



Picture 07: Women were more active in consultation – Selection of a lead away – WKL 223, KL 04, Kalutara

(State Minister, Chairman - PS, DS, PM, Agriculture Officers, PIC and PMU staff, Village leaders were present at the discussion.)



### **Constraints encountered in increasing female involvement in the Western Province**

- COVID - 19 pandemic drastically affected to leave out of house for women in particular, especially the Western Province has become the most vulnerable province in the country in terms of current pandemic situations.
- It is still the Sri Lankan customary and the cultural barriers do not allow women to engage in the construction field specially in the road works.
- Most of the women are not willing to work long hours since they may have to attend household commitments.

### **Action taken to promote female employment**

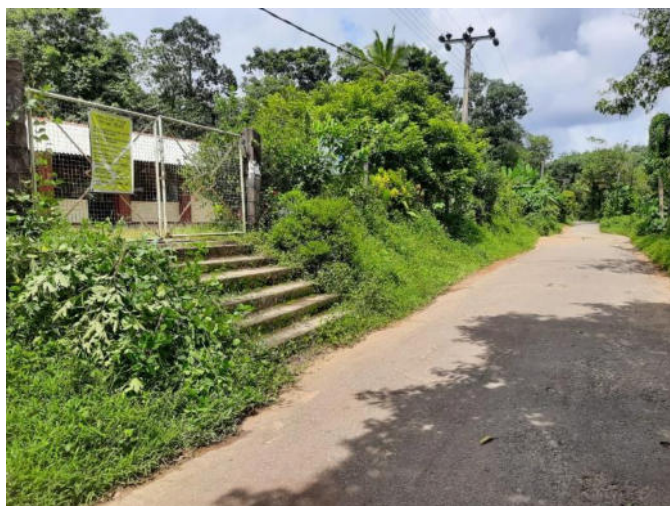
- Attractive salaries and incentives introduced by Contractors.
- Payment of equal wages to men and women for work of equal value.
- Providing attractive residential facilities nearby.
- Providing comfortable transport facilities.
- Advertise vacancies in the local area and other areas.
- Established friendly working environment.
- Workers are entitled to all public holidays and approved leave package.
- Comfortable working hours, women in particular.

Gender Action Plan (GAP) Implementation Matrix is appeared in the **Annexure 02**.

## **3.2 Elderly- Women- Children- Disabled (EWCD) Friendly Design**

### **a) Safer access to the school – WP/H -Malagala Maha Vidyalaya, Malagala, Padukka**

WP/H -Malagala Maha Vidyalaya is a school located adjacent to Malagala Yatawathura Rathmalgoda road (Rd.ID WCO 068) which is being improved by iRoad 2, PIC 07, WP. The Principal of the school has made a request to the project staff to pay special attention to change the road design with safer exit whereby ensures the safety of school community while using the school access (Ch. 0 + 040 – 0 +060 LHS). The project staff was then made to understand the safety risk facing every day due to direct exit to the public road from school by the school community, school children in particular. Having understanding that the project team has decided to provide a safer exit way for school children as an EWCD friendly feature.



Picture 08: Existing school access



Picture 09: Malagala Maha Vidyalaya, Malagala

Expected direct beneficiaries of the EWCD friendly design:

**Table 3.4: EWCD – Beneficiaries of the project;**

Type of beneficiaries	Male	Female	Total number	Percentage	
				Male	Female
Students	115	120	235	49%	51%
Teachers	02	20	22	09%	91%
Non – staff members	01	01	02	50%	50%
<b>Total</b>	<b>118</b>	<b>141</b>	<b>259</b>	<b>46%</b>	<b>54%</b>

Civil works have been commenced to address the issues during the reporting period.

**b) Safer access to the school - WP/H/Batuwangala Primary School, WKL 260 in KL 05 Contract Package, Kalutara.**

The entrance to the Batuwangala Primary School from road at chainage 0 + 998 – 1 + 012 RHS was through an old “entry steps structure” consisting of 10 steps starting from the edge of the road leading to the school premises. On the request the principal of the school on behalf of the school community, the project team decided to provide a safer exit way for school children as an EWCD friendly feature, a modified step structure consisting of “both sided entry /exit steps” so that these vulnerable children could use the safer exit to the road without meeting possible accidents. The school children around 100 (including 49 female students) who are vulnerable were facing a serious safety risk every day due to direct exit to the road from the school.



Picture 10: **Before**- Original status of the entrance to the school.



Picture 11: **After** – Completion of safety access to the school.

This structure has been completed during the last reporting period and completed during the period under review.

## 4. SOCIAL SAFEGUARDS ISSUES AND MITIGATION MEASURES IMPLEMENTED

### 4.1 Issues and Mitigation Measures Implemented

#### 4.1.1 COVID-19 Outbreak

The current novel coronavirus (COVID-19) pandemic outbreak, which began in December 2019 in Wuhan, Hubei Province, China presents a significant challenge for the entire world. The Sri Lankan first COVID-19 infected person was recorded in 11 March 2020 and gradually increased the number of COVID -19 victims in the country.

Health guidelines have been provided in order to reduce the pandemic risk at work places and work sites. In the iRoad 2, Western province at the outset.

Following guidelines were implemented at offices.

- 4.1.1.1 Regularly clean surfaces and objects with disinfectant.
- 4.1.1.2 Provided facilities for hand washing and hand sanitizers to employees and visitors.
- 4.1.1.3 Temperature monitoring of all employees and visitors.
- 4.1.1.4 Issue instructions to wear masks for all employees and visitors.
- 4.1.1.5 Ensure good respiratory hygiene in the workplace.
- 4.1.1.6 Display posters in the office premises.
- 4.1.1.7 Create awareness on precautionary measures and other relevant information among employees frequently.
- 4.1.1.8 Maintain a Visitor Register at the office to obtain contact details for contact tracing if required.
- 4.1.1.9 Avoid/minimize social events and food sharing.
- 4.1.1.10 Reduce number of meetings and number of participants.

The project has developed guidelines in compatible with the guidelines issued by the health authorities in order to reduce the risk at work places and work sites and instructed the Contractors to prepare individual Action Plans for their Contract Packages based on the guidelines issued by the PIC- 07 (WP). All the Contractors have developed individual Action Plans for their responsive Contract Packages to mitigate the COVID -19 outbreak.

A sample of implementation of site specific COVID – 19 Action Plan and Good practices in Gampaha district is appeared in **Annexure 03**.

#### 4.1.2 Introduction of concept of Context Sensitive Design (CSD).

As per to the ADB's Safeguards Policy Statement (SPS 2009), national laws and policies, any development for the country should not leave a set of people negatively affected in economic or physical



terms. As this project is linked with the rural population, it is best to develop a system where participation of community is considered at various stages of the project. Such approach enables to ensure the sustainability of the project facilities provided. In considering the fact that the involvement of all relevant stakeholders is of prime necessity, the project has introduced the concept of Context Sensitive Design (CSD) which provides a basis for shared vision and work to achieve early consensus. CSD recognizes that roadways must be carefully engineered to move traffic efficiently and safely, it asserts that these goals can be achieved without sacrificing the unique qualities of the community they intend to.

**Table 4.1: Summary of Design changes due to public requests**

District	Contract Package	No. of design changes made
Gampaha	GA 01	08
	GA 02	12
	GA 03	11
	GA 04	05
Sub total		<b>36</b>
Colombo	CL 01	30
	CL 02	00
	CL 03	02
Sub total		<b>32</b>
Kalutara	KL 04	04
	KL 05	12
	KL 06	05
Sub total		<b>21</b>
<b>Total</b>		<b>89</b>

**Table 4.2: Design changes made to the original design of roads due to public requests.**

Contract Package	S/N	ID No.	Name of the Road	Changes Made to the Original Design	Social/ Environment (S/E)	Discussed at GRC	
						GND (Y/N)	DSD (Y/N)
GA 01	01.	WGA 054	Alikegena Lansiyawatta Road	Retting wall Both side Ch. 0+187	S	Y	N
GA 01	02.	WGA 401	Amunukumbura Jambugahamulla Road	Constructed Shoe Drain Ch.1+310	E/S	Y	N
GA 01	03.	WGA 363	Pahala Mapitigama Keragala Mawatha	Construct bend improvement	S	Y	N

Contract Package	S/N	ID No.	Name of the Road	Changes Made to the Original Design	Social/ Environment (S/E)	Discussed at GRC	
						GND (Y/N)	DSD (Y/N)
GA 01	04.	WGA 363	Pahala Mapitigama Keragala Mawatha	New drainage system Ch.0+660	S/E	Y	N
GA 01	05.	WGA 363	Pahala Mapitigama Keragala Mawatha	New drainage Ch.1+715-1+835	S/E	Y	N
GA 01	06.	WGA 291	Buthpitiya ginigasma road	New drainage system Ch.0+680-0+690	S/E	Y	N
GA 01	07.	WGA 291	Buthpitiya ginigasma road	New drainage system Ch.0+350	S/E	Y	N
GA 01	08.	WGA 291	Buthpitiya ginigasma road	New drainage system Ch.0+345	S/E	Y	N
GA 02	09.	WGA 136	Weyangoda Diulgahahandiya Road3+700	Provide new culvert	S/E	Y	N
GA 02	10.	WGA 137	Weyangoda Diulgahahandiya Road 3+701	Provide U drain with cover slab	S/E	Y	N
GA 02	11	WGA 332	St anthony road Nittabuwa	Adjust the road ramp to LHS	S/E	Y	N
GA 02	12.	WGA 338	Welagedara Jayamawatha	Road improvement (Toe wall and Embankment)	S	Y	N
GA 02	13.	WGA 338	welagedara Jayamawatha	Provide a new culvert	S/E	Y	N
GA 02	14.	WGA 338	Welagedara Jayamawatha	Increase the culvert capacity	S/E	Y	N
GA 02	15.	WGA 358	Kalatuwawa thapowana Road	Increase the culvert capacity	S/E	Y	N
GA 02	16	WGA 107	Loluwagoda harankawa road	Road bend removing to prevent to road accident	S	Y	N
GA 02	17.	WGA 357	Bopatta Piriwena road	Change the culvert location	S/E	Y	N
GA 02	18.	WGA 350	Katuwasgoda road	Provide a new culvert CH.0+120	S/E	Y	N
GA 02	19.	WGA 341	Dadagamuwa Gamamedra road	Change the culvert location 0+325	S/E	Y	N
GA 02	20.	WGA 318	Pahalamottawatta nearby Upasena home	Provide a new drain system	S/E	Y	N

Contract Package	S/N	ID No.	Name of the Road	Changes Made to the Original Design	Social/ Environment (S/E)	Discussed at GRC	
						GND (Y/N)	DSD (Y/N)
GA 03	21.	WGA 033	Imbulgoda ihalayagoga Moragoda road	Provide speed humps In front of the school	S	Y	N
GA 03	22.	WGA 033	Imbulgoda ihalayagoga Moragoda road	Shift the culvert	S	Y	N
GA 03	23	WGA 032	Horagolla Makilangamuwa road	Provide a new drain system	S/E	Y	N
GA 03	24.	WGA 032	Horagolla Makilangamuwa road	Request to the asphalt the by road section adjacent to school boundary wall.	S	Y	N
GA 03	25	WGA 014	Nedun road	Provide a leader way	S/E	Y	N
GA 03	26.	WGA 014	Nedun road	Provide a leader way	S/E	Y	N
GA 03	27.	WGA 072	Ragama Ketakewatta road	Rehabilitate shoe drain and lay asphalt at the edge of temple boundary wall as a parking area	S/E	Y	N
GA 03	28.	WGA 264	Siyabala pitiya Lokingamuwa road	Provide drain system Ch.0+800	S/E	Y	Y
GA 03	29.	WGA 007	AKC Amarasinhe Mawatha	Provide a retaining wall	S	Y	N
GA 03	30.	WGA 011	Imbulgoda saliya batik road	provide drain system	S/E	Y	N
GA 03	31.	WGA 011	Imbulgoda saliya batik road	Provide drain system	S/E	Y	N
GA 04	32.	WGA 210	Road from Katukenda up to maningamuwa Alugolla junction to Mallawagedara road	Widening the existing culvert	S/E	Y	N
GA 04	33.	WGA 210	Road from Katukenda up to maningamuwa Alugolla junction to Mallawagedara road	Provide the passing bay	S	Y	N

Contract Package	S/N	ID No.	Name of the Road	Changes Made to the Original Design	Social/ Environment (S/E)	Discussed at GRC	
						GND (Y/N)	DSD (Y/N)
GA 04	34.	WGA 213	Wewapara from Aluthapola road up to Katuwellegama temple	Provide proper drain path	S/E	Y	N
GA 04	35.	WGA 213	Wewapara from Aluthapola road up to Katuwellegama temple	Provide proper drain path	S/E	Y	N
GA 04	36.	WGA 239	Thammita delwagura road	Remove the existing culvert	S/E	Y	N
CL 01	37.	WCO 085	Weliwita Wewa Road	Flood prone area, Culvert constructed, CH 1+340	E	Y	N
CL 01	38.	WCO 058	Hermanmainer Road	Conserved the Tamarind tree, Curved the Line drain (Tamarindus indica), CH 0+450 RHS	E	N	N
CL 01	39.	WCO 058	Hermanmainer Road	Rehabilitate the culvert to facilitate the water flow, CH 0+805	E	Y	N
CL 01	40.	WCO 058	Hermanmainer Road	The culvert was shifted to conserve the water more efficiency, CH 0+740	S/E	N	N
CL 01	41.	WCO 084	Weliwita, Shantha Mariya Road	Flood prone area, Road was developed by concrete with culvert to facilitate the water more efficiency, CH 1+225	S/E	Y	N
CL 01	42.	WCO 177	Mattegoda-Kirigampamunuwa Main Road	Footpath construction in WCO 177	S/E	Y	N
CL 01	43.	WCO 101	Korathota Alwiswatta madha	A new cross drain was constructed, CH 0+505 LHS	S/E	N	N
CL 01	44.	WCO 058	Hermanmainer Road	Provide an access, suitable to take heavy vehicles to their vehicle yard CH 1+278 RHS	S	N	N
CL 01	45.	WCO 058	Hermanmainer Road	L drain was constructed at WCO 058, CH 0+991 RHS	S/E	N	N
CL 01	46.	WCO 058	Hermanmainer Road	A cross drain (CH 0+261) was built by connecting drains that come from on the left side of the road	E/S	Y	N
CL 01	47.	WCO 058	Hermanmainer Road	A Ladderway was constructed, CH 0+260 RHS	E/S	Y	N
CL 01	48.	WCO 058	Hermanmainer Road	U-drain was constructed, CH 0+060 RHS	S	N	N
CL 01	49.	WCO 101	Korathota Alwiswatta madha	A cross drain was constructed, CH 0+730	S/E	N	N
CL 01	50.	WCO 278	Ebert lane	To put cover slabs on the drain in front of the school, CH 0+930 LHS	E/S	Y	N



Contract Package	S/N	ID No.	Name of the Road	Changes Made to the Original Design	Social/ Environment (S/E)	Discussed at GRC	
						GND (Y/N)	DSD (Y/N)
CL 01	51.	WCO 101	Korathota Alwiswatta madha	Dish drain was constructed to stop water flow to their land, CH 0+405 LHS	S	N	N
CL 01	52.	WCO 101	Korathota Alwiswatta madha	Arranged an accessway, CH 0+005 LHS	S/E	N	N
CL 01	53.	WCO 101	Korathota Alwiswatta madha	Shoe drain and u drain have given to necessary places, CH 0+000-0+250	S	N	N
CL 01	54.	WCO 085	Weliwita Wewa Road	Provide an adequate entrance to a land	S	N	N
CL 01	55	WCO 084	Weliwita Shantha Mariya Road	Provided a cross drain, CH 0+107	E/S	Y	N
CL 01	56.	WCO 084	Weliwita, Shantha Mariya Road	Granted, 10m length will construct in order to prevent the water flow to their house, CH 0+050 LHS	E/S	N	N
CL 01	57.	WCO 084	Weliwita, Shantha Mariya Road	Side wall will construct after the asphaltic concrete done, CH 0+390 RHS	E	N	N
CL 01	58.	WCO 084	Weliwita, Shantha Mariya Road	New water pipes were implemented, CH 1+250 LHS	E/S	Y	N
CL 01	59.	WCO 177	Mattegoda-Kirigampamunuwa Main Road	Accessway was concreted, CH 1+760 RHS	S	Y	N
CL 01	60.	WCO 101	Korathota Alwiswatta madha	Shoe's drain was constructed to stop shoulder erosion, CH 0+600 RHS	S/E	N	N
CL 01	61.	WCO 101	Korathota Alwiswatta madha	Arranged U-drain, CH 0+525 LHS	E	N	N
CL 01	62.	WCO 183	Welakumbura mawatha	Constructed L-drain and Dish drain for access, CH 0+735 LHS	S/E	N	N
CL 01	63.	WCO 120	Sri Nanadarama road	Provide a proper drain line and rehabilitate the culvert CH 1+000	S	Y	N
CL 01	64.	WCO 120	Sri Nanadarama road	To build the drainage system at beginning of Rukmal trees road on Sri Nandarama road, CH 0+860 LHS	E/S	Y	N
CL 01	65.	WCO 120	Sri Nanadarama road	Culvert was constructed, CH 1+020	E/S	Y	N
CL 01	66.	WCO 058	Hermanmainer Road	Conserved the Nika tree, (Vitex negundo), CH 0+701 RHS	E	Y	N
CL 02		No Design Changes made to the Original Designs of Roads due to Public Requests up to 2021/06/31					
CL 03	67.	WCO 221	Welikanna - Milladanda - Elamalawala Road	Cross drain was shipped protect a Rambutan tree. Ch 2+255	E	N	N
CL 03	68.	WCO 224	Kahahena - Kadugoda Road	Cross drain was shipped protect a jack tree. Ch 2+375	E	N	N

Contract Package	S/N	ID No.	Name of the Road	Changes Made to the Original Design	Social/ Environment (S/E)	Discussed at GRC	
						GND (Y/N)	DSD (Y/N)
KL 04	69.	263	Rathmalgoda - Poruwadanda Road	Decided to construct "U" drain with cover slabs at 3+330 - 3+360 RHS	S	N	N
KL 04	70.	223	Kindelpitya - Panadura Road	Decided to Place 2* 900 mm Hume pipe at 1+200 for environment corrido	E	N	N
KL 04	71.	263	Rathmalgoda - Poruwadanda Road	Decided to shift the road LHS and concrete the section (1+960 - 2+020) due to safety issue	S	N	Y
KL 04	72.	260	Kakuladola - Batugampola - Kidelpitiya Road	Decided to extend the road up to excising Asphalt	S	Y	Y
KL 05	73.	WKL 268	Pethigamuwakanda Main Road	Decided to Extend the Road Length from 0+000 - 0+525 and 2+320 - 2+641	S	Y	N
KL 5	74.	WKL 258	Panagoda Uduwara	Changes made to the original design 1+940 - 2+200 (Center Line Shifting)	E	Y	N
KL 05	75.	WKL 255	Halhota - Manana Road	Decided to Extend the Road Length from 5+250 to 6+810	S	Y	N
KL 05	76.	WKL 258	Panagoda Uduwara Road	To protect a BO Tree 1+390 RHS	S/E	Y	N
KL 05	77.	WKL 084	Warakagoda Gamagoda Road to Kottayahena	Decided to Extend the Road Length by 554.018m form the End of the road	S	Y	N
KL 05	78.	WKL 085	Batawala Road	Decided to Extend the Road Length by 613.52m form the End of the road	S	Y	N
KL 05	79.	WKL 185	Kelesgamuwa Road	Flood Impacts to the road uses and houses 1+834 B/S (New Cross drain Established)	S/E	Y	N
KL 05	80.	WKL 185	Kelesgamuwa Road	2+158 RHS Flood impacts to Nearby school. (New drain introduced)	S/E	Y	N
KL 05	81.	WKL 185	Kelesgamuwa Road	Passing Bay according to the Farmers Request	S	Y	N
KL 05	82.	WKL 048	Serupita pitawila Road	Proposed 2 Culverts (1+675) to mitigate flood impacts introduced 4 culverts	S	YY	N
KL 05	83.	WKL 255	Halhota - Manana Road	Paddy field Tractor Access (2+533 LHS)	S	Y	N
KL 05	84.	WKL 258	Panagoda Uduwara Road	Paddy field Tractor Access (1+600 LHS)	S	Y	N
KL 06	85.	WKL105	Mathugama Manana Bopitiya Road	Changes made to the original design Culvert shift – ch.1+296	E	Y	N

Contract Package	S/N	ID No.	Name of the Road	Changes Made to the Original Design	Social/ Environment (S/E)	Discussed at GRC	
						GND (Y/N)	DSD (Y/N)
KL 06	86.	WKL 105	Mathugama Manana Bopitiya Road	Setting up a retaining wall 3+810 LHS Road	E	Y	N
KL 06	87.	WKL093	Pallegodawaththa Road	Changed concrete location Ch.0+970 – End section	E	Y	N
KL 06	88.	WKL097	Walipanna Uragoda Road	The centerline was slightly shifted	E	Y	N
KL 06	89.	WKL 119	Barodelwatta Road	Hum pipe Culvert Changed to Box Culvert 0+242	S	Y	N



Picture 12: CSR programe, Sri Shobitha Temple, KL 05 contract package, Kalutara





Picture 13: Design changes -Passing Bay – Rd ID WKL 185, Ch. LHS 1 + 175, KL 05, Kalutara



Picture 14: Changed the culvert Section at WCO 085, CH 1+340, CL 01, Contract package, Colombo





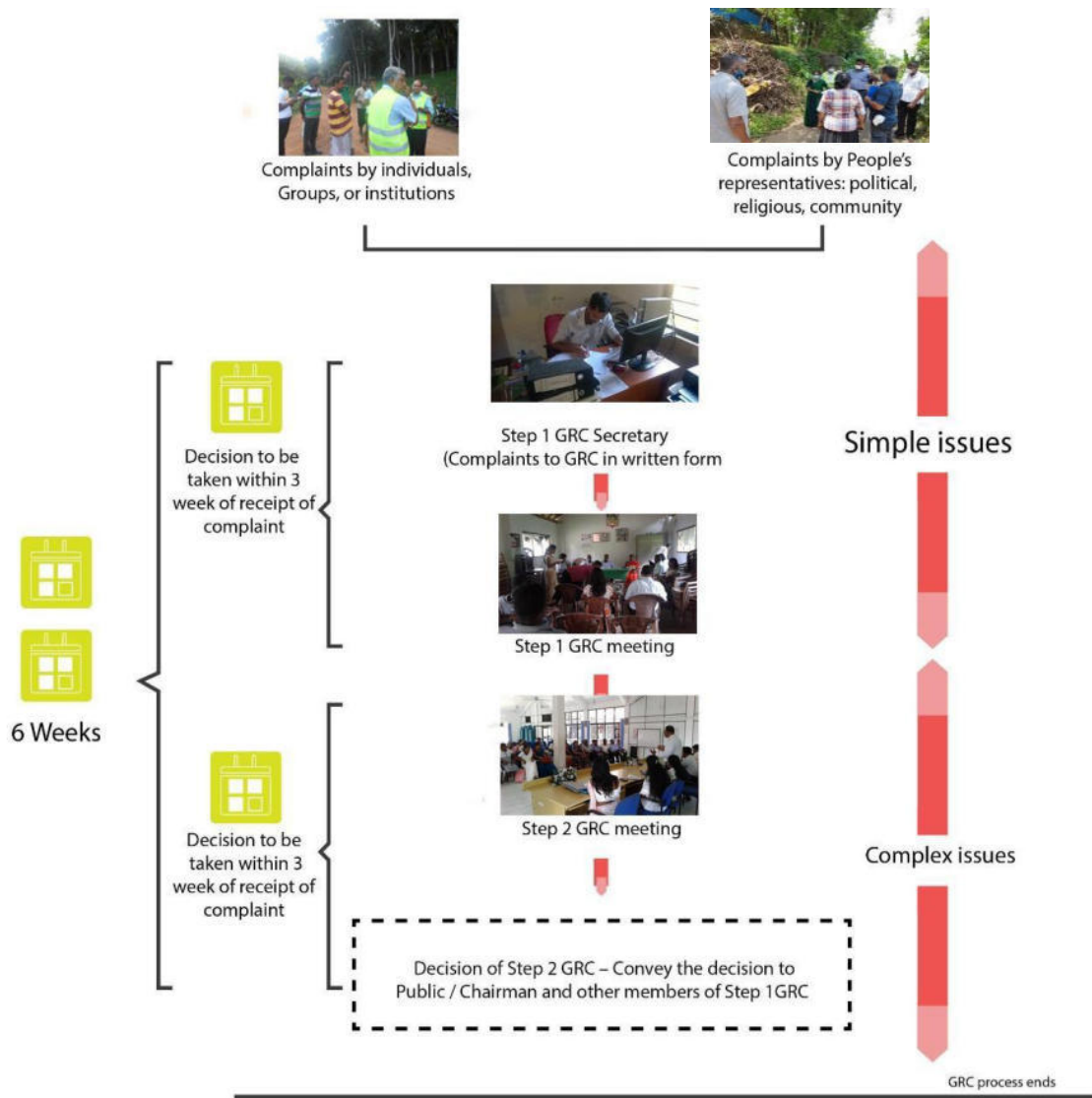
Picture 15: Shifted culvert at WCO 058, CH 0+740, CL 01- Contract package, Colombo



Picture 16: Road design changed to shift the road LHS due to safety issue, Rd ID WKL 066, 2+000, KL 04, Kalutara

## 4.2 Grievance Redress Mechanism (GRM)

As per section VI of Resettlement Framework (RF), Grievance Redress Mechanism (GRM) has been established. GRM is an arrangement for receiving, evaluating and facilitating the resolution of affected person's complaints, suggestions, requests and grievances on social and environmental performances of the project. Affected persons need a trusted way to voice and resolve project related concerns and hence the project has established an effective GRM. The main objective of establishment of GRM is to support genuine claimants to resolve their problems through mutual understanding and consensus reaching process with relevant parties.



**Figure 4.1:** GR process

Depending on the nature and significance of the grievances or complaints, grievances will be addressed at three levels. The first will be at the grass roots level where complaints will be directly received and addressed by the contractor, PIC or PIU representative on site. Grievances which are simple but still cannot be resolved at the grass roots level will be resolved at the Grama Niladhari (GN) level. More

complex grievances which cannot be resolved at the GND level will be addressed at the Divisional Secretariat Division (DSD) level. There will be GRCs at the GN and DS levels.

This is in addition to the available legal institutions for resolving appeals from public against the disagreeable decisions.

In addition, a contact person is designated to receive complaints within the PIU to address all the concerns and grievances of the local communities and affected parties. Contact details of relevant officers appears in the public notice displayed on the notice board of all GND offices in the project area.

#### 4.2.1 Establishment of GRCs at Grama Niladhari Division (GND) Level and Divisional Secretariat Division (DSD) level

**Table 4. 3: Establishment of Grievance Redress Committees (GRCs)**

District	Contract Package	Total No. of DSDs	GRCs at DSD level			Total No. of GNDs	GRCs at GND level		
			Established up to 31 Dec. 2020	Established during the period (01 Jan. to 30 June 2021)	Balance GRCs to be established		Established up to 31 Dec. 2020	Established during the period (01 Jan. to 30 June 2021)	Balance GRCs to be established
Gampaha	GA 01	04	02	02	00	33	09	08	16
	GA 02	02	02	00	00	47	12	15	20
	GA 03	05	02	03	00	44	09	12	23
	GA 04	01	01	00	00	38	09	14	15
<b>Sub Total</b>		<b>12</b>	<b>07</b>	<b>05</b>	<b>00</b>	<b>162</b>	<b>39</b>	<b>49</b>	<b>74</b>
Colombo	CL 01	06	02	01	03	41	05	12	24
	CL 02	02	02	00	00	40	07	17	16
	CL 03	01	01	00	00	38	04	07	27
<b>Sub Total</b>		<b>09</b>	<b>05</b>	<b>01</b>	<b>03</b>	<b>119</b>	<b>16</b>	<b>36</b>	<b>67</b>
Kaluthara	KL 04	04	02	02	00	28	06	06	16
	KL 05	05	03	01	01	39	15	09	15
	KL 06	05	02	01	02	30	05	10	15
<b>Sub Total</b>		<b>14</b>	<b>07</b>	<b>04</b>	<b>03</b>	<b>97</b>	<b>26</b>	<b>25</b>	<b>46</b>
<b>Total</b>		<b>35</b>	<b>19</b>	<b>10</b>	<b>06</b>	<b>378</b>	<b>81</b>	<b>110</b>	<b>187</b>

As depicted in the above table, 19 GRCs at DS level out of 35 and 81 GRCs at GND level out of 378 have been established up to the reporting period.

During the period under review, it was able to establish 10 GRCs at DS level and 110 GRCs at GN level, amidst confronting the second and third Waves of COVID-19 pandemic situation which has been severely affected the performance of project activities, formation of GRCs in particular.



#### 4.2.2 Establishment of GRCs at Grama Niladhari Division (GND) Level

GRCs are being established at all GNDs (378 nos.) in the project area with the objective of finding solutions for the Complaints that cannot be solved at grass root level.

The composition of membership of GND level GRCs consists of the Grama Niladhari in the Division (Chairman), Project Engineer (Secretary) being the representative of the PIU, Site Engineer (Member) representing the Supervision Consultants, Environment Officer (Member) representing the Contractor, Leader of a Voluntary Organization/ Non-Governmental Organization (Member), Religious Leader of the area (Member) and a woman leader of a women organization functioning in the area. In addition, Grama Niladhari may invite any government officer of the division to participate at meetings as and when required. GRC meetings will not be held regularly like other societies. Meetings will be held only when a public complaint has to be settled at GRC level.



Picture 17: GRC establishment – GN level, WGA 238, GA 04, Gampaha (During second wave)

#### 4.2.3 Establishment of GRCs at Divisional Secretariat Division (DSD) level

GRCs are being established at all Divisional Secretary Divisions (35 nos.) in the project area with the objective of finding solutions for the complaints that cannot be resolved at GND level.

The composition of membership of DSD level GRCs consists of the Divisional Secretary of the area (Chairman), Project Engineer (Secretary) being the representative of the PIU, Relevant Grama Niladhari (Member), Site Engineer (Member) representing the Supervision Consultants, Environment Officer (Member) representing the Contractor, Leader of a Voluntary Organization/ Non-Governmental Organization (Member), Religious Leader of the area (Member) and a women leader of a women organization in the area. In addition, Divisional Secretary may invite any government officer of the division to participate at meetings as when required.





Picture 18: GRC establishment – DS level, Horana, KL 04, Kalutara

In addition to addressing public grievances, GRCs may help to share the information with community and to use indigenous knowledge of the local people to enrich the road designs with appropriate technologies.

#### **4.2.3.1 Strategies introduced for establishment of GRCs under COVID - 19 Pandemic situation**

At the outset, the project has planned to carry out a comprehensive public awareness campaign using multiple strategies before forming the GRCs. In the meantime, COVID -19 Pandemic outbreak drastically disrupted the general procedure of establishment of GRCs at both DS and GND levels. Since, the COVID 19 Pandemic outbreak severely affected the Western Province, PIC-07 happened to look for alternative strategies to establish GRCs even under COVID -19 pandemic situation.

Accordingly, PIC-07, WP was able to develop effective alternative strategies to establish GRCs under second and third Waves of COVID -19 with the guidance of Safeguard Specialist of SLRM, ADB, Sri Lanka. We have been practicing the new strategy to cope with the present COVID-19 pandemic situations.

#### **Constraints encountered in formation of GRC's,**

As per the restrictions imposed by the Special Taskforce established on COVID -19 prevention and the health authorities, it was unable to hold public meetings during the second and third Waves of COVID - 19 pandemic situation during the period under review. Hence, the project applied different strategies to establish GRCs at DS or GN levels and to create public awareness.

## Alternative Strategies used to establish GRCs and public awareness

To cope with the unforeseen situation in respect of the establishment of GRCs and public awareness, the following different strategies have been applied during **second and third Waves** of COVID -19 pandemic.

### 1). Strategy followed during the Second wave of COVID -19

- a. Followed COVID - 19 Guidelines issued by the health authorities and other safety instructions imposed by the government.
- b. Held meetings with essential government field-based officers, project officials, representatives from local political authorities and selected community leaders.
- c. Awareness creation among immediate residents of the road, making announcements through Public Addressing Systems (PAS).
- d. Displayed Public Notices at GN offices and other community attracted places like community centers, religious places, CO-OP outlets etc.
- e. Distribution of hand bills / brochures to every household living along the particular road. Hand bills / brochures bring the important information about the project, how public can forward their grievances to the project and contact details of essential officials of the project including Project Engineer (PE).



Picture 19: GA 02, Rd ID WGA 136, Gampaha district

### 2). Strategy followed during the Third Wave of COVID 19

- a. Followed COVID-19 Guidelines issued by the health authorities and other safety instructions imposed by the government.
- b. Informal discussions have been held with limited number of essential officials and with local political representatives just before the commencement of project activities in the area. Formal GRC meetings have not been held during the Third Wave of COVID – 19. GNN, Project Engineers (PEs),



Project Managers (PM) / representatives and officials from Consultant, PIU and local political representatives were contacted through phone calls / Emails. / SMS/ WhatsApp etc.

- c. Community awareness have been carried out only through public announcements using Public Addressing Systems (PAS), displaying public notices and distribution of brochures.



Picture 20: Brochure distribution, WGA 334, GA 02, Gampaha



Picture 21: Brochure distribution – WKL 153, KL 05, Kalutara



Picture 22: Public Announcement – WGA 334, GA 02, Gampaha



Picture 23: Public Announcement – WKL 153, KL 05, Kalutara

#### 4.2.4 Receiving Public Complaints

Public complaint denotes: Requests, Suggestions, Grievances and Complaints. Public complaints from the affected people on social and environmental issues during project implementation will be addressed mainly through the existing local administrative system. Depending on the nature and significance of the grievances or complaints, will be addressed at two levels established at GN and DS by the project. Some



complaints will be handled at the grass roots/ site level before the GN level. Simple and easily manageable complaints will be addressed at the Grama Niladhari (GN) level and more complex complaints will be addressed at the Divisional Secretariat (DS) level.

#### **(a) Public Awareness;**

In addition to the community awareness meetings held at the commencement of the project, a public notice developed in local language is being displayed at community attracted places in the project area. The main purpose of the notice is to create awareness among communities on the project, understand to what extent the community can involve in project activities and how to make complaints, suggestions and requests to the project. The public notice gives the key information about the project and contact numbers of relevant officers including web details ([iroad.rda.gov.lk/iroad](http://iroad.rda.gov.lk/iroad) ii/) of the project.

#### **(b) Channels of Receiving Public Complaints**

A system of channels has been established to receive public complaints by the project. The public is clearly informed that they can follow any of the following channels in submitting their complaints to the project.

##### **i. Complaints Box**

Availability of complaint box at the site which has been identified as one of the effective methods to get views of communities prior to the designing stage. Complaint boxes have been installed at Contractor's site offices in all Contract Packages or GN offices and the public are expected to put their written complaints in to the Complaint box. Complaints are being daily collected from the box at the end of each day.



Picture 24: Rd ID WCO 84, CO-OP shop, Colombo

##### **ii. Office of Grama Niladhari (GN)**

Grama Niladhari (GN) is the village level government administrator. GN office is the most important government village level office of the area and almost all the residents frequently visit this office. On the other hand, GN is the chairman of the GRC established under the project at village level. Hence, the project has identified that as one of the prominent places to collect public complaints and public was made aware to hand over their



Picture 25: Panagoda GN office, KL 05, Kalutara

complaints to the GN of the area at his / her office.

### iii. Office of the Divisional Secretary

Divisional Secretary (DS) is the Government administrative officer at Divisional Level. DS is also playing the role of Chairman of Grievance Redress Committee (GRC) established under the project at Divisional Secretary level (DSD). A public notice is also displayed at each DS office in the project area and public can submit their written Complaints to the DS office.



Picture 26- Millaniya DS office, KL 05, Kalutara

### iv. Contractors Offices

Contractors offices which are located in the relevant Contract Packages generally occupied by the Project Manager and the staff directly involved in project activities. Public Complaint boxes are also installed at every Project Managers' offices. Hence, the public can comfortably forward their complaints to the contractors' offices.



Picture 27- Contractor's office, GA 01, Gampaha

### v. Field staff

In addition to the above channels, all the field staff of the project is instructed to accept public grievances and hand them over to the Project Engineer (PE)/ Environment Officer (EO) /Social Safeguard Officer (SSO) on the same day or in failing which the following day for necessary action.

### (c). Maintenance of Records for Public Complaints

Maintenance of relevant records is considered as a prime requirement. All the received complaints are being registered at the Project Manager's office of the Contractors. Social Officer of the Contractor is mainly responsible for maintaining the Complaint Register. The social Officer is also responsible to inform the relevant officials about the complaints for further proceedings.



**Table 4.4: Classified summary of Public Requests, Suggestions and Complaints**

District	Contract Package	No. of Roads	No. of Requests	No. of Suggestions	No. of Complaints	Total	No. Attended	No. Completely settled	Solution in progress
Gampaha	GA 01	09	35	03	05	43	43	12	31
	GA 02	11	16	00	04	20	20	11	09
	GA 03	10	23	02	02	27	27	21	06
	GA 04	05	16	00	00	16	16	03	13
Sub Total		35	90	05	11	106	106	47	59
Colombo	CL 01	12	46	07	01	54	54	44	10
	CL 02	13	35	00	10	45	45	13	32
	CL 03	12	39	02	09	50	50	27	23
Sub Total		37	120	09	20	149	149	84	65
Kalutara	KL 04	08	89	04	04	97	97	70	27
	KL 05	15	56	00	05	61	61	25	36
	KL 06	10	15	00	06	21	21	06	15
Sub Total		33	160	04	15	179	179	101	78
Total		105	370	18	46	434	434	232	202

The PIC-07 (WP) received 434 public complaints during the reporting period, out of which 232 complaints have already been settled and the rest 202 is being in the process of resolving. Those complaints which are being in the process of settling, involve in construction work. Hence, those complaints (202nos.) could not be completely settled soon. A notable thing is that the highest majority of complaints are in the nature of “requests” (85%).

**Table 4.5: Addressing Complaints at three levels**

District	Contract Package	No. of Complaints (Requests, Suggestions, Complaints)	Solution Agreed		Settled at grass root level (1)	Settled at GND level (2)	Settled at DSD level (3)	Settled at PC level (4)
			Solution in progress	Completely settled				
Gampaha	GA 01	43	31	12	43	00	00	00
	GA 02	20	09	11	20	00	00	00
	GA 03	27	06	21	26	00	01	00
	GA 04	16	13	03	16	00	00	00
Sub total		106	59	47	105	00	01	00

Colombo	CL 01	54	10	44	50	04	00	00
	CL 02	45	32	13	43	02	00	00
	CL 03	50	23	27	50	00	00	00
Sub total		149	65	84	143	06	00	00
Kalutara	KL 04	97	27	70	95	01	01	00
	KL 05	61	36	25	60	01	00	00
	KL 06	21	15	06	20	01	00	00
Sub total		179	78	101	175	03	01	00
Total		434	202	232	423	09	02	00

A notable thing is that the most of the complaints have been settled at site level (97%) as depicted in the table above.



Picture 28: Public consultation and addressing a public complaint – KL 05, WKL185, Kalutara

## 5. HIV/AIDS PREVENTION AND HEALTH AWARENESS PROGRAMMES AND ROAD SAFETY AWARENESS PROGRAMMES

As per the Contract Document Volume 3 S.Cl.108.3 and Volume 5A BOQ pay item 108.3 (1) the contractors have to conduct HIV/AIDS Prevention and Health Awareness programmes to all site staff, labourer and the immediate local communities via an approved service provider, in accordance with the S.Cl.6.7 of Conditions of Contract and the need of providing awareness on STD including HIV/ AIDS and human trafficking for civil works employees and communities is also specified under item 1.6 of GAP.

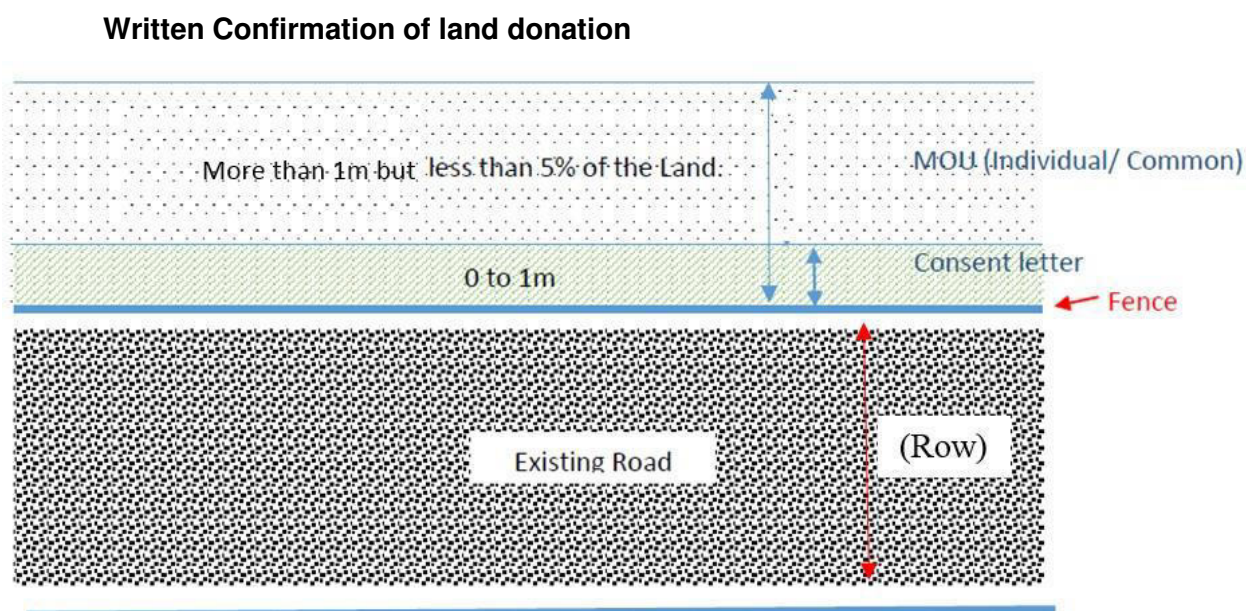
However, due to prevailing COVID-19 pandemic outbreaks, it was decided to temporarily suspend the conducting of HIV/AIDS Prevention and Health Awareness programmes as well as Road Safety Awareness (RSA) Programmes during the reporting period in the Western Province. Hence, HIV/AIDS Prevention and Health Awareness programmes and RSA programmes have not been so far conducted by iRoad 2 PIC-07 (WP).

## 6. LAND DONATION

Paragraph five (5) of the Resettlement Framework (RF) for the iRoad 2 program states that “for the rural roads improvements will be undertaken completely within the existing Right of Way (ROW) which is between 2.5m to 5.5m”. However, in paragraph nine (9) it states that “voluntary land donation will be used if additional strip of private land is required”. Appendix 1 of the RF further explains that “negotiated settlement or Voluntary land donation are two methods that could be used to take small strips of private land from neighbouring land lots for this investment program. Under both approaches RDA (provincial PIU) and relevant local authority shall not cause any permanent physical or economic displacement of the occupant of such land. Also, it should be clearly proved that such contribution of private land will clearly benefit the community who directly uses such road”. The basic principles are the following:

- that the project benefits will realistically offset the size of the donated land;
- in case negotiations for voluntary land donation fail, eminent domain or other powers of the state will not be used;
- a maximum of 5% of land can be donated, particularly for the vulnerable households; and for households donating land, no physical displacement will take place

As per Appendix 1 of the Resettlement Framework (RF), written confirmation is required for the donation made by the land owners.



**Figure 6.1:** Written confirmation of land donation

If any land owner is willing to donate a strip of his/her land for the improvement of roads that should be confirmed by a written document. As illustrated in the above diagram, if the width of such land strip is more than 01 meter, relevant Project Engineer (PE) shall have to enter in to a Memorandum of Understanding (MOU) with the land owner. In this regard, PE shall ensure that the donated land strip is less than 5% of the owner’s entire land as per Resettlement Framework (RF).

If the width of such land strip is less than 01 meter, PE shall obtain a duly signed letter of consent from the land owner.

The above system has been adopted to avoid confusions as to what level the agreements will be signed. This system is currently practicing in PIC -07 (WP).

## 6.1 Status of Land Donation

In the implementation of the iRoad 2, it was identified that there had been occasions where additional land strips were needed to carry out the road improvement works.

Hence, the project has followed the procedure as per guidelines stipulated in the RF for land donation as follows;

- Disseminate information to all relevant agencies on project information and the land donation concept. Continuous public awareness on land donation process has encouraged people to involve in project activities positively. Methods that are being used to create awareness among public and other stakeholders are One on One discussions, Focus Group Discussions (FGD) and GRC meetings. A Public Notice has been developed in local language in accordance with the guidelines laid down under Appendix 1 of the Resettlement Framework (RF).
- Identify and verify the land to be donated.
- Raise awareness and undertake meaningful consultation and negotiation with APs.
- Signing of Memorandums of Understanding (MOUs) by the land owners and the relevant Project Engineers. (This activity ensures the transparency through written confirmation.)

Memorandums of Understanding (MOUs):

The project has introduced two types of MOUs

- a) MOU to be signed by a single private owner and
- b) MOU to be signed by group of private land owners.

During the period under review, 17 individual MOUs. 04 numbers of common MOUs signed and 95 Consent Letters have been received with regard to land donation. The total land donations are amounted to 116 during the reporting period in the PIC-07 (WP).





Picture 29: Land donation, KL 05 contract package, Kalutara

Table 6.1: Summary of Land donation

District	Contract Package	MOU individual	MOU common	Consent letters
Gampaha	GA 01	00	00	21
	GA 02	00	03	07
	GA 03	00	00	17
	GA 04	01	00	00
Sub total		<b>01</b>	<b>03</b>	<b>45</b>
Colombo	CL 01	00	00	01
	CL 02	00	01	01
	CL 03	00	00	05
Sub total		<b>00</b>	<b>01</b>	<b>07</b>
Kalutara	KL 04	00	00	00
	KL 05	00	00	28
	KL 06	16	00	15
Sub total		<b>16</b>	<b>00</b>	<b>43</b>
<b>Total</b>		<b>17</b>	<b>04</b>	<b>95</b>

The number of land donations is 116. Out of which 17 nos. are Individual MOUs, 04 common MOUs, and 95 are consent letters.

**Table 6.2: Memorandums of Understanding (MOUs) –individual**

District	Package	S/N	Name of the Road	Road ID	Chainage	Side of the road	Ownership of land (Government /	Reasons for additional land requirement	Name & Address of the land owner
Gampaha	GA 04	01.	Palliya para road from Waradala Minuwangoda road statue up to Welihida	WGA 202	Ch.1+449-1+507	LHS	Private land	Road improvement	Anton, Anton vila, Palliya para, road from Waradala.
Kalutara	KL 06	02.	Bothalawa Road	WKL 113 (A)	Ch. 2+720 -2+840	RHS	Private	Space for shoulder and drain	M.A. Sunil, Katukele, Welmigoda.
	KL 06	03.	Bothalawa Road	WKL 113 (A)	Ch. 2+290 -3+010	RHS	Private	Space for shoulder and drain	Nadeeshani Disanayake, Katukele, Pelawaththa.
	KL 06	04.	Bothalawa Road	WKL 113 (A)	Ch. 3+360-3+400	LHS	Private	Space for shoulder and drain	P.H. Gunasena, Wimalasara Mw, Megahathenna.
	KL 06	05.	Bothalawa Road	WKL 113 (A)	Ch. 3+410-3+467	LHS	Private	Space for shoulder and drain	M.S. Priyantha, Katukele, Welamigoda.
	KL 06	06.	Bothalawa Road	WKL 113	Ch. 0+920-0+950	LHS	Private	Space for shoulder and drain	Indika Chandani, Bothalawa, Meegahathenna.
	KL 06	07.	Bothalawa Road	WKL 113	Ch. 0+920 -0+950	RHS	Private	Space for shoulder and drain	K. Wilson, Bothalawa, Meegahathenna.
	KL 06	08.	Bothalawa Road	WKL 113	Ch. 0+980 -1+035	LHS	Private	Space for shoulder and drain	K. Wilson, Bothalawa, Meegahathenna.
	KL 06	09.	Bothalawa Road	WKL 113	Ch. 1+490-1+455	LHS	Private	Space for shoulder and drain	Misilin Zoyza Bothalawa, Meegahathenna.
	KL 06	10.	Bothalawa Road	WKL 113	Ch. 1+490-1+505	LHS	Private	Space for shoulder and drain	H.H. Piyasena, Bothalawa, Meegahathenna.
	KL 06	11.	Bothalawa Road	WKL 113	Ch. 1+505-1+527	LHS	Private	Space for shoulder and drain	K.A. Malani, Bothalawa, Meegahathenna.
	KL 06	12.	Bothalawa Road	WKL 113	Ch. 1+527-1+550	LHS	Private	Space for shoulder and drain	J.A. Nanayakkara, Bothalawa, Meegahathenna.
	KL 06	13.	Bothalawa Road	WKL 113	Ch. 1+458-1+530	RHS	Private	Space for shoulder and drain	Montegu Nallaperuma, Bothalawa, Meegahathenna.



District	Package	S/N	Name of the Road	Road ID	Chainage	Side of the road	Ownership of land (Government /	Reasons for additional land requirement	Name & Address of the land owner
Kalutara	KL 06	14.	Gulanawaththa Nawala Mandagala Road	115	Ch. 1+530 - 1+540	RHS	Private	Space for shoulder and drain	D.P. Rathnapala, Bothalawa, Meegahathenna.
	KL 06	15.	Gulanawaththa Nawala Mandagala Road	115	Ch. 3+260 -3+308	LHS	Private	Space for shoulder and drain	Somadasa Madanasingha, Nerihena Pahalahewessa
	KL 06	16.	Gulanawaththa Nawala Mandagala Road	115	Ch. 1+560 - 1+610	LHS	Private	Space for shoulder and drain	Somadasa Kolambage, Pelawaththa, Nawala Road, Gulanawaththa
	KL 06	17.	Gulanawaththa Nawala Mandagala Road	115	Ch. 2+360 -2+450	LHS	Private	Space for shoulder and drain	H.G. Mahindasoma, Gulanawaththa, Nawala, Pelawaththa

**Table 6.3: Memorandums of Understanding (MOUs) – Common**

District	Package	S/N	Name of the Road	Road ID	Chainage	Side of the road	Ownership of land (Government /	Reasons for additional land requirement	Name & Address of the land owner
Gampaha	GA 02	01.	Public road Ambepussa nearby army camp	WG A 118	Ch.0+160 - 0+590	LHS	Private	Road improvement	Paddy land, 12 B, Kamarangawa
	GA 02	02.	Public road Ambepussa nearby army camp	WG A 118	Ch. 0+700 - 0+820	LHS / RHS	Private	Road improvement	Paddy land, 12 B, Kamarangawa
	GA 02	03.	Public road Ambepussa nearby army camp	WG A 118	Ch. 1+725 - 1+900	LHS / RHS	Private	Road improvement	Paddy land, 12 B, Kamarangawa

District	Package	S/N	Name of the Road	Road ID	Chainage	Side of the road	Ownership of land (Government / Private)	Reasons for additional land requirement	Name & Address of the land owner
Colombo	CL 02	04.	Panagoda Kompayahena Road	WC O 157	Ch. 0+303 - 0+490	Both Sides	Private	To improve the road	1. W.D Siriyalatha 2. W.C Kamalawathi 3. W.D Somalatha 4. L.P Babynona 5. Gunadasa Gangodavila 6. Lilananda Disanayaka 7. W.D. Premawathi 8. W. Nandawathi

**Table 6.4: Confirmation of land donation –Consent letters**

District	Package	S / N	Name of the Road	Road ID	Chainage	Side of the road	Ownership of land (Government / Private)	Reason for additional land requirement	Name & Address of the land owner
Gampaha	GA 01	01.	Neelammahara to Aramangoda north main road	WG A 404	Ch. 0+331	LHS	Private	Culvert construction	Sriyani Perera, 109/22/1, North Aramangoda.
		02.	Neelammahara to Aramangoda north main road	WG A 404	Ch. 0+732	RHS	Private	Leadaway	K.D. Chiththananda, 109/22 north, Aramangoda, Buthpitiya.
		03.	Neelammahara to Aramangoda north main road	WG A 404	Ch. 0+313	RHS	Private	Leadaway	W.D. Sudath Sisira Kumara, 109/3/3 Aramangoth North, Buthpitiya.
		04	Henegama Gadumana Rajapaksha Mawatha	WG A 402	Ch. 0+887	LHS	Private	Safety improvement	Padmakanthi, No 6, Gadumana, Henegama.
		05.	Ratupaswala Henegama road	WG A 296	Ch. 0+410 - 0+414	LHS	Private	Road Shoulder improvement	M.D.T. Karunatilaka 96, Kutukurunda Henegama.
		06.	Ratupaswala Henegama road	WG A 296	Ch. 0+188	LHS	Private	Road Shoulder improvement	R.P.M.P. Rajapakshe 61/2, Kutukurunda Henegama.

District	Package	S / N	Name of the Road	Road ID	Chainage	Side of the road	Ownership of land (Government / Private)	Reason for additional land requirement	Name & Address of the land owner
	GA 01	07.	Pahala Mapitigama Keragala Mawatha	WG A 363	Ch. 0+235 - 0+262	LHS	Private	Road Shoulder improvement	B.A. Pushpalatha, No 51 A, Udamapitigama, Dompe.
		08.	Buthpitiya Ginigasgama	WG A 291	Ch. 0+030 - 0+190	LHS	Private	Road Shoulder improvement	H.W.K. Jayasundara, Paddy land area
		09.	Amunukumbura Jambugahamulla road	WG A 401	Ch. 1+080	LHS	Private	Leadaway	A.K.C Kaluarachchi 141/1 Amunukumbura, Waturagama.
		10.	Amunukumbura Jambugahamulla road	WG A 401	Ch. 1+075	LHS	Private	Leadaway	A.K.C. Kumaralal 136, Amunukumbura, Waturagama.
		11.	Amunukumbura jambugahamulla road	WG A 401	Ch. 0+300	LHS	Private	Leadaway	H.P. rathnapala 82, Amunukumbura, Waturagama.
		12.	Henegama Gadumana Rajapaksha Mawatha	WG A 402		RHS	Private	Road Shoulder improvement	D.A.A. Dissanayaka 156/6/A Wilibula, Henegama.
		13.	Henegama Gadumana Rajapaksha Mawatha	WG A 402	Ch. 0+887- 0+910	RHS	Private	Road Shoulder improvement	Harshana Rajapakshe, 887 rajapaksha Mawatha, Gadumana.
		14.	Buthpitiya Ginigasgama	WG A 291	Ch.0+05 0 0+120	LHS	Private	Road Shoulder improvement	E.K.W.k. Udayarathne, Paddy land area
		15.	Sudunelum Mawatha	WG A 336	Ch 0+235- 0+265	LHS	Private	Road improvement	H. Ariyaratne Kamburugahawatta, road, Pannila.
		16.	All closed Wetex road	WG A 344	Ch 0+550- 0+543	LHS	Private	Drain construction	G.B. Piyasena, Wetex bandaranayaka Road, Weyangoda.
		17.	Wadurawa Weyangoda road	WG A 136	Ch. 0+000 - 0+021	LHS	Private	Drain construction	R.A.S Lakshara No. 60, Wadurawa, Weyangoda.
		18.	Wadurawa Weyangoda road	WG A 136	Ch. 0+047- 0+057	LHS	Private	Drain construction	A.D. Ariradasa, 62/1, Wadurawa, Weyangoda.
		19.	Wadurawa Weyangoda road	WG A 136	Ch. 0+000- 0+008	LHS	Private	Drain construction	A.D.E. Jayasinhe No 64/2, Wadurawa, Weyangoda.
		20.	Wadurawa Weyangoda road	WG A 136	Ch. 0+027- 0+040	LHS	Private	Drain construction	A.T.S. Lakmal No 62/2, Wadurawa, Weyangoda.

District	Package	S / N	Name of the Road	Road ID	Chainage	Side of the road	Ownership of land (Government / Private)	Reason for additional land requirement	Name & Address of the land owner
	GA 02	21.	Mahalegoda road	WG A35 1	Ch. 0+555 - 0+710	LHS	Government	Road improvement	Paddy land
		22.	Sudunelum Mawatha	WG A 336	Ch. 0+201 - 0+210	LHS	Private	Culvert improvement	H. Ariyaratne Kamburugahawatta road, Pannila.
		23.	Sudunelum Mawatha	WG A 336	Ch. 0+933 - 0+937	LHS	Private	culvert improvement	W.A. Gunatilaka No 351 A, Pannila Rukgannawila.
		24.	Nagoda Gamamedda road	WG A 333	Ch. 2+555- 2+260	LHS	Private	culvert improvement	M.D.L.G. Wijesooriya, No 75, Nagoda, Urapola.
		25.	Udammita Ambalama road	WG A 349	Ch. 1+010- 1+080	LHS	Private	road improvement	W.M.S. Wimalasiri No 140, Negenahira, Talgasmote, Weyangoda.
		26.	Wadurawa Weyangoda road	WG A 136	Ch. 0+448- 0+514	LHS	Private	Drain construction	Wasantha Sampath, No 58/3/A, Maligathenna, Weyangoda.
		27.	Wadurawa Weyangoda road	WG A 136	Ch. 0+515- 0+570	LHS	Private	Doad improvement	A.P.L. Jayasundara Maligatenna, Weyangoda.
		28.	Wadurawa Weyangoda road	WG A 136	Ch. 1+130 - 1+150	RHS	Private	Road improvement	N.P.N Jayasinhe 190/2, Wadurawa, Weyangoda.
	GA 03	29.	Maduruwila Gamamedda road	WG A 258	Ch. 0+703- 0+728	LHS	Private	Road improvement	L.B. Kosala Nilakshi Maduruwita, Gamamedda road,
		30.	Maduruwila Gamamedda road	WG A 258	Ch. 1+210- 1+220	LHS	Private	Road improvement	L. Lalitha Sriyalatha Siyabalapitiya road,
		31.	Siyabalapitiya Lokingamuwa road	WG A 264	Ch. 0+180- 0+192	LHS	Private	Road improvement	M.A.A. Silwa, 82/A, Siyabalapitiya, Makawita.
		32.	Siyabalapitiya Lokingamuwa road	WG A 264	Ch. 0+630 - 0+640	RHS	Private	Road improvement	J.B.L. Dias, 79/A, Siyabalapitiya, Makawita.
		33.	Siyabalapitiya Lokingamuwa road	WG A 264	Ch. 0+942- 0+962	RHS	Private	Road improvement	L. Lalitha Sriyalatha, Siyabalapitiya road
		34.	Siyabalapitiya Lokingamuwa road	WG A 264	Ch. 0+770- 0+800	RHS	Private	Road improvement	H.A.S. Hettiarachchi, No 119/1, Siyabalapitiya, Makawita.

District	Package	S / N	Name of the Road	Road ID	Chainage	Side of the road	Ownership of land (Government / Private)	Reason for additional land requirement	Name & Address of the land owner
		35.	Siyabalapitiya Lokingamuwa road	WG A 264	Ch. 0+960-0+971	RHS	Private	Road improvement	K.A.C. Rasika, Siyabalapitiya, Lokingamuwa.
		36.	Parakrama mawath	WG A 005	Ch. 0+488-0+504	LHS	Private	Road improvement	R.G.S.K. Rajapakshe 85/2/A, Amunugoga, Imulgoda.
		37.	Parakrama mawath	WG A 005	Ch. 0+630-0+680	LHS	Private	Road improvement	D.S.A.K. Mahapatuna, 77/A, Amunugoga, Imulgoda.
		38.	Parakrama mawath	WG A 005	Ch. 0+680-0+708	LHS	Private	Road improvement	77/A/4, Sri Parakummawatha, Amunugoga, Imulgoda.
		39.	A.K.C Amarasinha Mawatha	WG A 007	Ch. 0+187-0+233	LHS	Private	Road improvement	A.D.E. Werasinhe East Koshinna.
		40.	A.K.C Amarasinha Mawatha	WG A 007	Ch. 0+820-0+865	RHS	Private	Road improvement	Y.A.U. Rangana, 56/1, Pahalayagoga Ganemulla
		41.	A.K.C Amarasinha Mawatha	WG A 007	Ch. 0+980 - 1+078	LHS	Private	Road improvement	Y.A.G.S.C. Jayasinhe No. 91, Pahalayagoda, Ganemulla.
		42.	Imulgoda Ihalayagoda Moragoda road	WG A 033	Ch. 2+560-2+585	RHS	Private	Road improvement	K.S.A. Kumara, No 128/2, Ihala Yagoda, Gampaha.
		43.	Ragama Ketakewatta Road	WG A 72	Ch. 0+723-0+725	LHS	Private	Road improvement	D.J.L. Silva, No. 242, Ketagewatta, Ragama.
		44.	Ragama Ketakewatta Road	WG A 72	Ch. 0+723-0+725	RHS	Private	Road improvement	K.A. Jayasinge, 843/2A/1, Ketagewatta, Ragama.
		45.	Ragama Ketakewatta Road	WG A 72	Ch. 0+790-0+805	RHS	Private	Road improvement	W.P. Jayalath 851/15, Ketagewatta Ragama.
Colombo	CL 01	46.	Medhananda Mawatha	WC O 83	Ch. 1+065	LHS	Private	Improve the road safety	P.M.G.D.R Chulangane, No 162/A, Medhananda Mw, Pahala Bomiriya, Kaduwela.
	CL 02	47.	Naduhena Nawalamulla Walipillewa	WC O 263	Ch. 0+2500-0+2534	LHS	Private	For a Drainage system requirement	L. Karunasena, Naduhena, Nawalamulla.

District	Package	S / N	Name of the Road	Road ID	Chainage	Side of the road	Ownership of land (Government / Private)	Reason for additional land requirement	Name & Address of the land owner
	CL 03	48.	Welikanna - Elamalawala Road	222	Ch. 0+101 - 0+135	LHS	Private	Road improvement	G.L.D. Udaya Kumara, 523/6, Elamalawala, Thunmodara.
	CL 03	49.	Welikanna - Elamalawala Road	222	Ch. 0+101 - 0+135	RHS	Private	Road improvement	G. Hasitha Prabath, 520/01, Elamalawala, Thunmodara
	CL 03	50.	Pallewasala - Kelimadala Road	201	Ch. 0+630 - 0+640	LHS	Private	Road improvement	K.H Sugathadasa, 486, Waga north, Thunmodara
	CL 03	51.	Pallewasala - Kelimadala Road	201	Ch. 0+570 - 0+583	LHS	Private	Road improvement	I. Wimalasiri, 442/2, Waga north, Thunmodara.
	CL 03	52.	Pallewasala - Kelimadala Road	201	Ch. 0+589 - 0+610	LHS	Private	Road improvement	K.H. Thilakarathna, 438, Waga north, Thunmodara.
Kalutara	KL 05	53.	Bombuwala Totagewatta Road	WKL 047	Ch. 0+065 - 1+120	LHS	Private (Paddy Field)	Inadequate Space for shoulder & drain	Dulakshi Harischandra, School Lane, Bombuwala.
	KL 05	54.	Bombuwala Totagewatta Road	WKL 047	Ch. 1+065 - 1+120	RHS	Private (Paddy Field)	Inadequate Space for shoulder & drain	Dulakshi Harischandra, School Lane, Bombuwala.
	KL 05	55.	Haltota Manana Road	WKL 255	Ch. 2+775 - 2+785	RHS	Private	Inadequate Space for shoulder & drain	W. Khemawathi, Millagahahena, Millaniya.
	KL 05	56.	Haltota Manana Road	WKL 255	Ch. 2+785 - 2+789	RHS	Private	Inadequate Space for shoulder & drain	W. Siriawathi, Millagahahena, Millaniya.
	KL 05	57.	Haltota Manana Road	WKL 255	Ch. 2+812 - 2+824	RHS	Private	Inadequate Space for shoulder & drain	L. L. Rathnasiri, Millagahahena, Millaniya.
	KL 05	58.	Haltota Manana Road	WKL 255	Ch. 2+842 - 2+860	RHS	Private	Inadequate Space for shoulder & drain	T. Somalatha, Millagahahena, Millaniya.
	KL 05	59.	Pethigamuwakanda Main Road	WKL 268	Ch. 0+056 - 0+080	RHS	Private	Inadequate Space for shoulder & drain	Ajith Wickramaarachchi, Pethigamuwa, Haltota.



District	Package	S / N	Name of the Road	Road ID	Chainage	Side of the road	Ownership of land (Government / Private)	Reason for additional land requirement	Name & Address of the land owner
Kalutara	KL 05	60.	Pethigamuwakanda Main Road	WKL 268	Ch. 0+090-0+115	RHS	Private	Inadequate Space for shoulder & drain	T.D.D. Irangani, Balasooriya Mawatha, Pethigamuwa, Haltota 077 2271753
	KL 05	61.	Pethigamuwakanda Main Road	WKL 268	Ch. 0+240-0+250	RHS	Private	Inadequate Space for shoulder & drain	H.H. Dharmadasa, 203 A, Pethigamuwa, Haltota.
	KL 05	62.	Pethigamuwakanda Main Road	WKL 268	Ch. 0+030-0+040	LHS	Private	Inadequate Space for shoulder & drain	A Leelawathi, Pethigamuwa, Haltota.
	KL05	63.	Pethigamuwakanda Main Road	WKL 268	Ch. 0+135-0+160	RHS	Private	Inadequate Space for shoulder & drain	Krishantha Indunil, 200A/2, Pethigamuwa. Mawatha.
	KL 05	64.	Pethigamuwakanda Main Road	WKL 268	Ch. 0+163-0+210	RHS	Private	Inadequate Space for shoulder & drain	Athar Hettiwaththa, 176, Pethigamuwa, Haltota.
	KL 05	65.	Pethigamuwakanda Main Road	WKL 268	Ch. 0+210-0+240	RHS	Private	Inadequate Space for shoulder & drain	K.A. Chinthaka, Pethigamuwa, Haltota.
	KL 05	66.	Pethigamuwakanda Main Road	WKL 268	Ch. 0+240-0+265	RHS	Private	Inadequate Space for shoulder & drain	K. Piyasena, 151, Pethigamuwa, Haltota.
	KL 05	67.	Pethigamuwakanda Main Road	WKL 268	Ch. 0+660-0+721	LHS	Private	Inadequate Space for shoulder & drain	W. Siriawathi, Millaniya, Pethigamuwa South.
	KL 05	68.	Pethigamuwakanda Main Road	WKL 268	Ch. 0+440-0+500	RHS	Private	Inadequate Space for shoulder & drain	S. Piyadasa, Pethigamuwa, Haltota.
	KL 05	69.	Pethigamuwakanda Main Road	WKL 268	Ch. 0+630-0+660	LHS	Private	Inadequate Space for shoulder & drain	G. Wijesiri Silva, Pethigamuwa, Haltota.
	KL 05	70.	Bombuwela Thotagewatta Road	WKL 047	Ch. 0+383-0+400	RHS	Private	Inadequate Space for shoulder & drain	D.D. Kithsiri, Withanawatta, Bombuwala.
	KL 05	71.	Bombuwela Thotagewatta Road	WKL 047	Ch. 0+400-0+433	RHS	Private	Inadequate Space for shoulder & drain	S. G. Premadasa, Withanawatta, Bombuwala.

District	Package	S / N	Name of the Road	Road ID	Chainage	Side of the road	Ownership of land (Government / Private)	Reason for additional land requirement	Name & Address of the land owner
Kalutara	KL 05	72.	Bombuwela Thotagewatta Road	WKL 047	Ch. 0+517-0+543	RHS	Private	Inadequate Space for shoulder & drain	Athula Chaminda, Gulanakanda, Bombuwala.
	KL 05	73.	Bombuwela Thotagewatta Road	WKL 047	Ch. 0+000-0+185	RHS	Private (Paddy Field)	Inadequate Space for shoulder & drain	Karunaratne Samarasinhe/Vimala Udawatta/S.H.Kanthi/Iresha Madushani.
	KL 05	74.	Bombuwela Thotagewatta Road	WKL 047	Ch. 0+185-0+215	RHS	Private	Inadequate Space for shoulder & drain	Sarath Bandula, Thotagewatta, Bombuwala.
	KL 05	75.	Bombuwela Thotagewatta Road	WKL 047	Ch. 0+215-0+234	RHS	Private	Inadequate Space for shoulder & drain	Arabage Somawathi, Thotagewatta, Bombuwala.
	KL 05	76.	Bombuwela Thotagewatta Road	WKL 047	Ch. 0+310-0+332	LHS	Private	Inadequate Space for shoulder & drain	Ywijesiri, Thotagewatta, Bombuwala.
	KL 05	77.	Bombuwela Thotagewatta Road	WKL 047	Ch. 0+295-0+332	RHS	Private	Inadequate Space for shoulder & drain	Samantha, Palayangoda, Thotagewatta, Bombuwala.
	KL 05	78.	Bombuwela Thotagewatta Road	WKL 047	Ch. 0+920-0+945	LHS	Private	Inadequate Space for shoulder & drain	H.H. Priyarthne, Hettiyamulla, Bombuwala.
	KL 05	79.	Bombuwela Thotagewatta Road	WKL 047	Ch. 1+246-1+272	RHS	Private	Inadequate Space for shoulder & drain	Niluka Priyadharshani, Hettiyamulla, Bombuwala.
	KL 05	80.	Bombuwela Thotagewatta Road	WKL 047	Ch. 1+280-1+310	RHS	Private	Inadequate Space for shoulder & drain	Aruni Lakmali, Hettiyamulla, Bombuwala.
	KL 06	81.	Bothalawa Road	WKL 113 (A)	Ch. 2+240 - 2+262	LHS - RHS	Private	Space for shoulder and drain	Subasingha Harshani, Katukele, Pelawaththa.
	KL 06	82.	Bothalawa Road	WKL 113 (A)	Ch. 2+262 - 2+270	LHS - RHS	Private	Space for shoulder and drain	W.G. Palitha, Katukele, Pelawaththa.
	KL 06	83.	Bothalawa Road	WKL 113 (A)	Ch. 2+340 - 2+370	LHS - RHS	Private	Space for shoulder and drain	W.S. Sarath Kumara, Damani Ela, Pelawaththa.

District	Package	S / N	Name of the Road	Road ID	Chainage	Side of the road	Ownership of land (Government / Private)	Reason for additional land requirement	Name & Address of the land owner
Kalutara	KL 06	84.	Bothalawa Road	WK L113 (A)	Ch. 2+650 - 2+700	LHS - RHS	Private	Space for shoulder and drain	Indika Mihirani Katukele, Welmigoda.
	KL 06	85.	Bothalawa Road	WK L113 (A)	Ch. 3+100 - 3+135	RHS	Private	Space for shoulder and drain	Nimla Sunil, Katukele, Welmigoda.
	KL 06	86.	Bothalawa Road	WK L113 (A)	Ch. 3+220 - 3+250	LHS	Private	Space for shoulder and drain	M.D. Hemawathi, Wimalasara Mw, Welmigoda, Meegahathenna.
	KL 06	87.	Bothalawa Road	WK L 113	Ch. 2+010- 2+027	RHS	Private	Space for shoulder and drain	Kamani Rupika Mallawarachchi, Bothalawa, Meegahathenna.
	KL 06	88.	Bothalawa Road	WK L113	Ch. 2+010- 2+056	LHS	Private	Space for shoulder and drain	Neel Mallawarachchi, Bothalawa, Meegahathenna.
	KL 06	89.	Bothalawa Road	WK L 113	Ch. 2+095- 2+105	LHS	Private	Space for shoulder and drain	Perera, Bothalawa, Meegahathenna
	KL 06	90.	Bothalawa Road	WK L113	Ch.3+105 - 3+120	LHS	Private	Space for shoulder and drain	Ghanendra Jayasingha, Katukele, Welamagoda.
	KL 06	91.	Gulanawaththa Nawala Mandagala Road	WK L115	Ch. 3+100 - 3+420	RHS / LHS	Private	Space for shoulder and drain	G.G. Prema Jayantha, Werihena, Pahala Hewessa.
	KL 06	92.	Gulanawaththa Nawala Mandagala Road	WK L115	Ch. 3+220 - 3+260	RHS	Private	Space for shoulder and drain	M. Dayawathii, Pahala Hewessa, Aliwala
	KL 06	93.	Gulanawaththa Nawala Mandagala Road	WK L115	Ch. 3+480 - 3583	LHS	Private	Space for shoulder and drain	Jayasena Lokuge, Pahala Hewessa, Aliwewa.
	KL 06	94.	Gulanawaththa Nawala Mandagala Road	WK L115	Ch. 3+650 - 3+718	RHS	Private	Space for shoulder and drain	S.M. Chinthaka, Nerihena, Pahala Hewessa.
	KL 06	95.	Gulanawaththa Nawala Mandagala Road	WK L115	Ch. 3+930 - 4+050	RHS	Private	Space for shoulder and drain	Sugathadasa Madanasingha, Pahala Hewessa, Aliwewa.



Picture 30: Land donation - Preliminary work - RD ID WGA 136, Ch. 1 +130, GA 02, Gampaha

## 7. MONITORING

Project Implementation Consultants (PIC) and the PMU closely monitored the Social Safeguards Process through holding review meetings and making site visits periodically with limited number of essential officials. Mostly, monitoring meetings were held using electronic communication tools such as Zoom / Teams meetings.

A part from the PIC and PMU, Safeguard Specialist of SLRM, ADB has also monitored the Social Safeguards process through electronic communication tools continuously.

During the period under review, SLRM, ADB has conducted two virtual meetings to monitor the process and shared very essential Guidance to the staff of the project.



## 8. CONCLUSION

Social Safeguard Semi-annual Monitoring Report has been compiled for the period from January to July 2021 as per the Section 10 of Resettlement Framework (RF) on “Monitoring and Reporting”.

The report consists of the status of compliance with the Social Safeguard requirements of Resettlement Framework (RF), Loan Conditions (social safeguards) and Facility Administration Manual (FAM).

Under the Social Safeguard issues and mitigation measures, it discusses the status of implementation of Gender Action Plan (GAP) as well as the involvement of women in project activities, integrating EWCD friendly design, how iRoad 2, WP applied CSD concept, practical application of Grievance Redress Mechanism (GRM), establishment of Grievance Redress Committees (GRCs) under unforeseen constraints encountered due to COVID – 19 Pandemic situation, addressing public grievances, and land donation process.

In compliance with the loan conditions (social safeguards) and RF; recruitment of individual consultants for activities laid down in the Procurement Plan has been completed. In relation to employment, Contractors were instructed and encouraged to follow the conditions stipulated in the Schedule 5 in the Loan Conditions.

Gender Action Plan (GAP) has been formulated for gender mainstreaming activities to ensure that at least 40% women are consulted in the final design of rural access roads, employing at least 30% local women for road maintenance.

Women involvement is highly encouraged and monitored in the project activities and the female labour contribution extended for the construction work, office work, community consultations, COVID -19 Pandemic mitigation work, GRC activities etc.

The percentage of women involvement in the Project Management Unit (PMU), Project Implementation Unit (PIU), Team leader’s (TL) office, Resident Engineers’ (REs) offices, Construction Engineers’ (CE) offices, Contractor’ offices as well in the sites stood at 8.0% during the reporting period. Female participation in GRCs at GN level is 29% whereas 41% participated at DS level GRC meetings.

The Contractors were instructed to take necessary actions to encourage local women to join their workforce. In response to that the Contractors have introduced attractive salaries & incentives for employees, equal wages to men and women for work of equal value, provided comfortable residential and transport facilities for women in particular. The Contractors were discouraged utilization of child labour and human trafficking as per the guidelines stipulated in the RF and FAM. The status of GAP implementation matrix appears in Annexure 02.

As per Gender Action Plan (GAP) under section VIII Gender and Social Dimensions of Facility Administration Manual (FAM), Elderly- Women- Child- Disabled (EWCD) friendly design has been

introduced upon the requests of the public.

The report has given a significant attention on how the project has attempted to mitigate the COVID -19 Pandemic outbreaks in the project. For more practical information: A sample of implementation of site specific COVID - 19 Action Plan and good practices in Gampaha district appears in Annexure 03.

The report also describes the concept of Context Sensitive Design (CSD) including designs changes due to public requests. Grievance Redress Mechanism (GRM) under CSD established as one of the effective strategies to address social safeguard issues confronting the project. The importance of GRM is that the project could get the fullest cooperation of state authorities as well as other stakeholders in addressing social issues through formation of Grievance Redress Committees (GRCs) at Grama Niladhari Division (GND) level and Divisional Secretary Division (DSD) level.

It was also observed that the functioning of GRCs led to develop confidence in the minds of people on project activities and create a trusted way to voice and resolve the issues of the affected persons.

Up to the second reporting period, 19 DS level GRCs out of 35 and 81 GRCs out of 378 at GN level have been established. The remaining GRCs to be established at the commencement of third reporting period was 16 GRCs at DS level and 297 at GN level.

During the period under review, the project was able to establish 10 GRCs at DSD level out of 16 DSDs and 110 GRCs at GND level out of 297 GNDs in the entire project area in the Western Province. The very reason for the slow progress of establishing GRCs is due to COVID -19 pandemic situation. Second and third COVID -19 pandemic situation has severely affected particularly to hold meetings, public awareness campaigns and to establish GRCs in the Western Province in particular. However, project was able to achieve such a remarkable performance amidst COVID -19 pandemic through adopting very effective alternative strategies with the guidance of Safeguard Specialist of SLRM, ADB. to cope up with the situation, as discussed in detail in the report.

The report also discusses on Complaints received through the channels introduced by the project and the way those were classified and addressed effectively depending on the nature and significance of the issue as per the GRM. During the period under review, a total of 434 complaints have been received in the three districts out of which 232 complaints have been completely settled to the satisfaction of complainants and 202 are being in the process of settling. Solutions have been jointly agreed for those 202 Complaints but they are involved in constructions.

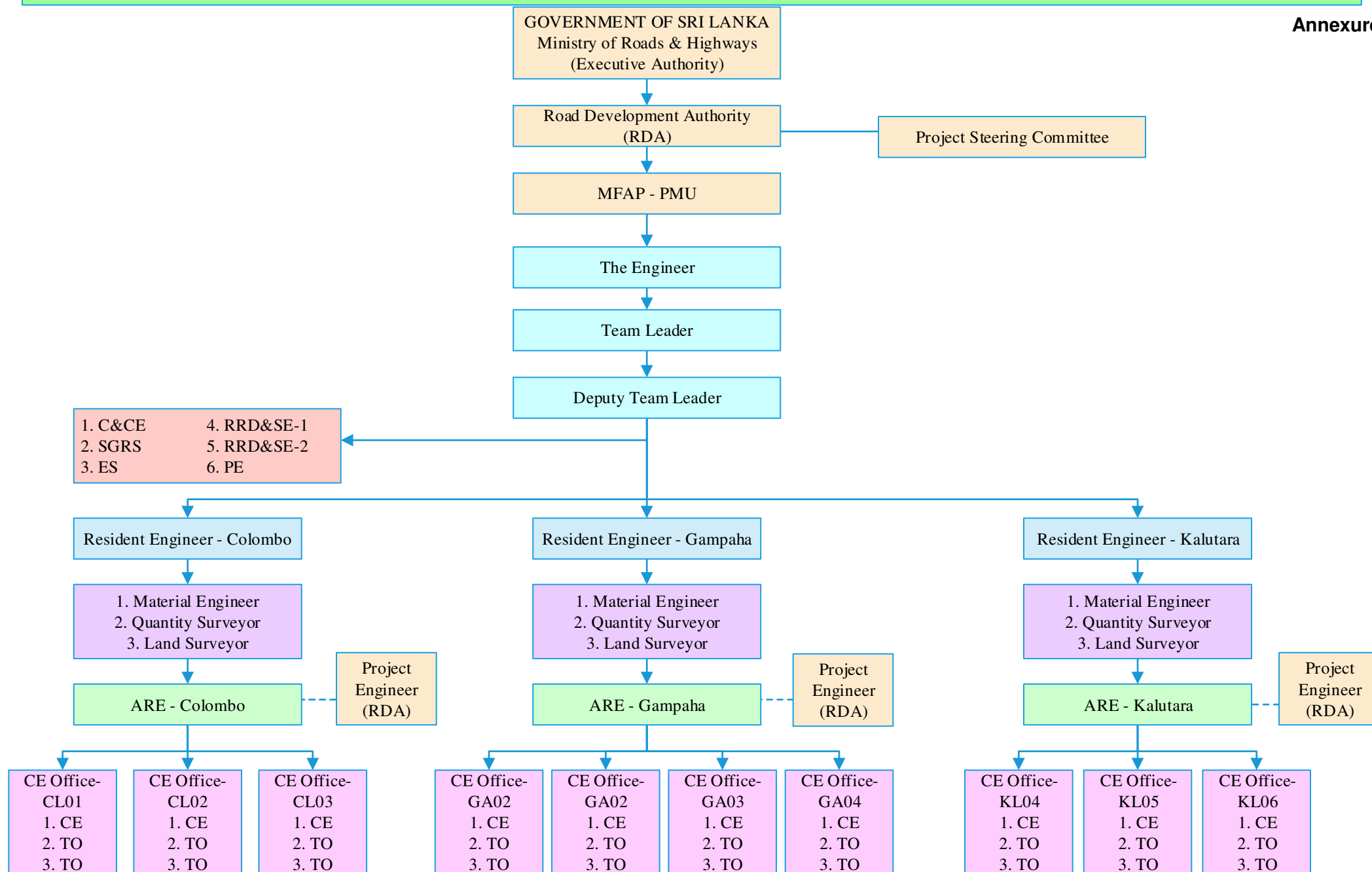
The report also discusses on land donation process and it is reported that a total of 116 land donations received by the project out of which 17 nos. individual MOUs, 04 nos. common MOUs and 95 nos. Consent Letters.

However, due to prevailing COVID-19 pandemic outbreaks, it has been decided to temporarily suspend the conducting of HIV/AIDS Prevention and Health Awareness programmes as well as Road Safety Awareness (RSA) Programmes during the reporting period in the Western Province.

During the period under review, PIC-07 (WP) was able to establish a strong coordination among stakeholders such as Divisional Secretaries, Assistant Directors of Planning, health staff, department of education, school principals, police department, department of agrarian Services, Provincial Road Development Authority (PRD), Local Government Department, Pradeshiya Sabhas, Non-Government Organizations (NGOs) etc.in the Western Province.

# SECOND INTEGRATED ROAD INVESTMENT PROGRAMME IN WESTERN PROVINCE – ORGANIZATION STRUCTURE

Annexure 01



## Key

C&CE – Contract & Claims Engineer  
SGRS – Social, Gender & Resettlement Specialist

ES – Environmental Specialist  
PE – Planning Engineer

RRD&SE – Rural Road Design & Safety Engineer  
ARE – Assistant Resident Engineer

CE – Construction Engineer  
TO – Technical Officer



## Second Integrated Road Investment Program: GAP Implementation Matrix for PIC 07, Western Province

Reporting period: January to June 2021

Target/Activity	Progress in 1H2021 [January to June 2021]	Cumulative progress [progress from the beginning to the period prior to the reporting period]	Status of activity/target [yet to commence, in progress, completed]
Output 1: Road conditions between the selected rural communities and socioeconomic centers improved			
Activity 1.1: For 3,400 km of <b>rural roads</b> , conduct community consultations and integrate findings into the final design, addressing issues of (i) road safety and EWCD features, (ii) construction impact and mitigation measures, and (iii) social and environmental impact and mitigation measures			
1..1.2: At least <b>35%</b> female representation achieved in consultations related to the final designs	<b>Community consultations</b>	<b>Community consultations</b>	In Progress
	Type(s) of community consultation	GRC meetings at Ds and GND level	
	No of community consultations	GRCs at DS level - 10 GRCs at GND level - 110	
	Women	GND level - 700 DS level - 139	
	Men	GND level - 1709 DS level - 198	
	% of women	GND level - 29% DS level - 41%	
	Source: GRC minutes		
	Type(s) of community consultation	Transect walk	
	No of community consultations	1100	
	Women	405	
Men	695		
% of women	36.8%		
Source: GRC minutes			

Target/Activity	Progress in 1H2021 [January to June 2021]	Cumulative progress [progress from the beginning to the period prior to the reporting period]	Status of activity/target [yet to commence, in progress, completed]										
1.1.3: Consultation findings are integrated into the final design	<table><tr><td>Total no. of consultation findings</td><td>89</td></tr><tr><td>No. of consultation findings incorporated into the final design</td><td>89</td></tr><tr><td>% of findings incorporated</td><td>100%</td></tr></table> <p>Design changes including culverts, cross drains, tracktor paths, leaderway etc. ; 89</p>	Total no. of consultation findings	89	No. of consultation findings incorporated into the final design	89	% of findings incorporated	100%	<table><tr><td>1H2020</td><td>Nil</td></tr><tr><td>2H2020</td><td>Design changes including culverts, cross drains, tracktor paths, leaderway etc. ; 29</td></tr></table> <p>2. All the design changes have been incorporated in to the final designs as agreed with the respective residents.</p>	1H2020	Nil	2H2020	Design changes including culverts, cross drains, tracktor paths, leaderway etc. ; 29	In progress
Total no. of consultation findings	89												
No. of consultation findings incorporated into the final design	89												
% of findings incorporated	100%												
1H2020	Nil												
2H2020	Design changes including culverts, cross drains, tracktor paths, leaderway etc. ; 29												
1.1.4: Safety and elderly-women, children and disabled friendly features are integrated into the roads that are improved.	<p>Safer access to a school:</p> <p>WP/H – Malagala Maha Vidyalaya is a school located adjacent to Malagala Yatawathura Rathmalgoda road (ID WCO 068) in CL-02. Based on the request of the Principal project staff paid attention to change the road design with safer exit whereby ensures the safety of school community while using the school access (Ch.0+040 – 0+060 LHS). Direct beneficiaries: Female 141 (54%), Male 118 (46%), Total 259.</p>	<p>Safer access to the school with safety signs:</p> <p>The entrance to the Batuwangala Primary School from road at chainage 0 + 998 – 1 + 012 RHS (ID WKL 260) in KL-05 was through an old “entry steps structure” consisting of 10 steps starting from the edge of the road leading to the school premises.</p> <p>Direct benificeries:School Community – 111, Female 57(51%), Male 54 (49%)</p>	In progress										
1.1.5: Contractors trained as per training manual on gender and transportation (will be developed as per Output 2.2)			Yet to commence										
Activity 1.2: For 340 km of <b>national roads</b> to be improved, integrate safety and EWCD friendly features into the final designs													
1.2.1: Results of the gender analysis and consultation recommendations integrated to make project design, operation, and maintenance gender-responsive	<table><tr><td>Total no. of consultation findings</td><td></td></tr><tr><td>No. of consultation findings incorporated into the final design</td><td></td></tr><tr><td>% of findings incorporated</td><td></td></tr></table>	Total no. of consultation findings		No. of consultation findings incorporated into the final design		% of findings incorporated			No National roads in PIC07, WP				
Total no. of consultation findings													
No. of consultation findings incorporated into the final design													
% of findings incorporated													

Target/Activity	Progress in 1H2021 [January to June 2021]	Cumulative progress [progress from the beginning to the period prior to the reporting period]	Status of activity/target [yet to commence, in progress, completed]
1.2.2: Designs included paved shoulders, pedestrian crossings, and location of signage			Not relevant
<b>Activity 1.3: Encourage contractors to employ local women in road construction</b>			
1.3.1: A communication campaign to inform and attract local women (especially from women-headed households) developed and implemented	Through GRC Establishment Meetings Public awareness campaigns made using multiple tools such as displaying public notices at community attracted places, distribution of brochures, using Public Addressing Systems (PAS). Women were targeted through; Preference given to local women, Immediate recruitment, Payment of equal wages to men and women for work of equal value, Providing comfortable residential and transport facilities, Convenient working hours women in particular, Payment of attractive wages etc.	Through GRC Establishment Meetings Public awareness campaigns made using multiple tools such as displaying public notices at community attracted places, distribution of brochures, using Public Addressing Systems (PAS). Women were targeted through; Preference given to local women, Immediate recruitment, Payment of equal wages to men and women for work of equal value, Providing comfortable residential and transport facilities, Convenient working hours women in particular, Payment of attractive wages etc.	In progress
1.3.2: Contractors meet core labor standards and work health and safety standards	Trained Safety Officer of the Contractor. Provided Covid 19 prevention guideline to prepare individual action plan for each contract. Frequent field visits, Monthly progress review meetings, Monitoring progress reporting Holding frequent Toolbox meetings and monitoring.	Trained Safety Officer of the Contractor. Provided Covid 19 prevention guideline to prepare individual action plan for each contract. Frequent field visits, Monthly progress review meetings, Monitoring progress reporting Holding frequent Toolbox meetings and monitoring.	In progress

Target/Activity	Progress in 1H2021 [January to June 2021]	Cumulative progress [progress from the beginning to the period prior to the reporting period]	Status of activity/target [yet to commence, in progress, completed]																																													
Activity 1.4: Ensure contractors employ local women for road maintenance																																																
1.4.1: At least <b>30%</b> of local women employed in rural road maintenance (with an estimated <b>18,000</b> person-days allocated for women workers)	<p>Table with the composition of men and women in road maintenance</p> <p>In 1H2021:</p> <table><tr><td></td><td>Total</td><td>Male</td><td>Female</td><td>Female %</td></tr><tr><td>1H2021</td><td></td><td></td><td></td><td></td></tr></table> <p>Table on the person days for women</p> <p>In 1H2021:</p> <table><tr><td></td><td>No of women</td><td>Days</td><td>Person days for women</td></tr><tr><td>1H2021</td><td></td><td></td><td></td></tr></table>		Total	Male	Female	Female %	1H2021						No of women	Days	Person days for women	1H2021				<p>Table with the composition of men and women in road maintenance</p> <p>From start to 1H2020:</p> <table><tr><td></td><td>Total</td><td>Male</td><td>Female</td><td>Female %</td></tr><tr><td>1H2020</td><td></td><td></td><td></td><td></td></tr><tr><td>2H2020</td><td></td><td></td><td></td><td></td></tr></table> <p>Table on the person days for women</p> <p>In prior reporting periods:</p> <table><tr><td></td><td>No of women (1)</td><td>Days (2)</td><td>Person days for women (1x2)</td></tr><tr><td>1H2020</td><td></td><td></td><td></td></tr><tr><td>2H2020</td><td></td><td></td><td></td></tr></table>		Total	Male	Female	Female %	1H2020					2H2020						No of women (1)	Days (2)	Person days for women (1x2)	1H2020				2H2020				Yet to commence
	Total	Male	Female	Female %																																												
1H2021																																																
	No of women	Days	Person days for women																																													
1H2021																																																
	Total	Male	Female	Female %																																												
1H2020																																																
2H2020																																																
	No of women (1)	Days (2)	Person days for women (1x2)																																													
1H2020																																																
2H2020																																																
1.4.2: Ensure contractors meet core labor standards and work health and safety standards			Yet to commence																																													
1.4.3: <b>100%</b> women employed for maintenance trained and provided with safety equipment	<p>Table with training for women employees in road maintenance</p> <p>1H2021</p> <table><tr><td>No of women in maintenance</td><td>No of Women trained</td><td>% share of women trained</td><td>% of women with safety equipment</td></tr><tr><td></td><td></td><td></td><td></td></tr></table>	No of women in maintenance	No of Women trained	% share of women trained	% of women with safety equipment					<p>Table with training for women employees in road maintenance</p> <p>Prior periods:</p> <table><tr><td>No of women in maintenance</td><td>No of Women trained</td><td>% share of women trained</td><td>% of women with safety equipment</td></tr><tr><td></td><td></td><td></td><td></td></tr></table>	No of women in maintenance	No of Women trained	% share of women trained	% of women with safety equipment					Yet to commence																													
No of women in maintenance	No of Women trained	% share of women trained	% of women with safety equipment																																													
No of women in maintenance	No of Women trained	% share of women trained	% of women with safety equipment																																													



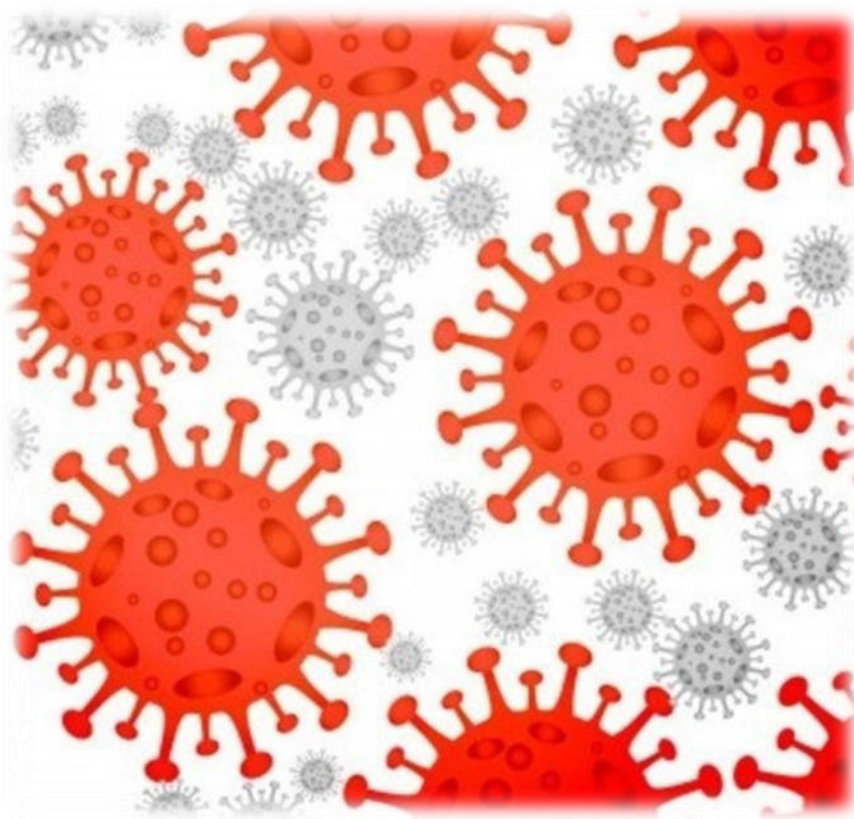
Target/Activity	Progress in 1H2021 [January to June 2021]	Cumulative progress [progress from the beginning to the period prior to the reporting period]	Status of activity/target [yet to commence, in progress, completed]																																																																							
Activity 1.5: Conduct road safety awareness campaigns targeting local communities																																																																										
1.5.1: At least <b>three awareness campaigns launched per district</b> , using diverse communication approaches (workshops, handouts, awareness for schoolchildren, billboards, street drama, etc.) to reach out to children, youth, and adults with <b>50% female participation</b> QT6	1H2021		Yet to commence																																																																							
	<table><tr><th>District</th><th>No of programmes</th><th>Communication method(s) used</th><th>Female</th><th>Male</th><th>% Female</th></tr><tr><td></td><td></td><td></td><td></td><td></td><td></td></tr><tr><td></td><td></td><td></td><td></td><td></td><td></td></tr><tr><td></td><td></td><td></td><td></td><td></td><td></td></tr><tr><td></td><td></td><td></td><td></td><td></td><td></td></tr><tr><td></td><td></td><td></td><td></td><td></td><td></td></tr></table>	District		No of programmes	Communication method(s) used	Female	Male	% Female																															<table><tr><th>Reporting period</th><th>District</th><th>No of programmes</th><th>Communication method(s) used</th><th>Male</th><th>Female</th><th>% female</th></tr><tr><td></td><td></td><td></td><td></td><td></td><td></td><td></td></tr><tr><td></td><td></td><td></td><td></td><td></td><td></td><td></td></tr><tr><td></td><td></td><td></td><td></td><td></td><td></td><td></td></tr><tr><td></td><td></td><td></td><td></td><td></td><td></td><td></td></tr></table>	Reporting period	District	No of programmes	Communication method(s) used	Male	Female	% female																												
	District	No of programmes		Communication method(s) used	Female	Male	% Female																																																																			
Reporting period	District	No of programmes	Communication method(s) used	Male	Female	% female																																																																				
Activity 1.6: Provide awareness training on sexually transmitted diseases, including HIV, and on human trafficking for civil works employees and local communities																																																																										
1.6.1: At least <b>three community awareness sessions per district</b> , with <b>more than 40% female participants</b> , conducted	1H2021: STDs including HIV:	Prior reporting periods: STDs including HIV:	Yet to commence (COVID- 19 Pandemic situation interrupted the social gatherings)																																																																							
	<table><tr><th>District</th><th>No of program mes</th><th>Female</th><th>Male</th><th>% Female</th></tr><tr><td></td><td></td><td></td><td></td><td></td></tr><tr><td></td><td></td><td></td><td></td><td></td></tr><tr><td></td><td></td><td></td><td></td><td></td></tr><tr><td></td><td></td><td></td><td></td><td></td></tr></table>	District		No of program mes	Female	Male	% Female																					<table><tr><th></th><th>District</th><th>No of programs</th><th>No of women</th><th>No of men</th><th>% of women</th></tr><tr><td>1H2020</td><td></td><td></td><td></td><td></td><td></td></tr><tr><td>2H2020</td><td></td><td></td><td></td><td></td><td></td></tr></table>		District	No of programs	No of women	No of men	% of women	1H2020						2H2020																																	
	District	No of program mes		Female	Male	% Female																																																																				
	District	No of programs	No of women	No of men	% of women																																																																					
1H2020																																																																										
2H2020																																																																										
<table><tr><th>District</th><th>No of program mes</th><th>Female</th><th>Male</th><th>% Female</th></tr><tr><td></td><td></td><td></td><td></td><td></td></tr><tr><td></td><td></td><td></td><td></td><td></td></tr><tr><td></td><td></td><td></td><td></td><td></td></tr><tr><td></td><td></td><td></td><td></td><td></td></tr></table>	District	No of program mes	Female	Male	% Female																					<table><tr><th></th><th>District</th><th>No of sessions</th><th>No of women</th><th>No of men</th><th>% of women</th></tr><tr><td>1H2020</td><td></td><td></td><td></td><td></td><td></td></tr><tr><td>2H2020</td><td></td><td></td><td></td><td></td><td></td></tr></table>		District	No of sessions	No of women	No of men	% of women	1H2020						2H2020																																			
District	No of program mes	Female	Male	% Female																																																																						
	District	No of sessions	No of women	No of men	% of women																																																																					
1H2020																																																																										
2H2020																																																																										

Target/Activity	Progress in 1H2021 [January to June 2021]	Cumulative progress [progress from the beginning to the period prior to the reporting period]	Status of activity/target [yet to commence, in progress, completed]																																																																		
1.6.1: Awareness training on <b>an annual basis</b> for civil works employees by <b>all contractors</b> conducted	2021: <table><tr><td>Contractor package</td><td>No of trainings</td><td>Male</td><td>Female</td><td>Female %</td></tr><tr><td></td><td></td><td></td><td></td><td></td></tr><tr><td></td><td></td><td></td><td></td><td></td></tr><tr><td></td><td></td><td></td><td></td><td></td></tr></table>	Contractor package	No of trainings	Male	Female	Female %																<table><tr><td></td><td>Contractor package</td><td>No. of trainings</td><td>Male</td><td>Female</td><td>% female</td></tr><tr><td></td><td></td><td></td><td></td><td></td><td></td></tr><tr><td></td><td></td><td></td><td></td><td></td><td></td></tr><tr><td></td><td></td><td></td><td></td><td></td><td></td></tr><tr><td></td><td></td><td></td><td></td><td></td><td></td></tr></table>		Contractor package	No. of trainings	Male	Female	% female																									Yet to commence																
Contractor package	No of trainings	Male	Female	Female %																																																																	
	Contractor package	No. of trainings	Male	Female	% female																																																																
Output 2: Capacity of road agencies enhanced																																																																					
Activity 2.1: Appoint social and gender focal points at contractor, consultant, and employer levels																																																																					
2.1.2: One gender and social focal staff for each PIC	Male representative – SGRS (Dr. S. Kindelpitiya) PhD 30 years	Male representative – SGRS (Dr. S. Kindelpitiya) PhD 30 years	Completed																																																																		
2.1.3: One gender and social focal staff for each contractor package	<table><tr><td>Contract package</td><td>Gender and social focal appointed (Yes/No)</td><td>Male/Female</td></tr><tr><td>CL01</td><td>Yes</td><td>Male</td></tr><tr><td>CL02</td><td>Yes</td><td>Female</td></tr><tr><td>CL03</td><td>Yes</td><td>Male</td></tr><tr><td>KL04</td><td>Yes</td><td>Male</td></tr><tr><td>KL05</td><td>Yes</td><td>Male</td></tr><tr><td>KL06</td><td>Yes</td><td>Female</td></tr><tr><td>GA01</td><td>Yes</td><td>Male</td></tr><tr><td>GA02</td><td>Yes</td><td>Male</td></tr><tr><td>GA03</td><td>Yes</td><td>Male</td></tr><tr><td>GA04</td><td>Yes</td><td>Male</td></tr></table> <p>One District Social Officer is assigned for each district (Gampaha, Colombo and Kalutara) as district based Social and Gender focal point.</p> <p>Bachelor degree with project experience</p>	Contract package	Gender and social focal appointed (Yes/No)	Male/Female	CL01	Yes	Male	CL02	Yes	Female	CL03	Yes	Male	KL04	Yes	Male	KL05	Yes	Male	KL06	Yes	Female	GA01	Yes	Male	GA02	Yes	Male	GA03	Yes	Male	GA04	Yes	Male	<table><tr><td>Contract package</td><td>Gender and social focal appointed (Yes/No)</td><td>Male/Female</td></tr><tr><td>CL01</td><td>Yes</td><td>Male</td></tr><tr><td>CL02</td><td>Yes</td><td>Female</td></tr><tr><td>CL03</td><td>Yes</td><td>Male</td></tr><tr><td>KL04</td><td>Yes</td><td>Male</td></tr><tr><td>KL05</td><td>Yes</td><td>Male</td></tr><tr><td>KL06</td><td>Yes</td><td>Female</td></tr><tr><td>GA01</td><td>Yes</td><td>Male</td></tr><tr><td>GA02</td><td>Yes</td><td>Male</td></tr><tr><td>GA03</td><td>Yes</td><td>Male</td></tr><tr><td>GA04</td><td>Yes</td><td>Male</td></tr></table> <p>One District Social Officer is assigned for each district (Gampaha, Colombo and Kalutara) as district based Social and Gender focal point.</p> <p>Bachelor degree with project experience</p>	Contract package	Gender and social focal appointed (Yes/No)	Male/Female	CL01	Yes	Male	CL02	Yes	Female	CL03	Yes	Male	KL04	Yes	Male	KL05	Yes	Male	KL06	Yes	Female	GA01	Yes	Male	GA02	Yes	Male	GA03	Yes	Male	GA04	Yes	Male	Completed
Contract package	Gender and social focal appointed (Yes/No)	Male/Female																																																																			
CL01	Yes	Male																																																																			
CL02	Yes	Female																																																																			
CL03	Yes	Male																																																																			
KL04	Yes	Male																																																																			
KL05	Yes	Male																																																																			
KL06	Yes	Female																																																																			
GA01	Yes	Male																																																																			
GA02	Yes	Male																																																																			
GA03	Yes	Male																																																																			
GA04	Yes	Male																																																																			
Contract package	Gender and social focal appointed (Yes/No)	Male/Female																																																																			
CL01	Yes	Male																																																																			
CL02	Yes	Female																																																																			
CL03	Yes	Male																																																																			
KL04	Yes	Male																																																																			
KL05	Yes	Male																																																																			
KL06	Yes	Female																																																																			
GA01	Yes	Male																																																																			
GA02	Yes	Male																																																																			
GA03	Yes	Male																																																																			
GA04	Yes	Male																																																																			

Target/Activity	Progress in 1H2021 [January to June 2021]			Cumulative progress [progress from the beginning to the period prior to the reporting period]	Status of activity/target [yet to commence, in progress, completed]		
2.1.4: Semiannual reports submitted on GAP monitoring include sex-disaggregated data and report progress against targets	1H2021:			Prior reporting periods:	Completed		
	Reporting period	GAP report Submitted	Sex-disaggregated data adequately provided	Reporting period		GAP report Submitted	Sex-disaggregated data adequately provided
	1H2021	yes	yes	1H2020		-	-
				2H2020		-	-
Activity 2.3: Develop and promote an online web application for grievance reporting by local communities using local languages							
2.3.3: Information campaign conducted for raising community awareness on the use of the application					Yet to commence		

**Second Integrated Road Investment Program (iRoad 2), PIC 07,  
Western Province**

**Rehabilitation/ Improvements and Maintenance of 264 km Rural Roads in  
Gampaha District in the Western Province**



**Implementation of Site Specific COVID-19  
Action Plan and Good Practices in Each  
Contract Package - Gampaha District**

As at

**30<sup>th</sup> June 2021**



No	Attribute	Actions Taken to Avoid Spread of COVID-19 in the Work Place	Remarks
1	Hand hygiene	i) Awareness posters were displayed at prominent locations in each office	Figure 1
		ii) Handwashing facilities with soap and water were provided at the entrance of each and every office premises.	Figure 2
		iii) Hand hygiene was ensured providing with alcohol - Based Hand - rub dispensers as enough in each prominent place.	Figure 3
		iv) Surgical gloves were provided for the workers as required.	
2	Respiratory hygiene	i) Awareness posters were displayed at prominent locations in each office	Annexure 1
		ii) medical face mask and paper tissues were regularly provided for each worker.	Figure 4
		iii) A bin has provided to dispose the face masks and gloves after using	Figure 5
3	Physical distance	i) Awareness posters were displayed at prominent locations in each office	Annexure 2
		ii) Office furniture were arranged as enough to ensure the physical distancing	Figure 6
		iii) Alternative methods (announcement and sharing of leaflet) to conduct the GRC meetings as required.	Figure 7 & 8
		iv) Teleconferencing facilities were used to conduct special meetings.	Figure 9
		v) Joint site inspections were conducted with the participation of minimum essential officials.	Figure 10
		vi) Reduced density of workers in each office by calling of duties as required depending on the travelling distance of each worker.	
4	Reduce and manage work-related travels	i) Body temperature scanning is going on at each site/ office frequently.	Figure 11
		ii) Workers returning from areas where COVID - 19 transmission detected were allowed to stay at home as per the health and safety recommendations provided by the Government.	
		iii) Limited the staff who were traveling through the areas where COVID - 19 transmission detected as required.	
		iv) COVID - 19 alerts and recorded numbers of infected persons were detected by using an online app before reach the site.	Figure 12

No	Attribute	Actions Taken to Avoid Spread of COVID-19 in the Work Place	Remarks
5	Regular environmental cleaning and disinfection	i) Regularly cleaned the identified high-touch surfaces such like furniture, door and window handles and wash rooms of all offices and accommodations by using disinfectant solution.	Figure 13 & 14
		ii) Proper PPE provided for all workers who were engaged with the disinfection practices.	
6	Risk communication, training and education	i) Awareness posters were displayed at prominent locations in each office	Annexure 1 & 2
		ii) On site pocket meetings were conducted to remind the workers regarding COVID - 19 prevention practices	Figure 15
		iii) Each Contractor was reminded to following up the public health and safety guidelines	
7	Management of people with suspected COVID - 19 or their contacts	People with suspected COVID - 19 or contacts were under gone to Antigen Rapid Tests and PCR tests randomly	Figure 16
		People with suspected COVID - 19 or immediate 1st contacts were made isolated and self - Quarantined as per the guidelines provided by each relevant MOH.	
8	In addition to the measures for all sites	Staff members and workers were vaccinated against COVID - 19 pandemic as required.	



**Figure 1:** Awareness posters were displayed at GA 02 Contractor's office.



**Figure 2:** Handwashing facilities with soap and water were provided at GA 02 Contractor's office.



**Figure 3:** Ensuring hand hygiene sanitizing a hand rub.



**Figure 4:** Face masks were regularly provided for each worker.





**Figure 5:** A bin has provided to dispose the face mask at GA 03 Contractor's office.



**Figure 6:** Office furniture were arranged as enough to ensure the physical distancing.





**Figure 7:** Alternative methods (public announcement) to conduct the GRC meetings at WGA 213, GA 02 Contact Package.



**Figure 8:** Alternative methods (public awareness leaflet) to conduct the GRC meetings at WGA 293, GA 01 Contact Package.



**Figure 9:** Monthly Progress Review Meeting (GA 04 Contact Package) conducted by using Teleconferencing facilities.



**Figure 10:** Joint site inspections were conducted with the participation of minimum essential officials at WGA 024, GA 03.





**Figure 11:** Body temperature scanning at GA 03 Contractor's office.



**Figure 12:** COVID - 19 alerts and recorded numbers of infected persons were detected by using an online app.



**Figure 13:** Regular disinfection of workers accommodations at GA 03 Package.



**Figure 14:** Proper PPE were provided for the workers engaging with disinfection activities.





**Figure 15:** On site pocket meetings were conducted to remind the workers regarding COVID - 19 prevention. At GA 04.



**Figure 16:** Random PCR test conducted at GA01 Contract Package.





Annexure 1: Respiratory hygiene awareness poster displayed.

# Social Distancing & Staying Safe

## What is it?

Social distancing means keeping a minimum of **1.5m** away from other people



## Why is it important?

Social distancing protocols have been introduced to minimise your exposure to COVID-19 and stop the virus spreading

## What do I need to do?

**Maintain the 1.5m rule and keep your distance...** if you imagine anyone around you with their arm out, you should not be able to touch.



For more information, please speak to your leader.

**By all doing our part at SMEC, we can stop the spread**

**Annexure 2:** Physical distance awareness poster displayed.