



# Social Monitoring Report

---

Project Number: 47273

Loan Numbers: Tranche 1 – 3171

Tranche 2 – 3221 /3222

Tranche 3 – 3325 /3326

Semi Annual Report

July to December 2016

## SRI: Integrated Road Investment Program PIC 01 – Southern Province

Prepared by the Road Development Authority, Ministry of Higher Education and Highways for the Asian Development Bank.

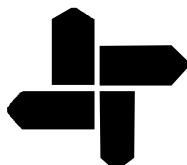
This social monitoring report is a document of the borrower. The views expressed herein do not necessarily represent those of ADB's Board of Directors, Management, or staff, and may be preliminary in nature. Your attention is directed to the “terms of use” section on ADB’s website. In preparing any country program or strategy, financing any project, or by making any designation of or reference to a particular territory or geographic area in this document, the Asian Development Bank does not intend to make any judgments as to the legal or other status of any territory or area.

Asian Development Bank

# **DEMOCRATIC SOCIALIST REPUBLIC OF SRI LANKA**

Ministry of Higher Education & Highways

Road Development Authority



Asian Development Bank Funded  
Integrated Road Investment Program – iRoad  
**PIC 1- Southern Province**

## **SOCIAL SAFEGUARDS MONITORING SEMI- ANNUAL REPORT JULY- DECEMBER 2016**

**Prepared by:**

MGC-ECL. JOINT VENTURE

**Submitted to:**

Ministry of Higher Education & Highways  
Road Development Authority  
iRoad (SP)



**MGC - ECL JOINT VENTURE**



## Table of Contents

<b>1. INTRODUCTION</b>	01
1.1 Background of the Project	05
1.2 Consulting Services Contract	05
1.3 Scope of the PIC Services	05
1.4 Overview of Institutional Framework	06 - 07
1.5 Context and Purpose of this Report	07
<b>2. COMPLIANCE ON SOCIAL SAFEGUARDS REQUIREMENTS</b>	08
2.1 Compliance on Social Safeguards Provisions of the Loan Covenant	09
2.2 Compliance with Requirements in the Resettlement Framework (RF)	10 - 11
2.3 Compliance to the Social Requirements under the Project Facility Administration Manual (FAM)	11 - 13
<b>3. COMPLIANCE WITH RESPECT TO GENDER ACTION PLAN</b>	14
3.1 Gender involvement in HIV/AIDS prevention and Health awareness programmes	14 - 15
3.2 Gender involvement in Road Safety Awareness Programmes	15 - 16
3.3 Gender involvement in Social work programmes	16 - 17
3.4 Elderly- Women- Children- Disabled (EWCD) Friendly Design	17 - 21
<b>4. SOCIAL SAFEGUARDS ISSUES AND MITIGATION MEASURES IMPLEMENTED</b>	24
4.1 Status of Civil Work Implementation in project 1 (PIC 1), Southern Province	24
4.2 Issues and Mitigation Measures Implemented	25
4.2.1 Introduction of concept of Context Sensitive Design (CSD)	25-28
4.2.2 Grievance Redress Mechanism	28
4.2.2.1 Establishment of GRCs at Grama Niladhari Division (GND) Level	28
4.2.2.2 Establishment of GRCs at Divisional Secretariat Division (DSD) level	29-30
4.2.2.3 Grievance Redress Committees	30
4.2.2.4 Receiving Grievances	31-35
4.2.3 Addressing Complaints (Complaints, Grievances, Requests and Suggestions) at three (3) levels;	36
4.2.4 Design Changes made due to Public Requests;	36-38
4.3 HIV/AIDS Prevention and Health awareness programmes –Step 2	39
4.3.1 HIV/AIDS Prevention and Health awareness Programmes Conducted –Step1 and 2	40 - 44
4.4 Road Safety Awareness Programmes for school community	45 - 51
4.4.1 Comments made by the participants	52
4.5 Corporate Social Responsibility Implemented by Contractors and PIC	53 - 55
<b>5. LAND DONATION</b>	56
5.1 Status of land Donation	56 - 65
<b>6. STAKEHOLDER COORDINATION</b>	66 - 68
<b>7. MONITORING</b>	70 - 79
<b>8. CONCLUSION AND RECOMMENDATIONS</b>	80
8.1 Conclusion	80 - 82
8.2 Recommendations	82

Annexure - 1	Overall Organization Chart for PIC	.....	i
Annexure - 2	A sample of Data Base (G1)-Land donation	.....	ii
Annexure – 3	An example (G2) influence of road improvements to the residents	.....	iii
Annexure – 4	A sample - CSR programme conducted in Hambantota – H2	.....	iv

### List of abbreviations

ADB	Asian Development Bank
ARE	Assistant Resident Engineer
BOQ	Bills of Quantities
CRC	Conventional Road Contracts
CSR	Corporate Social Responsibility
DSD	Divisional Secretary Division
EHS	Environmental, Health and Safety
ES	Environmental Specialist
ESDD	Environmental and Social Development Division
EWCD	Elderly Women Children Disabled
FAM	Project Facility Administration Manual
FGD	Focus Group Discussion
FIDIC	International Federation of Consulting Engineers ( <i>Federation Internationale des Ingenieurs Conseils</i> )
FS	Feasibility Study
GAP	Gender Action Plan
GND	Grama Niladari Division
GOSL	Government of Sri Lanka
GRC	Grievance Redress Committee
GRM	Grievance Redress Mechanism
IA	Implementing Agency
ICB	International Competitive Bidding
iRoad	Integrated Road Investment Program
MDB	Multilateral Development Bank
MFF	Multi Tranche Financing Facility
MGC- ECL JV.	MGC- ECL Joint Venture
MOU	Memorandum of Understanding
NCB	National Competitive Bidding
OPRC	Output and Performance based Road Contracts
PE	Project Engineer
PIC	Project Implementing Consultant
PIU	Project Implementing Unit
PPTA	Project Preparatory Technical Assistance
RDA	Road Development Authority
RE	Resident Engineer
RF	Resettlement Framework
RMC	Road Management Contract
ROW	Right of Way
RSA	Road Safety Awareness
SGRS	Social Gender Resettlement Specialist
SP	Southern Province
SPS	Safeguards Policy Statement, 2009 of ADB
STI	Sexually Transmitted Infection
TOR	Terms of Reference

## **List of Tables**

Table 1.1:	CRCs in Galle District .....	2
Table 1.2:	CRCs in Matara District .....	3
Table 1.3:	CRCs in Hambantota District .....	4
Table 2.1:	Compliance with loan conditions (social safeguards).....	9
Table 2.2:	Compliance with RF.....	10
Table 2.3:	Compliance with FAM (social safeguards).....	11
Table 3.1:	Status of gender composition of staff of the Consultants, Contactors' staff and labour crew in PIC-1 Southern province as at 31 <sup>st</sup> December, 2016.....	22
Table 3.2:	Comparison of gender composition in previous and current review periods.....	23
Table 4.1:	Status of civil work implementation as at 31 <sup>st</sup> December 2016.....	24
Table 4.2:	Workshops conducted.....	25
Table 4.3:	Capacity Building/ Training Programs/meetings conducted.....	26
Table 4.4:	Establishment of Grievance Redress Committees.....	31
Table 4.5:	Classified summary of public Grievances, Requests, Suggestions and complaints.....	33
Table 4.6:	Solutions given for Complaints at (1) grassroots, (2) GND and (3) DSD levels .....	36
Table 4.7:	Design changes made to the original design of roads due to public requests.....	37
Table 4.8:	Work plan for conducting HIV/AIDS prevention and Health programs- Step 2.....	39
Table 4.9:	Implementation of HIV/AIDS Prevention and Health awareness Programmes-Step 2 ...	40
Table 4.10:	Work Plan for the implementation of Road Safety Awareness Programmes .....	45
Table 4.11:	Road Safety Awareness programmes conducted .....	48
Table 4.12:	Cooperate Social Responsibility (CSR) Programmes conducted .....	51
Table 5.1:	Memorandums of Understanding (MOUs) –individual;.....	57
Table 5.2:	Memorandums of Understanding (MOUs) –Common .....	59
Table 5.3:	Confirmation of land donation –Consent letters.....	61-78

## **List of Figures**

1.1:	Overall organization chart for PMU, iRoad, RDA.....	5
4.1	GRM process.....	29
5.1	Written Confirmation of land donation.....	54

## **List of Graphs**

Graph 4.1	Status of public Grievances, Requests, Suggestions and Complaints – Galle District	34
Graph 4.2	Status of public Grievances, Requests, Suggestions and Complaints – Matara District	34
Graph 4.3	Status of public Grievances, Requests, Suggestions and Complaints – Hambantota District	35
Graph 4.4	Status of public Grievances, Requests, Suggestions and Complaints – Southern Province	35

## **List of Maps**

Map 1.1:	Locations of 201.3km (66 nos.) roads in Galle District)	2
Map 1.2:	Locations of 217.4km (66 nos.) roads in Matara District	3
Map 1.3:	Locations of 167.0km (50 nos.) roads in Hambantota District	4

## List of Pictures

Picture 01	Discussion with the chairman of GRC at DS level on a Social issue at DS office, Angunukolapelessa, H2 Contract Package, Hambantota	08
Picture 02	Woman as a traffic warden in G2 Contract Package, Galle	14
Picture 03	Gender Participation at HIV/AIDS prevention and Health program , Golden Edge hotel, Elpitiya, Galle on 28 <sup>th</sup> July 2016 (G3 - Contract Package)	15
Picture 04	Female participants are more attentive at RSA program held at Ginimellagaha Maha Vidyalaya, Galle, G2- Contract Package	15
Picture 05	A Teacher (female) and a pupil lighting the traditional oil lamp at RSA program held at Ginimellagaha Maha Vidyalaya, Galle, G2- Contract Package	16
Picture 06	A student (girl) makes the welcome speech at RSA program held at G/ Batuwangala Maha Vidyalaya on 05 July 2016 (G1 Contract Package)	16
Picture 07	Spectacles Donation & Health camp organized by CML-MTD Pvt. Ltd (H2-Contract Package ) at Kadigamuwa Gami Diriya Hall, Hambantota	17
Picture 08	Vulnerable family at Katenvila road, Akuressa, Matara.	17
Picture 09	Vulnerable family at Illuppella- Maningoda- Bopitiya Road, Malimbada, Matara	17
Picture 10	Kavinda lays on a mat and his brother is looking at him	18
Picture 11	Family of Nandawathie	18
Picture 12	Previous access to the house	19
Picture 13	Narrow steps of the access road	19
Picture 14	Widening the road near the house of Mrs. Nandawathie	19
Picture 15	Comfortable access road to the house is being constructed.	19
Picture 16	The new culvert constructed by the project	20
Picture 17	Nihal is at a desperate mood	21
Picture 18	Wife looks after her disabled husband	21
Picture 19	House adjacent to the road.	21
Picture 20	Trainee (University student) makes a presentation	27
Picture 21	CSD and Safeguards Coordination Specialist of TA8473 instructs how to develop a data base for public complaints at PD office.	27
Picture 22	Safeguard Specialist reviews the Maintenance of Data Base in respect of Public Complaints at TL office	27
Picture 23	ADB review meeting held on 21.11.2016 at TL's office.	28
Picture 24	GRC meeting held at DS office, Angunukolapelessa, Hambantota (H2 Contract Package)	29
Picture 25	GRC meeting held to address a social issue with DS at Kadigamuwa GN office, Hambantota, H2- Contract Package	29
Picture 26	Public grievances are addressed at sites by the Chairman of GRC at DS level- Uswewa- Binkama road, Hambantota District (H2 - Contract Package)	30
Picture 27	Dr. Liyanage(MBBS) leads the discussion with the participants at HIV/AIDS prevention and Health program held at Golden Edge hotel, Elpitiya, Galle (G3 - Contract Package)	39
Picture 28	Participants are more attentive at HIV/AIDS prevention and Health program held at Sewa Lanka, Nonagama, Hambantota (H1- Contract Package)	40
Picture 29	Mr. Roshan Wijesuriya, (Environmental officer) welcome the participants at HIV/AIDS prevention and Health program held at Ovindee Hotel, Beliaththa Hambantota (H2 Contract Package)	41
Picture 30	An Expert delivers a lecture at HIV/AIDS prevention and Health program conducted at Ovindee Hotel, Beliaththa, Hambantota (H2 Contract Package)	41
Picture 31	Banner displayed at workshops	42
Picture 32	Docket distributed to participants	42
Picture 33	Booklet 1 distributed among participants	43
Picture 34	Booklet 2 distributed among participants	43
Picture 35	Registration at health camp conducted on 13 07 2016 at Ovindee Hotel, Beliaththa, Hambantota (H2 Contract Package)	44

Picture 37	Health camp conducted on 28. 07. 2016 at Golden edge , Galle(G3 Contract Package)	44
Picture 38		
Picture 39	Health camp conducted on 12 .07. 2016 at Sewalanka Hall, Nonagama ,	44
Picture 40	Hambanthota(H1 Contract Package)	
Picture 41	Social, Gender and Resettlement Specialist lights the traditional oil lamp at the RSA Programme held at G/Ginimallagaha Maha vidyalaya on 29 <sup>th</sup> July 2016– (G2,Contract Package)	45
Picture 42	Resident Engineer, Galle district addresses RSA held at G/Ginimallagaha Maha Vidyalaya on 29 <sup>th</sup> July 2016– (G2, Contract Package)	46
Picture 43	School child (female) makes concluding remarks of the RSA Programme held at G/Ginimallagaha Maha Vidyalaya on 29 <sup>th</sup> July 2016– (G2,Contract Package)	46
Picture 44	The principal of G/Batuwangala Maha Vidyalaya lighting the traditional oil lamp at RSA workshop held on 05 <sup>th</sup> July,2016	47
Picture 45	Rural Roads Design and Road Safety engineer makes his presentation on road safety at G/Batuwangala Maha Vidyalaya, G1, Contract Package, Galle district.	47
Picture 46	Police officer of Neluwa police station makes a presentation on road safety at RSA programme held at G/ Batuwangala Maha Vidyalaya, G1- Contract Package, Galle district	48
Picture 47	Workshop Banner	49
Picture 48	Certificate awarded to the students	49
Picture 49	Front page of the brochure	50
Picture 50	Back page of the brochure	50
Picture 51	“Highway Code” booklet issued by the Motor Traffic Department	51
Picture 52	Dental Clinic & Health Camp organized by CML-MTD Pvt. Ltd (H2- Contract Package) at Kadigamuwa Gami Diriya Hall, Hambantota	53
Picture 53		53
Picture 54	Health Camp organized by CML-MTD Pvt. Ltd (H2- Contract Package) at Sri Asokaramaya, Kadurupokuna, Hambantota	53
Picture 55		53
Picture 56	Before condition at 0+500 RHS	56
Picture 57	Current condition at 0+500RHS	56
Picture 58	Before condition at 0+550LHS	56
Picture 59	Current condition at 0+550 LHS	56
Picture 60	H2 - 0+820 (LHS) Road ID-05	58
Picture 61	H3 - 0+000-0+120 (LHS) Road ID-39	58
Picture 62	H3 - 0+060-0+105 (RHS) Road ID-39	58
Picture 63	H3 - 0+120-0+220 (RHS) Road ID-39	58
Picture 64	H3 - 0+060-0+105 (LHS) Road ID-39	58
Picture 65	01 - 0+320-0+380 (LHS) Road ID-01	59
Picture 66	02 - 1+440-1+505 (RHS) Road ID-01	59
Picture 67	03 - 1+440-1+505 (RHS) Road ID-01	59
Picture 68	04 - 1+718-1+1745 (LHS) Road ID-01	60
Picture 69	05 - 1+938-1+955 (LHS) Road ID-01	60
Picture 70	Representatives of DS office, Traffic Police Officers were among other participants at HIV /AIDS prevention and health awareness programme conducted at Beliatta,Hambantota.(H2 Contract Package)	79
Picture 71	Deputy Resident Project Manager of Mahaveli Authority assists in solving a public issue in H2, Contract Package, Hambantota	80
Picture 72	Doctors of the health department and private sector involvement in CSR programmes in Hambantota district (H2 Contract Package)	80
Picture 73	Combine effort to settle a public issue with different stakeholders at Uswewa-Binkama Road, H2, Hambantota district (Mahaweli Authority, DS office, GN, EDO, Farmer Organization, RDA, Consultant and Contractor).	81
Picture 74	Monitor the progress at provincial level by the Team Leader at his office, Matara.	82

Picture 75	Monitor the progress at Resident Engineers (RE) level- RE office Matara	83
Picture 76	SGRS visits to monitor the social safeguard process in the field (M1, Contract Package)	83
Picture 77	ESDD team visits to Galle (G1- Contract Package)	84
Picture 78	Hydrologist of ESDD, RDA lighting the traditional oil lamp at Mission meeting held at TL office.	84
Picture 79	CSD and Safeguards Coordination Specialist of TA8473 visits Galle (G2, Contract Package)	85
Picture 80	CSD and Safeguards Coordination Specialist of TA8473 visits Matara (M3, Contract Package)	85
Picture 81	CSD & Safeguards Coordination Specialist of TA8473 discusses with beneficiaries – (M2, Contract Package)	86
Picture 82	CSD & Safeguards Coordination Specialist of TA8473 visits Galle (G2, Contract Package)	86
Picture 83	CSD & Safeguards Coordination Specialist of TA8473 discusses the progress at ARE's office Hambantota	87
Picture 84	PD makes welcome speech at the Mission meeting held at the TL's office.	88
Picture 85	Mission on field visit in Galle (G2 Contract Package)	88
Picture 86	Mission on field visit in Galle (G2 Contract Package)	88



## **1. INTRODUCTION**

### **1.1 Background of the Project**

Absence of all-weather roads connectivity is a major concern in Sri Lanka's rural areas, making rural communities less accessible to socioeconomic centers. Poor road infrastructure seriously affects economic growth in rural areas, agricultural productivity, employment, and has a strong link to poverty. The Government is addressing this concern through implementation of a country wide rural road investment program – aimed at providing all-weather road connectivity to eligible habitations in Sri Lanka's rural areas. ADB's interim country partnership strategy, 2015-2016 for Sri Lanka is closely aligned with the priorities of the Government, and reconfirms continuing ADB assistance for the development of the transport sector, particularly rural roads, which are critical for rural development as it provides access to markets, health, education, and administrative services.

The program includes Conventional Road Contracts (CRC), covering rural access road including post construction performance based maintenance, in 3 separate geographical areas and one Road Management Contract (RMC), based on Output and Performance based Road Contracts (OPRC) concept, covering national roads in the Southern, Sabaragamuwa, Western, Central, North-Western and North-Central Provinces.

The ADB's Multi- tranche Financing Facility (MFF) for the Integrated Road Investment Program (i-Road), provides loans to Sri Lanka in an aggregate amount of up to \$ 800 million equivalent. The GOSL will provide counterpart financing of \$106 million for feasibility study and engineering, tax and duties, and part of the contingency. The MFF will comprise a series of loans, to improve the access routes between rural areas and socioeconomic centers, in tranches. The investment program comprises five projects to be implemented between 2014 and 2024. Project 1 is in Southern Province with an estimated cost of \$235 million. Tranche 1 will finance the first slice of Project 1 in Southern Province amounting to \$118 million, with ADB financing \$100 million and GOSL providing the balance \$18 million in counterpart funds.

Project 1 Slice 1 in Southern Province will improve and maintain 560 km of rural access roads and 20 km of national roads under CRCs. The rural access roads, including 510 km of local roads and 50 km of provincial will be on access routes between the rural hubs and the trunk road network. The rural access roads will be improved to all-weather standards, and be maintained for three years. The national roads will connect the rural access roads to adjacent socioeconomic centers. Under a separate Slice of Project 1 about 110 km of national road corridor will be improved and maintained under RMCs based on OPRC for seven years.

Part of the funds from the MFF will be used for providing consulting services for project implementation including construction supervision, supervision of post construction maintenance work, contract management, and other implementation activities.

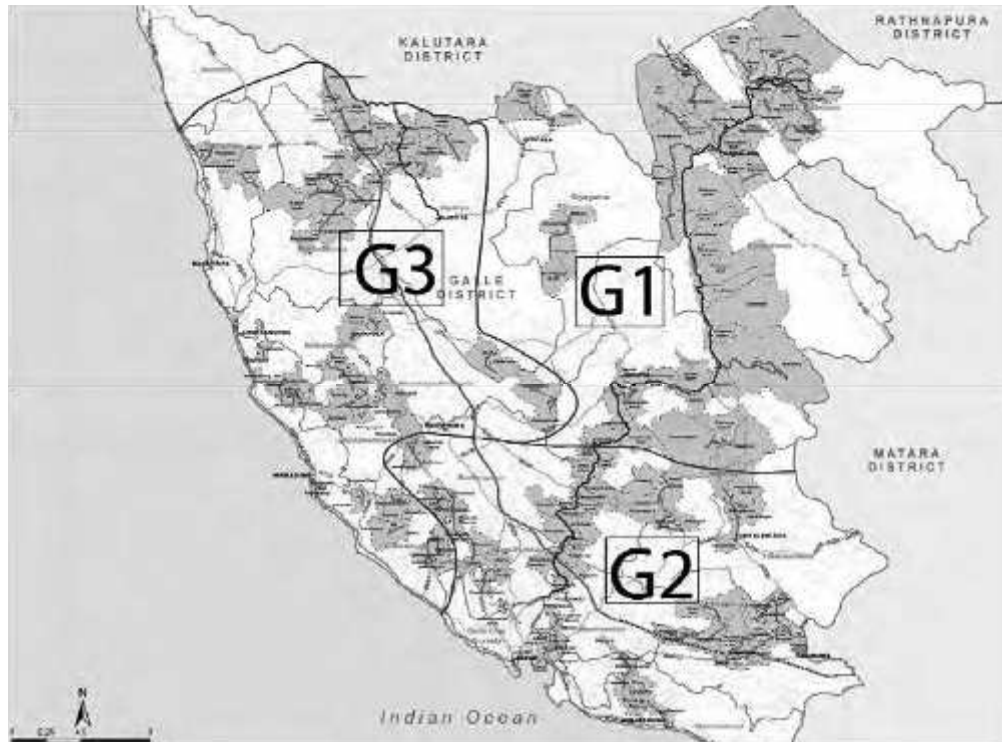
The Executing Agency of the Integrated Road Investment Program (iRoad) is Ministry of Higher Education and Highways and the Implementing Agency is the Road Development Authority.

The three (3) CRCs in Galle District are listed in Table 1.1.

Table 1.1 :CRCs in Galle District

No.	Contractor	Accepted Contract Amount (LKR)	Commencement Date	RDA (km)/ (nos.)	PRDA (km)/ (nos.)	PRDA & PS (km)/ (nos.)	PS (km)/ (nos.)	Total (km) / (nos.)
G1	K. D. Ebert & Sons Holdings(Pvt) Ltd	1,458,055,706.14	18.05.2015	-	2.8/1	-	61.8/14	64.6/15
G2	K. D. A. Weerasinghe & Co(Pvt) Ltd	1,483,136,252.40	18.05.2015	-	15.6/3	3.0/1	47.5/18	66.1/22
G3	K. D. A. Weerasinghe & Co(Pvt) Ltd	1,733,440,933.20	18.05.2015	9.4/1	2.2/1	15.5/3	43.5/24	70.6/29
<b>Sub Total Galle District</b>		<b>4,674,632,891.74</b>	<b>-</b>	<b>9.4/1</b>	<b>20.6/5</b>	<b>18.5/4</b>	<b>152.8/56</b>	<b>201.3/66</b>

The locations of the 201.3km (66 nos.) roads in Galle District are shown in Map1.1 below .



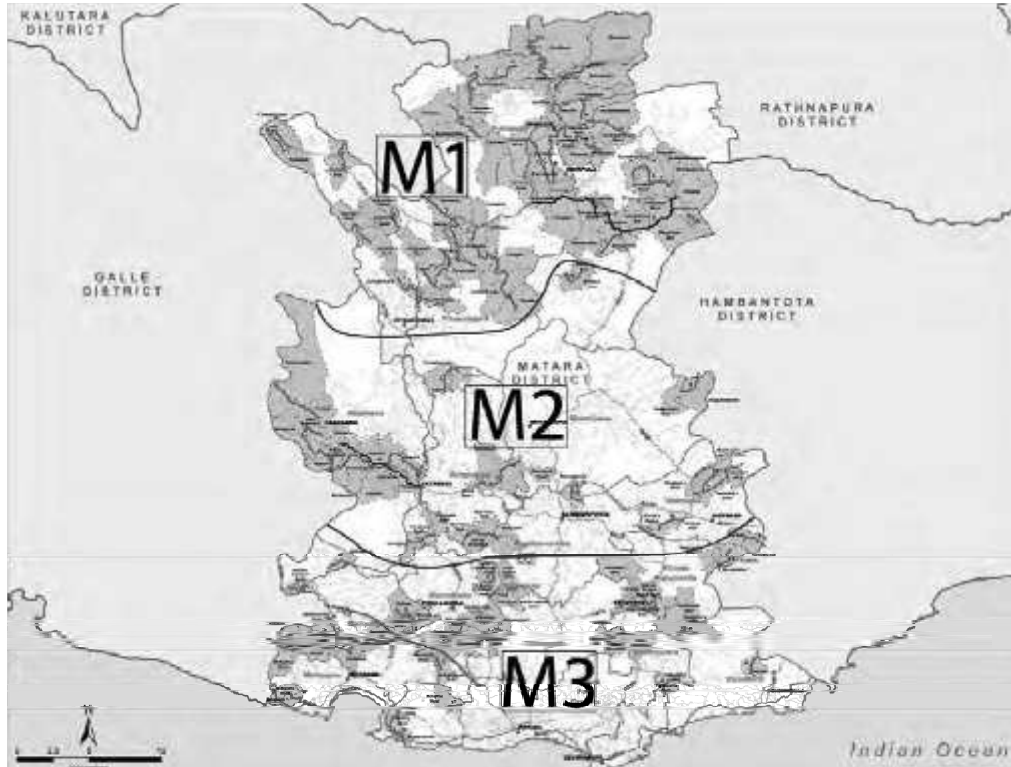
Map1.1: Locations of 201.3km (66 nos.) roads in Galle District)

The three (3) CRCs in Matara District are listed in Table 1.2.

Table 1.2 :CRCs in Matara District

No.	Contractor	Accepted Contract Amount (LKR)	Commencement Date	RDA (km)/ (nos.)	PRDA (km)/ (nos.)	PRDA & PS (km)/ (nos.)	PS (km)/ (nos.)	Total (km) / (nos.)
M1	CML-MTD Construction Ltd	2,315,346,953.44	18.05.2015	6.3/1	30.1/5	-	61.6/16	98.0/22
M2	K. D. Ebert & Sons Holdings (Pvt) Ltd	1,803,301,712.60	18.05.2015	7.2/1	8.8/2	-	48.9/16	64.9/19
M3	K. D. Ebert & Sons Holdings (Pvt) Ltd	1,207,599,780.58	18.05.2015	-	4.8/2	-	49.7/23	54.5/25
Sub Total Matara District		5,326,248,446.62	-	13.5/2	43.7/9	-	160.2/55	217.4/66

The locations of 217.4km (66 nos.) roads in Matara District are shown in Map1.2 below .



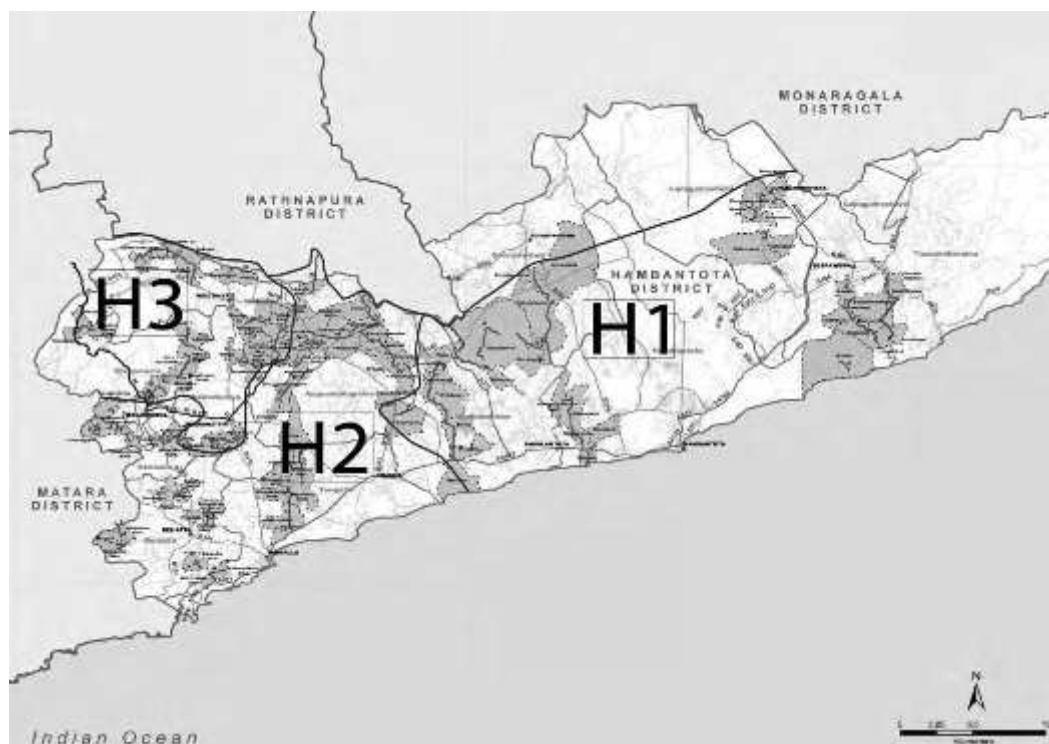
Map1.2: Locations of 217.4km (66 nos.) roads in Matara District

The three (3) CRCs in Hambantota District are listed in Table 1.3 .

Table 1.3 :CRCs in Hambantota District

No.	Contractor	Accepted Contract Amount (LKR)	Commencement Date	RDA (km)/ (nos.)	PRDA (km)/ (nos.)	PRDA & PS (km)/ (nos.)	PS (km)/ (nos.)	Total (km) / (nos.)
H1	K. D. A. Weerasinghe & Co (Pvt) Ltd	1,583,594,552.40	18.05.2015	-	15.3/2	-	53.9/17	69.2/19
H2	CML-MTD Construction Ltd	1,803,301,712.60	18.05.2015	-	15.1/1	-	41.1/16	56.2/17
H3	RR Construction (Pvt) Ltd	1,207,599,780.58	18.05.2015	-	8.8/1	-	32.8/13	41.6/14
Sub Total Hambantota District		4,594,496,045.58	-	-	39.2/4	-	127.8/46	167.0/50

The locations of 167.0km (50 nos.) roads in Hambantota District are shown in Map1.3 below .



Map1 3: Locations of 167.0km (50 nos.) roads in Hambantota District

## 1.2 Consulting Services Contract

Following a two stage tender process of Expressions of Interest (EOI) and Request for Proposals (RFP) complying to the guidelines of the GOSL and ADB, a technical and financial proposal for the provision of Project Implementation Consultancy Services, including construction supervision, contract management and other implementation activities in Southern Province (PIC01) was submitted to the RDA in January 2015 by MGC-ECL JV. The PIC01 services contract was awarded to MGC-ECL JV on 5<sup>th</sup> June 2015 and the 'Notice to Proceed' was issued on same day, with a 30-day commencement period.

## 1.3 Scope of the PIC Services

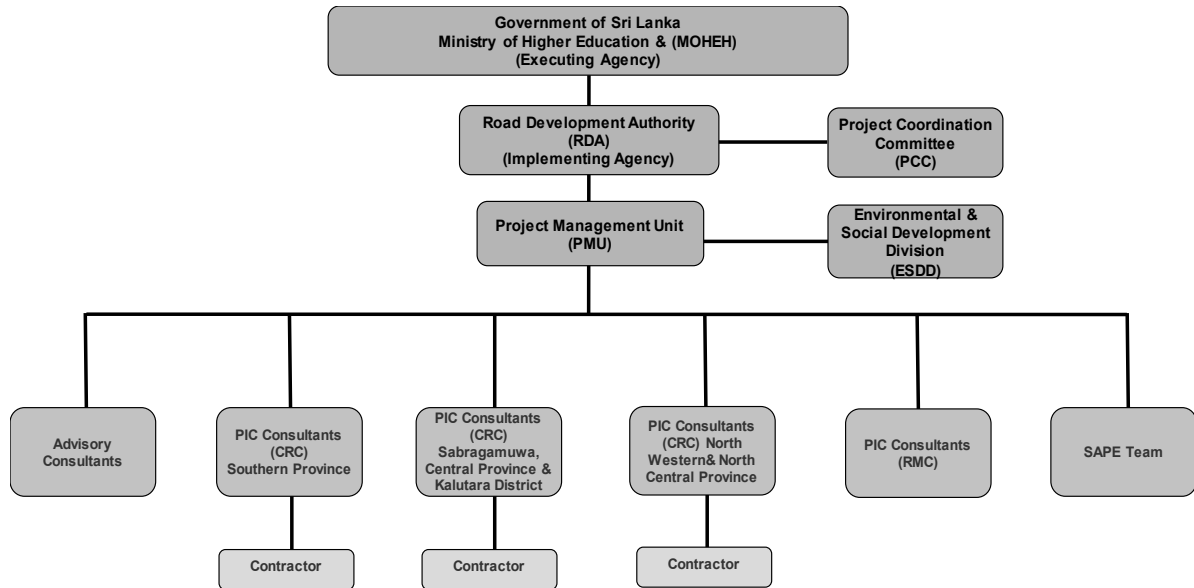
The main task of PIC 1 (CRC) is to assist RDA in supervising and/or implementing the civil works in the CRC component of the iRoad investment program:

The scope of the PIC services and resulting tasks in the TOR fall under the following six broad components:

- a. Contract Administration based on the FIDIC Conditions of Contract MDB Harmonised Edition (June 2010)
- b. Review and approve contractors detailed designs and the cost for each civil workcontract
- c. Safeguard Compliance Monitoring
- d. Project Performance and Monitoring Survey
- e. Prepare and Implement local and overseas capacity development program for IA Staff
- f. Reporting Requirements

## 1.4 Overview of Institutional Framework

The Executing Agency (EA) of the iRoad Investment Program is Ministry of Higher Education and Highways (MOHEH), and the Implementing Agency (IA) is the Road Development Authority (RDA). Three Project Implementation Consultants (PIC) are to be engaged for the CRC component and one PIC for the RMC component. The overall project organization chart is shown below;



**PIC(CRC)** - Project Implementation Consultants for Conventional Road Contracts  
**PIC(RMC)** - Project Implementation Consultants for Road Management Contracts  
**SAPE** - Survey and Preliminary Engineering

**Figure 1. 1 Overall Organization Chart for PMU iRoad, RD**

MGC-ECL JV being the PIC 01 services provider has selected a well-qualified and experienced team of professionals to assist the RDA in the successful delivery of iRoad Southern Province.

The consultancy services comprise as follows;

- Team Leader: 30 Staff-Month input of an international Team Leader,
- FIDIC Contracts & Claims Specialist: Six month input of an international on an as required basis,
- 3 x Resident Engineers: 81 national Staff-Month inputs during construction period,
- 2 x Rural Road Design & Safety Engineers: 56 national Staff-Month inputs during construction period
- Structural Engineer: Six national Staff-Month inputs during construction period
- 3 x Materials Engineers: 72 national Staff-Month inputs during construction period
- 3 x Quantity Surveyors: 81 national Staff-Month inputs during construction period
- Environmental Specialist: 30 national Staff-Month inputs during construction period,
- Social/Gender/Resettlement Specialist: 30 national Staff-Month inputs during construction period,
- 3 x Land Surveyors: 72 national Staff-Month inputs during construction period,
- Contracts & Claims Engineer: 30 national Staff-Month inputs during construction period,
- 3 x Assistant Resident Engineers: 72 national Staff-Month inputs during construction period,
- Resident Engineer: 36 Staff-Month during the maintenance period
- Quantity Surveyor: 36 Staff-Month during the maintenance period
- 10 x Engineers: 240 national Staff-Month inputs of non-key experts
- 18 x Technical Officers: 432 national Staff-Month inputs of non-key experts

Further support staff to the Engineer is provided through the respective CRC Packages, being Administration Manager, Secretary, 2xLab Technician and 2xSurvey Assistant for each CRC Package.

The overall organization chart for the PIC staff including the linkages with RDA PMU counterpart staff is shown in **Annexure 01** - Overall Organization Chart for PIC.

## 1.5 Context and purpose of this report

Resettlement Framework (RF) which has been prepared during the Project Preparatory Technical Assistance (PPTA) sets out guidelines and procedures that need to be complied under social safeguards of the project. As per section 10 of RF on “Monitoring and Reporting” it is required to prepare semi-annual monitoring report on the progress of social safeguards compliance of the project.

This report is prepared to serve as the semi- annual monitoring report on social safeguards and the reporting period is from July to December 2016 for PIC- 1(Southern Province).

## **2 COMPLIANCE ON SOCIAL SAFEGUARDS REQUIREMENTS**

As indicated above the Resettlement Framework (RF) which includes guidance in Social Safeguard has been developed during the Feasibility Study (FS) of the project. The RF provides guidance in selection, screening, categorization, impact assessment, project implementation and monitoring of social safeguards according to requirements of the Government of Sri Lanka as well as the ADB Safeguard Policy Statement (SPS, 2009) for the investment program. As per the guidelines given in RF tranches one, two or any succeeding tranches of iRoad program should adopt the following key social safeguards requirements;

- Selections of roads that fulfill the minimum Right of Way (ROW) requirement, there by avoid land acquisition and involuntary resettlement.
- Avoid acquisition of land and involuntary resettlement through alignment shifts, and modifications in cross-sections to the extent required from safety considerations.
- Carry out meaningful consultations with the public from preliminary design stage so as to make public aware of the project and to obtain inputs from the public/ community to be incorporated in to road designs.
- Ensure that due consultations are carried out with individuals or community and obtain their written agreements in case there is a requirement of additional land for road improvements (as identified during detail design and construction stages).
- Ensure that such land is obtained only through a well-documented “Land Donation Process” as stipulated in the Resettlement Framework for the project.
- Ensure that a Grievance Redress Mechanism (GRM) is in place to address any grievance.
- Ensure gender participation in the project from preliminary design stage through construction and maintenance period.



***Picture 01. Discussion with the chairman of GRC at DS level on a Social issue at DS office, Angunukolapelessa, H2 Contract Package, Hambantota***



## 2.1 Compliance on Social Safeguards Provisions of the Loan Covenant

The requirements stipulated in the loan conditions of PIC 1 have been or are being complied with as detailed in the below table.

Table 2.1 Compliance with Loan Conditions (Social Safeguards)

Item/ Section/ Schedule	Description	Status of Compliance
Schedule 4 Consulting Services	The Borrower shall recruit the individual consultants for activities outlined in the Procurement Plan in accordance with procedures acceptable to ADB for recruiting individual consultants.	Recruitment of individual consultant for activities outlined in the procurement plan has been completed
Schedule 5 Safeguards	The Borrower shall ensure, or cause RDA to ensure, that the Project does not have any Indigenous Peoples Safeguards and Involuntary Resettlement Safeguards impacts, both within the meaning of SPS. In the event that the Project does have any such impact, the Borrower shall take all steps required to ensure that the Project complies with the RF and IPPF, applicable laws and regulations of the Borrower and with SPS	All roads selected under PIC 1 have minimum corridor of not less than 2.5 m in rural roads while the ROW for trunk roads has been set at 5.5 m.
	Borrower shall ensure, or cause RDA to ensure, that any voluntary donation of land by beneficiaries for any provincial or rural road is implemented in accordance with the procedures laid out in Appendix 3 of the RF after free, prior and informed consultation and consent of the affected persons, provided that there shall be no voluntary land donation for national roads.	The procedure has been followed in accordance with Appendix 3 of the RF in respect of voluntary land donation. During the period under review, five (05) nos. of individual MOUs signed and also one (01) common MOU signed with the private owners who have donated their land strips for the improvement of roads (Section 5). In addition, two hundred and one (201) nos. of consent letters have also been obtained from the owners for the land strips donated less than one meter width.
Schedule 5 – Labour standards	The Borrower shall ensure that (a) all contractors under the Project comply with all applicable labour laws and regulations, do not allow employment of child labour for project activities, encourage the employment of the poor, particularly women, and provide appropriate facilities for women and children in work sites; (b) people directly affected by the Project are given priority to be employed by the Project; (c) contractors do not differentiate wages between men and women for work of equal value; and (d) specific clauses ensuring these shall be included in the contracts. 10. The Borrower shall ensure that (a) the GAP is implemented in accordance with its terms; (b) the bidding documents and contracts include relevant provisions for contractors to comply with the measures set forth in the GAP; (c) adequate resources are allocated for implementation of the GAP; and (d) progress on implementation of the GAP, including progress toward achieving key gender outcome and output targets, are regularly monitored and reported to ADB.	The Contractors are advised to recruit more females for their work force. All the Contractors have paid equal wages to men and women for work of equal value.

## 2.2 Compliance with Requirements in the Resettlement Framework (RF)

Initial selection of rural and truck roads has been carried out based on the information gathered through district secretariats, divisional secretaries and civil societies. These roads have been then inspected to verify the availability of land (i.e. Right of Way). Other requirements stipulated in the RF have been or are being complied with as detailed in the below table.

Table 2.2 Compliance with RF

Item/ Section/ Schedule	Description	Status of Compliance
<b>A. Background</b>	<p><b>4. Rural Roads.</b> For the rural roads there will be three Contract Packages per district. The Contractor will be responsible for construction of the road over 2 years and performance based maintenance for another 3 years. For the rural roads the improvements will be undertaken completely within the existing right of way which is between 2.5m to 5.5m. Rehabilitation works will include improving pavements/road surface, construction of side drains and embankments, and improvement of culverts, cause ways and bridges.</p>	<p><b>Complied with in selection of roads in SP.</b></p> <p>No road having an average ROW less than 2.5 m was selected. Further locations where improvements to road structures and safety needs have been highlighted in transect walk records.</p> <p>Road selections that need additional strips of land for safety purposes have been identified. Details are under land donation in the Section 5 in this report.</p>
<b>B. Screening Criteria of Subsequent Projects</b>	<p>44. The PIU will be responsible for clearly documenting the answers to these questions in a table format. In addition, the PIU will submit to ADB the Involuntary Resettlement (IR) Impact Categorization Checklist in Appendix 1 for each subsequent tranche. Based on the screening, the tranche will be assigned to one of the following categories depending on the significance of probable involuntary resettlement impacts:</p> <p>(i) Category A – A proposed tranche is classified as Category A if it is likely to have significant involuntary resettlement impacts. A resettlement plan, including an assessment of social impacts, is required.</p> <p>(ii) Category B – A proposed tranche is classified as category B if it includes involuntary resettlement impacts that are not deemed significant. A resettlement plan, including assessment of social impacts, is required.</p> <p>(iii) Category C – A proposed tranche is classified as Category C if it has no involuntary resettlement impacts. No further action is required.</p>	<p>Complied during Feasibility Study (FS).</p> <p>Screening of all roads has been completed.</p>

Item/ Section/ Schedule	Description	Status of Compliance
<b>C. Land Acquisition Due Diligence Reports</b>	48. If no acquisition and resettlement impacts were identified during screening, the government will be required to prepare a due diligence report providing support and evidence that there is no impact on land and structures. The due diligence report should confirm whether there are outstanding grievances or issues from previous acquisition of land. The information in the report should be supplemented with findings and analysis from the socioeconomic survey comprising of 20% of households in the project affected area.	Complied during Feasibility Study (FS). Involuntary Resettlement Due Diligence and Socioeconomic Assessment report has already been prepared for SP.

### 2.3 Compliance to the Social Requirements under the Project Facility Administration Manual (FAM)

The requirements stipulated in the updated Facility Administration Manual (FAM) of October 2015 of iRoad program have been or are being fulfilled. Details of each item is summarized in below table.

Table 2.3 - Compliance with FAM (Social Safeguards)

Item/ Section/ Schedule	Description	Status of Compliance
<b>VII Safeguards – B. Involuntary Resettlement</b>	<p>45. <b>Project 1.</b> Project 1 for the improvement of rural access roads and national roads in Southern Province is classified as category “B” in accordance with SPS. The improvement of project roads will be carried out all within the existing alignment with no widening. A land acquisition due diligence was undertaken for all Project 1 roads and did not identify any impact on land, structures, private trees, or community resource properties. Social impact assessment comprising of at least 20% households and focused group discussions were also conducted.</p> <p>However, for the 7-year road management contract of selected national roads, resettlement impact might be encountered at a late stage.</p>	<p>Road widening is envisaged only where social safety is concerned and accommodation of public requests. The detailed designs are prepared by the Contractor and the design engineers of PIC verify the same. Awareness programs are also conducted in this regard. Utility structures which may be affected during construction has been identified during transect walks. These locations are being verified during detailed designs and suitable mitigation measures will be provided in the designs.</p> <p>Sample household survey covering more than 20% household was completed under Survey and Preliminary Engineering works.</p>

Item/ Section/ Schedule	Description	Status of Compliance
	<p><b>46. Pre-construction.</b> The RDA supported by its ESDD and consultants will be responsible for conducting a transect walk for each rural road, during which the community will consult and involved in providing including (i) minimize construction impact, (ii) identify and minimize social and environment impact, and (iii) integrate road safety design into road. The community will also be briefed about the Grievance Redress Mechanism (GRM). The results from the transect walk (report and map) will be submitted to the civil works contractor who will integrate feasible features into the Level 1 final design. The PIC will review final design.</p>	<p>Transect walks have been conducted for all candidate roads during pre-construction stage. Community participation has been a key feature of these transect walks.</p> <p>Outcomes of the transect walks and video footage have been provided to respective contractors to consider feasible features in to the designs.</p>
	<p><b>47. Construction and maintenance.</b> During construction phase, the PIC will be responsible for conducting semi-annual onsite social safeguard monitoring. During maintenance phase, the PIC will be responsible for conducting annual onsite social safeguard monitoring. PIC should pay close attention to ensure that all grievances are addressed in a timely manner. Reporting templates can be found in the Resettlement Framework.</p>	<p>PIC is paying close attention to address all the public grievances and monitoring onsite social safeguard.</p> <p>Complaint register is being maintained by Contractor with copy to PE (RDA) and SGRS (PIC).</p>
	<p><b>48. Preparation of Subsequent Tranches or Unanticipated Impact.</b> A Resettlement Framework has been prepared to guide the preparation of subsequent Projects or unanticipated impact. For preparation of subsequent Projects, the PIC will be responsible for carrying out a due diligence on the ongoing Project(s). RDA will be responsible for initial road selection based on growth potential of Grama Niladari (GN) Divisions as rural hub. The Environment and Social Development Division (ESDD) will then conduct land acquisition due diligence and social impact assessment. 100% of affected households will need to be covered and 20% census of households in the project impact area will be surveyed. If land is required for the rural roads component, the voluntary land donation system will be used. For land donation, specific procedural requirements involving comprehensive consultations with the communities have been prepared in Appendix 3 of the resettlement framework (RF) and the Government will ensure that land donation is undertaken without coercion and documented in a transparent manner.</p> <p>Eminent domain will not occur if negotiation regarding land donation fails. Households will not donate more than 5% of land holding and no physical displacement will take place. The PIC will visit roads with land donation on a monthly basis until land donation process is</p>	<p>Land donation procedure is being followed in accordance with Appendix 3 of RF. More details are given in Section 5 under Land Donation of this report.</p> <p>During the period under review, five (05) nos. of individual MOUs signed and also one (01) common MOU signed with the private owners who have donated their land strips for the improvement of roads. In addition, two hundred and one (201) nos. of consent letters have also been obtained from the owners for the land strips donated less than one-meter width.</p> <p>Details are appeared under Land Donation in the Section 5 in this report.</p> <p>Originals of all the documents pertaining to the written confirmation of land donation are sent to the Project Director (PD) and the details are being entered into the database (<b>Annexure 02</b>) maintained at PD's office</p> <p>No incident of eminent domain was recorded during the reporting period.</p>

Item/ Section/ Schedule	Description	Status of Compliance
	<p>finalized. An independent monitor will be engaged to verify and certify the process has been done as per RF. For national roads requiring land, acquisition will take place in accordance to requirements of the Government and the ADB SPS and land and assets will be compensated at replacement cost for both titleholders and non-titleholders. A Resettlement Plan will need to be prepared for projects with impact. For all roads, civil works cannot commence until the right of way is free of encumbrance, meaning that the affected house hold must be fully compensated and/or assisted prior to dismantling or relocation. The PIU will be supported by the RDA's Environment and Social Development Division (ESDD) and a social safeguard team under the PIC.</p>	
<p><b>VII Safeguards</b> – <b>C. Indigenous Peoples</b></p>	<p>49. For the investment program, an Indigenous Peoples Planning Framework (IPPF) has been prepared to guide the screening and preparation of safeguard planning for future Projects.</p>	<p>There are no roads that were passing close to or through settlements of indigenous people.</p>
	<p>50. For Project 1, no indigenous people were identified during due diligence. In case of any adverse impacts is identified during implementation, the RDA will ensure that the Indigenous peoples plan (IPP) is prepared in accordance with the IPPF and the IPP is reviewed and approved by ADB before commencement of the relevant section of the civil works contract.</p>	

### **3 COMPLIANCE WITH RESPECT TO GENDER ACTION PLAN**

Gender Action Plan (GAP) has been formulated for Project 1. Gender mainstreaming activities include (i) ensuring that at least 40% women are consulted in the final design of rural access roads, (ii) integrating safety and elderly-women-children-disabled friendly features, (iv) employing at least 30% local women for road maintenance and ensure equal wages for equal work, (v) providing training in routine road maintenance to all employed women, and (vi) encourage women's participation in road safety, STI and human trafficking awareness campaigns. To ensure that these and other gender issues are addressed and complied with, the PIC team is included with a full time Social, Gender and Resettlement (SGR) Specialist. ESDD of RDA has the overall responsibility in implementing the GAP, while the PIC support in monitoring the implementation.



*Picture: 02 Woman as a traffic warden in G2 Contract Package, Galle*

A considerable percentage of women has been involved in HIV/AIDS prevention and Health awareness programs, Road Safety Awareness (RSA) programs and Cooperate Social Responsibility (CSR) programs conducted by the project during the period under review.

#### **3.1 Gender involvement in HIV/AIDS prevention and Health awareness programs**

Average percentage of 24% female participants were among total attended participants at three (03) HIV/AIDS prevention and Health awareness programs conducted during the month of July, 2016. It has also been observed that the female participants were very keen on Health Camps held prior to the HIV/AIDS prevention and Health awareness programs.



**Picture 03. Gender Participation at HIV/AIDS prevention and Health program , Golden Edge hotel, Elpitiya, Galle on 28<sup>th</sup> July 2016 (G3 - Contract Package)**

A noteworthy feature is that a female resource person was one of the key presenters at all the HIV/AIDS prevention and Health programs conducted. Her session was very attractive and was able to draw the special attention of the audience not only because of her presentation was in high standard but also it is very seldom to find a female in Sri Lankan society to deliver such a presentation.

### **3.2 Gender involvement in Road Safety Awareness Programs**

Two Road Safety Awareness (RSA) programs were conducted at selected schools during the month of July 2016. Average percentage of female participation at RSA programs conducted was 51%. This achievement is above the expected target mentioned in the GAP which is 30%



**Picture 04. Female participants are more attentive at RSA program held at Ginimellagaha Maha Vidyalaya, Galle, G2- Contract Package**



*Picture 05. A Teacher (female) and a pupil lighting the traditional oil lamp at RSA program held at Ginimellagaha Maha Vidyalaya, Galle, G2- Contract Package*



*Picture 06. A student (girl) makes the welcome speech at RSA program held at G/ Batuwangala Maha Vidyalaya on 05 July 2016 (G1 Contract Package)*

### 3.3 Gender involvement in Cooperate Social Responsibility programs

The average percentage of 50.8 beneficiaries were female from the total participants attended to the Cooperate Social Responsibility (CSR) programs conducted in Galle, Matara and Hambantota during the period under review.





***Picture 07. Spectacles Donation & Health camp organized by CML-MTD Pvt. Ltd (H2-Contract Package ) at Kadigamuwa Gami Diriya Hall, Hambantota***

### **3.4 Elderly- Women- Children- Disabled (EWCD) Friendly Design**

Section VIII of FAM is on gender and social dimensions. Paragraph 63 and 64 of this section describes the gender aspects related to the project. Table 15 under this section presents the Gender Action Plan (GAP) developed for iRoad program. Item 1.1 of this GAP is on addressing road safety and EWCD friendly features in detailed design. Through the design process it was able to build up close relationship with communities in the project area by identifying the need of vulnerable groups and serving them with benefits.



***Picture 08. Vulnerable family at Katenvila road, Akuressa, Matara.***



***Picture 09. Vulnerable family at Illuppella-Maningoda- Bopitiya Road, Malimbada, Matara.***

## Integrating EWCD friendly design

### **Example 01--Akuressa – Ketanwila road (ID 4) in M2 Contract Package, Matara district.**

Accordingly, the project has identified a vulnerable family residing adjacent to Akuressa – Ketanwila road (Road ID.4) which is being improved by the project. Mrs. Nandawathie, 50 years old, widower, headed this family, looks after three male children including a disabled.

The eldest son, Nadeesh Kavinda, aged 21 but looks like an infant, physically and mentally disabled by born. He cannot walk, talk and to attend his personal living requirements lies himself. Somebody has to look after him with special attention. All throughout the day, Kavinda on a mat unless mother takes him out.



***Picture 10. Kavinda lays on a mat and his brother is looking at him***



***Picture 11. Family of Nandawathie***

Since, Mr. D.Y.Jayantha, husband of Nandawathie died due to severe illness in September, 2014, Poor Nandawathie has to be the income receiver of the family and to look after whole family while giving special attention to the disabled child after demise of her husband. However, she herself is not healthy and wealthy enough to bear this situation. She earns Rs. 500.00 a day as a casual labourer in a private sector. Nandawathie attends to all the family difficulties with the idea that this a divine punishment for the sin.

In the meantime, the second son, Nipun Malinda, aged 19, having understanding the family situation, made up his mind to stop schooling and to find out a job. He is supporting the family with the money he earns Rs. 1200.00 a day as a labourer and sacrificing his whole future for the existence of their family.



*Picture 12. Previous access to the house*



*Picture 13. Narrow steps of the access road*

### **Project Benefits obtained by the family;**

- Main constraint to the family was inconvenience to the house access, especially for the disabled child. In order to address this issue, road design has been redesigned with easy access to the house. Proposed road access is being constructed.
- Width of the road is not adequate in front of this house and proposed to widen. Required land strips have been donated by the relevant land owners and the construction work in progress.



*Picture 14. Widening the road near the house of Mrs. Nandawathie*



*Picture 15. Comfortable access road to the house is being constructed.*

- The additional income for the family was by farming their own paddy field and that was restricted due to lack of irrigation facilities to their field. In order to appease with her grievance, the project has constructed a new culvert and the relatives and few villagers agreed to support for re cultivation of their paddy land. Nandawathie really happy with the action taken by the iRoad.



*Picture 16. The new culvert constructed by the project*

**Example 02 - Illuppella- Maningoda- Bopitiya Road (RD ID 03) Contactor Package –M2 - Matara**

It has been identified a vulnerable family residing adjacent to Illuppella- Maningoda- Bopitiya Road (Road ID.3 at chain age. 3+985m). Mr. A.V.G. Nihal Jayasiri, 58 years old, disabled, headed the family who was the only income earner. The family consists of his wife (Mrs. A. Ariyawathi Abenayaka, 58 years old) and a daughter (A.V.G. Madushani, 30 years old).

Mr. Nihal is not a disabled by birth but by an accident. That accident has been occurred after four (4) months pregnancy of his wife, on 21<sup>st</sup> January 1987. He has gone to plucked a king coconut nut from around 2 m height king coconut tree by hanging the king coconut frond. Suddenly he has fallen down with coconut frond. Now he is totally disabled physically and partly mentally. He cannot walk and attend his personal living requirements lies himself. The serious issue is his fecal matter and urine remove from catheter and somebody has to look after him with special attention. The cost of his medicine is around Rs.5000 / - per month.



***Picture 17. Nihal is at a desperate mood***

Since, Nihal couldn't further continue his occupation, his wife, Mrs. Ariyawathi happened to meet all the family expenses including medicine cost for Nihal through uneven income earned by casual labour. Amidst, she has to look after her child and mainly takes the responsibilities of child's education.



***Picture 18. Wife looks after her disabled husband.***

**Grievance forwarded to the project by the family;**

They are under impression that the house will be slipped and damaged due to the road construction and request to take necessary precautionary measures to mitigate the situation.



***Picture 19. House adjacent to the road.***

**Solution suggested;**

Proposed to construct a retaining wall for embankment protection.  
The design has been completed and construction work is under way.

Complying with other requirements of GAP during construction stage include training and participation of women labour. Below section discusses the actions taken by Contractor and PIC on this matter.

Table 3.1 - Status of gender composition of staff of the Consultants, Contactors' staff and labour crew in PIC-1 Southern province as at 31<sup>st</sup> December, 2016

Working Location	Gender			Total Nos.	Female Percentage
		Male	Female		
TL Office	Matara	09	04	13	31 %
RE Offices	Galle (G)	06	04	10	40 %
	Matara (M)	06	05	11	45%
	Hambantota (H)	06	03	09	33%
ARE Offices	G1	11	02	13	15%
	G2	11	02	13	15%
	G3	10	03	13	23%
	M1	13	03	16	19%
	M2	12	02	14	14%
	M3	13	03	16	19%
	H1	10	03	13	23%
	H2	09	03	12	25%
	H3	11	02	13	15%
Contractor's Offices	G1	47	08	55	15%
	G2	20	09	29	31%
	G3	49	09	58	16%
	M1	64	20	84	24%
	M2	65	18	83	22%
	M3	54	15	69	22 %
	H1	29	02	31	6 %
	H2	94	08	102	8%
	H3	54	04	58	7 %
Contractor's Work Sites	G1	120	16	136	12%
	G2	88	15	103	15%
	G3	216	06	222	3%
	M1	261	05	266	2%
	M2	196	18	214	8%
	M3	125	06	131	5 %
	H1	91	26	117	22%
	H2	125	11	136	8%
	H3	266	00	266	0 %
<b>Total</b>		<b>2091</b>	<b>235</b>	<b>2326</b>	<b>10 %</b>

As per the status of gender composition of the Consultants and Contactors' staff & labour crew in PIC-1 Southern Province as at 31<sup>st</sup> December 2016, it was able to enhance the female contribution to the construction and office works by 1% with compared to the previous period under review.

Table 3.2- Comparison of gender composition in previous and current review periods

<b>Working Location</b>	<b>As at</b>	<b>Male</b>	<b>Female</b>	<b>Total Nos.</b>	<b>Female Percentage</b>
Consultant's staff	30.06.2016	106	37	143	26%
	<b>31.12.2016</b>	<b>127</b>	<b>39</b>	<b>166</b>	<b>24%</b>
Contractor's Offices	30.06.2016	415	70	485	14%
	<b>31.12.2016</b>	<b>476</b>	<b>93</b>	<b>569</b>	<b>16%</b>
Contractor's Work Sites	30.06.2016	1273	62	1335	5%
	<b>31.12.2016</b>	<b>1488</b>	<b>103</b>	<b>1591</b>	<b>6%</b>
<b>Total</b>	30.06.2016	1794	169	1963	9%
	<b>31.12.2016</b>	<b>2091</b>	<b>235</b>	<b>2326</b>	<b>10%</b>

## 4 SOCIAL SAFEGUARDS ISSUES AND MITIGATION MEASURES IMPLEMENTED

### 4.1 Status of civil work implementation in PIC 1, Southern Province

Total length of 584.3 km of 183 roads are being rehabilitated/improved under PIC 1 and out of which civil works in progress in 527 km of 152 roads during the period under review. Details of overall progress of civil works are shown in the table below;

Table 4.1 Status of civil work implementation as at 31<sup>st</sup> December 2016

Package No	Contractor	Accepted Contract Amount/ (Rs. Million)	No. of Roads	Road Length/ (Km)	No. of Roads; Civil Works in Progress	Asphalt Completed / (Km)	Physical Progress as at 31 December 2016 Actual (%)	Physical Progress; Cumulative Status up to end of December - 2016 / (%)	
								Target	Actual
G1	K.D.Ebert & Sons Holdings (Pvt.) Ltd	1,458	15	64.6	13	28.8	57.2	85.1	60.0
G2	K.D.A. Weerasinghe & Co (Pvt) Ltd	1,483	22	66.1	19	45.1	68.8	76.1	76.3
G3	K.D.A. Weerasinghe & Co (Pvt) Ltd	1,733	29	70.6	20	51.2	77.6	69.0	81.3
M1	CML-MTD Construction Ltd	2,315	22	98.0	22	64.2	81.5	90.2	84.9
M2	K.D.Ebert & Sons Holdings (Pvt.) Ltd	1,803	19	64.9	14	36.5	74.5	92.1	78.0
M3	K.D.Ebert & Sons Holdings (Pvt.) Ltd	1,208	25	54.5	23	37.3	66.5	84.5	71.2
H1	K.D.A. Weerasinghe & Co (Pvt) Ltd	1,584	19	66.9	15	40.5	52.6	68.6	59.1
H2	CML-MTD Construction Ltd	1,210	18	57.1	12	44.8	82.3	85.0	85.0
H3	R.R Construction. (Pvt.) Ltd	1,052	14	41.6	14	34.7	80.6	78.3	86.5
<b>Total</b>		<b>13,847</b>	<b>183</b>	<b>584.3</b>	<b>152/ (527 km)</b>	<b>383.1 (65%)</b>	<b>71.5</b>	<b>81.7</b>	<b>75.9</b>

An example for the influence of road improvements to the residents is given in *Annexure 03*.



## 4.2 Issues and mitigation measures implemented

### 4.2.1 Introduction of concept of Context Sensitive Design (CSD).

As per to the ADB's Safeguards Policy Statement (SPS 2009), national laws and policies, any development for the country should not leave a set of people negatively affected in economic or physical terms. As this project is linked with the rural population it is best to develop a system where participation of community is considered at various stages of the project. Such approach enables to ensure the sustainability of the project facilities provided. In considering the fact that the involvement of all relevant stakeholders is of prime necessity, the project has introduced the concept of Context Sensitive Design (CSD) which provides a basis for shared vision and work to achieve early consensus. CSD recognizes that roadways must be carefully engineered to move traffic efficiently and safely; it asserts that these goals can be achieved without sacrificing the unique qualities of the community they intend to serve.

Two workshops have been conducted during the period under review as shown in the table below.

Table 4.2 Workshops conducted

Date	Nature of workshop	Venue	Objective	Target group	Participants		Total
					Male	Female	
01.09.2016	Goal Oriented Planning (GOP)- Mid Term	"Pearl Cliff" hotel	Overall physical progress Performances achieved during the past year Strengths and Weaknesses Constructive suggestions towards the accomplishment of project targets, overcoming the identified challenges and bottlenecks	ADB TA8473 team ESDD- RDA PD, SPE, PEs, SSO, SSA, ESA (iRoad- RDA) TL,REs, AREs, RRD&SEs, SGRS, ES, PE, CS, EOs, SEs, EAs	71	22	93
<b>Total</b>					<b>71</b>	<b>22</b>	<b>93</b>

Table 4.3 Capacity building/ training programs/meetings conducted

Date	Nature of program	Venue	Objective	Target group	Participants		Total
					Male	Female	
24.10.2016	Training on Maintenance of Data Base for Public Complaints	Team Leader's office	Enhance the knowledge on maintenance of database	<u>Resource persons;</u> ADB TA8473, SGRS <u>Participants;</u> SSO, SSA, SGRS Assistant, ESA(RDA)	02	04	06
25.10.2016	Training programme for University undergraduates	Team Leader's office	To familiarise the project activities	<u>Resource persons;</u> TL, PE, CS, SGRS, ES, REs, AREs, SEs <u>Participants;</u> University undergraduates	08	03	11
21.11.2016	ADB review mission meeting	Team Leader's office	To review the procedures followed and the progress achieved during the last period by the iRoad, PIC 1(SP)	<u>Participants;</u> ADB mission team SPD, ESDD (RDA Head Office) PD, SPE, PEs, SSO, SSA, ESA (RDA-iRoad, SP) Acting TL REs, AREs, RRD&SEs, SGRS, ES, PE, CS, EOs, SEs, EAs	42	17	59
<b>Total</b>					<b>52</b>	<b>24</b>	<b>76</b>



***Picture 20. Trainee (University student) makes a presentation***



***Picture 21. CSD and Safeguards Coordination Specialist of TA8473 instructs how to develop a data base for public complaints at PD office.***



***Picture 22. Safeguard Specialist reviews the Maintenance of Data Base in respect of Public Complaints at TL office***



*Picture 23. ADB review meeting held on 21.11.2016 at TL's office.*

In addition to the above CSD related workshops/m, project has conducted Road Safety Awareness programs and HIV/AIDS prevention and Health programs during the period under review and the details are appeared under the relevant sections elsewhere in this report

#### **4.2.2. Grievance Redress Mechanism**

As per section VI of Resettlement Framework (RF), Grievance Redress Mechanism (GRM) has been established. GRM is an arrangement for receiving, evaluating and facilitating the resolution of affected person's complaints, suggestions, requests and grievances on social and environmental performances of the project. Affected persons need a trusted way to voice and resolve project related concerns and hence the project has established an effective GRM. The main objective of establishment of Grievance Redress Mechanism (GRM) is to support genuine claimants to resolve their problems through mutual understanding and consensus reaching process with relevant parties. This is in addition to the available legal institutions for resolving appeals from public against the disagreeable decisions.

Depending on the nature and significance of the grievances will be addressed at three levels. The first will be at the grass roots level where complaints will be directly received and addressed by the contractor, PIC or PIU representative on site. Grievances which are simple but still cannot be resolved at the grass roots level will be resolved at the Grama Niladhari (GN) level. More complex grievances which cannot be resolved at the GND level will be addressed at the Divisional Secretariat Division (DSD) level. There will be Grievance Redress Committees (GRCs) at the GN and DS levels.

##### **4.2.2.1 Establishment of GRCs at Grama Niladhari Division (GND) Level**

GRCs are being established at all GNDs in the project area with the objective of finding solutions for the grievances that cannot be solved at grass root level.

The composition of membership of GND level GRCs consists of the Grama Niladhari in the Division (Chairman), Project Engineer (Secretary) being the representative of the PIU, Site Engineer (Member) representing the Supervision Consultants, Environment Officer (Member) representing the Contractor, Leader of a Voluntary Organization/ Non-Governmental Organization (Member), Religious Leader of the area (Member) and a woman leader of a women organization functioning in the area. In addition, Grama Niladhari may invite any government officer of the division to participate at meetings as and when required.



*Picture 24. GRC meeting held at DS office, Angunukolapelessa, Hambantota (H2 Contract Package)*

#### **4.2.2.2 Establishment of GRCs at Divisional Secretariat Division (DSD) level**

GRCs have been established at all Divisional Secretary Divisions in the project area with the objective of finding solutions for the grievances that cannot be resolved at GND level.

The composition of membership of DSD level GRCs consists of is the Divisional Secretary of the area (Chairman), Project Engineer (Secretary) being the representative of the PIU, Relevant Grama Niladhari, (Member), Site Engineer (Member) representing the Supervision Consultants, Environment Officer (Member) representing the Contractor, Leader of a Voluntary Organization/ Non-Governmental Organization (Member), Religious Leader of the area (Member) and a women leader of a women organization in the area. In addition, Divisional Secretary may invite any government officer of the division to participate at meetings as when required.

In certain occasions, Divisional Secretary conduct GN level



*Picture 25. GRC meeting held to address a social issue with DS at Kadigamuwa GN office, Hambantota, H2- Contract Package*

Public grievances that are submitted through GND level GRCs are discussed in detail at DSD level GRC presided by the relevant Divisional Secretary and arrive at a decision. If the committee decides to investigate the site before decision is taken, the DS arranges joint field visit with Affected Persons (APs) and GRC members to find better solution.



**Picture 26. Public grievances are addressed at sites by the Chairman of GRC at DS level- Uswewa-Binkama road, Hambantota District (H2 - Contract Package)**

In order to make the GRM process gender responsive the GRC includes a female member to represent the local community women. Further, when grievances or complaints are submitted to the GRC, both women and men complainants are treated equally and necessary measures is being taken to address the grievance in the best possible way.

In addition, a contact person is designated to receive complaints within the PIU to address all the concerns and grievances of the local communities and affected parties. Contact details of this person is appeared in the public notice displayed on the notice board of all GND offices in the project area.

#### **4.2.2.3 Grievance Redress Committees**

As shown in the table 4.4 all 45 GRCs at Divisional Secretary (DS) level and 228 GRCs at Grama Niladhari (GN) level have been established by 31 December, 2016.

The table below shows the details of establishment of GRCs classified under district and Contract Package wise up to 31 December 2016.

Table 4.4 Establishment of Grievance Redress Committees (GRCs)

District	Contract Package	Total No. of DSDs	GRCs Established during the previous reporting period	Establishment of GRCs at DSD level (01.07.2016 – 31.12.2016)		Total No. of GNDs	GRCs Established during the previous reporting period	Establishment of GRCs at GND level (01.07.2016 – 31.12.2016)	
				GRCs established	GRCs to be established			GRCs established	GRCs to be established
Matara	M1	02	02	00	00	48	48	00	00
	M2	06	06	00	00	20	18	02	00
	M3	07	07	00	00	25	25	00	00
<b>Sub total</b>		<b>15</b>	<b>15</b>	<b>00</b>	<b>00</b>	<b>93</b>	<b>91</b>	<b>02</b>	<b>00</b>
Galle	G1	04	04	00	00	24	22	02	00
	G2	06	06	00	00	18	18	00	00
	G3	08	08	00	00	42	36	06	00
<b>Sub total</b>		<b>18</b>	<b>18</b>	<b>00</b>	<b>00</b>	<b>84</b>	<b>76</b>	<b>08</b>	<b>00</b>
Hambantota	H1	05	05	00	00	19	19	00	00
	H2	04	04	00	00	18	18	00	00
	H3	03	03	00	00	14	13	01	00
<b>Sub total</b>		<b>12</b>	<b>12</b>	<b>00</b>	<b>00</b>	<b>51</b>	<b>50</b>	<b>01</b>	<b>00</b>
<b>Total</b>		<b>45</b>	<b>45</b>	<b>00</b>	<b>00</b>	<b>228</b>	<b>217</b>	<b>11</b>	<b>00</b>

#### 4.2.2.4 Receiving Grievances

Public grievances are received from the general public in the form of grievances, requests, suggestions, and complaints by the project during the implementation of project activities.

##### (a) Public Awareness;

In addition to the community awareness meetings held at the commencement of the project, a public notice developed in local language is being displayed at community attracted places including Grama Niladhari (GN) offices and Divisional Secretariats (DS) in the project area. The main purpose of the notice is to create awareness among communities on the project, understand to what extent the community can involve in project activities and how to make complaints, suggestions, grievances and requests to the project. The public notice gives the key information about the project and contact numbers of relevant officers of the project who are to be contacted regarding social and environment issues.

##### (b). Channels of Receiving Public Grievances

A system of channels has been established to receive public suggestions, requests, complaints and grievances by the project. The public is clearly informed that they can choose any of the following channels in submitting their complaints/ grievances/ suggestions or requests to the project.

### **i. Complaint & Suggestion Box**

Availability of Complaint & Suggestion box at the site has been identified as one of the effective methods to get views of communities prior to the finalizing of road designs. Complaint & Suggestion boxes are installed at Contractor's site offices in all Contract Packages and the public are expected to tender their written grievances to the Contractors Offices through Complaint & Suggestion box. Complaints/ Suggestions are being collected from the Complaint & Suggestion box at the end of each day.

### **ii. Office of Grama Niladhari (GN)**

Grama Niladhari (GN) is the village level government representative of the administrative set up of Sri Lanka. Therefore, the project has made arrangements to officially appoint GN as the Chairman of the Grievance Redress Committee (GRC) established under the project at Grama Niladhari Division (GND) level. A public notice is also displayed at each GND offices in the project area and the public can submit their written grievances to the GN office.

### **iii. Office of the Divisional Secretary**

Divisional Secretary (DS) is the divisional level government representative of the administrative set up of Sri Lanka. Therefore, the project has made arrangements to officially appoint DS as the Chairman of the Grievance Redress Committee (GRC) established under the project at Divisional Secretary (DS) level. A public notice is also displayed at each DS offices in the project area and the public can submit their written grievances to the DS office.

### **iv. Field staff**

In addition to the above channels, all the field staff of the project is instructed to accept public grievances and hand them over to the Project Engineer (PE)/ Environment Officer (EO) /Social Safeguard Officer (SSO) on the same day or in failing which the following day for necessary action.

### **(c). Maintenance of records for public complaints**

Maintenance of relevant records is considered as a prime requirement. All the received grievances are being registered at the Project Manager's office of the Contractors. The grievances received by the project are being prompt attended to.

All the grievances received are classified according to the nature of grievance. Classified grievances and the status of action taken are summarized in the table below;



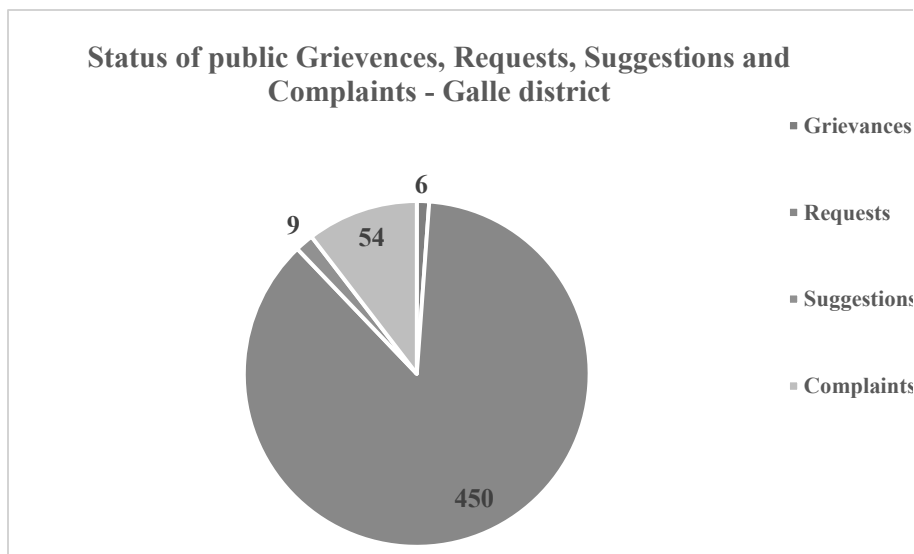
Table 4.5 Classified summary of public grievances, requests, suggestions and complaints

District	Contract Package	No. of Roads	No. of Grievances	No. of Requests	No. of Suggestions	No. of Complaints	Total	No. Attended	No. Unattended	No. of Completely settled	Solutions in progress
Galle	G1	08	00	84	09	33	126	126	00	38	88
	G2	13	06	65	00	17	88	88	00	21	67
	G3	08	00	301	00	04	305	305	00	261	44
<b>Sub Total</b>		<b>29</b>	<b>06</b>	<b>450</b>	<b>09</b>	<b>54</b>	<b>519</b>	<b>519</b>	<b>00</b>	<b>320</b>	<b>199</b>
Matara	M1	22	00	88	18	36	142	142	00	128	14
	M2	09	03	23	00	42	68	68	00	19	49
	M3	11	00	12	00	16	28	28	00	03	25
<b>Sub Total</b>		<b>42</b>	<b>03</b>	<b>123</b>	<b>18</b>	<b>94</b>	<b>238</b>	<b>238</b>	<b>00</b>	<b>150</b>	<b>88</b>
Hambantota	H1	08	00	03	00	10	13	13	00	12	01
	H2	12	05	45	01	10	61	61	00	25	36
	H3	08	00	240	02	03	245	245	00	117	128
<b>Sub Total</b>		<b>28</b>	<b>05</b>	<b>288</b>	<b>03</b>	<b>23</b>	<b>319</b>	<b>319</b>	<b>00</b>	<b>154</b>	<b>165</b>
<b>Total</b>		<b>99</b>	<b>14</b>	<b>861</b>	<b>30</b>	<b>171</b>	<b>1076</b>	<b>1076</b>	<b>00</b>	<b>624</b>	<b>452</b>

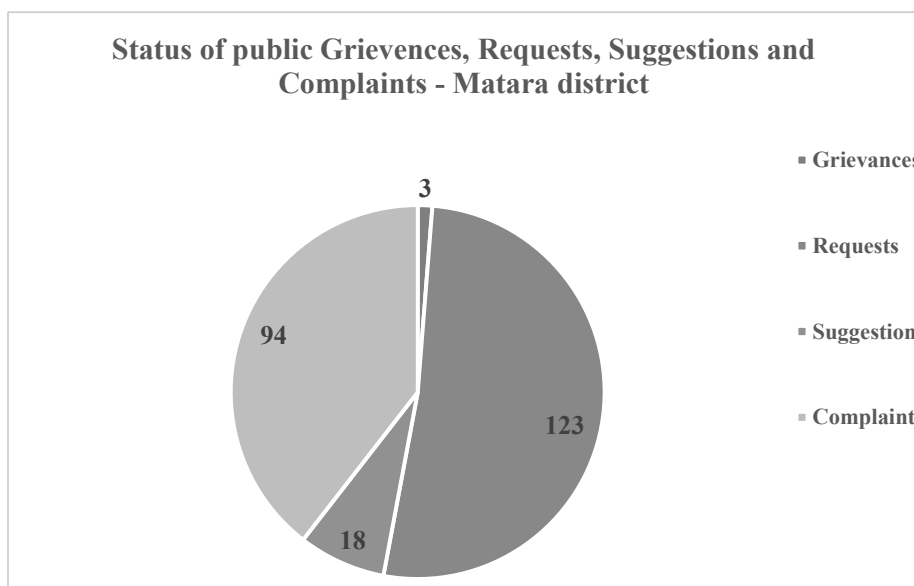
During the period under review, 1076 grievances received in nine (9) Contract Packages in the three districts out of which 624 have been completely settled to the satisfaction of the complainers and 452 are being processed.

## Graphical presentation of status of public Grievances, Requests, Suggestions and Complaints

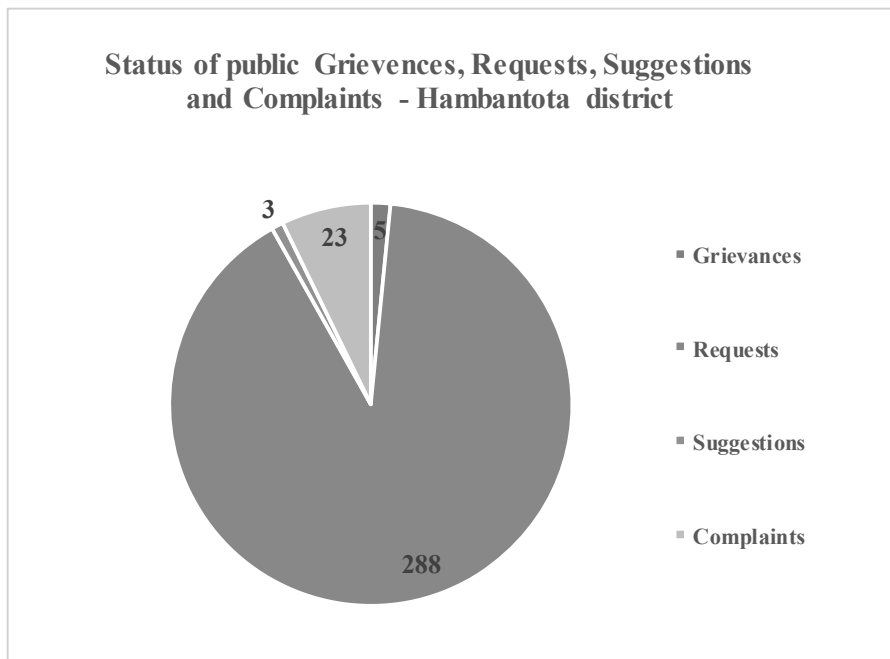
Graph 4.1 Status of public Grievances, Requests, Suggestions and Complaints – Galle district



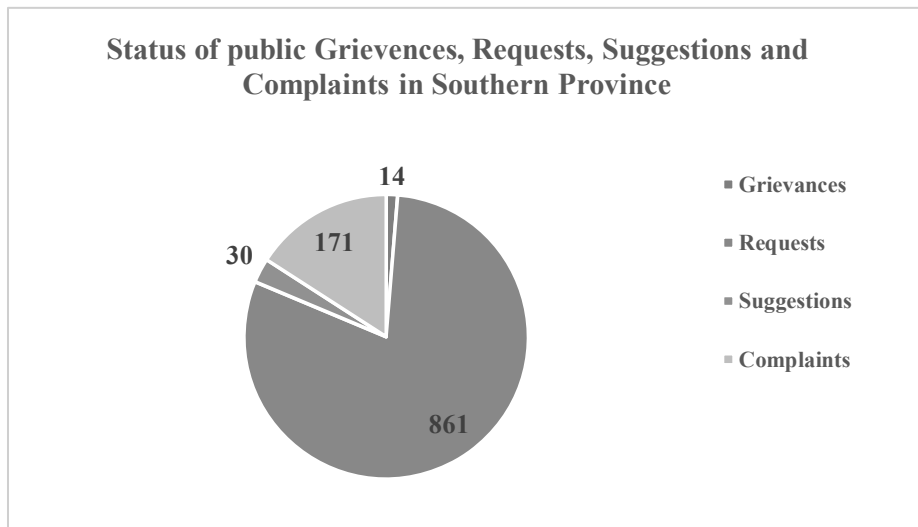
Graph 4.2 Status of public Grievances, Requests, Suggestions and Complaints – Matara district



Graph 4.3 Status of public Grievances, Requests, Suggestions and Complaints – Hambantota district



Graph 4.4 Status of public Grievances, Requests, Suggestions and Complaints – Southern Province



### 4.2.3 Addressing Grievances (Complaints, Grievances, Requests and Suggestions) at three (3) levels;

In order to address the public grievances efficiently and to the satisfaction of complainers, iRoad (SP) has established a mechanism to address those complaints at (1) grassroots level, (2) GND level GRCs and (3) DSD level GRCs. The below table shows the solutions given for public complaints at different levels during the period under review.

Table 4.6 – Solutions given for Complaints at (1) grassroots, (2) GND and (3) DSD levels

District	Contract Package	No. of Complaints (Grievances, Requests, Suggestions, Complaints)	Solution in progress	No. settled	No. Unattended	Settled at grass root level (1)	Settled at GND level (2)	Settled at DSD level (3)
Galle	G1	126	88	38	00	34	03	01
	G2	88	67	21	00	20	01	00
	G3	305	44	261	00	198	61	02
<b>Sub total</b>		<b>519</b>	<b>199</b>	<b>320</b>	<b>00</b>	<b>252</b>	<b>65</b>	<b>03</b>
Matara	M1	142	14	128	00	102	16	10
	M2	68	49	19	00	08	07	04
	M3	28	25	03	00	01	01	01
<b>Sub total</b>		<b>238</b>	<b>88</b>	<b>150</b>	<b>00</b>	<b>111</b>	<b>24</b>	<b>15</b>
Hambantota	H1	13	01	12	00	08	02	02
	H2	61	36	25	00	21	02	02
	H3	245	128	117	00	84	29	04
<b>Sub total</b>		<b>319</b>	<b>165</b>	<b>154</b>	<b>00</b>	<b>113</b>	<b>33</b>	<b>08</b>
<b>Total</b>		<b>1076</b>	<b>452</b>	<b>624</b>	<b>00</b>	<b>476</b>	<b>122</b>	<b>26</b>

### 4.2.4 Design Changes made due to Public Requests;

In establishing the concept of Context Sensitive Design (CSD), the project has responded the public voices and accommodate their requests/grievances in to the road designs within the provisions of Loan Covenant.

Design changes made to the original designs of roads due to public requests are appeared in the table below;

Table 4.7 Design changes made to the original design of roads due to public requests

Contract Package	ID No.	Name of the Road	Changes Made to the Original Design	Social/ Environment (S/E )	Discussed at GRC		Cost incurred (LKR)		Satisfaction of the Complainer
					GND (Y/N)	DSD (Y/N)	Employer	Contractor	
G1	1	Mavita - Dooliella	Retainig wall Irrigation channal 1+720-1+760	S	Y	N	Within the Estimate	-	Satisfied
G1	1	Mavita - Dooliella	concrete paving 0+050 - 0+110	S	N	Y	Within the Estimate	-	Satisfied
G2	12	Mayakaduwa - Wadikanda	0+000 to 0+050/ Applied concrete pavement instead of layering asphalt	S	Y	Y	5,485,875.00	-	Satisfied
G2	37	K.G. Palis Mw	1+330/ Constructed a Cascade	S	Y	N	593,128.00	-	Satisfied
G3	49	Manampita-dehigahabedda	Reconstructed a hume pipe culvert (0+820)	S	N	N	-	400 000	Satisfied
G3	51	Welibokkuwa-Banwelgodella	Reconstructed a hume pipe culvert (0+556)	S	N	N	-	400 000	Satisfied
G3	44A	Elpitiya -Awittawa	Concrete drain (6+467-6+521 RHS)	S	N	N	-	800 000	Satisfied
G3	44A	Elpitiya -Awittawa	Provide earth drain (6+930-6-975RHS)	S	N	N	-	25,000	Satisfied
G3	44A	Elpitiya -Awittawa	Concrete drain (6+980-6+993 LHS)	S	N	N	-	200 000	Satisfied
G3	44A	Elpitiya -Awittawa	Concrete drain with cover slabs (8+060-8+130 LHS)	S	N	N	-	1 million	Satisfied
G3	44A	Elpitiya -Awittawa	Constructed a new 1500 box culvert (6+928)	S	N	N	-	1 million	Satisfied
M2	3	Iluppella - Mahingoda – Bopitiya	Provided an irrigation crossing; 4+200, 4+955;	E	N	N	Within the Estimate	-	Satisfied
M2	4	Akuressa - Katanvila	Provided a retaining wall 1+427-1+468 LHS	S	N	N	Within the Estimate	-	Satisfied
M2	4	Akuressa - Katanvila	Provided a retaining wall 1+250-1+320LHS	S	N	N	Within the Estimate	-	Satisfied

M2	4	Akuressa - Katanvila	Provided a house access 1+332 LHS	S	N	N	Within the Estimate	-	Satisfied
M2	4	Akuressa - Katanvila	Provided a house access 1+432LHS	S	N	N	Within the Estimate	-	Satisfied
M2	4	Akuressa - Katanvila	Hume pipe 1+600	E	N	N	Within the Estimate	-	Satisfied
M2	56	Kongala D.C Abeywickrama Road	Provided a retaining wall 0+350-0+411 RHS	S	N	N	Within the Estimate	-	Satisfied
M2	56	Kongala D.C Abeywickrama Road	Provided a U drain 2+188-2+252 RHS	E	N	N	Within the Estimate	-	Satisfied
M2	56	Kongala D.C Abeywickrama Road	Asphalt road converted to concrete road 0+501-0+800	S	N	N	Within the Estimate	-	Satisfied
M2	57A	Thumbe - Kongala	Provided a gabion wall 1+547-1+541 LHS	S	N	N	Within the Estimate	-	Satisfied
M2	57A	Thumbe - Kongala	Provided a gabion wall 4+542.5-4.560 LHS	S	N	N	Within the Estimate	-	Satisfied
H2	43	Kadigamuwa - Palamkada Road	Initial proposal for Bridge Repairing at 0+370, Public request to re construct the bridge unless repairing	S	Y	N	Within the Estimate	Within the Estimate	Satisfied
H2	7	Tholapothewatta Road	0+600-0+800, Existing slope was over 24% and it reduced and maintained at 19%	S	Y	N	Within the Estimate	Within the Estimate	Satisfied
H2	24	Ch. 1+900-1+700 surface concreteing instead of Asphalting	Ch. 1+900-1+700 surface concreteing instead of Asphalting, as per to ptrevent the innundation of adjusent lands	S	Y	Y	Within the Estimate	Within the Estimate	Satisfied
H2	25	Uswewa Via Pahalagama Sooriapokuna Road	3+200, Causeway ramp changed as per the public request,	S	Y	Y	Within the Estimate	Within the Estimate	Satisfied
H2	43	Kadigamuwa - Palamkada Road	Re-arranging the horizontal alignment at 0+320-0+420 by avoiding a two sharp bends and proposing the line in to straight.	S	Y	Y	Within the Estimate	Within the Estimate	Satisfied

### 4.3 HIV/AIDS Prevention and Health awareness programs –Step 2

As per the Contract Document Volume 3 S.Cl.108.3 and Volume 5A BOQ pay item 108.3 (1) the contractors have to conduct HIV/AIDS prevention and Health programs to all site staff, laborers and the immediate local communities via an approved service provider, in accordance with the S.Cl.6.7 of Conditions of Contract and the need of providing awareness on STD including HIV/ AIDS and human trafficking for civil works employees and communities is also specified under item 1.6 of GAP. The project has made arrangements to implement the programs in two steps at each Contract package:

- Step 1- HIV/AIDS prevention and Health programs for Contractor's staff and laborers.
- Step 2- HIV/AIDS prevention and Health programs for immediate local communities.

Project Implementation Consultants assisted the Contractors to select the service provider through a competitive bidding procedure to conduct Step1 and 2 programs with the intention of implementing more efficient and effective programs for the benefit of expected target groups.

The programs were specifically designed to cover the following areas;

- Epidemiological and behavioral surveillance; compilation of other health and demographic data relevant to HIV risks.
- Health education and risk education activities, including individual, groups and community level interventions.
- Accessible diagnosis and treatment of other Sexually Transmitted Diseases (STD).
- Public information and education programs.
- Health camp to the participants; check-up diabetic condition and necessary step to address blood sugar issues.
- HIV prevention capacity building activities.

Table 4.8 Work plan for conducting HIV/AIDS prevention and Health programs- Step 2

<b>HIV/AIDS prevention and Health programs –Step 02</b>				
<b>Date</b>	<b>District</b>	<b>Package</b>	<b>Contractor</b>	<b>Status</b>
12/07/2016	Hambantota	H1	KDAW	Conducted
13/07/2016	Hambantota	H2	CML	Conducted
28/07/2016	Galle	G3	KDAW	Conducted



*Picture 27. Dr. Liyanage(MBBS) leads the discussion with the participants at HIV/AIDS prevention and Health program held at Golden Edge hotel, Elpitiya, Galle (G3 - Contract Package)*

### 4.3.1 HIV/AIDS Prevention and Health Awareness Programs Conducted –Step 2

According to the work plan, three (03) nos. of HIV/AIDS prevention and Health awareness programs under Step 2 have been conducted during the month of July, 2016.

Table 4.9 Implementation of HIV/AIDS Prevention and Health awareness Programmes-Step 2

Date	S/N	District	Contract Package	Venue	Male	Female	Total	Female %
12.07.2016	01	Hambantota	H1	Sewa Lanka, Nonagama	99	08	107	8
13.07.2016	06	Hambantota	H2	Ovindee Hotel, Beliaththa	109	15	124	12
28.07.2016	07	Galle	G3	Golden Edge, Elpitiya	36	39	75	52
<b>Total</b>					<b>244</b>	<b>62</b>	<b>306</b>	<b>24</b>

A Substantial percentage (24%) of female participation was witnessed at Step 2 HIV/AIDS prevention and Health awareness programmes.



**Picture 28. Participants are more attentive at HIV/AIDS prevention and Health program held at Sewa Lanka, Nonagama, Hambantota (H1- Contract Package)**



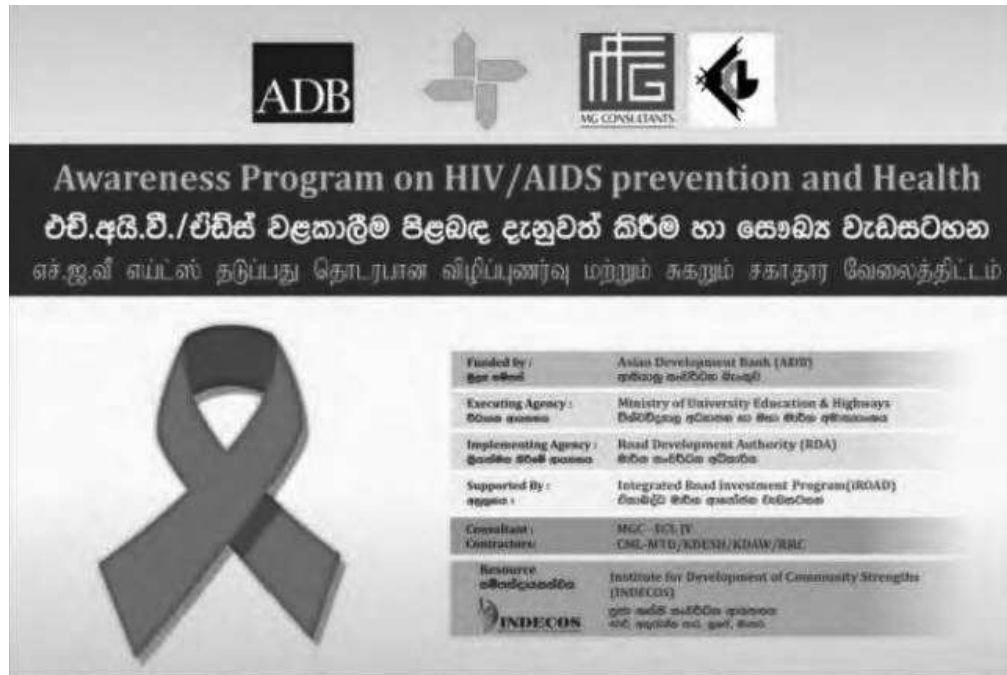


***Picture 29. Mr. Roshan Wijesuriya, (Environmental officer) welcome the participants at HIV/AIDS prevention and Health program held at Ovindee Hotel, Beliaththa Hambantota (H2 Contract Package)***

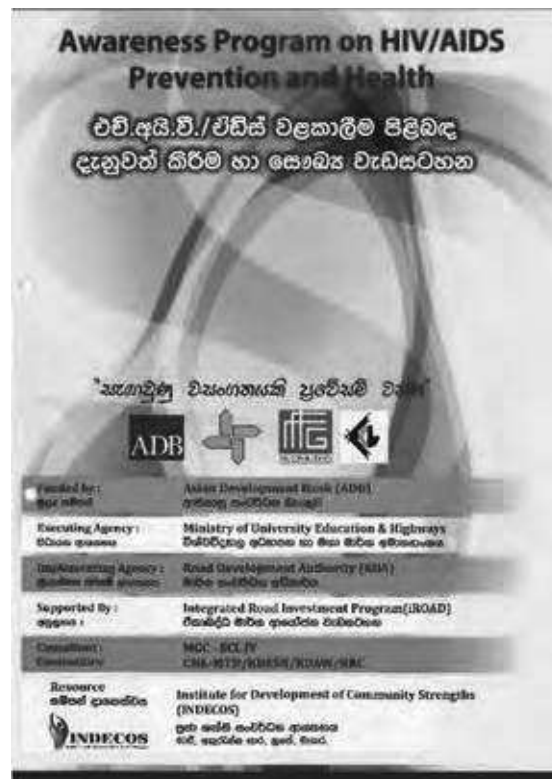


***Picture 30. An Expert delivers a lecture at HIV/AIDS prevention and Health program conducted at Ovindee Hotel, Beliaththa, Hambantota (H2 Contract Package)***

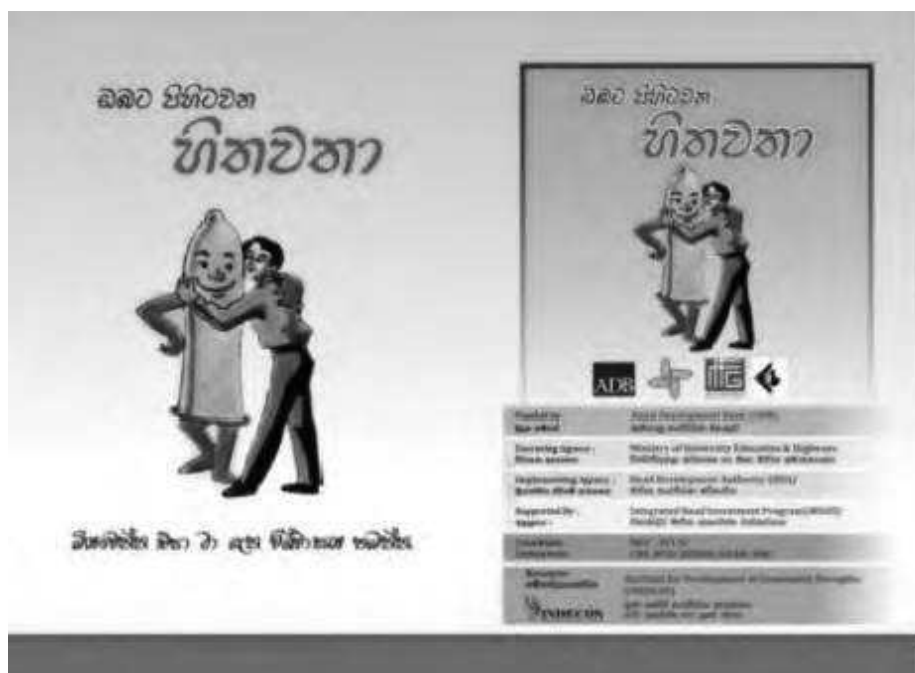
Training materials used at the workshops are shown below;



Picture 31. Banner displayed at workshops



Picture 32. Docket distributed to participants



Picture 33. Booklet 1 distributed among participants



Picture 34. Booklet 2 distributed among participants

Health camp conducted together with HIV/AIDS prevention and Health program.

Medical Camps were conducted prior to the commencement of each HIV/AIDS prevention and Health programmes. Medical Camps were highly benefited for the participants. Some activities of the Health Camps conducted in four different locations are shown in following images.



*Pictuer 35*



*Pictuer 36*

***Registration at health camp conducted on 13 07 2016 at Ovindee Hotel, Beliaththa, Hambantota (H2 Contract Package)***



*Picture 37*



*Picture 38*

***Health camp conducted on 28. 07. 2016 at Golden edge , Galle(G3 Contract Package)***



*Pictuer 39*



*Pictuer 40*

***Health camp conducted on 12 .07. 2016 at Sewalanka Hall, Nonagama , Hambanthota(H1 Contract Package)***

A comprehensive report has been compiled on HIV/AIDS prevention and Health programmes conducted and dispatched to all relevant institutions and personnel.

#### 4.4 Road Safety Awareness Programs for school community

Road Safety Awareness (RSA) programs for school community were scheduled to conduct in selected nine schools in all Contract Packages of Galle, Matara and Hambantota districts in Southern Province as per Appendix 3 of the Resettlement Framework (RF) and item 1.1 and 1.2 of GAP.

The target group of the RSA school programs were the school children in Grades 9, 10 and 11, their parents and school teachers. Two (02) RSA programs have been conducted during the period under review.

Table 4.10 Work Plan for the implementation of Road Safety Awareness Programs

S/N	District	Contract Package	Date	Start Time	Finish Time	Venue	Address
08	Galle	G1	05.07.2016	11.00 am	1.30 pm	G/Batuwangala Maha Vidyalaya	Batuwangala, Neluwa
09	Galle	G2	29.07.2016	11.00 am	1.30 pm	G/Ginimallagaha Maha vidyalaya	Ginimallagaha, Galle



**Picture 41. Social, Gender and Resettlement Specialist lights the traditional oil lamp at the RSA Programme held at G/Ginimallagaha Maha vidyalaya on 29<sup>th</sup> July 2016– (G2,Contract Package)**



***Picture 42. Resident Engineer, Galle district addresses RSA held at G/Ginimallagaha Maha Vidyalaya on 29<sup>th</sup> July 2016– (G2, Contract Package)***



***Picture 43. School child (female) makes concluding remarks of the RSA Programme held at G/Ginimallagaha Maha Vidyalaya on 29<sup>th</sup> July 2016– (G2, Contract Package)***



***Picture 44. The principal of G/Batuwangala Maha Vidyalaya lighting the traditional oil lamp at RSA workshop held on 05<sup>th</sup> July,2016***



***Picture 45. Rural Roads Design and Road Safety engineer makes his presentation on road safety at G/Batuwangala Maha Vidyalaya, G1, Contract Package, Galle district.***



**Picture 46. Police officer of Neluwa police station makes a presentation on road safety at RSA programme held at G/ Batuwangala Maha Vidyalaya, G1- Contract Package, Galle district**

Table 4.11 Road Safety Awareness programs conducted.

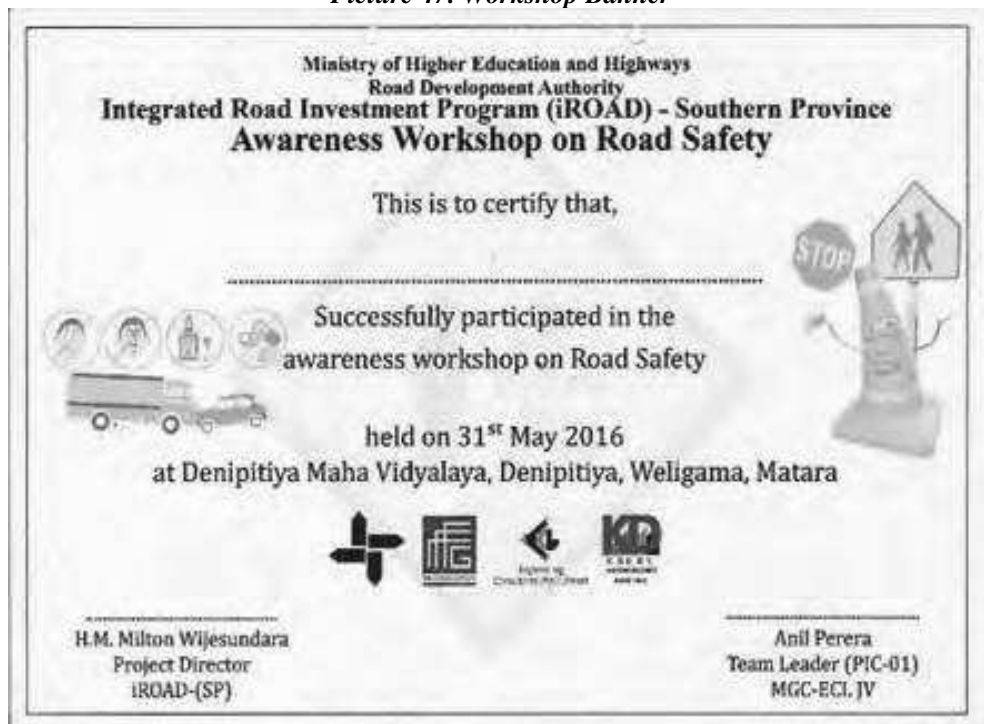
S/ N	District	Contract Package	Date	Venue	School children		Teachers		Parents		Others (Staff of MG-ECL, Contractor, School)		Total			Percentage	
					Male	Female	Male	Female	Male	Female	Male	Female	Male	Female	Total	Male%	Female%
01	Galle	G1	05.07.2016	G/ Batuwangala Maha Vidyalaya	78	92	09	12	00	08	25	06	112	118	230	49	51
02	Galle	G2	29.07.2016	G/ Ginimallagaha Maha Vidyalaya	43	58	03	07	00	00	25	08	71	73	144	49	51
<b>Total</b>					<b>121</b>	<b>150</b>	<b>12</b>	<b>19</b>	<b>00</b>	<b>08</b>	<b>50</b>	<b>14</b>	<b>183</b>	<b>191</b>	<b>374</b>	<b>49</b>	<b>51</b>

Average percentage of female participation at Road Safety Awareness programs conducted is 51%

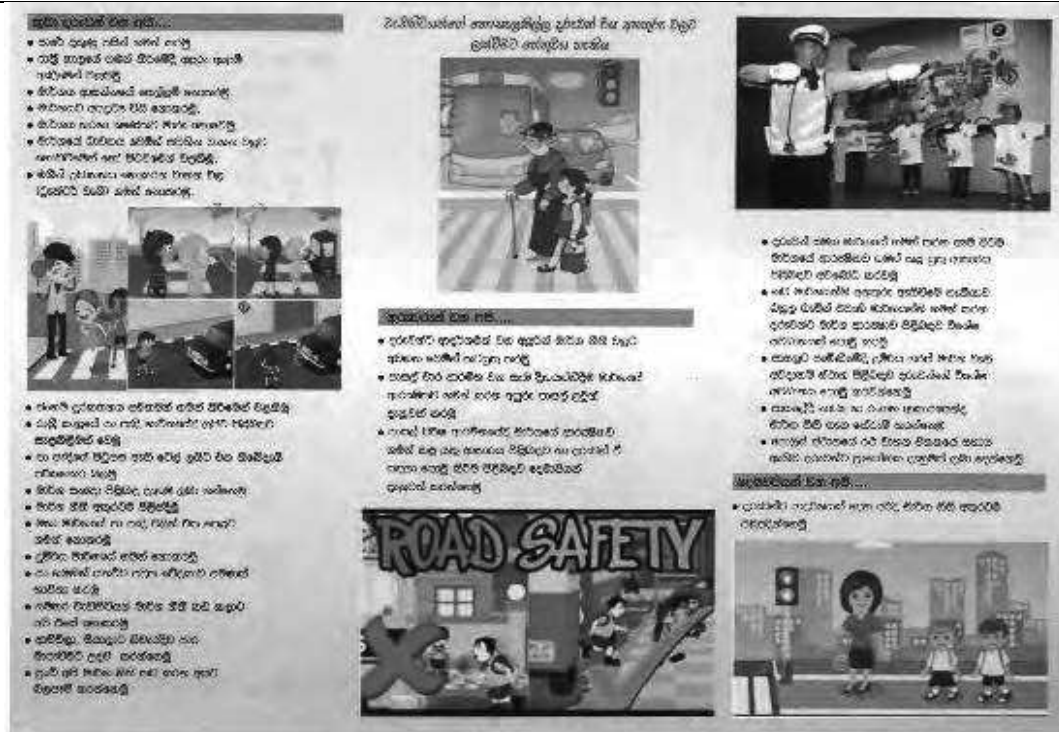




Picture 47. Workshop Banner



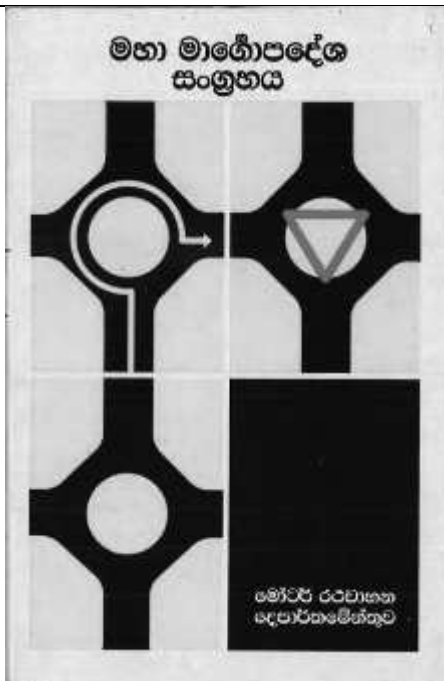
Picture 48. Certificate awarded to the students



Picture 49. Front page of the brochure



Picture 50. Back page of the brochure



Picture 51. “Highway Code” booklet issued by the Motor Traffic Department

#### 4.5 Corporate Social Responsibility (CSR) implemented by Contractors and PIC

In addition to the civil work construction, the Contractors have organized and conducted substantial number of CSR programmes with the support of PIC. The main objectives of conducting CSR programmes are;

- To identify the felt need of vulnerable groups in the project area and to serve them with tangible or/and intangible (knowledge, awareness etc.) benefits.
- Build up close relationship with communities in the project area
- Enhance the goodwill about the project and the Contractors

An example of Cooperate Social Responsibility (CSR) conducted is appeared in *Annexure 04*

A brief of information about the **CSR programmes** conducted is shown in the table below;

Table 4.12 Cooperate Social Responsibility (CSR) Programmes conducted during the period under review  
(1 July to 31 December, 2016)

District	Package	S/N	CSR Programmes conducted	Objective/s	No. of participants / Beneficiaries		
					Male	Female	Total
Galle	G1		“Sramadana” campaign with selected villagers in Contract Package G1.	Established coordination among villagers.	65	42	107
	G2		Sponsored for a children’s procession - Saralanakara Junior School	Build rapport with school community.	57	71	128

			Improvement of access road to “Batuwabthudawa temple	Enhance the goodwill of the project.	12	0	12
					Except general public		
			Improvement of access road to Thelikada police station	Build up close coordination with law enforcement institution.	26	6	32
	G3		Constructed access road (ABC & asphalt) to Elpitiya MOH office	To reach easily for MOH office staff and public	29	35	64
					Except general public		
			Constructed access road (ABC & Asphalt) to Ananda primary college, Elpitiya	To reach easily for school staff student and vehicles.	87	69	156
			Except general public				
		Constructed access road to Silumina Viharaya	To overcome the access problem for all villagers and monks	18	11	29	
			Except general public				
	M1		Eye camp 01	Improve relationship among villagers thought conducting eye camping for communities	46	38	84
			Eye camp 02	Improve relationship among villagers thought conducting eye camping for communities	60	64	124
			School playground preparation	To provide improved playground to school children.	58	61	119
			“Dansal” (meal donation) programme	Improve relationship between villagers and the iRoad project.	120	146	266
	M2		Environmental awareness program for school children	Create awareness on the importance of protecting Bio diversity and tree planting.	42	40	82
Hambantota	H1		Improvement of “Arama” (Monastery) Maththala.	Provide better facilities	06	18	24
	H2		Medical camp and eye clinic	To provide medical treatments to villagers	70	82	152
			Provide drinking water for needy villagers	Providing drinking water during a drought to the villagers as a temporary solution	89	160	249

			Free dental camp and blood testing camp	Giving them a proper medical treatment in free for the dental cure, Free testing of the blood and urine as to check the diabetic and cholesterol level, giving the better instructions to maintain the healthy life throughout the life.	65	35	100
<b>Total beneficiaries</b>					<b>850</b>	<b>878</b>	<b>1,728</b>

It is noteworthy that the average percentage of 50.8 beneficiaries were female from the total participants attended to the social work programmes conducted in Galle, Matara and Hambantota during the period under review.



*Picture 52*



*Picture 53*

***Picture 52 & 53. Dental Clinic & Health Camp organized by CML-MTD Pvt. Ltd (H2- Contract Package) at Kadigamuwa Gami Diriya Hall, Hambantota***



*Picture 54*



*Picture 55*

***Picture 54 & 55. Health Camp organized by CML-MTD Pvt. Ltd (H2- Contract Package) at Sri Asokaramaya, Kadurupokuna, Hambantota***

## 5. LAND DONATION

Paragraph four (4) of the Resettlement Framework (RF) for the Integrated Road Investment Programme (iRoad) states that “for the rural roads improvements will be undertaken completely within the existing Right of Way (ROW) which is between 2.5m to 5.5m. However, in paragraph eight (8) it states that voluntary land donation will be used if additional strip of private land is required. Appendix 3 of the RF further explains that land donation will be method if private land is required for the iRoad. Voluntary donation of land involves the contribution by individuals of land for the project that has the community benefits including rural roads that are part of the community driven development. The basic principles are the following:

- that the project benefits will realistically offset the size of the donated land;
- in case negotiations for voluntary land donation fail, eminent domain or other powers of the state will not be used;
- a maximum of 5% of land can be donated, particularly for the vulnerable households; and for households donating land, no physical displacement will take place

As per Appendix 3 of the Resettlement Framework (RF), written confirmation is required for the donation made by the land owners.

### Written Confirmation of land donation

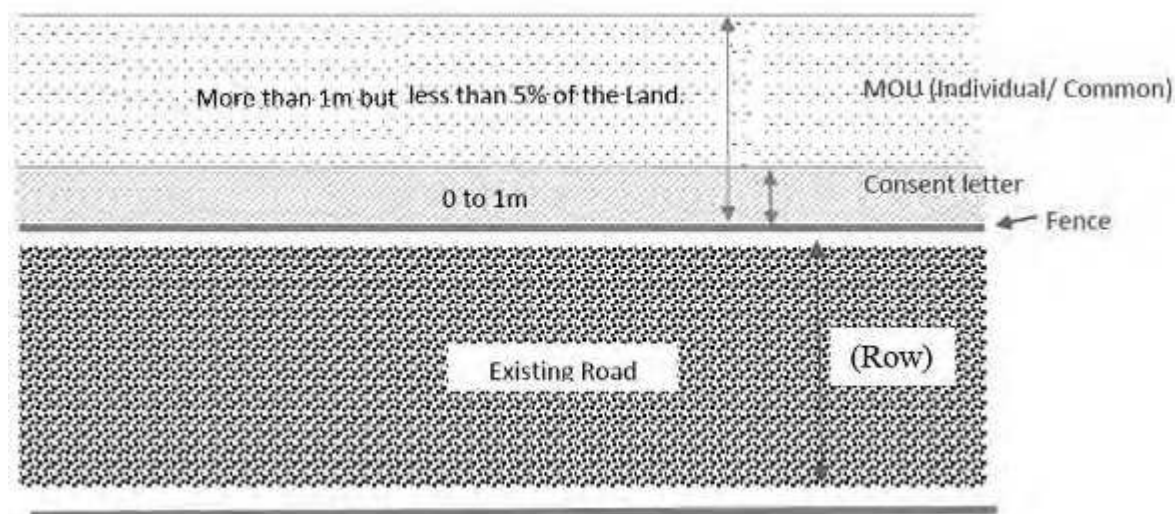


Figure 5. 1 Written confirmation of land donation

If any land owner is willing to donate a strip of his/her land for the improvement of roads that should be confirmed by a written document. As illustrated in the above diagram, if the width of such land strip is more than 01 meter, relevant Project Engineer (PE) shall have to enter in to a **Memorandum of Understanding (MOU)** with the land owner. In this regard, PE shall ensure that the donated land strip is less than 5% of the owner’s entire land as per Resettlement Framework (RF).

If the width of such land strip is less than 01 meter, PE shall obtain a duly signed **letter of consent** from the land owner.

The above system has been adopted to avoid confusions as to what level the agreements will be signed. This system is currently practicing in other PICs also.

## 5.1 Status of Land Donation

In the implementation of the iRoad, it was identified that there had been occasions where additional land strips were needed to carry out the road improvement works.

Hence, the project has followed the procedure as per guidelines stipulated in the RF for land donation as follows;

- Disseminate information to all relevant agencies on project information and the land donation concept. Continuous public awareness on land donation process has encouraged people to involve in project activities positively. Methods that are being used to create awareness among public and other stakeholders are one on one discussions, Focus Group Discussions (FGD) and GRC meetings. A Public Notice has been developed in local language in accordance with the guidelines laid down under Appendix 3 of the Resettlement Framework (RF). The public notices are being displayed at notice boards of every Grama Niladhari offices located in the project area. As a result, land owner having understand the value of donating their pieces of lands for the purpose of improving/rehabilitation of roads, 16 land owners have willingly agreed to donate their pieces of lands to meet the additional land requirement for the improvement of roads.
- Identify and verify the land to be donated.
- Raise awareness and undertake meaningful consultation and negotiation with APs.
- Signing of Memorandums of Understanding (MOUs) by the land owners and the relevant Project Engineers. (This activity ensures the transparency through written confirmation.)

Memorandums of Understanding (MOUs): The project has introduced two types of MOUs and translated in to local language.

- a) MOU to be signed by a single private owner  
and
- b) MOU to be signed by group of private land owners.

In addition, if the donated land is less than one meter, consent letters have been obtained from the land owners.

**Sample of an impact of land donation:**

**Comparison of pre and current condition at 0+500 to 0+550 at Hapugala Eriyagaha road R ID22**

Comparison the spatial differences at 0+500 Chain age to 0+550 Chain age at Hapugala Eriyagaha Road ID 22. In this location two land donations were proceeded to widen the road. There was a boundary wall at 0+540 RHS which was obstructed the sufficient width at this location. And also there was a blind curve at left hand side and the land owner requested a retaining wall to donate his land as compensation. So it was decided to construct a retaining wall at left hand side and shifted the right hand side boundary wall which was obstructed to the road width.

Mr. Dhamika Kahadoowaarachchi of Hapugala volunteered to donate required land strip to widen the LHS of the road and Mr. S.A.Alwis of Hapugala donated the land strip to widen the RHS of the road with written confirmations.

The following photographs were taken at this locations which show the pre and current condition of the location.



***Picture 56- Before condition at 0+500 RHS***



***Picture 57-Current condition at 0+500RHS***



***Picture 58 -Before condition at 0+550LHS***



***Picture 59-Current condition at 0+550 LHS***



Table: 5.1 Memorandums of Understanding (MOUs) –individual – (1 July to 31 December, 2016);

District	Package	S/N	Name of the Road	Road ID	Chainage	Side of the road	Ownership of land (Government / Private)	Reasons for additional land requirement	Name & Address of the land owner
Hambantota	H2	01	Siyabalahena Road	5	0+820	LHS	Private	Insufficient road width	Kumarasiri Athapatt, “Araliya Uyana”, Nakulugamuwa
	H3	02	Warapitiya Hospital to Keradeniya road	39	0+000-0+120	LHS	Private	Widening the road	J.G. Suramya Diluka Kumari, Bathala Koratuwa , Rammala, Warapitiya
		03	Warapitiya Hospital to Keradeniya road	39	0+060-0+105	RHS	Private	Widening the road	J.E.A. Chaminda Sudarshana, 63, Ketakala Koratuwa, Rammala, Warapitiya
		04	Warapitiya Hospital to Keradeniya road	39	0+120-0+220	RHS	Private	Widening the road	Weththasin Liyanage Babyhami, Doleadeniya , Rammala , Warapitiya
		05	Warapitiya Hospital to Keradeniya road	39	0+120-0+220	LHS	Private	Widening the road	Kandambige Malani, Thilaka Sewana, Rammala, Warapitiya



**Picture 60.H2 - 0+820 (LHS) Road ID-05**



**Picture 61.H3 - 0+000-0+120 (LHS) Road ID-39**



**Picture 62.H3 - 0+060-0+105 (RHS) Road ID-39**



**Picture 63.H3 - 0+120-0+220 (RHS) Road ID-39**



**Picture 64.H3 - 0+060-0+105 (LHS) Road ID-39**

Table: 5.2 Memorandums of Understanding (MOUs) –Common (1 July to 31 December, 2016);

District	Package	S / N	Name of the Road	Road ID	Chainage	Side of the road	Ownership of land (Government / Private)	Reason for additional land requirement	Name & Address of the land owner
Galle	G1	1	Mavita Dooliella	1	0+320-0+380 1+938-1+955	L/R	Private	Narrow road condition	05 Nos. of residents living along the roads have signed the MOU (Fig.01, Fig.02, Fig.03, Fig.04, Fig.05)



Picture 65. 01 - 0+320-0+380 (LHS) Road ID-01



Picture 66. 02 - 1+440-1+505 (RHS) Road ID-01



Picture 67. 03 - 1+440-1+505 (RHS) Road ID-01



**Picture 68. 04 - 1+718-1+1745 (LHS) Road ID-01**



**Picture 69. 05 - 1+938-1+955 (LHS) Road ID-01**

Table: 5.3 Confirmation of land donation –Consent letters (1 July to 31 December, 2016);

District	Package	S / N	Name of the Road	Road ID	Chainage	Side of the road	Ownership of land (Government / Private)	Reason for additional land requirement	Name & Address of the land owner
Galle	G1	1	Mavita- Doolialla	1	0+320 – 0+380	LHS	Private	Road is narrow with a bend	E.G. Wimalaseena, Mavita, Neluwa.
	G2	2	Janahitha tea factory- Nawugala school via usbim janapadaya.	34	0+796	RHS	Private	Road widening	U.P.Disna Malkanthi, Kohiladeniya, Newungala, Kottawagama.
		3		34	1+206	RHS	Private	Road widening	N.B.Somapala, Kohiladeniya, Newungala, Kottawa.
		4		34	1+647	RHS	Private	Road widening	H.G.Nandana, Newungala, Kottawa.
		5		34	1+800	RHS	Private	Road widening	N.A.Thilakawathee, Newungla ,Bedi meda.
		6		34	2+290	LHS	Private	Road widening	G.P.S.Dhanasiri, Ruwanwasa, Kottawagama.
		7		34	2+356	RHS	Private	Road widening	H.H.Premadasa, Kumudu, Newungala south, Kottawagama.
		8		34	2+410	RHS	Private	Road widening	H.L.G.Karunaratne ,Liyanage stores, Newungala south.
		9		34	0+796	RHS	Private	Road widening	Chompika Lakmali, Sumanasiri niwasa, Newungala south, Kottawagama.
		10		34	1+206	RHS	Private	Road widening	M.V.Chandana, Newungala south, Kottawagama.
		11							W.G.Sirisena, Newungala

				34	1+647	LHS	Private	Road widening	south,Kottawagama.
		12	Hiyare East – School road via Kluwala Bedipita Hawupe	27	0+801	RHS	Private	Road widening	W.Anil Priyantha,Hiyare East,Hiyare.
		13		27	0+000	RHS	Private	Road widening	P.H.Senavirathne, Hiyare East,Hiyare.
		14	Yakkalamulla-via Udumalagala to Nakiyadeniya	33	0+330	RHS	Private	Road widening	K.G.A.Chamila, Kankanamge watta, Yakkalamulla.
		15		33	1+099	RHS	Private	Road widening	U.G.S.PushpaKumara,Me daovita watta, Udumalagala, Nakiyadeniya.
		16		33	1+270	LHS	Private	Road widening	U.K.Sunil Shantha,15A,Dampela watta,Udumalagala, Nakiyadeniya.
		17		33	1+290	LHS	Private	Road widening	T.M.Chandra Kumara,Dampella watta,Udumalagala, Nakiyadeniya
		18		33	2+080	LHS	Private	Road widening	U.L.G.Wasantha, Shrama shakthi,Udumalagala,Ihal a nakiyadeniya
		19		33	2+557	LHS	Private	Road widening	D.L.Hemachandra,Udaha pittaniya,Ihala nakiyadeniya, Nakiyadeniya
		20		33	2+588	RHS	Private	Road widening	D.L.Milinda kumara,Udaha pittaniya,Ihala nakiyadeniya, Nakiyadeniya
		21		33	3+332	RHS	Private	Road widening	D.D.Wickramathilake,Wi ckrama,Saranapala mw,

G3	G3	22		33	3+280-3+300	LHS	Private	Road widening	Nakiyadeniya. H.P.Ranjith Udayanga,Nugagaha gedara,Sri Saranapla mw,Nakiyadeniya.
		23	Elpitiya -Avittawa	2.44A	8+868-8+913	RHS	Private	Road widening	N.Sirimanna,Avitta watta,Avittawa, Ganegoda.
		24		2.44A	8+960-8+982	RHS	Private	Road widening	S.Dissanayake,Naduwa tta,Avittawa,Ganegoda
		25		2.44A	8+940-8+960	RHS	Private	Road widening	U Rathnapala,Naduwa tta,Avittawa,Ganegoda.
		26	Nandana school to 05 <sup>th</sup> mile post via Wathuruwila	2.54	9+020	RHS	Private	Road widening	P.W.R. Pathiraja,Avittawa,Ganeg oda
		27	Dadley Senanayake rd	2.62	1+088-1+130	RHS	Private	Road widening	G.R.Prem,Delmahara janapadaya,Waragoda,Kh awa.
		28	Elpitiya -Avittawa	2.44A	1+130-1+210	RHS	Private	Road widening	G.Madanayake, Weragoda, ArachchigedarawatTa, Kahawa.
		29	Pinikahana - Puwakdola	2.43	0+350-0+520	RHS	Share	Road widening	K.P.G.Sunil Bandula,Pansala asala,Pinikahana, Kahaduwa.
		30		2.43	0+350 -0+520	RHS	Share	Road widening	K.P.G.Karunasena,Balay awataa,Pinikahana, Khaduwa
		31		2.43	1+100-1+180	RHS	private	Shoulder constructions and drains	V.M Wijithasena,Wijitha,Puw akdola,Pinikahana, Kahaduwa
		32						Shoulder	K.P.G

				2.43	0+350-0+520	RHS	Shares	constructions and drains	Karunasena,Balawaththa, Pinikahana, Kahaduwa
		33		2.43	0+350-0+520	RHS	Shares	Shoulder constructions and drains	K.P.G Sunil,pansala Asala,Pinikahana, kahaduwa
		34		2.43	0+350-0+520	RHS	Shares	Shoulder constructions and drains	Amarasiri Senanayaka,Pinikahana,k ahaduwa
		35		2.43	0+350-0+520	RHS	Shares	Shoulder constructions and drains	K.P.G.Rathnakeerthi, Pinikahana,kahaduwa
		36		2.43	0+350-0+520	RHS	Shares	Shoulder constructions and drains	S.Ranasingha, Pinikahana,kahaduwa
		37		2.43	0+350-0+520	RHS	Shares	Shoulder constructions and drains	G.Sooriya Arachchi,Gunasewana,W aliketiya,kahaduwa
		38		2.43	0+350-0+520	RHS	Shares	Shoulder constructions and drains	S.WijewardanaWijaya niwasa,Godellawaththa,Pi nikahana,kahaduwa
		39		2.43	0+350-0+520	RHS	Shares	Shoulder constructions and drains	K.P.G.S Bandula,Pansala Asala,Pinikahana, kahaduwa
		40		2.43	0800-0+850	RHS	private	Shoulder constructions and drains	T.T.B Siriyawathie, Puwakdola,Pinikahana, Kahaduwa
		41		2.43	2+470-500	B.S	Private	Shoulder constructions and drains	P.M Chandradasa, Kuttியawatta, Agaliya
		42		2.43	2+040	L.H.S	Shares	Shoulder constructions and drains	J.Karunadasa, Kuttியawatta,Agaliya
				2.43	2+140-160	R.H.S	Private	Shoulder constructions and drains	D.W.Jinapla,Uthegoda,K andawatta,Pinikahana,Ka haduwa



		43							
		44		2.43	0800-0+850	LHS	private	Shoulder constructions and drains	P.M.L Priyantha,Puwakdola ,Pinikahana,Kahaduwa
		45	Boossa -hegoda Rajakoratuwa	2.63	1+090	RHS	Private	Shoulder constructions and drains	Thilaka Wikkramagunaratna, delkada,boossa
		46		2.63	1+190	RHS	Private	Shoulder constructions and drains	N.W.K.Kalum Duminda, dalkada watta,maha hegoda,boossa
		47	Rathgama-Ibulgoda	2.6	1+000-1+016	RHS	Private	Shoulder constructions and drains	R. Premadasa, Ibulagoda ,Rathgama
		48	Dudly Senanayaka Mawatha	2.62	1+130-1+210	BS	Private	Shoulder constructions and drains	G.Madanayaka, weragoda,kahawa
		49		2.62	1+088-1+130	BS	Private	Shoulder constructions and drains	G.R Prem,Weragoda, Kahawa
		50		2.59	1+225-1+090	LHS	Private	Shoulder constructions and drains	B.T.C Ranjani,Mihrankanda,Hi kkaduwa
		51	Buddhajayanthi Mawatha-Thiranagama	2.59	1+090-1+120	RHS	Private	Shoulder constructions and drains	S.R Karunathunga, Hikkaduwa
		52		2.59	1+090-1+225	BS	Private	Shoulder constructions and drains	B.T. Sumanarathna,Aravindi, Infront of Sinigama Dewalaya, Hikkaduwa
		53		2.59	1+0901+120	RHS	Private	Shoulder constructions and drains	S.K. Karunanayake, Punchiduwa, Panwila, Hikkaduwa.
		54	Nindana school to 5th mile post via	54	00+730-00+760/	RHS	Private	Shoulder constructions and	M.H.Daniel,Wathurawila, nindana

			waturawila		01+011-01+097			drains	
		55		54	01+011-01+097	LHS	Private	Shoulder constructions and drains	D.M.G. vimalarathne,Nindana
		56		54	7+906	LHS	Private	Shoulder constructions and drains	Somasiri Liyanage,No:27, Depot rd,Elpitiya
		57		54	9+020	RHS	private	Shoulder constructions and drains	P.W.R Pathirana,Awiththawa,Ganegoda.
		58	Welibokkuwa-Banwelgodella	51	9+082	RHS	Private	Shoulder constructions and drains	U.Champika Mahesh,525/A, Awiththawa,Ganegoda.
		59		44A	8+380	RHS	Private	Shoulder constructions and drains	Ajith Sirimanna,Pushpasiri,483 /A,Awiththawa, Ganegoda
		60	Elpitiya – Awiththawa	44A	8+868-8+913	RHS	private	Shoulder constructions and drains	N.Sirimanna,Awiththawa ththa,Awiththawa, Ganegoda
		61		44A	8+960-8+982	RHS	private	Shoulder constructions and drains	S.Dissanayaka,Naduwiththa,Awiththawa, Ganegoda
		62		44A	8+940-8+960	RHS	private	Shoulder constructions and drains	U.Rathnapala,Naduwiththa,Awiththawa, Ganegoda
		63	Dudly Senanayaka Mawatha	62	1+130-1+210	BS	private	Shoulder constructions and drains	G.Madanayaka, Weragoda, Arachchigedarawththa,Ka hawa.
		64		62	1+088-1+130	BS	private	Shoulder constructions and drains	G.R.Prem,Delmahara Janapadaya, Weragoda,Ka hawa
		65	Waduveliwiitiya muktawela junction-	48	1+130-160	LHS	private	Shoulder constructions and	A.D Nanayakkara,Waduveli

			Putuwagoda watta via soratha gammanaya					drains	itiya, Unanwitiya
		66	Galduwa Aranya road	64	0+360-497	RHS	private	Shoulder constructions and drains	D.C Seniwirathna
		67	Galduwa Aranya road	64	0+623-656	LHS	private	Shoulder constructions and drains	N.E Kumara
		68		64	0+676-682	LHS	private	Shoulder constructions and drains	K.N.P De Silva
		69		64	0+695-722	LHS	private	Shoulder constructions and drains	N.Gangabadage
		70		64	2+190-260	LHS	private	Shoulder constructions and drains	K.I Priyanthi
		71		64	0+404-467	LHS	private	Shoulder constructions and drains	J.K De Silva
		72		64	0+792-811	LHS	private	Shoulder constructions and drains	D.H.C Nanda
		73		64	2+010-056	RHS	private	Shoulder constructions and drains	P.W.S Padmini
		74		64	2+210-260	RHS	private	Shoulder constructions and drains	M.B.I Amith
		75		64	2+095	RHS	private	Shoulder constructions and drains	K.A.A Karunarathna
		76		41	1+060-1+112	RHS	private	Shoulder constructions and drains	P.A.D.P Wijerathna
			Goluwamulla- Welimanana- Nagahatenna						

		77	Goluwamulla-Welimanana-Nagahatenna	41	1+160-200	RHS	private	Shoulder constructions and drains	K.L.A Kumara
		78	Rathgama Ibulagoda	60	1+000-1+016	RHS	private	Shoulder constructions and drains	R.Premadasa
		79	Waduveliwiitiya muktawela junction- Putuwagoda watta via soratha gammanaya	48	1+115-185	RHS	private	Shoulder constructions and drains	G.V.P Chethiyawardana
		80		48	1+060-075	RHS	private	Shoulder constructions and drains	K.M.G.K Nilanga
		81		48	1+025-054	LHS	private	Shoulder constructions and drains	K.Wijenayaka
		82		48	1+035-060	RHS	private	Shoulder constructions and drains	A.S.A Amarakoon
		83		48	1+195-242	LHS	private	Shoulder constructions and drains	G.E Koongahage
		84		48	1+100-115	RHS	private	Shoulder constructions and drains	G.E Koongahage
		85		48	1+054-075	LHS	private	Shoulder constructions and drains	B.A Witharana
		86		48	1+200-275	RHS	private	Shoulder constructions and drains	G.V Wanshapala
		87		48	1+242-275	LHS	private	Shoulder constructions and drains	K.Abenayaka
		88	Waduveliwiitiya muktawela junction- Putuwagoda watta via soratha gammanaya	48	1+160-195	LHS	private	Shoulder constructions and drains	T.G.S Gunasekara

								drains	
		89		48	0+550-0+620	LHS	private	Shoulder constructions and drains	G.K Jayawardana
Matara	M1	90	Alapaladeniya-Thalpekumbura	8	0+161- 0+400	LHS	Private	Road widening	Vijaya Dahanayaka, Yayadisa, Alapaladeniya, Morawaka.
		91	Porupitiya Annasigalawila	21	0+630- 0+650	RHS	Private	Road widening	Chaminda Dahanayaka, Hokanda , Waththegoda, 7Porupitiya, Pelawatte, Warella.
		92		21	0+650- 0+670	RHS	Private	Road widening	W.J.K.V. Wijesiri, Kekurana hena, Porupitiya, Warella.
		93		21	0+675-0+713	RHS	Private	Road widening	W.J.K.V. Gunathilake, 98/1, Hokanda, Porupitiya, Warella.
		94		21	0+713- 0+760	RHS	Private	Road widening	Siril Jayawardene, Waththegoda, Pelawatte, Warella.
		95		21	0+771-0+791	RHS	Private	Road widening	W.J.K.V. Samantha, Amuwa kanda, Pelawatte, Warella.
		96		21	0+713- 0+771	LHS	Private	Road widening	D. Amarasinghe, Amaragiri, Pelawatte, Warella.
		97	Porupitiya Annasigalawila	21	0+771- 0+820, 0+880- 0+905	LHS	Private	Road widening	W.J.K.V. Sirisena, Pelawatte, Porupitiya, Warella
		98		21	0+820- 0+880	LHS	Private	Road widening	R.D. Wijesinghe, Vijaya, Porupitiya , Warella.
		99		21	0+880- 0+954	LHS	Private	Road widening	W.J.K.V. Nimal, Amuwa kanda, Pelawatte, Warella.
		100		21	0+905- 0+964	RHS	Private	Road widening	W.J.K.V. Sarath, Amuwa kanda, Pelawatte,

									Warella.
		101		21	1+005- 1+025	RHS	Private	Road widening	Amarapala Wijesinghe, Karanda ketiya hena, Pelawatte, Warella.
		102		21	1+065- 1+280	RHS	Private	Road widening	T.A. Wijekon, 102/2, Pelawatte, Warella.
		103		21	1+287- 1+400	RHS	Private	Road widening	K.G. Jayaneththi, 105/1, Pelawatte, Warella.
	M2	104	Pahattukade to Nagoda Via Welihinda Junction	53	0+640	RHS	Private	Road wide is not enough	S.Rathnasekara,Deniya, Malimbada,Palatuwa
		105	Sulthanagoda-Welihinda	55	0+615	LHS	Private	Road wide is not enough	H.W.Jayantha,Asiri,Hadi nawaththa, Sulthanagoda
		106	Sultanagoda-Welihinda	55	1+090	RHS	Private	For Road widening during the road development	GD Champa, Akurugoda, Sultanagoda
		107		55	1+100	LHS	Private	For Road widening during the road development	K.P. Sunil, Welagawa Gethera, Netawwa, Akurugoda
		108		55	0+870	RHS	Private	For Road widening during the road development	N.A.Chandrana, Sandamaali, Hadidawatta, Sultanagoda
		109		55	1+020	LHS	Private	For Road widening during the road development	Kanthi Vithanagehadiwatta
		110		55	0+500	LHS	Private	For Road widening during the road development	Shriyani, Koratuwa Gethera, Delgahawatta, Sultanagoda
		111		55	0+320	RHS	Private	For Road widening during the road development	D.G. Samarathunga, Delgahawatta, Sultanagoda
		112		55	0+900	LHS	Private	For Road widening during the road	H.W.Priyanthi, Priyawasahandithawatta,

							development	Sultanagoda
	113	Sultanagoda- Welihinda	55	0+940	LHS	Private	For Road widening during the road development	Ruparaththna Hettiarachchi, Ratnasewana, Handinawatta, Sultanagoda
	114		55	0+870	LHS	Private	For Road widening during the road development	W.A.Malani, Udaya, Handinawatta, Sultanagoda
	115		55	1+010	LHS	Private	For Road widening during the road development	R.K.A. Ramya, Sasil, Handinawatta, Sultanagoda
	116		55	0+810	LHS	Private	For Road widening during the road development	P.M. Kulasena, Ilidduwa Watta, Sultanagoda
	117		55	0+750	LHS	Private	For Road widening during the road development	R.L. Piyasiri, Wasana, Godewatta, Sultanagoda
	118		55	0+960	LHS	Private	For Road widening during the road development	Jayantha Hewawitharana, Aasiri, Handinawatta, Sultanagoda
	119		55	0+810	RHS	Private	For Road widening during the road development	K.P. Jinadasa, Ilidduwa, Thoratuwa, Sultanagoda
	120		55	0+640	LHS	Private	For Road widening during the road development	G.M.C.H. Chandraqkanthi, Aru Sewana, Sultanagoda
	121		55	0+580	LHS	Private	For Road widening during the road development	C.N.K Hendahewa, Sandeepa, Godawatta, Sultanagoda
	122		55	0+540	LHS	Private	For Road widening during the road development	G.W.Sumith, Godewatta, Sultanagoda
	123		55	0+520	RHS	Private	For Road widening during the road	J.Ishan Shaanaka, Handinawatta,

								development	Sultanagoda
		124		55	0+500	RHS	Private	For Road widening during the road development	Piyaseeli Menikepiyasale, Helhawatta, Sultanagoda
		125	Sultanagoda-Welihinda	55	0+480	RHS	Private	For Road widening during the road development	G.W.Siripala, Delgahawatta, Sultanagoda
		126		55	0+460	RHS	Private	For Road widening during the road development	Piyasena Withana, Delgahawatta, Sultanagoda
		127		55	0+400	LHS	Private	For Road widening during the road development	J.Jothipala, Supun, , Delgahawatta, Sultanagoda
		128		55	0+450	RHS	Private	For Road widening during the road development	J.N. Renuka, Lakshan, Delgahawatta, Sultanagoda
		129		55	0+420	LHS	Private	For Road widening during the road development	G.W. Ariyadfasa, Diganaaddara, Sultanagoda
		130		55	0+310	LHS	Private	For Road widening during the road development	W.A. Chaminda Kumaara, Diganaaddara, Sultanagoda
		131		55	0+270	LHS	Private	For Road widening during the road development	W.H.G. Premawathee, Diganaaddara, Sultanagoda
		132		55	0+100	RHS	Private	For Road widening during the road development	Chandana Arun Kumara , Delgahawatta, Sultanagoda
Hambantota	H1	133	4 Ela/ School road	09	0+000-0+160	RHS	Private	To build the concrete drain system	D.L.A.Munasinghe, No.30, Baragama Janapadhaya, Ambalantota
		134			0+000 to			For drain	D.L.A.Munasinghe, No



				09	0+030	RHS	Private	construction	30, Beragama, Ambalanthota
		135	Godawaya roda	12	0+600 to 0+630	RHS	Private	For drain construction	H.R. Priyantha, Vihara para, Godawaya
	H2	136	Kadurupokuna-Seenimodara Road	34	0+090	RHS	Private	CL shifting (To have to avoid a steep slope at LHS)	N.C.G Punchiheva, 'Siriniwasa', Seenimodara, Nakulugamuwa.
		137	Pattipola-Marakolliya Road	33	2+760	RHS	Private	Existing ROW is not enough to provide 1m shoulder in RHS	K.P yasith No 109/2, Thuduwa Road, Thalathuduwa
		138	Dambaralla-Kanabadhiara Road	23	0+400	LHS	Private	Canter Line changed to smoothen the curves	Nilmini Renuka,Beligalla Gedara,Dambaralla.
		139		23	0+760	LHS	Private	Canter Line changed to smoothen the curves	W.A.K Piyadasa,258/4, Murugasyaya Gedarda,Dambaralla.
		140	Dambaralla-Kanabadhiara Road	23	1+630	LHS	Private	Canter Line changed to smoothen the curves	W.G Premachandra,280, Dambaralla, Kariyamadiththa.
	H3	141	Kudabibula Lindagawa Road	47	0+000-0+110	LHS	Private	For Shoulder & Earth Drain	R.Madduma Arachchi Acres 4, Kudabibula,Julampitiya
		142		47	0+110-0+200	LHS	Private	For Shoulder & Earth Drain	L.A.Chandana Lindagawaththa,Kudabibula,Julampitiya
		143		47	0+200-0+260	LHS	Private	For Shoulder & Earth Drain	R.Madduma Arachchi Acres 4, Kudabibula,Julampitiya
		144		47	0+260-0+380	LHS	Private	For Shoulder & Earth Drain	S.R.John,Murunga gedara,Julampitiya ,Meegas aara
		145		47	0+386-0+415	LHS		For Shoulder &	Somawathi Wijesinghe Thawana koratuwa, Kuda

							Private	Earth Drain	bibula,Julampitiya
		146		47	0+415-0+450	LHS	Private	For Shoulder & Earth Drain	Nadeeka Sewwandi Walapotha gedara, kudabibula,Julampitiya
		147		47	0+550-0+610	LHS	Private	For Shoulder & Earth Drain	K.G.Chithra Nishanthi 57/A/2 Kudabibula,Julampitiya
		148		47	0+610-0+690	LHS	Private	For Shoulder & Earth Drain	J.V.P.Amarasena Badigama Gedara ,Kudabibula south,Julampitiya
		149		47	0+690-0+750	LHS	Private	For Shoulder & Earth Drain	M.A.Piyadasa 4 Acres ,Kua bibula,Julampitiya
		150		47	0+750-0+847	LHS	Private	For Shoulder & Earth Drain	Nadeeka Sewwandi Walapotha gedara ,Kuda bibula, Julampitiya
		151		47	0+847-0+910	LHS	Private	For Shoulder & Earth Drain	J.Prabhath Lakmal Pallemulana koratuwa, Siyambala hendewa,Medamulana
		152	Kudabibula Lindagawa Road	47	0+000-0+110	RHS	Private	For Shoulder & Earth Drain	Ajith Rohana,No 24, Kudabibula,Julampitiya
		153		47	0+110-0+160	RHS	Private	For Shoulder & Earth Drain	Sandya Sepali, No 24,Kudabibula, Julampitiya
		154		47	0+160-0+222	RHS	Private	For Shoulder & Earth Drain	M.R.Diana Kumari No 24,Kudabibula, Diwlampitiya
		155		47	0+222-0+340	RHS	Private	For Shoulder & Earth Drain	J.V.P.Amarasena Badigama Gedara ,Kudabibula south,Julam

									pitiya
		156		47	0+340-0+507	RHS	Private	For Shoulder & Earth Drain	L.A.Anoma Priyanthi Lindagawaththa, Kudabibula, Julampitiya
		157		47	0+510-0+586	RHS	Private	For Shoulder & Earth Drain	W.Chathuranga 26/2 ,Kudabibula, Julampitiya
		158		47	0+615-0+650	RHS	Private	For Shoulder & Earth Drain	Gunapala Wijesinghe 482/3, Meegasaara, Medamulana
		159		47	0+650-0+750	RHS	Private	For Shoulder & Earth Drain	Kusumawathi wijesinghe 26/A/3, Thawanawaththa, Kudabibula south, Julampitiya
		160		47	0+750-0+825	RHS	Private	For Shoulder & Earth Drain	R.A.Ariyaratna Gallegedara, Siyambala hendewa, Medamulana
		161	Kudabibula Lindagawa Road	47	0+825-0+872	RHS	Private	For Shoulder & Earth Drain	R.A.Ariyaratna Gallegedara, Siyambala hendewa, Medamulana
		162		47	0+872-0+897	RHS	Private	For Shoulder & Earth Drain	Jeewa Malkanthi Plallemulana koratuwa, Siyambala hendewa, Medamulana
		163		47	0+900-1+010	RHS	Private	For Shoulder & Earth Drain	Ajith Weerathunga Meegahahena ,Kudabibula, Julampitiya
		164	School to Ela Bund Road	40	0+833-0+985	RHS	Private	For Shoulder & Earth Drain	J.A.Piyadasa Padmasewana, Omara, Walasmulla
		165		40	0+898-0+940	RHS	Private	For Shoulder & Earth Drain	W.K.Rupawathi, Naranwatta, Omara, Walasmulla
		166		40	0+940-0+990	RHS	Private	For Shoulder & Earth Drain	Wickramarathna Ranjith, Nelligahakoruwa,

									Omara, Walasmulla
		167		40	0+995-1+110	RHS	Private	For Shoulder & Earth Drain	A.Jayawickrama, Pahalawatta, Omara, Walasmulla
		168		40	1+110-1+262	RHS	Private	For Shoulder & Earth Drain	Somawathi Ekanayaka, Paluwatta, Omara Walasmulla
		169		40	1+262-1+408	RHS	Private	For Shoulder & Earth Drain	H.A.Andrayas Polkoratuwa ,Omara, Walasmulla
		170		40	1+840-1+925	RHS	Private	For Shoulder & Earth Drain	K.L.Ariyapala, Ukwatta, Omara, Walasmulla
		171		40	1+925-2+068	RHS	Private	For Shoulder & Earth Drain	G.K.Nikulas, Egodahawatta, Omara, Walasmulla
		172	School to Ela Bund Road	40	2+115-2+250	RHS	Private	For Shoulder & Earth Drain	L.G.P.Jayasinghe Halpandeniye gedara, Omara, Walasmulla
		173		40	2+068-2+115	RHS	Private	For Shoulder & Earth Drain	R.L.Nandasena, Katuimbulahena, Omara, Walasmulla
		174		40	0+985-1+070	LHS	Private	For Shoulder & Earth Drain	Wickramage Gnanawathi Netol Gedara ,Omara, Walasmulla
		175		40	1+070-1+155	LHS	Private	For Shoulder & Earth Drain	A.Jayawickrama, Pahalawatta, Omara, Walasmulla
		176		40	1+158-1+260	LHS	Private	For Shoulder & Earth Drain	P.Sirisena, Ruppawatta, Omara, Walasmulla
		177		40	1+260-1+320	LHS	Private	For Shoulder &	P.D.Karunawathi,

								Earth Drain	Naranwatta, Omara, Walasmulla
		178		40	1+330-1+368	LHS	Private	For Shoulder & Earth Drain	S.I.Sriyawathi Kumari Naranwatta, Omara, Walasmulla
		179	School to Ela Bund Road	40	1+368-1+383	LHS	Private	For Shoulder & Earth Drain	K.L.Pemadasa, Udawatta, Omara, Walasmulla40
		180		40	1+838-1+993	LHS	Private	For Shoulder & Earth Drain	R.L.Nandasena, Katuimbulahena, Omara, Walasmulla
		181		40	1+993-2+113	LHS	Private	For Shoulder & Earth Drain	W.S.A.Thilak Samantha 147/2, Paluwatta, Omara
		182		40	2+133-2+213	LHS	Private	For Shoulder & Earth Drain	R.L.Nandasena, Katuimbulahena, Omara, Walasmulla
		183		40	1+838-1+993	LHS	Private	For Shoulder & Earth Drain	R.L.Nandasena, Katuimbulahena, Omara, Walasmulla
		184		40	2+213-2+270	LHS	Private	For Shoulder & Earth Drain	Saman Rajapakshe, Ilukketuya thenna, Omara, walasmulla
		185		40	2+270-2+350	LHS	Private	For Shoulder & Earth Drain	W.M.Hendrik, Medawaththa, Omara, Walasmulla
		186	Warapitiya Hospital to Keradeniya Road	39	1+640-1+780	LHS	Private	For Shoulder & Earth Drain	Sirisena, 'sirisewana' Kendaketihena, Keradeniya, Kirama
		187		39	1+730-1+790	RHS	Private	For Shoulder & Earth Drain	A.D.Janaka Mahesh Senevirathna
		188		39	1+510-1+720	RHS	Private	For Shoulder & Earth Drain	H.P.Karuna ayarin, Pallaththara watta , Warapitiya
		189		39	1+510-1+640	LHS	Private	For Shoulder & Earth Drain	H.P.Karuna ayarin, Pallaththara watta , Warapitiya

		190	Warapitiya Hospital to Keradeniya Road	39	1+905-2+000	LHS	Private	For Shoulder & Earth Drain	G.Wimalasiri, Eeriyanaheha, Keradeniya
		191		39	2+000-2+100	LHS	Private	For Shoulder & Earth Drain	A.P.Piyadasa, Pinliyadda,Keradeniya
		192		39	2+100-2+160	LHS	Private	For Shoulder & Earth Drain	S.A.Siripala, Galagawa liyadda, Keradeniya
		193		39	2+130-2+160	RHS	Private	For Shoulder & Earth Drain	S.A.Siripala, Galagawa liyadda, Keradeniya
		194		39	2+245-2+340	RHS	Private	For Shoulder & Earth Drain	O.A.Jasiri, Rathna Niwasa, Keradeniya,kirama
		195		39	2+245-2+365	LHS	Private	For Shoulder & Earth Drain	O.A.Jasiri, Rathna Niwasa, Keradeniya,kirama
		196		39	2+345-2+367	LHS	Private	For Shoulder & Earth Drain	K.G.Nadeesha, Bathalawatta, Keradeniya,Kirama
		197		39	2+367-2+383	LHS	Private	For Shoulder & Earth Drain	H.W.Dharmasiri, Bathalawaththa ,Keradeniya
		198	Warapitiya Hospital to Keradeniya Road	39	2+383-2+440	LHS	Private	For Shoulder & Earth Drain	N.P.Kulathunga, Manohara , Bathawaththa ,Keradeniya
		199		39	2+245-2+450	RHS	Private	For Shoulder & Earth Drain	N.P.Kulathunga, Manohara , Bathawaththa ,Keradeniya
		200		39	2+440-2+560	LHS	Private	For Shoulder & Earth Drain	A.B.Sirisena, Bathalawaththa, North Aggithakanda,Kirama
		201		39	2+530-2+612	RHS	Private	For Shoulder & Earth Drain	W.P.Lakmal Pradeep, Bathalawaththa, North Aggithakanda,Kirama

## **6. STAKEHOLDER COORDINATION**

The project has made successful effort to involve relevant stakeholders in the project activities. In addition to the involvement of Divisional Secretaries (DSS) and Grama Niladharies (GNN) through Grievance Redress Mechanism (GRM), the project has made attempts to maintain an effective coordination with stakeholders mainly through inviting them for awareness programmes /workshops as invitees as well as resource persons.

Senior officers of police stations in the project area have been invited and participated as resource personnel at all seven (07 project) Road Safety Awareness (RSA) programmes conducted for school community in Galle, Matara and Hambantota districts.

Divisional Secretaries, Assistant Directors of Planning, Economic Development Officers, Samurdhi Sanwardhana Niladharies, Agricultural Research & Production Assistants, Grama Niladharies and Community Development Officers of PSS in the project areas have also been participated at HIV/AIDS prevention and Health programmes and RSA programmes conducted by the project, a part from the field activities.

It was evident that a better coordination among stakeholders leads to facilitate field activities efficiently.



***Picture 70. Representatives of DS office, Traffic Police Officers were among other participants at HIV /AIDS prevention and health awareness programme conducted at Beliatta,Hambantota.(H2 Contract Package)***



*Picture 71. Deputy Resident Project Manager of Mahaveli Authority assists in solving a public issue in H2, Contract Package, Hambantota*



*Picture 72. Doctors of the health department and private sector involvement in CSR programmes in Hambantota district (H2 Contract Package)*





***Picture 73. Combine effort to settle a public issue with different stakeholders at Uswewa-Binkama Road, H2, Hambantota district (Mahaweli Authority, DS office, GN, EDO, Farmer Organization, RDA, Consultant and Contractor).***

## **7. MONITORING**

Project Implementation Consultants (PIC) has closely monitored the Social Safeguard process of the project through:

- Making site visits,
- Holding review meetings,

In addition, Project Implementation Consultants (PIC) and Environment and Social Development Division (ESDD) of Road Development Authority (RDA) have made joint field visits together with the relevant staff of the Contactors to monitor the social and environment progress in each district and held progress review meetings. Field observations were mainly discussed at these meetings and arrived at collective decisions to mitigate the issues identified at the time of field visit.

In addition, CSD and Safeguards Coordination Specialist of TA8473 has made frequent visits to the sites and held review meetings and supported with providing guidance to implement the social safeguards process in high standards.

Staff of the ESDD of RDA also made frequent visits to the project sites and review the progress and guided the staff to operate the system properly.

The team of experts of ADB TA also visited the project areas during the period under review, and made an invaluable contribution to the successful implementation of social safeguards process of PIC1, Southern Province.



***Picture 74. Monitor the progress at provincial level by the Team Leader at his office, Matara.***



*Picture 75. Monitor the progress at Resident Engineers (RE)level- RE office Matara*



*Picture 76. SGRS visits to monitor the social safeguard process in the field (M1,Contract Package)*

### Visits made by Environment and Social Development Division (ESDD)



*Picture 77. ESDD team visits to Galle (G1- Contract Package)*



*Picture 78. Hydrologist of ESDD, RDA lightning the traditional oil lamp at Mission meeting held at TL office.*



**Picture 79. CSD and Safeguards Coordination Specialist of TA8473 visits Galle (G2, Contract Package)**



**Picture 80. CSD and Safeguards Coordination Specialist of TA8473 visits Matara (M3, Contract Package)**



**Picture 81. CSD & Safeguards Coordination Specialist of TA8473 discusses with beneficiaries – (M2, Contract Package)**



**Picture 82. CSD & Safeguards Coordination Specialist of TA8473 visits Galle (G2, Contract Package)**



*Picture 83. CSD & Safeguards Coordination Specialist of TA8473 discusses the progress at ARE's office Hambantota*

### Visit of ADB TA team in June, 2016 to Southern Province



*Picture 84. PD makes welcome speech at the Mission meeting held at the TL's office.*



*Picture 85. Mission on field visit in Galle (G2 Contract Package)*



*Picture 86. Mission on field visit in Galle (G2 Contract Package)*



## **8. CONCLUSION AND RECOMMENDATIONS**

### **8.1 Conclusion**

As per section 10 of Resettlement Framework (RF) on “Monitoring and reporting”, this semi-annual Social Monitoring Report for the period from July to December, 2016 has been compiled. The report consists of the status of compliance with the Social Safeguard requirements of Resettlement Framework (RF), Loan Conditions (social safeguards) and Facility Administration Manual (FAM).

Under the Social Safeguard issues and mitigation measures, it discusses the gender involvement in project activities, integrating EWCD friendly design, practical application of Grievance Redress Mechanism (GRM), establishment of Grievance Redress Committees (GRCs), addressing public grievances, implementation of HIV/AIDS prevention and Health awareness programmes- (step 2), Road Safety Awareness programmes, Cooperate Social Responsibility (CSR) Programmes and land donation process. Further, stakeholder co-ordination and monitoring process of social safety process have also been discussed in the report.

In compliance with the loan conditions (Social Safeguards) and the Resettlement Framework (RF); recruitment of individual consultants for activities laid down in the Procurement Plan has been completed. In relation to employment, Contractors were instructed and encouraged to follow the conditions laid down in the Schedule 5 – labour standards in the Loan Conditions.

Gender Action Plan (GAP) has been formulated for gender mainstreaming activities to ensure that at least 40% women are consulted in the final design of rural access roads, employing at least 30% local women for road maintenance and ensure equal wages for equal work of men and women. To ensure gender equality in project activities, Gender Action Plan (GAP) has been implemented mainstreaming activities for providing training programmes in routine road maintenance to all employed women and to encourage women’s participation in road safety and STI & human trafficking awareness campaigns. Women involvement is encouraged and monitored in the project activities and the female labour contribution for the construction work, office work, for CSR activities and other workshops conducted by the project during the period under review such as HIV/AIDS prevention and Health programmes (female participation was 24%.) and Road Safety Awareness programmes (female participation was 51%.), CSR programmes (female participation was 50.8%) were at acceptable level. The Contractors were instructed and encouraged to employ, poor women in particular and discouraged utilization of child labour as per guidance of Loan Conditions. None of the Contractors were assigned child labour for the project activities. All the gender related issues are effectively addressed and complied by the project implementation Consultants PIC including a Social, Gender and Resettlement expert with their monitoring support.

As per Gender Action Plan (GAP) under the section VIII Gender and Social Dimensions of Facility Administration Manual (FAM), Elderly- Women- Child- Disabled (EWCD) friendly design has been introduced where requested. It was possible to identify the needs of vulnerable groups through building up of close relationship with communities in the project area and to serve them.

The report also describes the concept of Context Sensitive Design (CSD) and establishment of Grievance Redress Mechanism (GRM) under CSD as one of the effective strategies to address social safeguard issues confronting the project. The significance of GRM is that the project could get the fullest cooperation of state authorities as well as other stakeholders in addressing social issues through formation of Grievance Redress Committees (GRCs) at Grama Niladhri Division (GND) level and Divisional Secretary Division (DSD) level. It was also observed that the functioning of GRCs led to develop confidence in the minds of people on project activities and create a trusted way to voice and resolve the issues of the affected persons. At the end of the period under review, the project was able to establish 45 GRCs at DSD level out of 45 DSD areas and 228 GRCs at GND level out of 228 GNDs.

Thereby, formation of GRCs at GND level as well as DSD level were already completed and they are now in operation effectively.

The report also discusses on Public Complaints (in this context Complaints denotes; complaints, grievances, requests, suggestions and complaints) received through the channels introduced by the project and the way those were classified and addressed effectively depending on the nature and significance of the issue as per the GRM. During the period under review, a total of 1076 Public Complaints have been received in three districts out of which 624 Complaints have been completely settled to the satisfaction of complainers and 452 are being in the process of settling.

As per the Contract Document Volume 3 S.Cl.108.3 and Volume 5A BOQ pay item 108.3 (1) the contractors have conducted HIV/AIDS prevention and Health programmes for Contractor's staff, workers and immediate local communities via an approved service provider, in accordance with the S.Cl.6.7 of Conditions of Contract. The Contractors were assisted by the Project Implementation Consultants (PIC) to select the service provider to conduct the programmes with the intention of implementing more efficient and effective programmes. During the period under review, the project was able to complete three (03) programmes under step 2, HIV/AIDS prevention and Health awareness programmes for immediate local communities covering three (03) Contract Packages in participation with 306 beneficiaries comprising of 62 females and 244 males. HIV/AIDS affects everyone, regardless of race, age, or religion; hence, information and knowledge must be accessible to everyone. One of the culturally sensitive area of HIV/AIDS awareness training was offered with the combination of culturally diverse group in the local community through the project. The facilitators were specially trained on their role and sharing the knowledge and experiences. To assess the changes in attitude, knowledge, and beliefs regarding HIV/AIDS, the questionnaire was administered before and after the training programs. The programme had a positive effect on participants' attitude and knowledge regarding HIV/AIDS; even the women participants felt comfortable in discussing their concerns.

The report discusses the implementation of Road Safety Awareness (RSA) programmes for school community (selected Teachers, Children, and Parents). RSA programmes have been scheduled in selected nine schools in all Contract Packages of Galle, Matara and Hambantota districts in Southern Province as per Appendix 3 of the Resettlement Framework (RF). The target group of the RSA school programmes were the school children in Grade 9, 10 and 11, their parents and school teachers. Out of nine programmes, seven (07) programmes have already been conducted during the month of June 2016. The details were reported in the previous report. During the period under review, two RSA programmes have been conducted in participation with 374 beneficiaries comprising of 191 females and 183 males.

In addition to the civil construction, the Contractors have also conducted Cooperate Social Responsibility (CSR) programmes specially targeting at vulnerable groups in the project area. The total number of beneficiaries were 1728 in which 878 were female and 850 were male.

As per the Resettlement Framework (RF) for the Integrated Road Investment Programme (iRoad) “for the rural roads improvements will be undertaken completely within the existing Right of Way (ROW) which is between 2.5m to 5.5m”. Therefore, voluntary land donation will be utilized, if additional strip of private land is required. Land donation process is being implemented and signed five (05) individual Memorandums of Understanding (MOUs), one (01) common MOU with private land owners in accordance with the guidelines outlined in the RF. In addition, in addition, two hundred and one (201) consent letters have been obtained from land owners for the donated land which is less than one-meter width. In the process of land donation, a noticeable challenge faced is that the negative attitudes of people towards donating a property for public utilities in which they are not individually benefited. However, it was also experienced that if people are properly and honestly consulted/educated through a comprehensive mobilization/ awareness process, they would motivate to donate their properties even for public services.

During the period under review, PIC1(SP) was able establish strong coordination among stakeholders such as Divisional Secretaries, Assistant Directors of Planning, health staff, department of education, school principals in particular, police department, department of agrarian Services, Provincial Road Development Authority (PRDA), Mahaweli Authority, Local Government Department, Pradeshiya Sabhas, Non-Government Organizations (NGOs) etc.in the Southern Province.

P IC 1 (SP) has given a special attention on monitor the social safeguard process of the project. In addition to the frequent site visits, held substantial number of review meetings to monitor the progress at TL, RE, ARE levels and to identify the strengths and weaknesses of the process and taken remedial actions by the PIC1 (SP).

In addition, CSD & Safeguards coordination Specialist of TA8473 (ADB) have made frequent visits to the sites and held review meetings and supported with providing guidance to implement the social safeguards process in high standards.

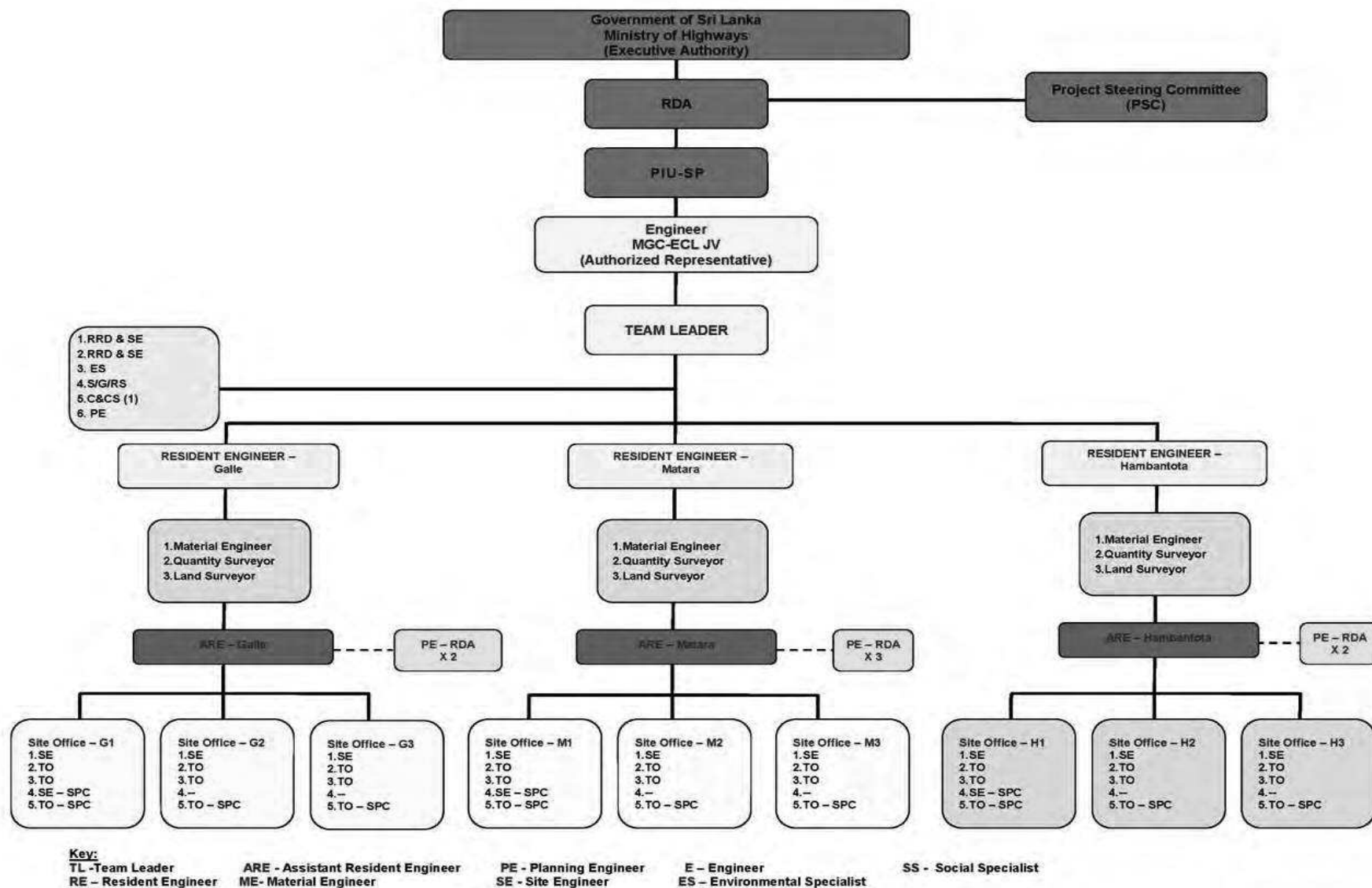
Staff of the ESDD of RDA also made frequent visits to the project sites and review the progress and guided the staff to operate the system properly.

The team of experts of ADB TA has also visited the project areas during the period under review, and made invaluable contribution to the successful implementation of social safeguards process of PIC1, Southern Province.

## 8.2 Recommendations

- Through the experience gained during the period under review, it was observed, if field officers qualified in social science could have been assigned at Contract Package level to address social issues and to implement mitigation measures that would have been more beneficial to the communities and to achieve the project targets more effectively in respect of social safeguard component. Hence, it is recommended to assign field social officers in upcoming similar future projects.
- Since the iRoad PIC1 (SP) is implemented in the nature of a pilot project, it is recommended to draw more attention on proper documentation of lessons learnt in the field, preferably in the form of Case Studies.
- It is also suggested to make adequate financial provision in the upcoming projects to implement gender related special programmes for the achievement of better results as per the GAP.

## Overall Organization Chart for PIC



A sample of Data Base (G1)-Land donation

Package No:  
District:

G1  
Galle

File Serial No.	Road Information [Section 1]							Location Details [Section 2]						Present Occupant's Details [Section 3]				Reason for additional land requirement (Section 4)	Progress of land donation [Section 5]						Remarks [Section 6]			
	Name of Road	ID of Road	Road Category			Administrative details			Chainage		GPS log			Ownership		Name	Address		Date of initial discussion	View of occupant	Type of agreement			Date Signing of agreement	Photo documentation reference No.	Special requests of occupant	Comment of PE/ SSO	
			PS	PRDA	RDA	Name of PS	Name of DSD	Name and No. of GND	From	To	Side (LHS/ RHS)	Northing	Easting	Average width of strip (m)	Clear Title						Title NOT Clear	Consent letter						MOU
LD/SP/G1/DD01/06							Mavita- East	0+320	0+380	LHS					E. G. Wimalasena	Mavita, Neluwa	Road is narrow with a bend	Positive	yes			Figure 01 (Before) Figure 02 (After)						
LD/SP/G1/DD01/04							Mavita- East	1+440	1+505	RHS			1.1	Yes	D. I. Dayarathne	Udaovita, Mavita East, Neluwa	Road is very narrow both side of the road is paddy field located.	Positive		Individual	07.01.2015	Figure 03 (Before) Figure 04 (After)						
LD/SP/G1/DD01/01	Mavita-Ooolalla	1	Yes		Neluwa	Neluwa	Batuwangala-West	1+718	1+745	LHS			1.1		Yes	D. W. Piyasena	Batuwangala West, Neluwa	Road is very narrow. At RHS small irrigation canal & paddy field at RHS with a bend.	Positive		Individual	06.11.2015	Figure 07 (Before) Figure 08 (After)					
LD/SP/G1/DD01/02							Batuwangala-West	1+938	1+955	LHS			1	Yes		E. N. Thepanis	Batuwangala West, Neluwa	Road is very narrow. At RHS small irrigation canal & paddy field at RHS with a bend.	Positive		Individual	12.11.2015	Figure 09 (Before) Figure 10 (After)					
LD/SP/G1/DD01/03							Batuwangala-West	2+115	2+220	LHS			1.1	Yes		J. S. Ariyapala	Batuwangala West, Neluwa	Road is very narrow. At RHS small irrigation canal & paddy field at RHS with a bend.	Positive		Individual	12.11.2015	Figure 11 (Before) Figure 12 (After)					
LD/SP/G1/DD01/05							Mavita- East	1+440	1+505	LHS			1	Yes		N. H. Nandasena	Udaovita, Mavita East, Neluwa	Road is very narrow. Either side of the road paddy field located	Positive		Individual	02.02.2016						
LD/SP/G1/DD04/01	Danawala-Mavita	4	Yes			Neluwa	Neluwa	Mavita- East	0+250	0+277	RHS			1.1	Yes	M. G. Ramesh	Krishantha, Mavita East, Neluwa	At LHS house and large stone. At RHS deep edge	Positive		Individual	15.10.2015	Figure 13 (Before) Figure 14 (After)					

**An example (G2) influence of road improvements to the residents**



**How road improvement influences the residents**

***Sample: Edirisinghe mawatha(Rd. ID 23) G2 Contract Package, Galle District, Southern Province***

Improvement of Edirisinghe Mawatha (Road) (ID23) of G2 Contract Package in Galle district commenced on 16<sup>th</sup> July 2015 and completed on 10<sup>th</sup> November, 2016. From the inception of project activities, residents of the road were remarkably cooperative with the construction team and supported in numerous ways.

A notable feedback of the residents is that while road is being improved, the most of the residents were motivated to colour wash their existing walls, facing to the road or repairing the old walls or construct new walls and gates while some of the residents wanted to give a new outlook to their residences to match with the attractiveness of the improved roads. They are of the opinion that as a result of having such an impressive road their land value has been raised and the location has become an eye-catching residential area.



***Entrance of Edirisinghe mawatha***

Before



After



*Chainage 0+040 LHS*



*Chainage 0+150*



*Chainage 0+250*

**Before**



**After**



***Chainage 0+350***



***Chainage 0+400***



***Chainage 0+450***

Before



After



*Chainage 0+500*



*Chainage 0+520*



*Chainage 0+600*

**A sample - CSR programme conducted in Hambantota – H2**

Integrated Road  
Investment Programme  
(iRoad)-Southern Province



# MEDICAL CAMP & EYE CLINIC



Coperate Social responsibility(CSR) Programme-  
Hambantota (H2) 11.08.2016



CML-MTD CONSTRUCTION LTD.

## **Introduction**

Currently we have engaged in the improvements and rehabilitation of rural roads in Hambanthota area, with the funds from Asian Development Bank. In this project our team has exposed in to the considerable community, whilst covering 60 km lengthy rural roads, 45 Grama Niladari divisions and Four (4) Divisional Secretariat divisions. Therefore, more than three thousands of people are benefited from the ongoing project.

As we are continuing the project more than thirteen months, one of the major social issues have identified was the lack of the medical facilities for the villagers. For some have to travel much more distance to take a single tablet whilst paying lot. Many are suffering from the lack of money for getting treatments as well as they are earning a marginal income for their daily life.

As a construction group we believe development is not just creating the world in new look, it is which increasing the communities life style in good level. We, CML-MTD Construction ltd annually organized several events to answer the above matter in the best of way we can. There we have joined with the HelpAge crew and have organized several events of medical camps and the eye clinics for more than five years.

As we are having four clusters at this rural implementing project, the Corporative Social Responsibility projects are organized covering all these four clusters. Very first, we have conducted a HIV-AIDS prevention programme and the medical camp, then the similar Medical camp and Eye clinic at Agunakolapalassa, Dental camp at Beliaththa and then once again HIV-AIDS prevention programme and the medical camp at Beliaththa. This was the fifth CSR project done during this construction project.

This is something where we touch the heart of the community. We just not handover them a novel road, or any new construction we will make a remark on their hearts. We will engage with their life, we will corporately work with them and will place a good name in the deep of their hearts. With the new road, new construction their owning they will also step in to the light of the developing life condition. We believe it is the Social Responsibility of us all.

## Objectives

1. Enhance the life condition of the community
  - i. Giving them a proper medical treatments in free
  - ii. Donating the spectacles to the people whom it need
2. Engaged with the community in their Social activities.



## Day Programme

Medical Camp and the Eye Clinic was held at the Sri Ashokaramaya, Kadurupokuna- West on 11.08.2016. Pre-announcement was done at the Kadurupokuna and Seenimodara villages and also displayed several notices to make aware of the public about the activity.

Around 7.00 a.m., started registering the people and almost 50 of people were gathered at the school premises at the time. Medical camp was started around 8.30 a.m. and 7 members from the HelpAge crew actively conducted the programme on behalf of the CML-MTD construction ltd. Doctor, two oculists, a medical officer and a pharmacist were present.

Project Manager Eng. Malaka Weerakoon addressed the gathering at the beginning and he has explained the contribution of the CML-MTD constructions ltd for these types of community activities. Also he has well explained the reason for arranging this kind of camp. The combination of the CML-MTD Construction ltd, iRoad project and HelpAge group were also highlighted during his speech.

Mr. Jayantha, the event coordinator, behalf of the HelpAge crew also addressed the people and he has shortly explained the objectives and content of the programme. Also he has mentioned the contribution of the CML-MTD construction ltd was remarkable and have to appreciate well.

Around 150 people were participating at the eye clinic and 102 people were selected to donate the spectacles. 87 people were consulted at the Medical Camp and all the relevant medicinal drugs were provided. Refreshments were provided for all.

Around 1.00 p.m. the programme was concluded and the feedback received from the villagers was highly blissful. Support from the Grama Niladari and the Social Police Service was highlighted during the event. Many more greeting received for the company and the social service police officers state that the CML-MTD Construction ltd is to be the most appreciated company.

## Day Captures....





