



Social Monitoring Report

1st Semestral Report
Project Number: 46078-013
August 2016

PRC: Yunnan Pu'er Regional Integrated Road Network Development Project-Ning'jiang Road Subproject

Prepared by Hohai University for the Yunnan Pu'er Municipal Government and the Asian Development Bank

This social monitoring report is a document of the borrower. The views expressed herein do not necessarily represent those of ADB's Board of Director, Management or staff, and may be preliminary in nature.

In preparing any country program or strategy, financing any project, or by making any designation of or reference to a particular territory or geographic area in this document, the Asian Development Bank does not intend to make any judgments as to the legal or other status of any territory or area.

Asian Development Bank

ADB-financed Yunnan Pu'er Regional
Integrated Road Network Development Project

**Yunnan Pu'er Regional Integrated Road Network Development
Project——
Ning'jiang Highway Subproject**

**External Resettlement Monitoring and Evaluation
Report
(No.1)**

Hohai University

August 2016

Contents

1	SUMMARY	1
1.1	INTRODUCTION TO THE PROJECT	1
1.2	THE SUBPROJECT AND RESETTLEMENT IMPACTS	2
1.2.1	<i>The Subproject</i>	2
1.2.2	<i>Resettlement Impacts</i>	3
1.3	EXTERNAL RESETTLEMENT M&E	3
1.3.1	<i>Basis</i>	3
1.3.2	<i>Scope</i>	3
1.3.3	<i>Procedure</i>	3
1.3.4	<i>Methods</i>	4
1.3.5	<i>Scope of this Report</i>	4
2	ORGANIZATIONAL STRUCTURE	5
2.1	AGENCIES	5
2.2	STAFFING AND EQUIPMENT	6
2.3	EVALUATION	7
3	M&E OF RESETTLEMENT IMPLEMENTATION	8
3.1	CONSTRUCTION PROGRESS	8
3.2	LAND APPROVAL	9
3.3	RESETTLEMENT IMPLEMENTATION	9
3.3.1	<i>Acquisition of Collective Land</i>	9
3.3.2	<i>HD</i>	9
3.3.3	<i>Temporary Land Occupation</i>	9
3.4	RESETTLEMENT POLICIES AND COMPENSATION RATES	9
3.4.1	<i>Policies and Compensation Rates of Ning'er County</i>	10
3.4.2	<i>Policies and Compensation Rates of Jiangcheng County</i>	11
3.5	FUNDS AND DISBURSEMENT	11
3.5.1	<i>Disbursement Progress</i>	11
3.5.2	<i>Disbursement Process</i>	11
3.6	EVALUATION	12
4	PUBLIC PARTICIPATION AND GRIEVANCE REDRESS	13
4.1	PUBLIC PARTICIPATION	13
4.1.1	<i>Preparation Stage</i>	13
4.1.2	<i>Implementation Stage</i>	13
4.2	GRIEVANCE REDRESS	15
4.3	EVALUATION	15
5	FINDINGS AND SUGGESTIONS	43
5.1	KEY FINDINGS	43
5.2	SUGGESTIONS	43
	APPENDIXES	45
	APPENDIX 1 M&E METHODS (NO.1)	45
	APPENDIX 2 FGD AND INTERVIEW MINUTES (NO.1)	46

APPENDIX 3 PRELIMINARY LAND EXAMINATION OPINION FOR THE NING’ER-JIANGCHENG-NO.3 CHINA-VIETNAM BOUNDARY MARKER HIGHWAY	47
APPENDIX 4 ANNOUNCEMENT OF THE NING’ER COUNTY GOVERNMENT ON LA FOR THE NING’ER–JIANGCHENG–LONGFU HIGHWAY (NING’ER SEGMENT) AND NOTICE ON COMPENSATION RATES FOR TEMPORARY LAND USE	48
APPENDIX 7 FIELDWORK PHOTOS	44

List of Tables

TABLE 1-1 BASIC INFORMATION OF THE PROJECT	1
TABLE 1-3 SUMMARY OF RESETTLEMENT IMPACTS OF THE PROJECT	3
TABLE 2-1 STAFFING OF KEY RESETTLEMENT AGENCIES.....	6
TABLE 3-1 IMPLEMENTATION OF CONTRACT PACKAGES OF THE SUBPROJECT	8
TABLE 3-2 LA COMPENSATION RATES OF THE SUBPROJECT	10
TABLE 3-3 COMPENSATION RATES FOR BUILDINGS AND STRUCTURES.....	10
TABLE 3-4 COMPENSATION RATES FOR GROUND ATTACHMENTS.....	11
TABLE 4-1 IMPLEMENTATION PROGRESS OF PUBLIC PARTICIPATION	14
TABLE 4-2 PUBLIC PARTICIPATION ACTIVITIES DURING EXTERNAL M&E.....	14

List of Figures

FIGURE 1-1 ROUTE MAP OF THE SUBPROJECT	2
FIGURE 2-1 ORGANIZATIONAL CHART.....	6
FIGURE 2-2 PHOTOS OF PU’ER PMO TRAINING IN APRIL 2016	7
FIGURE 3-1 FUND DISBURSEMENT FLOWCHART	12
FIGURE 4-1 RIB DISTRIBUTION IN JIANGCHENG COUNTY.....	13
FIGURE 4-2 LA NOTICE, AND LA AND HD PROGRAM OF NING’ER COUNTY.....	14

ABBREVIATIONS

ADB	-	Asian Development Bank
AH	-	Affected Household
AP	-	Affected Person
DMS	-	Detailed Measurement Survey
FGD	-	Focus Group Discussion
HD	-	House Demolition
LA	-	Land Acquisition
M&E	-	Monitoring and evaluation
PMG	-	Pu'er Municipal Government
PMO	-	Project Management Office
PMTB	-	Pu'er Municipal Transport Bureau
PTIG	-	Pu'er Transport Investment (Group) Co., Ltd.
RIB	-	Resettlement Information Booklet
RP	-	Resettlement Plan

Units

Currency unit	=	Yuan (CNY)
1.00 yuan	=	\$0.15
1 hectare	=	15 mu

1 Summary

1.1 Introduction to the Project

Located in southwestern Yunnan Province, Pu'er City has a land area of 45,000 km², being the largest prefecture/city in Yunnan, and governs 9 counties, one district and 103 townships, with a population of 2.546 million, in which minority population accounts for 61%. Pu'er is the only prefecture/city of China bordered by Vietnam, Laos and Myanmar, with a border line of 486 kilometers, enjoying superior traffic and geographic advantages.

In order to promote the city's economic and social development, the Pu'er Municipal Government (PMG) plans to upgrade and reconstruct the existing transport infrastructure, and has thereby proposed the Yunnan Pu'er Regional Integrated Road Network Development Project (the "Project").

The Project aims to improve regional cooperation and trade development in Pu'er City, and traffic conditions in rural and frontier areas of Pu'er City. The Project has three outputs: 1) Regional Roads Development; 2) Rural Access Improvement; and 3) Institutional Development.

- **Output 1: Regional Roads Development:** This comprises (i) upgrading and new construction of 228 km of class III/IV/III highway between Ning'er–Jiangcheng–Longfu; (ii) upgrading and new construction of the 48.75 km Menglian to Meng'a section of the Lancang–Menglian–Meng'a class III/IV border road mainly to class II standard; (iii) development of trade facilities at the Meng'a Material Transit Centre (MTC); and (iv) improving the safety of these roads by introducing safety measures determined by the ChinaRAP road safety design decision-making tool.
- **Output 2: Rural Access Improvement:** This will provide all-weather access to administrative villages and links with higher level roads. It comprises (i) upgrading to class IV standard of 600 km of village earthen or gravel roads selected in accordance with the rural road assessment criteria, (ii) spot improvements on up to 1,200 km of connecting lower level village roads, (iii) introduction of five new village bus service routes on a pilot basis, and (iv) a gender focused rural road maintenance program.
- **Output 3: Institutional Development:** This will address the limited implementation capacity of PMG. A project management consultant will assist the PMG to implement and monitor the project in accordance with ADB procedures. The project will finance a 3-year program of international and domestic training in financial and project management, road maintenance engineering, road maintenance practices, road safety, environmental management, social safeguards management, and human, drugs and wildlife trafficking enforcement.

ADB approved the ordinary fund loan of \$200 million on December 8, 2014, and signed the loan agreement on June 25, 2015. The loan took effect on October 20, 2015, and the closing date is June 30, 2021.

Table 1-1 Basic Information of the Project

1	Country	People's Republic of China (PRC)
2	Loan No.	LOAN 3217-PRC
3	Project	Yunnan Pu'er Regional Integrated Road Network Development Project
4	Effective date of loan	October 20, 2015
5	Closing date of loan	June 30, 2021
6	Borrower	Ministry of Finance of the PRC
7	Executing agency	PMG
8	Implementing agency	PMTB
9	Loan amount	\$200 million
10	Last ADB mission	November 30-December 7, 2015

1.2 The Subproject and Resettlement Impacts

1.2.1 The Subproject

The Ning'er–Jiangcheng–Longfu Highway is a subproject of the Project (hereinafter, the “Subproject”).

The Ning'er–Jiangcheng–Longfu Highway begins with K3+800 north of Ning'er Town, and ends with the No.3 China-Vietnam Boundary Marker, with a full length of 228.078km. The segment from the starting point to Laozhaozhai (25.136km) has a design driving speed of 40kph and a roadbed width of 8.5m, and the segment from Laozhaozhai to the endpoint (202.942km) has a design driving speed of 30kph and a roadbed width of 7.5m (where the KM231+706.30~KM234+069.52 segment has a roadbed width of 12 m).

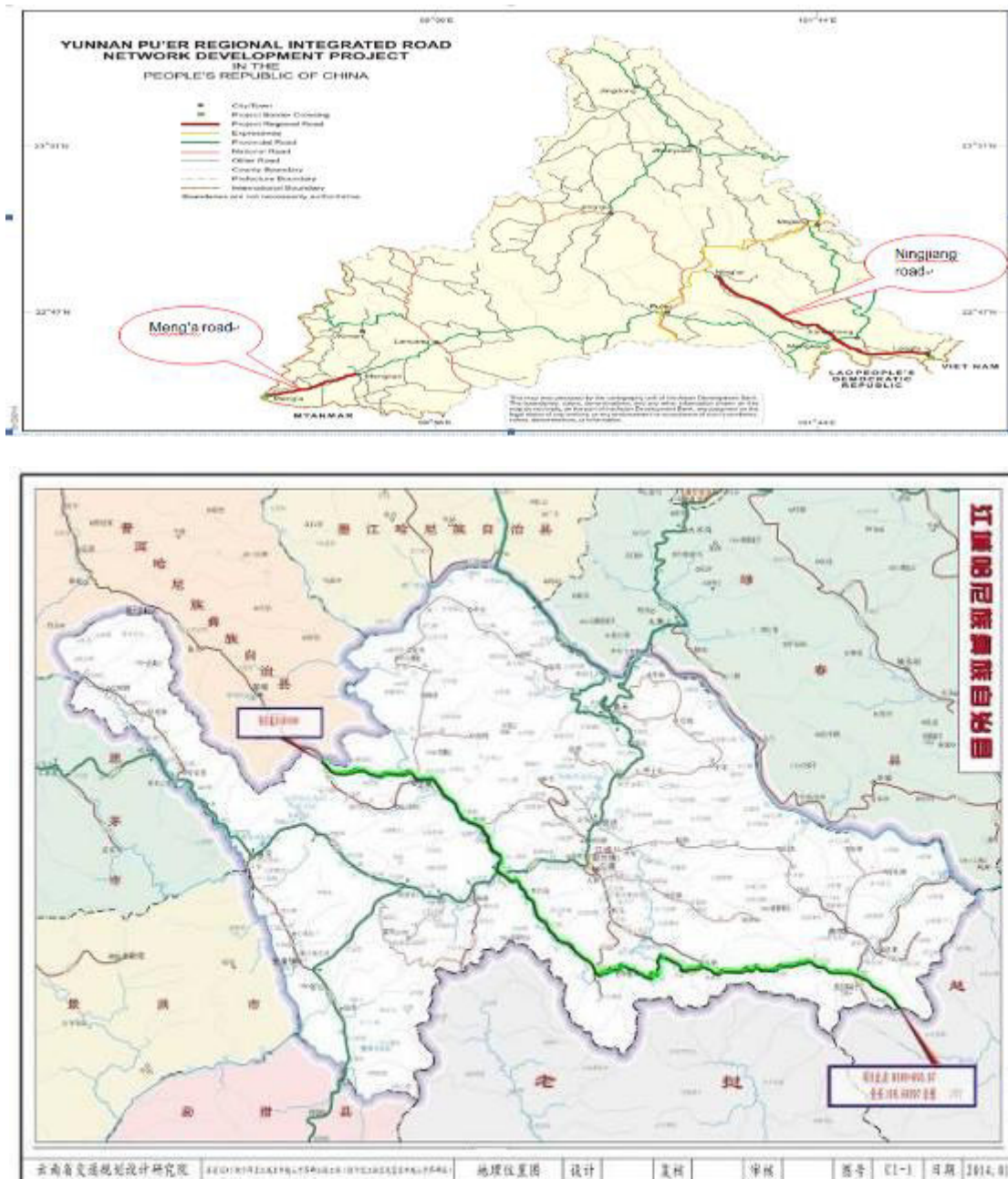


Figure 1-1 Route Map of the Subproject

1.2.2 Resettlement Impacts

According to the RP approved by ADB in October 2015, 23 villages in 6 townships in Ning'er and Jiangcheng Counties, Pu'er City will be affected by LA and HD for the Subproject, in which 17 villages are affected by both LA and HD, and 6 affected by LA only.

2,245.554 mu of rural collective land will be acquired permanently, 970.808 mu of state-owned land occupied and 150 mu of land occupied temporarily.

Residential houses of 25,069.38 m² will be demolished, all being rural residential houses, affecting 315 households with 1,178 persons, including 15,245.02 m² in masonry concrete structure (60.81%), 6,923.02m² in masonry timber structure (27.62%) and 2,901.34m² in simple structure (11.57%).

In sum, 1,620 households with 8,729 persons will be affected by LA and HD for the Subproject, in which 1,305 households with 7,551 persons will be affected by LA only, 79 households with 301 persons by HD only, and 236 households with 877 persons by both LA and HD. See Table 1-3.

Table 1-2 Summary of Resettlement Impacts of the Project

Item	Unit	Subtotal
Collective land acquisition	mu	2245.554
State-owned land occupation	mu	970.808
Temporary land occupation	mu	150
Demolition of rural residential houses	m ²	25069.38
Demolition of urban residential houses	m ²	0.00
Affected population	HH	1620
	Person	8729
—LA only	HH	1305
	Person	7551
—HD only	HH	79
	Person	301
—Both LA and HD	HH	236
	Person	877

1.3 External Resettlement M&E

1.3.1 Basis

The basis for M&E of the Subproject includes:

- Applicable state laws and regulations
- ADB's Safeguard Policy Statement (June 2009)
- RP approved by ADB (October 2015)
- M&E contract
- Terms of reference for resettlement M&E
- Other documents related to the Subproject

1.3.2 Scope

This report is the No.1 external M&E report of the Subproject, and aims to sum up the resettlement work of the Subproject as of June 30, 2016, find out issues in resettlement and propose solutions accordingly. This report covers: 1) LA and resettlement implementation; 2) temporary land occupation; 3) production development; 4) HD and house reconstruction; 5) resettlement measures; 6) fund disbursement, use and management; 7) establishment and operation of resettlement agencies; 8) information disclosure and grievance redress; 9) production level and living standard of APs; and 10) income variation, etc.

1.3.3 Procedure

- Preparing the terms of reference for resettlement M&E
- Sampling plan design
- Baseline survey

- Establishing an M&E information system
- Follow-up survey
- Data compilation and analysis
- Preparing a M&E report

1.3.4 Methods

1) Monitoring methods

Literature study: Documents, agreements, statistical reports, etc. on LA, HD and resettlement were referred to and verified.

Questionnaire survey and door-to-door interview: A sampling plan and a questionnaire were designed. 135 AHs in 12 affected villages, 6 townships, two counties were sampled randomly, accounting for 8.33% of all AHs. The survey covered population, income and expenditure, etc. These sample households will be followed up in the next round of M&E until their income is restored.

FGD: FGDs were held with the LA and HD agencies, township governments, village committees and AHs to learn information on LA, HD and resettlement. 21 FGDs were held, with 190 participants in total, including 75 women, accounting for 39.47%.

Key informant interview: 8 interviews were conducted with heads of the LA and HD IAs, village heads, heads of AHs, women and old people to learn construction and investment progress, public participation, potential issues and suggestions, local socioeconomic profile, etc.

Field investigation: A field investigation was conducted to learn the progress and effectiveness of resettlement, and identify existing or potential issues.

2) Evaluation methods

Statistical analysis: A comprehensive statistical analysis was performed on resettlement implementation, including resettlement progress, resettlement planning and completion, fund availability, etc.

Comparative analysis: A comparative analysis was performed on the resettlement effect, including horizontal and vertical comparison of production level and living standard.

Participatory evaluation: The APs and local residents evaluated the resettlement effect, and gave opinions and advice by means of FGD, questionnaire survey, etc.

1.3.5 Scope of this Report

1) Scope of M&E

This round of M&E covered the resettlement implementation of the Subproject in Ning'er Town, Liming Xiang, Mengxian Town, Baozang Xiang, Menglie Town and Qushui Town. In addition, a baseline survey was conducted on the affected villages and households (living, production and income levels), and a baseline database was established as a basis for subsequent resettlement M&E.

2) Time limit of M&E

The time limit of this round of M&E for resettlement implementation is June 30, 2016, and that for the socioeconomic survey December 31, 2015.

2 Organizational Structure

2.1 Agencies

To ensure successful resettlement as desired, a systematic organizational structure must be established during project implementation in order to plan, coordinate and monitor resettlement activities.

PMG is the executing agency of the Project, responsible for overall project implementation, and PMTB is the implementing agency, responsible for the fulfillment of the outputs and routine project implementation. The Pu'er PMO has been established at PMTB for project coordination and management.

In January 2016, PTIG established the Ning'er–Jiangcheng–Longfu Highway Construction Headquarters as instructed by PMG, responsible for the construction, quality, progress and safety management of the Ning'er–Jiangcheng–Longfu Highway, and the coordination of LA, HD and preparation with the Ning'er and Jiangcheng County Governments.

In June 2016, the Ning'er County LA and HD Management Office was established, responsible for implementing impact registration, compensation calculation and payment, resettlement, etc. for the Subproject. Accordingly, township LA and HD management offices have also been established.

In June 2016, the Ning'er County Subproject Leading Group was established.

However, no LA and HD management office has been established in Jiangcheng County, but preparation has begun.

The agencies responsible for resettlement under the Subproject are as follows:

- Project Leading Group
- PMTB
- Pu'er PMO
- Ningjiang Highway Construction Headquarters
- County subproject leading groups
- County PMOs
- County LA and HD management offices
- Township governments
- Village committees
- Design agency
- External M&E agency

See Figure 2-1.

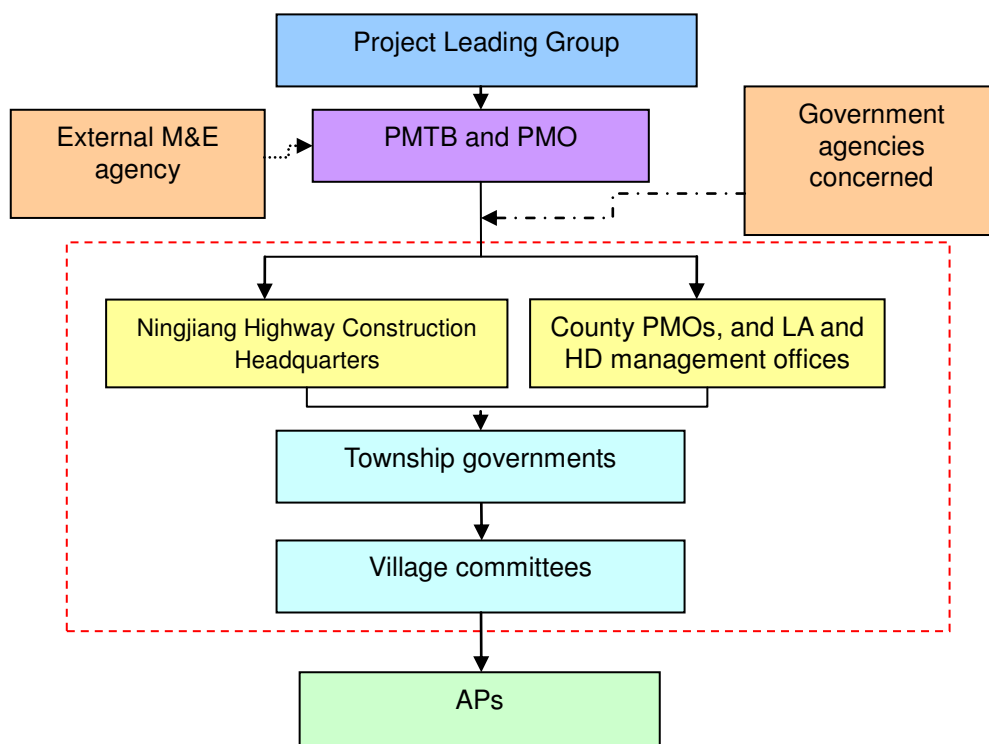


Figure 2-1 Organizational Chart

2.2 Staffing and Equipment

In order to facilitate resettlement, the resettlement agencies at different levels have been sufficiently staffed and created unobstructed information flows. These agencies are composed of administrative staff and technicians, with workforces of 3-33. All staff members have certain professional and administrative competencies, and experience in resettlement. See Table 2-1.

Table 2-1 Staffing of Key Resettlement Agencies

Agency	Workforce		Staffing	Remarks
	Male	Female		
Project Leading Group	3	2	Civil servants	
Pu'er PMO	2	2	Civil servants, technicians	
Ningjiang Highway Construction Headquarters	33		Civil servants, technicians	
Ning'er PMO	2	1	Civil servants, technicians	
Jiangcheng PMO	2	1	Civil servants	Not established
Ning'er LA and HD Management Office	2	2	Civil servants	
Jiangcheng LA and HD Management Office	2	2	Civil servants	Not established
Township governments	2	2	Civil servants	
Village committees	6	6	Village officials, AP representatives	
Design agency	2	1	Engineers	
External M&E agency	4-8		Resettlement and social experts	

In addition, the resettlement agencies at different levels have fixed offices, sufficient funds, and basic office, transport and communication equipment, including desks and chairs, PCs, printers, telephones, facsimile machines and vehicles. The powerful organizational structure ensures the

successful implementation of LA and HD.

In order to strengthen the understanding of ADB's resettlement policy among the staff of the resettlement agencies, the Pu'er PMO invited ADB resettlement officials to offer relevant training in April 2016, covering domestic resettlement and social policies, resettlement planning, implementation, management and monitoring, etc.



Figure 2-2 Photos of Pu'er PMO Training in April 2016

2.3 Evaluation

The task force investigated the operation of the resettlement agencies. The investigation shows that relevant agencies have been established and staffed at the municipal level and in Ning'er County. Although no LA and HD management office has been established in Jiangcheng County, preparation has begun. The Pu'er PMO invited ADB resettlement officials to offer relevant training in April 2016, strengthening the understanding of ADB's resettlement requirements.

However, there are still some deficiencies in policy understanding and resettlement practices, such as inadequate internal reporting, information compilation, etc. In addition, since the Subproject involves complex issues in compensation and resettlement, etc., the subproject staff must have sufficient capacity to implement it properly.

In view of this, the task force suggests that the resettlement agencies should further strengthen institutional capacity building to ensure that resettlement is implemented successfully according to the RP approved by ADB, including: 1) establishing a LA and HD management office in Jiangcheng County as soon as possible; 2) keeping their staff stable; 3) strengthening training for their staff involved in LA, HD and resettlement pursuant to the training program under the RP; and 4) improving internal management systems, including file, information and fund management.

3 M&E of Resettlement Implementation

3.1 Construction Progress

The Subproject is divided into 10 roadbed packages (NJL-Sub1~NJL-Sub10) and 3 pavement packages (NJL-Pav1~NJL-Pav3), where NJL-Sub6~NJL-Sub10 are fully financed by the government.

As of June 30, 2016, bidding for all the 10 roadbed packages had been completed, and all contracts entered into. Bidding for the 3 pavement packages will be conducted in Q1 2017, and construction will begin in Q4 2017. See Table 3-1.

Ning'er County involves 7 contract packages (NJL-Sub1~NJL-Sub7), with a full length of 130.92km, including the Ning'er Town segment K0+000~K33+000, Mengxian Town segment K33+000~K81+000 and Liming Xiang segment K81+000~K130+915. For contract packages NJL-Sub1 and NJL-Sub6, preparation has been completed, and LA may begin soon; the other contract packages are not ready for LA yet.

Jiangcheng County involves 4 contract packages (NJL-Sub7~NJL-Sub10), with a full length of 103.15km, including the Baozang Xiang segment K130+915~K155+900, Menglie Town segment K155+900~K217+941, Qushui Xiang segment K217+941~K234+069.52. LA measurement has been completed by 15.5km or 15.03% of full length in Jiangcheng County, including 5km in Baozang Town (Contract Package 7), 6km in Menglie Town (Contract Package 8) and 4.5km in Qushui Town (Contract Package 10).

In sum, the Subproject is still at the surveying stage, and LA and HD have not begun.

Table 3-1 Implementation of Contract Packages of the Subproject

No.	Contract package	Contractor	Starting point	Ending point	Length (Km)	Status	Progress	Remarks
1	NJL-Sub1	Liaoning Transport Construction Group Co., Ltd.	KM0+000	KM18+140	17.998	Contract awarded	Not started	Preparation is ready, and construction will begin soon.
2	NJL-Sub2	Yunnan Shengdi Transport Engineering Co., Ltd.	KM18+140	KM35+000	16.432	Contract awarded	Not started	At the surveying stage
3	NJL-Sub3	Yunnan Jinguang Construction Co., Ltd.	KM35+000	KM52+000	11.652	Contract awarded	Not started	Not ready for LA yet
4	NJL-Sub4	Shenmu Yulinag Construction Co., Ltd.	KM52+000	KM72+000	19.69	Contract awarded	Not started	Not ready for LA yet
5	NJL-Sub5	Jiangxi Hongfa Road & Bridge Construction Co., Ltd.	KM72+000	KM101+000	28.959	Contract awarded	Not started	Not ready for LA yet
6	NJL-Sub6	Heilongjiang Longhua Construction Co., Ltd.	KM101+000	KM129+500	24.758	Contract awarded	Not started	Preparation is ready, and construction will begin soon.
7	NJL-Sub7	Maoming Transport Construction Engineering Corp.	KM129+500	KM158+000	31.993	Contract awarded	Not started	At the surveying stage
8	NJL-Sub8	Dongxiang Gandong Road & Bridge Construction Co.,	KM158+000	KM185+000	27.02	Contract awarded	Not started	At the surveying stage

No.	Contract package	Contractor	Starting point	Ending point	Length (Km)	Status	Progress	Remarks
		Ltd.						
9	NJL-Sub9	Jiangxi Guyue Engineering Co., Ltd.	KM185+000	KM212+000	26.824	Contract awarded	Not started	At the surveying stage
10	NJLSub10	Hunan Foreign Construction Group Co., Ltd.	KM212+000	KM234+069.52	22.752	Contract awarded	Not started	At the surveying stage
11	NJL-Pav1	Contract not awarded	KM0+000	KM70+000	63.766	Bidding not started	Not started	Bidding to begin in Q1 2017, construction to begin in Q4 2017, involving no LA/HD
12	NJL-Pav2	Contract not awarded	KM70+000	KM154+000	83.716	Bidding not started	Not started	Bidding to begin in Q1 2017, construction to begin in Q4 2017, involving no LA/HD
13	NJL-Pav3	Contract not awarded	KM154+000	KM234+069.52	80.596	Bidding not started	Not started	Bidding to begin in Q1 2017, construction to begin in Q4 2017, involving no LA/HD

3.2 Land Approval

In October 2012, the Yunnan Provincial Land and Resources Department approved the construction land for the Subproject.

3.3 Resettlement Implementation

The Yunnan Provincial Transport Department approved final construction drawings approved on 18, May, 2016, the Ning'er–Jiangcheng–Longfu Highway Construction Headquarters together with Ning'er and Jiangcheng County Government are carrying out re-measurement based on staking.

In June 2016, the Ning'er County Government issued the LA announcement of the Subproject, and the LA and HD program successively in the affected townships and villages, improving public awareness and participation level.

3.3.1 Acquisition of Collective Land

According to the RP, 2,219.23 mu of rural collective land will be acquired permanently, affecting 1,541 households in 23 villages in Ning'er and Jiangcheng Counties.

As of June 30, 2016, LA preparation was still underway, and LA had not begun.

3.3.2 HD

According to the RP, residential houses of 25,069.38 m² in 17 villages in Ning'er and Jiangcheng Counties will be demolished, affecting 315 households with 1,178 persons.

As of June 30, 2016, HD impacts were still being verified.

3.3.3 Temporary Land Occupation

According to the survey, 150 mu of land will be occupied temporarily for the Subproject.

As of June 30, 2016, the Subproject was still at the construction preparation stage, and temporary land occupation had not occurred. This will be reflect in the next M&E report.

3.4 Resettlement Policies and Compensation Rates

In June 2016, the Ning'er County Government issued the LA and HD program to Ning'er Town, Mengxian Town and Liming Xiang, disclosing the relevant compensation rates. As of June 30, 2016, compensation rates had not been disclosed in Jiangcheng County.

3.4.1 Policies and Compensation Rates of Ning'er County

LA for the Subproject is compensated for based on the Land Administration Law of the PRC, Regulations on the Implementation of the Land Administration Law of the PRC, Land Administration Regulations of Yunnan Province, and the LA and HD program of the Subproject.

1) Permanent LA

The compensation rates for permanent LA are set out in Table 3-2. In addition, the young crop compensation rates for irrigated and non-irrigated land area 1,500 yuan/mu and 1,000 yuan/mu respectively. Compared to the RP, the compensation rate for irrigated land in Xinping, Taida and Xishitou Villages, Ning'er Town has risen from 60,000 yuan/mu to 80,000 yuan/mu; in Qianle, Anning, Xuande and Yalu Villages, Mengxian Town, and Xianren and Tuanshan Villages, Liming Xiang, the compensation rate for irrigated land has risen from 30,000 yuan/mu to 40,000 yuan/mu and that for non-irrigated land has risen from 20,000 yuan/mu to 25,000 yuan/mu. Therefore, the LA compensation rates comply with the RP, and some rates are higher.

Table 3-2 LA Compensation Rates of the Subproject

County	Township	Village	LA compensation rate (yuan/mu)				
			Irrigated land	Non-irrigated land	Garden land	Housing land	Wasteland
Ning'er	Ning'er Town	Minzheng	60000	40000	30000	30000	8000
		Banhai	60000	40000	30000	30000	8000
		Manlian	60000	40000	30000	30000	8000
		Xinping	80000	40000	30000	30000	8000
		Taida	80000	40000	30000	30000	8000
		Xishitou	80000	40000	30000	30000	8000
		Wenquan	60000	40000	30000	30000	8000
		Yuhe	60000	40000	30000	30000	8000
	Mengxian Town	Heping	40000	25000	15000	30000	8000
		Qianle	40000	25000	15000	30000	8000
		Anning	40000	25000	15000	30000	8000
		Xuande	40000	25000	15000	30000	8000
		Yalu	40000	25000	15000	30000	8000
	Liming Xiang	Xianren	40000	25000	15000	30000	8000
		Wangjie	40000	25000	15000	30000	8000
		Tuanshan	40000	25000	15000	30000	8000

2) Woodland

The composite compensation rate for woodland (including trees) is 5,000 yuan/mu, higher than that specified in the RP by 1,200 yuan/mu.

3) Buildings and structures

See Table 3-3.

Table 3-3 Compensation Rates for Buildings and Structures

No.	Type	Unit	Compensation rate (yuan)	
			Planned	Actual
1	Frame structure	m2	/	1800
2	Masonry concrete structure	m2	1400	1500
3	Masonry timber structure	m2	900	1200
4	Earth timber structure	m2	700	800
5	Simple structure	m2	150	400
6	Enclosing walls	Brick	150	60
7		Earth	80	60
8	Stone bank	m2	/	300

9	Cement ground		m2	/	60
10	Gate	Iron	m2	/	350
11		Wood	m2	/	250
12	Biogas tank	<8m	/	/	3500
13		>10m	/	/	4500
14	Cooking range	Single	/	/	500
15		Double	/	/	1000

4) Ground attachments

The compensation rates for ground attachments are set out in Table 3-4. In addition, special commercial crops and seedlings will be appraised by specialized agencies, and their compensation rates will be negotiated based on appraised rates.

Table 3-4 Compensation Rates for Ground Attachments

No.	Type	Unit	Rate (yuan)	
1	Orange, green date, mango, litchi, longan, peach, plum, citrus, persimmon, waxberry, pomegranate, prickly ash, citron, papaw, loquat, mulberry, etc.	Non-fruit-bearing	/	15
2		Fruit-bearing	/	30
3		Booming	/	60
4	Bamboo		/	10
5	Plantain		/	5
6	Banana		/	8
7	Guava, papaya	Non-fruit-bearing	/	5
8		Fruit-bearing	/	20
9	Chestnut, nuts, walnut	Non-fruit-bearing	/	20
10		Fruit-bearing	/	50
11		Booming	/	300
12	Tealeaf, coffee	=<3 years	mu	6000
13		Booming	mu	10000
14	Rubber	Uncut	/	100
15		Cut	/	200
16	Steel greenhouse	m2		30
17	Bamboo greenhouse	m2		15
18	Fishpond	>10 mu	mu	3600
19		=<10 mu	mu	2000
20	Lotus root	mu		4000

5) Tomb relocation

The compensation rate for relocated tombs is 8,000 yuan per earth tomb or 12,000 yuan per brick/stone tomb.

In addition, compensation rates for other special facilities will be based on industrial technical standards.

3.4.2 Policies and Compensation Rates of Jiangcheng County

Compensation rates in Jiangcheng County have not been disclosed. Therefore, the task force advises the Jiangcheng County Government to disclose final LA and HD policies and compensation rates as soon as possible.

3.5 Funds and Disbursement

3.5.1 Disbursement Progress

As of June 30, 2016, resettlement had not begun, involving no fund disbursement.

3.5.2 Disbursement Process

All LA and resettlement funds are raised by PMG, and managed by PTIG. As resettlement agencies, the county governments ensure that all required resettlement funds are available timely

and fully. See Figure 3-1.

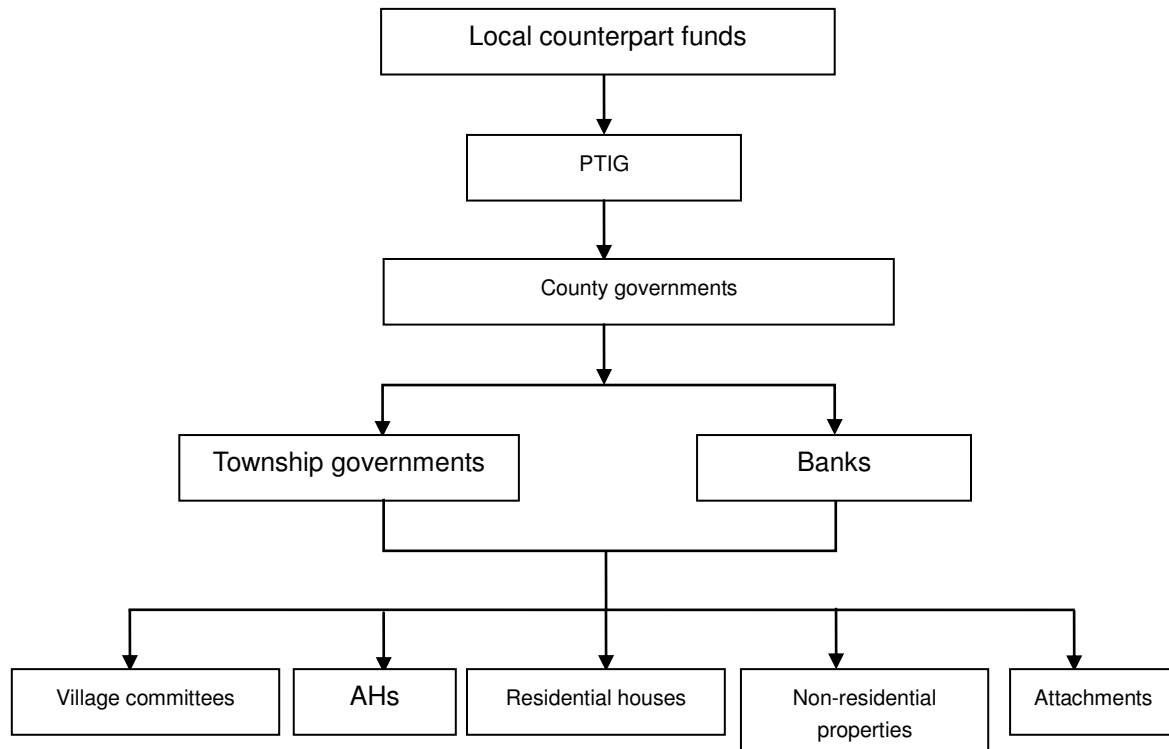


Figure 3-1 Fund Disbursement Flowchart

3.6 Evaluation

Through field investigation, interviews, FGDs and literature review, the task force thinks that:

1) According to the RP, LA and resettlement will begin in November 2015, and be largely completed in December 2016. As of June 30, 2016, the resettlement work of the Subproject was behind schedule.

2) The Ning'er County Government has disclosed the final LA and HD policies and compensation rates, which are higher compared to the RP. However, final LA and HD policies and compensation rates have not been disclosed by the Jiangcheng County Government yet.

4 Public Participation and Grievance Redress

4.1 Public Participation

At all stages of the Subproject, the Pu'er PMO and the IA attach great importance to public participation and consultation, collect comments from government agencies, affected enterprises and APs extensively, and encourage all stakeholders to take an active part in the Subproject.

4.1.1 Preparation Stage

At the preparation stage, the Pu'er PMO, Pu'er Transport Investment (Group) Co., Ltd. (PTIG), IA, township governments, and RP preparation agency carried out various public participation activities, such as community mobilization and publicity, social survey, planning, which promoted local residents' awareness of the Subproject, compensation rates and resettlement policies.

4.1.2 Implementation Stage

At the implementation stage, PMG, Pu'er Transport Bureau and PMO, PTIG, the resettlement agencies, etc. conducted extensive public participation and consultation, including announcement posting, mobilization meeting, RIB distribution, etc.

1) Public meetings

In June-July 2015, public meetings were held in the affected villages to explain the relevant policies, regulations and compensation rates, and further discuss resettlement measures.

2) RIB distribution

In order that the APs and local governments are fully aware of the compensation rates and the RP, the resettlement agencies distributed to the RIB to the villages and households affected in August 2015, covering the state laws and regulations on resettlement, compensation rates, entitlements, policies, etc.



Figure 4-1 RIB Distribution in Jiangcheng County

3) Posting of LA announcement, and LA and HD program

In June 2016, the Ning'er County Government issued the LA announcement of the Subproject, and the LA and HD program successively in the affected townships and villages to ensure information openness and transparency.

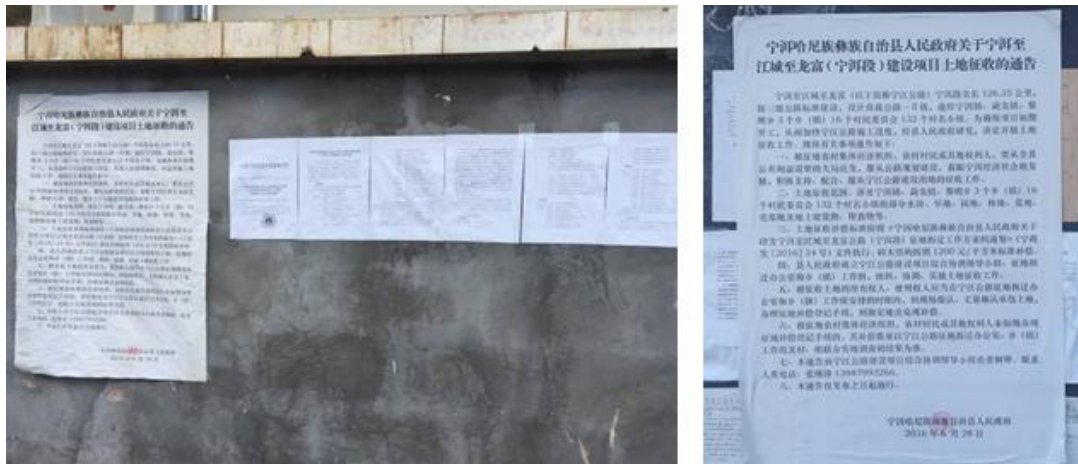


Figure 4-2 LA Notice, and LA and HD Program of Ning'er County

4) Implementation of the public participation plan

During the implementation of the public participation plan, the agencies responsible have carried out relevant activities, protecting the APs' lawful rights and interests. See Table 4-1.

Table 4-1 Implementation Progress of Public Participation

Time	Activity	Agencies	Implementation progress
2015.6-7	Discussing LA compensation rates and progress, and improving resettlement measures	Owner, township governments, AP representatives	Relevant meetings have been held in Ning'er Town and Liming Xiang, Ning'er County; Baozang Xiang, Jiangcheng County.
2015.8	RIB distribution	Pu'er PMO	The RIB has been distributed to all APs.
2016.6.28	Posting of LA announcement in Ning'er County	Ning'er County and township governments	It has been fully posted in 16 affected villages, 3 townships in Ning'er County.
2016.6.30	Posting of LA and HD program in Ning'er County	Ning'er County and township governments	It has been fully posted in 16 affected villages, 3 townships in Ning'er County.
2016.1-7	Internal monitoring	Pu'er PMO	Two rounds of internal monitoring were conducted in January and July 2016, and a quarterly report has been completed.
2016.7-	Internal monitoring and baseline survey	External M&E agency	In July 2016, the external M&E agency conducted a baseline survey on 135 AHs in the first round of resettlement M&E.

5) Public participation during external M&E

During external M&E, the external M&E agency has conducted a series of public participation activities, including questionnaire survey, FGD and interview, to learn LA and HD progress, and discuss income restoration and resettlement programs with the assistance of the PMOs and the resettlement agencies. See Table 4-2.

Table 4-2 Public Participation Activities during External M&E

Method	Time	Venue	Participants	Results
Questionnaire survey	Jul. 21 – Aug. 1, 2016	12 villages in 6 townships in 2 counties	Pu'er PMO, township governments, village committees, task force	135 copies of the questionnaire (10-20 copies per village) were distributed to learn the population and composition, income and expenditure of the sample households, and a baseline database was established.
FGD	Jul. 21	12 villages in 6	Villager	21 FGDs were held, with 190 participants

Method	Time	Venue	Participants	Results
	– Aug. 1, 2016	townships in 2 counties	representatives, Pu'er PMO, task	(including 75 women, accounting for 39.47%) were held to learn LA, HD and resettlement progress, potential issues, and suggestions.
Key informant interview	Jul. 21 – Aug. 1, 2016	1) Pu'er PMO; 2) PTIG; 3) township governments and village committees	1) PMO head; 2) PTIG head; 3) township and village officials	Learning construction and investment progress, public participation, potential issues and suggestions, local socioeconomic profile, etc.
Personal in-depth interview	Jul. 21 – Aug. 1, 2016	12 villages in 6 townships in 2 counties	APs, including women and old people	Learning villagers' needs and expectations for the Subproject, awareness of the Subproject, and degree of participation.

4.2 Grievance Redress

A transparent and effective grievance redress mechanism has been established during resettlement implementation, as detailed below:

Stage 1

If any AP is dissatisfied with the RP, he/she may file an oral or written appeal with the village committee, township government or county resettlement office, which should make a disposition and keep written records within two weeks.

Stage 2

If the AP is dissatisfied with the disposition of Stage 1, he/she may file an appeal with the county PMO after receiving such disposition, which should make a disposition within two weeks.

Stage 3

If the AP is dissatisfied with the disposition of Stage 2, he/she may file an appeal with the Pu'er PMO after receiving such disposition, which should make a disposition within two weeks.

Stage 4

If the AP is still dissatisfied with the disposition of Stage 3, he/she may file an appeal with the competent authorities level by level in accordance with the Administrative Procedure Law.

At any stage, an AP may bring a suit in a civil court directly if he/she is dissatisfied with the grievance redress procedure or disposition.

All grievances, oral or written, will be reported to ADB in internal and external resettlement monitoring reports.

If any AP may also file an appeal with the Office of the Special Facilitator or Compliance Review Panel of ADB in accordance with ADB's accountability mechanism.

All agencies will accept grievances and appeals from the APs for free, and costs so reasonably incurred will be disbursed from contingencies. During the whole construction period of the Subproject, these appeal procedures will remain effective to ensure that the APs can use them to address relevant issues. The above grievance redress mechanism will be communicated to the APs at a meeting or through the RIB.

4.3 Evaluation

It is learned that project information is well disclosed, and the level of public participation is high. Some concerns the APs have been addressed properly by village collectives. The Pu'er PMO has not received any grievance.

The task force thinks that the adequate public participation and grievance redress mechanisms of the Subproject played a great role during resettlement. In the future, the PMO and resettlement agencies should collect and handle grievances and appeals properly. In addition, final LA and HD policies and compensation rates should be disclosed, and publicity and public participation

strengthened in Jiangcheng County.

5 Findings and Suggestions

5.1 Key Findings

1) **Project and resettlement implementation progress**

As of June 30, 2016, construction had not begun, and all contract packages were at the surveying stage.

2) **Organizational structure**

PTIG has established the Ning'er–Jiangcheng–Longfu Highway Construction Headquarters as instructed by PMG, responsible for the construction, quality, progress and safety management of the Ning'er–Jiangcheng–Longfu Highway, and the coordination of LA, HD and preparation with the Ning'er and Jiangcheng County Governments. The Ning'er County LA and HD Management Office has been established, responsible for implementing impact registration, compensation calculation and payment, resettlement, etc. for the Subproject. However, no LA and HD management office has been established in Jiangcheng County, but preparation has begun. In April 2016, the Pu'er PMO invited ADB resettlement officials to offer relevant training. However, the resettlement agencies still have some deficiencies in file management. For example, videos on public participation during resettlement and project implementation, e-mails related to the Subproject, and records of major resettlement events are missing.

3) **Compensation policies and rates**

The Ning'er County Government has disclosed the final LA and HD policies and compensation rates, which are higher compared to the RP. However, final LA and HD policies and compensation rates have not been disclosed by the Jiangcheng County Government yet.

4) **Information disclosure and public participation**

The RIB was distributed to the AHs in Ning'er and Jiangcheng Counties in August 2015.

In June 2016, the Ning'er County Government disclosed the LA and HD policies and compensation rates in the affected area.

Most of the respondents are aware of the Subproject, and 100% of them support the Subproject and expect the Subproject to be implemented as soon as possible. The IA has disclosed project information timely and fully to the public by means of Internet, FGD and village meeting. The public participation mechanism is sound and the RIB has been distributed.

5) **Grievance redress**

A transparent and effective grievance redress mechanism has been established during resettlement implementation. The APs may file appeals with the Pu'er PMO, the county or township government, and village committee, or bring a suit in the people's court.

5.2 Suggestions

1) **Organizational structure**

The resettlement agencies should further strengthen institutional capacity building to ensure that resettlement is implemented successfully according to the RP approved by ADB, including: 1) establishing a LA and HD management office in Jiangcheng County as soon as possible; 2) keeping their staff stable; 3) strengthening training for their staff involved in LA, HD and resettlement pursuant to the training program under the RP; and 4) improving internal management systems, including file, information and fund management.

2) **LA and HD impacts**

According to the formal construction drawings approved by the Yunnan Provincial Transport Department in May 2016, the Subproject's resettlement impacts have varied to some extent. The Pu'er and county PMOs should make a comparative analysis of resettlement impacts after the completion of surveying.

3) **Accelerating LA and resettlement**

According to the RP, LA and resettlement will begin in November 2015, and be largely completed in December 2016. As of June 30, 2016, the Subproject was still at the surveying stage, and LA and HD had not begun. Resettlement progress should be accelerated to suit construction progress.

4) **Strengthening publicity and public participation**

Final LA and HD policies and compensation rates should be disclosed, and publicity and public participation strengthened in Jiangcheng County.

5) **Organizing implementation in strict conformity with LA and HD procedures, and**

ADB's policy

Currently, the LA and HD policies and procedures are sound, and administrative provisions on HD appraisal, ruling, public hearing, etc. are in place. In subsequent resettlement work, issues arising from LA and HD should be handled properly in strict conformity with the established procedures to protect the APs' lawful rights and interests. The resettlement implementation contract should include the provision of "ensuring conformity with the RP approved by ADB" so that resettlement implementation complies with both the applicable state regulations and ADB's policy on involuntary resettlement.

6) Improving the information disclosure mechanism

In order that the APs are fully aware of the Subproject's impacts, resettlement modes, compensation rates, appeal channels, etc., further publicity on the resettlement policies of the Subproject should be conducted.

7) Paying attention to the livelihood restoration and house reconstruction of the APs

The APs may become distressed due to the improper use of compensation fees. The resettlement agencies should establish a database of the APs (including contact information), and track their livelihood restoration and house construction regularly to ensure that the objectives of resettlement are realized.

Appendixes

Appendix 1 M&E Methods (No.1)

Method	Time	Venue	Size	Participants	Remarks
1. Literature review	Jul. 20, 2016	Pu'er PMO	6	Pu'er PMO, task force	Literatures: 1) RP approved by ADB, etc.; 2) Statistical Yearbook of Pu'er City (2015); 3) local plans; 4) subproject progress, etc.
2. Sampling survey	Jul. 21 – Aug. 1, 2016	Manlian, Xinping and Wenquan Villages, Ning'er Town; Xianren and Tuanshan Villages, Liming Xiang; Anning and Xuande Villages, Mengxian Town, Ning'er County; Shuicheng and Banhe Villages, Baozang Xiang; Jiangbian and Dazhai Villages, Menglie Town; Basan Village, Qushui Town, Jiangcheng County	185 copies, 10-20 per village	Pu'er PMO, township governments, village committees, task force	Learning the population and composition, income and expenditure of the sample households, and establishing a baseline database
3. FGD	Jul. 21 – Aug. 1, 2016	Manlian, Xinping and Wenquan Villages, Ning'er Town; Xianren and Tuanshan Villages, Liming Xiang; Anning and Xuande Villages, Mengxian Town, Ning'er County; Shuicheng and Banhe Villages, Baozang Xiang; Jiangbian and Dazhai Villages, Menglie Town; Basan Village, Qushui Town, Jiangcheng County	21	Villager representatives, Pu'er PMO, task	Basic village information; villagers' attitudes to and needs for the Subproject; LA and HD progress, compensation and resettlement, etc.
4. Key informant interview	Jul. 21 – Aug. 1, 2016	1) Pu'er PMO; 2) PTIG; 3) County PMOs 4) Township governments and village committees	13	1) PMO head; 2) PTIG head; 3) township and village officials	Learning construction and investment progress, public participation, potential issues and suggestions, local socioeconomic profile, etc.
5. Personal in-depth interview	Jul. 21 – Aug. 1, 2016	Manlian, Xinping and Wenquan Villages, Ning'er Town; Xianren and Tuanshan Villages, Liming Xiang; Anning and Xuande Villages, Mengxian Town, Ning'er County; Shuicheng and Banhe Villages, Baozang Xiang; Jiangbian and Dazhai Villages, Menglie Town; Basan Village, Qushui Town, Jiangcheng County	12	APs, including women and old people	Villagers' needs and expectations for the Subproject, awareness of the Subproject, and degree of participation

Appendix 2 FGD and Interview Minutes (No.1)

Project	Ning'er–Jiangcheng–Longfu Highway Subproject	
Date	July 25, 2016	
Venue	Ningjiang Highway Construction Headquarters	
Participants	Director of the construction headquarters; Mr. Ma and Mr. Zhou from PTIG; task force	
Key points and findings	<ol style="list-style-type: none"> 1. Construction progress; 2. Existing issues and suggestions; 3. Subsequent work plan; 4. Fund disbursement process; 5. Organizational setup, etc. 	
Photo		

Project	Ning'er–Jiangcheng–Longfu Highway Subproject	
Date	July 25, 2016	
Venue	Ningjiang Highway Construction Headquarters	
Participants	Staff members of the LA and HD management office; Director of the construction headquarters; Mr. Ma and Mr. Zhou from PMO; task force	
Key points and findings	<ol style="list-style-type: none"> 1. Construction progress; 2. Existing issues and suggestions; 3. Subsequent work plan; 4. Coordination mechanism between the LA and HD management office, and government agencies 	
Photo		

Project	Ning'er–Jiangcheng–Longfu Highway Subproject	
Date	July 25, 2016	
Venue	Ning'er Town Government	
Participants	Government officials; Director of the construction headquarters; Mr. Ma and Mr. Zhou from PMO; task force	
Key points and findings	<ol style="list-style-type: none"> 1. Socioeconomic statistics; 2. Posting of LA and HD announcement; 3. Resettlement progress, existing issues, suggestions, etc.; 4. Future township development planning; 	

Appendix 4 Announcement of the Ning'er County Government on LA for the Ning'er–Jiangcheng–Longfu Highway (Ning'er Segment) and Notice on Compensation Rates for Temporary Land Use

宁洱哈尼族彝族自治县人民政府关于宁洱至江城至龙富(宁洱段)建设项目土地征收的通告

宁洱至江城至龙富(以下简称宁江公路)宁江段全长126.35公里,按三级公路标准建设,设计荷载公路一级,途经宁洱镇、勐先镇、黎明乡3个乡(镇)16个村民委员会132个村名小组。为确保项目如期开工,从而加快宁江公路施工进度,经县人民政府研究,决定开展土地征收工作。现将有关事项通告如下:

一、被征地农村集体经济组织、农村村民或其他权利人,要从全县公共利益需要的大局出发,服从公路规划建设,着眼宁洱经济社会的发展,积极支持、配合,服从宁江公路建设用地的征收工作。

二、土地征收范围。涉及宁洱镇、勐先镇、黎明乡3个乡(镇)16个村民委员会132个村名小组的部分水田、旱地、园地、林地、荒地、宅基地及地上建筑物、附着物等。

三、土地征收补偿标准按照《宁洱哈尼族彝族自治县人民政府关于印发宁洱至江城至龙富公路(宁江段)征地拆迁工作方案的通告》(宁政发〔2016〕24号)文件执行。砖木结构按照1200元/平方米标准补偿。

四、县人民政府成立宁江公路建设项目综合协调领导小组,征地拆迁办公室和乡(镇)工作组,组织、协调、实施土地征收工作。

五、被征收土地的所有权人、使用权人应当在宁江公路征地拆迁办公室和乡(镇)工作组安排的时限内,到现场指认,丈量确认承包土地,办理征地补偿登记手续,到指定地点兑现补偿。

六、被征地农村集体经济组织、农村村民或其他权利人未如期办理征地补偿登记手续的,其补偿数量以宁江公路征地拆迁办公室、乡(镇)工作组及村、组联合实地调查的结果为准。

七、本通告由宁江公路建设项目综合协调领导小组负责解释,联系人及电话:张继泽 13987993266。

八、本通告自发布之日起施行。

宁洱哈尼族彝族自治县人民政府
2016年6月28日

宁江公路宁洱段临时用地补偿标准的通知

为切实做好宁江公路建设项目临时用地的征用工作,确保项目建设顺利开工建设,根据《中华人民共和国土地管理法》、《云南省土地管理条例》、《云南省征地利一年产值标准和征地区片综合地价补偿标准》(试行)等有关法律法规,结合宁洱实际,现将有关事项通知如下:

一、补偿标准

水田:1500元/亩·年(一年按大春、小春两季补偿,占一季补一季;大春1000元/亩·年,小春500元/亩·年);旱地:1000元/亩·年(一年按两季补偿,每季500元);园地:1000元/亩·年;
林地、荒地等其他土地:400元/亩·年。

二、土地复垦及复垦保证金缴存

临时占用土地,应根据国土部门审核批准的土地复垦方案签订监管协议,足额缴存复垦保证金,施工结束复垦后,经相关部门验收合格,退还保证金;达不到验收标准的,扣减复垦保证金或继续复垦,直至验收合格。

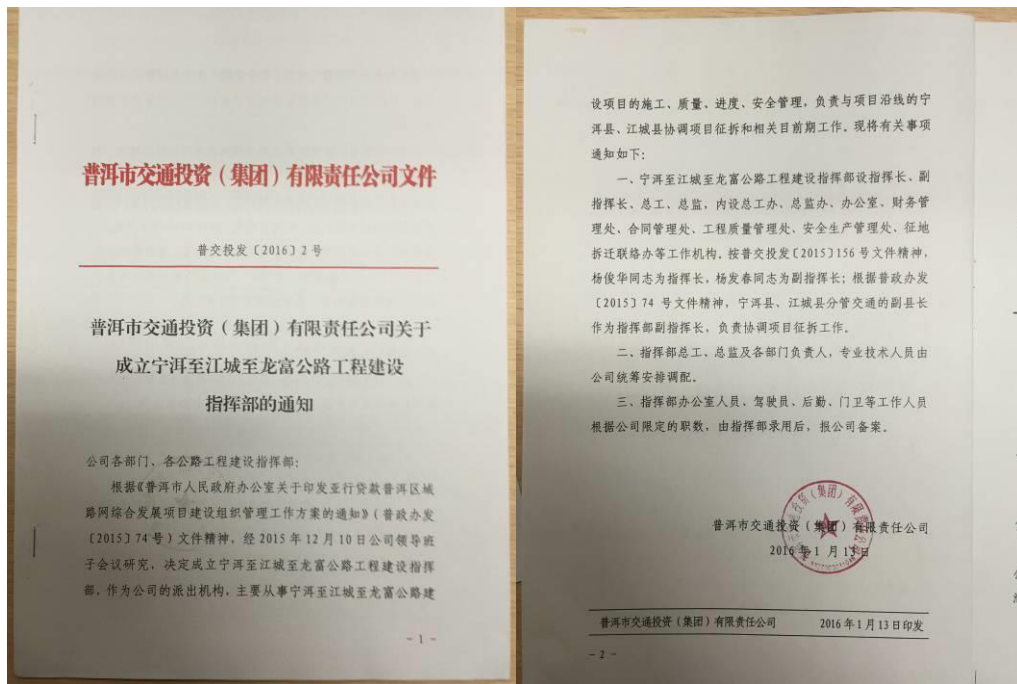
三、临时用地管理

项目建设需要征用临时用地由工程施工单位提出申请,乡(镇)人民政府负责协调丈量,签订临时用地协议书,上报土地行政主管部门根据审批权限逐级上报审批;占用林地,由林业部门根据相关规定办理审批手续。

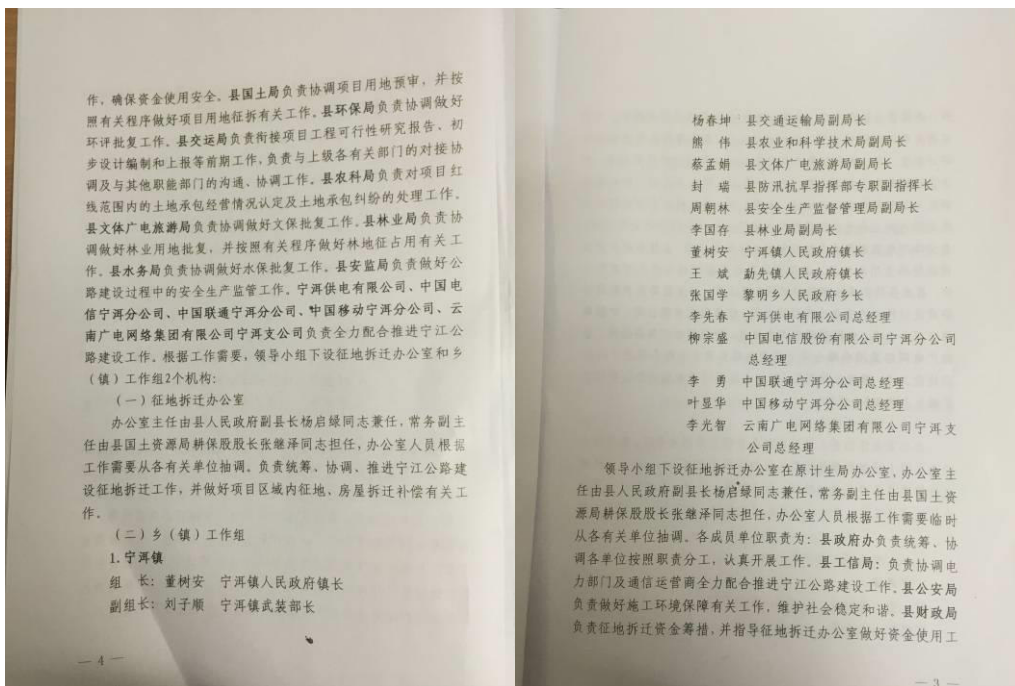
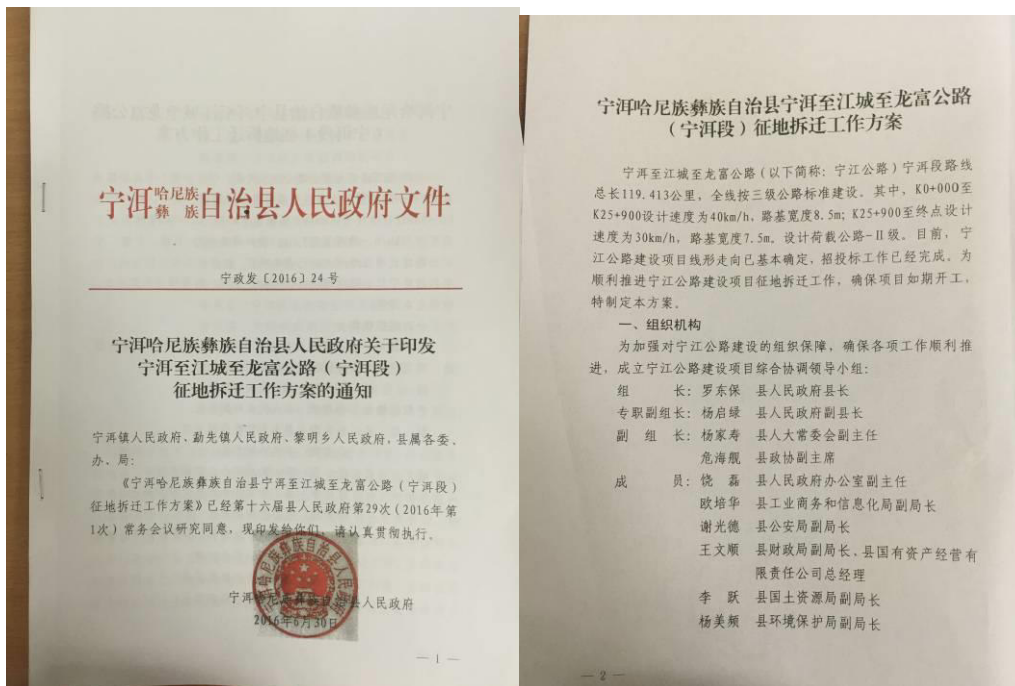
四、工程施工队不得直接与农户商议使用临时用地,否则,所发生的经济纠纷和法律责任均由施工队负责。

宁洱哈尼族彝族自治县勐先镇人民政府
2016年7月5日

Appendix 5 Notice of Pu'er Transport Investment (Group) Co., Ltd. on Establishing the Ning'er–Jiangcheng–Longfu Highway Construction Headquarters



Appendix 6 Notice of the Ning'er County Government on Issuing the LA and HD Program for the Ning'er–Jiangcheng–Longfu Highway



宁江公路（宁再段）实际，征地补偿标准如下：

（一）永久性征收土地

1. 宁再镇：新平、大达、细石头村民委员会的涉及村组，水田综合补偿标准80000元/亩；旱地综合补偿标准40000元/亩；园地综合补偿标准30000元/亩。曼连、民政、般海、温泉村民委员会的涉及村组，水田综合补偿标准60000元/亩；旱地综合补偿标准40000元/亩；园地综合补偿标准30000元/亩；
2. 勤先镇：和平、谦乐、安宁、宣德、雅鹿等村民委员会，黎明乡：汪街、仙人、团山村村民委员会的涉及村组，水田综合补偿标准40000元/亩；旱地综合补偿标准25000元/亩；园地综合补偿标准15000元/亩；
3. 宅基地补偿标准：30000元/亩；
4. 荒地、空闲地补偿标准：8000元/亩；
5. 青苗补偿标准：水田一次性补偿每亩1500元；旱地一次性补偿每亩1000元。

（二）林地征占用补偿标准

林地征占用涉及林木采伐指标由县林业局统一安排预留，所有权者依据林业管理部门有关要求进行处理。

1. 永久性征收林地。林地综合补偿标准（含林地、林木补偿费）全县统一为3000元/亩；
2. 临时占用林地、防护林、用材林综合补偿标准为每亩每年700元，灌木林每亩每年400元；

（三）地上建筑物及构筑物拆迁补偿标准

1. 框架结构：1800元/m²；

2. 砖混结构：1500元/m²；
3. 砖木结构：1200元/m²；
4. 土木结构：800元/m²；
5. 简易房：400元/m²；
6. 围墙：60元/m²；
7. 石堤：300元/m²；
8. 水泥地坪：60元/m²；
9. 大门：铁门350元/m²，木门250元/m²；
10. 沼气池：8m以下3500元/口，10m以上4500元/口；
11. 单灶500元/灶，双灶1000元/灶；

（四）地上附着物补偿标准

1. 柑橘、青枣、芒果、荔枝、龙眼、桃子、李子、桔子、柿子、杨梅、石榴、花椒、香蕉、木瓜、枇杷、桑葚等未挂果的15元/棵，挂果的30元/棵，盛产期60元/棵；
2. 竹子：10元/株，芭蕉：5元/株（综合价），香蕉：8元/株（综合价）；
3. 番石榴、番木瓜：未挂果的5元/株，挂果的20元/株；
4. 核桃、坚果、板栗：未挂果20元/株，挂果的50元/株、盛产300元/株；
5. 茶叶、咖啡：3年以内的6000元/亩，盛产10000元/亩；
6. 橡胶：未开割100元/株，开割200元/株；
7. 钢架大棚：30元/平方米，竹木大棚：15元/平方米；
8. 鱼塘：10亩以上3600元/亩，10亩以下2000元/亩；
9. 莲藕：4000元/亩；

张晓明 勤先镇和平村党总支书记
苏宏 勤先镇谦乐村党总支书记
李杰 勤先镇安宁村党总支书记
李光鹏 勤先镇宣德村民委员会主任
李映坤 勤先镇雅鹿村民委员会主任

3. 黎明乡

组长：张国学 黎明乡人民政府乡长
副组长：王程 黎明乡人民政府副乡长
成员：杨恒国 黎明派出所所长
罗亚斌 黎明乡财政所所长
雷世刚 黎明乡村镇规划建设服务中心主任
朱家福 黎明乡国土所所长
罗承良 黎明乡农业服务中心主任
耶忠秀 黎明乡林业服务中心主任
罗明彬 黎明乡汪街村党总支书记
李世龙 黎明乡仙人村党支部书记
王安禹 黎明乡团山村党支部书记

主要职责：按照分级负责，属地管理原则，负责做好各行政区域内的征地拆迁和临时用地协调监管等各项工作，并为施工单位创造良好的施工环境。

二、征地补偿标准

根据《中华人民共和国土地管理法》和《云南省土地管理条例》有关规定，按照《宁再哈尼族彝族自治县人民政府关于调整土地征收标准的通知》（宁政发〔2012〕174号）文件要求，结合

成员：郭少龙 宁再派出所所长
罗雄荣 宁再镇财政所所长
杨绍明 宁再镇国土所所长
赵波 宁再镇农业服务中心主任
罗宗海 宁再镇林业服务中心主任
沐剑宁 宁再镇镇规划建设服务中心副主任
王飞 宁再镇曼连村党总支书记、村民委员会主任

王治文 宁再镇新平村民委员会主任

李存珍 宁再镇大达村民委员会主任

陈天和 宁再镇细石头村民委员会主任

李春云 宁再镇民政村民委员会主任

赵永才 宁再镇般海村民委员会主任

李宏伟 宁再镇温泉村党总支书记、村民委员会主任

任

2. 勤先镇

组长：王斌 勤先镇人民政府镇长

副组长：李荣华 勤先镇人民政府副镇长

成员：李昀辉 勤先派出所所长

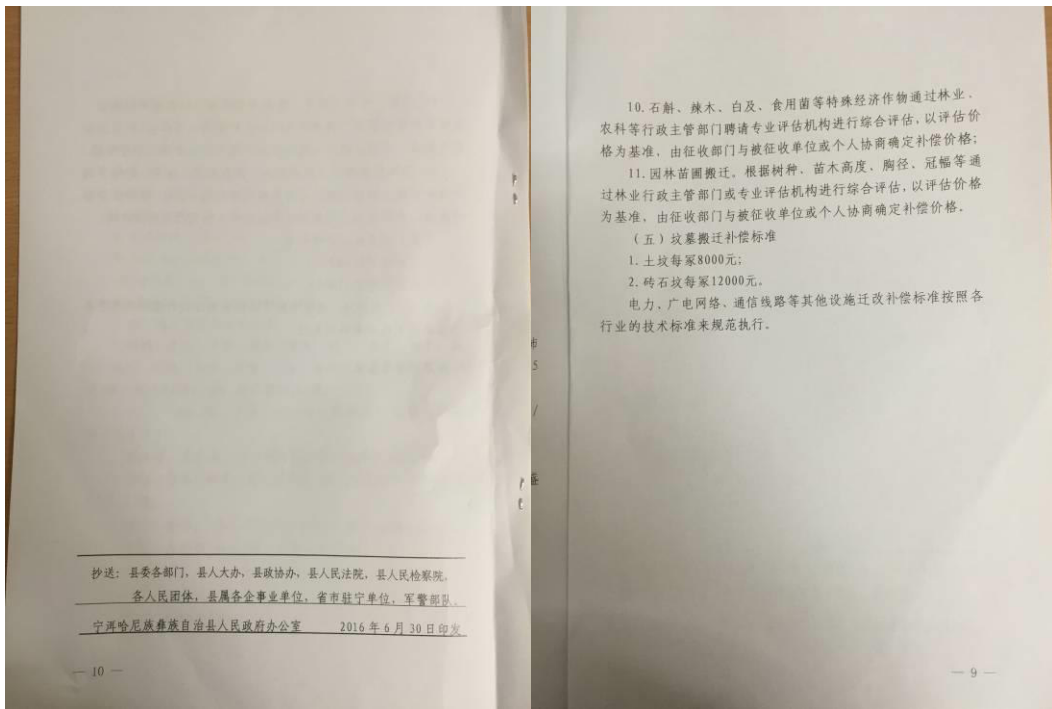
钱鹏洲 勤先镇财政所所长

赵高翔 勤先镇镇规划建设服务中心主任

魏涛 勤先镇国土所所长

李光平 勤先镇农业服务中心主任

周益彬 勤先镇林业服务中心副主任



Appendix 7 Fieldwork Photos



Fieldwork photo



FGD at the Ning'er County LA and HD Management Office



Interview at the Mengxian Town Government



Villager interview in Xuande Village, Mengxian Town



Villager interview in Banhe Village, Baozang Xiang



Villager interview in Shuicheng Village, Baozang Xiang



Villager interview in Jiangbian Village, Menglie Town



FGD in Jiangcheng County