



External Resettlement Monitoring Report

Project Number: 45507-003
February 2015

PRC: Yunnan Chuxiong Urban Environment Improvement Project - External Resettlement Monitoring Report (No. 1) for Longchuan River Component

Prepared by Sichuan Fontal Strategic Consulting Co., Ltd

For Chuxiong Prefecture Project Management Office

This External Resettlement Monitoring Report is a document of the borrower. The views expressed herein do not necessarily represent those of ADB's Board of Directors, Management, or staff, and may be preliminary in nature.

In preparing any country program or strategy, financing any project, or by making any designation of or reference to a particular territory or geographic area in this document, the Asian Development Bank does not intend to make any judgments as to the legal or other status of any territory or area.

Asian Development Bank

**Upper Longchuan River Regulation Work of the Chuxiong Yi Autonomous
Prefecture Urban Environmental Improvement Project**

**Resettlement External Monitoring Report
(Phase I)**

Sichuan Fontal Strategic Consulting Co. Ltd

February 2015

Table of Contents

1.	Overview	2
1.1	Basic Information of the Project	2
1.2	Construction Progress of the Project	2
1.3	Land Acquisition, Demolition and Resettlement	2
1.4	Monitoring and evaluation	2
2.	Monitoring on Impacts of the Project.....	2
2.1	Monitoring on General Physical Impacts of the Project	2
2.2	Monitoring on Physical Indicators of Permanent Land Acquisition	2
2.3	Temporary Land Acquisition by the Project	3
2.4	Monitoring on Physical Indicators of Infrastructure	3
2.5	Monitoring on Population Affected by the Project.....	3
3.	Monitoring on Compensation Standards	4
4.	Monitoring on Resettlement Institutions	5
4.1	General Monitoring on Resettlement Institutions.....	5
4.2	Monitoring on Exact Resettlement Action Institutions	5
4.3	Measures to Strengthen Capability of Institutions.....	6
5.	Public Participation	8
6.	Work Arrangements for the Next Step	9

1. Overview

1.1 Basic Information of the Project

Chuxiong Urban Infrastructure and Environmental Improvement Project (the Upper Longchuan River Regulation Works) (the Project) is one of the sub-projects of the Urban Environmental Improvement Project of Chuxiong Yi Autonomous Prefecture with the loan from the Asian Development Bank (ADB). Coverage of the Longchuan River regulation works is the segment from the exit of Qingshanzui Reservoir spillway to the High-way Bridge of Shangzhang Village, with total planned regulation length of 9.377km.

1.2 Construction Progress of the Project

As of the current monitoring phase, construction of the Project hasn't started yet. It is expected that the approval documents for the preliminary design of the Project will be received in Feb 2015, reviewing on construction drawings of the first batches of construction items will be finished in this July, preparation of bidding documents will be finished and submitted to the ADB for investigation in this August and the first civil contract will be concluded in this October.

1.3 Land Acquisition, Demolition and Resettlement

As of Jan 2015, no land acquisition or resettlement action involved in the Project has been carried out.

1.4 Monitoring and evaluation

Sichuan Fontal Strategic Consulting Co., Ltd, entrusted by the ADB Project Office of Chuxiong Prefecture with the external independent monitoring and evaluation service on the Project, has prepared the *Outline of External Monitoring and Evaluation Work on Resettlement* which defines the scope, contents, monitoring indicators, working methods and time schedule of the external monitoring and evaluation service this time.

Later, the monitoring team went to the Project site to collect the first-hand information. The monitoring team has, based on features of the Project and progress of the same, carried out relatively comprehensive survey among all towns and villages affected by the Project; the team has investigated also on the public participation of the affected population in the early stage of land acquisition work, so that to identify possible problems in the early preparatory work of the resettlement action and report such problems to the resettlement institutions and raise suggestions for improvements.

2. Monitoring on Impacts of the Project

2.1 Monitoring on General Physical Impacts of the Project¹

Impacts of the Project are mainly permanent land acquisition, without house demolition or temporary land acquisition being involved. Totally 5 administrative villages from 1 town of Chuxiong are involved in land acquisition by the Project, covering 190.24mu collectively-owned land (including 181.38mu farmland and 8.86mu vegetable land) and 1,215 people from 273 households.

2.2 Monitoring on Physical Indicators of Permanent Land Acquisition

Totally 190.24mu collectively-owned land is expropriated by the Project, including 181.38mu farmland and 8.86mu vegetable land, with 1,215 people from 273

¹Note: The design proposal is to be adjusted because that the Yongxing Avenue to be built in Chuxiong Development Zone has some conflict with some part of the Longchuan River to be regulated. According to the memorandum of the Asian Development Bank, the resettlement action plan (RAP) of the Project should be update, so the planning data will be update in monitoring report II.

households being affected. See Table 2-1 for details.

Table 2-1 List of Collectively-owned Land To Be Expropriated Permanently

Town	Village	Sub-village	Permanently Expropriated (mu)			Affected Population	
			Farmland	Vegetable Land	Sub-total	By Household	By Person
Donggua	Cheping	Banqiao	4.86	0.00	4.86	12	51
		Xiaogou	2.50	0.00	2.50	3	13
		Wanguanshan	35.03	0.00	35.03	34	148
		Shengjia	4.83	0.00	4.83	20	96
		Shanzuizi	11.91	0.00	11.91	14	63
		Renjia	3.23	0.00	3.23	11	47
		Chepingtun	2.70	0.00	2.70	2	8
	Donggua	Zhuyuan	4.24	2.93	7.17	12	57
		Dongyi	22.69	5.93	28.62	32	130
		Dong'er	29.25	0.00	29.25	26	125
	Yongxing	Shuihe Team I	27.16	0.00	27.16	56	244
		Shuihe Team II	13.50	0.00	13.50	17	75
		Shuihe Team III	19.47	0.00	19.47	34	158
Total			181.38	8.86	190.24	273	1215

2.3 Temporary Land Acquisition by the Project

Some state-owned roads and greening belts will be occupied temporarily to stack materials and set up work sheds for the construction of the Project, however, no population will be affected here. Totally __ mu of land will be used temporarily according to the Project plan. Anyway, since construction of the Project hasn't started yet, no actual temporary land acquisition has taken place as of the current monitoring phase.

2.4 Monitoring on Physical Indicators of Infrastructure

Special facilities affected by the Project include mainly the power lines and communication cables. Since the land acquisition work hasn't started yet as of the current monitoring phase, exact physical indicators of affected infrastructure will be reported in the report of the next monitoring phase.

2.5 Monitoring on Population Affected by the Project

Totally 1,215 people from 273 households are affected by the Project, all affected by land acquisition.

Main disadvantaged groups of the Project are disabled households, households enjoying the five guarantees and households enjoying the minimum living guarantee. See Table 2-2 for details of disadvantaged groups of the Project.

Table 2-2 Disadvantaged Population Affected by the Project

Village/ community	No. of Households	In Which (households)				Family Members	Disadvantaged Population	Male	Female
		Female Householder	Enjoying Minimum Living Guarantee	Enjoying Five Guarantee	Disabled				
Donggua	13	0	2	0	12	50	20	27	23
Cheping	5	0	5	0	1	13	7	6	7
Yongxing	17	1	5	1	10	40	20	19	21
Total	35	1	12	1	23	103	47	52	51

3. Monitoring on Compensation Standards

Standards of compensation for land acquisition and demolition shall be subject strictly to related laws and policies of the central and local governments and the Resettlement Action Plan for the Upper Longchuan River Regulation Work of Chuxiong Urban Infrastructure and Environmental Improvement Project.

As of the current monitoring phase, since compensation work for land acquisition and demolition hasn't started yet, the actual compensation standards will be monitored later after the Project is implemented and will be reported in future monitoring phases.

4. Monitoring on Resettlement Institutions

4.1 General Monitoring on Resettlement Institutions

Whether the land acquisition, demolition and resettlement work involved in the Project can be implemented strictly following the RAP depends greatly on the availability of a powerful resettlement institution. Knowledge gained by the external monitoring team on the Project field shows that the People’s Government of Chuxiong has set up an effective system for resettlement management from the upper to the bottom, all under the charge of leaders experienced of resettlement work. An effective set of rules and regulations are set up too.

4.2 Monitoring on Exact Resettlement Action Institutions

To strengthen the management of the Project, the People’s Government of Chuxiong has, subject to actual work needs, issued the *Notice by the People’s Government of Chuxiong to Adjust and Enlarge the ADB Loaned Construction Project* (C S Z T [2014] No.57) in 2014 which determines the upper-to-bottom management mode of the resettlement institutions. See Chart 4-1 for more details about the constituents and Table 4-1 about duties of each constituent.

Chart 4-1: Organizational Structure for Chuxiong Road Works

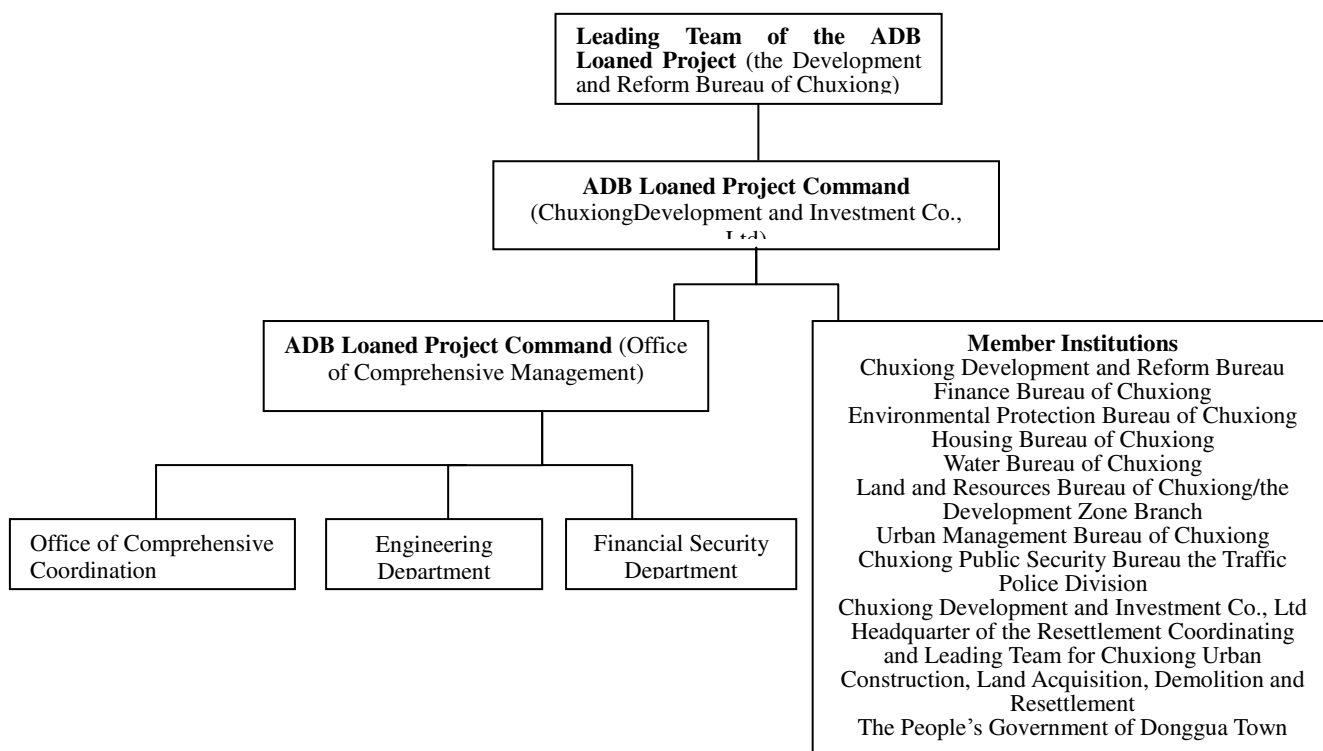


Table 4-1 Organizations for Chuxiong Road Work Project and Their Duties

Organization	Main Duties	Acted by/Title	Lead by
Leading Team of the ADB Loaned Construction Project	Organize to hold meetings concerning the ADB loaned construction project; facilitate and check effects and implementation of decisions made by the leading team and related work meetings; prepared significant reporting materials concerning the Project.	Mayor of Chuxiong/the leader	Yang Zhonghua
Command for construction of the ADB loaned Project	Responsible for coordination, monitoring, management, arrangements, organizing and implementation of the Project	Chuxiong Development and Investment Co., Ltd/the leader	Sun Congxiang
The government of Donggua Town	Responsible for ideological work to residents and villagers involved in the Project and resettlement of land-losing farmers; coordinate in land acquisition and demolition work.	Deputy chief of the People's Government of Donggua Town/the leader	Yang Shenhu
Village Committees	Participate in the survey on social, economic situation and impact of the Project; organize for public negotiation, publicize policies on land acquisition and demolition; organize agricultural and non-agricultural production and resettlement activities; report the opinions and suggestions of affected residents/villagers to the superior authority; provide assistance to poverty-stricken households involved in the Project	Directors of the village committees	Several

4.3 Measures to Strengthen Capability of Institutions

While setting up complete resettlement institutions, training to villagers/residents/staffs involved in the resettlement work is a must for the purpose of smooth implementation of the resettlement work. The training plan will be mad and implemented by the ADB Office of Chuxiong and the leading team of the ADB Loaned Project of Chuxiong. Following measures will be taken to make perfect the capability of resettlement institutions:

- A. Clearly define the scope of responsibility and duty of resettlement institutions at all levels; the resettlement institutions are made up various professional staffs and administrative officers, such staffs and officers shall possess related professional skills and management capability;
- B. Provide training to major staffs of resettlement institutions at regular intervals so that they can understand the resettlement policies of China and related requirements of the Asian Development Bank and thus their business skills and business handling capability can be enhanced;
- C. Provide sufficient guarantee in aspects of funds and equipments;
- D. Set up database and strengthen information feedback so that to guarantee unobstructed communication of information; the leading team is to made decisions on major issues if any;
- E. Strengthen the report system and the internal monitoring, solve identified problems if any, in time;
- F. Set up the external monitoring and evaluation mechanism, as well as the early warning system.

As of the current monitoring phase, the resettlement institutions of the Project have carried out several times of trainings. See Table 4-2 for more details.

Table 4-1 Business Training Schedule of the Resettlement Institutions

S/N	Training Organized By	Contents of Training	Trainee	Tim of Training
1	Office of the leading team for ADB loaned Project of Chuxiong	Study the experience of other provinces on resettlement work of ADB loaned projects	Members of the Project Team, leaders of related departments	Year 2013-2014
2	Command for construction of the ADB loaned Project of Chuxiong	Resettlement policies and principles of the Asian Development Bank	Members of the Project Team, leaders of related departments	December 2013
3	Command for construction of the ADB loaned Project of Chuxiong	Procedures and policies of resettlement work of the ADB loaned projects	Resettlement office of sub-districts (towns) and village-level resettlement teams	December 2013
4	Command for construction of the ADB loaned Project of Chuxiong	Land acquisition and demolition policies of China and the difference of such policies with those of the Asian Development Bank	Members of the Project Team, leaders of related departments, staffs	January 2014
5	Command for construction of the ADB loaned Project of Chuxiong	Computer operation and data processing	Members of the Project Team, leaders of related departments, staffs	March 2014
6	Command for construction of the ADB loaned Project of Chuxiong	Policies and practices of resettlement work	Resettlement office of Donggua Town, village-level resettlement teams	May 2014
7	Command for construction of the ADB loaned Project of Chuxiong	Lessons from resettlement work of similar projects	Staffs of the Project Office of Donggua Town	January 2015

5. Public Participation

Public participation of the Project is reflected as: a) Public participation in the preparatory stage of the Project; b) Public participation in the implementation stage of the Project. standards determining quality of public participation include: 1) Knowledge of the public about policies concerning land acquisition, demolition and resettlement; the more knowledge and the earlier understanding, of the public, indicate the higher public participation degree; 2) the voice of the public on policies concerning land acquisition, demolition and resettlement; the more voice of the public proves the higher degree of public participation contents for and ways of public participation are as follows: 1) negotiate; 2) announcements (publicize related policies via media and announcements); 3) participate in survey on physical losses and survey on social and economic conditions; 4) discuss on compensation standards; 5) choose the resettlement houses; 6) discuss different resettlement modes and make free choice; 7) choose employment ways; 8) make comments on the final use of the compensation fund for land acquisition.

Donggua Town, the place where the Project is located, is near to Chuxiong downtown, and residents here show relatively strong consciousness about their rights and interests and they are brave and good at safeguarding and struggling for their rights and interests. Thus, the Project has witnessed greatly high public participation. It is learned by the monitoring team that at the early implementation of the Stage, the 5 villages/communities under the administration of Donggua Town and affected by land acquisition of the Project have used the internet, newspaper and other media tools to publicize the significance and function of the Project.

As of the current monitoring phase, the external monitoring team has carried out survey among 30% of the affected population and the survey results show: 1) almost all the villagers/residents know the Project and hold the opinion that construction of the Project will benefit local development and they show active support to the Project; 2) almost all the affected population have their questions on the compensation standards, resettlement proposals, distribution and use of the compensation fund for land acquisition being replied and they are generally satisfied about the resettlement standards.

6. Work Arrangements for the Next Step

According to the progress of the Project, the resettlement work involved in the Project may be carried out in the middle of 2015. Thus, the external monitoring institution will, in the monitoring of the coming phase, monitor and report the resettlement work in a comprehensive and detailed way, the resettlement progress and the living and production recovery of the affected population will be reported too.