



# External Resettlement Monitoring Report

---

Project Number: 45507-003  
February 2015

## PRC: Yunnan Chuxiong Urban Environment Improvement Project - External Resettlement Monitoring Report (No. 1) for Lufeng Component

Prepared by Sichuan Fontal Strategic Consulting Co., Ltd

For Chuxiong Prefecture Project Management Office

This External Resettlement Monitoring Report is a document of the borrower. The views expressed herein do not necessarily represent those of ADB's Board of Directors, Management, or staff, and may be preliminary in nature.

In preparing any country program or strategy, financing any project, or by making any designation of or reference to a particular territory or geographic area in this document, the Asian Development Bank does not intend to make any judgments as to the legal or other status of any territory or area.

**Asian Development Bank**

**Asian Development Bank Loaned Chuxiong Urban  
Environmental Improvement Project Lufeng Sub-project**

**Resettlement External Monitoring Report  
(Phase I)**

**Sichuan Fontal Strategic Consulting Co. Ltd  
February 2015**

**Table of Contents**

1. Summary of Monitoring.....	2
1.1 Summary of the Project.....	2
1.2 Construction Progress.....	2
1.3 Summary of Resettlement Monitoring.....	2
1.4 Monitoring and Evaluation.....	2
2. Monitoring on Impacts of the Project.....	4
2.1 Planned Data of Impacts by the Project.....	4
3. Monitoring on Compensation Standards and Compensation Funds.....	5
4. Organizational and Public Participation.....	6
4.1 Organizational Structure.....	6
4.2 Work of the Monitoring Team and Public Participation.....	6
5. Work Arrangements for the Next Step.....	10

# **1. Summary of Monitoring**

## **1.1 Summary of the Project**

Lufeng urban environmental improvement project (the Project) is one of the sub-projects of the urban environmental improvement projects of Chuxiong Yi Autonomous Prefecture with loan from the Asian Development Bank. Contents of the Project consist of:

(i) East River and the West River embankment protection, landscaping, and flood early warning system; (ii) 7.5km urban roads and associated facilities, and a stormwater detention pond system; (iii) urban solid waste management equipment, including garbage compactor trucks, garbage collection vehicles and street sweeping vehicles; Total approved investment on the Project is CNY 1.013 billion as to the feasibility report, including USD 50.418 million (equal to CNY 307.5 million) loan from the Asian Development Bank (accounting for 30.35%) and supporting fund of CNY 705.8 million from domestic China (accounting for 69.65%). Construction of the Project will take 5 years according to the plan, from 2014 to 2018.

## **1.2 Construction Progress**

At present, procedures to be implemented in domestic China, including project approval, location planning, preliminary land reviewing, environmental appraisal, water protection, resettlement action plan and feasibility report, are finished. China National Intrimplex International Tendering Co., Ltd (CNIITC) is selected as the bidding agency by public bidding and business training has been made to the Project staff in June 2014. Employment of the construction supervising institution is made also by bidding and the winner is Yunnan Shengfa Engineering Construction Bid and Cost Consulting Co., Ltd; related geological survey report, preliminary design optimization and evaluation report, preliminary design proposals for approval and other related reviewing works are finished by now.

## **1.3 Summary of Resettlement Monitoring**

Land acquisition, demolition and resettlement works are involved in the river regulation, flood control and construction of roads for urban development and auxiliary facilities of the Lufeng sub-project. Payment for land acquisition and demolition is CNY 448 million according to the plan, anyway, the land acquisition and demolition work hasn't started officially yet. Chuxiong Geological Information Co., Ltd is entrusted to carry out statistics on the population, land area and ground attachments of villages affected by land acquisition and demolition. Land acquisition, house demolition, compensation and resettlement work involved in the Project will be implemented in the first quarter of 2015 according to the plan and related payment for resettlement has been included in the budget 2015.

## **1.4 Monitoring and Evaluation**

Sichuan Fontal Strategic Consulting Co., Ltd, entrusted by the ADB Project Office of Chuxiong Prefecture with the external independent monitoring and evaluation service on the Project, has prepared the independent monitoring and evaluation work plan which defines the scope, contents, monitoring indicators, working methods and time schedule of the external monitoring and evaluation service this time.

From December 14-19, 2014, the monitoring team arrived at Lufeng County affected by the Project to collect information for monitoring and evaluation. The team had fully learned the implementation progress of resettlement work there by ways of actively survey on public opinions and door-to-door interviewing with affected villagers, in

addition to the informal discussion with leaders of the affected towns and villages. Thus, opinions of affected population on resettlement work are learned and sufficient communication is realized.

## **2. Monitoring on Impacts of the Project**

### **2.1 Planned Data of Impacts by the Project**

Planned data of impacts by the Asian Development Bank (ADB) loaned Chuxiong Yi Autonomous Prefecture Urban Environmental Improvement Project Lufeng Sub-project are as follows: totally 1,130.89mu of collectively-owned land will be expropriated permanently, with 2,827 people from 663 households being affected directly; totally 33.8mu of land will be occupied temporarily, with 111 people from 35 households being affected; totally 3,292m<sup>2</sup> of houses will be demolished, with 120 people from 29 households being affected. 5 villages/communities of Jinshan Town, Lufeng County will be involved in the resettlement work.

Up to the monitoring of the current phase, the land acquisition and demolition work hasn't started yet and data of actual impacts will be reported in the coming monitoring phases.

### 3. Monitoring on Compensation Standards and Compensation Funds

The Notice by the Land and Resources Bureau of Yunnan Province as to Forward the Guideline of the Ministry of Land and Resources on the Determination of Uniform Annual Output Value Standard for Land Acquisition and Uniform Land Price of the Affected Area (YGTZG [2005] No.188) and the Uniform Annual Output Value for Land Acquisition and Compensation Standards for Ground Attachments of the Expropriated Land (trial) (LZT [2009] No. 105) issued by the People's Government of Lufeng County are applied here. Detailed compensation standards for land acquisition are as follows:

CNY 86,040/mu (CNY 129/m<sup>2</sup>) for rice land and CNY 86,040/mu for residence site;

Compensation standards for crops: CNY 1,200/mu for spring-summer crops and CNY 600/mu for winter-spring crops.

Compensation standards for demolished residential house: CNY 950/m<sup>2</sup> (brick-concrete structure), CNY 700/m<sup>2</sup> (brick-wood structure), CNY 450/m<sup>2</sup> (earth-wood structure), CNY 200/m<sup>2</sup> (simple structure), together with moving subsidy at the rate of CNY 2,000/household and temporary resettlement fund at the rate of CNY 5/m<sup>2</sup>/month for 12 months. Award for earlier moving is provided at the rate of CNY 3,000/household (30 days earlier than the expiration of proposed deadline).

Resettlement work of the Project hasn't started yet and the actually applied documents and compensation standards will be monitored, evaluated and reported after the official implementation of resettlement work.

## 4. Organizational and Public Participation

### 4.1 Organizational Structure

To actually strengthen administration of the ADB loaned project, push forward powerfully construction of the Project and enhance the use efficiency of the ADB loan, Lufeng County has set up the ADB loaned project command to fully take charge of the overall planning and coordination of the Project. Lufeng Urban Construction Investment and Development Co., Ltd is responsible for the implementation of the Project.

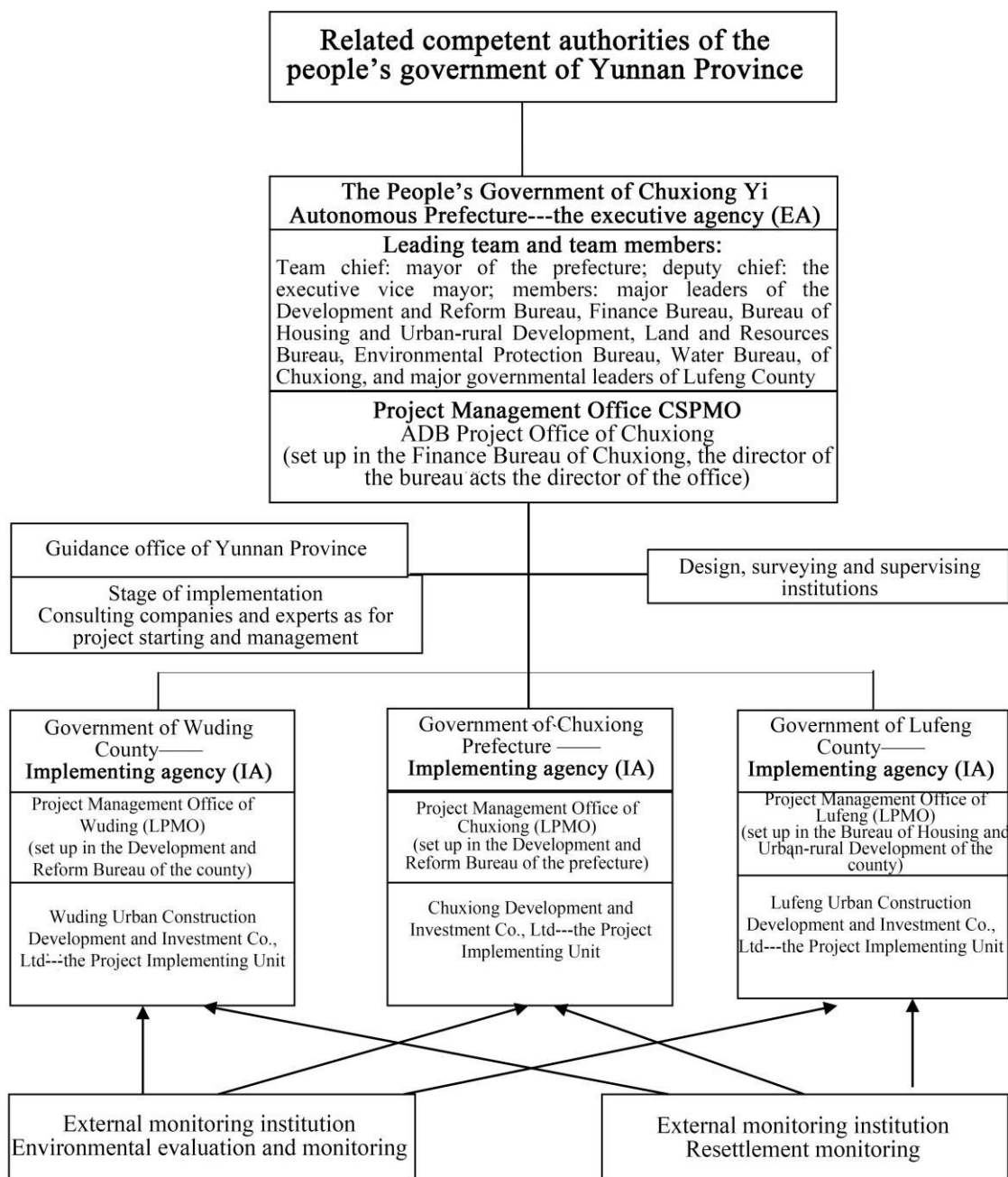


Figure 5-1 Organizational Chart of the ADB Loaned Chuxiong Project

### 4.2 Work of the Monitoring Team and Public Participation

Public participation of the Project is reflected as: a) Public participation in the preparatory stage of the Project; b) Public participation in the implementation stage of



the Project.

Standards determining quality of public participation include: 1) Knowledge of the public about policies concerning land acquisition, demolition and resettlement; the more knowledge and the earlier understanding, of the public, indicate the higher public participation degree; 2) the voice of the public on policies concerning land acquisition, demolition and resettlement; the more voice of the public proves the higher degree of public participation.

Contents for and ways of public participation are as follows: 1) negotiate and villager meeting; 2) announcements (publicize related policies via media and announcements); 3) participate in survey on physical losses and survey on social and economic conditions; 4) discuss on compensation standards; 5) choose the site to build the resettlement houses; 6) build new houses at the free will; 7) choose employment ways; 8) make comments on the final use of the compensation fund for land acquisition.

From December 14-19, 2014, the monitoring team went to the town/villages affected by the Project and carried out extensive public survey and door-to-door interviewing among affected households, for the purpose to learn the living and production situation of them before land acquisition and demolition and listen to their opinions and suggestions on resettlement and further publicize the Project among local villagers. Informal discussion and questionnaire were applied here, with 145 affected households (accounting for 21% of the total affected households) being involved as samples in the survey and questionnaire. See Table 4-1 for more details about the samples and Chart 4-2 for reference pictures about public participation and first-hand survey.

**Table 4-1 Distribution of Samples for Public Survey on the ADB Loaned Project of Lufeng**

Town	Village/community	Affected Households	Sampled Households	Sampling Proportion
Jinshan	Beichang	398	83	21%
	Guangwa	137	30	22%
	Beimen	48	10	21%
	Xinhe	95	19	20%
	Nanmen	14	3	21%
Total		692	145	21%





**Figure 4-2 Public Participation and Public Survey**

Statistical results of the sample survey show that generally, the informants acknowledge that the Project will bring positive effects to local traffic and living environment and benefit the state, the collective organization and individual residents; 78% of the informants support the Project. Although the Project is still in the preparatory stage, more than 66% local residents know it will be constructed here thanks to strong publicity. Meanwhile, local residents show their worry about the adverse impacts of land acquisition and demolition and they express their comments. See the following tables for results of the public survey.

**Are you clear that the Project will be constructed here and do you support?**

Clear about construction of the Project?	Population	Percentage	Do you support?	Population	Percentage
Not clear	14	10%	Yes	113	78%
Not so much clear	35	24%	No	0	0
Clear	96	66%	Whatever	32	22%

**How do you think the Project will influence your life?**

In which ways do you think the Project will influence your life?		Population	Percentage
Positive effects	The traffic will be more convenient	100	69%
	The living environment will be improved	87	60%
	More jobs will be available	34	23%
	The living standard will be enhanced	4	3%
Adverse effects	No adverse effects	42	29%
	Life and traveling will be impaired by construction of the Project	27	19%
	Economic loss from house demolition	48	33%
	Income will be reduced from land acquisition	60	41%

As for questionnaire on resettlement ways for land acquisition, multiple choices can be made. Some residents prefer combined resettlement ways, such as money-based resettlement + social security. Results of the single-item choice show that 30% of informants prefer social-security-based resettlement, while 54% prefer money-based resettlement and 23% prefer land-adjustment-based resettlement.

**What's your favorite resettlement way for land acquisition?**

Options	Population	Percentage
Money-based resettlement	79	54%
Land adjustment	33	23%
Social security	43	30%

Results of survey on resettlement ways for demolition show that 17% of the informants prefer monetary compensation, a great proportion of informants prefer centralized resettlement reaching 68%, while 22% prefer scattered resettlement.

**What's your favorite resettlement ways for demolition?**

Options	Population	Percentage
Monetary resettlement	25	17%
Scattered resettlement	22	15%
Centralized resettlement	98	68%

61% of the informants express that they are clear in certain degree about the resettlement policies, 29% are clear while 10% are unclear about the resettlement policies. 81% of the informants are willing to change their identity from a farmer to a citizen.

**Are you clear about the resettlement policies for land acquisition and demolition?**

Options	Population	Percentage
Clear	42	29%
Clear in certain degree	88	61%
Unclear	15	10%

**Are you willing to change your identity from a farmer to a citizen?**

Options	Population	Percentage
Willing	118	81%
Unwilling	19	13%
Whatever	8	6%

## **5. Work Arrangements for the Next Step**

Since the resettlement work of Lufeng Sub-project will be implemented (hasn't started yet) in a comprehensive way in 2015 according to the plan, the external monitoring institution will fully introduce the resettlement progress in the report of the next phase, the living and production recovery of the affected population will be another focus of the external monitoring and evaluation then. The report of the next monitoring phase will be submitted in the October 2015.