

Resettlement Framework

Document Stage: Draft for Consultation Project
Number: 51077-002

March 2018

MLD: Greater Male Environmental Improvement and Waste Management Project

Prepared by Ministry of Environment and Energy for the Asian Development Bank.

This draft Resettlement Framework is a document of the borrower. The views expressed herein do not necessarily represent those of ADB's Board of Directors, Management, or staff, and may be preliminary in nature. Your attention is directed to the "terms of use" section of this website.

In preparing any country program or strategy, financing any project, or by making any designation of or reference to a particular territory or geographic area in this document, the Asian Development Bank does not intend to make any judgments as to the legal or other status of any territory or area.

ACRONYMS

ADB	Asian Development Bank
CBO	Community Based Organization
EPA	Environmental Protection Agency
GAP	Gender Action Plan
GRC	Grievance Redressal Committee
GRM	Grievance Redress Mechanism
IWMC	Island Waste Management Centre
MLA	Maldives Land Act
MEE	Ministry of Environment and Energy
MOFT	Ministry of Finance and Treasury
NGO	Non-Governmental Organization
PMDSC	Project Management, Design and Construction Supervision Consultants
PSC	Project Steering Committee
SPS	Safeguard Policy Statement, 2009
WAMCO	Waste Management Corporation Ltd

Table of Contents

EXECUTIVE SUMMARY	v
I. INTRODUCTION	1
A. The Project	1
B. Project Objective and Components	3
C. Purpose of the Resettlement Framework	3
D. Scope of Land Acquisition and Resettlement	3
II. OBJECTIVES, POLICY FRAMEWORK AND ENTITLEMENTS	4
A. Legal and Policy Framework	4
B. ADB's Safeguard Policy Statement, 2009	6
C. Involuntary Resettlement Safeguard Principles for the Project	7
D. Eligibility and Entitlements	9
III. SOCIOECONOMIC INFORMATION	13
A. Surveys	13
B. Resettlement Plan Preparation	14
C. Gender Impacts and Mitigation Measures	14
IV. CONSULTATION, INFORMATION DISCLOSURE AND GRIEVANCES	14
A. Meaningful Consultation and Participation of Key Stakeholders	14
B. Information Disclosure and Resettlement Plan Disclosure	15
C. Grievance Redress Mechanism	15
V. COMPENSATION, INCOME RESTORATION AND RELOCATION	17
A. Compensation	17
B. Income Restoration and Relocation	18
VI. INSTITUTIONAL ARRANGEMENTS AND IMPLEMENTATION	18
A. Institutional Arrangements	18
B. Institutional Capacity	19
VII. BUDGETING AND FUND FLOW MECHANISM	20
VIII. IMPLEMENTATION SCHEDULE	20
IX. MONITORING AND REPORTING	21

List of Appendixes

1. Criteria for Planning and Design of Subprojects, Including Site Selection
2. Procedures for Screening and Due Diligence on Involuntary Resettlement Impacts
3. Involuntary Resettlement Impact Screening Checklist
4. Gap Analysis of Maldives Land Act, ADB Safeguard Policy Statement (2009) Requirements
5. Outline of a Resettlement Plan
6. Socioeconomic Survey of Households
7. Census Survey Questionnaire for Project Affected Families
8. Sample Monitoring Indicators
9. TOR for Independent Third Party for Negotiated Purchase or Voluntary Land Donation
10. Sample Certification Formats
11. Sample Grievance Registration Form
12. Suggested Resettlement Information Leaflet

EXECUTIVE SUMMARY

- 1. The Project.** The Greater Male Environmental Improvement and Waste Management Project (the Project) will establish an integrated solid waste management system in Greater Male including collection, transfer, treatment using advanced waste-to-energy technology, disposal, recycling, dumpsite closure and remediation, public awareness in reduce-reuse-recycle, and strengthen institutional capacities for service delivery and environmental monitoring. The scope includes the following components: (i) improved waste collection and transfer in Greater Malé, (ii) improved dumpsite management and logistics on Thilafushi Island, (iii) improved outer island waste management systems; outer islands defined as those inhabited islands outside the Greater Malé region. (iv) strengthened institutional capacity of Waste Management Corporation Limited (WAMCO), (v) awareness campaign and behavior change, and (vi) project management, design, and supervision support for the project management unit (PMU). The total estimated base cost is \$30.45 million. The project will be funded through a grant from Asian Development Bank (ADB). A separate follow-on ADB project in 2019 will include the regional waste management facility including waste-to-energy plant and dumpsite rehabilitation, subject to availability of land.
- 2. The Resettlement Framework.** This Resettlement Framework reflects the principles and procedures found in the national legal enactments and policies in Maldives related to social safeguards that need to be addressed in the project and ADB Safeguard Policy Statement (SPS) requirements. The project does not expect to have any significant impact due to land acquisition and involuntary resettlement under any component and also in all selected islands for the project. According to the Maldives Land Act (MLA), lands belong to the Government of Maldives and it is very rare that private land will be acquired for subprojects. However, as subprojects under Output 2 will be prepared after Board approval, if there is any land acquisition or involuntary resettlement for such subprojects, the Executing Agency will be responsible for preparing resettlement plans per this framework and submit to ADB for review and approval prior to contract awards.
- 3.** As per the ADB SPS, baseline socioeconomic surveys, census, inventory of losses and valuation of assets, and collection of qualitative data is required. These data will help to prepare resettlement plans, gender empowerment and social inclusion plan, poverty reduction strategies, and plans for indigenous peoples and vulnerable groups, as needed. In addition, the Resettlement Framework focuses on consultation, information disclosure and grievance redress mechanism for the project. The proposed grievance redress committee of the project is headed by the Chairman of the Island Council or City Council while representatives include four members from the community.
- 4.** Capacity development related to social safeguards focuses on all project staff at the Executing Agency, PMU and WAMCO project staff and the senior management staff. The goal of capacity development program is to ensure the smooth function of project social safeguards requirements and establish a satisfactory participation of stakeholders in subproject activities while ensuring project sustainability.
- 5.** Finally, the Resettlement Framework suggests necessary institutional arrangements and monitoring requirements of the project including key monitoring indicators.

I. INTRODUCTION

1. This Resettlement Framework has been prepared for the Greater Malé Environmental Improvement and Waste Management Project as required under ADB's sector lending modality. The Resettlement Framework describes the objectives, policy principles and procedures for land acquisition and involuntary resettlement, if any, compensation and other resettlement assistance measures and method for preparation of additional subprojects under the Loan. According to the Maldives Land Act (MLA), land belongs to the Government of Maldives and it is very rare that private land will be acquired for subprojects. However, as subprojects under Output 2 will be prepared after Board approval, if there is any land acquisition or involuntary resettlement for any of such subprojects, the Executing Agency will be responsible for preparing resettlement plans per this framework and submit to Asian Development Bank (ADB) for review and approval prior to contract awards.

A. The Project

2. The Maldives has a total population of around 341,256 with 35% of the total population living in the capital city of Malé. The Government of Maldives is committed to improve the environmental conditions of the country and strengthen its solid waste management (SWM) and requested support from ADB to implement the "*Greater Male Environmental Improvement and Waste Management Project*" ("the Project"). The Project aims to improve the critical situation of Thilafushi dumpsite and strengthen SWM in Zone 3¹, which covers Greater Male' (Male', Villingili & Hulhumalei including inhabited islands in Kaafu, AlifuAlifu, AlifuDhaalu and Vaavu atolls.

3. Zone 3 population is approximately 216,000, distributed over 32 islands, 73 tourist resorts, 14 city hotels, and 177 guest houses, and expected to grow to 300,000 in the next five years. Atolls included in Zone 3 are: Kaafu, Alifu, Alifu Dhaalu and Vaavu. Solid waste generation from domestic, institutional, commercial and industrial activities is 75,000 tons per year and projected to reach 115,000 tons per year by 2022. Construction and demolition (C&D) waste generation is also estimated to be 70,000 to 100,000 tons per year. Male's overburdened dumpsite on Thilafushi island is creating significant environmental and public health hazards with negative impacts on residents and surrounding resorts. So, the Government and ADB agreed to prioritize and provide immediate actions to address the nuisances of smoke, smell, and flies on Thilafushi.

4. The Government will implement the Project in two phases: (Phase 1) identify feasible quick-fix solutions to control nuisances of Thilafushi Island dumpsite, manage incoming waste on Thilafushi Island, provide equipment for island waste management centers, and install an appropriate transfer and collection system in Malé and islands/resorts; (Phase 2) rehabilitate the existing dump site, implement a long-term comprehensive waste management strategy for Zone 3 including, treatment, disposal, and reduce-reuse-recycle (3R). The waste management strategy will consider advanced treatment options including waste-to-energy. The Project will include facilities such as air pollution control residue (fly ash) landfill, a bottom ash processing plant integrated with C&D waste facility, a recycling center and an end-of-life vehicle dismantling plant which will be located on the same site on Thilafushi.

5. The project will have three outputs: (a) Waste collection, transfer, and disposal systems improved and made climate and disaster resilient; (b) Community-based outer island waste management systems targeting poor and women enhanced; and (c) Institutional capacity and public awareness in sustainable waste management strengthened.

¹ Solid Waste Management in Maldives was divided into seven zones.

6. Output 1: Waste collection, transfer, and disposal systems improved and made climate and disaster resilient. This will include (i) an efficient waste collection strategy designed and applied in Malé and Hulhumalé in consultation with local communities targeting women; (ii) waste collection and transport equipment (trucks, bins, containers) for Malé, Hulhumalé and Villimalé provided; (iii) transfer stations in Malé and Villimalé constructed and transfer station in Hulhumalé designed; (iv) C&D waste processing plant and end of life vehicle dismantling workshop constructed; (v) waste vessel harbor at Thilafushi rehabilitated; (vi) three vessels for waste transport from outer islands to Thilafushi provided; (vii) heavy equipment (bulldozers, excavators, roll trucks) for controlled dumpsite management at Thilafushi provided; and (viii) construction of two administrative buildings for WAMCO at Malé transfer station and Thilafushi waste vessel harbor. All facilities designed will consider climate change and disaster resilient features.

7. Output 2: Community-based outer island waste management systems targeting poor and women enhanced.² This output will provide comprehensive support to strengthen sustainable solid waste management in poor outer island communities. It includes (i) a minimum of 22 island waste management centers (IWMCs) with processing equipment (balers, glass crushers, metal presses) developed or upgraded in consultation with community targeting women and incorporating climate and disaster risk measures;³ (ii) collection equipment for outer islands (bins, refuse collection vehicles, dump trucks) provided; (iii) capacity building of eligible island councils targeting women in waste collection, segregation, composting, recycling, and O&M; and (iv) community awareness and behavior change campaigns in 3R targeting women in outer islands delivered. As subprojects under Output 2 will be prepared after Board approval, each island is required to meet minimum eligibility and selection criteria, including safeguards, to receive IWMC support under the project.⁴ The criteria is intended to ensure sustainability and is outlined in the Project Administration Manual.⁵ Output 2 will be partially funded by a Trust Fund grant focusing on poverty reduction, which will support islands in the following areas:⁶ (i) IWMCs constructed in a minimum of 11 eligible islands, (ii) skills and capacity building in eligible islands targeting women provided, and (iii) awareness campaigns in 3R delivered in all outer islands.⁷

8. Output 3: Institutional capacity and public awareness in sustainable waste management strengthened. This will include (i) capacity building support to eligible WAMCO staff (at least 50% eligible women staff) in waste collection and disaster risk management

² There are 32 outer islands in the project area eligible for support under Output 2.

³ Out of 32 outer islands, some have existing facilities but are not operational due to inadequate design and insufficient equipment which would be upgraded under the project.

⁴ All 32 outer islands will be screened through the selection criteria outlined in the project administration manual and environmental assessment review framework (accessible from the list of linked documents in Appendix 2 of the report and recommendation of the President). Appraisal and safeguard reports will be approved by ADB prior to start of any project-related physical activities. Subprojects having resettlement impacts will not be included. Non-eligible islands will still receive awareness building support under the project. IWMCs consist of concrete platforms, small covered sheds, segregated waste processing and storage areas, small office, fencing.

⁵ Project administration manual (accessible from the list of linked documents of the report and recommendation of the President).

⁶ Additional selection criteria for Trust Fund supported islands includes climate change vulnerability, and women participation in island councils, and is outlined in the Project Administration Manual (accessible from the list of linked documents in Appendix 2 of the report and recommendation of the President).

⁷ Upon confirmation from the government and the approval of Trust Fund.

provided;⁸ (ii) public awareness and behavior change campaigns in 3R targeting the poor and women in Greater Malé delivered;⁹ and (iii) project management, design, and supervision consultant support provided.

B. Project Objective and Components

9. The overall project will fill infrastructure gaps in solid waste collection, transfer, disposal, and treatment; and provide public awareness programs to promote 3R behaviors and improve willingness to pay for improved waste services. Activities will promote leadership roles for women in community sanitation programs. An attached technical assistance will strengthen institutional capacities of WAMCO for sustainable service delivery and of EPA for environmental monitoring of environmental pollution. Engineering designs will consider the risks of sea-level rise from climate change as well as natural disasters such as tsunamis and extreme climate events.

10. The Project components are (i) improved waste collection and transfer in Greater Male, (ii) improved dumpsite management and logistics on Thilafushi Island, (iii) improved outer island waste management systems: Outer islands defined as inhabited islands outside the Greater Male region. (iv) strengthened institutional capacity of WAMCO, (v) awareness campaign and behavior change, and (vi) project management, design, and supervision support for PMU.

11. In achieving these targets, the Project aims to avoid land acquisition and resettlement impacts to a maximum possible extent. Thus, the Project will adopt the following resettlement criteria in the selection of subproject sites: (i) sufficient and adequate government land is allocated on island (as required by IWMC design); and (ii) there is no private land acquisition and/or physical displacement, livelihood loss, or temporary impacts.

C. Purpose of the Resettlement Framework

12. The Resettlement Framework has been formulated based on (i) ADB's SPS and laws, policies, and regulations of the Government of Maldives. The Resettlement Framework provides guidance on how to formulate satisfactory resettlement plans (if required) for each subproject identified under the project in accordance with the ADB's SPS. The Resettlement Framework(i) explains the general resettlement impacts of project components; (ii) specifies requirements for subproject screening, categorization, assessment, and social impact assessment and census, resettlement planning, including arrangements for stakeholder consultation and information disclosure; (iii) outlines objectives, policy principles, and procedures for land acquisition, compensation at replacement cost, and other assistance measures for affected persons; (iv) assesses adequacy of executing agency capacity to implement resettlement plans; and (v) describes implementation aspects and procedures of an resettlement plan including a resettlement budget, institutional capacity development, monitoring and reporting requirements. As subprojects under Output 2 will be prepared after Board approval, this resettlement framework was prepared to ensure that any involuntary resettlement impact will be addressed

D. Scope of Land Acquisition and Resettlement

⁸ Disaster risk management capacity building will include preparation of a SWM disaster action plan outlining prevention, preparedness, response and recovery tasks. DRM risk awareness activities will include first responders (police, fire fighters) on Thilafushi.

⁹ Public awareness and behavior change activities under Outputs 2 and 3 will be implemented through a Public Awareness and Community Capacity Building consultant recruited by the PMU.

13. The project is not expected to have significant impact due to land acquisition and involuntary resettlement. Based on due diligence by the project team, no permanent impact such as land acquisition, physical displacement, livelihood loss, or temporary impact is identified in the project areas. Thus, the project is categorized as C for involuntary resettlement. All civil works under Output 1 are proposed within available land belonging to the government. The government will initially provide written certification of land ownership, to be followed by land records for project sites. Consultations with surrounding landowners / users / communities if any, around project sites will be conducted and documented. For Output 2, site selection criteria were agreed, requiring no development on private land, physical displacement, livelihood loss, or temporary impacts (Appendix 1). For Output 2, due diligence is conducted only for 1 IWMC. For the remaining IWMCs for which sites are yet to be identified, resettlement framework is prepared to guide the preparation of safeguard documents.

II. OBJECTIVES, POLICY FRAMEWORK AND ENTITLEMENTS

A. Legal and Policy Framework

14. Under the legal framework, a summarized description on most relevant enactments related to social safeguards is explained as follows.

1. Constitutional Guarantees

15. The first written Constitution of Maldives was adopted on 22 December 1932. Since then, there were seven Constitutions created in the years 1932, 1942, 1953, 1954, 1968, 1997 and 2008. The current Constitution came into force on 7 October 2008.

16. The Constitution is the supreme law of the land. Article 268 of the Constitution provides as follows:

- (a) All laws of the Maldives must be enacted in accordance with this Constitution. Any law or part of any law inconsistent with this Constitution is, to the extent of its inconsistency, void and of no force and effect. The obligations imposed by this Constitution must be fulfilled. Any conduct contrary to this Constitution shall be invalid.
- (b) The Constitution of Maldives guarantees fundamental rights and freedom to all persons in the Chapter II of the Constitution.

17. Furthermore, the Constitution of Maldives provides for powers, obligations and duties of the Parliament, the President and the Judiciary. It also provides the functions and mandates of the Constitutional Bodies, those tasked to run the State smoothly and uphold the Constitution.

2. Local Councils

18. Under 230 (a) of the Constitution, the administrative division of the Maldives shall be administrated decentrally. Schedule II of the Constitution provides a list of the administrative divisions (known as "Atolls") in the Maldives. By virtue of Article 230 (b) of the Constitution, the President has the power to create Constituencies, posts, Island Councils, Atoll Councils and City Councils. The Decentralization Act (Law N0.7/2010) provides for three types of local authorities in the Maldives namely; (a) Atoll's Councils (section 6), (b) Island's Council (section 21) and (c) City's Council (section 39).

3. Maldivian Land [Acquisition] Act

19. The 2008 Constitution vests all land in the State and bans foreign ownership of land. It is understood that Government is reviewing land-related legislation to align it with the constitution and current development policy. Meanwhile, matters relating to land are governed by the provisions of the Maldivian Land Act (MLA) and Regulations of 2002, as subsequently amended.

20. Section 4 of the Act provides the several purposes and uses of lands in the country. They are for:

- (i) construction of households and buildings for residential purposes,
- (ii) commercial use,
- (iii) social use,
- (iv) environmental protection, and
- (v) government use.

21. As per the MLA, land belonging to the island council or city council can be used for government purposes and such lands can be transferred to the relevant Ministry with the permission of Ministry of Housing, Department of Surveys, and respective island council or city council.

22. Under the Act, all Maldivian citizens who do not have a place of residence are entitled to a parcel of land for residential purposes, entitled a "state dwelling". Such parcels are issued by the respective Atoll office and must not exceed 4,000 ft² (372 m²). The parcel is forfeited if not developed ("settled") within five years. State dwellings are heritable and divisible, down to no smaller than 600 ft² (56 m²).

23. State dwellings can be privatized by purchase from the government. Conversion to non-residential purposes is possible subject to compliance with land use policy, and a permit. Sales of private land draws a 15% tax.

24. Buildings, trees and other assets on land belong to the owner of the land or official user of the land, unless third-party ownership can be proven under Shari'ah.

25. Land for agriculture is allocated to residents by island administrations on an annual renewable basis. The land remains government property. No rent is paid, but the plots are generally small and the system provides little security or incentive to invest in and improve the land. When land is required for public projects, it is understood that the legal owner or registered user is compensated on a land-for-land basis, with fixed assets being paid for at fair market price.

26. According to a recent President's Office Press Release (Ref. No. 2011-374), the Cabinet has decided to establish the Maldives Land and Survey Authority (the Authority). The Authority will conduct surveys; collect and update information on the most beneficial use of lands, lagoons and reefs of the Maldives; and formulate and implement cadastral survey standards.

4. Land Use Planning and Management and Traditional Rights to Land

27. Land management on inhabited islands (apart from the capital island, Malé) comes under the purview of the Ministry of Atolls Development (MOAD). Land use planning of inhabited islands is guided by the Ministry of Planning and National Development (MPND) and Ministry of Housing and Infrastructure (MOHI). Land allocations and registrations are finalized by the MOAD with

consultations and necessary approvals from both the MPND and the MOHI and sometimes also from line ministries. There are no traditional governance structures in the Maldives for coastal land and resource use. However, local island and atoll offices play a major role in the planning stages of land allocation and management on their respective islands. Locally formed and selected Island Development Committees and Atoll Development Committees play a critical advisory role in land management on inhabited islands.

28. A large proportion of uninhabited islands are managed under a traditional system called *Varuvaa*. Under the *Varuvaa* system land is leased out to individuals not to undertake major economic activities, but to obtain benefits from the island in terms of the coconuts they generate from the islands. However, lessees undertake annual crop cultivation on islands where cleared agricultural land is available. The land tenure systems on inhabited islands are complex. Homestead plots are given free of charge. Plot sizes depend on the availability of land, with an average size of 50 x 100 feet. Trees grown on homestead plots belong to the owner and the homestead allotment is inheritable. *Goi* land refers to a particular area of the inhabited island with special vegetative characteristics. Coconut palms and tree species grown on *Goi* land belong to the government. *Goi* land is rented to the highest bidder by the Ministry of Atolls Development. The lessee rents smaller plots for farming. In general, the lessee gets 12.5 % of the income generated by farmers. *Faalabba* is a land area generally located close to residential areas. Islanders grow coconut palms and tree species with the permission of the Island Office. Half of the trees grown belong to the person who planted them and the other half is the property of the state. Most islands have communal land for the cultivation of annual crops. No rent is charged for cultivation on this land and no standard regulation exists for its use. On some islands plots change hand every year, whereas on other islands farmers can hold the plots as long as they continue cultivation.

29. Although the land tenure system is complex in the Maldives, this will have little implications on the project, as all activities will be undertaken by the PMU and EA. However, close coordination with Island Councils is expected for the effective implementation of project activities.

B. ADB's Safeguard Policy Statement, 2009

30. The objectives of ADB's SPS (2009) with regard to involuntary resettlement are to:

- (i) Avoid involuntary resettlement wherever possible;
- (ii) Minimize involuntary resettlement by exploring project and design alternatives;
- (iii) Enhance, or at least restore, the livelihoods of all displaced persons in real terms relative to pre-project levels; and
- (iv) Improve the standards of living of the displaced poor and other vulnerable groups.

31. The SPS of ADB covers both physical displacement (relocation, loss of residential land, or loss of shelter) and economic displacement (loss of land, assets, access to assets, income sources, or means of livelihoods) as a result of; (i) involuntary acquisition of land, or (ii) involuntary restrictions on land use or on access to legally designated parks and protected areas. It covers displaced persons whether such losses and involuntary restrictions are full or partial, permanent or temporary. The three important elements of ADB's SPS are: (i) compensation at replacement cost for lost assets, and livelihood and income restoration prior to displacement; (ii) assistance for relocation, including the provision of relocation sites with appropriate facilities and services; and (iii) rehabilitation assistance to achieve at least the same level of well-being with the project as without it. The SPS gives special attention to poor and vulnerable households to ensure their improved well-being as a result of project interventions.

32. The Land Acquisition Act is the primary legal framework for all land acquisition, compensation determination and relocation of affected persons in Maldives. The Act has a limited scope in resettlement and rehabilitation of affected persons.

33. Considering the differences between the laws, regulations and guidelines of the Government of Maldives and the safeguard policies of ADB, a detailed gap analysis has been conducted and is attached as Appendix 4. This Resettlement Framework addresses the identified gaps, mainly through provisions in the entitlement matrix.

C. Involuntary Resettlement Safeguard Principles for the Project

34. The Maldives laws and regulations on land acquisition and ADB's SPS will form the basic principles for the Project which will include the following elements:

- (i) Screen the project early on to identify past, present, and future involuntary resettlement impacts and risks. Determine the scope of resettlement planning through a survey and/or census of displaced persons, including a gender analysis, specifically related to resettlement impacts and risks.
- (ii) Carry out meaningful consultations with affected persons, host communities, and concerned nongovernment organizations (NGOs). Inform all displaced persons of their entitlements and resettlement options. Ensure their participation in planning, implementation, and monitoring and evaluation of resettlement programs. Pay particular attention to the needs of vulnerable groups, especially those below the poverty line, the landless, the elderly, the disabled, women and children, and indigenous peoples, and those without legal title to land, and ensure their participation in consultations. Establish a grievance redress mechanism (GRM) to receive and facilitate resolution of the affected persons' concerns. Support the social and cultural institutions of displaced persons and their host population. Where involuntary resettlement impacts and risks are highly complex and sensitive, compensation and resettlement decisions should be preceded by a social preparation phase.
- (iii) Improve, or at least restore, the livelihoods of all displaced persons through (i) land-based resettlement strategies when affected livelihoods are land based where possible or cash compensation at replacement value for land when the loss of land does not undermine livelihoods, (ii) prompt replacement of assets with access to assets of equal or higher value, (iii) prompt compensation at full replacement cost for assets that cannot be restored, and (iv) additional revenues and services through benefit sharing schemes where possible.
- (iv) Provide physically and economically displaced persons with needed assistance, including the following: (i) if there is relocation, secured tenure to relocation land, better housing at resettlement sites with comparable access to employment and production opportunities, integration of resettled persons economically and socially into their host communities, and extension of project benefits to host communities; (ii) transitional support and development assistance, such as land development, credit facilities, training, or employment opportunities; and (iii) civic infrastructure and community services, as required.
- (v) Improve the standards of living of the displaced poor and other vulnerable groups, including women, to at least national minimum standards. In rural areas provide them with legal and affordable access to land and resources, and in urban areas provide them with appropriate income sources and legal and affordable access to adequate housing.

- (vi) Develop procedures in a transparent, consistent, and equitable manner if land acquisition is through negotiated settlement to ensure that those people who enter into negotiated settlements will maintain the same or better income and livelihood status.
- (vii) Ensure that displaced persons without titles to land or any recognizable legal rights to land are eligible for resettlement assistance and compensation for loss of nonland assets.
- (viii) Prepare a resettlement plan elaborating on displaced persons' entitlements, the income and livelihood restoration strategy, institutional arrangements, monitoring and reporting framework, budget, and time-bound implementation schedule.
- (ix) Disclose a draft resettlement plan, including documentation of the consultation process in a timely manner, before project appraisal, in an accessible place and a form and language(s) understandable to affected persons and other stakeholders. Disclose the final resettlement plan and its updates to affected persons and other stakeholders.
- (x) Conceive and execute involuntary resettlement as part of a development project or program. Include the full costs of resettlement in the presentation of project's costs and benefits. For a project with significant involuntary resettlement impacts, consider implementing the involuntary resettlement component of the project as a stand-alone operation.
- (xi) Pay compensation and provide other resettlement entitlements before physical or economic displacement. Implement the resettlement plan under close supervision throughout project implementation.
- (xii) Monitor and assess resettlement outcomes, their impacts on the standards of living of displaced persons.

35. This framework and resettlement procedural guidelines shall apply to all subprojects under the loan so as to ensure that persons affected by land acquisition and/or involuntary resettlement will be eligible for appropriate compensation and rehabilitation assistance.

36. ADB's Involuntary Resettlement Impact Screening/Categorisation Checklist will be adopted for the subproject. Screening will be conducted immediately after identification of project site. If the screening is done simultaneously when the project site is being identified, then the magnitude of impacts can be estimated and if required alternative options can be examined. This will be done by the Project Management, Design and Construction Supervision Consultants (PMDSC) Environment Safeguard Expert who will also be responsible for social safeguards and submitted to PMU. Based on the ADB's Operational Manual Section F1/Operational Procedures¹⁰ the following criteria for screening and categorization of subprojects will be followed:

- (i) **Category A.** A proposed project is classified as category A if it is likely to have significant involuntary resettlement impacts. A resettlement plan, including assessment of social impacts, is required.
- (ii) **Category B.** A proposed project is classified as category B if it includes involuntary resettlement impacts that are not deemed significant. A resettlement plan, including assessment of social impacts, is required.
- (iii) **Category C.** A proposed project is classified as category C if it has no involuntary resettlement impacts. No further action is required.
- (iv) **Category FI.** A proposed project is classified as category FI if it involves the investment of ADB funds to, or through, a financial intermediary.

¹⁰ Issued on 1st October 2013

37. All subprojects identified with significant¹¹ or marginal resettlement impacts require preparation of resettlement plans and approval from ADB prior to award of contracts for that subproject. If a subproject has no impact, a due diligence report (DDR) will be submitted confirming the same and also stating reasons for the same. The resettlement plans/DDR must comply with ADB's SPS-2009. A DDR outline is provided in Appendix 5.

38. **Negotiated Settlement:** If necessary, land and other assets will be purchased through a negotiated settlement wherever possible. The Executing Agency will ensure adequate and fair price for land and other assets through meaningful consultation with affected persons, including those without legal title to assets. Any negotiation with displaced persons will openly address the risks of asymmetry of information and bargaining power of the parties involved in such transactions. An independent external party will be engaged to document the negotiation and settlement processes. The Executing Agency will agree with ADB on consultation processes, policies, and laws that are applicable to such transactions; third-party validation; mechanisms for calculating the replacement costs of land and other assets affected; and record-keeping requirements.

39. **Land donation.** For a project that directly benefits communities, land may be voluntarily donated to the project. In the Project, land¹² donation wherein the community or affected person agrees to donate a part of their land for the project an external party will be engaged to ensure and validate these requirements: (i) The donation will not cause significant impacts on the livelihood of the donor(s); (ii) the donor is fully understood on the value of their donated land(s) and that, had it not been donated, the land will be compensated under the project; (iii) the donation does not come from the land owner categorized as poor or vulnerable family; (iv) the donation will not cause any economic or physical displacement of the renters, tenant and other types of current land users; (v) the land donor(s) will get direct benefits from the proposed project activities; (vi) meaningful consultations are conducted with the land owner(s); and (vii) the land donation(s) does not come from coercion or asymmetrical power relation between the land owner(s) and the government. The above information must be included in a due diligence report to be prepared by an external party, preferably from reputed and qualified NGO, for ADB review and approval. The land transfer and updated records of the donated lands will have to be completed/obtained prior to the start of civil works.

D. Eligibility and Entitlements

1. Eligibility

40. The following displaced persons are eligible for compensation, assistance, and benefits. All persons described in the definition of a family will be also eligible for assistance/compensation in addition to those mentioned in this section. Eligible persons include:

- (i) persons who will lose land/assets/income in their entirety or in part, who have formal legal rights to the land;

¹¹ Source: Asian Development Bank Operations Manual –Operational Procedure on Involuntary Resettlement Involuntary Resettlement Category A: Significant means 200 or more affected people will experience major impacts, which are defined as (i) being physically displaced from housing, or (ii) losing 10% or more of their productive assets (income generating). Involuntary Resettlement Category B: Not Significant include involuntary resettlement impacts that are not deemed significant as per the ADB Operational Manual Involuntary Resettlement Category C: No involuntary resettlement impacts. A resettlement plan is required in case of both category A and B project.

¹² Including other types of assets attached to the land.

- (ii) persons who will lose the land they occupy in its entirety or in part who have no formal legal rights to such land, but who have claims to such lands that are recognized or recognizable under national laws, e.g. tenants and leaseholders;
- (iii) persons occupying land over which they neither have legal title, nor have claims recognized or recognizable under national law e.g. sharecroppers, squatters, encroachers, wage labor without formal contracts; and
- (iv) vulnerable households.¹³

41. Compensation eligibility is limited by a cut-off date. The cut-off date for non- title-holders, is the date of the start of the census survey. The date of formal notification of land acquisition will be the cut-off date for all titleholders losing land and structures.

2. Entitlements

42. The entitlement matrix (EM) summarizes the main types of potential losses and corresponding entitlements, which reflect the Maldives laws and regulations, and ADB’s SPS. The standard of entitlements listed in the entitlement matrix will not be lowered, but could be enhanced when resettlement plans are formulated based on the approved Resettlement Framework. The detailed Entitlement Matrix is described in Table 1.

43. Damages/unanticipated losses caused during construction, if any will be eligible for compensation. Unanticipated losses, if any, will be mitigated/compensated as per the Entitlement Matrix of this resettlement framework.

Table 1: Entitlement Matrix

Type of Impact/Loss	Nature of Ownership	Type of Loss	Compensation Entitlements ^a
LOSS OF LAND			
Agricultural/ Commercial /Residential land	Titleholders and customary or usufruct right holders	Permanent	1. Land-for-land compensation of equal productivity/commercial value, with all fees, taxes, registration charges and other costs incurred for replacement borne by the Project; OR Cash compensation at replacement cost ^b or open market value of land, including all transaction costs, such as applicable fees and taxes: 2. One-time cash assistance (MVR 10000) towards land development charges in case of agricultural/commercial land. 3. One-time subsistence allowance based on minimum wage rate per day for 6 months.

¹³ Vulnerable groups those below the poverty line, the landless, the elderly, the disabled, women and children, indigenous peoples, and those without legal title to land. The Vulnerability and Poverty Assessment 2004 of the National Bureau of Statistics, Government of Maldives used a “low” poverty line of Rf10 and a “high” poverty line of Rf15 per person per day to characterize the income poor.

Type of Impact/Loss	Nature of Ownership	Type of Loss	Compensation Entitlements ^a
	Tenants, leaseholders and sharecroppers	Permanent	<ol style="list-style-type: none"> 1. Cash assistance based on 3 months' income from land 2. Reimbursement for unexpired lease/advance rent, if any 3. Assistance to find new land 4. This provision is also applicable to tenants of the negotiated land settlement.
	Non-titleholder	Permanent	No compensation for loss of land. Subsistence cash allowance based on 3 months' income from lost plot
Partial loss of land – Less than 10% of the total holding	Titleholders and customary or usufruct right holders	Permanent	<ol style="list-style-type: none"> 1. Cash compensation at replacement cost or open market value of land, including all transaction costs, such as applicable fees and taxes 2. One-time subsistence allowance to cushion immediate loss, computed on the basis of minimum wage rate for 3 months.
LOSS OF STRUCTURE			
Residential / Commercial / Other	Titleholder/ Non-titleholder	Permanent	<ol style="list-style-type: none"> 1. Cash compensation for the affected structure at replacement cost 2. One-time shifting grant for transportation of building materials and other belongings. 3. Structure to be demolished only after new structure has been constructed or at least six months' notice to demolish the existing house 4. Right to salvage material from structure
	Tenants/ leaseholders	Permanent	<ol style="list-style-type: none"> 1. Reimbursement of unexpired lease/advance rent 2. Free transport facility or shifting assistance (one-time payment) 3. Replacement cost of assets created by lessee/tenant 4. Right to salvage material from structure created by lessee
LOSS OF COMMON PROPERTY RESOURCES			
Loss of cultural and community structures/ facilities	Community	Island Councils or City Councils	<ol style="list-style-type: none"> 1. Before initiating any civil work, local community will be consulted to ensure that access to private or community property is maintained. 2. Civil works plan will be shared with the local community. 3. Structures/facilities should be replaced if it is permanently affected by the project
OTHER IMPACTS			
Loss of crops and trees or any improvements made – private/community	Titleholder/ Tenant/ Leaseholder/ Sharecropper/ Non-titleholder/community		Cash compensation at replacement cost

Type of Impact/Loss	Nature of Ownership	Type of Loss	Compensation Entitlements ^a
Loss of source of livelihood	Affected Person	Permanent	<ol style="list-style-type: none"> 1. Cash compensation equivalent to income lost for one year 2. One-time cash grant for economic rehabilitation of MVR10,000 3. Affected persons will be eligible for income restoration training for self-employment (one person per family) 4. The executing agency/implementing agency would prepare specific plan for livelihood restoration for each affected person that would include training, assessment of vulnerability and any other measures.
	Affected Person	Temporary	Cash compensation equivalent to duration of income loss
Loss of access	Individual households or group of households		Before initiating any civil work, local community will be consulted to ensure that access to private or community property is maintained. Civil works plan will be shared with the local community.
Vulnerable ^c Affected Persons			Rehabilitation assistance for affected persons categorized as vulnerable in form of cash assistance to purchase income generating equipment ^d (limit of Rf15000) OR acquire skill training of their choice and job placement.
Unanticipated impacts			<ol style="list-style-type: none"> 1. To be determined in accordance with the IR safeguards requirements of the ADB SPS and project resettlement framework 2. Project resettlement plan to be updated and disclosed on ADB website 3. Standards of the entitlement matrix of the resettlement plan not to be lowered

^a All cash compensation in this entitlement matrix will be adjusted for inflation till the year of compensation payment.

^b Replacement Cost is calculated based on the following elements: (i) fair market value; (ii) transaction costs; (iii) interest accrued, (iv) transitional and restoration costs; and (v) other applicable payments, if any.

^c Vulnerable groups those below the poverty line, the landless, the elderly, the disabled, women and children, indigenous peoples, and those without legal title to land.

^d NGO will assist in identification and purchase of income generating equipment/asset

44. All compensation and other assistances¹⁴ will be paid to all affected persons prior to commencement of civil works. After payment of compensation, affected persons would be allowed to take away the materials salvaged from their dismantled houses and shops and no charges will be levied upon them for the same. The value of salvaged materials will not be deducted from the overall compensation amount due to the affected persons. A notice to that effect will be issued

¹⁴ While compensation is required prior to dispossession or displacement of affected people from their assets, the full resettlement plan implementation, which may require income rehabilitation measures, might be completed only over a longer period of time after civil works have begun. Displaced people will be provided with certain resettlement entitlements, such as land and asset compensation and transfer allowances, prior to their displacement, dispossession, or restricted access.

intimating that affected persons can take away the materials. Affected persons receiving compensation for trees will be allowed to take away timber of their acquired trees for their domestic use. Trees standing on the land owned by the government will be disposed of through open auction by the concerned Forest Department.

III. SOCIOECONOMIC INFORMATION

45. The most important aspect of social safeguard measures is to generate well documented socioeconomic information related to each subproject. As highlighted in the SPS and OM/F1 the following steps are essential to follow in safeguard compliance.

A. Surveys

46. A social impact assessment (SIA) survey of all affected persons will be undertaken in the subproject area to determine the magnitude of displacement and prospective losses, identify vulnerable groups, ascertain costs of compensation, livelihood restoration and improvement and relocation (if required), and to prepare a resettlement plan for implementation. The SIA survey will comprise of baseline socioeconomic sample survey and census.

47. **Baseline Socioeconomic Sample Survey:** The purpose of the baseline socioeconomic sample survey of affected persons is to establish monitoring and evaluation parameters. It will be used as a benchmark for monitoring the socioeconomic status of project influenced persons throughout the project implementation and after project completion. The survey will cover 20% of affected persons. The survey will also collect gender-disaggregated data to address gender issues in resettlement. The survey has several components: (i) preparation of accurate maps of the subproject area; and (ii) analysis of socioeconomic conditions of affected persons and income resources of the population. For this purpose, Appendix 7 provides the model of questionnaire that can be used for socioeconomic sample survey.

48. **Census:** in this purpose, a census should be carried out to identify the actual number of affected persons and their assets including the income and livelihood patterns. The purpose of the census is to: (i) identify and list all potentially affected persons; (ii) assess their income and livelihoods; (iii) assess land ownership and other immovable properties; (iv) make an inventory of their affected assets; (v) collect gender-disaggregated information pertaining to the economic and socio-cultural conditions of displaced persons and households; and (vi) understand affected persons perception, attitudes and preparedness to face project related challenges. Appendix 8 provides a model questionnaire for the assets verification survey/census.

49. **Qualitative Data Collection:** The required qualitative data will be determined on the basis of the components of the subproject. Qualitative data collection tools include: 1). Focused Group Discussions (FGDs) with subproject specific groups from the target community considering gender and poverty as cross cutting issues; 2). Key-informant Interviews (KIIs) with all government, private, Community Based Organization (CBO) leaders, and non-government agencies representatives (if required). For conducting these FGDs and KIIs, it is essential to develop a checklist for each specific discussion or interview. The outcome of FGDS and KIIs should be recorded and transform such data into written form including participant/s general information.

50. The qualitative data collected through these two channels should be used to explore gender, poverty, social and cultural factors related to the subproject.

B. Resettlement Plan Preparation

51. The resettlement plan will be prepared based on the results of the census, baseline socioeconomic sample surveys, and land and other asset valuations collected from district or country level line agencies as well as market surveys. It will include the results and findings of the census of affected persons, and their entitlements to restore losses, institutional mechanisms and schedules, budget, assessment of feasible income restoration mechanisms, grievance redress mechanisms, and results monitoring mechanisms. The resettlement plan should be formulated as outlined in Appendix 6.

52. Resettlement plans will closely follow the resettlement principles outlined in this agreed resettlement framework. Each resettlement plan will be submitted to ADB for review and approval after endorsed by the Executing Agency(MOFT). In addition, all resettlement plans should translate into local language (*Devehi*) and make available for the public for their knowledge and understanding.

C. Gender Impacts and Mitigation Measures

53. Women and female-headed households are considered as a vulnerable group according to this Resettlement Framework. Any negative impacts of a subproject on female-headed households will be dealt with on a priority basis. The resettlement plan will ensure that socioeconomic conditions, needs and priorities of women are identified and the process of land acquisition will ensure that gender impacts are adequately addressed and mitigated. Women's FGDs will be conducted to address specific issues related to women during the SIA stage. During disbursement of compensation and provision of assistance, priority will be given to female-headed households. Joint ownership in the name of husband and wife will be provided in cases of non-female-headed households.

IV. CONSULTATION, INFORMATION DISCLOSURE AND GRIEVANCES

A. Meaningful Consultation and Participation of key stakeholders

54. Meaningful consultations will be undertaken with all affected persons, their host communities, if any, and the civil society for every subproject identified as having involuntary resettlement impacts. The consultation process established for the program will employ a vast range of formal and informal consultative methods. Different techniques of consultation with stakeholders are proposed during project preparation according to the socioeconomic conditions of the community affected, viz., KIIs, public meetings, FGDs, etc. Particular attention will be paid to the need of the disadvantaged or vulnerable groups, especially those who are below the poverty line, the landless, the elderly, female-headed households, women and children, and those who are without legal title to land. The key informants who are to be consulted, during the project preparation phase and during the Resettlement Plan implementation are:

- (i) Heads and members of households who are likely to be affected by the project;
- (ii) Vulnerable households;
- (iii) Affected women;
- (iv) Island Council and City Council members, WDCs members, community leaders, and representatives of community-based organizations; and
- (v) CBOs and NGOs, and Government agencies and departments.

55. The resettlement plan will be implemented in close consultation with the key (primary) stakeholders. Women's participation will be ensured by involving them in public consultation at various level and stages of project preparation and by arrangements, which would enhance their ability to attend such meetings. The Executing Agency will ensure that views of the affected persons, particularly those vulnerable, related to the resettlement process are looked into and addressed. The design and supervision consultants will also ensure that groups and individuals consulted are informed about the outcome of the decision-making process and confirm how their views were incorporated. This will be ensured through FGDs and multi stakeholders meetings in the project area. All such meetings and consultation will be documented for future references.

B. Information Disclosure and Resettlement Plan Disclosure

56. Copies of the approved Resettlement Framework and resettlement plans will be made available in Maldives language (*Devehi*) at accessible locations to affected persons. The draft and final Resettlement Framework and RPs will disclose on ADB's (and Government website – MEE) and will make available to affected persons; information dissemination and consultation will continue throughout the program implementation. Dissemination of information will be done by the PMU through WDCs deploy in each subproject island. The WDCs are statutory grass-roots governmental organizations identify and appointed by Island Councils or City Councils on island or city basis. Executing Agency is planned to use WDCs in all relevant islands to cover community mobilization and gender empowerment activities that come under the capacity development program of the Project.

C. Grievance Redress Mechanism

57. A grievance redress mechanism (GRM) will be established to receive and facilitate the resolution of affected persons (APs) concerns, complaints, and grievances on negotiated/voluntary land donation or involuntary land acquisition, relocation, income restoration, environmental management and other construction and operation related issues. The GRM is accessible to all APs to address their concerns, grievances and issues effectively and swiftly, in accordance with ADP SPS, 2009.

58. **First Tier:** City Council/Island Council – grievances will be registered informally by contacting the city/island councils. If the grievance cannot be resolved informally then the APs can register a formal complaint. The council must screen the grievance to determine whether the concerns raised in the grievance are within the scope of the project. The council will determine solutions to the issues either by (i) discussing internally, or (ii) joint problem solving with aggrieved parties, or (iii) a combination of both options. If the complaint is resolved within a week, the council must communicate the decision to the aggrieved party formally or informally. Should matter be unresolved and/or the AP be unhappy with the result, the complaint will be referred to the next tier. The grievance redress committee (GRC) includes the island's representatives as well as project officers related to each island, as shown in the Figure 2 below.

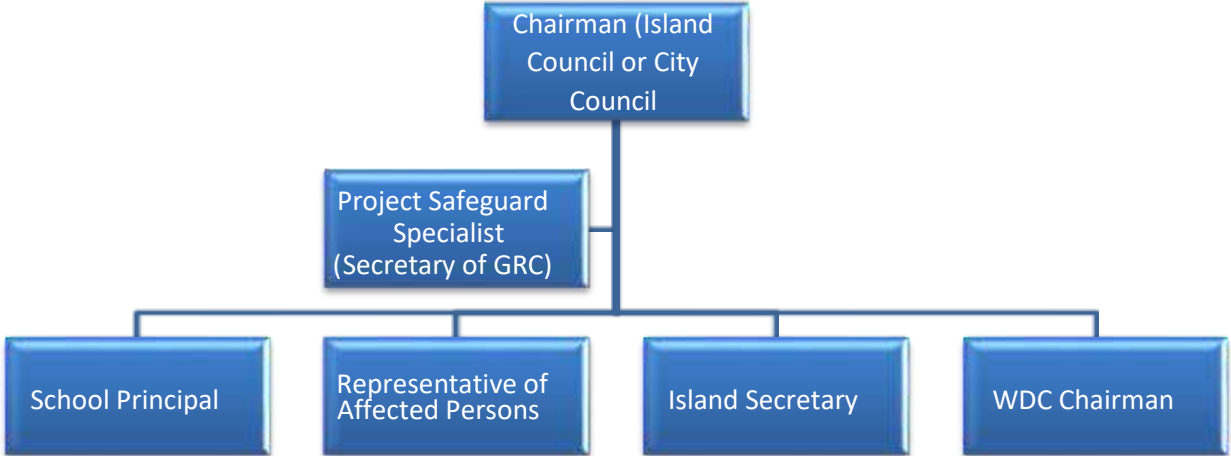


Figure 2: Grievance Redress Committee Composition for First Tier

59. **Second Tier:** The affected person can elevate the grievance to the second tier, and submit a complaint on a letter addressed to MEE. The MEE will forward the letter to the PMU. The PMU will be responsible to resolve the complaint within 15 days and communicate the decision to the aggrieved party. The PMU screens the grievance and determines if it is related to the project. If unrelated, the AP is notified in writing. If it is relevant to the project, the PMU will hold discussions with the MEE on the matter and if necessary, (i) arranges visit the site and hold on-site discussions and/or (ii) refers the matter to the project steering committee. The PMU then decides on the action that will be taken by the project to address the grievance, and the decision will be conveyed to the AP in writing.

60. The affected persons can also direct contact (in writing) the ADB Project Officer at ADB headquarters. The complaint can be submitted in any of the official languages of ADB’s Developing Member Countries. This may be done at any time [add appropriate address or method of contact].

61. The APs can also use the ADB Accountability Mechanism (AM) through directly contacting (in writing) the Complaint Receiving Officer (CRO) at ADB. The complaint can be submitted in any of the official languages of ADB’s DMCs. The ADB Accountability Mechanism information will be included in the Project Information Document to be distributed to the affected communities, as part of the project GRM.

62. The GRM notwithstanding, an aggrieved person shall have access to the country’s legal system at any stage through the Maldives judicial or appropriate administrative system. This can run parallel to accessing the GRM and is not dependent on the negative outcome of the GRM.

63. The flow diagram of resolving complaints under the GRC is shown in Figure 3.

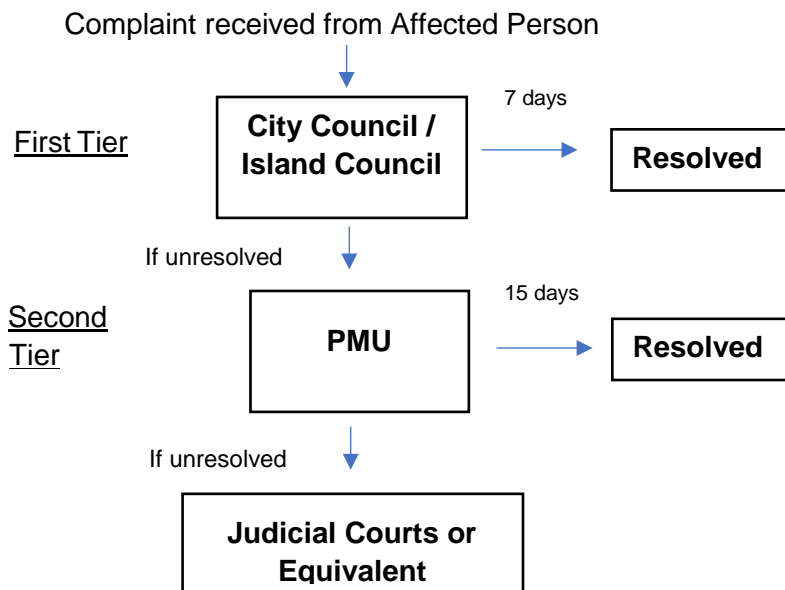


Figure 3: Grievance Redress Mechanism Diagram for Complaints Resolution

64. The GRM will include group meetings and discussions with APs to address general and common grievances. These meetings and discussions will be announced in advance, conducted at the time of day agreed on with APs (based on their availability), and facilitated by the PMU and PMDSC at least quarterly. The PMU and PMDSC shall ensure that illiterate APs or vulnerable APs are assisted to understand the grievance redress process, to register complaints and with follow-up actions at different stages in the process. Records will be kept by the PMU to keep track of all grievances received, both informal and formal, including contact details of complainant, date when the complaint was received, nature of grievance, agreed corrective actions and the date when these were effected, and final outcome. A Sample Grievance Registration Form is attached in Appendix 12.

65. All costs involved in resolving the complaints (meetings, consultations, communication and reporting, and information dissemination) will be borne by the PMU.

V. COMPENSATION, INCOME RESTORATION AND RELOCATION

A. Compensation

66. The project will take its best effort to use government land and buildings for the project. The Island Councils and City Councils will play a major role with Executing Agency in negotiating or involuntary land acquisition issues. When the Island Councils and City Councils settle the negotiation or involuntary land acquisition, the affected persons are entitled to get certain benefits as shown in Entitlement Matrix (Table 1). Compensation for loss of land will be determined on the basis of replacement cost.¹⁵

67. Affected persons identified under involuntary land acquisition/loss of structures, will be provided with an advance notice prior to possession being taken of the land/properties. In

¹⁵ A market survey will be conducted to determine prices and costs. Full replacement cost will be paid. Replacement Cost is calculated based on the following elements: (i) fair market value; (ii) transaction costs; (iii) interest accrued; (iv) transitional and restoration costs; and (v) other applicable payments, if any.

addition, they would be allowed to take away the materials salvaged from their dismantled houses and shops and no charges will be levied upon them for the same. A notice to that effect will be issued clarifying that they can salvage the materials. The Executing Agency will provide satisfactory evidence to ADB that voluntary land donation and provision of assistance stated in the entitlement matrix are fully completed before commencing the civil works.

B. Income Restoration and relocation

68. Each affected person whose income or livelihood is affected by a subproject will be assisted to improve or at least to restore it to pre-project level. Income restoration schemes will be designed in consultation with affected persons and considering their resource base and existing skills. It should be addressed in the resettlement plan of concerned subproject with a financial allocation for the implementation of income restoration program. The measures for income restoration will be as indicated in the Entitlement Matrix.

69. Income restoration activities are of two types (i) short-term; and (ii) long-term. Short-term income restoration activities are intended to restore affected person's income in the period immediately before and after relocation focusing on relocation and providing short-term allowances such as (i) subsistence/transitional allowance; and (ii) shifting assistance. Long-term options depend on the degree of disruption to the economic activity. All affected persons facing livelihood loss and vulnerable affected persons would be eligible for income restoration options. These will be derived from detailed socioeconomic survey information, conducted as a part of the resettlement plan, and may include provision of income generating assets and/or training to operate them. The time frame will be decided based on the training to be provided, which will also be outlined in the resettlement plan. The resettlement plan budget will reflect the cost of providing income generating assets and training. Strategies for promoting economic recovery of affected persons should also include skill upgrading through training. Project officials will ensure affected persons' access to Government schemes that could help them restore income and livelihoods.

VI. INSTITUTIONAL ARRANGEMENTS AND IMPLEMENTATION

A. Institutional Arrangements

70. The Ministry of Finance and Treasury (MOFT) will be the Project Executing Agency while Ministry of Environment and Energy (MEE) will be the Implementing Agency. Whereas Waste Management Corporation Limited (WAMCO) will be service provider and operator of future waste management assets (e.g. for collection and transfer, C&D waste processing etc.) created under the project. The Environmental Protection Agency (EPA) is an important stakeholder in charge of regulatory compliance.

71. A project steering committee (PSC) will be set up with the Minister of MEE as chair, and a policy level representation from the MOFT, Ministry of Tourism, Ministry of Health, Ministry of Gender and Family, Local Government Authority, and EPA as members, and the project director as member and the convener of the PSC. The PSC will review overall implementation progress and recommend key policy decisions.

72. A dedicated full-time project management unit (PMU) will be established within the MEE, consisting of 8 staff as follows: (i) Project Director (part-time, DG of Department), (ii) Project Manager (full time), (iii) Procurement Specialist, (iv) Finance Specialist, (v) Safeguard Specialist, (vi) Civil Engineer, (vii) IEC Specialist, and (viii) administrative assistant. The Project Manager

reports to the Director General of MEE. The PMU staff will be financed from the grant proceeds. The PMU will be strengthened with external experts in the areas of finance, procurement, technical areas, and contract management. The PMU will work closely with Island Councils for the community-based outer island waste management systems targeting poor and women (Output 2).

73. Technical committee (TC) with the representation from Ministry of Environment and Energy, Ministry of Tourism, Ministry of Health, Ministry of Gender and Family, Local Government Authority, Environmental Protection Agency, WAMCO, Thilafushi Corporation Limited, and environmental NGOs (this will be selected through Maldives NGO Federation) will be established to advise PMU on technical matters.

74. For Output 2 implementation, one focal person will be assigned by each outer island council to coordinate with PMU and work closely with Public Awareness and Capacity Building Consultant (PACCB). The PMU Safeguards Specialist (PMUSS) will be responsible for compliance with ADB SPS and national laws and will oversee all environmental and social safeguards with support of PMDSC. The PMU SS will be supported by the PMDSC Environmental Safeguard Expert (National), who, among other things, will review and update the safeguards documents, prepare social safeguard documents for the components for which sites are not yet identified based on surveys, consultations and due diligence; and ensure sub-projects are compliant with the resettlement framework and ADB SPS. The PMU will submit island-specific social safeguard documents to ADB for approval.

75. Consultant firms will be recruited under the project to support engineering designs, supervision, project management, institutional capacity strengthening, and community awareness. The outline terms of reference are described in the Project Administration Manual (footnote 5). Recruitment method will be through quality- and cost-based (90:10) selection and cost quality selection for the NGO. All consultants will be recruited in accordance with ADB's Guidelines on the Use of Consultants (2013, as amended from time to time).

B. Institutional Capacity

76. Capacity to handle environmental/involuntary resettlement impacts, gender and vulnerability issues, etc., needs to be built in the Project. Training of PMU staff on aspects such as environmental planning/resettlement planning/implementation, social protection and gender, including the specific recording, reporting, and disclosure requirements therefore need to be planned separately.

77. For the capacity building of designated social safeguards officer and engineers, SGC PMU will organize training programs on safeguards. Services of consultant trainers may be procured for coordinating and imparting required trainings to the staff.

78. Owing to the complexity of Projects spread across a large area, there is a need to specially focus on capacity building on social (distinct social, economic and cultural traits and traditions of people and the importance of preserving these, including indigenous knowledge systems, etc.), legal (traditional rights over land and land tenure issues) and technical aspects in such Projects with an adequate budgetary provision. Training on provisions of EARF/resettlement framework. Further, capacity building of CBOs in the Project area will be considered to ensure that they are able to represent the affected groups more effectively. If required external resources, e.g., anthropologists and development practitioners with relevant experience will be employed.

Activity	Months															
clearance prior to award of contracts.																
Issue notice to displaced persons.										♦						
Compensation prior to displacement and income rehabilitation ongoing.											♦	♦	♦			
Written confirmation from PMU to ADB that all compensation paid in sections ready for construction. Permission to contractor to begin works once compensation to displaced persons is confirmed.													♦			
Relocation as required													♦	♦	♦	
Takeover possession of acquired property													♦	♦	♦	
Handover land to contractors															♦	
Start of civil works																♦
Skills training as required for income restoration													♦	♦	♦	♦
Grievance Redress Mechanism		♦	♦	♦	♦	♦	♦	♦	♦	♦	♦	♦	♦	♦	♦	♦
Internal monitoring				♦	♦	♦	♦	♦	♦	♦	♦	♦	♦	♦	♦	♦
Monthly monitoring reports				♦	♦	♦	♦	♦	♦	♦	♦	♦	♦	♦	♦	♦
Semi-annual monitoring reports (PMU to ADB)				♦	♦	♦	♦	♦	♦	♦	♦	♦	♦	♦	♦	♦
Rehabilitation of temporarily occupied lands																Immediately after construction

ADB = Asian Development Bank, GRC = Grievance Redress Committee, PMU = Project Management Unit.

Note: The Resettlement Plan will be updated based on final detailed design and displaced person census and surveys. Endorsement and disclosure of finalized Resettlement Plans consistent with the Resettlement Framework to be undertaken.

IX. MONITORING AND REPORTING

82. Monitoring of a development project implemented with certain goals and objectives in general, needs to assess the output, effects and impact of the strategies. Therefore, monitoring is a major part of the resettlement management system to ensure its goals and objectives are adequately met. Resettlement plan implementation will be monitored internally. The safeguards staff within the PMU will monitor resettlement plan implementation with support of WAMCO and EA. The project safeguard specialist will prepare a semi-annual progress reports and submit them to the PMU. The Executing Agency will prepare semi-annual monitoring reports and submit to ADB. These reports will describe the progress of the implementation of resettlement activities and compliance issues, if any, and corrective actions taken to address them. These reports will closely follow the involuntary resettlement monitoring indicators agreed at the time of resettlement plan approval. Sample monitoring indicators are in Appendix 9.

CRITERIA FOR PLANNING AND DESIGN OF SUBPROJECTS, INCLUDING SITE SELECTION

Criteria	Remarks
Pre-requisites	
(i) No subproject scope will include features that appear on schedule D of the EIA regulations (2007, updated 2012) (List of Development Proposals Requiring an Environmental Impact Assessment Study)	Development proposals on Schedule D of the EIA regulations related to solid waste management are landfills, incinerators and large scale waste storage and separation facilities.
(ii) A IEE and EMP must be prepared for each subproject, which must comply with EHS Guidelines on Waste Management Facilities	PMU to seek clearance from ADB on project siting if the criterion cannot be met due to space constraints.
(iii) Sites must not have any land acquisition or involuntary resettlement and social safeguard issues.	Verify land ownership records. Prepare social safeguard document following the guidelines in the Resettlement Framework.
(iv) Any new facility must not be sited in an environmentally sensitive area, including all areas within 30m of the shoreline, or within 30m of areas such as thickly vegetated areas that are known to be habitats for bird species of conservation value	<p>The 30m distance should be exceeded where possible. The restriction may be reviewed depending on site availability and stakeholder consultation, and provision of design measures to prevent release of leachate into the sea or onto the vegetated area in the event of the capacity of the leachate collection tank being exceeded.</p> <p>On the island of Huraa, where space is restricted and there is a wetland which is a protected area, special attention must be paid to the size of the IWMC leachate collection tank and provisions to contain leachate overflow during storm events.</p>
(v) No new facility to be sited within 500m of areas of cultural significance, such as ancient religious artifacts	<p>Verification, through consulting island councils and the Ministry of Education^[1], that no physical cultural heritage sites are situated within 500m of the IWMC site. The restriction may be reviewed on the basis of site availability and consultation with stakeholders. PMU to seek clearance from ADB on project siting if the criterion cannot be met due to space constraints.</p> <p>Provide for use of “chance find” procedures in the EMP, such that any artifacts are preserved for future generations</p>
(vi) Sites must have sufficient capacity to contain or handle volumes of waste projected to be generated over at least a 20 year planning horizon	To be assessed based on projections on growth in waste generation for each island
(vii) Sites must be at least 100m from residences, schools, clinics or mosques	The distance restriction may be reviewed depending on site availability and stakeholder consultation. PMU to seek clearance from ADB on project siting if the criterion cannot be met due to space constraints.
(viii) Sites must be least 100m from groundwater wells	The 100m limit is precautionary, however attention must be given in detailed design to ensure that the leachate collection tank is protected to exclude flood waters, including during storm situations, to ensure that leachate does not enter the groundwater lens. PMU to seek clearance from ADB on project siting if the criterion cannot be met due to space constraints.
(ix) Sites must not intersect with power lines, water supply pipelines or sewer lines	Where these lie across proposed sites, they must be re-aligned to avoid the site
(x) For initiatives that require the use of machinery such as shredders and presses,	

^[1] Management of the arts and culture sector is currently under the Ministry of Education.

Criteria	Remarks
there must be established access to technical expertise for servicing and spare parts must be regularly available in-country	
(xi) Consensus from island communities on proposed improvements.	Records of public consultations, issues raised, and measures taken to address them to be summarized in IEEs. These consultations shall ensure consultees include women as well as men.
(xii) No other work, including road, pipeline, or power line improvements are planned at or near the proposed site	Island council to confirm. If such sites are planned, details must be taken account of in design to ensure adequate separation of the infrastructure
(xiii) World Bank Group's Environmental, Health and Safety (EHS) Guidelines requires IWMCs to consider standard design of 110% volume and bunded for impermeable storage to avoid contaminated runoff entering the surface or groundwater.	Final detailed design to confirm capacity is 110% and bunded
Preferable	
(i) Where IWMCs exist, any improvements should be to the existing infrastructure, rather than replacement on new sites.	New sites may be necessary if existing site has become unsuitable due to new developments around it or there is objection from communities to rehabilitate the existing IWMCs.
(ii) Removal of trees to be avoided where possible.	When mature trees (of diameter at breast height of 40cm or greater) must be removed, new trees must be planted of a number and species agreed with the island community
(iii) Where composting facilities are to be introduced or expanded, a high level of commitment from the community should be evident to ensure both cooperation in ensuring that waste to be composed is not contaminated and that compost will be purchased or used.	Evidence of commitment from the island community should be obtained, for example signed minutes from a public meeting, or signatures from household heads.

PROCEDURES FOR SCREENING AND DUE DILIGENCE ON INVOLUNTARY RESETTLEMENT IMPACTS

The project is categorized as C for involuntary resettlement impacts as per ADB Safeguard Policy Statement (2009). For all subprojects under Output 1 and one subproject under Output 2 for which sites are identified and preliminary designs are available, draft due diligence reports are prepared and will be updated based on detailed design.

Involuntary resettlement screening and due diligence will be conducted for all remaining subproject components, when the sites are identified. This Appendix provides guidance in screening and conduct of due diligence.

Screening of components will be undertaken at an early stage, immediately after potential sites/components are identified. ADB's involuntary resettlement impact screening checklist will be used for screening. The site selection criteria specified in the Environmental Assessment Review Framework will be applied to ascertain whether sites have any land acquisition or involuntary resettlement and social safeguard issues. The results of screening confirming that there are no land acquisition or involuntary resettlement impacts, will be presented in the Due Diligence Report.

Due diligence will be based on the engineering design and civil works footprints, field verification, study of Google Earth maps, land ownership and transfer records, confirmation of land availability as per requirement, and details of meaningful consultations with local communities, particularly those living around proposed project sites. ADB's involuntary resettlement impact screening checklist will be filled and appended to the respective due diligence reports, to confirm and support the due diligence.

Draft screening and due diligence reports will be submitted to ADB for review. These draft reports will be updated based on detailed design and ADB's approval obtained prior to start of construction.

SUGGESTED OUTLINE OF LAND ACQUISITION AND INVOLUNTARY RESETTLEMENT DUE DILIGENCE REPORT (DDR)

- (i) **Introduction:** Overview / general description of the project, stage of preparation of DDR (preliminary design/detailed design etc).
- (ii) **Description of Sub-project/Package:** Description of components and sites. Include Google Earth maps and photographs showing landuse of each site and its surroundings (depicting status before start of construction)
- (iii) **Land requirements, ownership and availability:** include a table with land requirement (area of land required per site/location), ownership of each site and area of land available at each location, existing landuse at the site and surrounding landuses. Establish that the land was not acquired in anticipation of ADB project and that there are no legacy issues with respect to land acquisition, no pending compensation or court cases or litigation pertaining to the land.

- (iv) **Socio-economic profile:** This section is to be included in case of any land donation or negotiated settlement. The socio-economic profile should cover economic status and vulnerability of land donor/land seller for land donation / negotiated settlement. It should help establish that no donor/seller was vulnerable or likely to be rendered vulnerable as a result of the donation/negotiated settlement.
- (v) **Screening and assessment of impacts.** Summarize results of screening. Confirm that the component complies with the project's site selection criteria and that no land acquisition and involuntary resettlement impacts are anticipated.
- (vi) **Consultations and disclosure:** Summary of consultations held with local/surrounding communities, key issues and concerns raised and how these were resolved/are proposed to be addressed, disclosure activities undertaken.
- (vii) **Summary and conclusions:** Summarize results of screening and due diligence.

Annexures to Due Diligence Report

1. Involuntary Resettlement Impact Screening Checklist
2. Land records for project sites showing plot number(s), area, ownership records; documents showing chronology of land acquisition and details of compensation payment OR land possession certificate with date of possession.
3. In case of negotiated settlement, include sale deed. In case of land donation, include gift deed.
4. Land registration/transfer record.
5. No Objection Certificates for project sites (for sites that belong to a different government department)
6. Minutes of meetings with community members, with consultation photographs and signatures of participants
7. Third party certification of land donation/negotiated settlement, if applicable

INVOLUNTARY RESETTLEMENT IMPACT SCREENING CHECKLIST

Probable Involuntary Resettlement Effects	Yes	No	Not Known	Remarks
Involuntary Acquisition of Land				
1. Will there be land acquisition?				
2. Is the site for land acquisition known?				
3. Is the ownership status and current usage of land to be acquired known?				
4. Will easement be utilized within an existing Right of Way (ROW)?				
5. Will there be loss of shelter and residential land due to land acquisition?				
6. Will there be loss of agricultural and other productive assets due to land acquisition?				
7. Will there be losses of crops, trees, and fixed assets due to land acquisition?				
8. Will there be loss of businesses or enterprises due to land acquisition?				
9. Will there be loss of income sources and means of livelihoods due to land acquisition?				
Involuntary restrictions on land use or on access to legally designated parks and protected areas				
10. Will people lose access to natural resources, communal facilities and services?				
11. If land use is changed, will it have an adverse impact on social and economic activities?				
12. Will access to land and resources owned communally or by the state be restricted?				
Information on Displaced Persons:				
<i>Any estimate of the likely number of persons that will be displaced by the Project? [] No [] Yes</i>				
If yes, approximately how many? _____				
<i>Are any of them poor, female-heads of households, or vulnerable to poverty risks? [] No [] Yes</i>				
<i>Are any displaced persons from indigenous or ethnic minority groups? [] No [] Yes</i>				

GAP ANALYSIS OF MALDIVES LAND ACT, ADB SAFEGUARD POLICY STATEMENT (2009) REQUIREMENTS

International Best Practice	Maldives Land Act Provisions	ADB SPS 2009 requirements	Gaps between Maldives laws, and ADB safeguard policy requirements	Gap filling measures for Harmonization
Avoidance or minimization of involuntary resettlement impacts of projects	No clause in the Act.	Explore viable alternative project designs to avoid and/or minimize involuntary resettlement impacts.	Local laws are silent on this key international best practice	Multiple technical options must be examined to avoid or minimize involuntary resettlement and physical, or economic displacement and to choose a better project option while balancing environmental social and financial costs and benefits. This practice applies to the project
Social Impact Assessment (SIA) to identify the impacts, risks and views of potential project affected persons and communities	The Act has no provision to conduct a social impact assessment in the proposed project areas	The borrower/client will conduct socioeconomic surveys and a census, with appropriate socioeconomic baseline data to identify all persons who will be displaced by the project and to assess the project's socioeconomic impacts on them. As part of the social impact assessment, the borrower will identify individuals and groups who may be differentially or disproportionately affected by the project because of their disadvantaged or vulnerable status.	No legal requirement to undertake SIA in the Maldives Land Act.	Social impact assessment will be conducted as early as possible during project processing and will specifically consider any impacts upon particularly poor and vulnerable affected persons and their needs.
Census survey to identify all affected persons	Island Council and City Council Officer (Chairman or Mayor) and PMU shall be responsible to identify, survey and notify the concerned parties and other works related to acquisition	Census survey to cover all affected persons, and it will be updated, based on the final detailed design data of the project.	No census is required under Maldives laws. Affected persons are identified using land records (which may not be updated).	Undertake a census survey of all affected persons and update the same based on changes, if any, found in the project final design or components. The Census survey will be based on land ownership (as on date of census) and accordingly all land records will be updated.

International Best Practice	Maldives Land Act Provisions	ADB SPS 2009 requirements	Gaps between Maldives laws, and ADB safeguard policy requirements	Gap filling measures for Harmonization
Categorization of the project according to the significance of IR impacts	No legal requirement in the Act to categorize projects according to the significance of IR impacts.	Categories A, B, and C are awarded to projects based on the level of the significance of potential IR impacts of a project.	Under the law, no categorization is done of project impacts including IR impacts	Categorize impacts by “significance” and define the volume of IR impacts – both direct and indirect – with particular attention to impacts on economic conditions and livelihoods of affected persons.
Preparation of a resettlement plan to address adverse IR impacts	No provision to formulated a resettlement plan	Prepare a resettlement plan elaborating on displaced persons’ entitlements, the income and livelihood restoration strategy, institutional arrangements, monitoring and reporting framework, budget, and time-bound implementation plan.	The state laws do not require the preparation of a resettlement plan.	Prepare a resettlement plan to avoid or mitigate negative impacts of physical and economic displacement arising from the project. The resettlement plan will elaborate all affected persons’ entitlements, including that of host communities, squatters, customary users and encroachers by paying special attention to the needs of the poor and the vulnerable households and communities. The resettlement plan will be submitted to ADB for review and approval prior to project approval.
Consult with affected persons	No clause in the Act. However, the Act has no provisions for a process of formal consultation with affected persons.	Meaningful consultations with all affected persons, host communities, if any, and concerned non-government organizations. Inform all displaced persons of their entitlements and relocation options.	Under national laws Information dissemination is limited to legal notification.	Consult project-affected persons, host communities, if any, and local non-governmental organizations [WDC], as appropriate. Provide them with opportunities to participate in planning of resettlement programs. Pay particular attention to the needs of vulnerable groups among those displaced, especially those below the poverty line, the landless, the elderly, women and children, or other displaced persons who may not be protected through national land compensation legislation.

International Best Practice	Maldives Land Act Provisions	ADB SPS 2009 requirements	Gaps between Maldives laws, and ADB safeguard policy requirements	Gap filling measures for Harmonization
Disclose involuntary resettlement information to project affected persons	No provision for the preparation or disclosure of involuntary resettlement information to project affected persons.	Also disclose the final resettlement plan to the affected persons and other stakeholders. Project monitoring reports are also disclosed.	No requirements for formal disclosure.	Disclose the Resettlement Plans (if any) including documentation of the consultation processes in a form and language (Divehi) accessible to key stakeholders, civil society, particularly affected groups and the general public in an accessible place.
Compensation at replacement Cost for property acquired.	No clause in the Act (MLA).	Compensation at full replacement cost for all affected property. Market value for trees and crops.	Island Council or City Council is the main body to decide the compensation. However, the Ministry of Home Affairs and Housing is the authorized body to allocate lands for all purposes and the Ministry needs to decide the compensation with the support of MEE, PMU and Island Councils and City Councils.	Value of land/property is to be agreed with the owner of the property through a process of consultation and negotiation. The process will be documented and verified. The compensation for structures such as houses are determined on the current market value, based on latest basic schedule rates.
All compensation is paid prior to actual displacement of affected households and the commencement of civil work	Acquisition of asset after notification and payment of compensation.	Pay compensation and provide other resettlement entitlements before physical or economic displacement of affected households.	There is no provision that such compensation will be paid to the project-affected persons prior to acquisition	No physical or economic displacement till full compensation is paid to all affected person (except in case of legally disputed cases).
Provision of full compensation without any deduction	No clause in the Act (MLA).	Full compensation is to be paid with no deductions unless land is provided in lieu of land acquired.	No clause in the Act (MLA).	No deduction to be done from cash compensation and all legal cost for acquisition to be borne by the executing agency. The value of salvaged materials or harvested from the acquired land will not be deducted from the compensation package.

Special assistance for vulnerable households	No clause in the Act (MLA).	Improve the standards of living of the displaced poor and other vulnerable groups, including women, to at least national minimum standards	No clause in the Act (MLA).	Special attention should be given as highlighted in the Gender Action Plan (GAP) and the PMU is responsible to identify such families.
International Best Practice	Maldives Land Act Provisions	ADB SPS 2009 requirements	Gaps between Maldives laws, and ADB safeguard policy requirements	Gap filling measures for Harmonization
Livelihood restoration	No clause in the Act (MLA).	Improve or at least restore the livelihoods of all displaced persons	The national standards are silent on livelihood restoration	All affected persons having significant impact on livelihood will be entitled for special assistance for livelihood restoration as indicated in EM.
Grievance Redressal Mechanism	No clause in the Act (MLA).	Establish a grievance redress mechanism to receive and facilitate resolution of the affected persons' concerns.	ADB policy provide for adequate and accessible grievance redressal mechanism.	Any grievances regarding land and property acquisition could be reported to Island Councils and City Councils within 7 days of public notification. MEE will decide on such grievances within 15 days.
Monitoring	No legal requirement in the Law for involuntary resettlement implementation monitoring.	In the projects with significant involuntary resettlement impacts, the borrower will retain qualified and experienced external experts. The borrower will prepare semi-annual monitoring reports. All monitoring reports are to be disclosed.	The local law does not provide for any monitoring mechanism.	Project with significant impacts to have external monitor or else internal monitoring by executing agency. All monitoring reports are to be disclosed

OUTLINE OF A RESETTLEMENT PLAN

This outline is part of the ADB SPS Safeguard Requirements 2. A resettlement plan is required for all projects with involuntary resettlement impacts. Its level of detail and comprehensiveness is commensurate with the significance of potential involuntary resettlement impacts and risks. The substantive aspects of the outline will guide the preparation of the resettlement plans, although not necessarily in the order shown.

Executive Summary

This section provides a concise statement of project scope, key survey findings, entitlements and recommended actions.

Project Description

This section provides a general description of the project, discusses project components that result in land acquisition, involuntary resettlement, or both and identify the project area. It also describes the alternatives considered to avoid or minimize resettlement. Include a table with quantified data and provide a rationale for the final decision.

Scope of Land Acquisition and Resettlement

This section: discusses the project's potential impacts and includes maps of the areas or zone of impact of project components or activities; describes the scope of land acquisition (provide maps) and explains why it is necessary for the main investment project; summarizes the key effects in terms of assets acquired and displaced persons; and provides details of any common property resources that will be acquired.

Socioeconomic Information and Profile

This section outlines the results of the social impact assessment, the census survey, and other studies, with information and/or data disaggregated by gender, vulnerability, and other social groupings, including:

- define, identify, and enumerate the people and communities to be affected;
- describe the likely impacts of land and asset acquisition on the people and communities affected taking social, cultural, and economic parameters into account;
- discuss the project's impacts on the poor, indigenous and/or ethnic minorities, and other vulnerable groups; and
- identify gender and resettlement impacts, and the socioeconomic situation, impacts, needs, and priorities of women.

Information Disclosure, Consultation, and Participation

This section: identifies project stakeholders, especially primary stakeholders; describes the consultation and participation mechanisms to be used during the different stages of the project cycle;

describes the activities undertaken to disseminate project and resettlement information during project design and preparation for engaging stakeholders; summarizes the results of consultations with affected persons (including host communities), and discusses how concerns raised and 36 recommendations made were addressed in the resettlement plan; confirms

disclosure of the draft resettlement plan to affected persons and includes arrangements to disclose any subsequent plans; and describes the planned information disclosure measures (including the type of information to be disseminated and the method of dissemination) and the process for consultation with affected persons during project implementation.

Grievance Redress Mechanisms

This section describes mechanisms to receive and facilitate the resolution of affected persons' concerns and grievances. It explains how the procedures are accessible to affected persons and gender sensitive.

Legal Framework

This section: describes national and local laws and regulations that apply to the project and identify gaps between local laws and ADB's policy requirements; and discuss how any gaps will be addressed. describes the legal and policy commitments from the executing agency for all types of displaced persons; outlines the principles and methodologies used for determining valuations and compensation rates at replacement cost for assets, incomes, and livelihoods; and set out the compensation and assistance eligibility criteria and how and when compensation and assistance will be provided. Describes the land acquisition process and prepare a schedule for meeting key procedural requirements.

Entitlements, Assistance and Benefits

This section: defines entitlements and eligibility of displaced persons, and describes all resettlement assistance measures (includes an entitlement matrix); specifies all assistance to vulnerable groups, including women, and other special groups; and. outlines opportunities for affected persons to derive appropriate development benefits from the project.

Relocation of Housing and Settlements

This section: describes options for relocating housing and other structures, including replacement housing, replacement cash compensation, and/or self-selection (ensure that gender concerns and support to vulnerable groups are identified); describes alternative relocation sites considered; community consultations conducted; and justification for selected sites, including details about location, environmental assessment of sites, and development needs; provides timetables for site preparation and transfer; describes the legal arrangements to regularize tenure and transfer titles to resettled persons; outlines measures to assist displaced persons with their transfer and establishment at new sites; describes plans to provide civic infrastructure; and explains how integration with host populations will be carried out.

Income Restoration and Rehabilitation

This section: identifies livelihood risks and prepare disaggregated tables based on demographic data and livelihood sources; describes income restoration programs, including multiple options for restoring all types of livelihoods (e.g. project benefit sharing, revenue sharing arrangements, joint stock for equity contributions such as land, discuss sustainability and safety nets); outlines measures 37

to provide social safety net through social insurance and/or project special funds; describes special measures to support vulnerable groups; explains gender considerations; and describes training programs.

Resettlement Budget and Financing Plan

This section: provides an itemized budget for all resettlement activities, including for the resettlement unit, staff training, monitoring and evaluation, and preparation of resettlement plans during loan implementation. describes the flow of funds (the annual resettlement budget should show the budget-scheduled expenditure for key items) includes a justification for all assumptions made in calculating compensation rates and other cost estimates (taking into account both physical and cost contingencies), plus replacement costs. includes information about the source of funding for the resettlement plan budget.

Institutional Arrangements

This section: describes institutional arrangement responsibilities and mechanisms for carrying out the measures of the resettlement plan; includes institutional capacity building program, including technical assistance, if required; describes role of NGOs, if involved, and organizations of affected persons in resettlement planning and management; and describes how women's groups will be involved in resettlement planning and management,

Implementation Schedule

This section includes a detailed, time bound, implementation schedule for all key resettlement and rehabilitation activities. The implementation schedule should cover all aspects of resettlement activities synchronized with the project schedule of civil works construction, and provide land acquisition process and timeline.

Monitoring and Reporting

This section describes the mechanisms and benchmarks appropriate to the project for monitoring and evaluating the implementation of the resettlement plan. It specifies arrangements for participation of affected persons in the monitoring process. This section will also describe reporting procedures.

** Special Note: For more details see ADB Safeguard Policy Statement 2009.*

SOCIOECONOMIC SURVEY OF HOUSEHOLDS

Questionnaire Number											
S. N.	Description	Instructions									
GENERAL INFORMATION											
1	Island's name:	Write									
2	Atoll's name:	Write									
3	House number and address:	Write									
4	Household head's name:	Write									
5	Name of the Respondent:	Write									
6	Relationship to the household head (HHH):	Write									
7	Family members' details:	Write and use numerical codes given									
S. N.	Name of HH members	Relation to HHH *	Age	Sex*	Marital Status*	Any disabilities*	Education*		Occupation*		
1		HHH					School*	Vocational	Primary	Secondary	
2											
3											
4											
5											
6											
7											
8	Type of Family:	Extended				Nuclear					
9	If extended family, number of nuclear families:									Write	
10	Vulnerability: (mark all applicable answers):										√
	Vulnerability	Answer	Vulnerability		Answer						
	Disabled		Female headed household								
	Elderly		Male headed household								
	Poor		No vulnerability								
11	Type of vulnerability:										√
	Type of Vulnerability	Answer	Type of Vulnerability		Answer						
	Single		Multiple								
	Not applicable										
DETAILS OF ASSETS AVAILABLE AND ENERGY USE:											
12	How much total land your family members own? (in Sq. Ft.)										Write
13	Who has ownership of lands?	Male		Female		Both Male and Female					√
14	Details of land owned	Homestead		Agriculture		Commercial					√
15	Have you rented in any land?	Yes		No		How much (Sq. Ft.)?					√
16	Have you rented out any land?	Yes		No		How much (Sq. Ft.)?					√
17	Own house?	Yes		No		Number of total rooms					√
18	Do you own any vehicles?	Yes		No		Type*					√ and write

19	Do you own vessels?	Yes		No		Type*				√ and write	
20	Do you have electricity?	Yes		No		Type*				√ and write	
21	If yes, any load shedding?	Yes		No		Frequency*				√ and write	
22	When you got the connection? Write the year.									Write	
23	What is the monthly bill? Total Units			Subsidy		Paid amount				Write	
24	What are the available utilities (electric)? Write the number available or planned to buy.									√	
	Availability	TV/VCD/DVD	Computer	Radio	Water pump	Cooker	Washing Machine	Grinder	Oven/Grill	Electric iron	Fans
	Now										
	Planned										
25	Do you have following utilities at the moment or planned to have?									√	
	Availability	A/C Machines	Refrigerator	Defreezer	Other (specify)						
	Now										
	Planned										
26	Do you have basic sanitary facilities?									√	
	Availability			Yes	No	If yes, type					
	General facilities (non-electrified)					Linked to sea	Septic tank	Commode	Hole/Pit	Other	
	General facilities (Electrified)					Linked to sea	Septic tank	Commode	Hole/Pit	Other	
27	Do you have telephone facilities?									√ and write	
	Availability			Yes	No	If yes, number (within Family)					
	Land phone (wire connection)										
	Mobile/cell phone										
28	Do you use internet facilities?									√	
	Yes	No	Supposed to get a link								
29	Type of main energy source mostly used for cooking: (mark in priority order – 1, 2, and 3)									√ and write	
	Source		Yes	No							
	LPG (Gas)										
	Kerosene (Oil)										
	Firewood										
	Biogas										
	Electricity										
	Other (specify)										
30	What is your opinion on existing diesel power house in the island?									√ and write	
	Opinion				Yes	No	Don't know/can't say				
	Running in good condition										
	Having maintenance issues frequently										
	Make noise and air pollution										
	Tariff is too high even though we get subsidy										
	Tariff is too high										
	Other (specify)										
31	Do you know what renewable energy is?									√	
	Yes	No									
32	Have you heard about solar and wind power?									√	
	Sola	Yes	No								
	Win	Yes	No								
33	Will you be happy if the government replace solar or wind power instead diesel power house in your island/city?									√	
	Sola	Yes	No								
	Win	Yes	No								
34	If yes, are you ready to have a partnership with this upcoming project?									√	
	Yes	No	Don't know/can't say								
35	What is the main source of drinking water?									√ and write	
	Source			Yes	No						

	Rain water																					
	Well water																					
	desalinated water																					
	Mineral water																					
	Other (specify)																					
HEALTH SEEKING BEHAVIOR																						
36	What kind of medical facilities are you seeking when there is a health related issue? (mark according to the priority order)																				√ and write	
	Facility	Yes	No	Time spend to reach	Opinion on the service taken*																	
	Health post/centre																					
	Island private clinic																					
	Regional hospital																					
	Male government hospital (IGM)																					
	Male private medical hospital																					
	Male private clinics																					
	Other (specify)																					
37	Number of family members that have faced health problems in past 12 months?																				√	
	Male		Female																			
38	What is your first response when a family member gets ill?																				√	
	Response	Yes	No																			
	Give indigenous treatment																					
	Get service from a reliable source																					
	Other (specify)																					
ECONOMIC CONDITION:																						
39	Please provide your current patterns of expenditure per month in MRf?																				Write Keen on each category	
	Sector/category	Foods	Education	Health	Electricity	Transport	Social	Savings	IT Connection	Other												
	Family expenditure																					
	Grand Total																					
40	What were the sources of income and total monthly income of the family in MRf?																				Write Keen on each category	
	Member	Fishing	Wage Emp.	Agricultural	Livestock	Remittance/Subsidy			Trade/ Industry	Interest if any												
						Gov. allowances	Foreign	Other														
	HHH																					
	Spouse																					
	Other Member 1																					
	Other Member 2																					
	Total																					
	Grand total																					
41	When there is a deficiency in monthly income, what are the available options?																				√	
	Option	Yes	No																			
	Borrow money from a friend																					
	Borrow money from a relative																					
	Taking a loan from an institution/bank/organization																					
	Use saved money																					
	Other (specify)																					
42	Compare your previous conditions of meeting basic family needs with that of current condition.																				√	
	Previous condition								Yes	No	Don't know	No change										
	1. In the past 12 months, has the family reduced quality and amount of meals per a day, because of poor income?																					
	2. During the past 12 months, are there any dates in which your family starved?																					
	3. During the past 12 months you or any member of your family had to work extra hours or to engage in an extra work in order to earn enough to feed the family?																					
	4. In the past year, did your family sell (or consume) more of your small																					

	livestock than usual (e.g. chicken and other fowl) in order to have enough food to eat?																									
	5. In the past year, did your family sell off some household possessions, in order to buy food?																									
	6. In the past year, did your family borrow food or money for food from relatives, friends or neighbours?																									
GENDER RELATED INFORMATION:																										
43	What kind of work do the women of the household undertake outside home? (Can tick more than one according to the priority order)?					√																				
	<table border="1"> <thead> <tr> <th>Work/Task</th> <th>Yes</th> <th>No</th> </tr> </thead> <tbody> <tr> <td>Agriculture</td> <td></td> <td></td> </tr> <tr> <td>Manual labour</td> <td></td> <td></td> </tr> <tr> <td>Commercial activities (including self-employment)</td> <td></td> <td></td> </tr> <tr> <td>Office related work in gov. or private institutions</td> <td></td> <td></td> </tr> <tr> <td>Child rearing and caring</td> <td></td> <td></td> </tr> <tr> <td>Other (specify)</td> <td></td> <td></td> </tr> </tbody> </table>	Work/Task	Yes	No	Agriculture			Manual labour			Commercial activities (including self-employment)			Office related work in gov. or private institutions			Child rearing and caring			Other (specify)						
Work/Task	Yes	No																								
Agriculture																										
Manual labour																										
Commercial activities (including self-employment)																										
Office related work in gov. or private institutions																										
Child rearing and caring																										
Other (specify)																										
44	Are the women of the household free to move alone outside the house for other purposes?					√																				
	Yes	No	Occasionally/family functions only																							
45	Who are the main decision makers in the family?					√																				
	<table border="1"> <thead> <tr> <th>Person</th> <th>Yes</th> <th>No</th> </tr> </thead> <tbody> <tr> <td>Mostly men</td> <td></td> <td></td> </tr> <tr> <td>Mostly women</td> <td></td> <td></td> </tr> <tr> <td>Both men and women</td> <td></td> <td></td> </tr> <tr> <td>Other (specify)</td> <td></td> <td></td> </tr> </tbody> </table>	Person	Yes	No	Mostly men			Mostly women			Both men and women			Other (specify)												
Person	Yes	No																								
Mostly men																										
Mostly women																										
Both men and women																										
Other (specify)																										
46	If both, what kinds of decision are taken by each?					Write																				
	<table border="1"> <thead> <tr> <th>Men</th> <th>Women</th> </tr> </thead> <tbody> <tr> <td>1</td> <td></td> </tr> <tr> <td>2</td> <td></td> </tr> <tr> <td>3</td> <td></td> </tr> <tr> <td>4</td> <td></td> </tr> </tbody> </table>	Men	Women	1		2		3		4																
Men	Women																									
1																										
2																										
3																										
4																										
47	Do the women of the household attend/participate in village/community level events?					√																				
	Mostly	No	Occasionally, when there is a need																							
48	What are the organizations that women mostly involved in this island/city?					Write																				
	<table border="1"> <thead> <tr> <th>Organisation Name</th> <th>Any designation bearing at the moment</th> </tr> </thead> <tbody> <tr> <td>1</td> <td></td> </tr> <tr> <td>2</td> <td></td> </tr> <tr> <td>3</td> <td></td> </tr> <tr> <td>4</td> <td></td> </tr> </tbody> </table>	Organisation Name	Any designation bearing at the moment	1		2		3		4																
Organisation Name	Any designation bearing at the moment																									
1																										
2																										
3																										
4																										
49	How important you think women should get some opportunities for training or capacity development that aims livelihood improvement?					√																				
	Yes	No	Don't know/can't say																							
50	How important you think that women can play a major role in energy saving at household level?					√																				
	Yes	No	Don't know/can't say																							
51	If women get an active participation in this project, do you support them?					√																				
	Yes	No	Don't know/can't say																							
PERCEPTION ON PROPOSED PROJECT'S IMPACT ON LIVELIHOOD:																										
52	Could you name three most positive impact of the proposed project?					Write																				
	1																									
	2																									
	3																									

53	Could you name three most negative impact of the proposed project?	Write	
	1		
	2		
	3		
54	Any other specific issue?	Write	
	Name of the enumerator	Date	Write

CENSUS SURVEY QUESTIONNAIRE FOR PROJECT AFFECTED FAMILIES

Questionnaire Number		Atolls' Name	
Subproject island		Ward No.	

S.N.	Description	Answer				Remarks	
GENERAL INFORMATION							
1	Name of Village:					Write	
2	Name of the Respondent:					Write	
3	Sex:	Male		Female		√	
4	Name of Household head					Write	
5	Sex of HH head:	Male		Female		√	
6	Age of HH head					Write	
7	Relationship of the Respondent with the Household Head					Write	
11	Family Type	Nuclear		Extended		√	
	Vulnerability	Female HH		Disable		√	
		Elderly		No vulnerability		√	
12	Demographic information of family members:					Write	
	Name	Sex	Age	Marital Status	Main Occupation	Highest Education	Vocational Education
LAND AND ASSETS OWNERSHIP							
17	Type of Land and Assets:					Write	
	Type of Land and Assets	Name of Current Owner	Sex	Acreage (Perch/Sq Mt/No.)	Type of Ownership*	Current Status#	
	Agricultural land						
	Commercial land						
	Residential land						
	Residential structure (House)						
	Commercial structure						
	RS+CS						
	Trees						
	Orchards						
	Shed						
	Well/Water tank						
	Others (specify) 1						

	Others (specify) 2											
	* Titled/Squatter/Encroacher/Tenant/Leased/Community/Other (specify)											
	#Occupied/Not occupied											
18	Type of Household Equipment and Vehicles Available (if available put the number):						Write					
	TV	Radio	Refrigerator	Mobile Phone	Landline Phone	Vehicles (including boats)						
INFORMATION OF AFFECTED LAND AND ASSETS												
19	Information of Affected Land:						Write					
	Total Holding by Types	Total land owned by HH (P)	Affected Cadastral total area (P)	Parcel No. and Map ref.	Actual Land Loss (P)	Remaining Area of the parcel (P)	Remaining Land of the HH (P)	Map Ref.	Parcel No.	Total Area		
	Agricultural land											
	Commercial land											
	Residential land											
	Other (specify)											
	Total											
20	Information of Affected Structure:						Write					
	Type of Affected Structure	Total Floor Area (Sq Mt)	Type of Structure*	Area Affected (Sq Mt)	Magnitude of Impact #	Replacement Cost						
	Residential Structure											
	Commercial Structure											
	Residential cum Commercial											
	Shed											
	Boundary wall											
	Other (Specify)											
	* 1. Thatched simple hut, 2. Mud/brick/tiled roof, 3. Cement/brick or cement block /tiled roof or Asbestos roof, 4. Cement/brick or cement block /GI sheet roof 5. Cement/ brick or cement block/concrete roof, 6. Tiled/brick or cement block /tiled roof or Asbestos roof 7. Tiled/ brick or cement block/tiled roof or asbestos roof, 8. Others (specify)											
	# Major/Moderate/Minor											
21	Is there any tenant in your house?			Yes		No					√	
22	If yes, how many families?										Write	
23	Do they have a land and house to resettle in another place?				Yes		No				√	
25	Have you taken any loan?		Yes		No						√	
26	If yes, balance remaining?										Write	
27	Source of loan taken?										Write	
28	In case of significant loss of the residential asset, thereby making it unviable, what kind of relocation option would you prefer?				Self relocation						√	
					Project assisted							
					Other							
					Not decided yet							
29	In case of self managed relocation, where would you relocate?				Within island						√	
					Other island							
					Male							
					Not decided yet							
30	If you have a commercial structure affected name the type of business?						Write					
	Type	Number	Impact ⁺	Type	Number	Impact ⁺						

	Shop/s			Hotel/ Restaurant				
	Pvt. Clinic			STD booth				
	Workshop			Office Complex				
	Factory			Other (specify)				
	* Major/Moderate/Minor							
31	Total Monthly Income	1.						Write
32	Is there any tenant in your Commercial Structure affected?	Yes		No			√	
33	If yes, how many?							Write
34	Do they have another place/structure to resettle their business activities?	Yes		No			√	
35	Are there any employees?	Yes		No			√	
36	Total monthly salary paid for them?	1.		2.			Write	
37	Total monthly income?							Write
38	Have you taken any commercial loan?	Yes		Yes			√	
39	If yes, balance remaining?							Write
40	Source of loan taken							Write
41	In case of significant loss of the commercial asset, thereby making it unviable, what kind of relocation option would you prefer?	Self relocation					√	
		Project assisted						
		Other						
		Not decided yet						
42	In case of self managed relocation, where would you relocate?	Within island					√	
		Other island						
		Male						
		Not decided yet						
INFORMATION OF AFFECTED CROPS AND TREES								
43	Information of Affected Crops and Trees:						Write	
	Type	Total Quantity *	Affected quantity	Lost Value				
	Timber							
	Other trees							
	Fruits 1 (specify)							
	Fruits 2 (specify)							
	Other (specify)							
	* (Perch/No.)							
INFORMATION OF LIVESTOCK AND POULTRY								
44	Do you own any livestock and poultry? (e.g. Cow, goat, pigs etc.):	Yes					√	
		No						
45	If yes, how many? Please specify the number by types:						Write	
	Types	No./Quantity Owned	Project Impact*					
	Cow							
	Goat							
	Poultry							
	Others							
	* Major/Moderate/Minor							
INFORMATION OF INCOME AND EXPENDITURE								

46	Occupational Pattern of Household Members:						Write	
	Name of Person	Sex	Age	Primary Source#	Durability*	Secondary Source#		Durability*
# write								
* Round the year/seasonal/when attend/own account								
47	Source of income:					Write		
	Person	Primary Income	Type*(write)	Secondary Income	Type* (write)			
	1							
	2							
* Yearly/Monthly/Daily								
48	Is the primary or secondary source of your income getting affected by the project					Yes		
						No		
49	If yes, name them:						Write	
	Person	Primary	Secondary					
	1							
	2							
INFORMATION ABOUT THE PROPOSED SUBPROJECT								
50	Have got any information regarding the proposed Project?					Yes	No	
51	If yes, from where did you hear about the Project?					Island Officers		
						FENAKA Officers		
						MOEE Officers		
						News paper		
						Other (Specify)		
52	What are positive impacts you anticipate in terms of your family and income: Please circle in applicable responses.					Better education for children		
						Better health		
						Access to resources/markets		
						Price increase in assets' value		
						Increase in farm production/sale		
						Employment and income		
						Better mobility		
						Community development		
Other (specify)								
53	What are the negative impacts you anticipate in terms of your family and income. Please circle in applicable responses.					Loss of assets and income		
						Loss of access to resources/facilities		
						Relocation		
						Shifting of assets and belongings		
						Break in cultural & social ties		
						Decrease in sales/production		
						Community disintegration		

		Other (specify)			
54	Do you have electric supply to your house?	Yes		No	√
56	What are the energy sources being using?	1			Write
		2			
57	Specific Comments (if any):				Write
58	Enumerator's Observation:				Write

Date:

Name:

Signature:

SAMPLE MONITORING INDICATORS

Type	Indicator	Examples of Variables
Process Indicator	Staffing	Number of social safeguard staff and subordinate staff enrolled in the Ministry of Environment and Energy and subproject locations Number of other line agency officials available for tasks
	Consultation and Mobilization	Number of WDC consulted at subproject islands and meetings held Grievances by type and resolution Number of field visits by project staff
	Procedures in Operation	Socioeconomic surveys, census and asset verification procedures in place Number of IR screening and categorization checklists have completed
Output Indicators; data disaggregated by sex of owner/ head of Household	Acquisition of Land	Number of agreements and land transfers (owner to the Government of Maldives) effected Coordination between Island Councils, City Councils and other line agencies Area of cultivation land acquired Area of other private land acquired Area of common/government land acquired Area of the land donated Area of the land compensated
	Trees and Crops	Number and type of private trees acquired Number and type of government/community trees acquired Crops destroyed by area, type and number of owners
	Compensation and Rehabilitation	Number of HHs affected (land, buildings, trees, crops) Number of owners assisted by type of loss Amount compensated by type and owner Number and amount of allowances paid Number of replacement houses constructed by concerned owners/contractor Number of replacement businesses constructed by concerned owners Number of owners requesting assistance with purchasing of replacement land Number of replacement land purchases effected Number of HHs and persons included for income restoration program Income restoration cost
Impact Indicator – data disaggregated by sex of owner/ head of HH	HH Earning Capacity	Employment status of economically active members Changes to income-earning activities (agriculture) – pre- and post-disturbance Changes to income-earning activities (Fishing) – pre- and post-disturbance Amount and balance of income and expenditure Range of increase land value Number of HHs received electricity supply Number of institutions received electricity supply Number of students benefited Number of cottage or small-scale industries commenced after the project Number of agri-business commenced after the project Number of WDC members participated in capacity development programs Number of executing agency staff under gone in capacity development program Number of subprojects planned Number of subprojects implemented and completed
	Capacity development	Number of WDC members participated in capacity development programs Number of executing agency staff under gone in capacity development program
	Subproject implementation	Number of subprojects planned Number of subprojects implemented and completed Number of subprojects compliance involuntary resettlement

TOR FOR INDEPENDENT THIRD PARTY FOR NEGOTIATED PURCHASE OR VOLUNTARY LAND DONATION

For any voluntary donation of land, an external independent entity will supervise and document the consultation process and validate the negotiated purchase / land donation process as per legal requirement.

TOR for Independent Third-Party Witness

An independent third party is sought to be appointed to oversee and certify the process of negotiated purchase / land donation. The third party shall be briefed about his/her expected role and deliverables by the PMU.

Eligibility: The third party shall be a representative of the community (for example, a senior government officer, a leader of the community, a representative of a local NGO/CBO), without any direct interest in the negotiation process, who is acceptable to each of the concerned parties (MEE and concerned land owner/donor).

Scope of work: The role of the third party shall be to ensure a fair and transparent process of negotiation/donation. The envisaged scope of work shall entail the following:

- (i) witness and keep a record of meetings held with the concerned parties,
- (ii) ensure there is no coercion involved in the process of negotiated purchase / land donation,
- (iii) ensure that the preferences and concerns of the land owner / donor related to access, selection of site within lands held, etc. are recorded and any stipulated conditions met,
- (iv) ensure that the negotiated purchase / land donation agreement is drafted in a fair and transparent manner,
- (v) identify and recommend mitigation measures to land owner / donor, if required,
- (vi) ensure that taxes, stamp duties and registration fees for purchased / donated land are borne by government, and
- (vii) submit a certificate as witness to the purchase / donation and transfer process.

Deliverables: The details of the meetings, and a certificate as witness to the purchase / donation process and mitigation measures to owner / donor, if any, shall be submitted by the third party to the PMU and owner/donor in the local language.

SAMPLE CERTIFICATION FORMATS

This is to certify that Mr./Ms. xxxxxxxxxxxxxxxxxxxx, (profession, designation, address) is appointed as independent third party to certify the process of negotiated purchase/donation of plot no.....area.....owned / donated by XXXXXXXXXX (names of owner), who is a signatory to this certificate. It is also placed on record that none of the signatories to this certificate have any objection to appointment of xxxx as third-party witness.

Date

Officers MEE and land donor/owner

I, _____ of _____ (address) certify that I was witness to the process of negotiated purchase / land donation (details of plot _____ from XXXXXXXXXX land owners' names).

I certify that:

1. The process of purchase / donation of the said land was transparent; the landowner(s) was/were happy to sell/donate the land for the welfare of the community.
2. No coercion was used in the purchase/donation process.
3. Land transfer costs (registration fee and stamp duty) were borne by the government and not by the owner/donor.
4. All concerns expressed by the owner/donor as agreed, were addressed and no pending issues remain.
5. The following mitigation measures were identified and implemented / provided to the land owner/donor.
6. Attached are the minutes of meetings held between project proponents and the land owner/donor, which I was witness to.

Signed/

Name

xxxxxxxxxxxxxxxxxxxxxxxx

Date: _____ Place: _____

Encl: Minutes of meetings held between land owner/donor and project proponents

SAMPLE GRIEVANCE REGISTRATION FORM

(To be available in Dhivehi and English)

The _____ Project welcomes complaints, suggestions, queries, and comments regarding project implementation. We encourage persons with grievance to provide their name and contact information to enable us to get in touch with you for clarification and feedback.

Should you choose to include your personal details but want that information to remain confidential, please inform us by writing/typing *(CONFIDENTIAL)* above your name. Thank you.

Date	Place of registration	Project Town		
		Project:		
Contact information/personal details				
Name		Gender	* Male * Female	Age
Home address				
Place				
Phone no.				
E-mail				
Complaint/suggestion/comment/question Please provide the details (who, what, where, and how) of your grievance below:				
If included as attachment/note/letter, please tick here:				
How do you want us to reach you for feedback or update on your comment/grievance?				

FOR OFFICIAL USE ONLY

Registered by: (Name of official registering grievance)	
Mode of communication: Note/letter E-mail Verbal/telephonic	
Reviewed by: (Names/positions of officials reviewing grievance)	
Action taken:	
Whether action taken disclosed:	Yes No
Means of disclosure:	

SUGGESTED RESETTLEMENT INFORMATION LEAFLET

I. Background

1. The Government of Maldives with a grant from the Asian Development Bank (ADB) is implementing the Greater Malé Environmental Improvement and Waste Management Project (the project) in the inhabited islands in the North Ari Atoll.

2. The project will establish a sustainable regional solid waste management (SWM) system in Greater Male by (i) improving collection, transfer, disposal, treatment (using advanced waste-to-energy technology), recycling, and dumpsite rehabilitation; (ii) strengthening institutional capacities for solid waste services delivery and environmental monitoring; and (iii) improving public awareness and behaviors in reduce-reuse-recycle (3R). The Project will be designed to reduce disaster risk and improve climate change resilience while creating a cleaner environment and reducing greenhouse gas emissions.

II. Executing and implementing agencies

3. The Ministry of Finance and Treasury (MOFT) will be the executing agency of the project while the Ministry of Environment and Energy (MEE) will be the implementing agency.

III. Project safeguard category as per ADB SPS, 2009

4. During project preparation stage, sites of proposed subprojects were assessed and results indicate that Project is considered safeguard category XX for involuntary resettlement, XX for environment and XX (indigenous people/small ethnic communities).

5. There are no significant land acquisition or resettlement impacts anticipated. However, Resettlement Framework has been prepared to provide guidance in the preparation of resettlement plans, if required. The basic objectives of the Resettlement Framework are to: (i) guide the executing agency and implementing agencies in properly compensating project-displaced persons; (ii) serve as binding document to ensure displaced persons will be assisted and paid compensation; and (iii) provide direction in preparing, implementing, and monitoring the resettlement plans. The executing agency and the implementing agencies will be responsible for ensuring the preparation and implementation of resettlement plans are consistent with this Resettlement Framework. The Resettlement Framework is a formally agreed document between Government of Bangladesh and ADB.

IV. Involuntary resettlement impacts of proposed subproject components

6. Proposed subproject components include XX, XXX. The Project considers involuntary resettlement¹⁶ due to (i) physical and economic displacement as a result of (a) involuntary acquisition of land, or (b) involuntary restrictions on land use or on access to legally designated parks and protected areas; (ii) permanent or temporary displacement; (iii) full or partial

¹⁶ ADB SPS, 2009 considers resettlement involuntary when the displaced persons have no right to refuse the land acquisition by the state that result in their displacement. This occurs when land is acquired through (i) expropriation by invoking the eminent domain power of the state, or (ii) land is acquired through negotiated settlement when the pricing is negotiated in a process where expropriation will be the consequence of a failure in the negotiation.

displacement; and (iv) all affected persons with land to be affected permanently or temporarily due to any project activity, including purchase and temporary use during construction.

V. Eligibility

7. Affected persons are those who are physically relocated, or lose residential land, or shelter and/or economically displaced (with loss of structure, assets, access to assets, income sources, or means of livelihood). The absence of formal and legal title to the land should not prevent the affected person to receive compensation and resettlement assistance from the project.

VI. Entitlement

8. The entitlement matrix (Table 1) of the resettlement framework and to be included in each resettlement plan and in case any impacts are identified, to be included as an appendix to this PID leaflet) summarizes the main types of losses and the corresponding nature and scope of entitlements in accordance with government and ADB policies. Where the entitlement matrix does not cover a particular impact, it can be enhanced in the resettlement plans based on the findings of the socioeconomic assessment and detailed census survey. Standards described will not be lowered but can be enhanced in the subproject resettlement plans as required.

9. The entitlement matrix specifies that any displaced person will be entitled to (i) land-for-land compensation or cash compensation (at replacement cost) for loss of land; (ii) compensation for loss of structure (residential/commercial) and other immovable assets at their replacement cost (without counting the depreciation value); (iii) compensation for loss of business/wage income; (iv) assistance for shifting of structure; (v) rebuilding and/or restoration of community resources/facilities; and (vi) livelihood/ transitional cash assistance.

VII. Institutional Arrangement

10. A project steering committee (PSC) will be set up with the Minister of MEE as chair, and a policy level representation from the MOFT, Ministry of Tourism, Ministry of Health, Ministry of Gender and Family, Local Government Authority, and Environmental Protection Agency (EPA) as members, and the project director as member and the convener of the PSC. The PSC will review overall implementation progress and recommend key policy decisions.

11. A dedicated full-time project management unit (PMU) will be established within the MEE. The PMU will be strengthened with external experts in the areas of finance, procurement, technical areas, and contract management. The PMU will work closely with Island Councils for the community-based outer island waste management systems targeting poor and women.

VIII. Grievance Redress Mechanism

12. The project grievance redress mechanism (GRM) will receive and facilitate the resolution of affected persons' concerns, complaints, and grievances on negotiated/voluntary land donation or involuntary land acquisition, relocation, income restoration, environmental management and other construction and operation related issues. The GRM is accessible to all affected persons to address their concerns grievances and issues effectively and swiftly, in accordance with ADB SPS. In case of any grievance, the following persons may be contacted and acknowledgement / confirmation on receipt and registration of grievance obtained: XXXXXXXX (provide name, designation and contact number).

IX. Disclosure

13. The project resettlement framework and other relevant documents will be made available at public locations in the project sites and posted on the websites of MEE and ADB. The consultation process will be continued and expanded during the project implementation to ensure stakeholders participate fully in project execution, as well as to implement comprehensive information, education, and communication plan.

14. Relevant information from the Resettlement Framework/resettlement plan translated to Dhivehi will be made available at (i) offices of MOFT and MEE, (ii) area offices, (iii) consultant teams' offices and (iv) contractor's campsites. It will be ensured that the hard copies of this resettlement plan are kept at places which are conveniently accessible to people, as a means to disclose the document and at the same time creating wider public awareness. An electronic version of the Resettlement Framework/resettlement plan will be placed in the official website of MEE, and ADB's website after approval by ADB.

X. Monitoring and Reporting

15. Monitoring of a development project implemented with certain goals and objectives in general, needs to assess the output, effects and impact of the strategies. Therefore, monitoring is a major part of the resettlement management system to ensure its goals and objectives are adequately met. Resettlement plan implementation will be monitored internally. The safeguards staff within the PMU will monitor resettlement plan implementation with support of WAMCO and EA.

16. The project safeguard specialist will prepare semi-annual progress reports and submit them to the PMU. The Executing Agency will prepare semi-annual monitoring reports and submit to ADB. These reports will describe the progress of the implementation of resettlement activities and compliance issues, if any, and corrective actions taken to address them. These reports will closely follow the involuntary resettlement monitoring indicators agreed at the time of resettlement plan approval