

# Environmental Impact Assessment

---

Project Number: 53178-001  
May 2019

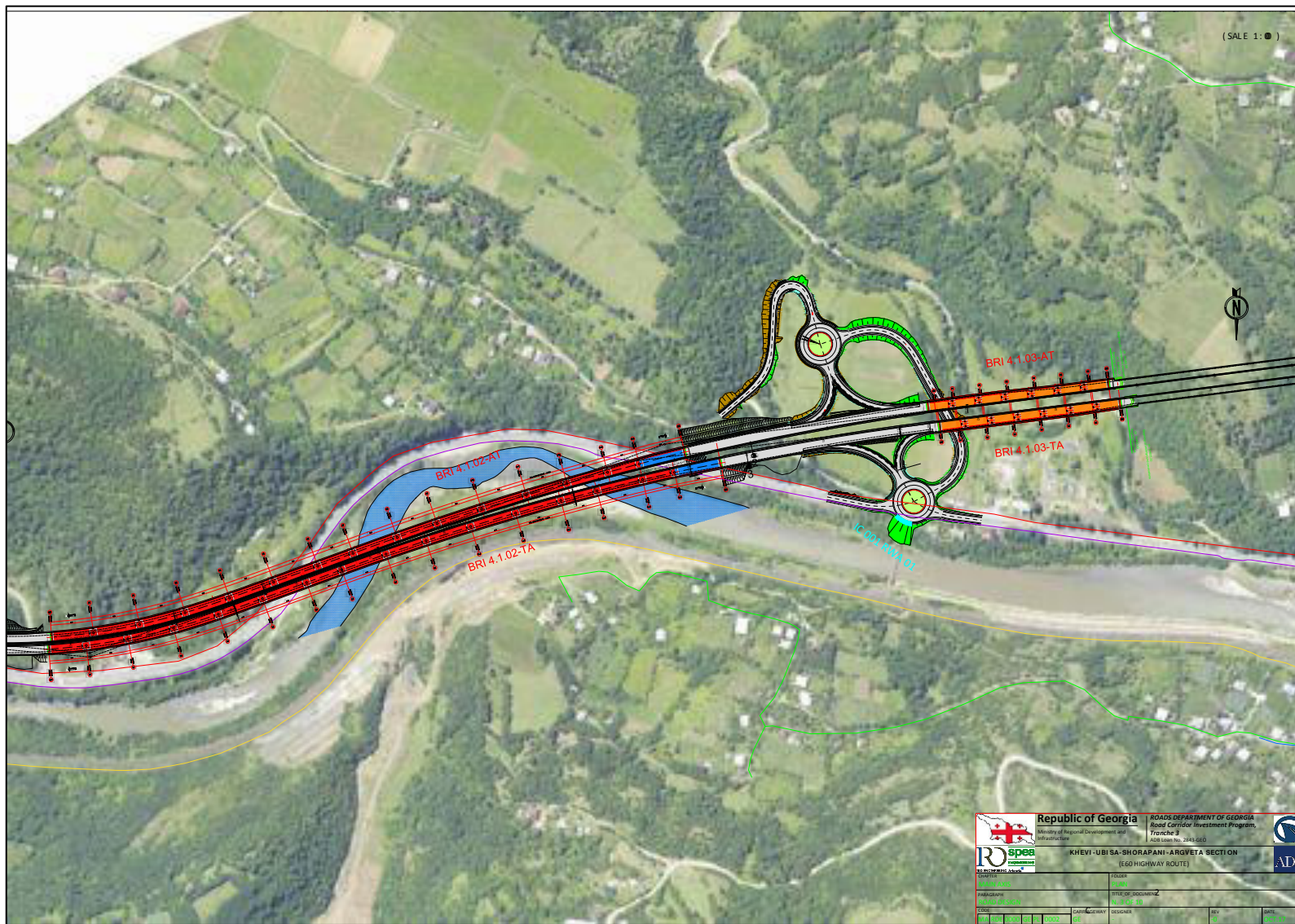
## GEO: East–West Highway (Shorapani–Argveta Section) Improvement Project

### Part I (Section A)

This environmental impact assessment is a document of the borrower. The views expressed herein do not necessarily represent those of ADB's Board of Directors, Management, or staff, and may be preliminary in nature. Your attention is directed to the [“terms of use”](#) section on ADB's website.

In preparing any country program or strategy, financing any project, or by making any designation of or reference to a particular territory or geographic area in this document, the Asian Development Bank does not intend to make any judgments as to the legal or other status of any territory or area.

Figure 7: Project Road (KM2.1 – 3.7)





**Figure 8: Project Road – KM3.7 – 5.5**

