

Environmental Impact Assessment

Project Number: 53178-001
May 2019

GEO: East–West Highway (Shorapani–Argveta
Section) Improvement Project

Part I (Section B)

This environmental impact assessment is a document of the borrower. The views expressed herein do not necessarily represent those of ADB's Board of Directors, Management, or staff, and may be preliminary in nature. Your attention is directed to the [“terms of use”](#) section on ADB's website.

In preparing any country program or strategy, financing any project, or by making any designation of or reference to a particular territory or geographic area in this document, the Asian Development Bank does not intend to make any judgments as to the legal or other status of any territory or area.

Figure 10: Project Road (KM7.0 – 8.7)



Figure 11: Project Road (KM8.7 – 10.3)

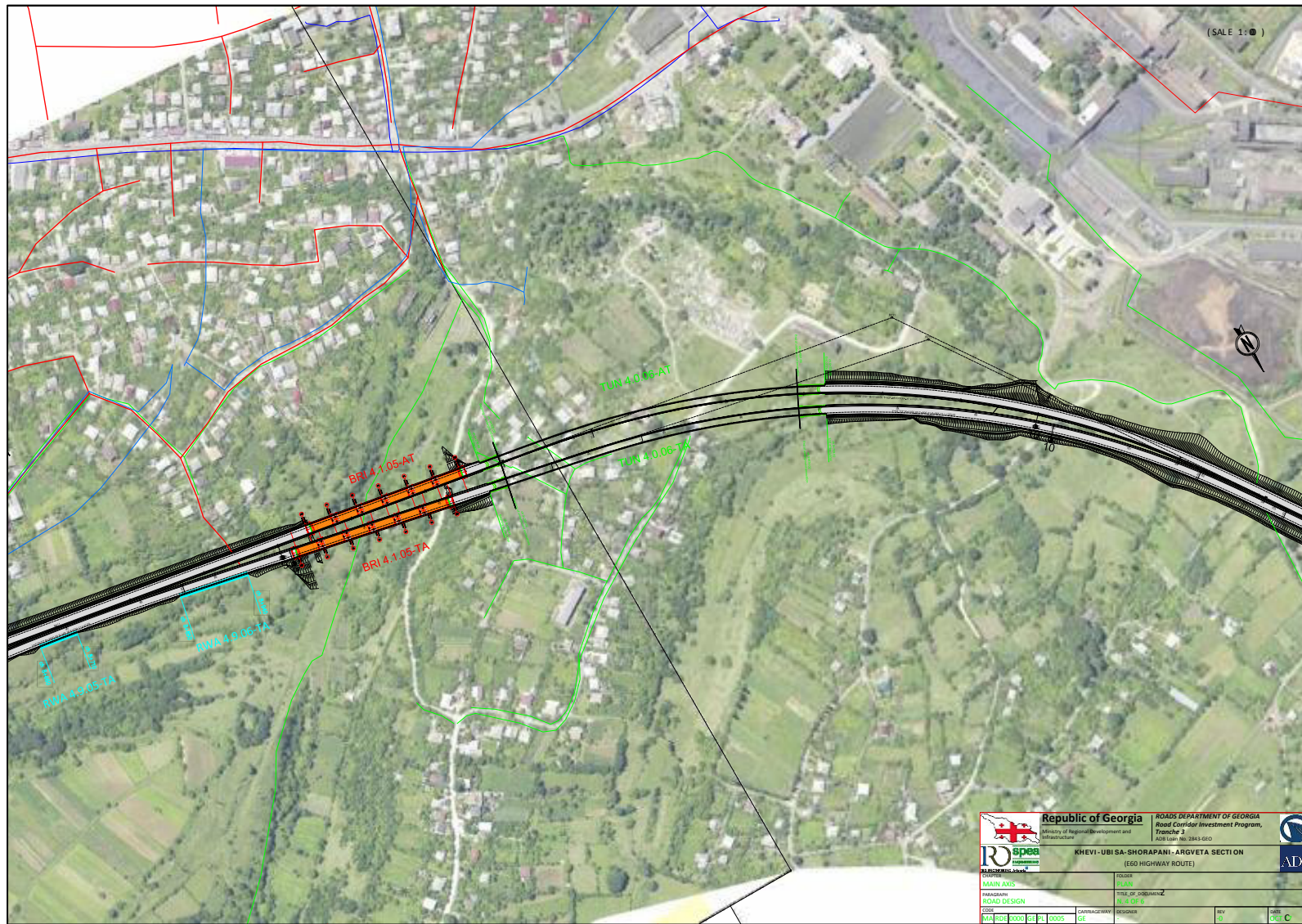


Figure 12: Project Road (KM10.0-11.6)

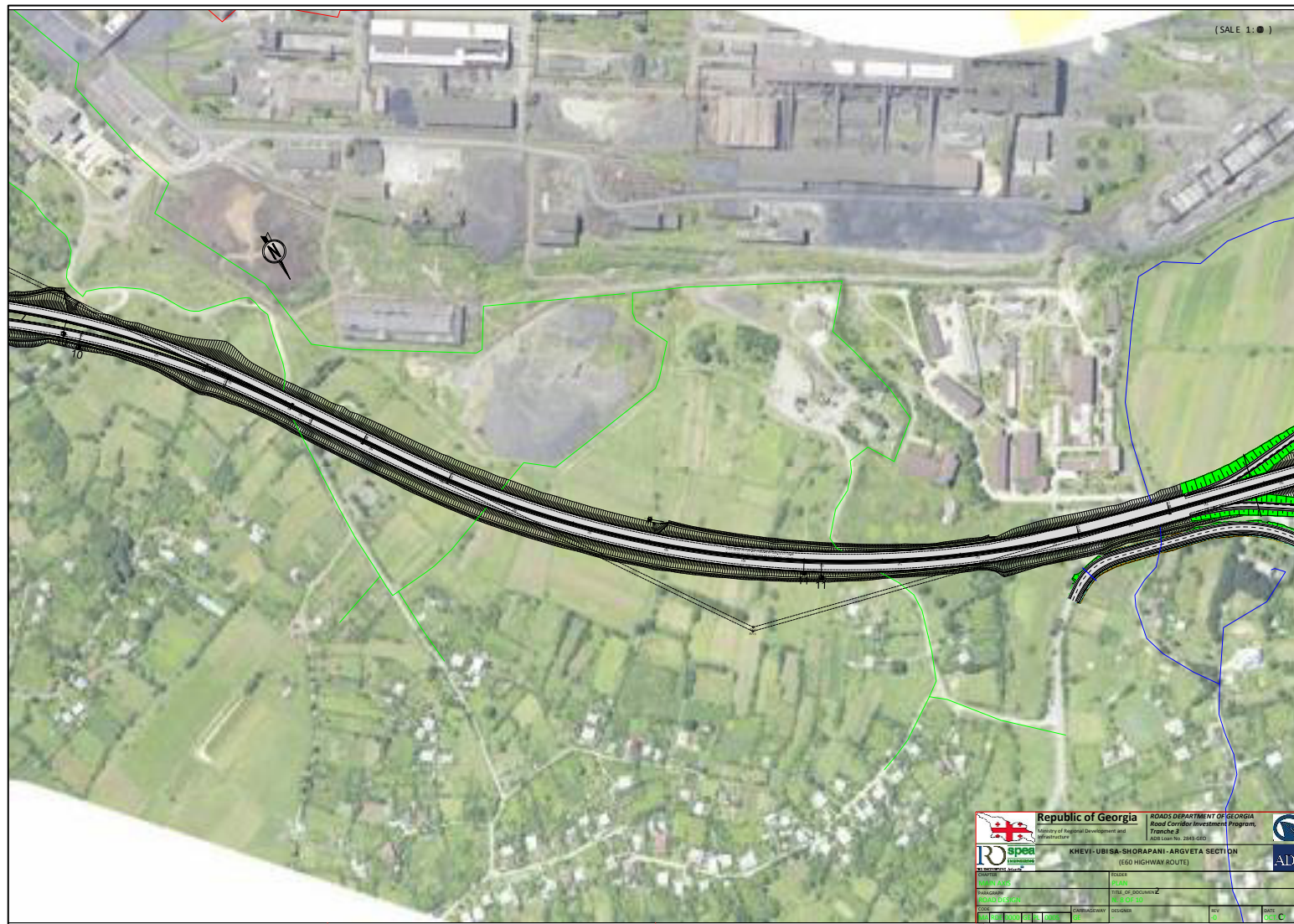


Figure 13: Project Road – KM11.5 – 13.0

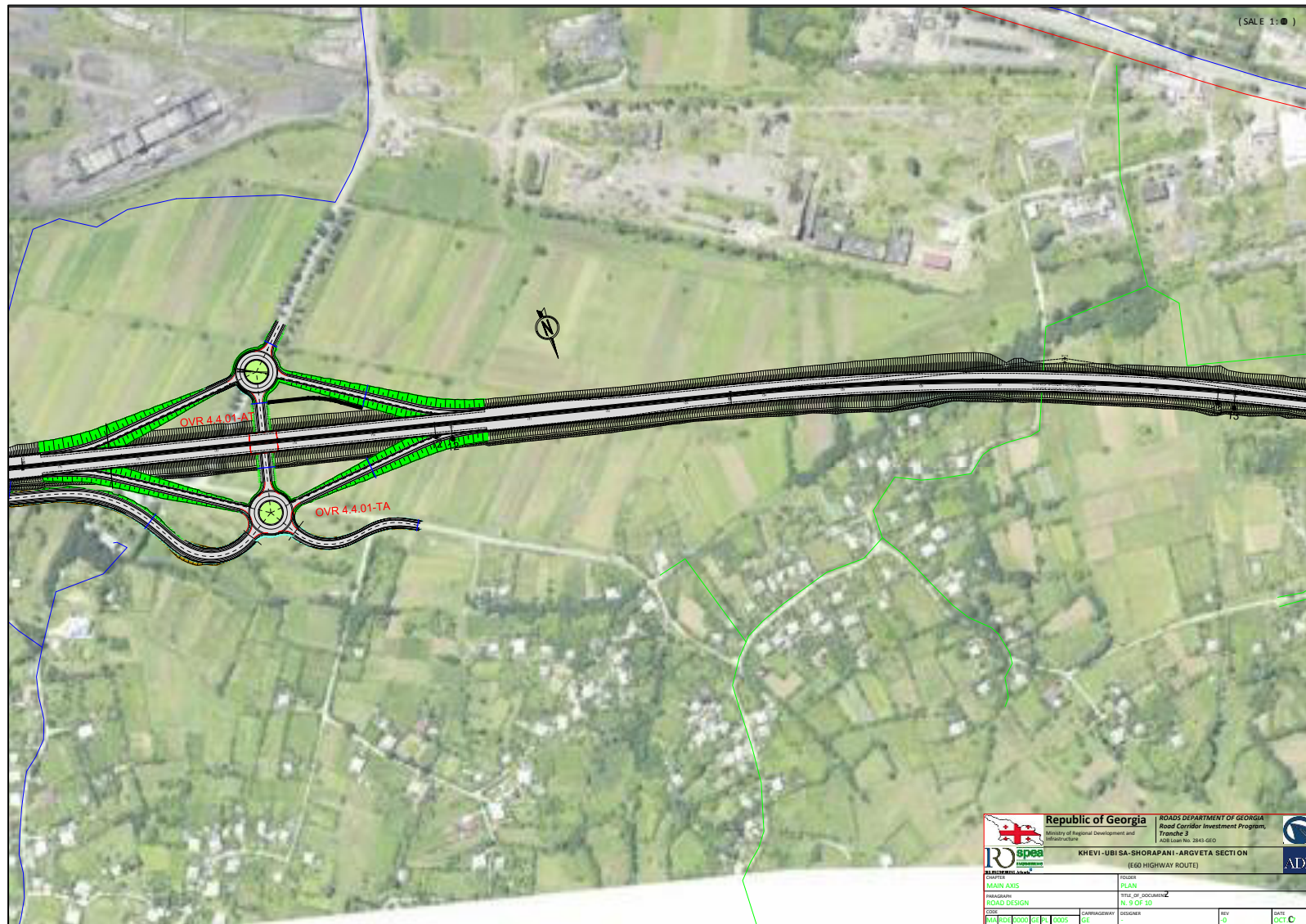


Figure 14: Project Road – KM13.0 – 14.7



Figure 15: F4 Environmental Setting



KMO - The F4 section starts on the south bank of the Dzirula river, approximately 8km east of Zestaphoni and opposite the settlement of Kveda Tseva. The south bank of the river is dominated by forest. However, the start of section F4 almost immediately disappears into a set of two tunnels thereby limiting impacts to vegetation. The road emerges from the tunnel to broadly follow the alignment of the existing road just to its south. The road will pass just behind the restaurant pictured opposite, one of very few properties in this portion of the road. The road then crosses back and forth across the Dzirula river before coming to a proposed interchange on the outskirts of Shorapani. The photo above is taken looking east.