

## INDIA

## Jaipur Metro Rail Line



Jaipur, capital of the state of Rajasthan, is India's 10th largest city and one of its fastest growing. It is a center of both traditional and modern industries, and is a very popular tourist destination for cultural heritage and historic architecture. Fast-paced industrial and commercial development there has resulted in a steep rise in travel demand, but the city's existing public transport infrastructure is inadequate in capacity and service.

With the growing economy, passengers are shifting to private modes of transport, evident in the rise in vehicle ownership and aggravating congestion and pollution. The modal share for public transport was 19% in 2009—one of the lowest in cities with more than 3 million inhabitants. In 2009, the Jaipur Development Authority developed a comprehensive mobility plan, seeking to provide an overall transport plan up to 2031 that emphasizes the preeminence of public transport for the movement of people—not just vehicles—and integrating land use with transport networks.

To meet increasing mobility requirements and avoid further congestion, high-capacity metro lines were recommended along the city's two backbone arterial corridors. These consisted of Line 1 for the 12-kilometer (km) east-west corridor from Mansarovar to Badi Chopar, and Line 2 for the 23-km north-south corridor from Ambabadi to Sitapura. These metro lines are to mainly run elevated along the major arterial roads and underground beneath the city's busy central zone.

On 20 November 2013, the Asian Development Bank (ADB) approved the Jaipur Metro Rail Line. The project will build Line 1-Phase B of the metro rail network in Jaipur, consisting of underground rail infrastructure of 2.3 km and two stations. It will extend Line 1-Phase A, which is being undertaken by the government of Rajasthan, and is critical to ensuring that the combined overall impact is optimized and benefits are reaped in a timely manner. The project also includes support to study and update a future development plan for Line 2.

## PROJECT FEATURES

The project is expected to yield significant development impacts since economic growth and delivery of infrastructure and social services to the population are important in reducing poverty. It supports the Jawaharlal Nehru National Urban Renewal Mission, which seeks to bring about comprehensive improvements in urban infrastructure to provide easy and sustainable flow of goods and people in order to support higher levels of economic activity.

**Increased access.** As part of the project's poverty and social assessment, households were surveyed and focus group discussions held. The majority of people indicated that the project will increase economic and employment opportunities by improving linkages to markets, production centers, and public and social service facilities, while providing a safe and reliable mode of public transportation.

The improved access to markets and basic social and other services will contribute to improved health and education outcomes, particularly among women and children.

**Better transport facilities.** The metro rail will be a safe, comfortable, and reliable mode of public transportation, reducing journey time considerably and providing better access to markets, workplaces, higher education, health facilities, and employment opportunities. Reserved seats for women, the elderly, and persons with disabilities are some of the features planned.

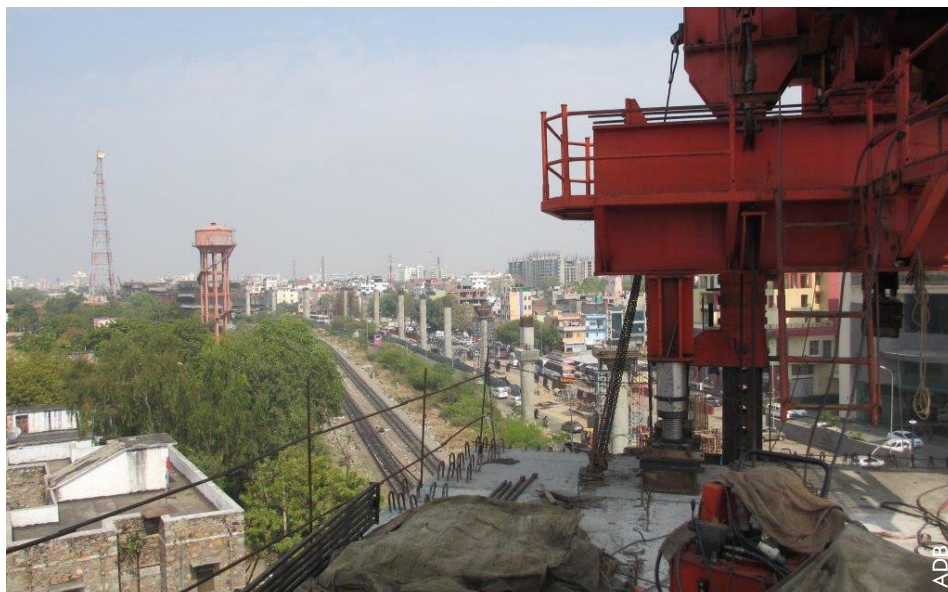
For the convenience and safety of all passengers, especially women and the vulnerable, station facilities will include public announcement systems in English and Hindi; electronic changeable message signs on the platform to announce the arrival of the next train; closed circuit television to monitor security; an automatic fare control system with enclosed tickets; and escalators, lifts, emergency lights, ventilation, and exits.

**Increased employment.** The proposed project will also provide job opportunities for women in the operation and maintenance of the metro rail systems, such as ticketing staff and station personnel, as well as in the technical aspects of driving the trains and other engineering-related jobs.

The metro rail network is expected to provide mass rapid transit capacity for the city's major mobility corridors, aiming to reverse the rising shift to private cars and achieve a vision of an

improved public transport system in Jaipur— optimizing general mobility, enhancing quality of life, and making the city more pleasant to live and work in. The outcome of the project

supports India's National Urban Transport Policy and the strategic objectives of ADB in the transport sector, which aim to increase movement of people and goods in a more efficient, safe, and sustainable manner.



The project will increase economic and employment opportunities by improving linkages to health facilities.



The metro rail will be a safe, comfortable, and reliable mode of public transportation, reducing journey time considerably.

The project is in line with the strategic directions of ADB's South Asia Department. The strategy focuses on sustainable infrastructure, climate change mitigation and adaptation, human development, regional cooperation and integration, public-private partnership, and good governance.

The metro rail network is expected to provide mass rapid transit capacity for the city's major mobility corridors

## PROJECT AT A GLANCE

**Cost and financing:** Ordinary capital resources, \$176 million; Counterpart, \$83 million

**Project approval date:** 20 November 2013

**Project themes:** Economic growth, environmental sustainability

**Status of project implementation:** Ongoing

**Executing agency:** Government of Rajasthan acting through the Urban Development and Housing Department, and Jaipur Metro Rail

## FOR INFORMATION

Transport and Communications Division  
South Asia Department  
Project Officer: Dong-Kyu Lee  
dklee@adb.org

Link to South Asia Project Briefs:  
<http://www.adb.org/publications/series/south-asia-project-briefs>

Sources: Project Data Sheet. <http://www.adb.org/projects/46417-001/main>; ADB. 2013. *Report and Recommendation of the President: Proposed Loan for the Jaipur Metro Rail Line 1-Phase B Project in India*. Manila. <http://www.adb.org/projects/documents/jaipur-metro-rail-line-1-phase-b-project-rrp>



Creative Commons Attribution 3.0 IGO license (CC BY 3.0 IGO)

© 2015 ADB. The CC license does not apply to non-ADB copyright materials in this publication.

Publication Stock No. ARM146973