

CONTENT

1. INTRODUCTION	3
2. ACTUAL ROUTING OVERHEAD LINE 115 KV PELIGRE	3
2.1. Overhead line Péligre – P34.....	3
2.1.1. Routing between P1 – P19	3
2.1.2. Routing between P19 – P26.....	4
2.1.3. Routing between P26 – P34.....	4
2.2. Actual routing overhead line P34 – P47	5
2.2.1. Routing between P34 – P42.....	5
2.2.2. Routing between P42 – P47.....	5
2.3. Actual routing overhead line P47 – P152	6
2.3.1. Routing between P47 – P50.....	6
2.3.2. Routing between P50 – P58.....	6
2.3.3. Routing between P58 – P68.....	7
2.3.4. Routing between P68 – P77.....	7
2.3.5. Routing between P77 – P84.....	8
2.3.6. Routing between P84 – P89.....	8
2.3.7. Routing between P89 – P95.....	9
2.3.8. Routing between P95 – P99.....	9
2.3.9. Routing between P99 – P106.....	10
2.3.10. Routing between P106 – P119	10
2.3.11. Routing between P119 – P131	11
2.3.12. Routing between P131 – P141	11
2.3.13. Routing between P141 – P146	12
2.3.14. Routing between P146 – P152	12
2.4. Actual routing overhead line P152 – P195	13
2.4.1. Routing between P152 – P161	13
2.4.2. Routing between P161 – P170	13
2.4.3. Routing between P170 – P180	14

2.4.4.	Routing between P180 – P188	14
2.4.5.	Routing between P188 – P195	15
3.	RE-ROUTING OVERHEAD LINE	15
3.1.	OHL Bypass at Mirebalais (4,9 km).....	15
3.2.	UGC Nouveau Delmas – Tabarre (2,53 km)	16
3.3.	UGC Nouveau Delmas – Pn (1,32 km) and OHL Pn – Tabarre (2,54 km) ...	17
3.4.	UGC Tabarre – P152N (6,89 km)	18
3.5.	UGC Tabarre – P170N (2,97 km)	19
3.6.	UGC Tabarre – P175N (1,7 km) and OHL P175N – P167N (1,8 km).....	21
3.7.	UGC Tabarre – P175N (1,7 km) and OHL P175N – P167N (1,8 km) and UGC P167N – P152N (3,35 km).....	22

1. INTRODUCTION

This document concerns the routing of the overhead line 115 kV between the Péligre Power Plant and P195 with the different alternative routing sections in overhead or underground. The options are represented on drawing HAI_OHL_1258444_000_00 in attachment.

OHL (yellow) = Existing overhead line

OHL (green) = New routing overhead line

UGC (blue) = Underground link

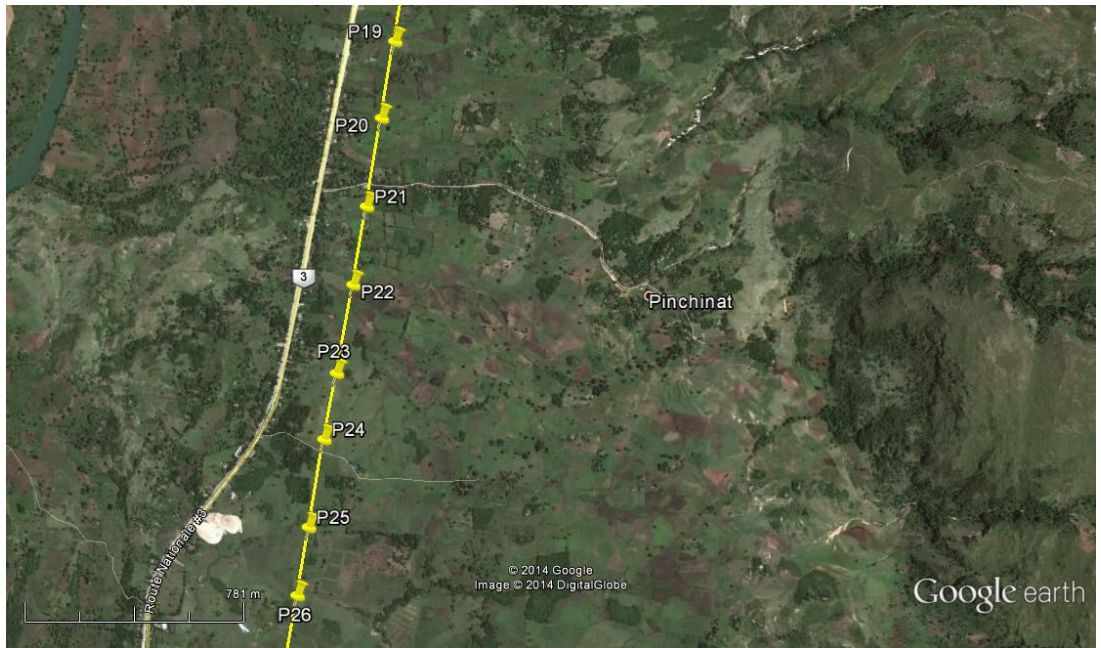
2. ACTUAL ROUTING OVERHEAD LINE 115 KV PELIGRE

2.1. Overhead line Péligre – P34

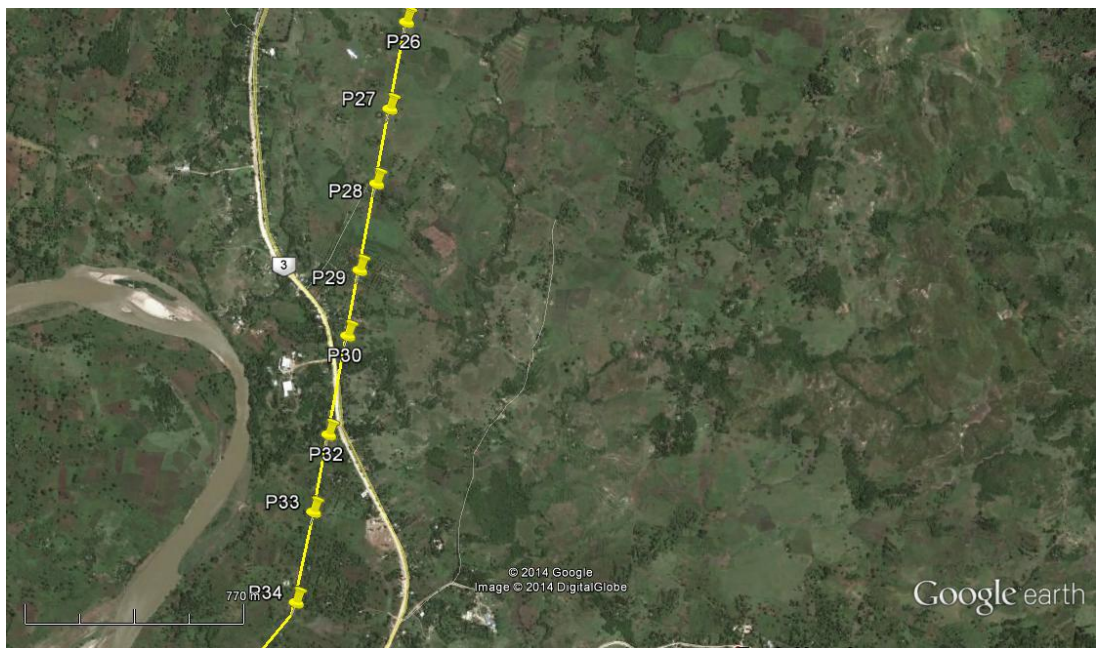
2.1.1. Routing between P1 – P19



2.1.2. Routing between P19 – P26



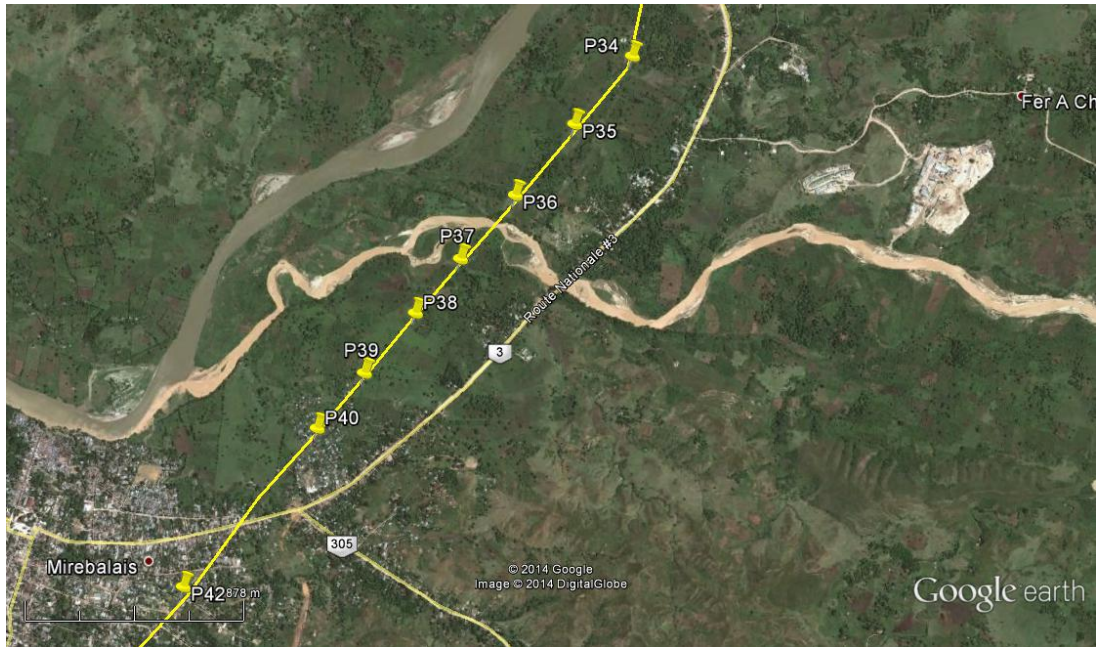
2.1.3. Routing between P26 – P34



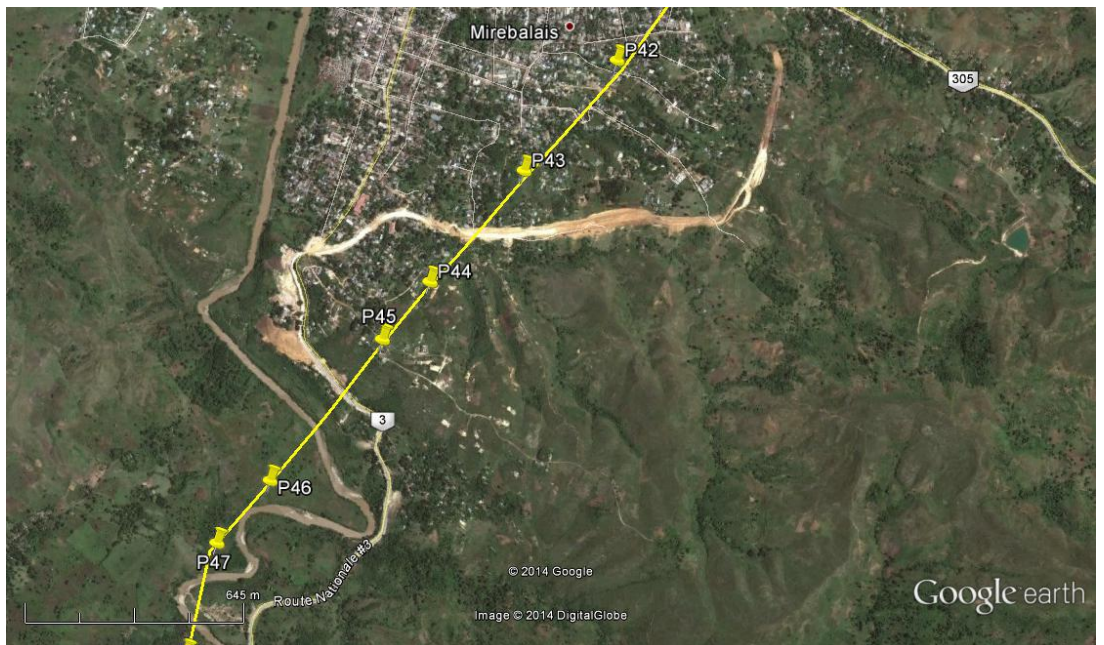
This document is the property of Tractebel Engineering S.A. Any duplication or transmission to third parties is forbidden without prior written approval.

2.2. Actual routing overhead line P34 – P47

2.2.1. Routing between P34 – P42

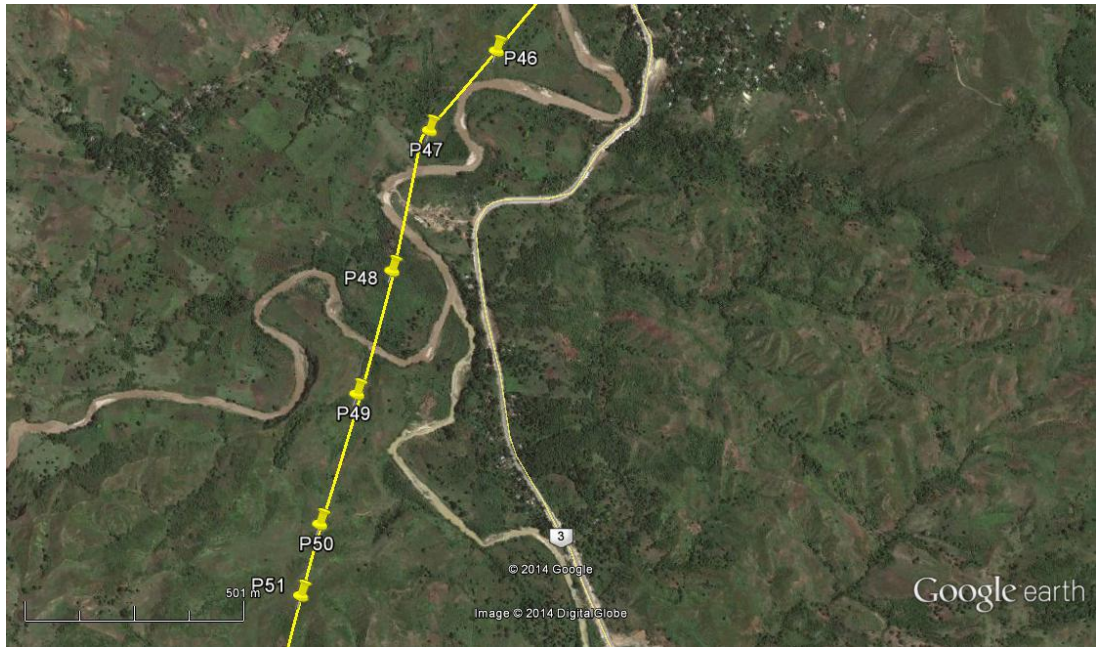


2.2.2. Routing between P42 – P47

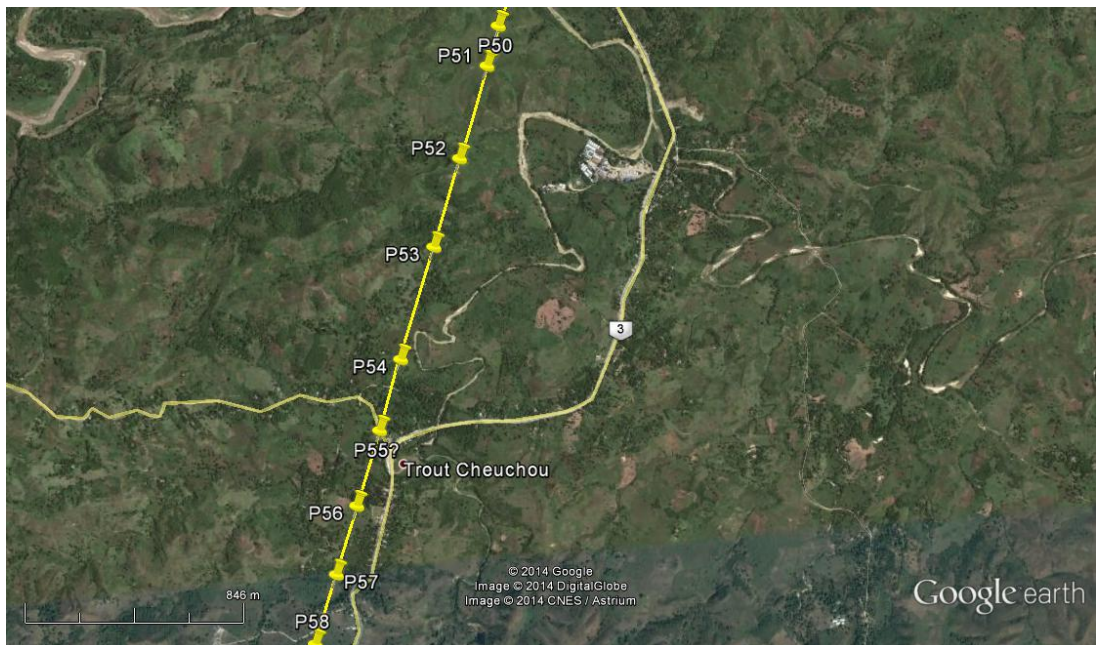


2.3. Actual routing overhead line P47 – P152

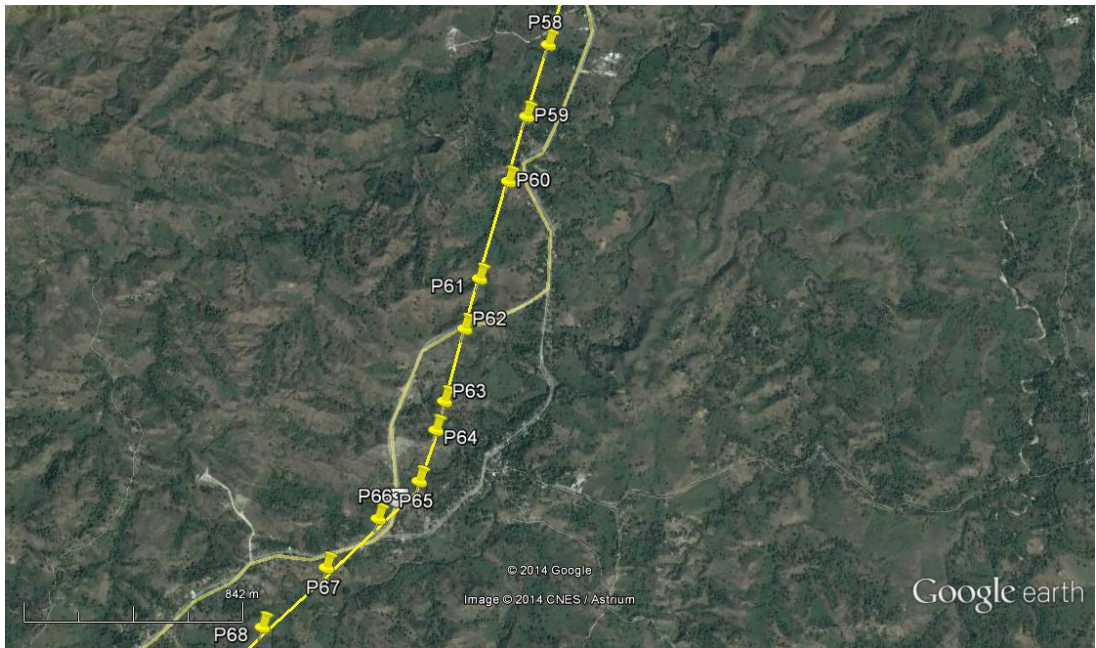
2.3.1. Routing between P47 – P50



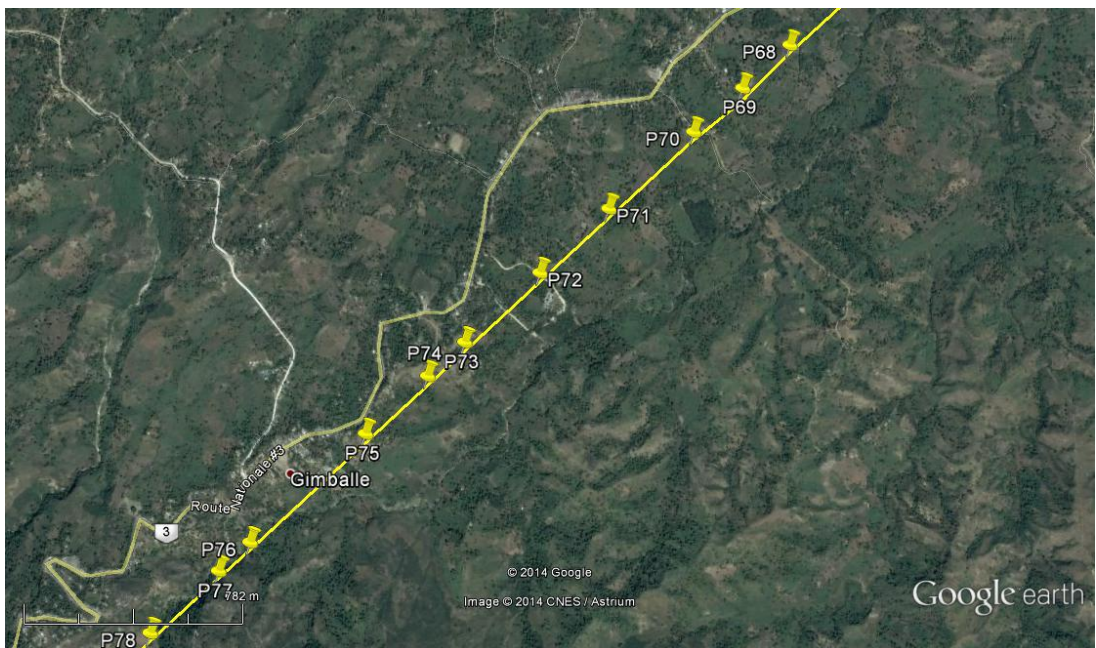
2.3.2. Routing between P50 – P58



2.3.3. Routing between P58 – P68

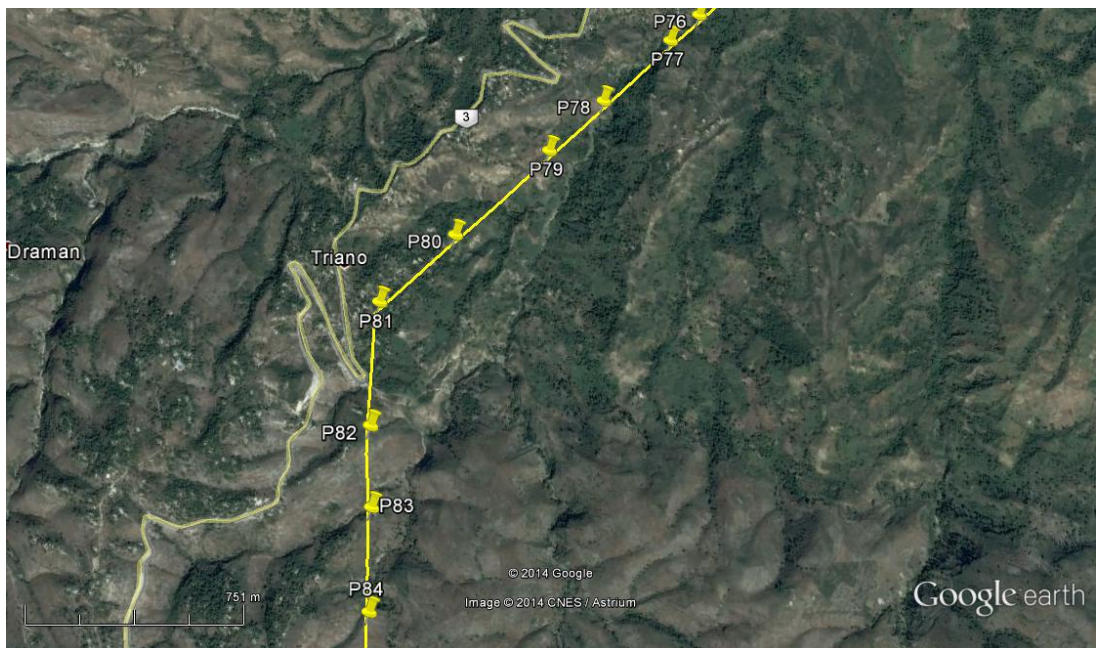


2.3.4. Routing between P68 – P77

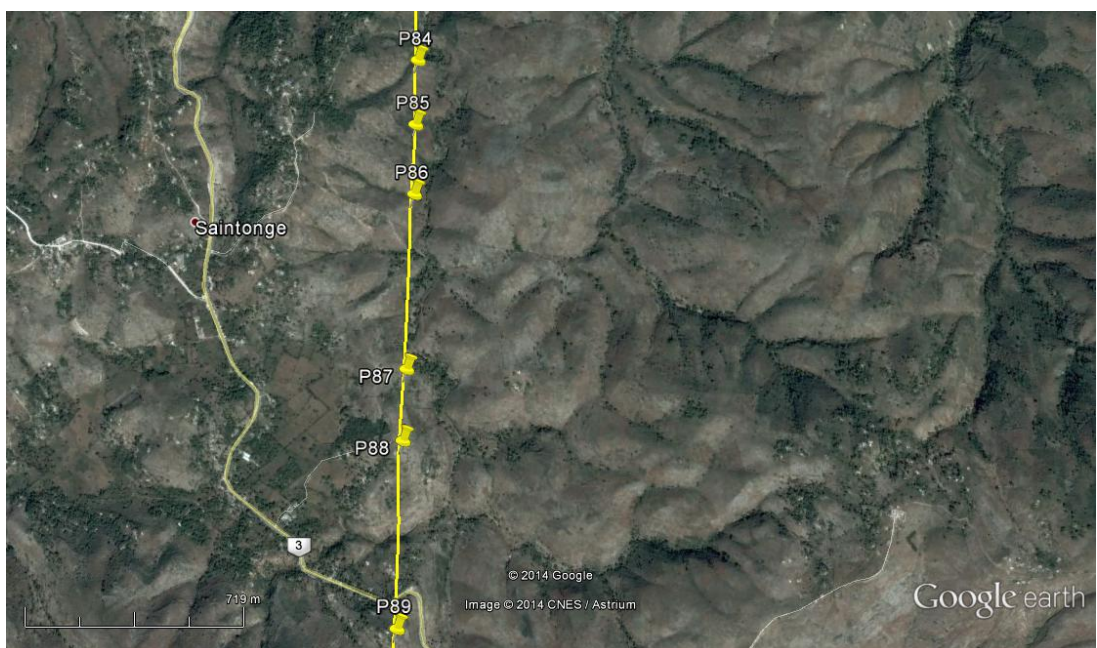


This document is the property of Tractebel Engineering S.A. Any duplication or transmission to third parties is forbidden without prior written approval

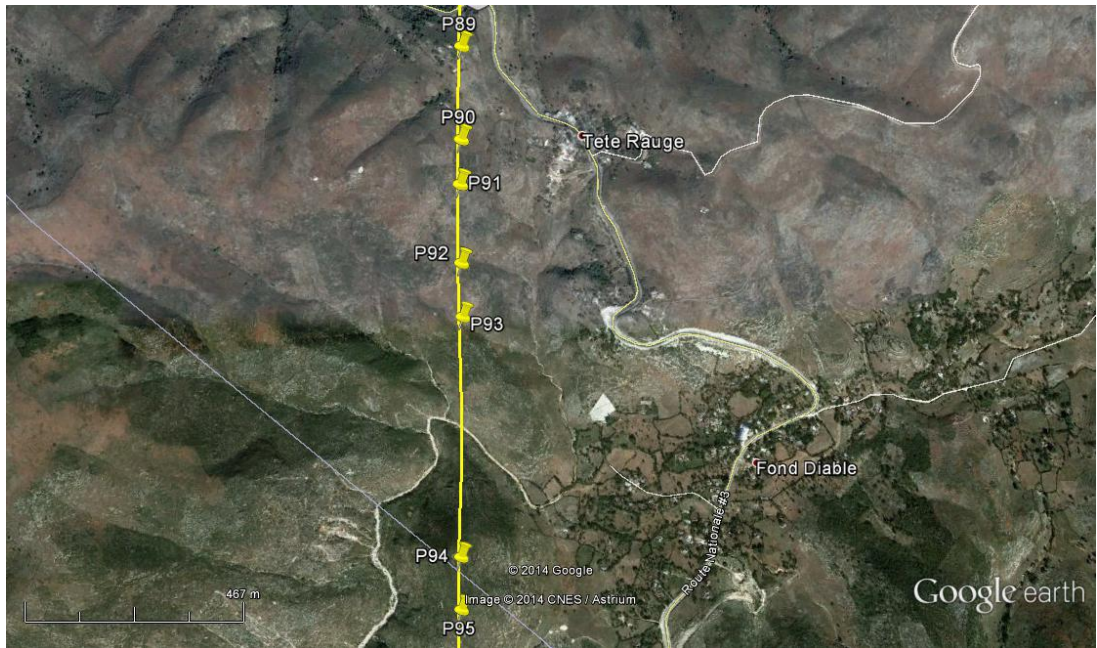
2.3.5. Routing between P77 – P84



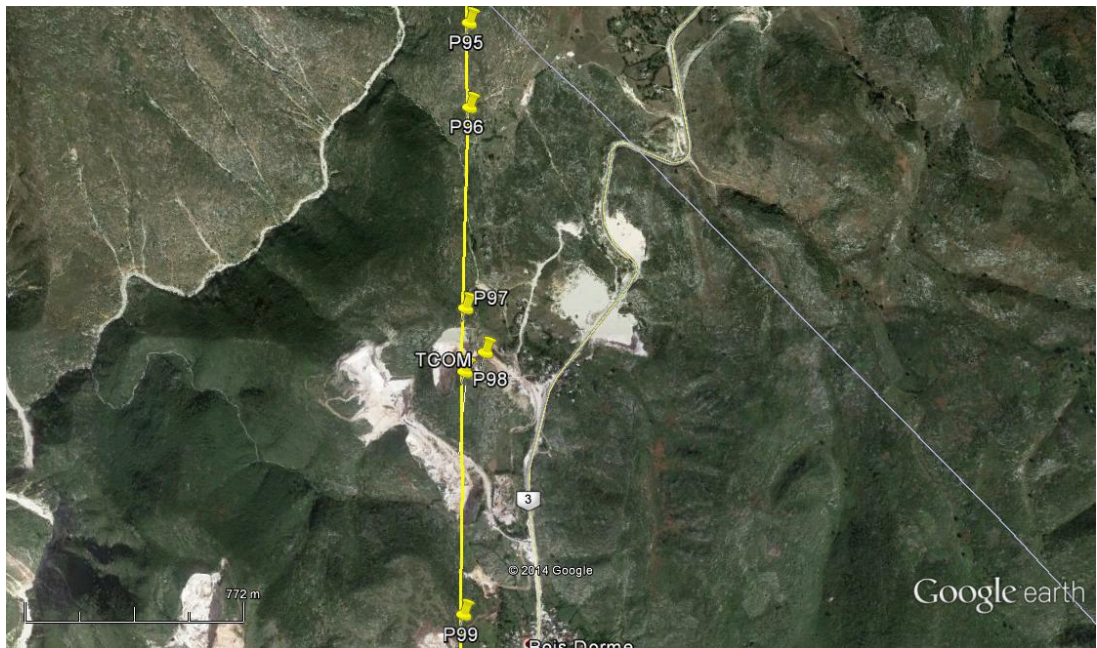
2.3.6. Routing between P84 – P89



2.3.7. Routing between P89 – P95



2.3.8. Routing between P95 – P99



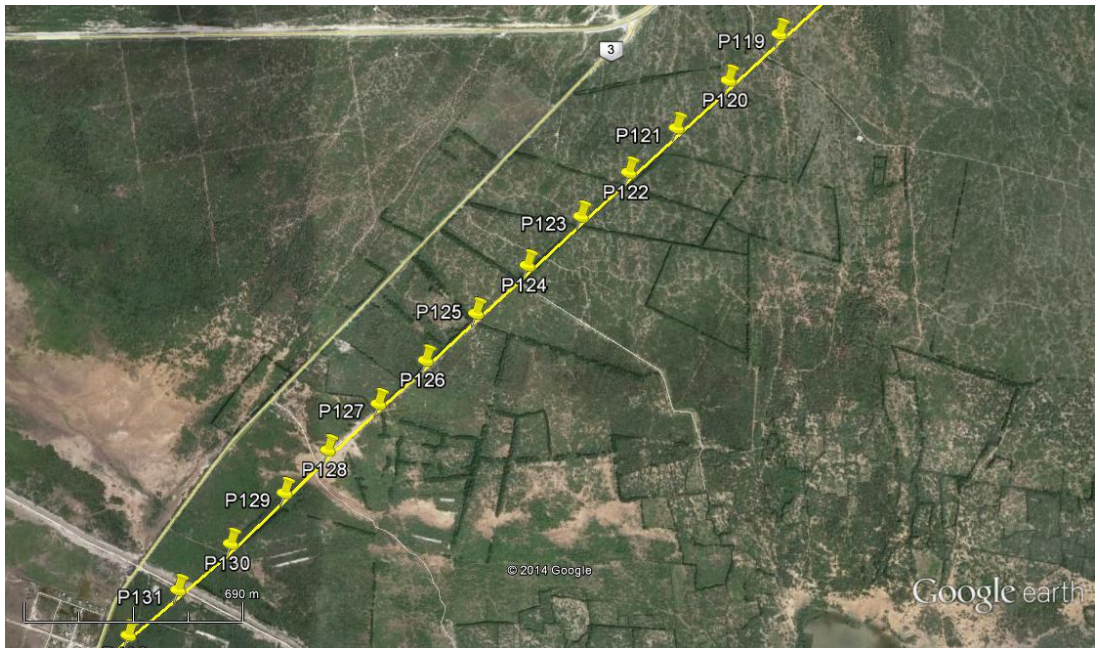
2.3.9. Routing between P99 – P106



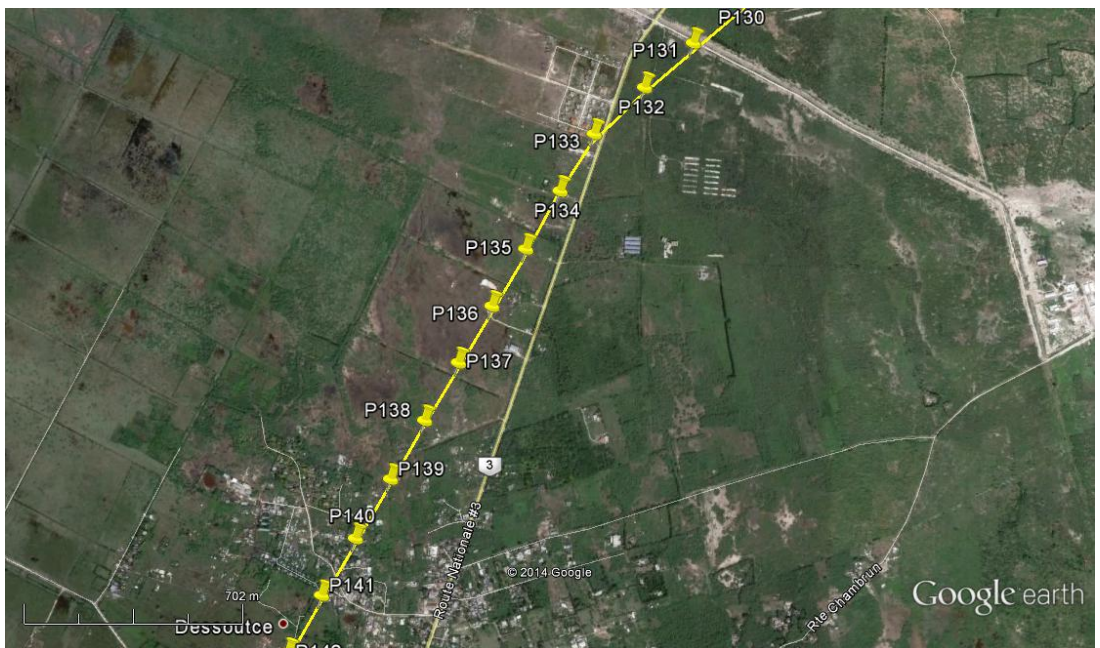
2.3.10. Routing between P106 – P119



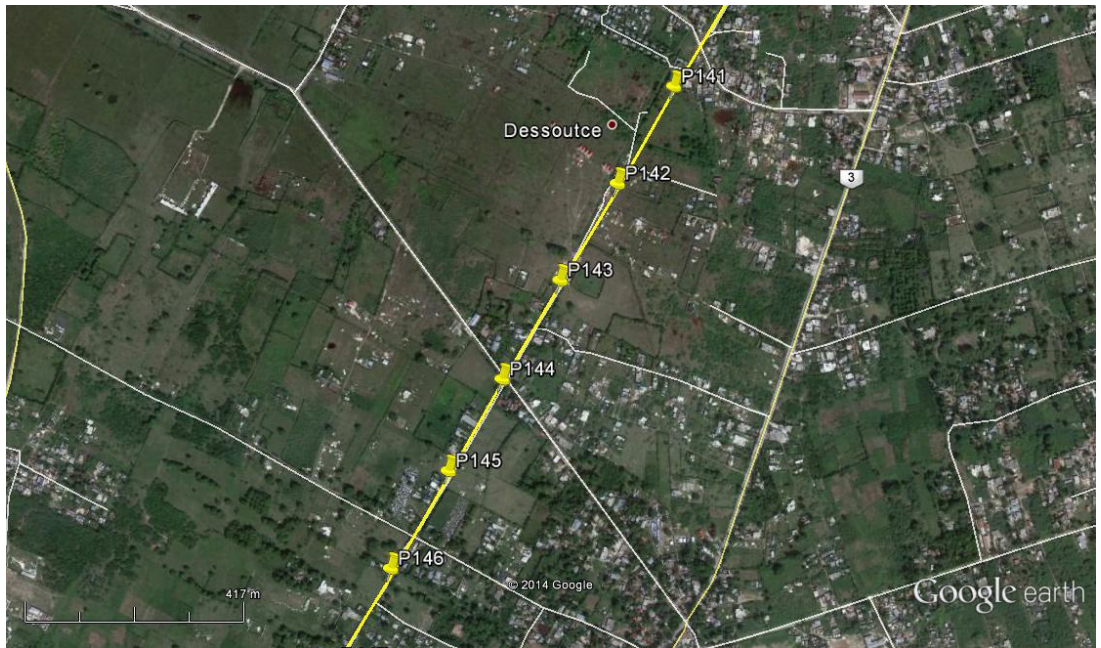
2.3.11. Routing between P119 – P131



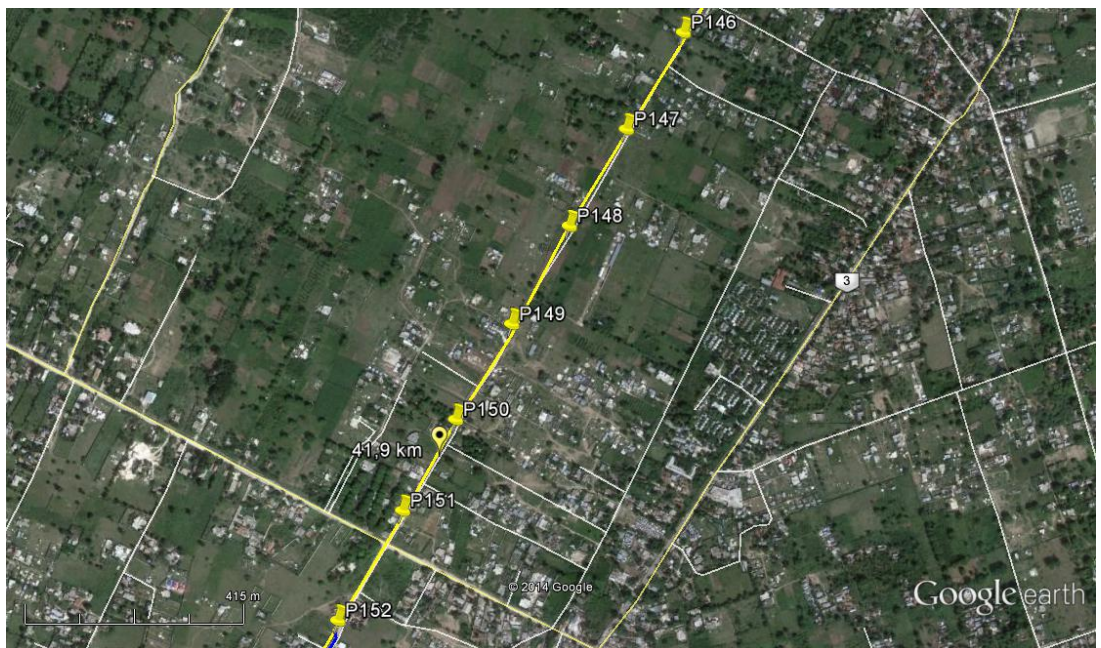
2.3.12. Routing between P131 – P141



2.3.13. Routing between P141 – P146

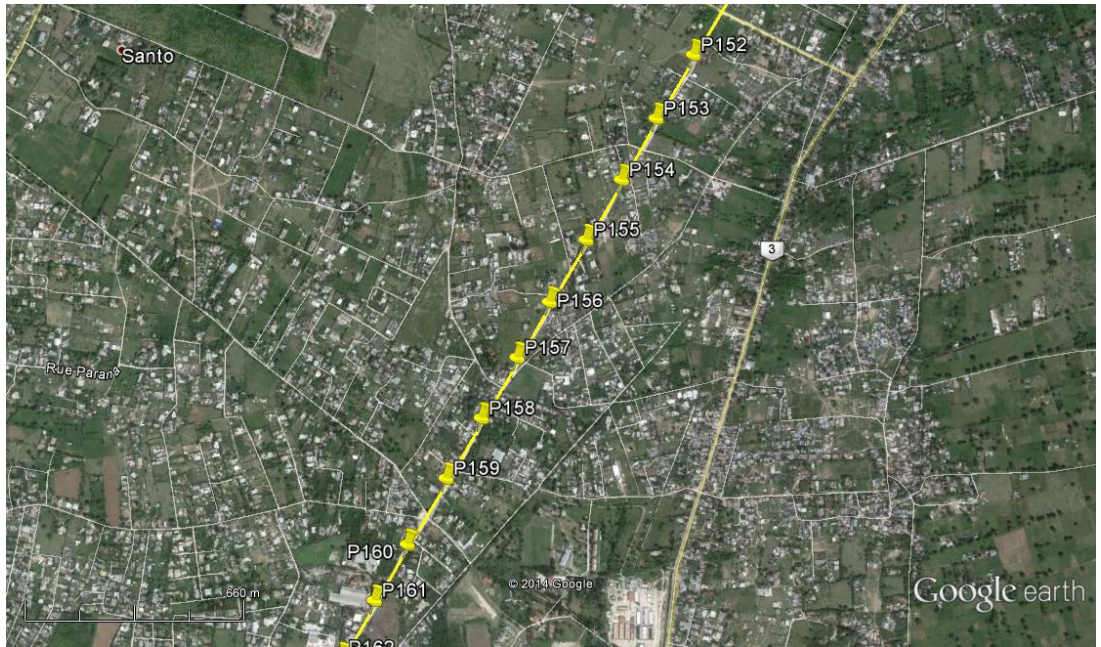


2.3.14. Routing between P146 – P152

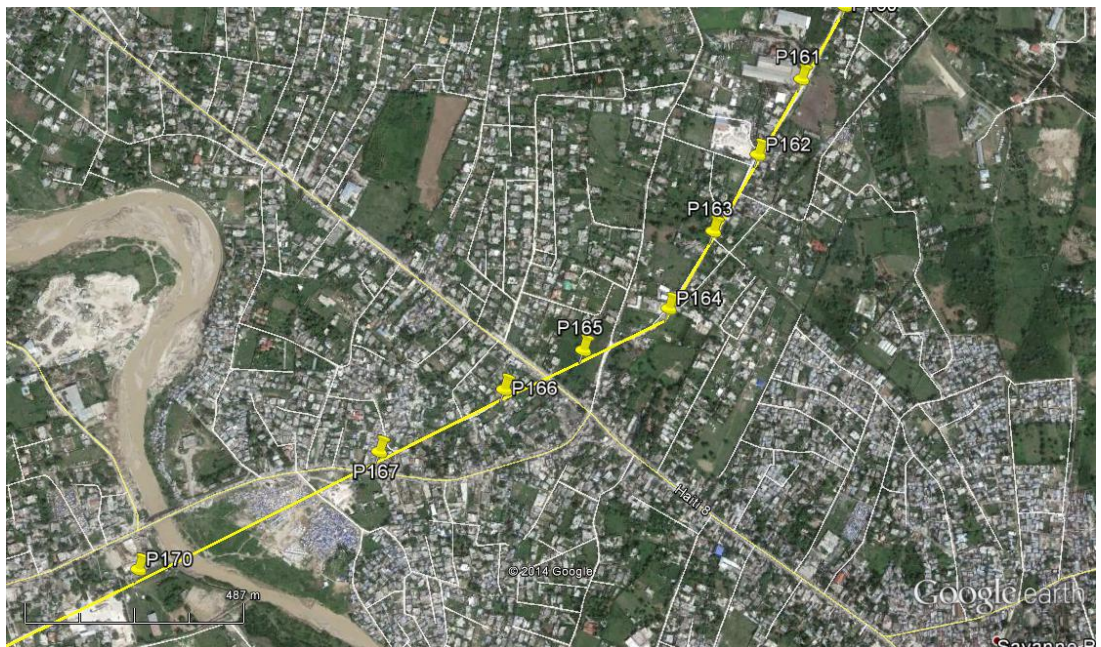


2.4. Actual routing overhead line P152 – P195

2.4.1. Routing between P152 – P161



2.4.2. Routing between P161 – P170



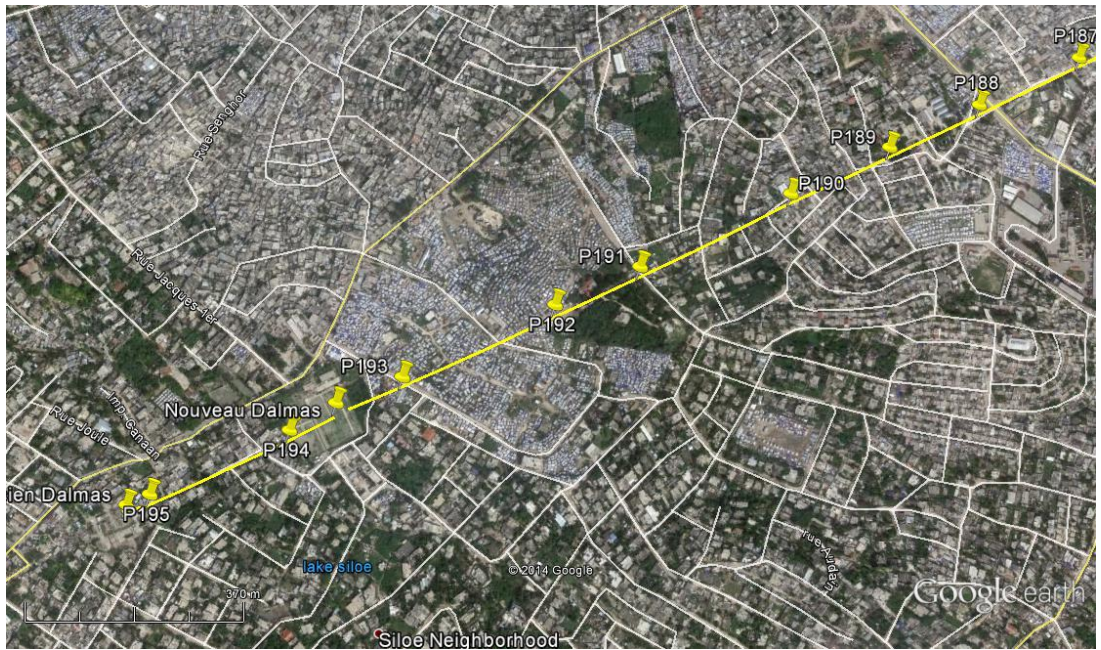
2.4.3. Routing between P170 – P180



2.4.4. Routing between P180 – P188

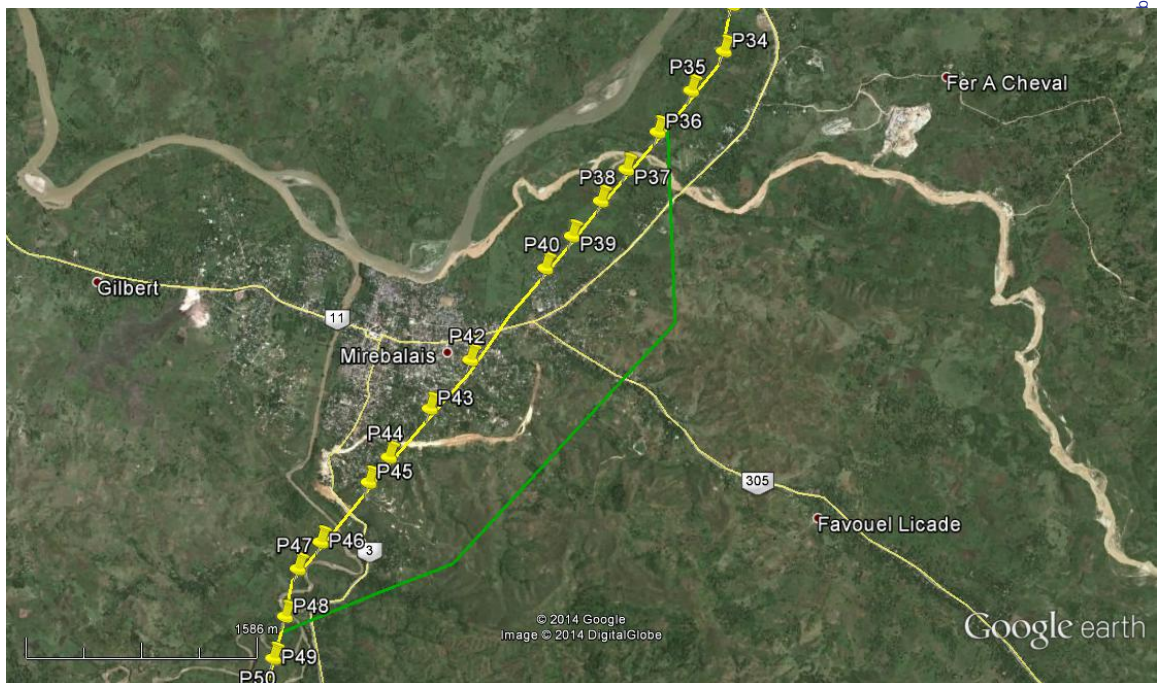


2.4.5. Routing between P188 – P195

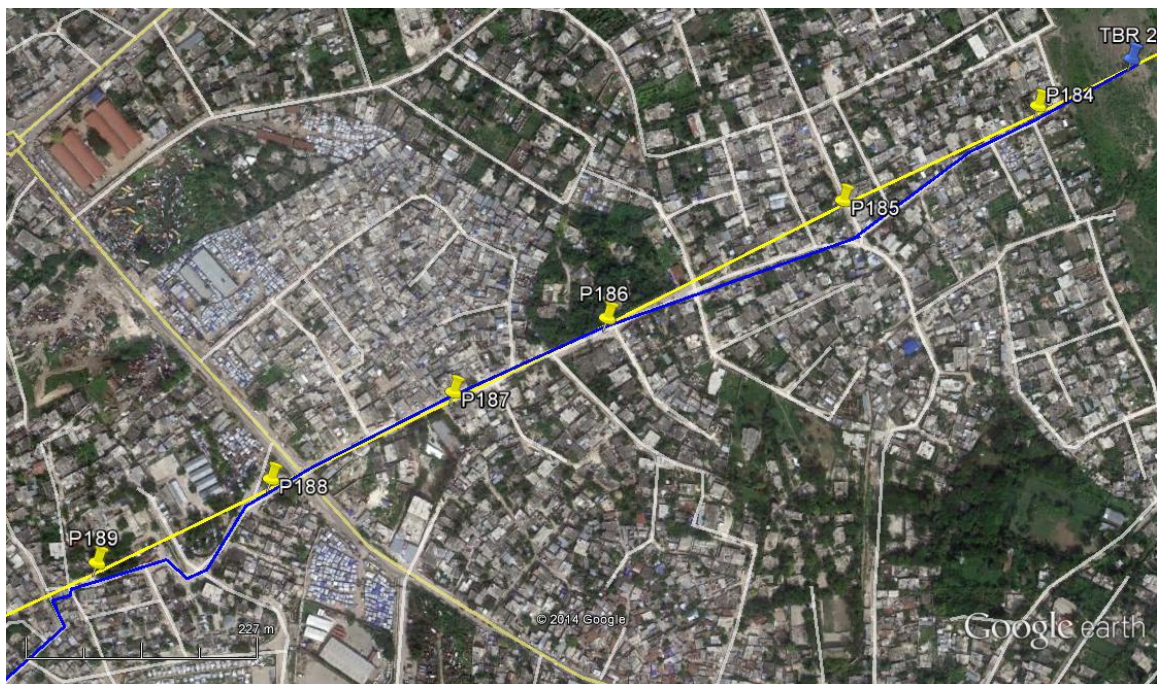
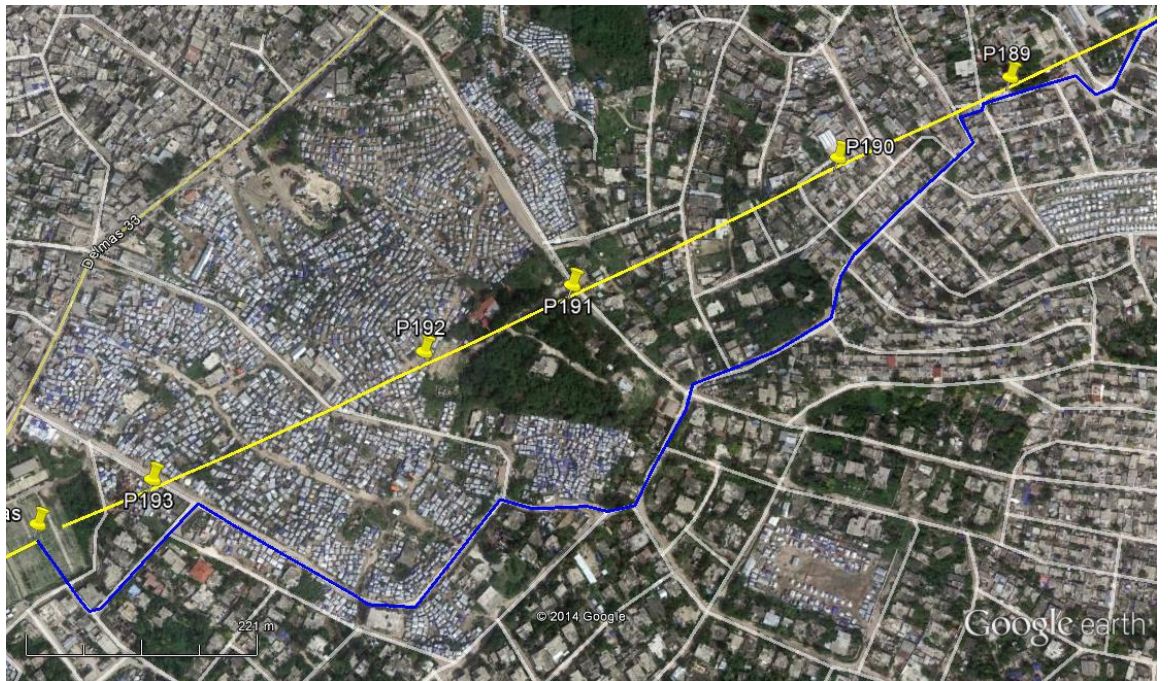


3. RE-ROUTING OVERHEAD LINE

3.1. OHL Bypass at Mirebalais (4,9 km)

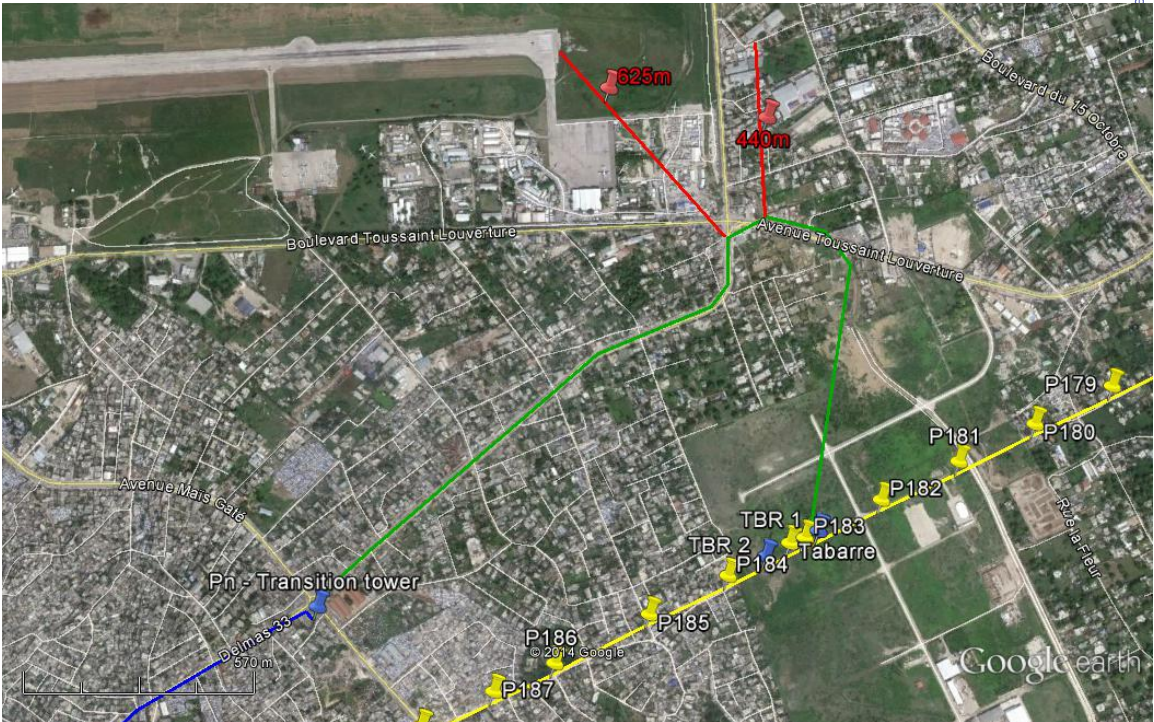
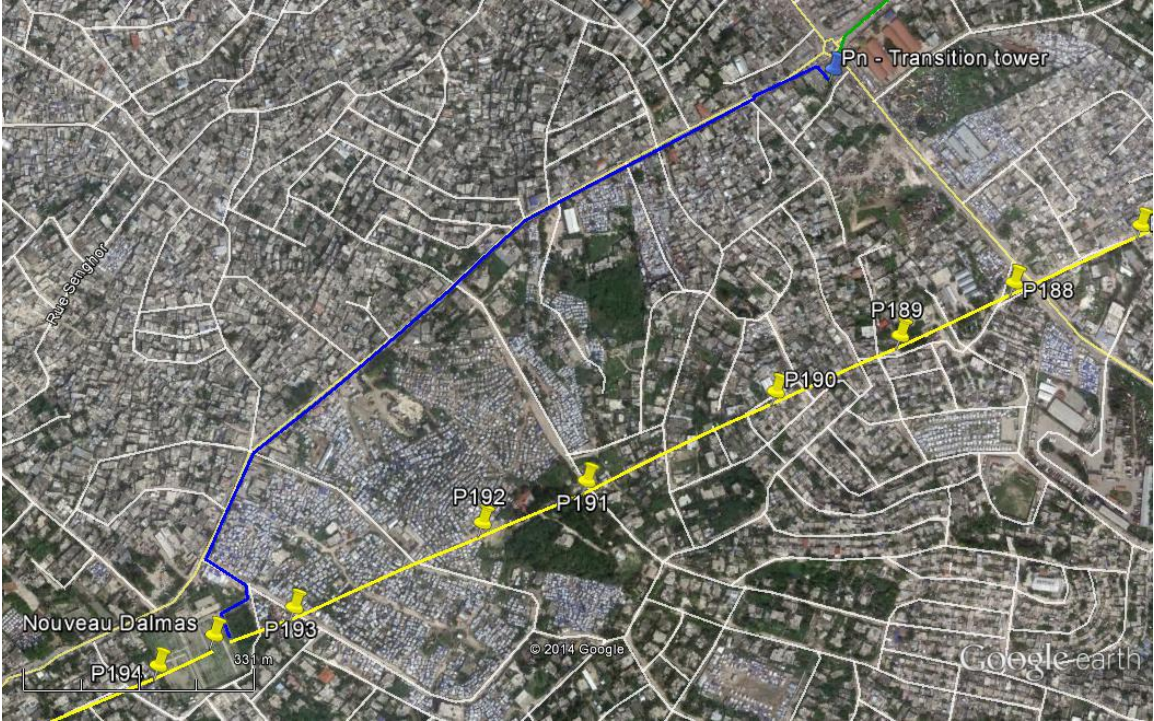


3.2. UGC Nouveau Delmas – Tabarre (2,53 km)



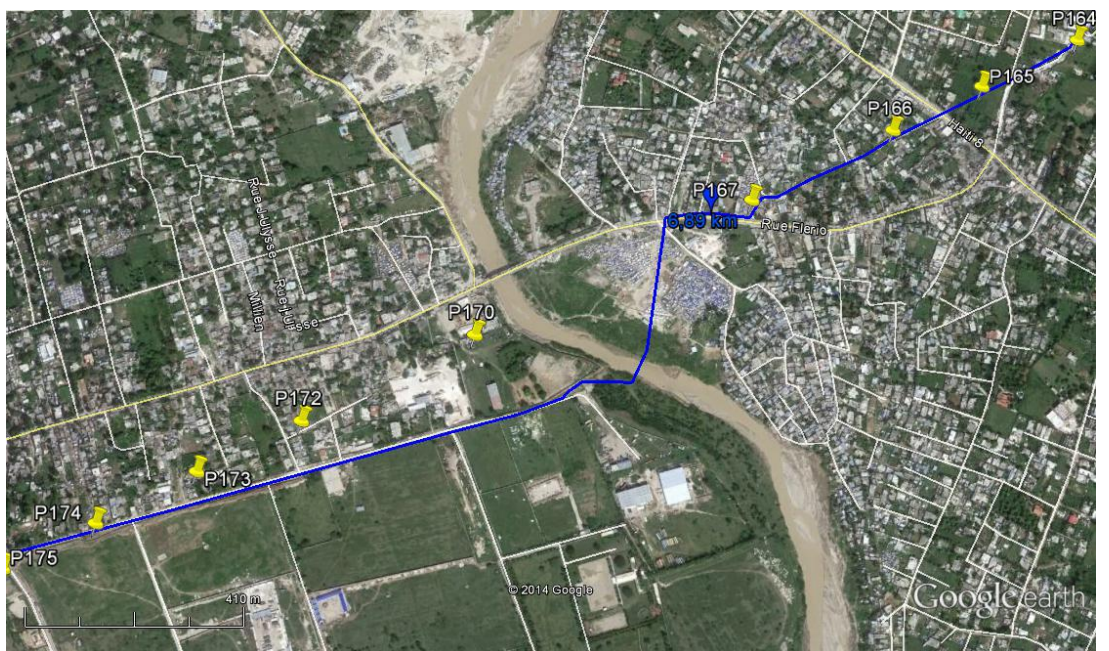
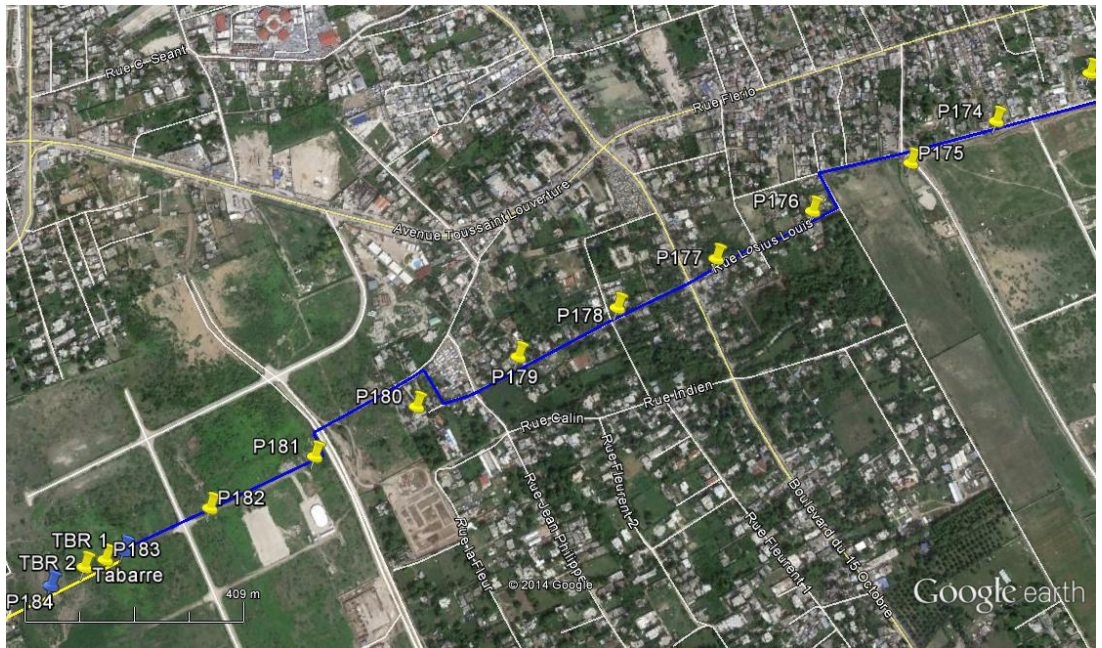
This document is the property of Tractebel Engineering.

3.3. UGC Nouveau Delmas – Pn (1,32 km) and OHL Pn – Tabarre (2,54 km)

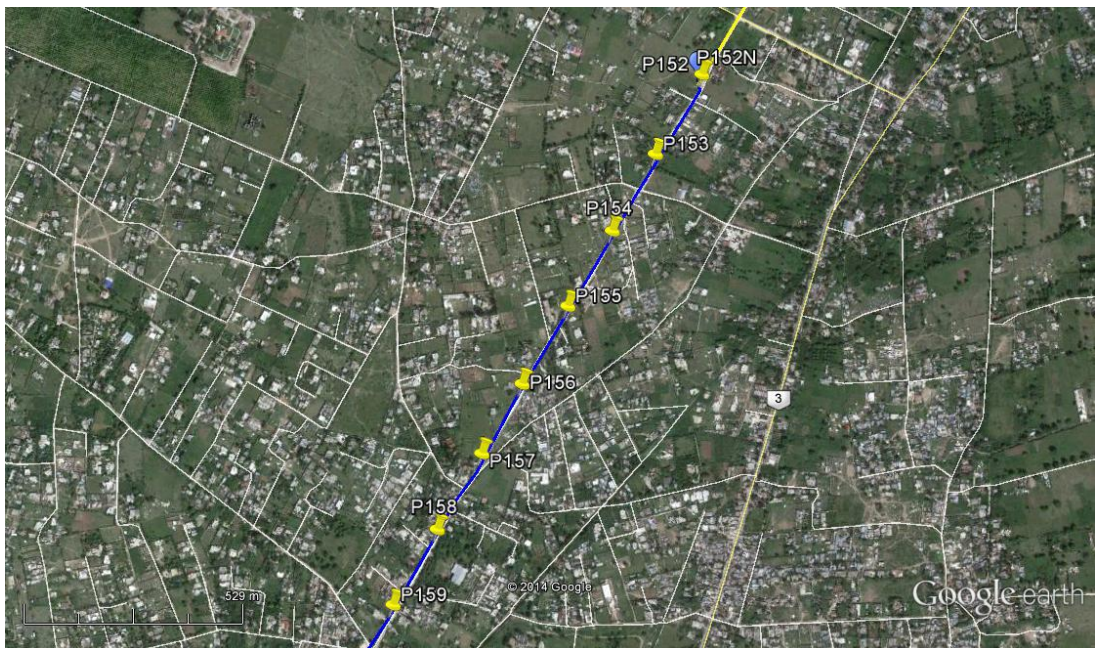
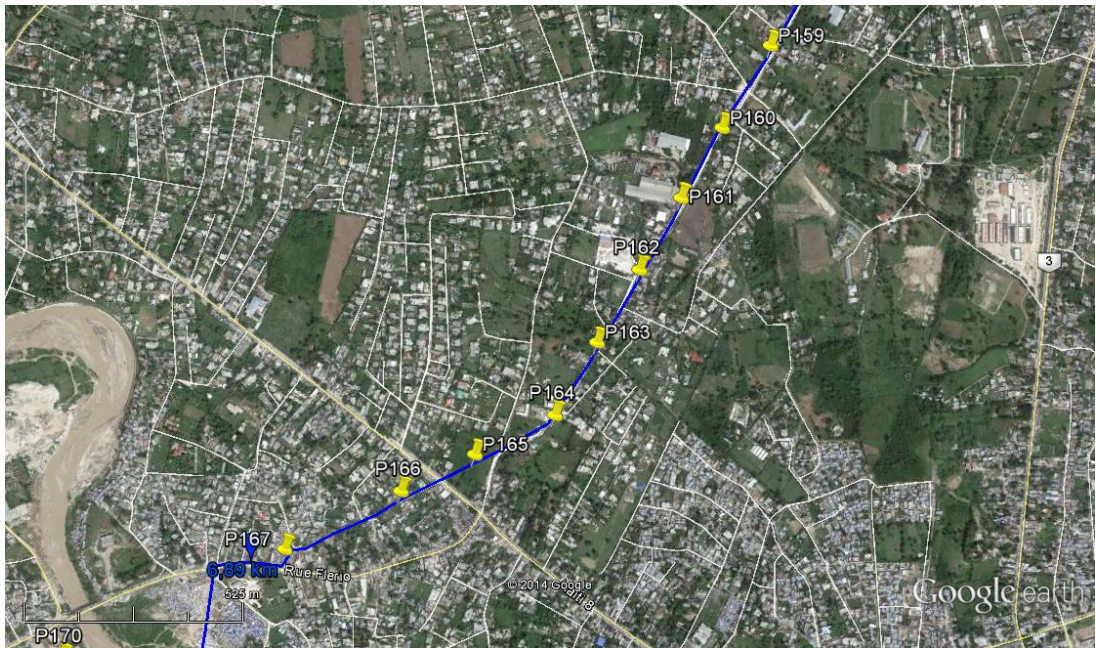


This document is the property of Tra

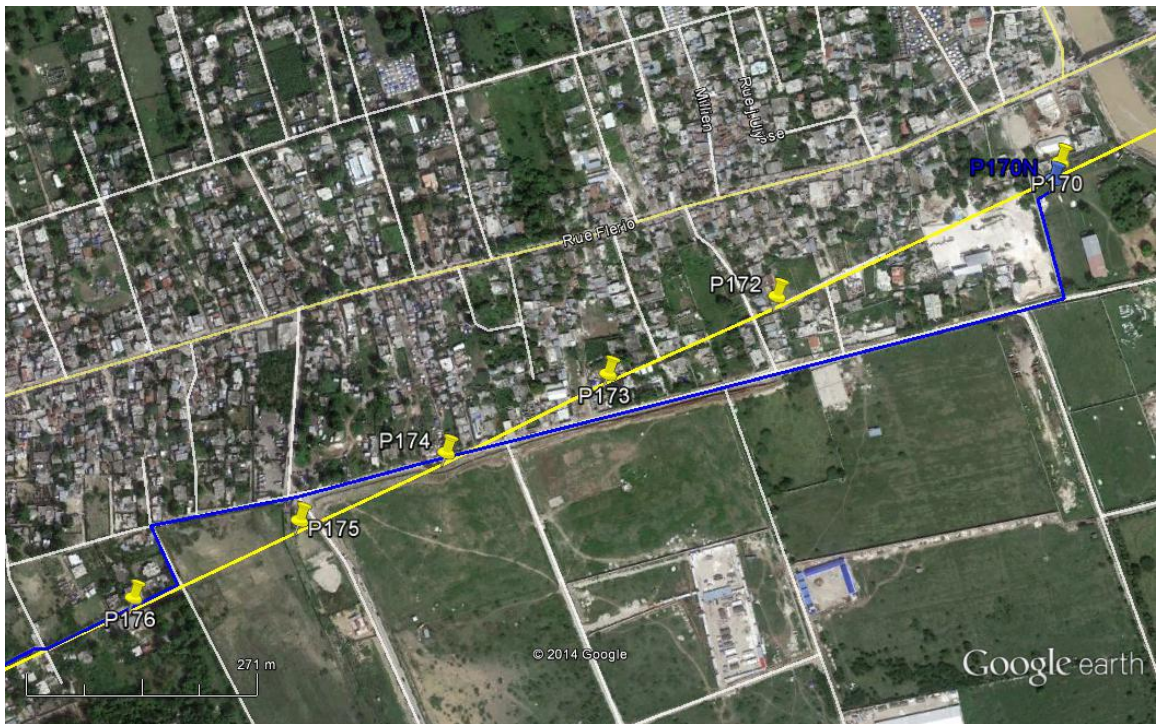
3.4. UGC Tabarre – P152N (6,89 km)



This document is the property of Tractebel Engineering S.A. Any duplication or transmission to third parties is forbidden without prior written approval

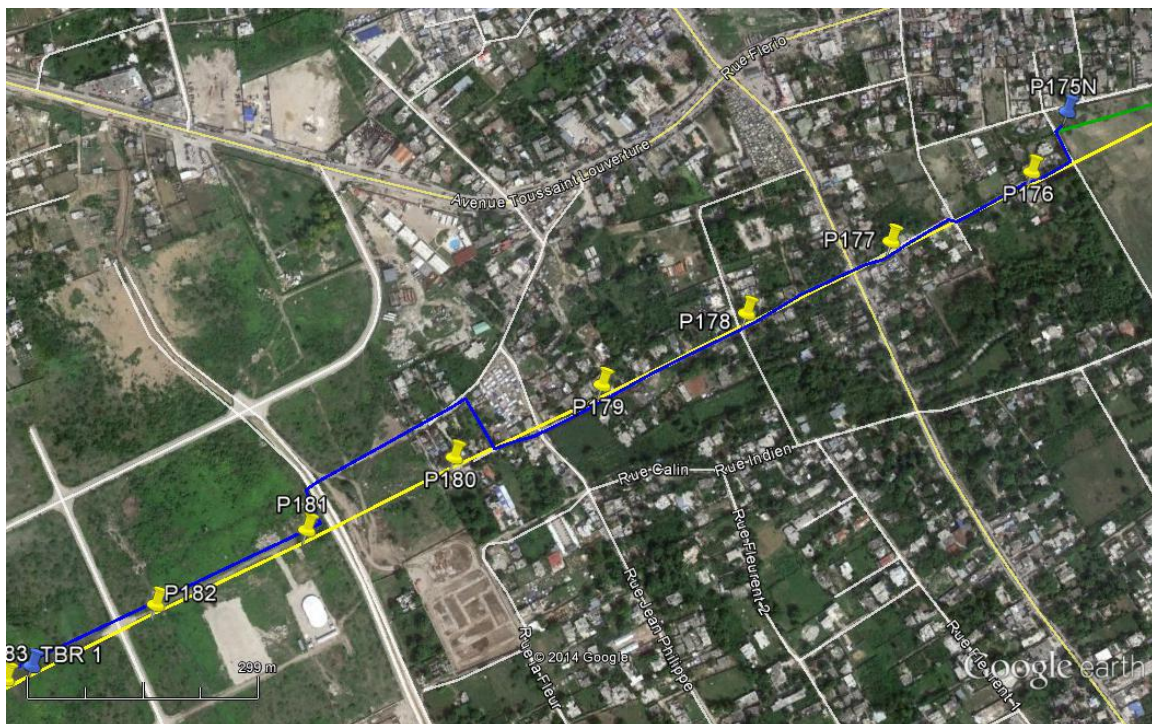


3.5. UGC Tabarre – P170N (2,97 km)



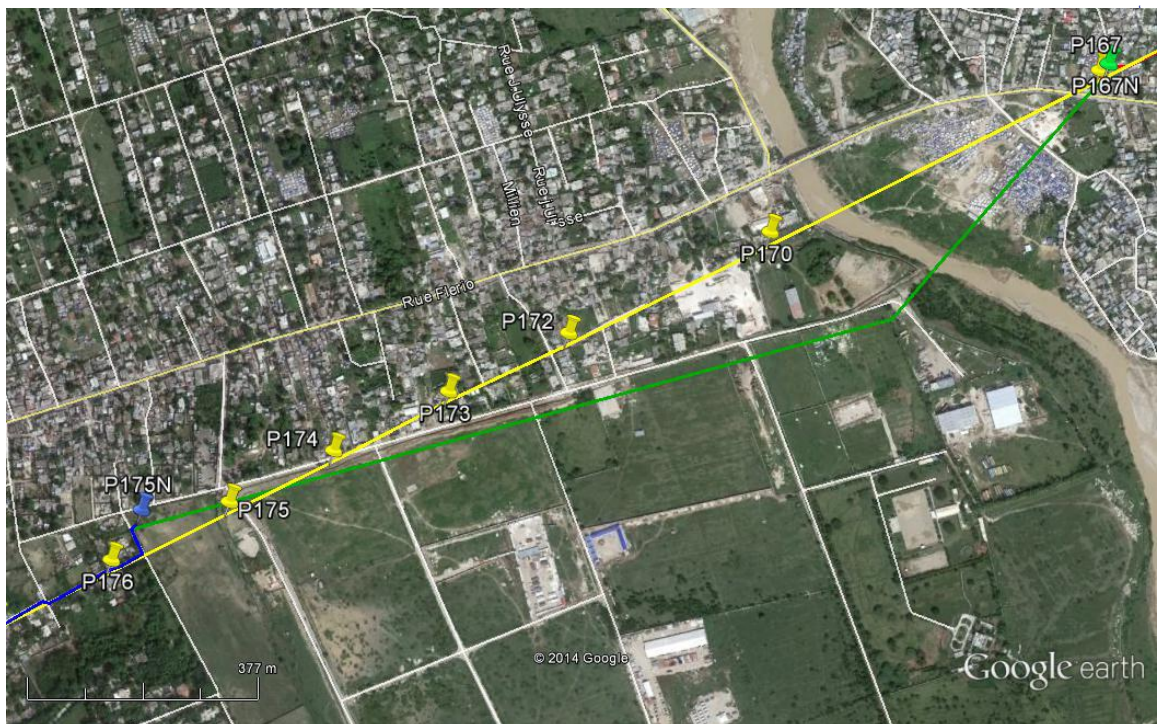
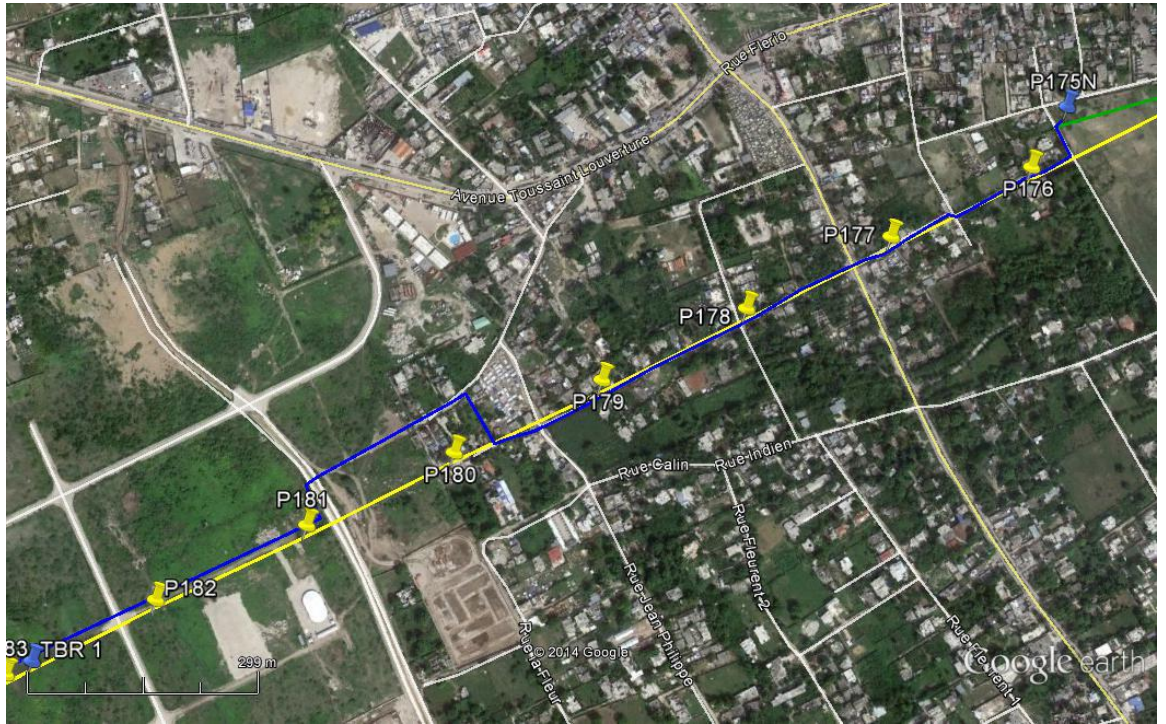
This document is the property of Tractebel Engineering

3.6. UGC Tabarre – P175N (1,7 km) and OHL P175N – P167N (1,8 km)

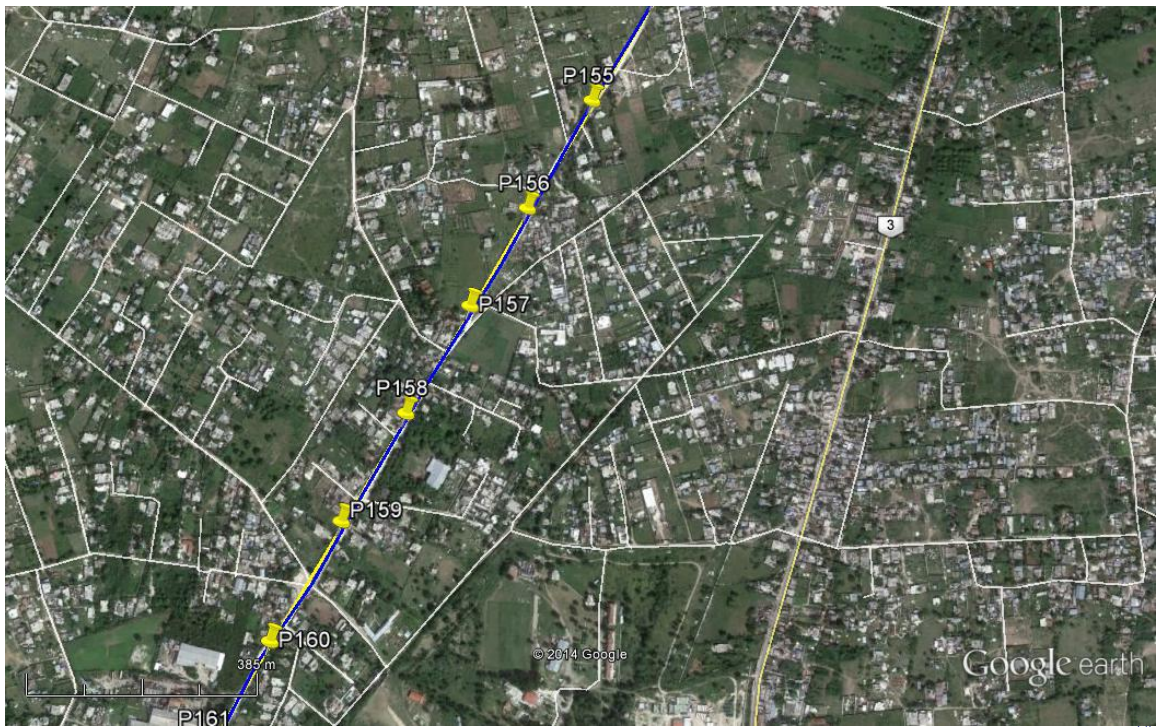
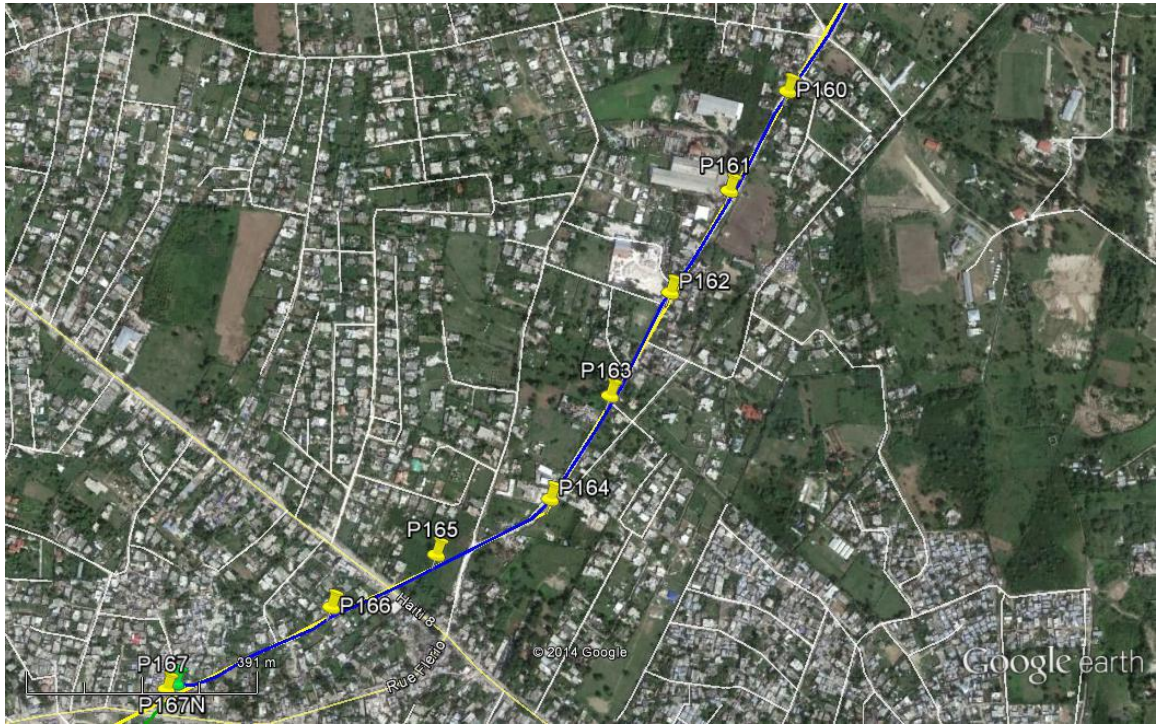


This document is the property of [unreadable] or written by [unreadable]

3.7. UGC Tabarre – P175N (1,7 km) and OHL P175N – P167N (1,8 km) and UGC P167N – P152N (3,35 km)



This document is the property



This document is the property of Tractebel Engineering

